

Data Path : Z:\voasrv\HPCHEM1\MSVOA_N\Data\VN102121\
 Data File : VN069085.D
 Acq On : 21 Oct 2021 13:56
 Operator : JC/MD
 Sample : M4253-04 200X
 Misc : 5.00mL/MSVOA_N/WATER
 ALS Vial : 9 Sample Multiplier: 1

Instrument :
 MSVOA_N
 ClientSampled :
 129

Quant Time: Oct 22 01:32:50 2021
 Quant Method : Z:\voasrv\HPCHEM1\MSVOA_N\methods\82N101221W.M
 Quant Title : SW846 8260
 QLast Update : Wed Oct 13 05:44:40 2021
 Response via : Initial Calibration

Compound	R.T.	QIon	Response	Conc	Units	Dev(Min)

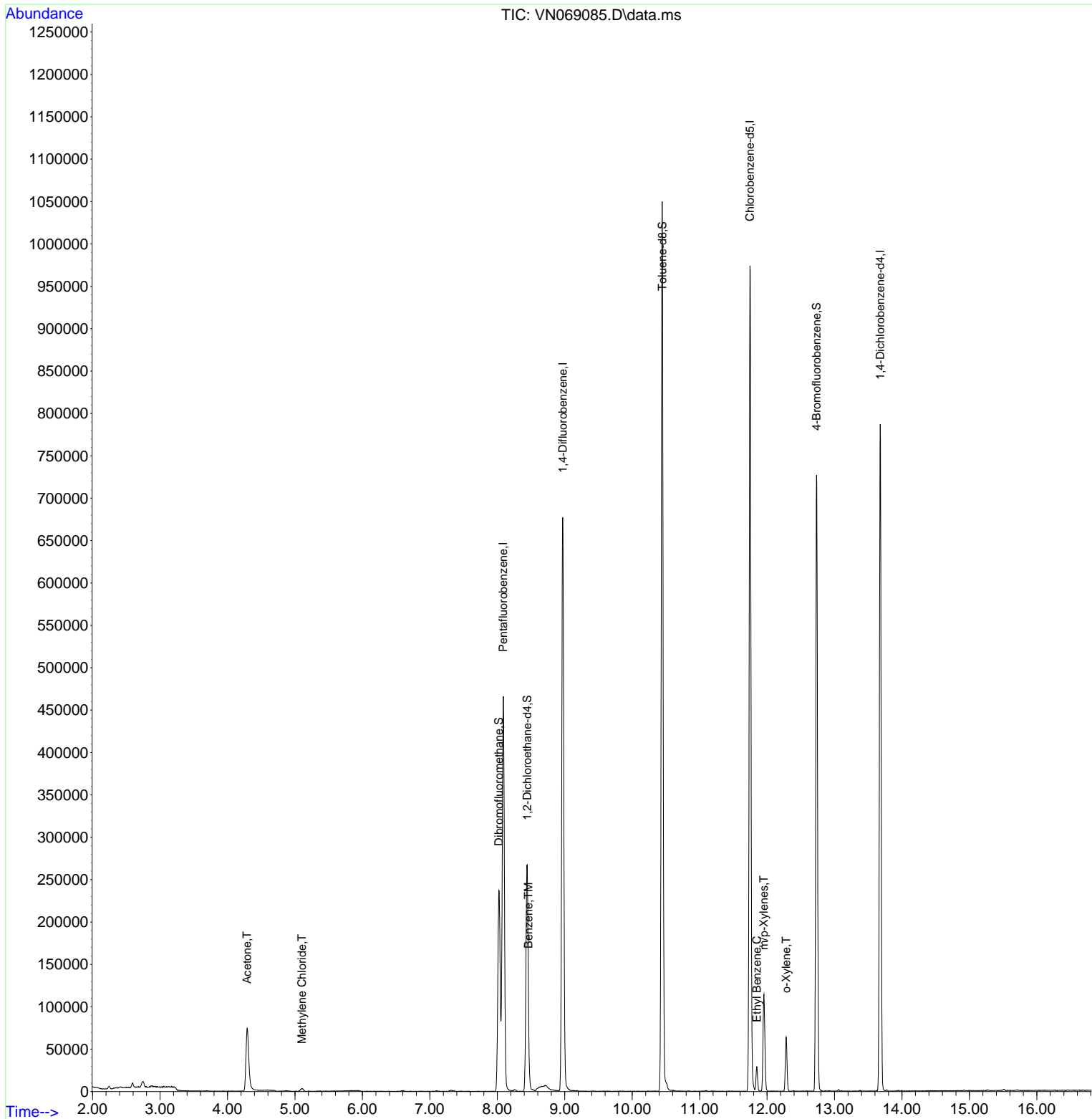
Internal Standards						
1) Pentafluorobenzene	8.088	168	347161	50.000	ug/l	0.00
34) 1,4-Difluorobenzene	8.971	114	612986	50.000	ug/l	0.00
63) Chlorobenzene-d5	11.747	117	576726	50.000	ug/l	0.00
72) 1,4-Dichlorobenzene-d4	13.678	152	210564	50.000	ug/l	0.00
System Monitoring Compounds						
33) 1,2-Dichloroethane-d4	8.442	65	229960	50.240	ug/l	0.00
Spiked Amount	50.000	Range 61 - 141	Recovery	=	100.480%	
35) Dibromofluoromethane	8.024	113	179362	50.292	ug/l	0.00
Spiked Amount	50.000	Range 69 - 133	Recovery	=	100.580%	
50) Toluene-d8	10.446	98	758355	53.144	ug/l	0.00
Spiked Amount	50.000	Range 65 - 126	Recovery	=	106.280%	
62) 4-Bromofluorobenzene	12.734	95	268183	49.813	ug/l	0.00
Spiked Amount	50.000	Range 58 - 135	Recovery	=	99.620%	
Target Compounds						
						Qvalue
16) Acetone	4.291	43	143569	84.051	ug/l	98
20) Methylene Chloride	5.103	84	2945	0.749	ug/l	84
40) Benzene	8.461	78	5292	0.332	ug/l	97
67) Ethyl Benzene	11.849	91	22244	1.097	ug/l	97
68) m/p-Xylenes	11.953	106	37385	4.865	ug/l	100
69) o-Xylene	12.283	106	18307	2.380	ug/l	99

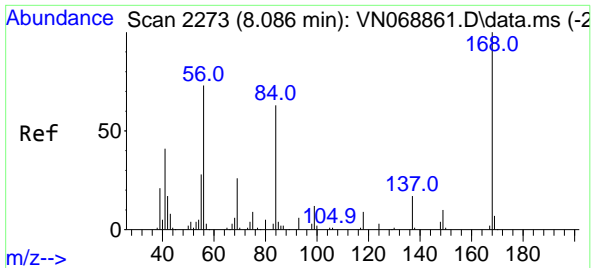
(#) = qualifier out of range (m) = manual integration (+) = signals summed

Data Path : Z:\voasrv\HPCHEM1\MSVOA_N\Data\VN102121\
 Data File : VN069085.D
 Acq On : 21 Oct 2021 13:56
 Operator : JC/MD
 Sample : M4253-04 200X
 Misc : 5.00mL/MSVOA_N/WATER
 ALS Vial : 9 Sample Multiplier: 1

Instrument :
 MSVOA_N
 ClientSampled :
 129

Quant Time: Oct 22 01:32:50 2021
 Quant Method : Z:\voasrv\HPCHEM1\MSVOA_N\methods\82N101221W.M
 Quant Title : SW846 8260
 QLast Update : Wed Oct 13 05:44:40 2021
 Response via : Initial Calibration

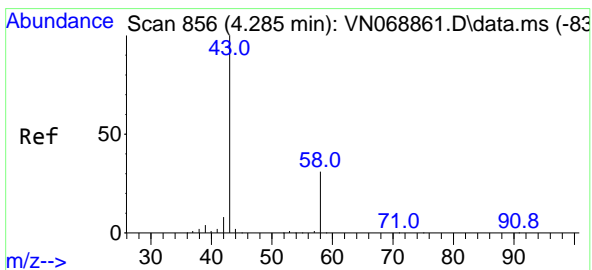
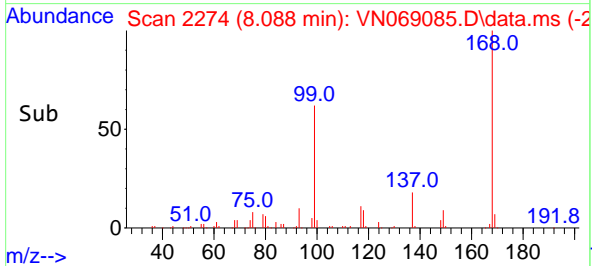
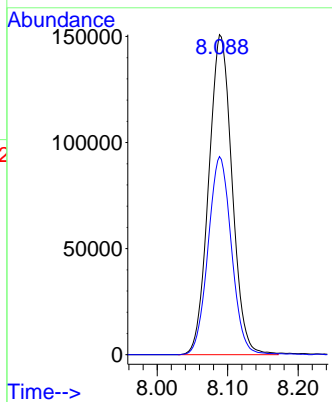
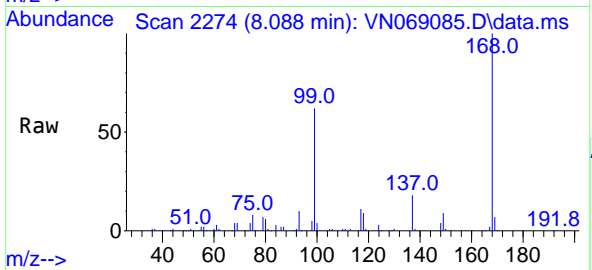




#1
 Pentafluorobenzene
 Concen: 50.000 ug/l
 RT: 8.088 min Scan# 2274
 Delta R.T. 0.002 min
 Lab File: VN069085.D
 Acq: 21 Oct 2021 13:56

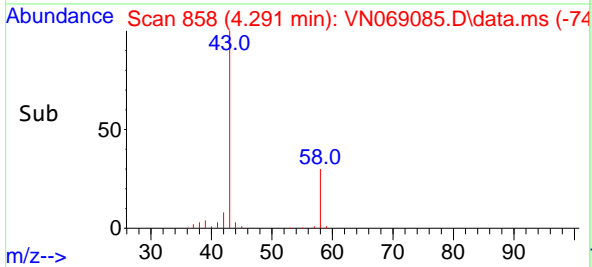
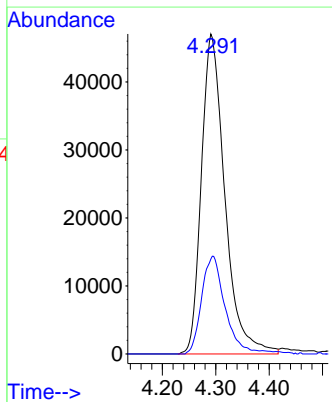
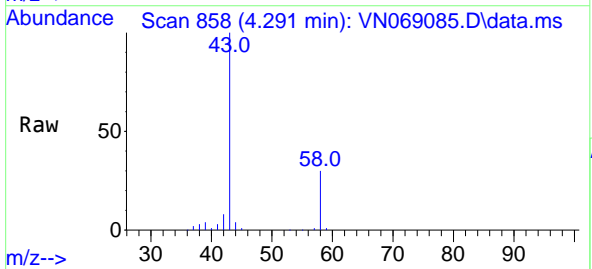
Instrument :
 MSVOA_N
 ClientSampled :
 129

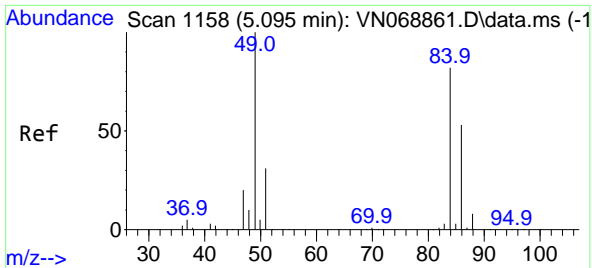
Tgt Ion:168 Resp: 347161
 Ion Ratio Lower Upper
 168 100
 99 61.9 48.9 73.3



#16
 Acetone
 Concen: 84.051 ug/l
 RT: 4.291 min Scan# 858
 Delta R.T. 0.006 min
 Lab File: VN069085.D
 Acq: 21 Oct 2021 13:56

Tgt Ion: 43 Resp: 143569
 Ion Ratio Lower Upper
 43 100
 58 29.7 24.5 36.7



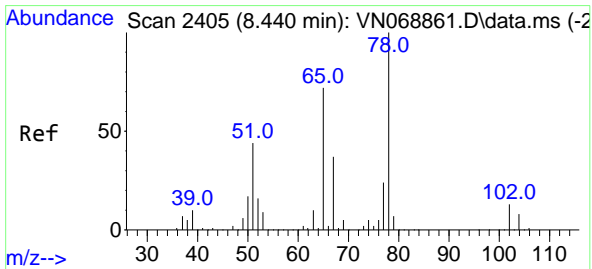
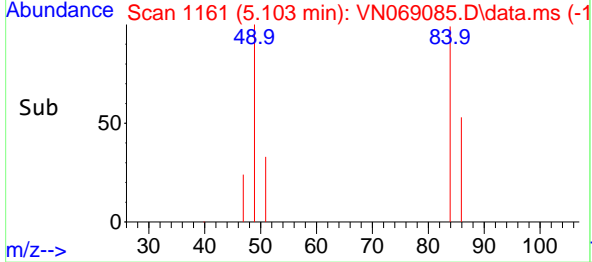
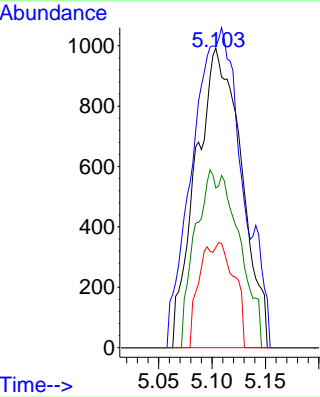
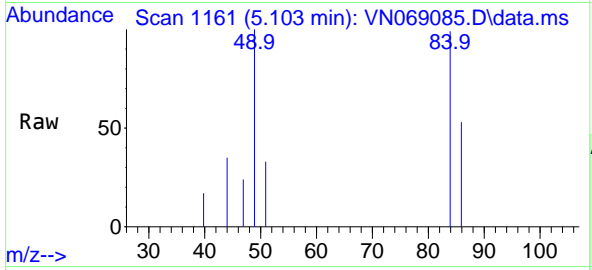


#20
Methylene Chloride
Concen: 0.749 ug/l
RT: 5.103 min Scan# 1161
Delta R.T. 0.008 min
Lab File: VN069085.D
Acq: 21 Oct 2021 13:56

Instrument :
MSVOA_N
ClientSampled :
129

Tgt Ion: 84 Resp: 2945

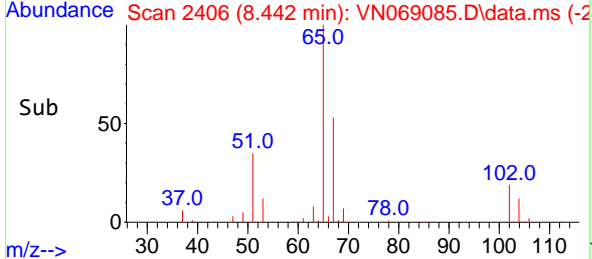
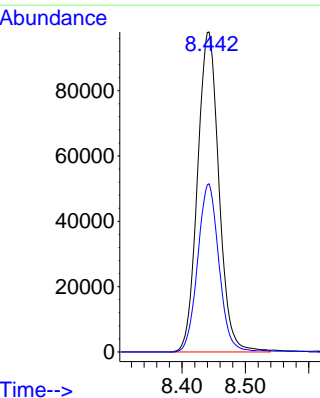
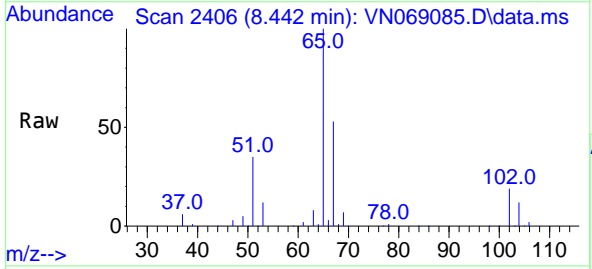
Ion	Ratio	Lower	Upper
84	100		
49	100.5	97.6	146.4
51	33.5	30.3	45.5
86	53.3	51.8	77.6

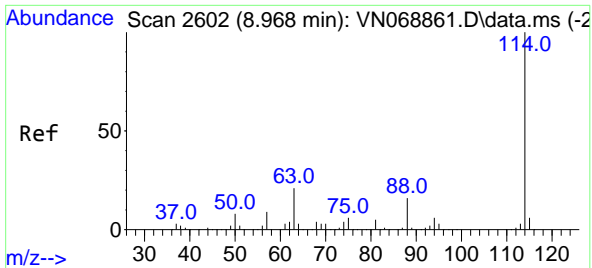


#33
1,2-Dichloroethane-d4
Concen: 50.240 ug/l
RT: 8.442 min Scan# 2406
Delta R.T. 0.003 min
Lab File: VN069085.D
Acq: 21 Oct 2021 13:56

Tgt Ion: 65 Resp: 229960

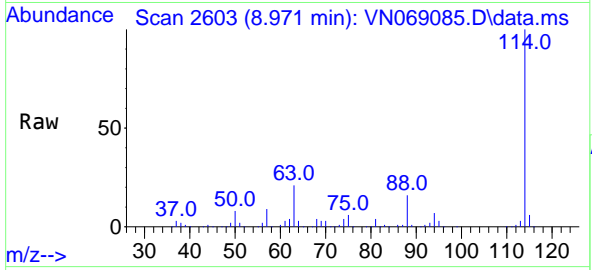
Ion	Ratio	Lower	Upper
65	100		
67	52.0	0.0	103.8





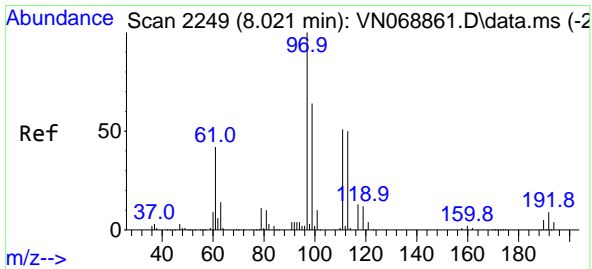
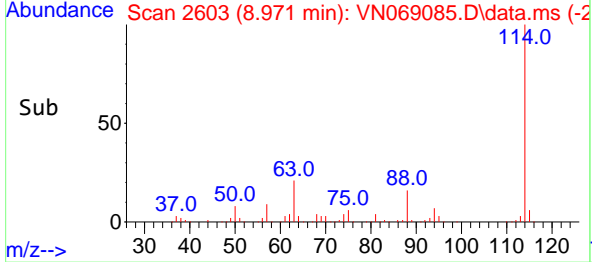
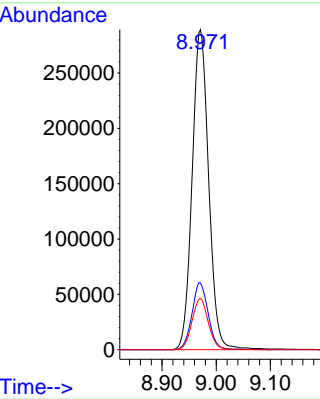
#34
 1,4-Difluorobenzene
 Concen: 50.000 ug/l
 RT: 8.971 min Scan# 2603
 Delta R.T. 0.003 min
 Lab File: VN069085.D
 Acq: 21 Oct 2021 13:56

Instrument :
 MSVOA_N
 ClientSampled :
 129

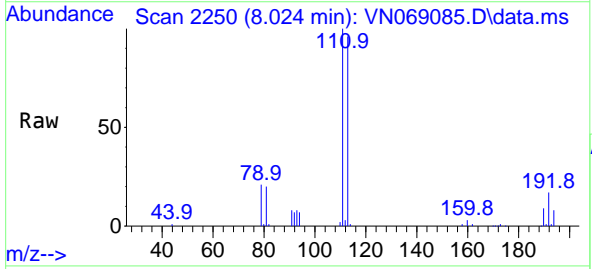


Tgt Ion:114 Resp: 612986

Ion	Ratio	Lower	Upper
114	100		
63	20.8	0.0	42.6
88	16.0	0.0	32.0

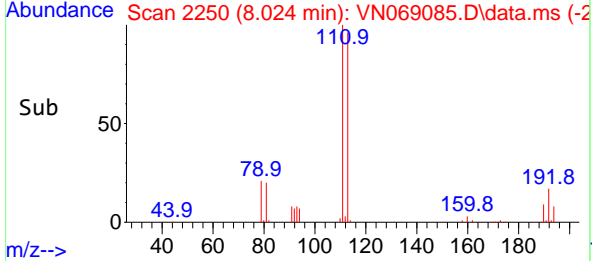
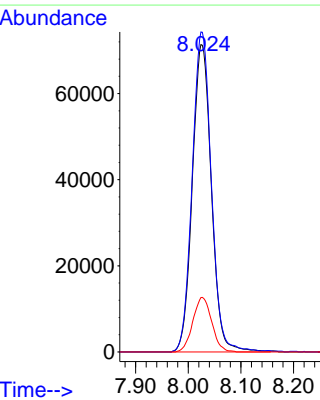


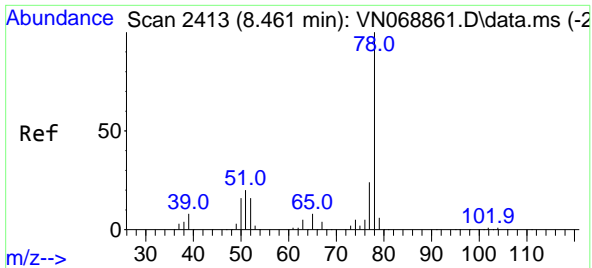
#35
 Dibromofluoromethane
 Concen: 50.292 ug/l
 RT: 8.024 min Scan# 2250
 Delta R.T. 0.003 min
 Lab File: VN069085.D
 Acq: 21 Oct 2021 13:56



Tgt Ion:113 Resp: 179362

Ion	Ratio	Lower	Upper
113	100		
111	104.5	83.2	124.8
192	17.6	15.0	22.4

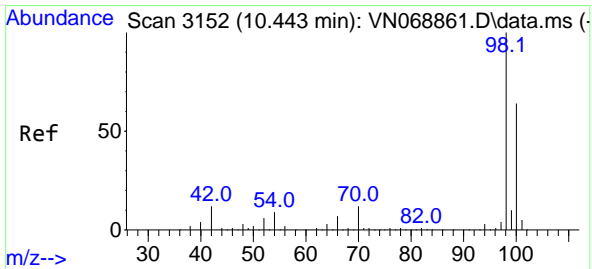
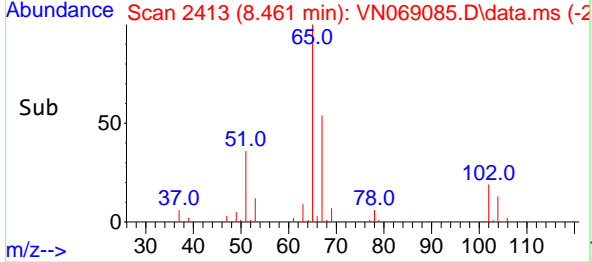
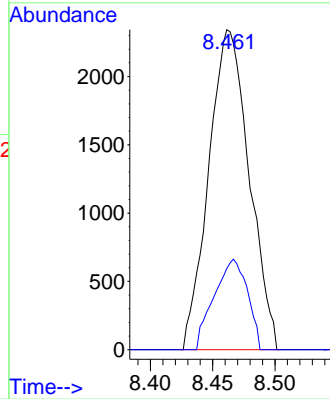
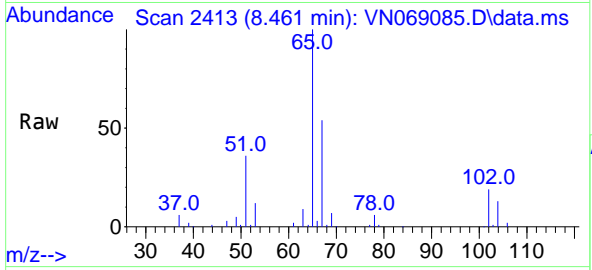




#40
Benzene
Concen: 0.332 ug/l
RT: 8.461 min Scan# 2413
Delta R.T. 0.000 min
Lab File: VN069085.D
Acq: 21 Oct 2021 13:56

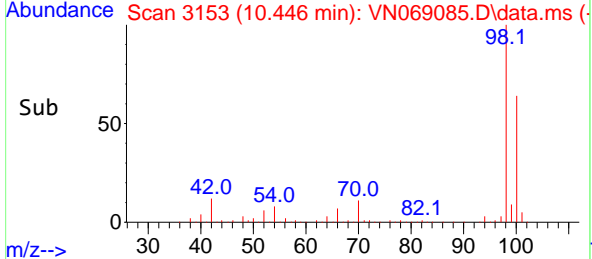
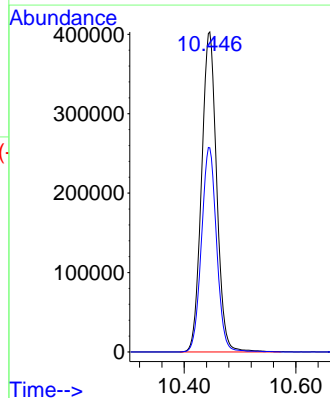
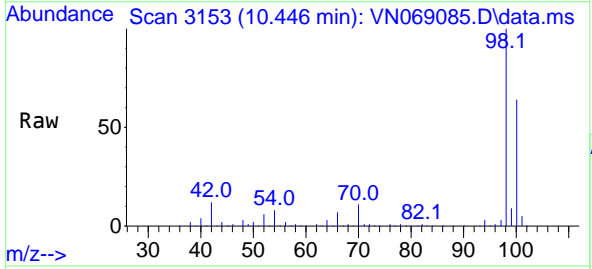
Instrument :
MSVOA_N
ClientSampled :
129

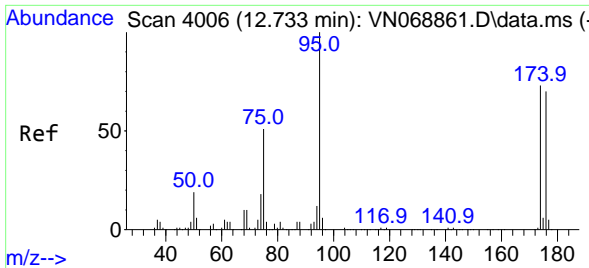
Tgt Ion: 78 Resp: 5292
Ion Ratio Lower Upper
78 100
77 25.4 19.1 28.7



#50
Toluene-d8
Concen: 53.144 ug/l
RT: 10.446 min Scan# 3153
Delta R.T. 0.003 min
Lab File: VN069085.D
Acq: 21 Oct 2021 13:56

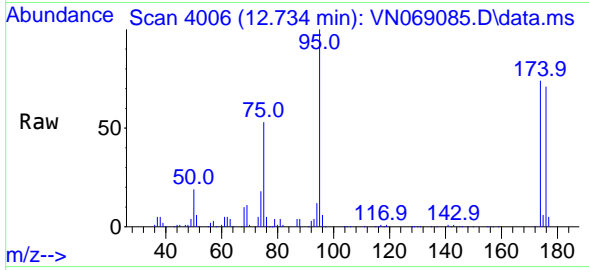
Tgt Ion: 98 Resp: 758355
Ion Ratio Lower Upper
98 100
100 63.8 51.5 77.3



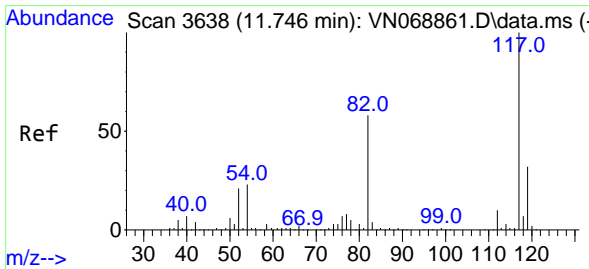
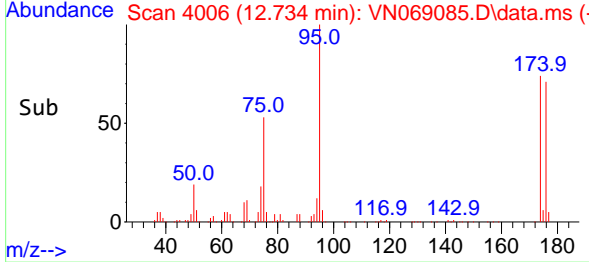
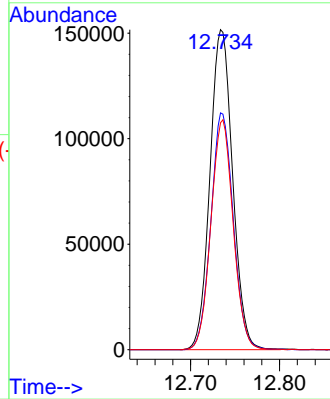


#62
 4-Bromofluorobenzene
 Concen: 49.813 ug/l
 RT: 12.734 min Scan# 4006
 Delta R.T. 0.000 min
 Lab File: VN069085.D
 Acq: 21 Oct 2021 13:56

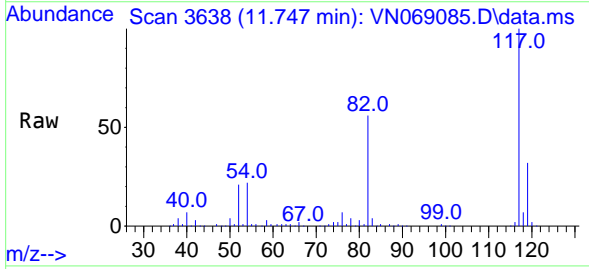
Instrument :
 MSVOA_N
 ClientSampled :
 129



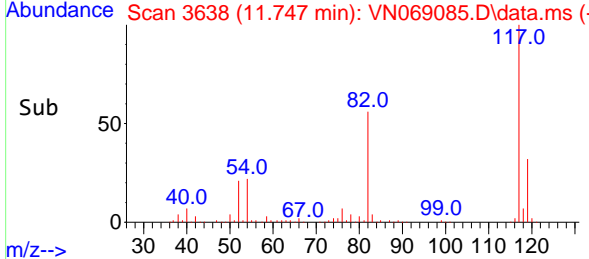
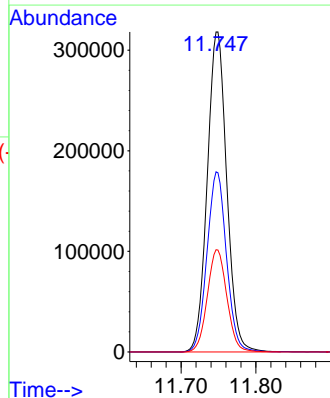
Tgt Ion: 95 Resp: 268183
 Ion Ratio Lower Upper
 95 100
 174 73.2 0.0 144.8
 176 70.6 0.0 140.0

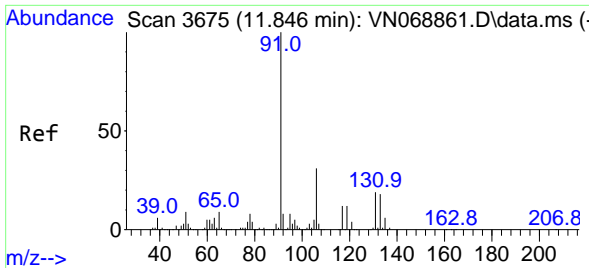


#63
 Chlorobenzene-d5
 Concen: 50.000 ug/l
 RT: 11.747 min Scan# 3638
 Delta R.T. 0.000 min
 Lab File: VN069085.D
 Acq: 21 Oct 2021 13:56



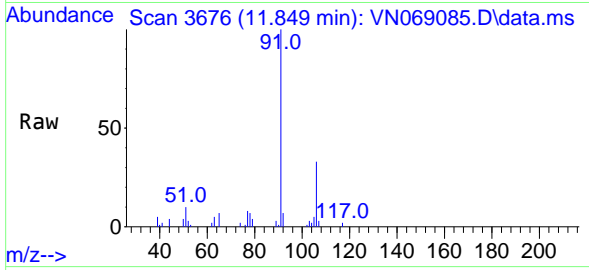
Tgt Ion: 117 Resp: 576726
 Ion Ratio Lower Upper
 117 100
 82 56.3 46.4 69.6
 119 31.9 26.0 39.0



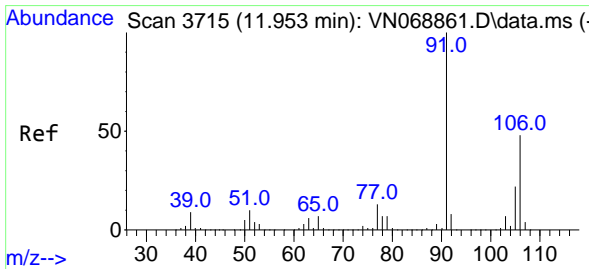
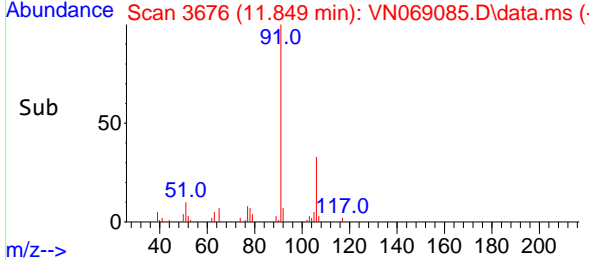
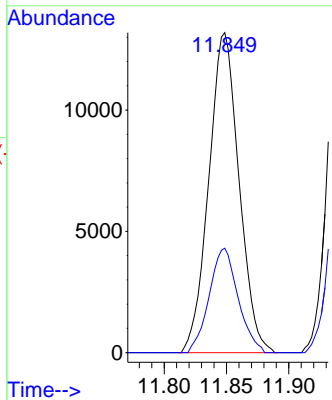


#67
 Ethyl Benzene
 Concen: 1.097 ug/l
 RT: 11.849 min Scan# 3676
 Delta R.T. 0.003 min
 Lab File: VN069085.D
 Acq: 21 Oct 2021 13:56

Instrument :
 MSVOA_N
 ClientSampled :
 129

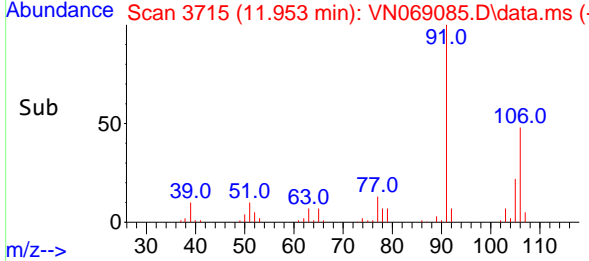
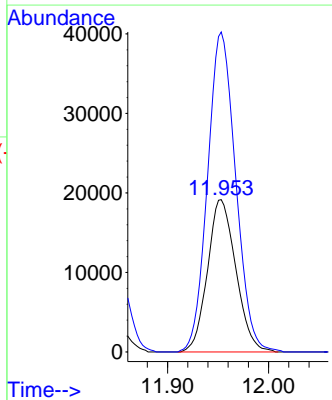
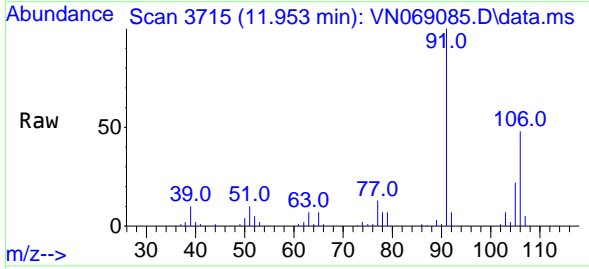


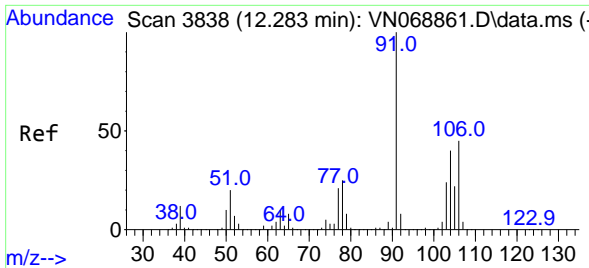
Tgt Ion: 91 Resp: 22244
 Ion Ratio Lower Upper
 91 100
 106 32.6 24.8 37.2



#68
 m/p-Xylenes
 Concen: 4.865 ug/l
 RT: 11.953 min Scan# 3715
 Delta R.T. 0.000 min
 Lab File: VN069085.D
 Acq: 21 Oct 2021 13:56

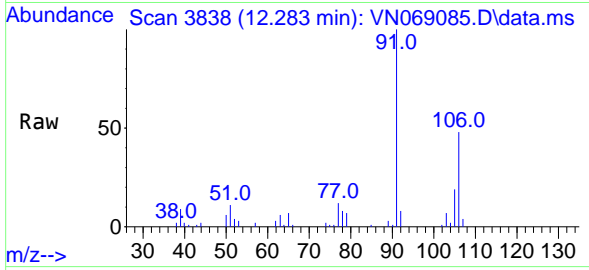
Tgt Ion: 106 Resp: 37385
 Ion Ratio Lower Upper
 106 100
 91 208.1 166.8 250.2



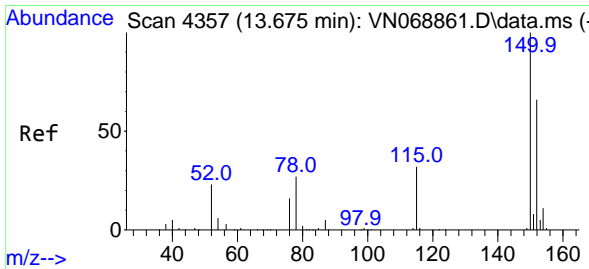
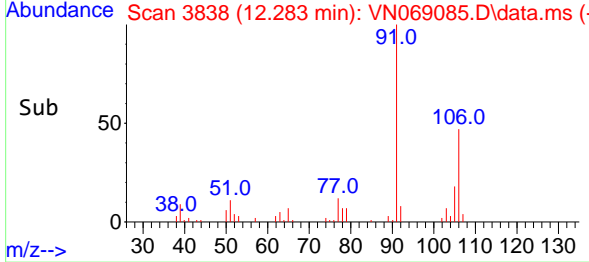
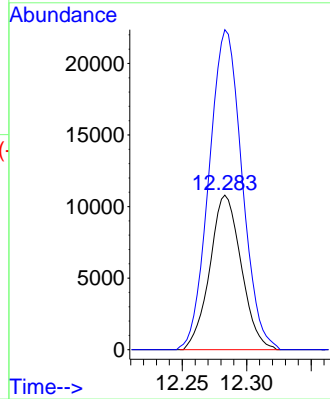


#69
 o-Xylene
 Concen: 2.380 ug/l
 RT: 12.283 min Scan# 3838
 Delta R.T. 0.000 min
 Lab File: VN069085.D
 Acq: 21 Oct 2021 13:56

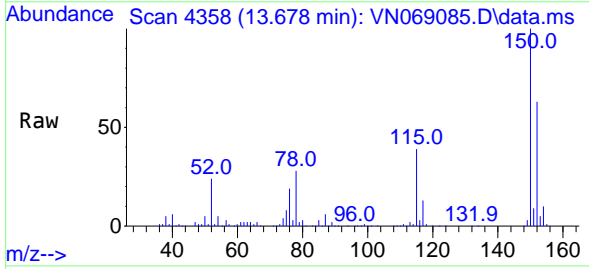
Instrument :
 MSVOA_N
 ClientSampled :
 129



Tgt Ion:106 Resp: 18307
 Ion Ratio Lower Upper
 106 100
 91 217.2 109.6 328.6



#72
 1,4-Dichlorobenzene-d4
 Concen: 50.000 ug/l
 RT: 13.678 min Scan# 4358
 Delta R.T. 0.003 min
 Lab File: VN069085.D
 Acq: 21 Oct 2021 13:56



Tgt Ion:152 Resp: 210564
 Ion Ratio Lower Upper
 152 100
 115 62.4 31.4 94.3
 150 157.3 0.0 351.0

