

Data Path : Z:\voasrv\HPCHEM1\MSVOA_N\Data\VN102121\
 Data File : VN069089.D
 Acq On : 21 Oct 2021 15:37
 Operator : JC/MD
 Sample : M4284-12 200X
 Misc : 5.00mL/MSVOA_N/WATER
 ALS Vial : 13 Sample Multiplier: 1

Instrument :
 MSVOA_N
 ClientSampled :
 30855

Manual Integrations
 APPROVED

MMDadoda
 10/22/2021 7:09:14 PM

Quant Time: Oct 22 01:33:33 2021
 Quant Method : Z:\voasrv\HPCHEM1\MSVOA_N\methods\82N101221W.M
 Quant Title : SW846 8260
 QLast Update : Wed Oct 13 05:44:40 2021
 Response via : Initial Calibration

Compound	R.T.	QIon	Response	Conc	Units	Dev(Min)
Internal Standards						
1) Pentafluorobenzene	8.088	168	329570	50.000	ug/l	0.00
34) 1,4-Difluorobenzene	8.971	114	584254	50.000	ug/l	0.00
63) Chlorobenzene-d5	11.749	117	550829	50.000	ug/l	0.00
72) 1,4-Dichlorobenzene-d4	13.678	152	211471	50.000	ug/l	0.00
System Monitoring Compounds						
33) 1,2-Dichloroethane-d4	8.440	65	220246	50.686	ug/l	0.00
Spiked Amount	50.000	Range 61 - 141	Recovery	=	101.380%	
35) Dibromofluoromethane	8.027	113	172303	50.689	ug/l	0.00
Spiked Amount	50.000	Range 69 - 133	Recovery	=	101.380%	
50) Toluene-d8	10.443	98	727911	53.519	ug/l	0.00
Spiked Amount	50.000	Range 65 - 126	Recovery	=	107.040%	
62) 4-Bromofluorobenzene	12.733	95	260974	50.858	ug/l	0.00
Spiked Amount	50.000	Range 58 - 135	Recovery	=	101.720%	
Target Compounds						
16) Acetone	4.312	43	6014m	3.709	ug/l	
20) Methylene Chloride	5.103	84	4961	1.329	ug/l	85
30) Chloroform	7.817	83	28241	4.155	ug/l	97
86) p-Isopropyltoluene	13.618	119	31386	2.214	ug/l	92

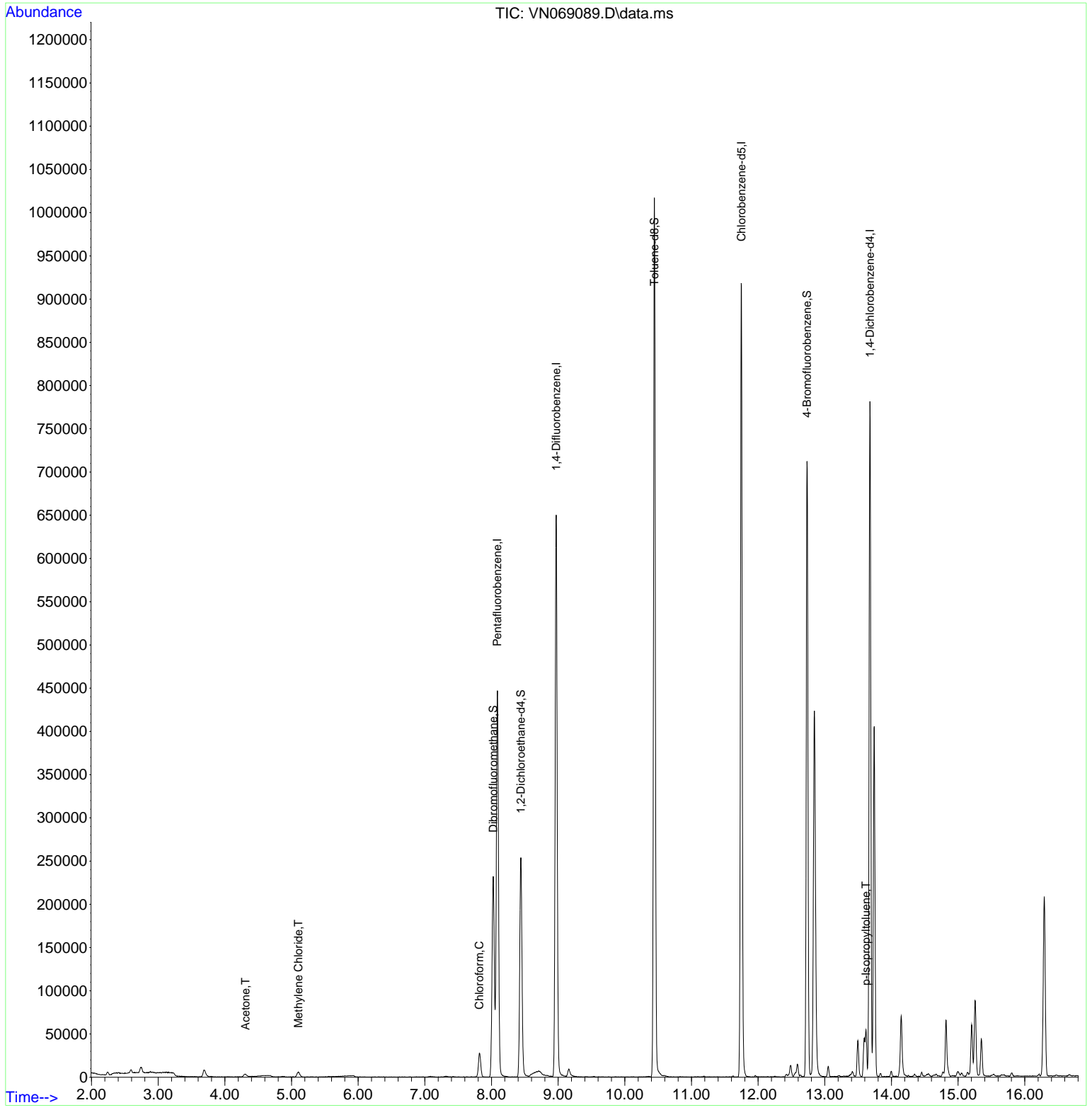
(#) = qualifier out of range (m) = manual integration (+) = signals summed

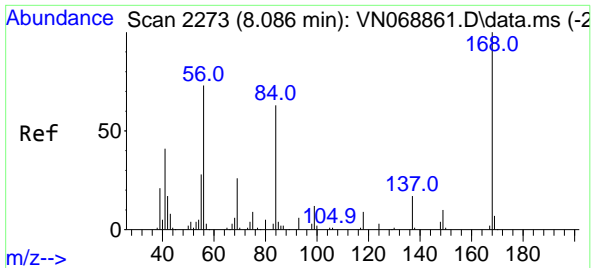
Data Path : Z:\voasrv\HPCHEM1\MSVOA_N\Data\VN102121\
 Data File : VN069089.D
 Acq On : 21 Oct 2021 15:37
 Operator : JC/MD
 Sample : M4284-12 200X
 Misc : 5.00mL/MSVOA_N/WATER
 ALS Vial : 13 Sample Multiplier: 1

Instrument :
 MSVOA_N
ClientSampled :
 30855

Manual Integrations
APPROVED
 MMDadoda
 10/22/2021 7:09:14 PM

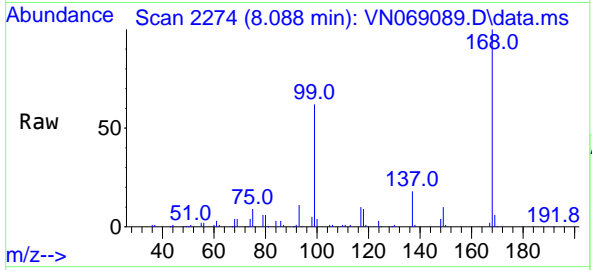
Quant Time: Oct 22 01:33:33 2021
 Quant Method : Z:\voasrv\HPCHEM1\MSVOA_N\methods\82N101221W.M
 Quant Title : SW846 8260
 QLast Update : Wed Oct 13 05:44:40 2021
 Response via : Initial Calibration





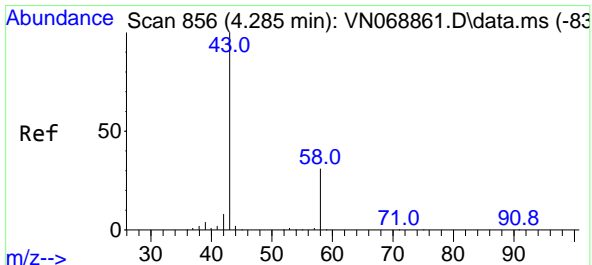
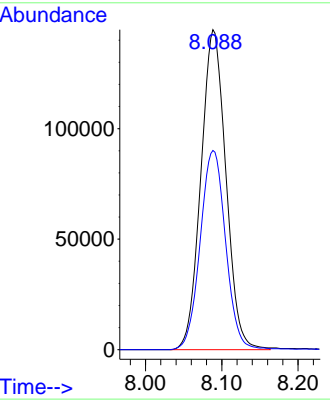
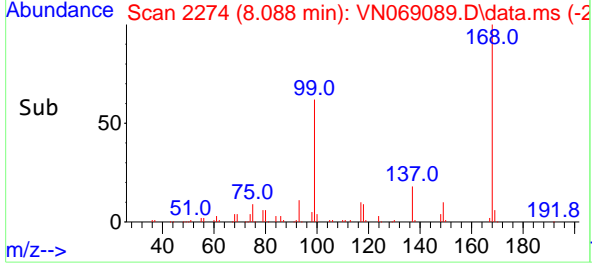
#1
 Pentafluorobenzene
 Concen: 50.000 ug/l
 RT: 8.088 min Scan# 2274
 Delta R.T. 0.002 min
 Lab File: VN069089.D
 Acq: 21 Oct 2021 15:37

Instrument :
 MSVOA_N
ClientSampled :
 30855

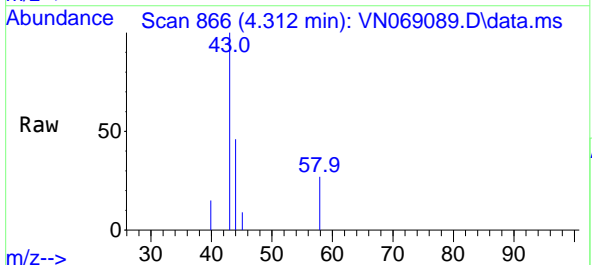


Tgt Ion: 168 Resp: 329570
 Ion Ratio Lower Upper
 168 100
 99 62.3 48.9 73.3

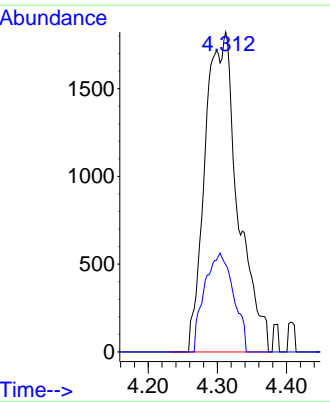
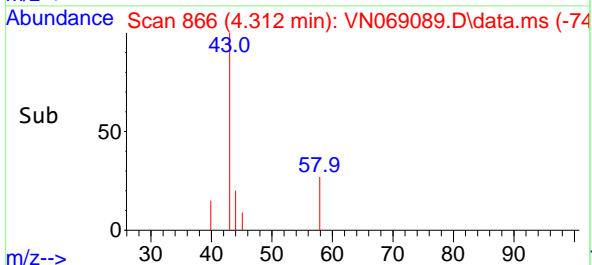
Manual Integrations
APPROVED
 MMDadoda
 10/22/2021 7:09:14 PM

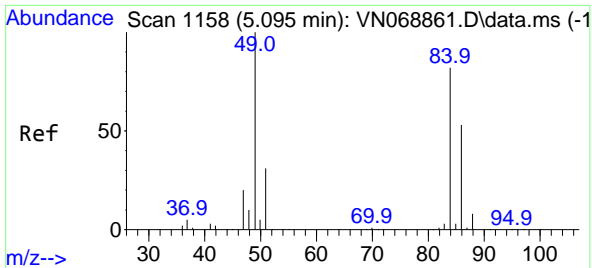


#16
 Acetone
 Concen: 3.709 ug/l m
 RT: 4.312 min Scan# 866
 Delta R.T. 0.027 min
 Lab File: VN069089.D
 Acq: 21 Oct 2021 15:37



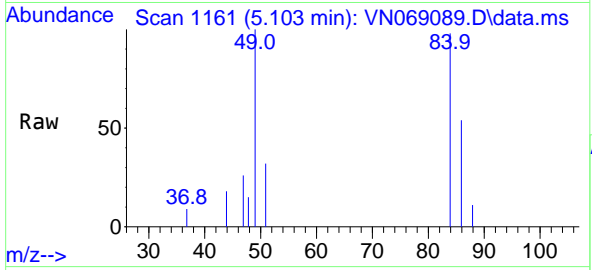
Tgt Ion: 43 Resp: 6014
 Ion Ratio Lower Upper
 43 100
 58 27.3 24.5 36.7





#20
 Methylene Chloride
 Concen: 1.329 ug/l
 RT: 5.103 min Scan# 1161
 Delta R.T. 0.008 min
 Lab File: VN069089.D
 Acq: 21 Oct 2021 15:37

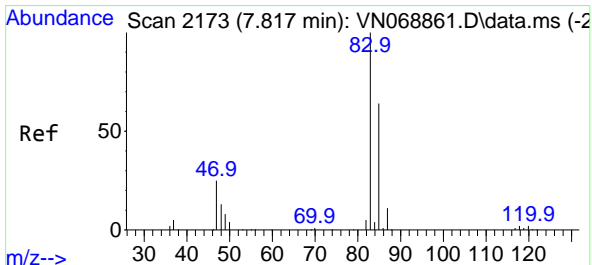
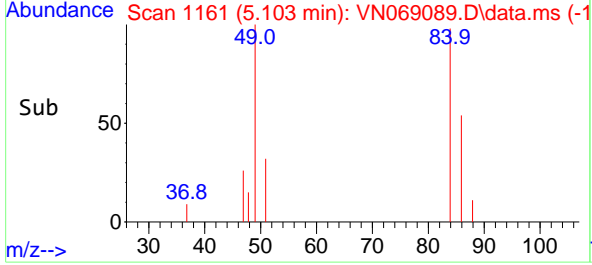
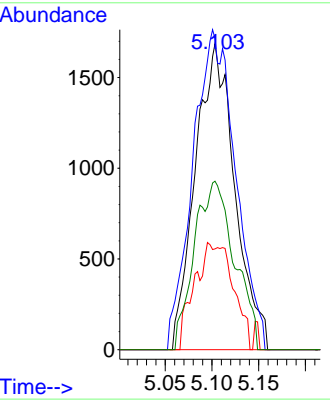
Instrument :
 MSVOA_N
 ClientSampled :
 30855



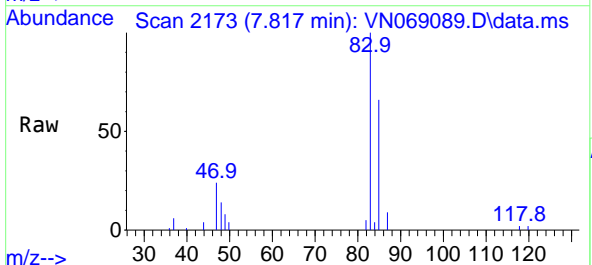
Tgt Ion: 84 Resp: 4961

Ion	Ratio	Lower	Upper
84	100		
49	101.7	97.6	146.4
51	33.0	30.3	45.5
86	55.1	51.8	77.6

Manual Integrations
APPROVED
 MMDadoda
 10/22/2021 7:09:14 PM

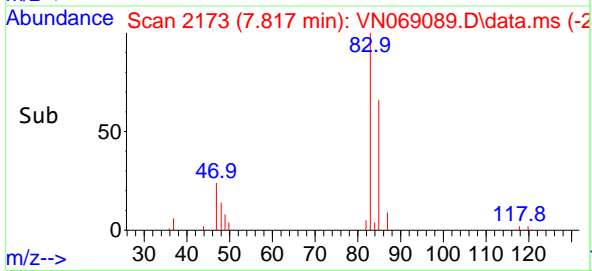
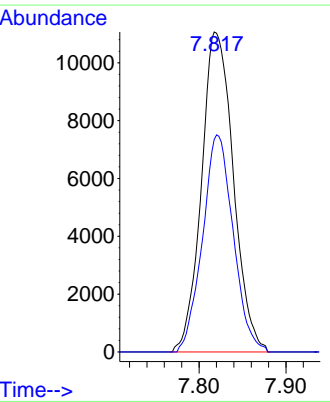


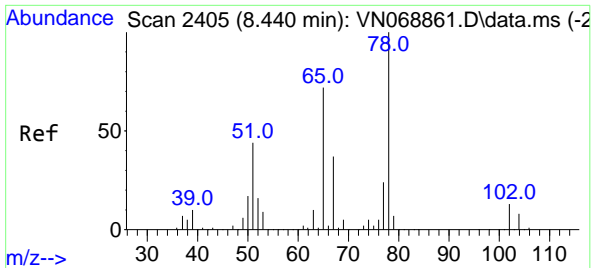
#30
 Chloroform
 Concen: 4.155 ug/l
 RT: 7.817 min Scan# 2173
 Delta R.T. 0.000 min
 Lab File: VN069089.D
 Acq: 21 Oct 2021 15:37



Tgt Ion: 83 Resp: 28241

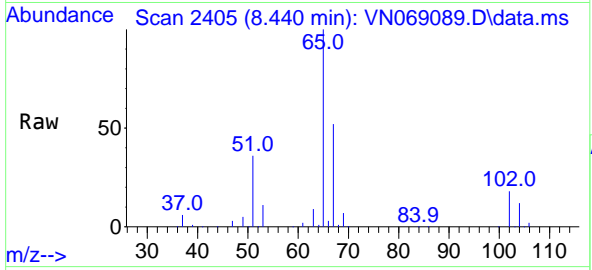
Ion	Ratio	Lower	Upper
83	100		
85	66.4	51.1	76.7





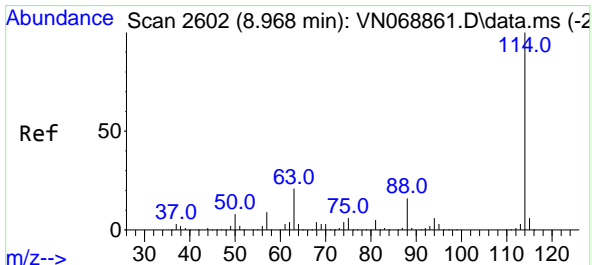
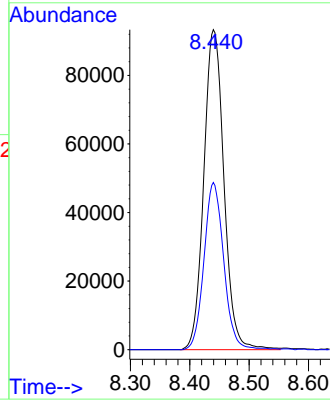
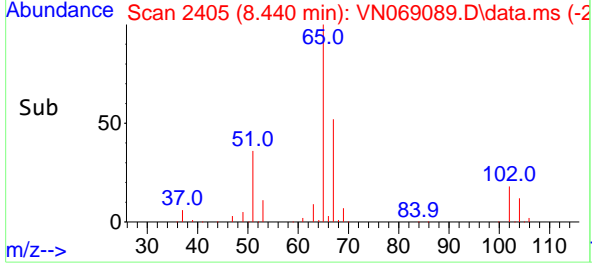
#33
 1,2-Dichloroethane-d4
 Concen: 50.686 ug/l
 RT: 8.440 min Scan# 2405
 Delta R.T. 0.000 min
 Lab File: VN069089.D
 Acq: 21 Oct 2021 15:37

Instrument : MSVOA_N
 ClientSampled : 30855

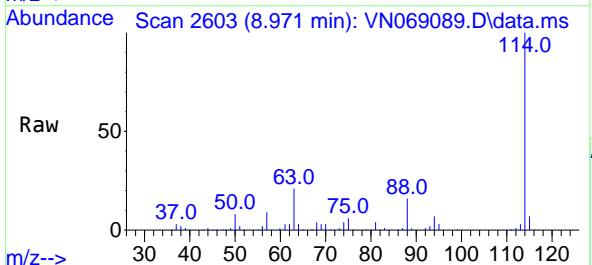


Tgt Ion: 65 Resp: 220246
 Ion Ratio Lower Upper
 65 100
 67 51.0 0.0 103.8

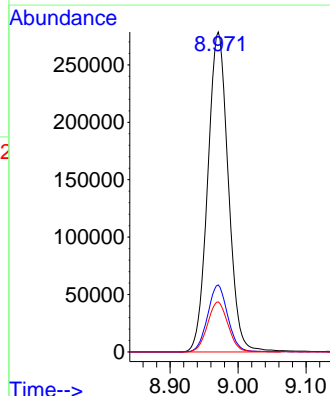
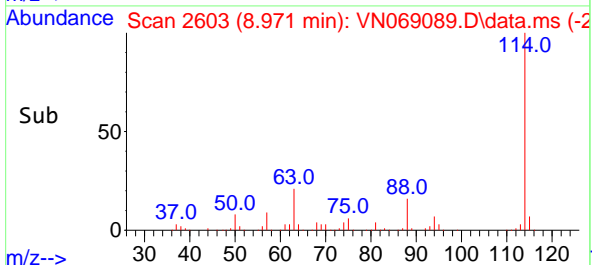
Manual Integrations
APPROVED
 MMDadoda
 10/22/2021 7:09:14 PM

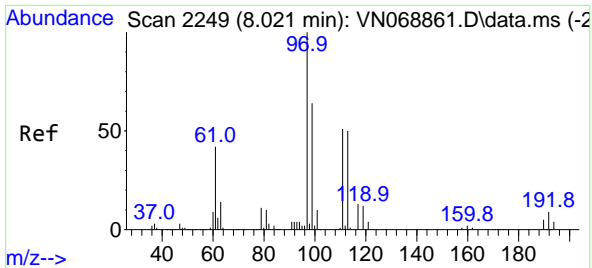


#34
 1,4-Difluorobenzene
 Concen: 50.000 ug/l
 RT: 8.971 min Scan# 2603
 Delta R.T. 0.003 min
 Lab File: VN069089.D
 Acq: 21 Oct 2021 15:37



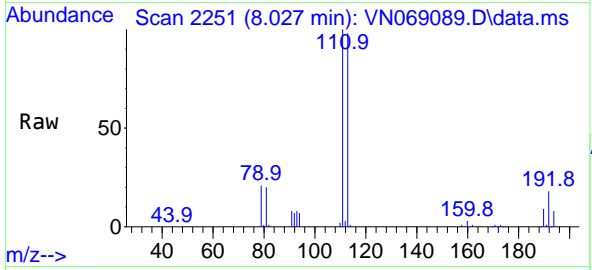
Tgt Ion: 114 Resp: 584254
 Ion Ratio Lower Upper
 114 100
 63 21.0 0.0 42.6
 88 15.7 0.0 32.0





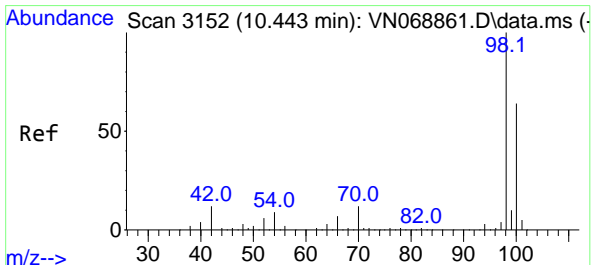
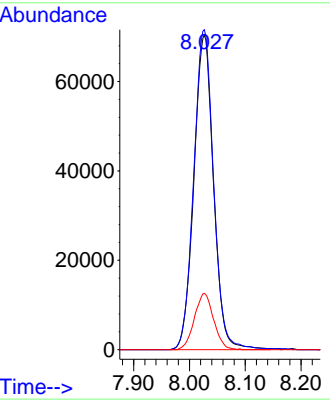
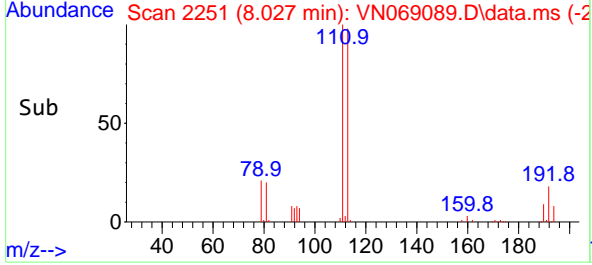
#35
 Dibromofluoromethane
 Concen: 50.689 ug/l
 RT: 8.027 min Scan# 2251
 Delta R.T. 0.005 min
 Lab File: VN069089.D
 Acq: 21 Oct 2021 15:37

Instrument :
 MSVOA_N
ClientSampled :
 30855

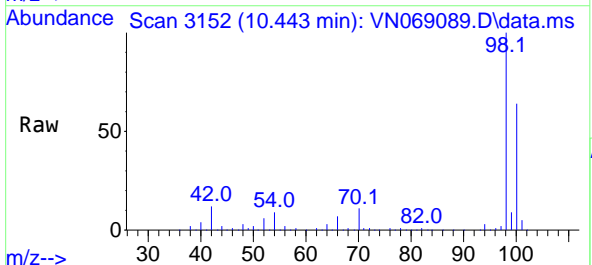


Tgt Ion:113 Resp: 172303
 Ion Ratio Lower Upper
 113 100
 111 102.8 83.2 124.8
 192 17.5 15.0 22.4

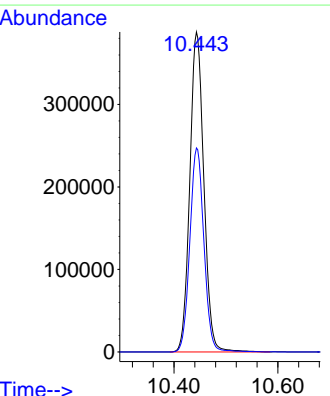
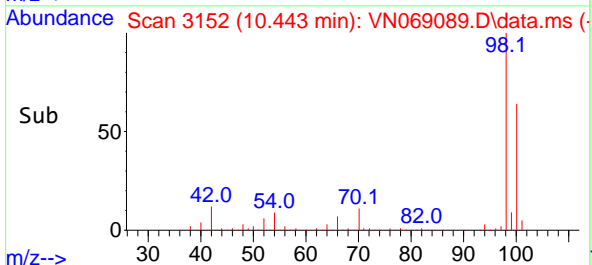
Manual Integrations
APPROVED
 MMDadoda
 10/22/2021 7:09:14 PM

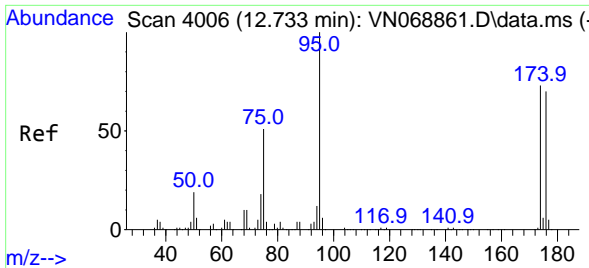


#50
 Toluene-d8
 Concen: 53.519 ug/l
 RT: 10.443 min Scan# 3152
 Delta R.T. 0.000 min
 Lab File: VN069089.D
 Acq: 21 Oct 2021 15:37



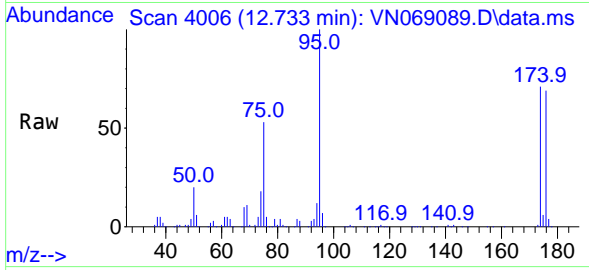
Tgt Ion: 98 Resp: 727911
 Ion Ratio Lower Upper
 98 100
 100 64.0 51.5 77.3





#62
 4-Bromofluorobenzene
 Concen: 50.858 ug/l
 RT: 12.733 min Scan# 4006
 Delta R.T. 0.000 min
 Lab File: VN069089.D
 Acq: 21 Oct 2021 15:37

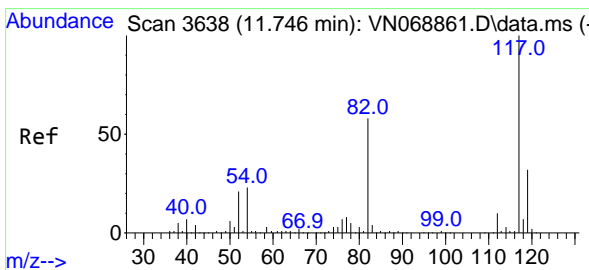
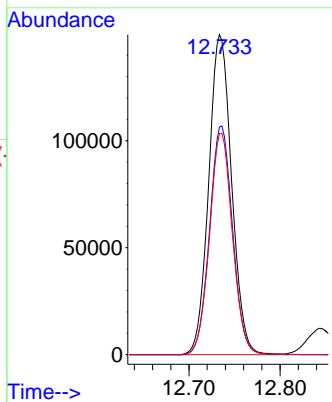
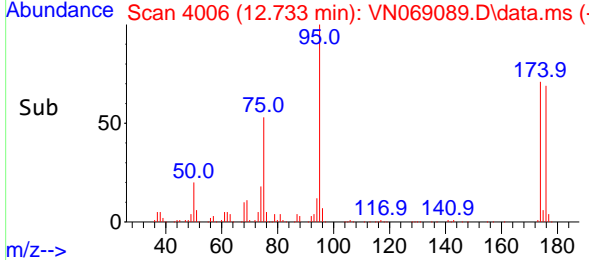
Instrument :
 MSVOA_N
ClientSampled :
 30855



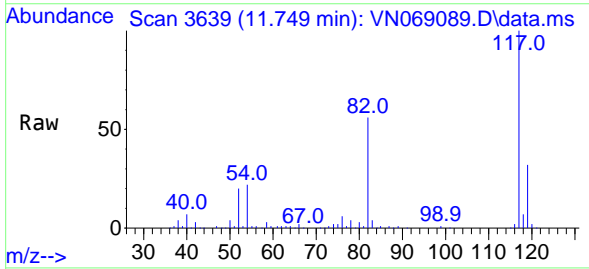
Tgt Ion: 95 Resp: 260974

Ion	Ratio	Lower	Upper
95	100		
174	71.8	0.0	144.8
176	69.2	0.0	140.0

Manual Integrations
APPROVED
 MMDadoda
 10/22/2021 7:09:14 PM

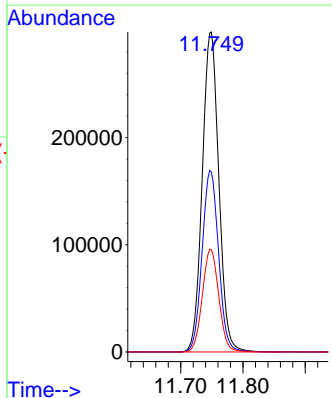
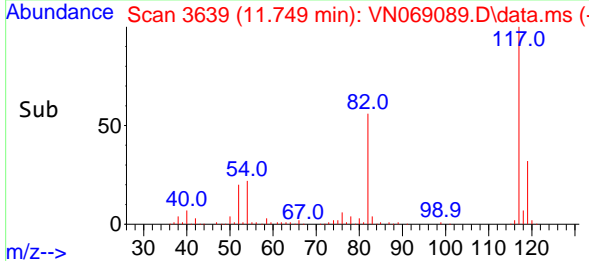


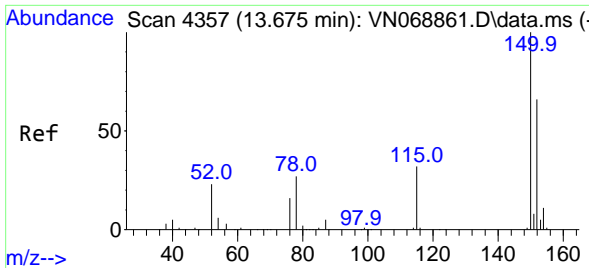
#63
 Chlorobenzene-d5
 Concen: 50.000 ug/l
 RT: 11.749 min Scan# 3639
 Delta R.T. 0.003 min
 Lab File: VN069089.D
 Acq: 21 Oct 2021 15:37



Tgt Ion: 117 Resp: 550829

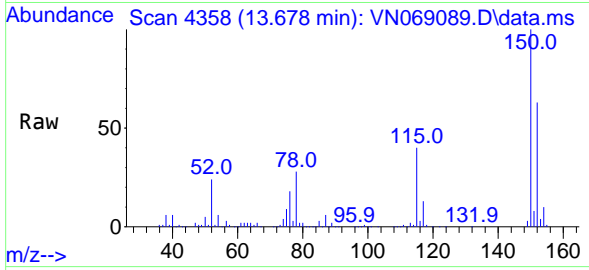
Ion	Ratio	Lower	Upper
117	100		
82	56.3	46.4	69.6
119	31.9	26.0	39.0





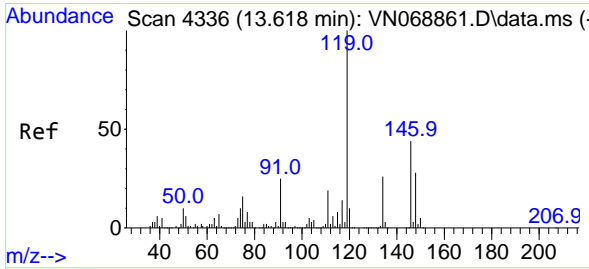
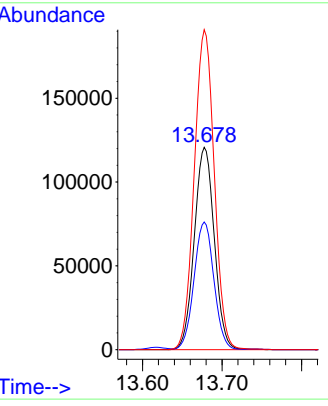
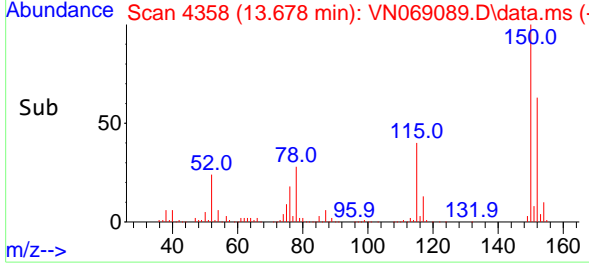
#72
 1,4-Dichlorobenzene-d4
 Concen: 50.000 ug/l
 RT: 13.678 min Scan# 4358
 Delta R.T. 0.003 min
 Lab File: VN069089.D
 Acq: 21 Oct 2021 15:37

Instrument :
 MSVOA_N
ClientSampled :
 30855

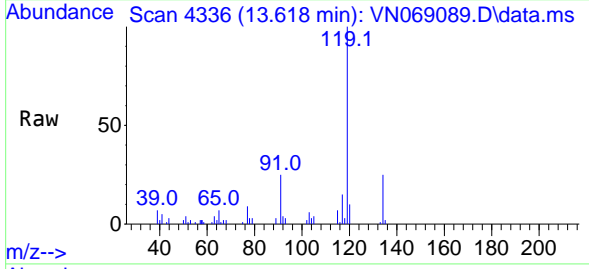


Tgt Ion:152 Resp: 211471
 Ion Ratio Lower Upper
 152 100
 115 62.1 31.4 94.3
 150 158.1 0.0 351.0

Manual Integrations
APPROVED
 MMDadoda
 10/22/2021 7:09:14 PM



#86
 p-Isopropyltoluene
 Concen: 2.214 ug/l
 RT: 13.618 min Scan# 4336
 Delta R.T. 0.000 min
 Lab File: VN069089.D
 Acq: 21 Oct 2021 15:37



Tgt Ion:119 Resp: 31386
 Ion Ratio Lower Upper
 119 100
 134 25.5 12.9 38.6
 91 33.9 12.8 38.4

