

Data Path : Z:\voasrv\HPCHEM1\MSVOA\_N\Data\VN102121\  
 Data File : VN069112.D  
 Acq On : 22 Oct 2021 2:06  
 Operator : JC/MD  
 Sample : M4274-04  
 Misc : 5.00mL/MSVOA\_N/WATER  
 ALS Vial : 38 Sample Multiplier: 1

Instrument :  
 MSVOA\_N  
 ClientSampleId :  
 WC-2-CS

Quant Time: Oct 22 03:17:21 2021  
 Quant Method : Z:\voasrv\HPCHEM1\MSVOA\_N\methods\82N101221W.M  
 Quant Title : SW846 8260  
 QLast Update : Wed Oct 13 05:44:40 2021  
 Response via : Initial Calibration

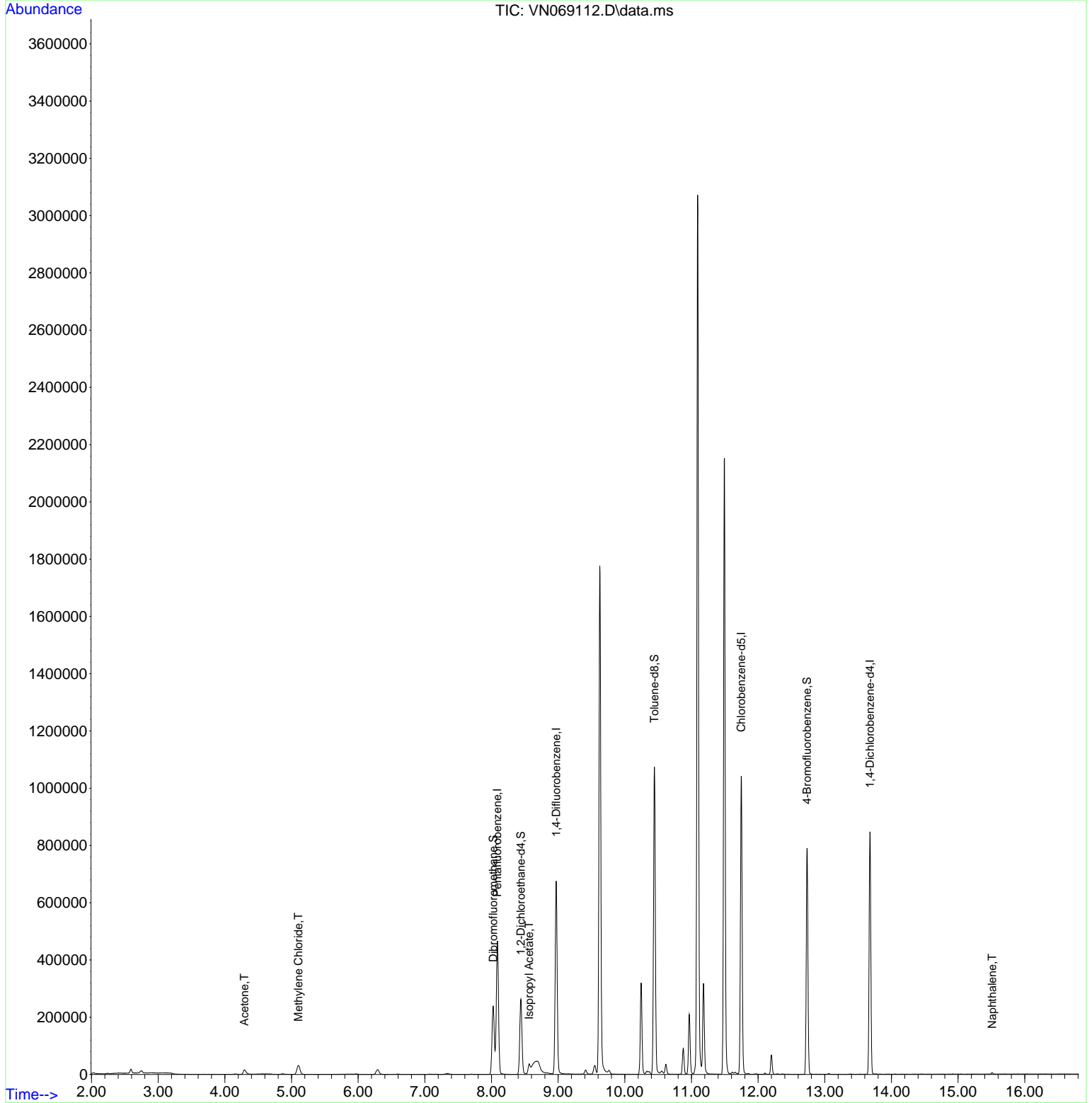
Compound	R.T.	QIon	Response	Conc	Units	Dev(Min)
-----						
Internal Standards						
1) Pentafluorobenzene	8.088	168	355839	50.000	ug/l	0.00
34) 1,4-Difluorobenzene	8.971	114	611609	50.000	ug/l	0.00
63) Chlorobenzene-d5	11.747	117	607985	50.000	ug/l	0.00
72) 1,4-Dichlorobenzene-d4	13.678	152	228832	50.000	ug/l	0.00
System Monitoring Compounds						
33) 1,2-Dichloroethane-d4	8.440	65	222954	47.522	ug/l	0.00
Spiked Amount	50.000	Range	61 - 141	Recovery	=	95.040%
35) Dibromofluoromethane	8.027	113	176905	49.715	ug/l	0.00
Spiked Amount	50.000	Range	69 - 133	Recovery	=	99.420%
50) Toluene-d8	10.443	98	770536	54.119	ug/l	0.00
Spiked Amount	50.000	Range	65 - 126	Recovery	=	108.240%
62) 4-Bromofluorobenzene	12.734	95	278680	51.879	ug/l	0.00
Spiked Amount	50.000	Range	58 - 135	Recovery	=	103.760%
Target Compounds						
					Qvalue	
16) Acetone	4.293	43	31433	17.953	ug/l	100
20) Methylene Chloride	5.103	84	26648	6.613	ug/l	99
43) Isopropyl Acetate	8.563	43	46104	4.843	ug/l #	84
95) Naphthalene	15.512	128	5472	4.288	ug/l #	80
-----						

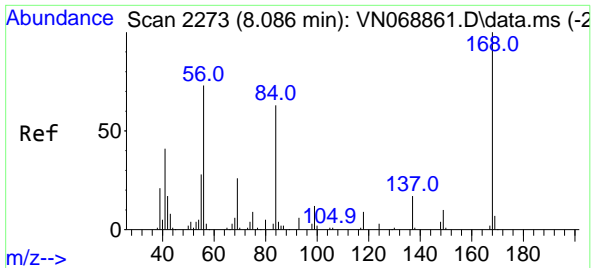
(#) = qualifier out of range (m) = manual integration (+) = signals summed

Data Path : Z:\voasrv\HPCHEM1\MSVOA\_N\Data\VN102121\  
 Data File : VN069112.D  
 Acq On : 22 Oct 2021 2:06  
 Operator : JC/MD  
 Sample : M4274-04  
 Misc : 5.00mL/MSVOA\_N/WATER  
 ALS Vial : 38 Sample Multiplier: 1

**Instrument :**  
 MSVOA\_N  
**ClientSampleId :**  
 WC-2-CS

Quant Time: Oct 22 03:17:21 2021  
 Quant Method : Z:\voasrv\HPCHEM1\MSVOA\_N\methods\82N101221W.M  
 Quant Title : SW846 8260  
 QLast Update : Wed Oct 13 05:44:40 2021  
 Response via : Initial Calibration

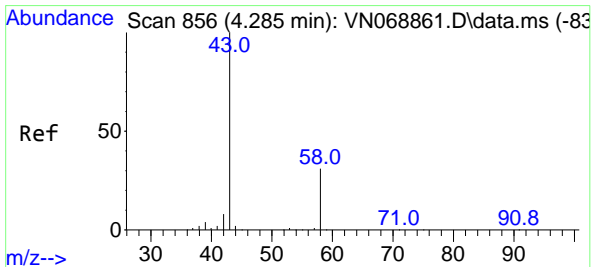
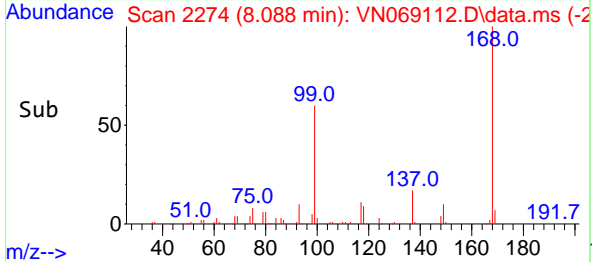
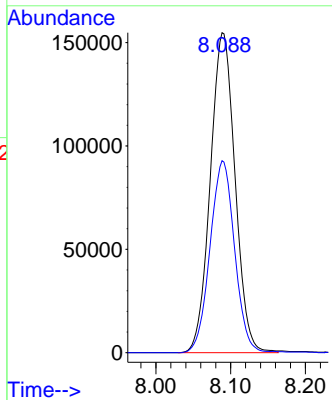
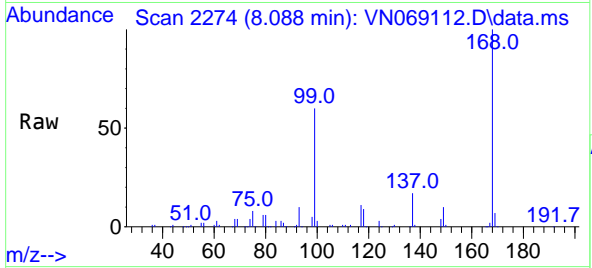




#1  
 Pentafluorobenzene  
 Concen: 50.000 ug/l  
 RT: 8.088 min Scan# 2274  
 Delta R.T. 0.002 min  
 Lab File: VN069112.D  
 Acq: 22 Oct 2021 2:06

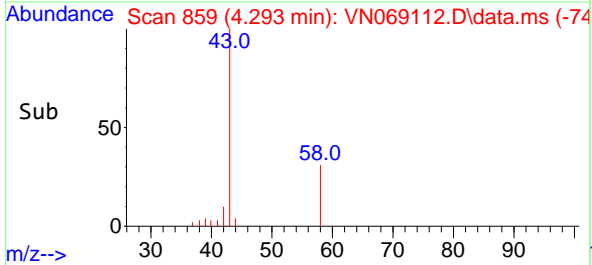
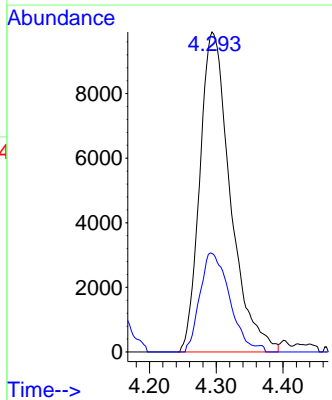
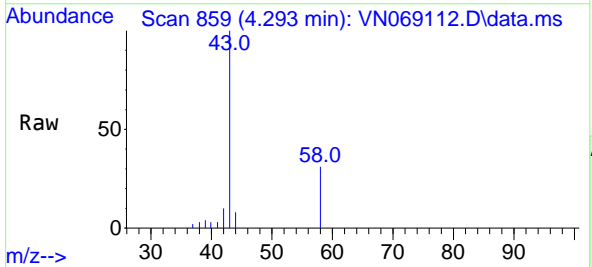
Instrument :  
 MSVOA\_N  
 ClientSampled :  
 WC-2-CS

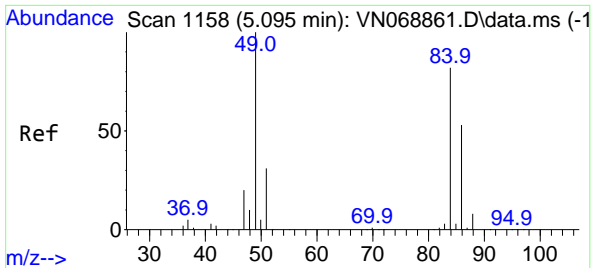
Tgt Ion:168 Resp: 355839  
 Ion Ratio Lower Upper  
 168 100  
 99 60.0 48.9 73.3



#16  
 Acetone  
 Concen: 17.953 ug/l  
 RT: 4.293 min Scan# 859  
 Delta R.T. 0.008 min  
 Lab File: VN069112.D  
 Acq: 22 Oct 2021 2:06

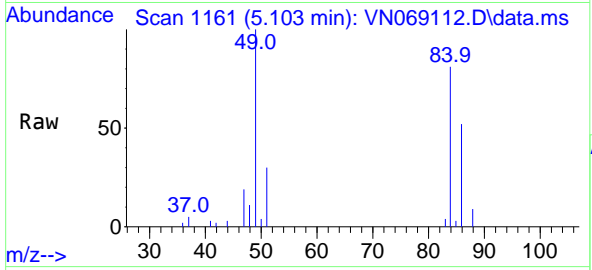
Tgt Ion: 43 Resp: 31433  
 Ion Ratio Lower Upper  
 43 100  
 58 30.8 24.5 36.7





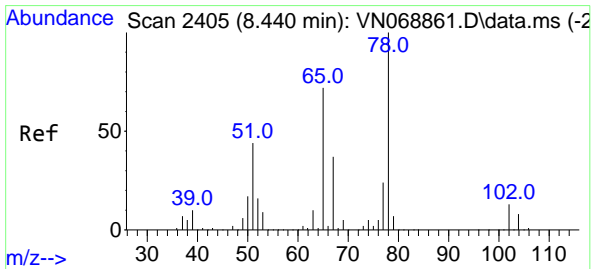
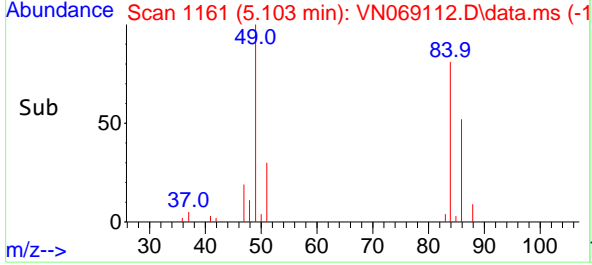
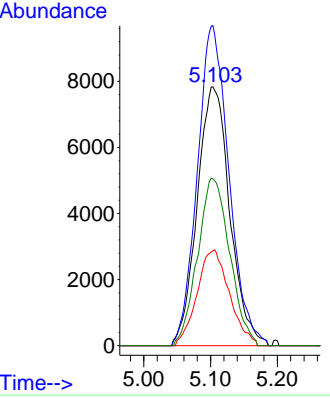
#20  
 Methylene Chloride  
 Concen: 6.613 ug/l  
 RT: 5.103 min Scan# 1161  
 Delta R.T. 0.008 min  
 Lab File: VN069112.D  
 Acq: 22 Oct 2021 2:06

**Instrument :**  
 MSVOA\_N  
**ClientSampled :**  
 WC-2-CS

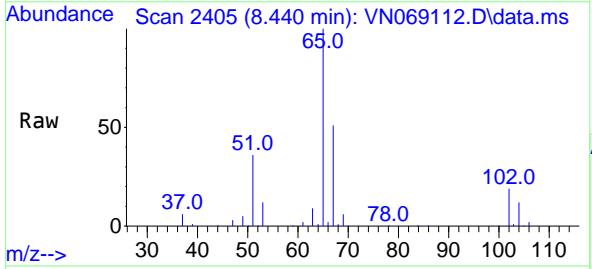


Tgt Ion: 84 Resp: 26648

Ion	Ratio	Lower	Upper
84	100		
49	123.6	97.6	146.4
51	36.6	30.3	45.5
86	64.4	51.8	77.6

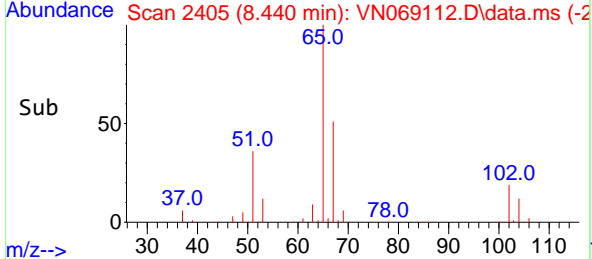
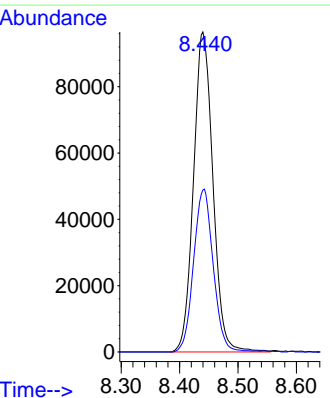


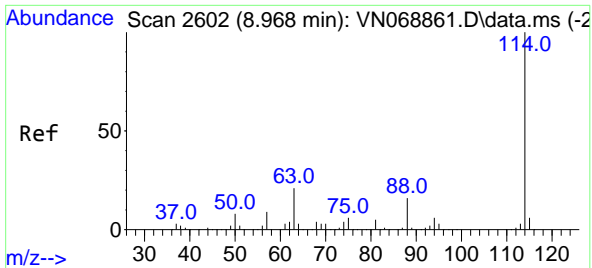
#33  
 1,2-Dichloroethane-d4  
 Concen: 47.522 ug/l  
 RT: 8.440 min Scan# 2405  
 Delta R.T. 0.000 min  
 Lab File: VN069112.D  
 Acq: 22 Oct 2021 2:06



Tgt Ion: 65 Resp: 222954

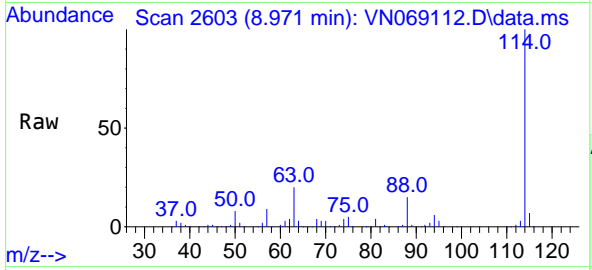
Ion	Ratio	Lower	Upper
65	100		
67	51.4	0.0	103.8





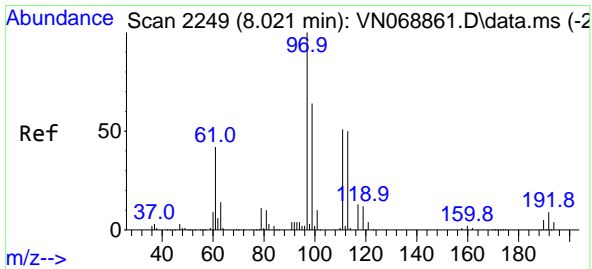
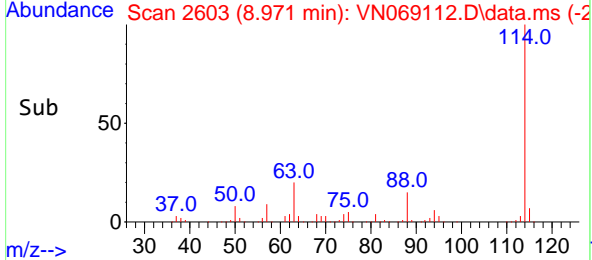
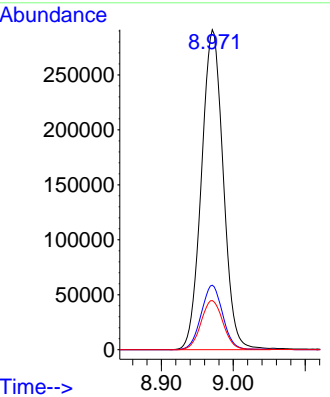
#34  
 1,4-Difluorobenzene  
 Concen: 50.000 ug/l  
 RT: 8.971 min Scan# 2603  
 Delta R.T. 0.003 min  
 Lab File: VN069112.D  
 Acq: 22 Oct 2021 2:06

Instrument :  
 MSVOA\_N  
 ClientSampled :  
 WC-2-CS

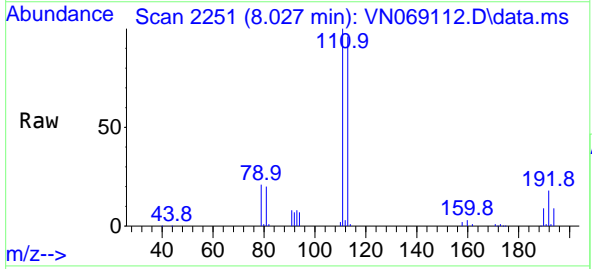


Tgt Ion:114 Resp: 611609

Ion	Ratio	Lower	Upper
114	100		
63	20.2	0.0	42.6
88	15.4	0.0	32.0

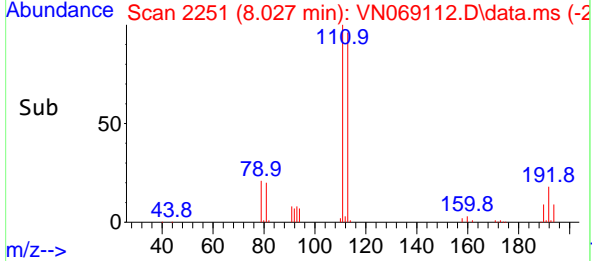
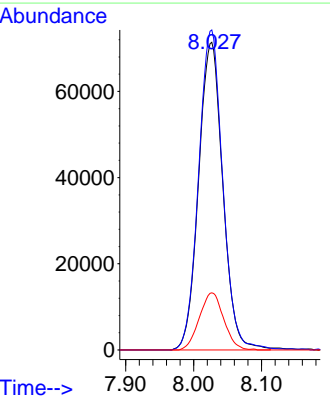


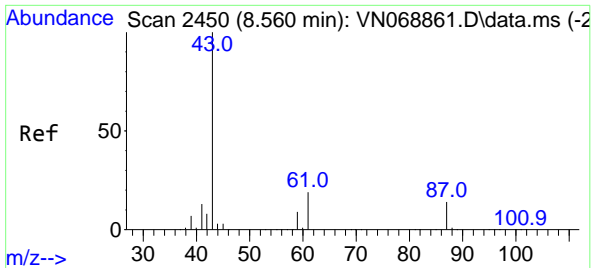
#35  
 Dibromofluoromethane  
 Concen: 49.715 ug/l  
 RT: 8.027 min Scan# 2251  
 Delta R.T. 0.006 min  
 Lab File: VN069112.D  
 Acq: 22 Oct 2021 2:06



Tgt Ion:113 Resp: 176905

Ion	Ratio	Lower	Upper
113	100		
111	103.6	83.2	124.8
192	18.7	15.0	22.4



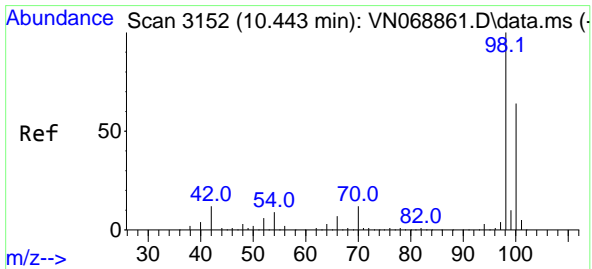
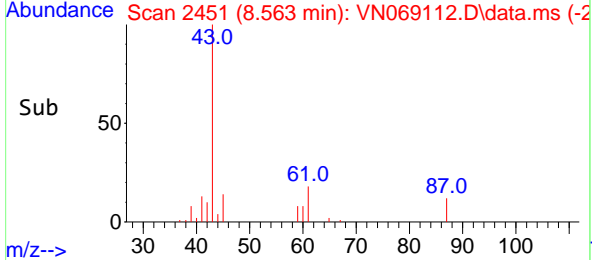
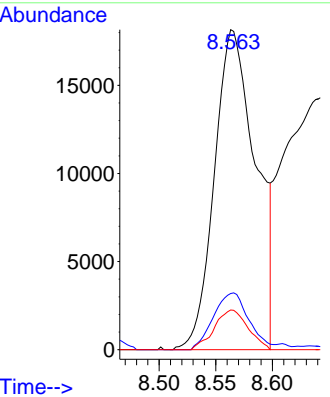
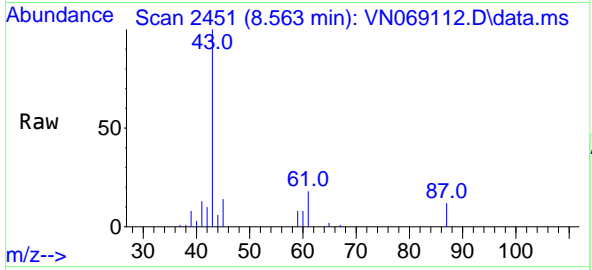


#43  
 Isopropyl Acetate  
 Concen: 4.843 ug/l  
 RT: 8.563 min Scan# 2451  
 Delta R.T. 0.003 min  
 Lab File: VN069112.D  
 Acq: 22 Oct 2021 2:06

Instrument :  
 MSVOA\_N  
 ClientSampled :  
 WC-2-CS

Tgt Ion: 43 Resp: 46104

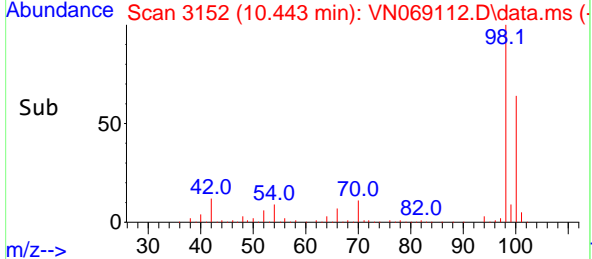
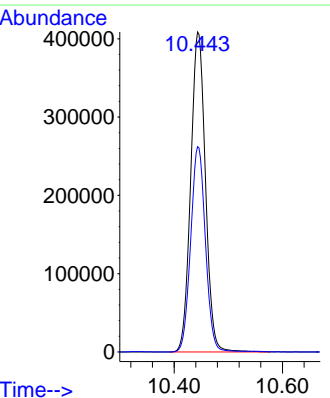
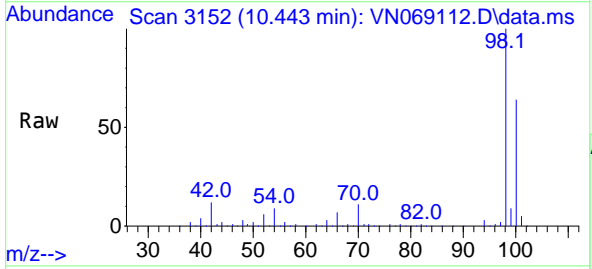
Ion	Ratio	Lower	Upper
43	100		
61	15.2	20.4	30.6#
87	10.1	10.7	16.1#

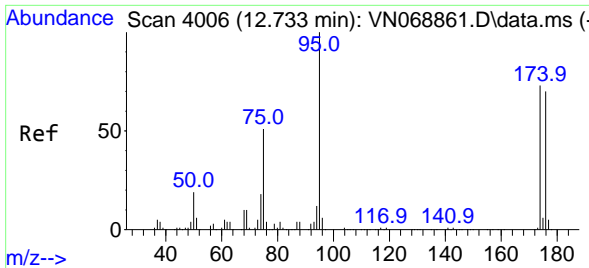


#50  
 Toluene-d8  
 Concen: 54.119 ug/l  
 RT: 10.443 min Scan# 3152  
 Delta R.T. 0.000 min  
 Lab File: VN069112.D  
 Acq: 22 Oct 2021 2:06

Tgt Ion: 98 Resp: 770536

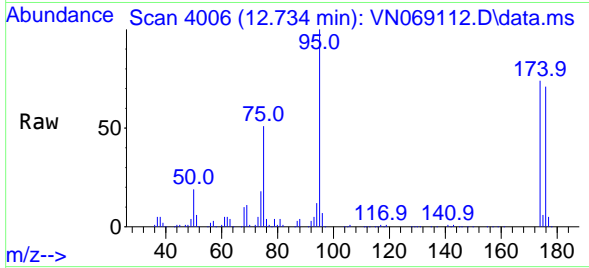
Ion	Ratio	Lower	Upper
98	100		
100	64.3	51.5	77.3



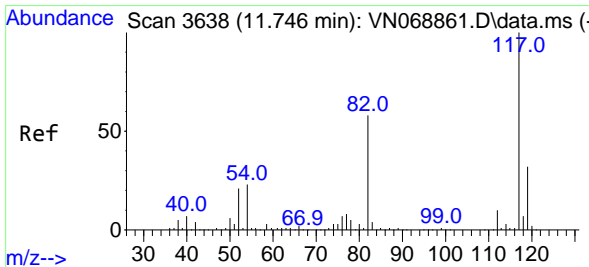
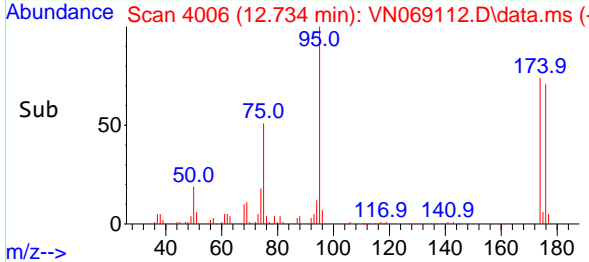
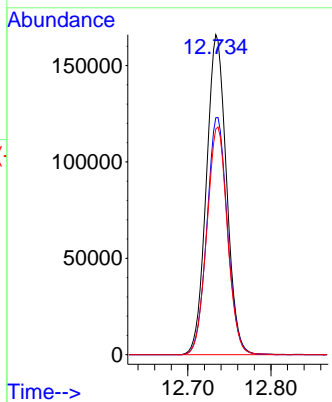


#62  
 4-Bromofluorobenzene  
 Concen: 51.879 ug/l  
 RT: 12.734 min Scan# 4006  
 Delta R.T. 0.000 min  
 Lab File: VN069112.D  
 Acq: 22 Oct 2021 2:06

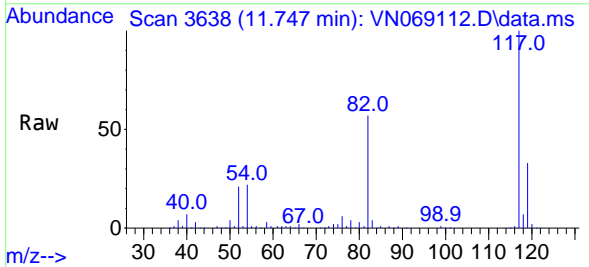
Instrument :  
 MSVOA\_N  
 ClientSampled :  
 WC-2-CS



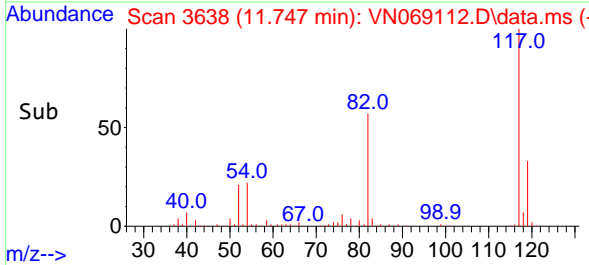
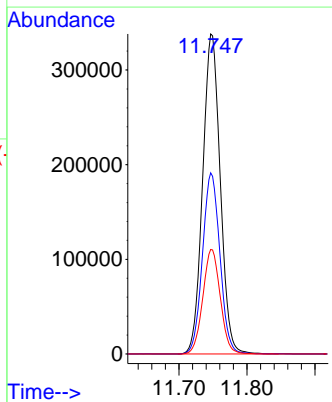
Tgt Ion: 95 Resp: 278680  
 Ion Ratio Lower Upper  
 95 100  
 174 75.6 0.0 144.8  
 176 72.8 0.0 140.0

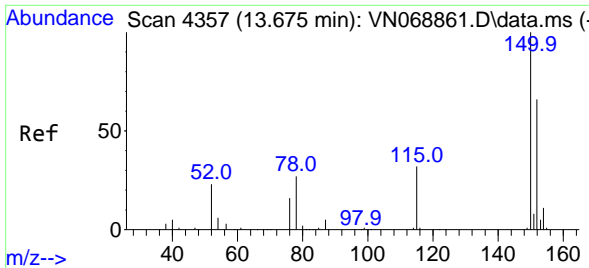


#63  
 Chlorobenzene-d5  
 Concen: 50.000 ug/l  
 RT: 11.747 min Scan# 3638  
 Delta R.T. 0.000 min  
 Lab File: VN069112.D  
 Acq: 22 Oct 2021 2:06



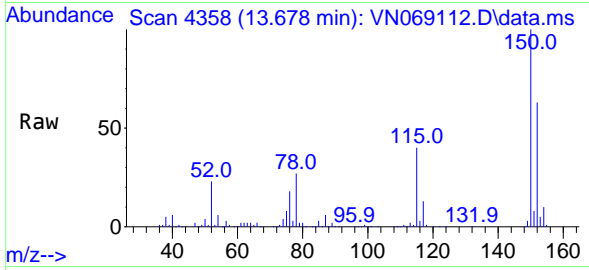
Tgt Ion: 117 Resp: 607985  
 Ion Ratio Lower Upper  
 117 100  
 82 56.6 46.4 69.6  
 119 32.7 26.0 39.0



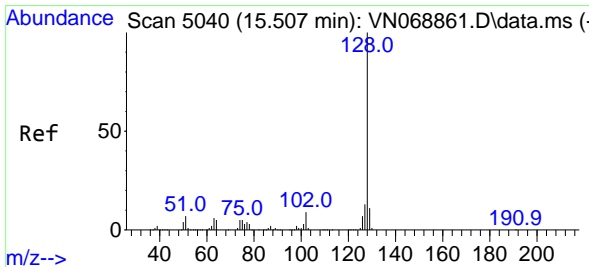
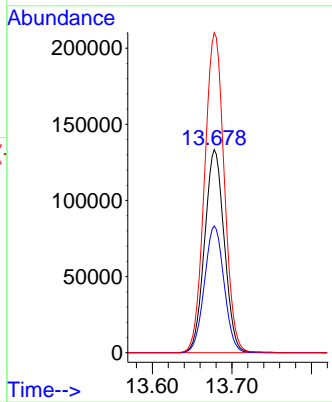
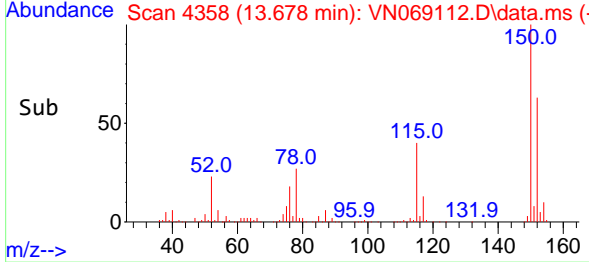


#72  
 1,4-Dichlorobenzene-d4  
 Concen: 50.000 ug/l  
 RT: 13.678 min Scan# 4358  
 Delta R.T. 0.003 min  
 Lab File: VN069112.D  
 Acq: 22 Oct 2021 2:06

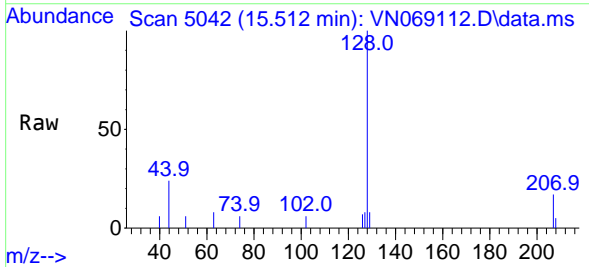
Instrument :  
 MSVOA\_N  
 ClientSampled :  
 WC-2-CS



Tgt Ion:152 Resp: 228832  
 Ion Ratio Lower Upper  
 152 100  
 115 62.5 31.4 94.3  
 150 158.1 0.0 351.0



#95  
 Naphthalene  
 Concen: 4.288 ug/l  
 RT: 15.512 min Scan# 5042  
 Delta R.T. 0.005 min  
 Lab File: VN069112.D  
 Acq: 22 Oct 2021 2:06



Tgt Ion:128 Resp: 5472  
 Ion Ratio Lower Upper  
 128 100  
 127 4.5 10.5 15.7#  
 129 4.0 8.9 13.3#

