

Data Path : Z:\voasrv\HPCHEM1\MSVOA_N\Data\VN102121\
 Data File : VN069120.D
 Acq On : 22 Oct 2021 5:27
 Operator : JC/MD
 Sample : M4284-07
 Misc : 5.00mL/MSVOA_N/WATER
 ALS Vial : 46 Sample Multiplier: 1

Instrument :
 MSVOA_N
 ClientSampled :
 20876

Manual Integrations
 APPROVED

MMDadoda
 10/22/2021 7:09:34 PM

Quant Time: Oct 22 07:22:01 2021
 Quant Method : Z:\voasrv\HPCHEM1\MSVOA_N\methods\82N101221W.M
 Quant Title : SW846 8260
 QLast Update : Wed Oct 13 05:44:40 2021
 Response via : Initial Calibration

Compound	R.T.	QIon	Response	Conc	Units	Dev(Min)

Internal Standards						
1) Pentafluorobenzene	8.088	168	321945	50.000	ug/l	0.00
34) 1,4-Difluorobenzene	8.971	114	559653	50.000	ug/l	0.00
63) Chlorobenzene-d5	11.747	117	537922	50.000	ug/l	0.00
72) 1,4-Dichlorobenzene-d4	13.678	152	214154	50.000	ug/l	0.00
System Monitoring Compounds						
33) 1,2-Dichloroethane-d4	8.440	65	207593	48.906	ug/l	0.00
Spiked Amount	50.000	Range 61 - 141	Recovery =	97.820%		
35) Dibromofluoromethane	8.024	113	162916	50.034	ug/l	0.00
Spiked Amount	50.000	Range 69 - 133	Recovery =	100.060%		
50) Toluene-d8	10.443	98	696202	53.438	ug/l	0.00
Spiked Amount	50.000	Range 65 - 126	Recovery =	106.880%		
62) 4-Bromofluorobenzene	12.734	95	255924	52.066	ug/l	0.00
Spiked Amount	50.000	Range 58 - 135	Recovery =	104.140%		
Target Compounds						
						Qvalue
16) Acetone	4.291	43	110313	69.640	ug/l	97
17) Carbon Disulfide	4.538	76	17958	2.127	ug/l	96
18) Methyl Acetate	4.862	43	9429m	1.569	ug/l	
25) 2-Butanone	7.340	43	30056	12.548	ug/l	99
40) Benzene	8.461	78	6050	0.416	ug/l	98
51) 4-Methyl-2-Pentanone	10.331	43	15989	3.166	ug/l	94
52) Toluene	10.508	92	7740	0.826	ug/l	100
67) Ethyl Benzene	11.846	91	5719	0.302	ug/l	98
68) m/p-Xylenes	11.953	106	6615	0.923	ug/l	95
69) o-Xylene	12.286	106	4153	0.579	ug/l	99
84) 1,2,4-Trimethylbenzene	13.372	105	11831	0.827	ug/l	98
95) Naphthalene	15.509	128	8369	4.590	ug/l #	91

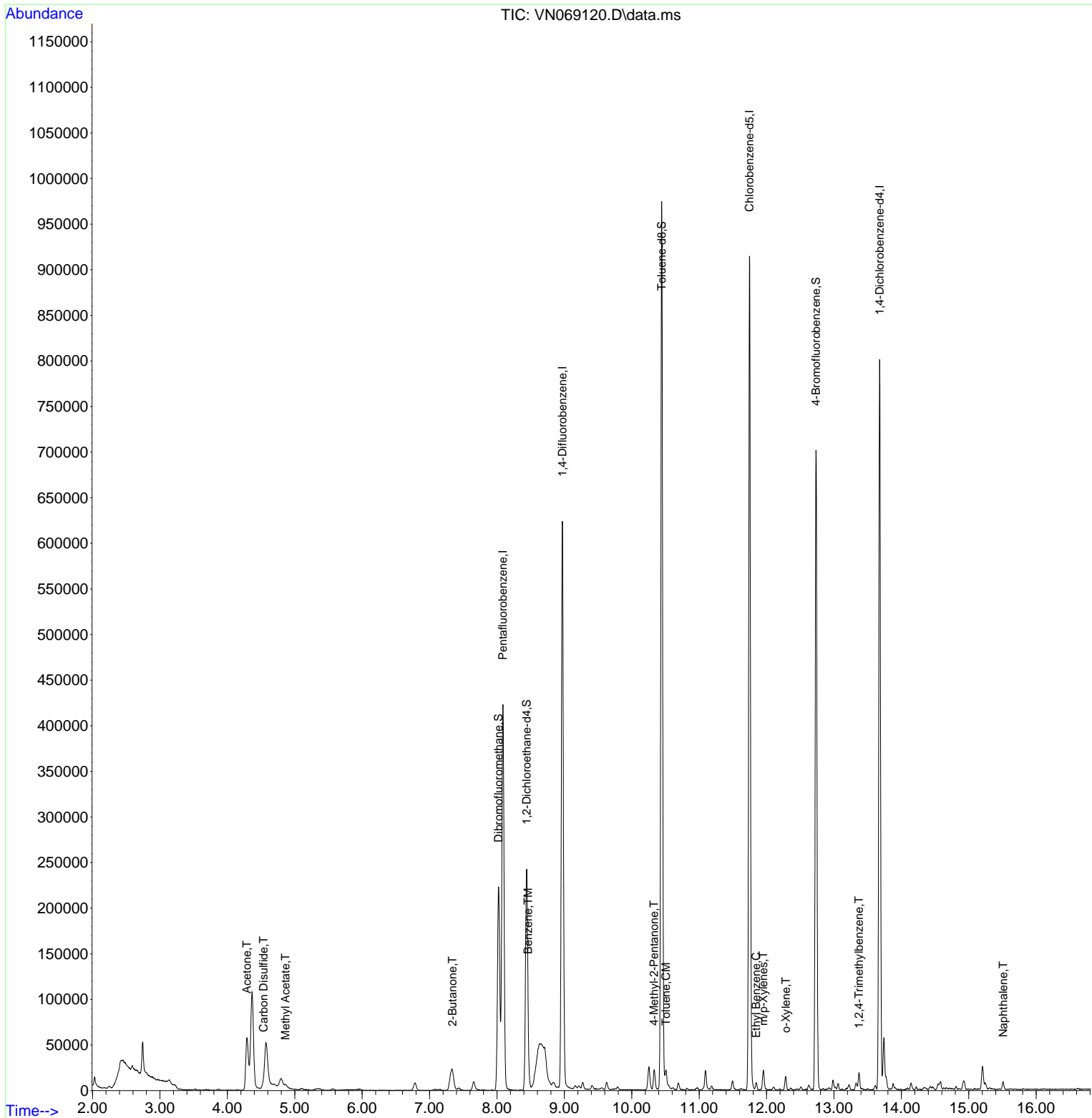
(#) = qualifier out of range (m) = manual integration (+) = signals summed

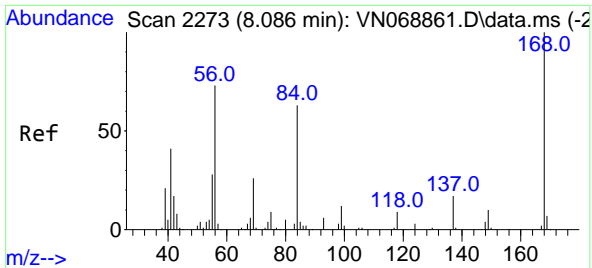
Data Path : Z:\voasrv\HPCHEM1\MSVOA_N\Data\VN102121\
 Data File : VN069120.D
 Acq On : 22 Oct 2021 5:27
 Operator : JC/MD
 Sample : M4284-07
 Misc : 5.00mL/MSVOA_N/WATER
 ALS Vial : 46 Sample Multiplier: 1

Instrument :
 MSVOA_N
 ClientSampled :
 20876

Manual Integrations
APPROVED
 MMDadoda
 10/22/2021 7:09:34 PM

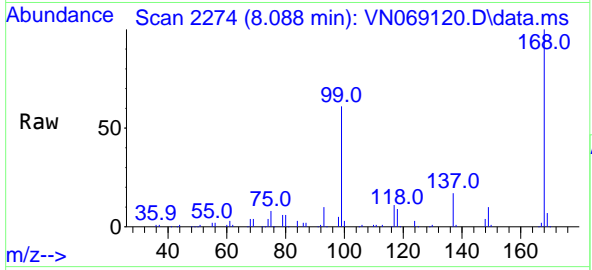
Quant Time: Oct 22 07:22:01 2021
 Quant Method : Z:\voasrv\HPCHEM1\MSVOA_N\methods\82N101221W.M
 Quant Title : SW846 8260
 QLast Update : Wed Oct 13 05:44:40 2021
 Response via : Initial Calibration





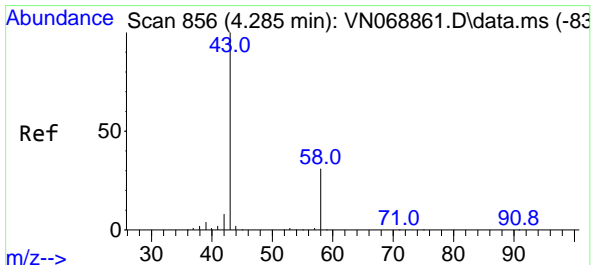
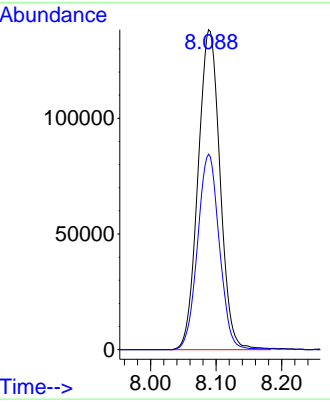
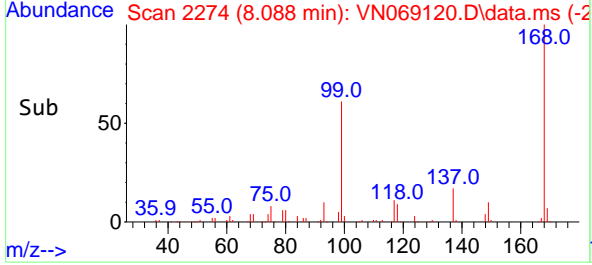
#1
 Pentafluorobenzene
 Concen: 50.000 ug/l
 RT: 8.088 min Scan# 2274
 Delta R.T. 0.002 min
 Lab File: VN069120.D
 Acq: 22 Oct 2021 5:27

Instrument :
 MSVOA_N
 ClientSampled :
 20876

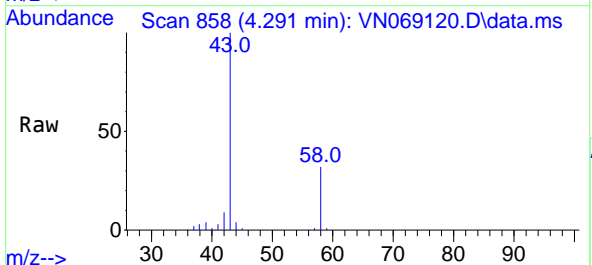


Tgt Ion:168 Resp: 321945
 Ion Ratio Lower Upper
 168 100
 99 61.1 48.9 73.3

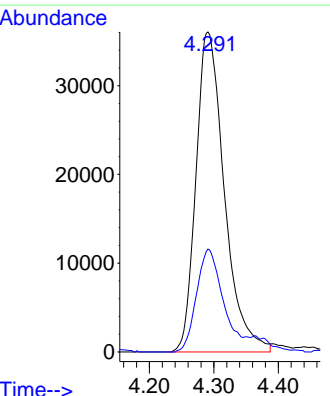
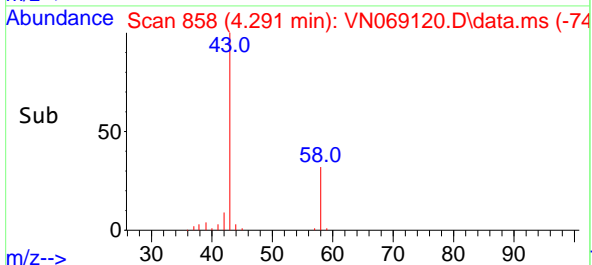
Manual Integrations
 APPROVED
 MMDadoda
 10/22/2021 7:09:34 PM

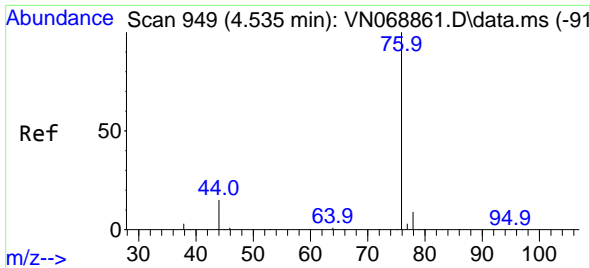


#16
 Acetone
 Concen: 69.640 ug/l
 RT: 4.291 min Scan# 858
 Delta R.T. 0.006 min
 Lab File: VN069120.D
 Acq: 22 Oct 2021 5:27



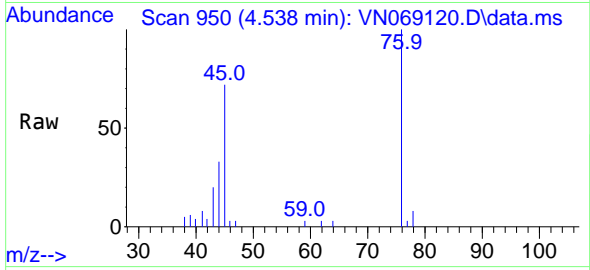
Tgt Ion: 43 Resp: 110313
 Ion Ratio Lower Upper
 43 100
 58 32.1 24.5 36.7





#17
 Carbon Disulfide
 Concen: 2.127 ug/l
 RT: 4.538 min Scan# 950
 Delta R.T. 0.003 min
 Lab File: VN069120.D
 Acq: 22 Oct 2021 5:27

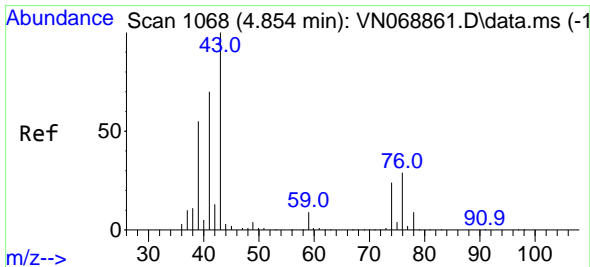
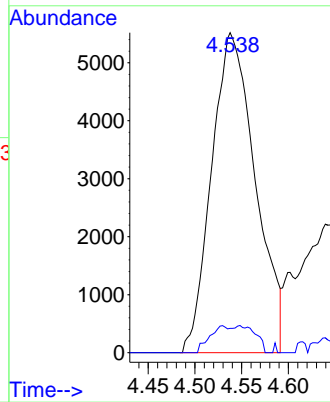
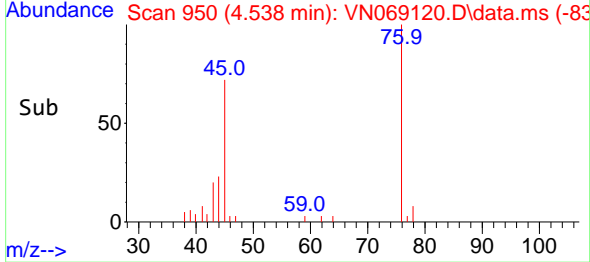
Instrument :
 MSVOA_N
 ClientSampled :
 20876



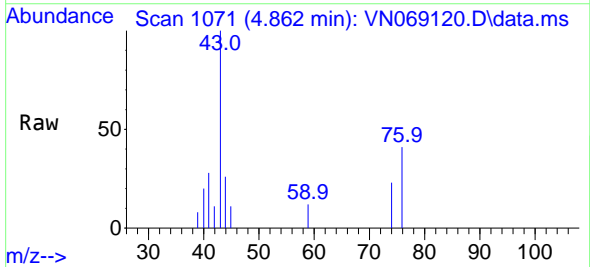
Tgt Ion: 76 Resp: 17958
 Ion Ratio Lower Upper
 76 100
 78 7.6 7.2 10.8

Manual Integrations
 APPROVED

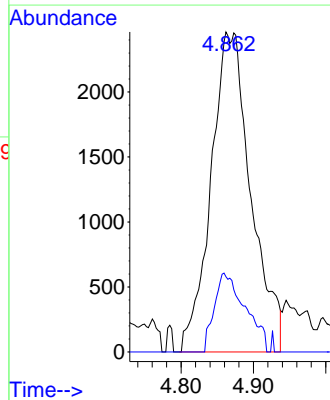
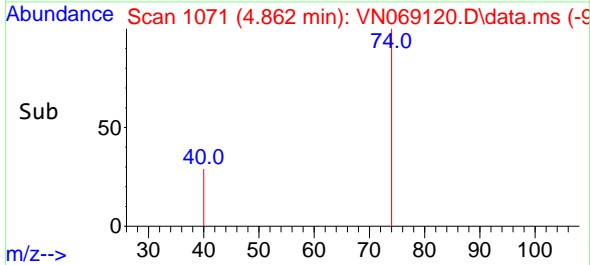
MMDadoda
 10/22/2021 7:09:34 PM

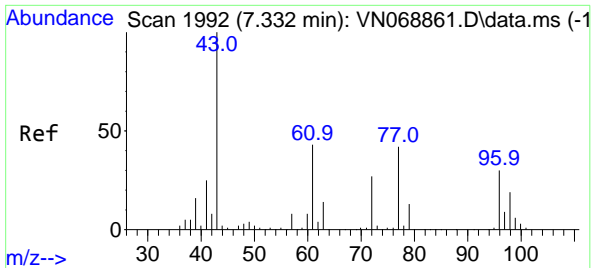


#18
 Methyl Acetate
 Concen: 1.569 ug/l m
 RT: 4.862 min Scan# 1071
 Delta R.T. 0.008 min
 Lab File: VN069120.D
 Acq: 22 Oct 2021 5:27



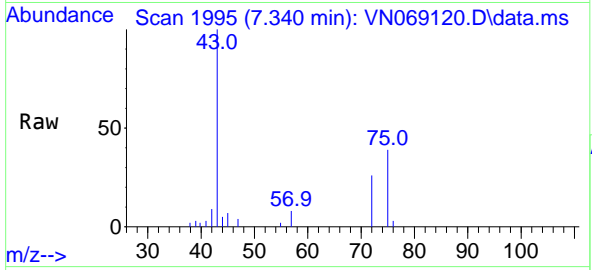
Tgt Ion: 43 Resp: 9429
 Ion Ratio Lower Upper
 43 100
 74 19.1 18.9 28.3





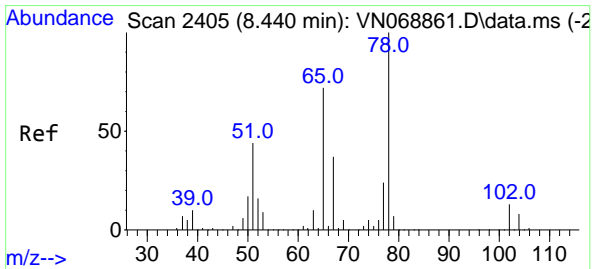
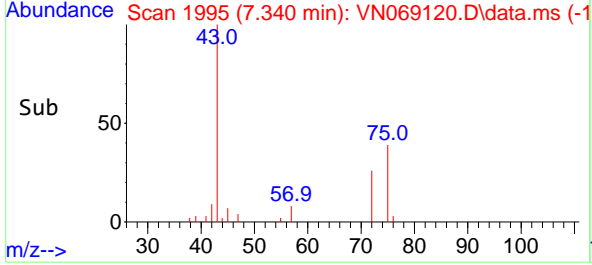
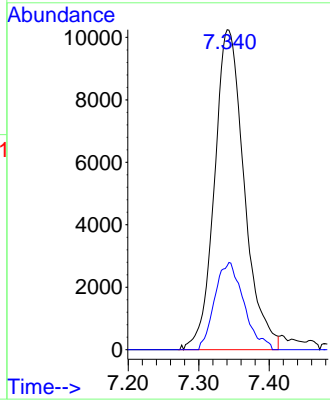
#25
 2-Butanone
 Concen: 12.548 ug/l
 RT: 7.340 min Scan# 1995
 Delta R.T. 0.008 min
 Lab File: VN069120.D
 Acq: 22 Oct 2021 5:27

Instrument :
 MSVOA_N
ClientSampled :
 20876

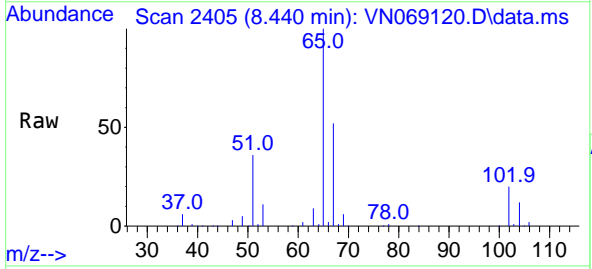


Tgt Ion: 43 Resp: 30056
 Ion Ratio Lower Upper
 43 100
 72 26.2 21.2 31.8

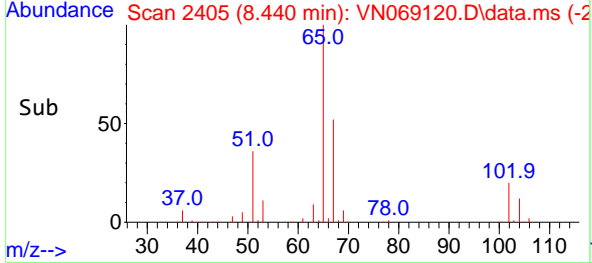
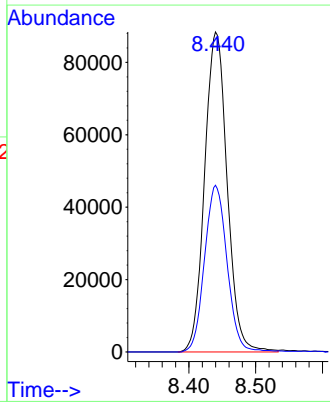
Manual Integrations
APPROVED
 MMDadoda
 10/22/2021 7:09:34 PM

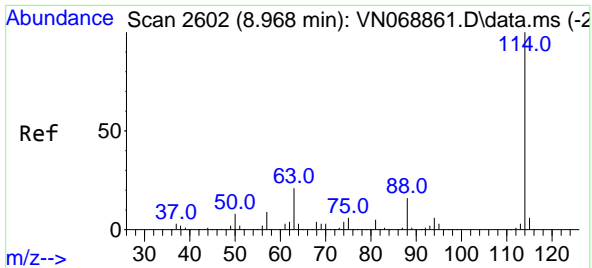


#33
 1,2-Dichloroethane-d4
 Concen: 48.906 ug/l
 RT: 8.440 min Scan# 2405
 Delta R.T. 0.000 min
 Lab File: VN069120.D
 Acq: 22 Oct 2021 5:27



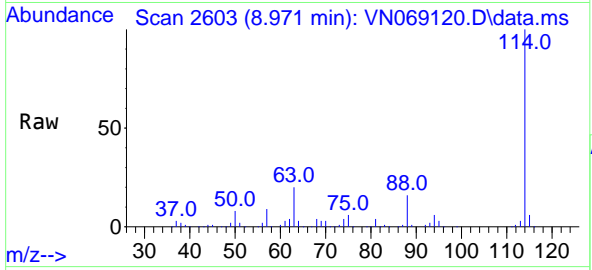
Tgt Ion: 65 Resp: 207593
 Ion Ratio Lower Upper
 65 100
 67 52.0 0.0 103.8





#34
 1,4-Difluorobenzene
 Concen: 50.000 ug/l
 RT: 8.971 min Scan# 2603
 Delta R.T. 0.003 min
 Lab File: VN069120.D
 Acq: 22 Oct 2021 5:27

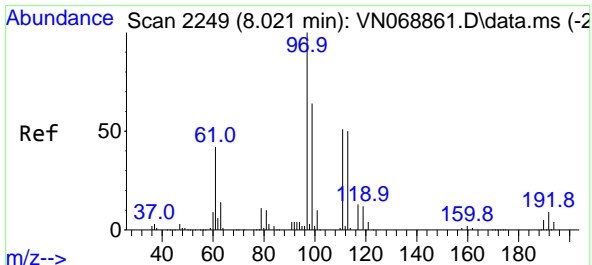
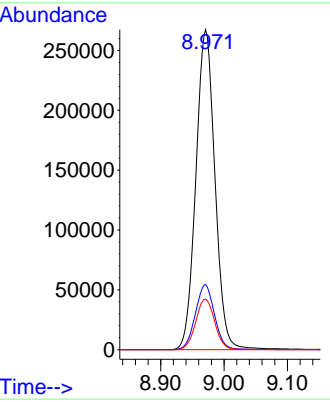
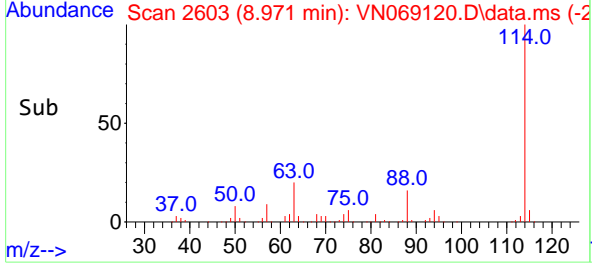
Instrument :
 MSVOA_N
Client Sampled :
 20876



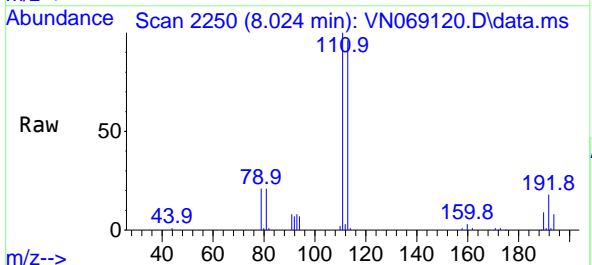
Tgt Ion: 114 Resp: 559653

Ion	Ratio	Lower	Upper
114	100		
63	20.4	0.0	42.6
88	15.8	0.0	32.0

Manual Integrations
APPROVED
 MMDadoda
 10/22/2021 7:09:34 PM

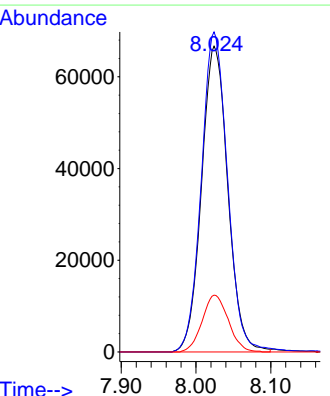
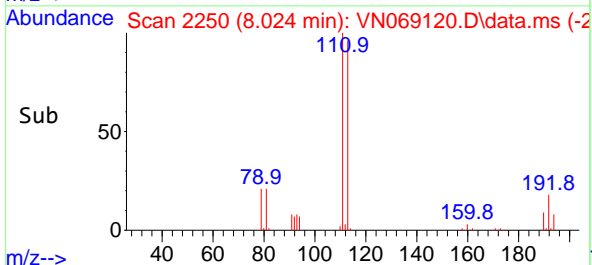


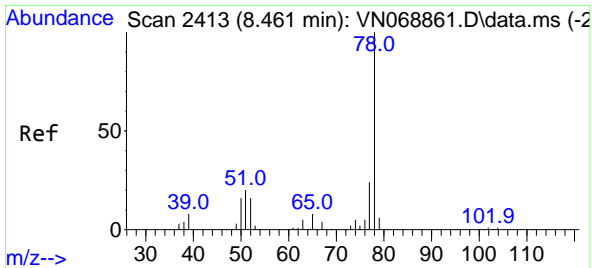
#35
 Dibromofluoromethane
 Concen: 50.034 ug/l
 RT: 8.024 min Scan# 2250
 Delta R.T. 0.003 min
 Lab File: VN069120.D
 Acq: 22 Oct 2021 5:27



Tgt Ion: 113 Resp: 162916

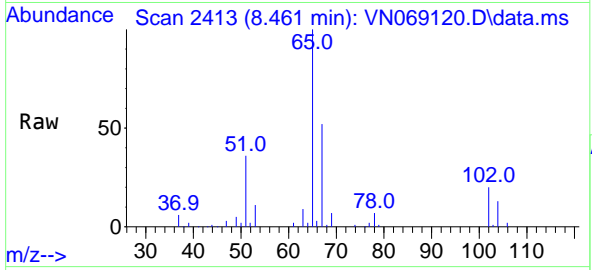
Ion	Ratio	Lower	Upper
113	100		
111	104.8	83.2	124.8
192	18.5	15.0	22.4





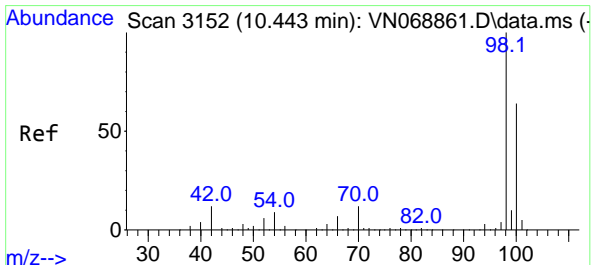
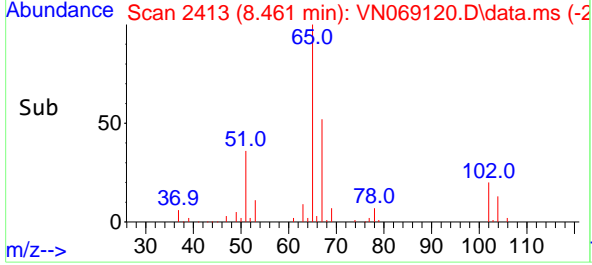
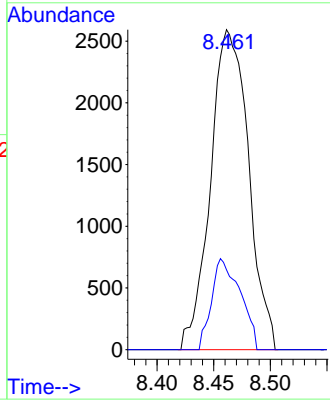
#40
Benzene
Concen: 0.416 ug/l
RT: 8.461 min Scan# 2413
Delta R.T. 0.000 min
Lab File: VN069120.D
Acq: 22 Oct 2021 5:27

Instrument : MSVOA_N
ClientSampled : 20876

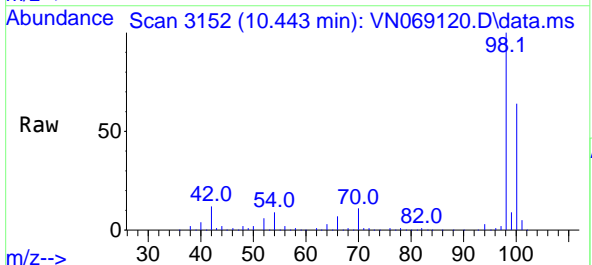


Tgt Ion: 78 Resp: 6050
Ion Ratio Lower Upper
78 100
77 25.0 19.1 28.7

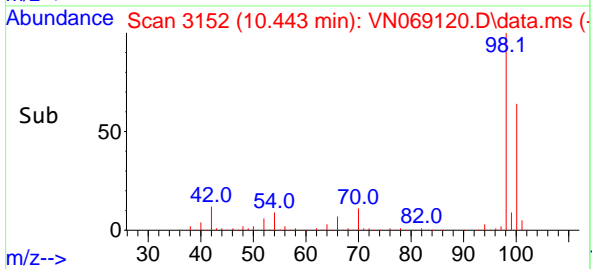
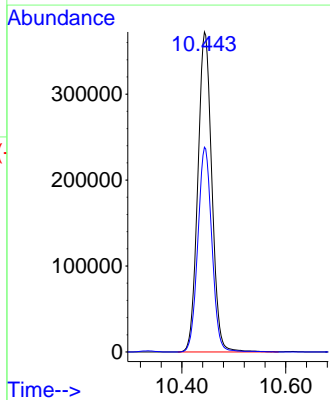
Manual Integrations
APPROVED
MMDadoda
10/22/2021 7:09:34 PM

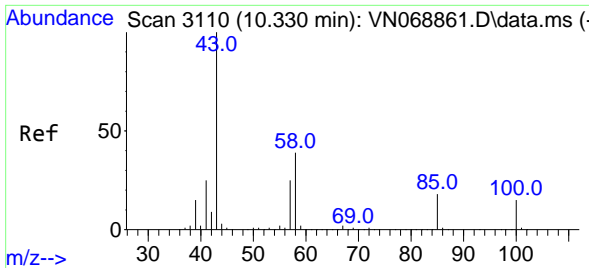


#50
Toluene-d8
Concen: 53.438 ug/l
RT: 10.443 min Scan# 3152
Delta R.T. 0.000 min
Lab File: VN069120.D
Acq: 22 Oct 2021 5:27



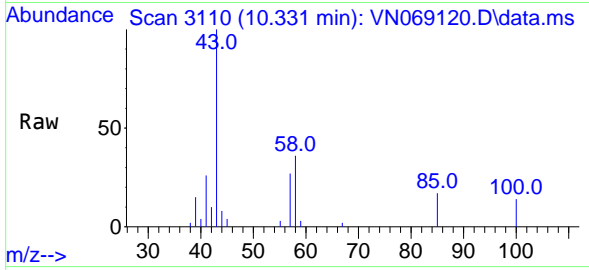
Tgt Ion: 98 Resp: 696202
Ion Ratio Lower Upper
98 100
100 64.0 51.5 77.3





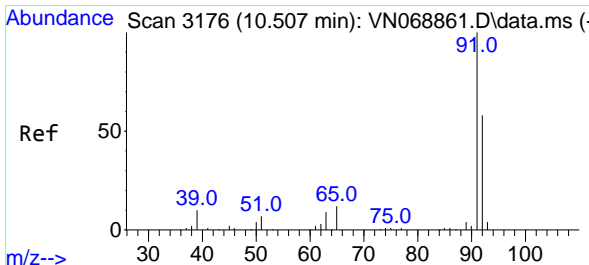
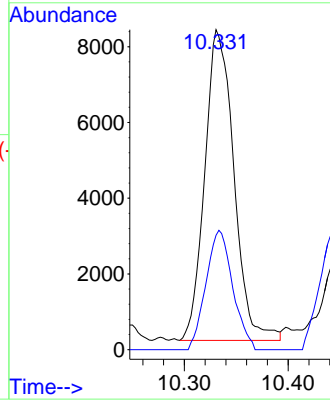
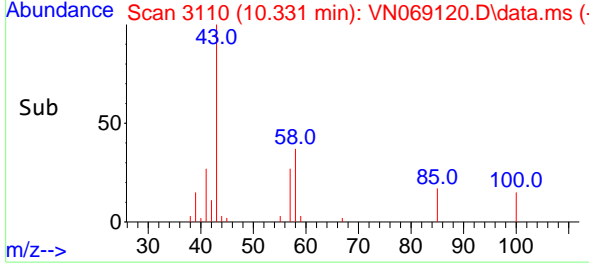
#51
 4-Methyl-2-Pentanone
 Concen: 3.166 ug/l
 RT: 10.331 min Scan# 3110
 Delta R.T. 0.000 min
 Lab File: VN069120.D
 Acq: 22 Oct 2021 5:27

Instrument : MSVOA_N
 ClientSampled : 20876

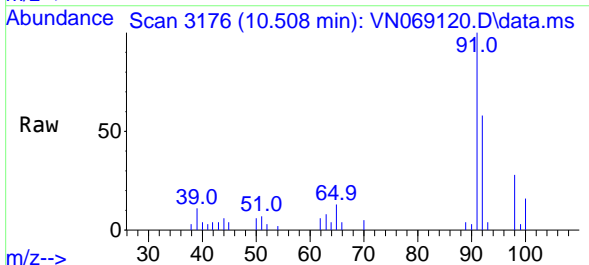


Tgt Ion: 43 Resp: 15989
 Ion Ratio Lower Upper
 43 100
 58 35.2 31.0 46.4

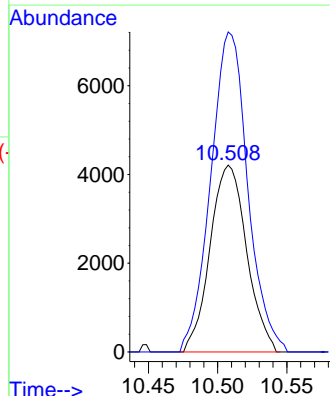
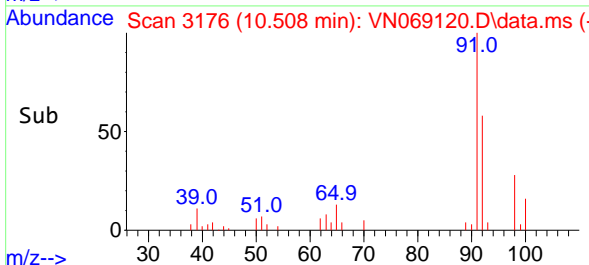
Manual Integrations
 APPROVED
 MMDadoda
 10/22/2021 7:09:34 PM

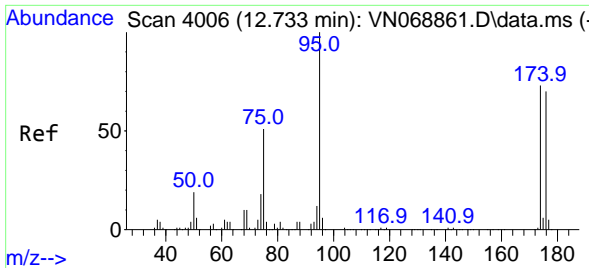


#52
 Toluene
 Concen: 0.826 ug/l
 RT: 10.508 min Scan# 3176
 Delta R.T. 0.000 min
 Lab File: VN069120.D
 Acq: 22 Oct 2021 5:27



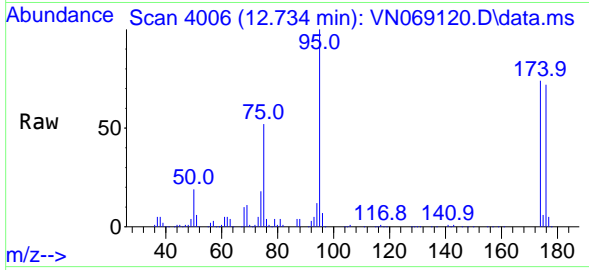
Tgt Ion: 92 Resp: 7740
 Ion Ratio Lower Upper
 92 100
 91 173.4 138.5 207.7





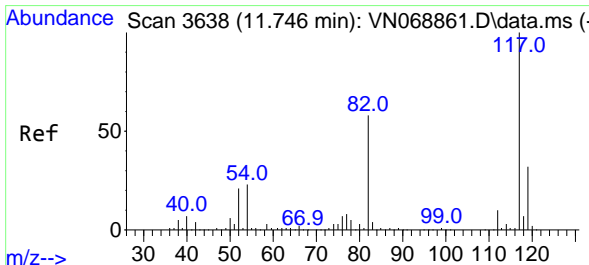
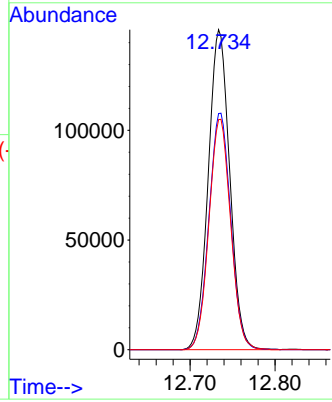
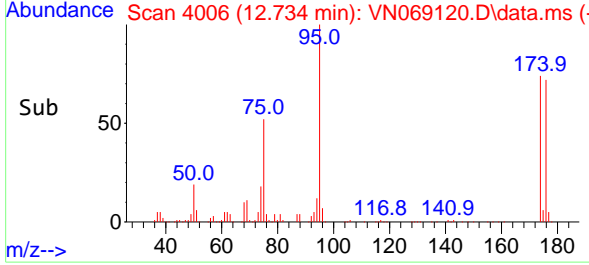
#62
 4-Bromofluorobenzene
 Concen: 52.066 ug/l
 RT: 12.734 min Scan# 4006
 Delta R.T. 0.000 min
 Lab File: VN069120.D
 Acq: 22 Oct 2021 5:27

Instrument :
 MSVOA_N
ClientSampled :
 20876

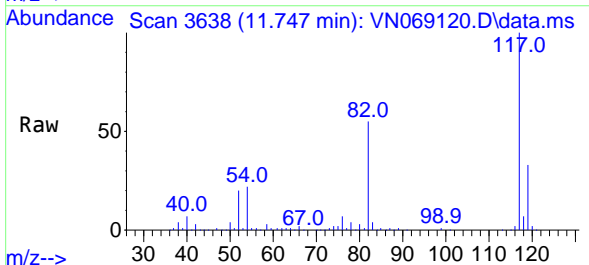


Tgt Ion: 95 Resp: 255924
 Ion Ratio Lower Upper
 95 100
 174 75.4 0.0 144.8
 176 72.8 0.0 140.0

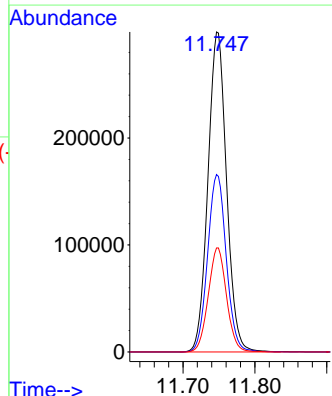
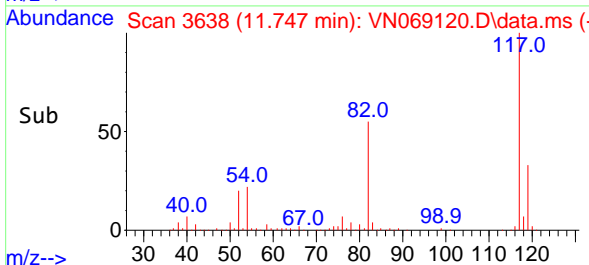
Manual Integrations
APPROVED
 MMDadoda
 10/22/2021 7:09:34 PM

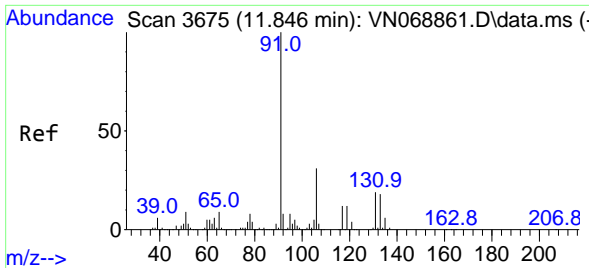


#63
 Chlorobenzene-d5
 Concen: 50.000 ug/l
 RT: 11.747 min Scan# 3638
 Delta R.T. 0.000 min
 Lab File: VN069120.D
 Acq: 22 Oct 2021 5:27



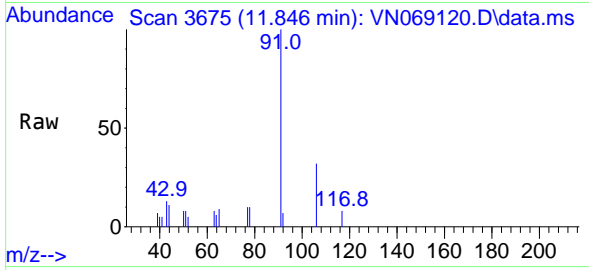
Tgt Ion: 117 Resp: 537922
 Ion Ratio Lower Upper
 117 100
 82 55.4 46.4 69.6
 119 32.5 26.0 39.0





#67
Ethyl Benzene
Concen: 0.302 ug/l
RT: 11.846 min Scan# 3675
Delta R.T. 0.000 min
Lab File: VN069120.D
Acq: 22 Oct 2021 5:27

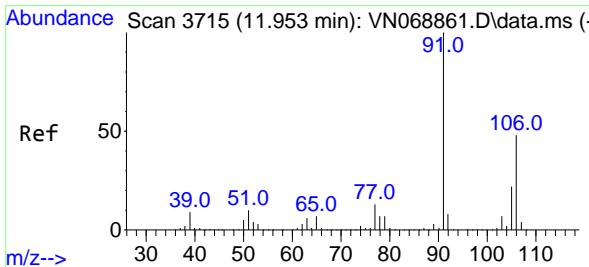
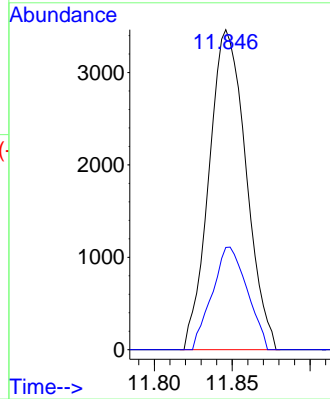
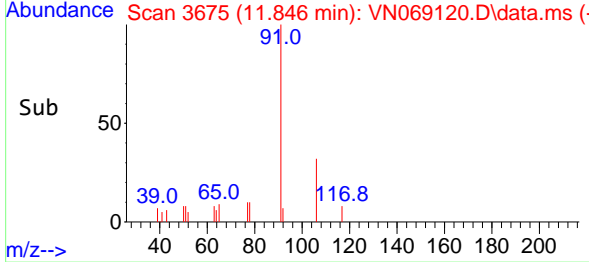
Instrument :
MSVOA_N
ClientSampled :
20876



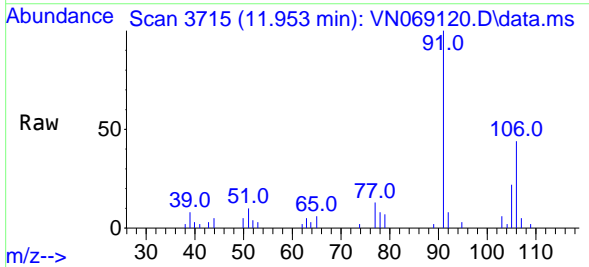
Tgt Ion: 91 Resp: 5719
Ion Ratio Lower Upper
91 100
106 31.9 24.8 37.2

Manual Integrations
APPROVED

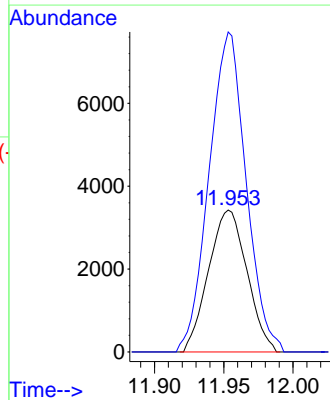
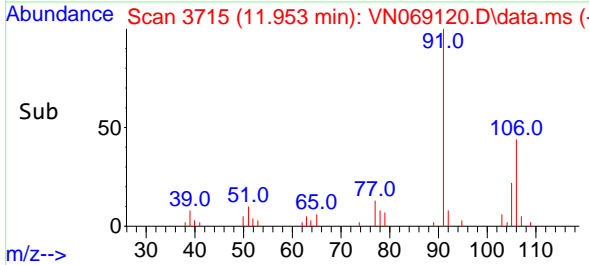
MMDadoda
10/22/2021 7:09:34 PM

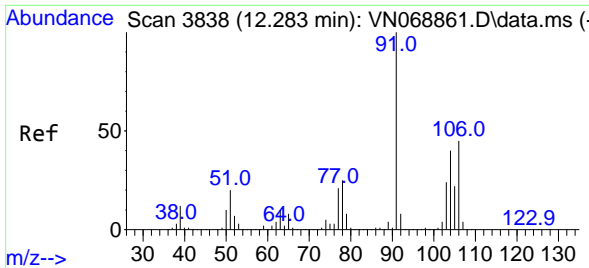


#68
m/p-Xylenes
Concen: 0.923 ug/l
RT: 11.953 min Scan# 3715
Delta R.T. 0.000 min
Lab File: VN069120.D
Acq: 22 Oct 2021 5:27



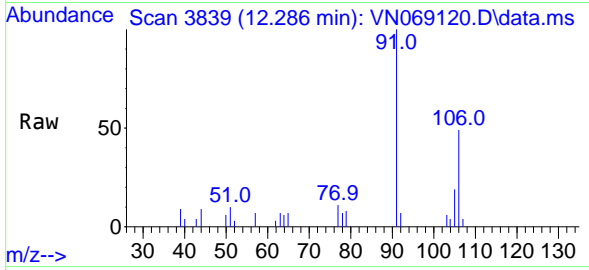
Tgt Ion: 106 Resp: 6615
Ion Ratio Lower Upper
106 100
91 216.8 166.8 250.2





#69
o-Xylene
Concen: 0.579 ug/l
RT: 12.286 min Scan# 3839
Delta R.T. 0.003 min
Lab File: VN069120.D
Acq: 22 Oct 2021 5:27

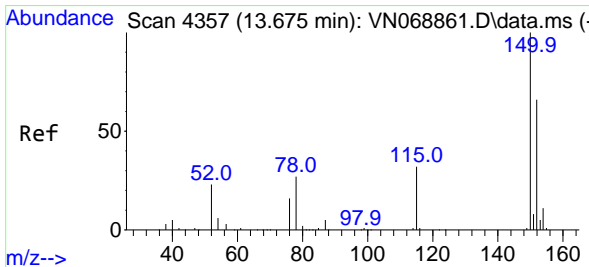
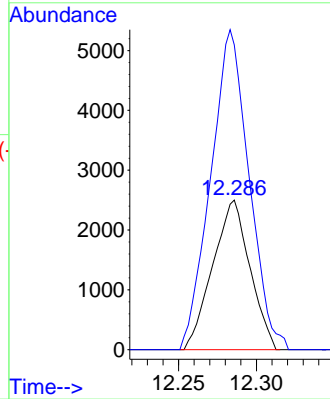
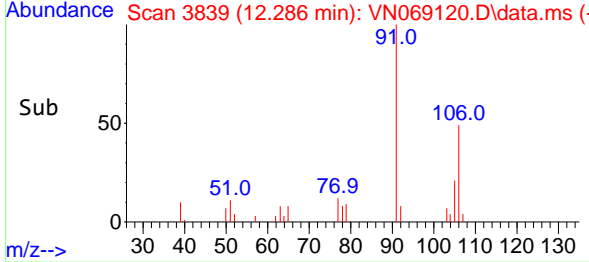
Instrument :
MSVOA_N
ClientSampled :
20876



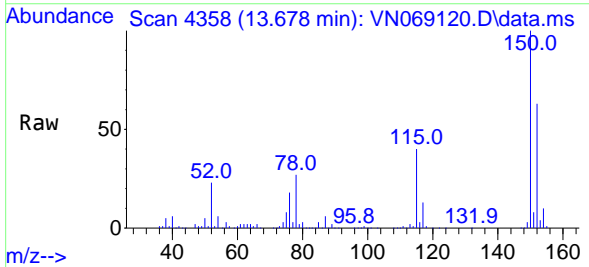
Tgt Ion:106 Resp: 4153
Ion Ratio Lower Upper
106 100
91 220.4 109.6 328.6

Manual Integrations
APPROVED

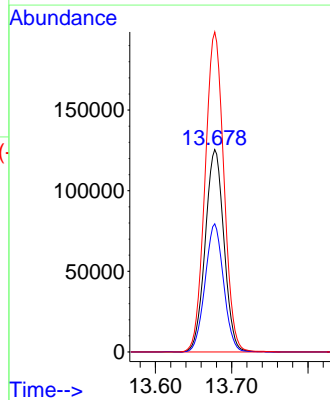
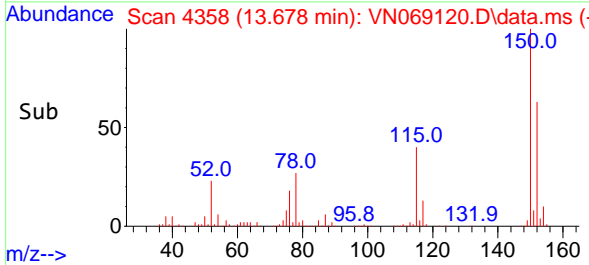
MMDadoda
10/22/2021 7:09:34 PM

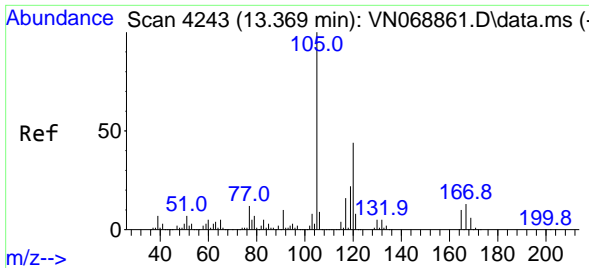


#72
1,4-Dichlorobenzene-d4
Concen: 50.000 ug/l
RT: 13.678 min Scan# 4358
Delta R.T. 0.003 min
Lab File: VN069120.D
Acq: 22 Oct 2021 5:27



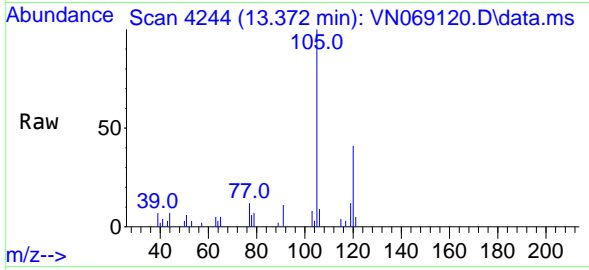
Tgt Ion:152 Resp: 214154
Ion Ratio Lower Upper
152 100
115 62.5 31.4 94.3
150 158.6 0.0 351.0





#84
 1,2,4-Trimethylbenzene
 Concen: 0.827 ug/l
 RT: 13.372 min Scan# 4244
 Delta R.T. 0.003 min
 Lab File: VN069120.D
 Acq: 22 Oct 2021 5:27

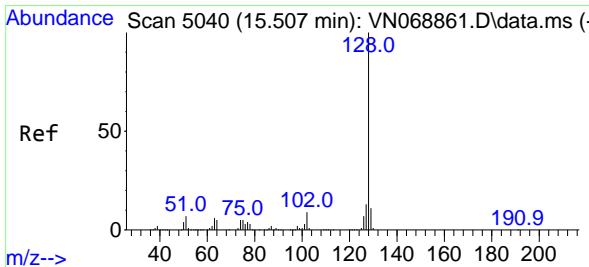
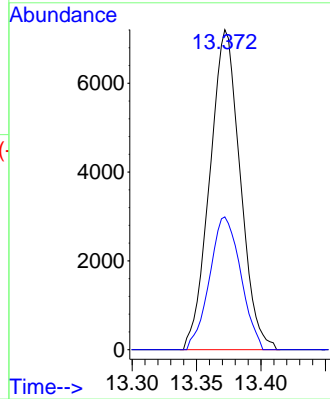
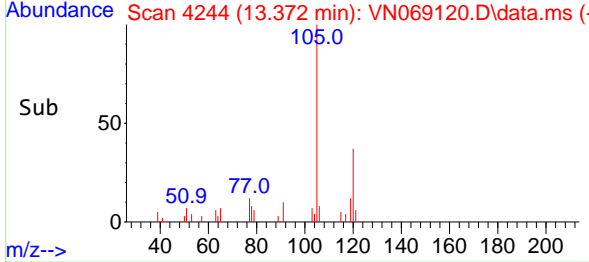
Instrument :
 MSVOA_N
 ClientSampled :
 20876



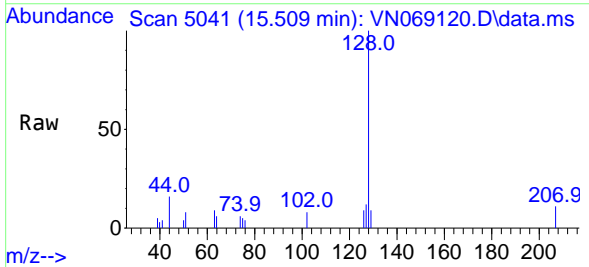
Tgt Ion:105 Resp: 11831
 Ion Ratio Lower Upper
 105 100
 120 42.5 21.9 65.5

Manual Integrations
 APPROVED

MMDadoda
 10/22/2021 7:09:34 PM



#95
 Naphthalene
 Concen: 4.590 ug/l
 RT: 15.509 min Scan# 5041
 Delta R.T. 0.002 min
 Lab File: VN069120.D
 Acq: 22 Oct 2021 5:27



Tgt Ion:128 Resp: 8369
 Ion Ratio Lower Upper
 128 100
 127 12.2 10.5 15.7
 129 4.4 8.9 13.3#

