

Data Path : Z:\voasrv\HPCHEM1\MSVOA_N\Data\VN102121\
 Data File : VN069079.D
 Acq On : 21 Oct 2021 11:08
 Operator : JC/MD
 Sample : VN1021MBL01
 Misc : 5.00g/10mL/100uL/5.00mL/MSVOA_N/MEOH
 ALS Vial : 3 Sample Multiplier: 1

Instrument :
 MSVOA_N
 ClientSampleId :

Quant Time: Oct 21 12:22:04 2021
 Quant Method : Z:\voasrv\HPCHEM1\MSVOA_N\methods\82N101221W.M
 Quant Title : SW846 8260
 QLast Update : Wed Oct 13 05:44:40 2021
 Response via : Initial Calibration

Compound	R.T.	QIon	Response	Conc	Units	Dev(Min)

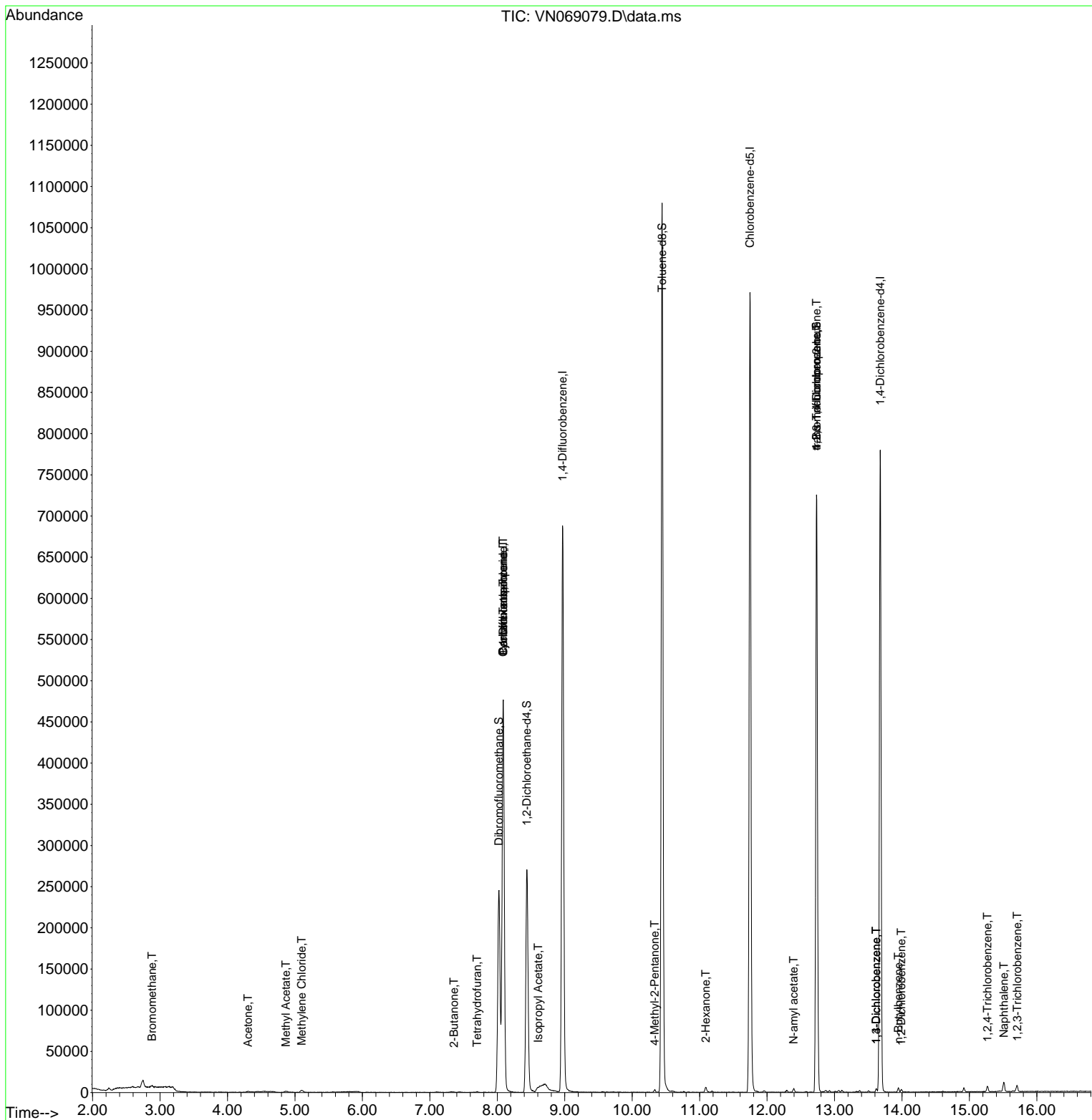
Internal Standards						
1) Pentafluorobenzene	8.088	168	353048	50.000	ug/l	0.00
34) 1,4-Difluorobenzene	8.968	114	615650	50.000	ug/l	0.00
63) Chlorobenzene-d5	11.747	117	576531	50.000	ug/l	0.00
72) 1,4-Dichlorobenzene-d4	13.678	152	207648	50.000	ug/l	0.00
System Monitoring Compounds						
33) 1,2-Dichloroethane-d4	8.437	65	233053	50.067	ug/l	0.00
Spiked Amount	50.000	Range 61 - 141	Recovery	=	100.140%	
35) Dibromofluoromethane	8.024	113	182908	51.064	ug/l	0.00
Spiked Amount	50.000	Range 69 - 133	Recovery	=	102.120%	
50) Toluene-d8	10.443	98	767653	53.563	ug/l	0.00
Spiked Amount	50.000	Range 65 - 126	Recovery	=	107.120%	
62) 4-Bromofluorobenzene	12.734	95	264724	48.958	ug/l	0.00
Spiked Amount	50.000	Range 58 - 135	Recovery	=	97.920%	
Target Compounds						
						Qvalue
5) Bromomethane	2.880	94	1194	0.495	ug/l	93
16) Acetone	4.301	43	1945	1.120	ug/l #	44
18) Methyl Acetate	4.867	43	3070	0.466	ug/l #	62
20) Methylene Chloride	5.101	84	2224	0.556	ug/l	88
25) 2-Butanone	7.356	43	773	0.294	ug/l #	48
29) Tetrahydrofuran	7.700	42	383	0.225	ug/l #	50
31) Cyclohexane	8.086	56	8139	1.125	ug/l #	8
36) 1,1-Dichloropropene	8.088	75	29376	5.586	ug/l #	50
38) Carbon Tetrachloride	8.088	117	37099	6.424	ug/l #	15
43) Isopropyl Acetate	8.609	43	5216	0.544	ug/l #	55
51) 4-Methyl-2-Pentanone	10.333	43	2404	0.433	ug/l #	83
59) 2-Hexanone	11.090	43	5278	1.325	ug/l	87
74) N-amyl acetate	12.393	43	3025	0.462	ug/l #	93
76) 1,2,3-Trichloropropane	12.734	75	140755	31.858	ug/l #	1
81) trans-1,4-Dichloro-2-b...	12.734	75	140755	76.219	ug/l #	12
87) 1,3-Dichlorobenzene	13.619	146	1449	0.219	ug/l	88
88) 1,4-Dichlorobenzene	13.619	146	1449	0.221	ug/l	88
89) n-Butylbenzene	13.948	91	3796	0.328	ug/l	93
91) 1,2-Dichlorobenzene	13.989	146	1722	0.268	ug/l	95
93) 1,2,4-Trichlorobenzene	15.268	180	2754	3.350	ug/l	99
95) Naphthalene	15.512	128	11734	4.937	ug/l #	97
96) 1,2,3-Trichlorobenzene	15.708	180	3536	3.526	ug/l	88

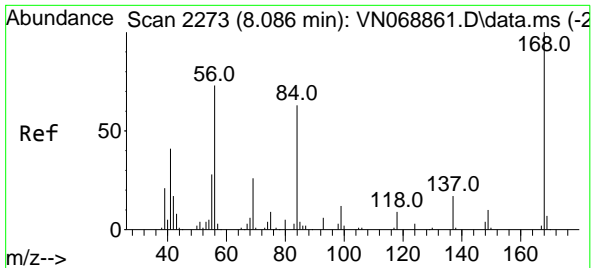
(#) = qualifier out of range (m) = manual integration (+) = signals summed

Data Path : Z:\voasrv\HPCHEM1\MSVOA_N\Data\VN102121\
 Data File : VN069079.D
 Acq On : 21 Oct 2021 11:08
 Operator : JC/MD
 Sample : VN1021MBL01
 Misc : 5.00g/10mL/100uL/5.00mL/MSVOA_N/MEOH
 ALS Vial : 3 Sample Multiplier: 1

Instrument :
 MSVOA_N
 ClientSampleId :

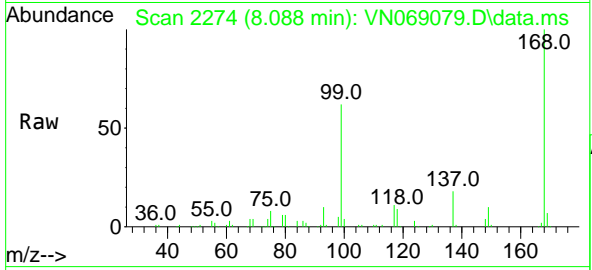
Quant Time: Oct 21 12:22:04 2021
 Quant Method : Z:\voasrv\HPCHEM1\MSVOA_N\methods\82N101221W.M
 Quant Title : SW846 8260
 QLast Update : Wed Oct 13 05:44:40 2021
 Response via : Initial Calibration



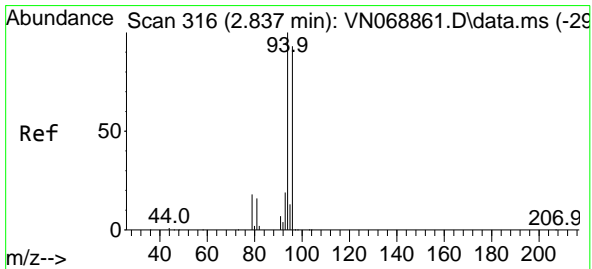
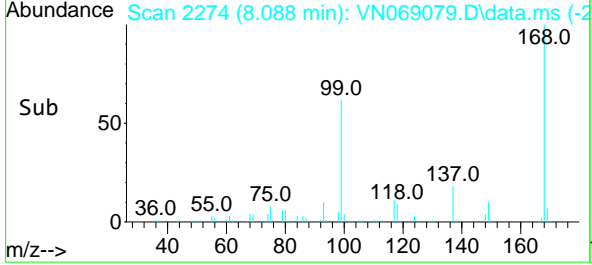
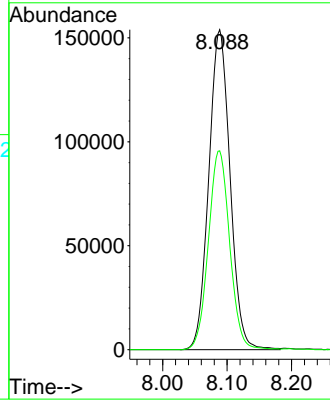


#1
 Pentafluorobenzene
 Concen: 50.000 ug/l
 RT: 8.088 min Scan# 21
 Delta R.T. 0.002 min
 Lab File: VN069079.D
 Acq: 21 Oct 2021 11:08

Instrument :
 MSVOA_N
 ClientSampleId :

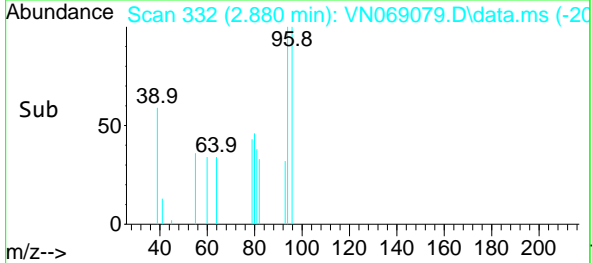
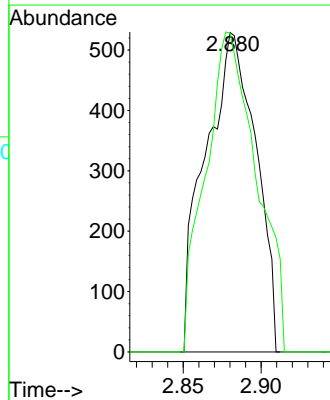
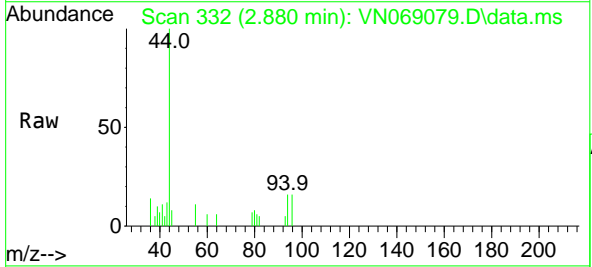


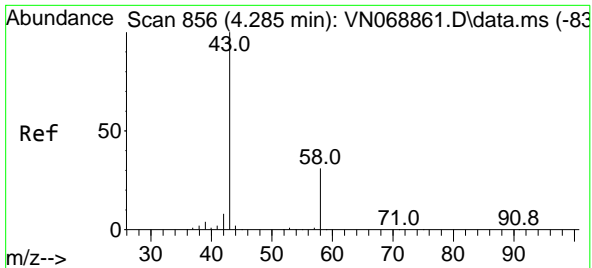
Tgt Ion:168 Resp: 353048
 Ion Ratio Lower Upper
 168 100
 99 62.1 48.9 73.3



#5
 Bromomethane
 Concen: 0.495 ug/l
 RT: 2.880 min Scan# 332
 Delta R.T. 0.043 min
 Lab File: VN069079.D
 Acq: 21 Oct 2021 11:08

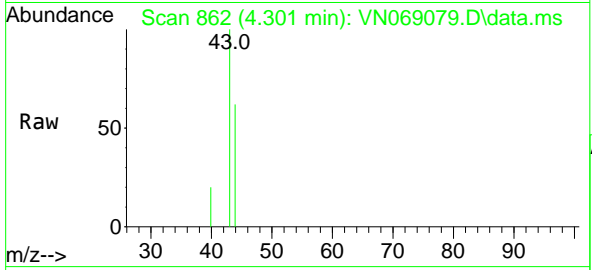
Tgt Ion: 94 Resp: 1194
 Ion Ratio Lower Upper
 94 100
 96 99.8 74.2 111.4



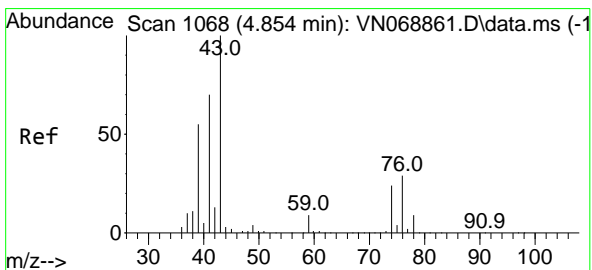
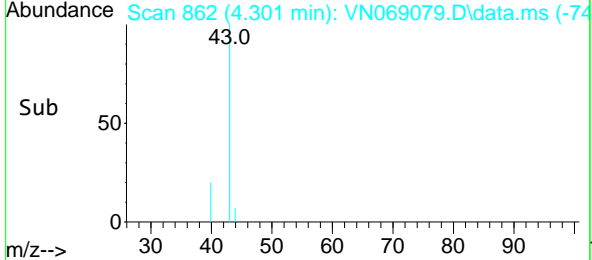
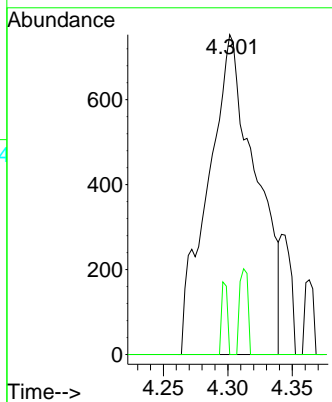


#16
 Acetone
 Concen: 1.120 ug/l
 RT: 4.301 min Scan# 80
 Delta R.T. 0.016 min
 Lab File: VN069079.D
 Acq: 21 Oct 2021 11:08

Instrument :
 MSVOA_N
 ClientSampleId :

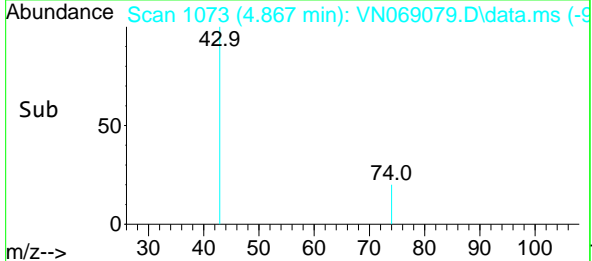
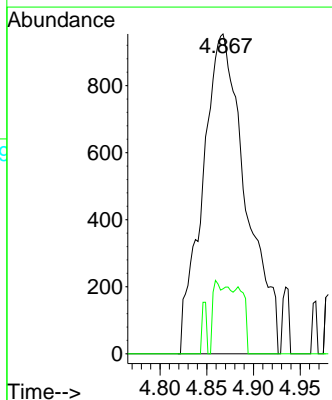
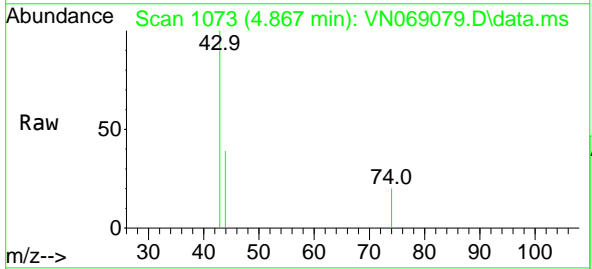


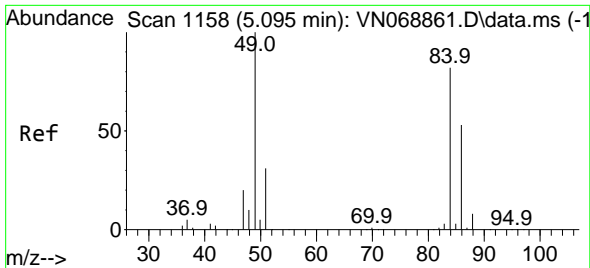
Tgt Ion: 43 Resp: 1945
 Ion Ratio Lower Upper
 43 100
 58 0.0 24.5 36.7#



#18
 Methyl Acetate
 Concen: 0.466 ug/l
 RT: 4.867 min Scan# 1073
 Delta R.T. 0.014 min
 Lab File: VN069079.D
 Acq: 21 Oct 2021 11:08

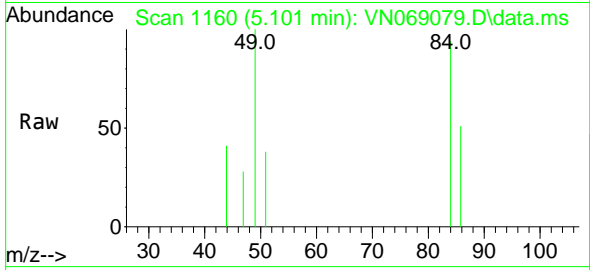
Tgt Ion: 43 Resp: 3070
 Ion Ratio Lower Upper
 43 100
 74 5.2 18.9 28.3#





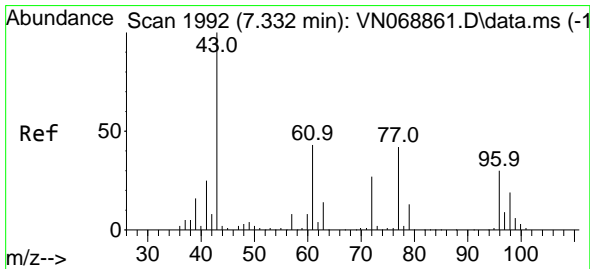
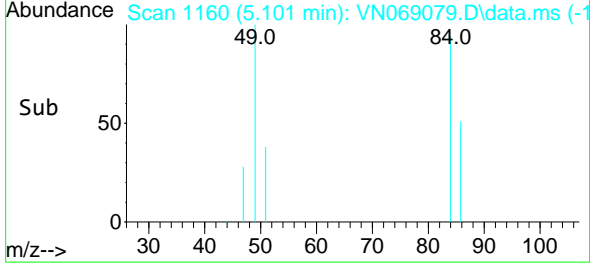
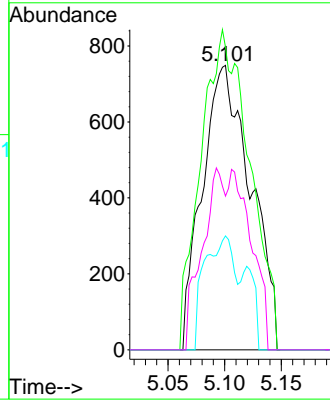
#20
 Methylene Chloride
 Concen: 0.556 ug/l
 RT: 5.101 min Scan# 1158
 Delta R.T. 0.005 min
 Lab File: VN069079.D
 Acq: 21 Oct 2021 11:08

Instrument :
 MSVOA_N
 ClientSampleId :



Tgt Ion: 84 Resp: 2224

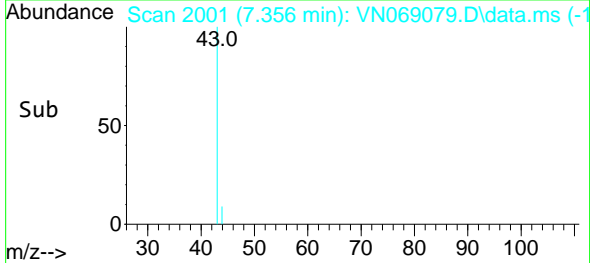
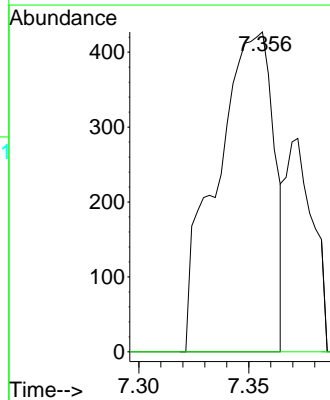
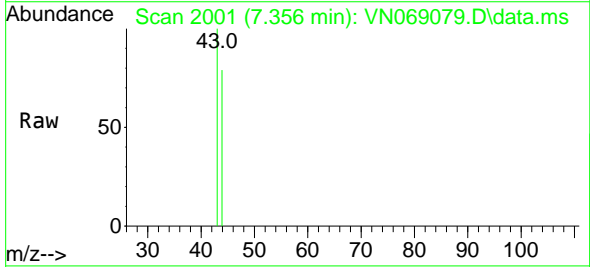
Ion	Ratio	Lower	Upper
84	100		
49	106.4	97.6	146.4
51	40.1	30.3	45.5
86	54.1	51.8	77.6

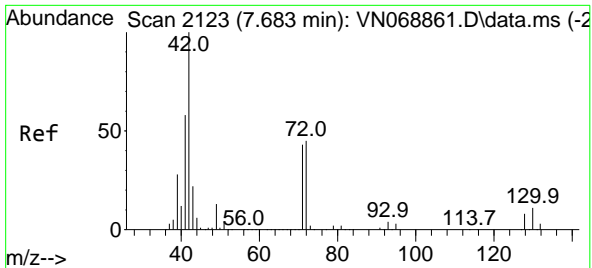


#25
 2-Butanone
 Concen: 0.294 ug/l
 RT: 7.356 min Scan# 2001
 Delta R.T. 0.024 min
 Lab File: VN069079.D
 Acq: 21 Oct 2021 11:08

Tgt Ion: 43 Resp: 773

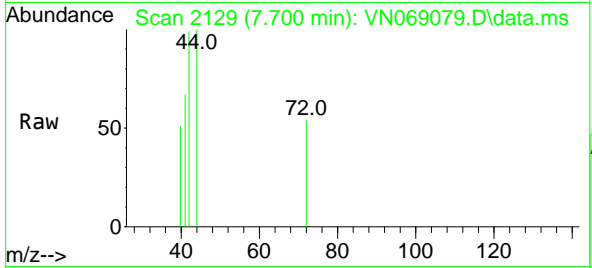
Ion	Ratio	Lower	Upper
43	100		
72	0.0	21.2	31.8#





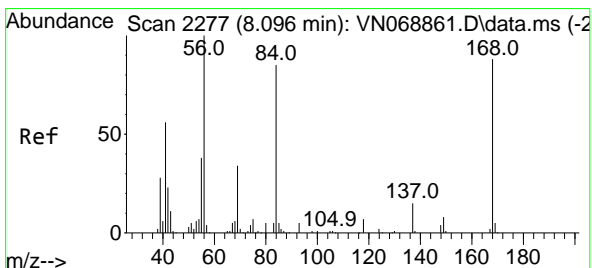
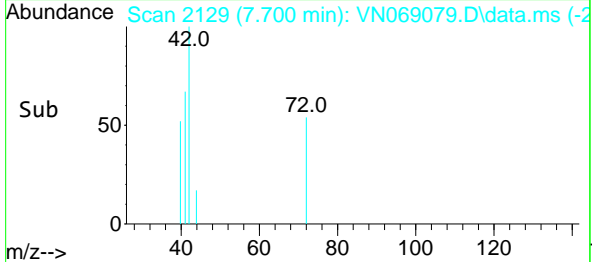
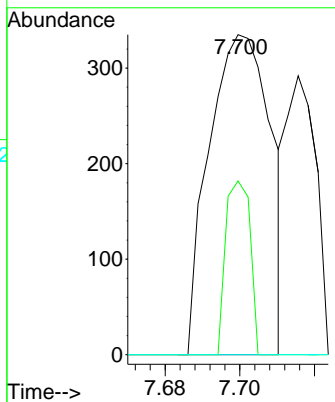
#29
 Tetrahydrofuran
 Concen: 0.225 ug/l
 RT: 7.700 min Scan# 2123
 Delta R.T. 0.016 min
 Lab File: VN069079.D
 Acq: 21 Oct 2021 11:08

Instrument :
 MSVOA_N
 ClientSampleId :



Tgt Ion: 42 Resp: 383

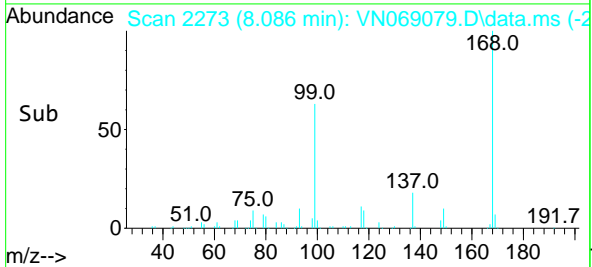
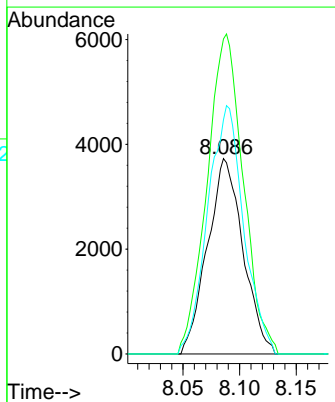
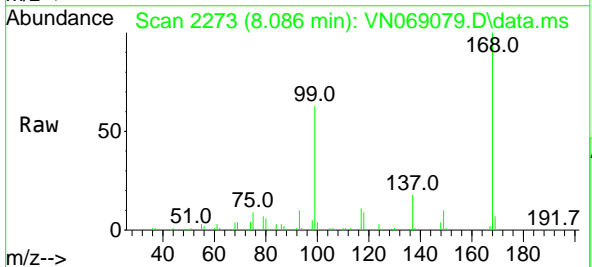
Ion	Ratio	Lower	Upper
42	100		
72	21.7	35.4	53.2#
71	0.0	33.8	50.6#

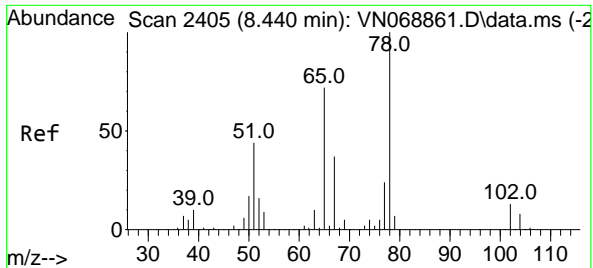


#31
 Cyclohexane
 Concen: 1.125 ug/l
 RT: 8.086 min Scan# 2273
 Delta R.T. -0.010 min
 Lab File: VN069079.D
 Acq: 21 Oct 2021 11:08

Tgt Ion: 56 Resp: 8139

Ion	Ratio	Lower	Upper
56	100		
69	161.2	26.9	40.3#
84	119.9	67.6	101.4#

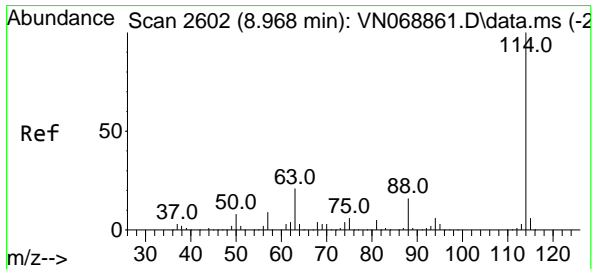
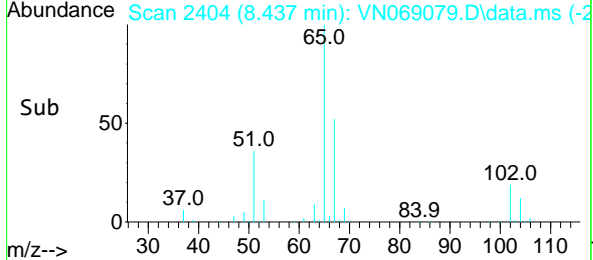
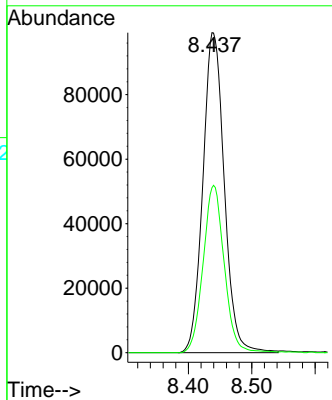
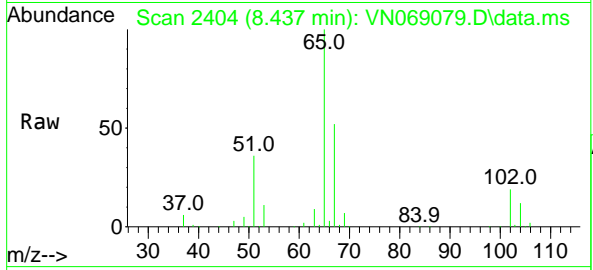




#33
 1,2-Dichloroethane-d4
 Concen: 50.067 ug/l
 RT: 8.437 min Scan# 2404
 Delta R.T. -0.003 min
 Lab File: VN069079.D
 Acq: 21 Oct 2021 11:08

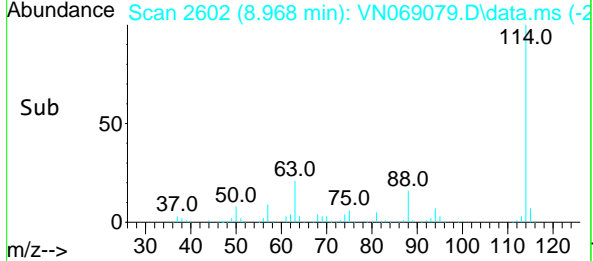
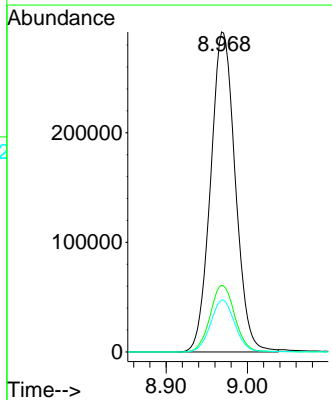
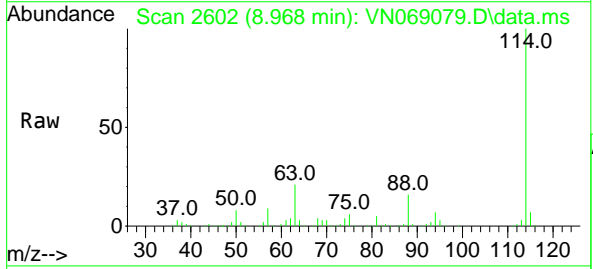
Instrument : MSVOA_N
 ClientSampleId :

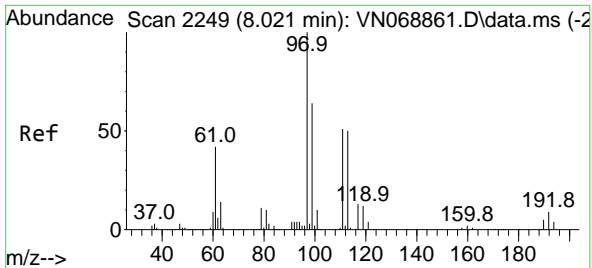
Tgt Ion: 65 Resp: 233053
 Ion Ratio Lower Upper
 65 100
 67 51.5 0.0 103.8



#34
 1,4-Difluorobenzene
 Concen: 50.000 ug/l
 RT: 8.968 min Scan# 2602
 Delta R.T. 0.000 min
 Lab File: VN069079.D
 Acq: 21 Oct 2021 11:08

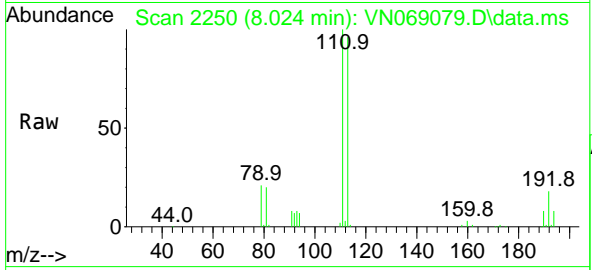
Tgt Ion:114 Resp: 615650
 Ion Ratio Lower Upper
 114 100
 63 20.9 0.0 42.6
 88 16.2 0.0 32.0



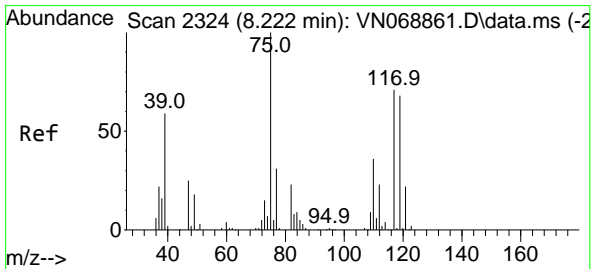
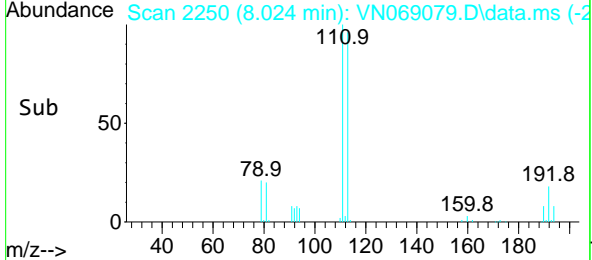
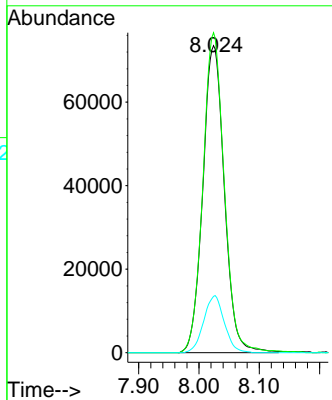


#35
 Dibromofluoromethane
 Concen: 51.064 ug/l
 RT: 8.024 min Scan# 21
 Delta R.T. 0.003 min
 Lab File: VN069079.D
 Acq: 21 Oct 2021 11:08

Instrument :
 MSVOA_N
 ClientSampleId :

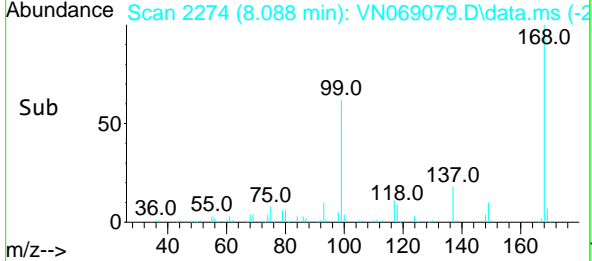
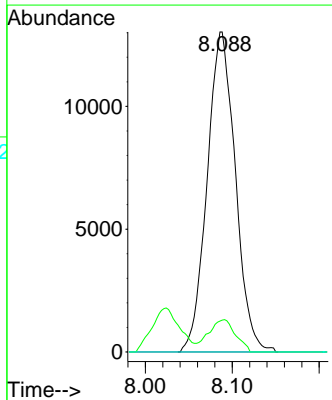
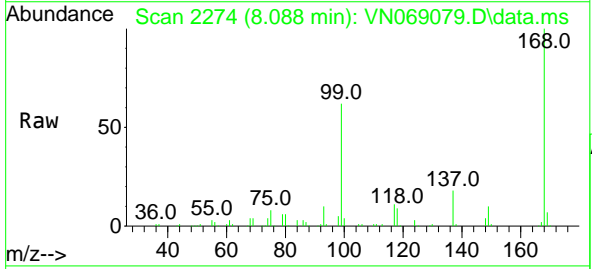


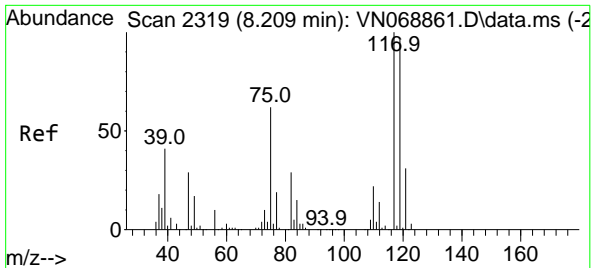
Tgt Ion:113 Resp: 182908
 Ion Ratio Lower Upper
 113 100
 111 102.6 83.2 124.8
 192 17.8 15.0 22.4



#36
 1,1-Dichloropropene
 Concen: 5.586 ug/l
 RT: 8.088 min Scan# 2274
 Delta R.T. -0.134 min
 Lab File: VN069079.D
 Acq: 21 Oct 2021 11:08

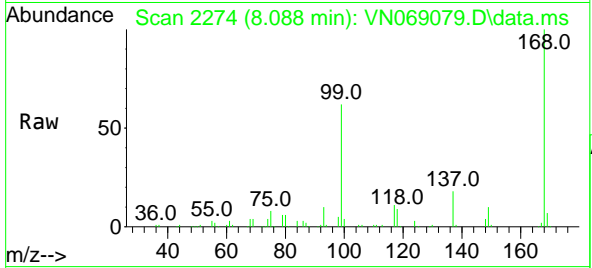
Tgt Ion: 75 Resp: 29376
 Ion Ratio Lower Upper
 75 100
 110 9.6 17.9 53.8#
 77 0.0 24.7 37.1#



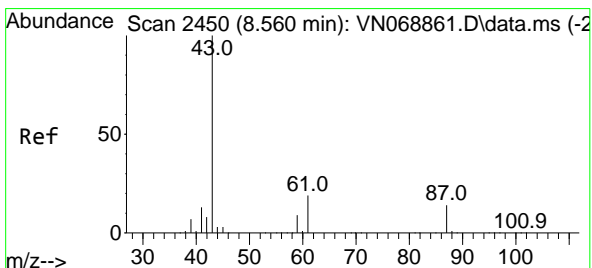
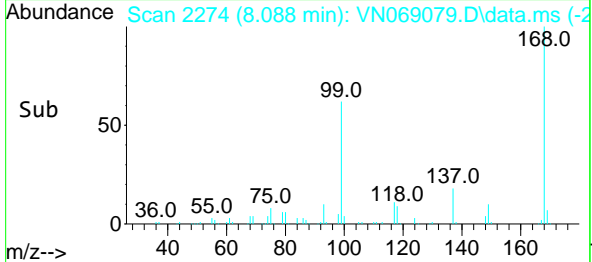
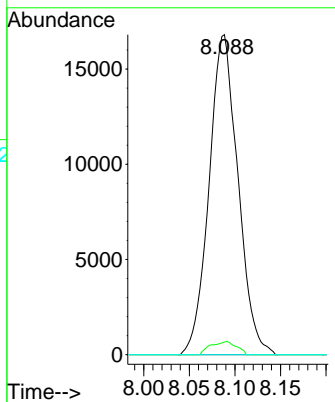


#38
 Carbon Tetrachloride
 Concen: 6.424 ug/l
 RT: 8.088 min Scan# 21
 Delta R.T. -0.121 min
 Lab File: VN069079.D
 Acq: 21 Oct 2021 11:08

Instrument :
 MSVOA_N
 ClientSampleId :

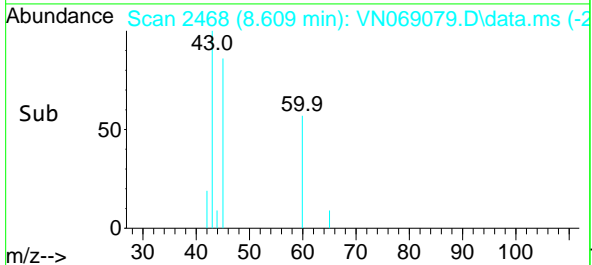
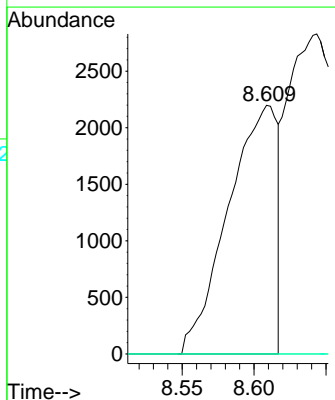
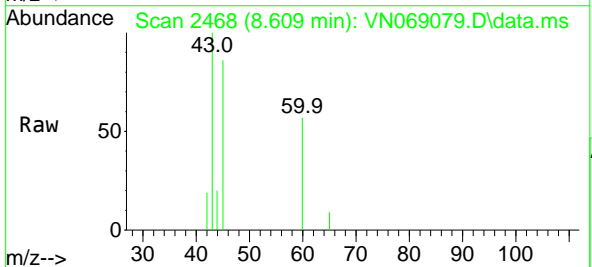


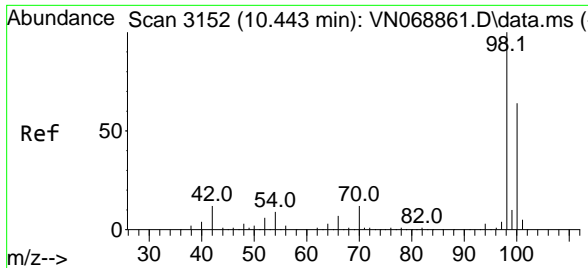
Tgt Ion:117 Resp: 37099
 Ion Ratio Lower Upper
 117 100
 119 4.0 76.9 115.3#
 121 0.0 24.6 37.0#



#43
 Isopropyl Acetate
 Concen: 0.544 ug/l
 RT: 8.609 min Scan# 2468
 Delta R.T. 0.048 min
 Lab File: VN069079.D
 Acq: 21 Oct 2021 11:08

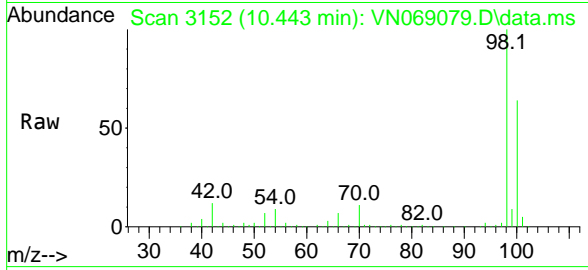
Tgt Ion: 43 Resp: 5216
 Ion Ratio Lower Upper
 43 100
 61 0.0 20.4 30.6#
 87 0.0 10.7 16.1#



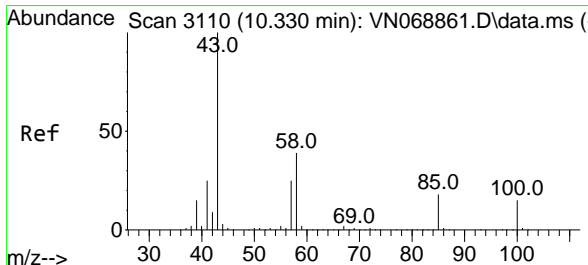
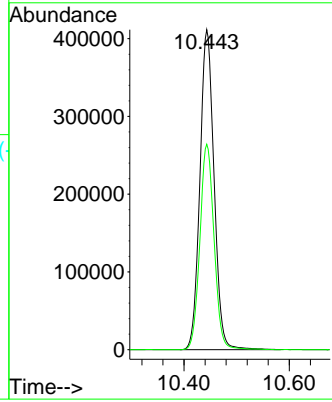
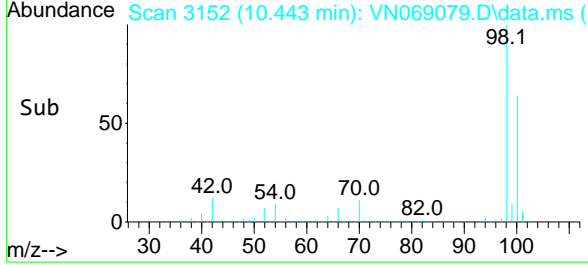


#50
 Toluene-d8
 Concen: 53.563 ug/l
 RT: 10.443 min Scan# 3152
 Delta R.T. 0.000 min
 Lab File: VN069079.D
 Acq: 21 Oct 2021 11:08

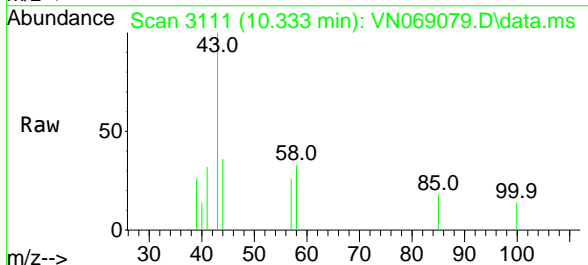
Instrument : MSVOA_N
 ClientSampleId :



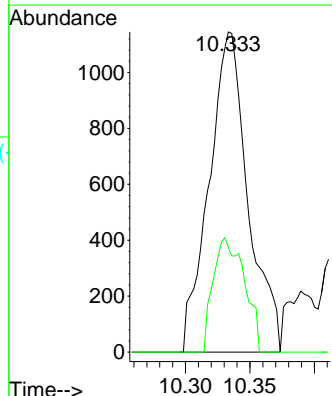
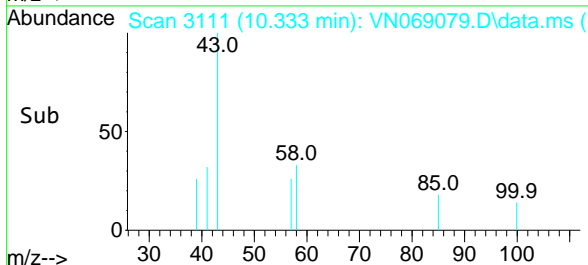
Tgt Ion: 98 Resp: 767653
 Ion Ratio Lower Upper
 98 100
 100 64.3 51.5 77.3

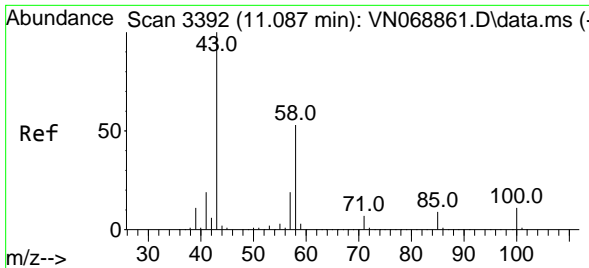


#51
 4-Methyl-2-Pentanone
 Concen: 0.433 ug/l
 RT: 10.333 min Scan# 3111
 Delta R.T. 0.003 min
 Lab File: VN069079.D
 Acq: 21 Oct 2021 11:08



Tgt Ion: 43 Resp: 2404
 Ion Ratio Lower Upper
 43 100
 58 28.6 31.0 46.4#

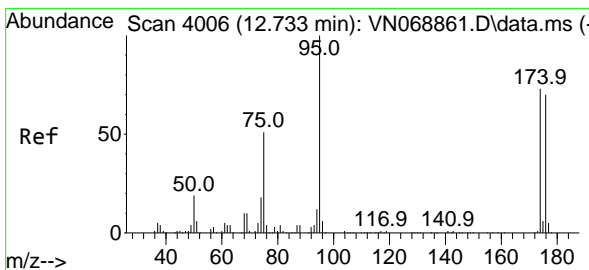
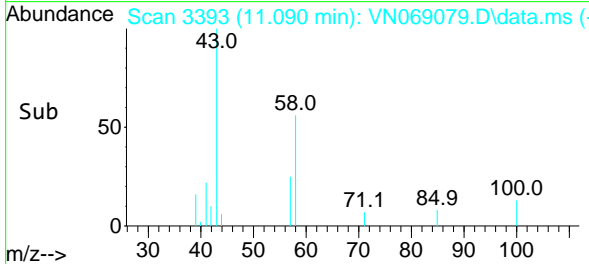
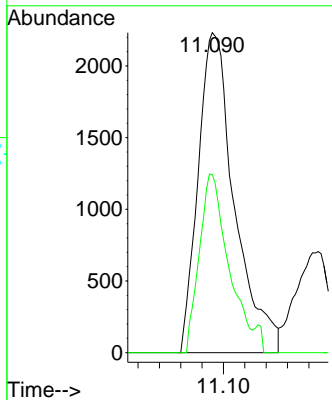
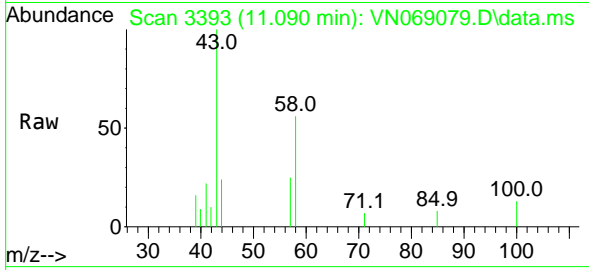




#59
 2-Hexanone
 Concen: 1.325 ug/l
 RT: 11.090 min Scan# 31
 Delta R.T. 0.003 min
 Lab File: VN069079.D
 Acq: 21 Oct 2021 11:08

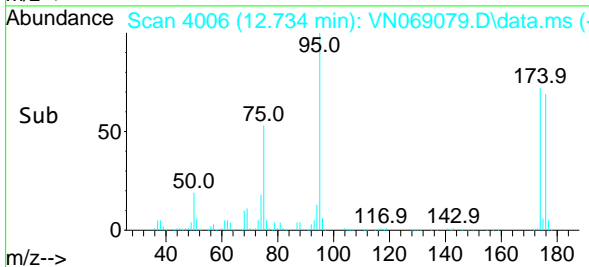
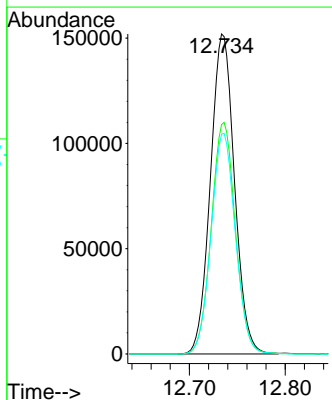
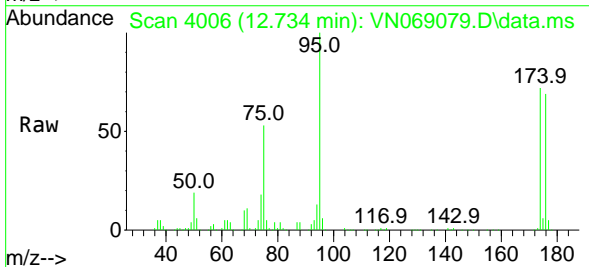
Instrument : MSVOA_N
 ClientSampleId :

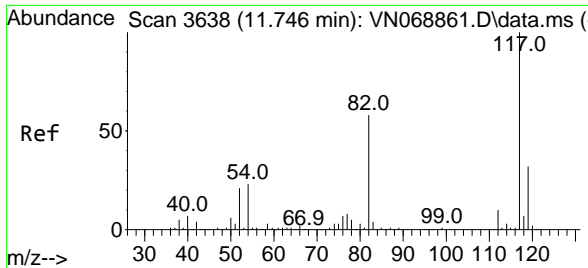
Tgt Ion: 43 Resp: 5278
 Ion Ratio Lower Upper
 43 100
 58 44.6 26.9 80.7



#62
 4-Bromofluorobenzene
 Concen: 48.958 ug/l
 RT: 12.734 min Scan# 4006
 Delta R.T. 0.000 min
 Lab File: VN069079.D
 Acq: 21 Oct 2021 11:08

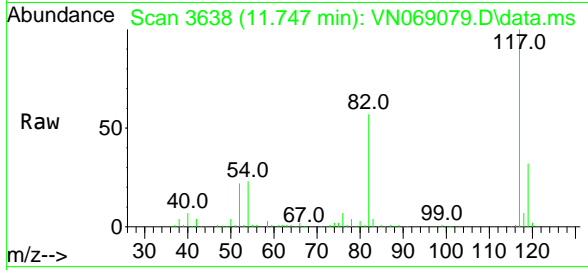
Tgt Ion: 95 Resp: 264724
 Ion Ratio Lower Upper
 95 100
 174 72.6 0.0 144.8
 176 69.7 0.0 140.0



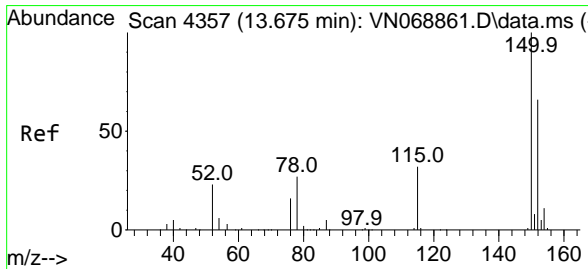
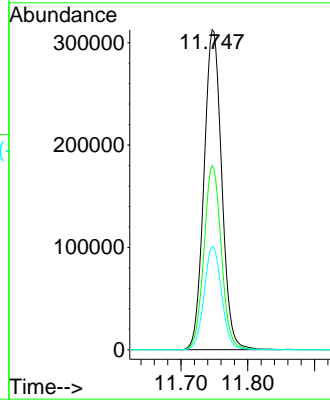
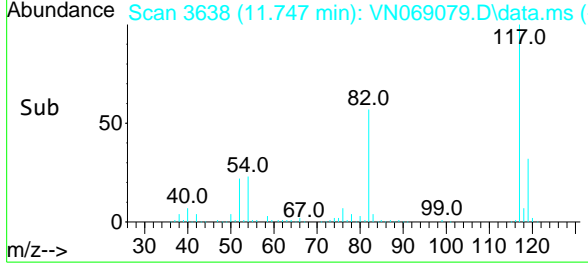


#63
 Chlorobenzene-d5
 Concen: 50.000 ug/l
 RT: 11.747 min Scan# 30
 Delta R.T. 0.000 min
 Lab File: VN069079.D
 Acq: 21 Oct 2021 11:08

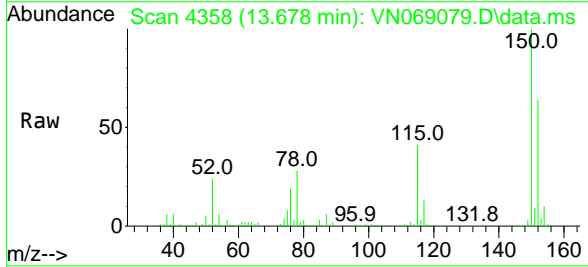
Instrument :
 MSVOA_N
 ClientSampleId :



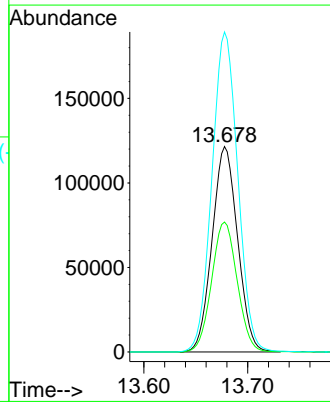
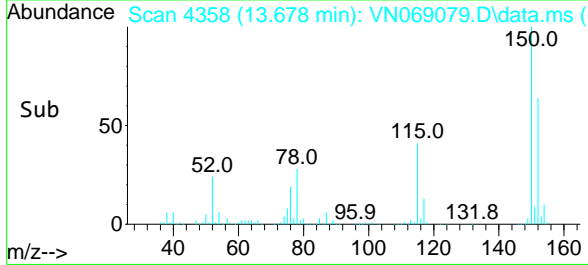
Tgt Ion:117 Resp: 576531
 Ion Ratio Lower Upper
 117 100
 82 57.5 46.4 69.6
 119 32.2 26.0 39.0

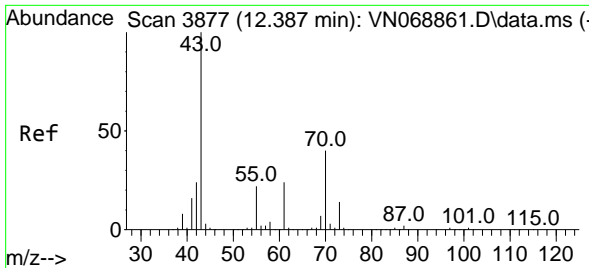


#72
 1,4-Dichlorobenzene-d4
 Concen: 50.000 ug/l
 RT: 13.678 min Scan# 4358
 Delta R.T. 0.003 min
 Lab File: VN069079.D
 Acq: 21 Oct 2021 11:08



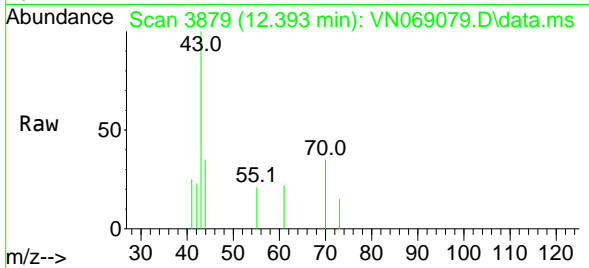
Tgt Ion:152 Resp: 207648
 Ion Ratio Lower Upper
 152 100
 115 63.4 31.4 94.3
 150 157.7 0.0 351.0





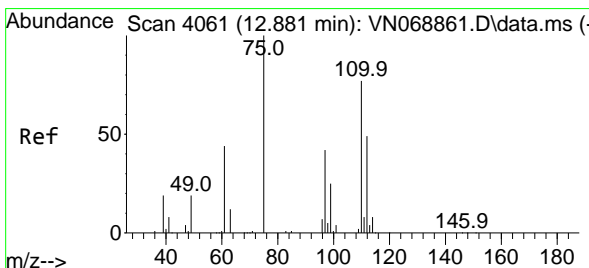
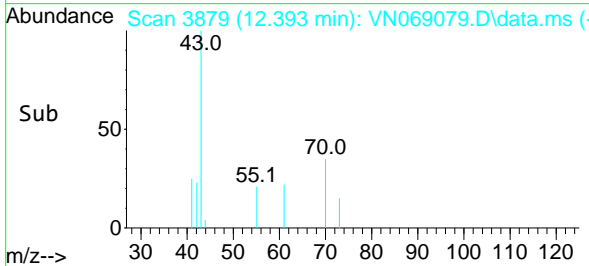
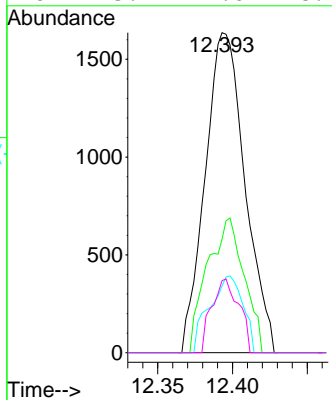
#74
 N-amy1 acetate
 Concen: 0.462 ug/l
 RT: 12.393 min Scan# 3879
 Delta R.T. 0.005 min
 Lab File: VN069079.D
 Acq: 21 Oct 2021 11:08

Instrument : MSVOA_N
 ClientSampleId :



Tgt Ion: 43 Resp: 3025

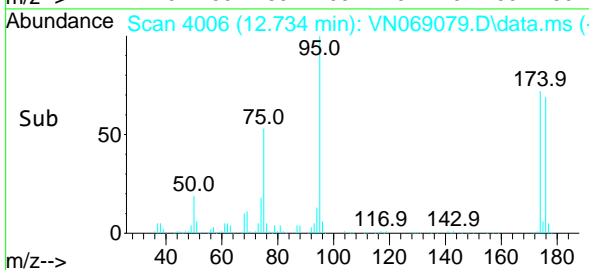
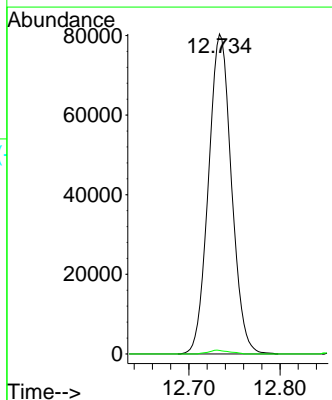
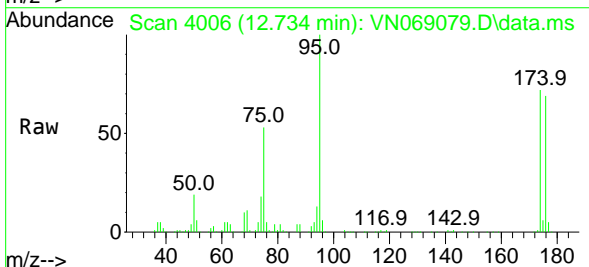
Ion	Ratio	Lower	Upper
43	100		
70	38.8	32.2	48.2
55	20.1	18.0	27.0
61	15.7	19.0	28.4

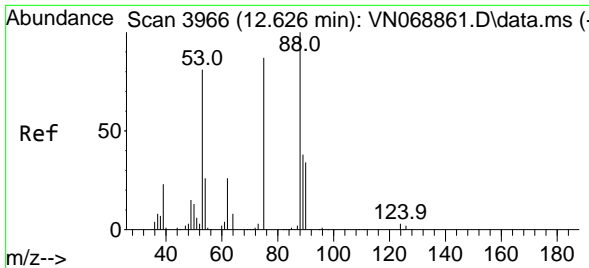


#76
 1,2,3-Trichloropropane
 Concen: 31.858 ug/l
 RT: 12.734 min Scan# 4006
 Delta R.T. -0.147 min
 Lab File: VN069079.D
 Acq: 21 Oct 2021 11:08

Tgt Ion: 75 Resp: 140755

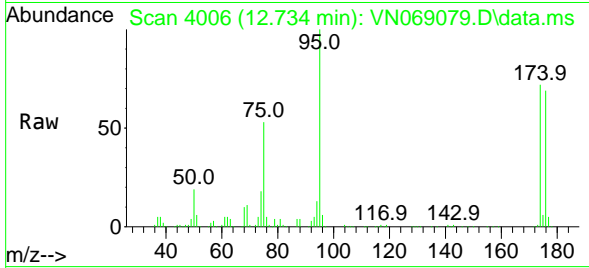
Ion	Ratio	Lower	Upper
75	100		
77	1.1	96.2	288.4



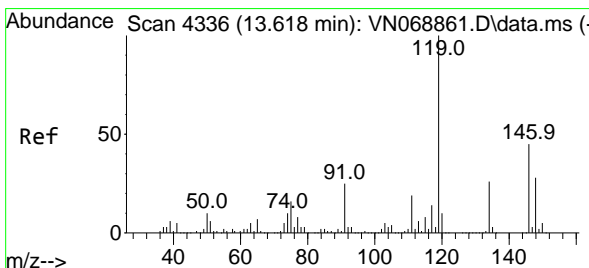
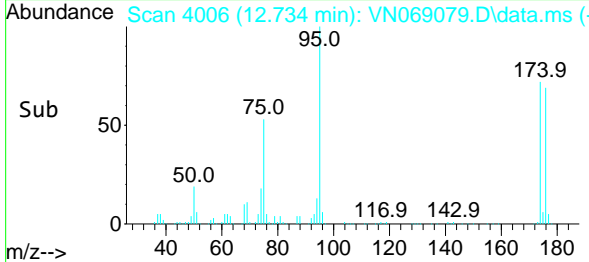
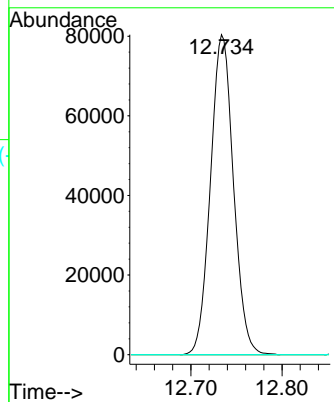


#81
 trans-1,4-Dichloro-2-butene
 Concen: 76.219 ug/l
 RT: 12.734 min Scan# 4006
 Delta R.T. 0.107 min
 Lab File: VN069079.D
 Acq: 21 Oct 2021 11:08

Instrument : MSVOA_N
 ClientSampleId :

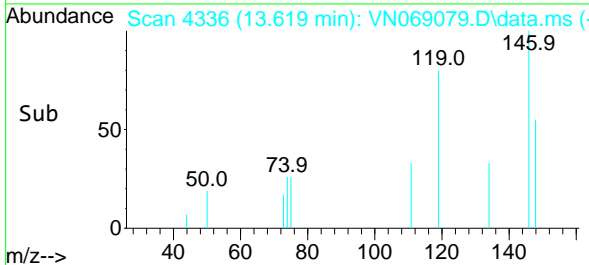
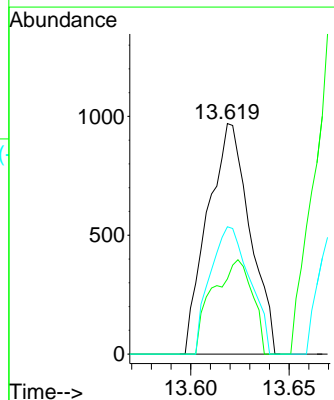
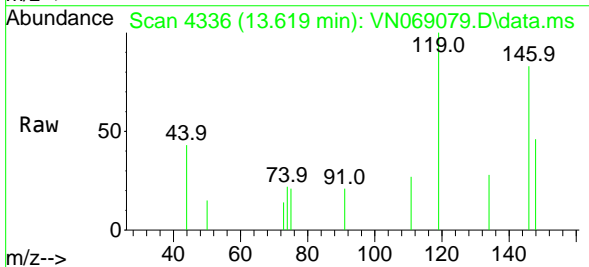


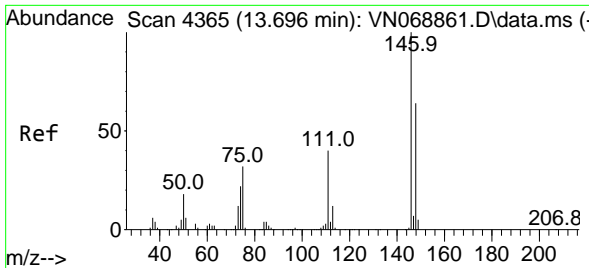
Tgt Ion: 75 Resp: 140755
 Ion Ratio Lower Upper
 75 100
 53 0.0 75.4 113.2#
 89 0.0 36.9 55.3#



#87
 1,3-Dichlorobenzene
 Concen: 0.219 ug/l
 RT: 13.619 min Scan# 4336
 Delta R.T. 0.000 min
 Lab File: VN069079.D
 Acq: 21 Oct 2021 11:08

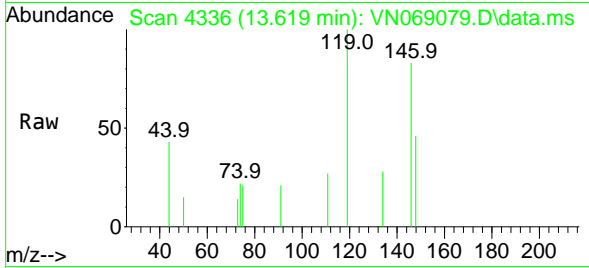
Tgt Ion: 146 Resp: 1449
 Ion Ratio Lower Upper
 146 100
 111 38.2 21.4 64.2
 148 51.9 32.0 96.2





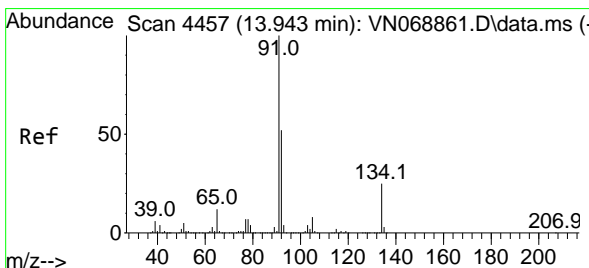
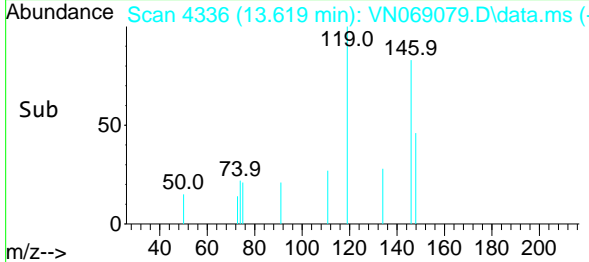
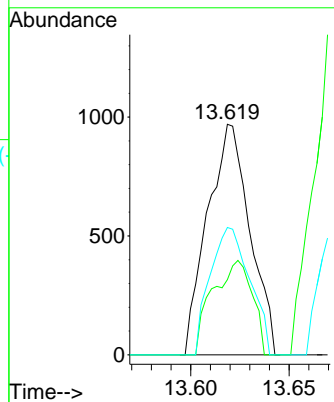
#88
 1,4-Dichlorobenzene
 Concen: 0.221 ug/l
 RT: 13.619 min Scan# 41
 Delta R.T. -0.078 min
 Lab File: VN069079.D
 Acq: 21 Oct 2021 11:08

Instrument :
 MSVOA_N
 ClientSampleId :



Tgt Ion:146 Resp: 1449

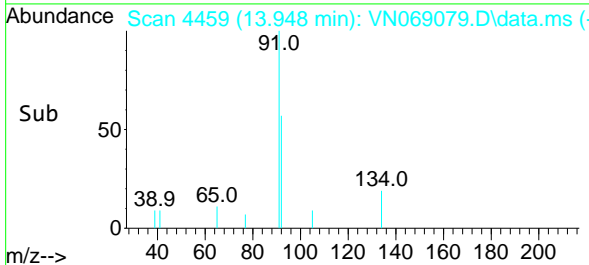
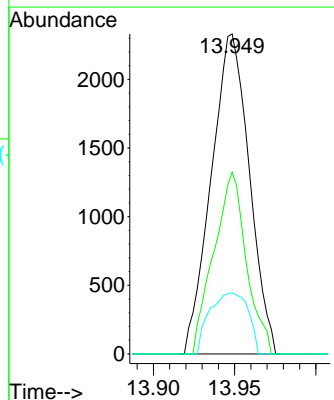
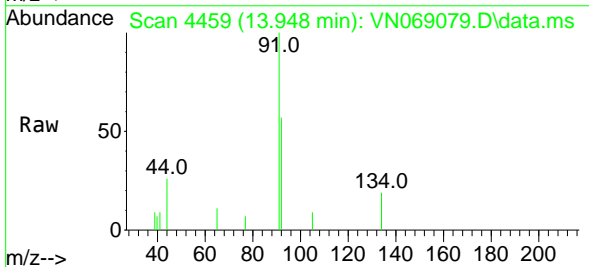
Ion	Ratio	Lower	Upper
146	100		
111	38.2	20.6	61.8
148	51.9	32.1	96.5

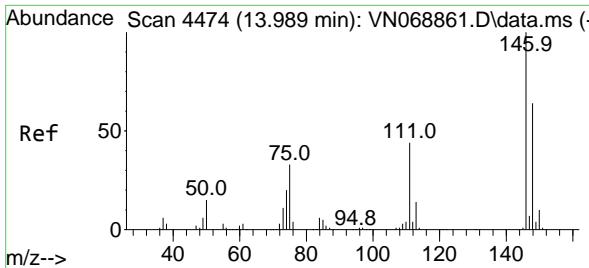


#89
 n-Butylbenzene
 Concen: 0.328 ug/l
 RT: 13.948 min Scan# 4459
 Delta R.T. 0.005 min
 Lab File: VN069079.D
 Acq: 21 Oct 2021 11:08

Tgt Ion: 91 Resp: 3796

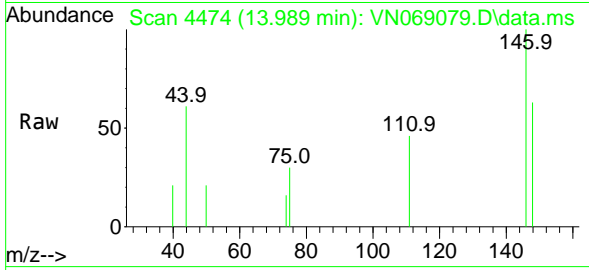
Ion	Ratio	Lower	Upper
91	100		
92	48.7	26.0	78.0
134	19.3	12.5	37.5



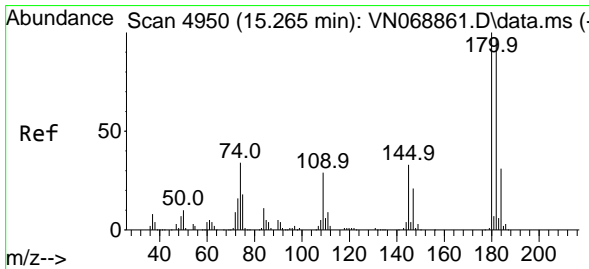
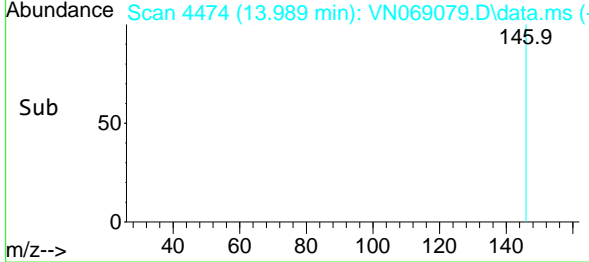
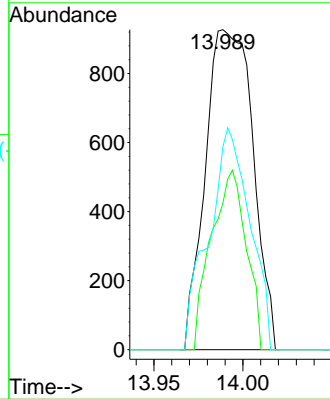


#91
 1,2-Dichlorobenzene
 Concen: 0.268 ug/l
 RT: 13.989 min Scan# 4474
 Delta R.T. 0.000 min
 Lab File: VN069079.D
 Acq: 21 Oct 2021 11:08

Instrument : MSVOA_N
 ClientSampleId :

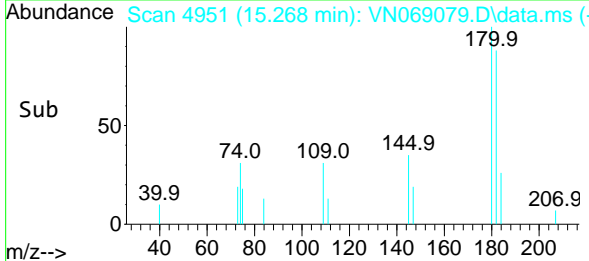
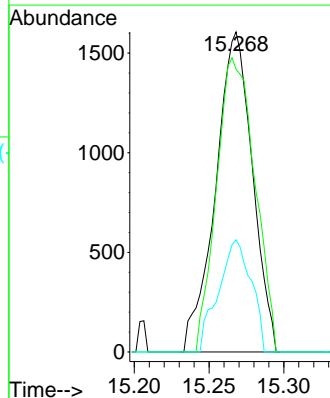
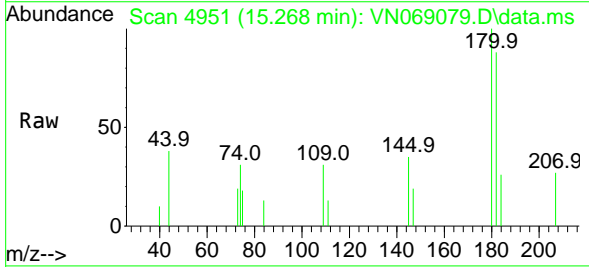


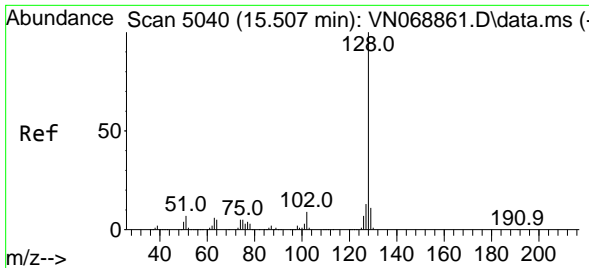
Tgt Ion:146 Resp: 1722
 Ion Ratio Lower Upper
 146 100
 111 41.3 22.0 66.0
 148 60.2 32.1 96.5



#93
 1,2,4-Trichlorobenzene
 Concen: 3.350 ug/l
 RT: 15.268 min Scan# 4951
 Delta R.T. 0.003 min
 Lab File: VN069079.D
 Acq: 21 Oct 2021 11:08

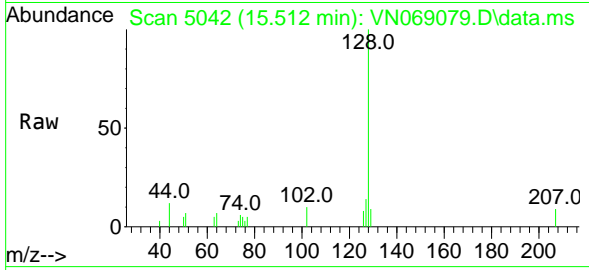
Tgt Ion:180 Resp: 2754
 Ion Ratio Lower Upper
 180 100
 182 95.3 47.9 143.7
 145 31.0 16.4 49.2





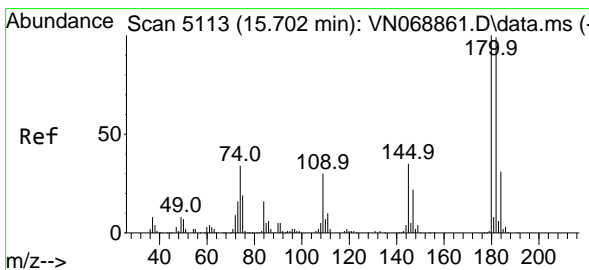
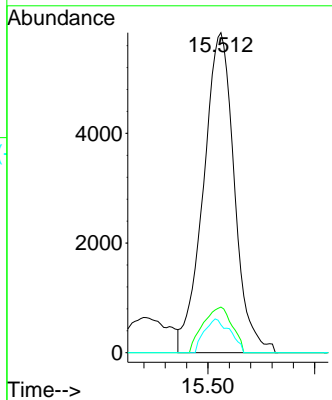
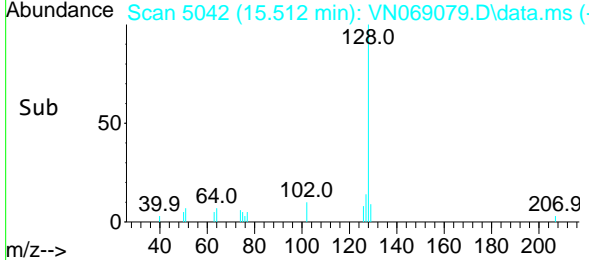
#95
 Naphthalene
 Concen: 4.937 ug/l
 RT: 15.512 min Scan# 5042
 Delta R.T. 0.005 min
 Lab File: VN069079.D
 Acq: 21 Oct 2021 11:08

Instrument : MSVOA_N
 ClientSampleId :

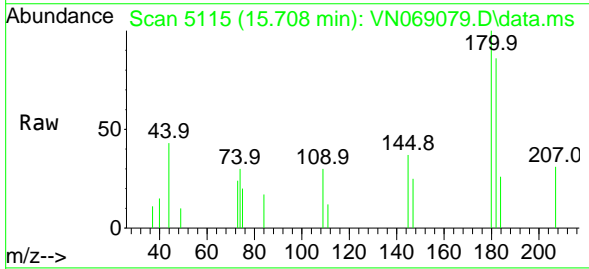


Tgt Ion:128 Resp: 11734

Ion	Ratio	Lower	Upper
128	100		
127	13.4	10.5	15.7
129	8.8	8.9	13.3#



#96
 1,2,3-Trichlorobenzene
 Concen: 3.526 ug/l
 RT: 15.708 min Scan# 5115
 Delta R.T. 0.006 min
 Lab File: VN069079.D
 Acq: 21 Oct 2021 11:08



Tgt Ion:180 Resp: 3536

Ion	Ratio	Lower	Upper
180	100		
182	83.8	48.1	144.3
145	28.8	17.4	52.2

