

Data Path : Z:\voasrv\HPCHEM1\MSVOA_N\Data\VN102221\
 Data File : VN069142.D
 Acq On : 22 Oct 2021 18:33
 Operator : JC/MD
 Sample : M4301-01
 Misc : 5.00mL/MSVOA_N/WATER
 ALS Vial : 18 Sample Multiplier: 1

Instrument :
 MSVOA_N
 ClientSampleId :
 211020074-01-VOA

Manual Integrations
 APPROVED

Reviewed By :John Carlone 10/25/2021
 Supervised By :Mahesh Dadoda 10/25/2021

Quant Time: Oct 23 07:56:30 2021
 Quant Method : Z:\voasrv\HPCHEM1\MSVOA_N\methods\624N102221W.M
 Quant Title : METHOD 624 VOLATILE ORGANIC ANALYSIS
 QLast Update : Fri Oct 22 13:15:19 2021
 Response via : Initial Calibration

Compound	R.T.	QIon	Response	Conc	Units	Dev(Min)	

Internal Standards							
1) Bromochloromethane	7.662	128	47158	30.000	ug/l	0.00	
28) 1,4-Difluorobenzene	8.971	114	285983	30.000	ug/l	0.00	
57) Chlorobenzene-d5	11.746	117	252694	30.000	ug/l	0.00	
System Monitoring Compounds							
27) 1,2-Dichloroethane-d4	8.440	65	115916	31.558	ug/l	0.00	
Spiked Amount	30.000	Range	91 - 110	Recovery	=	105.200%	
60) 4-Bromofluorobenzene	12.733	95	114003	26.311	ug/l	0.00	
Spiked Amount	30.000	Range	63 - 112	Recovery	=	87.700%	
63) Toluene-d8	10.443	98	337691	29.578	ug/l	0.00	
Spiked Amount	30.000	Range	91 - 112	Recovery	=	98.600%	
Target Compounds							
							Qvalue
8) Diethyl Ether	3.827	74	23881	13.479	ug/l		96
15) Acetone	4.296	58	4542m	10.137	ug/l		
24) Methyl tert-Butyl Ether	5.621	73	10237	1.018	ug/l #		76
30) 2-Butanone	7.316	43	16888	7.815	ug/l #		63
34) Benzene	8.461	78	38970	2.900	ug/l #		63
45) 1,4-Dioxane	9.569	88	14497	232.062	ug/l #		72
62) Toluene	10.507	91	7496	0.509	ug/l		99
64) Chlorobenzene	11.773	112	176173	19.736	ug/l		100
67) m/p-Xylenes	11.956	106	15780	2.536	ug/l		95
68) o-Xylene	12.283	106	13195	2.118	ug/l		93
70) Isopropylbenzene	12.581	105	18240	1.117	ug/l		99
75) 2-Chlorotoluene	13.010	91	12488	1.087	ug/l		94
80) 1,2,4-Trimethylbenzene	13.372	105	13037	0.975	ug/l #		81
84) 1,4-Dichlorobenzene	13.696	146	56719	8.935	ug/l		97
87) 1,2-Dichlorobenzene	13.991	146	4753	0.763	ug/l		76
91) Naphthalene	15.509	128	18671	2.055	ug/l		99

(#) = qualifier out of range (m) = manual integration (+) = signals summed

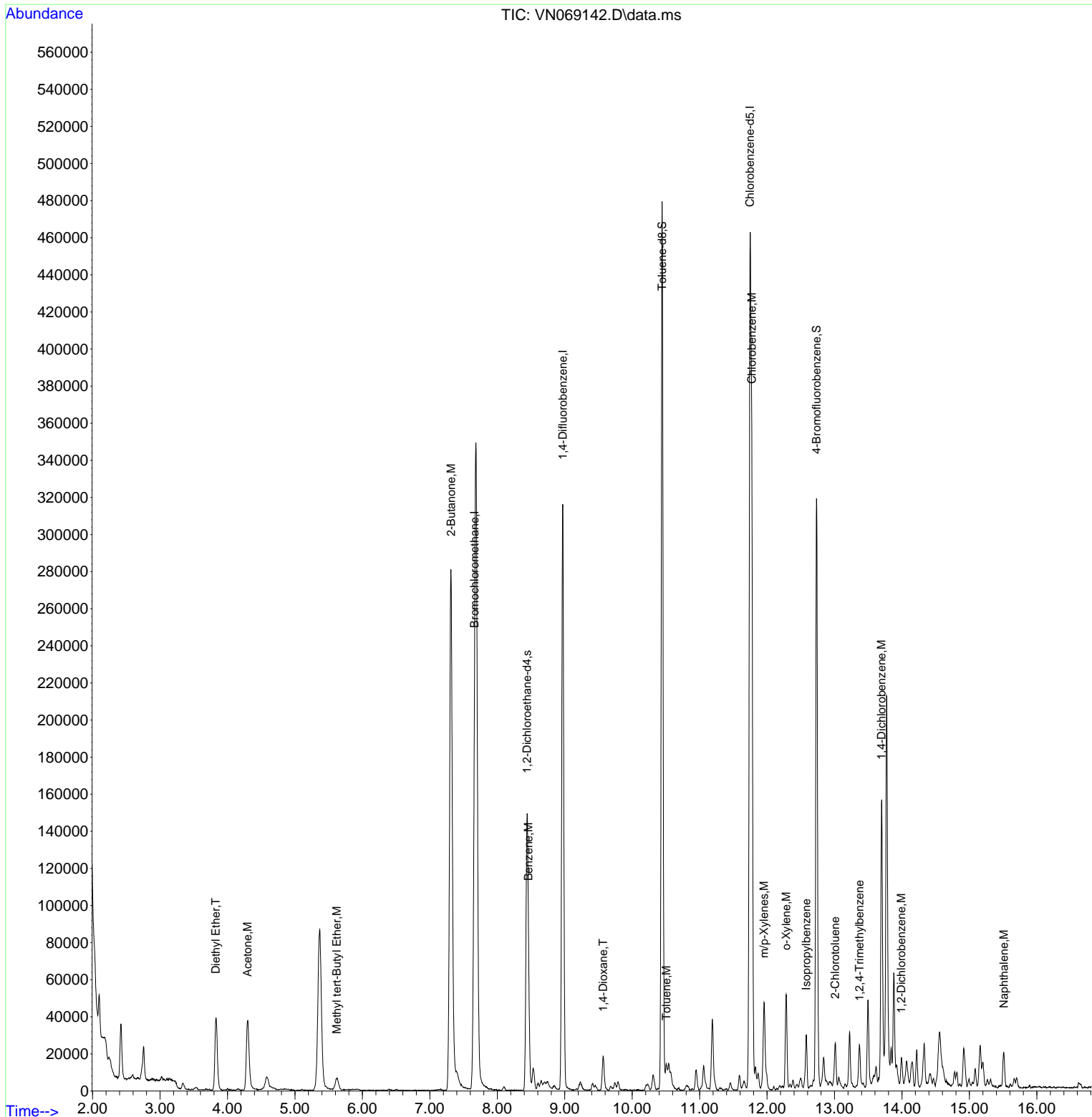
Data Path : Z:\voasrv\HPCHEM1\MSVOA_N\Data\VN102221\
 Data File : VN069142.D
 Acq On : 22 Oct 2021 18:33
 Operator : JC/MD
 Sample : M4301-01
 Misc : 5.00mL/MSVOA_N/WATER
 ALS Vial : 18 Sample Multiplier: 1

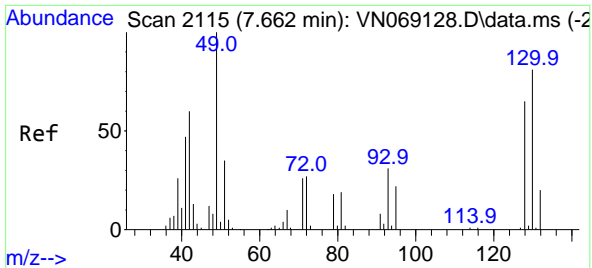
Instrument :
 MSVOA_N
 ClientSampleId :
 211020074-01-VOA

Manual Integrations
 APPROVED

Reviewed By : John Carlone 10/25/2021
 Supervised By : Mahesh Dadoda 10/25/2021

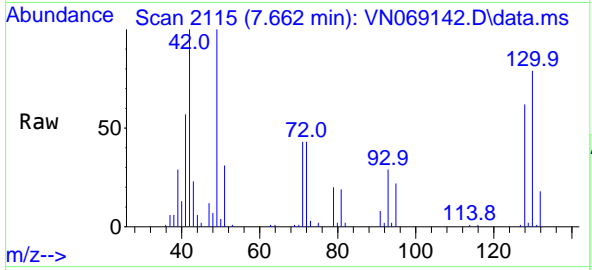
Quant Time: Oct 23 07:56:30 2021
 Quant Method : Z:\voasrv\HPCHEM1\MSVOA_N\methods\624N102221W.M
 Quant Title : METHOD 624 VOLATILE ORGANIC ANALYSIS
 QLast Update : Fri Oct 22 13:15:19 2021
 Response via : Initial Calibration





#1
 Bromochloromethane
 Concen: 30.000 ug/l
 RT: 7.662 min Scan# 2115
 Delta R.T. -0.000 min
 Lab File: VN069142.D
 Acq: 22 Oct 2021 18:33

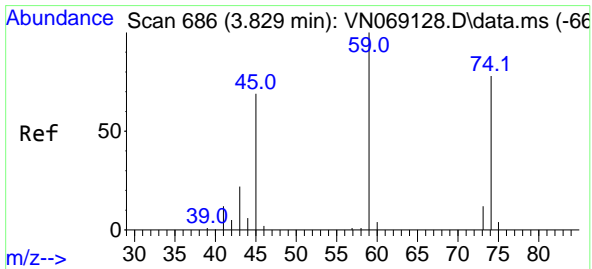
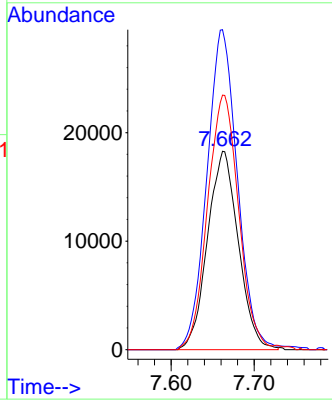
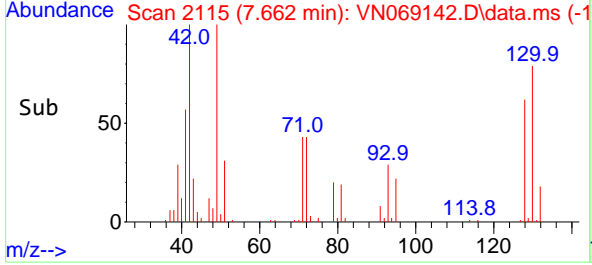
Instrument : MSVOA_N
 Client Sample Id : 211020074-01-VOA



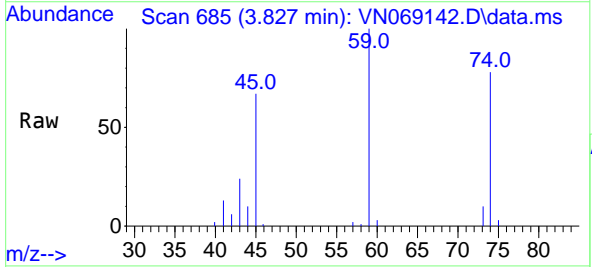
Tgt Ion: 128 Resp: 4715
 Ion Ratio Lower Upper
 128 100
 49 159.2 0.0 392.3
 130 129.3 0.0 320.2

Manual Integrations
APPROVED

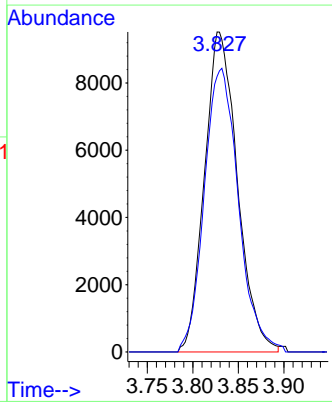
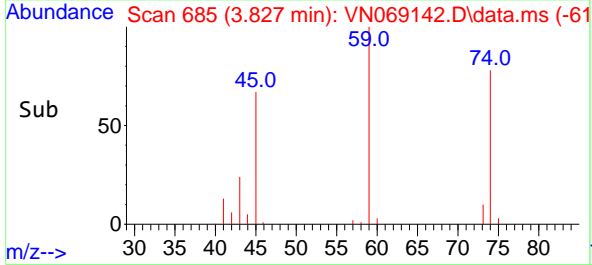
Reviewed By : John Carlone 10/25/2021
 Supervised By : Mahesh Dadoda 10/25/2021

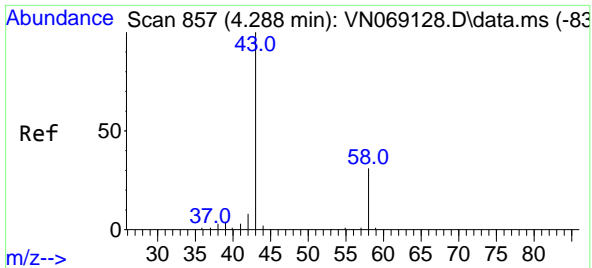


#8
 Diethyl Ether
 Concen: 13.479 ug/l
 RT: 3.827 min Scan# 685
 Delta R.T. -0.003 min
 Lab File: VN069142.D
 Acq: 22 Oct 2021 18:33



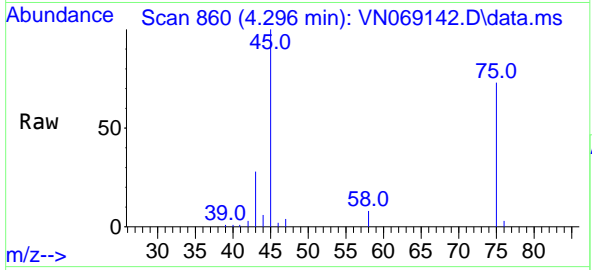
Tgt Ion: 74 Resp: 23881
 Ion Ratio Lower Upper
 74 100
 45 92.0 17.6 158.8





#15
 Acetone
 Concen: 10.137 ug/l m
 RT: 4.296 min Scan# 80
 Delta R.T. 0.008 min
 Lab File: VN069142.D
 Acq: 22 Oct 2021 18:33

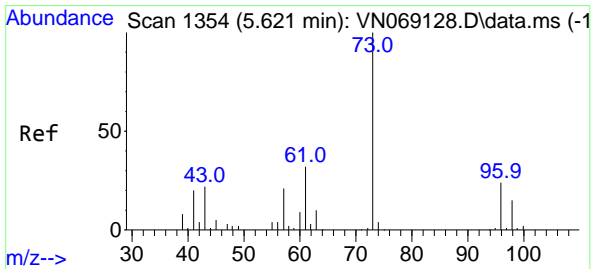
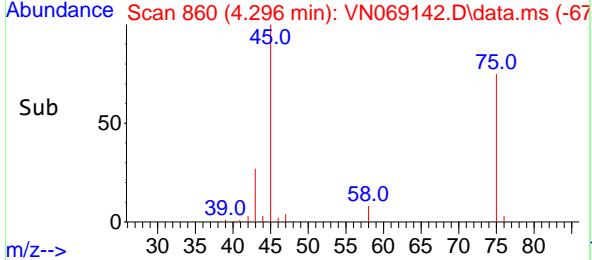
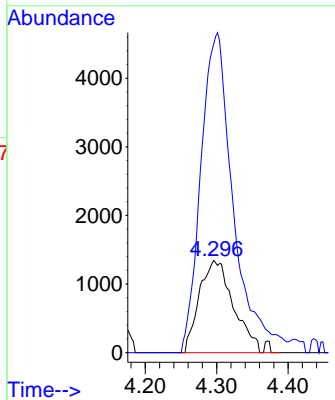
Instrument :
 MSVOA_N
ClientSampleId :
 211020074-01-VOA



Tgt Ion: 58 Resp: 454
 Ion Ratio Lower Upper
 58 100
 43 334.8 256.6 384.8

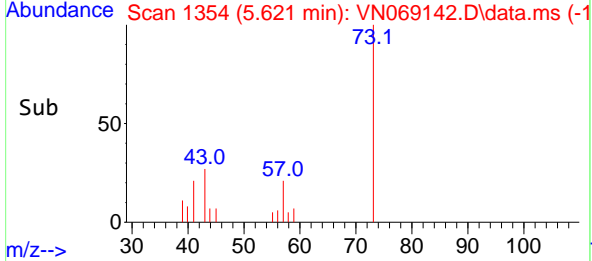
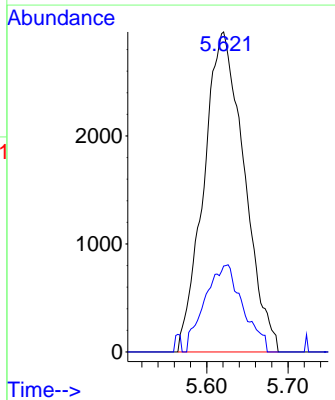
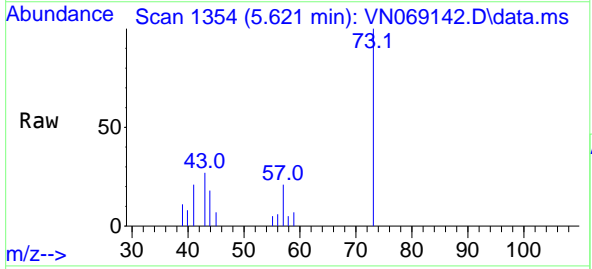
Manual Integrations
APPROVED

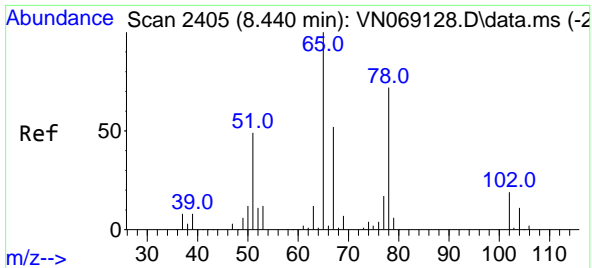
Reviewed By :John Carlone 10/25/2021
 Supervised By :Mahesh Dadoda 10/25/2021



#24
 Methyl tert-Butyl Ether
 Concen: 1.018 ug/l
 RT: 5.621 min Scan# 1354
 Delta R.T. 0.000 min
 Lab File: VN069142.D
 Acq: 22 Oct 2021 18:33

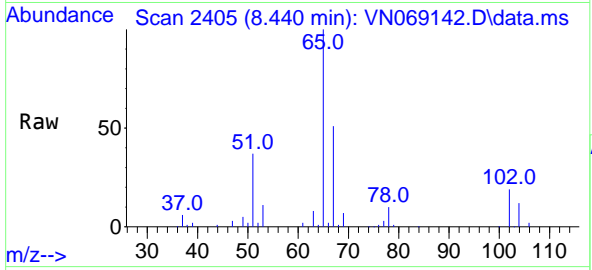
Tgt Ion: 73 Resp: 10237
 Ion Ratio Lower Upper
 73 100
 43 10.8 18.1 27.1#





#27
 1,2-Dichloroethane-d4
 Concen: 31.558 ug/l
 RT: 8.440 min Scan# 2405
 Delta R.T. 0.000 min
 Lab File: VN069142.D
 Acq: 22 Oct 2021 18:33

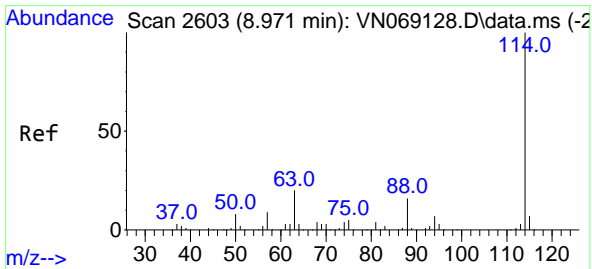
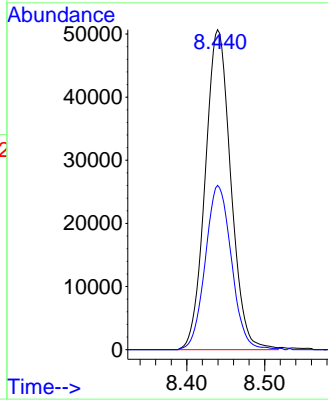
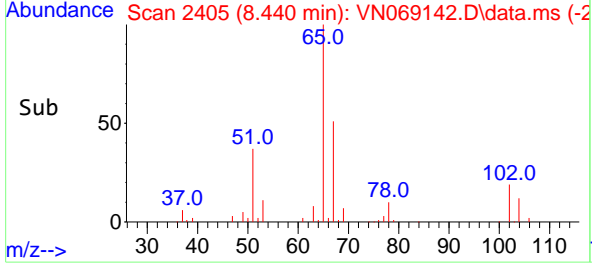
Instrument : MSVOA_N
 ClientSampleId : 211020074-01-VOA



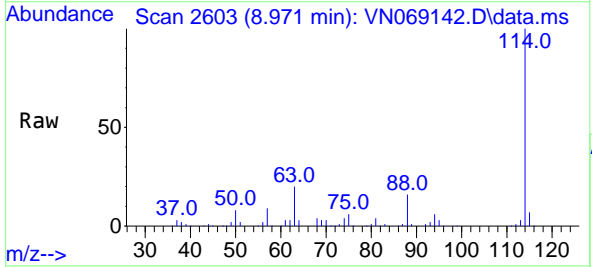
Tgt Ion: 65 Resp: 115910
 Ion Ratio Lower Upper
 65 100
 67 52.1 40.2 60.2

Manual Integrations
APPROVED

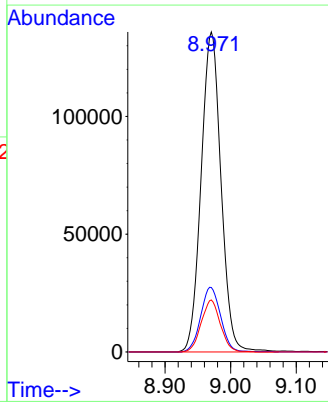
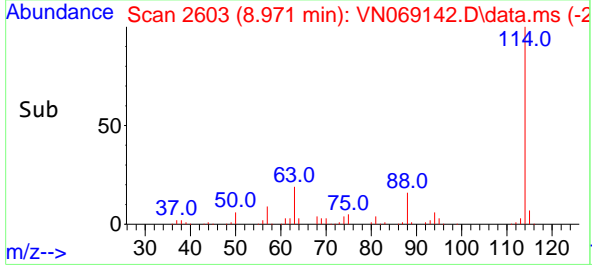
Reviewed By :John Carlone 10/25/2021
 Supervised By :Mahesh Dadoda 10/25/2021

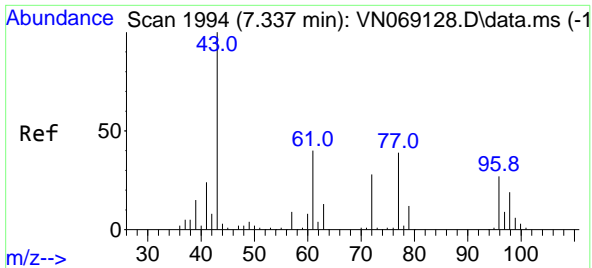


#28
 1,4-Difluorobenzene
 Concen: 30.000 ug/l
 RT: 8.971 min Scan# 2603
 Delta R.T. 0.000 min
 Lab File: VN069142.D
 Acq: 22 Oct 2021 18:33



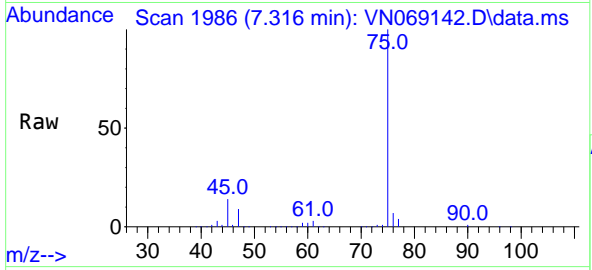
Tgt Ion:114 Resp: 285983
 Ion Ratio Lower Upper
 114 100
 63 20.4 15.8 23.6
 88 15.6 11.6 17.4





#30
 2-Butanone
 Concen: 7.815 ug/l
 RT: 7.316 min Scan# 1994
 Delta R.T. -0.021 min
 Lab File: VN069142.D
 Acq: 22 Oct 2021 18:33

Instrument : MSVOA_N
 ClientSampleId : 211020074-01-VOA

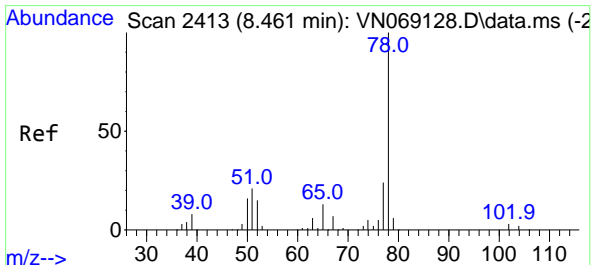
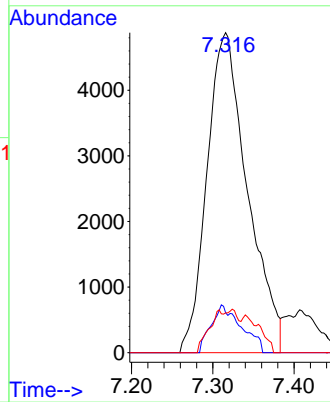
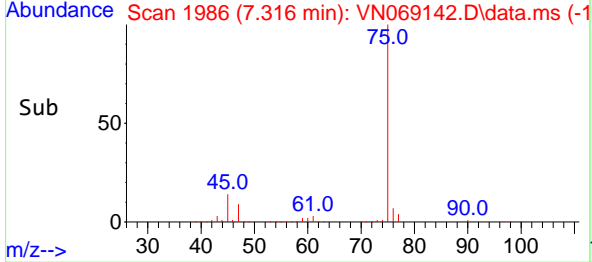


Tgt Ion: 43 Resp: 1688

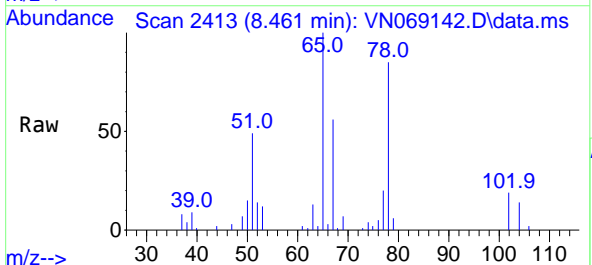
Ion	Ratio	Lower	Upper
43	100		
57	6.0	6.7	10.1
72	4.8	23.2	34.8

Manual Integrations
 APPROVED

Reviewed By :John Carlone 10/25/2021
 Supervised By :Mahesh Dadoda 10/25/2021

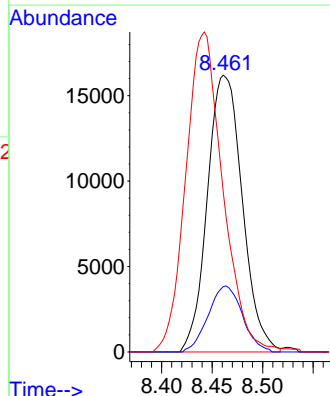
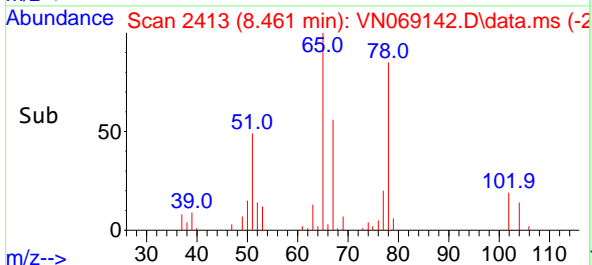


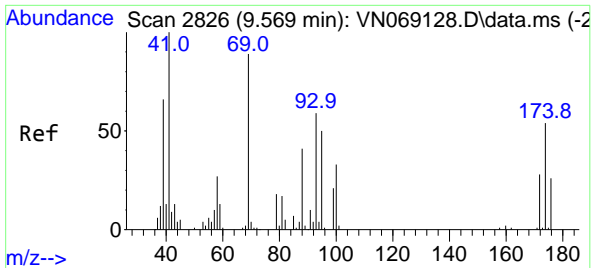
#34
 Benzene
 Concen: 2.900 ug/l
 RT: 8.461 min Scan# 2413
 Delta R.T. 0.000 min
 Lab File: VN069142.D
 Acq: 22 Oct 2021 18:33



Tgt Ion: 78 Resp: 38970

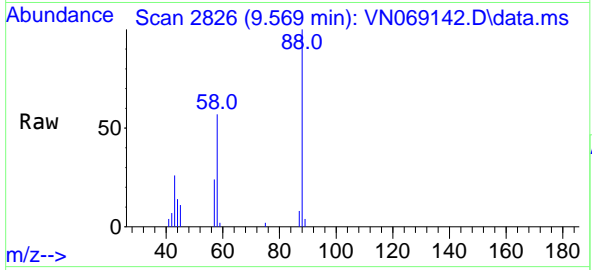
Ion	Ratio	Lower	Upper
78	100		
77	23.6	19.1	28.7
51	56.6	16.0	24.0





#45
 1,4-Dioxane
 Concen: 232.062 ug/l
 RT: 9.569 min Scan# 2826
 Delta R.T. 0.000 min
 Lab File: VN069142.D
 Acq: 22 Oct 2021 18:33

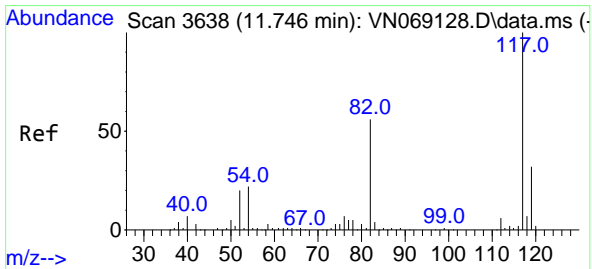
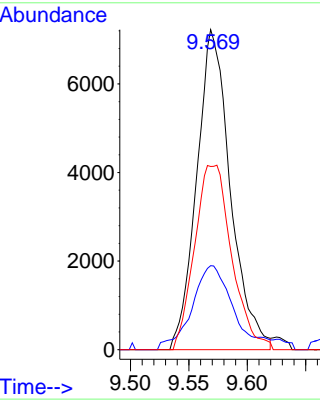
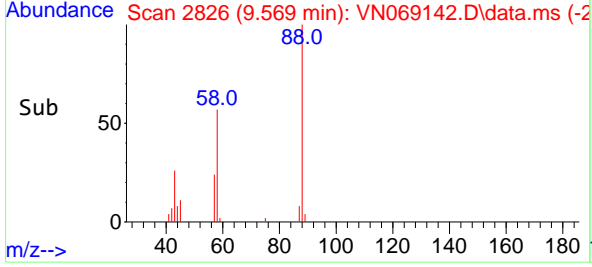
Instrument : MSVOA_N
 Client Sample Id : 211020074-01-VOA



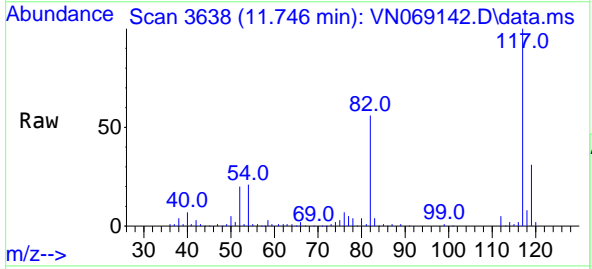
Tgt Ion: 88 Resp: 1449

Ion	Ratio	Lower	Upper
88	100		
43	30.6	25.0	37.6
58	29.7	49.4	74.2

Manual Integrations
APPROVED
 Reviewed By : John Carlone 10/25/2021
 Supervised By : Mahesh Dadoda 10/25/2021

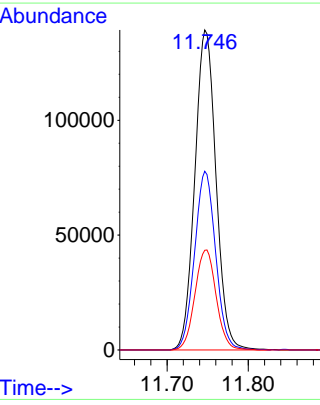
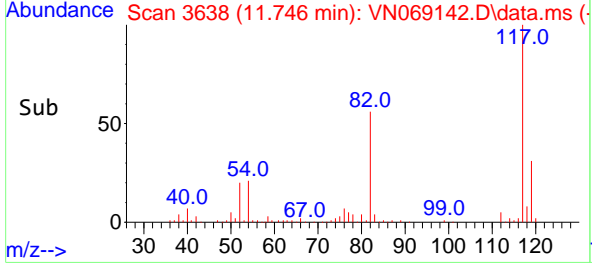


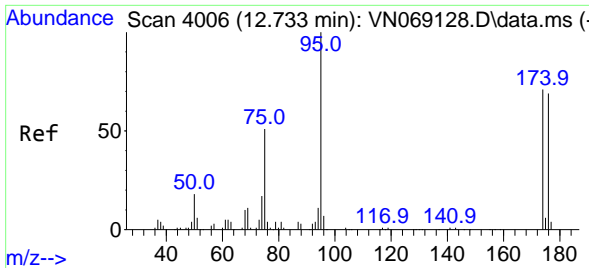
#57
 Chlorobenzene-d5
 Concen: 30.000 ug/l
 RT: 11.746 min Scan# 3638
 Delta R.T. 0.000 min
 Lab File: VN069142.D
 Acq: 22 Oct 2021 18:33



Tgt Ion: 117 Resp: 252694

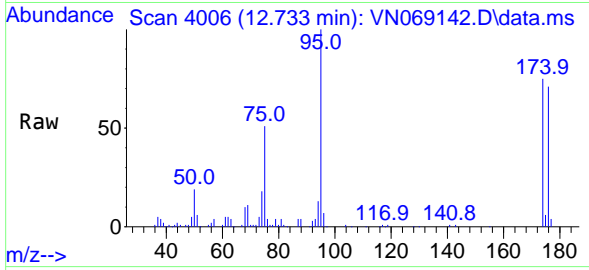
Ion	Ratio	Lower	Upper
117	100		
82	55.5	43.6	65.4
119	31.4	25.8	38.6





#60
 4-Bromofluorobenzene
 Concen: 26.311 ug/l
 RT: 12.733 min Scan# 4006
 Delta R.T. 0.000 min
 Lab File: VN069142.D
 Acq: 22 Oct 2021 18:33

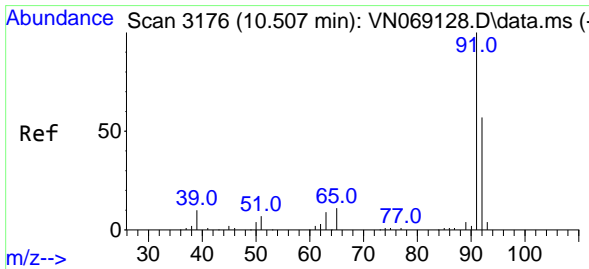
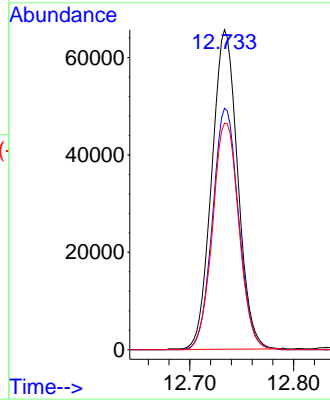
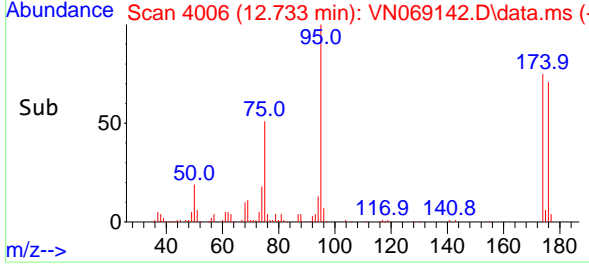
Instrument : MSVOA_N
 Client Sample Id : 211020074-01-VOA



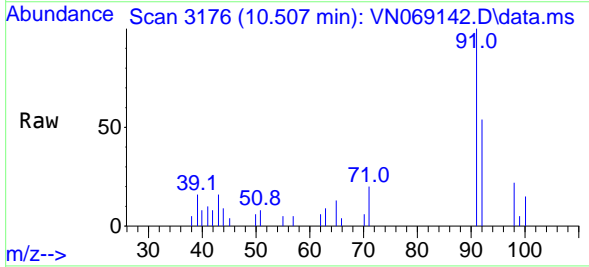
Tgt Ion: 95 Resp: 11400
 Ion Ratio Lower Upper
 95 100
 174 75.9 62.9 94.3
 176 72.1 61.0 91.4

Manual Integrations
APPROVED

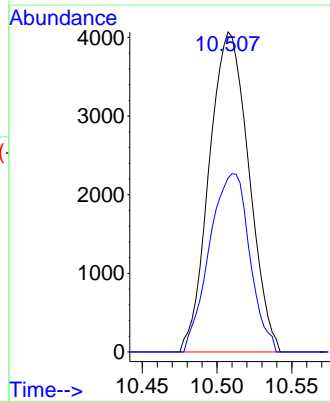
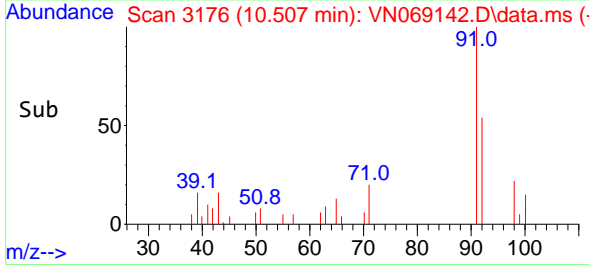
Reviewed By : John Carlone 10/25/2021
 Supervised By : Mahesh Dadoda 10/25/2021

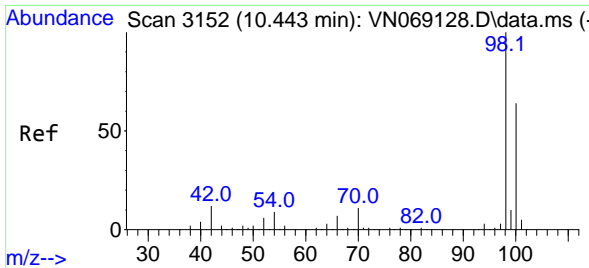


#62
 Toluene
 Concen: 0.509 ug/l
 RT: 10.507 min Scan# 3176
 Delta R.T. 0.000 min
 Lab File: VN069142.D
 Acq: 22 Oct 2021 18:33



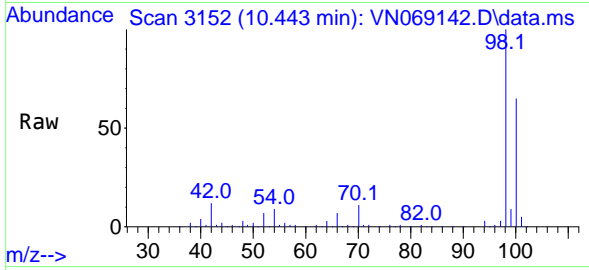
Tgt Ion: 91 Resp: 7496
 Ion Ratio Lower Upper
 91 100
 92 56.7 44.6 67.0





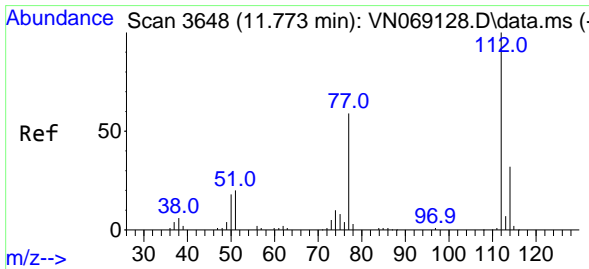
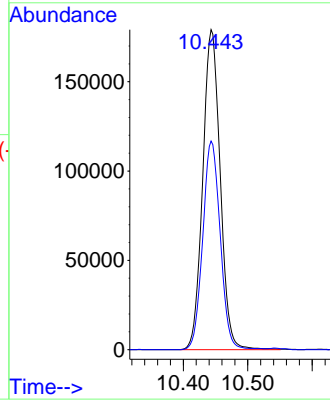
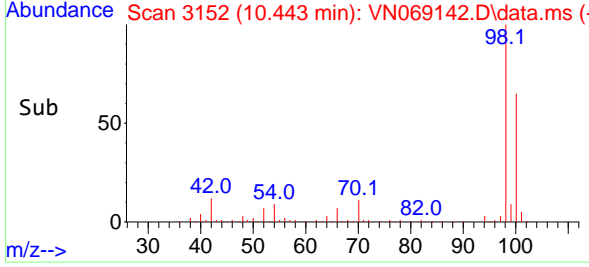
#63
 Toluene-d8
 Concen: 29.578 ug/l
 RT: 10.443 min Scan# 3152
 Delta R.T. 0.000 min
 Lab File: VN069142.D
 Acq: 22 Oct 2021 18:33

Instrument : MSVOA_N
 ClientSampleId : 211020074-01-VOA

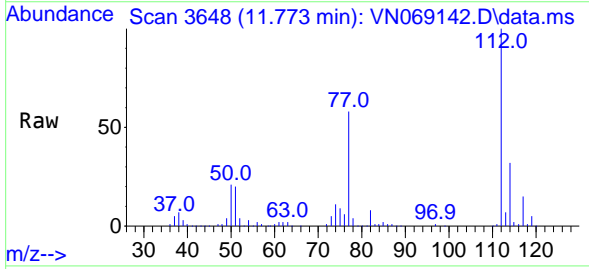


Tgt Ion: 98 Resp: 33769
 Ion Ratio Lower Upper
 98 100
 100 65.0 50.6 76.0

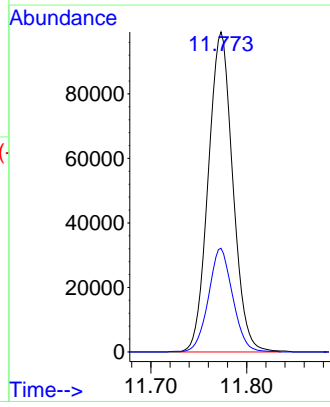
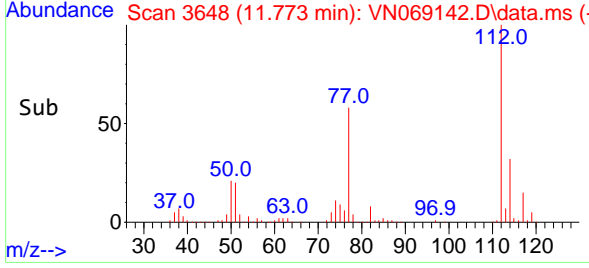
Manual Integrations
APPROVED
 Reviewed By :John Carlone 10/25/2021
 Supervised By :Mahesh Dadoda 10/25/2021

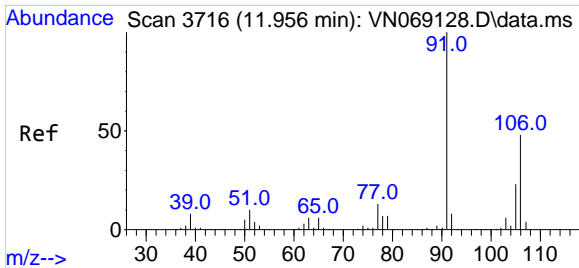


#64
 Chlorobenzene
 Concen: 19.736 ug/l
 RT: 11.773 min Scan# 3648
 Delta R.T. 0.000 min
 Lab File: VN069142.D
 Acq: 22 Oct 2021 18:33



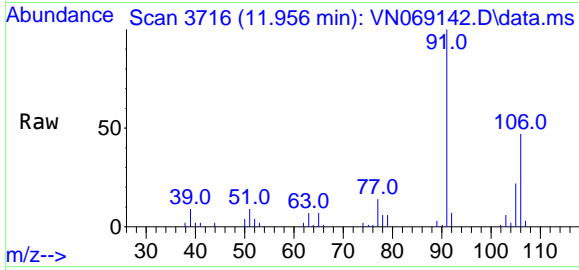
Tgt Ion:112 Resp: 176173
 Ion Ratio Lower Upper
 112 100
 114 32.4 25.8 38.6





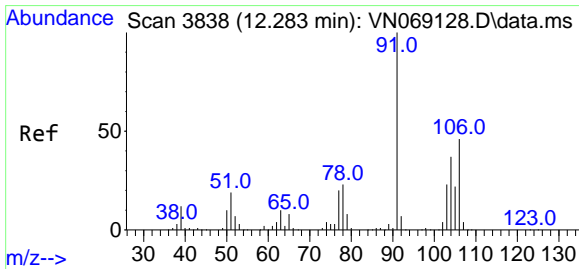
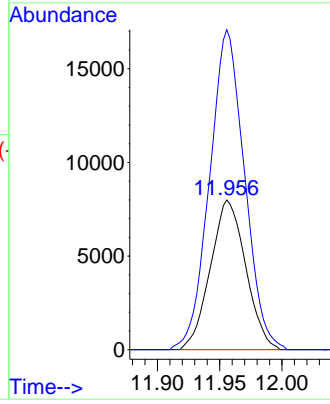
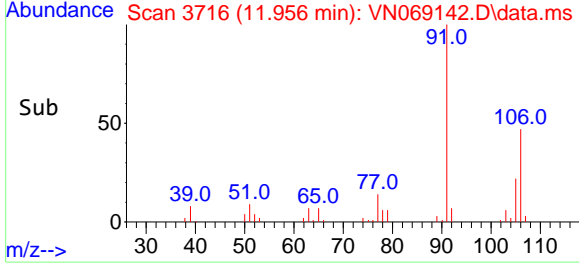
#67
 m/p-Xylenes
 Concen: 2.536 ug/l
 RT: 11.956 min Scan# 31
 Delta R.T. 0.000 min
 Lab File: VN069142.D
 Acq: 22 Oct 2021 18:33

Instrument : MSVOA_N
 Client Sample Id : 211020074-01-VOA

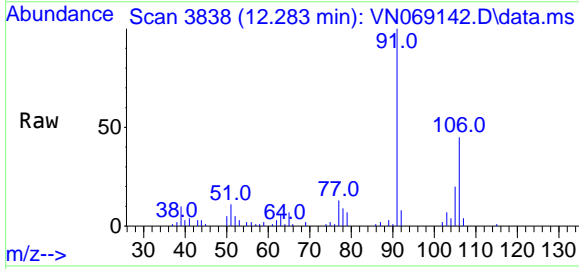


Tgt Ion:106 Resp: 15780
 Ion Ratio Lower Upper
 106 100
 91 211.2 162.9 244.3

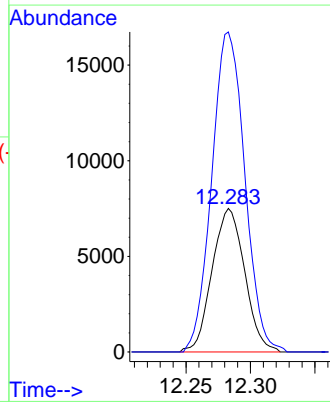
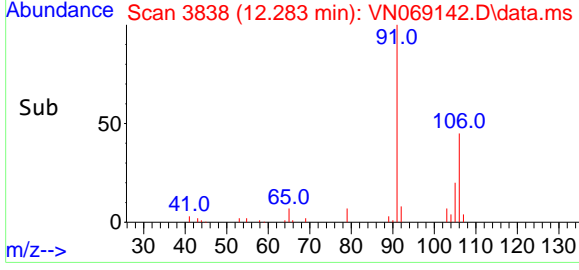
Manual Integrations
APPROVED
 Reviewed By :John Carlone 10/25/2021
 Supervised By :Mahesh Dadoda 10/25/2021

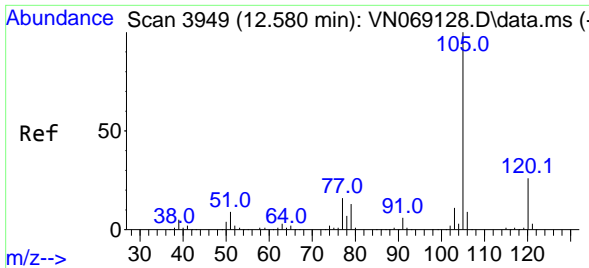


#68
 o-Xylene
 Concen: 2.118 ug/l
 RT: 12.283 min Scan# 3838
 Delta R.T. 0.000 min
 Lab File: VN069142.D
 Acq: 22 Oct 2021 18:33



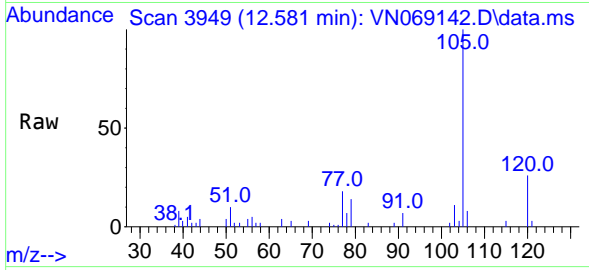
Tgt Ion:106 Resp: 13195
 Ion Ratio Lower Upper
 106 100
 91 226.0 107.7 323.1





#70
 Isopropylbenzene
 Concen: 1.117 ug/l
 RT: 12.581 min Scan# 3949
 Delta R.T. 0.000 min
 Lab File: VN069142.D
 Acq: 22 Oct 2021 18:33

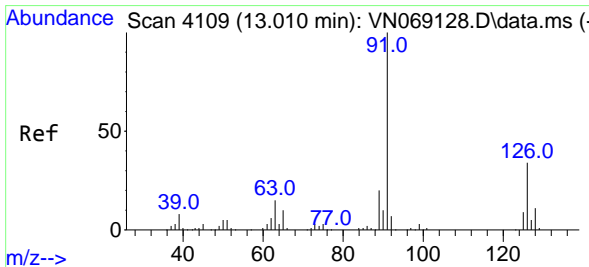
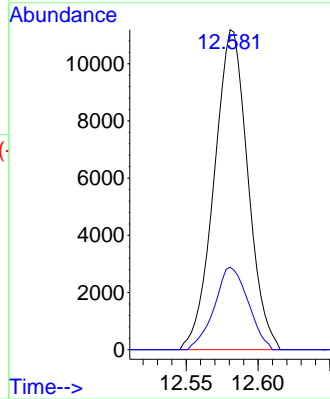
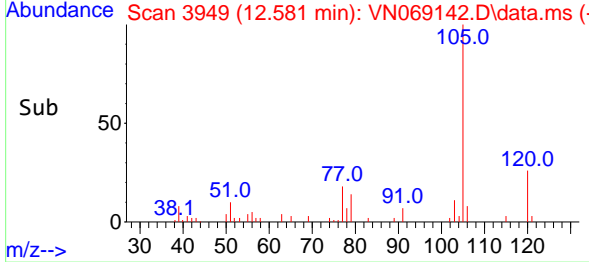
Instrument : MSVOA_N
 Client Sample ID : 211020074-01-VOA



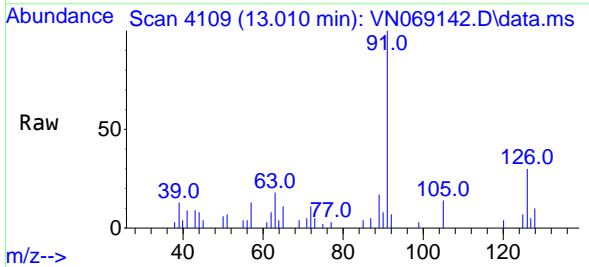
Tgt Ion: 105 Resp: 18240
 Ion Ratio Lower Upper
 105 100
 120 25.8 18.3 34.1

Manual Integrations
 APPROVED

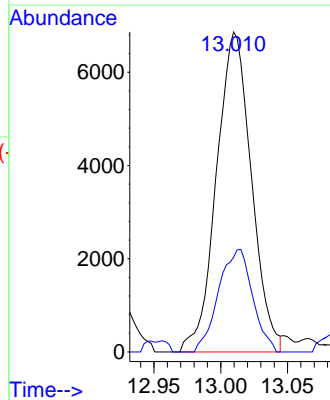
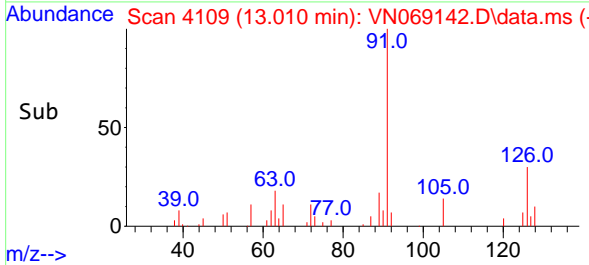
Reviewed By : John Carlone 10/25/2021
 Supervised By : Mahesh Dadoda 10/25/2021

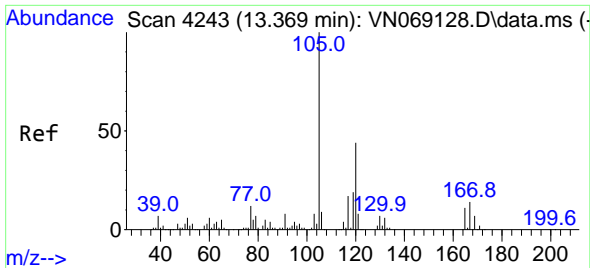


#75
 2-Chlorotoluene
 Concen: 1.087 ug/l
 RT: 13.010 min Scan# 4109
 Delta R.T. 0.000 min
 Lab File: VN069142.D
 Acq: 22 Oct 2021 18:33



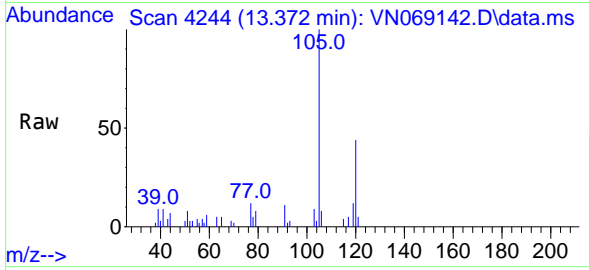
Tgt Ion: 91 Resp: 12488
 Ion Ratio Lower Upper
 91 100
 126 31.1 0.0 69.8





#80
 1,2,4-Trimethylbenzene
 Concen: 0.975 ug/l
 RT: 13.372 min Scan# 41
 Delta R.T. 0.003 min
 Lab File: VN069142.D
 Acq: 22 Oct 2021 18:33

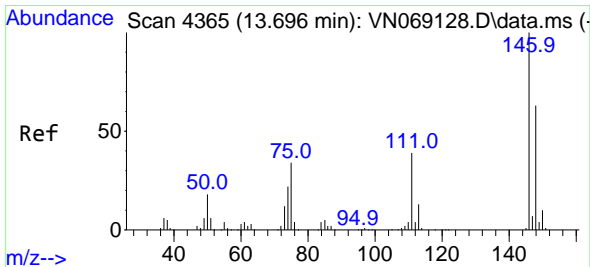
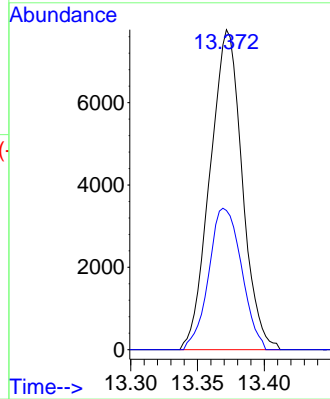
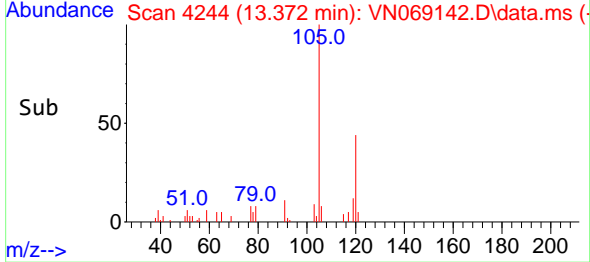
Instrument :
 MSVOA_N
 ClientSampleId :
 211020074-01-VOA



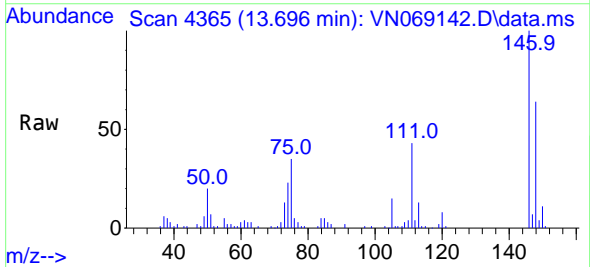
Tgt Ion:105 Resp: 1303
 Ion Ratio Lower Upper
 105 100
 120 45.1 0.0 0.2

Manual Integrations
APPROVED

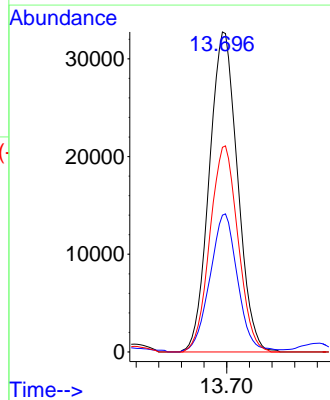
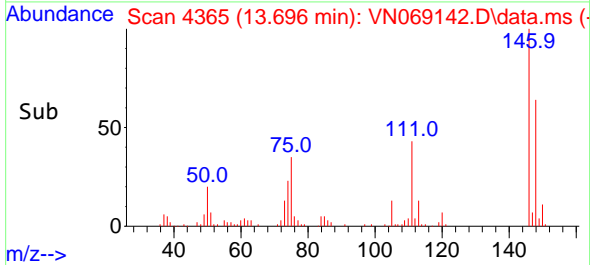
Reviewed By :John Carlone 10/25/2021
 Supervised By :Mahesh Dadoda 10/25/2021

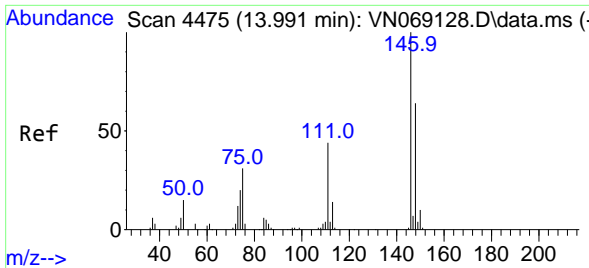


#84
 1,4-Dichlorobenzene
 Concen: 8.935 ug/l
 RT: 13.696 min Scan# 4365
 Delta R.T. 0.000 min
 Lab File: VN069142.D
 Acq: 22 Oct 2021 18:33



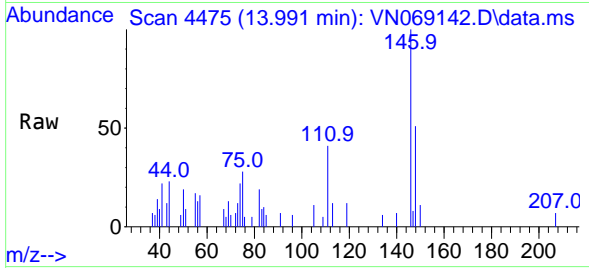
Tgt Ion:146 Resp: 56719
 Ion Ratio Lower Upper
 146 100
 111 42.3 19.5 58.5
 148 64.1 31.1 93.5





#87
 1,2-Dichlorobenzene
 Concen: 0.763 ug/l
 RT: 13.991 min Scan# 4475
 Delta R.T. 0.000 min
 Lab File: VN069142.D
 Acq: 22 Oct 2021 18:33

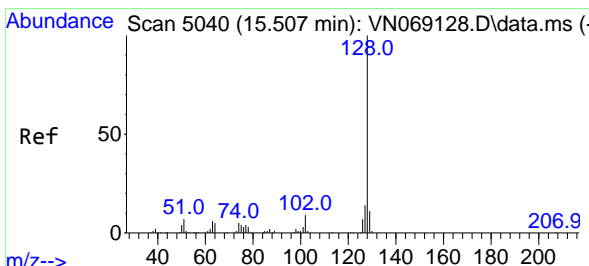
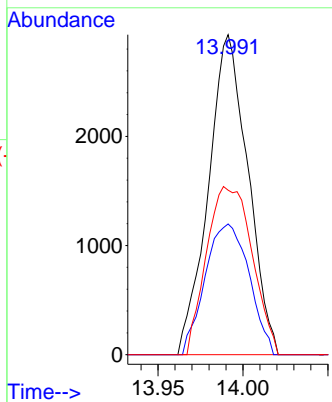
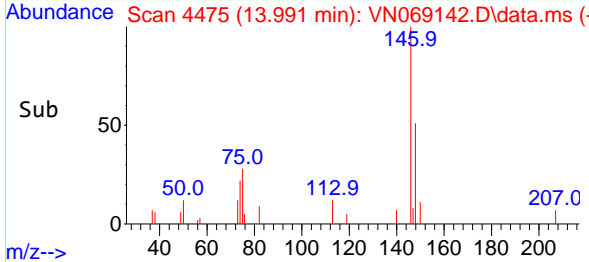
Instrument :
 MSVOA_N
 ClientSampleId :
 211020074-01-VOA



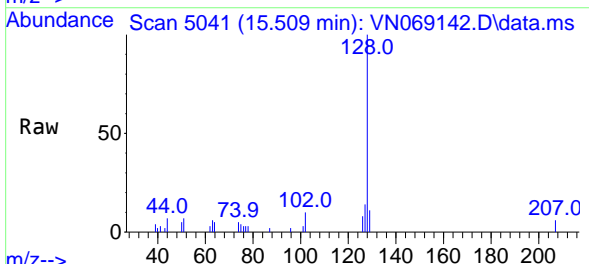
Tgt Ion:146 Resp: 475
 Ion Ratio Lower Upper
 146 100
 111 45.3 21.4 64.2
 148 35.8 32.5 97.4

Manual Integrations
APPROVED

Reviewed By :John Carlone 10/25/2021
 Supervised By :Mahesh Dadoda 10/25/2021



#91
 Naphthalene
 Concen: 2.055 ug/l
 RT: 15.509 min Scan# 5041
 Delta R.T. 0.003 min
 Lab File: VN069142.D
 Acq: 22 Oct 2021 18:33



Tgt Ion:128 Resp: 18671
 Ion Ratio Lower Upper
 128 100
 127 13.4 10.7 16.1
 129 10.4 9.0 13.6

