

Data Path : Z:\VOASRV\HPCHEM1\MSVOA N\DATA\VN102519\
 Data File : VN058960.D
 Acq On : 24 Oct 2019 14:50
 Operator : JC/SP
 Sample : K5486-02RE
 Misc : 5.00mL/MSVOA N/WATER
 ALS Vial : 16 Sample Multiplier: 1

Instrument :
 MSVOA_N
 ClientSampleId :
 KY038PS027-191021RE

Quant Time: Oct 25 02:12:13 2019
 Quant Method : Z:\VOASRV\HPCHEM1\MSVOA_N\METHODS\82N101819W.M
 Quant Title : SW846 8260
 QLast Update : Sat Oct 19 00:16:20 2019
 Response via : Initial Calibration

Internal Standards	R.T.	QIon	Response	Conc	Units	Dev(Min)
1) Pentafluorobenzene	7.65	168	353022	50.00	ug/l	0.00
34) 1,4-Difluorobenzene	8.57	114	551317	50.00	ug/l	0.00
63) Chlorobenzene-d5	11.41	117	479063	50.00	ug/l	0.00
72) 1,4-Dichlorobenzene-d4	13.35	152	166017	50.00	ug/l	0.00

System Monitoring Compounds

33) 1,2-Dichloroethane-d4	8.01	65	258207	49.87	ug/l	0.00
Spiked Amount				50.000		
			Recovery	=	99.74%	
35) Dibromofluoromethane	7.57	113	185121	51.07	ug/l	0.00
Spiked Amount				50.000		
			Recovery	=	102.14%	
50) Toluene-d8	10.08	98	692907	49.24	ug/l	0.00
Spiked Amount				50.000		
			Recovery	=	98.48%	
62) 4-Bromofluorobenzene	12.40	95	212354	41.10	ug/l	0.00
Spiked Amount				50.000		
			Recovery	=	82.20%	

Target Compounds

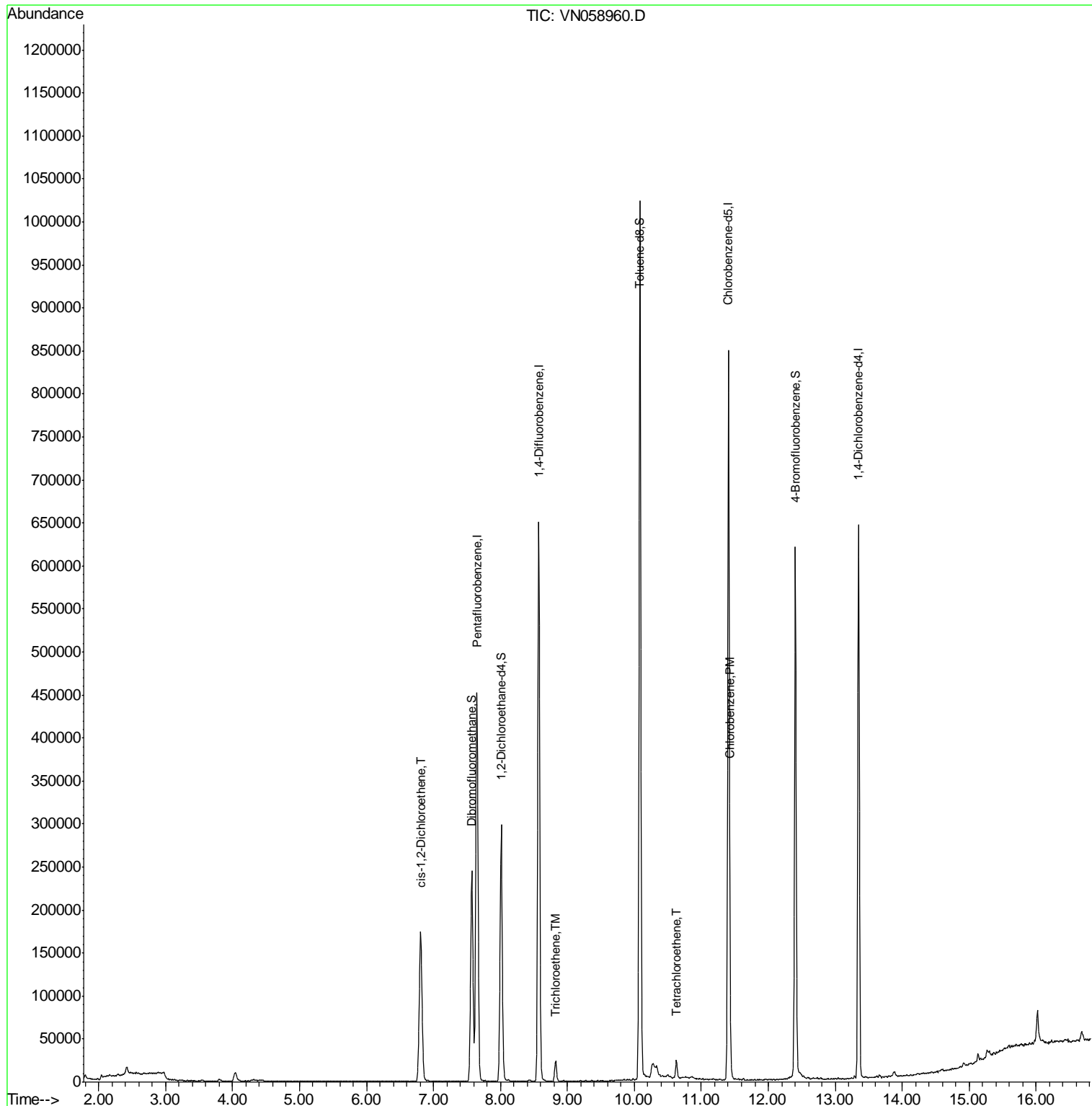
						Qvalue
27) cis-1,2-Dichloroethene	6.81	96	109022	24.832	ug/l	89
44) Trichloroethene	8.82	130	8938	2.214	ug/l	94
64) Tetrachloroethene	10.63	164	4469	1.332	ug/l	99
65) Chlorobenzene	11.43	112	12224	1.253	ug/l	92

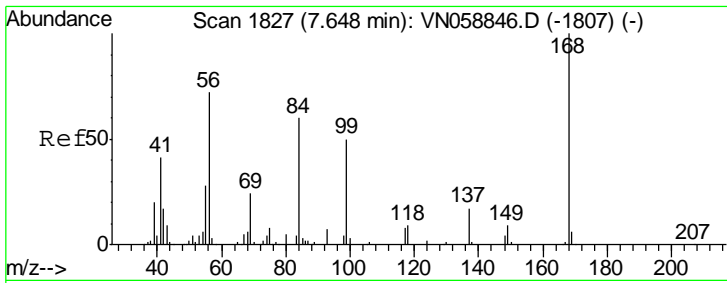
(#) = qualifier out of range (m) = manual integration (+) = signals summed

Data Path : Z:\VOASRV\HPCHEM1\MSVOA N\DATA\VN102519\
 Data File : VN058960.D
 Acq On : 24 Oct 2019 14:50
 Operator : JC/SP
 Sample : K5486-02RE
 Misc : 5.00mL/MSVOA N/WATER
 ALS Vial : 16 Sample Multiplier: 1

Instrument :
 MSVOA_N
ClientSampleId :
 KY038PS027-191021RE

Quant Time: Oct 25 02:12:13 2019
 Quant Method : Z:\VOASRV\HPCHEM1\MSVOA_N\METHODS\82N101819W.M
 Quant Title : SW846 8260
 QLast Update : Sat Oct 19 00:16:20 2019
 Response via : Initial Calibration

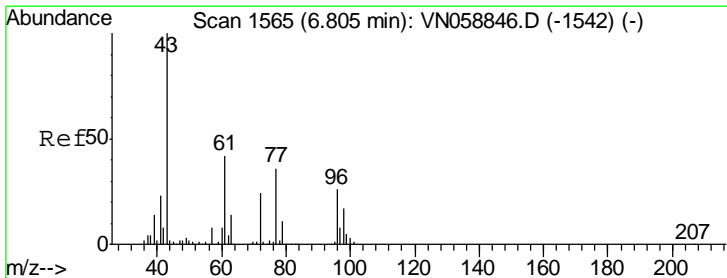
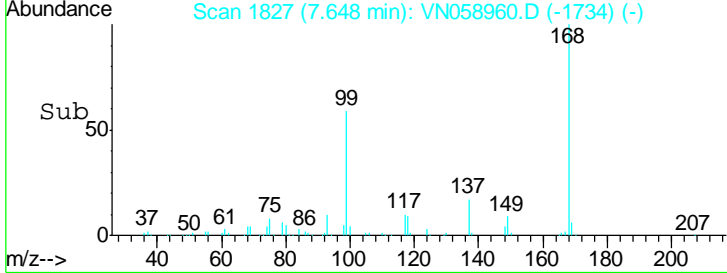
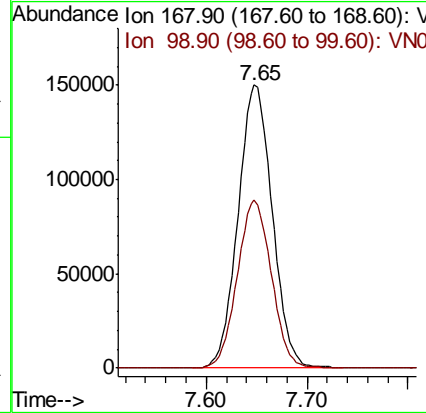
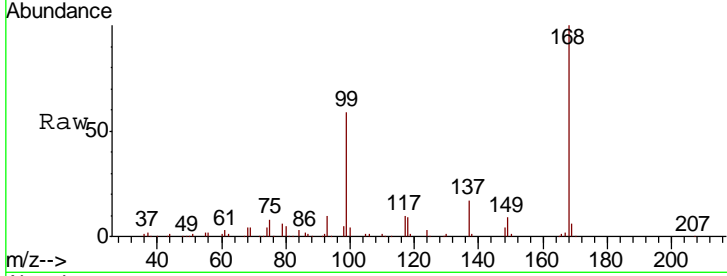




#1
 Pentafluorobenzene
 Concen: 50.000 ug/l
 RT: 7.65 min Scan# 1827
 Delta R.T. 0.00 min
 Lab File: VN058960.D
 Acq: 24 Oct 2019 14:50

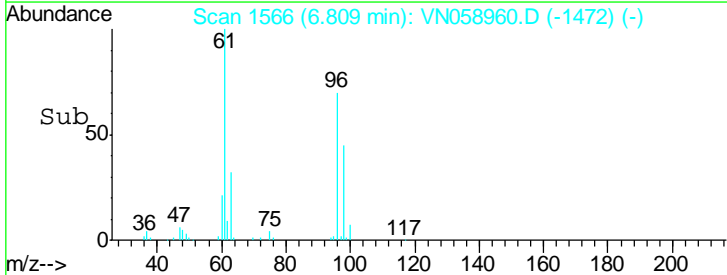
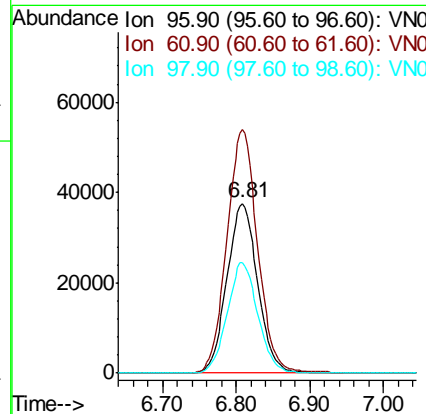
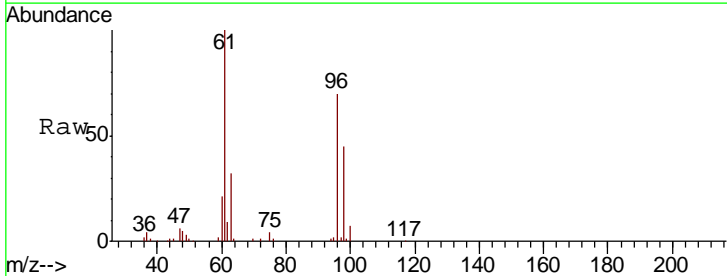
Instrument :
 MSVOA_N
 ClientSampleID :
 KY038PS027-191021RE

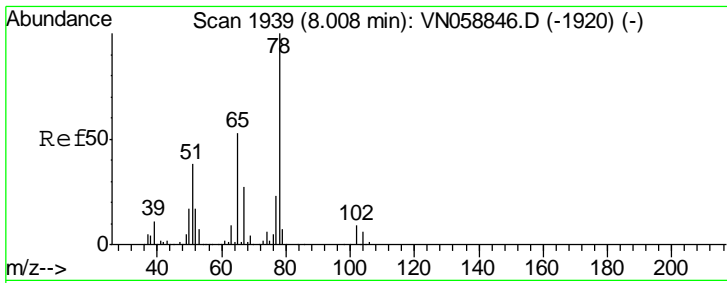
Tgt Ion	Resp	Lower	Upper
168	100		
99	59.3	48.1	72.1



#27
 cis-1,2-Dichloroethene
 Concen: 24.832 ug/l
 RT: 6.81 min Scan# 1566
 Delta R.T. 0.00 min
 Lab File: VN058960.D
 Acq: 24 Oct 2019 14:50

Tgt Ion	Resp	Lower	Upper
96	100		
61	142.9	0.0	325.0
98	64.4	0.0	128.0

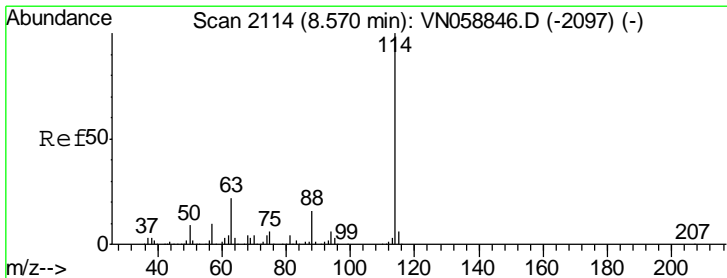
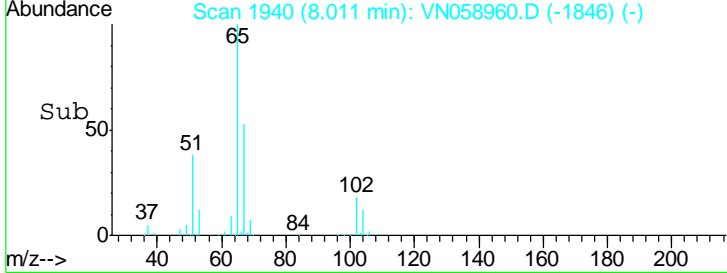
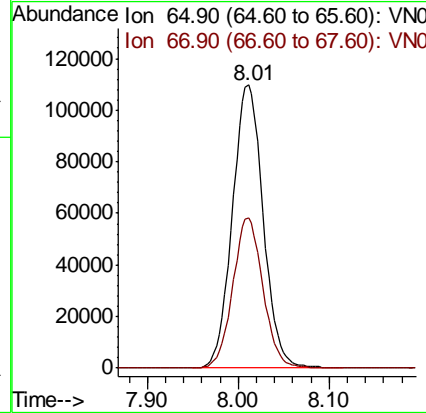
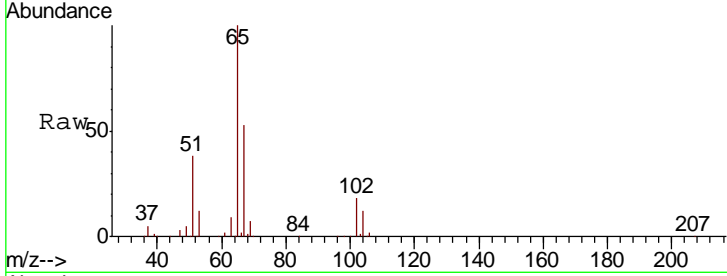




#33
 1,2-Dichloroethane-d4
 Concen: 49.870 ug/l
 RT: 8.01 min Scan# 1940
 Delta R.T. 0.00 min
 Lab File: VN058960.D
 Acq: 24 Oct 2019 14:50

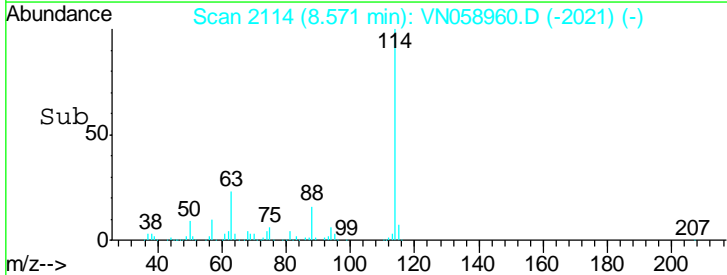
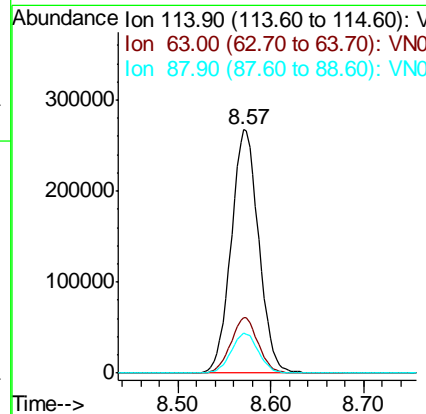
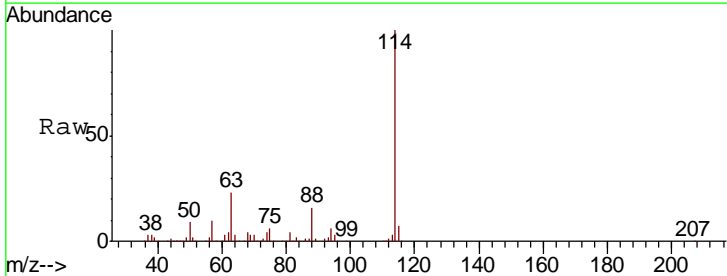
Instrument :
 MSVOA_N
 ClientSampleId :
 KY038PS027-191021RE

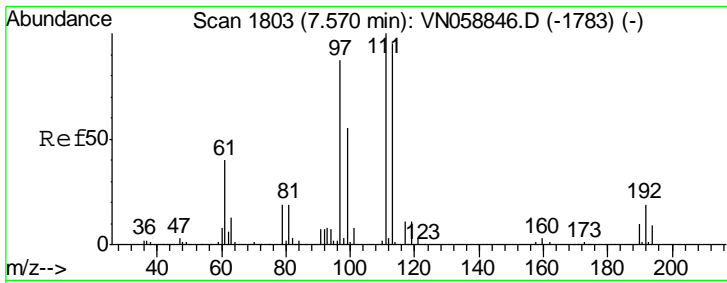
Tgt Ion	Resp	Lower	Upper
65	100		
67	52.0	0.0	103.2



#34
 1,4-Difluorobenzene
 Concen: 50.000 ug/l
 RT: 8.57 min Scan# 2114
 Delta R.T. 0.00 min
 Lab File: VN058960.D
 Acq: 24 Oct 2019 14:50

Tgt Ion	Resp	Lower	Upper
114	100		
63	23.0	0.0	44.4
88	16.4	0.0	31.4

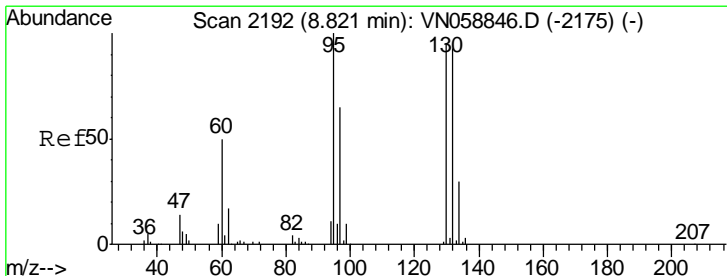
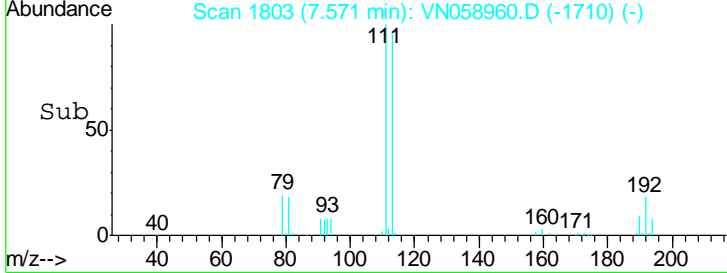
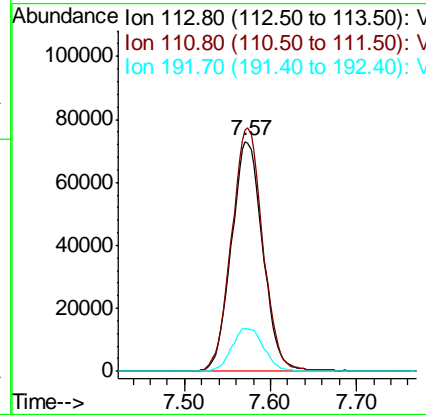
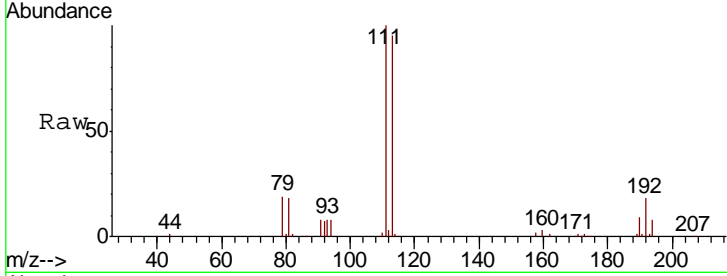




#35
 Dibromofluoromethane
 Concen: 51.071 ug/l
 RT: 7.57 min Scan# 1803
 Delta R.T. 0.00 min
 Lab File: VN058960.D
 Acq: 24 Oct 2019 14:50

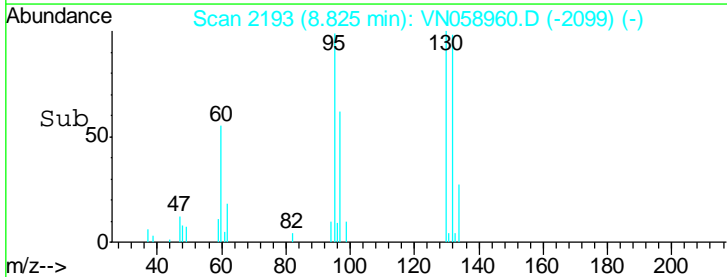
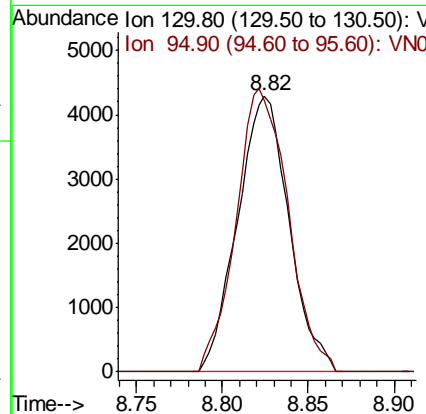
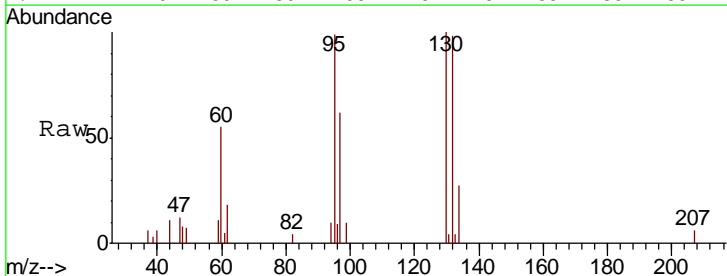
Instrument : MSVOA_N
 ClientSampleId : KY038PS027-191021RE

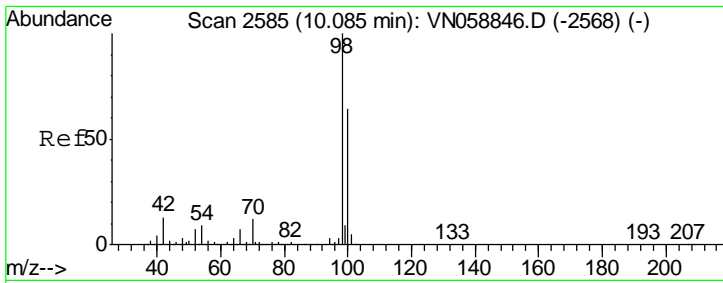
Tgt Ion	Resp	Lower	Upper
113	185121		
111	105.8	82.0	123.0
192	19.1	15.0	22.6



#44
 Trichloroethene
 Concen: 2.214 ug/l
 RT: 8.82 min Scan# 2193
 Delta R.T. 0.00 min
 Lab File: VN058960.D
 Acq: 24 Oct 2019 14:50

Tgt Ion	Resp	Lower	Upper
130	8938		
95	98.5	0.0	209.6

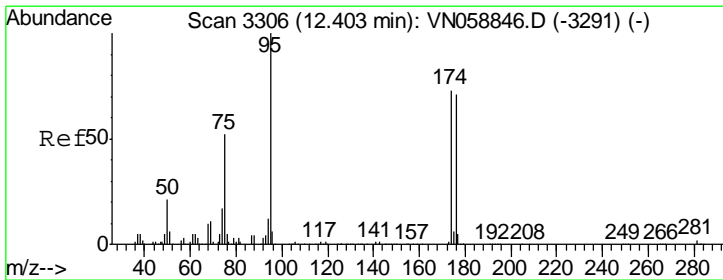
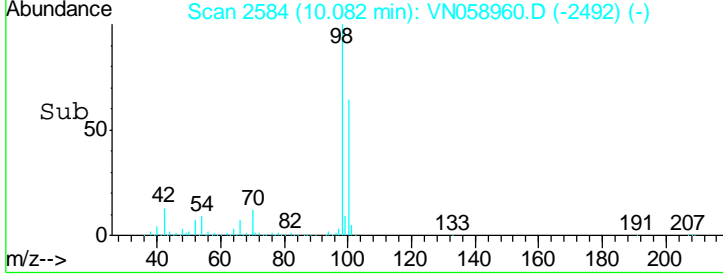
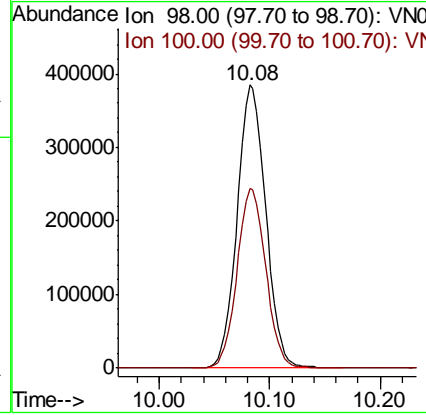
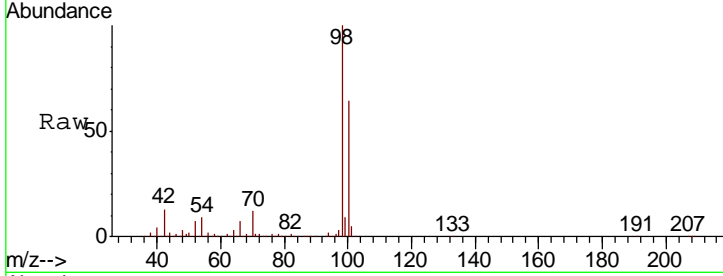




#50
 Toluene-d8
 Concen: 49.244 ug/l
 RT: 10.08 min Scan# 2584
 Delta R.T. -0.00 min
 Lab File: VN058960.D
 Acq: 24 Oct 2019 14:50

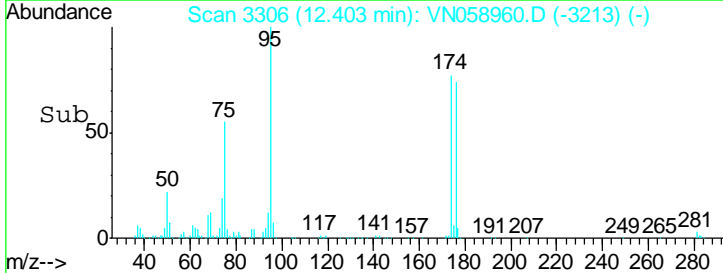
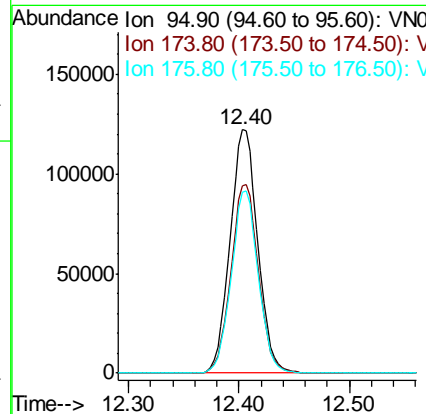
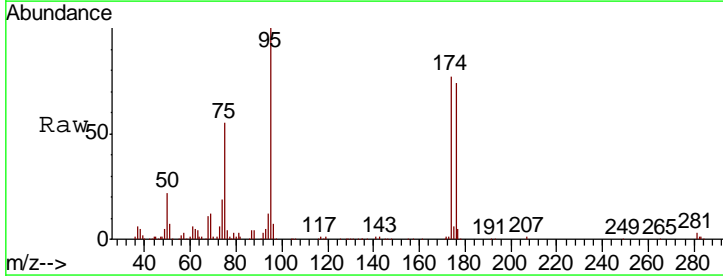
Instrument : MSVOA_N
 ClientSampled : KY038PS027-191021RE

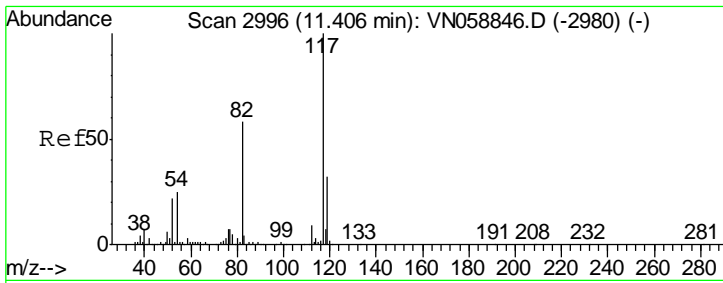
Tgt Ion	Resp	Lower	Upper
98	100		
100	63.9	51.4	77.2



#62
 4-Bromofluorobenzene
 Concen: 41.097 ug/l
 RT: 12.40 min Scan# 3306
 Delta R.T. 0.00 min
 Lab File: VN058960.D
 Acq: 24 Oct 2019 14:50

Tgt Ion	Resp	Lower	Upper
95	100		
174	77.0	0.0	147.6
176	73.0	0.0	143.2

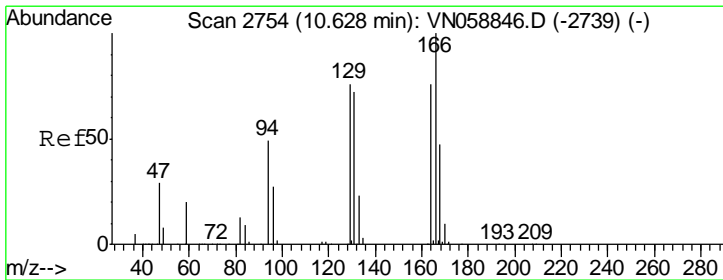
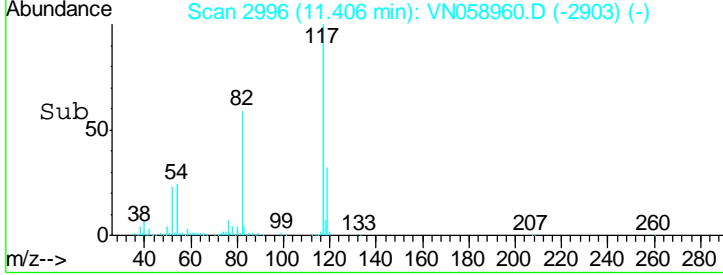
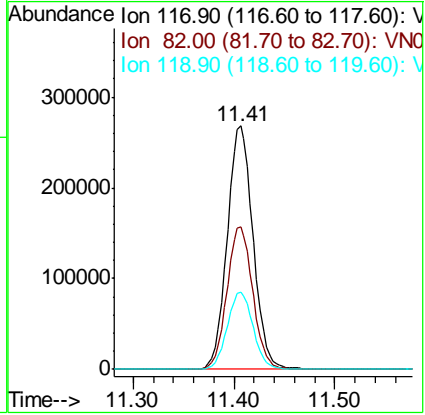
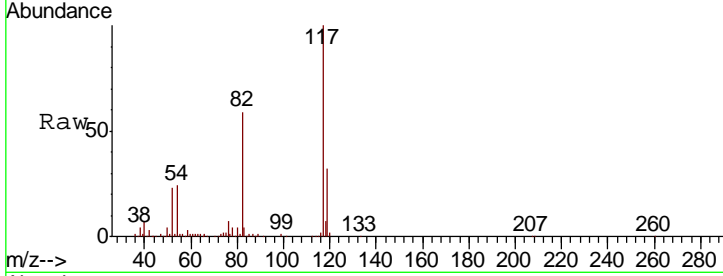




#63
 Chlorobenzene-d5
 Concen: 50.000 ug/l
 RT: 11.41 min Scan# 2996
 Delta R.T. 0.00 min
 Lab File: VN058960.D
 Acq: 24 Oct 2019 14:50

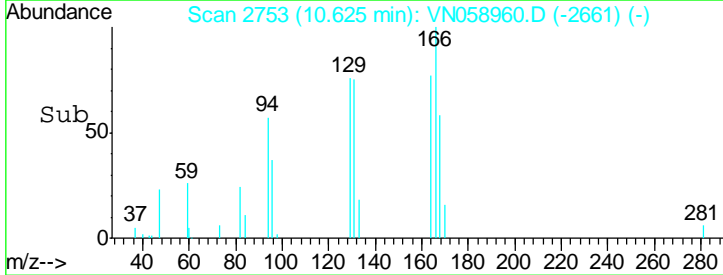
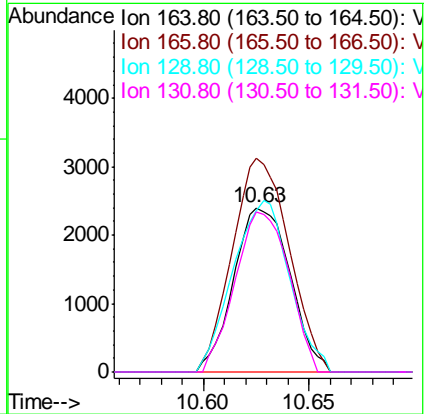
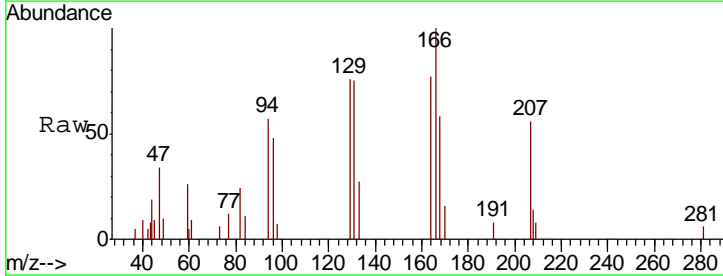
Instrument : MSVOA_N
 ClientSampleId : KY038PS027-191021RE

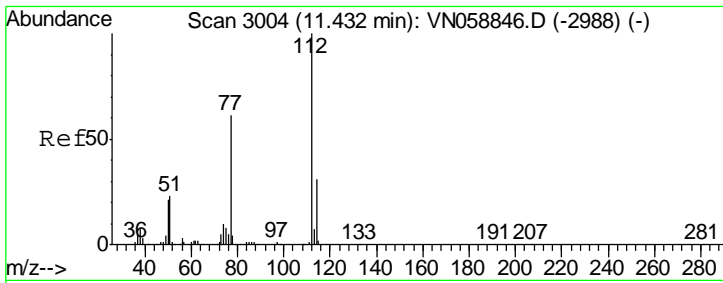
Tgt Ion	Resp	Lower	Upper
117	479063		
82	58.7	46.6	69.8
119	32.0	25.6	38.4



#64
 Tetrachloroethene
 Concen: 1.332 ug/l
 RT: 10.63 min Scan# 2753
 Delta R.T. -0.00 min
 Lab File: VN058960.D
 Acq: 24 Oct 2019 14:50

Tgt Ion	Resp	Lower	Upper
164	4469		
166	130.4	104.8	157.2
129	98.6	79.3	118.9
131	97.4	75.8	113.6

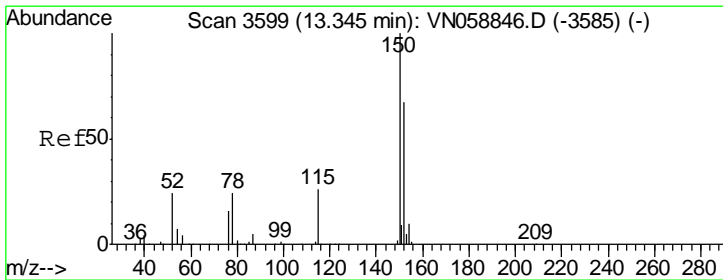
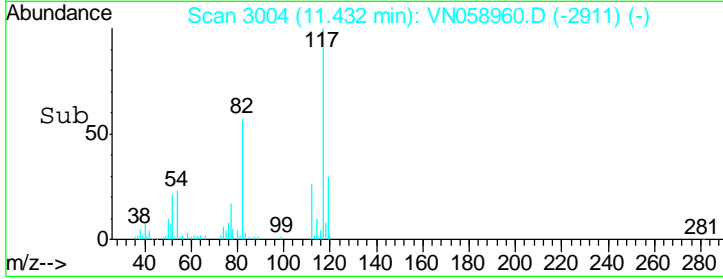
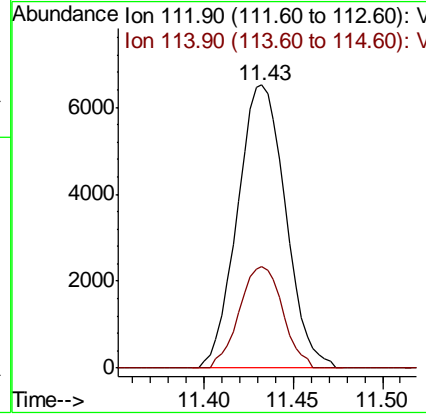
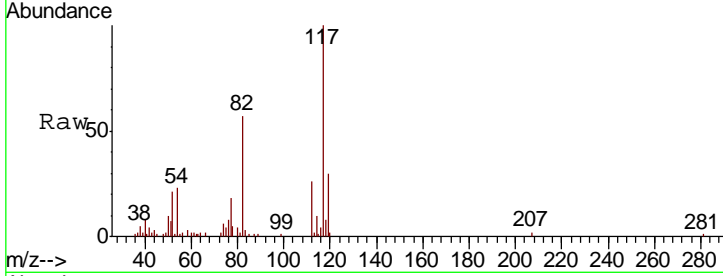




#65
 Chlorobenzene
 Concen: 1.253 ug/l
 RT: 11.43 min Scan# 3004
 Delta R.T. 0.00 min
 Lab File: VN058960.D
 Acq: 24 Oct 2019 14:50

Instrument : MSVOA_N
 ClientSampled : KY038PS027-191021RE

Tgt Ion	Resp	Lower	Upper
112	12224		
114	35.9	25.1	37.7



#72
 1,4-Dichlorobenzene-d4
 Concen: 50.000 ug/l
 RT: 13.35 min Scan# 3600
 Delta R.T. 0.00 min
 Lab File: VN058960.D
 Acq: 24 Oct 2019 14:50

Tgt Ion	Resp	Lower	Upper
152	166017		
115	59.9	30.5	91.5
150	157.5	0.0	344.4

