

Data Path : Z:\voasrv\HPCHEM1\MSVOA_N\Data\VN102523\
 Data File : VN079686.D
 Acq On : 25 Oct 2023 17:01
 Operator : JC\MD
 Sample : 05054-04 10X
 Misc : 5.0mL/MSVOA_N/WATER
 ALS Vial : 17 Sample Multiplier: 1

Instrument :
 MSVOA_N
 ClientSampleId :
 14B-4

Integration Parameters: RTEINT3.P
 Integrator: RTE
 Smoothing : OFF Filtering: 5
 Sampling : 1 Min Area: 0 % of largest Peak
 Start Thrs: 0.2 Max Peaks: 100
 Stop Thrs : 0 Peak Location: TOP

If leading or trailing edge < 100 prefer < Baseline drop else tangent >
 Peak separation: 5

Method : Z:\voasrv\HPCHEM1\MSVOA_N\methods\624N101723W.M
 Title : METHOD 624 VOLATILE ORGANIC ANALYSIS

Signal : TIC: VN079686.D\data.ms

peak #	R.T. min	first scan	max scan	last scan	PK TY	peak height	corr. area	corr. % max.	% of total
1	2.289	52	57	62	rBV3	5030	10941	2.50%	0.604%
2	2.812	141	146	154	rVB4	11439	25629	5.86%	1.414%
3	5.283	559	566	572	rBV5	3316	8787	2.01%	0.485%
4	7.818	989	997	1007	rBV3	54193	135779	31.03%	7.490%
5	8.583	1119	1127	1137	rBV	97534	214821	49.09%	11.851%
6	9.106	1208	1216	1227	rBV	135195	279081	63.78%	15.396%
7	10.571	1457	1465	1477	rBV	228406	437589	100.00%	24.140%
8	11.871	1678	1686	1698	rVB	223420	416178	95.11%	22.959%
9	12.853	1846	1853	1861	rBV	153806	283894	64.88%	15.661%

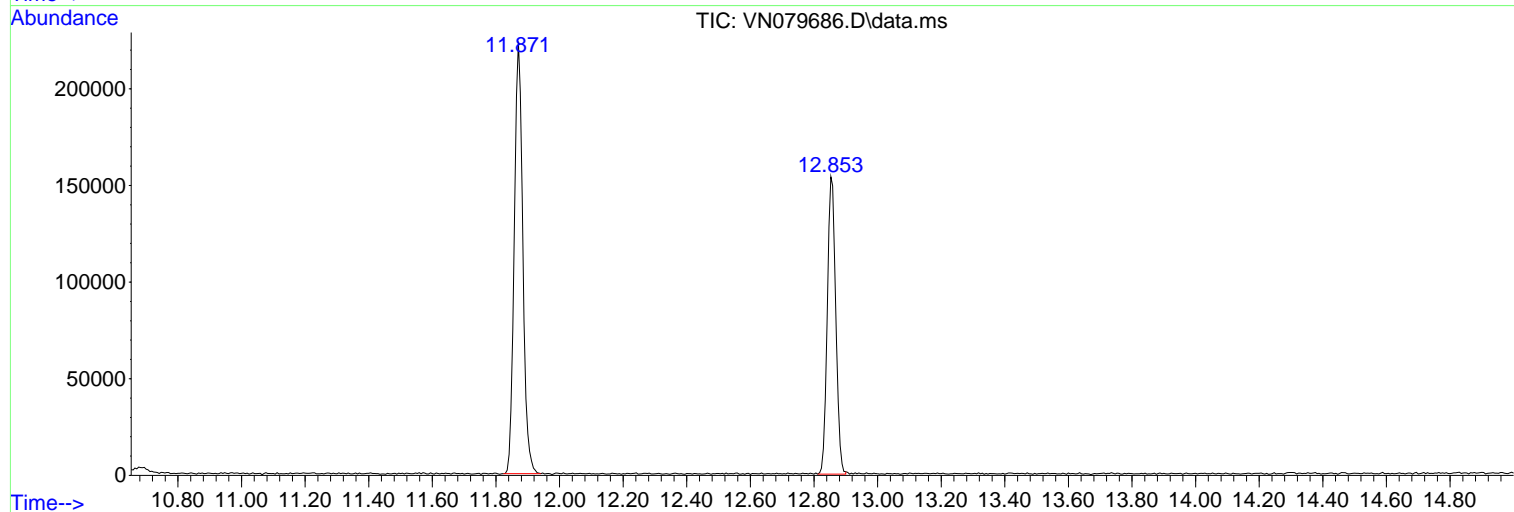
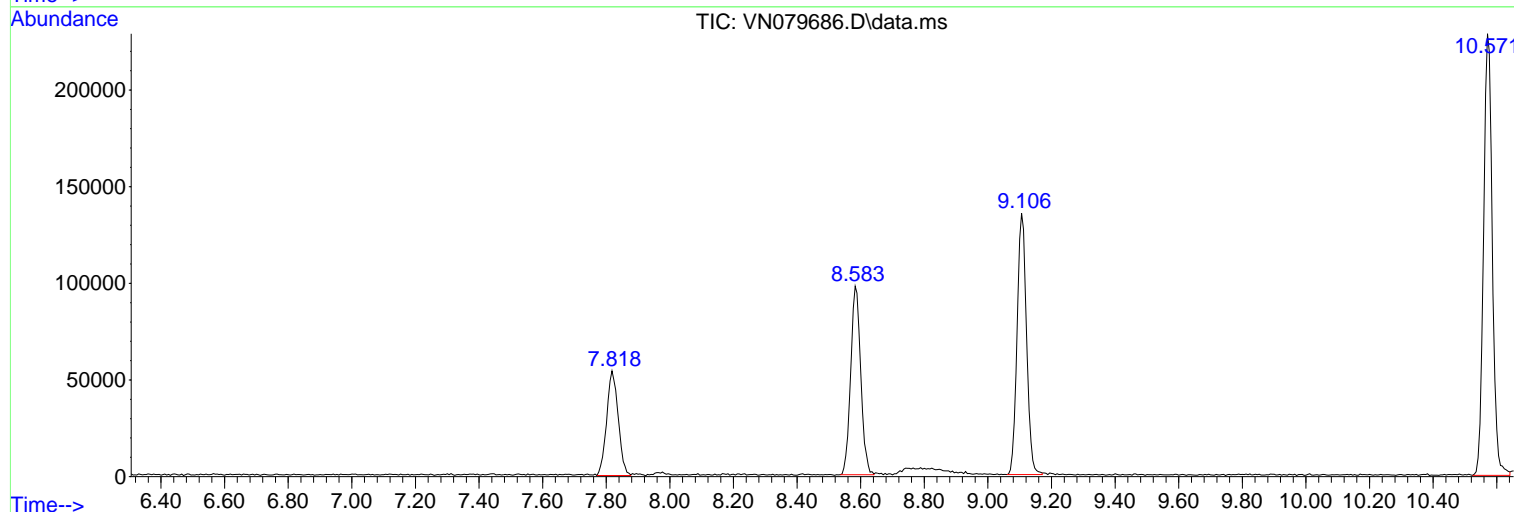
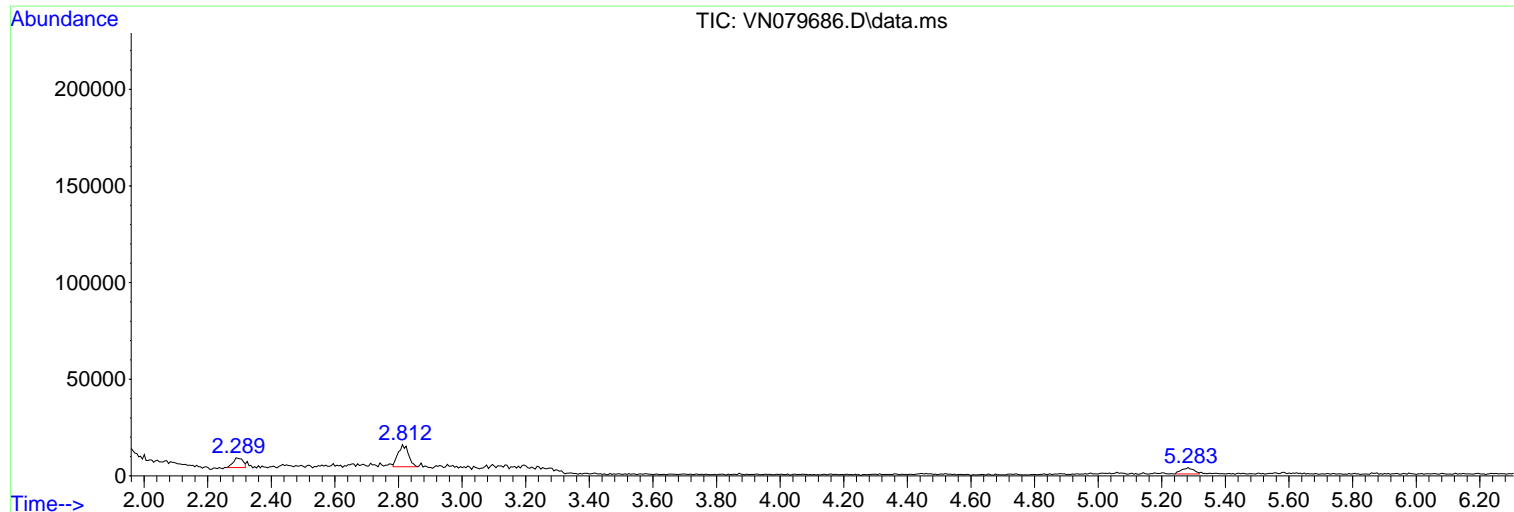
Sum of corrected areas: 1812699

Data Path : Z:\voasrv\HPCHEM1\MSVOA_N\Data\VN102523\
Data File : VN079686.D
Acq On : 25 Oct 2023 17:01
Operator : JC\MD
Sample : 05054-04 10X
Misc : 5.0mL/MSVOA_N/WATER
ALS Vial : 17 Sample Multiplier: 1

Instrument :
MSVOA_N
ClientSampleId :
14B-4

Quant Method : Z:\voasrv\HPCHEM1\MSVOA_N\methods\624N101723W.M
Quant Title : METHOD 624 VOLATILE ORGANIC ANALYSIS

TIC Library : C:\Database\NIST20.L
TIC Integration Parameters: LSCINT.P



Data Path : Z:\voasrv\HPCHEM1\MSVOA_N\Data\VN102523\
 Data File : VN079686.D
 Acq On : 25 Oct 2023 17:01
 Operator : JC\MD
 Sample : 05054-04 10X
 Misc : 5.0mL/MSVOA_N/WATER
 ALS Vial : 17 Sample Multiplier: 1

Instrument :
 MSVOA_N
 ClientSampleId :
 14B-4

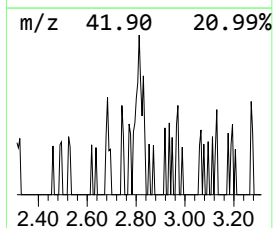
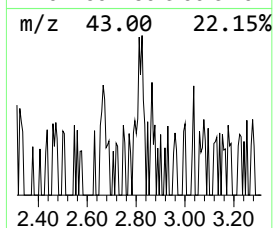
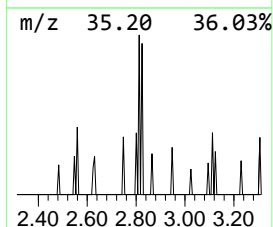
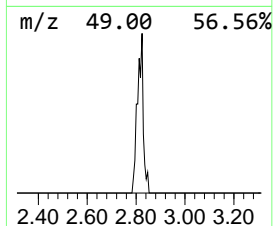
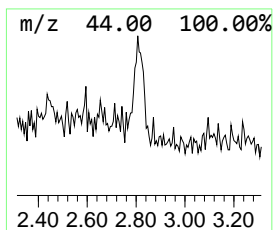
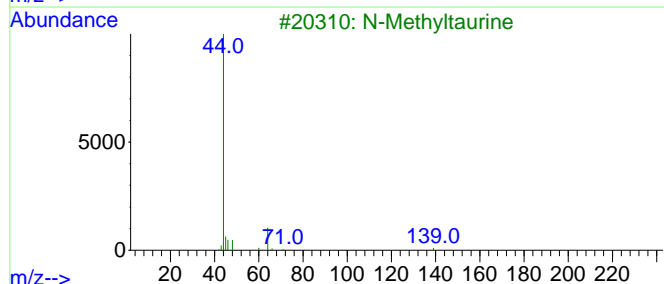
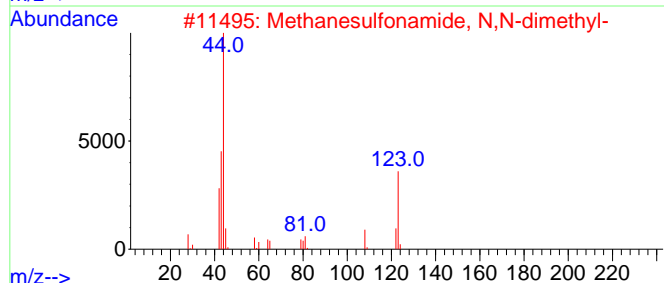
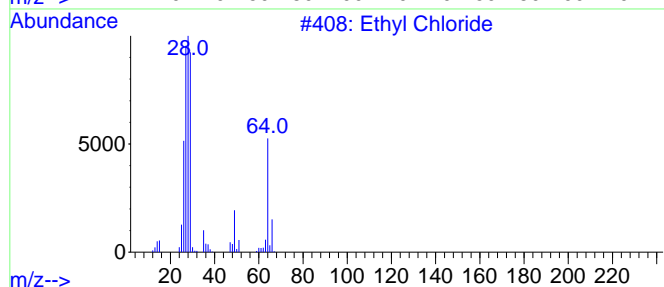
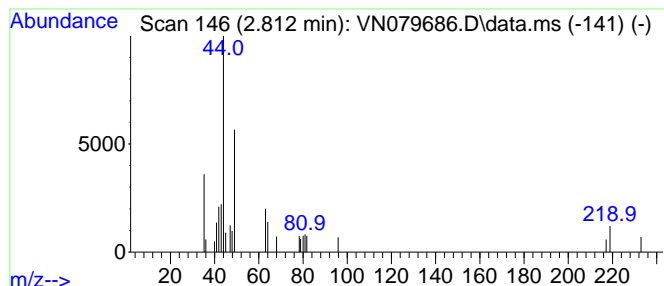
Quant Method : Z:\voasrv\HPCHEM1\MSVOA_N\methods\624N101723W.M
 Quant Title : METHOD 624 VOLATILE ORGANIC ANALYSIS

TIC Library : C:\Database\NIST0.L
 TIC Integration Parameters: LSCINT.P

 Peak Number 1 unknown2.812 Concentration Rank 1

R.T.	EstConc	Area	Relative to ISTD	R.T.
2.812	5.66 ug/l	25629	Bromochloromethane	7.824

Hit#	of	5	Tentative ID	MW	MolForm	CAS#	Qual
1			Ethyl Chloride	64	C2H5Cl	000075-00-3	43
2			Methanesulfonamide, N,N-dimethyl-	123	C3H9NO2S	000918-05-8	9
3			N-Methyltaurine	139	C3H9NO3S	000107-68-6	9
4			8-Azabicyclo[4.3.1]decan-10-one, ...	167	C10H17NO	004146-36-5	9
5			Taurolidine	284	C7H16N4O4S2	019388-87-5	9



Data Path : Z:\voasrv\HPCHEM1\MSVOA_N\Data\VN102523\
Data File : VN079686.D
Acq On : 25 Oct 2023 17:01
Operator : JC\MD
Sample : 05054-04 10X
Misc : 5.0mL/MSVOA_N/WATER
ALS Vial : 17 Sample Multiplier: 1

Instrument :
MSVOA_N
ClientSampleId :
14B-4

Quant Method : Z:\voasrv\HPCHEM1\MSVOA_N\methods\624N101723W.M
Quant Title : METHOD 624 VOLATILE ORGANIC ANALYSIS

TIC Library : C:\Database\NIST0.L
TIC Integration Parameters: LSCINT.P

TIC Top Hit name	RT	EstConc	Units	Response	--Internal Standard--			
					#	RT	Resp	Conc
unknown2.812	2.812	5.7	ug/l	25629	1	7.824	135779	30.0