

Data Path : Z:\VOASRV\HPCHEM1\MSVOA N\DATA\VN102619\
 Data File : VN058976.D
 Acq On : 25 Oct 2019 11:04
 Operator : JC/SP
 Sample : K5542-21
 Misc : 5.00mL/MSVOA N/WATER
 ALS Vial : 8 Sample Multiplier: 1

Instrument :
 MSVOA_N
 ClientSampleId :

Quant Time: Oct 25 23:02:44 2019
 Quant Method : Z:\VOASRV\HPCHEM1\MSVOA_N\METHODS\82N101819W.M
 Quant Title : SW846 8260
 QLast Update : Sat Oct 19 00:16:20 2019
 Response via : Initial Calibration

Internal Standards	R.T.	QIon	Response	Conc	Units	Dev(Min)
1) Pentafluorobenzene	7.65	168	333726	50.00	ug/l	0.00
34) 1,4-Difluorobenzene	8.57	114	522429	50.00	ug/l	0.00
63) Chlorobenzene-d5	11.41	117	455694	50.00	ug/l	0.00
72) 1,4-Dichlorobenzene-d4	13.35	152	151062	50.00	ug/l	0.00

System Monitoring Compounds

33) 1,2-Dichloroethane-d4	8.01	65	244944	50.04	ug/l	0.00
Spiked Amount	50.000		Recovery	=	100.08%	
35) Dibromofluoromethane	7.57	113	175102	50.98	ug/l	0.00
Spiked Amount	50.000		Recovery	=	101.96%	
50) Toluene-d8	10.08	98	650131	48.76	ug/l	0.00
Spiked Amount	50.000		Recovery	=	97.52%	
62) 4-Bromofluorobenzene	12.40	95	193148	39.45	ug/l	0.00
Spiked Amount	50.000		Recovery	=	78.90%	

Target Compounds

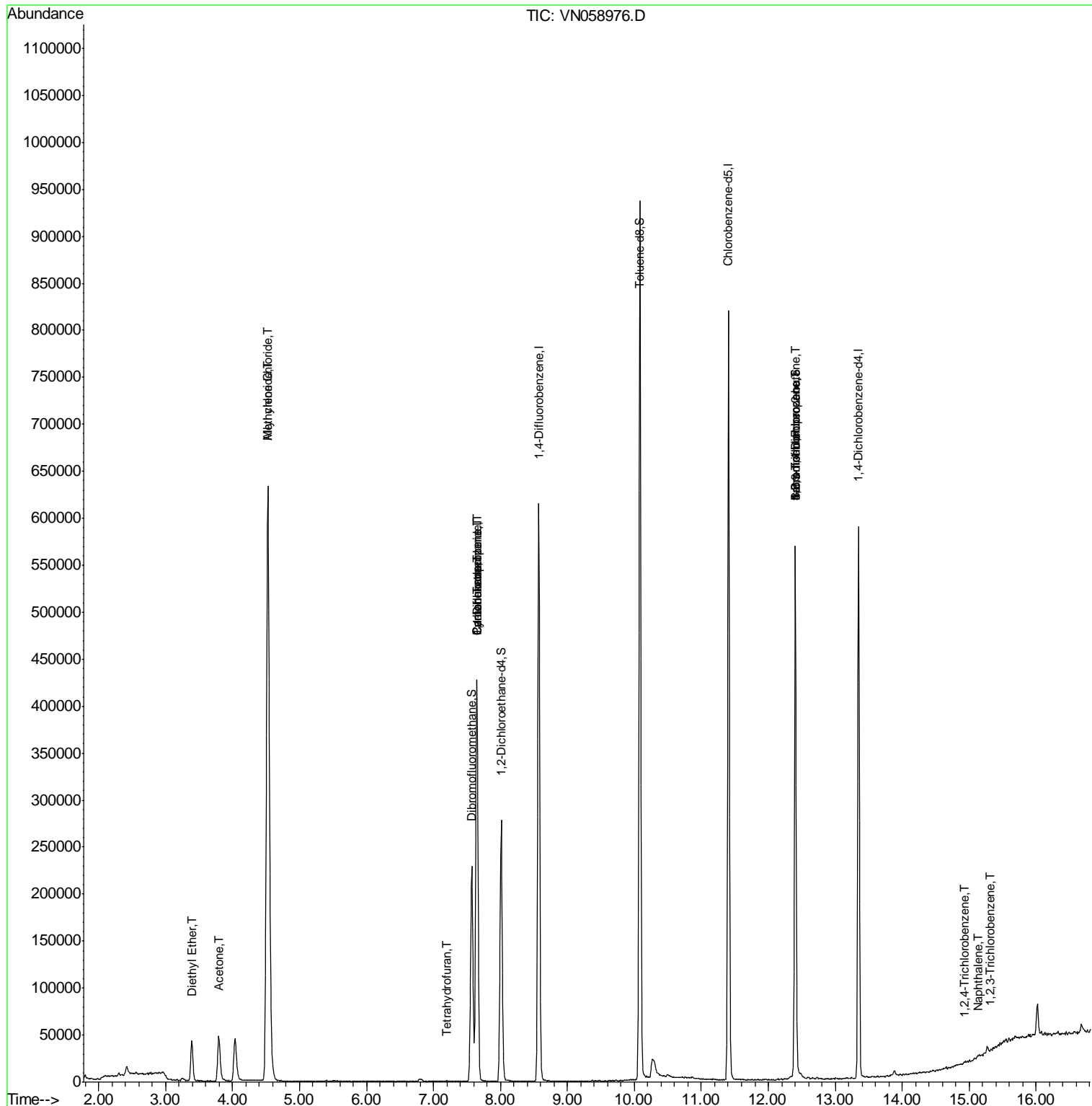
					Qvalue	
8) Diethyl Ether	3.39	74	19268	8.807	ug/l	95
14) Allyl chloride	4.53	41	17641	2.650	ug/l #	25
16) Acetone	3.79	43	81575	33.728	ug/l	100
20) Methylene Chloride	4.53	84	472151	114.326	ug/l	99
29) Tetrahydrofuran	7.20	42	550	0.286	ug/l #	55
31) Cyclohexane	7.65	56	8418	1.197	ug/l #	2
36) 1,1-Dichloropropene	7.64	75	28128	5.259	ug/l #	51
38) Carbon Tetrachloride	7.65	117	33991	6.169	ug/l #	17
71) Bromoform	12.40	173	1224	0.451	ug/l #	1
76) 1,2,3-Trichloropropane	12.40	75	103358	29.522	ug/l #	100
81) trans-1,4-Dichloro-2-buten	12.40	75	103358	76.908	ug/l #	10
93) 1,2,4-Trichlorobenzene	14.92	180	193	2.581	ug/l #	84
95) Naphthalene	15.13	128	1121	2.349	ug/l #	88
96) 1,2,3-Trichlorobenzene	15.30	180	336	2.504	ug/l #	54

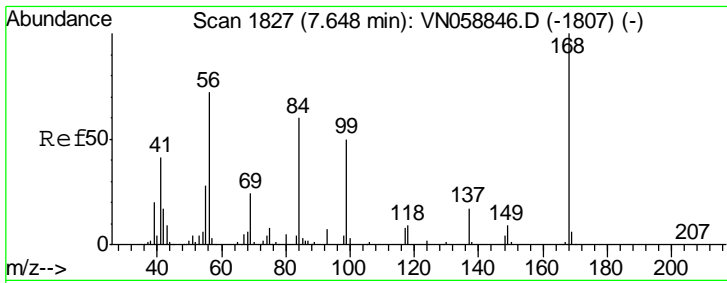
(#) = qualifier out of range (m) = manual integration (+) = signals summed

Data Path : Z:\VOASRV\HPCHEM1\MSVOA N\DATA\VN102619\
 Data File : VN058976.D
 Acq On : 25 Oct 2019 11:04
 Operator : JC/SP
 Sample : K5542-21
 Misc : 5.00mL/MSVOA N/WATER
 ALS Vial : 8 Sample Multiplier: 1

Instrument :
 MSVOA_N
 Client Sampled :

Quant Time: Oct 25 23:02:44 2019
 Quant Method : Z:\VOASRV\HPCHEM1\MSVOA_N\METHODS\82N101819W.M
 Quant Title : SW846 8260
 QLast Update : Sat Oct 19 00:16:20 2019
 Response via : Initial Calibration

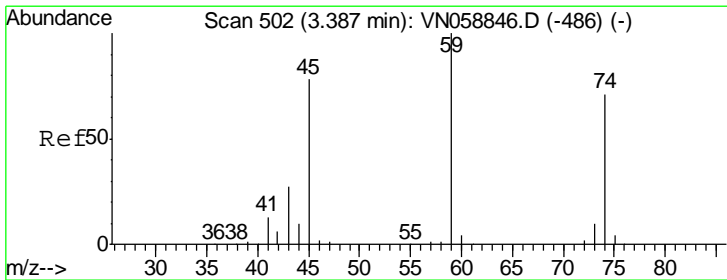
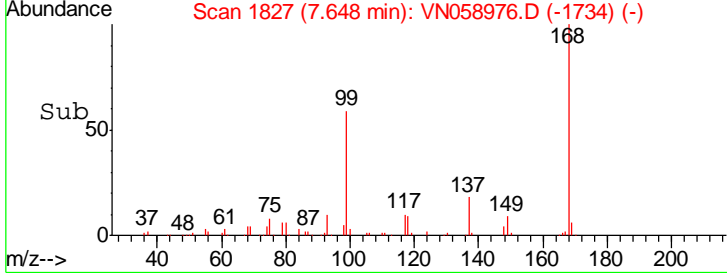
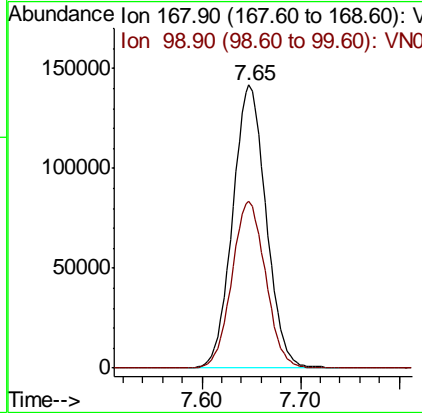
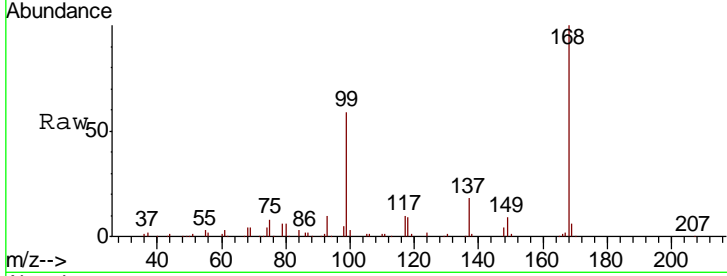




#1
 Pentafluorobenzene
 Concen: 50.000 ug/l
 RT: 7.65 min Scan# 1827
 Delta R.T. 0.00 min
 Lab File: VN058976.D
 Acq: 25 Oct 2019 11:04

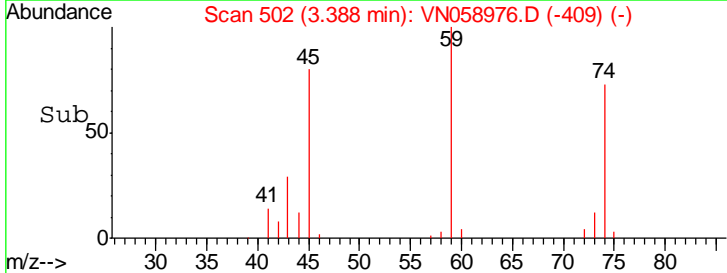
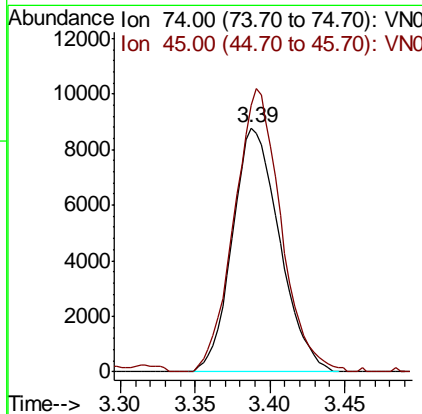
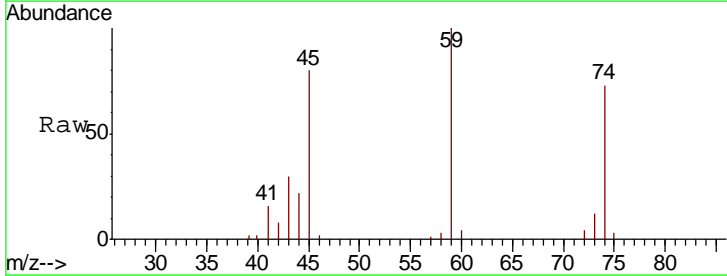
Instrument :
 MSVOA_N
 ClientSampled :

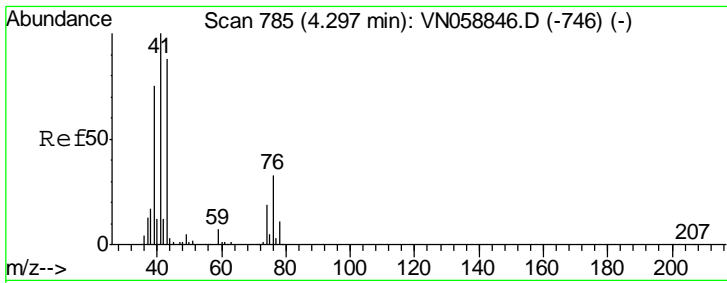
Tgt Ion: 168 Resp: 333726
 Ion Ratio Lower Upper
 168 100
 99 58.9 48.1 72.1



#8
 Diethyl Ether
 Concen: 8.807 ug/l
 RT: 3.39 min Scan# 502
 Delta R.T. 0.00 min
 Lab File: VN058976.D
 Acq: 25 Oct 2019 11:04

Tgt Ion: 74 Resp: 19268
 Ion Ratio Lower Upper
 74 100
 45 114.7 54.9 164.5

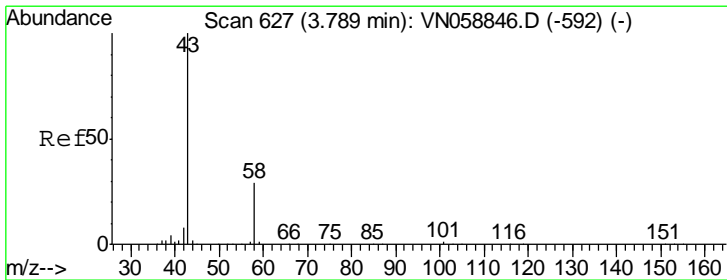
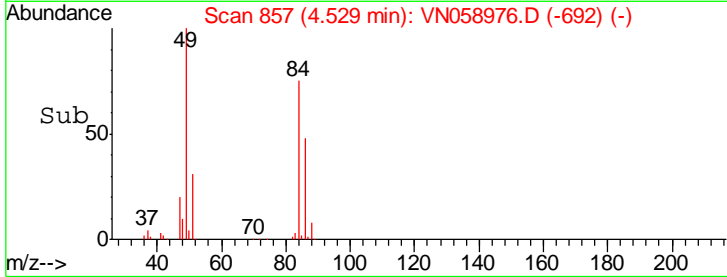
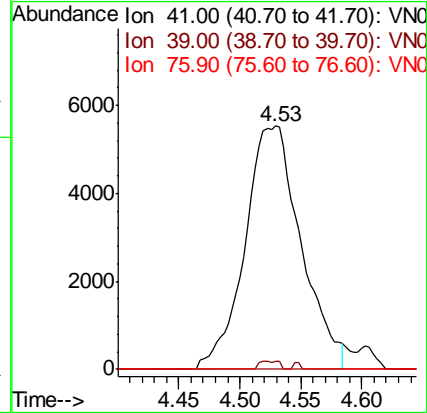
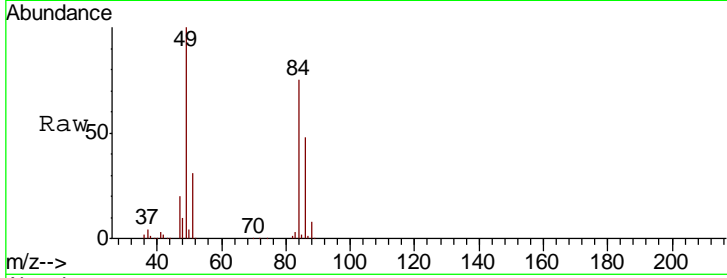




#14
 Allvl chloride
 Concen: 2.650 ug/l
 RT: 4.53 min Scan# 857
 Delta R.T. 0.23 min
 Lab File: VN058976.D
 Acq: 25 Oct 2019 11:04

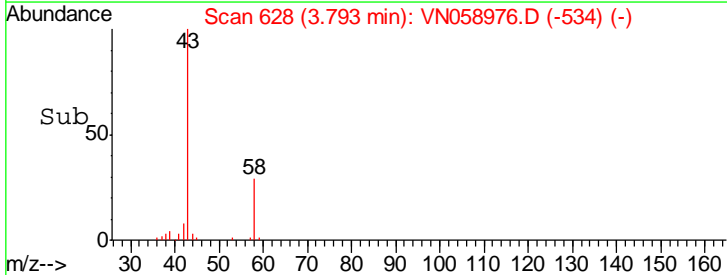
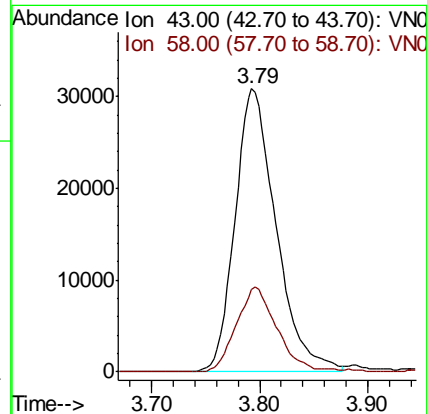
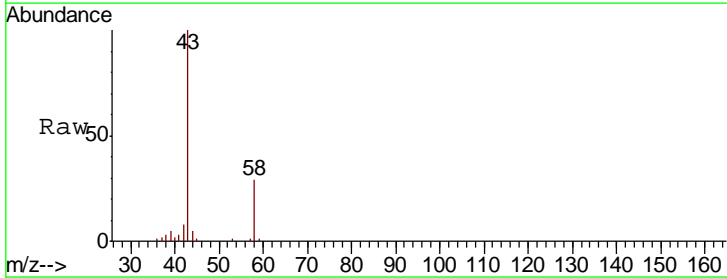
Instrument :
 MSVOA_N
 ClientSampled :

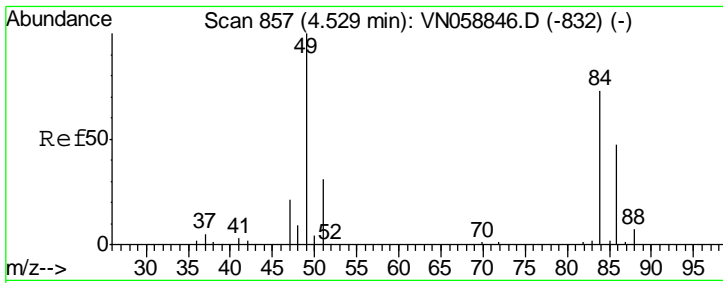
Tgt Ion	Resp	Lower	Upper
41	17641		
39	1.1	55.9	83.9#
76	0.0	24.1	36.1#



#16
 Acetone
 Concen: 33.728 ug/l
 RT: 3.79 min Scan# 628
 Delta R.T. 0.00 min
 Lab File: VN058976.D
 Acq: 25 Oct 2019 11:04

Tgt Ion	Resp	Lower	Upper
43	81575		
58	29.0	23.1	34.7

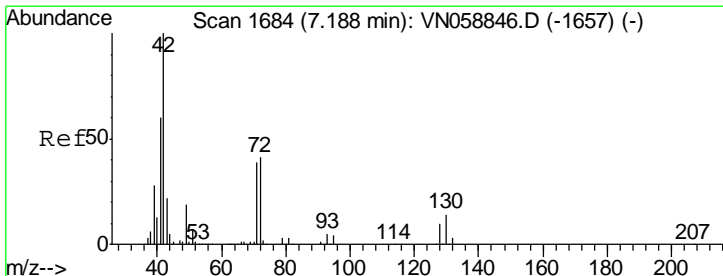
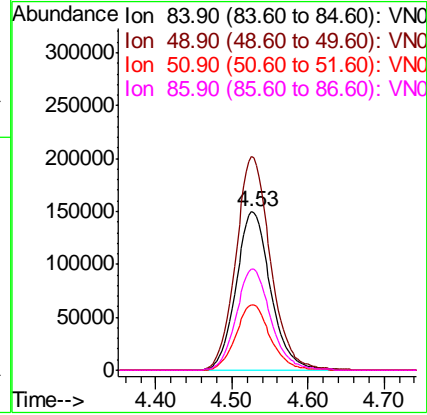
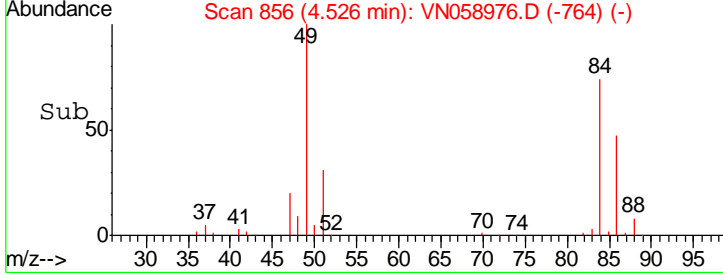
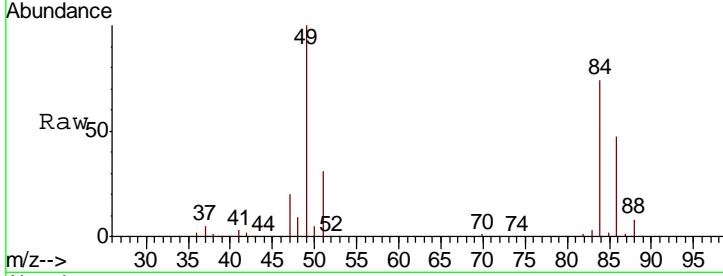




#20
 Methylene Chloride
 Concen: 114.326 ug/l
 RT: 4.53 min Scan# 856
 Delta R.T. -0.00 min
 Lab File: VN058976.D
 Acq: 25 Oct 2019 11:04

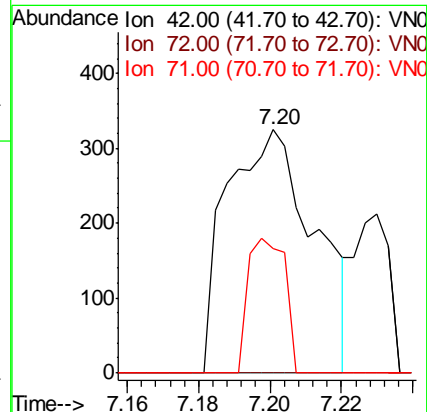
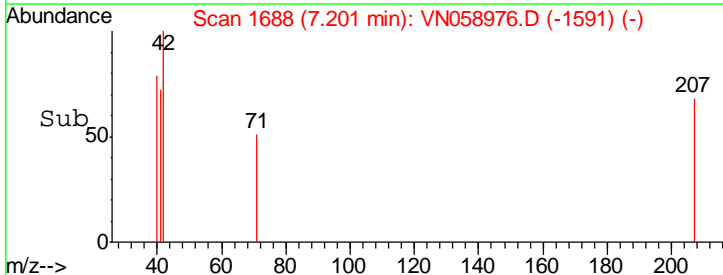
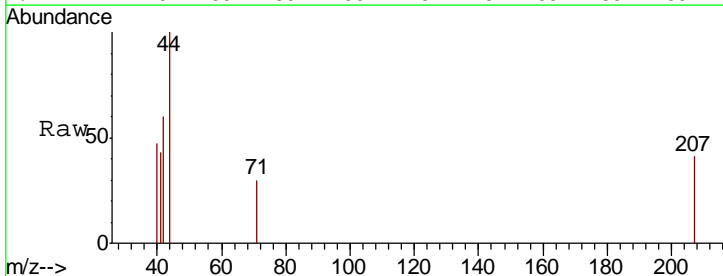
Instrument :
 MSVOA_N
 ClientSampled :

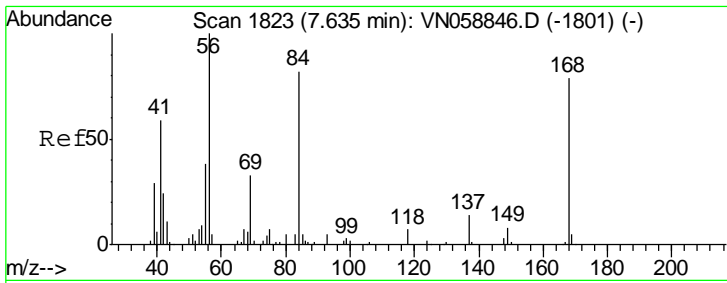
Tgt Ion	Resp	Lower	Upper
84	100		
49	135.0	109.6	164.4
51	41.3	33.8	50.6
86	63.9	51.5	77.3



#29
 Tetrahydrofuran
 Concen: 0.286 ug/l
 RT: 7.20 min Scan# 1688
 Delta R.T. 0.01 min
 Lab File: VN058976.D
 Acq: 25 Oct 2019 11:04

Tgt Ion	Resp	Lower	Upper
42	100		
72	0.0	32.2	48.2#
71	23.5	30.6	45.8#

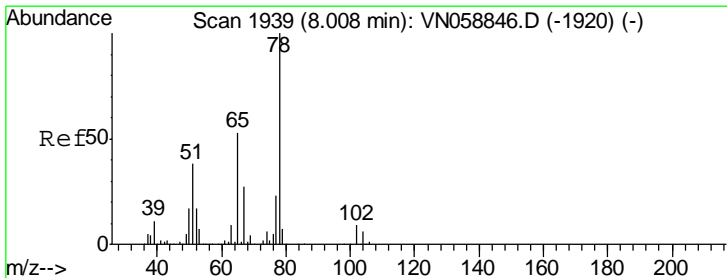
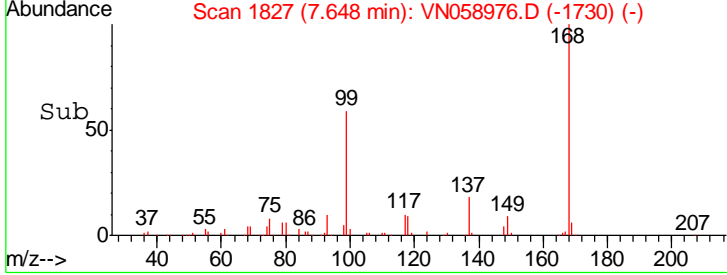
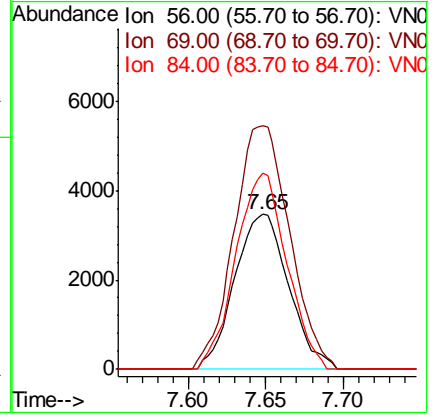
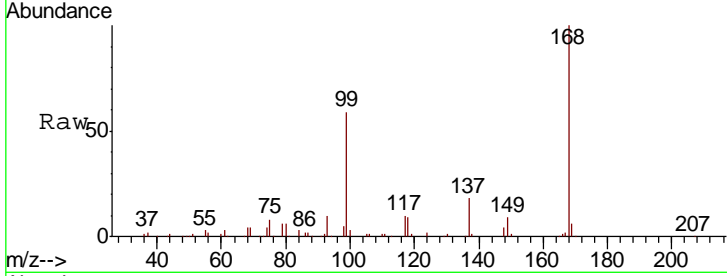




#31
 Cyclohexane
 Concen: 1.197 ug/l
 RT: 7.65 min Scan# 1827
 Delta R.T. 0.01 min
 Lab File: VN058976.D
 Acq: 25 Oct 2019 11:04

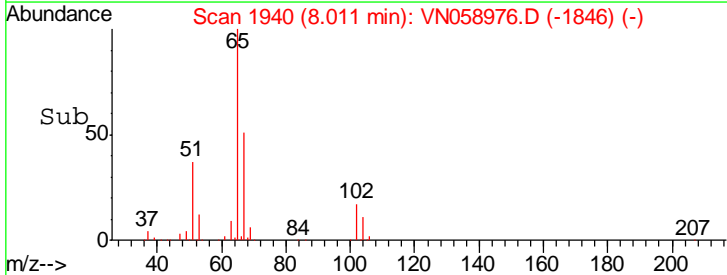
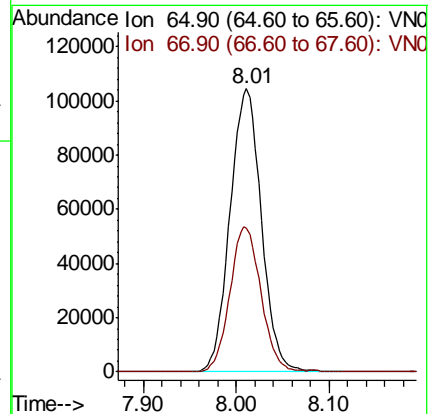
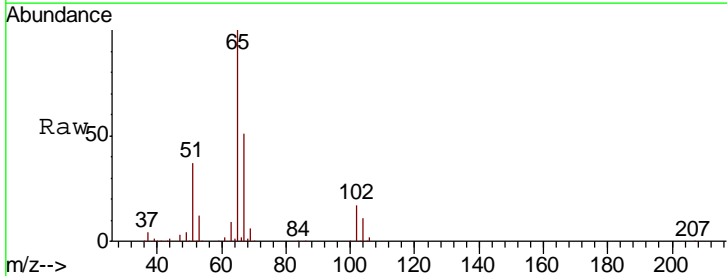
Instrument :
 MSVOA_N
 ClientSampled :

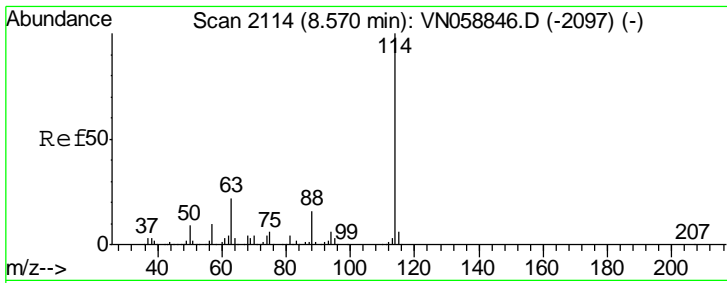
Tgt Ion	Resp	Lower	Upper
56	100		
69	156.9	26.2	39.4#
84	126.1	65.6	98.4#



#33
 1,2-Dichloroethane-d4
 Concen: 50.044 ug/l
 RT: 8.01 min Scan# 1940
 Delta R.T. 0.00 min
 Lab File: VN058976.D
 Acq: 25 Oct 2019 11:04

Tgt Ion	Resp	Lower	Upper
65	100		
67	50.8	0.0	103.2

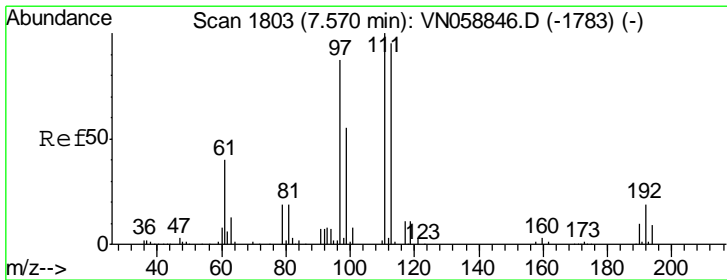
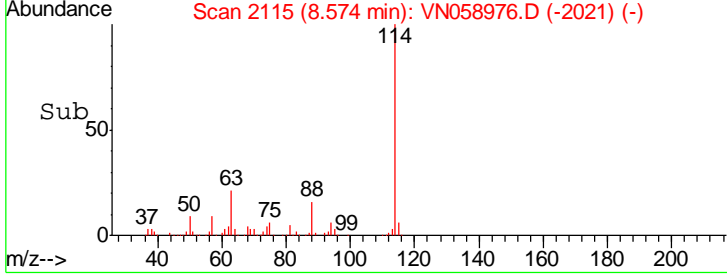
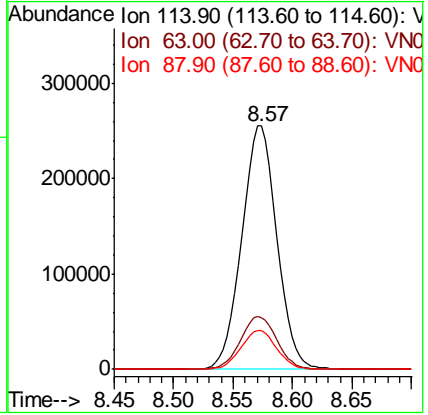
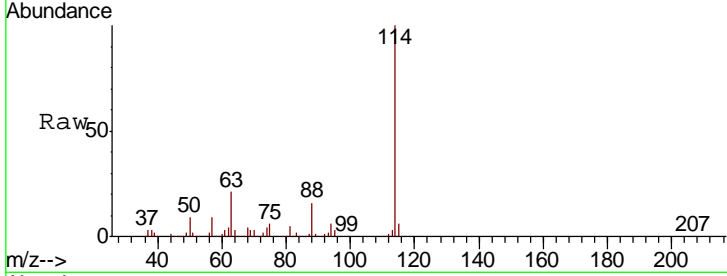




#34
 1,4-Difluorobenzene
 Concen: 50.000 ug/l
 RT: 8.57 min Scan# 2115
 Delta R.T. 0.00 min
 Lab File: VN058976.D
 Acq: 25 Oct 2019 11:04

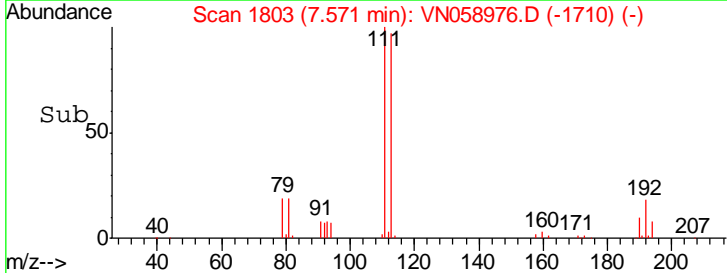
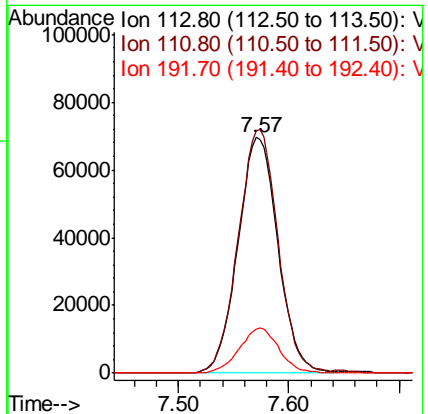
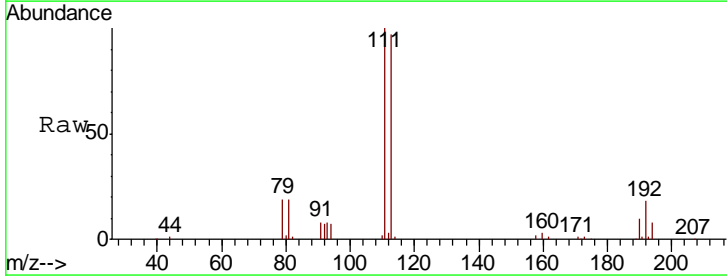
Instrument :
 MSVOA_N
 ClientSampled :

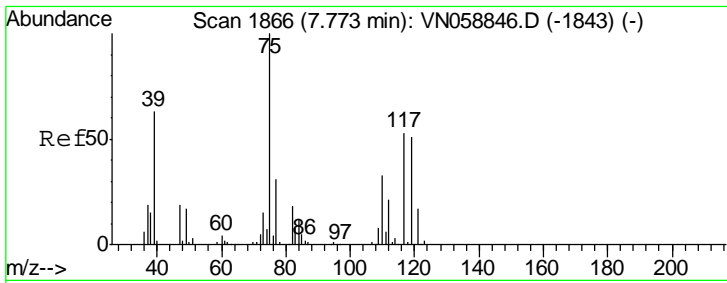
Tgt Ion	Resp	Lower	Upper
114	100		
63	21.4	0.0	44.4
88	15.9	0.0	31.4



#35
 Dibromofluoromethane
 Concen: 50.978 ug/l
 RT: 7.57 min Scan# 1803
 Delta R.T. 0.00 min
 Lab File: VN058976.D
 Acq: 25 Oct 2019 11:04

Tgt Ion	Resp	Lower	Upper
113	100		
111	102.8	82.0	123.0
192	18.9	15.0	22.6

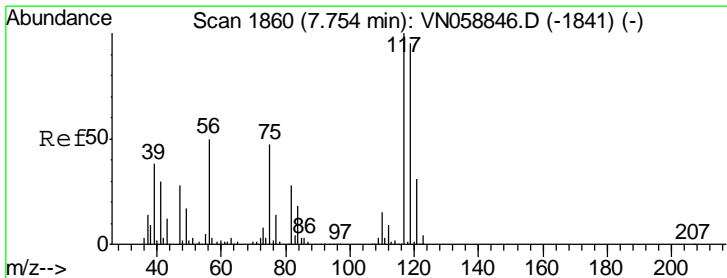
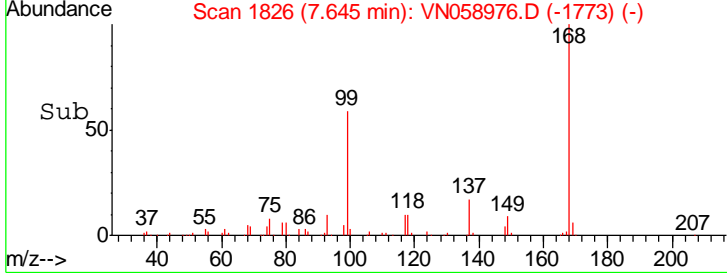
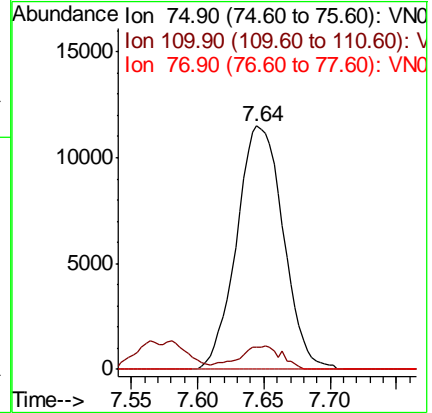
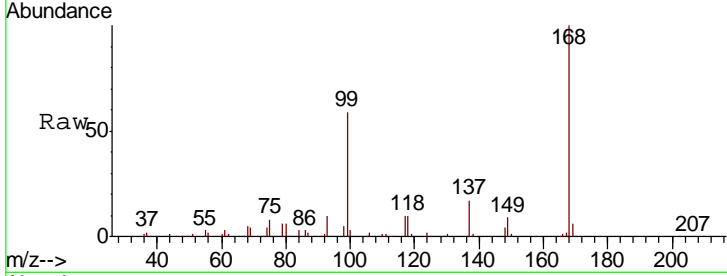




#36
 1,1-Dichloropropene
 Concen: 5.259 ug/l
 RT: 7.64 min Scan# 1826
 Delta R.T. -0.13 min
 Lab File: VN058976.D
 Acq: 25 Oct 2019 11:04

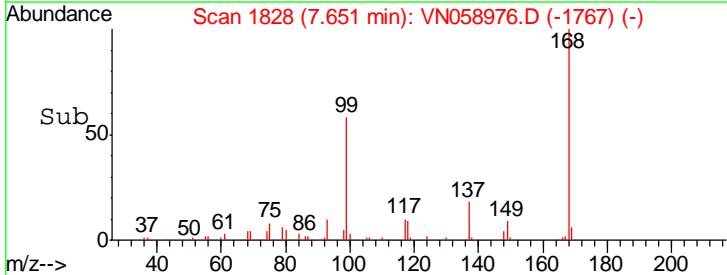
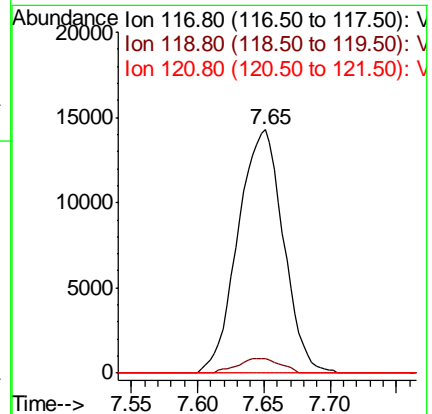
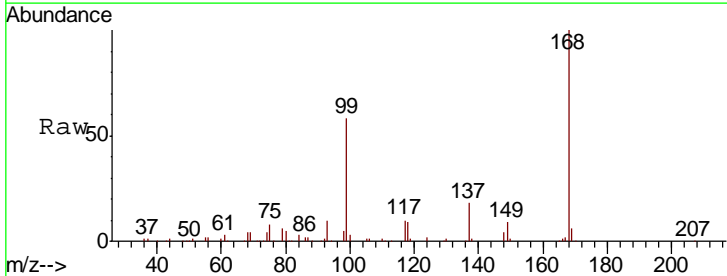
Instrument :
 MSVOA_N
 ClientSampled :

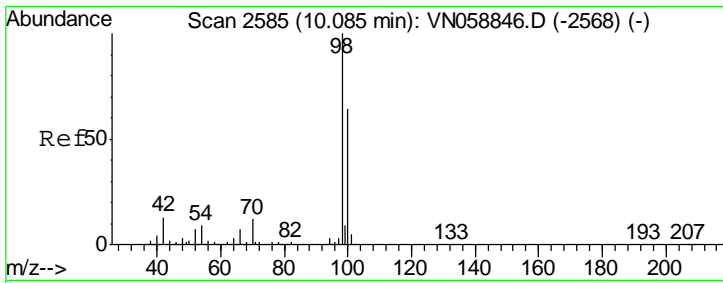
Tgt Ion	Resp	Lower	Upper
75	28128		
75	100		
110	8.9	16.3	48.9#
77	0.0	24.6	36.8#



#38
 Carbon Tetrachloride
 Concen: 6.169 ug/l
 RT: 7.65 min Scan# 1828
 Delta R.T. -0.10 min
 Lab File: VN058976.D
 Acq: 25 Oct 2019 11:04

Tgt Ion	Resp	Lower	Upper
117	33991		
117	100		
119	6.1	75.7	113.5#
121	0.0	25.0	37.6#

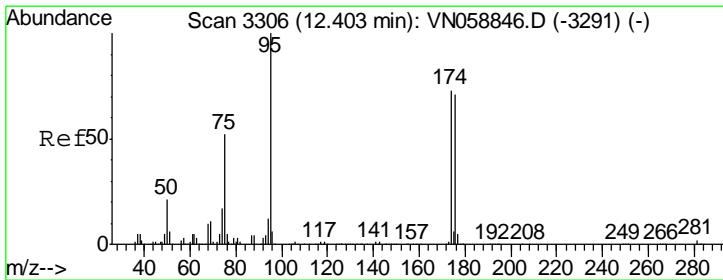
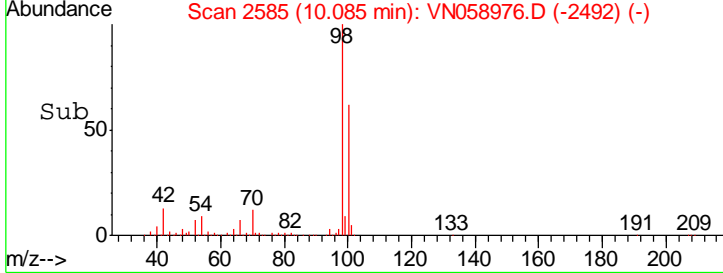
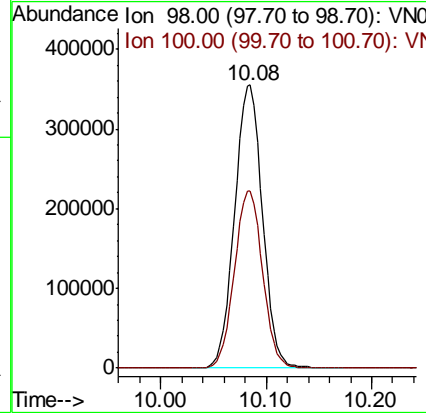
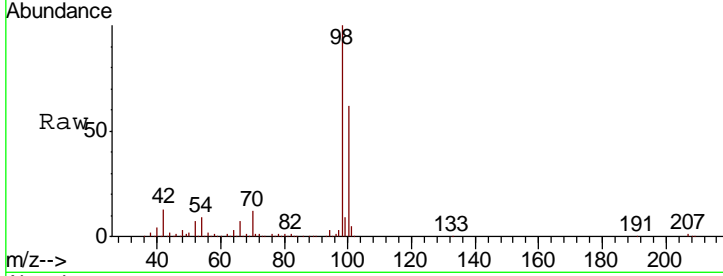




#50
 Toluene-d8
 Concen: 48.759 ug/l
 RT: 10.08 min Scan# 2585
 Delta R.T. 0.00 min
 Lab File: VN058976.D
 Acq: 25 Oct 2019 11:04

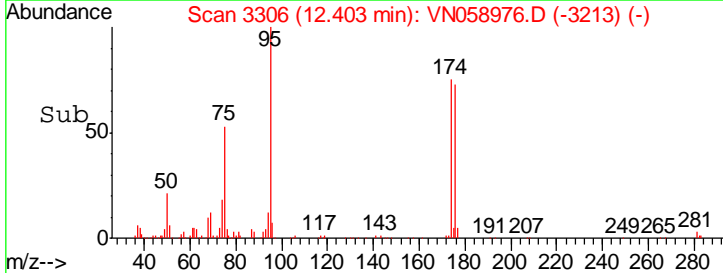
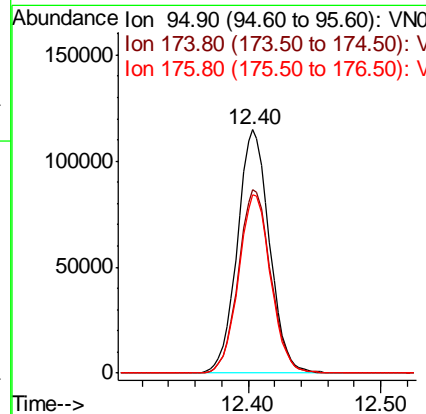
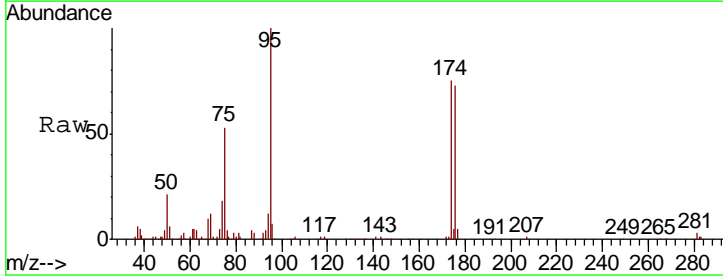
Instrument :
 MSVOA_N
 ClientSampled :

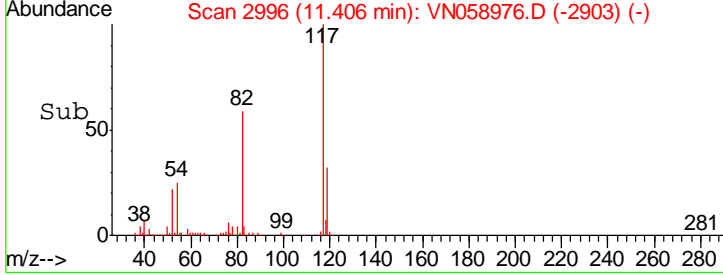
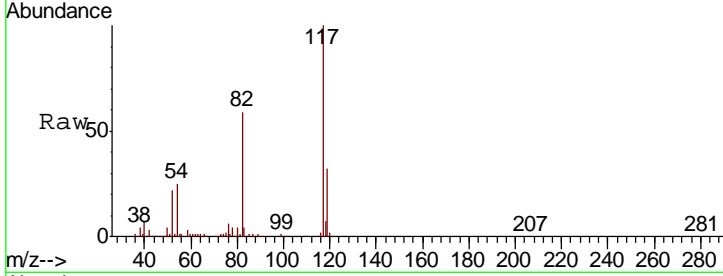
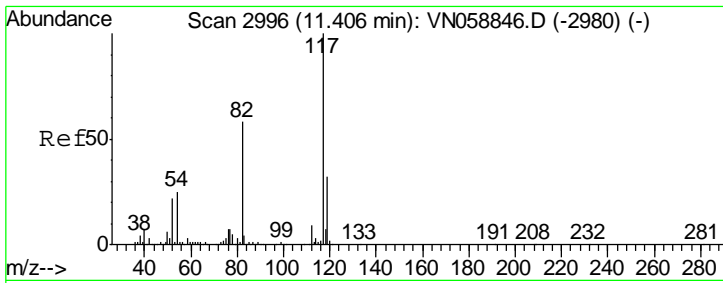
Tgt Ion	Resp	Lower	Upper
98	100		
100	63.2	51.4	77.2



#62
 4-Bromofluorobenzene
 Concen: 39.447 ug/l
 RT: 12.40 min Scan# 3306
 Delta R.T. 0.00 min
 Lab File: VN058976.D
 Acq: 25 Oct 2019 11:04

Tgt Ion	Resp	Lower	Upper
95	100		
174	76.5	0.0	147.6
176	73.6	0.0	143.2

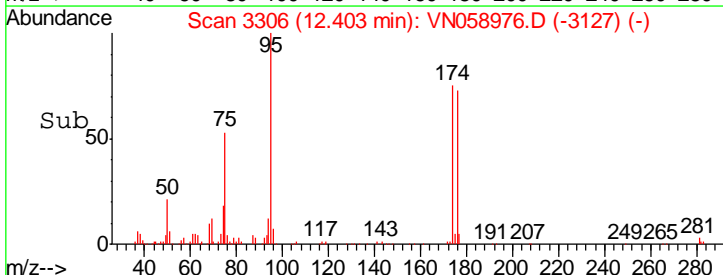
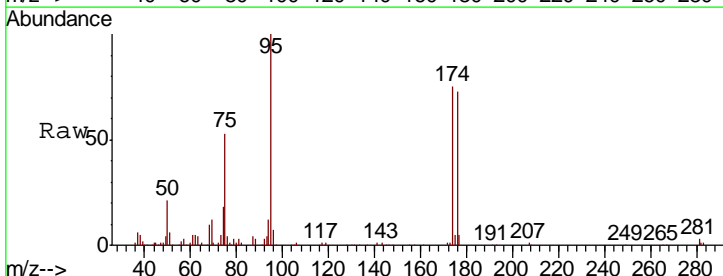
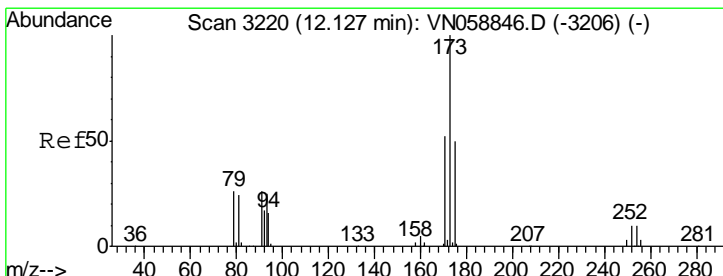
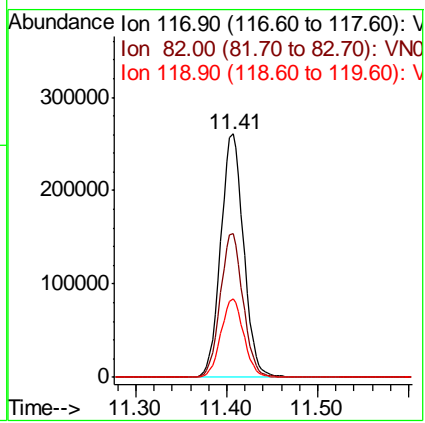




#63
 Chlorobenzene-d5
 Concen: 50.000 ug/l
 RT: 11.41 min Scan# 2996
 Delta R.T. 0.00 min
 Lab File: VN058976.D
 Acq: 25 Oct 2019 11:04

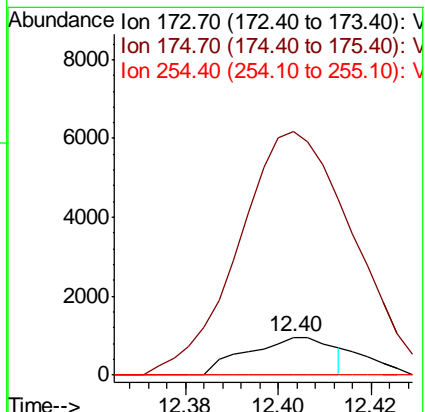
Instrument :
 MSVOA_N
 ClientSampled :

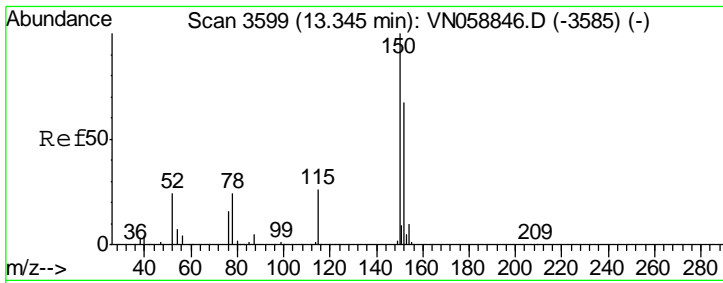
Tgt Ion	Resp	Lower	Upper
117	455694		
82	58.9	46.6	69.8
119	32.4	25.6	38.4



#71
 Bromoform
 Concen: 0.451 ug/l
 RT: 12.40 min Scan# 3306
 Delta R.T. 0.28 min
 Lab File: VN058976.D
 Acq: 25 Oct 2019 11:04

Tgt Ion	Resp	Lower	Upper
173	1224		
175	704.9	24.7	74.1#
254	0.0	0.0	0.0

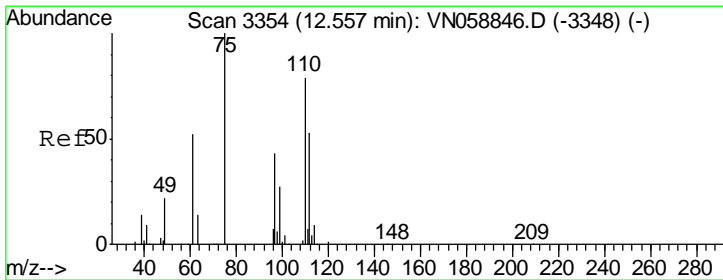
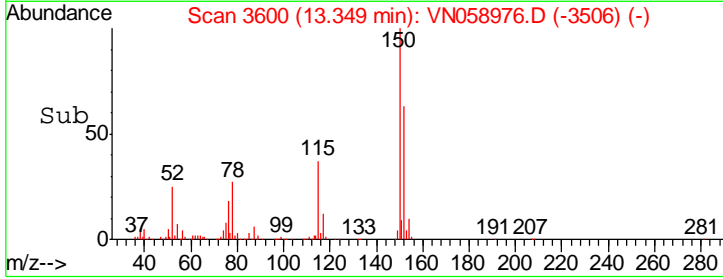
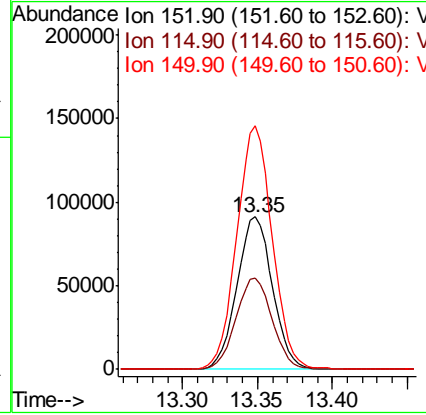
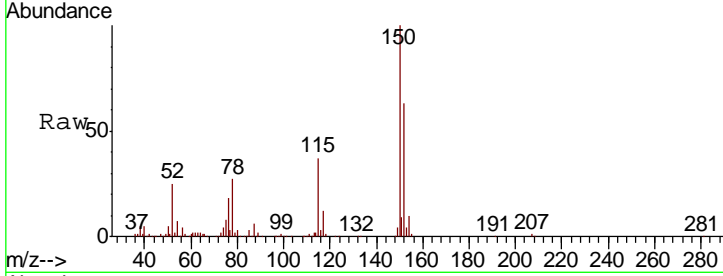




#72
 1,4-Dichlorobenzene-d4
 Concen: 50.000 ug/l
 RT: 13.35 min Scan# 3600
 Delta R.T. 0.00 min
 Lab File: VN058976.D
 Acq: 25 Oct 2019 11:04

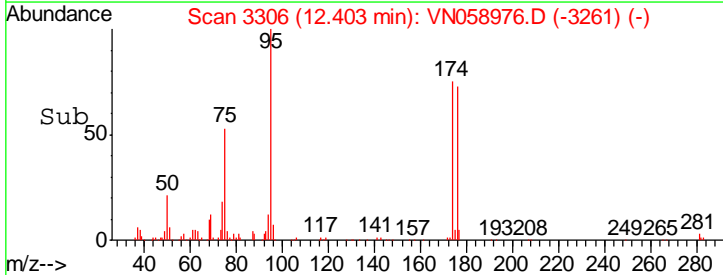
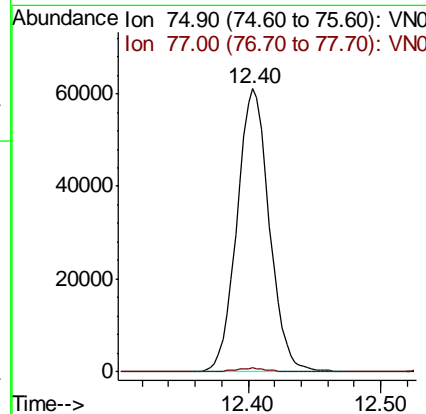
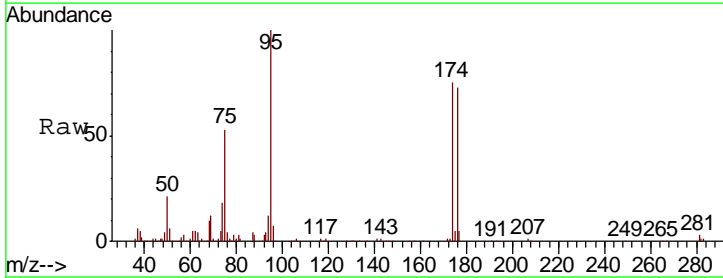
Instrument : MSVOA_N
 ClientSampled :

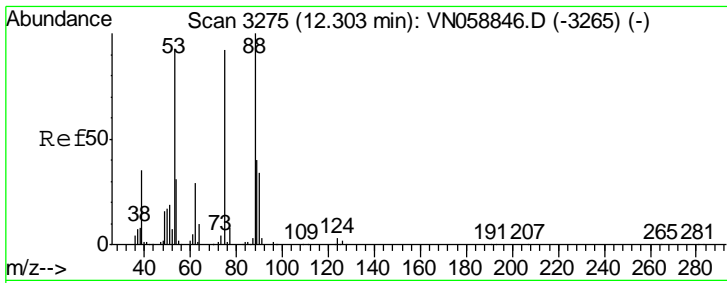
Tgt Ion	Resp	Lower	Upper
152	100		
115	61.0	30.5	91.5
150	158.9	0.0	344.4



#76
 1,2,3-Trichloropropane
 Concen: 29.522 ug/l
 RT: 12.40 min Scan# 3306
 Delta R.T. -0.15 min
 Lab File: VN058976.D
 Acq: 25 Oct 2019 11:04

Tgt Ion	Resp	Lower	Upper
75	100		
77	1.3	0.0	0.0#

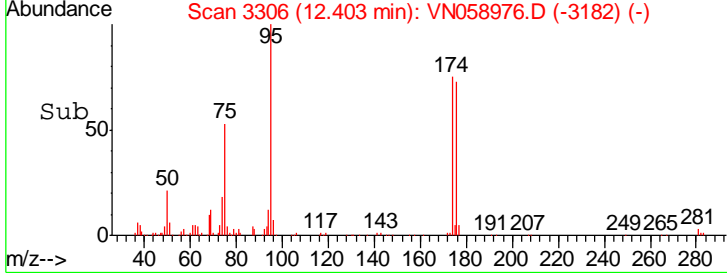
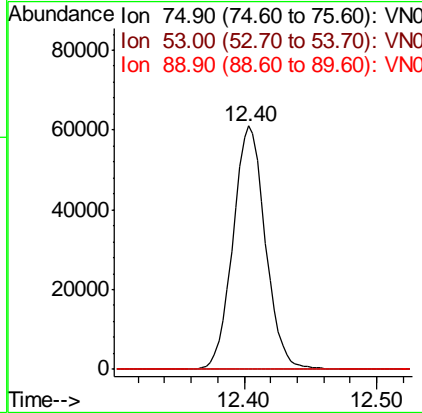
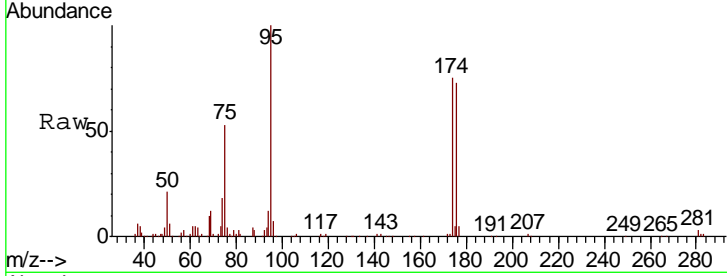




#81
 trans-1,4-Dichloro-2-butene
 Concen: 76.908 ug/l
 RT: 12.40 min Scan# 3306
 Delta R.T. 0.10 min
 Lab File: VN058976.D
 Acq: 25 Oct 2019 11:04

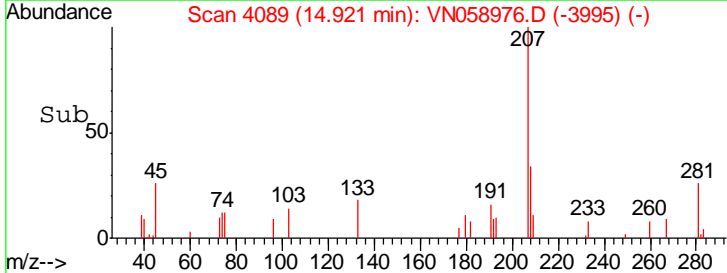
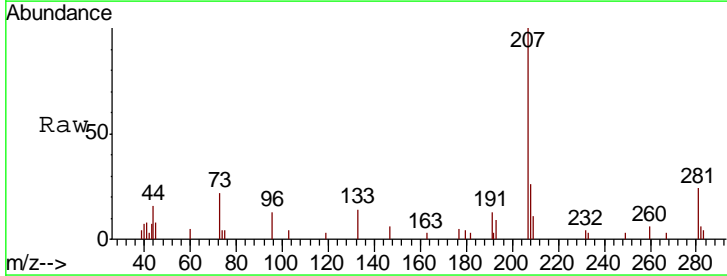
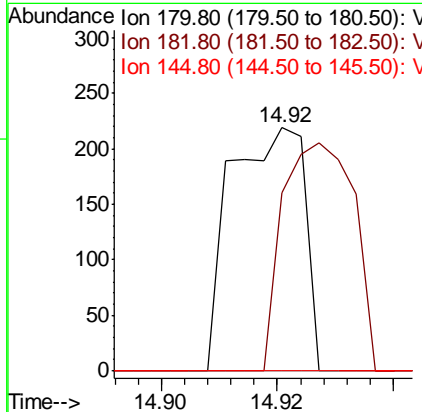
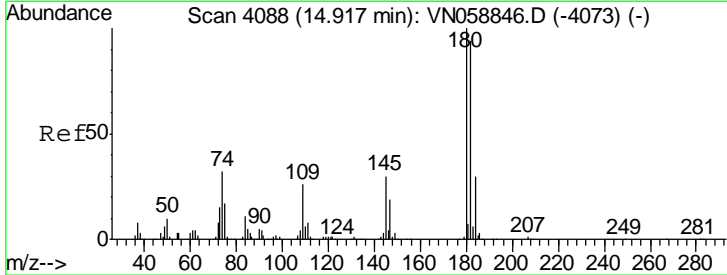
Instrument : MSVOA_N
 ClientSampled :

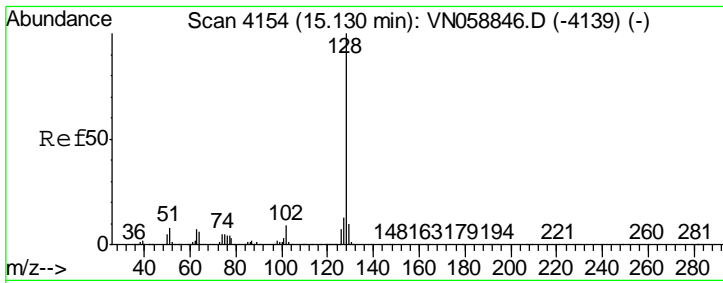
Tgt Ion	Resp	Lower	Upper
75	100		
53	0.0	78.6	118.0#
89	0.0	35.4	53.0#



#93
 1,2,4-Trichlorobenzene
 Concen: 2.581 ug/l
 RT: 14.92 min Scan# 4089
 Delta R.T. 0.00 min
 Lab File: VN058976.D
 Acq: 25 Oct 2019 11:04

Tgt Ion	Resp	Lower	Upper
180	100		
182	91.2	47.3	142.0
145	0.0	15.3	45.8#

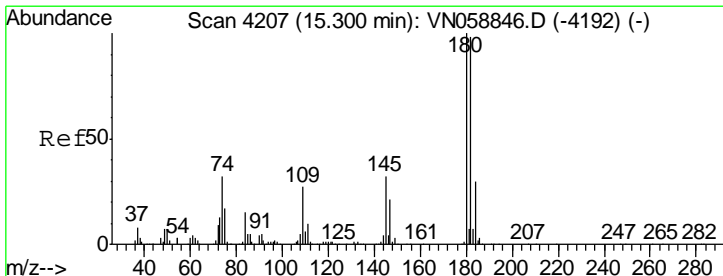
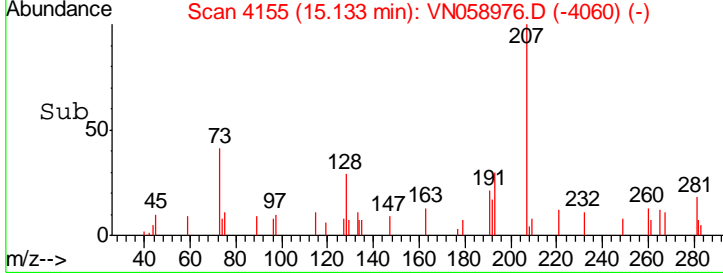
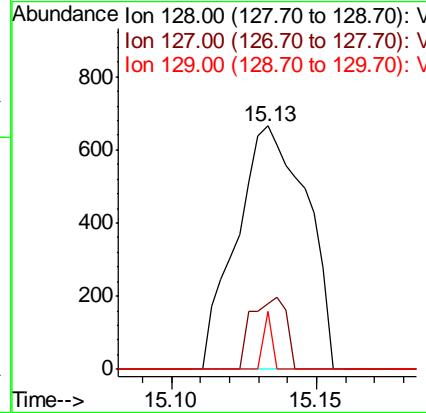
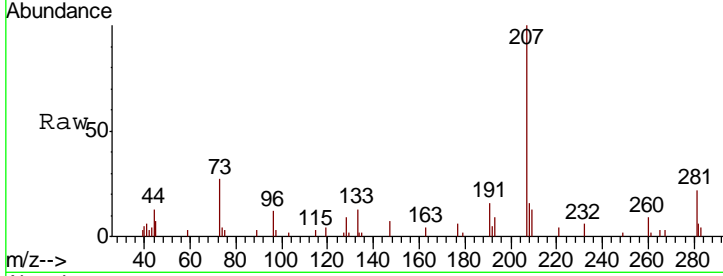




#95
 Naphthalene
 Concen: 2.349 ug/l
 RT: 15.13 min Scan# 4155
 Delta R.T. 0.00 min
 Lab File: VN058976.D
 Acq: 25 Oct 2019 11:04

Instrument : MSVOA_N
 ClientSampled :

Tgt Ion	Resp	Lower	Upper
128	100		
127	14.6	10.2	15.2
129	2.7	8.4	12.6#



#96
 1,2,3-Trichlorobenzene
 Concen: 2.504 ug/l
 RT: 15.30 min Scan# 4208
 Delta R.T. 0.00 min
 Lab File: VN058976.D
 Acq: 25 Oct 2019 11:04

Tgt Ion	Resp	Lower	Upper
180	100		
182	54.5	47.9	143.7
145	0.0	15.9	47.7#

