

Data Path : Z:\voasrv\HPCHEM1\MSVOA_N\Data\VN102721\
 Data File : VN069185.D
 Acq On : 26 Oct 2021 15:04
 Operator : JC/MD
 Sample : M4337-03
 Misc : 5.00mL/MSVOA_N/WATER
 ALS Vial : 10 Sample Multiplier: 1

Instrument :
 MSVOA_N
 ClientSampleId :
 DDC-6-PS

Quant Time: Oct 27 06:55:25 2021
 Quant Method : Z:\voasrv\HPCHEM1\MSVOA_N\methods\82N101221W.M
 Quant Title : SW846 8260
 QLast Update : Wed Oct 13 05:44:40 2021
 Response via : Initial Calibration

Compound	R.T.	QIon	Response	Conc	Units	Dev(Min)

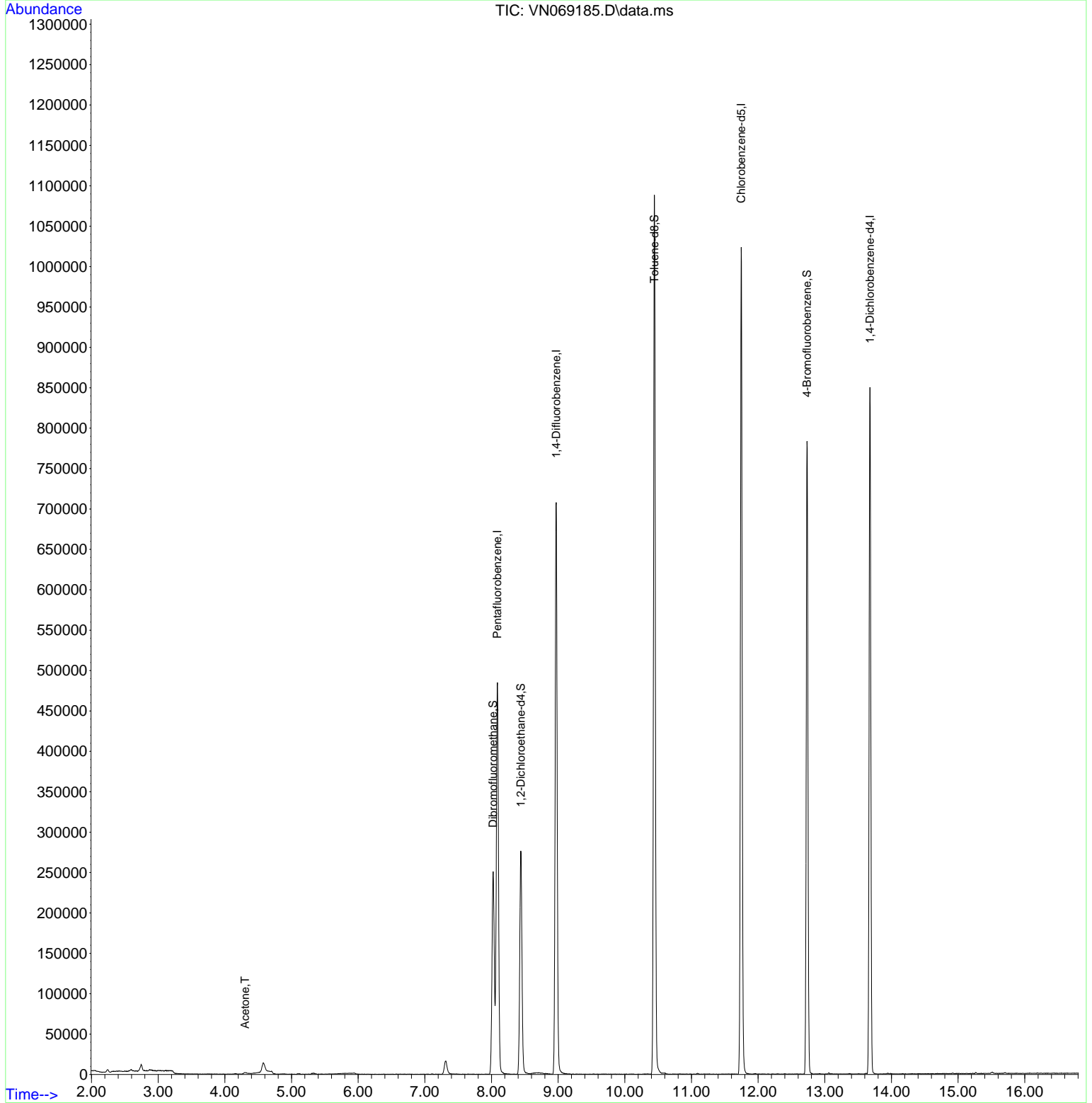
Internal Standards						
1) Pentafluorobenzene	8.088	168	367699	50.000	ug/l	0.00
34) 1,4-Difluorobenzene	8.971	114	633958	50.000	ug/l	0.00
63) Chlorobenzene-d5	11.747	117	607530	50.000	ug/l	0.00
72) 1,4-Dichlorobenzene-d4	13.678	152	229580	50.000	ug/l	0.00
System Monitoring Compounds						
33) 1,2-Dichloroethane-d4	8.440	65	236614	48.807	ug/l	0.00
Spiked Amount	50.000	Range 61 - 141	Recovery	=	97.620%	
35) Dibromofluoromethane	8.024	113	184223	49.946	ug/l	0.00
Spiked Amount	50.000	Range 69 - 133	Recovery	=	99.900%	
50) Toluene-d8	10.443	98	783979	53.122	ug/l	0.00
Spiked Amount	50.000	Range 65 - 126	Recovery	=	106.240%	
62) 4-Bromofluorobenzene	12.733	95	284490	51.094	ug/l	0.00
Spiked Amount	50.000	Range 58 - 135	Recovery	=	102.180%	
Target Compounds						
16) Acetone	4.301	43	3405	1.882	ug/l	93

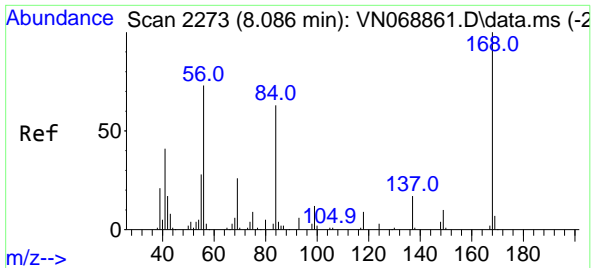
(#) = qualifier out of range (m) = manual integration (+) = signals summed

Data Path : Z:\voasrv\HPCHEM1\MSVOA_N\Data\VN102721\
 Data File : VN069185.D
 Acq On : 26 Oct 2021 15:04
 Operator : JC/MD
 Sample : M4337-03
 Misc : 5.00mL/MSVOA_N/WATER
 ALS Vial : 10 Sample Multiplier: 1

Instrument :
 MSVOA_N
 ClientSampleId :
 DDC-6-PS

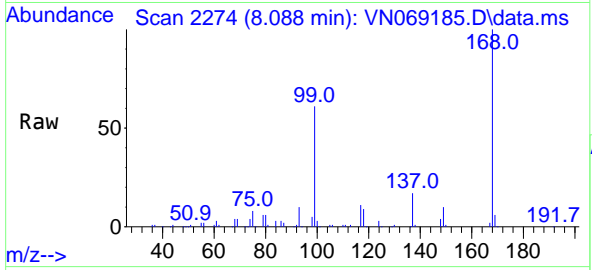
Quant Time: Oct 27 06:55:25 2021
 Quant Method : Z:\voasrv\HPCHEM1\MSVOA_N\methods\82N101221W.M
 Quant Title : SW846 8260
 QLast Update : Wed Oct 13 05:44:40 2021
 Response via : Initial Calibration



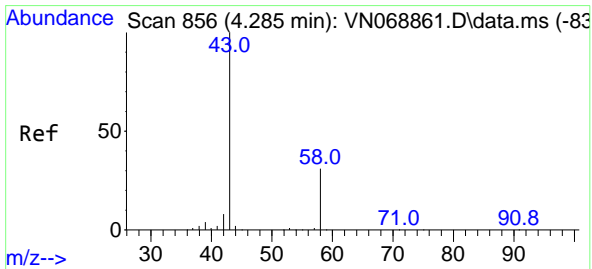
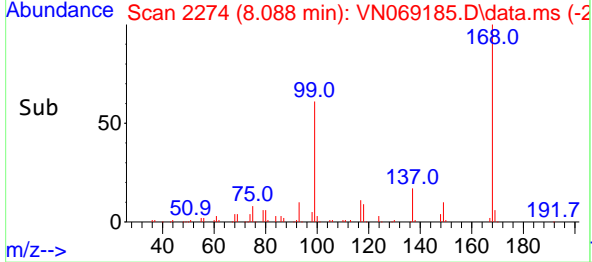
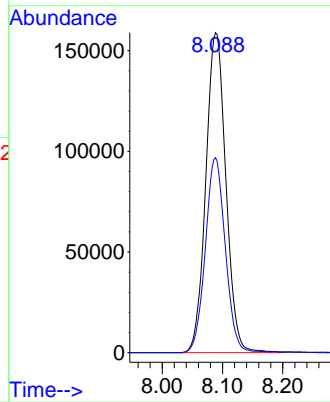


#1
 Pentafluorobenzene
 Concen: 50.000 ug/l
 RT: 8.088 min Scan# 2274
 Delta R.T. 0.002 min
 Lab File: VN069185.D
 Acq: 26 Oct 2021 15:04

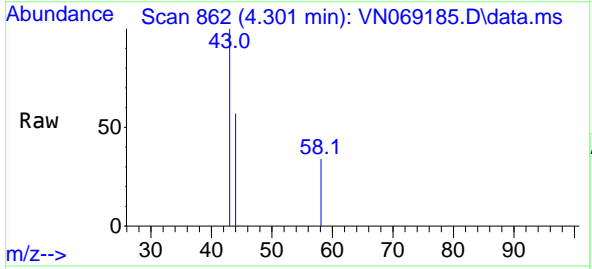
Instrument :
 MSVOA_N
ClientSampled :
 DDC-6-PS



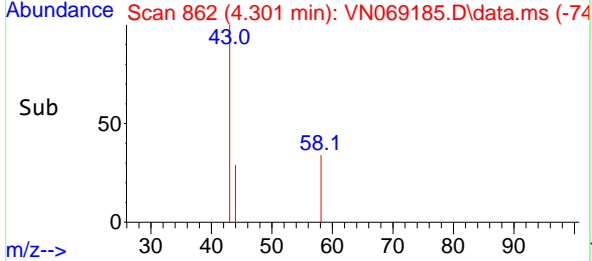
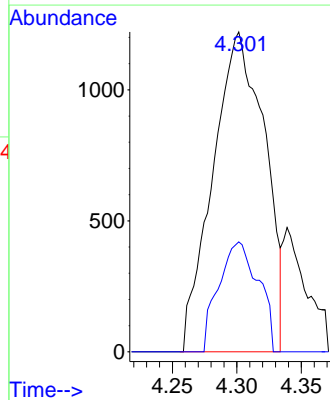
Tgt Ion:168 Resp: 367699
 Ion Ratio Lower Upper
 168 100
 99 61.0 48.9 73.3

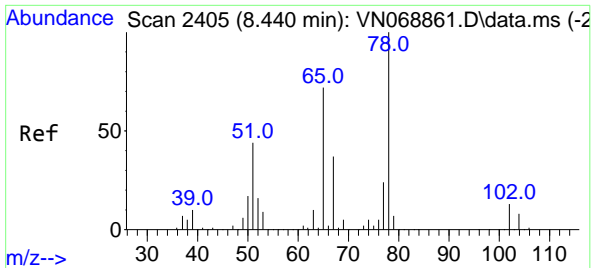


#16
 Acetone
 Concen: 1.882 ug/l
 RT: 4.301 min Scan# 862
 Delta R.T. 0.016 min
 Lab File: VN069185.D
 Acq: 26 Oct 2021 15:04



Tgt Ion: 43 Resp: 3405
 Ion Ratio Lower Upper
 43 100
 58 34.4 24.5 36.7

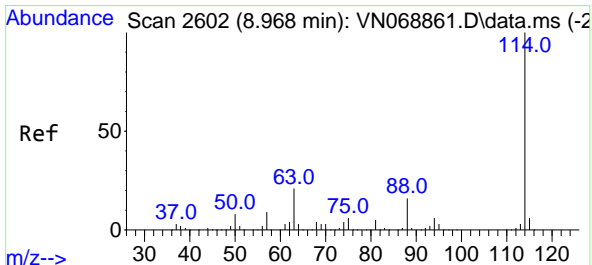
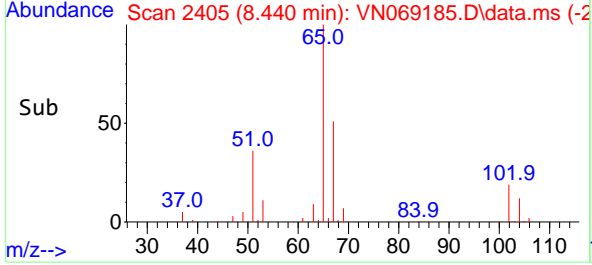
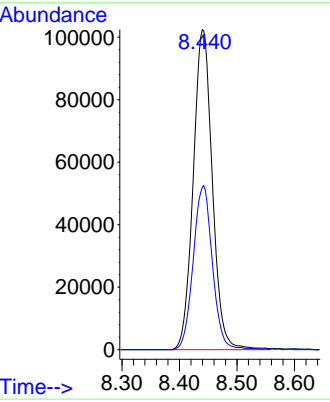
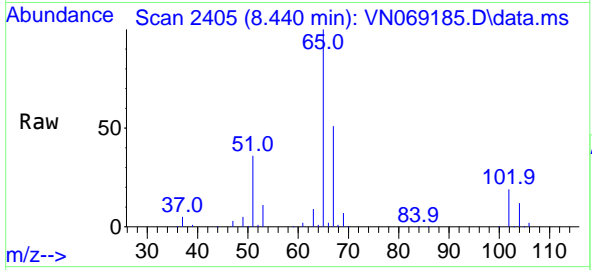




#33
 1,2-Dichloroethane-d4
 Concen: 48.807 ug/l
 RT: 8.440 min Scan# 2405
 Delta R.T. 0.000 min
 Lab File: VN069185.D
 Acq: 26 Oct 2021 15:04

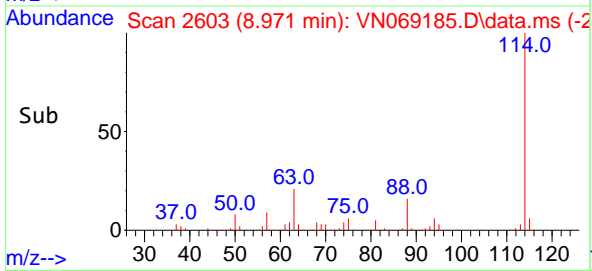
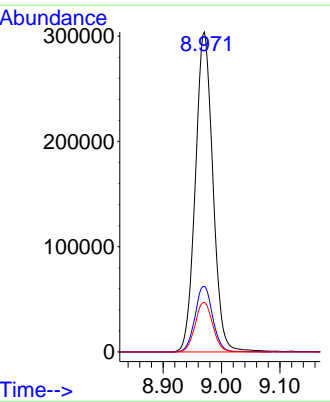
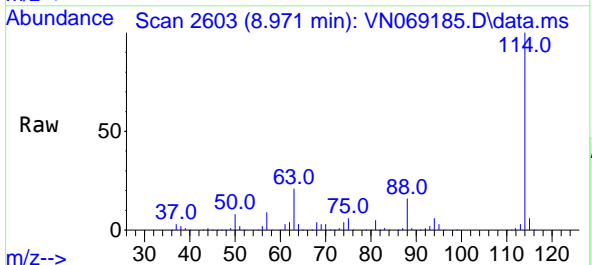
Instrument :
 MSVOA_N
 ClientSampled :
 DDC-6-PS

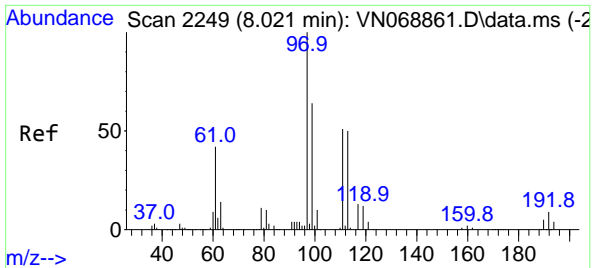
Tgt Ion: 65 Resp: 236614
 Ion Ratio Lower Upper
 65 100
 67 51.2 0.0 103.8



#34
 1,4-Difluorobenzene
 Concen: 50.000 ug/l
 RT: 8.971 min Scan# 2603
 Delta R.T. 0.003 min
 Lab File: VN069185.D
 Acq: 26 Oct 2021 15:04

Tgt Ion:114 Resp: 633958
 Ion Ratio Lower Upper
 114 100
 63 20.5 0.0 42.6
 88 15.5 0.0 32.0

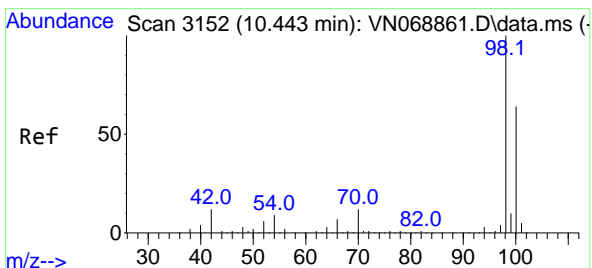
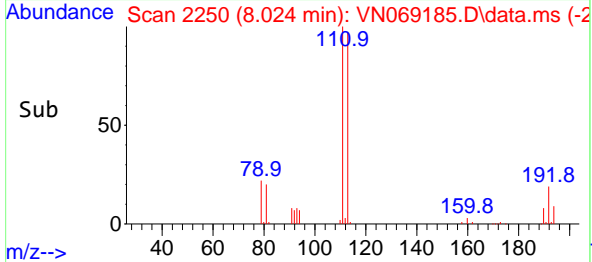
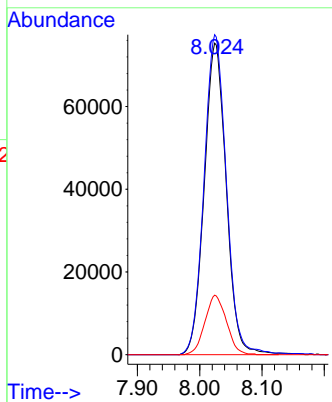
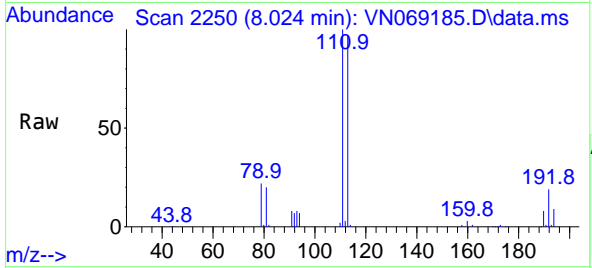




#35
 Dibromofluoromethane
 Concen: 49.946 ug/l
 RT: 8.024 min Scan# 2250
 Delta R.T. 0.003 min
 Lab File: VN069185.D
 Acq: 26 Oct 2021 15:04

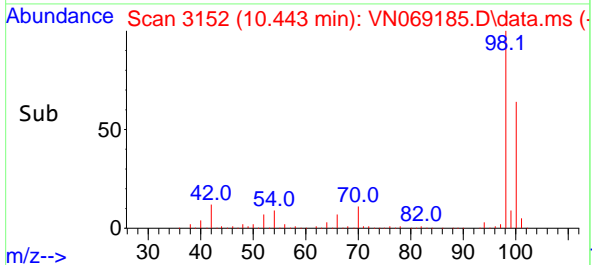
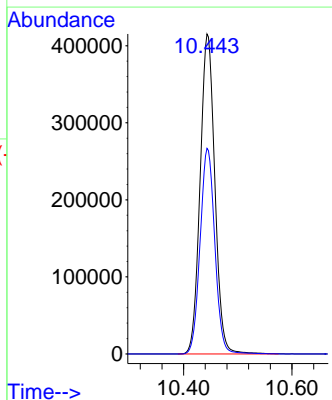
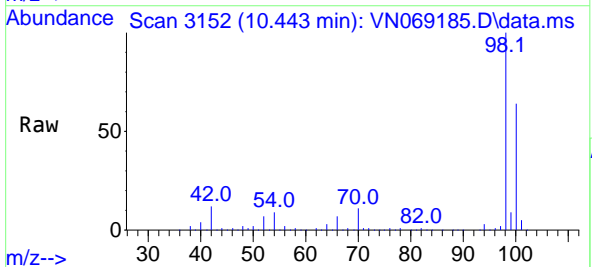
Instrument :
 MSVOA_N
 ClientSampled :
 DDC-6-PS

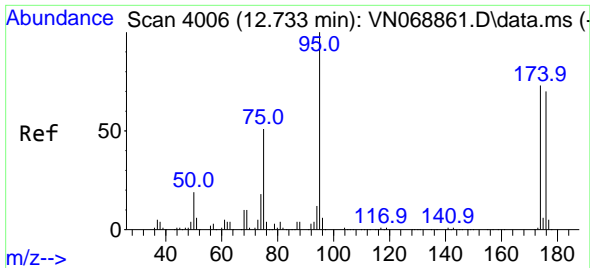
Tgt Ion:113 Resp: 184223
 Ion Ratio Lower Upper
 113 100
 111 104.5 83.2 124.8
 192 18.7 15.0 22.4



#50
 Toluene-d8
 Concen: 53.122 ug/l
 RT: 10.443 min Scan# 3152
 Delta R.T. 0.000 min
 Lab File: VN069185.D
 Acq: 26 Oct 2021 15:04

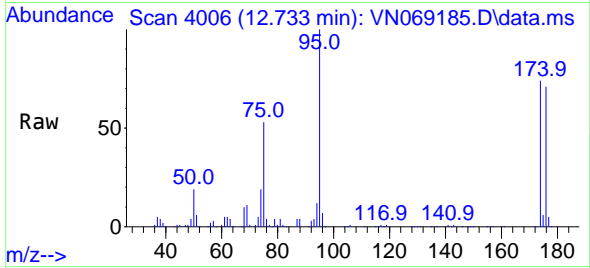
Tgt Ion: 98 Resp: 783979
 Ion Ratio Lower Upper
 98 100
 100 64.2 51.5 77.3



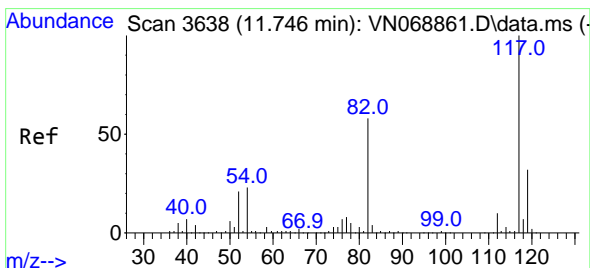
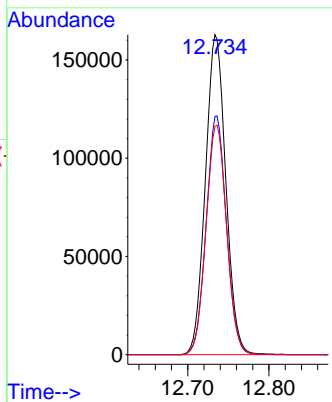
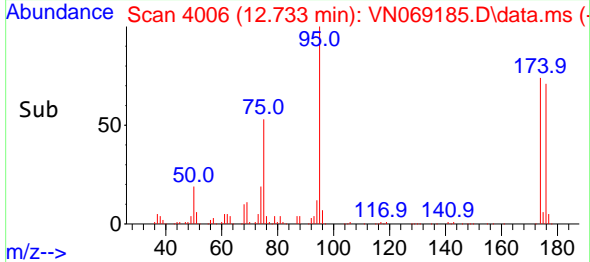


#62
 4-Bromofluorobenzene
 Concen: 51.094 ug/l
 RT: 12.733 min Scan# 4006
 Delta R.T. 0.000 min
 Lab File: VN069185.D
 Acq: 26 Oct 2021 15:04

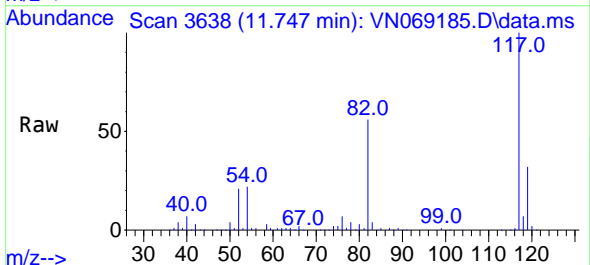
Instrument :
 MSVOA_N
 ClientSampled :
 DDC-6-PS



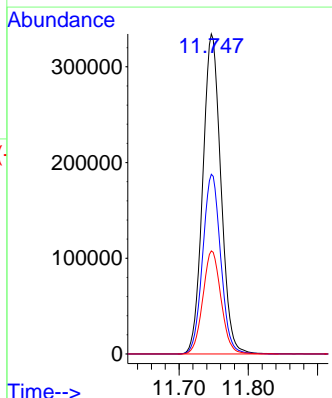
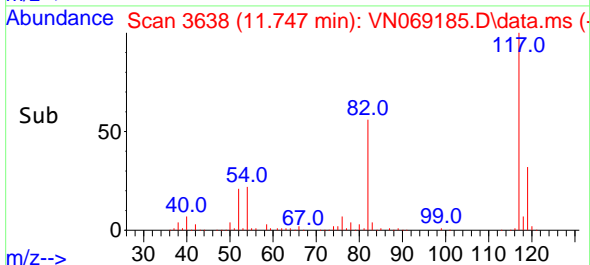
Tgt Ion: 95 Resp: 284490
 Ion Ratio Lower Upper
 95 100
 174 74.1 0.0 144.8
 176 72.2 0.0 140.0

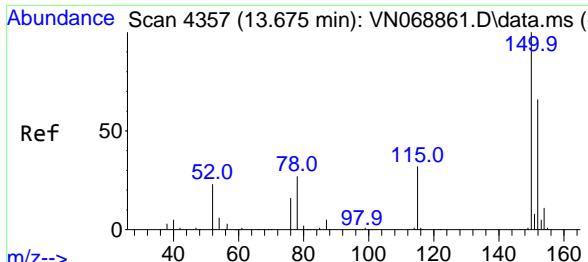


#63
 Chlorobenzene-d5
 Concen: 50.000 ug/l
 RT: 11.747 min Scan# 3638
 Delta R.T. 0.000 min
 Lab File: VN069185.D
 Acq: 26 Oct 2021 15:04



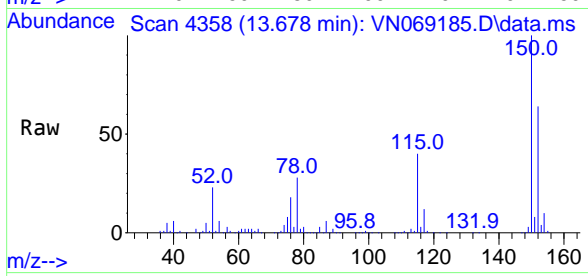
Tgt Ion: 117 Resp: 607530
 Ion Ratio Lower Upper
 117 100
 82 56.1 46.4 69.6
 119 32.2 26.0 39.0





#72
 1,4-Dichlorobenzene-d4
 Concen: 50.000 ug/l
 RT: 13.678 min Scan# 4358
 Delta R.T. 0.003 min
 Lab File: VN069185.D
 Acq: 26 Oct 2021 15:04

Instrument :
 MSVOA_N
ClientSampled :
 DDC-6-PS



Tgt Ion:152 Resp: 229580

Ion	Ratio	Lower	Upper
152	100		
115	63.0	31.4	94.3
150	156.7	0.0	351.0

