

Data Path : Z:\voasrv\HPCHEM1\MSVOA_N\Data\VN102721\
 Data File : VN069184.D
 Acq On : 26 Oct 2021 14:39
 Operator : JC/MD
 Sample : M4337-02
 Misc : 5.00mL/MSVOA_N/WATER
 ALS Vial : 9 Sample Multiplier: 1

Instrument :
 MSVOA_N
 ClientSampleId :
 DDC-5-PD

Integration Parameters: RTEINT.P

Integrator: RTE
 Smoothing : ON Filtering: 5
 Sampling : 1 Min Area: 3 % of largest Peak
 Start Thrs: 0.2 Max Peaks: 100
 Stop Thrs : 0 Peak Location: TOP

If leading or trailing edge < 100 prefer < Baseline drop else tangent >
 Peak separation: 5

Method : Z:\voasrv\HPCHEM1\MSVOA_N\methods\82N101221W.M
 Title : SW846 8260

Signal : TIC: VN069184.D\data.ms

peak #	R.T. min	first scan	max scan	last scan	PK TY	peak height	corr. area	corr. % max.	% of total
1	4.583	946	967	989	rBV2	17041	53482	2.71%	0.513%
2	7.316	1961	1986	2011	rBV2	31373	98295	4.98%	0.942%
3	8.024	2228	2250	2261	rBV	243080	577144	29.22%	5.531%
4	8.088	2262	2274	2305	rVB	463348	1051937	53.26%	10.081%
5	8.440	2384	2405	2433	rBV	263859	615234	31.15%	5.896%
6	8.971	2583	2603	2642	rBV	678138	1414804	71.63%	13.559%
7	10.443	3131	3152	3192	rBV	1052320	1975104	100.00%	18.929%
8	10.979	3337	3352	3368	rBV2	94233	169364	8.57%	1.623%
9	11.747	3619	3638	3667	rBV	998433	1785934	90.42%	17.116%
10	12.734	3989	4006	4033	rBV	738654	1303729	66.01%	12.495%
11	13.678	4342	4358	4386	rVB	810914	1389332	70.34%	13.315%

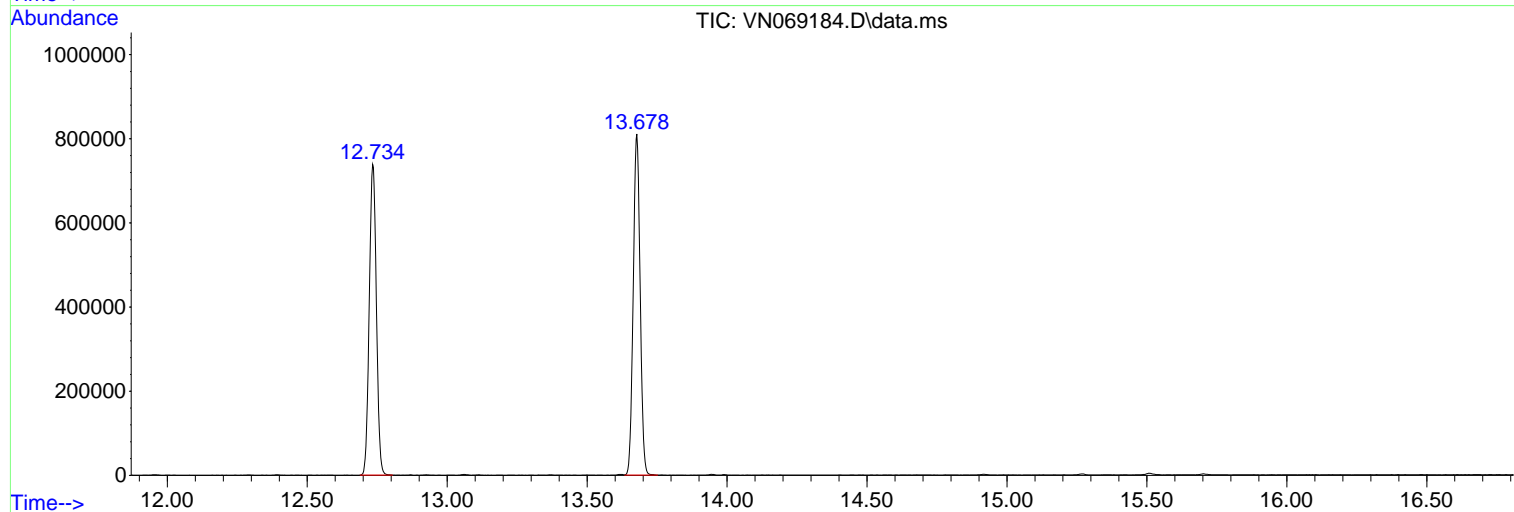
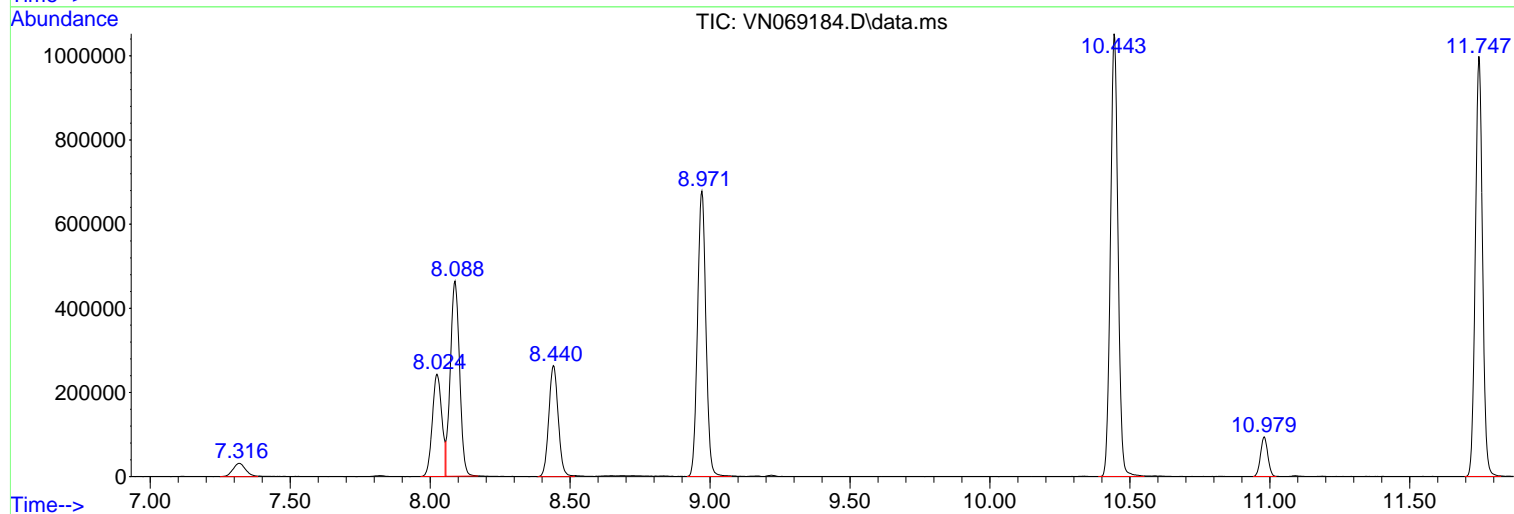
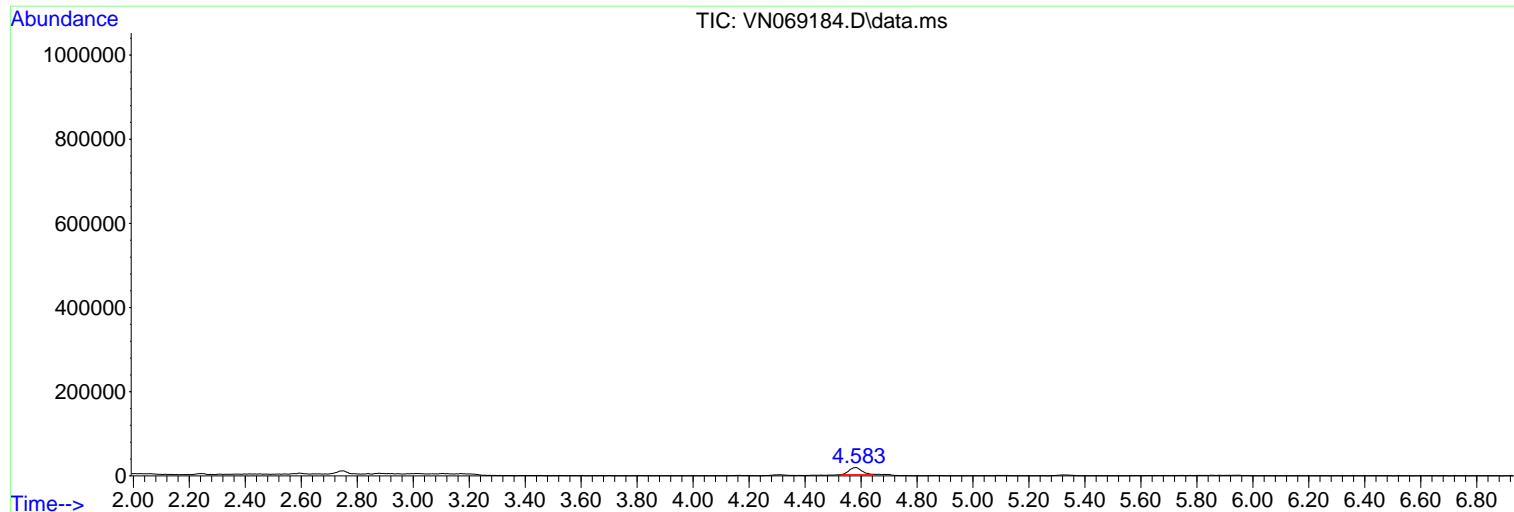
Sum of corrected areas: 10434359

Data Path : Z:\voasrv\HPCHEM1\MSVOA_N\Data\VN102721\
Data File : VN069184.D
Acq On : 26 Oct 2021 14:39
Operator : JC/MD
Sample : M4337-02
Misc : 5.00mL/MSVOA_N/WATER
ALS Vial : 9 Sample Multiplier: 1

Instrument :
MSVOA_N
ClientSampleId :
DDC-5-PD

Quant Method : Z:\voasrv\HPCHEM1\MSVOA_N\methods\82N101221W.M
Quant Title : SW846 8260

TIC Library : C:\Database\NIST20.L
TIC Integration Parameters: LSCINT.P



Library Search Compound Report

Data Path : Z:\voasrv\HPCHEM1\MSVOA_N\Data\VN102721\
Data File : VN069184.D
Acq On : 26 Oct 2021 14:39
Operator : JC/MD
Sample : M4337-02
Misc : 5.00mL/MSVOA_N/WATER
ALS Vial : 9 Sample Multiplier: 1

Instrument :
MSVOA_N
ClientSampleId :
DDC-5-PD

Quant Method : Z:\voasrv\HPCHEM1\MSVOA_N\methods\82N101221W.M
Quant Title : SW846 8260

TIC Library : C:\Database\NIST20.L
TIC Integration Parameters: LSCINT.P

No Library Search Compounds Detected

Data Path : Z:\voasrv\HPCHEM1\MSVOA_N\Data\VN102721\
Data File : VN069184.D
Acq On : 26 Oct 2021 14:39
Operator : JC/MD
Sample : M4337-02
Misc : 5.00mL/MSVOA_N/WATER
ALS Vial : 9 Sample Multiplier: 1

Instrument :
MSVOA_N
ClientSampleId :
DDC-5-PD

Quant Method : Z:\voasrv\HPCHEM1\MSVOA_N\methods\82N101221W.M
Quant Title : SW846 8260

TIC Library : C:\Database\NIST20.L
TIC Integration Parameters: LSCINT.P

TIC Top Hit name	RT	EstConc	Units	Response	--Internal Standard--		
					#	RT	Resp Conc
