

Data Path : Z:\voasrv\HPCHEM1\MSVOA\_N\Data\VN102821\  
 Data File : VN069284.D  
 Acq On : 29 Oct 2021 6:52  
 Operator : JC/MD  
 Sample : M4378-02  
 Misc : 5.00mL/MSVOA\_N/WATER  
 ALS Vial : 46 Sample Multiplier: 1

Instrument :  
 MSVOA\_N  
 ClientSampleId :  
 WASTE-CHAR-(EXCESS)

Quant Time: Oct 29 07:58:15 2021  
 Quant Method : Z:\voasrv\HPCHEM1\MSVOA\_N\methods\82N102821W.M  
 Quant Title : SW846 8260  
 QLast Update : Thu Oct 28 16:09:15 2021  
 Response via : Initial Calibration

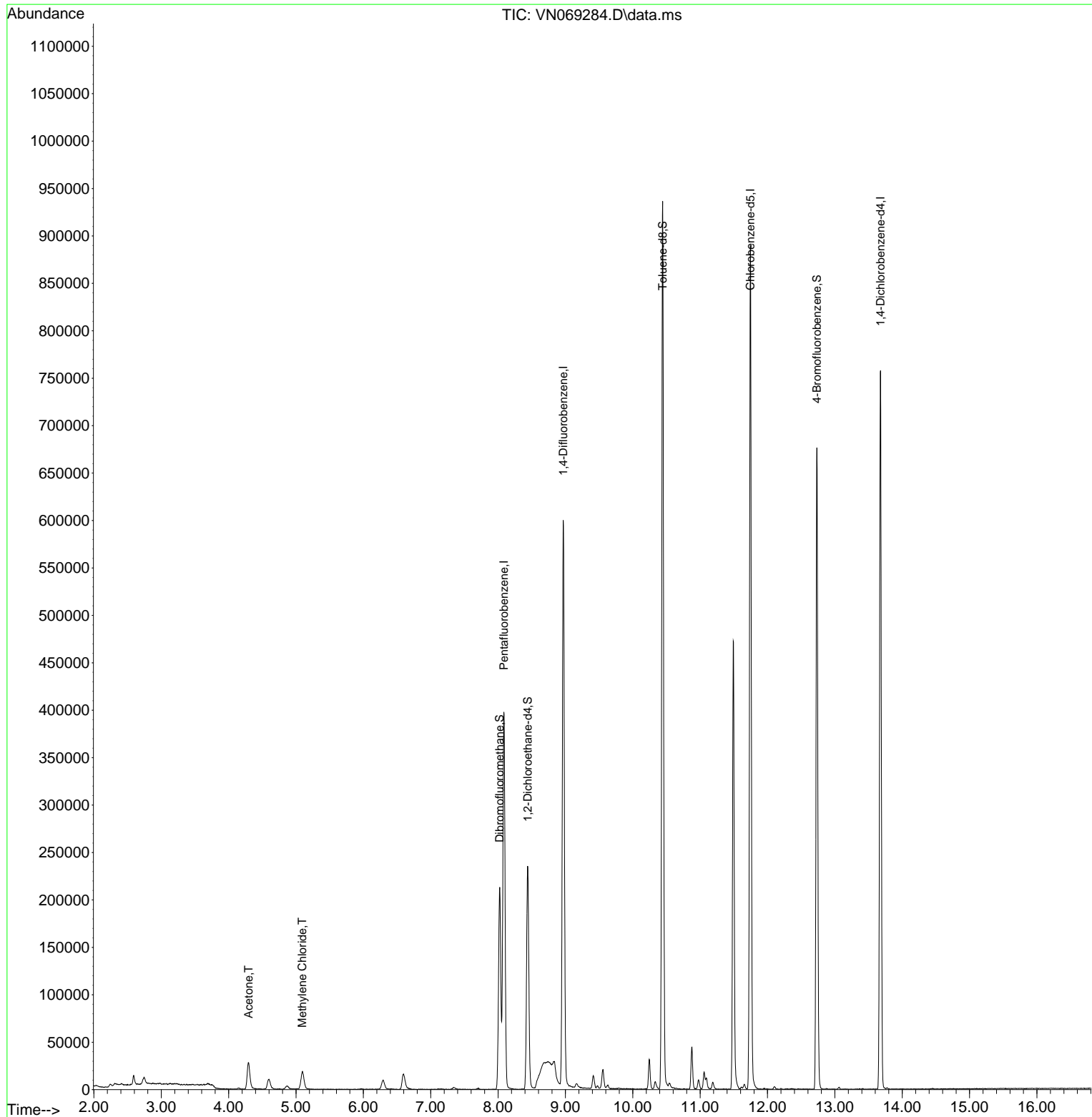
Compound	R.T.	QIon	Response	Conc	Units	Dev(Min)
-----						
Internal Standards						
1) Pentafluorobenzene	8.088	168	298715	50.000	ug/l	0.00
34) 1,4-Difluorobenzene	8.968	114	535312	50.000	ug/l	0.00
63) Chlorobenzene-d5	11.747	117	525006	50.000	ug/l	0.00
72) 1,4-Dichlorobenzene-d4	13.678	152	202786	50.000	ug/l	0.00
System Monitoring Compounds						
33) 1,2-Dichloroethane-d4	8.440	65	201586	46.749	ug/l	0.00
Spiked Amount	50.000	Range 61 - 141	Recovery	=	93.500%	
35) Dibromofluoromethane	8.024	113	153150	45.895	ug/l	0.00
Spiked Amount	50.000	Range 69 - 133	Recovery	=	91.800%	
50) Toluene-d8	10.443	98	664927	49.837	ug/l	0.00
Spiked Amount	50.000	Range 65 - 126	Recovery	=	99.680%	
62) 4-Bromofluorobenzene	12.734	95	245084	48.679	ug/l	0.00
Spiked Amount	50.000	Range 58 - 135	Recovery	=	97.360%	
Target Compounds						
						Qvalue
16) Acetone	4.296	43	53604	29.177	ug/l	99
20) Methylene Chloride	5.093	84	15405	4.372	ug/l	95
-----						

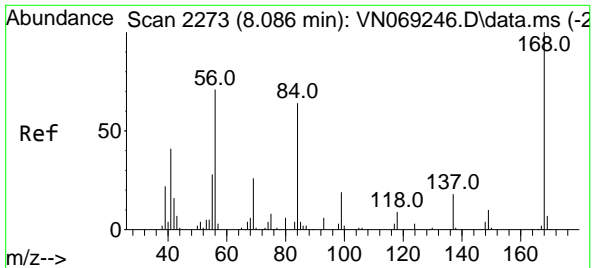
(#) = qualifier out of range (m) = manual integration (+) = signals summed

Data Path : Z:\voasrv\HPCHEM1\MSVOA\_N\Data\VN102821\  
 Data File : VN069284.D  
 Acq On : 29 Oct 2021 6:52  
 Operator : JC/MD  
 Sample : M4378-02  
 Misc : 5.00mL/MSVOA\_N/WATER  
 ALS Vial : 46 Sample Multiplier: 1

Instrument :  
 MSVOA\_N  
 ClientSampleId :  
 WASTE-CHAR-(EXCESS)

Quant Time: Oct 29 07:58:15 2021  
 Quant Method : Z:\voasrv\HPCHEM1\MSVOA\_N\methods\82N102821W.M  
 Quant Title : SW846 8260  
 QLast Update : Thu Oct 28 16:09:15 2021  
 Response via : Initial Calibration

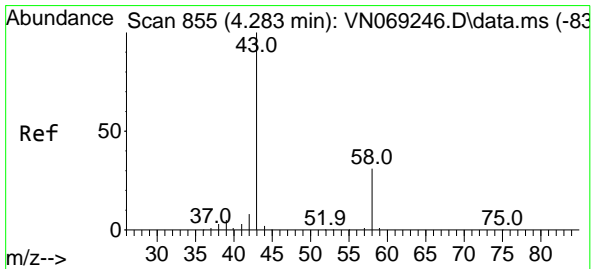
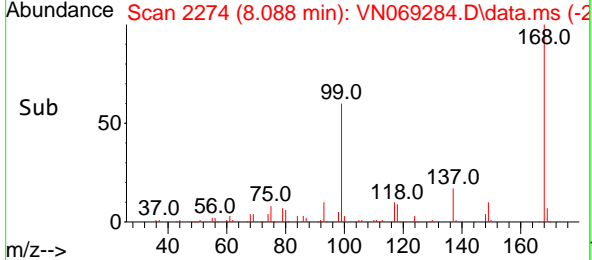
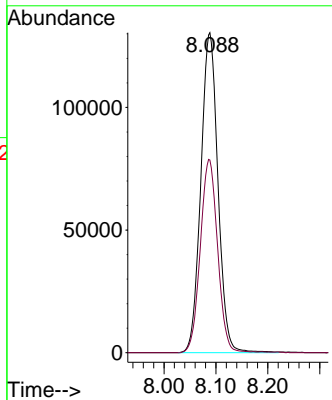
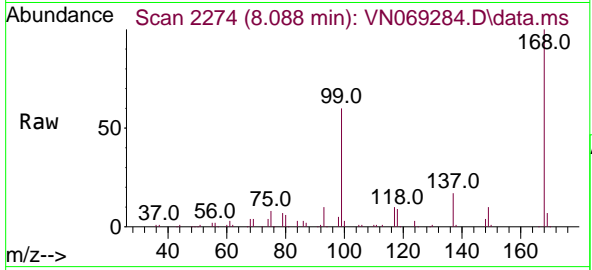




#1  
 Pentafluorobenzene  
 Concen: 50.000 ug/l  
 RT: 8.088 min Scan# 21  
 Delta R.T. 0.002 min  
 Lab File: VN069284.D  
 Acq: 29 Oct 2021 6:52

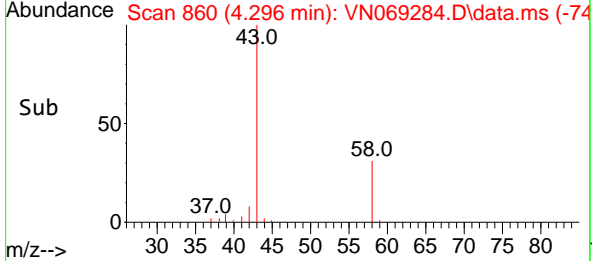
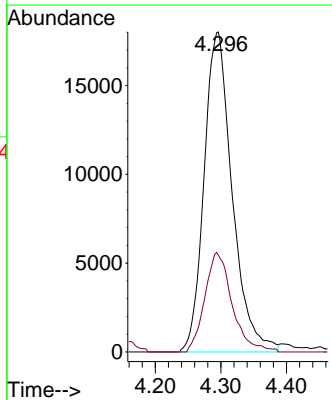
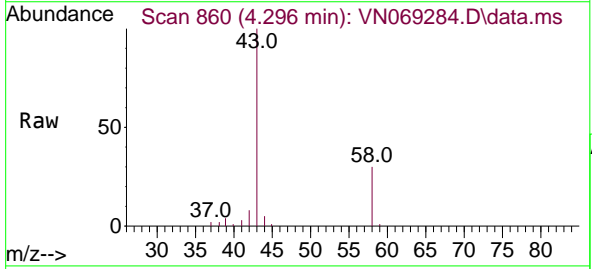
Instrument : MSVOA\_N  
 ClientSampleId : WASTE-CHAR-(EXCESS)

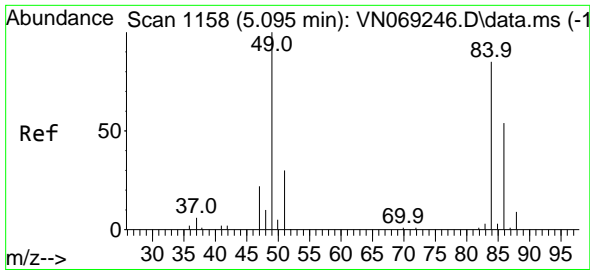
Tgt Ion:168 Resp: 298715  
 Ion Ratio Lower Upper  
 168 100  
 99 60.2 48.9 73.3



#16  
 Acetone  
 Concen: 29.177 ug/l  
 RT: 4.296 min Scan# 860  
 Delta R.T. 0.013 min  
 Lab File: VN069284.D  
 Acq: 29 Oct 2021 6:52

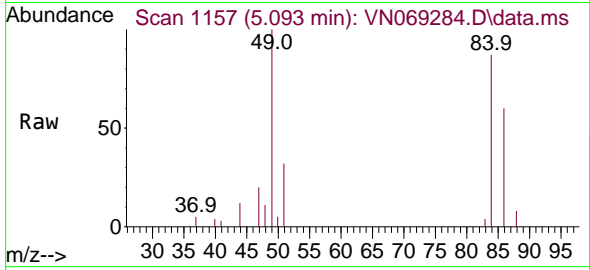
Tgt Ion: 43 Resp: 53604  
 Ion Ratio Lower Upper  
 43 100  
 58 30.3 24.5 36.7





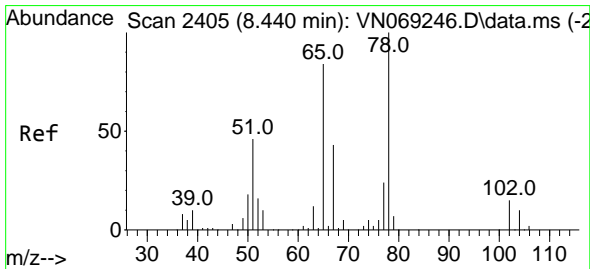
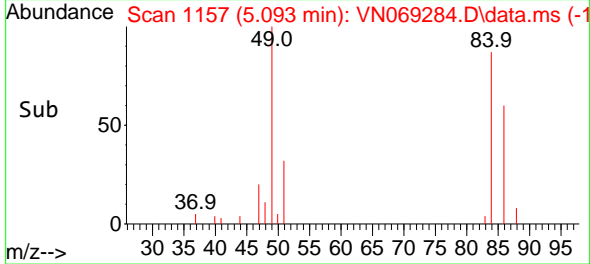
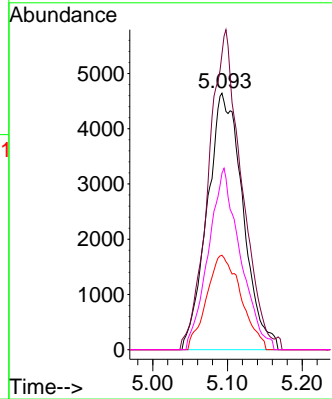
#20  
 Methylene Chloride  
 Concen: 4.372 ug/l  
 RT: 5.093 min Scan# 1157  
 Delta R.T. -0.002 min  
 Lab File: VN069284.D  
 Acq: 29 Oct 2021 6:52

Instrument : MSVOA\_N  
 ClientSampleId : WASTE-CHAR-(EXCESS)



Tgt Ion: 84 Resp: 15405

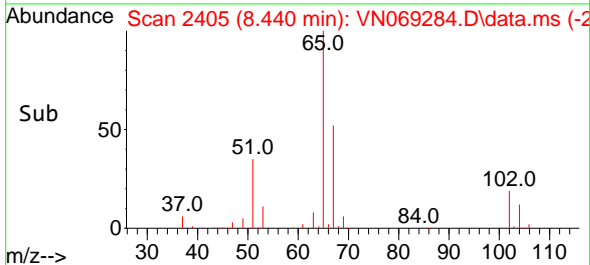
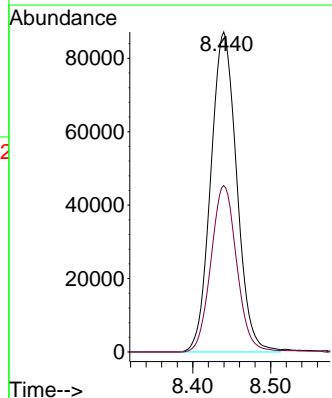
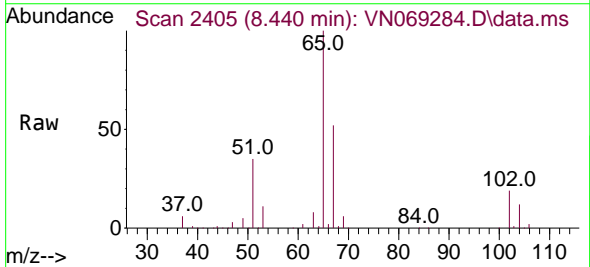
Ion	Ratio	Lower	Upper
84	100		
49	115.4	97.6	146.4
51	36.8	30.3	45.5
86	68.8	51.8	77.6

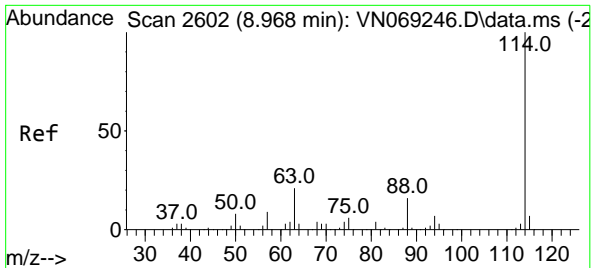


#33  
 1,2-Dichloroethane-d4  
 Concen: 46.749 ug/l  
 RT: 8.440 min Scan# 2405  
 Delta R.T. -0.000 min  
 Lab File: VN069284.D  
 Acq: 29 Oct 2021 6:52

Tgt Ion: 65 Resp: 201586

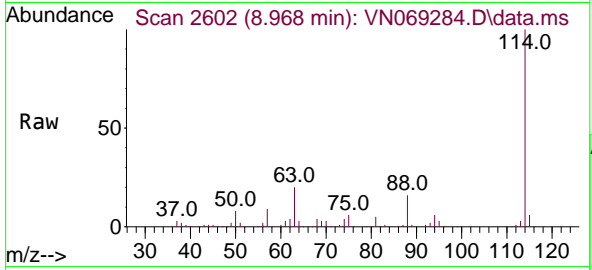
Ion	Ratio	Lower	Upper
65	100		
67	51.6	0.0	103.8





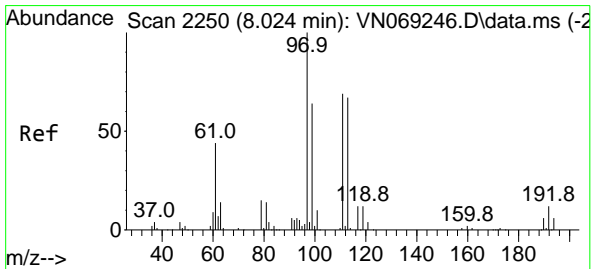
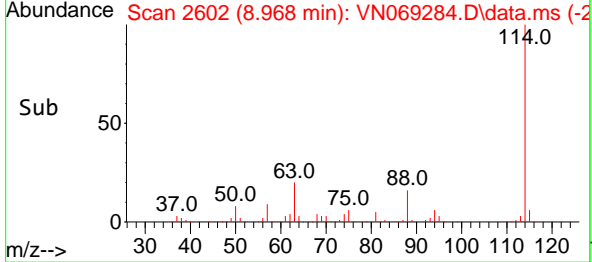
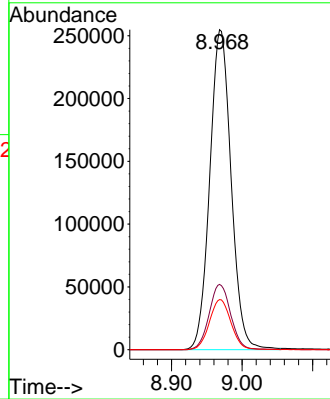
#34  
 1,4-Difluorobenzene  
 Concen: 50.000 ug/l  
 RT: 8.968 min Scan# 2602  
 Delta R.T. 0.000 min  
 Lab File: VN069284.D  
 Acq: 29 Oct 2021 6:52

Instrument : MSVOA\_N  
 ClientSampleId : WASTE-CHAR-(EXCESS)

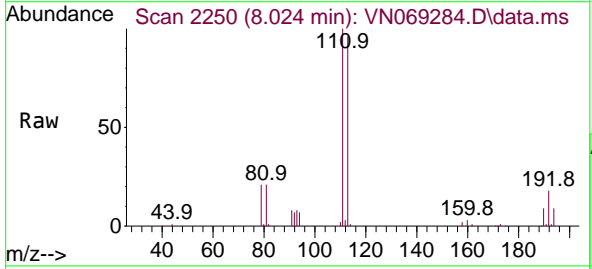


Tgt Ion:114 Resp: 535312

Ion	Ratio	Lower	Upper
114	100		
63	20.4	0.0	42.6
88	15.7	0.0	32.0

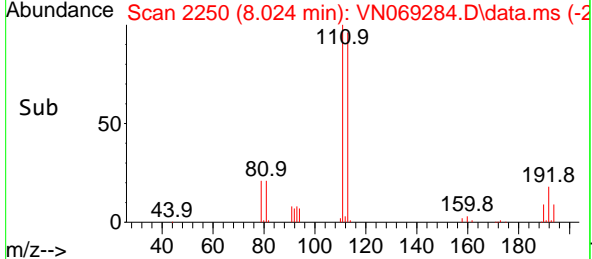
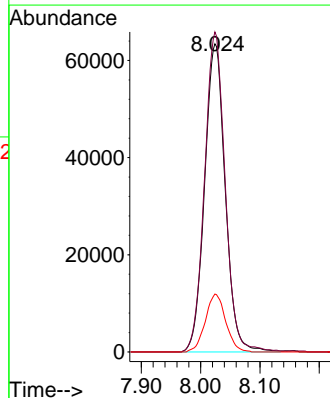


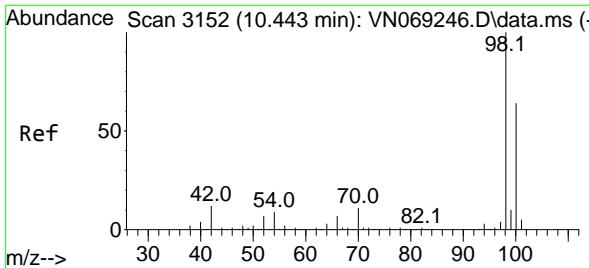
#35  
 Dibromofluoromethane  
 Concen: 45.895 ug/l  
 RT: 8.024 min Scan# 2250  
 Delta R.T. 0.000 min  
 Lab File: VN069284.D  
 Acq: 29 Oct 2021 6:52



Tgt Ion:113 Resp: 153150

Ion	Ratio	Lower	Upper
113	100		
111	103.8	83.2	124.8
192	18.5	15.0	22.4

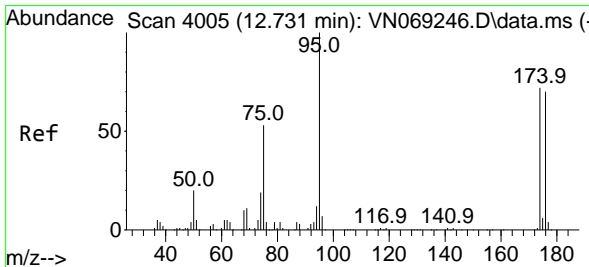
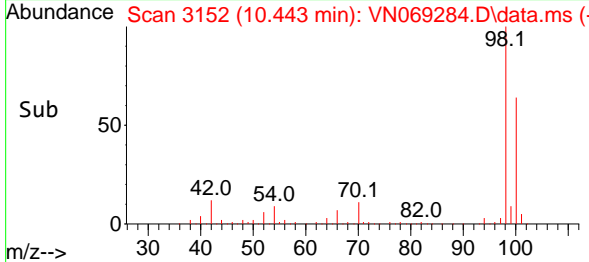
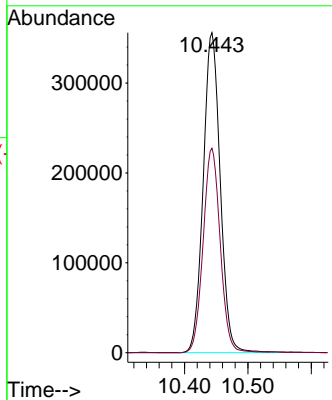
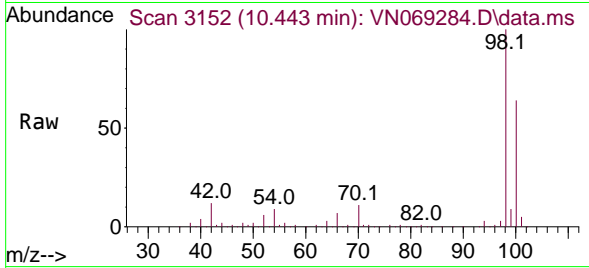




#50  
 Toluene-d8  
 Concen: 49.837 ug/l  
 RT: 10.443 min Scan# 3152  
 Delta R.T. 0.000 min  
 Lab File: VN069284.D  
 Acq: 29 Oct 2021 6:52

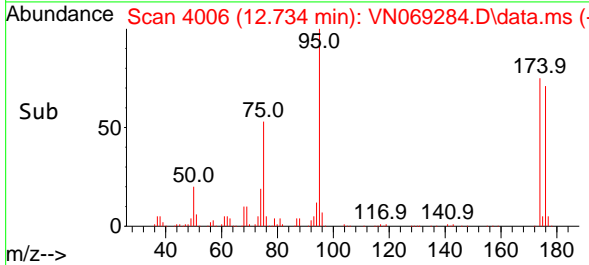
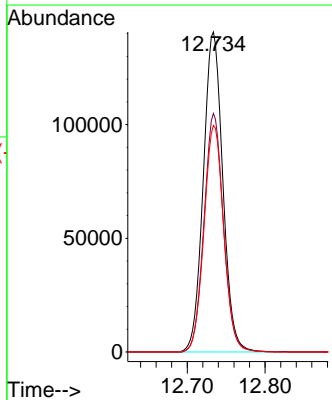
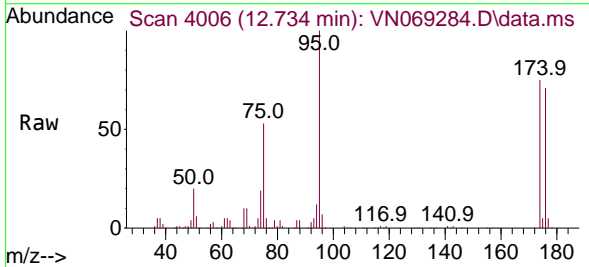
Instrument : MSVOA\_N  
 ClientSampleId : WASTE-CHAR-(EXCESS)

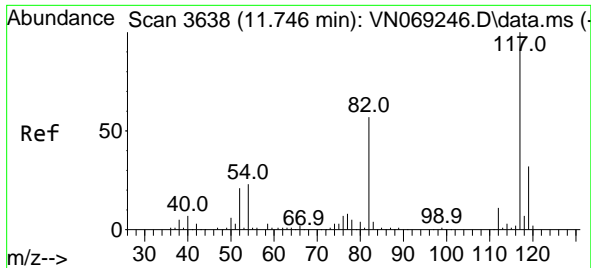
Tgt Ion: 98 Resp: 664927  
 Ion Ratio Lower Upper  
 98 100  
 100 64.0 51.5 77.3



#62  
 4-Bromofluorobenzene  
 Concen: 48.679 ug/l  
 RT: 12.734 min Scan# 4006  
 Delta R.T. 0.003 min  
 Lab File: VN069284.D  
 Acq: 29 Oct 2021 6:52

Tgt Ion: 95 Resp: 245084  
 Ion Ratio Lower Upper  
 95 100  
 174 74.4 0.0 144.8  
 176 71.7 0.0 140.0

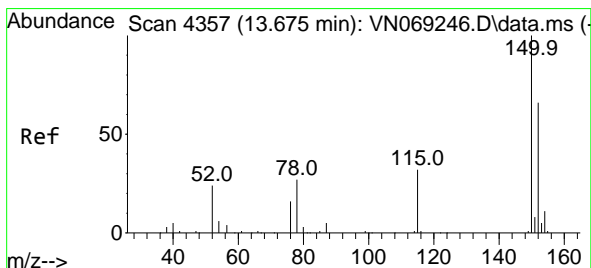
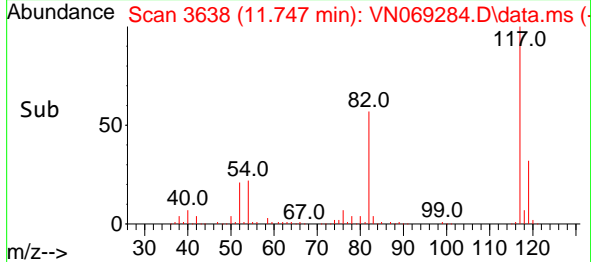
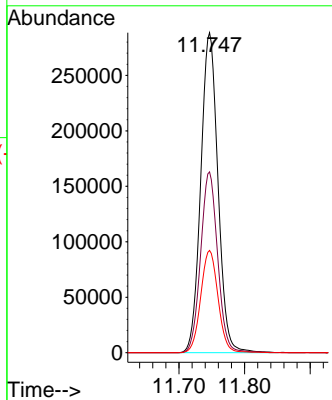
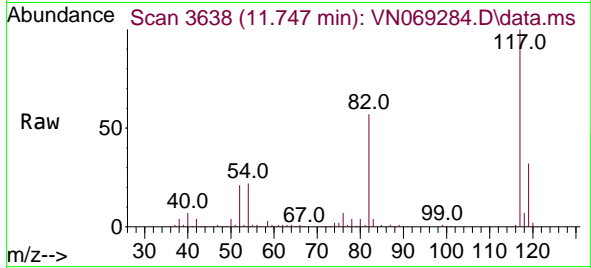




#63  
 Chlorobenzene-d5  
 Concen: 50.000 ug/l  
 RT: 11.747 min Scan# 30  
 Delta R.T. 0.000 min  
 Lab File: VN069284.D  
 Acq: 29 Oct 2021 6:52

Instrument :  
 MSVOA\_N  
 ClientSampleId :  
 WASTE-CHAR-(EXCESS)

Tgt Ion	Resp	Lower	Upper
117	100		
82	56.5	46.4	69.6
119	31.9	26.0	39.0



#72  
 1,4-Dichlorobenzene-d4  
 Concen: 50.000 ug/l  
 RT: 13.678 min Scan# 4358  
 Delta R.T. 0.003 min  
 Lab File: VN069284.D  
 Acq: 29 Oct 2021 6:52

Tgt Ion	Resp	Lower	Upper
152	100		
115	63.0	31.4	94.3
150	157.6	0.0	351.0

