

Data Path : Z:\voasrv\HPCHEM1\MSVOA\_N\Data\VN110123\  
 Data File : VN079776.D  
 Acq On : 01 Nov 2023 17:07  
 Operator : JC\MD  
 Sample : 05173-05  
 Misc : 5.0mL/MSVOA\_N/WATER  
 ALS Vial : 19 Sample Multiplier: 1

Instrument :  
 MSVOA\_N  
 ClientSampleId :  
 BP-VPB-188-GW-200-202

Quant Time: Nov 02 05:57:04 2023  
 Quant Method : Z:\voasrv\HPCHEM1\MSVOA\_N\methods\82N110123W.M  
 Quant Title : SW846 8260  
 QLast Update : Thu Nov 02 05:49:08 2023  
 Response via : Initial Calibration

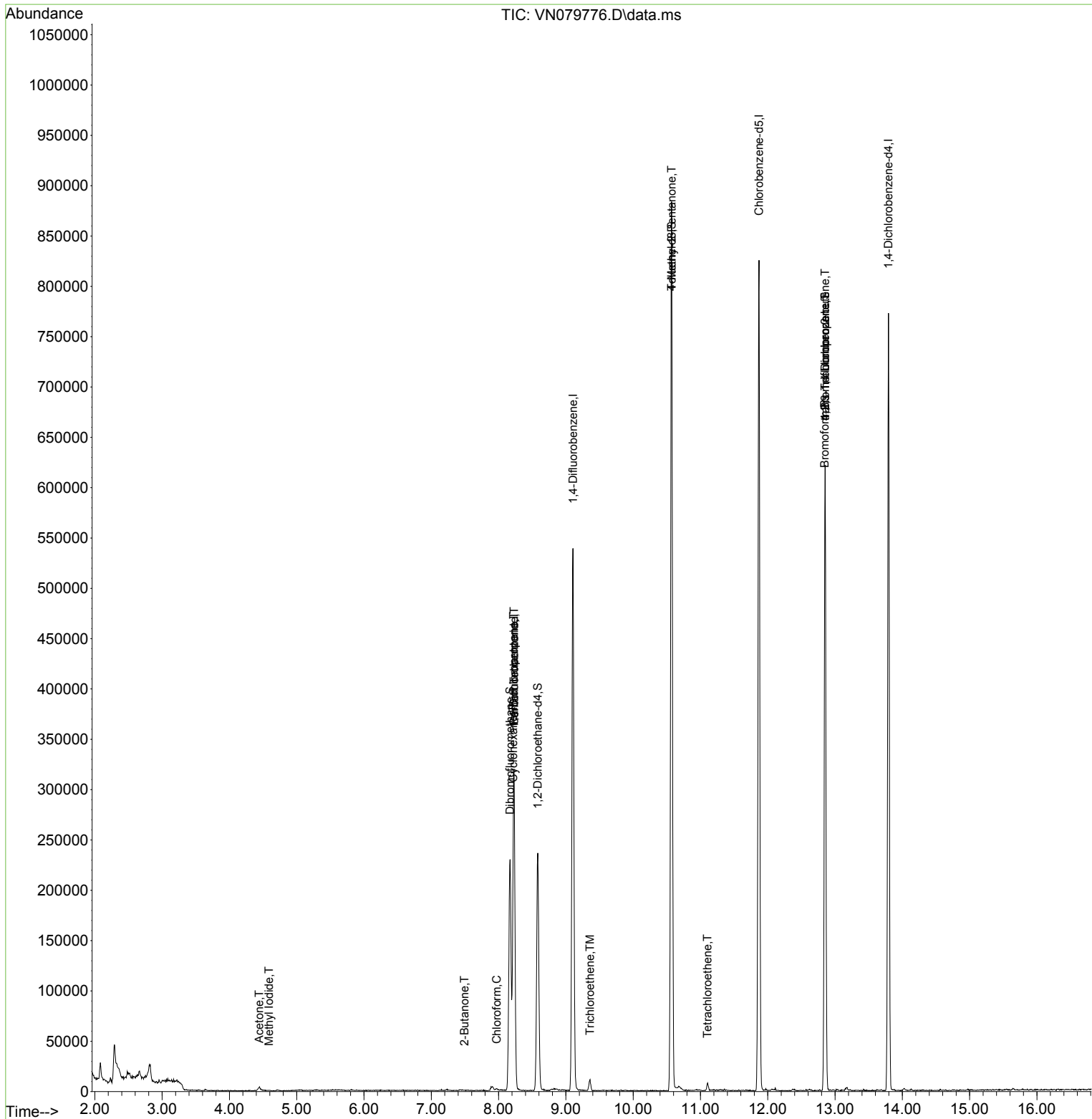
Compound	R.T.	QIon	Response	Conc	Units	Dev(Min)
-----						
Internal Standards						
1) Pentafluorobenzene	8.230	168	232789	50.000	ug/l	0.00
34) 1,4-Difluorobenzene	9.106	114	460599	50.000	ug/l	0.00
63) Chlorobenzene-d5	11.871	117	466849	50.000	ug/l	0.00
72) 1,4-Dichlorobenzene-d4	13.794	152	195362	50.000	ug/l	0.00
System Monitoring Compounds						
33) 1,2-Dichloroethane-d4	8.582	65	190541	53.725	ug/l	0.00
Spiked Amount	50.000	Range	74 - 125	Recovery	=	107.440%
35) Dibromofluoromethane	8.171	113	163653	50.201	ug/l	0.00
Spiked Amount	50.000	Range	75 - 124	Recovery	=	100.400%
50) Toluene-d8	10.571	98	592875	49.402	ug/l	0.00
Spiked Amount	50.000	Range	86 - 113	Recovery	=	98.800%
62) 4-Bromofluorobenzene	12.853	95	205768	51.699	ug/l	0.00
Spiked Amount	50.000	Range	83 - 123	Recovery	=	103.400%
Target Compounds						
					Qvalue	
10) Methyl Iodide	4.589	142	615	0.203	ug/l #	38
16) Acetone	4.442	43	6286	5.046	ug/l	91
25) 2-Butanone	7.494	43	365	0.200	ug/l #	37
30) Chloroform	7.971	83	1216	0.207	ug/l #	55
31) Cyclohexane	8.218	56	6050	1.291	ug/l #	57
36) 1,1-Dichloropropene	8.224	75	20758	4.460	ug/l #	49
38) Carbon Tetrachloride	8.230	117	25025	5.335	ug/l #	17
44) Trichloroethene	9.359	130	3749	1.084	ug/l	85
51) 4-Methyl-2-Pentanone	10.571	43	3250	0.771	ug/l #	1
64) Tetrachloroethene	11.106	164	1456	0.482	ug/l #	74
71) Bromoform	12.847	173	1924	0.743	ug/l #	1
76) 1,2,3-Trichloropropane	12.853	75	115259	25.130	ug/l #	1
81) trans-1,4-Dichloro-2-b...	12.853	75	115259	68.373	ug/l #	15
-----						

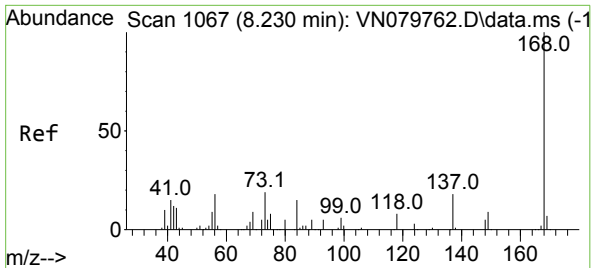
(#) = qualifier out of range (m) = manual integration (+) = signals summed

Data Path : Z:\voasrv\HPCHEM1\MSVOA\_N\Data\VN110123\  
 Data File : VN079776.D  
 Acq On : 01 Nov 2023 17:07  
 Operator : JC\MD  
 Sample : 05173-05  
 Misc : 5.0mL/MSVOA\_N/WATER  
 ALS Vial : 19 Sample Multiplier: 1

Instrument :  
 MSVOA\_N  
 ClientSampleId :  
 BP-VPB-188-GW-200-202

Quant Time: Nov 02 05:57:04 2023  
 Quant Method : Z:\voasrv\HPCHEM1\MSVOA\_N\methods\82N110123W.M  
 Quant Title : SW846 8260  
 QLast Update : Thu Nov 02 05:49:08 2023  
 Response via : Initial Calibration

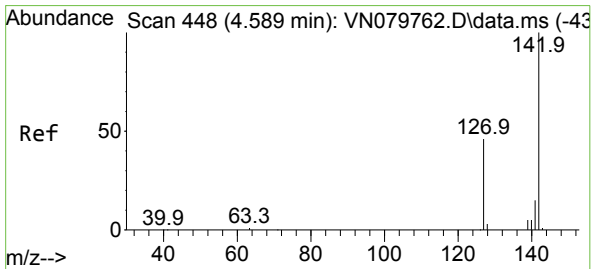
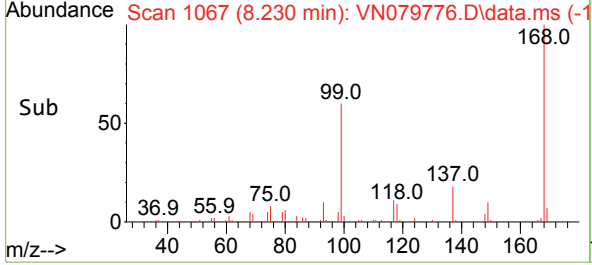
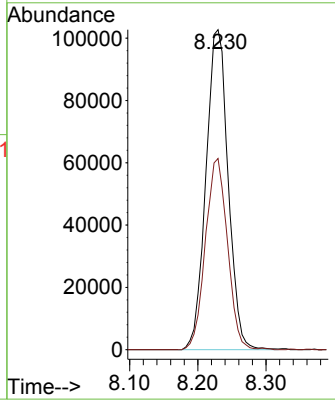
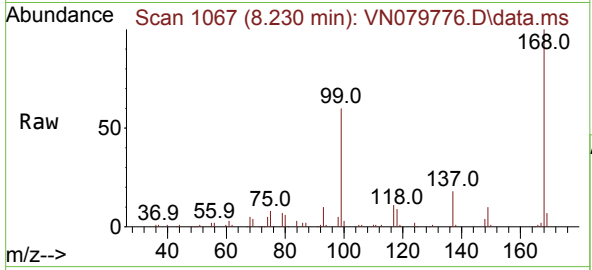




#1  
 Pentafluorobenzene  
 Concen: 50.000 ug/l  
 RT: 8.230 min Scan# 1067  
 Delta R.T. 0.001 min  
 Lab File: VN079776.D  
 Acq: 01 Nov 2023 17:07

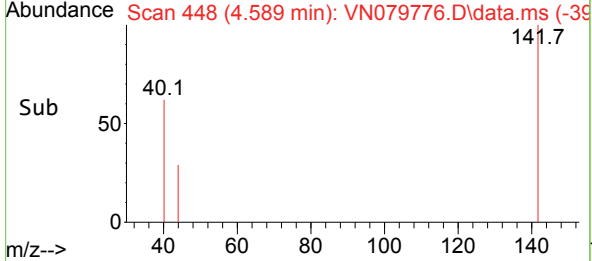
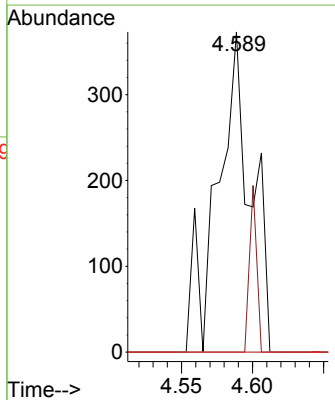
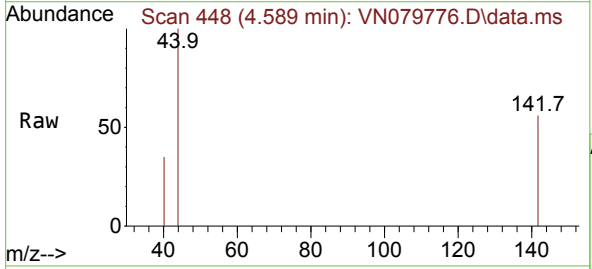
Instrument : MSVOA\_N  
 Client Sample Id : BP-VPB-188-GW-200-202

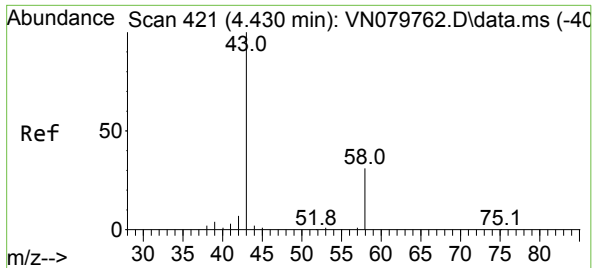
Tgt Ion:168 Resp: 232789  
 Ion Ratio Lower Upper  
 168 100  
 99 59.7 53.0 79.6



#10  
 Methyl Iodide  
 Concen: 0.203 ug/l  
 RT: 4.589 min Scan# 448  
 Delta R.T. -0.006 min  
 Lab File: VN079776.D  
 Acq: 01 Nov 2023 17:07

Tgt Ion:142 Resp: 615  
 Ion Ratio Lower Upper  
 142 100  
 127 0.0 37.6 56.4#  
 141 0.0 11.4 17.0#

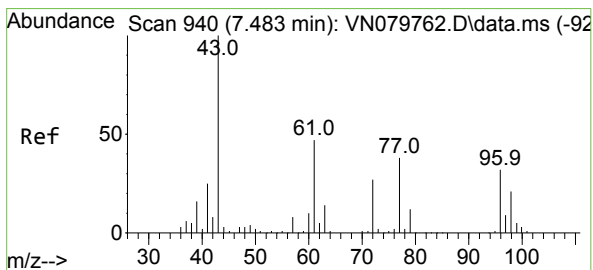
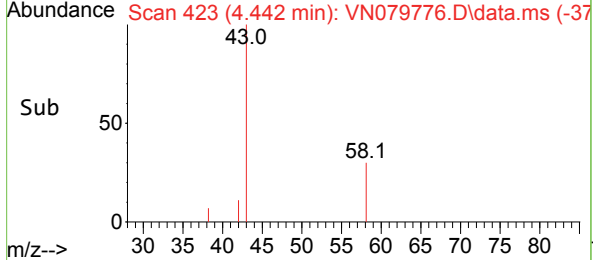
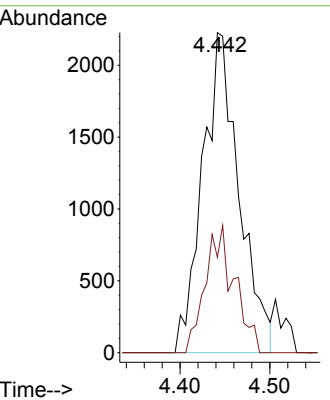
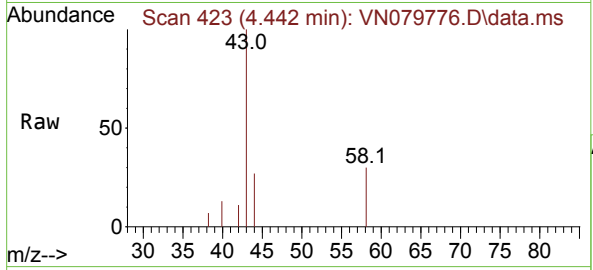




#16  
 Acetone  
 Concen: 5.046 ug/l  
 RT: 4.442 min Scan# 41  
 Delta R.T. 0.012 min  
 Lab File: VN079776.D  
 Acq: 01 Nov 2023 17:07

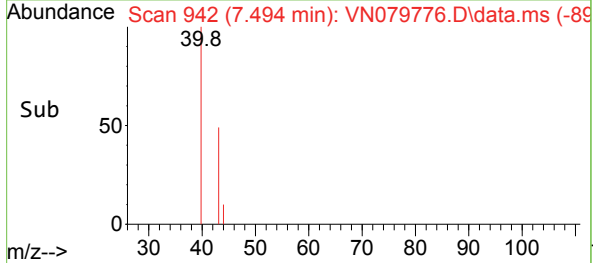
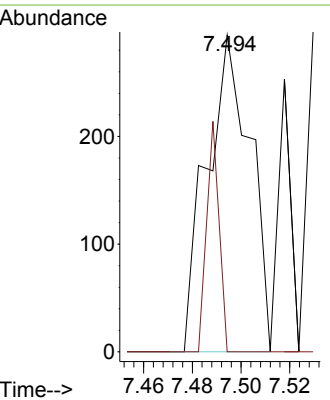
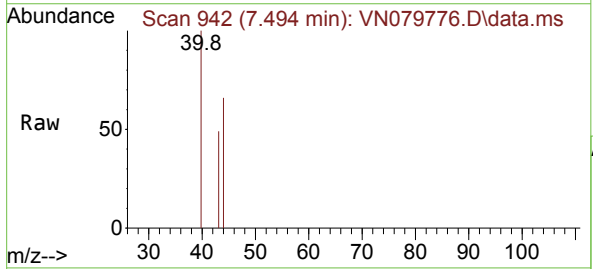
Instrument : MSVOA\_N  
 ClientSampleId : BP-VPB-188-GW-200-202

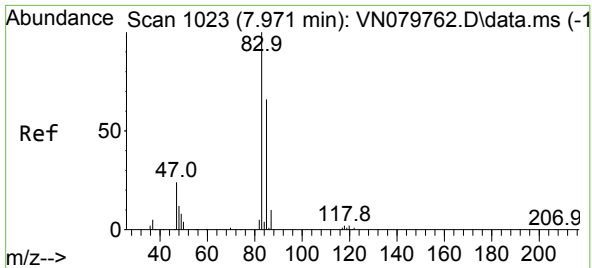
Tgt Ion: 43 Resp: 6286  
 Ion Ratio Lower Upper  
 43 100  
 58 29.8 28.0 42.0



#25  
 2-Butanone  
 Concen: 0.200 ug/l  
 RT: 7.494 min Scan# 942  
 Delta R.T. 0.006 min  
 Lab File: VN079776.D  
 Acq: 01 Nov 2023 17:07

Tgt Ion: 43 Resp: 365  
 Ion Ratio Lower Upper  
 43 100  
 72 0.0 30.2 45.2#

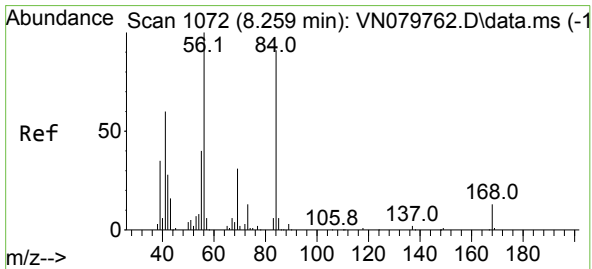
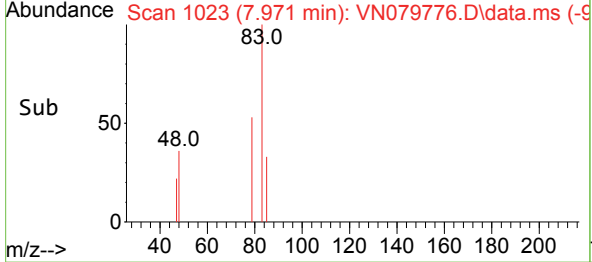
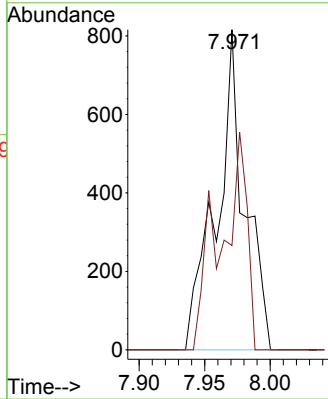
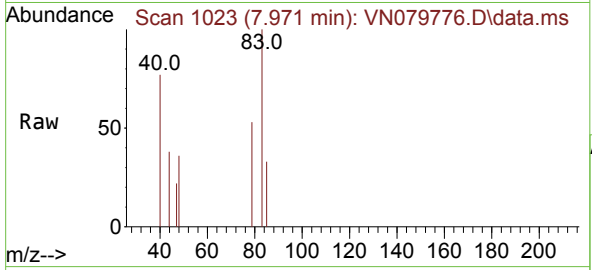




#30  
 Chloroform  
 Concen: 0.207 ug/l  
 RT: 7.971 min Scan# 1065  
 Delta R.T. 0.000 min  
 Lab File: VN079776.D  
 Acq: 01 Nov 2023 17:07

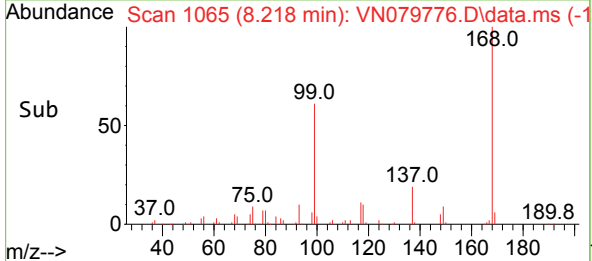
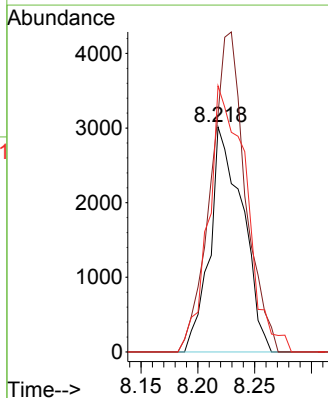
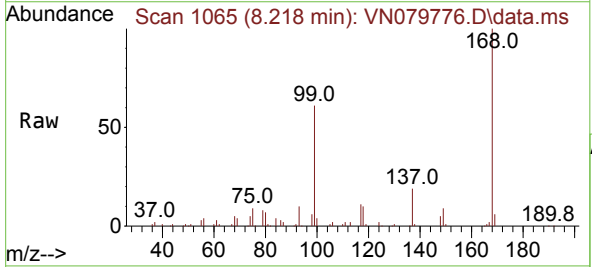
Instrument : MSVOA\_N  
 ClientSampleId : BP-VPB-188-GW-200-202

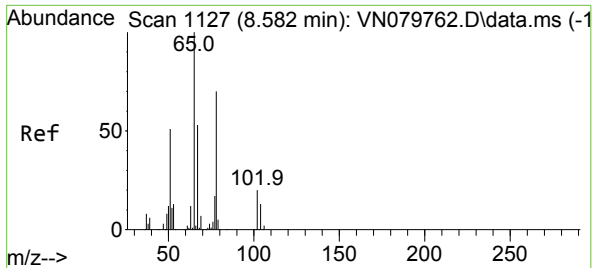
Tgt Ion: 83 Resp: 1216  
 Ion Ratio Lower Upper  
 83 100  
 85 32.6 55.4 83.0#



#31  
 Cyclohexane  
 Concen: 1.291 ug/l  
 RT: 8.218 min Scan# 1065  
 Delta R.T. -0.041 min  
 Lab File: VN079776.D  
 Acq: 01 Nov 2023 17:07

Tgt Ion: 56 Resp: 6050  
 Ion Ratio Lower Upper  
 56 100  
 69 105.6 26.8 40.2#  
 84 118.2 81.8 122.6

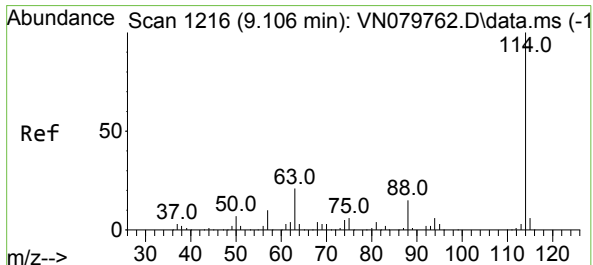
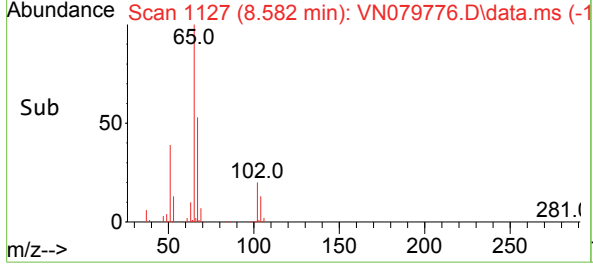
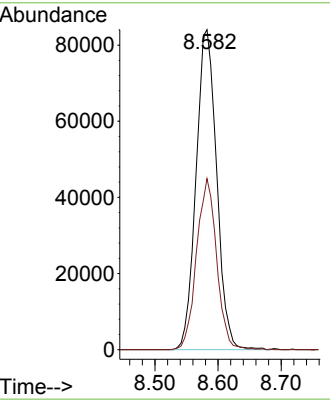
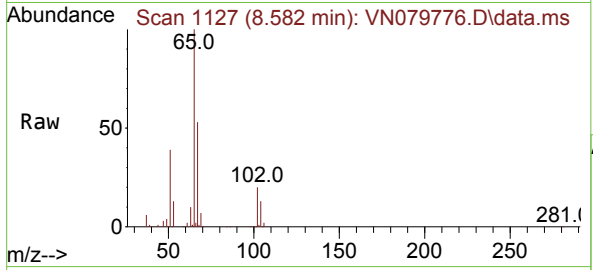




#33  
 1,2-Dichloroethane-d4  
 Concen: 53.725 ug/l  
 RT: 8.582 min Scan# 1127  
 Delta R.T. 0.000 min  
 Lab File: VN079776.D  
 Acq: 01 Nov 2023 17:07

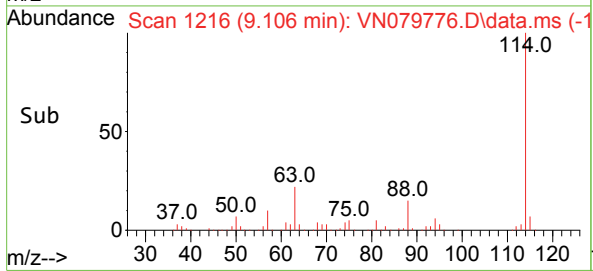
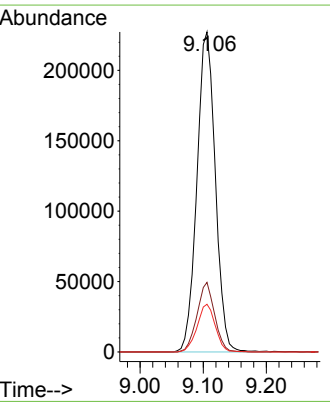
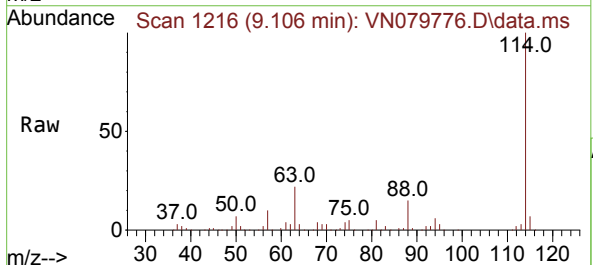
Instrument : MSVOA\_N  
 ClientSampleId : BP-VPB-188-GW-200-202

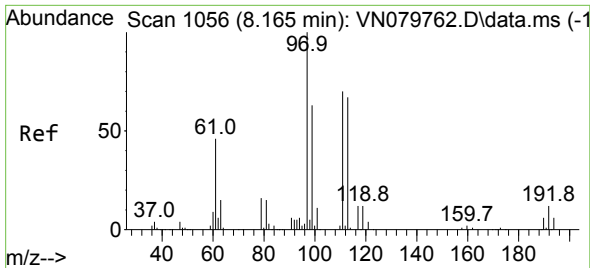
Tgt Ion: 65 Resp: 190541  
 Ion Ratio Lower Upper  
 65 100  
 67 52.2 0.0 106.6



#34  
 1,4-Difluorobenzene  
 Concen: 50.000 ug/l  
 RT: 9.106 min Scan# 1216  
 Delta R.T. 0.000 min  
 Lab File: VN079776.D  
 Acq: 01 Nov 2023 17:07

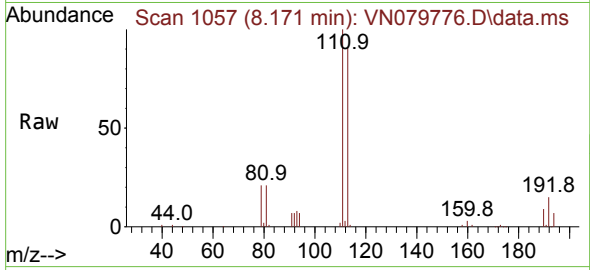
Tgt Ion: 114 Resp: 460599  
 Ion Ratio Lower Upper  
 114 100  
 63 21.7 0.0 36.4  
 88 14.9 0.0 30.6



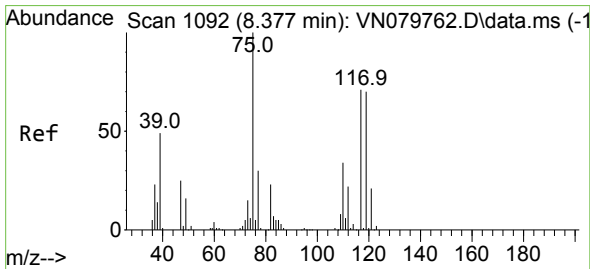
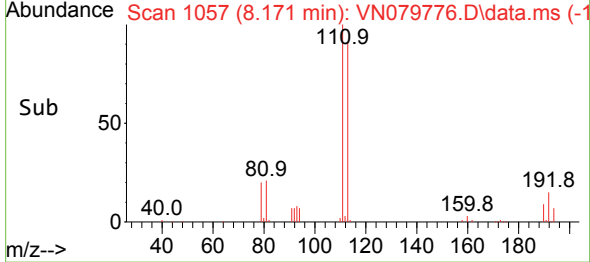
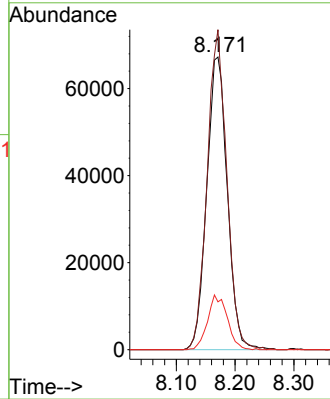


#35  
 Dibromofluoromethane  
 Concen: 50.201 ug/l  
 RT: 8.171 min Scan# 1065  
 Delta R.T. 0.000 min  
 Lab File: VN079776.D  
 Acq: 01 Nov 2023 17:07

Instrument : MSVOA\_N  
 ClientSampleId : BP-VPB-188-GW-200-202

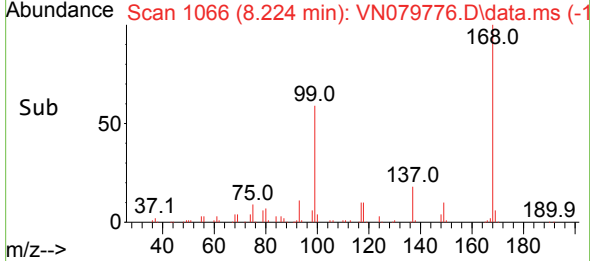
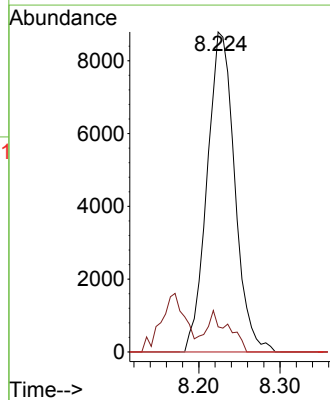
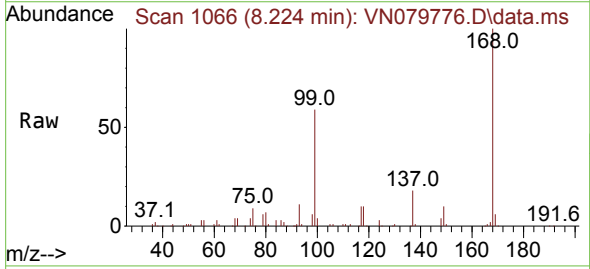


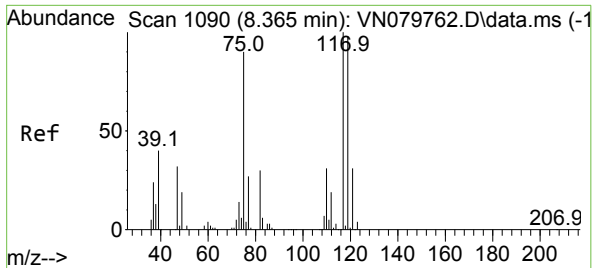
Tgt Ion:113 Resp: 163653  
 Ion Ratio Lower Upper  
 113 100  
 111 104.2 82.6 123.8  
 192 17.9 12.7 19.1



#36  
 1,1-Dichloropropene  
 Concen: 4.460 ug/l  
 RT: 8.224 min Scan# 1066  
 Delta R.T. -0.153 min  
 Lab File: VN079776.D  
 Acq: 01 Nov 2023 17:07

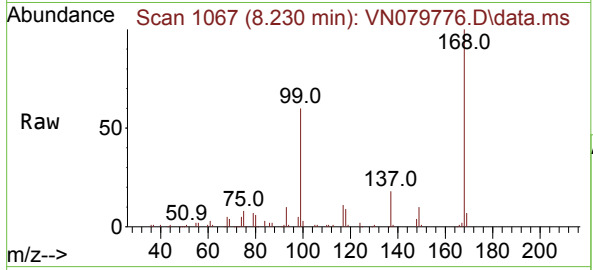
Tgt Ion: 75 Resp: 20758  
 Ion Ratio Lower Upper  
 75 100  
 110 9.9 19.1 57.3#  
 77 0.0 25.0 37.4#



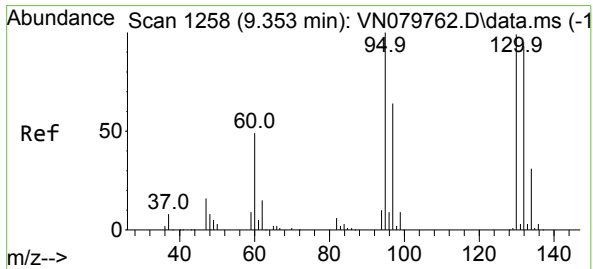
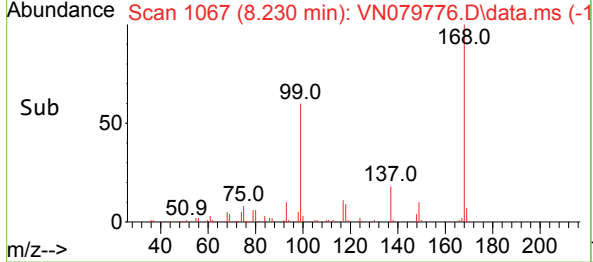
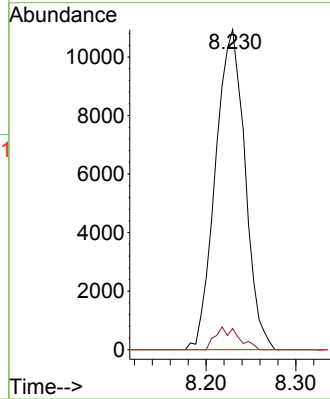


#38  
 Carbon Tetrachloride  
 Concen: 5.335 ug/l  
 RT: 8.230 min Scan# 1067  
 Delta R.T. -0.129 min  
 Lab File: VN079776.D  
 Acq: 01 Nov 2023 17:07

Instrument : MSVOA\_N  
 ClientSampleId : BP-VPB-188-GW-200-202

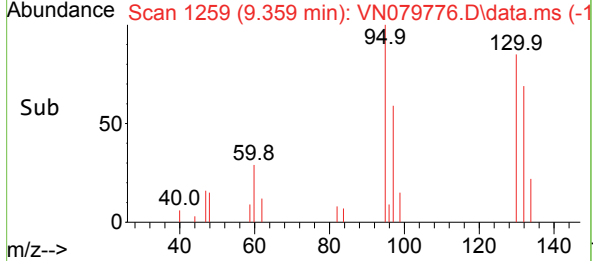
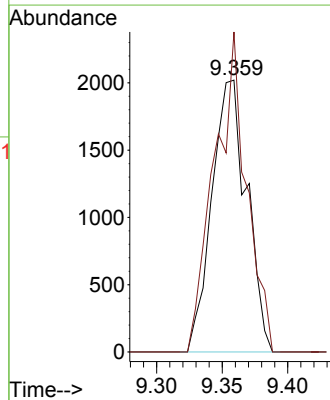
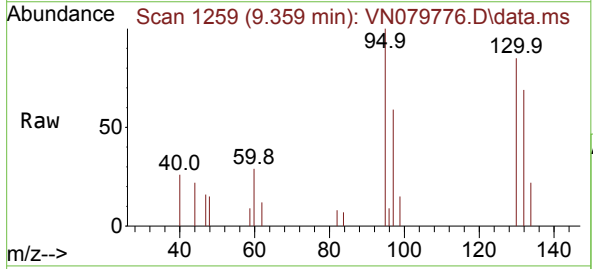


Tgt Ion:117 Resp: 25025  
 Ion Ratio Lower Upper  
 117 100  
 119 6.6 77.3 115.9#  
 121 0.0 23.3 34.9#

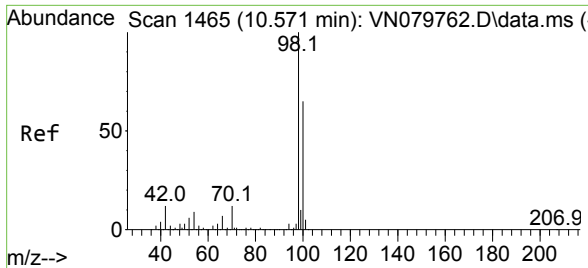


#44  
 Trichloroethene  
 Concen: 1.084 ug/l  
 RT: 9.359 min Scan# 1259  
 Delta R.T. 0.006 min  
 Lab File: VN079776.D  
 Acq: 01 Nov 2023 17:07

Tgt Ion:130 Resp: 3749  
 Ion Ratio Lower Upper  
 130 100  
 95 117.7 0.0 204.6



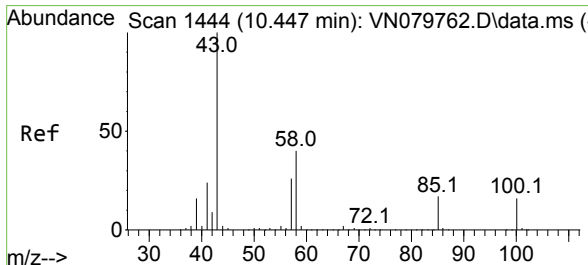
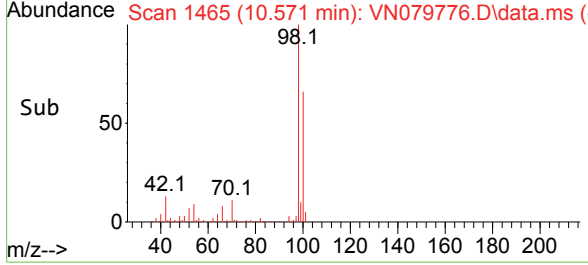
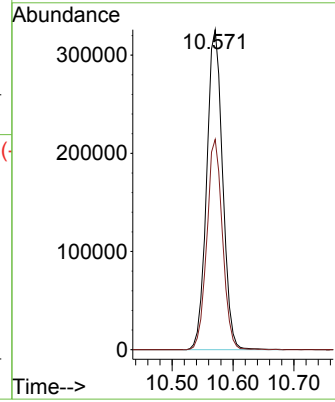
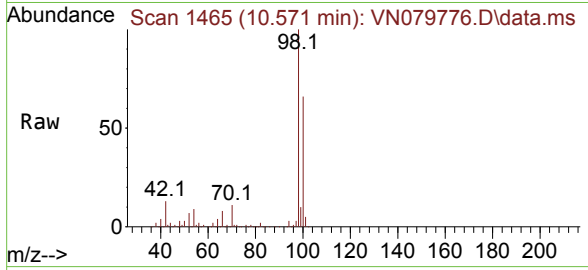




#50  
 Toluene-d8  
 Concen: 49.402 ug/l  
 RT: 10.571 min Scan# 1465  
 Delta R.T. 0.000 min  
 Lab File: VN079776.D  
 Acq: 01 Nov 2023 17:07

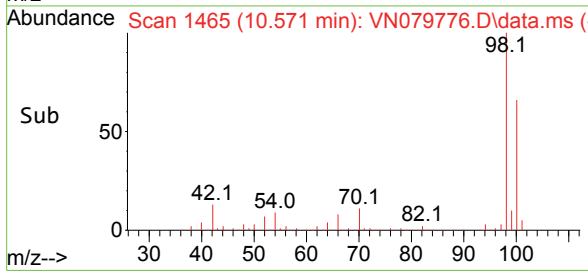
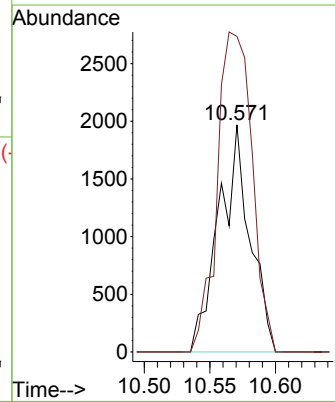
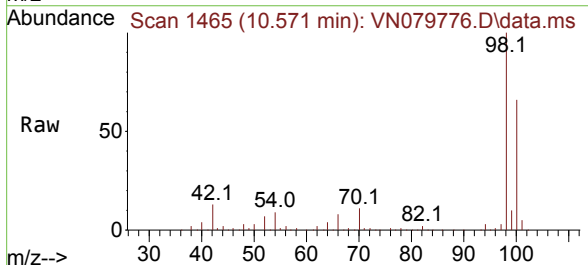
**Instrument :**  
 MSVOA\_N  
**ClientSampleId :**  
 BP-VPB-188-GW-200-202

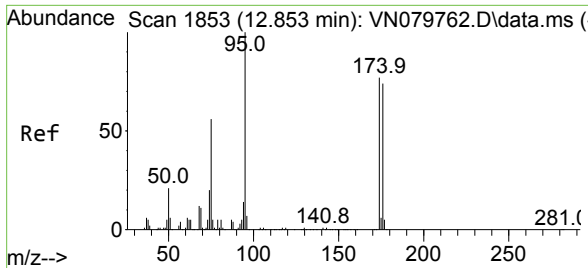
Tgt Ion: 98 Resp: 592875  
 Ion Ratio Lower Upper  
 98 100  
 100 64.4 52.0 78.0



#51  
 4-Methyl-2-Pentanone  
 Concen: 0.771 ug/l  
 RT: 10.571 min Scan# 1465  
 Delta R.T. 0.124 min  
 Lab File: VN079776.D  
 Acq: 01 Nov 2023 17:07

Tgt Ion: 43 Resp: 3250  
 Ion Ratio Lower Upper  
 43 100  
 58 157.9 36.6 54.8#



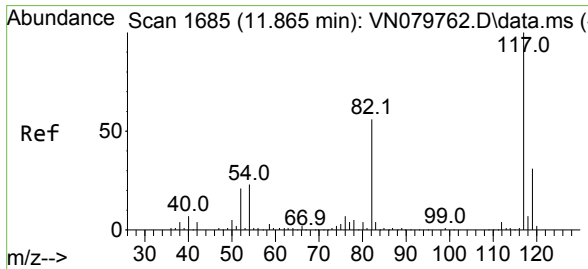
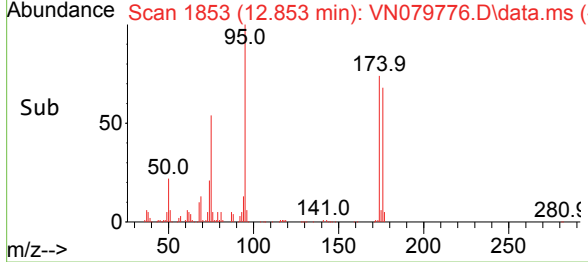
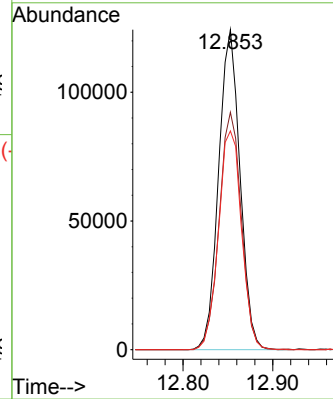
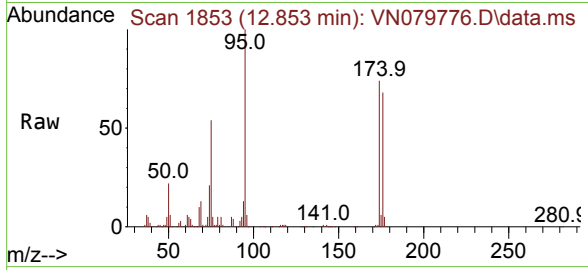


#62  
 4-Bromofluorobenzene  
 Concen: 51.699 ug/l  
 RT: 12.853 min Scan# 1853  
 Delta R.T. 0.000 min  
 Lab File: VN079776.D  
 Acq: 01 Nov 2023 17:07

Instrument : MSVOA\_N  
 ClientSampleId : BP-VPB-188-GW-200-202

Tgt Ion: 95 Resp: 205768

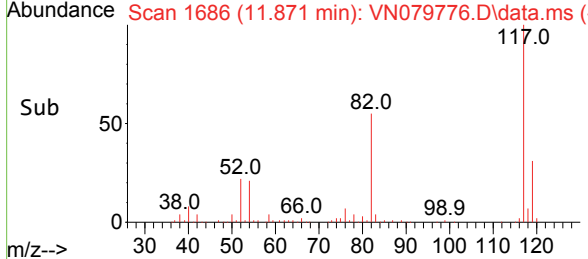
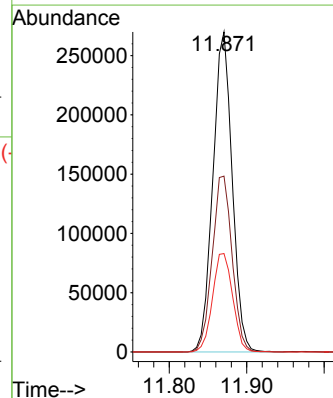
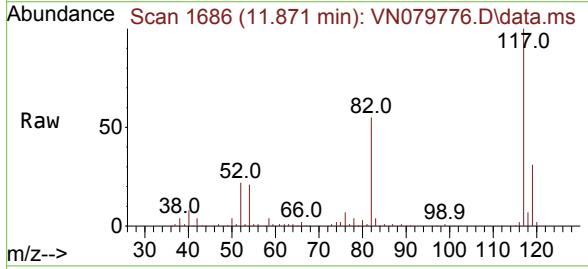
Ion	Ratio	Lower	Upper
95	100		
174	77.1	0.0	143.8
176	73.8	0.0	135.8

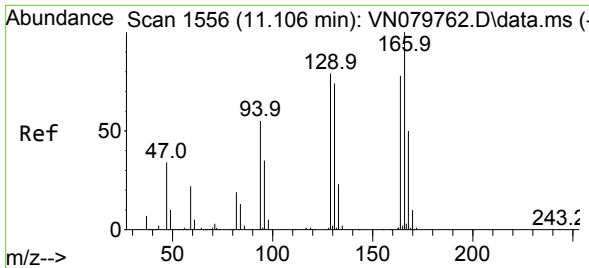


#63  
 Chlorobenzene-d5  
 Concen: 50.000 ug/l  
 RT: 11.871 min Scan# 1686  
 Delta R.T. 0.000 min  
 Lab File: VN079776.D  
 Acq: 01 Nov 2023 17:07

Tgt Ion: 117 Resp: 466849

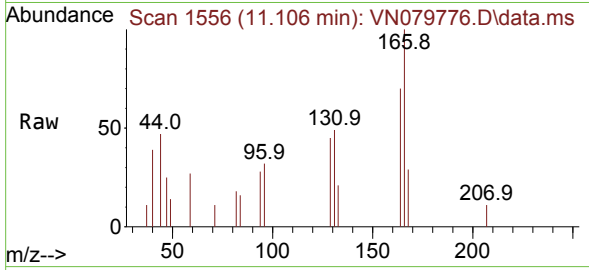
Ion	Ratio	Lower	Upper
117	100		
82	54.9	44.0	66.0
119	30.8	25.6	38.4



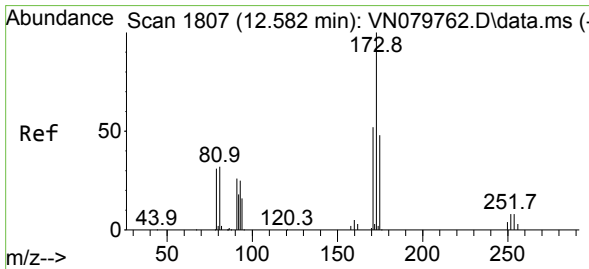
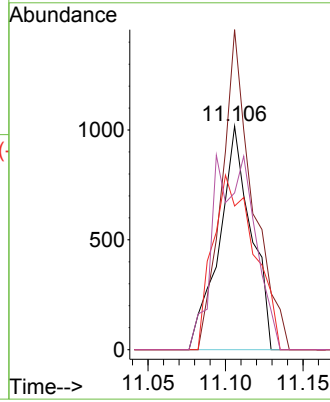
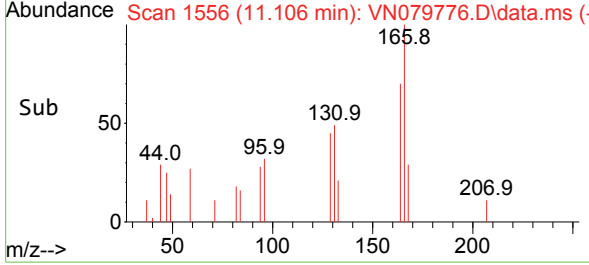


#64  
 Tetrachloroethene  
 Concen: 0.482 ug/l  
 RT: 11.106 min Scan# 1111  
 Delta R.T. 0.000 min  
 Lab File: VN079776.D  
 Acq: 01 Nov 2023 17:07

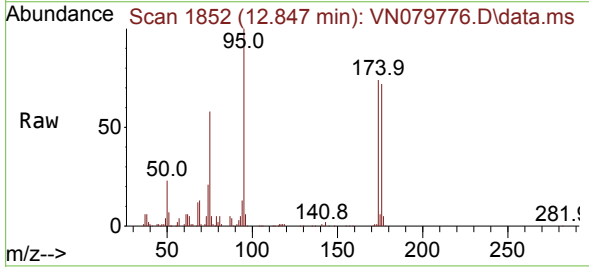
Instrument : MSVOA\_N  
 ClientSampleId : BP-VPB-188-GW-200-202



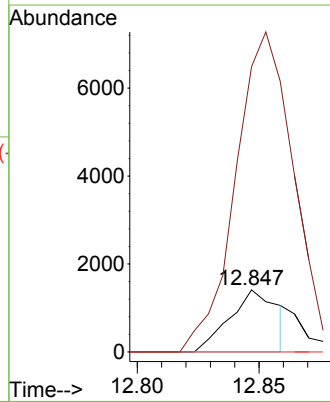
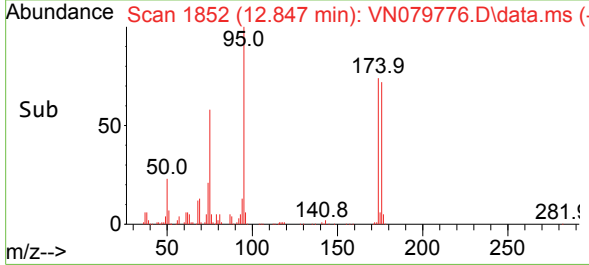
Tgt Ion:164 Resp: 1456  
 Ion Ratio Lower Upper  
 164 100  
 166 143.1 101.4 152.0  
 129 64.2 82.4 123.6#  
 131 70.1 78.2 117.4#

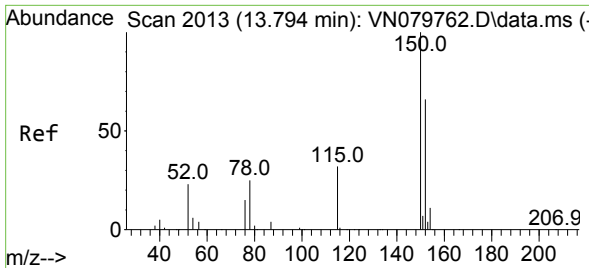


#71  
 Bromoform  
 Concen: 0.743 ug/l  
 RT: 12.847 min Scan# 1852  
 Delta R.T. 0.265 min  
 Lab File: VN079776.D  
 Acq: 01 Nov 2023 17:07



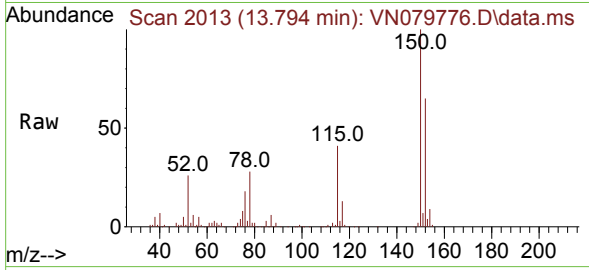
Tgt Ion:173 Resp: 1924  
 Ion Ratio Lower Upper  
 173 100  
 175 501.5 24.3 73.0#  
 254 0.0 0.0 0.0



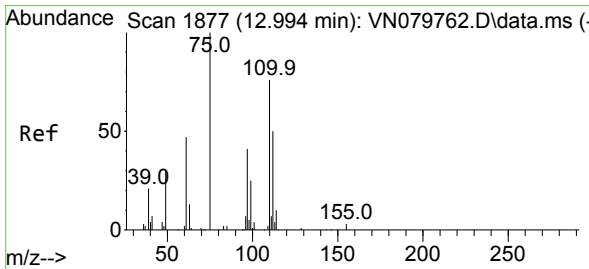
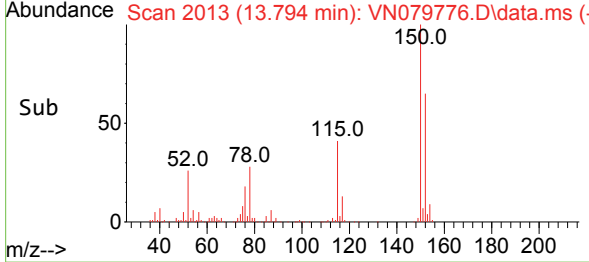
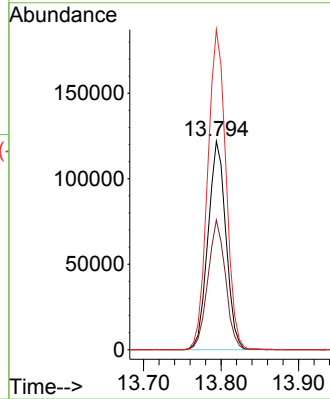


#72  
 1,4-Dichlorobenzene-d4  
 Concen: 50.000 ug/l  
 RT: 13.794 min Scan# 2013  
 Delta R.T. 0.000 min  
 Lab File: VN079776.D  
 Acq: 01 Nov 2023 17:07

**Instrument :**  
 MSVOA\_N  
**ClientSampleId :**  
 BP-VPB-188-GW-200-202

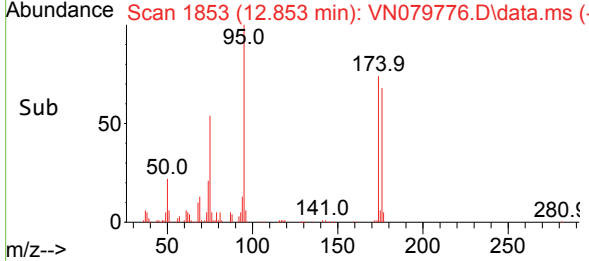
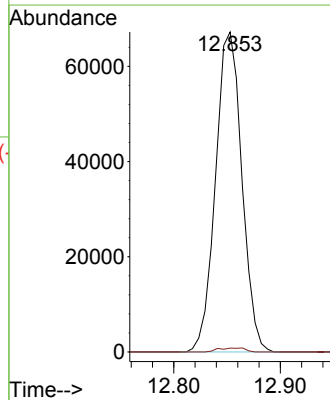
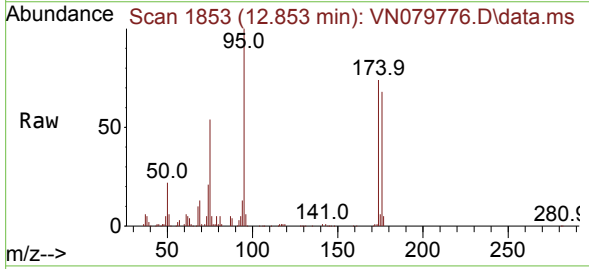


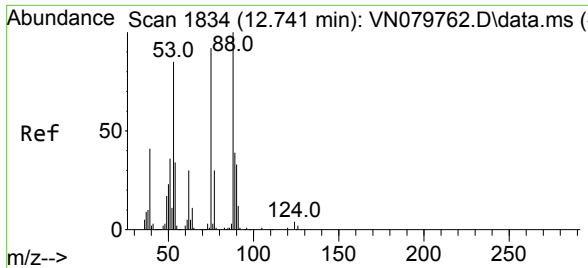
Tgt Ion:152 Resp: 195362  
 Ion Ratio Lower Upper  
 152 100  
 115 61.4 32.3 96.8  
 150 156.9 0.0 355.8



#76  
 1,2,3-Trichloropropane  
 Concen: 25.130 ug/l  
 RT: 12.853 min Scan# 1853  
 Delta R.T. -0.141 min  
 Lab File: VN079776.D  
 Acq: 01 Nov 2023 17:07

Tgt Ion: 75 Resp: 115259  
 Ion Ratio Lower Upper  
 75 100  
 77 1.3 84.5 253.5#





#81  
 trans-1,4-Dichloro-2-butene  
 Concen: 68.373 ug/l  
 RT: 12.853 min Scan# 11  
 Delta R.T. 0.118 min  
 Lab File: VN079776.D  
 Acq: 01 Nov 2023 17:07

Instrument : MSVOA\_N  
 ClientSampleId : BP-VPB-188-GW-200-202

Tgt Ion: 75 Resp: 115259

Ion	Ratio	Lower	Upper
75	100		
53	0.0	67.4	101.2#
89	0.1	38.8	58.2#

