

Data Path : Z:\voasrv\HPCHEM1\MSVOA_N\Data\VN110323\
 Data File : VN079843.D
 Acq On : 03 Nov 2023 12:53
 Operator : JC\MD
 Sample : 05224-04RE
 Misc : 5.0mL/MSVOA_N/WATER
 ALS Vial : 7 Sample Multiplier: 1

Instrument :
 MSVOA_N
 ClientSampleId :
 BP-VPB-188-GW-260-262

Quant Time: Nov 04 00:51:04 2023
 Quant Method : Z:\voasrv\HPCHEM1\MSVOA_N\methods\82N110123W.M
 Quant Title : SW846 8260
 QLast Update : Thu Nov 02 05:49:08 2023
 Response via : Initial Calibration

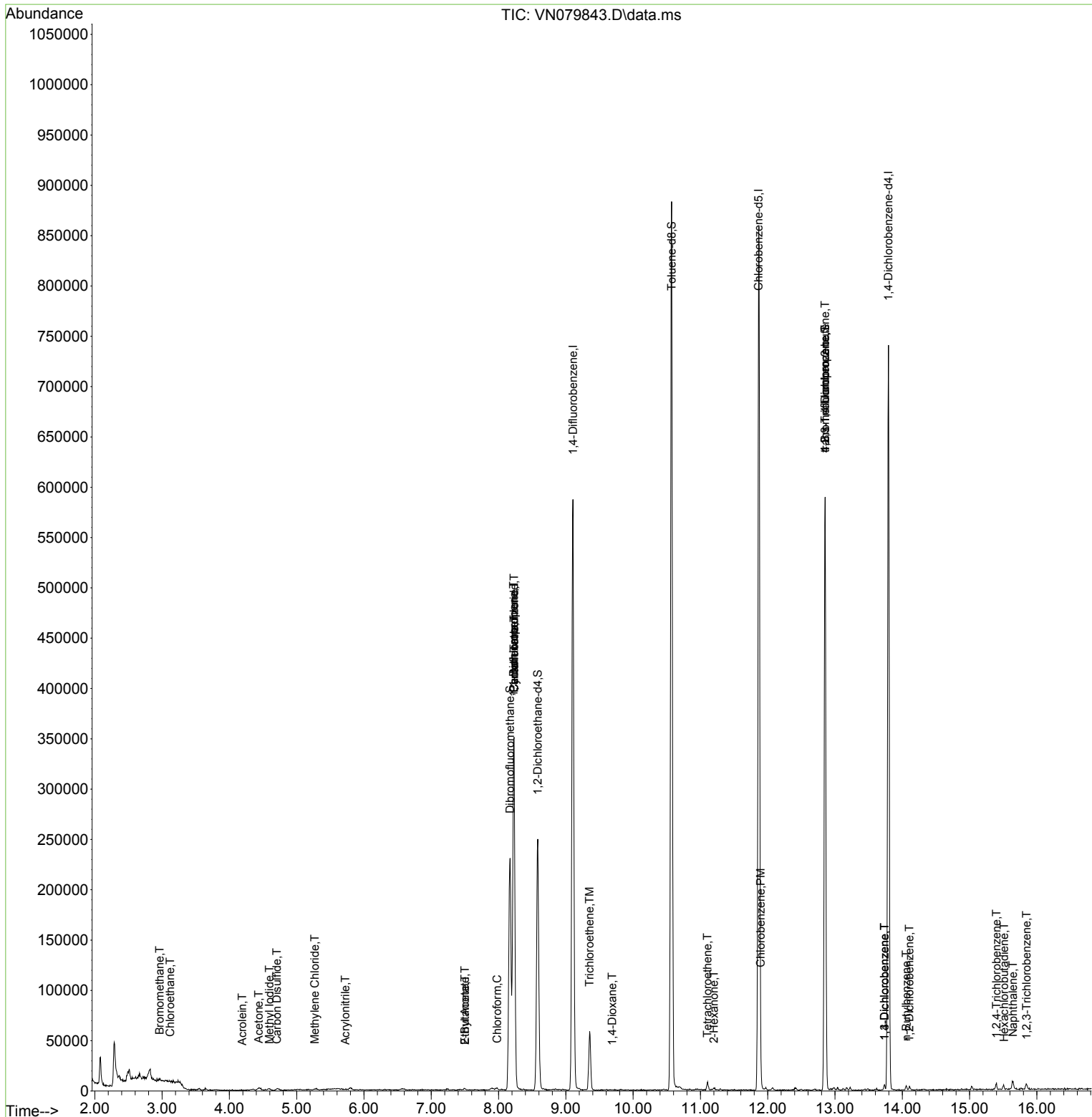
Compound	R.T.	QIon	Response	Conc	Units	Dev(Min)
Internal Standards						
1) Pentafluorobenzene	8.230	168	247152	50.000	ug/l	0.00
34) 1,4-Difluorobenzene	9.106	114	487962	50.000	ug/l	0.00
63) Chlorobenzene-d5	11.865	117	479164	50.000	ug/l	0.00
72) 1,4-Dichlorobenzene-d4	13.794	152	185522	50.000	ug/l	0.00
System Monitoring Compounds						
33) 1,2-Dichloroethane-d4	8.583	65	200993	53.378	ug/l	0.00
Spiked Amount	50.000	Range 74 - 125	Recovery	=	106.760%	
35) Dibromofluoromethane	8.171	113	165827	48.016	ug/l	0.00
Spiked Amount	50.000	Range 75 - 124	Recovery	=	96.040%	
50) Toluene-d8	10.571	98	592409	46.595	ug/l	0.00
Spiked Amount	50.000	Range 86 - 113	Recovery	=	93.200%	
62) 4-Bromofluorobenzene	12.853	95	196728	46.656	ug/l	0.00
Spiked Amount	50.000	Range 83 - 123	Recovery	=	93.320%	
Target Compounds						
						Qvalue
5) Bromomethane	2.965	94	1484	0.627	ug/l	85
6) Chloroethane	3.118	64	668	0.217	ug/l #	43
10) Methyl Iodide	4.595	142	2555	0.796	ug/l #	70
13) Acrolein	4.189	56	74	2.742	ug/l #	16
15) Acrylonitrile	5.724	53	390	0.260	ug/l #	77
16) Acetone	4.436	43	4107	3.105	ug/l #	78
17) Carbon Disulfide	4.706	76	1616	0.211	ug/l #	75
20) Methylene Chloride	5.271	84	800	0.240	ug/l #	67
25) 2-Butanone	7.500	43	1062	0.548	ug/l #	87
30) Chloroform	7.977	83	1826	0.293	ug/l	94
31) Cyclohexane	8.230	56	7196	1.446	ug/l #	42
36) 1,1-Dichloropropene	8.224	75	23181	4.701	ug/l #	49
37) Ethyl Acetate	7.500	43	1062	0.235	ug/l #	54
38) Carbon Tetrachloride	8.230	117	27537	5.541	ug/l #	14
44) Trichloroethene	9.353	130	19570	5.340	ug/l	96
49) 1,4-Dioxane	9.688	88	137	2.232	ug/l #	30
59) 2-Hexanone	11.200	43	1654	0.484	ug/l	71
64) Tetrachloroethene	11.106	164	1595	0.514	ug/l #	73
65) Chlorobenzene	11.894	112	4071	0.392	ug/l	96
76) 1,2,3-Trichloropropane	12.853	75	108966	25.018	ug/l #	1
81) trans-1,4-Dichloro-2-b...	12.853	75	108966	68.068	ug/l #	15
87) 1,3-Dichlorobenzene	13.735	146	1547	0.241	ug/l	73
88) 1,4-Dichlorobenzene	13.735	146	1547	0.238	ug/l	74
89) n-Butylbenzene	14.059	91	2865	0.328	ug/l #	76
91) 1,2-Dichlorobenzene	14.106	146	1464	0.242	ug/l	93
93) 1,2,4-Trichlorobenzene	15.400	180	1937	0.673	ug/l	88
94) Hexachlorobutadiene	15.512	225	1093	0.838	ug/l	97
95) Naphthalene	15.647	128	8405	0.861	ug/l	98
96) 1,2,3-Trichlorobenzene	15.847	180	2240	0.794	ug/l	90

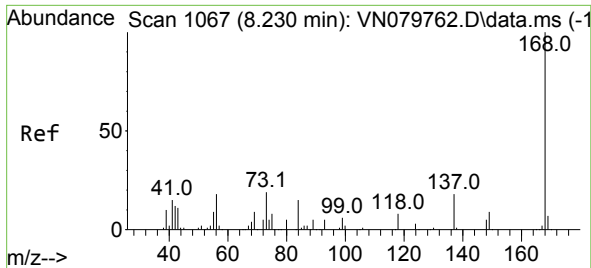
(#) = qualifier out of range (m) = manual integration (+) = signals summed

Data Path : Z:\voasrv\HPCHEM1\MSVOA_N\Data\VN110323\
 Data File : VN079843.D
 Acq On : 03 Nov 2023 12:53
 Operator : JC\MD
 Sample : 05224-04RE
 Misc : 5.0mL/MSVOA_N/WATER
 ALS Vial : 7 Sample Multiplier: 1

Instrument :
 MSVOA_N
 ClientSampleId :
 BP-VPB-188-GW-260-262

Quant Time: Nov 04 00:51:04 2023
 Quant Method : Z:\voasrv\HPCHEM1\MSVOA_N\methods\82N110123W.M
 Quant Title : SW846 8260
 QLast Update : Thu Nov 02 05:49:08 2023
 Response via : Initial Calibration

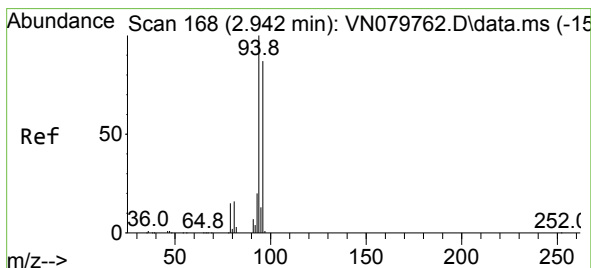
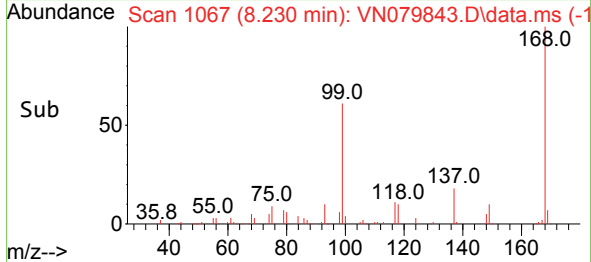
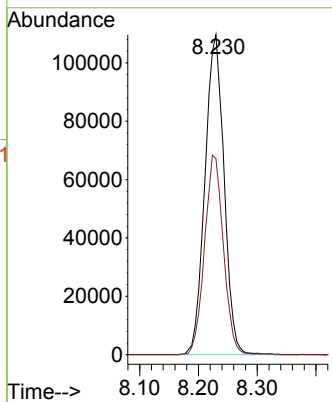
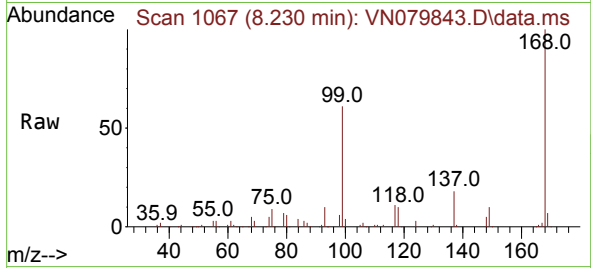




#1
 Pentafluorobenzene
 Concen: 50.000 ug/l
 RT: 8.230 min Scan# 11
 Delta R.T. 0.001 min
 Lab File: VN079843.D
 Acq: 03 Nov 2023 12:53

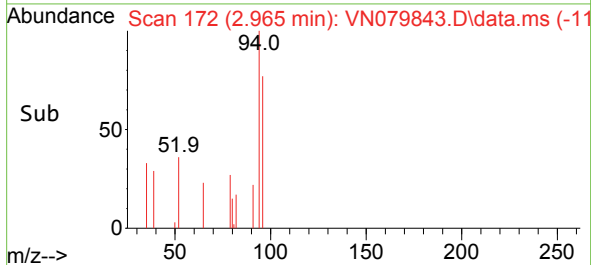
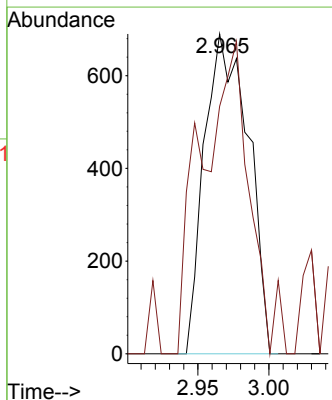
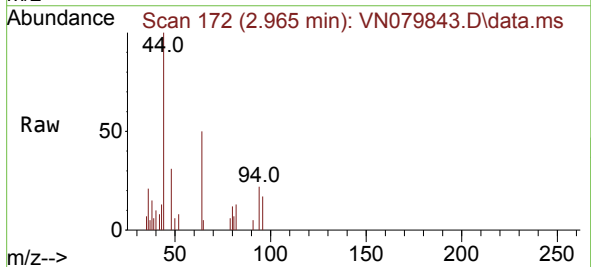
Instrument :
 MSVOA_N
 ClientSampleId :
 BP-VPB-188-GW-260-262

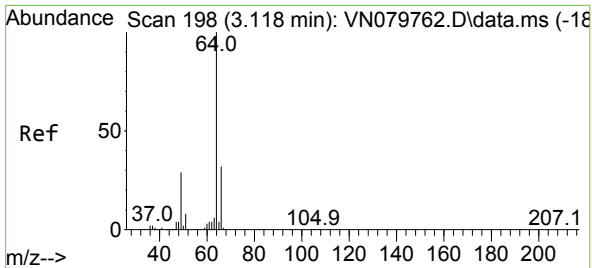
Tgt Ion:168 Resp: 247152
 Ion Ratio Lower Upper
 168 100
 99 61.3 53.0 79.6



#5
 Bromomethane
 Concen: 0.627 ug/l
 RT: 2.965 min Scan# 172
 Delta R.T. 0.012 min
 Lab File: VN079843.D
 Acq: 03 Nov 2023 12:53

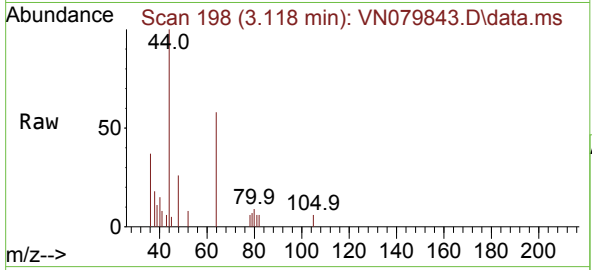
Tgt Ion: 94 Resp: 1484
 Ion Ratio Lower Upper
 94 100
 96 77.4 73.1 109.7



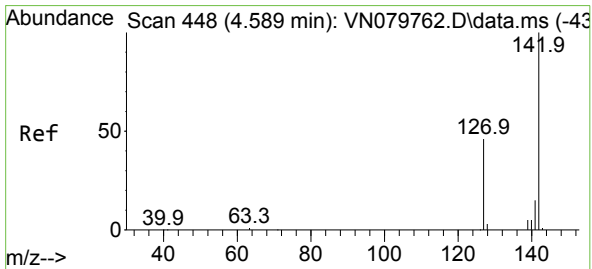
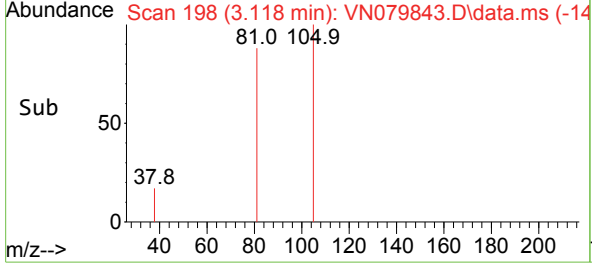
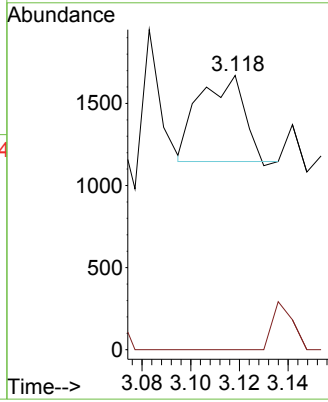


#6
 Chloroethane
 Concen: 0.217 ug/l
 RT: 3.118 min Scan# 198
 Delta R.T. 0.000 min
 Lab File: VN079843.D
 Acq: 03 Nov 2023 12:53

Instrument : MSVOA_N
 ClientSampleId : BP-VPB-188-GW-260-262

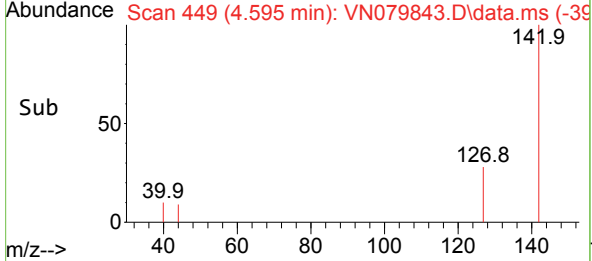
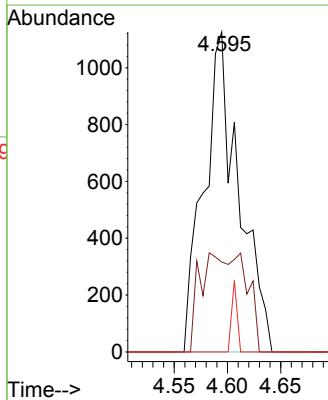
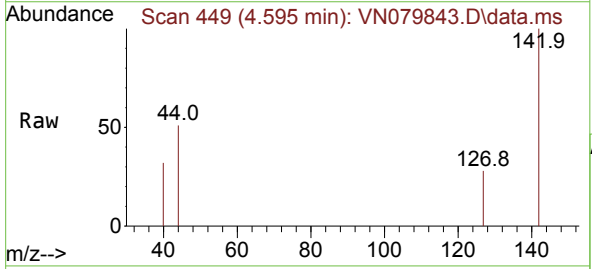


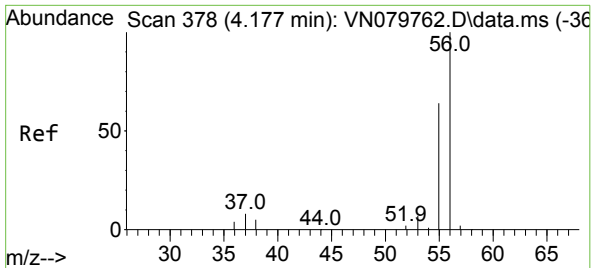
Tgt Ion: 64 Resp: 668
 Ion Ratio Lower Upper
 64 100
 66 0.0 25.4 38.2#



#10
 Methyl Iodide
 Concen: 0.796 ug/l
 RT: 4.595 min Scan# 449
 Delta R.T. 0.000 min
 Lab File: VN079843.D
 Acq: 03 Nov 2023 12:53

Tgt Ion: 142 Resp: 2555
 Ion Ratio Lower Upper
 142 100
 127 28.1 37.6 56.4#
 141 0.0 11.4 17.0#

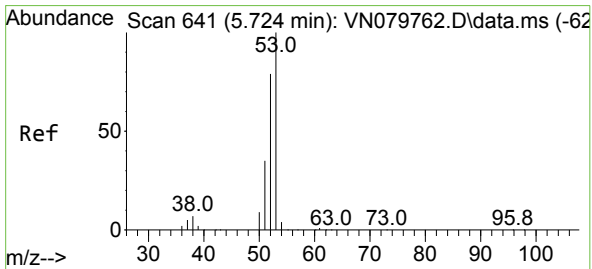
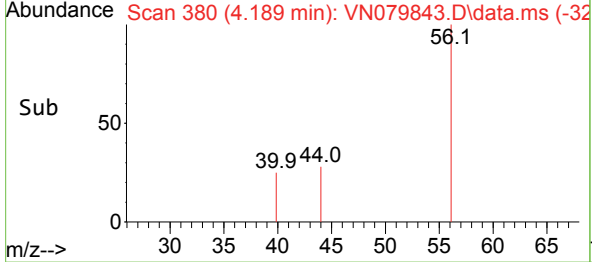
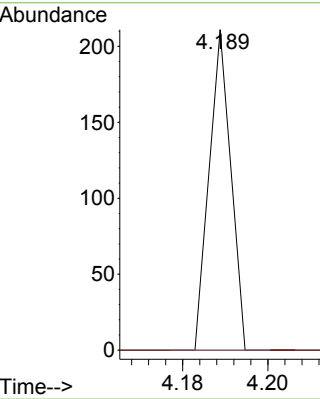
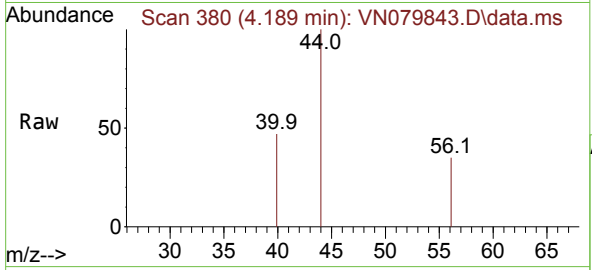




#13
 Acrolein
 Concen: 2.742 ug/l
 RT: 4.189 min Scan# 31
 Delta R.T. 0.006 min
 Lab File: VN079843.D
 Acq: 03 Nov 2023 12:53

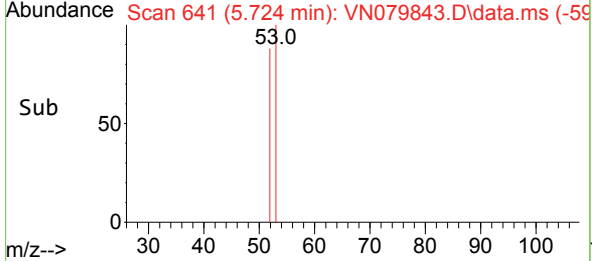
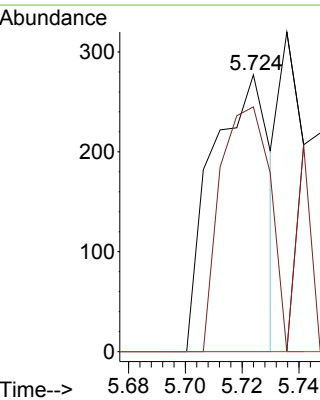
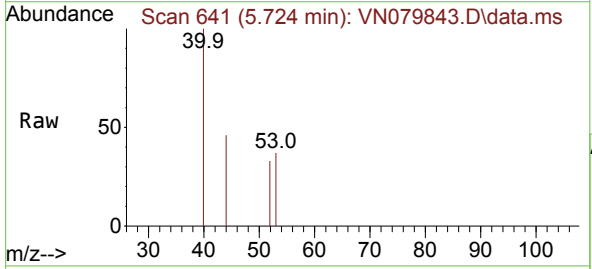
Instrument : MSVOA_N
 ClientSampleId : BP-VPB-188-GW-260-262

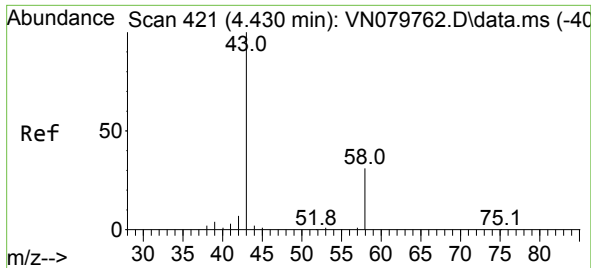
Tgt Ion: 56 Resp: 74
 Ion Ratio Lower Upper
 56 100
 55 0.0 54.5 81.7#



#15
 Acrylonitrile
 Concen: 0.260 ug/l
 RT: 5.724 min Scan# 641
 Delta R.T. 0.000 min
 Lab File: VN079843.D
 Acq: 03 Nov 2023 12:53

Tgt Ion: 53 Resp: 390
 Ion Ratio Lower Upper
 53 100
 52 76.4 65.3 97.9
 51 0.0 28.9 43.3#

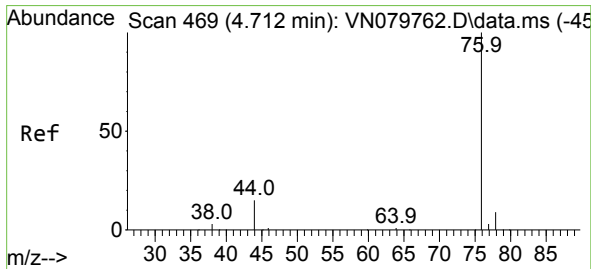
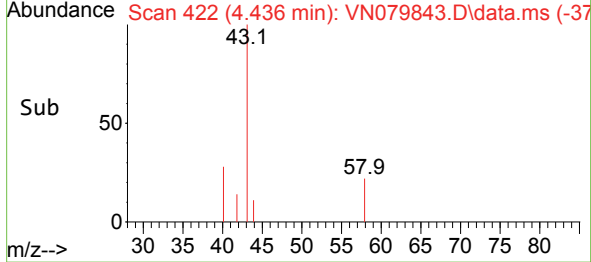
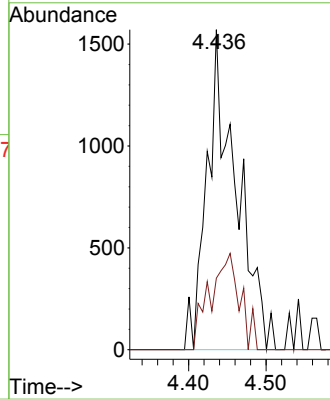
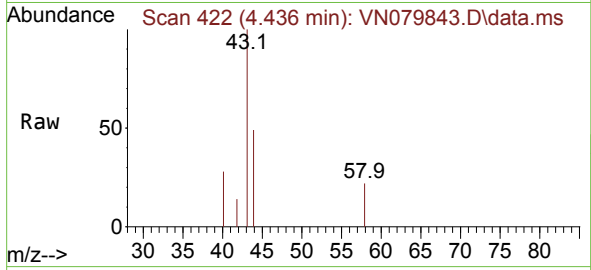




#16
 Acetone
 Concen: 3.105 ug/l
 RT: 4.436 min Scan# 41
 Delta R.T. 0.006 min
 Lab File: VN079843.D
 Acq: 03 Nov 2023 12:53

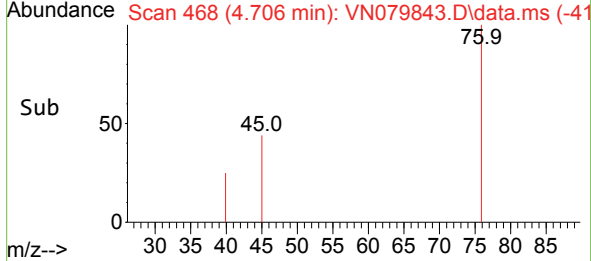
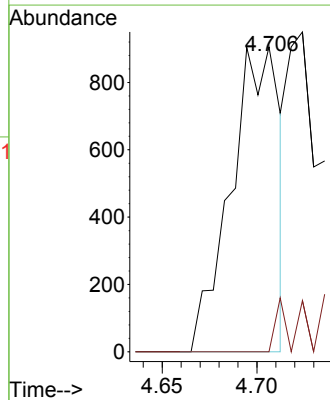
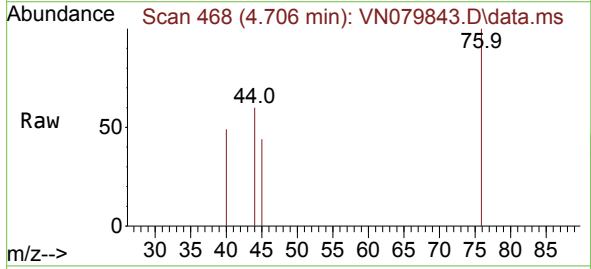
Instrument : MSVOA_N
 ClientSampleId : BP-VPB-188-GW-260-262

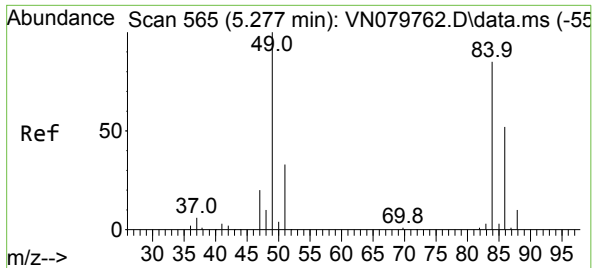
Tgt Ion: 43 Resp: 4107
 Ion Ratio Lower Upper
 43 100
 58 22.3 28.0 42.0#



#17
 Carbon Disulfide
 Concen: 0.211 ug/l
 RT: 4.706 min Scan# 468
 Delta R.T. -0.006 min
 Lab File: VN079843.D
 Acq: 03 Nov 2023 12:53

Tgt Ion: 76 Resp: 1616
 Ion Ratio Lower Upper
 76 100
 78 0.0 7.4 11.0#

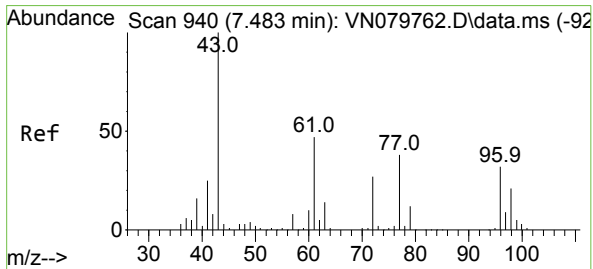
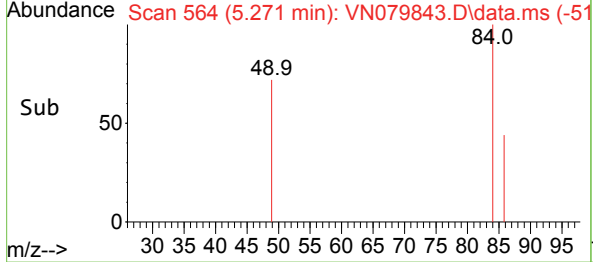
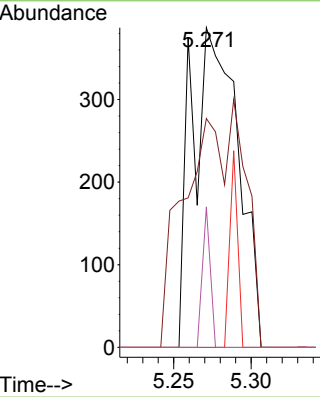
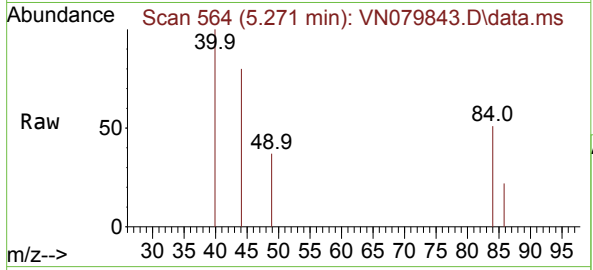




#20
 Methylene Chloride
 Concen: 0.240 ug/l
 RT: 5.271 min Scan# 50
 Delta R.T. 0.000 min
 Lab File: VN079843.D
 Acq: 03 Nov 2023 12:53

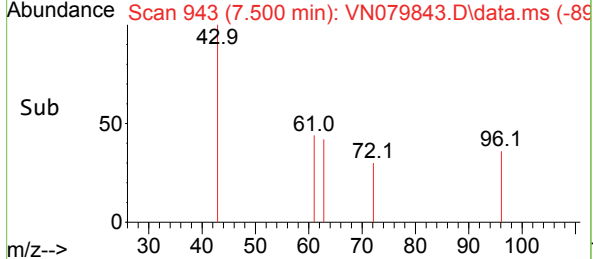
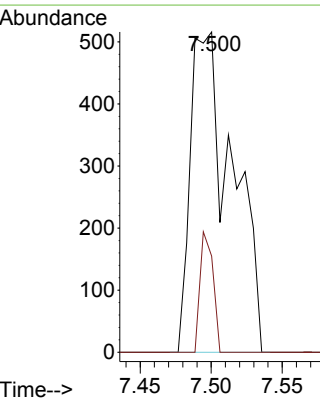
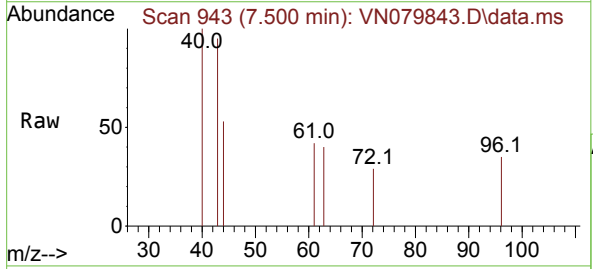
Instrument : MSVOA_N
 ClientSampleId : BP-VPB-188-GW-260-262

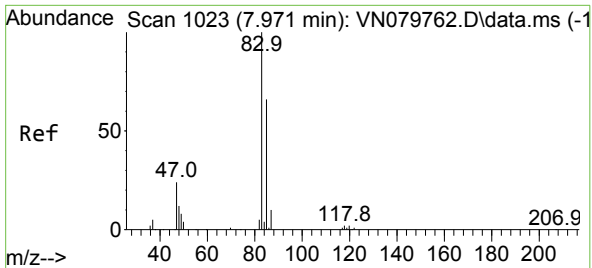
Tgt Ion	Resp	Lower	Upper
84	100		
49	71.6	79.7	119.5#
51	0.0	25.2	37.8#
86	43.9	53.3	79.9#



#25
 2-Butanone
 Concen: 0.548 ug/l
 RT: 7.500 min Scan# 943
 Delta R.T. 0.012 min
 Lab File: VN079843.D
 Acq: 03 Nov 2023 12:53

Tgt Ion	Resp	Lower	Upper
43	100		
72	30.0	30.2	45.2#

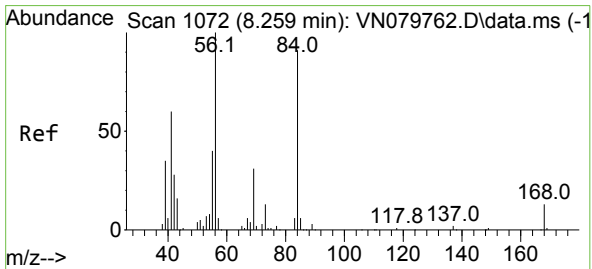
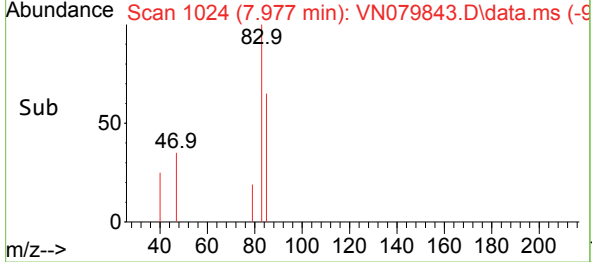
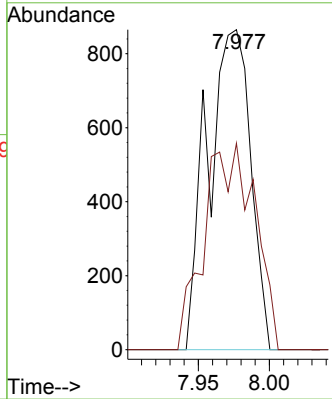
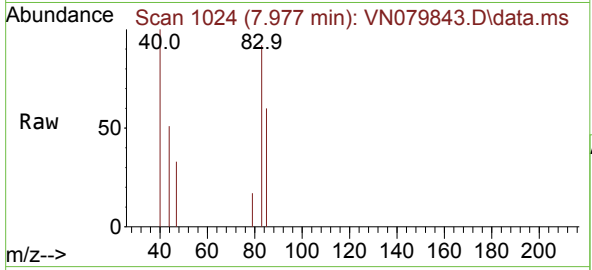




#30
 Chloroform
 Concen: 0.293 ug/l
 RT: 7.977 min Scan# 1067
 Delta R.T. 0.006 min
 Lab File: VN079843.D
 Acq: 03 Nov 2023 12:53

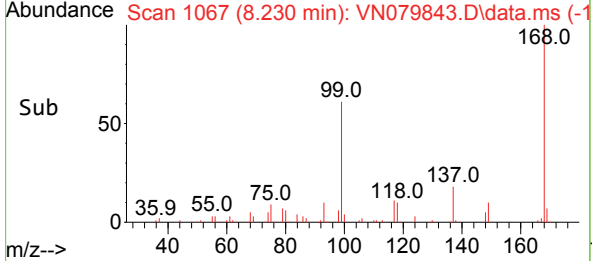
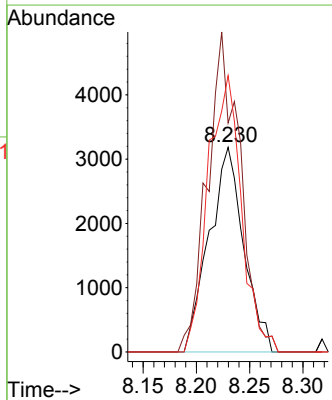
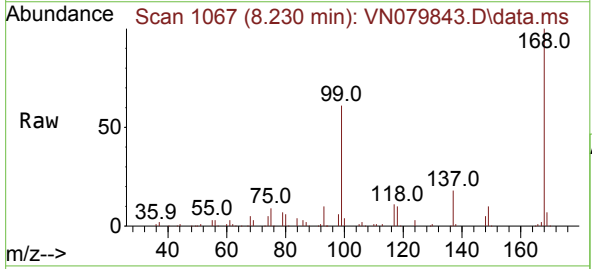
Instrument : MSVOA_N
 ClientSampleId : BP-VPB-188-GW-260-262

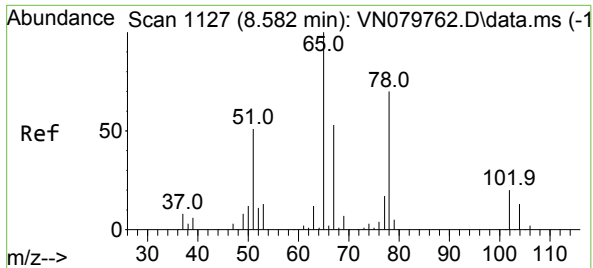
Tgt Ion: 83 Resp: 1826
 Ion Ratio Lower Upper
 83 100
 85 64.5 55.4 83.0



#31
 Cyclohexane
 Concen: 1.446 ug/l
 RT: 8.230 min Scan# 1067
 Delta R.T. -0.029 min
 Lab File: VN079843.D
 Acq: 03 Nov 2023 12:53

Tgt Ion: 56 Resp: 7196
 Ion Ratio Lower Upper
 56 100
 69 111.9 26.8 40.2#
 84 135.0 81.8 122.6#

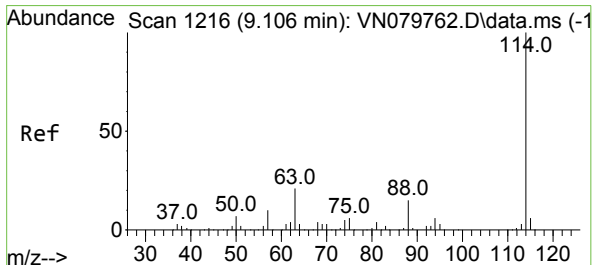
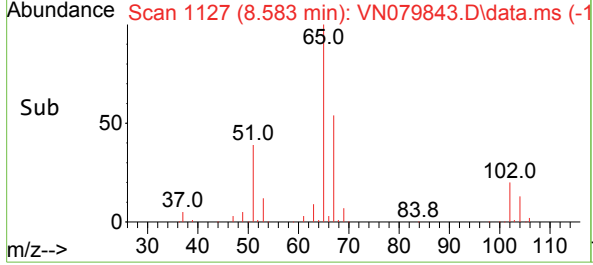
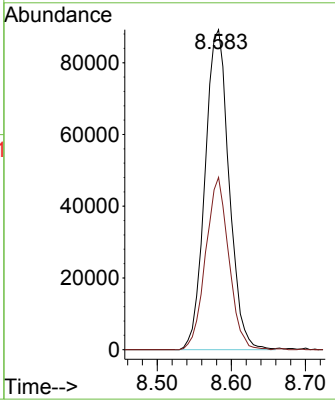
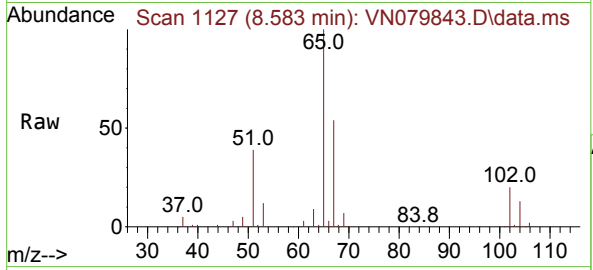




#33
 1,2-Dichloroethane-d4
 Concen: 53.378 ug/l
 RT: 8.583 min Scan# 1127
 Delta R.T. 0.000 min
 Lab File: VN079843.D
 Acq: 03 Nov 2023 12:53

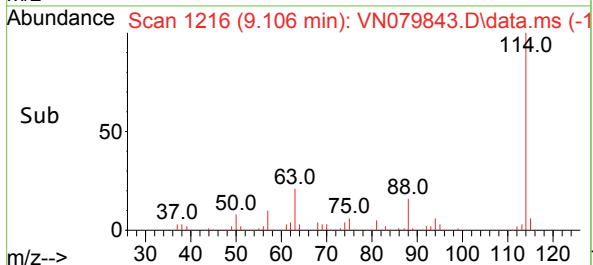
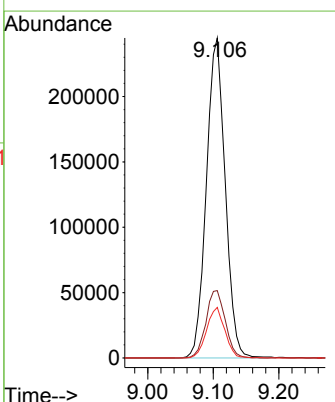
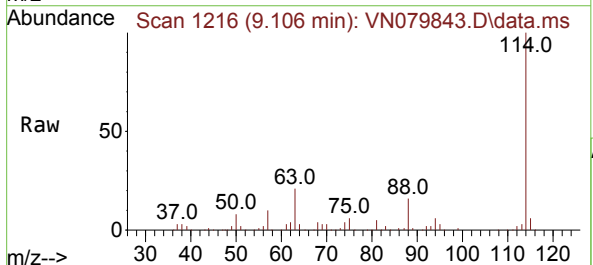
Instrument : MSVOA_N
 ClientSampleId : BP-VPB-188-GW-260-262

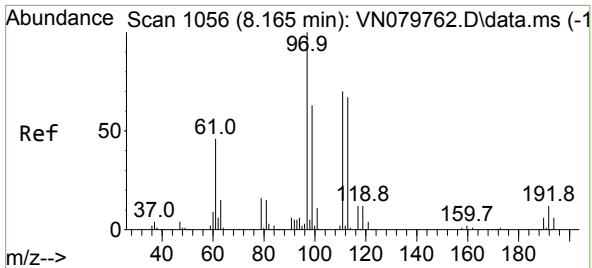
Tgt Ion: 65 Resp: 200993
 Ion Ratio Lower Upper
 65 100
 67 51.9 0.0 106.6



#34
 1,4-Difluorobenzene
 Concen: 50.000 ug/l
 RT: 9.106 min Scan# 1216
 Delta R.T. 0.000 min
 Lab File: VN079843.D
 Acq: 03 Nov 2023 12:53

Tgt Ion: 114 Resp: 487962
 Ion Ratio Lower Upper
 114 100
 63 21.1 0.0 36.4
 88 15.8 0.0 30.6



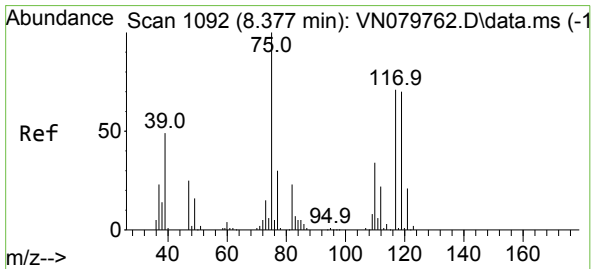
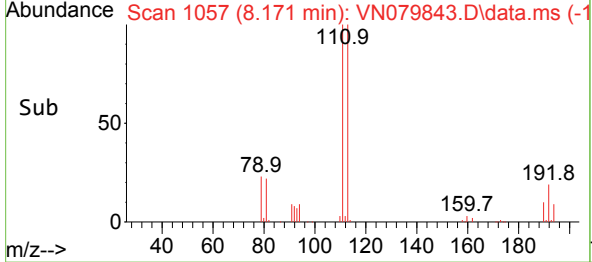
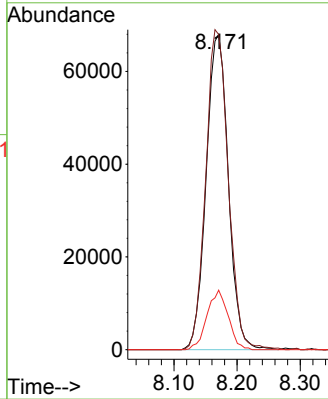
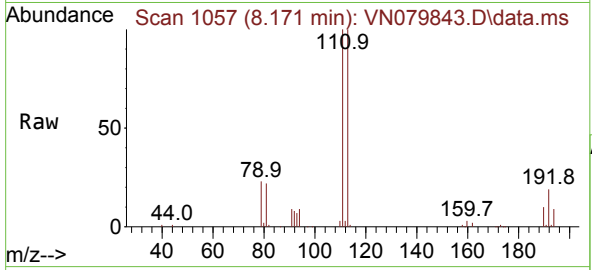


#35
 Dibromofluoromethane
 Concen: 48.016 ug/l
 RT: 8.171 min Scan# 1065
 Delta R.T. 0.000 min
 Lab File: VN079843.D
 Acq: 03 Nov 2023 12:53

Instrument : MSVOA_N
 ClientSampleId : BP-VPB-188-GW-260-262

Tgt Ion:113 Resp: 165827

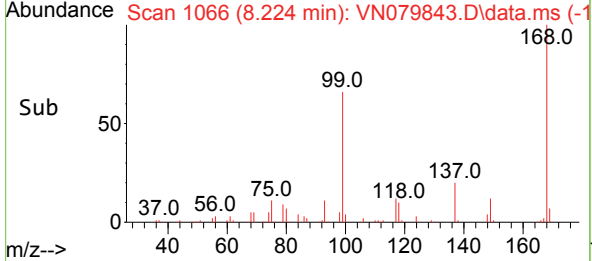
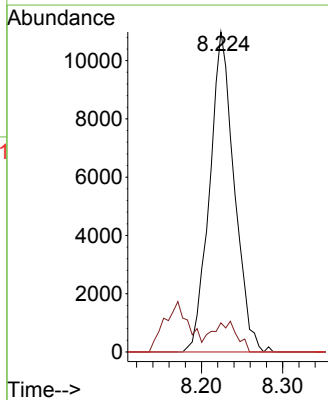
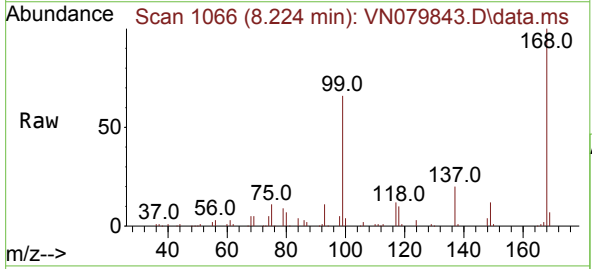
Ion	Ratio	Lower	Upper
113	100		
111	103.2	82.6	123.8
192	18.0	12.7	19.1

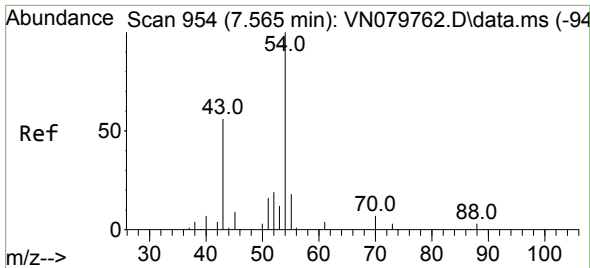


#36
 1,1-Dichloropropene
 Concen: 4.701 ug/l
 RT: 8.224 min Scan# 1066
 Delta R.T. -0.153 min
 Lab File: VN079843.D
 Acq: 03 Nov 2023 12:53

Tgt Ion: 75 Resp: 23181

Ion	Ratio	Lower	Upper
75	100		
110	9.6	19.1	57.3#
77	0.0	25.0	37.4#

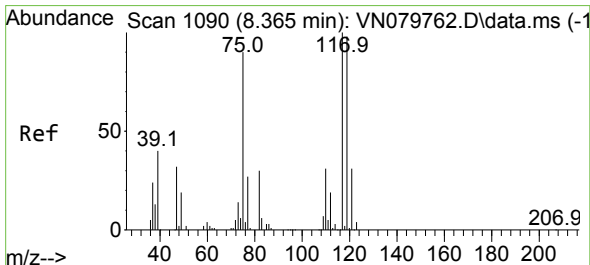
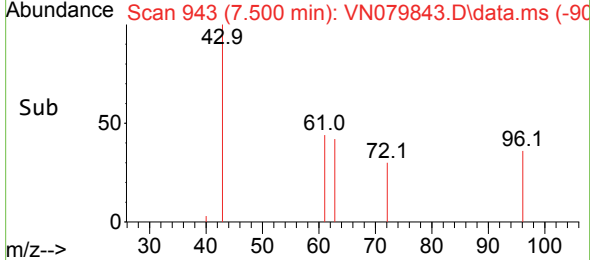
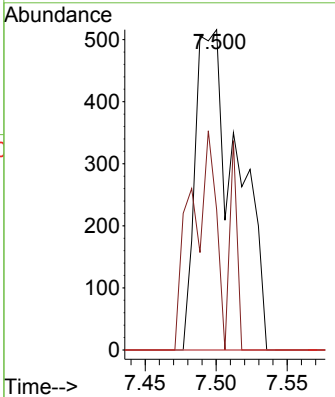
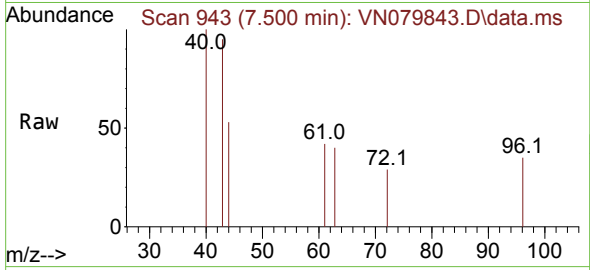




#37
 Ethyl Acetate
 Concen: 0.235 ug/l
 RT: 7.500 min Scan# 94
 Delta R.T. -0.064 min
 Lab File: VN079843.D
 Acq: 03 Nov 2023 12:53

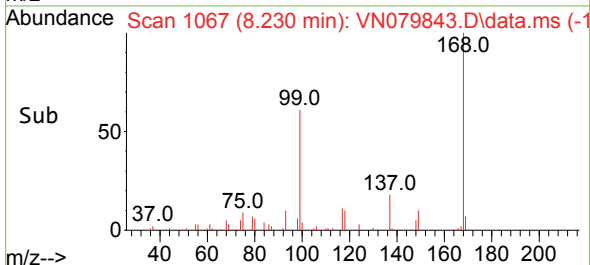
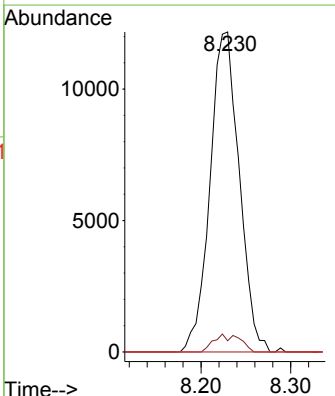
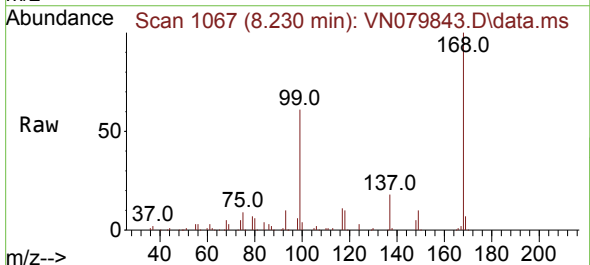
Instrument : MSVOA_N
 ClientSampleId : BP-VPB-188-GW-260-262

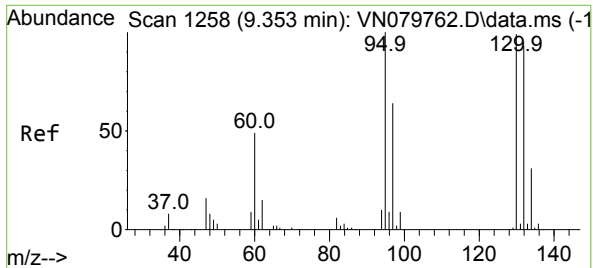
Tgt Ion	Resp	Lower	Upper
43	1062		
61	40.4	13.2	19.8#
70	0.0	11.3	16.9#



#38
 Carbon Tetrachloride
 Concen: 5.541 ug/l
 RT: 8.230 min Scan# 1067
 Delta R.T. -0.129 min
 Lab File: VN079843.D
 Acq: 03 Nov 2023 12:53

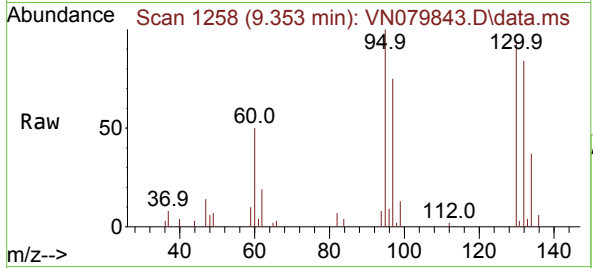
Tgt Ion	Resp	Lower	Upper
117	27537		
119	3.5	77.3	115.9#
121	0.0	23.3	34.9#



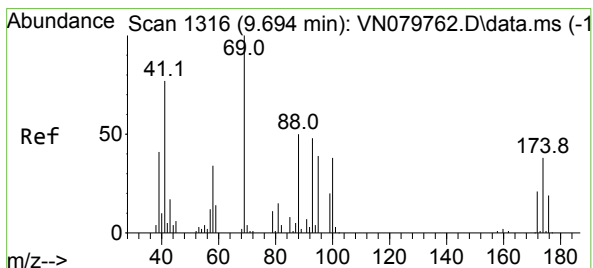
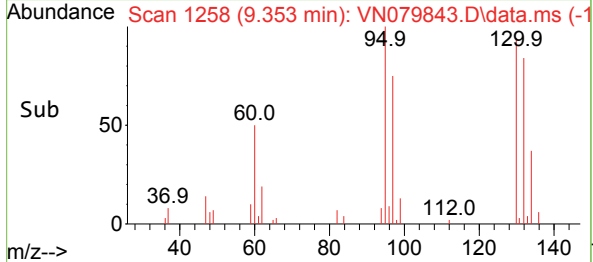
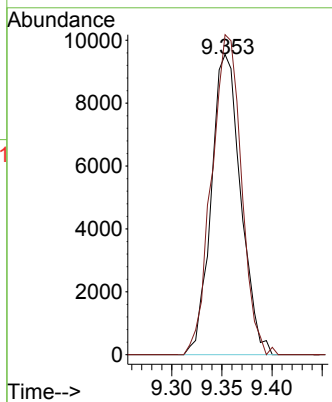


#44
 Trichloroethene
 Concen: 5.340 ug/l
 RT: 9.353 min Scan# 111
 Delta R.T. 0.000 min
 Lab File: VN079843.D
 Acq: 03 Nov 2023 12:53

Instrument : MSVOA_N
 ClientSampleId : BP-VPB-188-GW-260-262

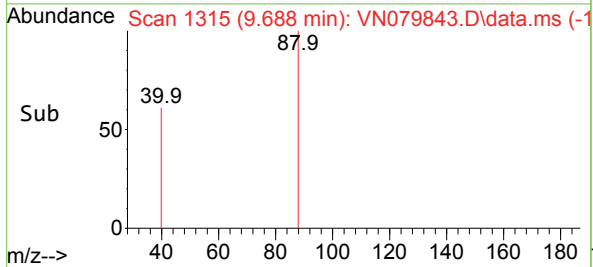
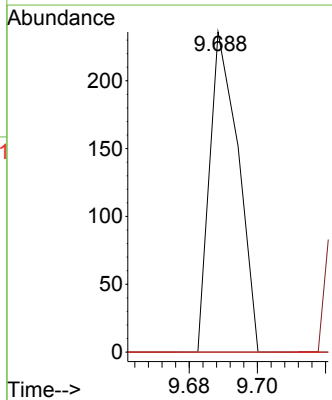
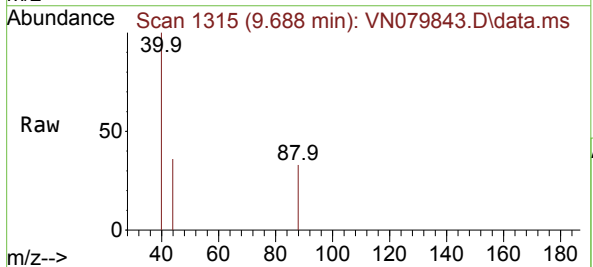


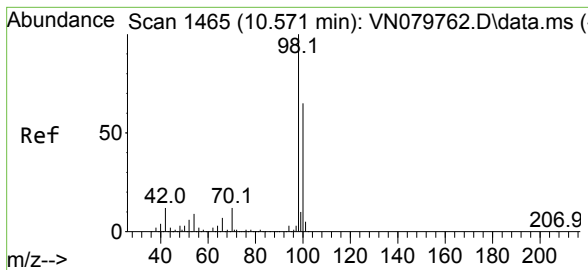
Tgt Ion:130 Resp: 19570
 Ion Ratio Lower Upper
 130 100
 95 106.6 0.0 204.6



#49
 1,4-Dioxane
 Concen: 2.232 ug/l
 RT: 9.688 min Scan# 1315
 Delta R.T. -0.006 min
 Lab File: VN079843.D
 Acq: 03 Nov 2023 12:53

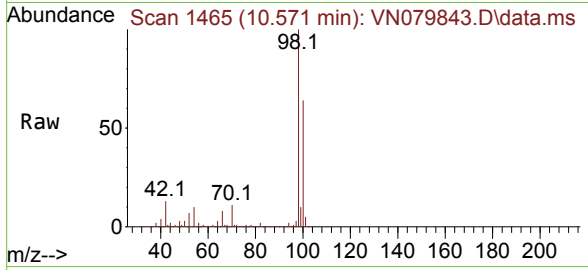
Tgt Ion: 88 Resp: 137
 Ion Ratio Lower Upper
 88 100
 43 0.0 17.0 25.6#
 58 0.0 47.0 70.4#



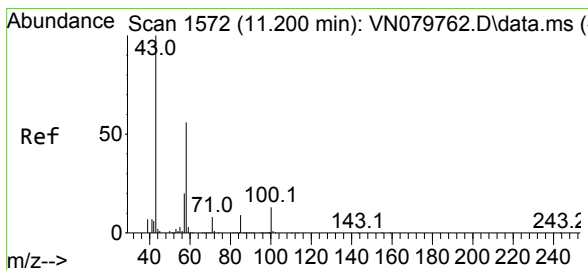
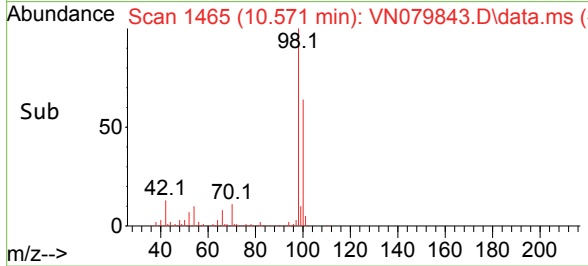
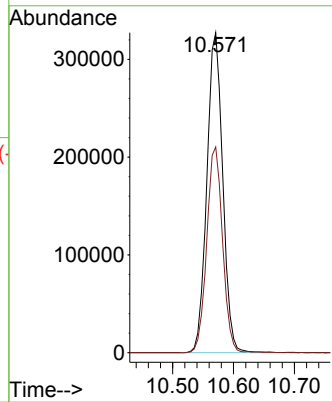


#50
 Toluene-d8
 Concen: 46.595 ug/l
 RT: 10.571 min Scan# 1465
 Delta R.T. 0.000 min
 Lab File: VN079843.D
 Acq: 03 Nov 2023 12:53

Instrument :
 MSVOA_N
ClientSampleId :
 BP-VPB-188-GW-260-262

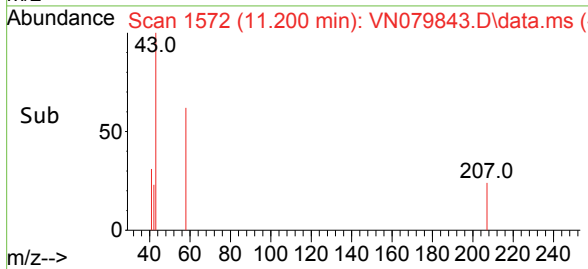
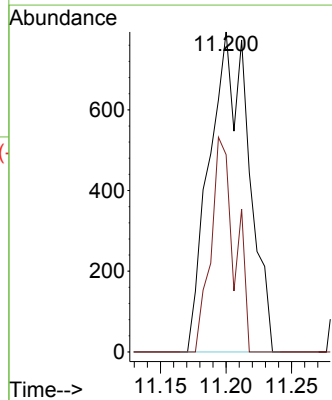
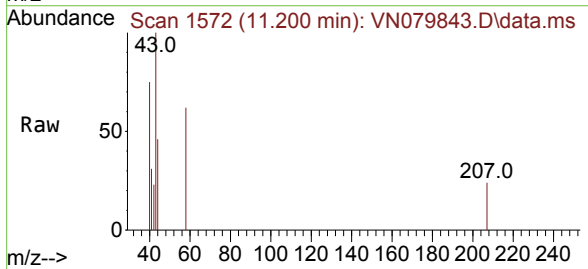


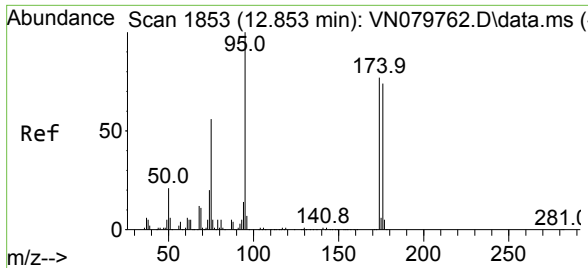
Tgt Ion: 98 Resp: 592409
 Ion Ratio Lower Upper
 98 100
 100 64.2 52.0 78.0



#59
 2-Hexanone
 Concen: 0.484 ug/l
 RT: 11.200 min Scan# 1572
 Delta R.T. 0.000 min
 Lab File: VN079843.D
 Acq: 03 Nov 2023 12:53

Tgt Ion: 43 Resp: 1654
 Ion Ratio Lower Upper
 43 100
 58 40.5 31.7 95.1



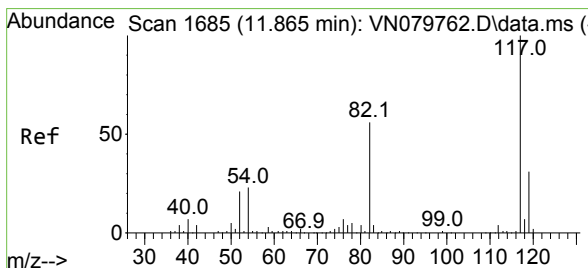
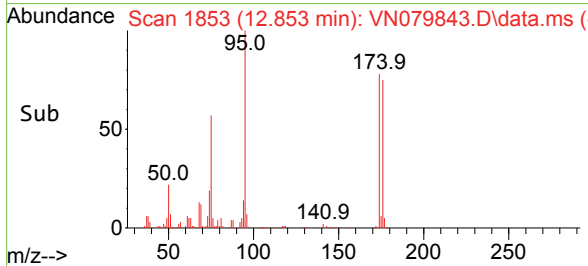
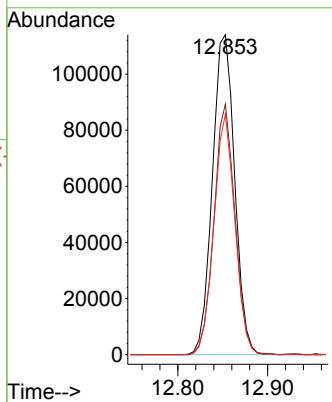
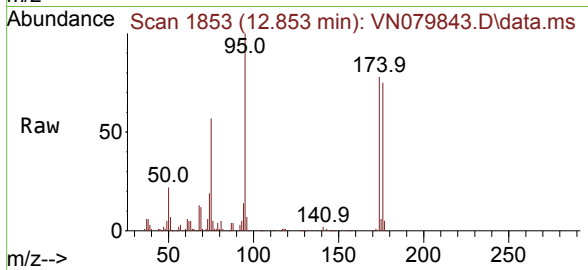


#62
 4-Bromofluorobenzene
 Concen: 46.656 ug/l
 RT: 12.853 min Scan# 1853
 Delta R.T. 0.000 min
 Lab File: VN079843.D
 Acq: 03 Nov 2023 12:53

Instrument : MSVOA_N
 ClientSampleId : BP-VPB-188-GW-260-262

Tgt Ion: 95 Resp: 196728

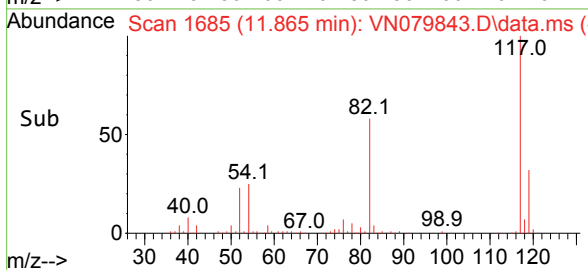
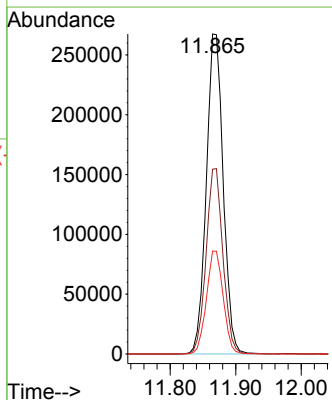
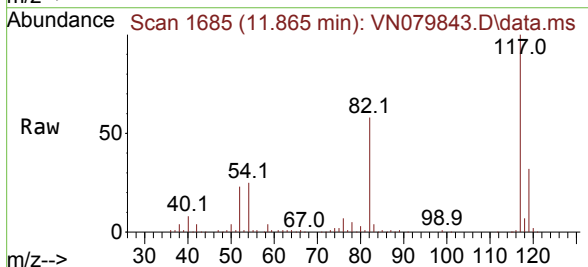
Ion	Ratio	Lower	Upper
95	100		
174	73.9	0.0	143.8
176	70.8	0.0	135.8

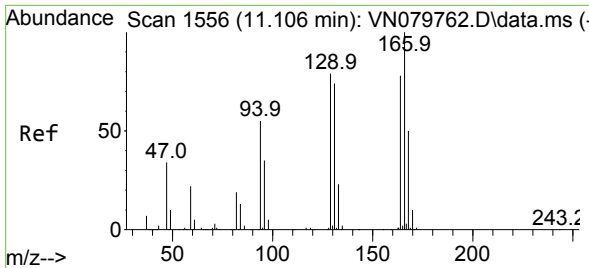


#63
 Chlorobenzene-d5
 Concen: 50.000 ug/l
 RT: 11.865 min Scan# 1685
 Delta R.T. -0.006 min
 Lab File: VN079843.D
 Acq: 03 Nov 2023 12:53

Tgt Ion: 117 Resp: 479164

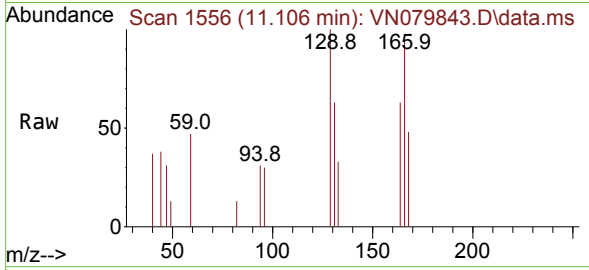
Ion	Ratio	Lower	Upper
117	100		
82	57.8	44.0	66.0
119	32.1	25.6	38.4



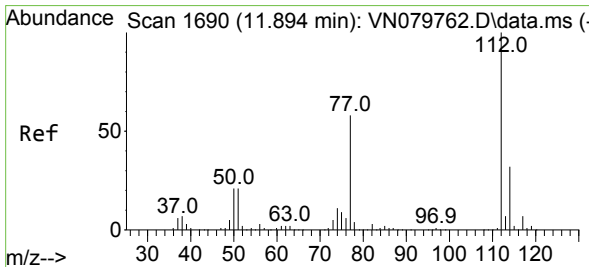
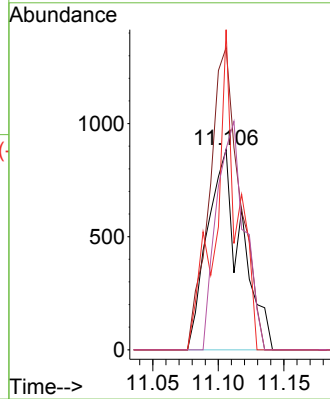
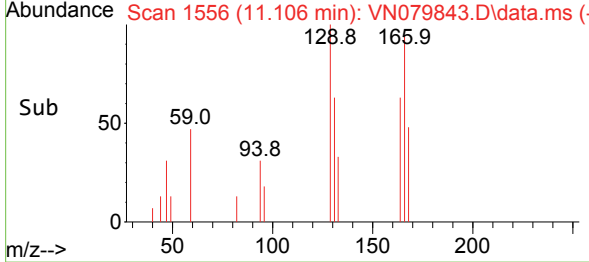


#64
 Tetrachloroethene
 Concen: 0.514 ug/l
 RT: 11.106 min Scan# 1556
 Delta R.T. 0.000 min
 Lab File: VN079843.D
 Acq: 03 Nov 2023 12:53

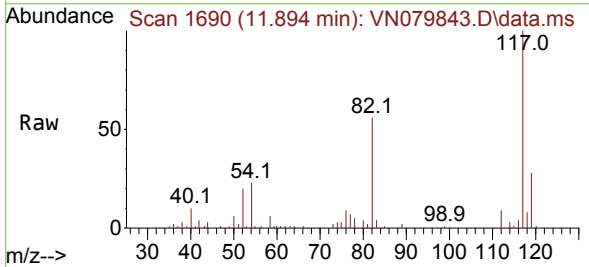
Instrument : MSVOA_N
 ClientSampleId : BP-VPB-188-GW-260-262



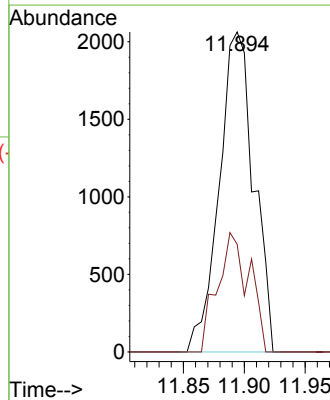
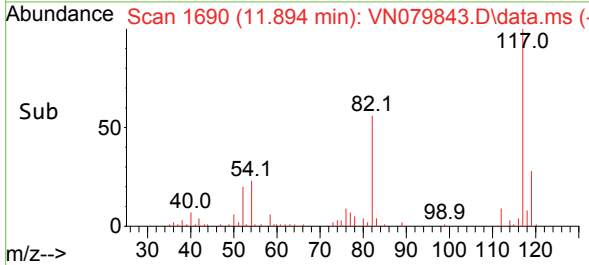
Tgt Ion:164 Resp: 1595
 Ion Ratio Lower Upper
 164 100
 166 151.0 101.4 152.0
 129 159.9 82.4 123.6#
 131 100.5 78.2 117.4

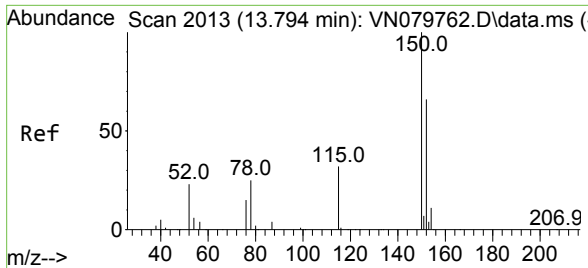


#65
 Chlorobenzene
 Concen: 0.392 ug/l
 RT: 11.894 min Scan# 1690
 Delta R.T. 0.000 min
 Lab File: VN079843.D
 Acq: 03 Nov 2023 12:53



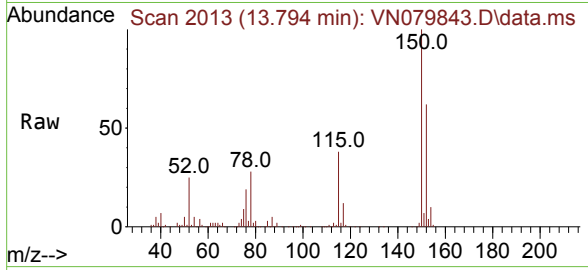
Tgt Ion:112 Resp: 4071
 Ion Ratio Lower Upper
 112 100
 114 33.6 25.0 37.4



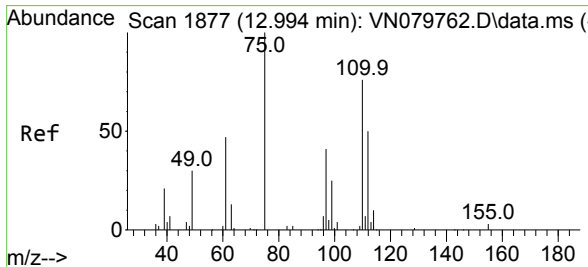
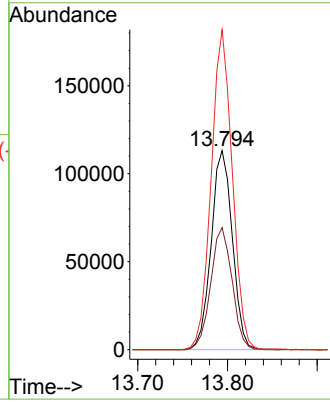
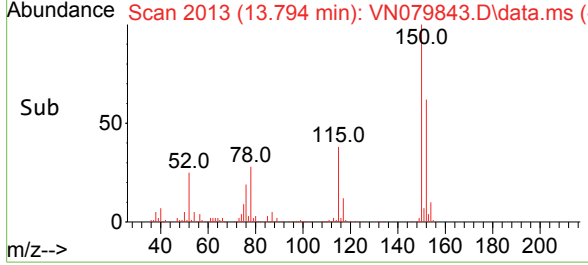


#72
 1,4-Dichlorobenzene-d4
 Concen: 50.000 ug/l
 RT: 13.794 min Scan# 20
 Delta R.T. 0.000 min
 Lab File: VN079843.D
 Acq: 03 Nov 2023 12:53

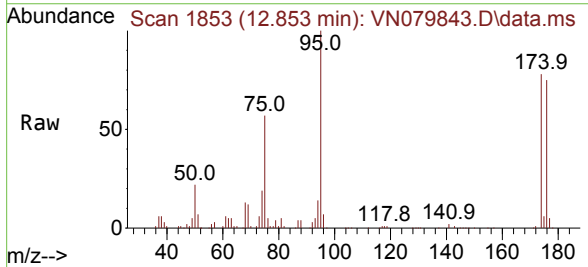
Instrument : MSVOA_N
 ClientSampleId : BP-VPB-188-GW-260-262



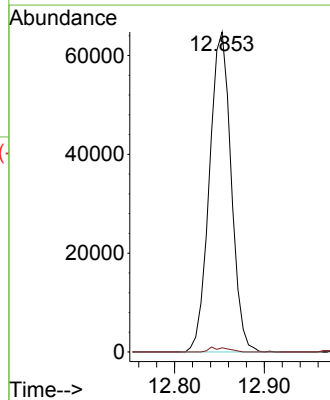
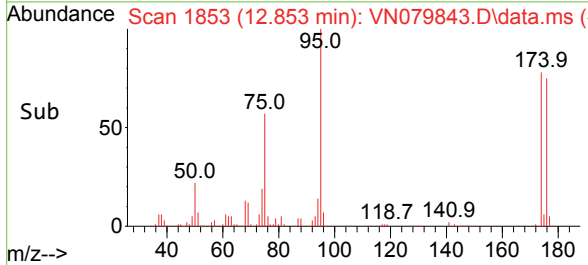
Tgt Ion:152 Resp: 185522
 Ion Ratio Lower Upper
 152 100
 115 61.7 32.3 96.8
 150 159.7 0.0 355.8

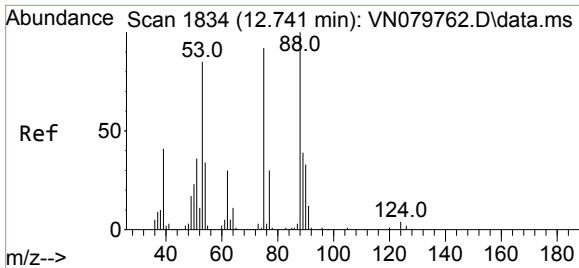


#76
 1,2,3-Trichloropropane
 Concen: 25.018 ug/l
 RT: 12.853 min Scan# 1853
 Delta R.T. -0.141 min
 Lab File: VN079843.D
 Acq: 03 Nov 2023 12:53



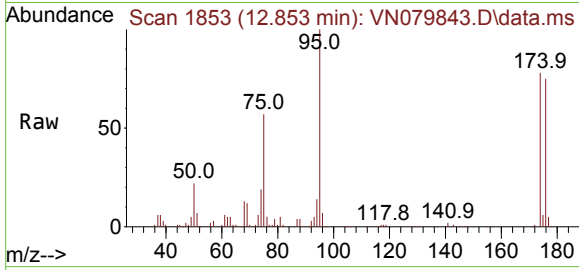
Tgt Ion: 75 Resp: 108966
 Ion Ratio Lower Upper
 75 100
 77 1.2 84.5 253.5#





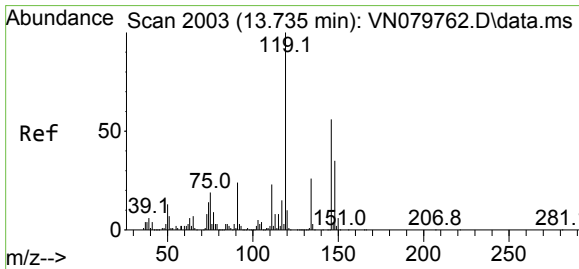
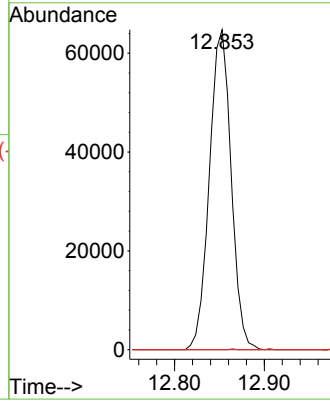
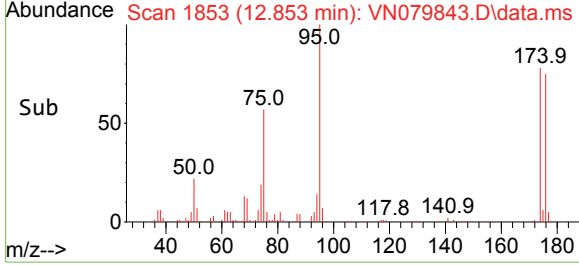
#81
 trans-1,4-Dichloro-2-butene
 Concen: 68.068 ug/l
 RT: 12.853 min Scan# 1853
 Delta R.T. 0.118 min
 Lab File: VN079843.D
 Acq: 03 Nov 2023 12:53

Instrument : MSVOA_N
 ClientSampleId : BP-VPB-188-GW-260-262

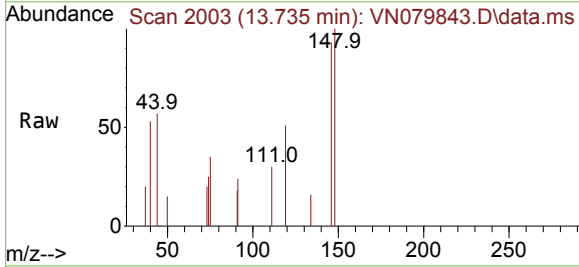


Tgt Ion: 75 Resp: 108966

Ion	Ratio	Lower	Upper
75	100		
53	0.0	67.4	101.2#
89	0.0	38.8	58.2#

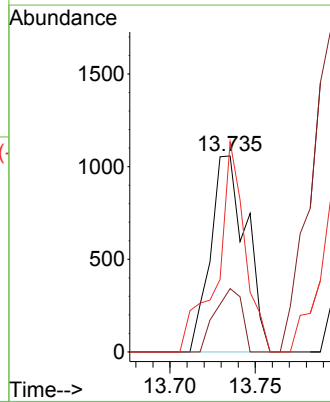
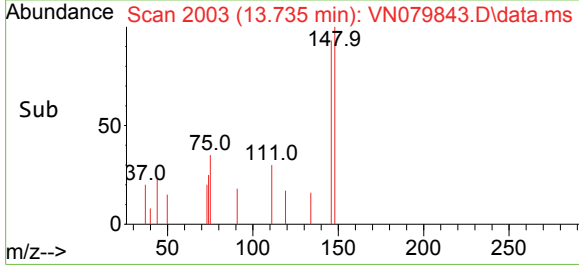


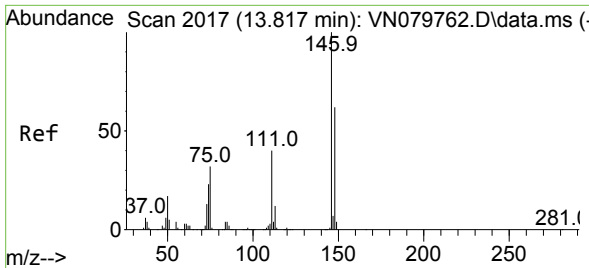
#87
 1,3-Dichlorobenzene
 Concen: 0.241 ug/l
 RT: 13.735 min Scan# 2003
 Delta R.T. 0.000 min
 Lab File: VN079843.D
 Acq: 03 Nov 2023 12:53



Tgt Ion: 146 Resp: 1547

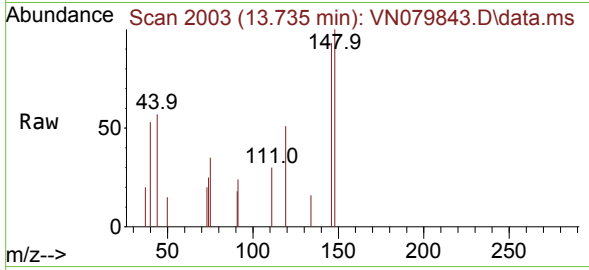
Ion	Ratio	Lower	Upper
146	100		
111	24.4	22.1	66.3
148	83.1	32.0	96.0



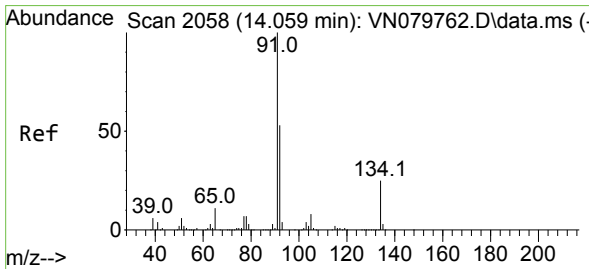
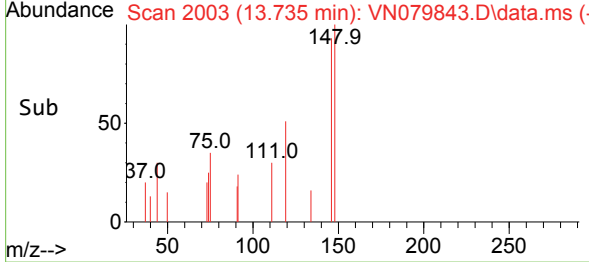
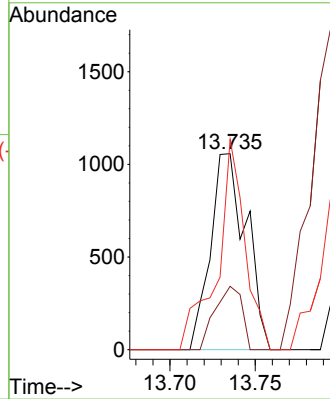


#88
 1,4-Dichlorobenzene
 Concen: 0.238 ug/l
 RT: 13.735 min Scan# 2017
 Delta R.T. -0.082 min
 Lab File: VN079843.D
 Acq: 03 Nov 2023 12:53

Instrument : MSVOA_N
 ClientSampleId : BP-VPB-188-GW-260-262

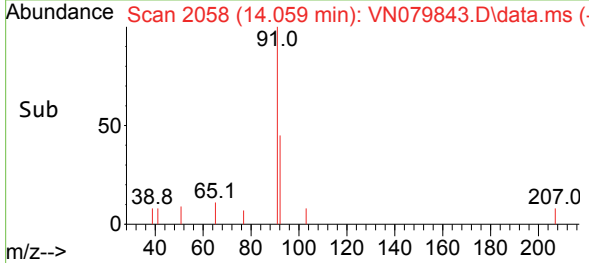
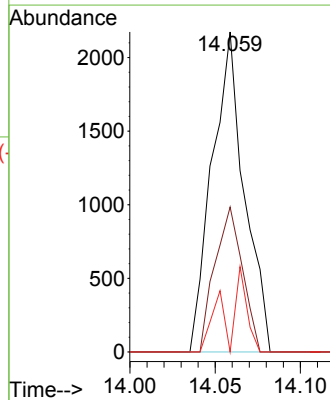
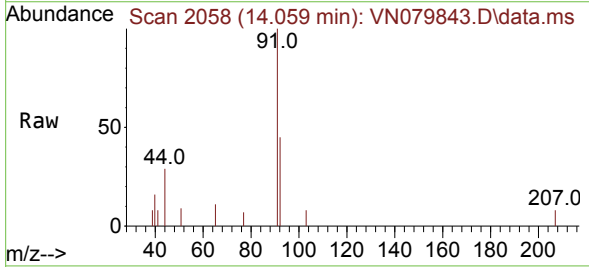


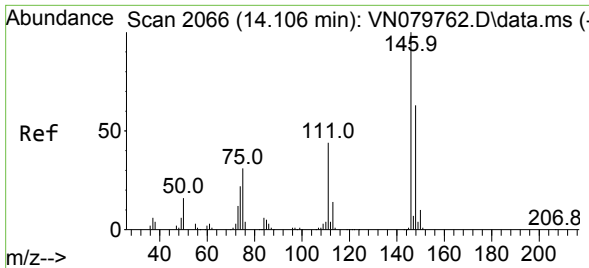
Tgt Ion:146 Resp: 1547
 Ion Ratio Lower Upper
 146 100
 111 24.4 20.6 61.8
 148 83.1 31.6 94.8



#89
 n-Butylbenzene
 Concen: 0.328 ug/l
 RT: 14.059 min Scan# 2058
 Delta R.T. 0.000 min
 Lab File: VN079843.D
 Acq: 03 Nov 2023 12:53

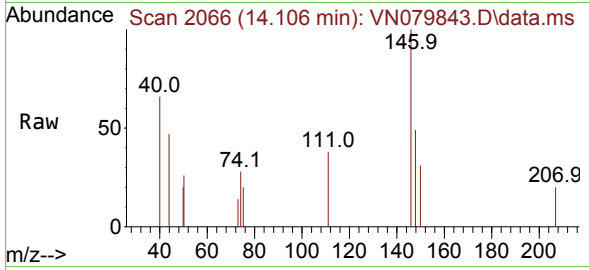
Tgt Ion: 91 Resp: 2865
 Ion Ratio Lower Upper
 91 100
 92 38.7 26.4 79.0
 134 9.2 12.6 37.6#





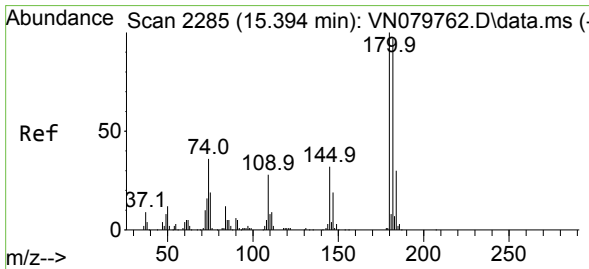
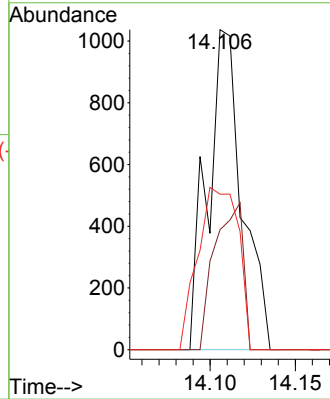
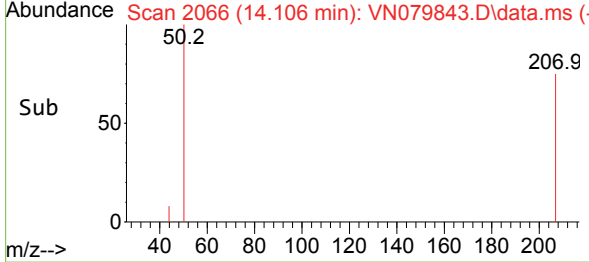
#91
 1,2-Dichlorobenzene
 Concen: 0.242 ug/l
 RT: 14.106 min Scan# 2066
 Delta R.T. 0.000 min
 Lab File: VN079843.D
 Acq: 03 Nov 2023 12:53

Instrument : MSVOA_N
 ClientSampleId : BP-VPB-188-GW-260-262

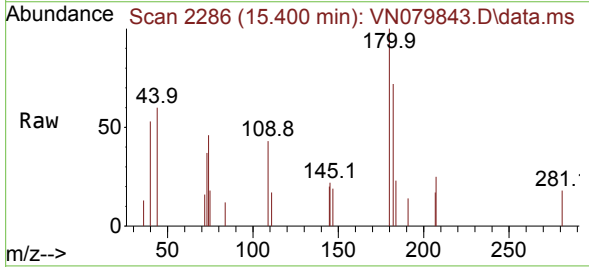


Tgt Ion:146 Resp: 1464

Ion	Ratio	Lower	Upper
146	100		
111	37.9	22.0	66.0
148	59.2	31.8	95.3

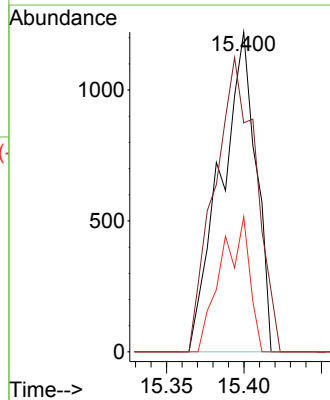
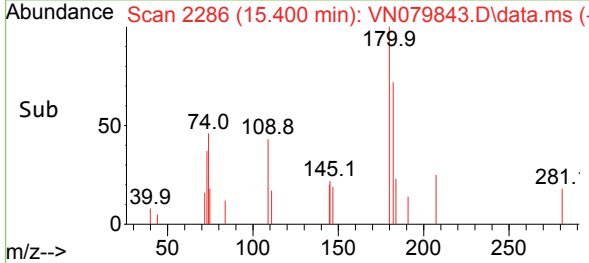


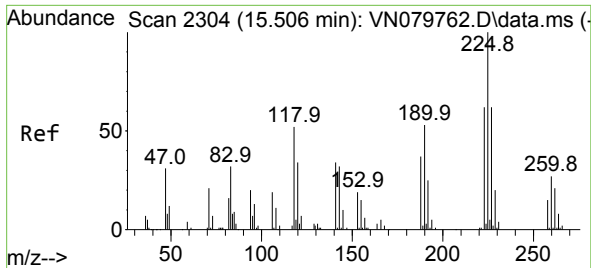
#93
 1,2,4-Trichlorobenzene
 Concen: 0.673 ug/l
 RT: 15.400 min Scan# 2286
 Delta R.T. 0.006 min
 Lab File: VN079843.D
 Acq: 03 Nov 2023 12:53



Tgt Ion:180 Resp: 1937

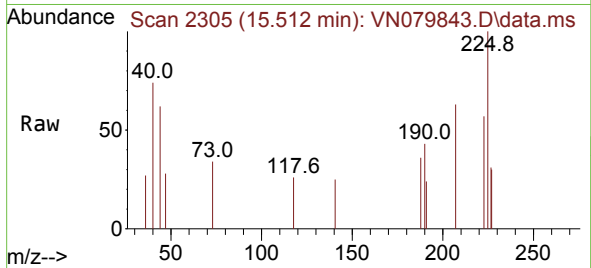
Ion	Ratio	Lower	Upper
180	100		
182	107.7	46.1	138.2
145	34.0	16.6	49.8



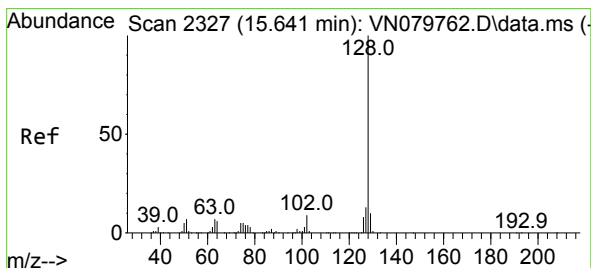
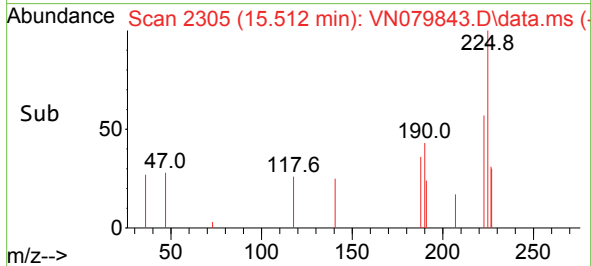
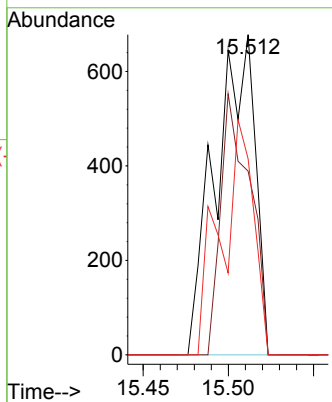


#94
 Hexachlorobutadiene
 Concen: 0.838 ug/l
 RT: 15.512 min Scan# 21
 Delta R.T. 0.006 min
 Lab File: VN079843.D
 Acq: 03 Nov 2023 12:53

Instrument : MSVOA_N
 ClientSampleId : BP-VPB-188-GW-260-262

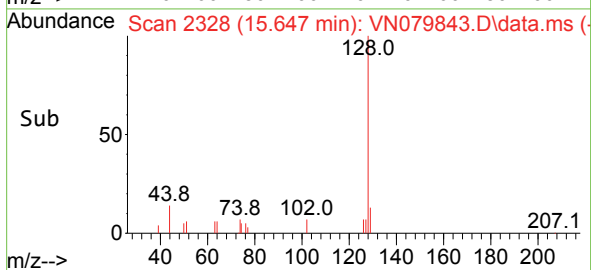
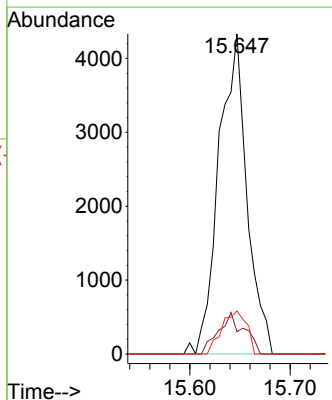
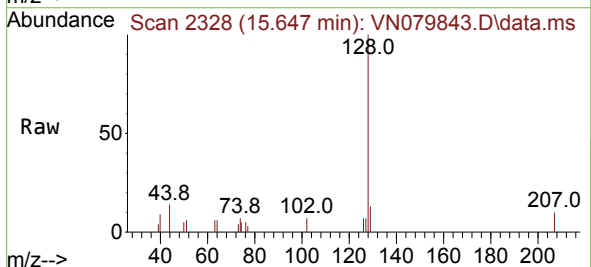


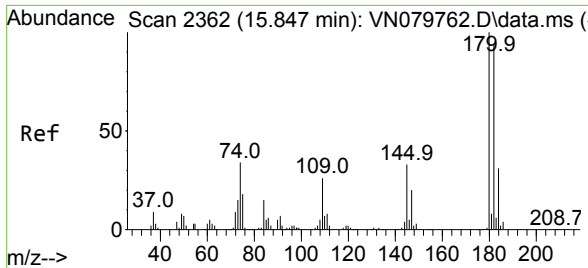
Tgt Ion:225 Resp: 1093
 Ion Ratio Lower Upper
 225 100
 223 60.6 31.3 93.8
 227 60.6 31.9 95.9



#95
 Naphthalene
 Concen: 0.861 ug/l
 RT: 15.647 min Scan# 2328
 Delta R.T. 0.006 min
 Lab File: VN079843.D
 Acq: 03 Nov 2023 12:53

Tgt Ion:128 Resp: 8405
 Ion Ratio Lower Upper
 128 100
 127 11.8 10.0 15.0
 129 11.9 8.7 13.1





#96
 1,2,3-Trichlorobenzene
 Concen: 0.794 ug/l
 RT: 15.847 min Scan# 21
 Delta R.T. 0.006 min
 Lab File: VN079843.D
 Acq: 03 Nov 2023 12:53

Instrument : MSVOA_N
 ClientSampleId : BP-VPB-188-GW-260-262

Tgt Ion	Resp	Ion Ratio	Lower	Upper
180	2240	100		
182		105.7	46.2	138.6
145		34.9	17.5	52.6

