

Data Path : Z:\voasrv\HPCHEM1\MSVOA\_N\Data\VN110323\  
 Data File : VN079847.D  
 Acq On : 03 Nov 2023 14:28  
 Operator : JC\MD  
 Sample : 05225-07RE  
 Misc : 5.0mL/MSVOA\_N/WATER  
 ALS Vial : 11 Sample Multiplier: 1

Instrument :  
 MSVOA\_N  
 ClientSampleId :

Quant Time: Nov 04 00:52:39 2023  
 Quant Method : Z:\voasrv\HPCHEM1\MSVOA\_N\methods\82N110123W.M  
 Quant Title : SW846 8260  
 QLast Update : Thu Nov 02 05:49:08 2023  
 Response via : Initial Calibration

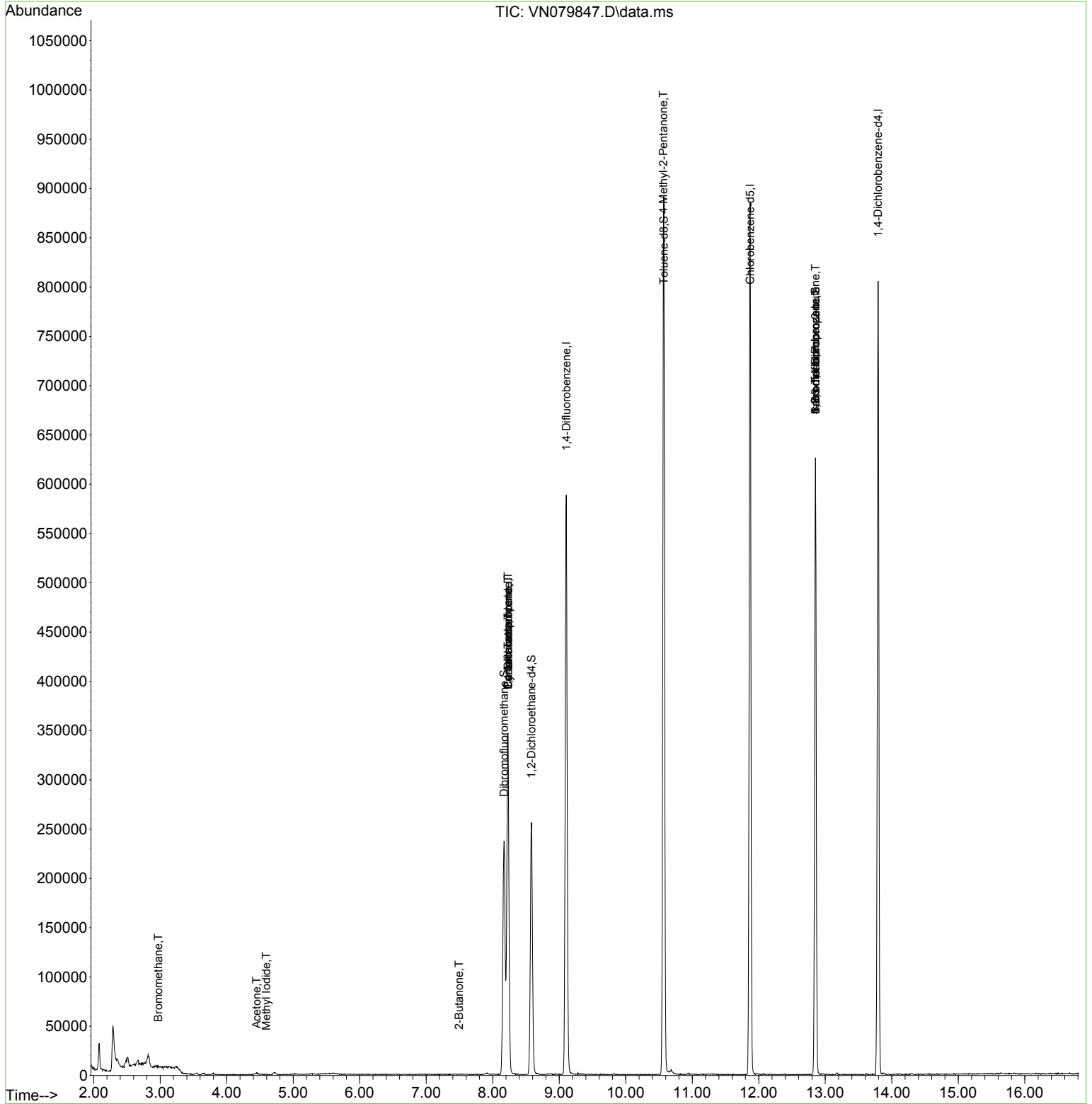
Compound	R.T.	QIon	Response	Conc	Units	Dev(Min)
-----						
Internal Standards						
1) Pentafluorobenzene	8.230	168	241090	50.000	ug/l	0.00
34) 1,4-Difluorobenzene	9.106	114	483792	50.000	ug/l	0.00
63) Chlorobenzene-d5	11.871	117	506348	50.000	ug/l	0.00
72) 1,4-Dichlorobenzene-d4	13.794	152	205591	50.000	ug/l	0.00
System Monitoring Compounds						
33) 1,2-Dichloroethane-d4	8.583	65	208359	56.726	ug/l	0.00
Spiked Amount	50.000	Range 74 - 125	Recovery	=	113.460%	
35) Dibromofluoromethane	8.171	113	173212	50.586	ug/l	0.00
Spiked Amount	50.000	Range 75 - 124	Recovery	=	101.180%	
50) Toluene-d8	10.571	98	595632	47.253	ug/l	0.00
Spiked Amount	50.000	Range 86 - 113	Recovery	=	94.500%	
62) 4-Bromofluorobenzene	12.853	95	207725	49.688	ug/l	0.00
Spiked Amount	50.000	Range 83 - 123	Recovery	=	99.380%	
Target Compounds						
					Qvalue	
3) Chloromethane	2.366	50	2003	Below Cal	#	76
5) Bromomethane	2.971	94	836	0.362	ug/l #	63
10) Methyl Iodide	4.595	142	678	0.217	ug/l #	38
16) Acetone	4.448	43	3372	2.614	ug/l	95
25) 2-Butanone	7.495	43	580	0.307	ug/l #	37
31) Cyclohexane	8.230	56	6205	1.278	ug/l #	16
36) 1,1-Dichloropropene	8.230	75	21332	4.363	ug/l #	48
38) Carbon Tetrachloride	8.230	117	26536	5.386	ug/l #	15
51) 4-Methyl-2-Pentanone	10.565	43	2839	0.641	ug/l #	1
71) Bromoform	12.853	173	2019	0.719	ug/l #	1
76) 1,2,3-Trichloropropane	12.853	75	114642	23.752	ug/l #	1
81) trans-1,4-Dichloro-2-b...	12.853	75	114642	64.623	ug/l #	15
-----						

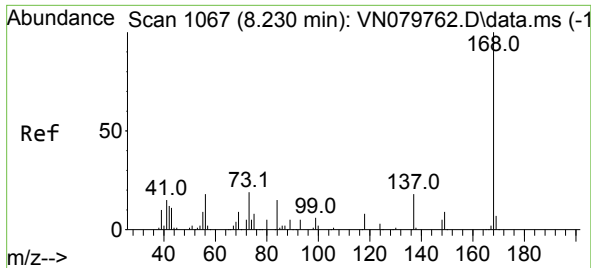
(#) = qualifier out of range (m) = manual integration (+) = signals summed

Data Path : Z:\voasrv\HPCHEM1\MSVOA\_N\Data\VN110323\  
 Data File : VN079847.D  
 Acq On : 03 Nov 2023 14:28  
 Operator : JC\MD  
 Sample : 05225-07RE  
 Misc : 5.0mL/MSVOA\_N/WATER  
 ALS Vial : 11 Sample Multiplier: 1

Instrument :  
 MSVOA\_N  
 ClientSampleId :

Quant Time: Nov 04 00:52:39 2023  
 Quant Method : Z:\voasrv\HPCHEM1\MSVOA\_N\methods\82N110123W.M  
 Quant Title : SW846 8260  
 QLast Update : Thu Nov 02 05:49:08 2023  
 Response via : Initial Calibration

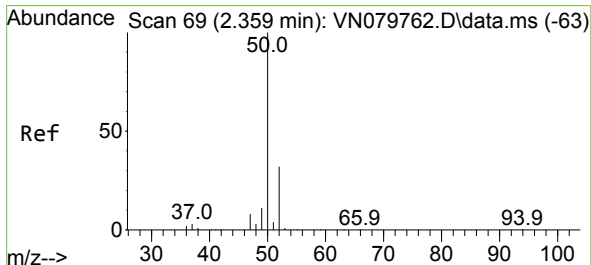
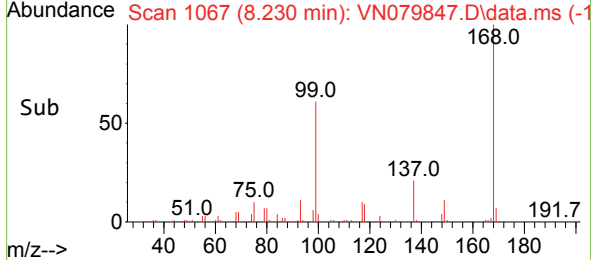
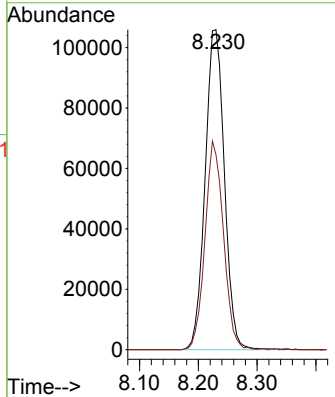
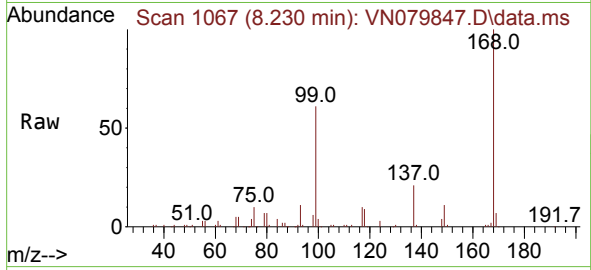




#1  
 Pentafluorobenzene  
 Concen: 50.000 ug/l  
 RT: 8.230 min Scan# 10  
 Delta R.T. 0.001 min  
 Lab File: VN079847.D  
 Acq: 03 Nov 2023 14:28

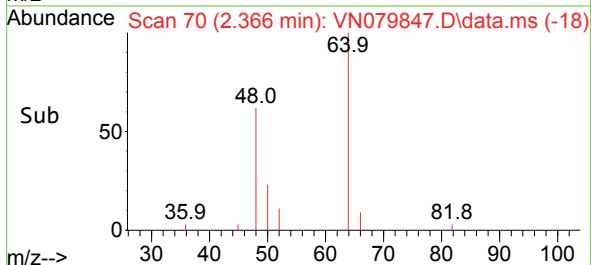
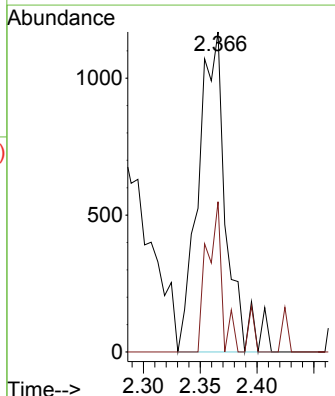
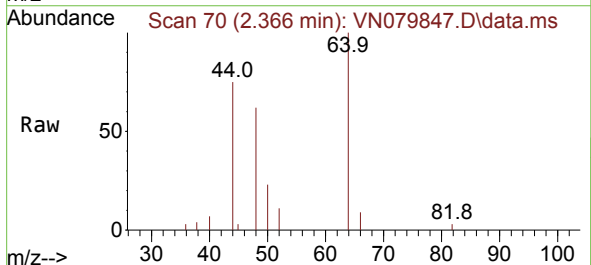
Instrument :  
 MSVOA\_N  
 ClientSampleId :

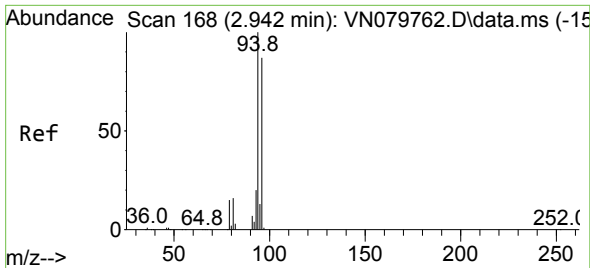
Tgt Ion:168 Resp: 241090  
 Ion Ratio Lower Upper  
 168 100  
 99 61.0 53.0 79.6



#3  
 Chloromethane  
 Concen: Below Cal  
 RT: 2.366 min Scan# 70  
 Delta R.T. 0.007 min  
 Lab File: VN079847.D  
 Acq: 03 Nov 2023 14:28

Tgt Ion: 50 Resp: 2003  
 Ion Ratio Lower Upper  
 50 100  
 52 47.0 26.5 39.7#

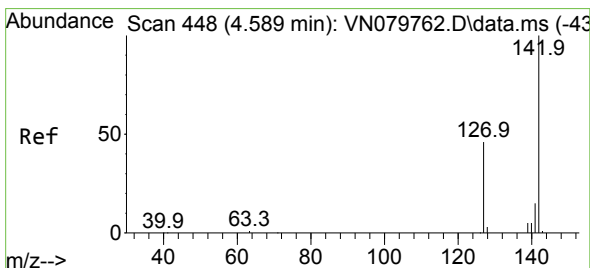
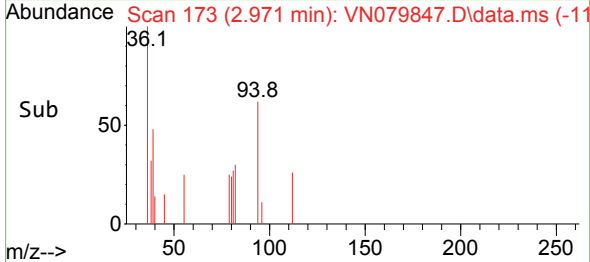
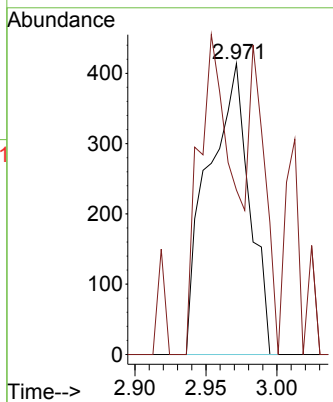
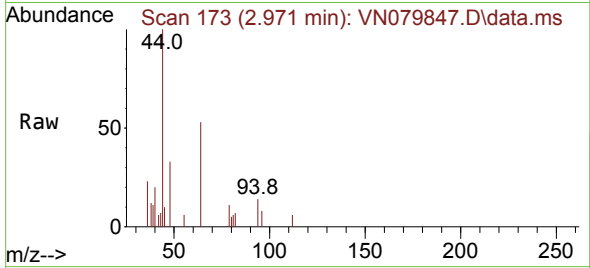




#5  
 Bromomethane  
 Concen: 0.362 ug/l  
 RT: 2.971 min Scan# 11  
 Delta R.T. 0.018 min  
 Lab File: VN079847.D  
 Acq: 03 Nov 2023 14:28

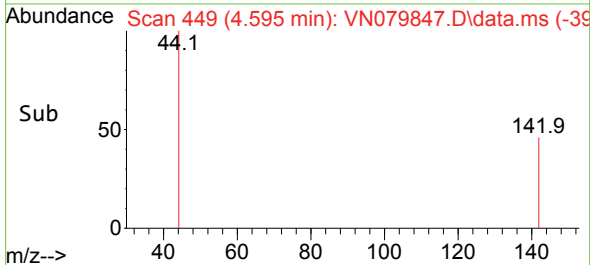
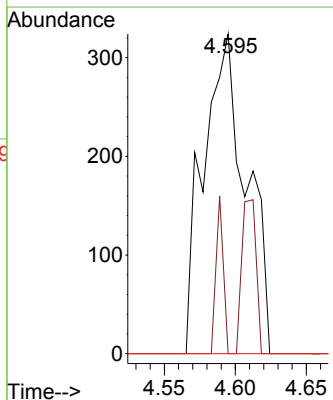
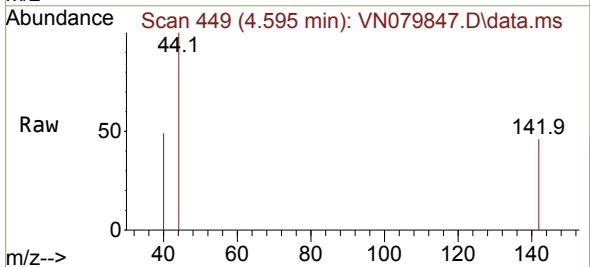
Instrument :  
 MSVOA\_N  
 ClientSampleId :

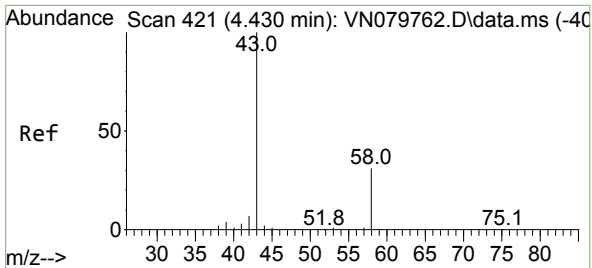
Tgt Ion: 94 Resp: 836  
 Ion Ratio Lower Upper  
 94 100  
 96 56.5 73.1 109.7#



#10  
 Methyl Iodide  
 Concen: 0.217 ug/l  
 RT: 4.595 min Scan# 449  
 Delta R.T. 0.000 min  
 Lab File: VN079847.D  
 Acq: 03 Nov 2023 14:28

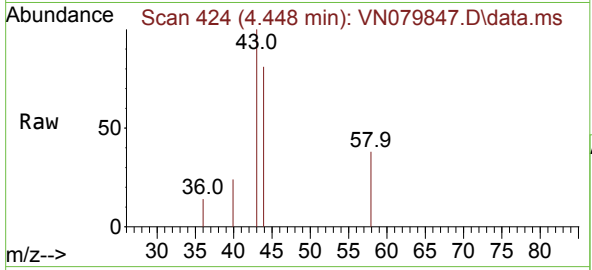
Tgt Ion:142 Resp: 678  
 Ion Ratio Lower Upper  
 142 100  
 127 0.0 37.6 56.4#  
 141 0.0 11.4 17.0#



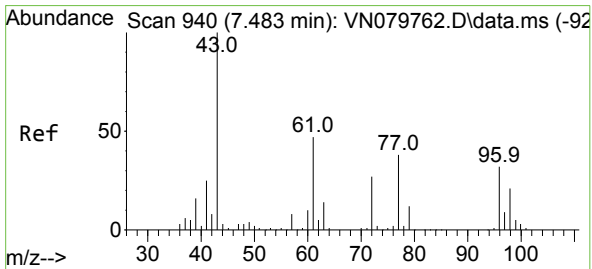
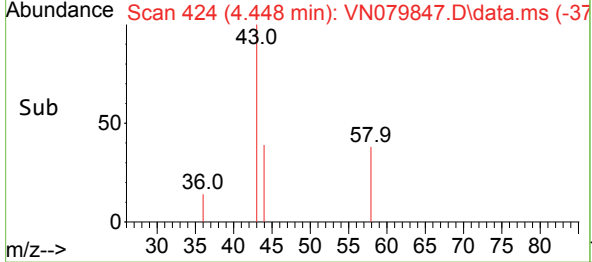
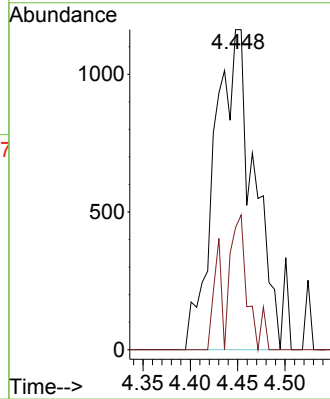


#16  
 Acetone  
 Concen: 2.614 ug/l  
 RT: 4.448 min Scan# 41  
 Delta R.T. 0.018 min  
 Lab File: VN079847.D  
 Acq: 03 Nov 2023 14:28

Instrument :  
 MSVOA\_N  
 ClientSampleId :

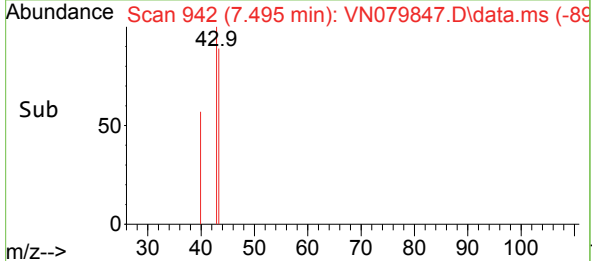
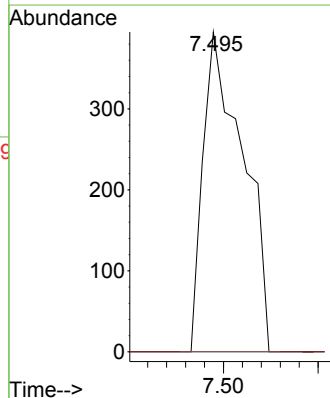
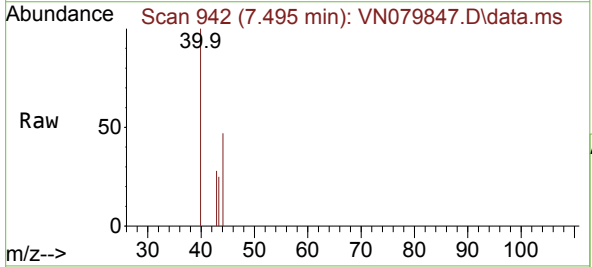


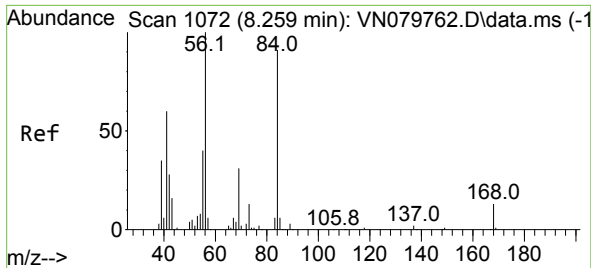
Tgt Ion: 43 Resp: 3372  
 Ion Ratio Lower Upper  
 43 100  
 58 38.1 28.0 42.0



#25  
 2-Butanone  
 Concen: 0.307 ug/l  
 RT: 7.495 min Scan# 942  
 Delta R.T. 0.006 min  
 Lab File: VN079847.D  
 Acq: 03 Nov 2023 14:28

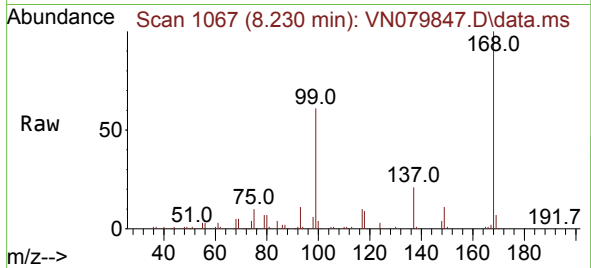
Tgt Ion: 43 Resp: 580  
 Ion Ratio Lower Upper  
 43 100  
 72 0.0 30.2 45.2#



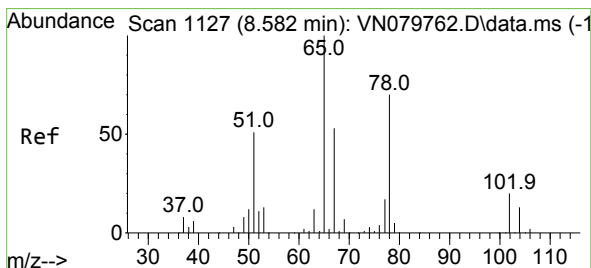
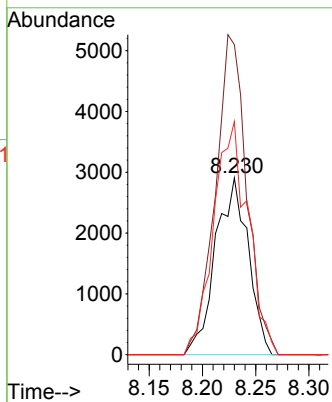
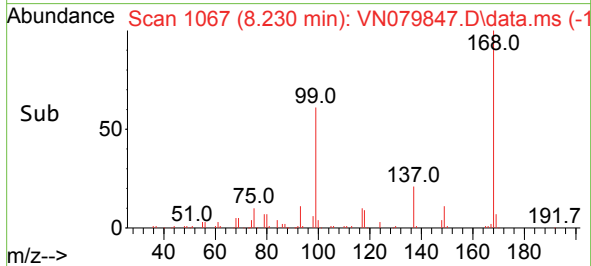


#31  
 Cyclohexane  
 Concen: 1.278 ug/l  
 RT: 8.230 min Scan# 1067  
 Delta R.T. -0.029 min  
 Lab File: VN079847.D  
 Acq: 03 Nov 2023 14:28

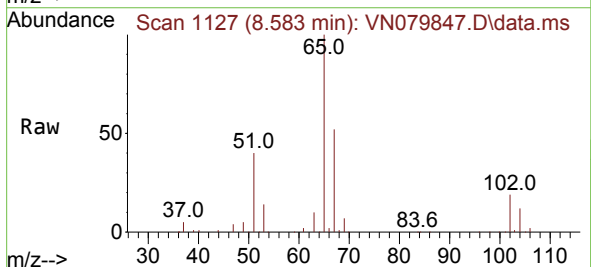
Instrument :  
 MSVOA\_N  
 ClientSampleId :



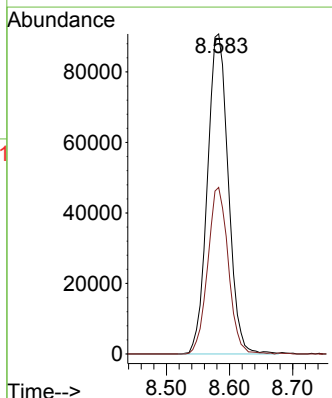
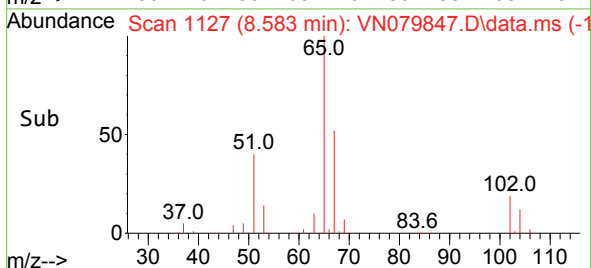
Tgt Ion: 56 Resp: 6205  
 Ion Ratio Lower Upper  
 56 100  
 69 175.4 26.8 40.2#  
 84 131.8 81.8 122.6#

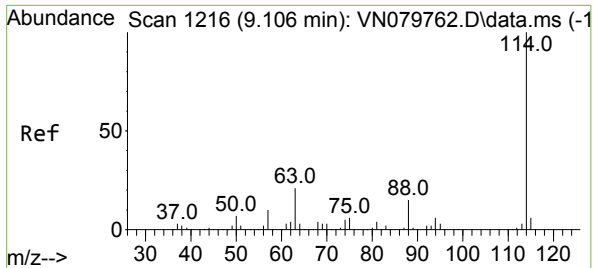


#33  
 1,2-Dichloroethane-d4  
 Concen: 56.726 ug/l  
 RT: 8.583 min Scan# 1127  
 Delta R.T. 0.000 min  
 Lab File: VN079847.D  
 Acq: 03 Nov 2023 14:28



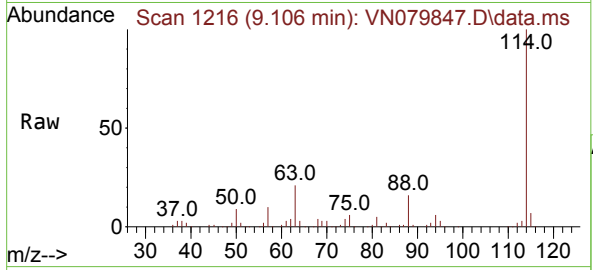
Tgt Ion: 65 Resp: 208359  
 Ion Ratio Lower Upper  
 65 100  
 67 51.3 0.0 106.6





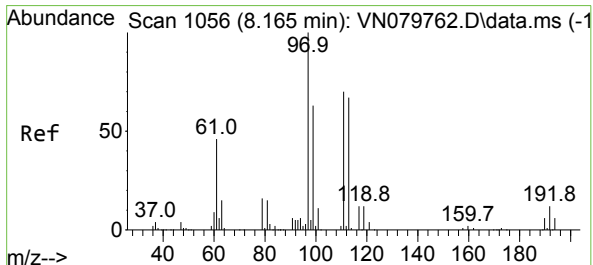
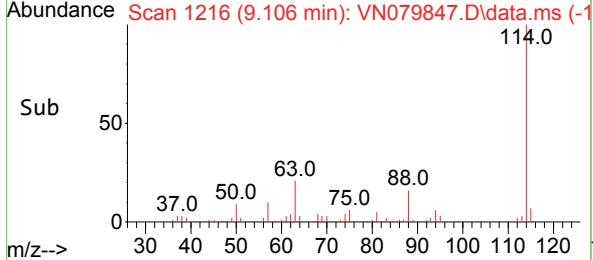
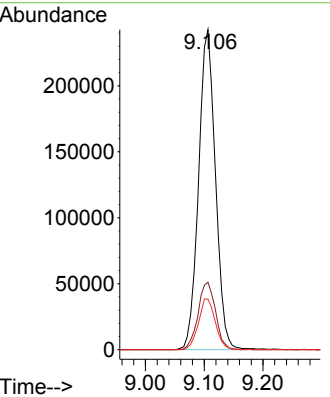
#34  
 1,4-Difluorobenzene  
 Concen: 50.000 ug/l  
 RT: 9.106 min Scan# 11  
 Delta R.T. 0.000 min  
 Lab File: VN079847.D  
 Acq: 03 Nov 2023 14:28

Instrument : MSVOA\_N  
 ClientSampleId :



Tgt Ion:114 Resp: 483792

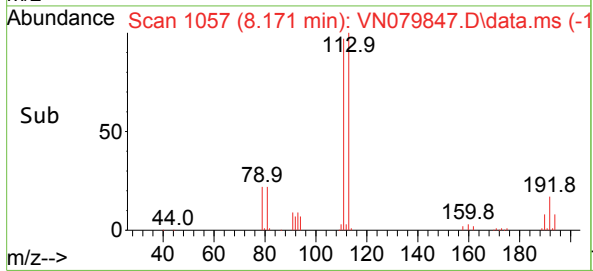
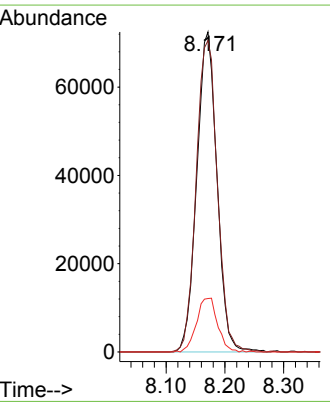
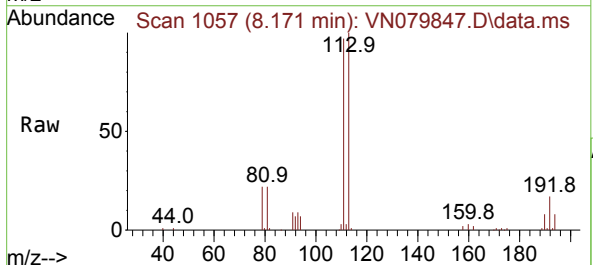
Ion	Ratio	Lower	Upper
114	100		
63	21.1	0.0	36.4
88	15.8	0.0	30.6

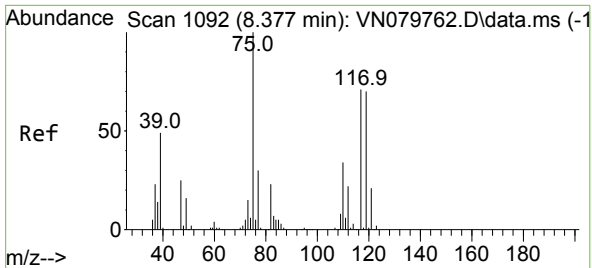


#35  
 Dibromofluoromethane  
 Concen: 50.586 ug/l  
 RT: 8.171 min Scan# 1057  
 Delta R.T. 0.000 min  
 Lab File: VN079847.D  
 Acq: 03 Nov 2023 14:28

Tgt Ion:113 Resp: 173212

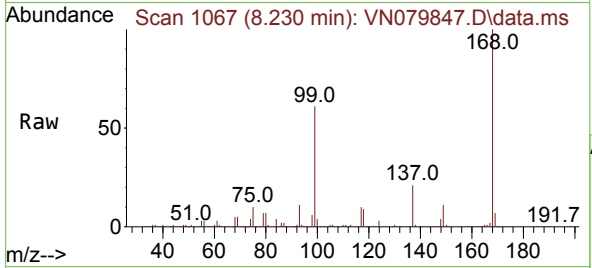
Ion	Ratio	Lower	Upper
113	100		
111	101.9	82.6	123.8
192	17.5	12.7	19.1



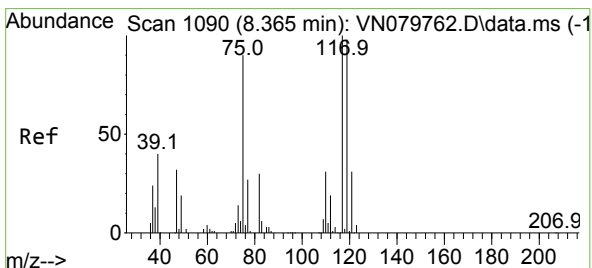
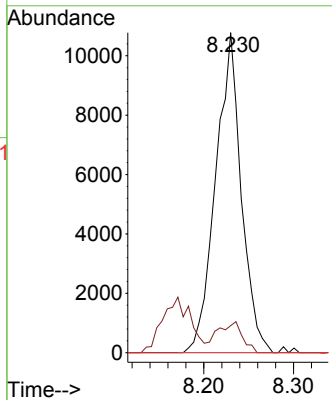
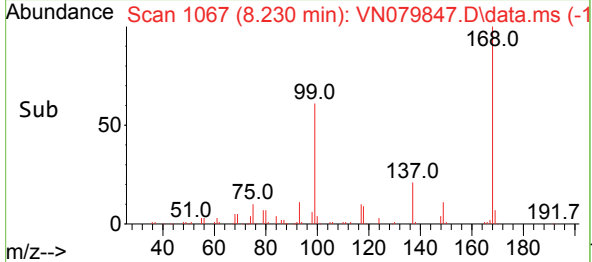


#36  
 1,1-Dichloropropene  
 Concen: 4.363 ug/l  
 RT: 8.230 min Scan# 1067  
 Delta R.T. -0.147 min  
 Lab File: VN079847.D  
 Acq: 03 Nov 2023 14:28

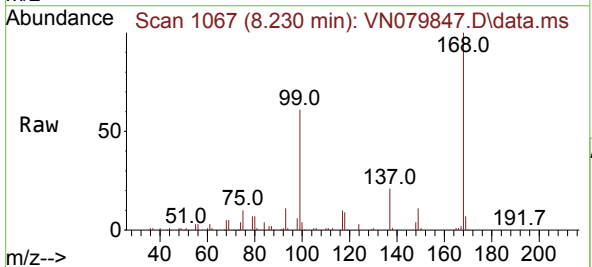
Instrument : MSVOA\_N  
 ClientSampleId :



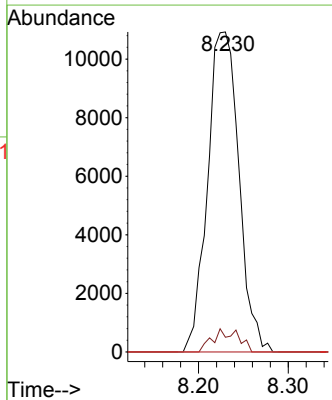
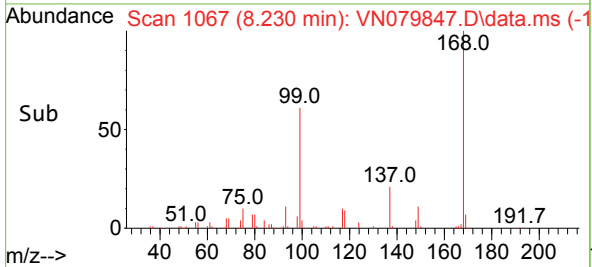
Tgt Ion: 75 Resp: 21332  
 Ion Ratio Lower Upper  
 75 100  
 110 9.6 19.1 57.3#  
 77 0.0 25.0 37.4#



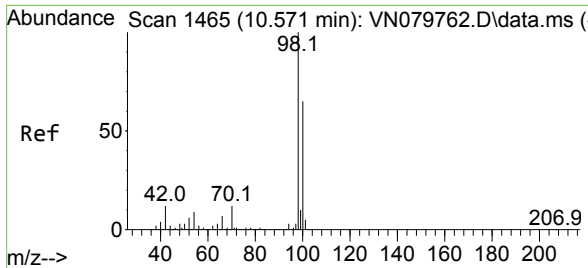
#38  
 Carbon Tetrachloride  
 Concen: 5.386 ug/l  
 RT: 8.230 min Scan# 1067  
 Delta R.T. -0.129 min  
 Lab File: VN079847.D  
 Acq: 03 Nov 2023 14:28



Tgt Ion: 117 Resp: 26536  
 Ion Ratio Lower Upper  
 117 100  
 119 4.6 77.3 115.9#  
 121 0.0 23.3 34.9#

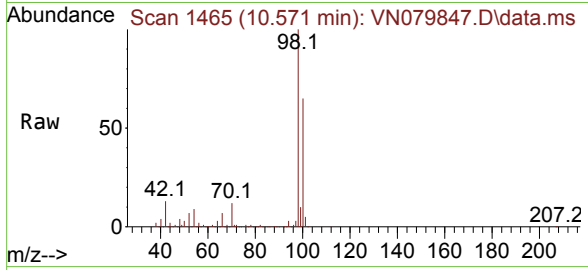




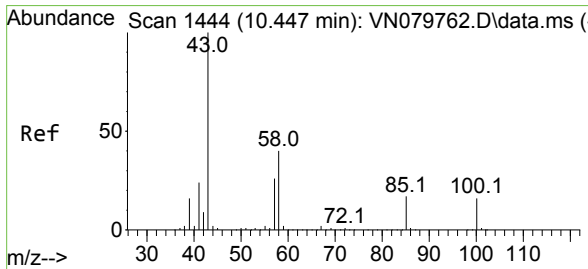
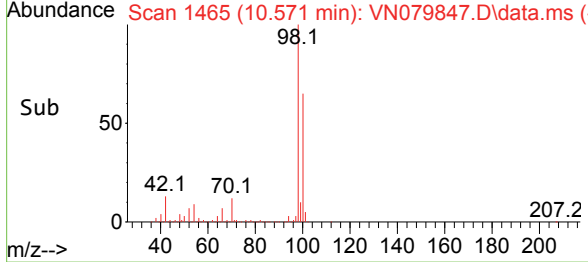
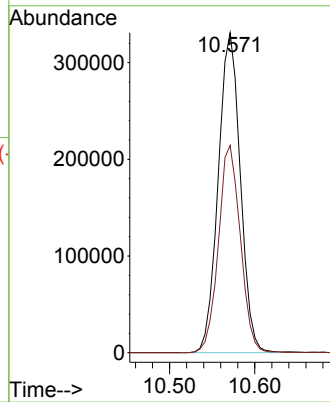


#50  
 Toluene-d8  
 Concen: 47.253 ug/l  
 RT: 10.571 min Scan# 1465  
 Delta R.T. 0.000 min  
 Lab File: VN079847.D  
 Acq: 03 Nov 2023 14:28

Instrument : MSVOA\_N  
 ClientSampleId :

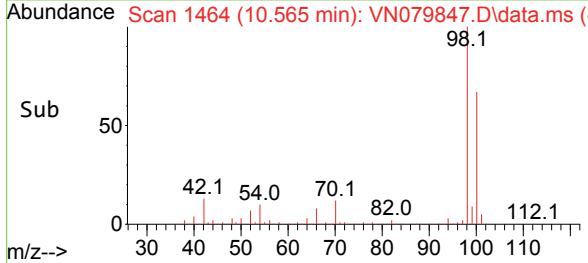
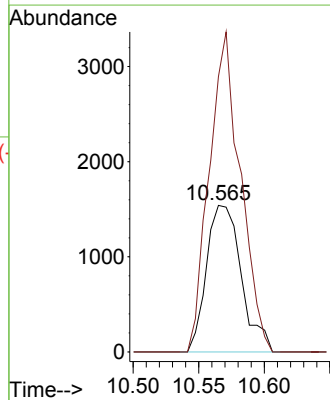
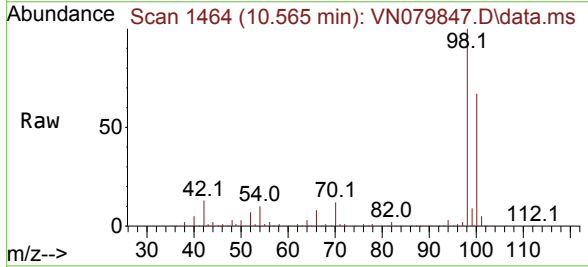


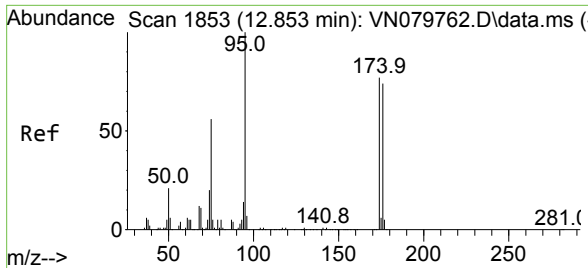
Tgt Ion: 98 Resp: 595632  
 Ion Ratio Lower Upper  
 98 100  
 100 64.4 52.0 78.0



#51  
 4-Methyl-2-Pentanone  
 Concen: 0.641 ug/l  
 RT: 10.565 min Scan# 1464  
 Delta R.T. 0.118 min  
 Lab File: VN079847.D  
 Acq: 03 Nov 2023 14:28

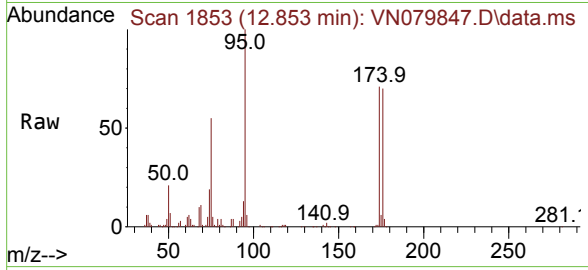
Tgt Ion: 43 Resp: 2839  
 Ion Ratio Lower Upper  
 43 100  
 58 196.9 36.6 54.8#



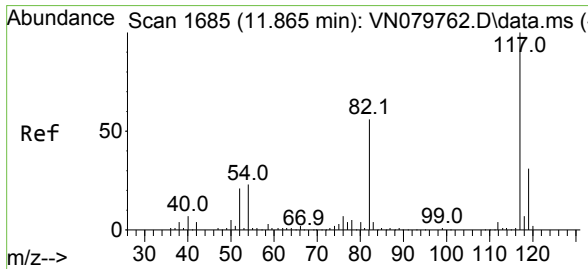
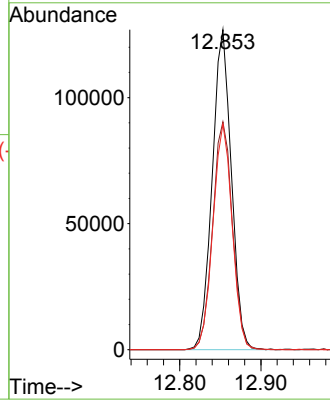
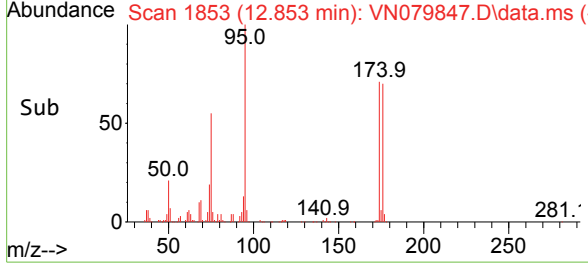


#62  
 4-Bromofluorobenzene  
 Concen: 49.688 ug/l  
 RT: 12.853 min Scan# 1853  
 Delta R.T. 0.000 min  
 Lab File: VN079847.D  
 Acq: 03 Nov 2023 14:28

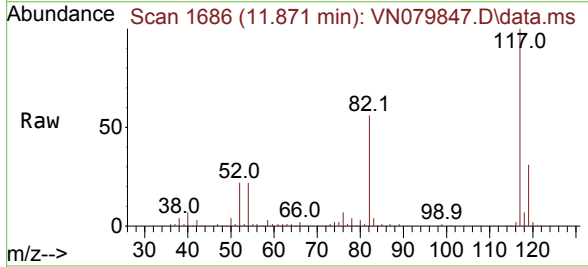
Instrument : MSVOA\_N  
 ClientSampleId :



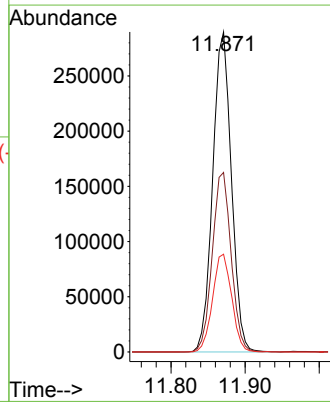
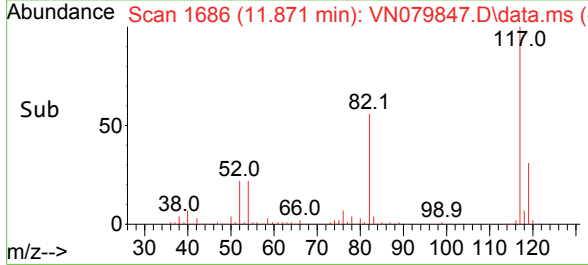
Tgt Ion: 95 Resp: 207725  
 Ion Ratio Lower Upper  
 95 100  
 174 73.7 0.0 143.8  
 176 70.9 0.0 135.8

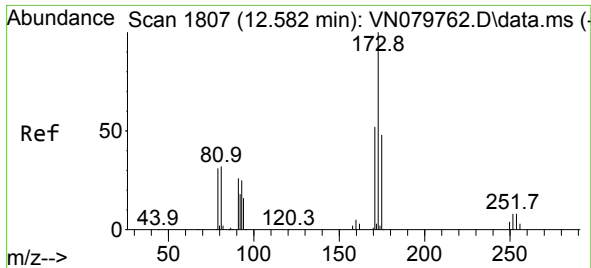


#63  
 Chlorobenzene-d5  
 Concen: 50.000 ug/l  
 RT: 11.871 min Scan# 1686  
 Delta R.T. 0.000 min  
 Lab File: VN079847.D  
 Acq: 03 Nov 2023 14:28



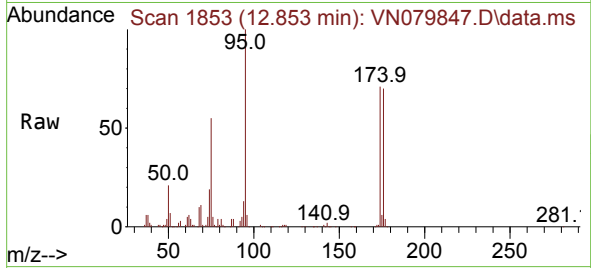
Tgt Ion: 117 Resp: 506348  
 Ion Ratio Lower Upper  
 117 100  
 82 56.1 44.0 66.0  
 119 30.5 25.6 38.4



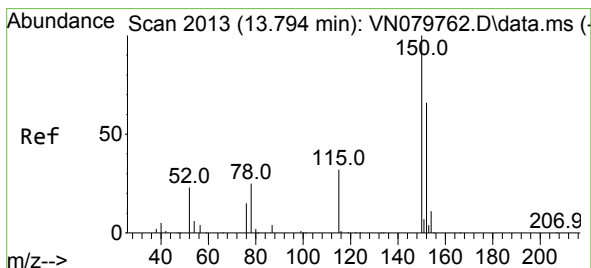
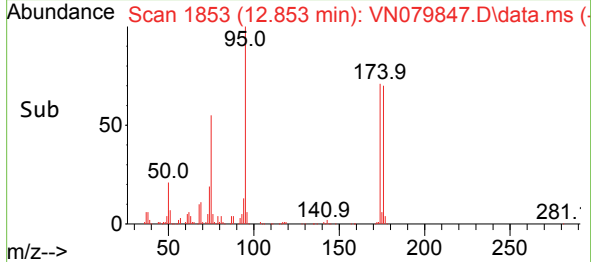
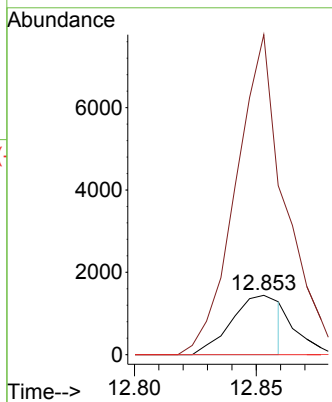


#71  
 Bromoform  
 Concen: 0.719 ug/l  
 RT: 12.853 min Scan# 1807  
 Delta R.T. 0.271 min  
 Lab File: VN079847.D  
 Acq: 03 Nov 2023 14:28

Instrument :  
 MSVOA\_N  
 ClientSampleId :

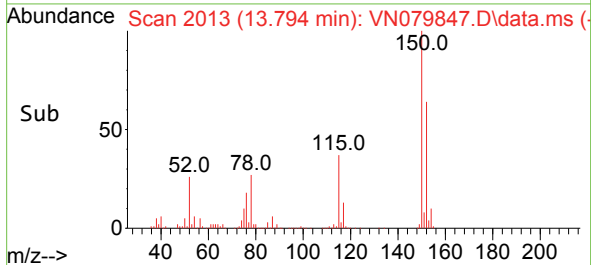
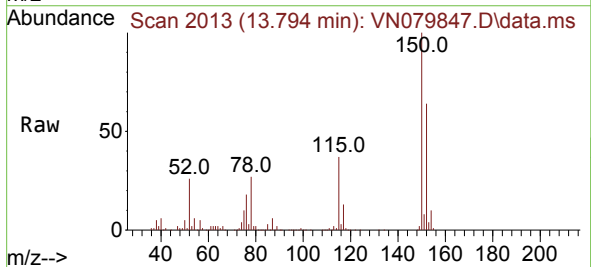
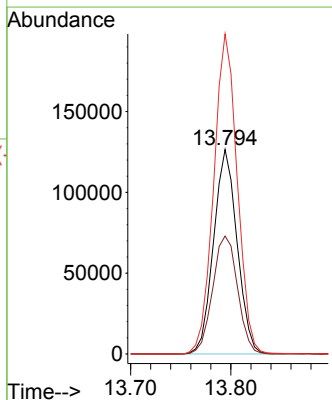


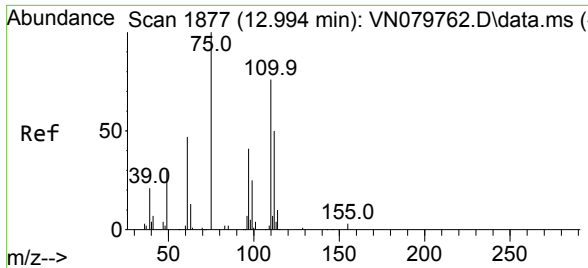
Tgt Ion:173 Resp: 2019  
 Ion Ratio Lower Upper  
 173 100  
 175 439.3 24.3 73.0#  
 254 0.0 0.0 0.0



#72  
 1,4-Dichlorobenzene-d4  
 Concen: 50.000 ug/l  
 RT: 13.794 min Scan# 2013  
 Delta R.T. 0.000 min  
 Lab File: VN079847.D  
 Acq: 03 Nov 2023 14:28

Tgt Ion:152 Resp: 205591  
 Ion Ratio Lower Upper  
 152 100  
 115 61.1 32.3 96.8  
 150 156.5 0.0 355.8

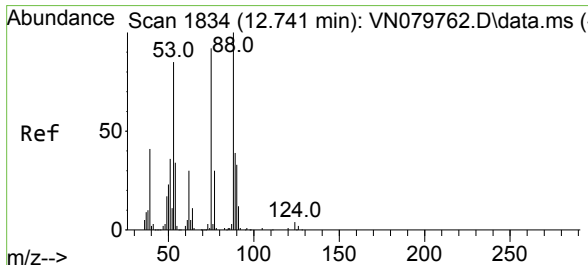
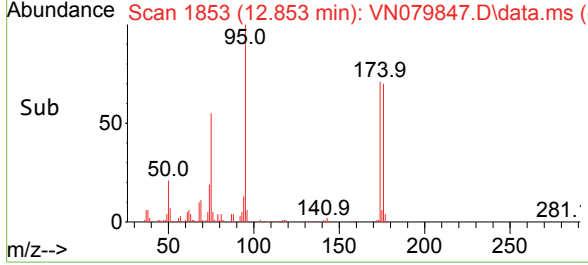
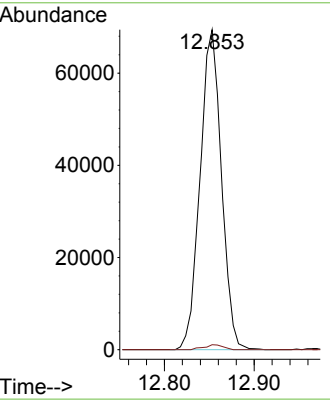
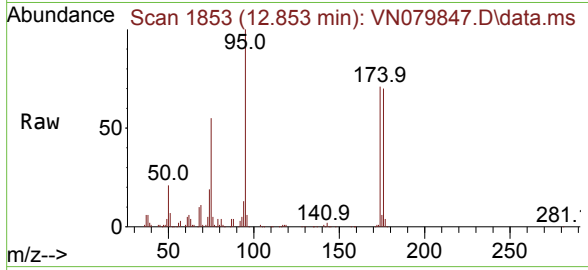




#76  
 1,2,3-Trichloropropane  
 Concen: 23.752 ug/l  
 RT: 12.853 min Scan# 1853  
 Delta R.T. -0.141 min  
 Lab File: VN079847.D  
 Acq: 03 Nov 2023 14:28

Instrument : MSVOA\_N  
 ClientSampleId :

Tgt Ion: 75 Resp: 114642  
 Ion Ratio Lower Upper  
 75 100  
 77 1.4 84.5 253.5#



#81  
 trans-1,4-Dichloro-2-butene  
 Concen: 64.623 ug/l  
 RT: 12.853 min Scan# 1853  
 Delta R.T. 0.118 min  
 Lab File: VN079847.D  
 Acq: 03 Nov 2023 14:28

Tgt Ion: 75 Resp: 114642  
 Ion Ratio Lower Upper  
 75 100  
 53 0.1 67.4 101.2#  
 89 0.0 38.8 58.2#

