

Data Path : Z:\voasrv\HPCHEM1\MSVOA_N\Data\VN110323\
 Data File : VN079848.D
 Acq On : 03 Nov 2023 14:52
 Operator : JC\MD
 Sample : 05225-04RE
 Misc : 5.0mL/MSVOA_N/WATER
 ALS Vial : 12 Sample Multiplier: 1

Instrument :
 MSVOA_N
 ClientSampleId :
 BP-VPB-188-GW-340-342

Quant Time: Nov 04 00:53:00 2023
 Quant Method : Z:\voasrv\HPCHEM1\MSVOA_N\methods\82N110123W.M
 Quant Title : SW846 8260
 QLast Update : Thu Nov 02 05:49:08 2023
 Response via : Initial Calibration

Compound	R.T.	QIon	Response	Conc	Units	Dev(Min)

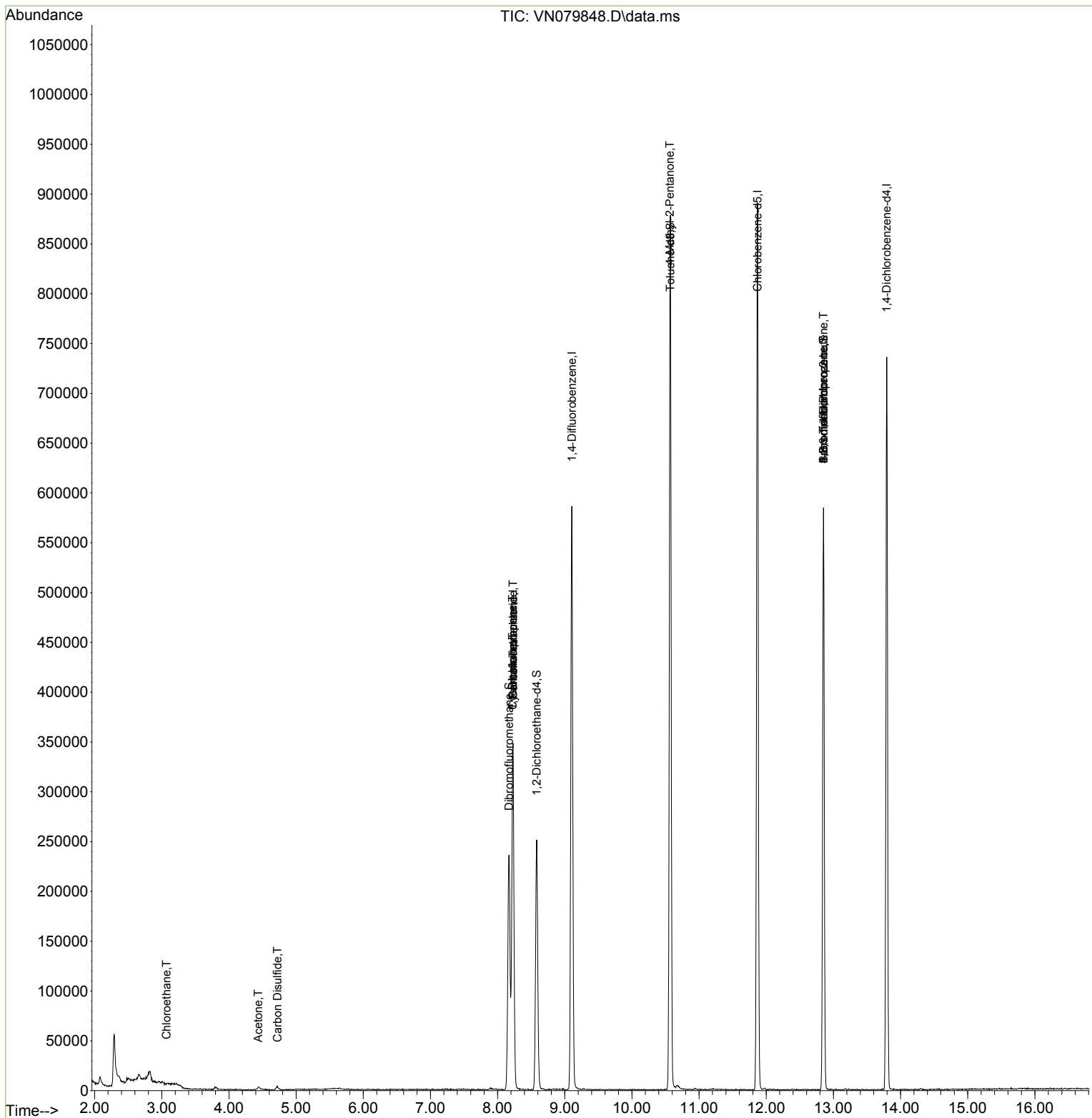
Internal Standards						
1) Pentafluorobenzene	8.230	168	241731	50.000	ug/l	0.00
34) 1,4-Difluorobenzene	9.106	114	480530	50.000	ug/l	0.00
63) Chlorobenzene-d5	11.871	117	494117	50.000	ug/l	0.00
72) 1,4-Dichlorobenzene-d4	13.794	152	185407	50.000	ug/l	0.00
System Monitoring Compounds						
33) 1,2-Dichloroethane-d4	8.583	65	202330	54.938	ug/l	0.00
Spiked Amount	50.000	Range	74 - 125	Recovery	=	109.880%
35) Dibromofluoromethane	8.171	113	168143	49.439	ug/l	0.00
Spiked Amount	50.000	Range	75 - 124	Recovery	=	98.880%
50) Toluene-d8	10.571	98	580834	46.391	ug/l	0.00
Spiked Amount	50.000	Range	86 - 113	Recovery	=	92.780%
62) 4-Bromofluorobenzene	12.853	95	192692	46.405	ug/l	0.00
Spiked Amount	50.000	Range	83 - 123	Recovery	=	92.820%
Target Compounds						
					Qvalue	
3) Chloromethane	2.359	50	2017	Below Cal		97
6) Chloroethane	3.071	64	862	0.286	ug/l #	43
16) Acetone	4.436	43	5252	4.060	ug/l #	82
17) Carbon Disulfide	4.724	76	4196	0.559	ug/l #	88
31) Cyclohexane	8.224	56	6519	1.340	ug/l #	49
36) 1,1-Dichloropropene	8.224	75	21768	4.483	ug/l #	48
38) Carbon Tetrachloride	8.230	117	26910	5.499	ug/l #	15
51) 4-Methyl-2-Pentanone	10.565	43	2945	0.670	ug/l #	1
71) Bromoform	12.853	173	1999	0.729	ug/l #	1
76) 1,2,3-Trichloropropane	12.853	75	105072	24.139	ug/l #	1
81) trans-1,4-Dichloro-2-b...	12.853	75	105072	65.676	ug/l #	15

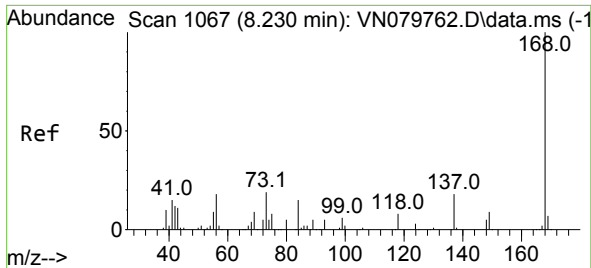
(#) = qualifier out of range (m) = manual integration (+) = signals summed

Data Path : Z:\voasrv\HPCHEM1\MSVOA_N\Data\VN110323\
Data File : VN079848.D
Acq On : 03 Nov 2023 14:52
Operator : JC\MD
Sample : 05225-04RE
Misc : 5.0mL/MSVOA_N/WATER
ALS Vial : 12 Sample Multiplier: 1

Instrument :
MSVOA_N
ClientSampleId :
BP-VPB-188-GW-340-342

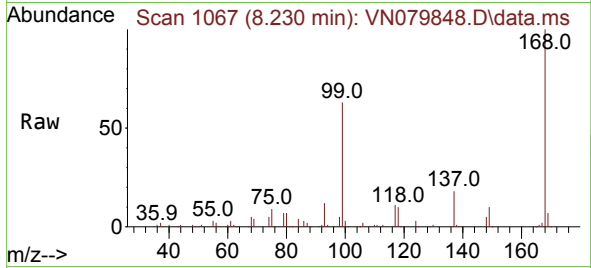
Quant Time: Nov 04 00:53:00 2023
Quant Method : Z:\voasrv\HPCHEM1\MSVOA_N\methods\82N110123W.M
Quant Title : SW846 8260
QLast Update : Thu Nov 02 05:49:08 2023
Response via : Initial Calibration



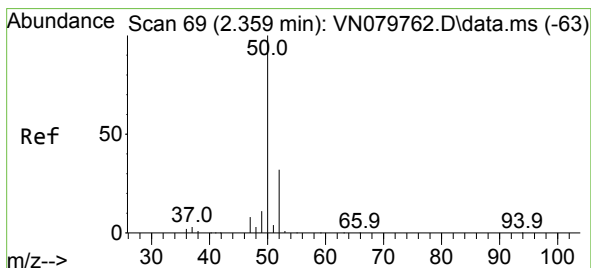
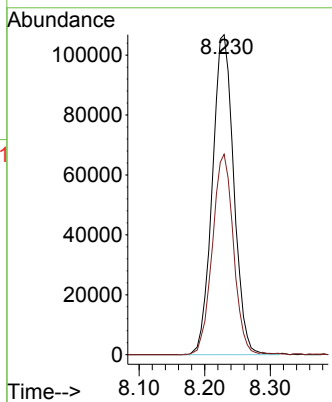
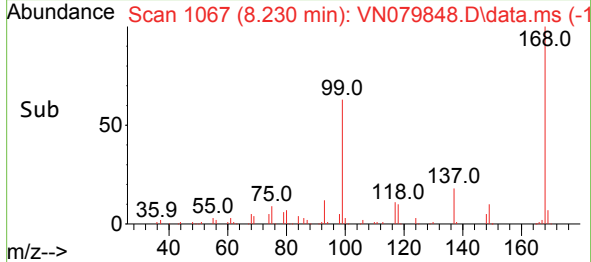


#1
 Pentafluorobenzene
 Concen: 50.000 ug/l
 RT: 8.230 min Scan# 10
 Delta R.T. 0.001 min
 Lab File: VN079848.D
 Acq: 03 Nov 2023 14:52

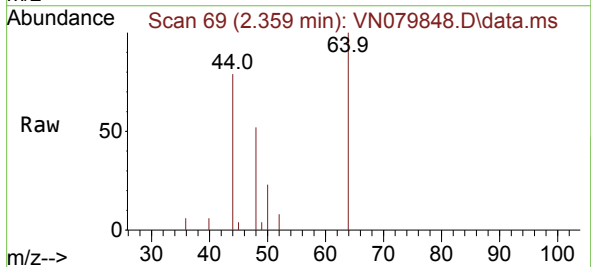
Instrument : MSVOA_N
 ClientSampleId : BP-VPB-188-GW-340-342



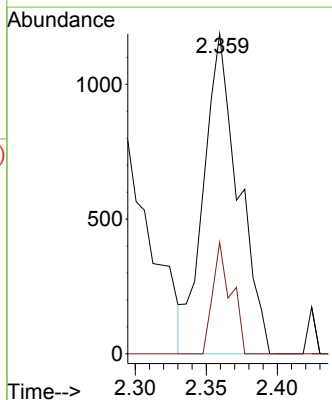
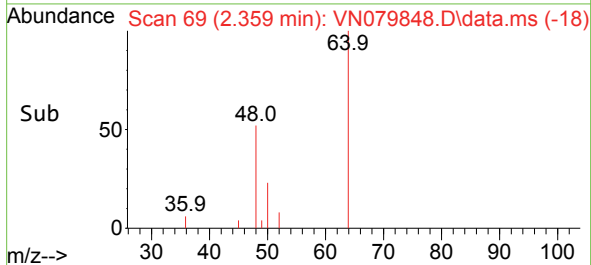
Tgt Ion:168 Resp: 241731
 Ion Ratio Lower Upper
 168 100
 99 62.7 53.0 79.6

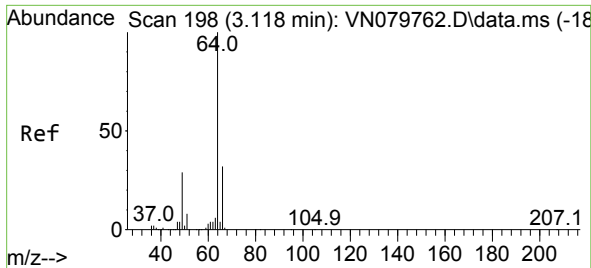


#3
 Chloromethane
 Concen: Below Cal
 RT: 2.359 min Scan# 69
 Delta R.T. 0.000 min
 Lab File: VN079848.D
 Acq: 03 Nov 2023 14:52



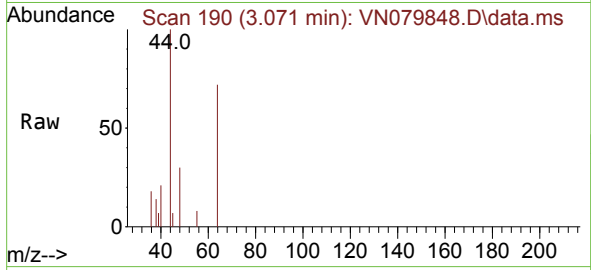
Tgt Ion: 50 Resp: 2017
 Ion Ratio Lower Upper
 50 100
 52 34.9 26.5 39.7



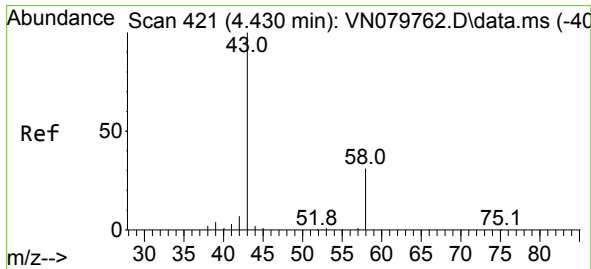
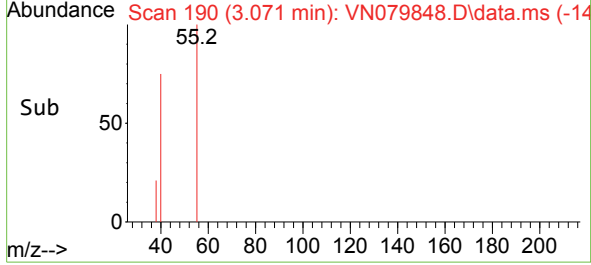
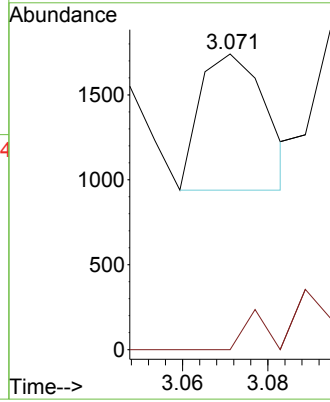


#6
 Chloroethane
 Concen: 0.286 ug/l
 RT: 3.071 min Scan# 198
 Delta R.T. -0.047 min
 Lab File: VN079848.D
 Acq: 03 Nov 2023 14:52

Instrument : MSVOA_N
 ClientSampleId : BP-VPB-188-GW-340-342

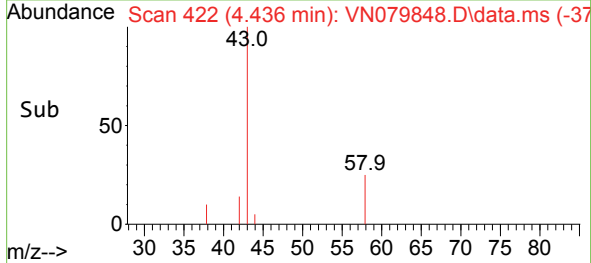
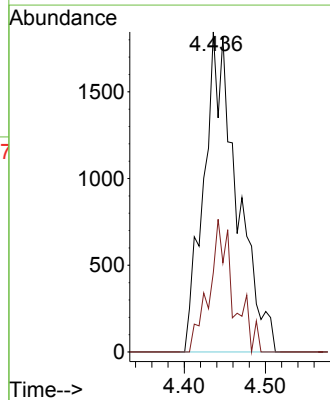
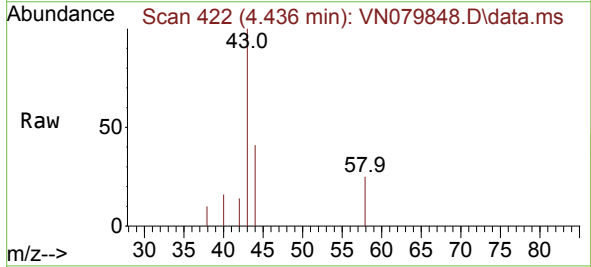


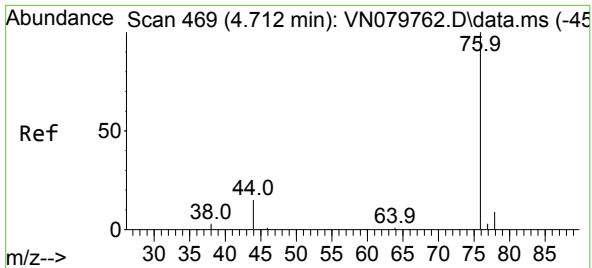
Tgt Ion: 64 Resp: 862
 Ion Ratio Lower Upper
 64 100
 66 0.0 25.4 38.2#



#16
 Acetone
 Concen: 4.060 ug/l
 RT: 4.436 min Scan# 422
 Delta R.T. 0.006 min
 Lab File: VN079848.D
 Acq: 03 Nov 2023 14:52

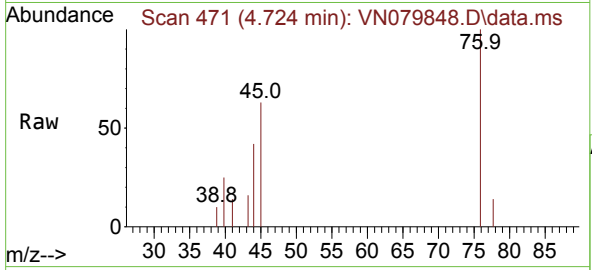
Tgt Ion: 43 Resp: 5252
 Ion Ratio Lower Upper
 43 100
 58 24.8 28.0 42.0#



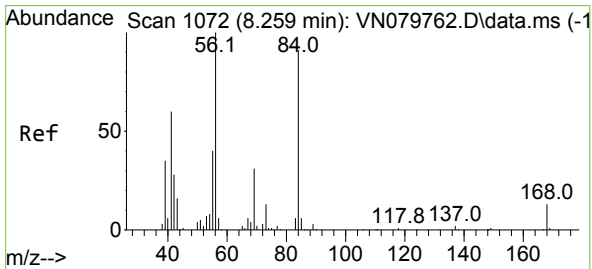
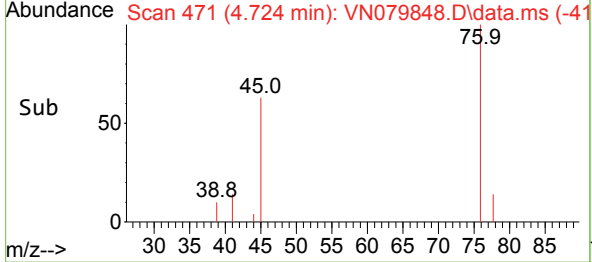
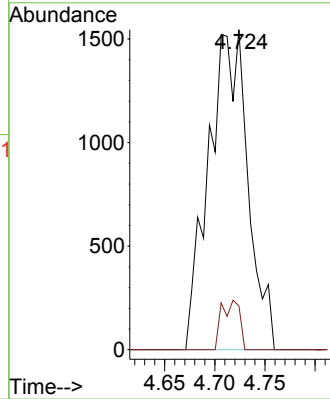


#17
 Carbon Disulfide
 Concen: 0.559 ug/l
 RT: 4.724 min Scan# 41
 Delta R.T. 0.012 min
 Lab File: VN079848.D
 Acq: 03 Nov 2023 14:52

Instrument : MSVOA_N
 ClientSampleId : BP-VPB-188-GW-340-342

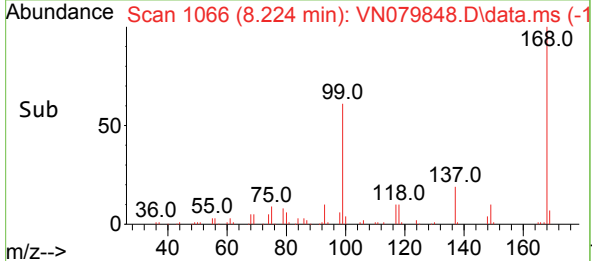
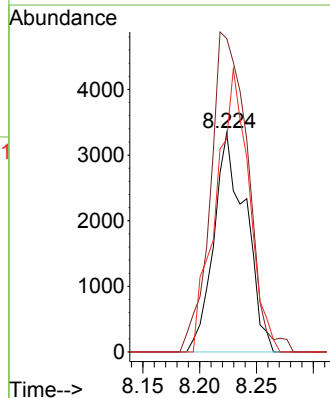
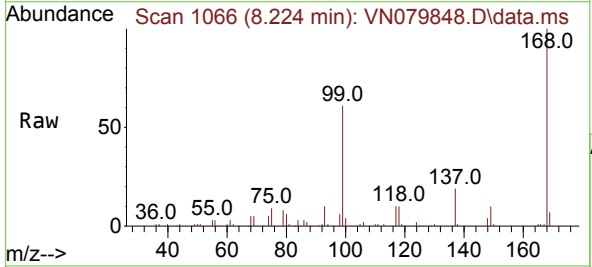


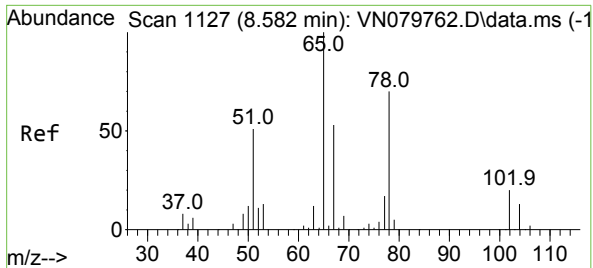
Tgt Ion: 76 Resp: 4196
 Ion Ratio Lower Upper
 76 100
 78 13.7 7.4 11.0#



#31
 Cyclohexane
 Concen: 1.340 ug/l
 RT: 8.224 min Scan# 1066
 Delta R.T. -0.035 min
 Lab File: VN079848.D
 Acq: 03 Nov 2023 14:52

Tgt Ion: 56 Resp: 6519
 Ion Ratio Lower Upper
 56 100
 69 143.1 26.8 40.2#
 84 97.2 81.8 122.6

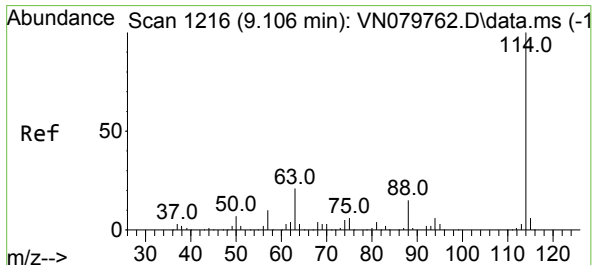
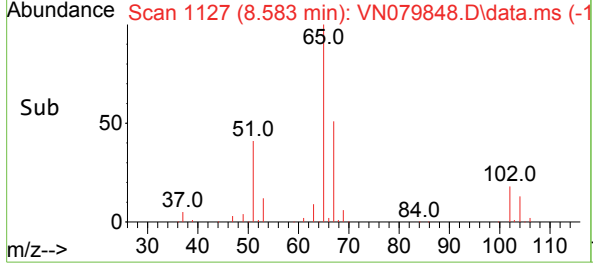
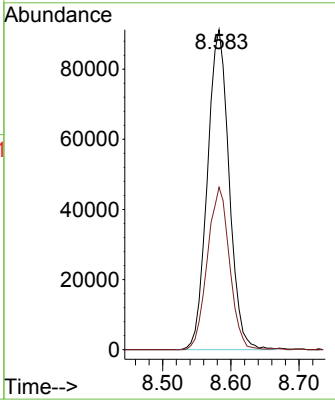
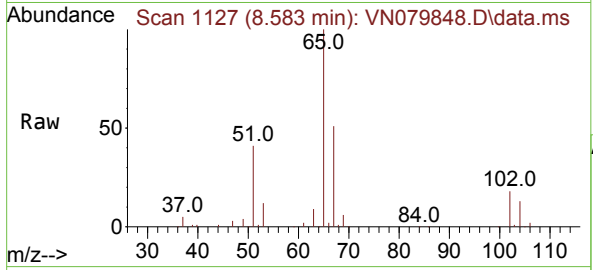




#33
 1,2-Dichloroethane-d4
 Concen: 54.938 ug/l
 RT: 8.583 min Scan# 1127
 Delta R.T. 0.000 min
 Lab File: VN079848.D
 Acq: 03 Nov 2023 14:52

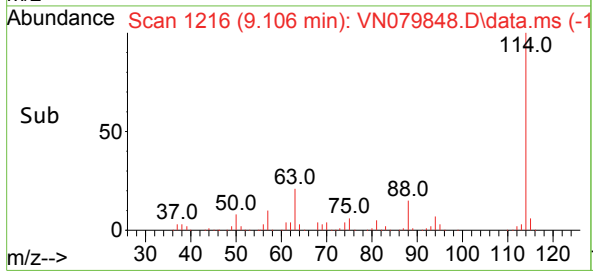
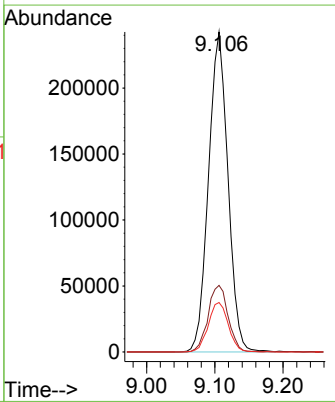
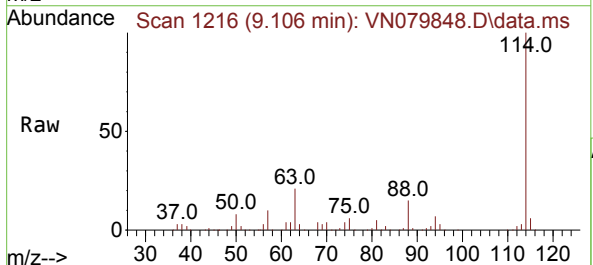
Instrument : MSVOA_N
 ClientSampleId : BP-VPB-188-GW-340-342

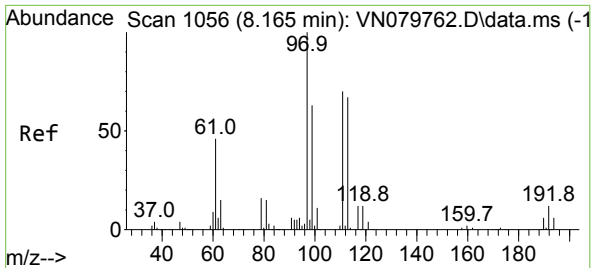
Tgt Ion: 65 Resp: 202330
 Ion Ratio Lower Upper
 65 100
 67 51.8 0.0 106.6



#34
 1,4-Difluorobenzene
 Concen: 50.000 ug/l
 RT: 9.106 min Scan# 1216
 Delta R.T. 0.000 min
 Lab File: VN079848.D
 Acq: 03 Nov 2023 14:52

Tgt Ion:114 Resp: 480530
 Ion Ratio Lower Upper
 114 100
 63 20.8 0.0 36.4
 88 15.4 0.0 30.6



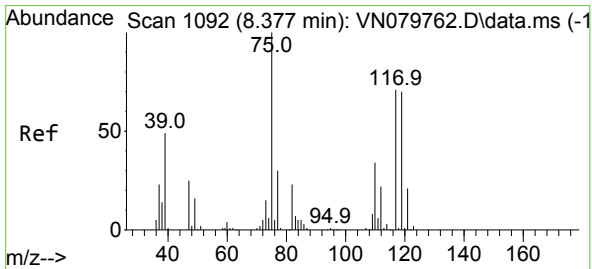
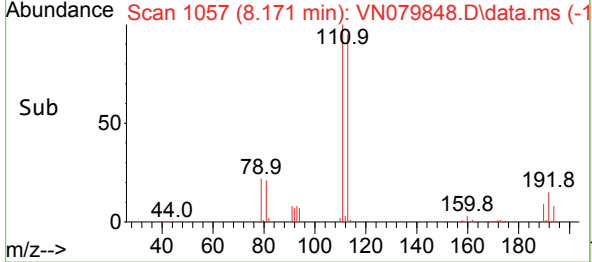
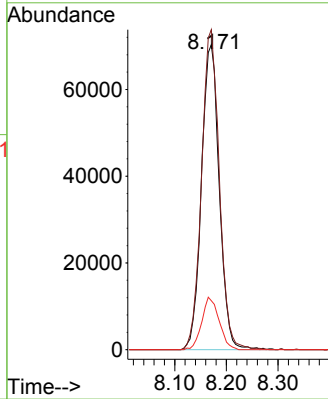
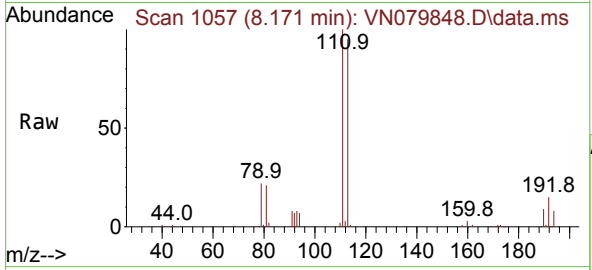


#35
 Dibromofluoromethane
 Concen: 49.439 ug/l
 RT: 8.171 min Scan# 1066
 Delta R.T. 0.000 min
 Lab File: VN079848.D
 Acq: 03 Nov 2023 14:52

Instrument : MSVOA_N
 ClientSampleId : BP-VPB-188-GW-340-342

Tgt Ion: 113 Resp: 168143

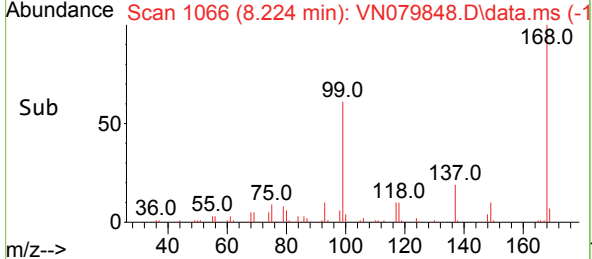
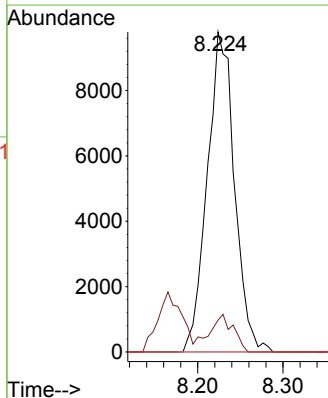
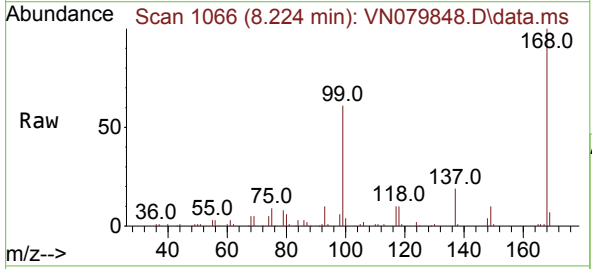
Ion	Ratio	Lower	Upper
113	100		
111	104.7	82.6	123.8
192	16.7	12.7	19.1

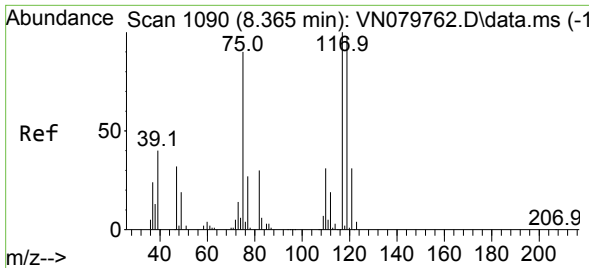


#36
 1,1-Dichloropropene
 Concen: 4.483 ug/l
 RT: 8.224 min Scan# 1066
 Delta R.T. -0.153 min
 Lab File: VN079848.D
 Acq: 03 Nov 2023 14:52

Tgt Ion: 75 Resp: 21768

Ion	Ratio	Lower	Upper
75	100		
110	9.0	19.1	57.3#
77	0.0	25.0	37.4#

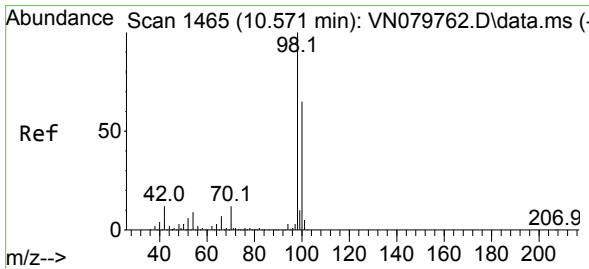
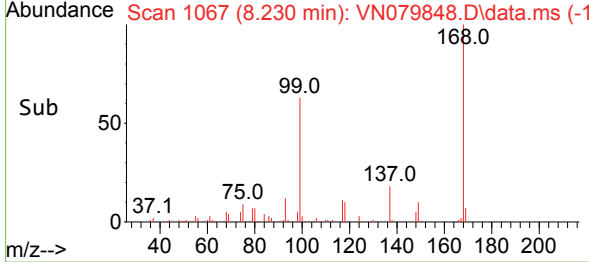
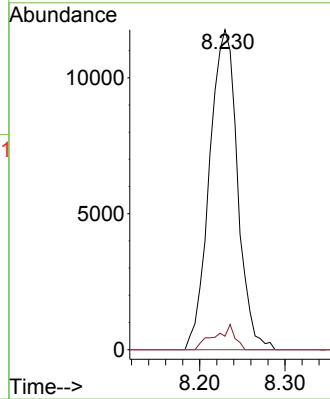
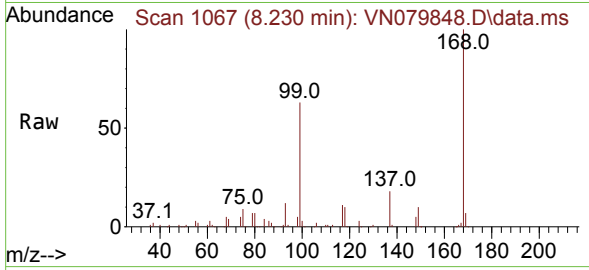




#38
 Carbon Tetrachloride
 Concen: 5.499 ug/l
 RT: 8.230 min Scan# 1067
 Delta R.T. -0.129 min
 Lab File: VN079848.D
 Acq: 03 Nov 2023 14:52

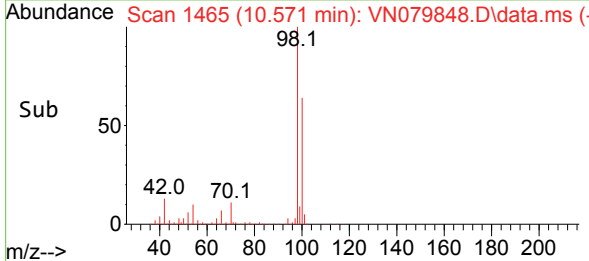
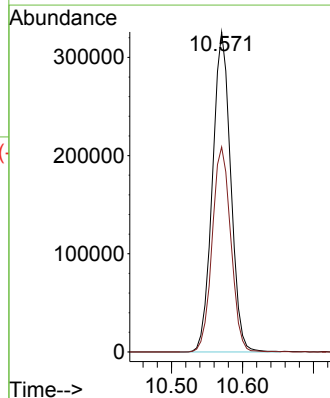
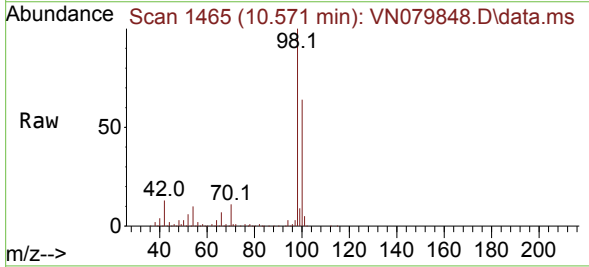
Instrument : MSVOA_N
 ClientSampleId : BP-VPB-188-GW-340-342

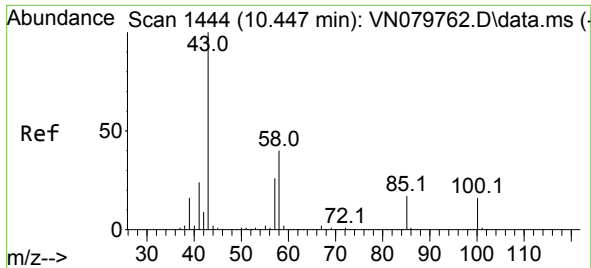
Tgt Ion	Resp	Lower	Upper
117	26910		
119	4.2	77.3	115.9#
121	0.0	23.3	34.9#



#50
 Toluene-d8
 Concen: 46.391 ug/l
 RT: 10.571 min Scan# 1465
 Delta R.T. 0.000 min
 Lab File: VN079848.D
 Acq: 03 Nov 2023 14:52

Tgt Ion	Resp	Lower	Upper
98	580834		
100	65.3	52.0	78.0

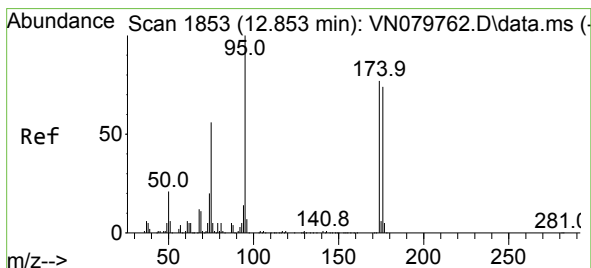
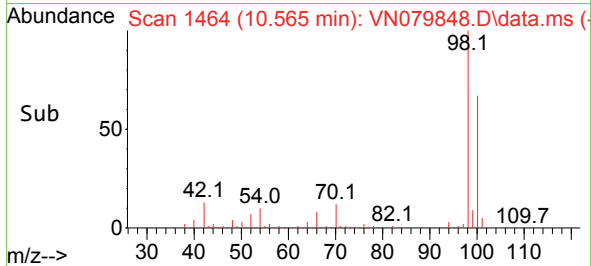
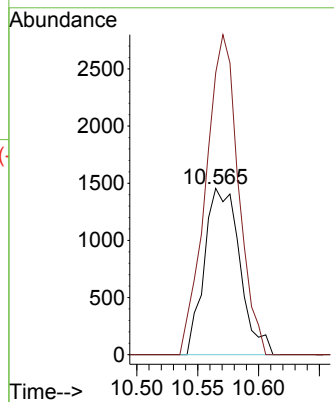
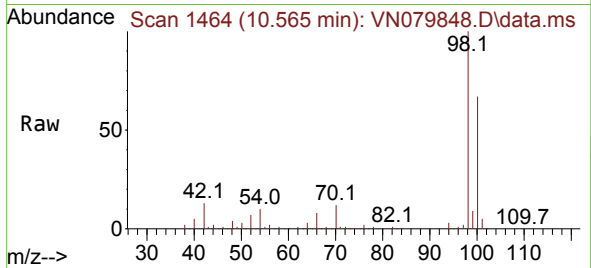




#51
 4-Methyl-2-Pentanone
 Concen: 0.670 ug/l
 RT: 10.565 min Scan# 1444
 Delta R.T. 0.118 min
 Lab File: VN079848.D
 Acq: 03 Nov 2023 14:52

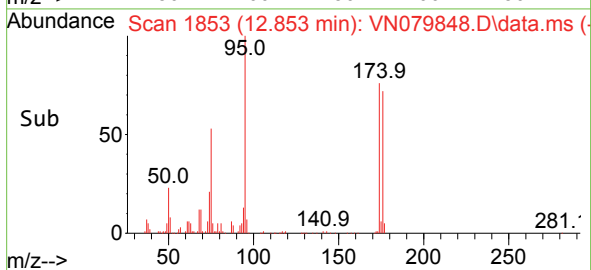
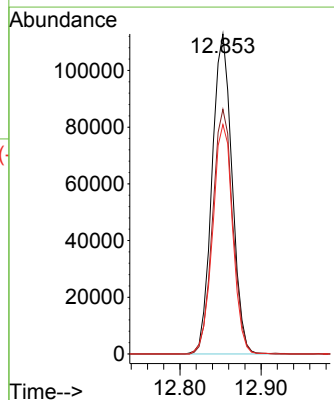
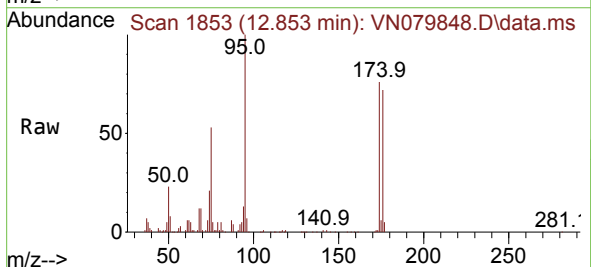
Instrument : MSVOA_N
 ClientSampleId : BP-VPB-188-GW-340-342

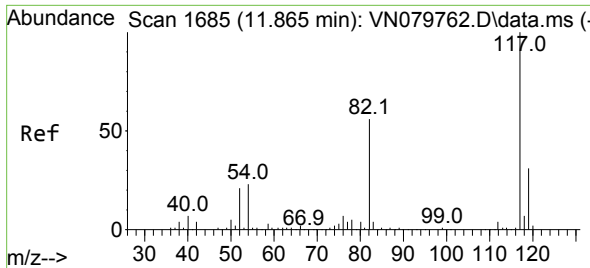
Tgt Ion: 43 Resp: 2945
 Ion Ratio Lower Upper
 43 100
 58 178.1 36.6 54.8#



#62
 4-Bromofluorobenzene
 Concen: 46.405 ug/l
 RT: 12.853 min Scan# 1853
 Delta R.T. 0.000 min
 Lab File: VN079848.D
 Acq: 03 Nov 2023 14:52

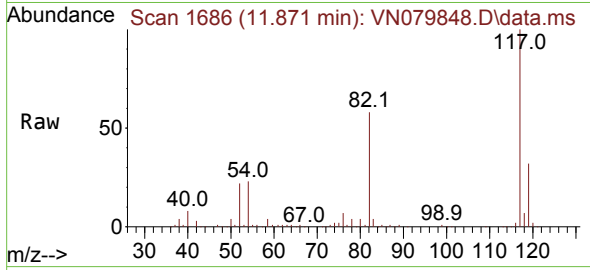
Tgt Ion: 95 Resp: 192692
 Ion Ratio Lower Upper
 95 100
 174 77.6 0.0 143.8
 176 71.9 0.0 135.8



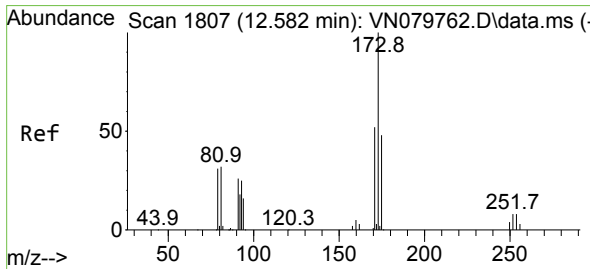
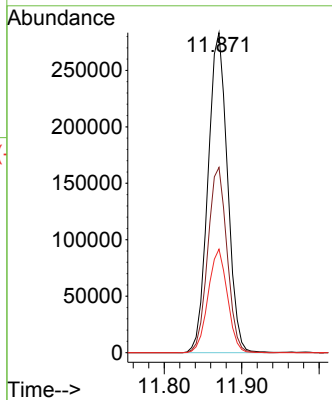
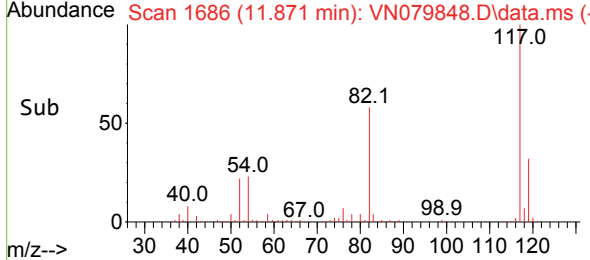


#63
 Chlorobenzene-d5
 Concen: 50.000 ug/l
 RT: 11.871 min Scan# 117
 Delta R.T. 0.000 min
 Lab File: VN079848.D
 Acq: 03 Nov 2023 14:52

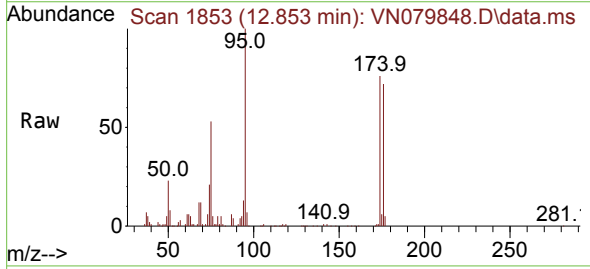
Instrument : MSVOA_N
 ClientSampleId : BP-VPB-188-GW-340-342



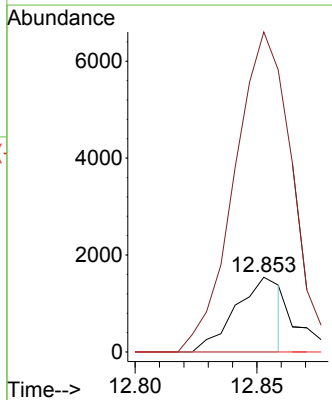
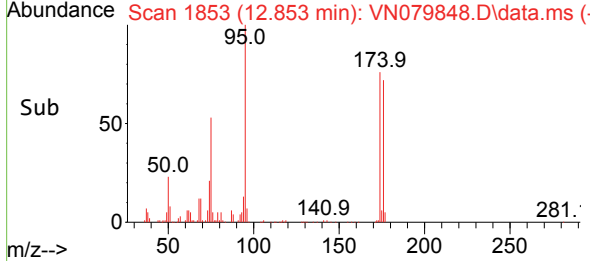
Tgt Ion:117 Resp: 494117
 Ion Ratio Lower Upper
 117 100
 82 57.9 44.0 66.0
 119 32.3 25.6 38.4

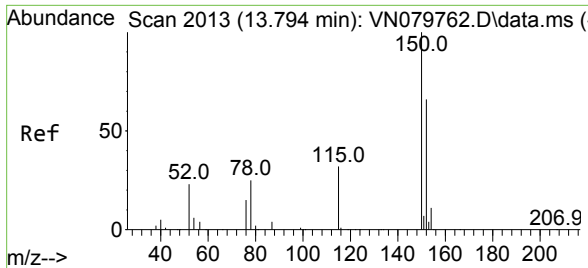


#71
 Bromoform
 Concen: 0.729 ug/l
 RT: 12.853 min Scan# 1853
 Delta R.T. 0.271 min
 Lab File: VN079848.D
 Acq: 03 Nov 2023 14:52



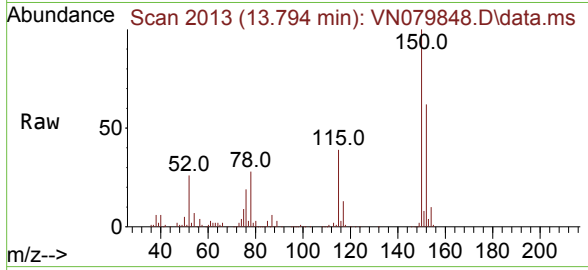
Tgt Ion:173 Resp: 1999
 Ion Ratio Lower Upper
 173 100
 175 437.5 24.3 73.0#
 254 0.0 0.0 0.0



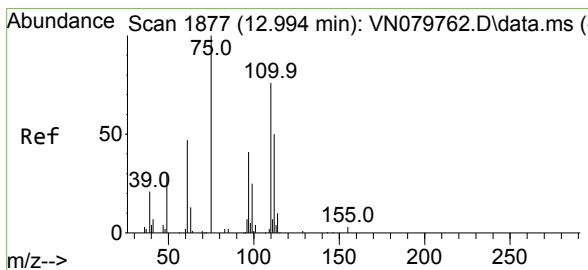
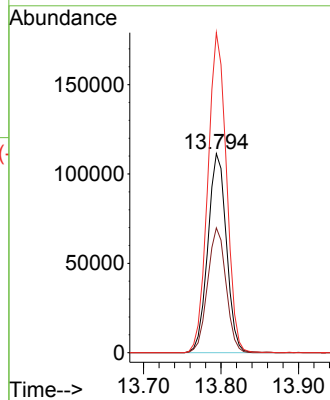
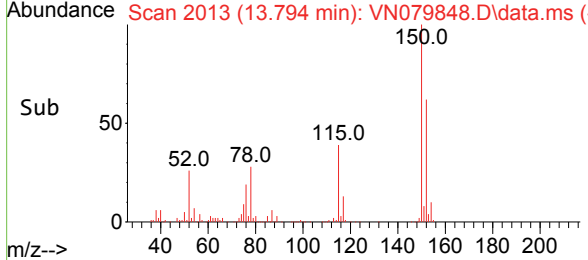


#72
 1,4-Dichlorobenzene-d4
 Concen: 50.000 ug/l
 RT: 13.794 min Scan# 20
 Delta R.T. 0.000 min
 Lab File: VN079848.D
 Acq: 03 Nov 2023 14:52

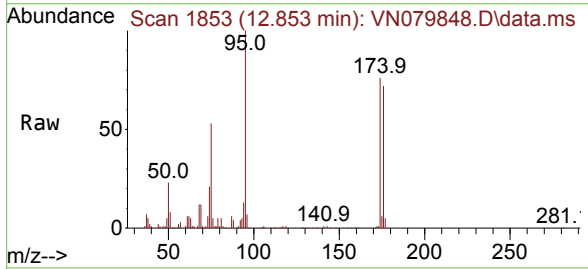
Instrument : MSVOA_N
 Client Sample Id : BP-VPB-188-GW-340-342



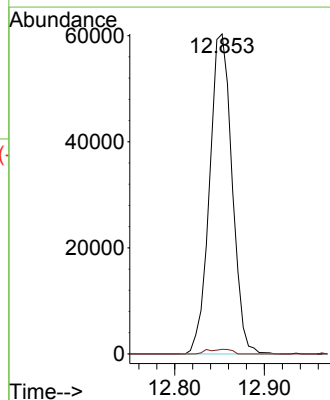
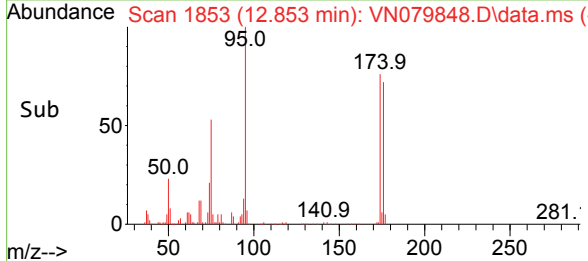
Tgt Ion: 152 Resp: 185407
 Ion Ratio Lower Upper
 152 100
 115 62.1 32.3 96.8
 150 160.9 0.0 355.8

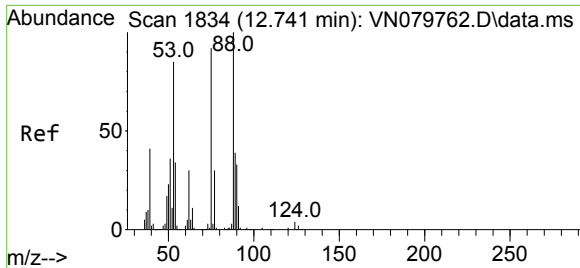


#76
 1,2,3-Trichloropropane
 Concen: 24.139 ug/l
 RT: 12.853 min Scan# 1853
 Delta R.T. -0.141 min
 Lab File: VN079848.D
 Acq: 03 Nov 2023 14:52



Tgt Ion: 75 Resp: 105072
 Ion Ratio Lower Upper
 75 100
 77 1.6 84.5 253.5#





#81
 trans-1,4-Dichloro-2-butene
 Concen: 65.676 ug/l
 RT: 12.853 min Scan# 11
 Delta R.T. 0.118 min
 Lab File: VN079848.D
 Acq: 03 Nov 2023 14:52

Instrument :
 MSVOA_N
 ClientSampleId :
 BP-VPB-188-GW-340-342

Tgt Ion: 75 Resp: 105072
 Ion Ratio Lower Upper
 75 100
 53 0.1 67.4 101.2#
 89 0.0 38.8 58.2#

