

Data Path : Z:\voasrv\HPCHEM1\MSVOA_N\Data\VN110323\
 Data File : VN079874.D
 Acq On : 04 Nov 2023 03:57
 Operator : JC\MD
 Sample : 05223-05
 Misc : 5.0mL/MSVOA_N/WATER
 ALS Vial : 44 Sample Multiplier: 1

Instrument :
 MSVOA_N
 ClientSampleId :
 FSND-MW-25-20231031

Quant Time: Nov 04 04:48:44 2023
 Quant Method : Z:\voasrv\HPCHEM1\MSVOA_N\methods\82N110123W.M
 Quant Title : SW846 8260
 QLast Update : Thu Nov 02 05:49:08 2023
 Response via : Initial Calibration

Compound	R.T.	QIon	Response	Conc	Units	Dev(Min)

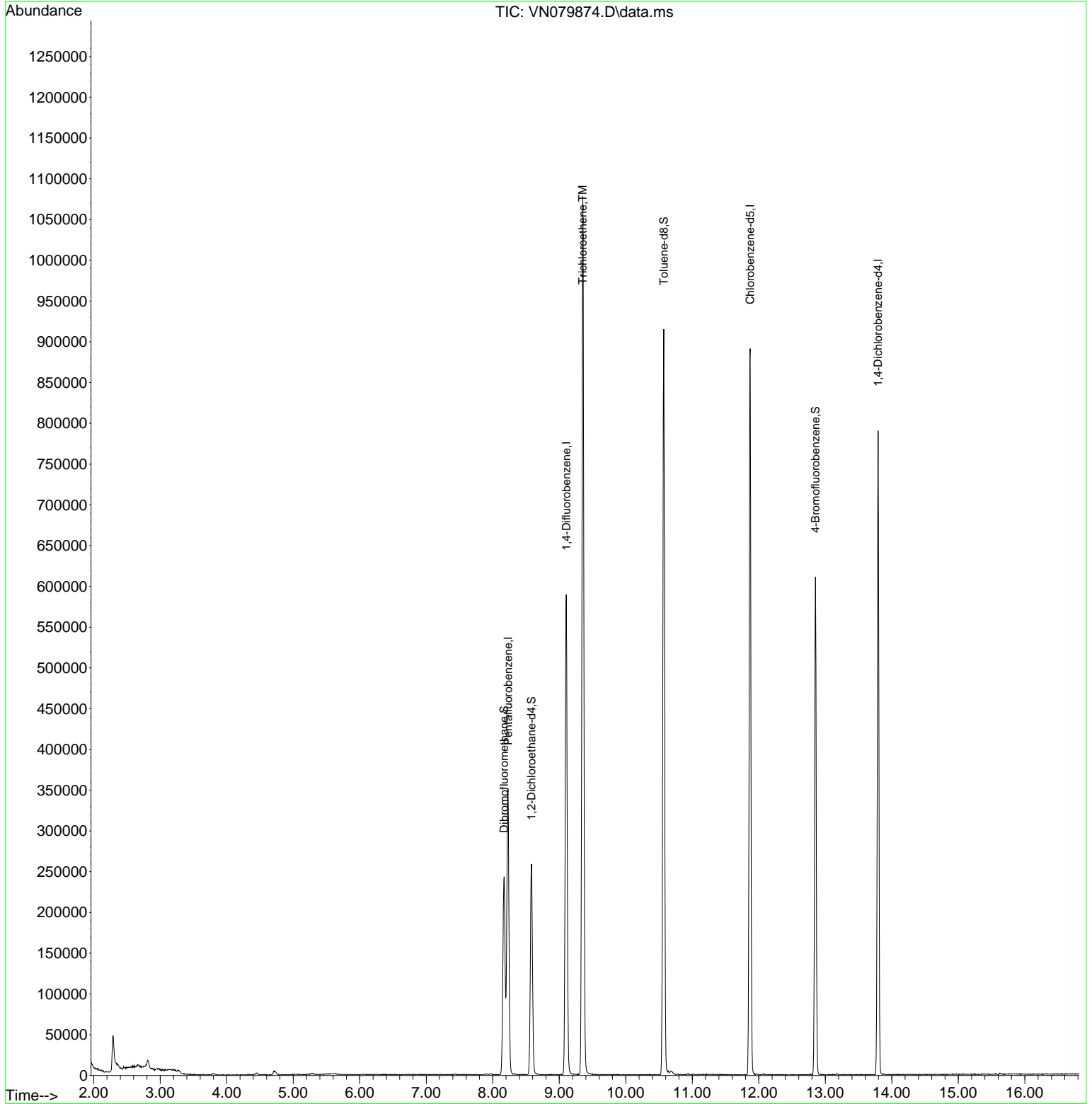
Internal Standards						
1) Pentafluorobenzene	8.230	168	242852	50.000	ug/l	0.00
34) 1,4-Difluorobenzene	9.106	114	490006	50.000	ug/l	0.00
63) Chlorobenzene-d5	11.871	117	502428	50.000	ug/l	0.00
72) 1,4-Dichlorobenzene-d4	13.794	152	197823	50.000	ug/l	0.00
System Monitoring Compounds						
33) 1,2-Dichloroethane-d4	8.583	65	208661	56.396	ug/l	0.00
Spiked Amount	50.000	Range	74 - 125	Recovery	=	112.800%
35) Dibromofluoromethane	8.171	113	175576	50.627	ug/l	0.00
Spiked Amount	50.000	Range	75 - 124	Recovery	=	101.260%
50) Toluene-d8	10.571	98	609846	47.767	ug/l	0.00
Spiked Amount	50.000	Range	86 - 113	Recovery	=	95.540%
62) 4-Bromofluorobenzene	12.853	95	201865	47.674	ug/l	0.00
Spiked Amount	50.000	Range	83 - 123	Recovery	=	95.340%
Target Compounds						
44) Trichloroethene	9.353	130	374466	101.748	ug/l	99

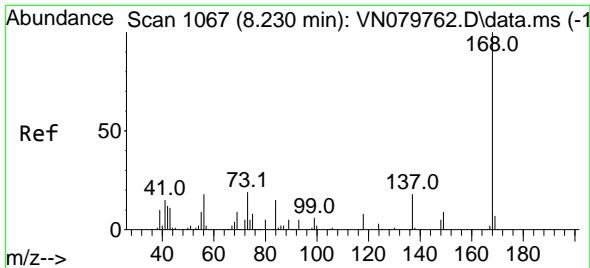
(#) = qualifier out of range (m) = manual integration (+) = signals summed

Data Path : Z:\voasrv\HPCHEM1\MSVOA_N\Data\VN110323\
 Data File : VN079874.D
 Acq On : 04 Nov 2023 03:57
 Operator : JC\MD
 Sample : 05223-05
 Misc : 5.0mL/MSVOA_N/WATER
 ALS Vial : 44 Sample Multiplier: 1

Instrument :
 MSVOA_N
 ClientSampleId :
 FSND-MW-25-20231031

Quant Time: Nov 04 04:48:44 2023
 Quant Method : Z:\voasrv\HPCHEM1\MSVOA_N\methods\82N110123W.M
 Quant Title : SW846 8260
 QLast Update : Thu Nov 02 05:49:08 2023
 Response via : Initial Calibration

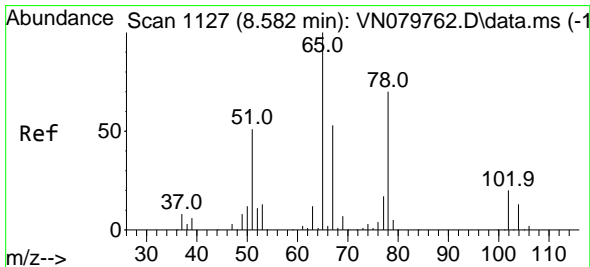
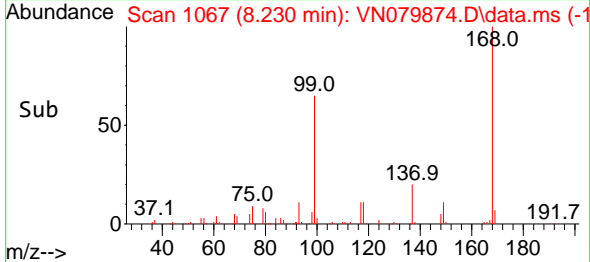
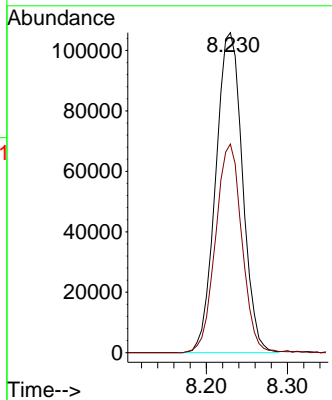
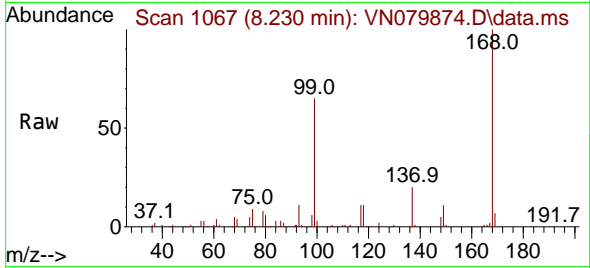




#1
 Pentafluorobenzene
 Concen: 50.000 ug/l
 RT: 8.230 min Scan# 1067
 Delta R.T. 0.001 min
 Lab File: VN079874.D
 Acq: 04 Nov 2023 03:57

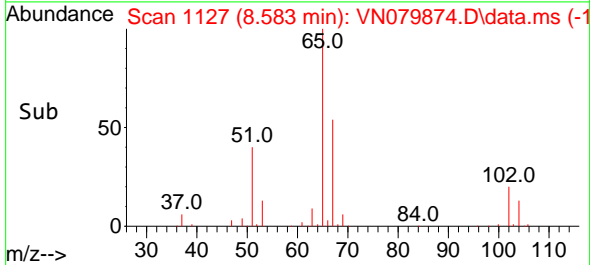
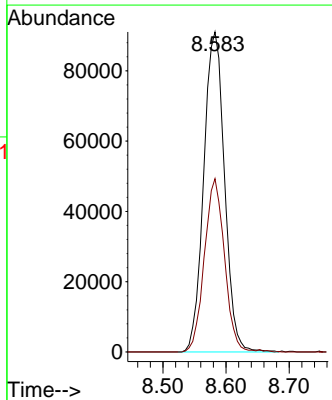
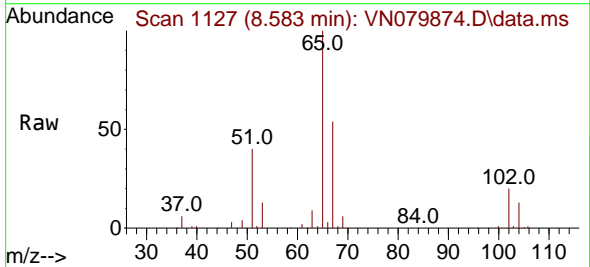
Instrument : MSVOA_N
 ClientSampleId : FSND-MW-25-20231031

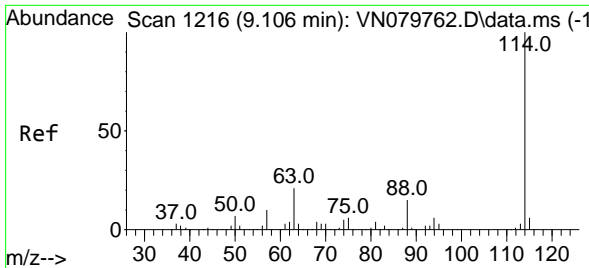
Tgt Ion:168 Resp: 242852
 Ion Ratio Lower Upper
 168 100
 99 65.2 53.0 79.6



#33
 1,2-Dichloroethane-d4
 Concen: 56.396 ug/l
 RT: 8.583 min Scan# 1127
 Delta R.T. 0.000 min
 Lab File: VN079874.D
 Acq: 04 Nov 2023 03:57

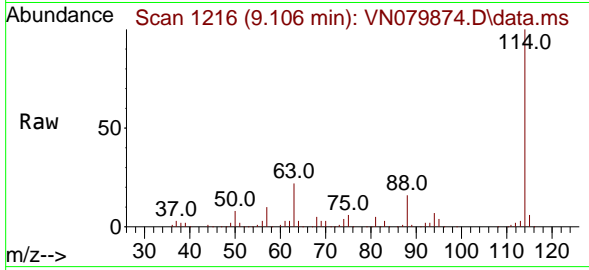
Tgt Ion: 65 Resp: 208661
 Ion Ratio Lower Upper
 65 100
 67 52.2 0.0 106.6





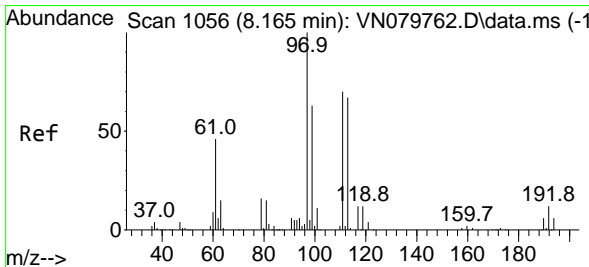
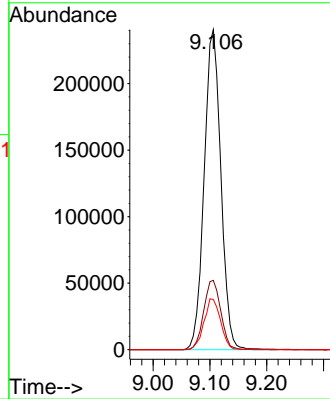
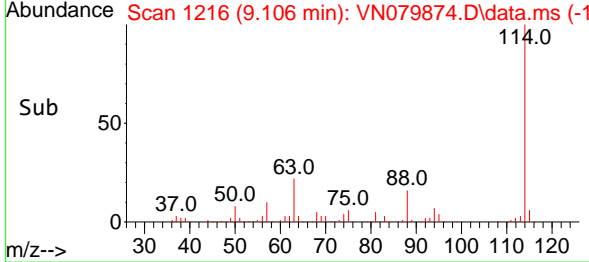
#34
 1,4-Difluorobenzene
 Concen: 50.000 ug/l
 RT: 9.106 min Scan# 11
 Delta R.T. 0.000 min
 Lab File: VN079874.D
 Acq: 04 Nov 2023 03:57

Instrument : MSVOA_N
 ClientSampleId : FSND-MW-25-20231031

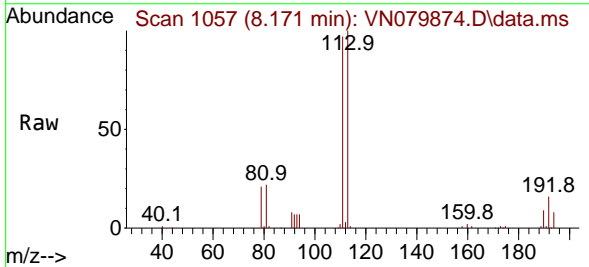


Tgt Ion:114 Resp: 490006

Ion	Ratio	Lower	Upper
114	100		
63	21.6	0.0	36.4
88	15.7	0.0	30.6

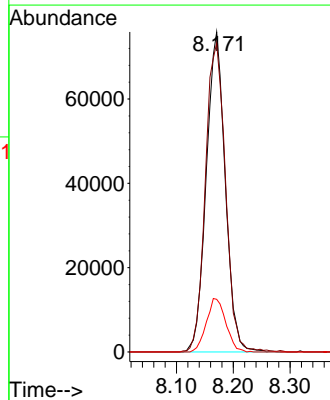
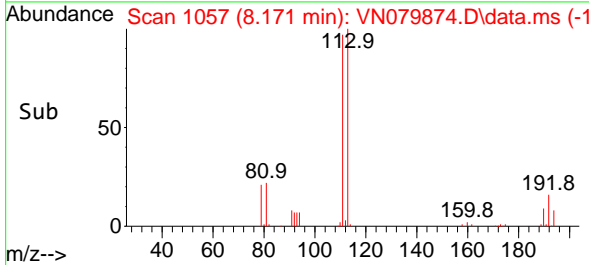


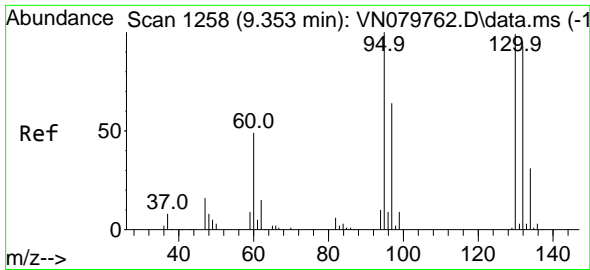
#35
 Dibromofluoromethane
 Concen: 50.627 ug/l
 RT: 8.171 min Scan# 1057
 Delta R.T. 0.000 min
 Lab File: VN079874.D
 Acq: 04 Nov 2023 03:57



Tgt Ion:113 Resp: 175576

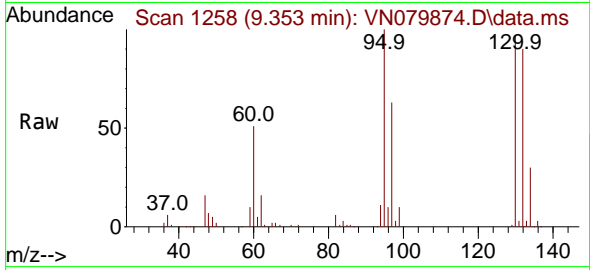
Ion	Ratio	Lower	Upper
113	100		
111	102.1	82.6	123.8
192	17.1	12.7	19.1



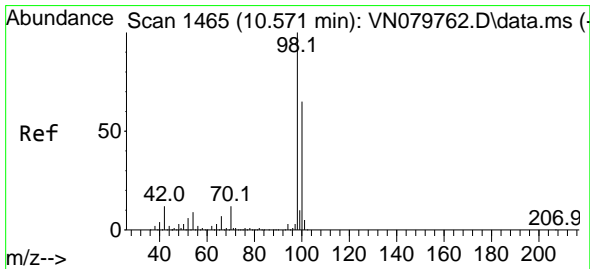
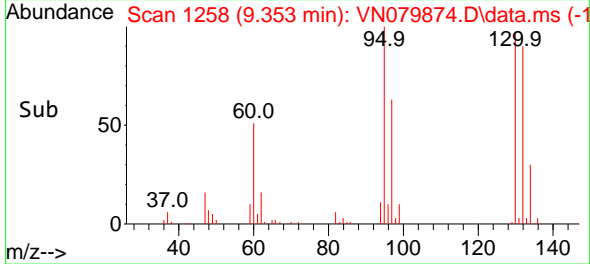
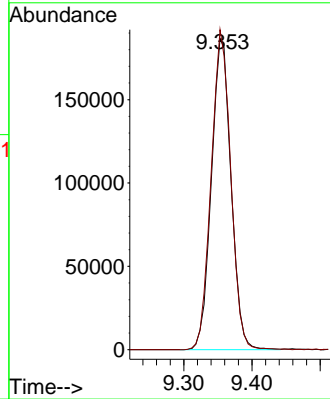


#44
 Trichloroethene
 Concen: 101.748 ug/l
 RT: 9.353 min Scan# 11
 Delta R.T. 0.000 min
 Lab File: VN079874.D
 Acq: 04 Nov 2023 03:57

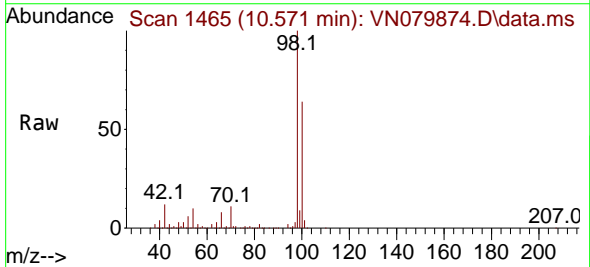
Instrument :
 MSVOA_N
 ClientSampleId :
 FSND-MW-25-20231031



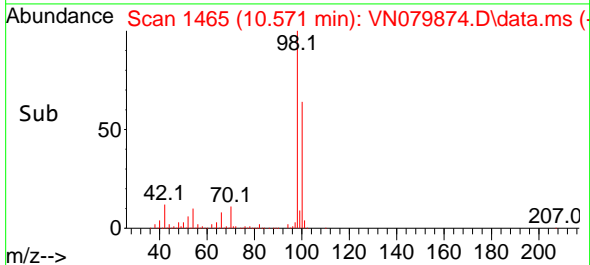
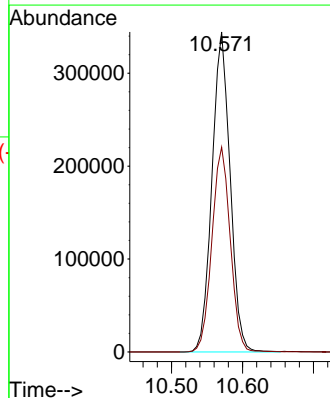
Tgt Ion:130 Resp: 374466
 Ion Ratio Lower Upper
 130 100
 95 102.8 0.0 204.6

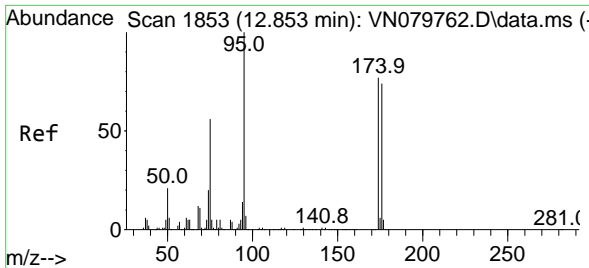


#50
 Toluene-d8
 Concen: 47.767 ug/l
 RT: 10.571 min Scan# 1465
 Delta R.T. 0.000 min
 Lab File: VN079874.D
 Acq: 04 Nov 2023 03:57



Tgt Ion: 98 Resp: 609846
 Ion Ratio Lower Upper
 98 100
 100 64.8 52.0 78.0

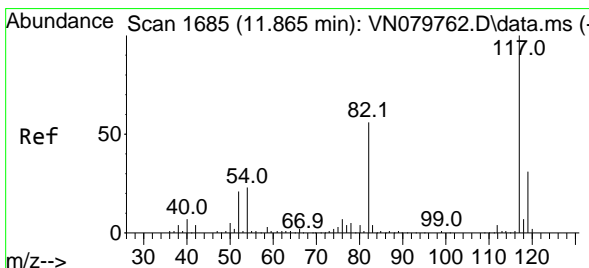
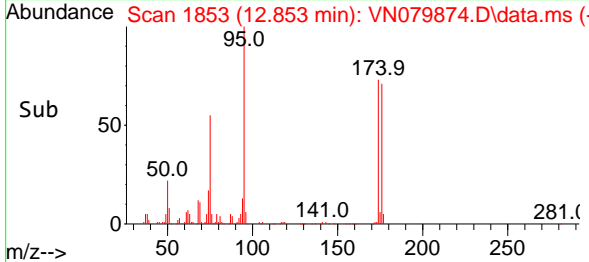
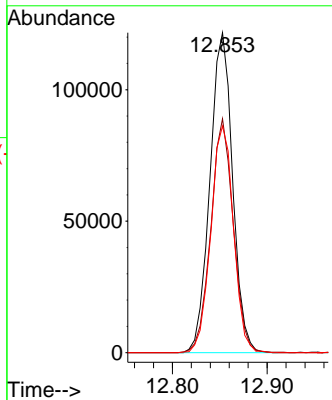
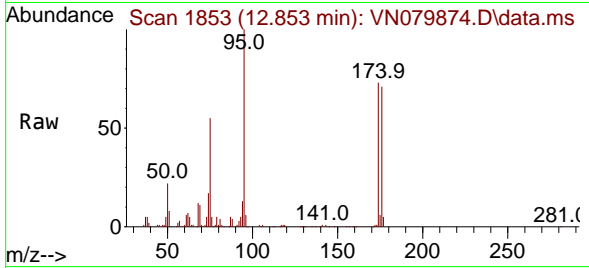




#62
 4-Bromofluorobenzene
 Concen: 47.674 ug/l
 RT: 12.853 min Scan# 1853
 Delta R.T. 0.000 min
 Lab File: VN079874.D
 Acq: 04 Nov 2023 03:57

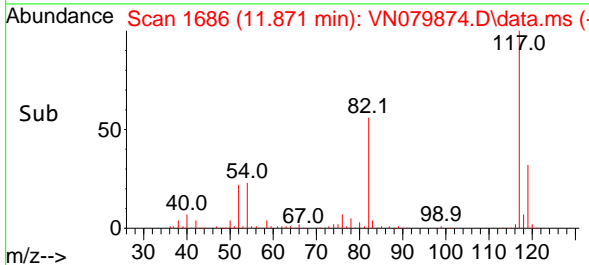
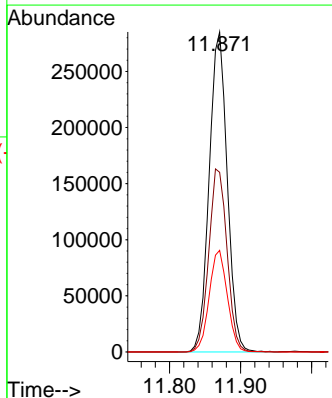
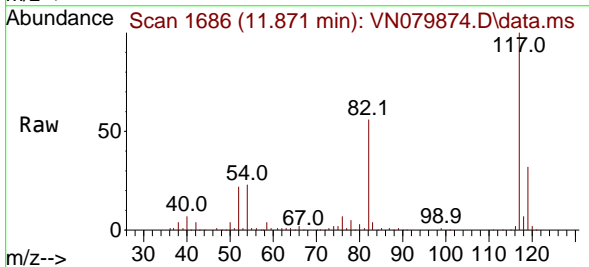
Instrument : MSVOA_N
 ClientSampleId : FSND-MW-25-20231031

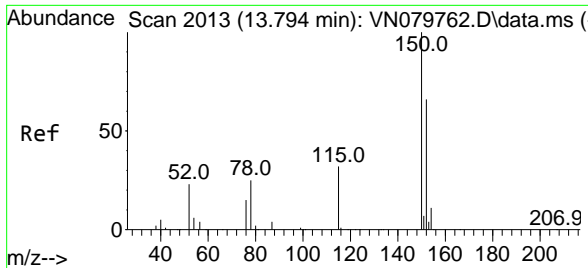
Tgt Ion: 95 Resp: 201865
 Ion Ratio Lower Upper
 95 100
 174 72.6 0.0 143.8
 176 70.7 0.0 135.8



#63
 Chlorobenzene-d5
 Concen: 50.000 ug/l
 RT: 11.871 min Scan# 1686
 Delta R.T. 0.000 min
 Lab File: VN079874.D
 Acq: 04 Nov 2023 03:57

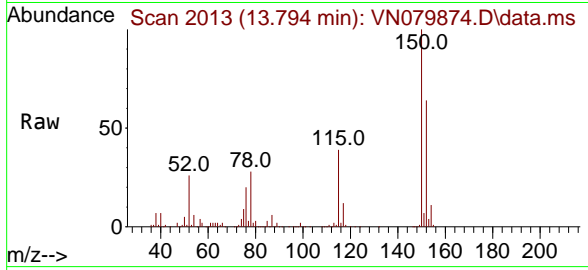
Tgt Ion: 117 Resp: 502428
 Ion Ratio Lower Upper
 117 100
 82 56.1 44.0 66.0
 119 31.8 25.6 38.4





#72
 1,4-Dichlorobenzene-d4
 Concen: 50.000 ug/l
 RT: 13.794 min Scan# 20
 Delta R.T. 0.000 min
 Lab File: VN079874.D
 Acq: 04 Nov 2023 03:57

Instrument : MSVOA_N
 ClientSampleId : FSND-MW-25-20231031



Tgt Ion:152 Resp: 197823

Ion	Ratio	Lower	Upper
152	100		
115	61.7	32.3	96.8
150	155.9	0.0	355.8

