

Data Path : Z:\VOASRV\HPCHEM1\MSVOA N\DATA\VN110520\
 Data File : VN064453.D
 Acq On : 5 Nov 2020 11:51
 Operator : JC/MD
 Sample : VN1105WBL01
 Misc : 5.00mL/MSVOA N/WATER
 ALS Vial : 4 Sample Multiplier: 1

Instrument :
 MSVOA_N
 ClientSampleId :
 VN1105WBL01

Integration Parameters: RTEINT.P
 Integrator: RTE
 Smoothing : ON Filtering: 5
 Sampling : 1 Min Area: 3 % of largest Peak
 Start Thrs: 0.2 Max Peaks: 100
 Stop Thrs : 0 Peak Location: TOP

If leading or trailing edge < 100 prefer < Baseline drop else tangent >
 Peak separation: 5

Method : Z:\VOASRV\HPCHEM1\MSVOA_N\METHODS\82N110420W.M
 Title : SW846 8260

Signal : TIC

peak #	R.T. min	first scan	max scan	last scan	PK TY	peak height	corr. area	corr. % max.	% of total
1	6.788	1553	1570	1587	rBV2	11683	34749	1.94%	0.372%
2	7.550	1788	1807	1818	rBV2	230706	571444	31.97%	6.120%
3	7.624	1819	1830	1849	rVB	348621	825595	46.18%	8.842%
4	7.987	1926	1943	1968	rBV2	269231	628586	35.16%	6.732%
5	8.550	2103	2118	2142	rVB	614038	1269617	71.02%	13.598%
6	10.061	2569	2588	2609	rBV	969577	1787608	100.00%	19.146%
7	11.380	2983	2998	3026	rBV	954712	1694153	94.77%	18.145%
8	12.376	3295	3308	3331	rBV	702053	1215967	68.02%	13.023%
9	13.318	3585	3601	3620	rBV	767721	1309105	73.23%	14.021%

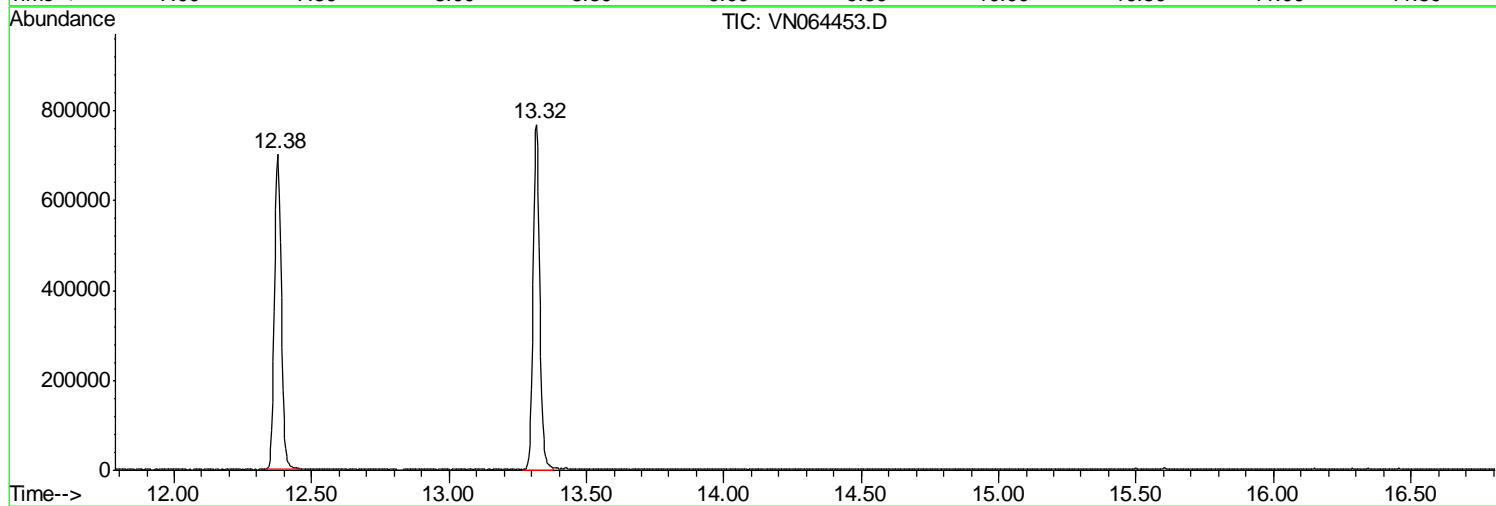
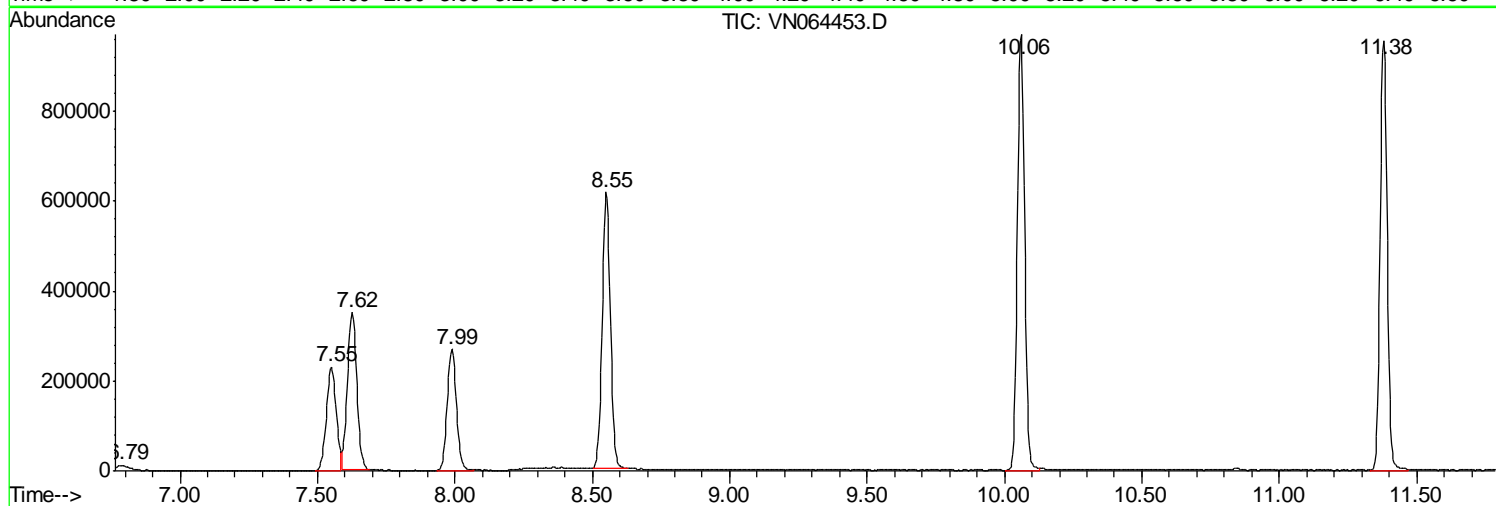
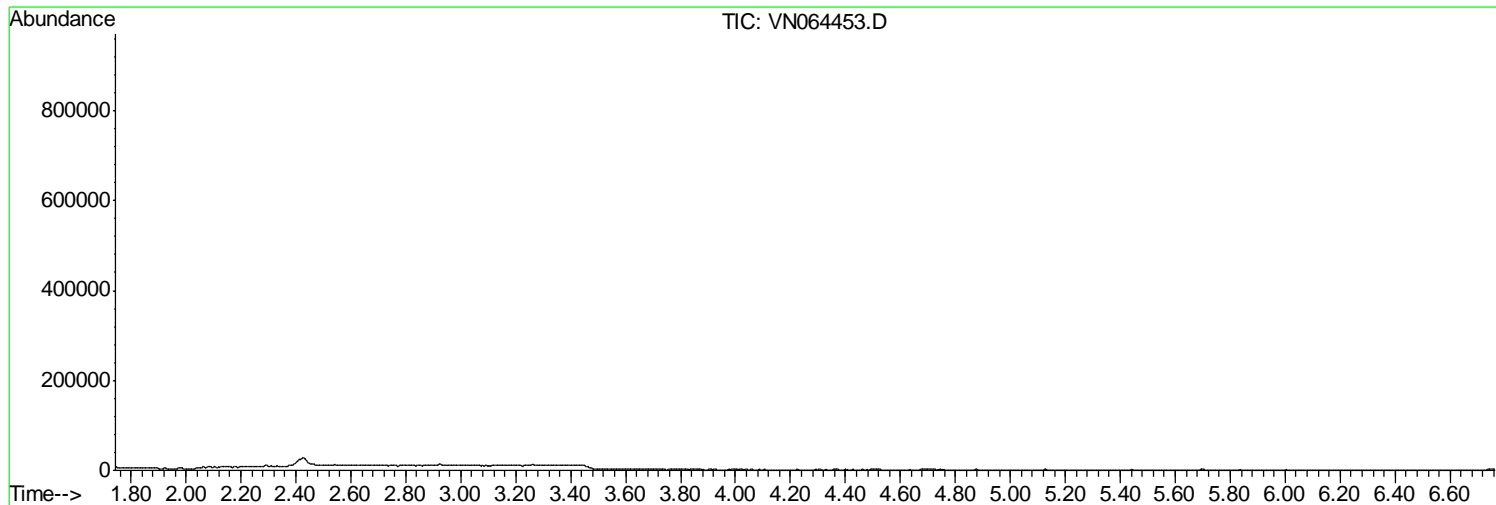
Sum of corrected areas: 9336824

Data Path : Z:\VOASRV\HPCHEM1\MSVOA N\DATA\VN110520\
Data File : VN064453.D
Acq On : 5 Nov 2020 11:51
Operator : JC/MD
Sample : VN1105WBL01
Misc : 5.00mL/MSVOA N/WATER
ALS Vial : 4 Sample Multiplier: 1

Instrument :
MSVOA_N
ClientSampleId :
VN1105WBL01

Quant Method : Z:\VOASRV\HPCHEM1\MSVOA_N\METHODS\82N110420W.M
Quant Title : SW846 8260

TIC Library : C:\DATABASE\NIST11.L
TIC Integration Parameters: LSCINT.P



Data Path : Z:\VOASRV\HPCHEM1\MSVOA_N\DATA\VN110520\
Data File : VN064453.D
Acq On : 5 Nov 2020 11:51
Operator : JC/MD
Sample : VN1105WBL01
Misc : 5.00mL/MSVOA_N/WATER
ALS Vial : 4 Sample Multiplier: 1

Instrument :
MSVOA_N
ClientSampleId :
VN1105WBL01

Quant Method : Z:\VOASRV\HPCHEM1\MSVOA_N\METHODS\82N110420W.M
Quant Title : SW846 8260

TIC Library : C:\DATABASE\NIST11.L
TIC Integration Parameters: LSCINT.P

No Library Search Compounds Detected

Data Path : Z:\VOASRV\HPCHEM1\MSVOA_N\DATA\VN110520\
Data File : VN064453.D
Acq On : 5 Nov 2020 11:51
Operator : JC/MD
Sample : VN1105WBL01
Misc : 5.00mL/MSVOA_N/WATER
ALS Vial : 4 Sample Multiplier: 1

Instrument :
MSVOA_N
ClientSampleId :
VN1105WBL01

Quant Method : Z:\VOASRV\HPCHEM1\MSVOA_N\METHODS\82N110420W.M
Quant Title : SW846 8260

TIC Library : C:\DATABASE\NIST11.L
TIC Integration Parameters: LSCINT.P

TIC Top Hit name	RT	EstConc	Units	Response	--Internal Standard--			
					#	RT	Resp	Conc
