

Data Path : Z:\voasrv\HPCHEM1\MSVOA_N\Data\VN110623\
 Data File : VN079955.D
 Acq On : 07 Nov 2023 08:53
 Operator : JC\MD
 Sample : 05107-26
 Misc : 5.0mL/MSVOA_N/WATER
 ALS Vial : 49 Sample Multiplier: 1

Instrument :
 MSVOA_N
 ClientSampleId :

Quant Time: Nov 07 12:33:03 2023
 Quant Method : Z:\voasrv\HPCHEM1\MSVOA_N\methods\82N110123W.M
 Quant Title : SW846 8260
 QLast Update : Thu Nov 02 05:49:08 2023
 Response via : Initial Calibration

Compound	R.T.	QIon	Response	Conc	Units	Dev(Min)
Internal Standards						
1) Pentafluorobenzene	8.230	168	333754	50.000	ug/l	0.00
34) 1,4-Difluorobenzene	9.106	114	662163	50.000	ug/l	0.00
63) Chlorobenzene-d5	11.871	117	690660	50.000	ug/l	0.00
72) 1,4-Dichlorobenzene-d4	13.794	152	324596	50.000	ug/l	0.00
System Monitoring Compounds						
33) 1,2-Dichloroethane-d4	8.583	65	261130	51.354	ug/l	0.00
Spiked Amount	50.000	Range 74 - 125	Recovery	=	102.700%	
35) Dibromofluoromethane	8.171	113	213592	45.576	ug/l	0.00
Spiked Amount	50.000	Range 75 - 124	Recovery	=	91.160%	
50) Toluene-d8	10.571	98	808593	46.867	ug/l	0.00
Spiked Amount	50.000	Range 86 - 113	Recovery	=	93.740%	
62) 4-Bromofluorobenzene	12.853	95	328004	57.324	ug/l	0.00
Spiked Amount	50.000	Range 83 - 123	Recovery	=	114.640%	
Target Compounds						
						Qvalue
3) Chloromethane	2.359	50	1293	Below Cal	#	80
11) Tert butyl alcohol	5.512	59	2006	3.090	ug/l	99
13) Acrolein	4.189	56	2499	6.600	ug/l #	16
16) Acetone	4.430	43	165335	92.567	ug/l	95
18) Methyl Acetate	5.036	43	11708	1.370	ug/l #	79
20) Methylene Chloride	5.277	84	24169	5.363	ug/l #	80
25) 2-Butanone	7.489	43	39453	15.084	ug/l #	77
31) Cyclohexane	8.253	56	25282	3.763	ug/l #	73
36) 1,1-Dichloropropene	8.224	75	29767	4.448	ug/l #	47
37) Ethyl Acetate	7.577	43	8485	1.383	ug/l #	78
38) Carbon Tetrachloride	8.230	117	36898	5.471	ug/l #	15
39) Methylcyclohexane	9.606	83	8102	1.287	ug/l	97
40) Benzene	8.612	78	8448866	421.553	ug/l	100
42) 1,2-Dichloroethane	8.612	62	76566	10.937	ug/l	73
43) Isopropyl Acetate	8.694	43	332507	30.895	ug/l #	77
48) Methyl methacrylate	9.665	41	14493	3.074	ug/l #	32
49) 1,4-Dioxane	9.753	88	257	3.085	ug/l #	1
51) 4-Methyl-2-Pentanone	10.447	43	47483	7.837	ug/l #	85
52) Toluene	10.635	92	3843128	323.445	ug/l	99
53) t-1,3-Dichloropropene	10.735	75	1809	0.247	ug/l #	68
54) cis-1,3-Dichloropropene	10.365	75	80657	10.120	ug/l #	67
55) 1,1,2-Trichloroethane	10.888	97	31757	6.645	ug/l #	20
56) Ethyl methacrylate	10.894	69	2765	0.406	ug/l #	32
57) 1,3-Dichloropropane	11.206	76	10024	1.190	ug/l #	45
59) 2-Hexanone	11.176	43	207347	44.733	ug/l #	19
67) Ethyl Benzene	11.965	91	447072	17.128	ug/l	97
68) m/p-Xylenes	12.071	106	803211	82.606	ug/l	92
69) o-Xylene	12.400	106	555532	59.332	ug/l	91
70) Styrene	12.412	104	151316	10.056	ug/l #	42
71) Bromoform	12.853	173	2124	0.554	ug/l #	1
73) Isopropylbenzene	12.694	105	25114	1.019	ug/l	100
74) N-ethyl acetate	12.459	43	14020	1.304	ug/l #	43
76) 1,2,3-Trichloropropane	12.853	75	177673	23.315	ug/l #	1
78) n-propylbenzene	13.035	91	33840	1.200	ug/l	100
80) 1,3,5-Trimethylbenzene	13.176	105	137444	7.171	ug/l	100
81) trans-1,4-Dichloro-2-b...	12.853	75	177673	63.435	ug/l #	17

Data Path : Z:\voasrv\HPCHEM1\MSVOA_N\Data\VN110623\
 Data File : VN079955.D
 Acq On : 07 Nov 2023 08:53
 Operator : JC\MD
 Sample : 05107-26
 Misc : 5.0mL/MSVOA_N/WATER
 ALS Vial : 49 Sample Multiplier: 1

Instrument :
 MSVOA_N
 ClientSampleId :

Quant Time: Nov 07 12:33:03 2023
 Quant Method : Z:\voasrv\HPCHEM1\MSVOA_N\methods\82N110123W.M
 Quant Title : SW846 8260
 QLast Update : Thu Nov 02 05:49:08 2023
 Response via : Initial Calibration

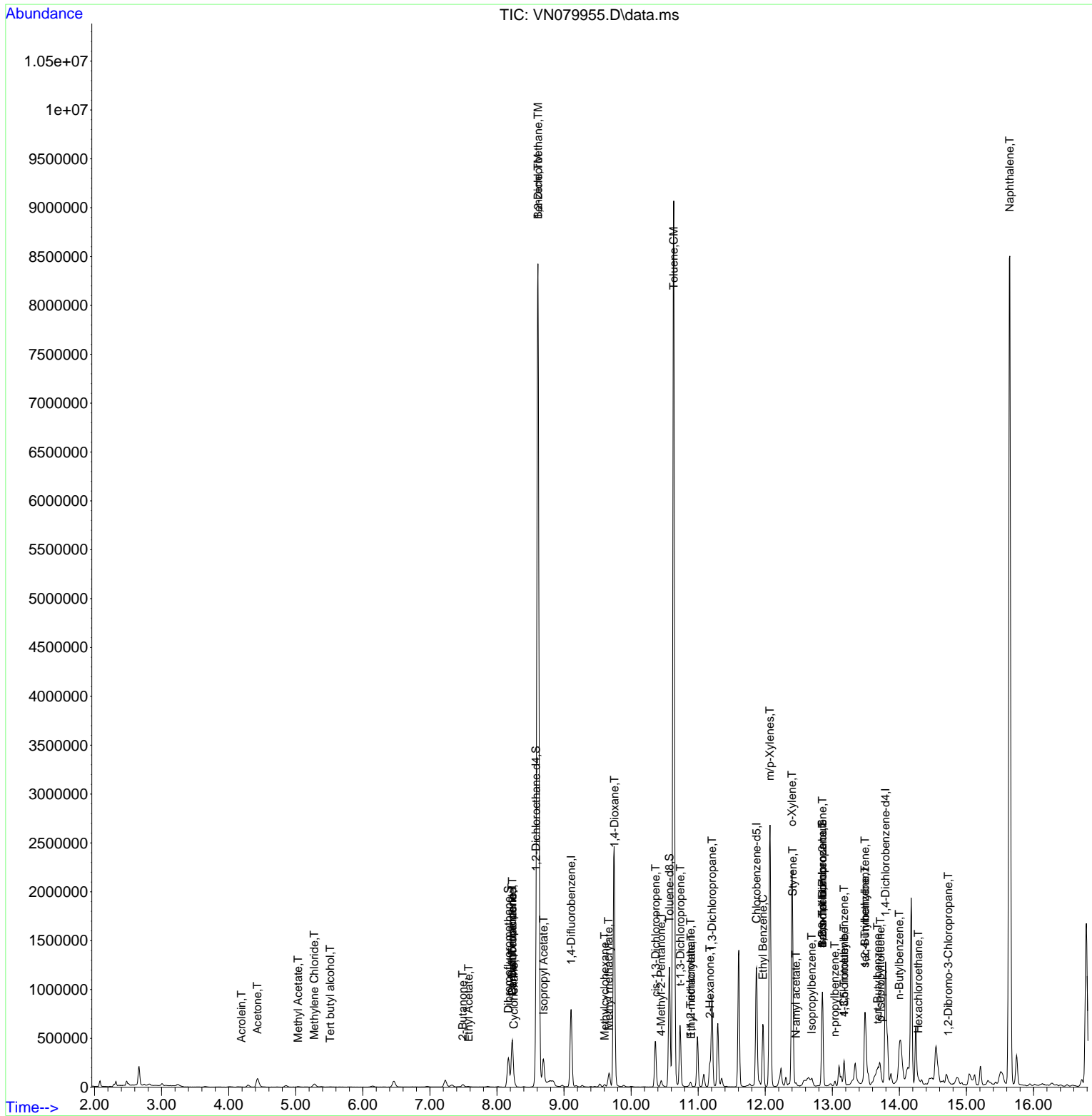
Compound	R.T.	QIon	Response	Conc	Units	Dev(Min)
82) 4-Chlorotoluene	13.176	91	15335	0.856	ug/l #	41
83) tert-Butylbenzene	13.676	119	9963	0.635	ug/l	83
84) 1,2,4-Trimethylbenzene	13.488	105	470654	24.959	ug/l	84
85) sec-Butylbenzene	13.488	105	470654	21.653	ug/l #	57
86) p-Isopropyltoluene	13.717	119	11767	0.664	ug/l #	72
89) n-Butylbenzene	14.000	91	25523	1.672	ug/l #	44
90) Hexachloroethane	14.282	117	5335	1.520	ug/l #	21
92) 1,2-Dibromo-3-Chloropr...	14.729	75	2337	1.578	ug/l #	4
95) Naphthalene	15.647	128	7671465	449.175	ug/l	99

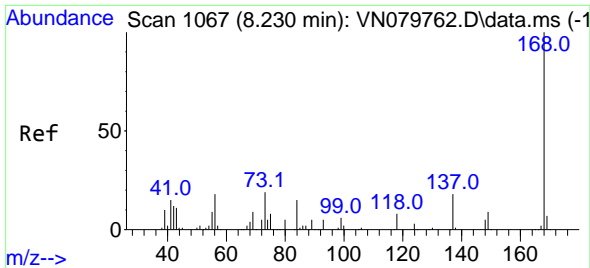
(#) = qualifier out of range (m) = manual integration (+) = signals summed

Data Path : Z:\voasrv\HPCHEM1\MSVOA_N\Data\VN110623\
 Data File : VN079955.D
 Acq On : 07 Nov 2023 08:53
 Operator : JC\MD
 Sample : 05107-26
 Misc : 5.0mL/MSVOA_N/WATER
 ALS Vial : 49 Sample Multiplier: 1

Instrument :
 MSVOA_N
 ClientSampleId :

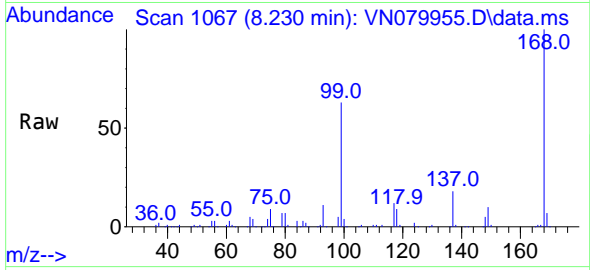
Quant Time: Nov 07 12:33:03 2023
 Quant Method : Z:\voasrv\HPCHEM1\MSVOA_N\methods\82N110123W.M
 Quant Title : SW846 8260
 QLast Update : Thu Nov 02 05:49:08 2023
 Response via : Initial Calibration



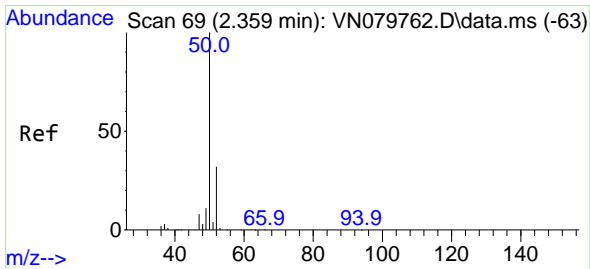
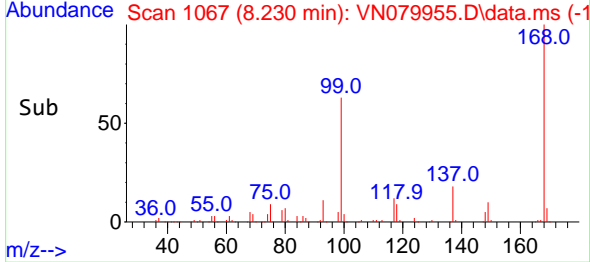
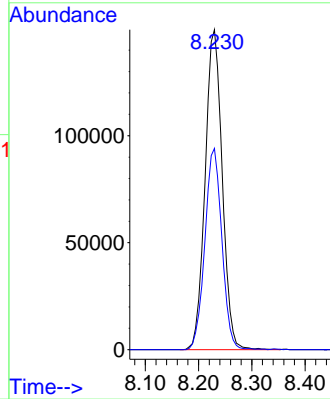


#1
 Pentafluorobenzene
 Concen: 50.000 ug/l
 RT: 8.230 min Scan# 10
 Delta R.T. 0.001 min
 Lab File: VN079955.D
 Acq: 07 Nov 2023 08:53

Instrument :
 MSVOA_N
 ClientSampleId :

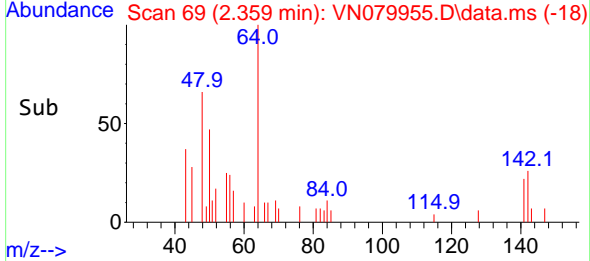
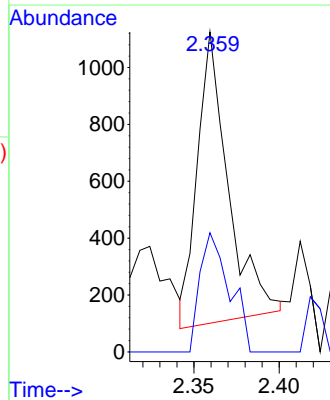
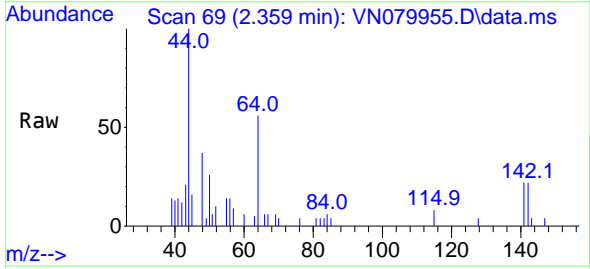


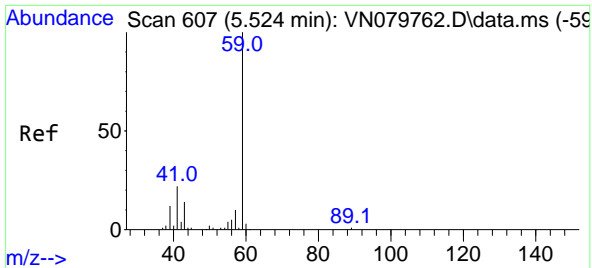
Tgt Ion:168 Resp: 333754
 Ion Ratio Lower Upper
 168 100
 99 62.9 53.0 79.6



#3
 Chloromethane
 Concen: Below Cal
 RT: 2.359 min Scan# 69
 Delta R.T. 0.000 min
 Lab File: VN079955.D
 Acq: 07 Nov 2023 08:53

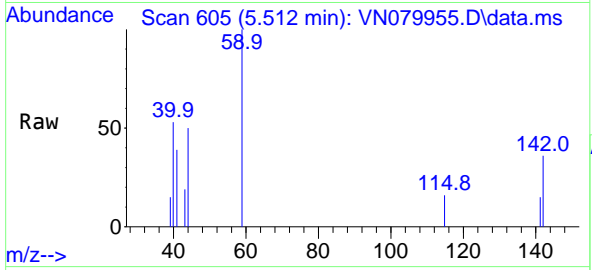
Tgt Ion: 50 Resp: 1293
 Ion Ratio Lower Upper
 50 100
 52 44.2 26.5 39.7#



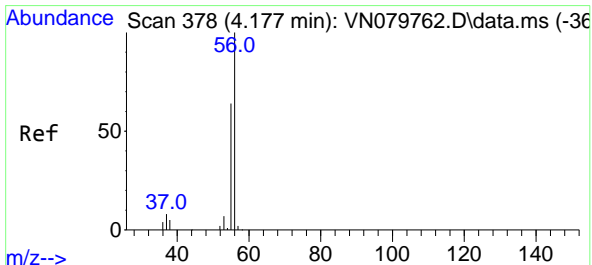
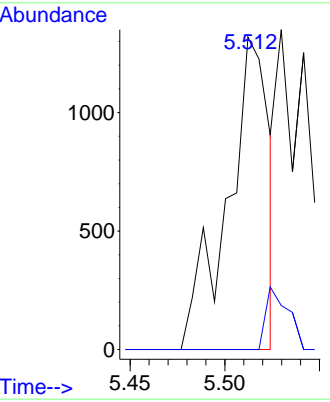
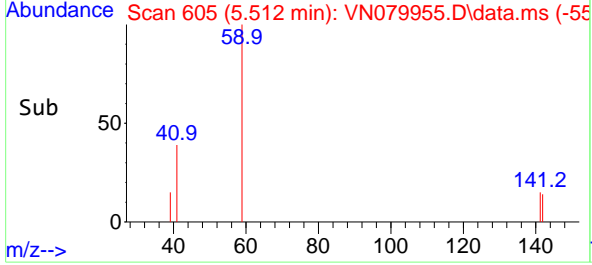


#11
 Tert butyl alcohol
 Concen: 3.090 ug/l
 RT: 5.512 min Scan# 607
 Delta R.T. -0.006 min
 Lab File: VN079955.D
 Acq: 07 Nov 2023 08:53

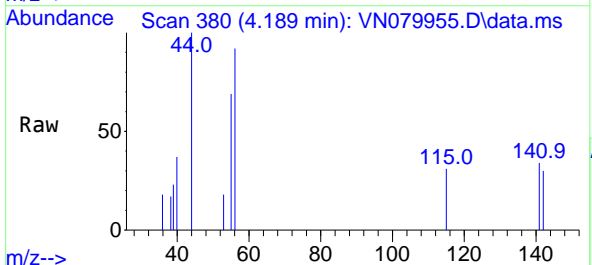
Instrument : MSVOA_N
 ClientSampleId :



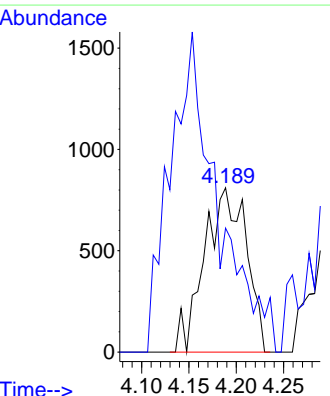
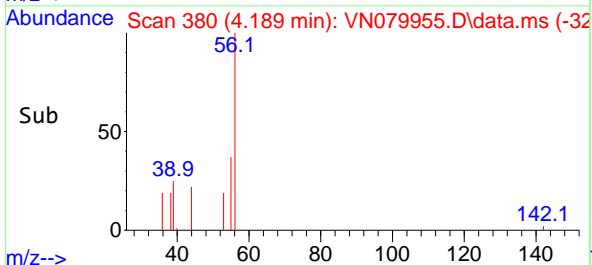
Tgt Ion: 59 Resp: 2006
 Ion Ratio Lower Upper
 59 100
 57 10.7 8.2 12.4

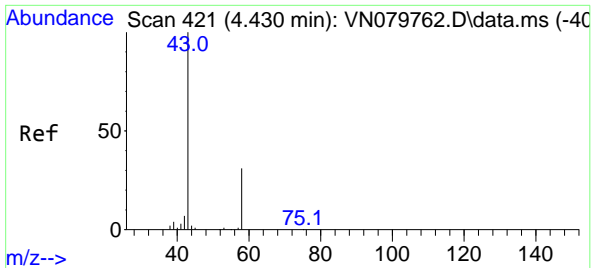


#13
 Acrolein
 Concen: 6.600 ug/l
 RT: 4.189 min Scan# 380
 Delta R.T. 0.006 min
 Lab File: VN079955.D
 Acq: 07 Nov 2023 08:53



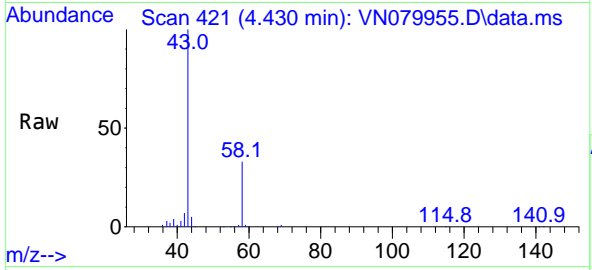
Tgt Ion: 56 Resp: 2499
 Ion Ratio Lower Upper
 56 100
 55 0.0 54.5 81.7#



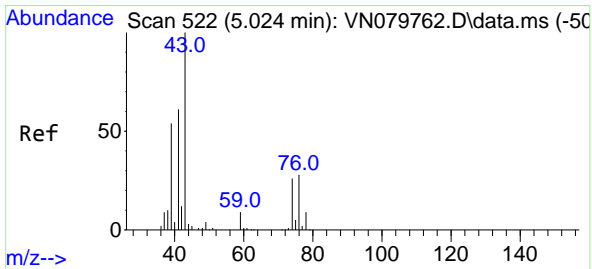
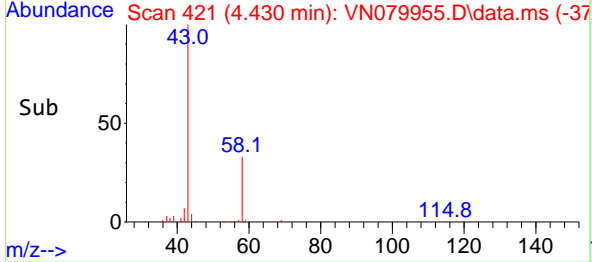
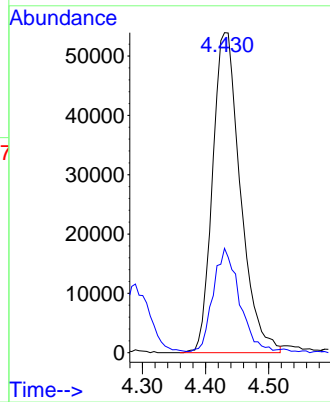


#16
 Acetone
 Concen: 92.567 ug/l
 RT: 4.430 min Scan# 41
 Delta R.T. 0.000 min
 Lab File: VN079955.D
 Acq: 07 Nov 2023 08:53

Instrument : MSVOA_N
 ClientSampleId :

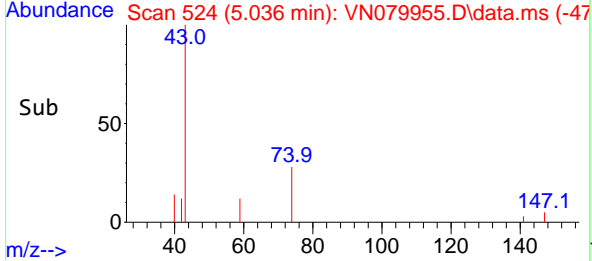
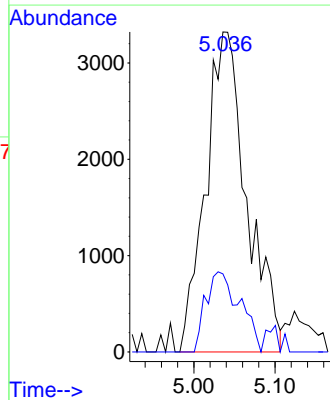
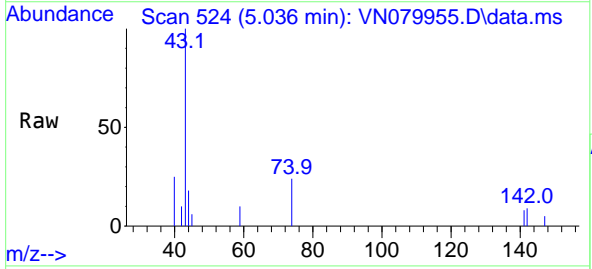


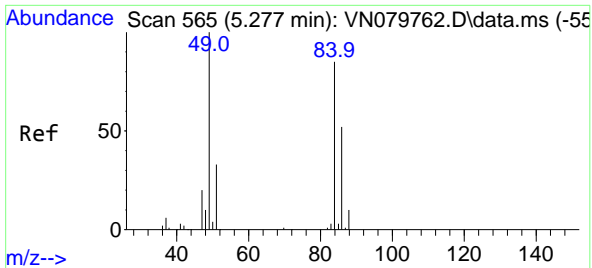
Tgt Ion: 43 Resp: 165335
 Ion Ratio Lower Upper
 43 100
 58 31.9 28.0 42.0



#18
 Methyl Acetate
 Concen: 1.370 ug/l
 RT: 5.036 min Scan# 524
 Delta R.T. 0.012 min
 Lab File: VN079955.D
 Acq: 07 Nov 2023 08:53

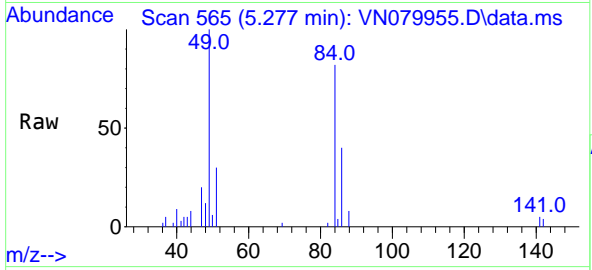
Tgt Ion: 43 Resp: 11708
 Ion Ratio Lower Upper
 43 100
 74 20.8 26.2 39.4#





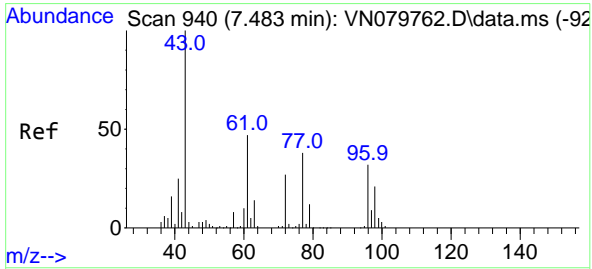
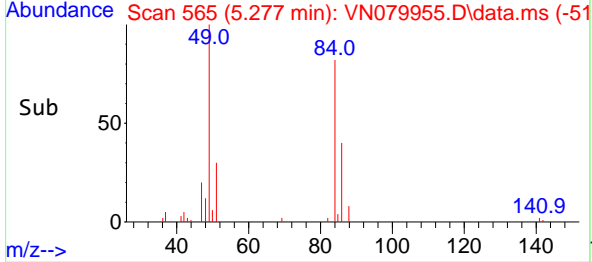
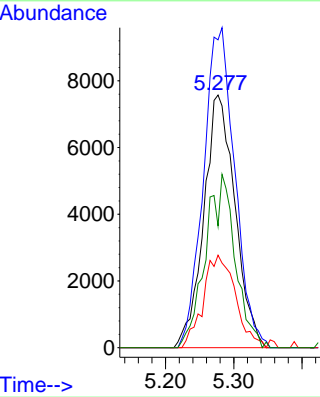
#20
 Methylene Chloride
 Concen: 5.363 ug/l
 RT: 5.277 min Scan# 50
 Delta R.T. 0.006 min
 Lab File: VN079955.D
 Acq: 07 Nov 2023 08:53

Instrument : MSVOA_N
 ClientSampleId :

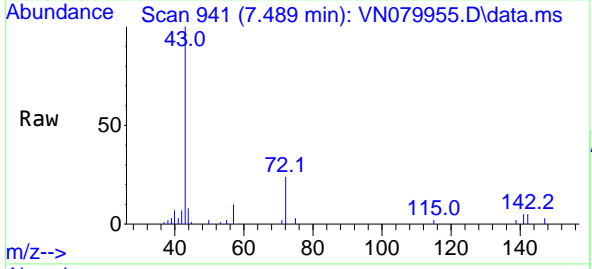


Tgt Ion: 84 Resp: 24169

Ion	Ratio	Lower	Upper
84	100		
49	121.8	79.7	119.5#
51	36.6	25.2	37.8
86	48.2	53.3	79.9#

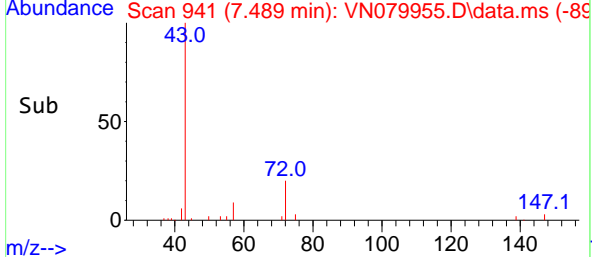
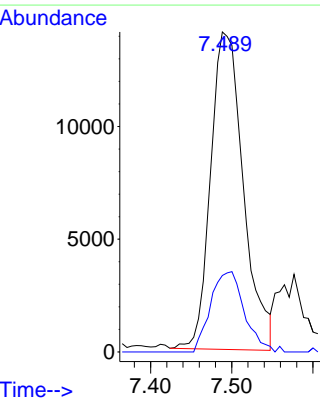


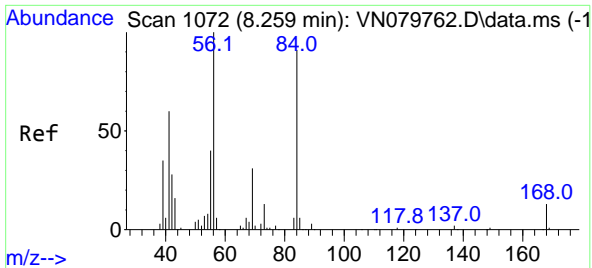
#25
 2-Butanone
 Concen: 15.084 ug/l
 RT: 7.489 min Scan# 941
 Delta R.T. 0.000 min
 Lab File: VN079955.D
 Acq: 07 Nov 2023 08:53



Tgt Ion: 43 Resp: 39453

Ion	Ratio	Lower	Upper
43	100		
72	24.2	30.2	45.2#



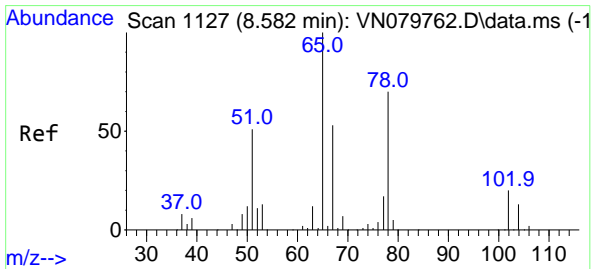
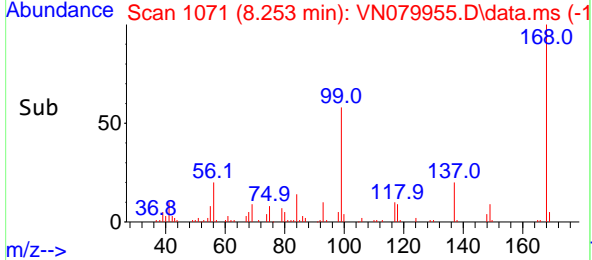
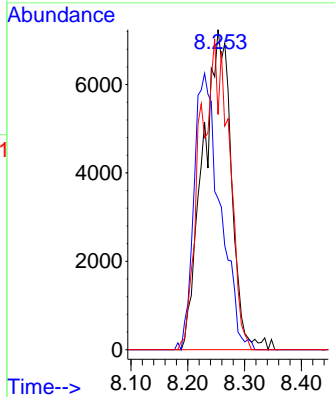
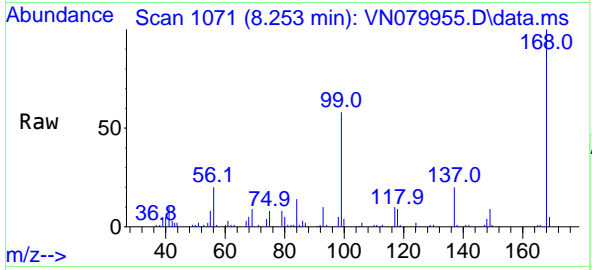


#31
 Cyclohexane
 Concen: 3.763 ug/l
 RT: 8.253 min Scan# 1071
 Delta R.T. -0.006 min
 Lab File: VN079955.D
 Acq: 07 Nov 2023 08:53

Instrument : MSVOA_N
 ClientSampleId :

Tgt Ion: 56 Resp: 25282

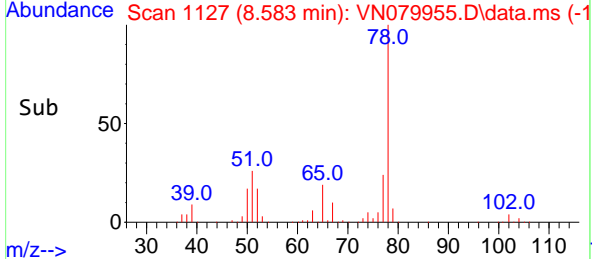
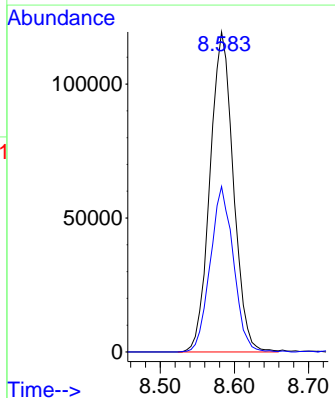
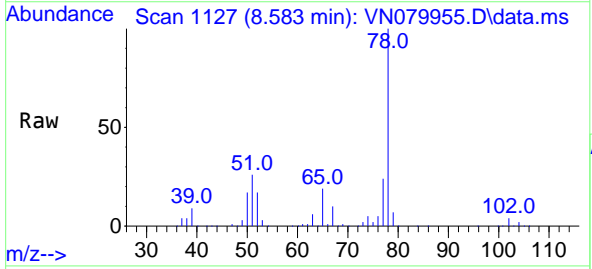
Ion	Ratio	Lower	Upper
56	100		
69	47.2	26.8	40.2#
84	73.5	81.8	122.6#

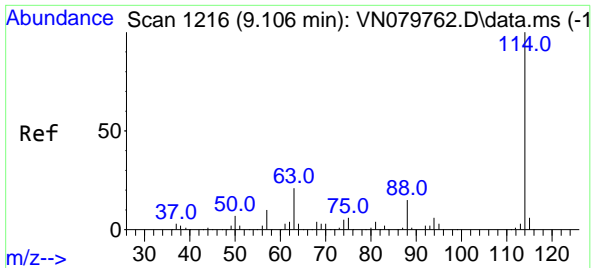


#33
 1,2-Dichloroethane-d4
 Concen: 51.354 ug/l
 RT: 8.583 min Scan# 1127
 Delta R.T. 0.000 min
 Lab File: VN079955.D
 Acq: 07 Nov 2023 08:53

Tgt Ion: 65 Resp: 261130

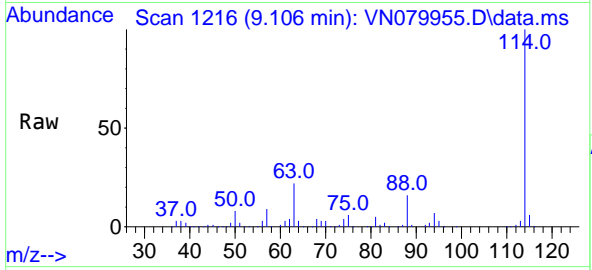
Ion	Ratio	Lower	Upper
65	100		
67	51.4	0.0	106.6



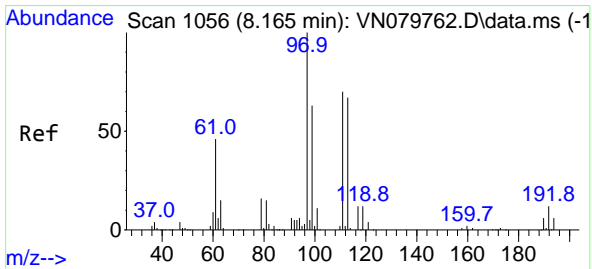
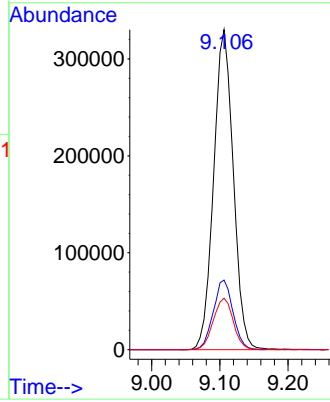
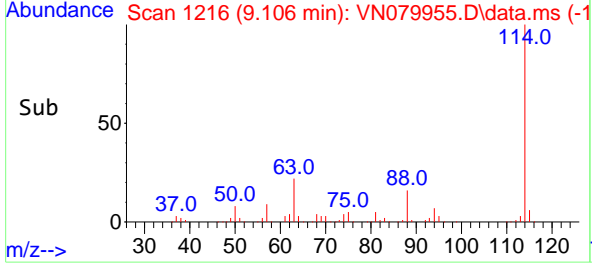


#34
 1,4-Difluorobenzene
 Concen: 50.000 ug/l
 RT: 9.106 min Scan# 11
 Delta R.T. 0.000 min
 Lab File: VN079955.D
 Acq: 07 Nov 2023 08:53

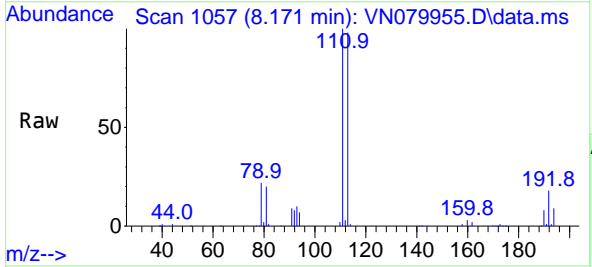
Instrument :
 MSVOA_N
 ClientSampleId :



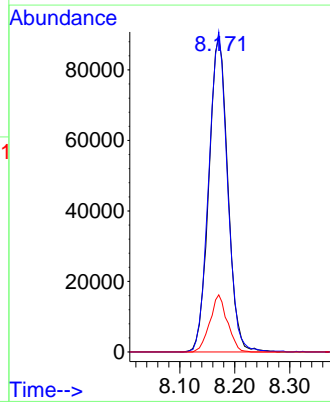
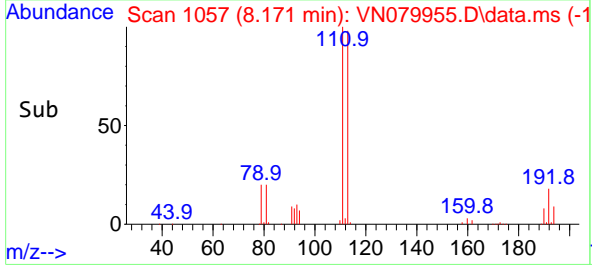
Tgt Ion:114 Resp: 662163
 Ion Ratio Lower Upper
 114 100
 63 21.8 0.0 36.4
 88 16.1 0.0 30.6

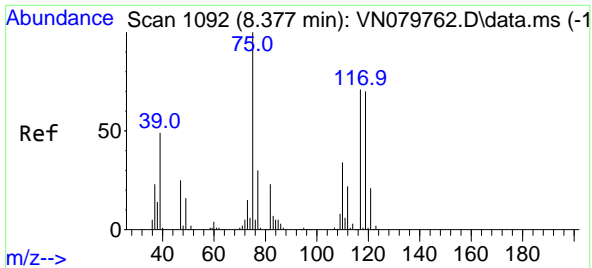


#35
 Dibromofluoromethane
 Concen: 45.576 ug/l
 RT: 8.171 min Scan# 1057
 Delta R.T. 0.000 min
 Lab File: VN079955.D
 Acq: 07 Nov 2023 08:53



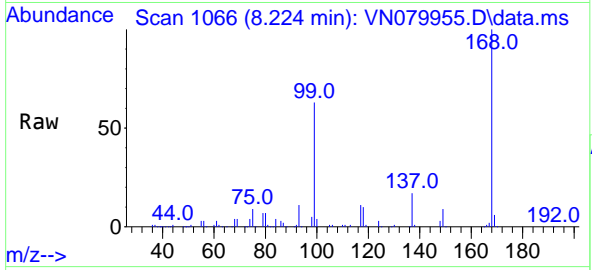
Tgt Ion:113 Resp: 213592
 Ion Ratio Lower Upper
 113 100
 111 100.1 82.6 123.8
 192 16.7 12.7 19.1



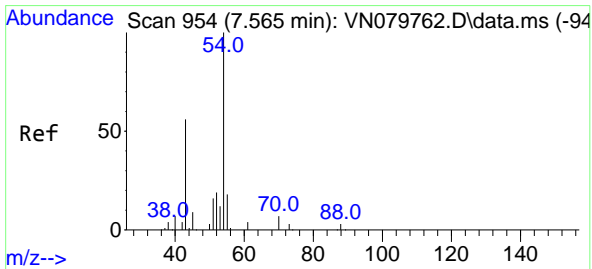
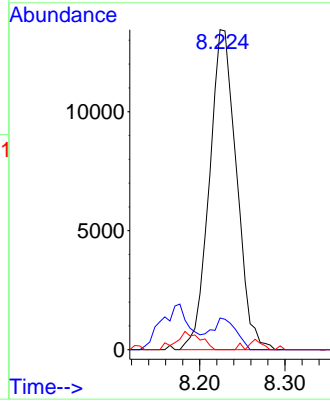
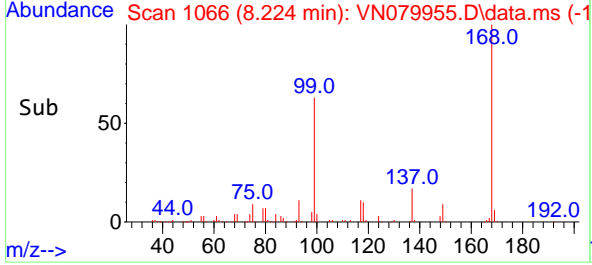


#36
 1,1-Dichloropropene
 Concen: 4.448 ug/l
 RT: 8.224 min Scan# 1092
 Delta R.T. -0.153 min
 Lab File: VN079955.D
 Acq: 07 Nov 2023 08:53

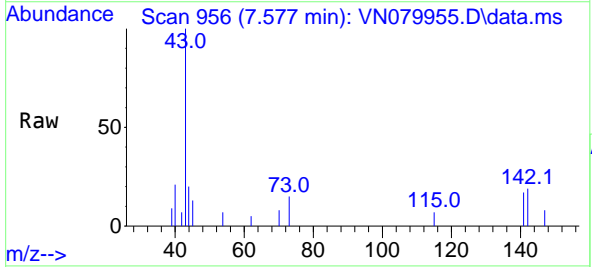
Instrument : MSVOA_N
 ClientSampleId :



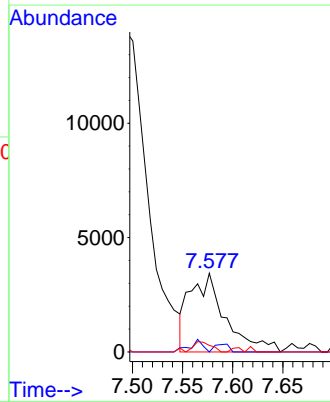
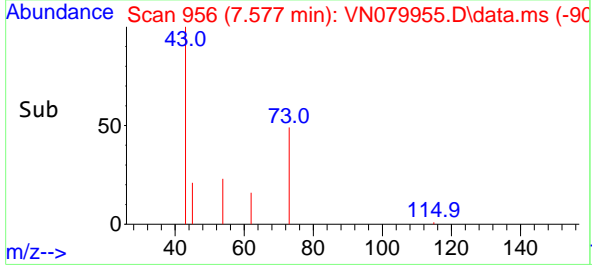
Tgt Ion: 75 Resp: 29767
 Ion Ratio Lower Upper
 75 100
 110 8.4 19.1 57.3#
 77 0.0 25.0 37.4#

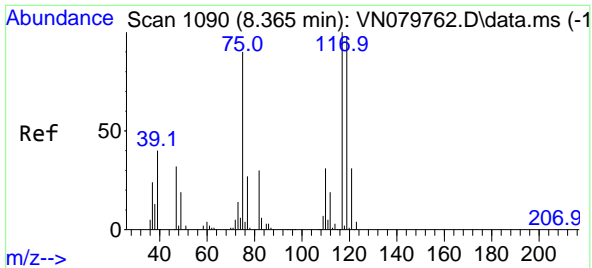


#37
 Ethyl Acetate
 Concen: 1.383 ug/l
 RT: 7.577 min Scan# 956
 Delta R.T. 0.012 min
 Lab File: VN079955.D
 Acq: 07 Nov 2023 08:53



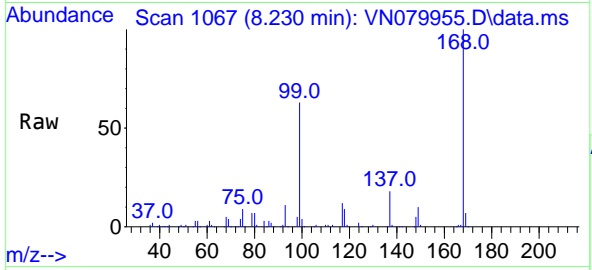
Tgt Ion: 43 Resp: 8485
 Ion Ratio Lower Upper
 43 100
 61 5.5 13.2 19.8#
 70 7.1 11.3 16.9#



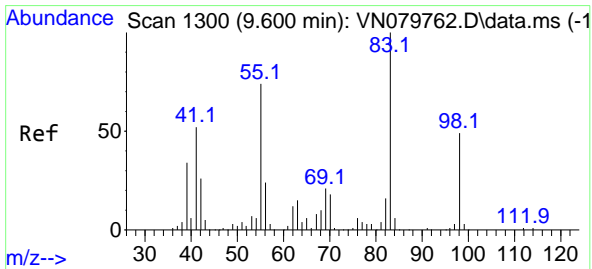
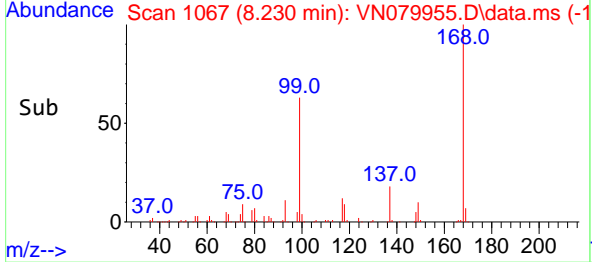
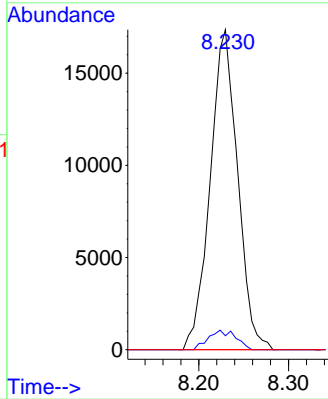


#38
 Carbon Tetrachloride
 Concen: 5.471 ug/l
 RT: 8.230 min Scan# 1067
 Delta R.T. -0.129 min
 Lab File: VN079955.D
 Acq: 07 Nov 2023 08:53

Instrument : MSVOA_N
 ClientSampleId :

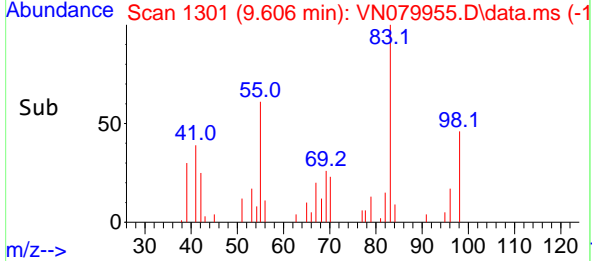
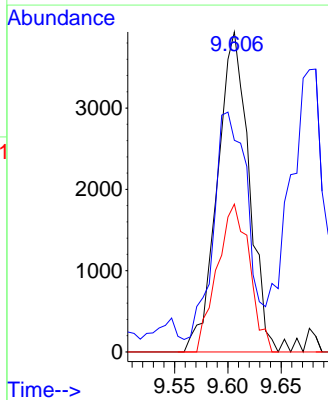
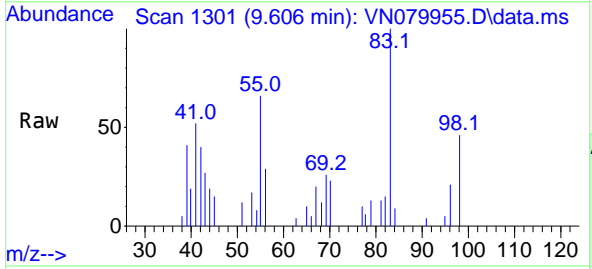


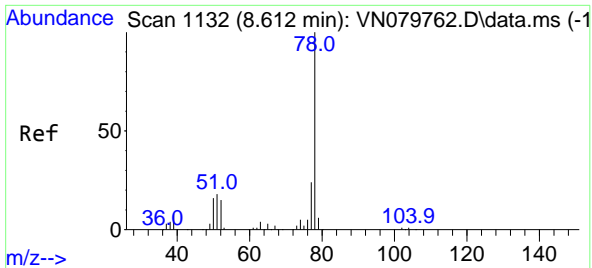
Tgt Ion: 117 Resp: 36898
 Ion Ratio Lower Upper
 117 100
 119 4.4 77.3 115.9#
 121 0.0 23.3 34.9#



#39
 Methylcyclohexane
 Concen: 1.287 ug/l
 RT: 9.606 min Scan# 1301
 Delta R.T. 0.000 min
 Lab File: VN079955.D
 Acq: 07 Nov 2023 08:53

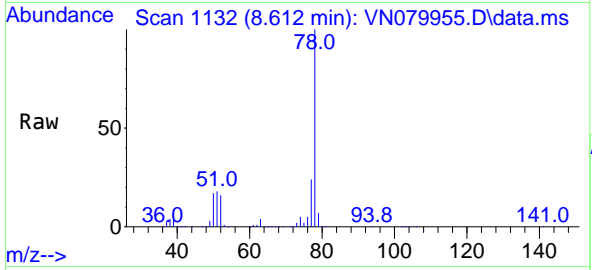
Tgt Ion: 83 Resp: 8102
 Ion Ratio Lower Upper
 83 100
 55 61.2 49.1 73.7
 98 46.2 40.6 61.0



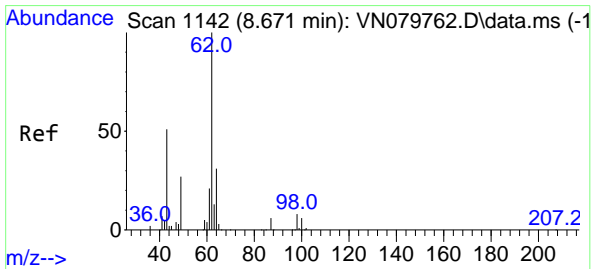
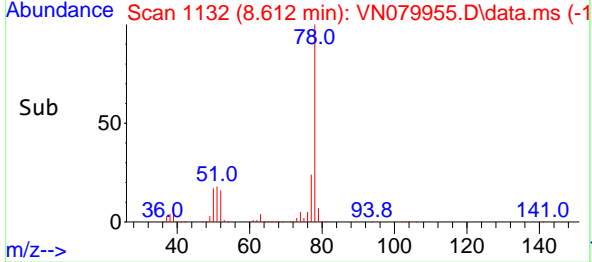
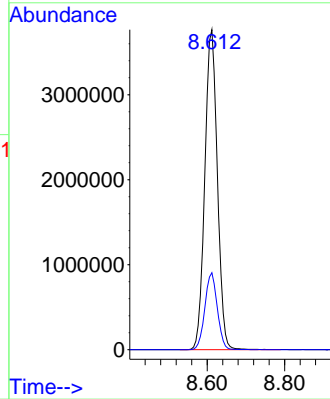


#40
Benzene
Concen: 421.553 ug/l
RT: 8.612 min Scan# 1132
Delta R.T. 0.000 min
Lab File: VN079955.D
Acq: 07 Nov 2023 08:53

Instrument :
MSVOA_N
ClientSampleId :

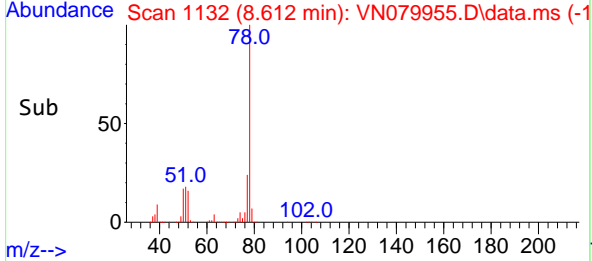
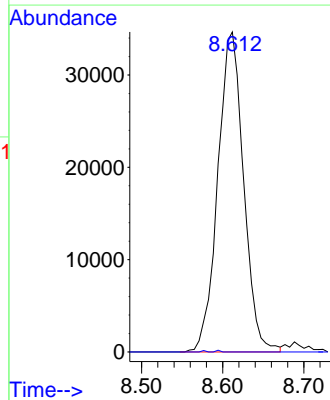
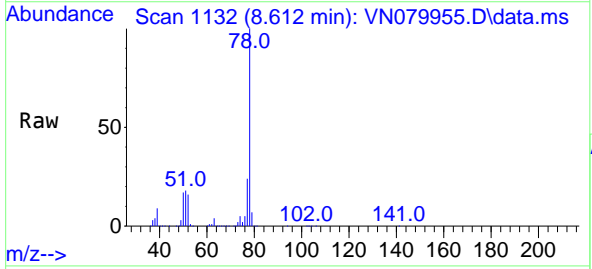


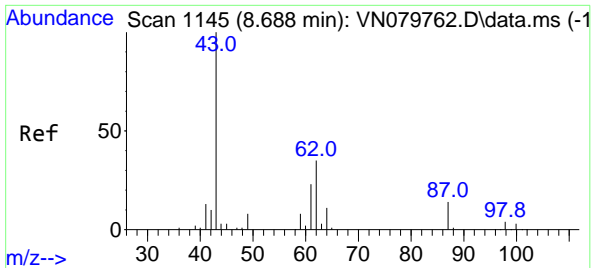
Tgt Ion: 78 Resp: 8448866
Ion Ratio Lower Upper
78 100
77 24.0 19.0 28.6



#42
1,2-Dichloroethane
Concen: 10.937 ug/l
RT: 8.612 min Scan# 1132
Delta R.T. -0.059 min
Lab File: VN079955.D
Acq: 07 Nov 2023 08:53

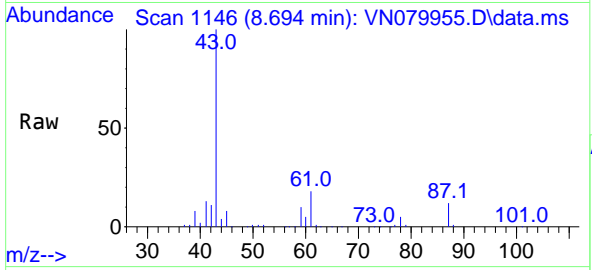
Tgt Ion: 62 Resp: 76566
Ion Ratio Lower Upper
62 100
98 0.1 0.0 19.8



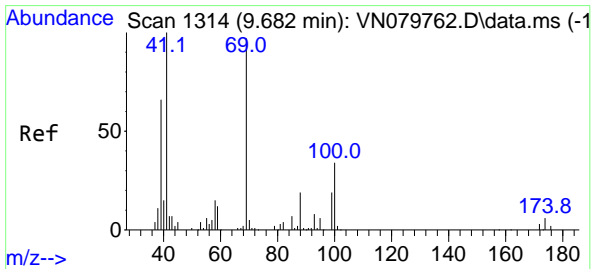
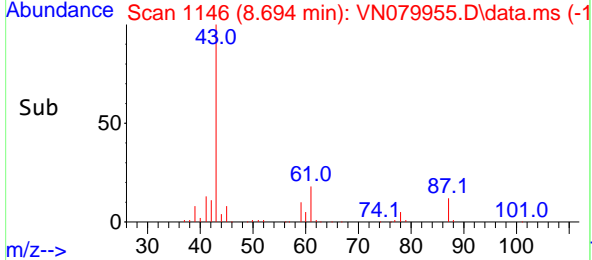
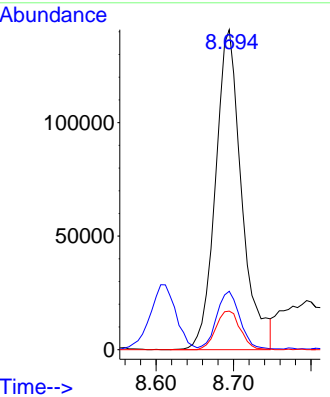


#43
 Isopropyl Acetate
 Concen: 30.895 ug/l
 RT: 8.694 min Scan# 1146
 Delta R.T. 0.006 min
 Lab File: VN079955.D
 Acq: 07 Nov 2023 08:53

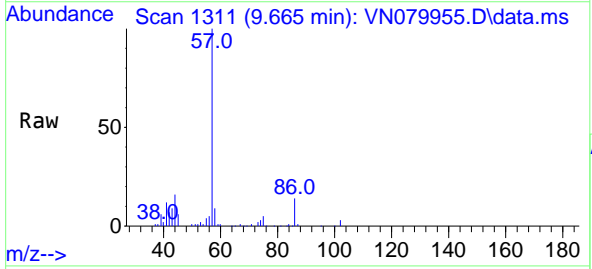
Instrument : MSVOA_N
 ClientSampleId :



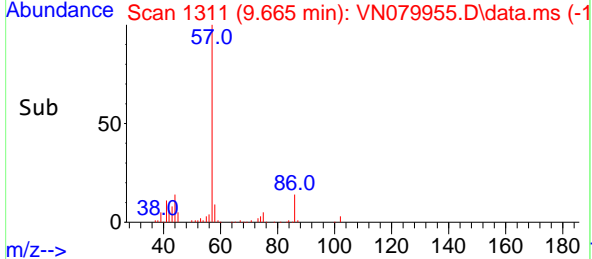
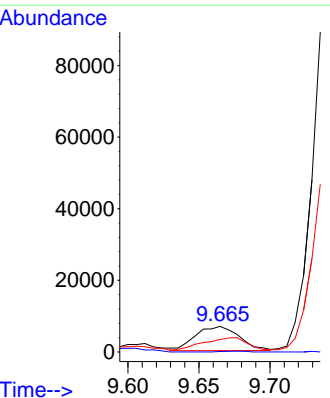
Tgt Ion: 43 Resp: 332507
 Ion Ratio Lower Upper
 43 100
 61 15.9 24.7 37.1#
 87 11.2 14.6 21.8#

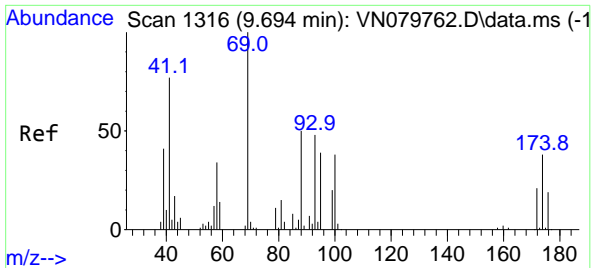


#48
 Methyl methacrylate
 Concen: 3.074 ug/l
 RT: 9.665 min Scan# 1311
 Delta R.T. -0.018 min
 Lab File: VN079955.D
 Acq: 07 Nov 2023 08:53



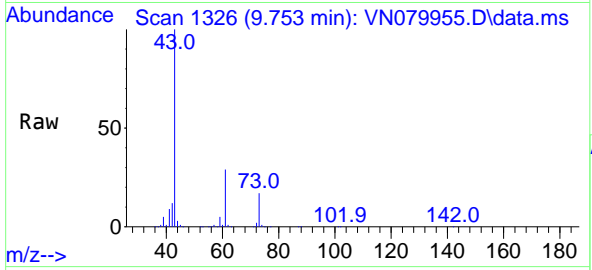
Tgt Ion: 41 Resp: 14493
 Ion Ratio Lower Upper
 41 100
 69 1.8 90.4 135.6#
 39 60.3 54.6 81.8



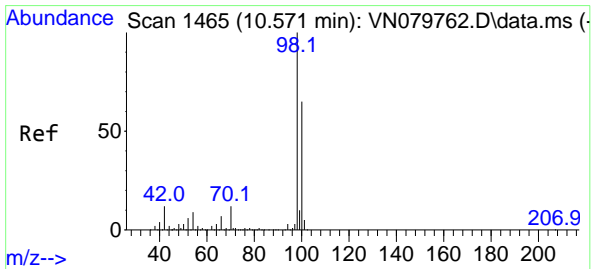
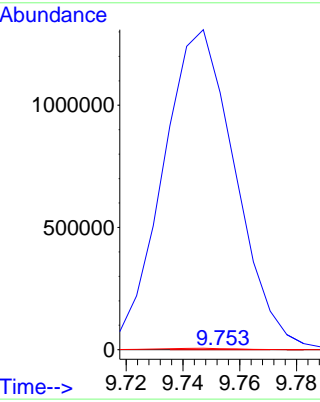
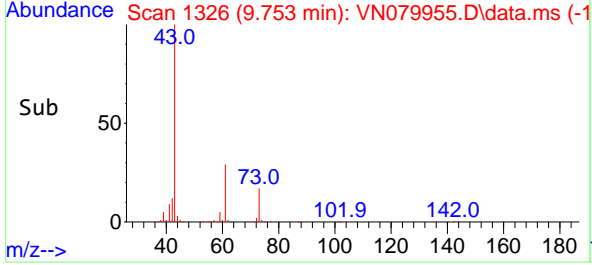


#49
 1,4-Dioxane
 Concen: 3.085 ug/l
 RT: 9.753 min Scan# 11
 Delta R.T. 0.059 min
 Lab File: VN079955.D
 Acq: 07 Nov 2023 08:53

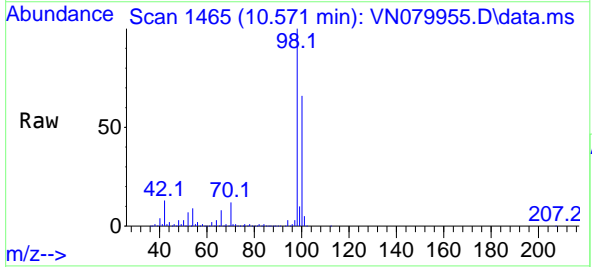
Instrument :
 MSVOA_N
 ClientSampled :



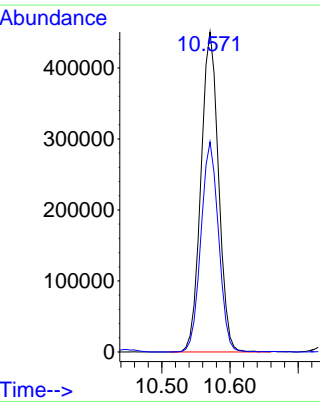
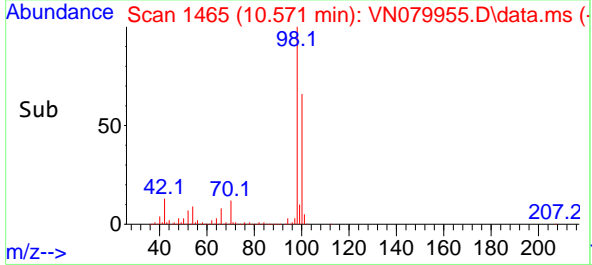
Tgt Ion: 88 Resp: 257
 Ion Ratio Lower Upper
 88 100
 43 915910.1 17.0 25.6#
 58 4157.2 47.0 70.4#

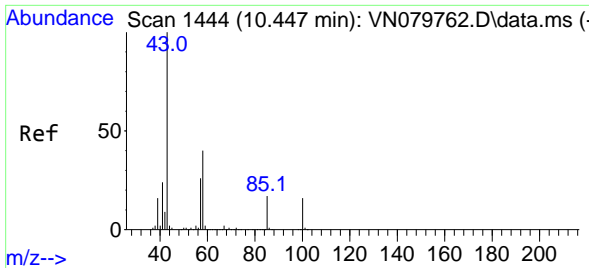


#50
 Toluene-d8
 Concen: 46.867 ug/l
 RT: 10.571 min Scan# 1465
 Delta R.T. 0.000 min
 Lab File: VN079955.D
 Acq: 07 Nov 2023 08:53



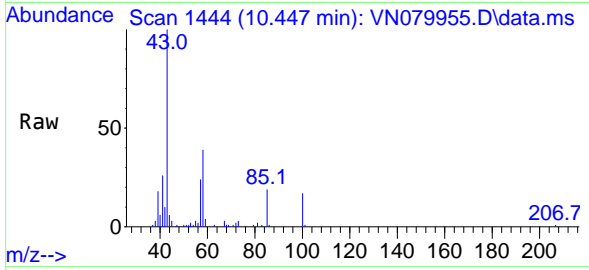
Tgt Ion: 98 Resp: 808593
 Ion Ratio Lower Upper
 98 100
 100 65.8 52.0 78.0



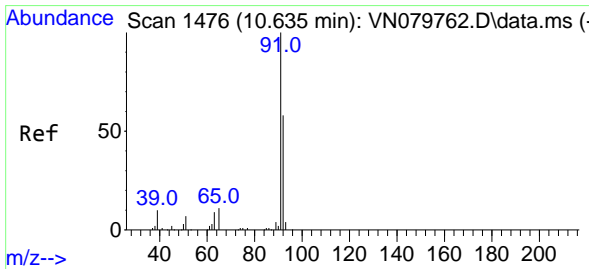
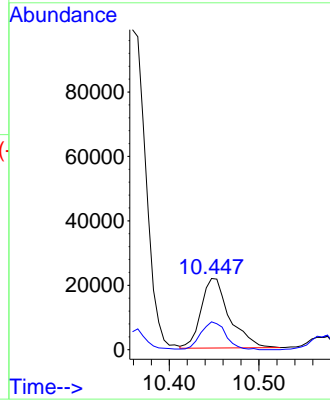
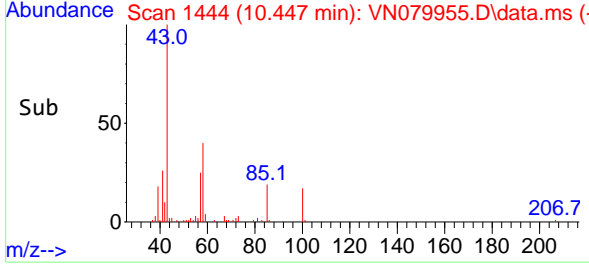


#51
 4-Methyl-2-Pentanone
 Concen: 7.837 ug/l
 RT: 10.447 min Scan# 1444
 Delta R.T. 0.000 min
 Lab File: VN079955.D
 Acq: 07 Nov 2023 08:53

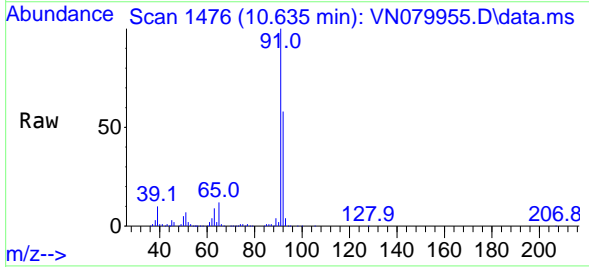
Instrument :
 MSVOA_N
 ClientSampleId :



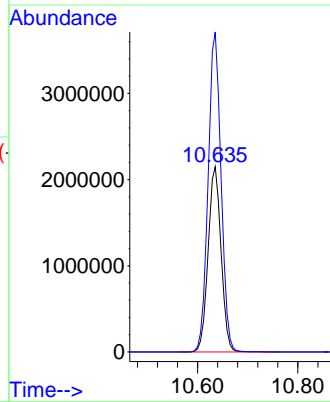
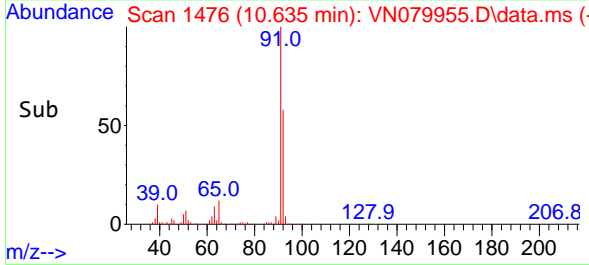
Tgt Ion: 43 Resp: 47483
 Ion Ratio Lower Upper
 43 100
 58 35.5 36.6 54.8#

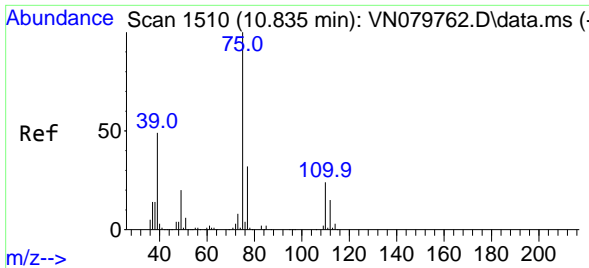


#52
 Toluene
 Concen: 323.445 ug/l
 RT: 10.635 min Scan# 1476
 Delta R.T. 0.000 min
 Lab File: VN079955.D
 Acq: 07 Nov 2023 08:53



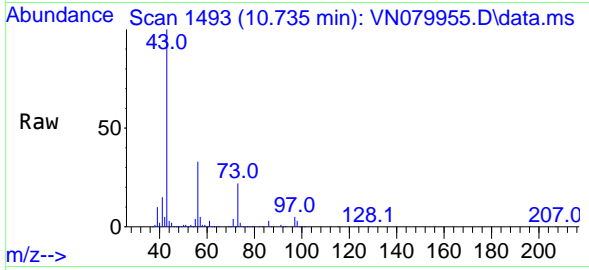
Tgt Ion: 92 Resp: 3843128
 Ion Ratio Lower Upper
 92 100
 91 172.9 137.4 206.0



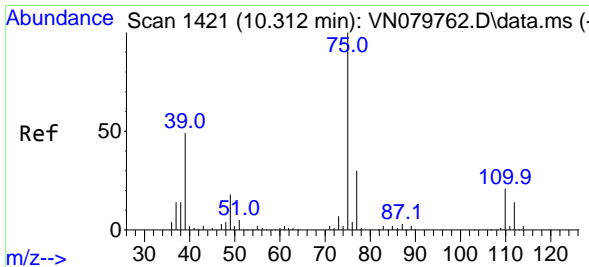
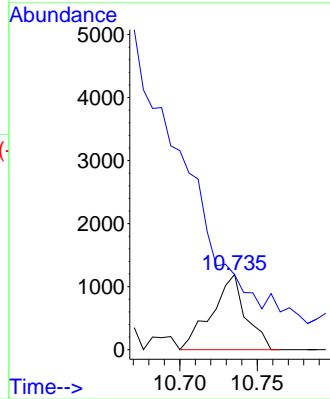
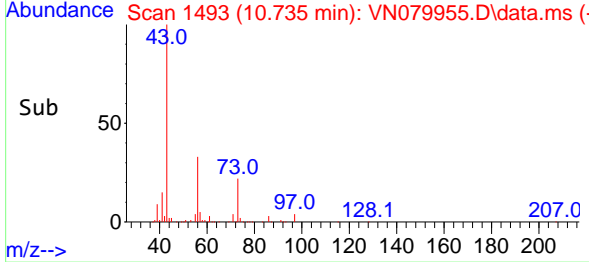


#53
 t-1,3-Dichloropropene
 Concen: 0.247 ug/l
 RT: 10.735 min Scan# 1430
 Delta R.T. -0.106 min
 Lab File: VN079955.D
 Acq: 07 Nov 2023 08:53

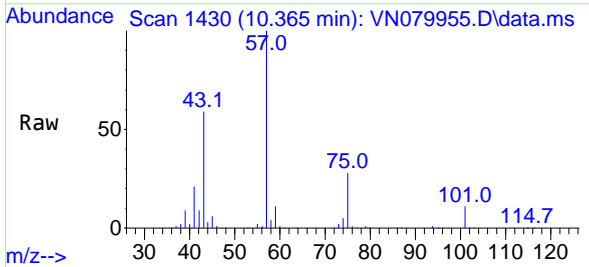
Instrument : MSVOA_N
 ClientSampleId :



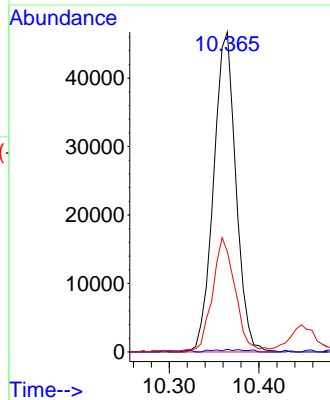
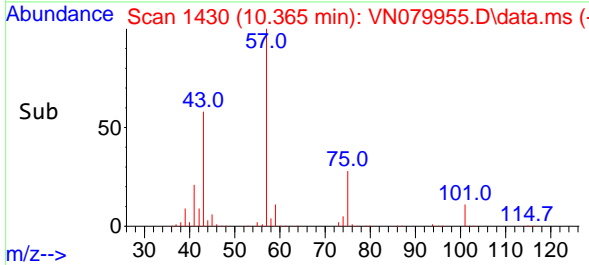
Tgt Ion: 75 Resp: 1809
 Ion Ratio Lower Upper
 75 100
 77 49.6 25.4 38.0#

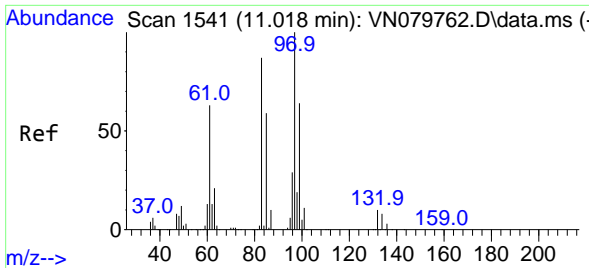


#54
 cis-1,3-Dichloropropene
 Concen: 10.120 ug/l
 RT: 10.365 min Scan# 1430
 Delta R.T. 0.047 min
 Lab File: VN079955.D
 Acq: 07 Nov 2023 08:53



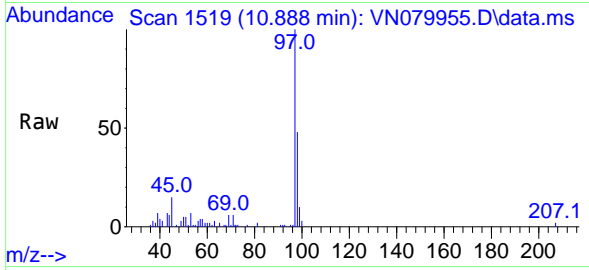
Tgt Ion: 75 Resp: 80657
 Ion Ratio Lower Upper
 75 100
 77 0.9 26.1 39.1#
 39 31.0 31.6 47.4#





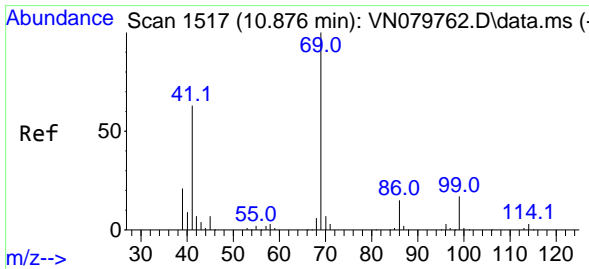
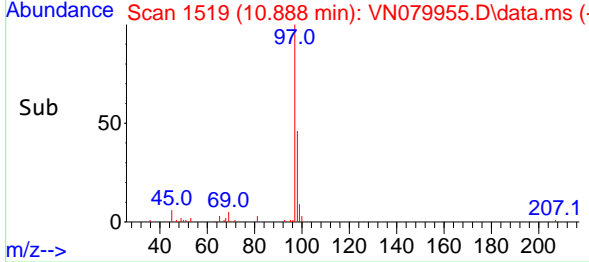
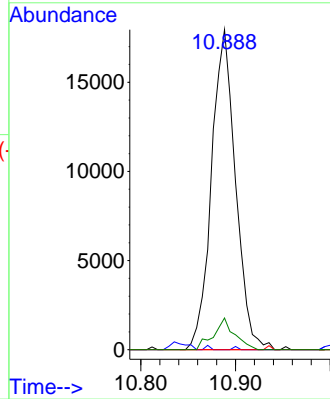
#55
 1,1,2-Trichloroethane
 Concen: 6.645 ug/l
 RT: 10.888 min Scan# 11
 Delta R.T. -0.129 min
 Lab File: VN079955.D
 Acq: 07 Nov 2023 08:53

Instrument : MSVOA_N
 ClientSampleId :



Tgt Ion: 97 Resp: 31757

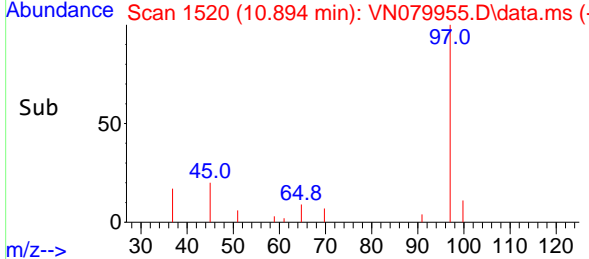
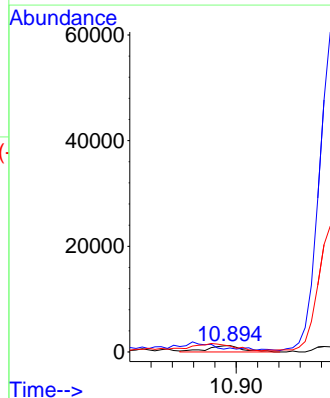
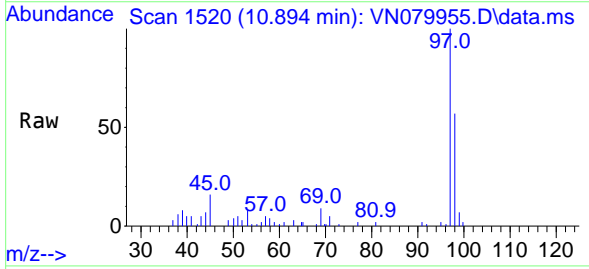
Ion	Ratio	Lower	Upper
97	100		
83	0.0	65.1	97.7#
85	0.0	43.4	65.2#
99	9.9	49.2	73.8#

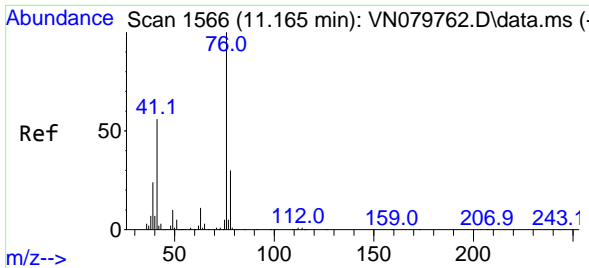


#56
 Ethyl methacrylate
 Concen: 0.406 ug/l
 RT: 10.894 min Scan# 1520
 Delta R.T. 0.018 min
 Lab File: VN079955.D
 Acq: 07 Nov 2023 08:53

Tgt Ion: 69 Resp: 2765

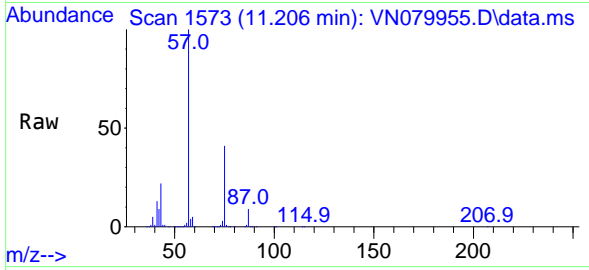
Ion	Ratio	Lower	Upper
69	100		
41	0.0	39.6	59.4#
39	0.0	28.6	43.0#



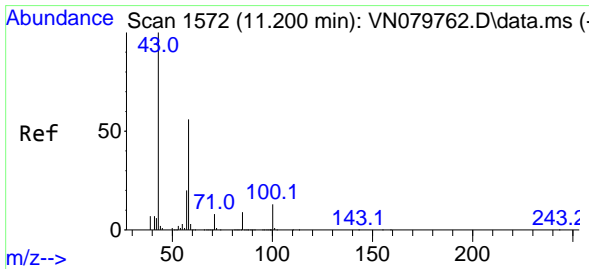
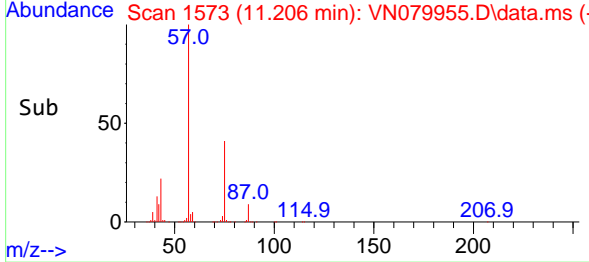
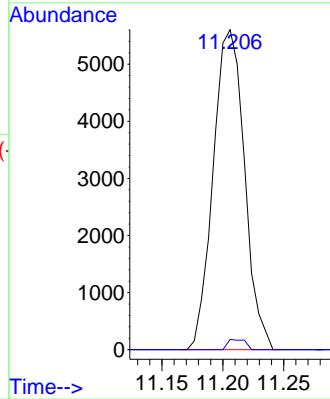


#57
 1,3-Dichloropropane
 Concen: 1.190 ug/l
 RT: 11.206 min Scan# 111
 Delta R.T. 0.041 min
 Lab File: VN079955.D
 Acq: 07 Nov 2023 08:53

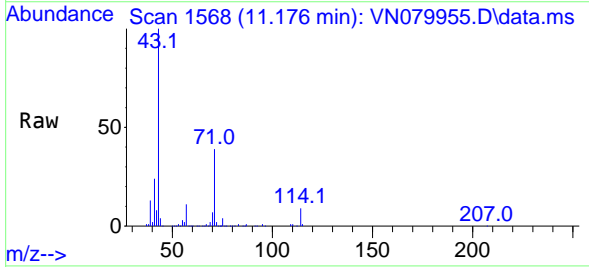
Instrument : MSVOA_N
 ClientSampleId :



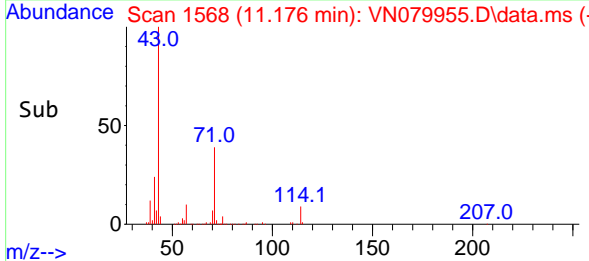
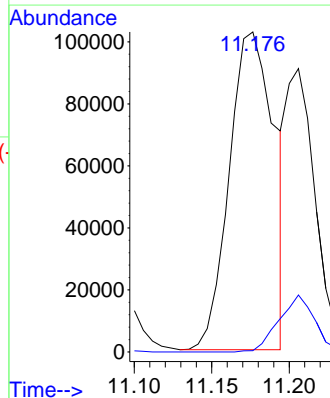
Tgt Ion: 76 Resp: 10024
 Ion Ratio Lower Upper
 76 100
 78 1.8 26.1 39.1#

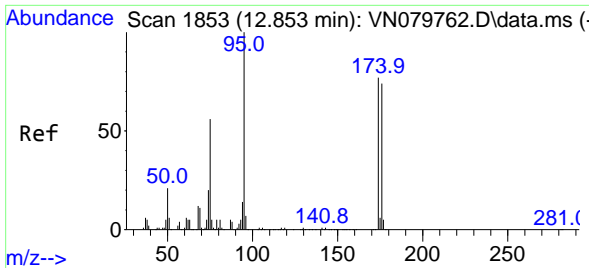


#59
 2-Hexanone
 Concen: 44.733 ug/l
 RT: 11.176 min Scan# 1568
 Delta R.T. -0.023 min
 Lab File: VN079955.D
 Acq: 07 Nov 2023 08:53



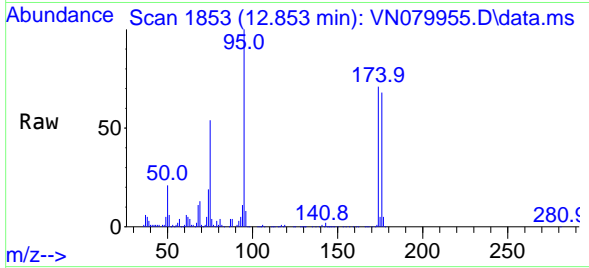
Tgt Ion: 43 Resp: 207347
 Ion Ratio Lower Upper
 43 100
 58 0.0 31.7 95.1#



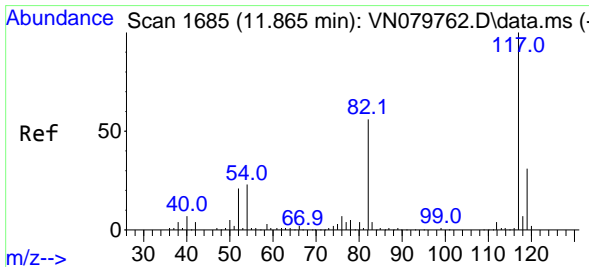
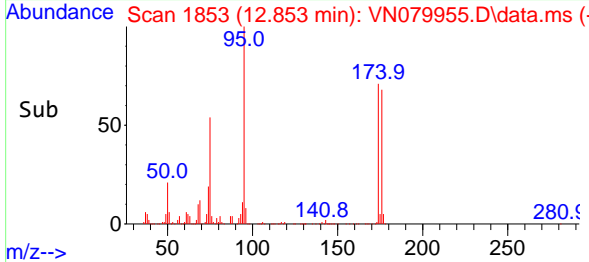
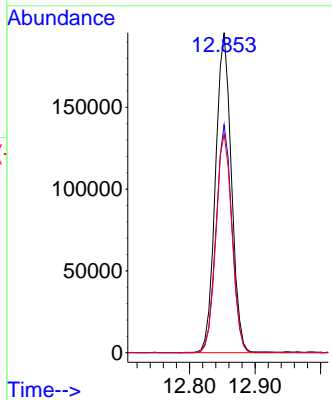


#62
 4-Bromofluorobenzene
 Concen: 57.324 ug/l
 RT: 12.853 min Scan# 1853
 Delta R.T. 0.000 min
 Lab File: VN079955.D
 Acq: 07 Nov 2023 08:53

Instrument : MSVOA_N
 ClientSampleId :

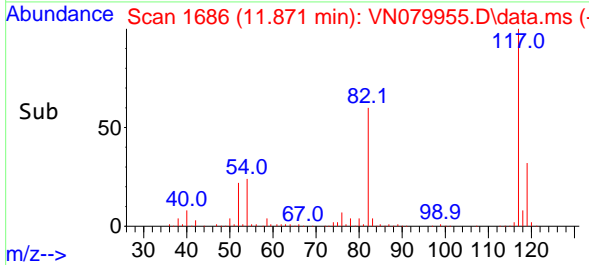
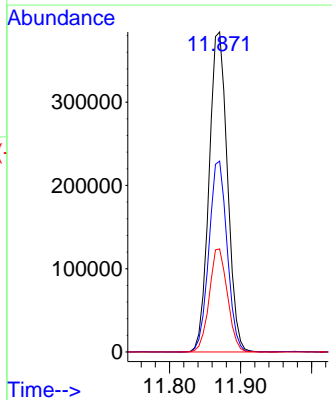
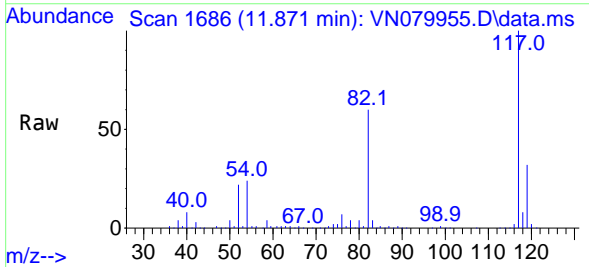


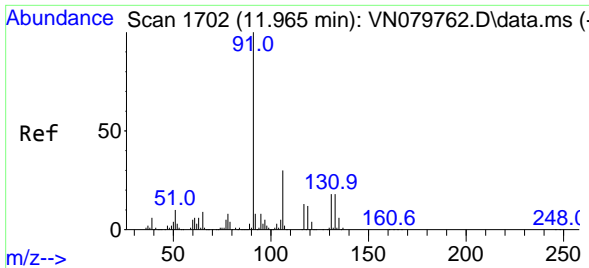
Tgt Ion: 95 Resp: 328004
 Ion Ratio Lower Upper
 95 100
 174 71.0 0.0 143.8
 176 68.7 0.0 135.8



#63
 Chlorobenzene-d5
 Concen: 50.000 ug/l
 RT: 11.871 min Scan# 1686
 Delta R.T. 0.000 min
 Lab File: VN079955.D
 Acq: 07 Nov 2023 08:53

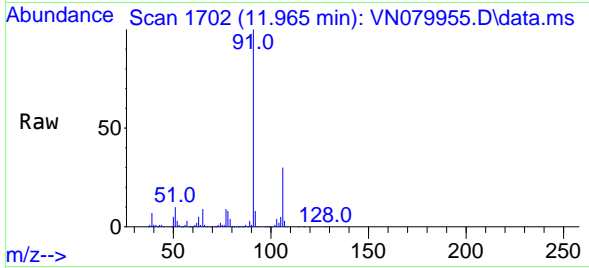
Tgt Ion: 117 Resp: 690660
 Ion Ratio Lower Upper
 117 100
 82 59.7 44.0 66.0
 119 32.2 25.6 38.4



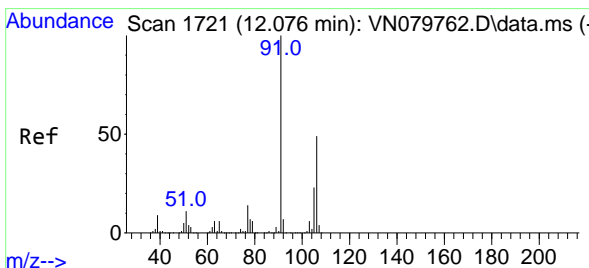
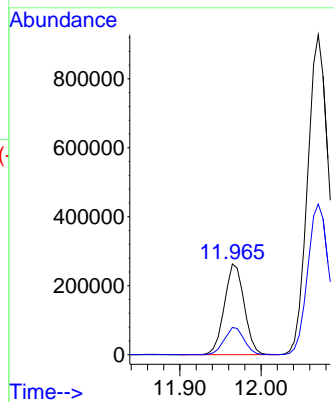
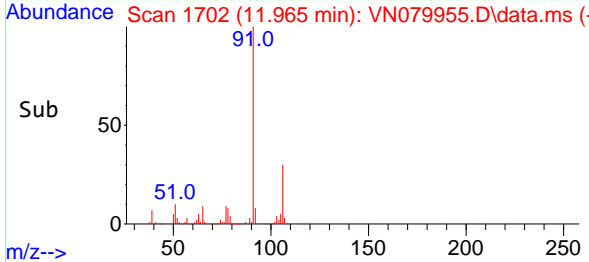


#67
 Ethyl Benzene
 Concen: 17.128 ug/l
 RT: 11.965 min Scan# 1702
 Delta R.T. 0.000 min
 Lab File: VN079955.D
 Acq: 07 Nov 2023 08:53

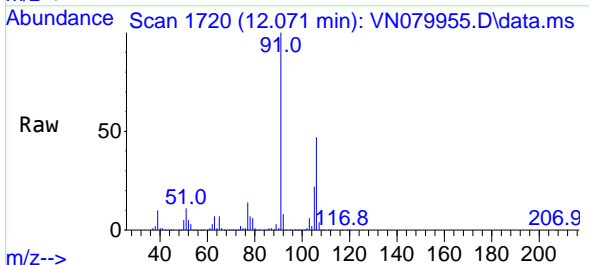
Instrument : MSVOA_N
 ClientSampleId :



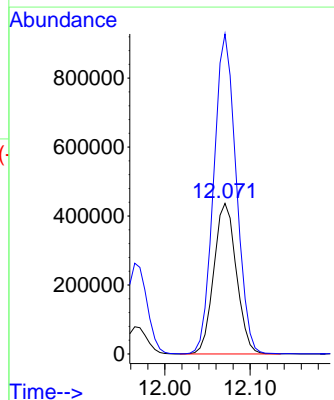
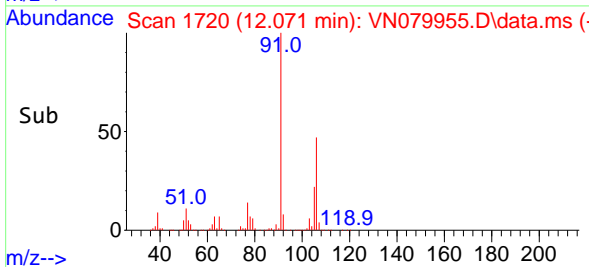
Tgt Ion: 91 Resp: 447072
 Ion Ratio Lower Upper
 91 100
 106 30.1 25.6 38.4

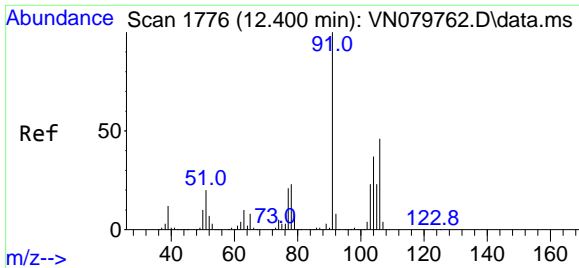


#68
 m/p-Xylenes
 Concen: 82.606 ug/l
 RT: 12.071 min Scan# 1720
 Delta R.T. 0.000 min
 Lab File: VN079955.D
 Acq: 07 Nov 2023 08:53



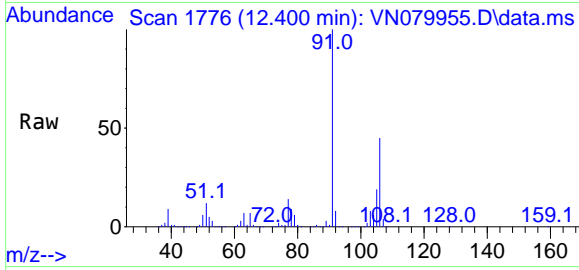
Tgt Ion: 106 Resp: 803211
 Ion Ratio Lower Upper
 106 100
 91 211.5 159.6 239.4



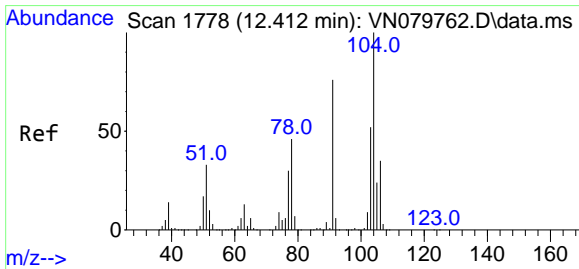
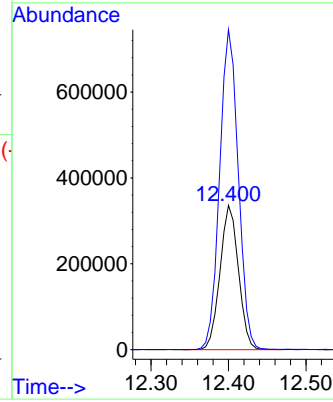
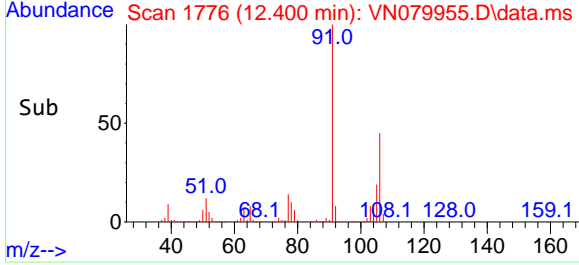


#69
 o-Xylene
 Concen: 59.332 ug/l
 RT: 12.400 min Scan# 1776
 Delta R.T. 0.000 min
 Lab File: VN079955.D
 Acq: 07 Nov 2023 08:53

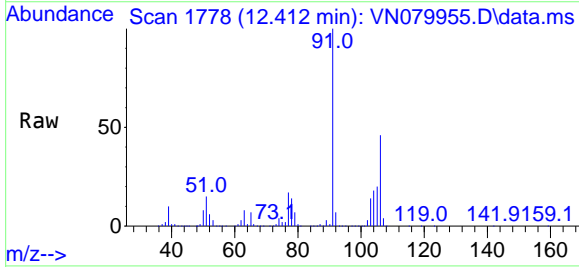
Instrument : MSVOA_N
 ClientSampleId :



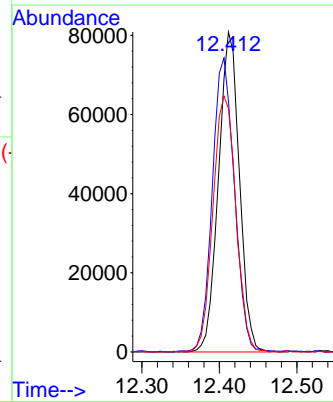
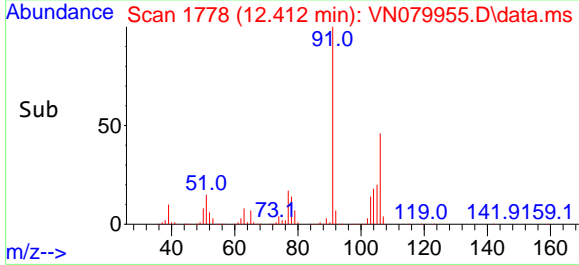
Tgt Ion:106 Resp: 555532
 Ion Ratio Lower Upper
 106 100
 91 224.0 105.2 315.5

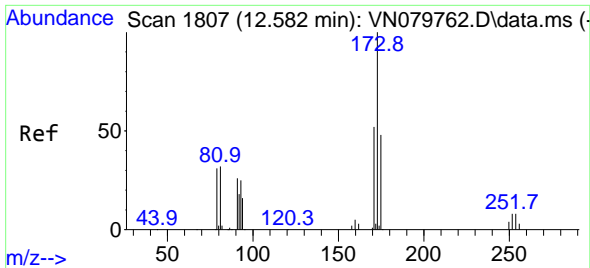


#70
 Styrene
 Concen: 10.056 ug/l
 RT: 12.412 min Scan# 1778
 Delta R.T. 0.000 min
 Lab File: VN079955.D
 Acq: 07 Nov 2023 08:53



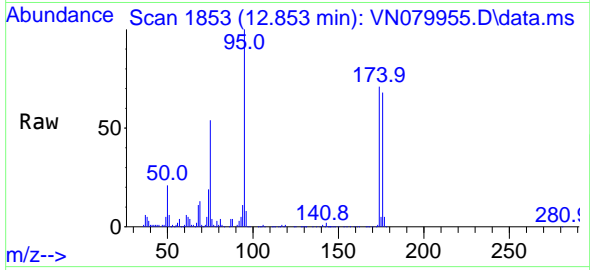
Tgt Ion:104 Resp: 151316
 Ion Ratio Lower Upper
 104 100
 78 97.3 39.5 59.3#
 103 87.8 43.2 64.8#



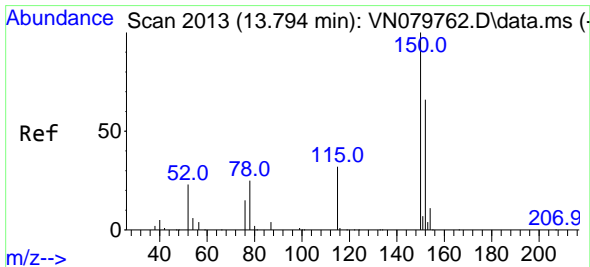
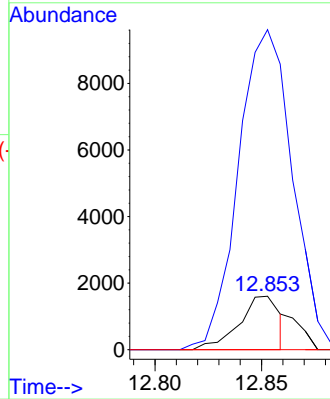
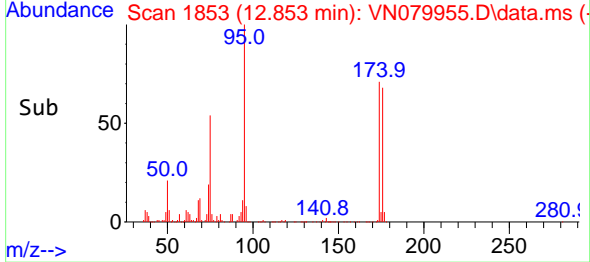


#71
 Bromoform
 Concen: 0.554 ug/l
 RT: 12.853 min Scan# 1807
 Delta R.T. 0.271 min
 Lab File: VN079955.D
 Acq: 07 Nov 2023 08:53

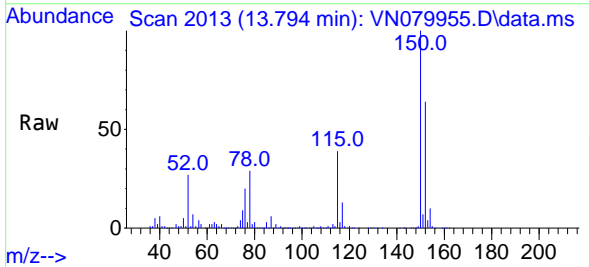
Instrument :
 MSVOA_N
 ClientSampleId :



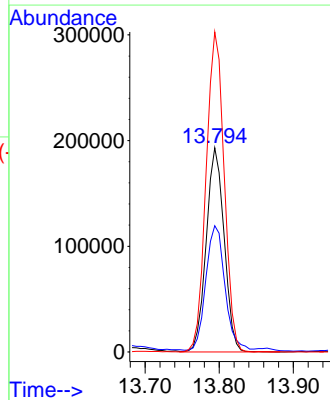
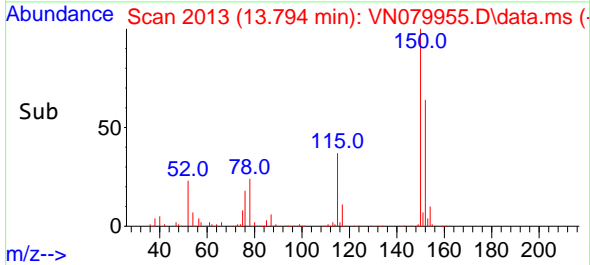
Tgt Ion:173 Resp: 2124
 Ion Ratio Lower Upper
 173 100
 175 645.7 24.3 73.0#
 254 0.0 0.0 0.0

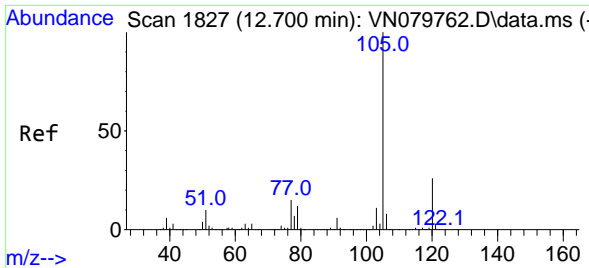


#72
 1,4-Dichlorobenzene-d4
 Concen: 50.000 ug/l
 RT: 13.794 min Scan# 2013
 Delta R.T. 0.000 min
 Lab File: VN079955.D
 Acq: 07 Nov 2023 08:53



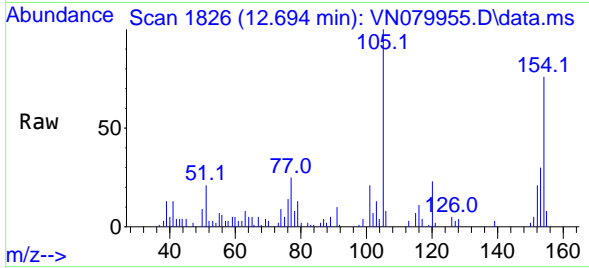
Tgt Ion:152 Resp: 324596
 Ion Ratio Lower Upper
 152 100
 115 64.7 32.3 96.8
 150 157.6 0.0 355.8



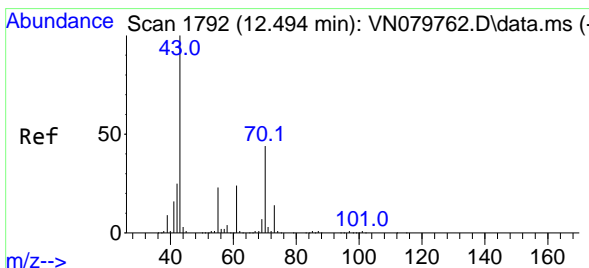
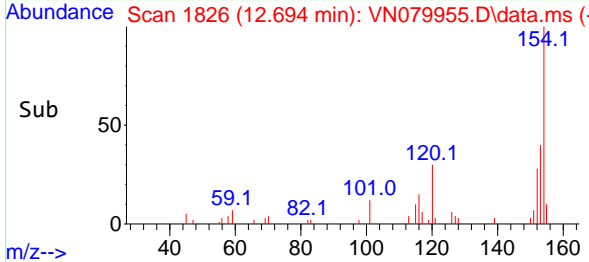
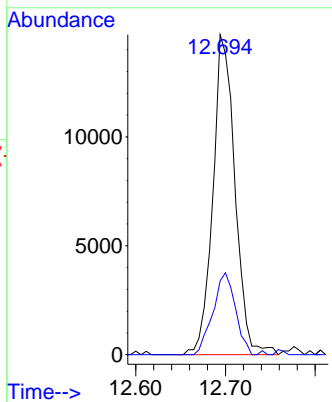


#73
 Isopropylbenzene
 Concen: 1.019 ug/l
 RT: 12.694 min Scan# 1826
 Delta R.T. -0.006 min
 Lab File: VN079955.D
 Acq: 07 Nov 2023 08:53

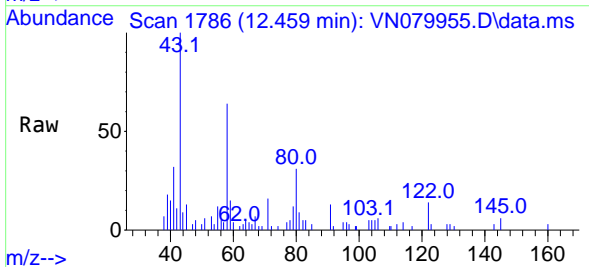
Instrument :
 MSVOA_N
 ClientSampleId :



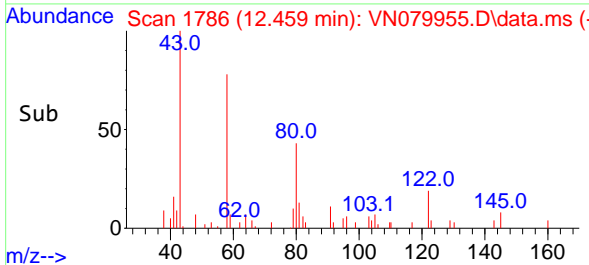
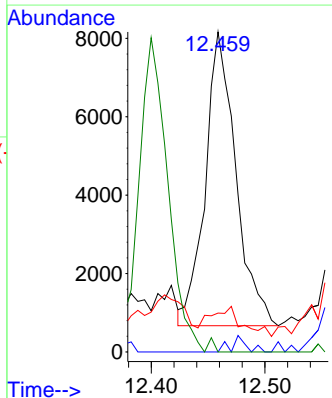
Tgt Ion:105 Resp: 25114
 Ion Ratio Lower Upper
 105 100
 120 26.0 13.1 39.1

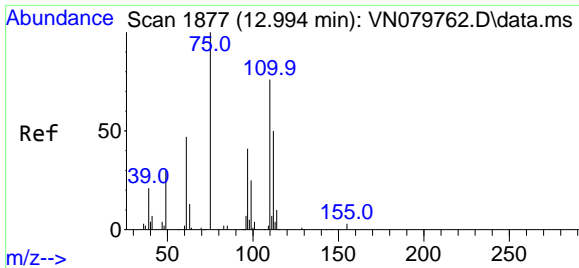


#74
 N-amy1 acetate
 Concen: 1.304 ug/l
 RT: 12.459 min Scan# 1786
 Delta R.T. -0.035 min
 Lab File: VN079955.D
 Acq: 07 Nov 2023 08:53



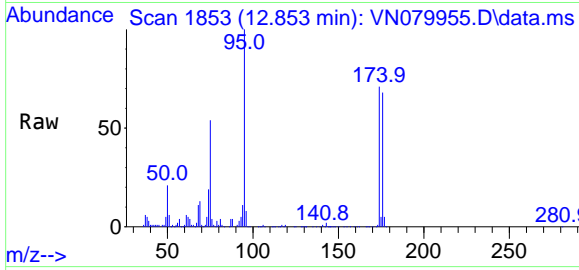
Tgt Ion: 43 Resp: 14020
 Ion Ratio Lower Upper
 43 100
 70 2.7 43.4 65.2#
 55 10.4 21.4 32.0#
 61 0.0 22.8 34.2#



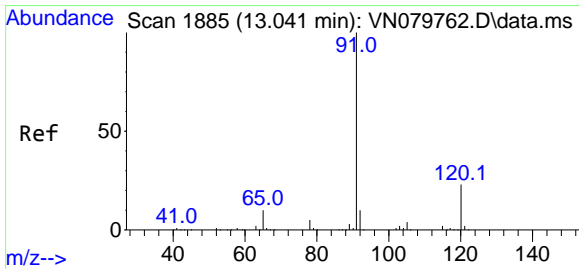
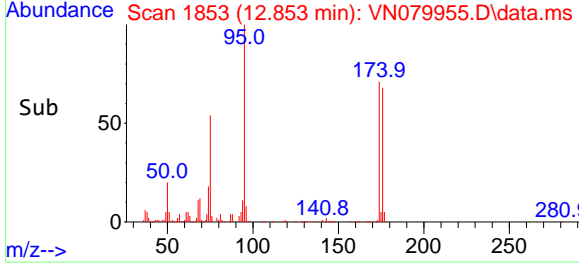
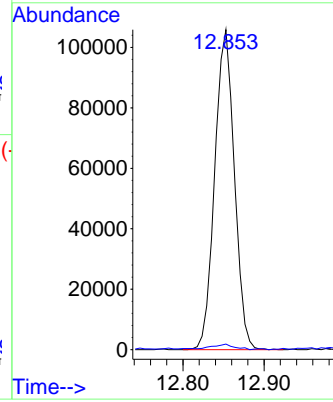


#76
 1,2,3-Trichloropropane
 Concen: 23.315 ug/l
 RT: 12.853 min Scan# 1853
 Delta R.T. -0.141 min
 Lab File: VN079955.D
 Acq: 07 Nov 2023 08:53

Instrument :
 MSVOA_N
 ClientSampleId :

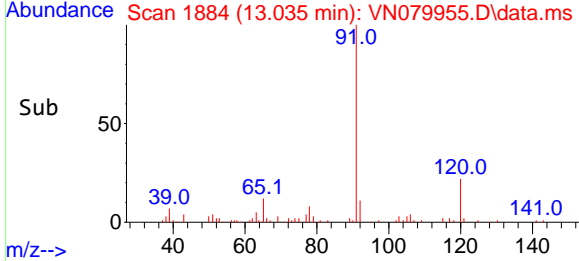
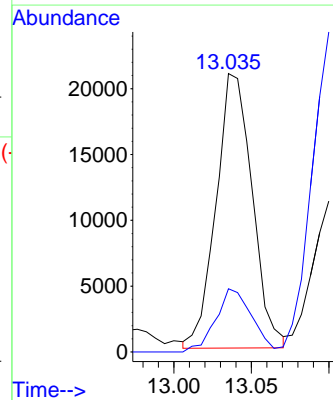
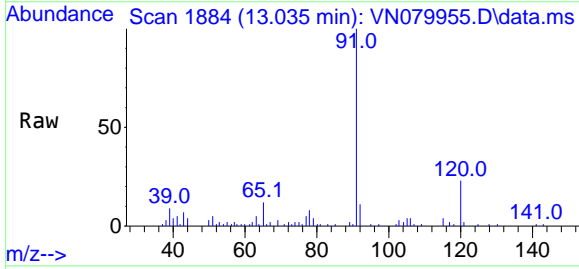


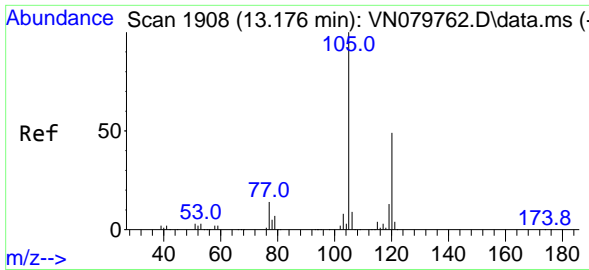
Tgt Ion: 75 Resp: 177673
 Ion Ratio Lower Upper
 75 100
 77 2.0 84.5 253.5#



#78
 n-propylbenzene
 Concen: 1.200 ug/l
 RT: 13.035 min Scan# 1884
 Delta R.T. -0.006 min
 Lab File: VN079955.D
 Acq: 07 Nov 2023 08:53

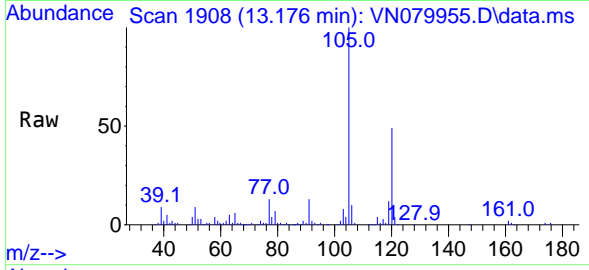
Tgt Ion: 91 Resp: 33840
 Ion Ratio Lower Upper
 91 100
 120 22.8 11.5 34.4



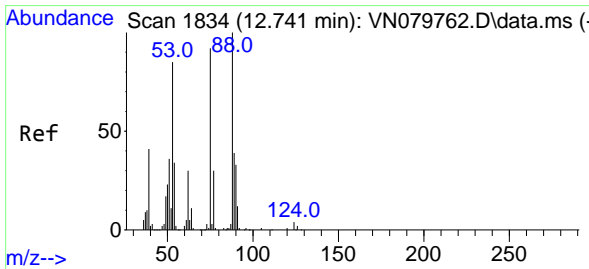
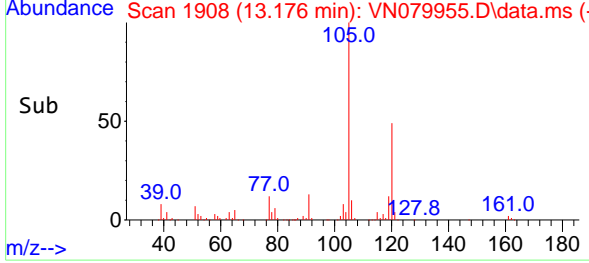
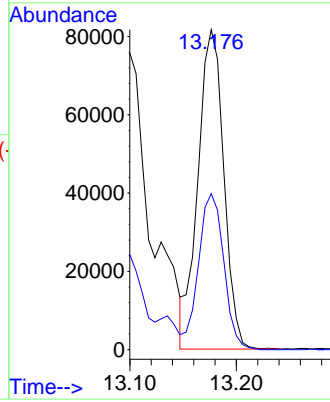


#80
 1,3,5-Trimethylbenzene
 Concen: 7.171 ug/l
 RT: 13.176 min Scan# 1908
 Delta R.T. 0.000 min
 Lab File: VN079955.D
 Acq: 07 Nov 2023 08:53

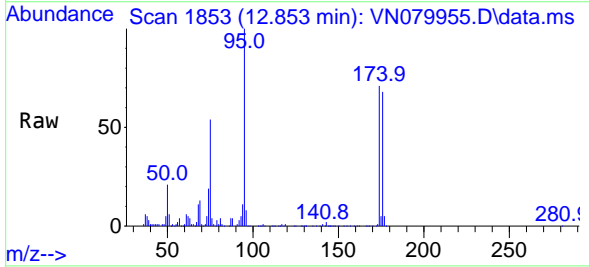
Instrument : MSVOA_N
 ClientSampleId :



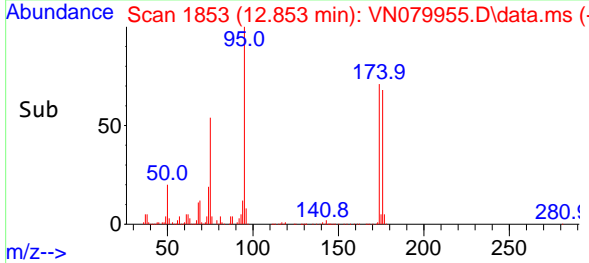
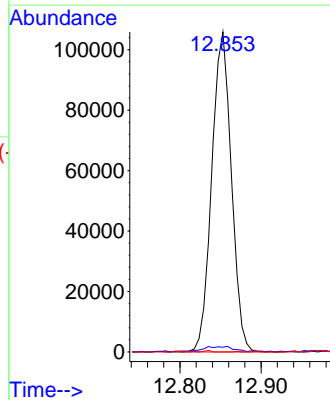
Tgt Ion:105 Resp: 137444
 Ion Ratio Lower Upper
 105 100
 120 48.0 24.1 72.3

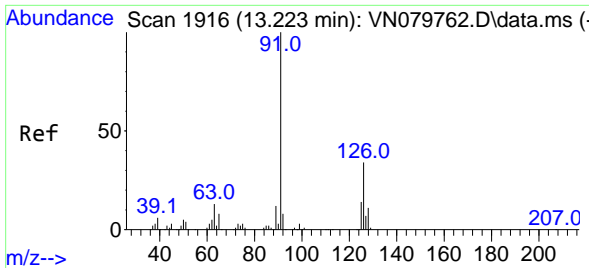


#81
 trans-1,4-Dichloro-2-butene
 Concen: 63.435 ug/l
 RT: 12.853 min Scan# 1853
 Delta R.T. 0.118 min
 Lab File: VN079955.D
 Acq: 07 Nov 2023 08:53



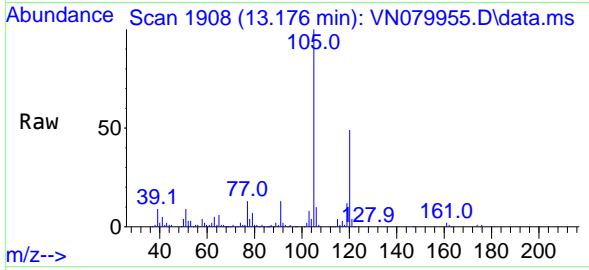
Tgt Ion: 75 Resp: 177673
 Ion Ratio Lower Upper
 75 100
 53 3.0 67.4 101.2#
 89 0.0 38.8 58.2#



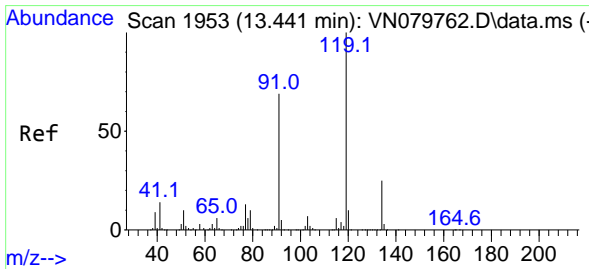
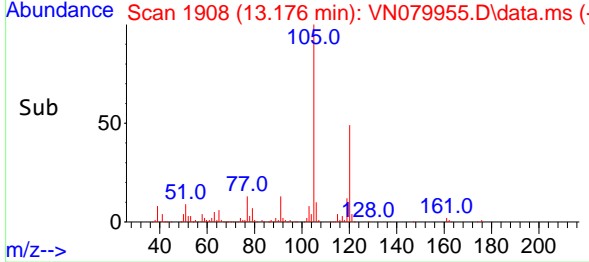
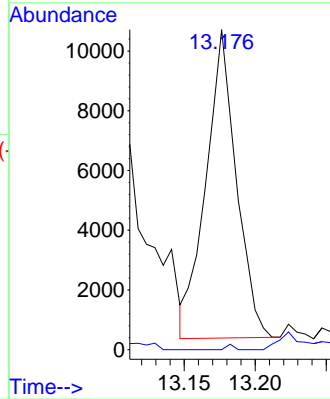


#82
 4-Chlorotoluene
 Concen: 0.856 ug/l
 RT: 13.176 min Scan# 1908
 Delta R.T. -0.047 min
 Lab File: VN079955.D
 Acq: 07 Nov 2023 08:53

Instrument : MSVOA_N
 ClientSampleId :

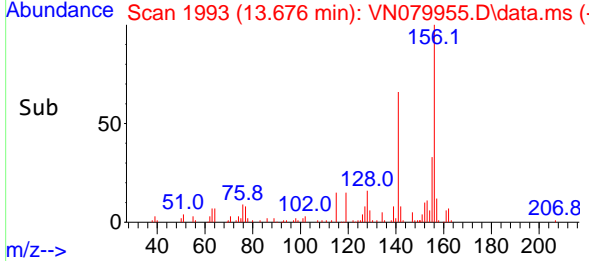
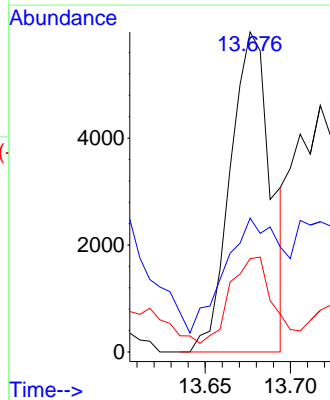
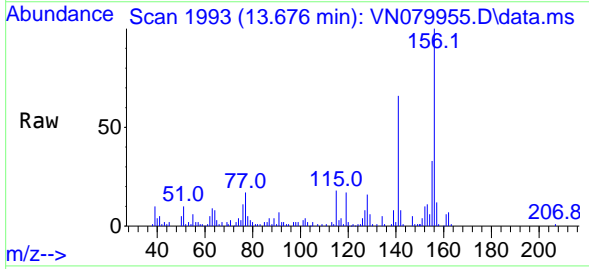


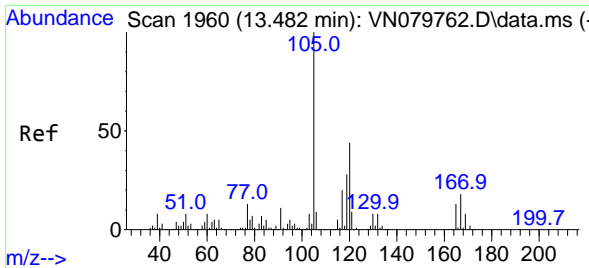
Tgt Ion: 91 Resp: 15335
 Ion Ratio Lower Upper
 91 100
 126 0.0 16.7 50.0#



#83
 tert-Butylbenzene
 Concen: 0.635 ug/l
 RT: 13.676 min Scan# 1993
 Delta R.T. 0.235 min
 Lab File: VN079955.D
 Acq: 07 Nov 2023 08:53

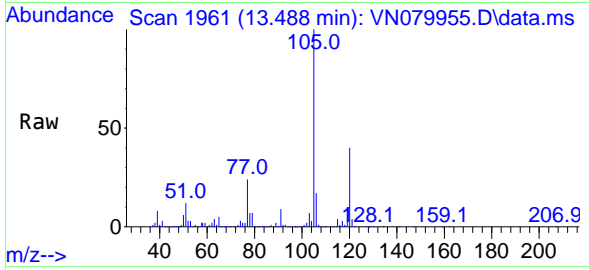
Tgt Ion: 119 Resp: 9963
 Ion Ratio Lower Upper
 119 100
 91 50.2 33.9 101.7
 134 27.9 13.2 39.6



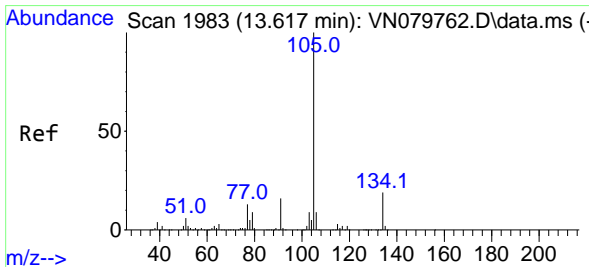
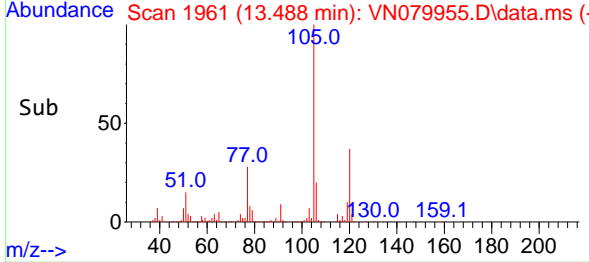
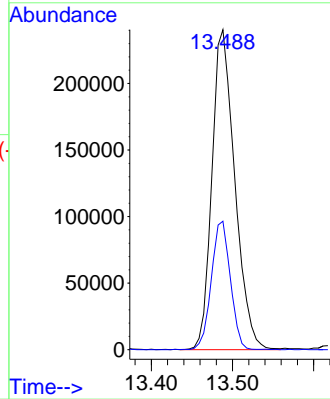


#84
 1,2,4-Trimethylbenzene
 Concen: 24.959 ug/l
 RT: 13.488 min Scan# 1960
 Delta R.T. 0.006 min
 Lab File: VN079955.D
 Acq: 07 Nov 2023 08:53

Instrument : MSVOA_N
 ClientSampleId :

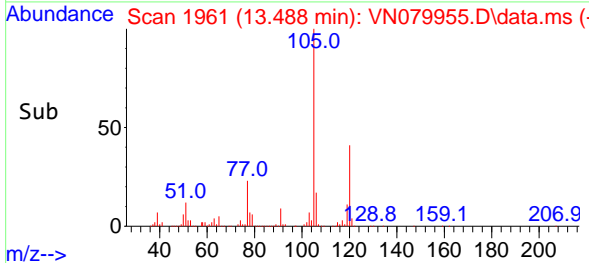
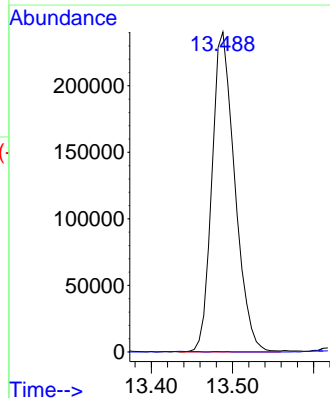
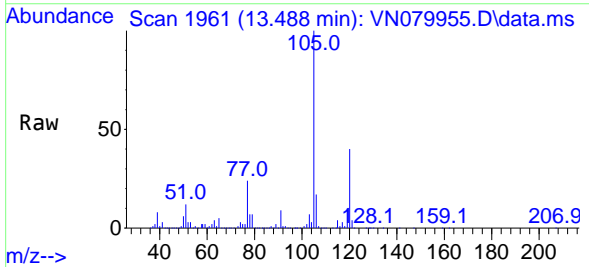


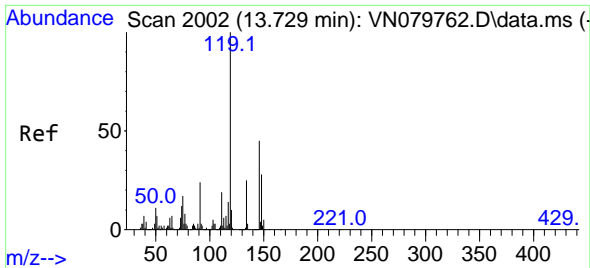
Tgt Ion:105 Resp: 470654
 Ion Ratio Lower Upper
 105 100
 120 33.4 22.0 66.0



#85
 sec-Butylbenzene
 Concen: 21.653 ug/l
 RT: 13.488 min Scan# 1961
 Delta R.T. -0.129 min
 Lab File: VN079955.D
 Acq: 07 Nov 2023 08:53

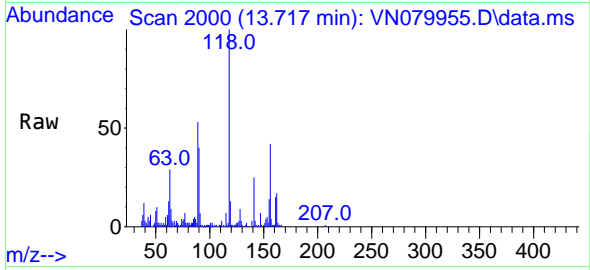
Tgt Ion:105 Resp: 470654
 Ion Ratio Lower Upper
 105 100
 134 0.1 9.8 29.3#





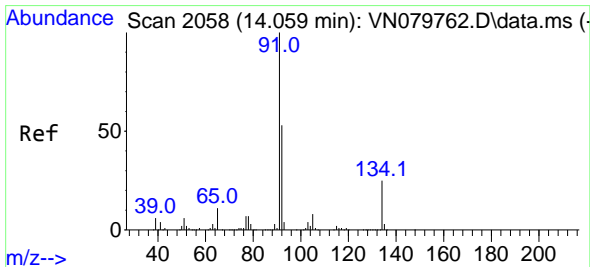
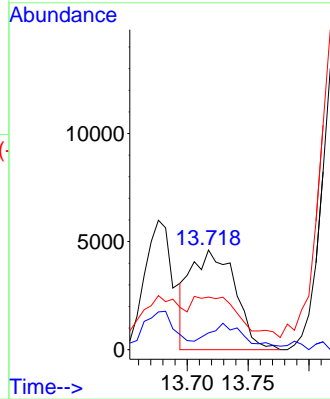
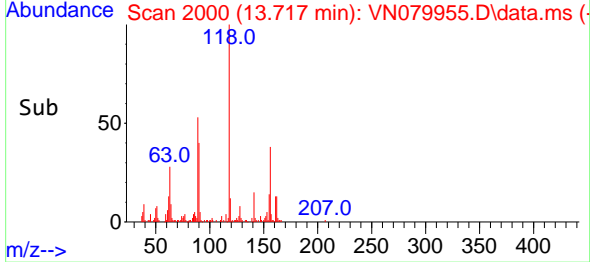
#86
 p-Isopropyltoluene
 Concen: 0.664 ug/l
 RT: 13.717 min Scan# 2000
 Delta R.T. -0.012 min
 Lab File: VN079955.D
 Acq: 07 Nov 2023 08:53

Instrument : MSVOA_N
 ClientSampleId :

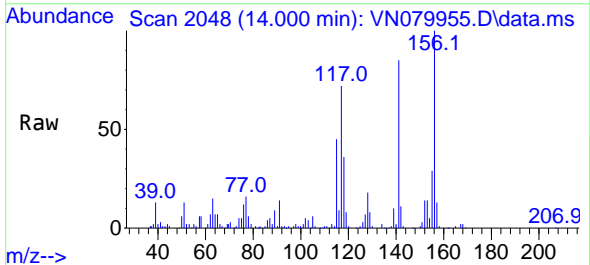


Tgt Ion:119 Resp: 11767

Ion	Ratio	Lower	Upper
119	100		
134	21.8	12.6	37.8
91	0.0	12.4	37.2#

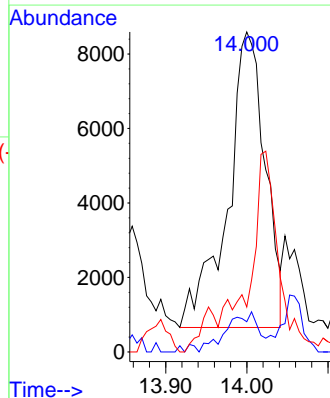
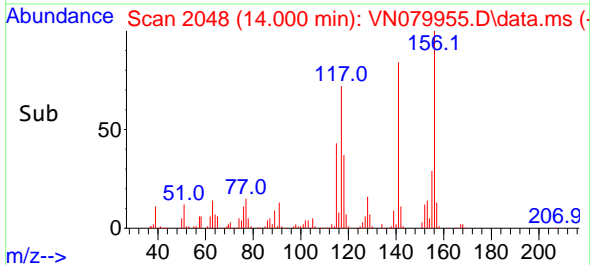


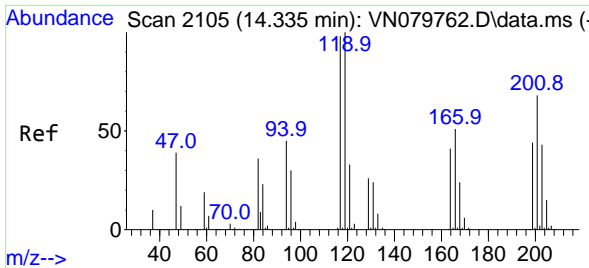
#89
 n-Butylbenzene
 Concen: 1.672 ug/l
 RT: 14.000 min Scan# 2048
 Delta R.T. -0.059 min
 Lab File: VN079955.D
 Acq: 07 Nov 2023 08:53



Tgt Ion: 91 Resp: 25523

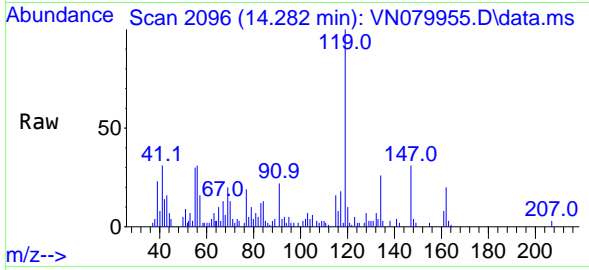
Ion	Ratio	Lower	Upper
91	100		
92	11.4	26.4	79.0#
134	0.0	12.6	37.6#



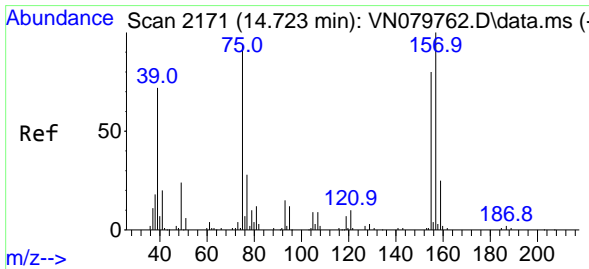
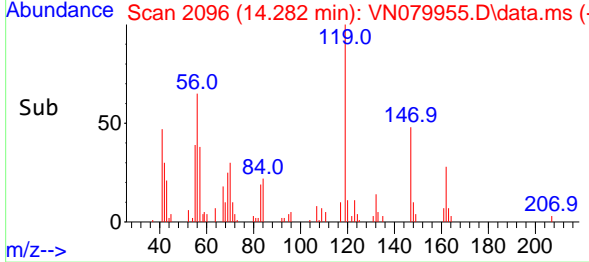
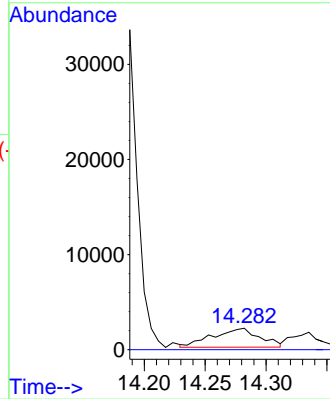


#90
 Hexachloroethane
 Concen: 1.520 ug/l
 RT: 14.282 min Scan# 2096
 Delta R.T. -0.053 min
 Lab File: VN079955.D
 Acq: 07 Nov 2023 08:53

Instrument : MSVOA_N
 ClientSampleId :

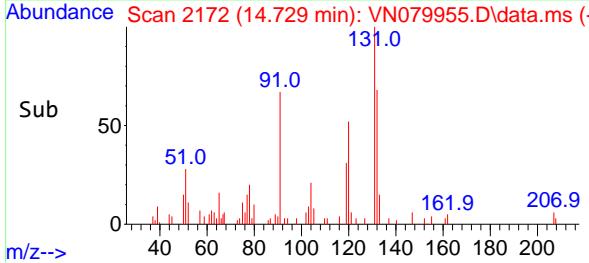
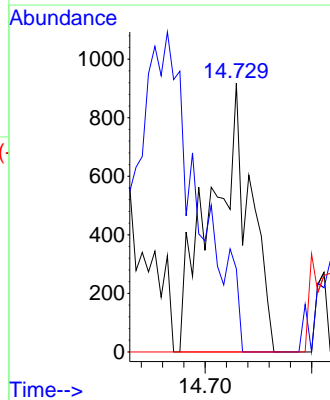
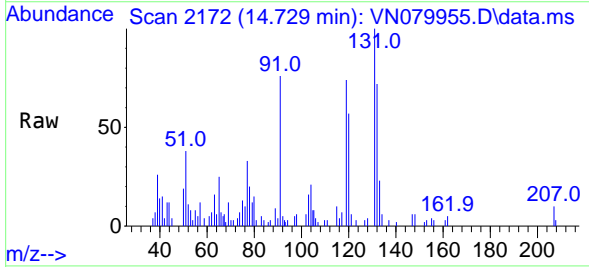


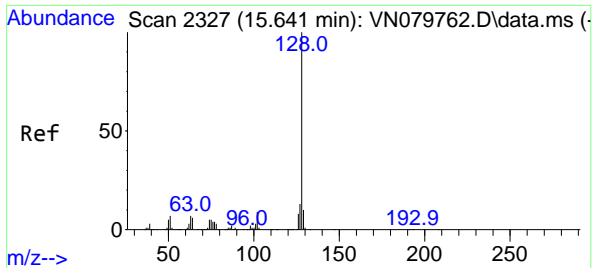
Tgt Ion:117 Resp: 5335
 Ion Ratio Lower Upper
 117 100
 201 0.0 29.3 88.0#



#92
 1,2-Dibromo-3-Chloropropane
 Concen: 1.578 ug/l
 RT: 14.729 min Scan# 2172
 Delta R.T. 0.006 min
 Lab File: VN079955.D
 Acq: 07 Nov 2023 08:53

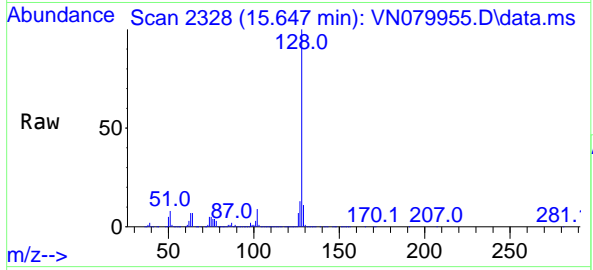
Tgt Ion: 75 Resp: 2337
 Ion Ratio Lower Upper
 75 100
 155 0.0 39.1 117.2#
 157 0.0 50.3 150.9#





#95
 Naphthalene
 Concen: 449.175 ug/l
 RT: 15.647 min Scan# 21
 Delta R.T. 0.006 min
 Lab File: VN079955.D
 Acq: 07 Nov 2023 08:53

Instrument :
 MSVOA_N
 ClientSampleId :



Tgt Ion:128 Resp: 7671465

Ion	Ratio	Lower	Upper
128	100		
127	12.9	10.0	15.0
129	11.0	8.7	13.1

