

Data Path : Z:\voasrv\HPCHEM1\MSVOA_N\Data\VN110722\
 Data File : VN075196.D
 Acq On : 07 Nov 2022 18:34
 Operator : JC\MD
 Sample : N5491-05
 Misc : 5.0mL/MSVOA_N/WATER
 ALS Vial : 15 Sample Multiplier: 1

Instrument :
 MSVOA_N
 ClientSampleId :
 TP-2

Quant Time: Nov 08 01:12:57 2022
 Quant Method : Z:\voasrv\HPCHEM1\MSVOA_N\methods\82N102622W.M
 Quant Title : SW846 8260
 QLast Update : Thu Oct 27 09:48:49 2022
 Response via : Initial Calibration

Compound	R.T.	QIon	Response	Conc	Units	Dev(Min)

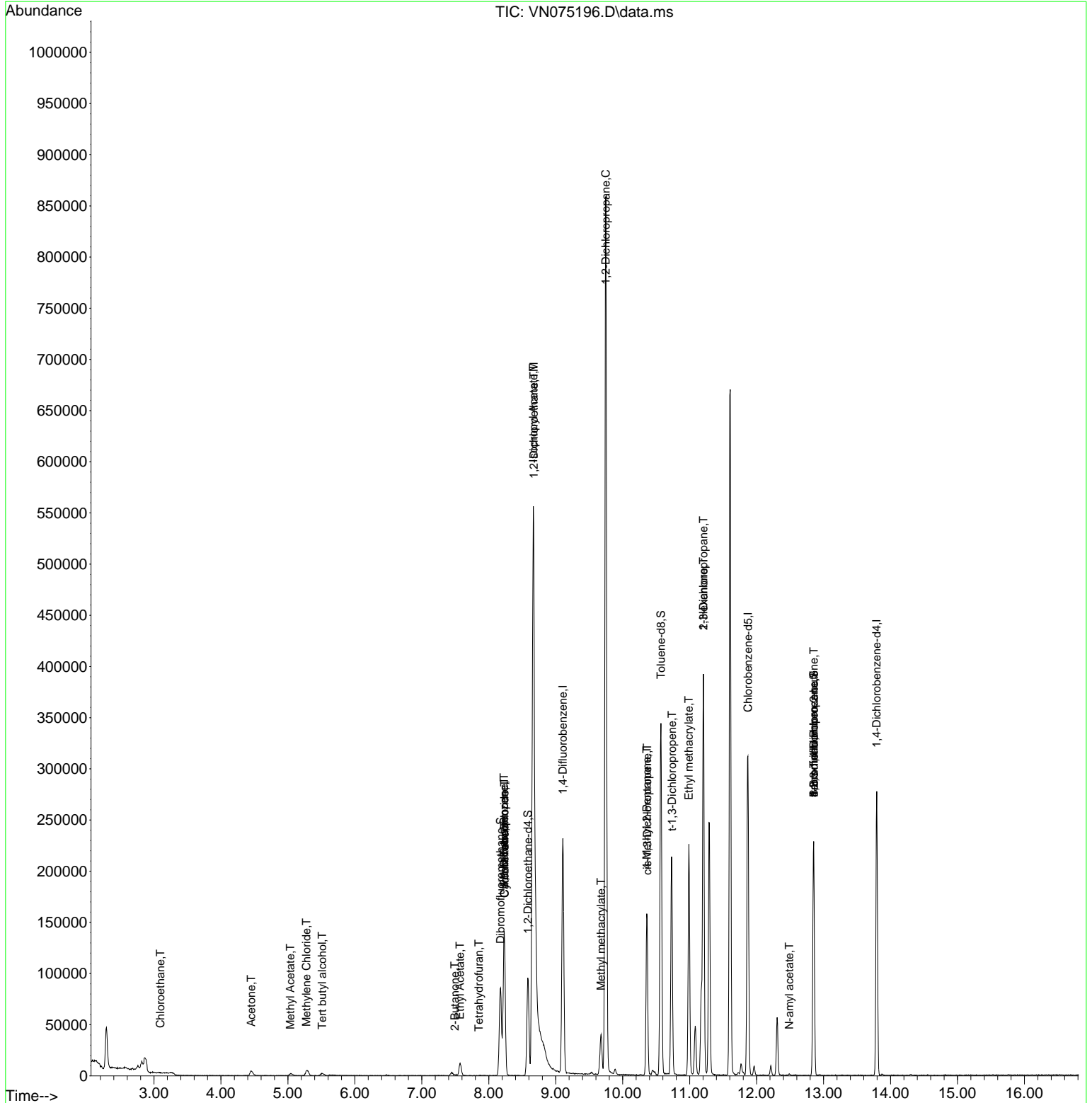
Internal Standards						
1) Pentafluorobenzene	8.229	168	98109	50.000	ug/l	0.00
34) 1,4-Difluorobenzene	9.106	114	203644	50.000	ug/l	0.00
63) Chlorobenzene-d5	11.870	117	187747	50.000	ug/l	0.00
72) 1,4-Dichlorobenzene-d4	13.794	152	72511	50.000	ug/l	0.00
System Monitoring Compounds						
33) 1,2-Dichloroethane-d4	8.582	65	78753	59.576	ug/l	0.00
Spiked Amount	50.000	Range 74 - 125	Recovery	=	119.160%	
35) Dibromofluoromethane	8.177	113	62272	52.089	ug/l	0.00
Spiked Amount	50.000	Range 75 - 124	Recovery	=	104.180%	
50) Toluene-d8	10.570	98	243904	52.586	ug/l	0.00
Spiked Amount	50.000	Range 86 - 113	Recovery	=	105.180%	
62) 4-Bromofluorobenzene	12.853	95	80112	49.169	ug/l	0.00
Spiked Amount	50.000	Range 83 - 123	Recovery	=	98.340%	
Target Compounds						
						Qvalue
6) Chloroethane	3.095	64	637	0.459	ug/l #	45
11) Tert butyl alcohol	5.512	59	1898	6.157	ug/l #	72
16) Acetone	4.453	43	9113	16.281	ug/l	94
18) Methyl Acetate	5.036	43	4242	2.320	ug/l #	85
20) Methylene Chloride	5.277	84	2634	2.111	ug/l #	72
25) 2-Butanone	7.494	43	650	0.738	ug/l #	43
29) Tetrahydrofuran	7.853	42	155	0.272	ug/l #	26
31) Cyclohexane	8.235	56	2535	1.289	ug/l #	34
36) 1,1-Dichloropropene	8.229	75	8851	4.782	ug/l #	51
37) Ethyl Acetate	7.571	43	17518	8.631	ug/l	98
38) Carbon Tetrachloride	8.235	117	10836	5.322	ug/l #	15
42) 1,2-Dichloroethane	8.671	62	2112	1.024	ug/l #	75
43) Isopropyl Acetate	8.665	43	681363	216.412	ug/l #	53
45) 1,2-Dichloropropane	9.747	63	998	0.740	ug/l #	42
48) Methyl methacrylate	9.676	41	2396	1.659	ug/l #	36
51) 4-Methyl-2-Pentanone	10.359	43	57887	28.492	ug/l #	44
53) t-1,3-Dichloropropene	10.735	75	441	0.205	ug/l #	43
54) cis-1,3-Dichloropropene	10.365	75	30681	13.469	ug/l #	68
56) Ethyl methacrylate	10.988	69	955	0.417	ug/l #	1
57) 1,3-Dichloropropane	11.206	76	4406	1.761	ug/l #	42
59) 2-Hexanone	11.206	43	41967	27.216	ug/l #	56
71) Bromoform	12.853	173	773	0.695	ug/l #	1
74) N-amyl acetate	12.488	43	941	0.437	ug/l #	38
76) 1,2,3-Trichloropropane	12.853	75	42262	27.450	ug/l #	1
81) trans-1,4-Dichloro-2-b...	12.853	75	42262	70.464	ug/l #	10

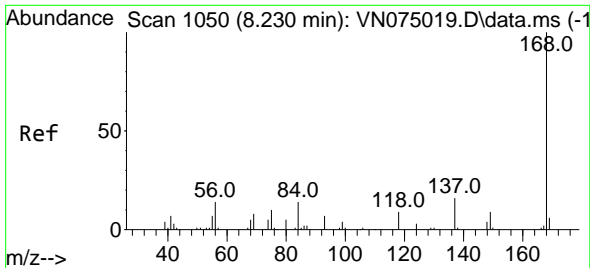
(#) = qualifier out of range (m) = manual integration (+) = signals summed

Data Path : Z:\voasrv\HPCHEM1\MSVOA_N\Data\VN110722\
 Data File : VN075196.D
 Acq On : 07 Nov 2022 18:34
 Operator : JC\MD
 Sample : N5491-05
 Misc : 5.0mL/MSVOA_N/WATER
 ALS Vial : 15 Sample Multiplier: 1

Instrument :
 MSVOA_N
 ClientSampleId :
 TP-2

Quant Time: Nov 08 01:12:57 2022
 Quant Method : Z:\voasrv\HPCHEM1\MSVOA_N\methods\82N102622W.M
 Quant Title : SW846 8260
 QLast Update : Thu Oct 27 09:48:49 2022
 Response via : Initial Calibration

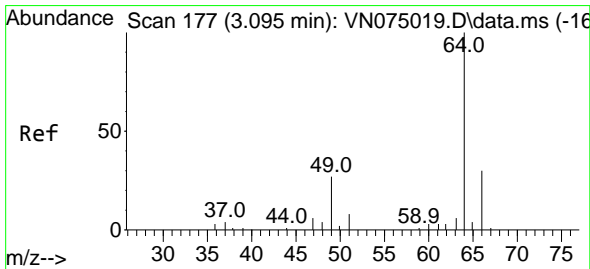
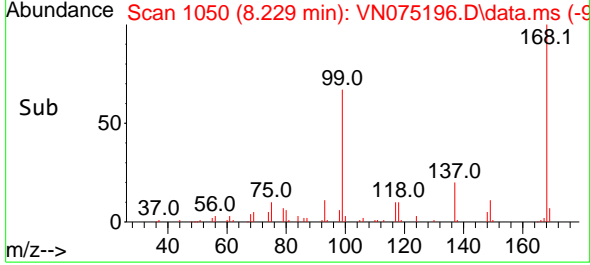
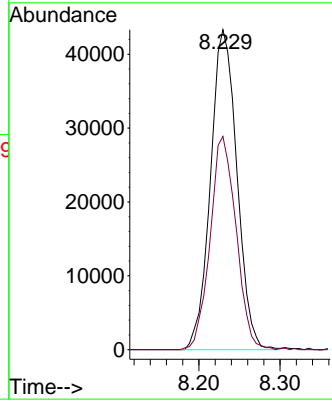
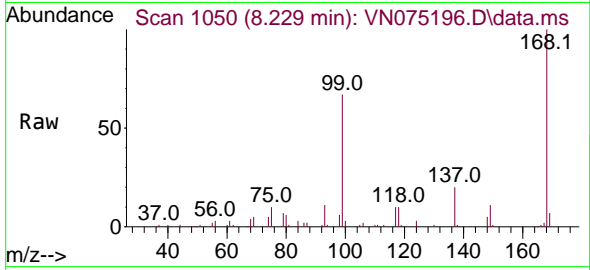




#1
 Pentafluorobenzene
 Concen: 50.000 ug/l
 RT: 8.229 min Scan# 10
 Delta R.T. -0.001 min
 Lab File: VN075196.D
 Acq: 07 Nov 2022 18:34

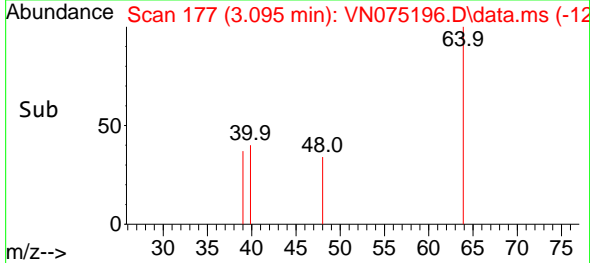
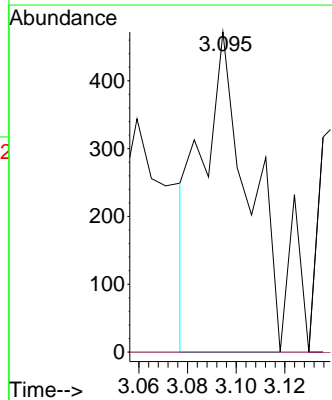
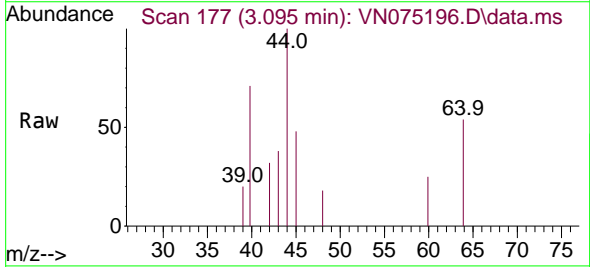
Instrument :
 MSVOA_N
 ClientSampleId :
 TP-2

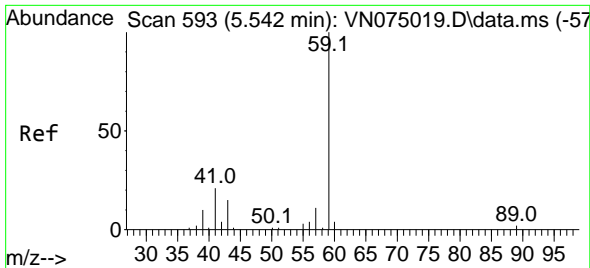
Tgt Ion:168 Resp: 98109
 Ion Ratio Lower Upper
 168 100
 99 66.7 51.6 77.4



#6
 Chloroethane
 Concen: 0.459 ug/l
 RT: 3.095 min Scan# 177
 Delta R.T. -0.000 min
 Lab File: VN075196.D
 Acq: 07 Nov 2022 18:34

Tgt Ion: 64 Resp: 637
 Ion Ratio Lower Upper
 64 100
 66 0.0 23.8 35.8#

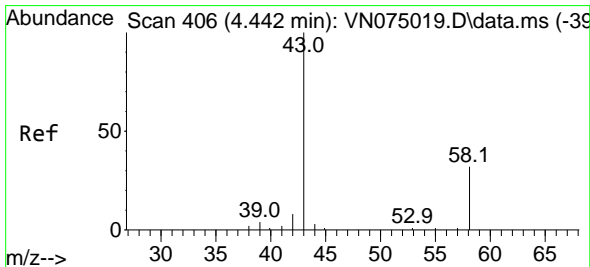
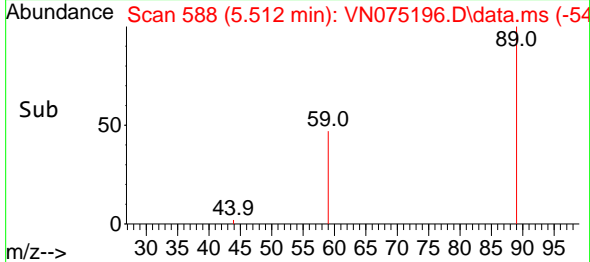
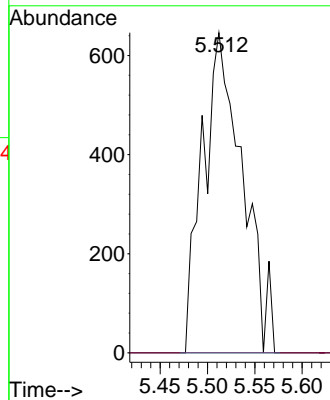
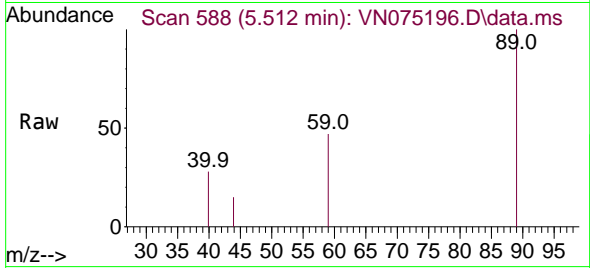




#11
 Tert butyl alcohol
 Concen: 6.157 ug/l
 RT: 5.512 min Scan# 511
 Delta R.T. -0.030 min
 Lab File: VN075196.D
 Acq: 07 Nov 2022 18:34

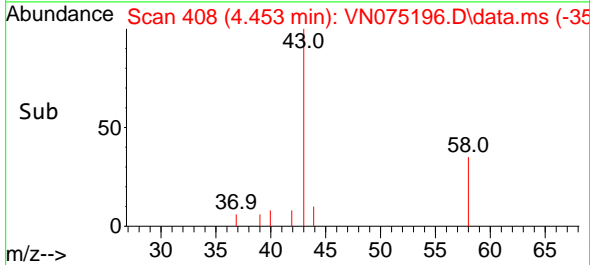
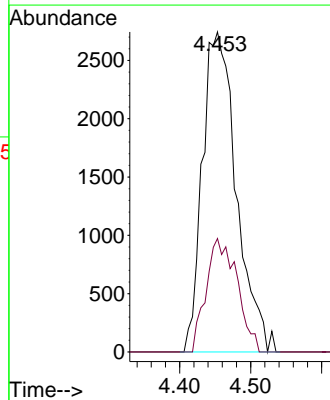
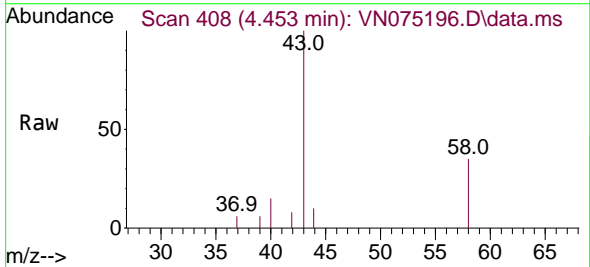
Instrument : MSVOA_N
 ClientSampleId : TP-2

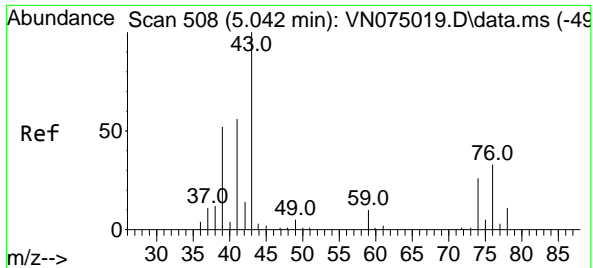
Tgt Ion: 59 Resp: 1898
 Ion Ratio Lower Upper
 59 100
 57 0.0 8.5 12.7#



#16
 Acetone
 Concen: 16.281 ug/l
 RT: 4.453 min Scan# 408
 Delta R.T. 0.011 min
 Lab File: VN075196.D
 Acq: 07 Nov 2022 18:34

Tgt Ion: 43 Resp: 9113
 Ion Ratio Lower Upper
 43 100
 58 35.5 25.5 38.3

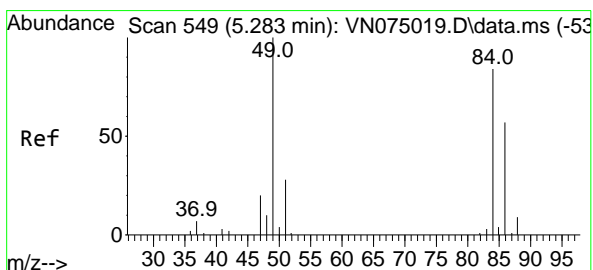
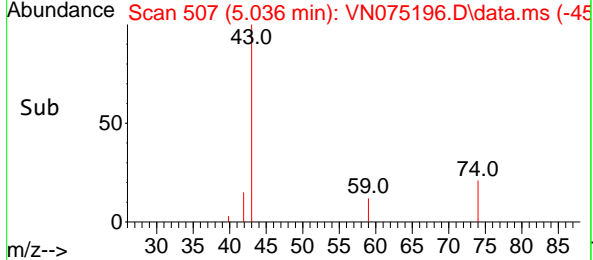
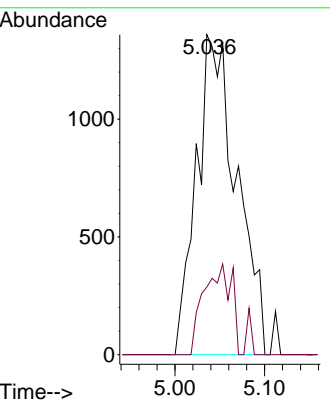
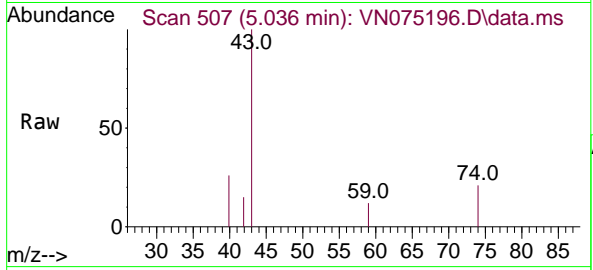




#18
 Methyl Acetate
 Concen: 2.320 ug/l
 RT: 5.036 min Scan# 507
 Delta R.T. -0.006 min
 Lab File: VN075196.D
 Acq: 07 Nov 2022 18:34

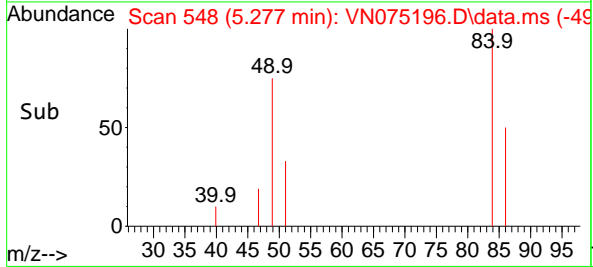
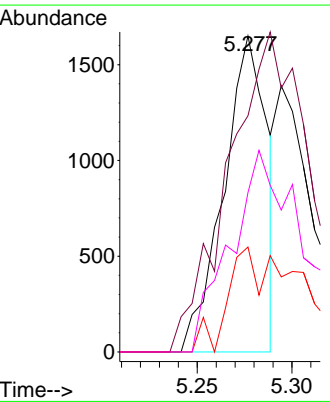
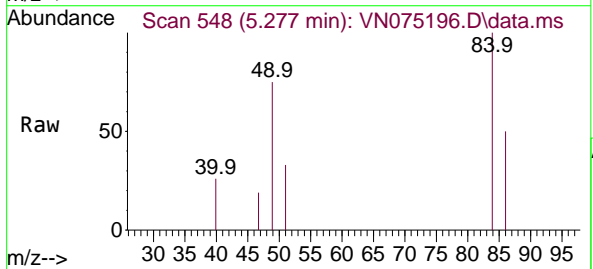
Instrument : MSVOA_N
 ClientSampleId : TP-2

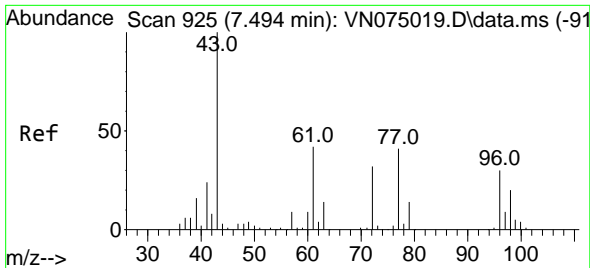
Tgt Ion: 43 Resp: 4242
 Ion Ratio Lower Upper
 43 100
 74 19.5 22.0 33.0#



#20
 Methylene Chloride
 Concen: 2.111 ug/l
 RT: 5.277 min Scan# 548
 Delta R.T. -0.006 min
 Lab File: VN075196.D
 Acq: 07 Nov 2022 18:34

Tgt Ion: 84 Resp: 2634
 Ion Ratio Lower Upper
 84 100
 49 74.7 94.9 142.3#
 51 33.2 26.8 40.2
 86 50.4 53.7 80.5#

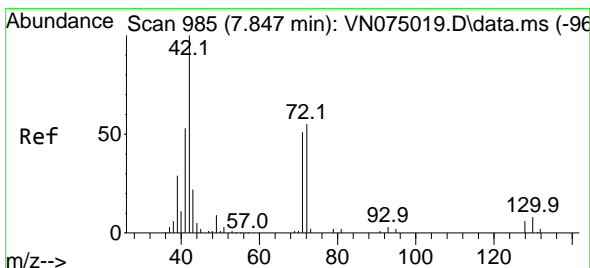
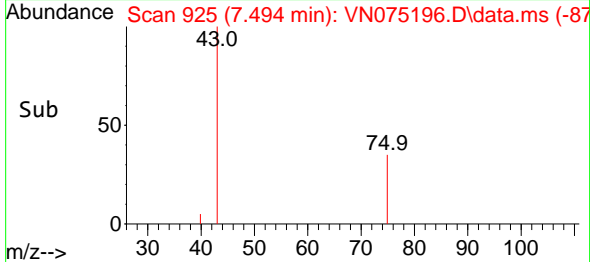
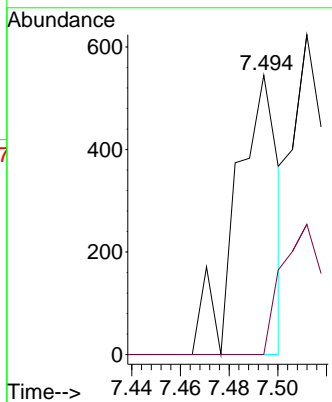
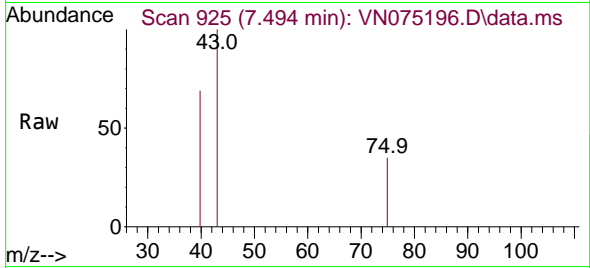




#25
 2-Butanone
 Concen: 0.738 ug/l
 RT: 7.494 min Scan# 911
 Delta R.T. 0.000 min
 Lab File: VN075196.D
 Acq: 07 Nov 2022 18:34

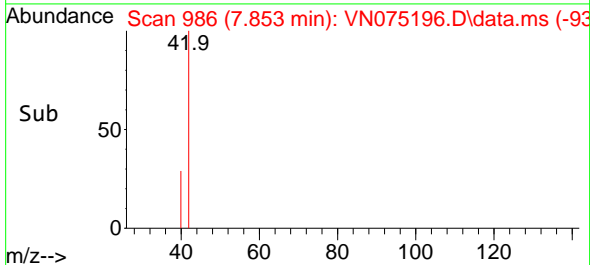
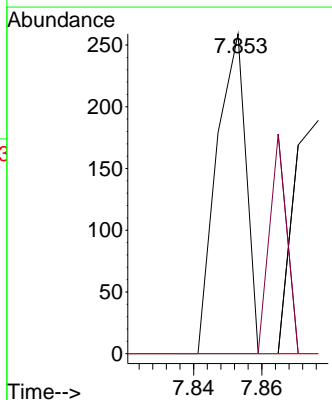
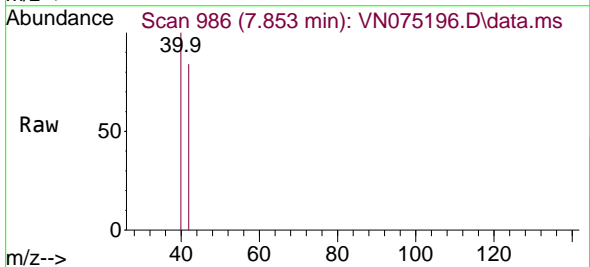
Instrument : MSVOA_N
 ClientSampleId : TP-2

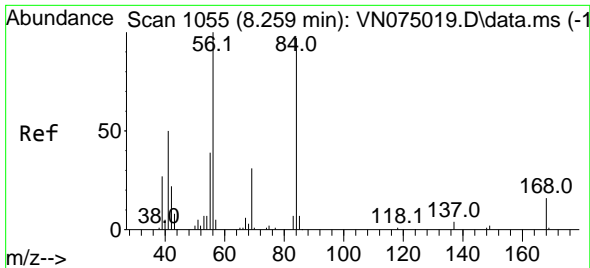
Tgt Ion: 43 Resp: 650
 Ion Ratio Lower Upper
 43 100
 72 0.0 25.5 38.3#



#29
 Tetrahydrofuran
 Concen: 0.272 ug/l
 RT: 7.853 min Scan# 986
 Delta R.T. 0.006 min
 Lab File: VN075196.D
 Acq: 07 Nov 2022 18:34

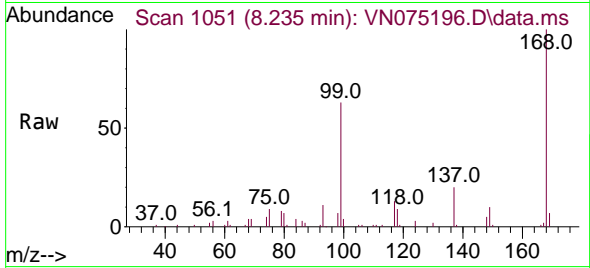
Tgt Ion: 42 Resp: 155
 Ion Ratio Lower Upper
 42 100
 72 0.0 43.0 64.6#
 71 0.0 39.9 59.9#



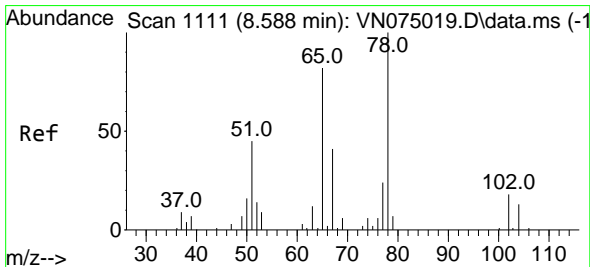
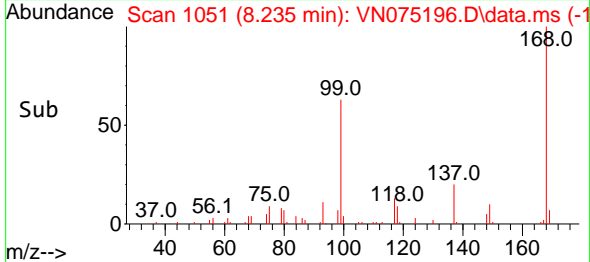
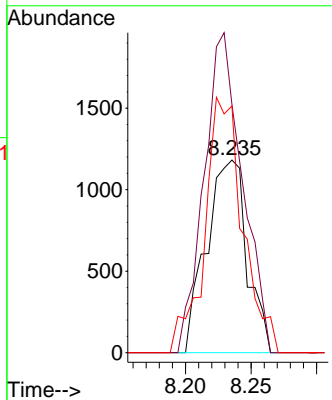


#31
 Cyclohexane
 Concen: 1.289 ug/l
 RT: 8.235 min Scan# 1051
 Delta R.T. -0.024 min
 Lab File: VN075196.D
 Acq: 07 Nov 2022 18:34

Instrument : MSVOA_N
 ClientSampleId : TP-2

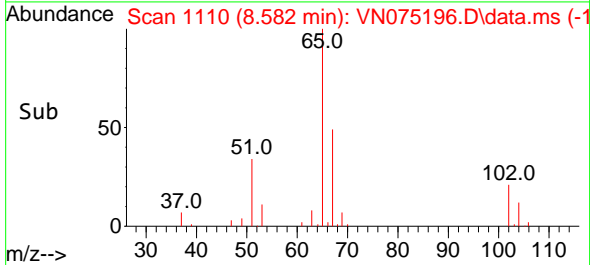
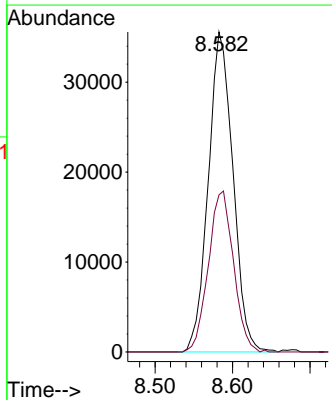
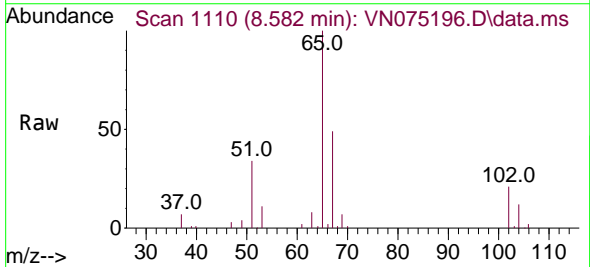


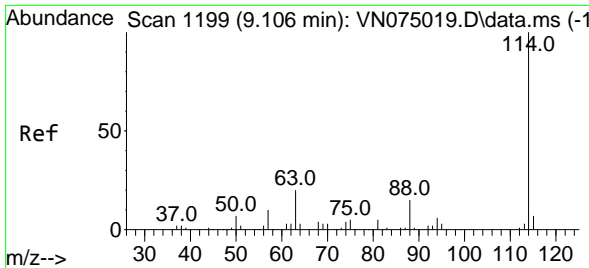
Tgt Ion: 56 Resp: 2535
 Ion Ratio Lower Upper
 56 100
 69 128.7 25.2 37.8#
 84 128.0 77.8 116.8#



#33
 1,2-Dichloroethane-d4
 Concen: 59.576 ug/l
 RT: 8.582 min Scan# 1110
 Delta R.T. -0.006 min
 Lab File: VN075196.D
 Acq: 07 Nov 2022 18:34

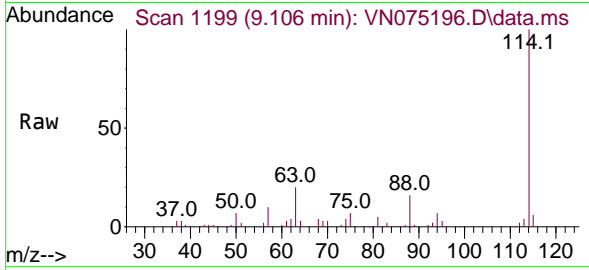
Tgt Ion: 65 Resp: 78753
 Ion Ratio Lower Upper
 65 100
 67 51.2 0.0 102.0



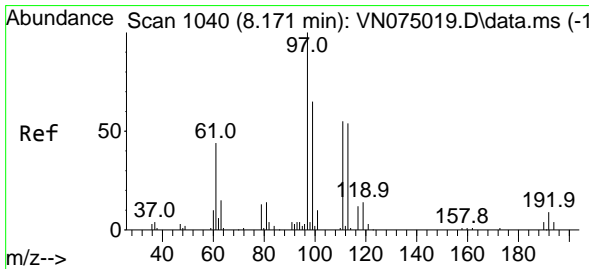
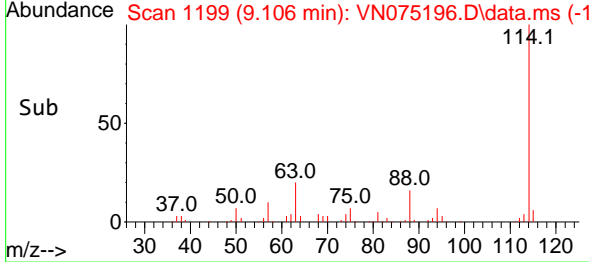
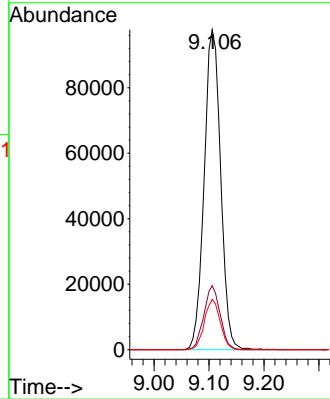


#34
 1,4-Difluorobenzene
 Concen: 50.000 ug/l
 RT: 9.106 min Scan# 1199
 Delta R.T. -0.000 min
 Lab File: VN075196.D
 Acq: 07 Nov 2022 18:34

Instrument : MSVOA_N
 ClientSampleId : TP-2

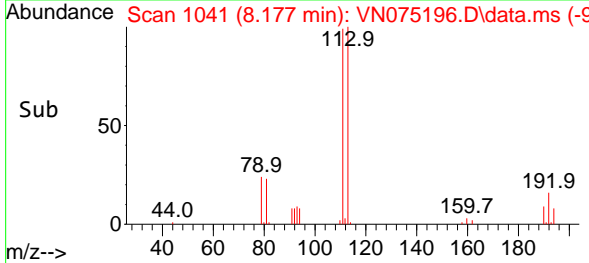
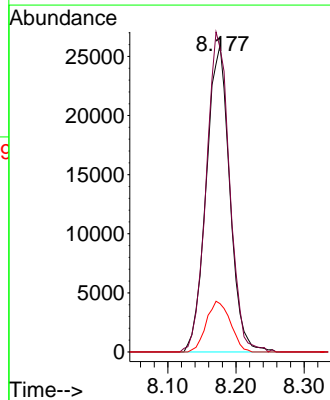
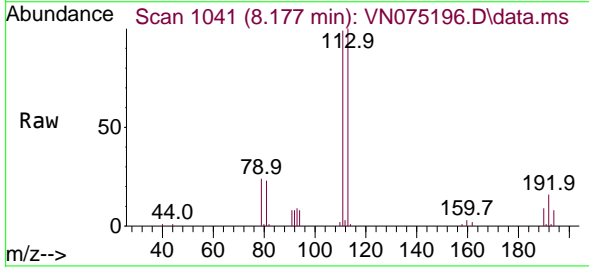


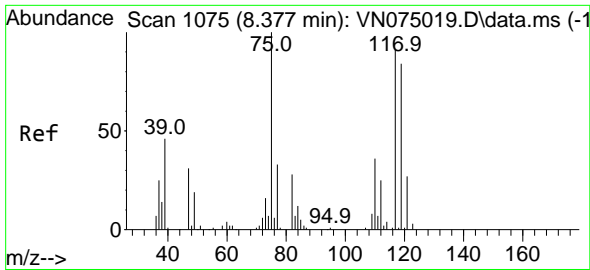
Tgt Ion:114 Resp: 203644
 Ion Ratio Lower Upper
 114 100
 63 20.0 0.0 39.6
 88 15.7 0.0 29.0



#35
 Dibromofluoromethane
 Concen: 52.089 ug/l
 RT: 8.177 min Scan# 1041
 Delta R.T. 0.006 min
 Lab File: VN075196.D
 Acq: 07 Nov 2022 18:34

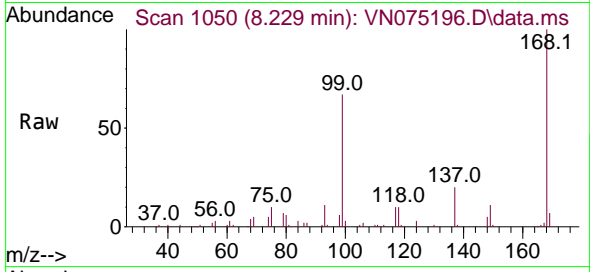
Tgt Ion:113 Resp: 62272
 Ion Ratio Lower Upper
 113 100
 111 103.5 80.5 120.7
 192 16.9 13.2 19.8





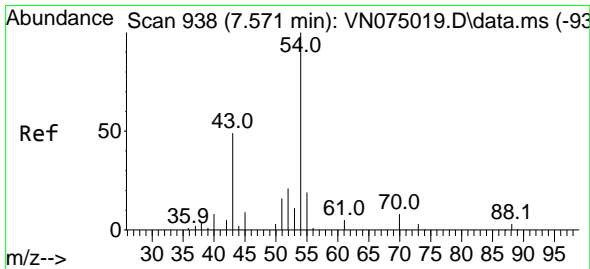
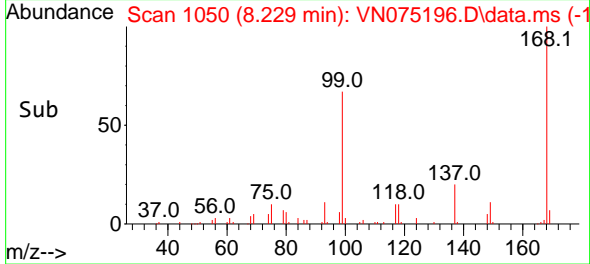
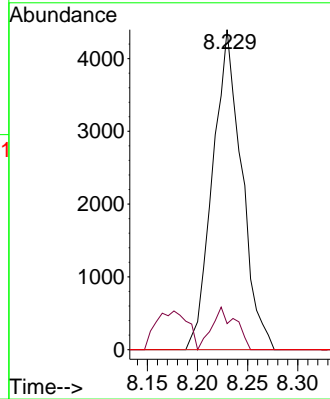
#36
 1,1-Dichloropropene
 Concen: 4.782 ug/l
 RT: 8.229 min Scan# 1075
 Delta R.T. -0.148 min
 Lab File: VN075196.D
 Acq: 07 Nov 2022 18:34

Instrument : MSVOA_N
 ClientSampleId : TP-2



Tgt Ion: 75 Resp: 8851

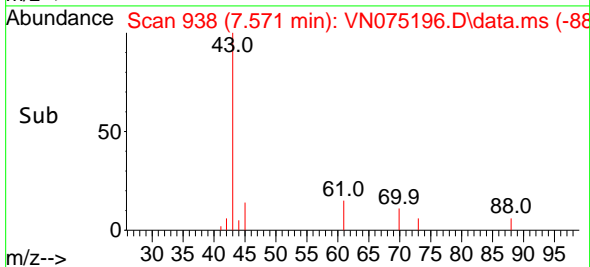
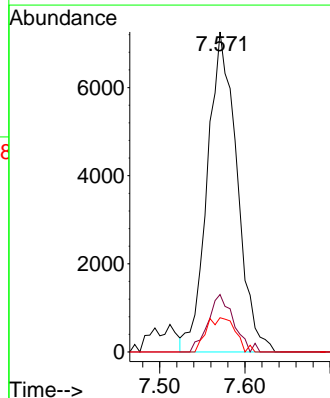
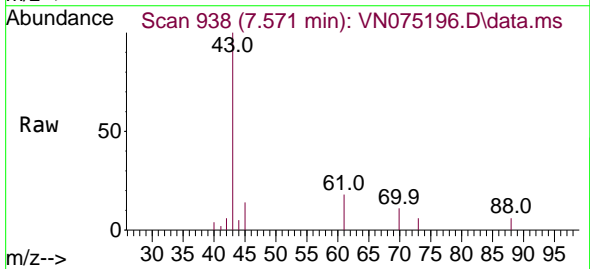
Ion	Ratio	Lower	Upper
75	100		
110	10.9	17.8	53.3#
77	0.0	24.6	37.0#

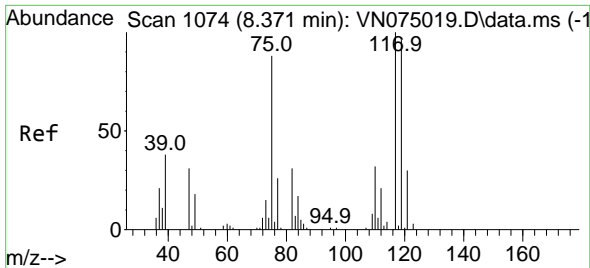


#37
 Ethyl Acetate
 Concen: 8.631 ug/l
 RT: 7.571 min Scan# 938
 Delta R.T. -0.000 min
 Lab File: VN075196.D
 Acq: 07 Nov 2022 18:34

Tgt Ion: 43 Resp: 17518

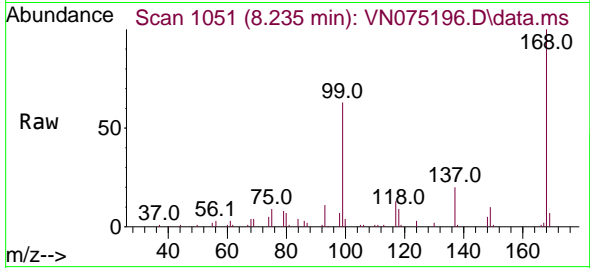
Ion	Ratio	Lower	Upper
43	100		
61	15.5	12.2	18.4
70	10.5	9.4	14.2



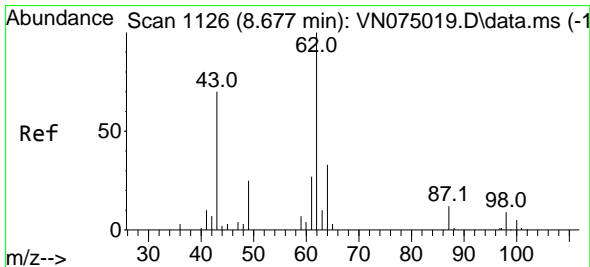
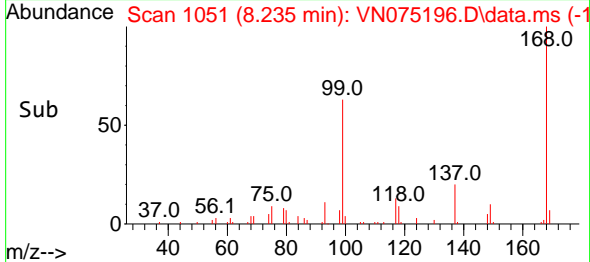
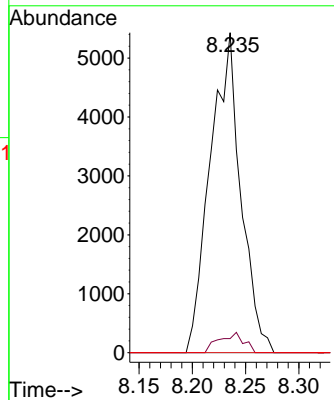


#38
 Carbon Tetrachloride
 Concen: 5.322 ug/l
 RT: 8.235 min Scan# 1074
 Delta R.T. -0.136 min
 Lab File: VN075196.D
 Acq: 07 Nov 2022 18:34

Instrument : MSVOA_N
 ClientSampleId : TP-2

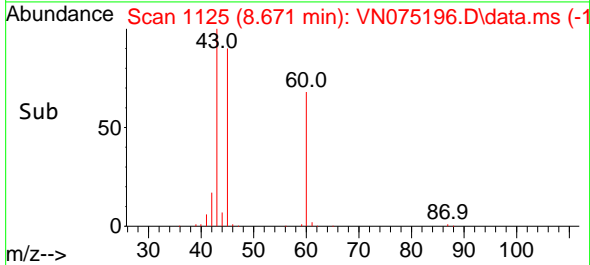
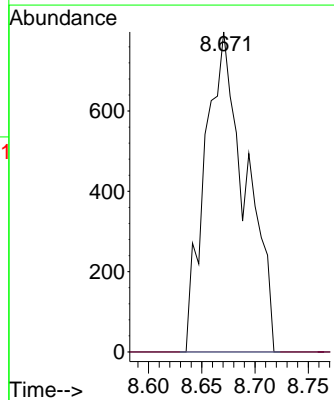
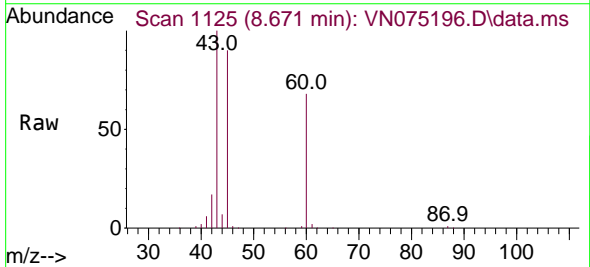


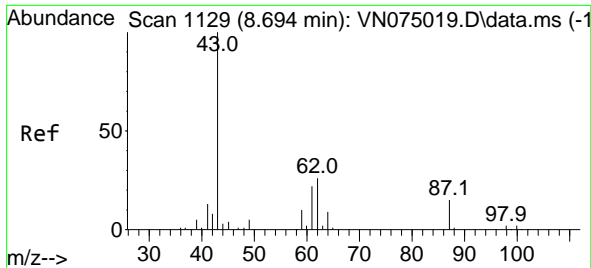
Tgt Ion:117 Resp: 10836
 Ion Ratio Lower Upper
 117 100
 119 4.4 76.7 115.1#
 121 0.0 23.9 35.9#



#42
 1,2-Dichloroethane
 Concen: 1.024 ug/l
 RT: 8.671 min Scan# 1125
 Delta R.T. -0.006 min
 Lab File: VN075196.D
 Acq: 07 Nov 2022 18:34

Tgt Ion: 62 Resp: 2112
 Ion Ratio Lower Upper
 62 100
 98 0.0 0.0 18.2

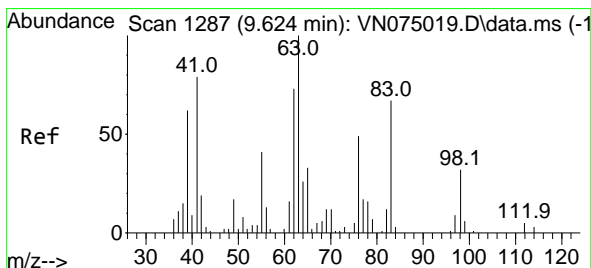
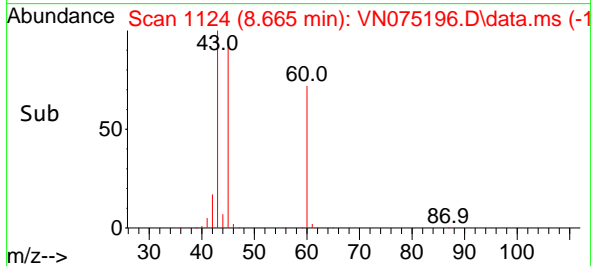
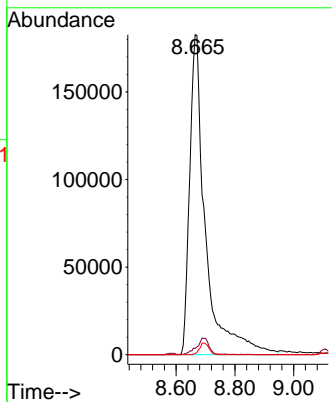
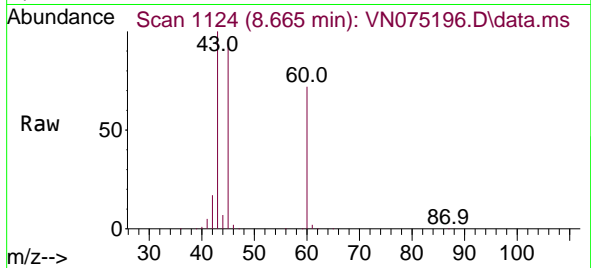




#43
 Isopropyl Acetate
 Concen: 216.412 ug/l
 RT: 8.665 min Scan# 1124
 Delta R.T. -0.029 min
 Lab File: VN075196.D
 Acq: 07 Nov 2022 18:34

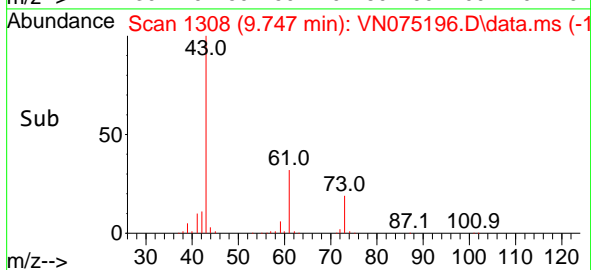
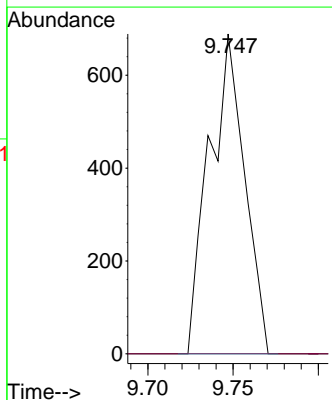
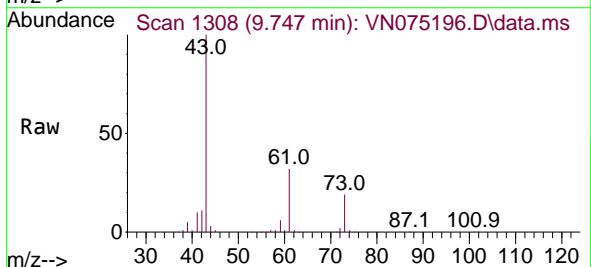
Instrument : MSVOA_N
 ClientSampleId : TP-2

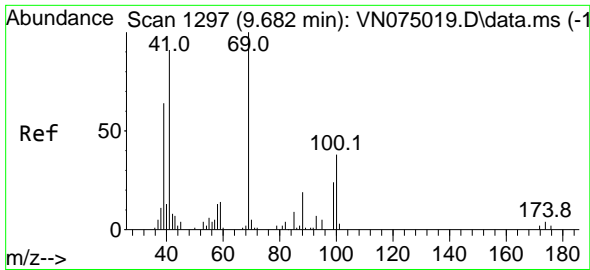
Tgt Ion: 43 Resp: 681363
 Ion Ratio Lower Upper
 43 100
 61 0.0 22.4 33.6#
 87 0.0 12.5 18.7#



#45
 1,2-Dichloropropane
 Concen: 0.740 ug/l
 RT: 9.747 min Scan# 1308
 Delta R.T. 0.123 min
 Lab File: VN075196.D
 Acq: 07 Nov 2022 18:34

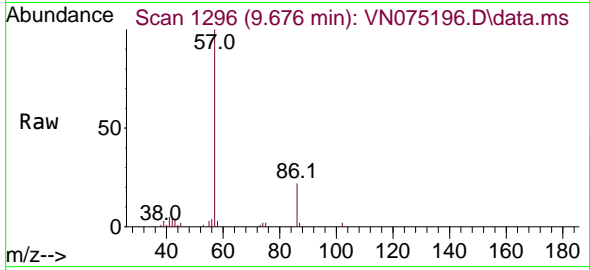
Tgt Ion: 63 Resp: 998
 Ion Ratio Lower Upper
 63 100
 65 0.0 26.1 39.1#



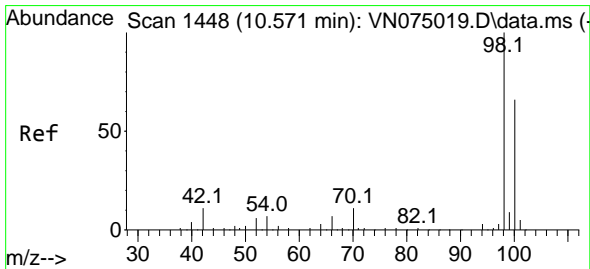
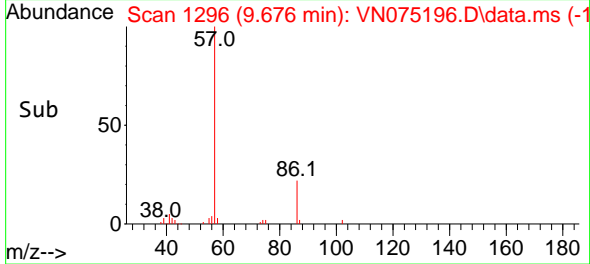
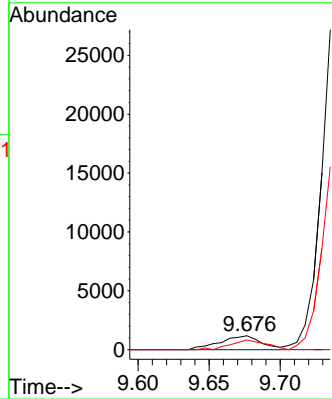


#48
 Methyl methacrylate
 Concen: 1.659 ug/l
 RT: 9.676 min Scan# 11
 Delta R.T. -0.006 min
 Lab File: VN075196.D
 Acq: 07 Nov 2022 18:34

Instrument :
 MSVOA_N
 ClientSampleId :
 TP-2

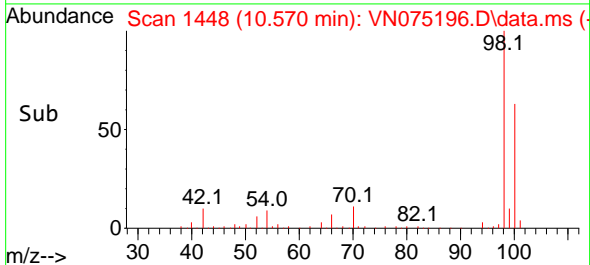
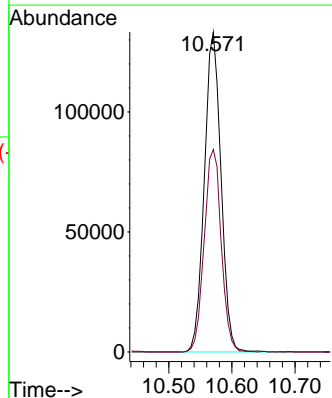
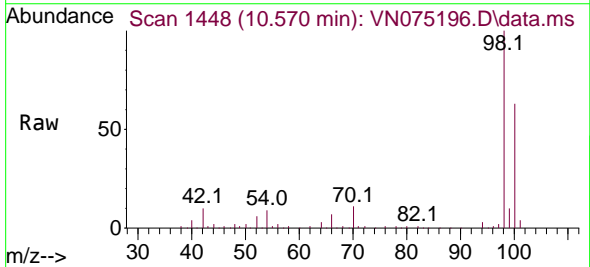


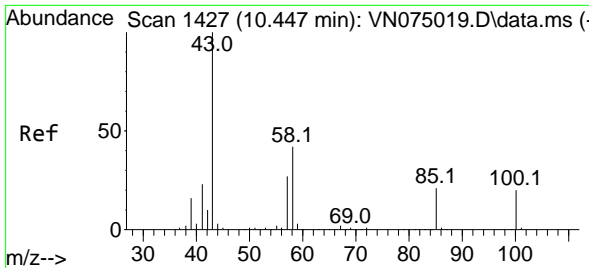
Tgt Ion: 41 Resp: 2396
 Ion Ratio Lower Upper
 41 100
 69 0.0 80.2 120.2#
 39 59.6 56.2 84.2



#50
 Toluene-d8
 Concen: 52.586 ug/l
 RT: 10.570 min Scan# 1448
 Delta R.T. -0.001 min
 Lab File: VN075196.D
 Acq: 07 Nov 2022 18:34

Tgt Ion: 98 Resp: 243904
 Ion Ratio Lower Upper
 98 100
 100 64.8 53.0 79.6

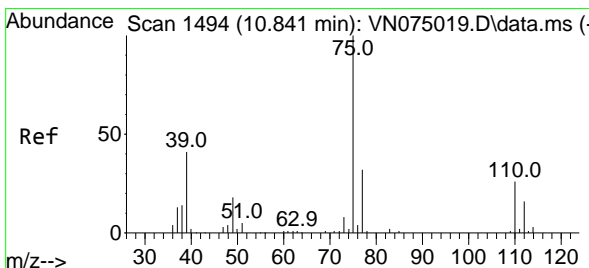
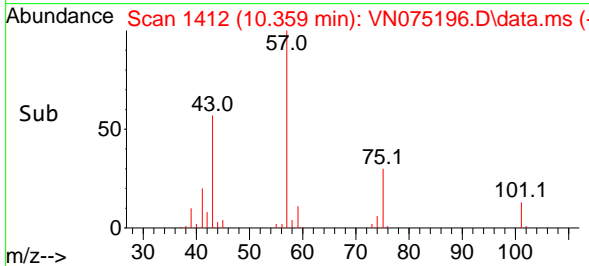
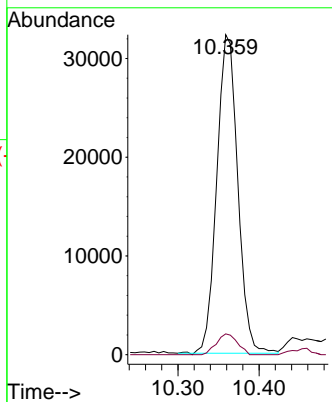
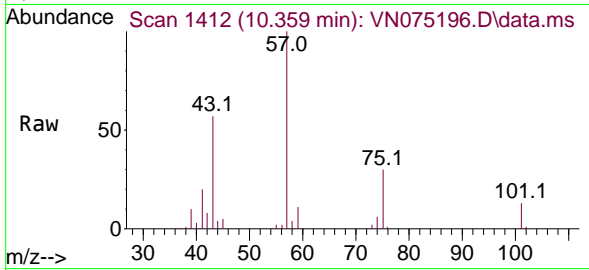




#51
 4-Methyl-2-Pentanone
 Concen: 28.492 ug/l
 RT: 10.359 min Scan# 1412
 Delta R.T. -0.088 min
 Lab File: VN075196.D
 Acq: 07 Nov 2022 18:34

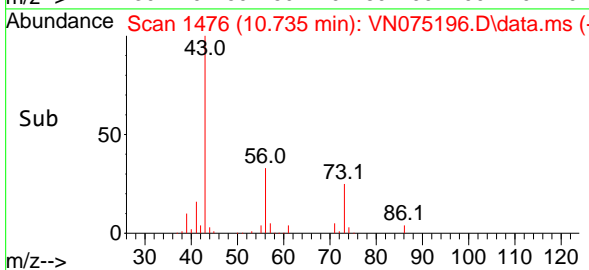
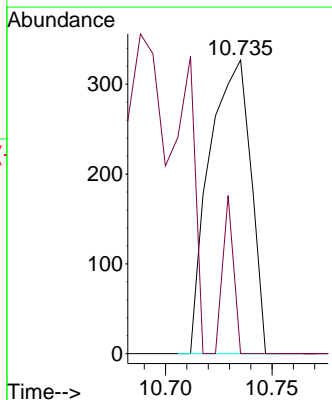
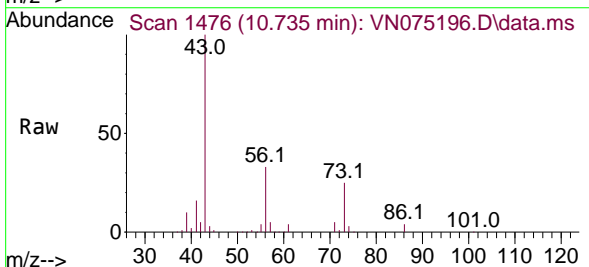
Instrument : MSVOA_N
 ClientSampleId : TP-2

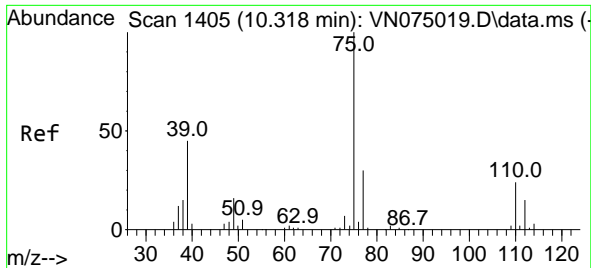
Tgt Ion: 43 Resp: 57887
 Ion Ratio Lower Upper
 43 100
 58 6.5 33.6 50.4#



#53
 t-1,3-Dichloropropene
 Concen: 0.205 ug/l
 RT: 10.735 min Scan# 1476
 Delta R.T. -0.106 min
 Lab File: VN075196.D
 Acq: 07 Nov 2022 18:34

Tgt Ion: 75 Resp: 441
 Ion Ratio Lower Upper
 75 100
 77 0.0 25.4 38.2#



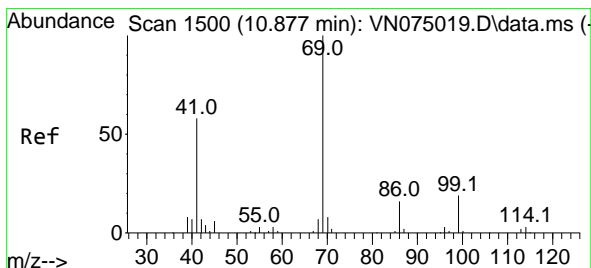
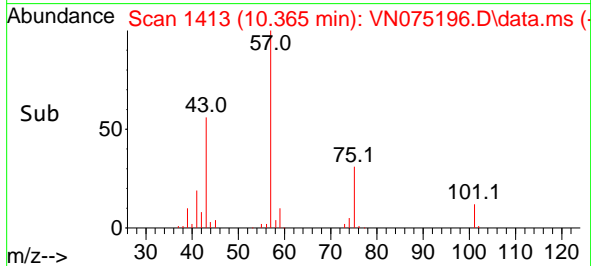
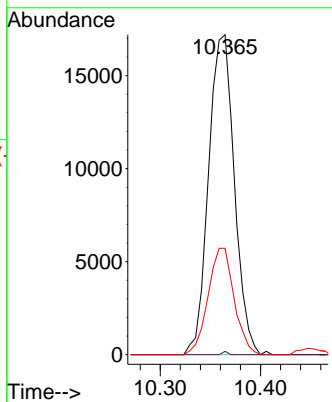
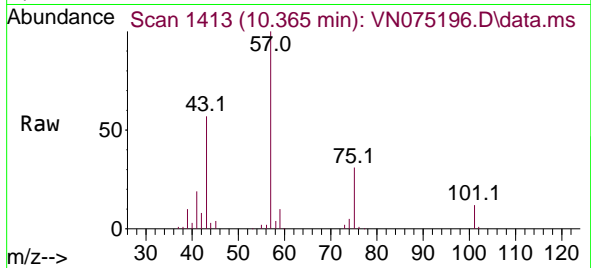


#54
 cis-1,3-Dichloropropene
 Concen: 13.469 ug/l
 RT: 10.365 min Scan# 1413
 Delta R.T. 0.047 min
 Lab File: VN075196.D
 Acq: 07 Nov 2022 18:34

Instrument : MSVOA_N
 ClientSampleId : TP-2

Tgt Ion: 75 Resp: 30681

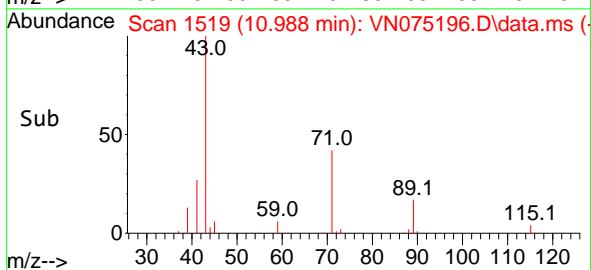
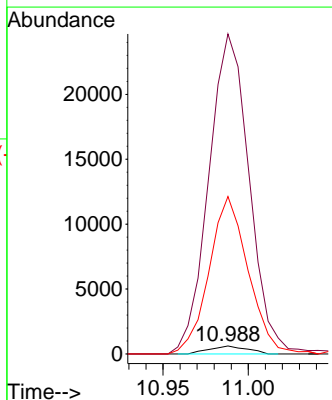
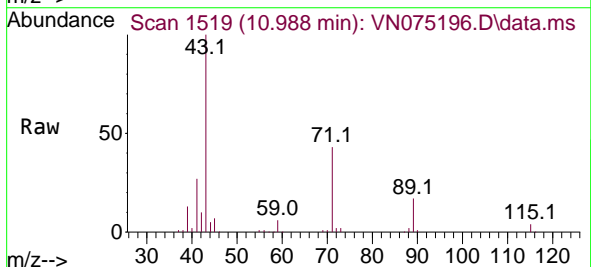
Ion	Ratio	Lower	Upper
75	100		
77	1.1	23.7	35.5#
39	33.2	35.8	53.6#

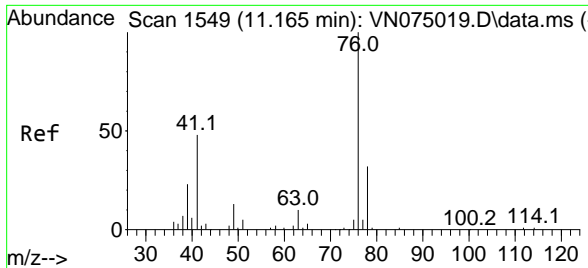


#56
 Ethyl methacrylate
 Concen: 0.417 ug/l
 RT: 10.988 min Scan# 1519
 Delta R.T. 0.111 min
 Lab File: VN075196.D
 Acq: 07 Nov 2022 18:34

Tgt Ion: 69 Resp: 955

Ion	Ratio	Lower	Upper
69	100		
41	4292.8	45.6	68.4#
39	2030.2	28.5	42.7#

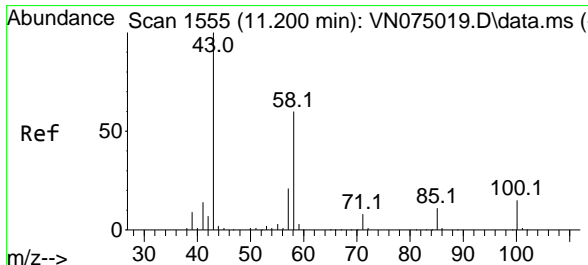
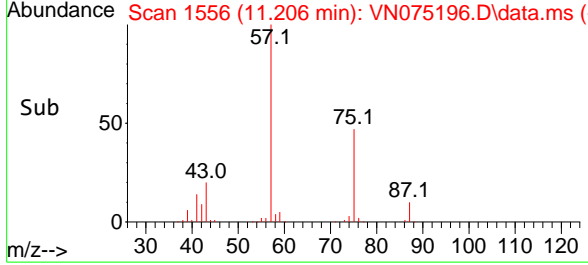
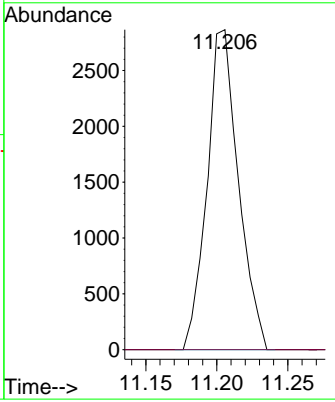
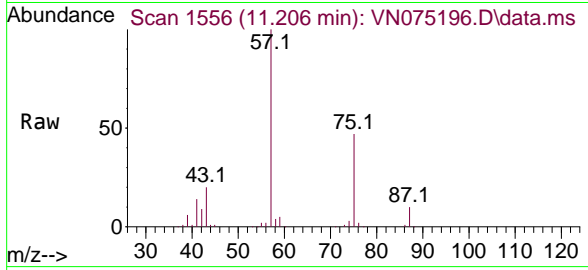




#57
 1,3-Dichloropropane
 Concen: 1.761 ug/l
 RT: 11.206 min Scan# 1556
 Delta R.T. 0.041 min
 Lab File: VN075196.D
 Acq: 07 Nov 2022 18:34

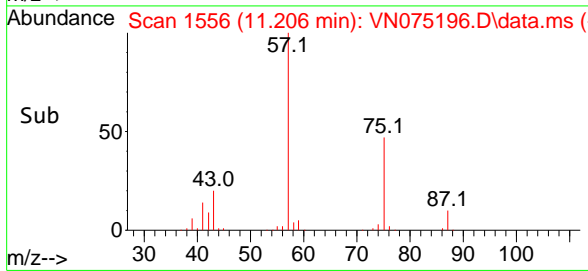
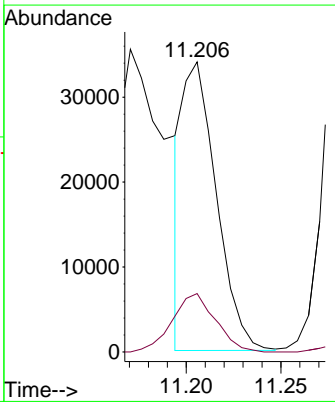
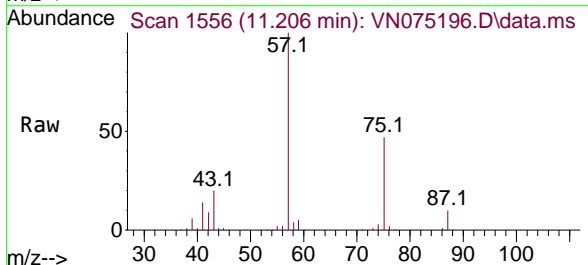
Instrument : MSVOA_N
 ClientSampleId : TP-2

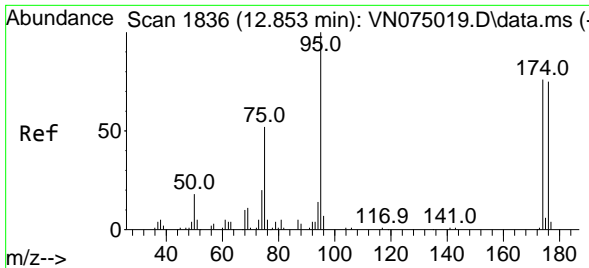
Tgt Ion: 76 Resp: 4406
 Ion Ratio Lower Upper
 76 100
 78 0.0 25.8 38.6#



#59
 2-Hexanone
 Concen: 27.216 ug/l
 RT: 11.206 min Scan# 1556
 Delta R.T. 0.006 min
 Lab File: VN075196.D
 Acq: 07 Nov 2022 18:34

Tgt Ion: 43 Resp: 41967
 Ion Ratio Lower Upper
 43 100
 58 26.1 29.6 88.8#

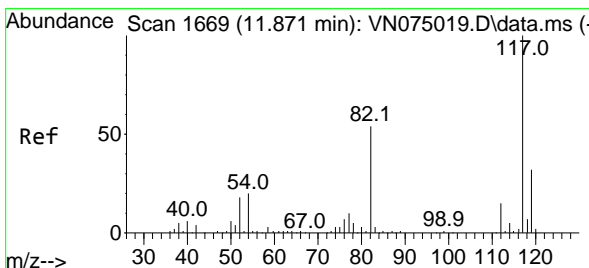
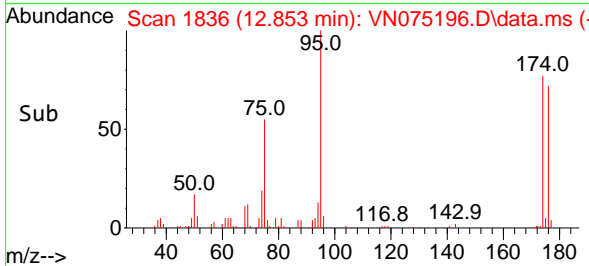
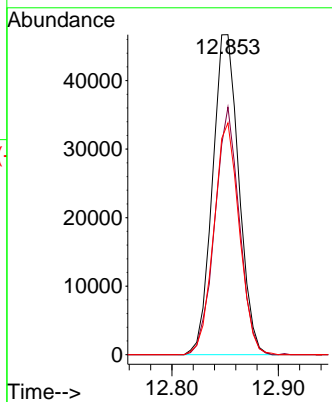
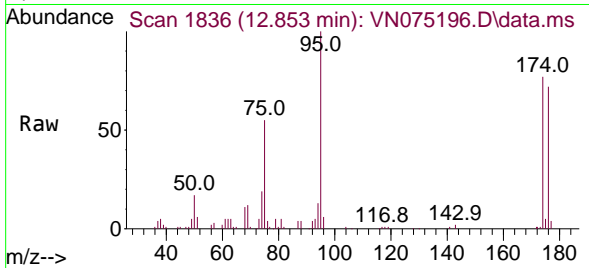




#62
 4-Bromofluorobenzene
 Concen: 49.169 ug/l
 RT: 12.853 min Scan# 1836
 Delta R.T. -0.000 min
 Lab File: VN075196.D
 Acq: 07 Nov 2022 18:34

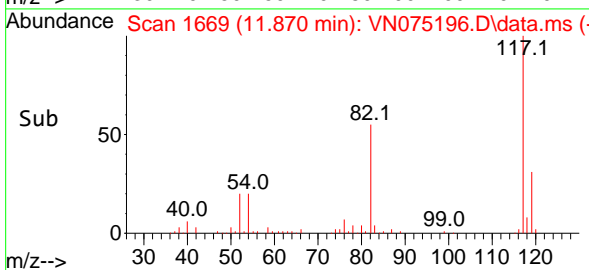
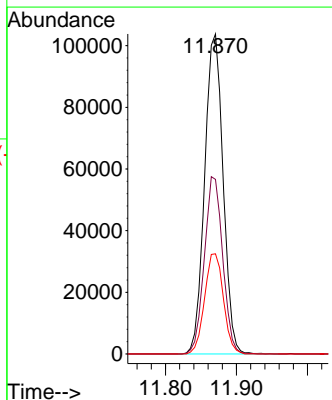
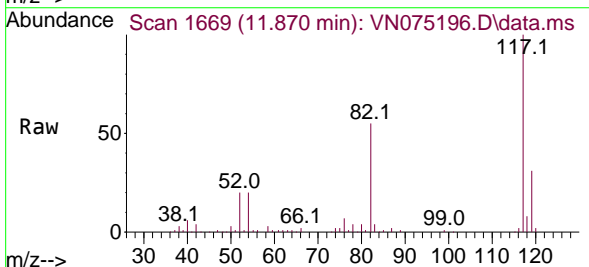
Instrument : MSVOA_N
 ClientSampleId : TP-2

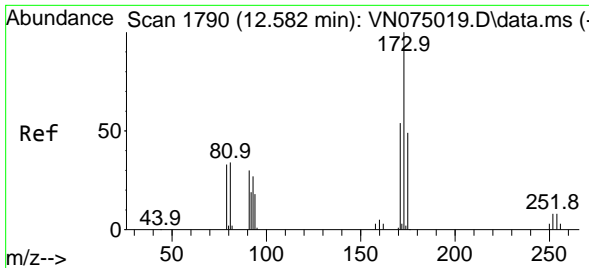
Tgt Ion	Resp	Lower	Upper
95	80112	100	
174	71.9	0.0	147.4
176	70.2	0.0	142.2



#63
 Chlorobenzene-d5
 Concen: 50.000 ug/l
 RT: 11.870 min Scan# 1669
 Delta R.T. -0.001 min
 Lab File: VN075196.D
 Acq: 07 Nov 2022 18:34

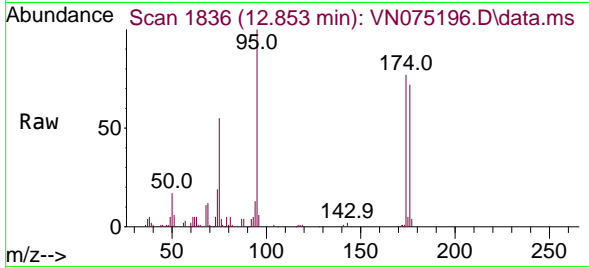
Tgt Ion	Resp	Lower	Upper
117	187747	100	
82	54.5	43.1	64.7
119	31.3	25.5	38.3



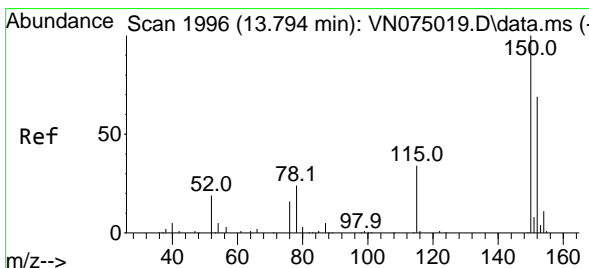
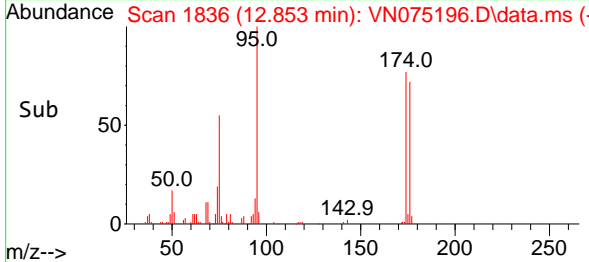
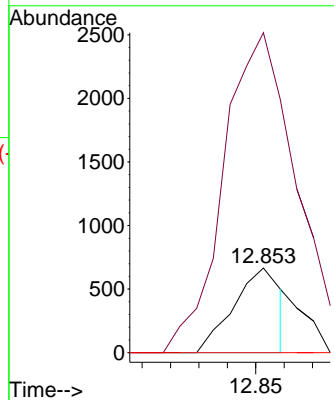


#71
 Bromoform
 Concen: 0.695 ug/l
 RT: 12.853 min Scan# 1836
 Delta R.T. 0.271 min
 Lab File: VN075196.D
 Acq: 07 Nov 2022 18:34

Instrument :
 MSVOA_N
 ClientSampleId :
 TP-2

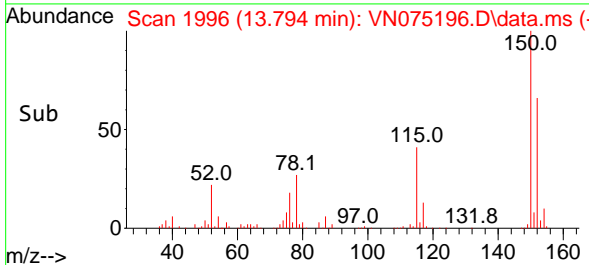
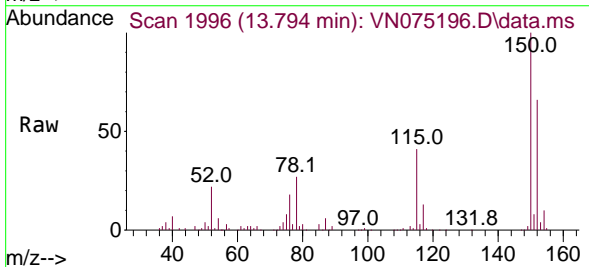
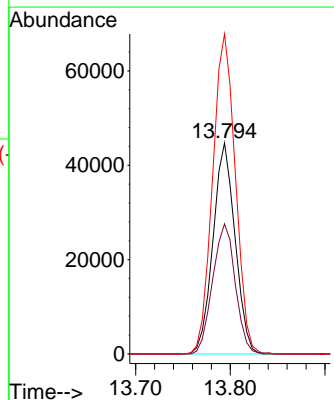


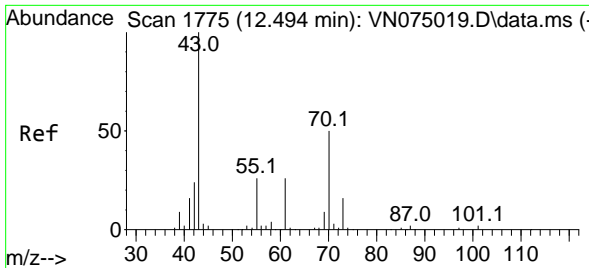
Tgt Ion:173 Resp: 773
 Ion Ratio Lower Upper
 173 100
 175 457.3 24.6 74.0#
 254 0.0 0.0 0.0



#72
 1,4-Dichlorobenzene-d4
 Concen: 50.000 ug/l
 RT: 13.794 min Scan# 1996
 Delta R.T. -0.000 min
 Lab File: VN075196.D
 Acq: 07 Nov 2022 18:34

Tgt Ion:152 Resp: 72511
 Ion Ratio Lower Upper
 152 100
 115 63.1 30.2 90.6
 150 156.0 0.0 348.4

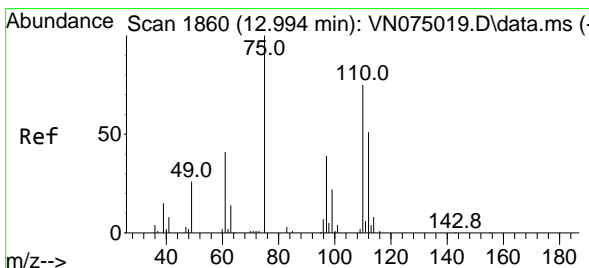
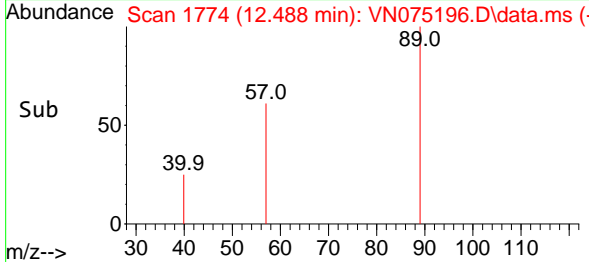
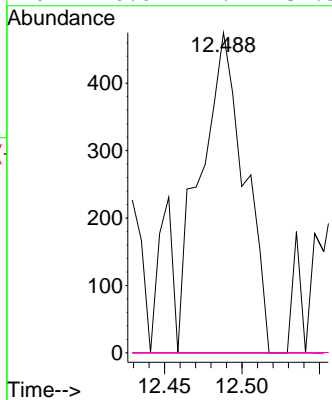
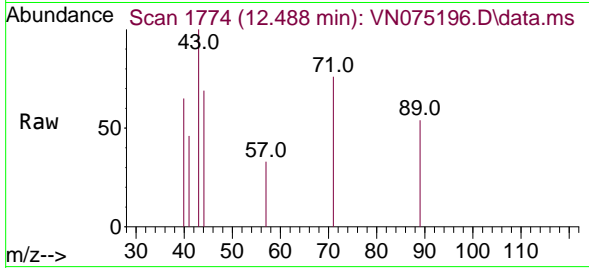




#74
 N-amy1 acetate
 Concen: 0.437 ug/l
 RT: 12.488 min Scan# 1
 Delta R.T. -0.006 min
 Lab File: VN075196.D
 Acq: 07 Nov 2022 18:34

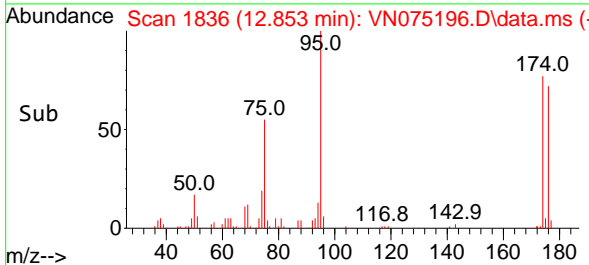
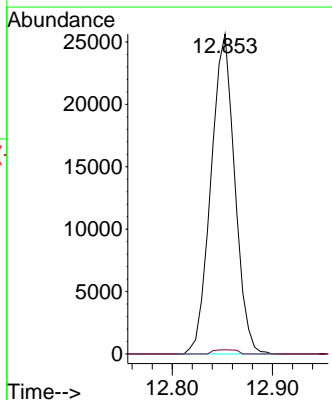
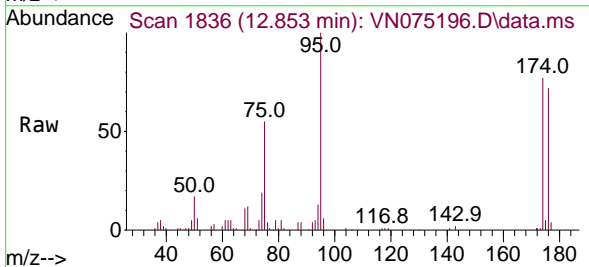
Instrument :
 MSVOA_N
 ClientSampleId :
 TP-2

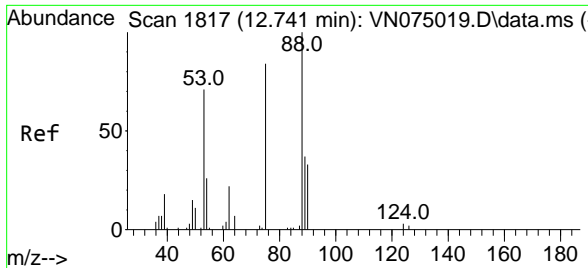
Tgt Ion	Resp	Lower	Upper
43	100		
70	0.0	39.8	59.8#
55	0.0	19.9	29.9#
61	0.0	21.7	32.5#



#76
 1,2,3-Trichloropropane
 Concen: 27.450 ug/l
 RT: 12.853 min Scan# 1836
 Delta R.T. -0.141 min
 Lab File: VN075196.D
 Acq: 07 Nov 2022 18:34

Tgt Ion	Resp	Lower	Upper
75	100		
77	1.3	75.6	226.8#





#81
 trans-1,4-Dichloro-2-butene
 Concen: 70.464 ug/l
 RT: 12.853 min Scan# 1817
 Delta R.T. 0.112 min
 Lab File: VN075196.D
 Acq: 07 Nov 2022 18:34

Instrument :
 MSVOA_N
 ClientSampleId :
 TP-2

Tgt Ion: 75 Resp: 42262

Ion	Ratio	Lower	Upper
75	100		
53	0.0	78.5	117.7#
89	0.0	37.7	56.5#

