

Data Path : Z:\voasrv\HPCHEM1\MSVOA_N\Data\VN110722\
 Data File : VN075198.D
 Acq On : 07 Nov 2022 19:23
 Operator : JC\MD
 Sample : N5491-11
 Misc : 5.0mL/MSVOA_N/WATER
 ALS Vial : 17 Sample Multiplier: 1

Instrument :
 MSVOA_N
 ClientSampleId :
 TP-4

Quant Time: Nov 08 01:13:40 2022
 Quant Method : Z:\voasrv\HPCHEM1\MSVOA_N\methods\82N102622W.M
 Quant Title : SW846 8260
 QLast Update : Thu Oct 27 09:48:49 2022
 Response via : Initial Calibration

Manual Integrations
 APPROVED

Reviewed By :John Carlone 11/08/2022
 Supervised By :Mahesh Dadoda 11/08/2022

Compound	R.T.	QIon	Response	Conc	Units	Dev(Min)

Internal Standards						
1) Pentafluorobenzene	8.230	168	85253	50.000	ug/l	0.00
34) 1,4-Difluorobenzene	9.106	114	177195	50.000	ug/l	0.00
63) Chlorobenzene-d5	11.871	117	164652	50.000	ug/l	0.00
72) 1,4-Dichlorobenzene-d4	13.794	152	62198	50.000	ug/l	0.00
System Monitoring Compounds						
33) 1,2-Dichloroethane-d4	8.583	65	70203	61.116	ug/l	0.00
Spiked Amount	50.000	Range 74 - 125	Recovery	=	122.240%	
35) Dibromofluoromethane	8.171	113	55348	53.208	ug/l	0.00
Spiked Amount	50.000	Range 75 - 124	Recovery	=	106.420%	
50) Toluene-d8	10.571	98	211853	52.494	ug/l	0.00
Spiked Amount	50.000	Range 86 - 113	Recovery	=	104.980%	
62) 4-Bromofluorobenzene	12.853	95	68995	48.667	ug/l	0.00
Spiked Amount	50.000	Range 83 - 123	Recovery	=	97.340%	
Target Compounds						
						Qvalue
16) Acetone	4.448	43	11419	23.477	ug/l #	88
18) Methyl Acetate	5.036	43	5575	3.509	ug/l	94
20) Methylene Chloride	5.289	84	4932	4.548	ug/l #	79
37) Ethyl Acetate	7.571	43	17342	9.819	ug/l	98
43) Isopropyl Acetate	8.683	43	139360m	50.870	ug/l	

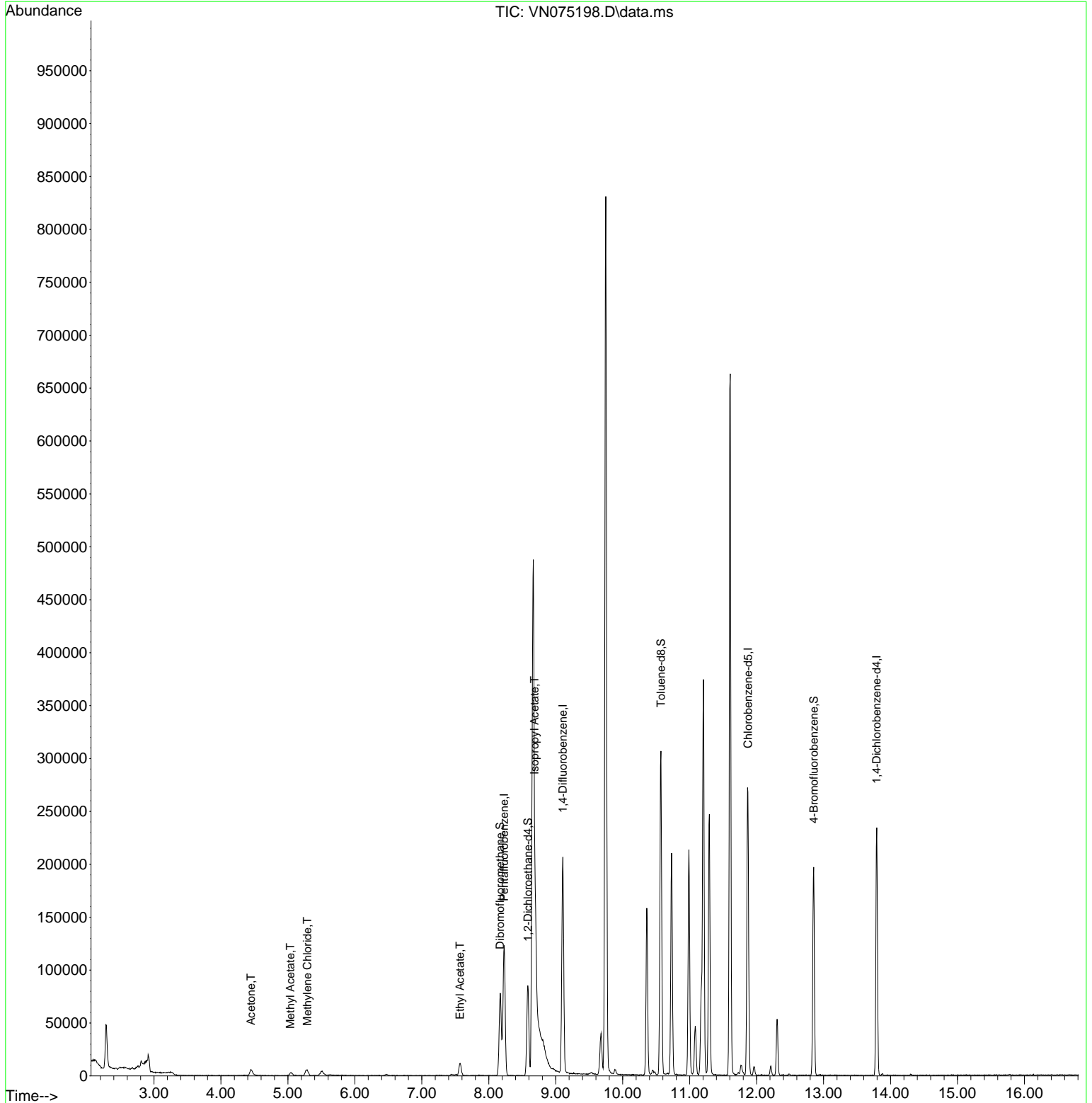
(#) = qualifier out of range (m) = manual integration (+) = signals summed

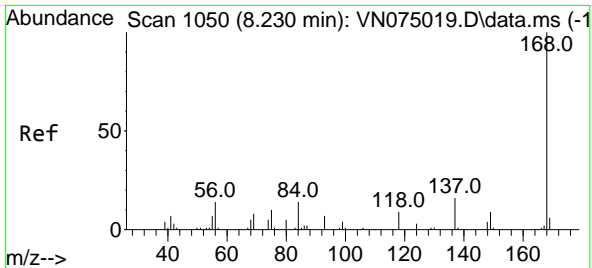
Data Path : Z:\voasrv\HPCHEM1\MSVOA_N\Data\VN110722\
 Data File : VN075198.D
 Acq On : 07 Nov 2022 19:23
 Operator : JC\MD
 Sample : N5491-11
 Misc : 5.0mL/MSVOA_N/WATER
 ALS Vial : 17 Sample Multiplier: 1

Instrument :
 MSVOA_N
ClientSampleId :
 TP-4

Quant Time: Nov 08 01:13:40 2022
 Quant Method : Z:\voasrv\HPCHEM1\MSVOA_N\methods\82N102622W.M
 Quant Title : SW846 8260
 QLast Update : Thu Oct 27 09:48:49 2022
 Response via : Initial Calibration

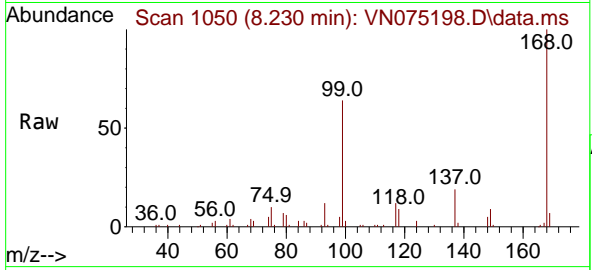
Manual Integrations
APPROVED
 Reviewed By :John Carlone 11/08/2022
 Supervised By :Mahesh Dadoda 11/08/2022





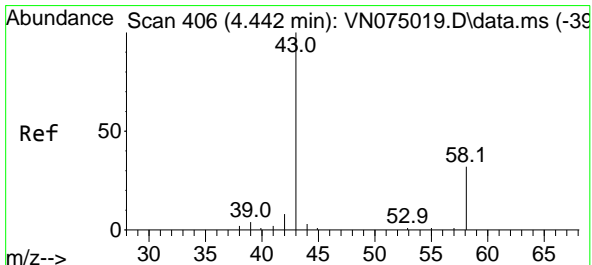
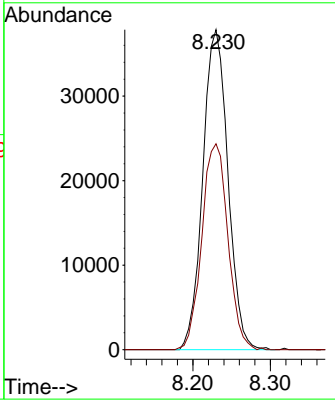
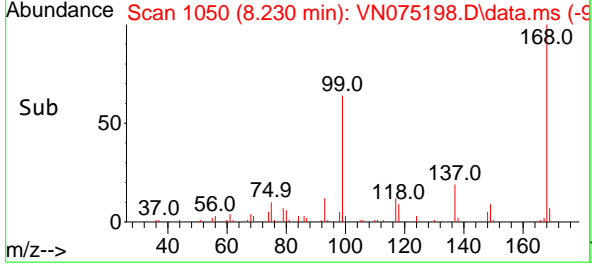
#1
 Pentafluorobenzene
 Concen: 50.000 ug/l
 RT: 8.230 min Scan# 1050
 Delta R.T. -0.000 min
 Lab File: VN075198.D
 Acq: 07 Nov 2022 19:23

Instrument : MSVOA_N
 ClientSampleId : TP-4

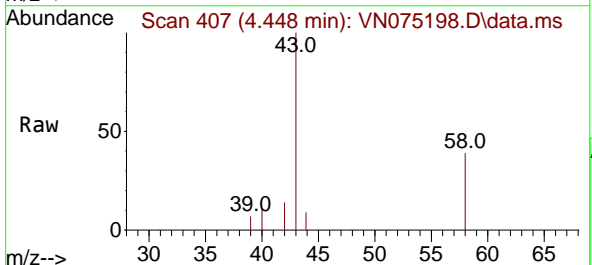


Tgt Ion:168 Resp: 8525
 Ion Ratio Lower Upper
 168 100
 99 64.3 51.6 77.4

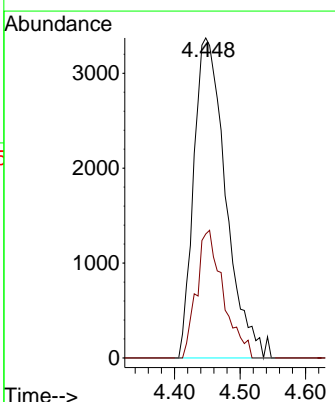
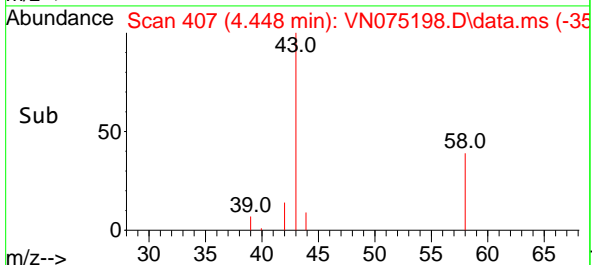
Manual Integrations
APPROVED
 Reviewed By :John Carlone 11/08/2022
 Supervised By :Mahesh Dadoda 11/08/2022

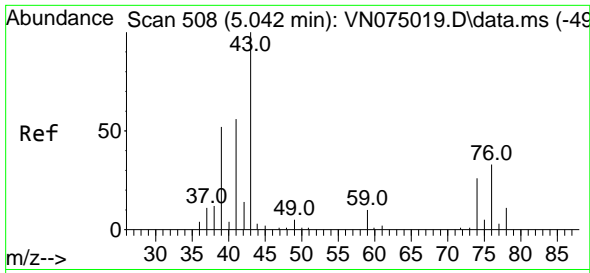


#16
 Acetone
 Concen: 23.477 ug/l
 RT: 4.448 min Scan# 407
 Delta R.T. 0.006 min
 Lab File: VN075198.D
 Acq: 07 Nov 2022 19:23



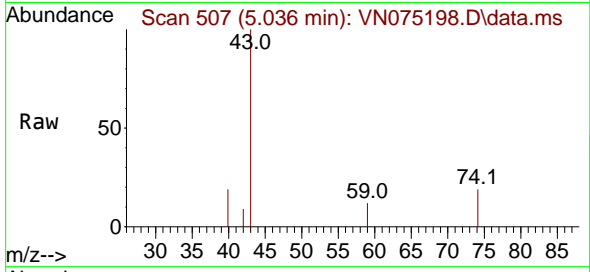
Tgt Ion: 43 Resp: 11419
 Ion Ratio Lower Upper
 43 100
 58 38.8 25.5 38.3#





#18
 Methyl Acetate
 Concen: 3.509 ug/l
 RT: 5.036 min Scan# 507
 Delta R.T. -0.006 min
 Lab File: VN075198.D
 Acq: 07 Nov 2022 19:23

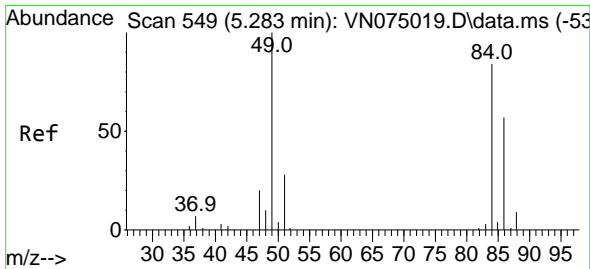
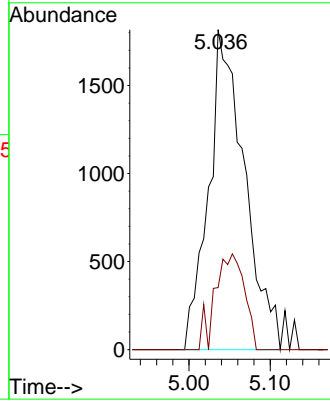
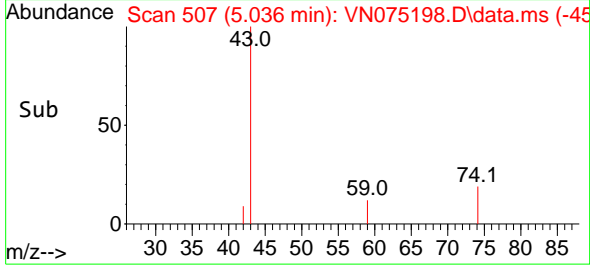
Instrument : MSVOA_N
 ClientSampleId : TP-4



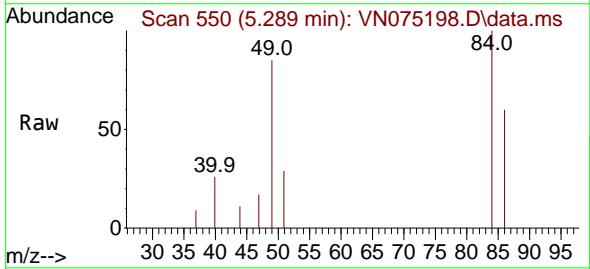
Tgt Ion: 43 Resp: 557
 Ion Ratio Lower Upper
 43 100
 74 24.5 22.0 33.0

Manual Integrations
APPROVED

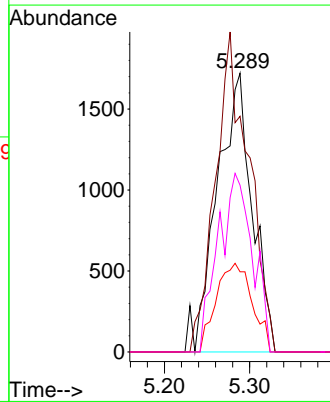
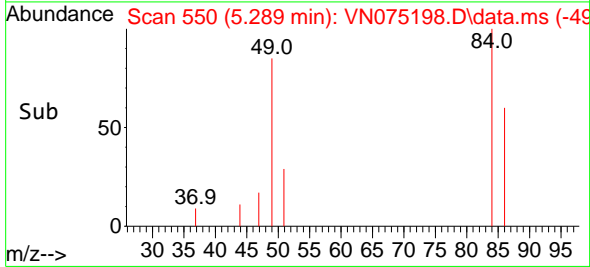
Reviewed By :John Carlone 11/08/2022
 Supervised By :Mahesh Dadoda 11/08/2022

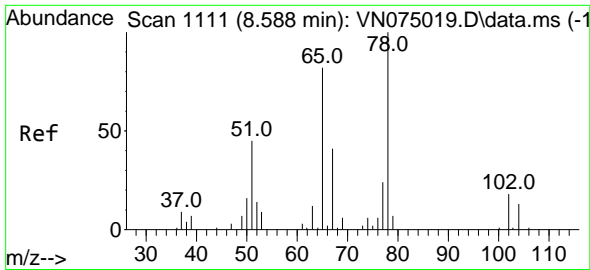


#20
 Methylene Chloride
 Concen: 4.548 ug/l
 RT: 5.289 min Scan# 550
 Delta R.T. 0.006 min
 Lab File: VN075198.D
 Acq: 07 Nov 2022 19:23



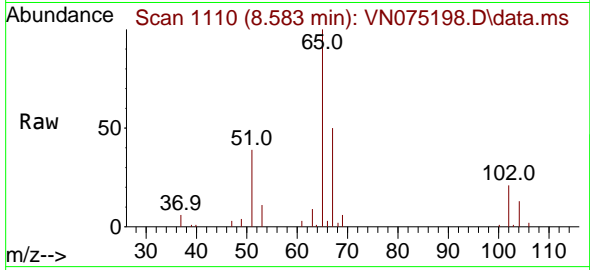
Tgt Ion: 84 Resp: 4932
 Ion Ratio Lower Upper
 84 100
 49 84.5 94.9 142.3#
 51 28.8 26.8 40.2
 86 59.8 53.7 80.5





#33
 1,2-Dichloroethane-d4
 Concen: 61.116 ug/l
 RT: 8.583 min Scan# 1111
 Delta R.T. -0.005 min
 Lab File: VN075198.D
 Acq: 07 Nov 2022 19:23

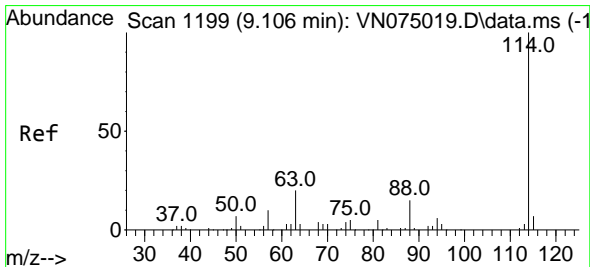
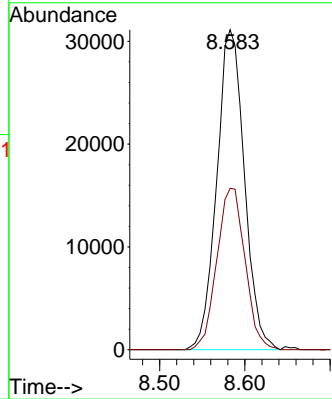
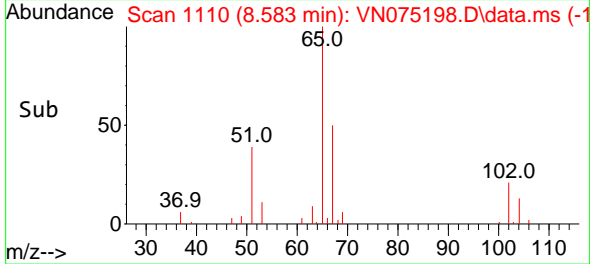
Instrument : MSVOA_N
 ClientSampleId : TP-4



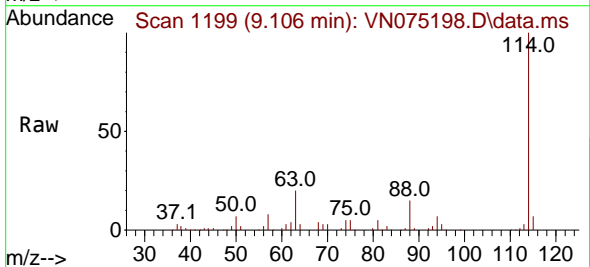
Tgt Ion: 65 Resp: 70200
 Ion Ratio Lower Upper
 65 100
 67 51.4 0.0 102.0

Manual Integrations
APPROVED

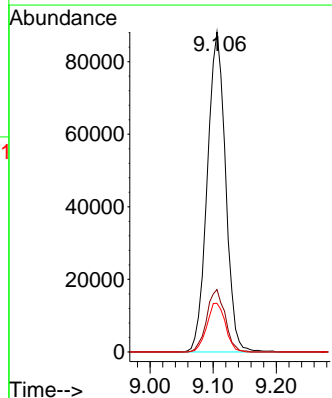
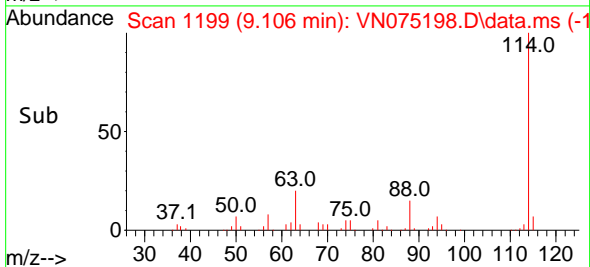
Reviewed By :John Carlone 11/08/2022
 Supervised By :Mahesh Dadoda 11/08/2022

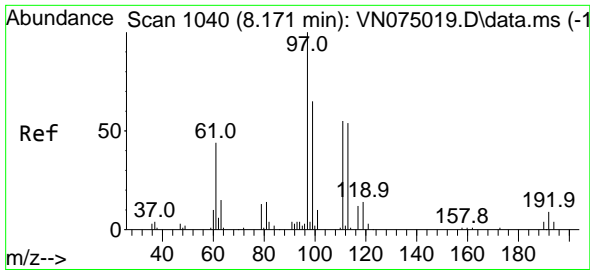


#34
 1,4-Difluorobenzene
 Concen: 50.000 ug/l
 RT: 9.106 min Scan# 1199
 Delta R.T. 0.000 min
 Lab File: VN075198.D
 Acq: 07 Nov 2022 19:23



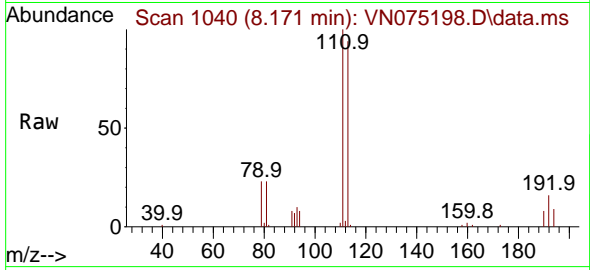
Tgt Ion:114 Resp: 177195
 Ion Ratio Lower Upper
 114 100
 63 19.5 0.0 39.6
 88 15.2 0.0 29.0





#35
 Dibromofluoromethane
 Concen: 53.208 ug/l
 RT: 8.171 min Scan# 1040
 Delta R.T. -0.000 min
 Lab File: VN075198.D
 Acq: 07 Nov 2022 19:23

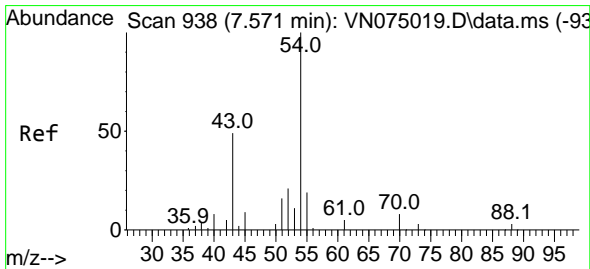
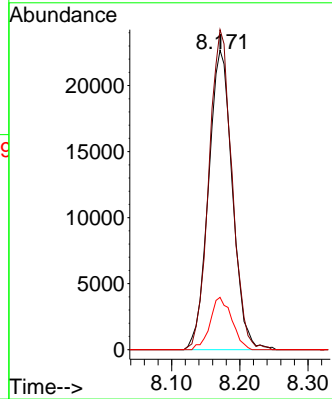
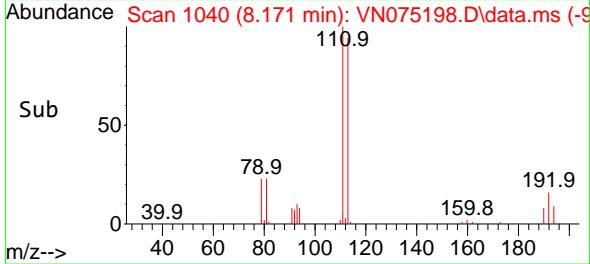
Instrument : MSVOA_N
 ClientSampleId : TP-4



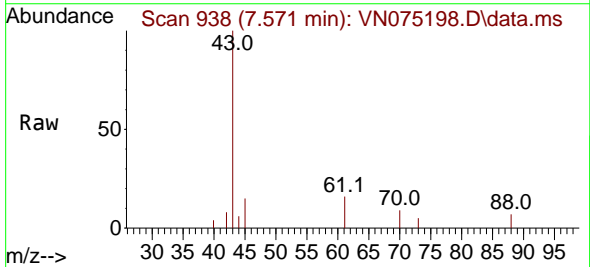
Tgt Ion: 113 Resp: 5534
 Ion Ratio Lower Upper
 113 100
 111 103.0 80.5 120.7
 192 15.9 13.2 19.8

Manual Integrations
 APPROVED

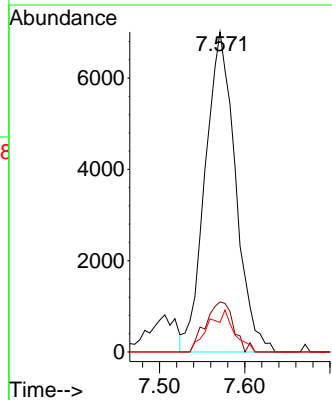
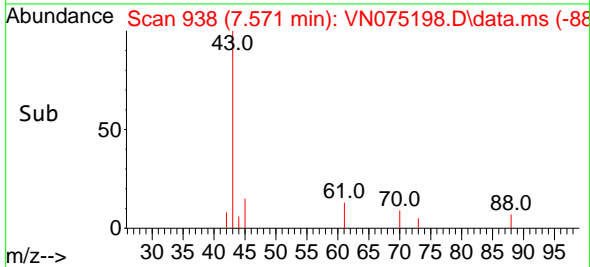
Reviewed By :John Carlone 11/08/2022
 Supervised By :Mahesh Dadoda 11/08/2022

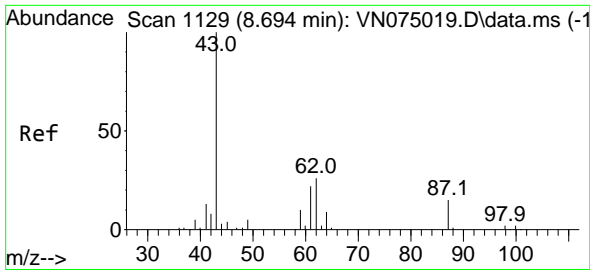


#37
 Ethyl Acetate
 Concen: 9.819 ug/l
 RT: 7.571 min Scan# 938
 Delta R.T. -0.000 min
 Lab File: VN075198.D
 Acq: 07 Nov 2022 19:23



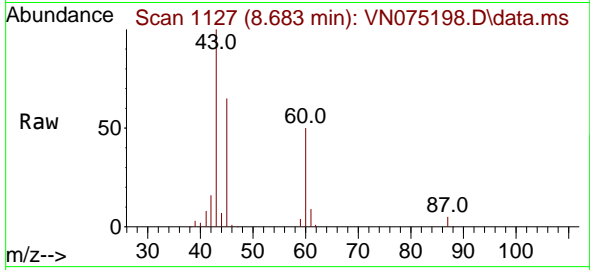
Tgt Ion: 43 Resp: 17342
 Ion Ratio Lower Upper
 43 100
 61 14.5 12.2 18.4
 70 11.3 9.4 14.2





#43
 Isopropyl Acetate
 Concen: 50.870 ug/l m
 RT: 8.683 min Scan# 1127
 Delta R.T. -0.011 min
 Lab File: VN075198.D
 Acq: 07 Nov 2022 19:23

Instrument : MSVOA_N
 ClientSampleId : TP-4

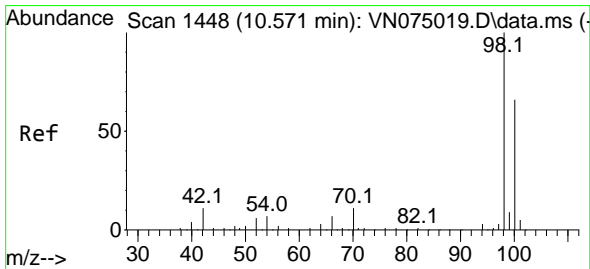
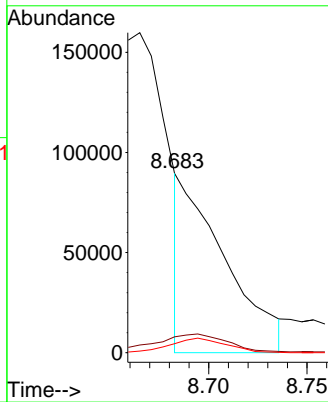
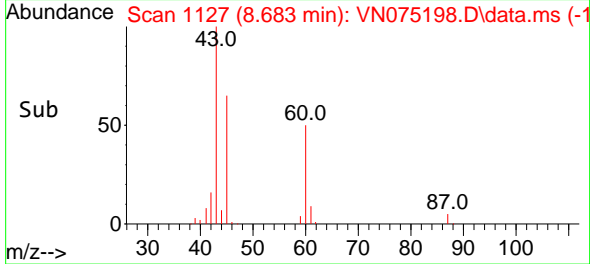


Tgt Ion: 43 Resp: 139360

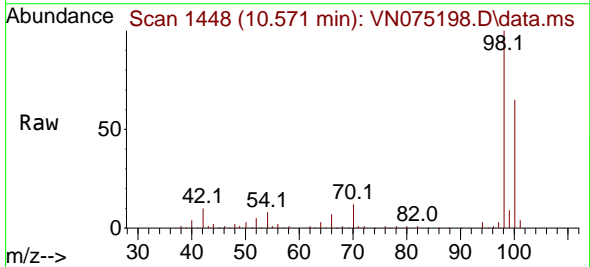
Ion	Ratio	Lower	Upper
43	100		
61	0.0	22.4	33.6
87	0.0	12.5	18.7

Manual Integrations
 APPROVED

Reviewed By :John Carlone 11/08/2022
 Supervised By :Mahesh Dadoda 11/08/2022

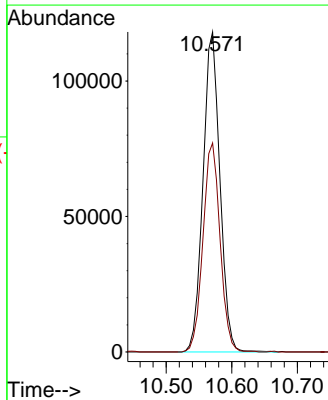
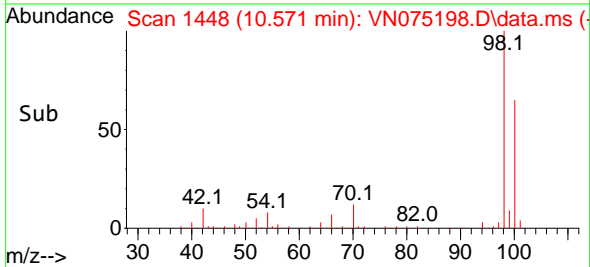


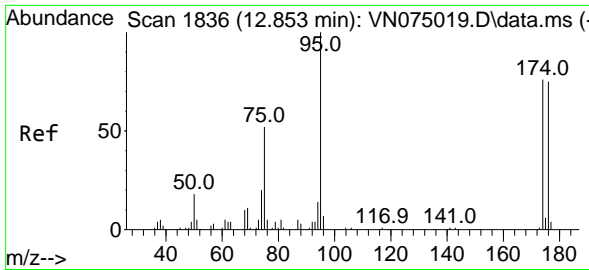
#50
 Toluene-d8
 Concen: 52.494 ug/l
 RT: 10.571 min Scan# 1448
 Delta R.T. -0.000 min
 Lab File: VN075198.D
 Acq: 07 Nov 2022 19:23



Tgt Ion: 98 Resp: 211853

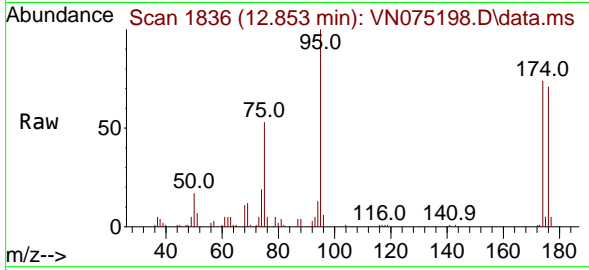
Ion	Ratio	Lower	Upper
98	100		
100	66.1	53.0	79.6





#62
 4-Bromofluorobenzene
 Concen: 48.667 ug/l
 RT: 12.853 min Scan# 1836
 Delta R.T. -0.000 min
 Lab File: VN075198.D
 Acq: 07 Nov 2022 19:23

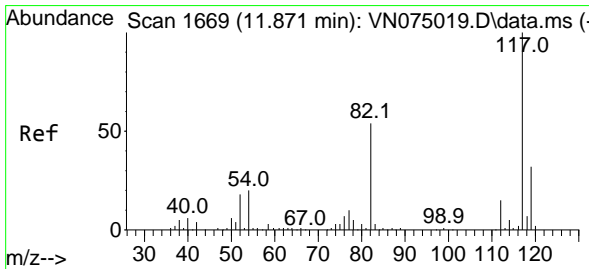
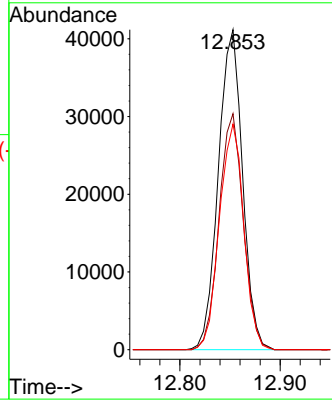
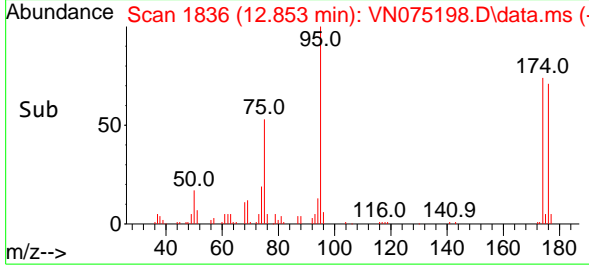
Instrument : MSVOA_N
 ClientSampleId : TP-4



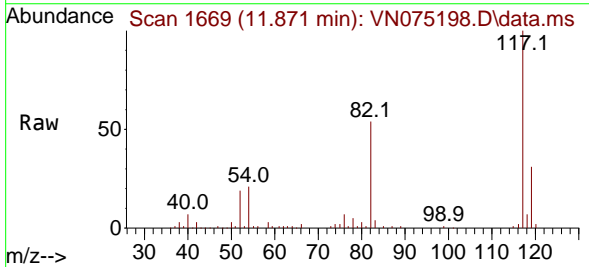
Tgt Ion: 95 Resp: 6899
 Ion Ratio Lower Upper
 95 100
 174 73.7 0.0 147.4
 176 71.0 0.0 142.2

Manual Integrations
APPROVED

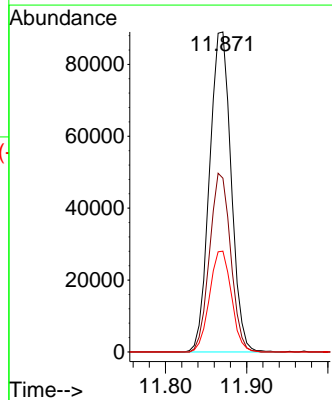
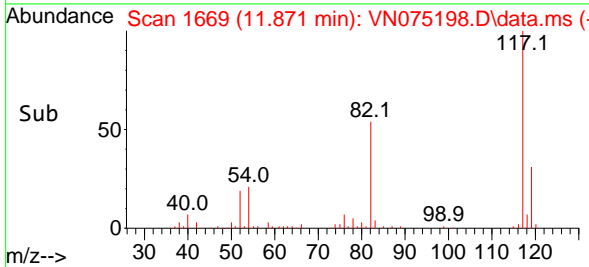
Reviewed By :John Carlone 11/08/2022
 Supervised By :Mahesh Dadoda 11/08/2022

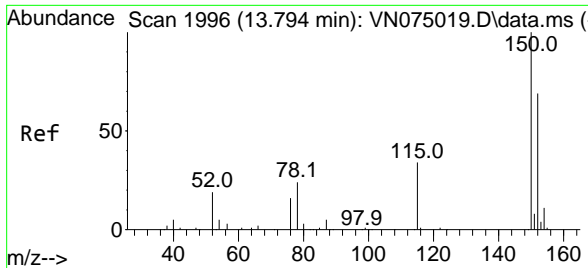


#63
 Chlorobenzene-d5
 Concen: 50.000 ug/l
 RT: 11.871 min Scan# 1669
 Delta R.T. -0.000 min
 Lab File: VN075198.D
 Acq: 07 Nov 2022 19:23



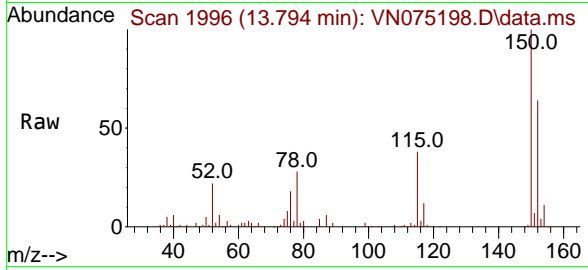
Tgt Ion:117 Resp: 164652
 Ion Ratio Lower Upper
 117 100
 82 54.3 43.1 64.7
 119 31.5 25.5 38.3





#72
 1,4-Dichlorobenzene-d4
 Concen: 50.000 ug/l
 RT: 13.794 min Scan# 1996
 Delta R.T. 0.000 min
 Lab File: VN075198.D
 Acq: 07 Nov 2022 19:23

Instrument :
 MSVOA_N
 ClientSampleId :
 TP-4



Tgt Ion:152 Resp: 62198

Ion	Ratio	Lower	Upper
152	100		
115	62.7	30.2	90.6
150	158.7	0.0	348.4

Manual Integrations
APPROVED

Reviewed By :John Carlone 11/08/2022
 Supervised By :Mahesh Dadoda 11/08/2022

