

Data Path : Z:\voasrv\HPCHEM1\MSVOA_N\Data\VN110723\
 Data File : VN079971.D
 Acq On : 07 Nov 2023 17:46
 Operator : JC\MD
 Sample : 05107-27DL 10X
 Misc : 5.0mL/MSVOA_N/WATER
 ALS Vial : 14 Sample Multiplier: 1

Instrument :
 MSVOA_N
 ClientSampleId :
 1074DL

Quant Time: Nov 08 04:32:06 2023
 Quant Method : Z:\voasrv\HPCHEM1\MSVOA_N\methods\82N110123W.M
 Quant Title : SW846 8260
 QLast Update : Thu Nov 02 05:49:08 2023
 Response via : Initial Calibration

Compound	R.T.	QIon	Response	Conc	Units	Dev(Min)
Internal Standards						
1) Pentafluorobenzene	8.229	168	286703	50.000	ug/l	0.00
34) 1,4-Difluorobenzene	9.106	114	583685	50.000	ug/l	0.00
63) Chlorobenzene-d5	11.870	117	601413	50.000	ug/l	0.00
72) 1,4-Dichlorobenzene-d4	13.794	152	262227	50.000	ug/l	0.00
System Monitoring Compounds						
33) 1,2-Dichloroethane-d4	8.582	65	241788	55.354	ug/l	0.00
Spiked Amount	50.000	Range 74 - 125	Recovery	=	110.700%	
35) Dibromofluoromethane	8.171	113	195465	47.316	ug/l	0.00
Spiked Amount	50.000	Range 75 - 124	Recovery	=	94.640%	
50) Toluene-d8	10.570	98	721265	47.427	ug/l	0.00
Spiked Amount	50.000	Range 86 - 113	Recovery	=	94.860%	
62) 4-Bromofluorobenzene	12.853	95	272049	53.938	ug/l	0.00
Spiked Amount	50.000	Range 83 - 123	Recovery	=	107.880%	
Target Compounds						
					Qvalue	
3) Chloromethane	2.353	50	1410	Below Cal	#	42
11) Tert butyl alcohol	5.500	59	1575	2.825	ug/l #	72
13) Acrolein	4.177	56	69	2.710	ug/l #	64
16) Acetone	4.441	43	42451	27.668	ug/l #	86
18) Methyl Acetate	5.047	43	2640	0.360	ug/l #	60
20) Methylene Chloride	5.277	84	4897	1.265	ug/l #	82
25) 2-Butanone	7.500	43	7376	3.283	ug/l #	75
26) 2,2-Dichloropropane	7.430	77	1888	0.343	ug/l #	53
30) Chloroform	7.959	83	2065	0.286	ug/l	85
31) Cyclohexane	8.229	56	9082	1.573	ug/l #	48
36) 1,1-Dichloropropene	8.229	75	26195	4.441	ug/l #	46
37) Ethyl Acetate	7.500	43	7700	1.423	ug/l #	63
38) Carbon Tetrachloride	8.229	117	30383	5.111	ug/l #	16
39) Methylcyclohexane	9.600	83	1401	0.252	ug/l #	88
40) Benzene	8.612	78	696800	39.441	ug/l	100
42) 1,2-Dichloroethane	8.606	62	7052	1.143	ug/l #	73
43) Isopropyl Acetate	8.694	43	32233	3.398	ug/l #	75
48) Methyl methacrylate	9.665	41	2164	0.521	ug/l #	34
51) 4-Methyl-2-Pentanone	10.459	43	3538	0.662	ug/l #	82
52) Toluene	10.635	92	343817	32.827	ug/l	97
53) t-1,3-Dichloropropene	10.641	75	4624	0.717	ug/l #	1
54) cis-1,3-Dichloropropene	10.365	75	6321	0.900	ug/l #	73
55) 1,1,2-Trichloroethane	10.894	97	3524	0.837	ug/l #	16
59) 2-Hexanone	11.182	43	15275	3.738	ug/l #	19
67) Ethyl Benzene	11.965	91	45184	1.988	ug/l	95
68) m/p-Xylenes	12.070	106	79758	9.420	ug/l	92
69) o-Xylene	12.400	106	61564	7.551	ug/l	87
70) Styrene	12.412	104	14507	1.107	ug/l #	30
71) Bromoform	12.853	173	1526	0.457	ug/l #	1
74) N-amyl acetate	12.464	43	2678	0.308	ug/l #	42
76) 1,2,3-Trichloropropane	12.853	75	145110	23.571	ug/l #	1
78) n-propylbenzene	13.041	91	4956	0.217	ug/l	89
79) 2-Chlorotoluene	13.094	91	3187	0.219	ug/l #	42
80) 1,3,5-Trimethylbenzene	13.176	105	18127	1.171	ug/l	93
81) trans-1,4-Dichloro-2-b...	12.853	75	145110	64.131	ug/l #	15
84) 1,2,4-Trimethylbenzene	13.488	105	54793	3.597	ug/l	82

Data Path : Z:\voasrv\HPCHEM1\MSVOA_N\Data\VN110723\
Data File : VN079971.D
Acq On : 07 Nov 2023 17:46
Operator : JC\MD
Sample : 05107-27DL 10X
Misc : 5.0mL/MSVOA_N/WATER
ALS Vial : 14 Sample Multiplier: 1

Instrument :
MSVOA_N
ClientSampleId :
1074DL

Quant Time: Nov 08 04:32:06 2023
Quant Method : Z:\voasrv\HPCHEM1\MSVOA_N\methods\82N110123W.M
Quant Title : SW846 8260
QLast Update : Thu Nov 02 05:49:08 2023
Response via : Initial Calibration

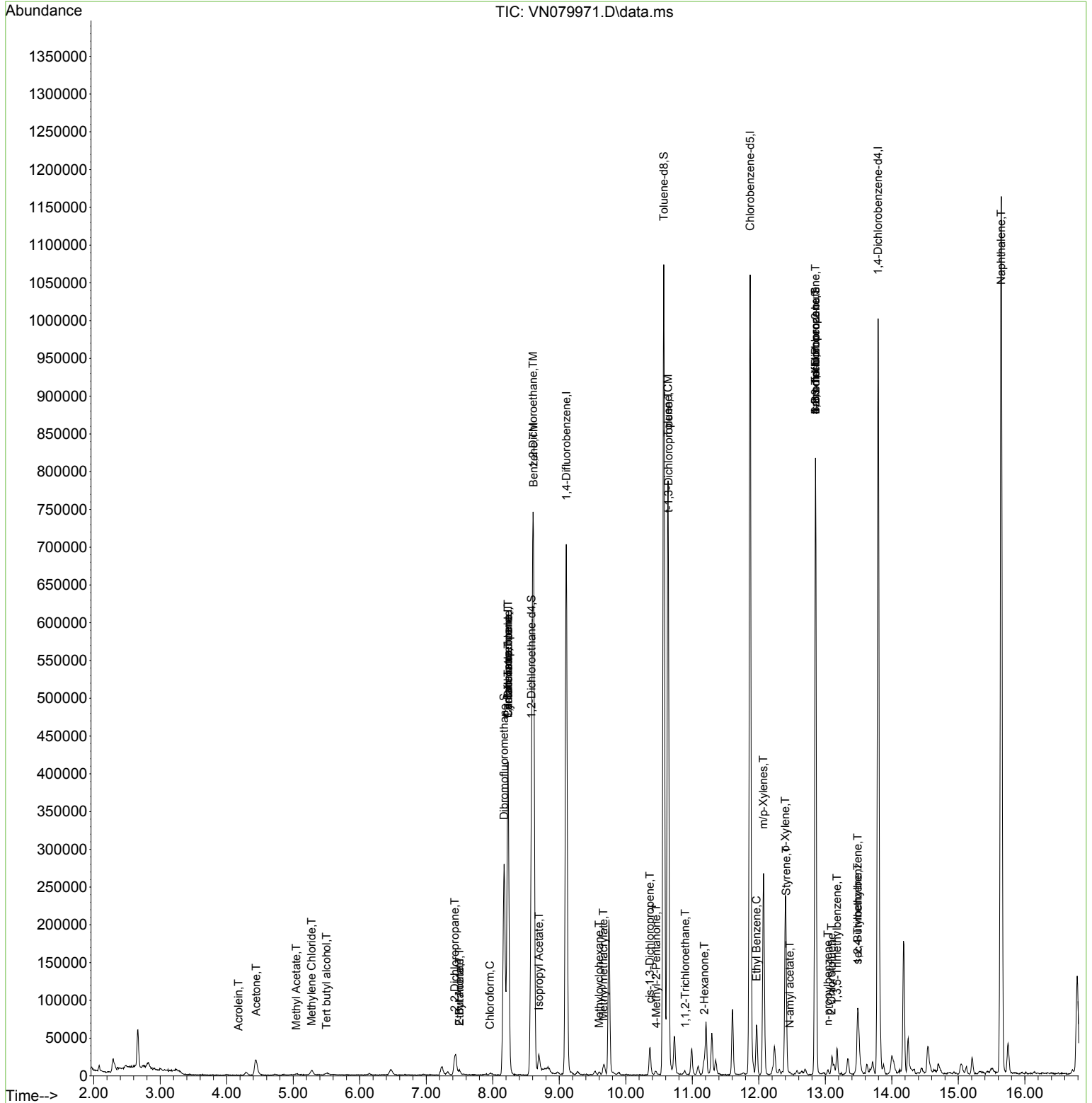
Compound	R.T.	QIon	Response	Conc	Units	Dev(Min)
85) sec-Butylbenzene	13.488	105	54793	3.120	ug/l #	57
95) Naphthalene	15.647	128	1032952	74.866	ug/l	100

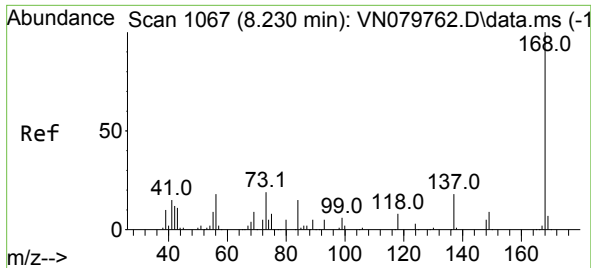
(#) = qualifier out of range (m) = manual integration (+) = signals summed

Data Path : Z:\voasrv\HPCHEM1\MSVOA_N\Data\VN110723\
 Data File : VN079971.D
 Acq On : 07 Nov 2023 17:46
 Operator : JC\MD
 Sample : 05107-27DL 10X
 Misc : 5.0mL/MSVOA_N/WATER
 ALS Vial : 14 Sample Multiplier: 1

Instrument :
 MSVOA_N
 ClientSampleId :
 1074DL

Quant Time: Nov 08 04:32:06 2023
 Quant Method : Z:\voasrv\HPCHEM1\MSVOA_N\methods\82N110123W.M
 Quant Title : SW846 8260
 QLast Update : Thu Nov 02 05:49:08 2023
 Response via : Initial Calibration

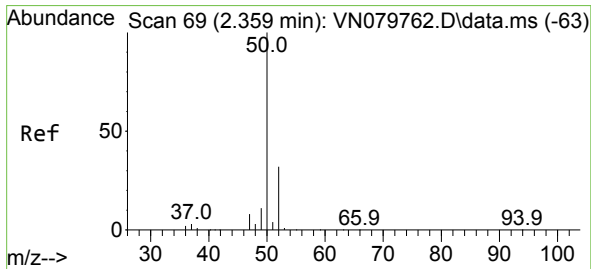
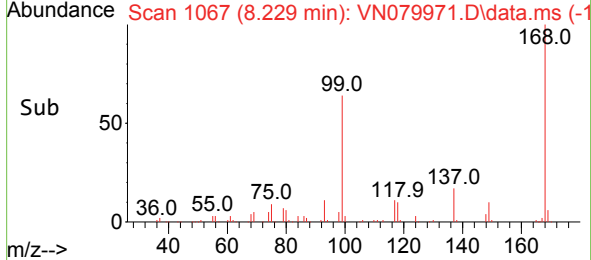
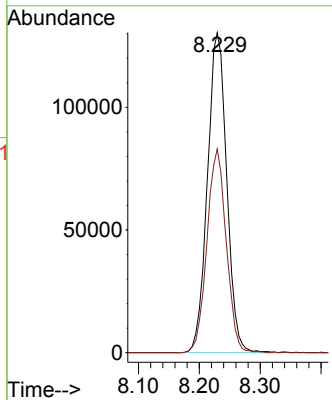
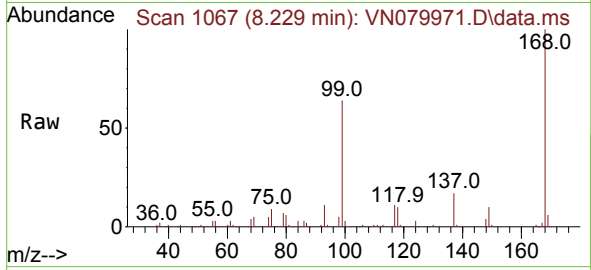




#1
 Pentafluorobenzene
 Concen: 50.000 ug/l
 RT: 8.229 min Scan# 10
 Delta R.T. 0.000 min
 Lab File: VN079971.D
 Acq: 07 Nov 2023 17:46

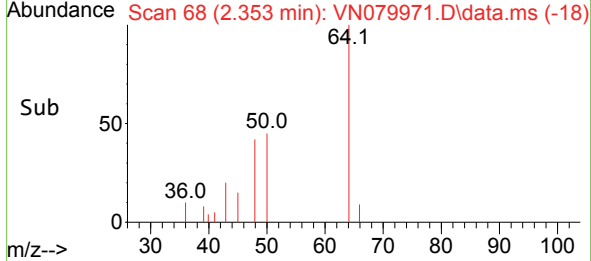
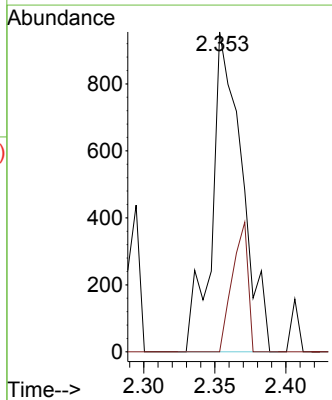
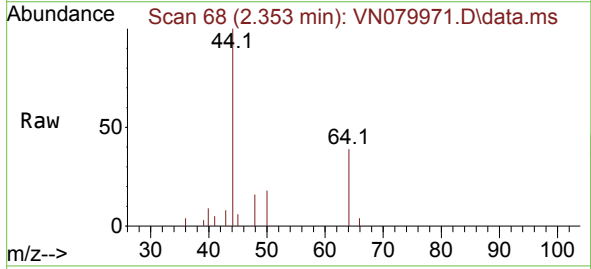
Instrument : MSVOA_N
 ClientSampleId : 1074DL

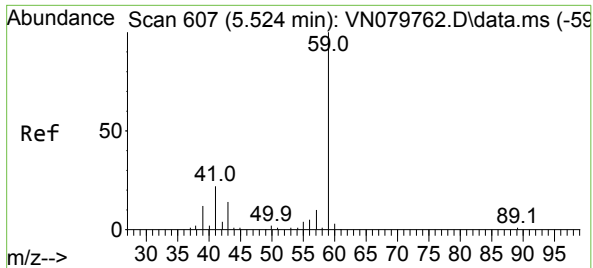
Tgt Ion:168 Resp: 286703
 Ion Ratio Lower Upper
 168 100
 99 63.6 53.0 79.6



#3
 Chloromethane
 Concen: Below Cal
 RT: 2.353 min Scan# 68
 Delta R.T. -0.006 min
 Lab File: VN079971.D
 Acq: 07 Nov 2023 17:46

Tgt Ion: 50 Resp: 1410
 Ion Ratio Lower Upper
 50 100
 52 0.0 26.5 39.7#

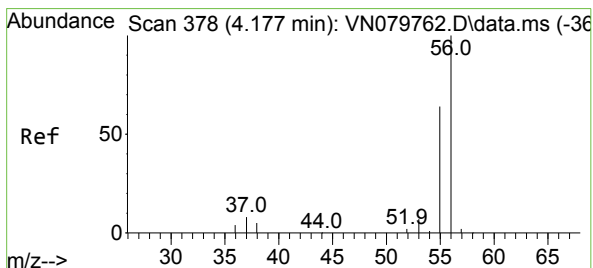
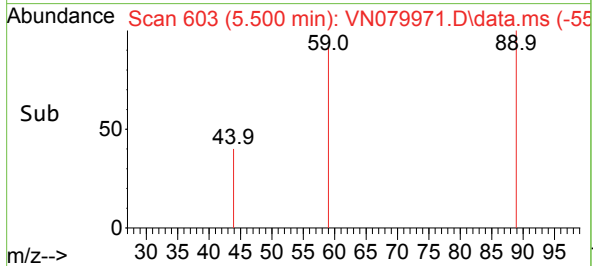
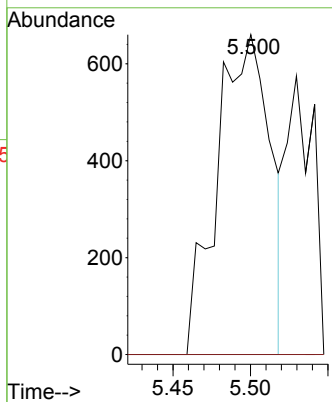
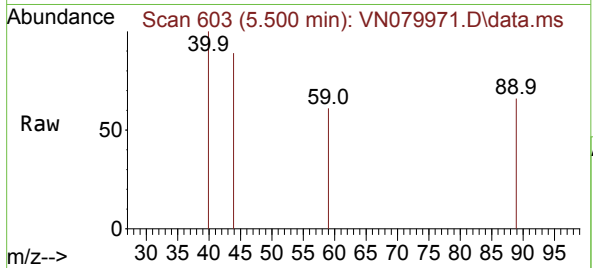




#11
 Tert butyl alcohol
 Concen: 2.825 ug/l
 RT: 5.500 min Scan# 607
 Delta R.T. -0.018 min
 Lab File: VN079971.D
 Acq: 07 Nov 2023 17:46

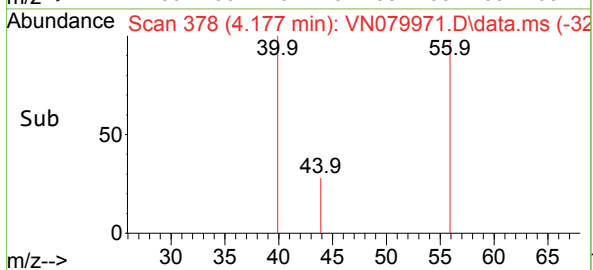
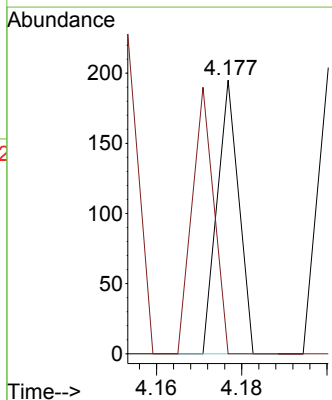
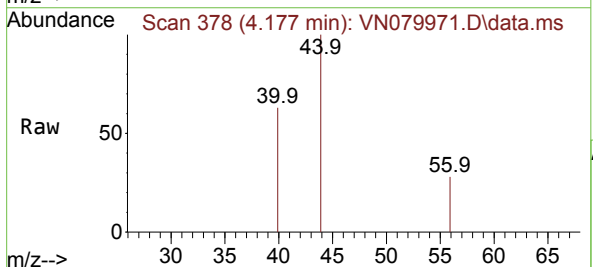
Instrument : MSVOA_N
 ClientSampleId : 1074DL

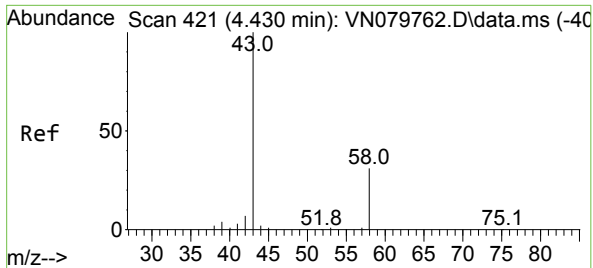
Tgt Ion: 59 Resp: 1575
 Ion Ratio Lower Upper
 59 100
 57 0.0 8.2 12.4#



#13
 Acrolein
 Concen: 2.710 ug/l
 RT: 4.177 min Scan# 378
 Delta R.T. -0.006 min
 Lab File: VN079971.D
 Acq: 07 Nov 2023 17:46

Tgt Ion: 56 Resp: 69
 Ion Ratio Lower Upper
 56 100
 55 97.1 54.5 81.7#

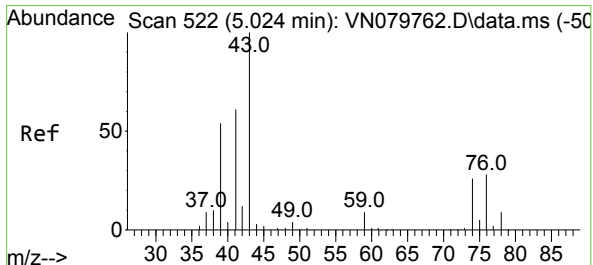
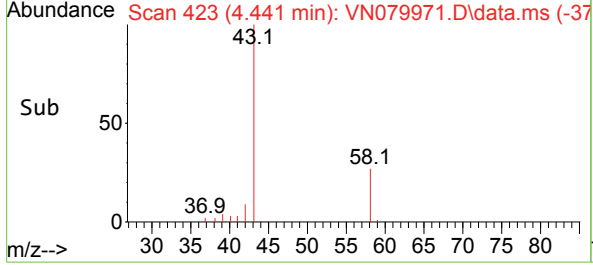
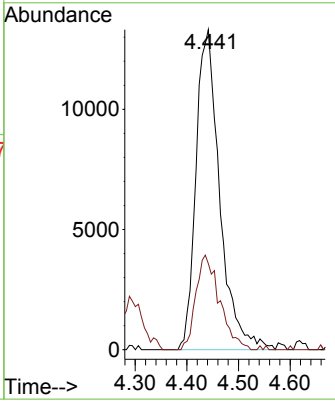
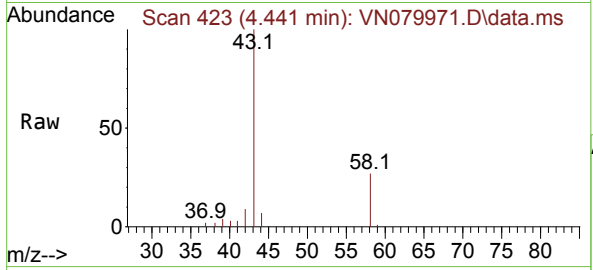




#16
 Acetone
 Concen: 27.668 ug/l
 RT: 4.441 min Scan# 41
 Delta R.T. 0.012 min
 Lab File: VN079971.D
 Acq: 07 Nov 2023 17:46

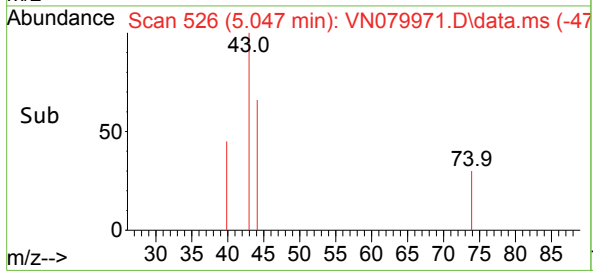
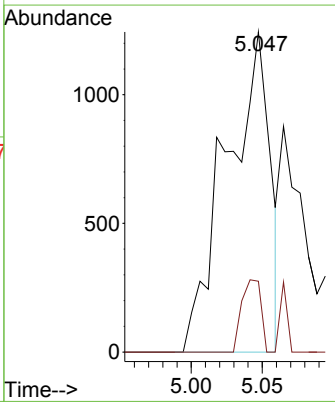
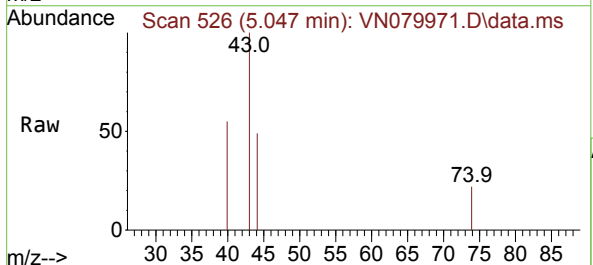
Instrument : MSVOA_N
 ClientSampleId : 1074DL

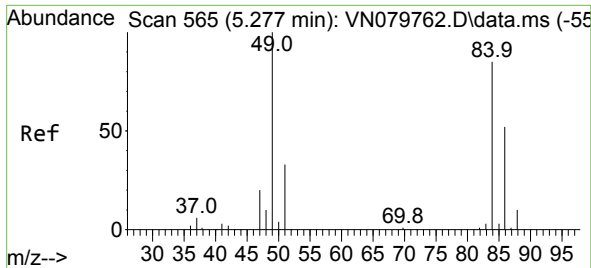
Tgt Ion: 43 Resp: 42451
 Ion Ratio Lower Upper
 43 100
 58 26.9 28.0 42.0#



#18
 Methyl Acetate
 Concen: 0.360 ug/l
 RT: 5.047 min Scan# 526
 Delta R.T. 0.024 min
 Lab File: VN079971.D
 Acq: 07 Nov 2023 17:46

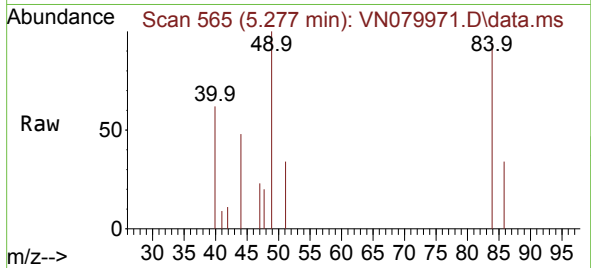
Tgt Ion: 43 Resp: 2640
 Ion Ratio Lower Upper
 43 100
 74 10.1 26.2 39.4#



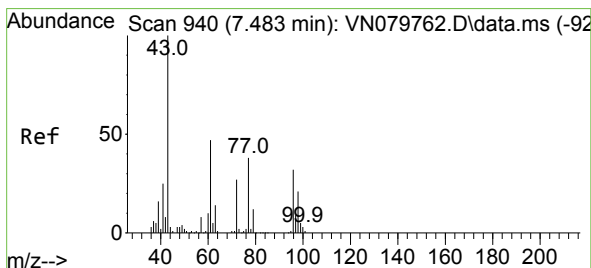
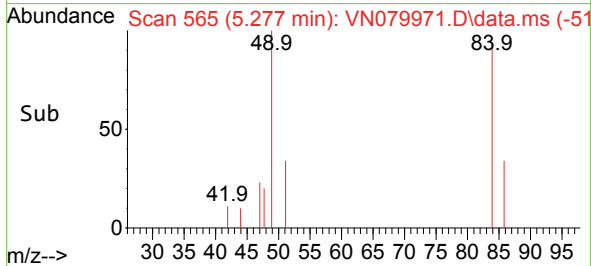
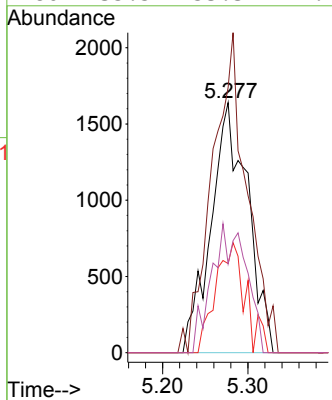


#20
 Methylene Chloride
 Concen: 1.265 ug/l
 RT: 5.277 min Scan# 50
 Delta R.T. 0.006 min
 Lab File: VN079971.D
 Acq: 07 Nov 2023 17:46

Instrument :
 MSVOA_N
 ClientSampleId :
 1074DL

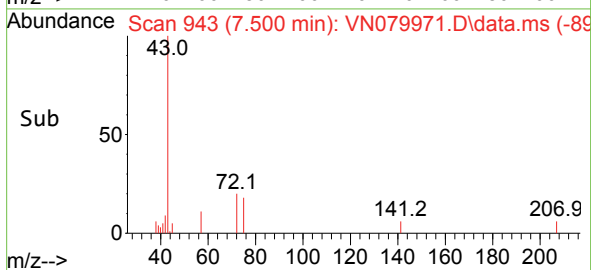
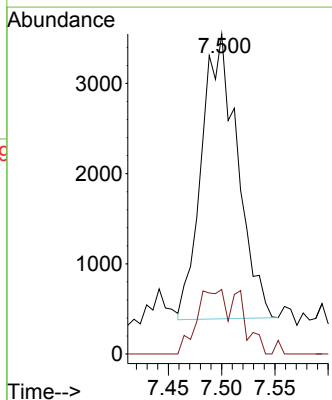
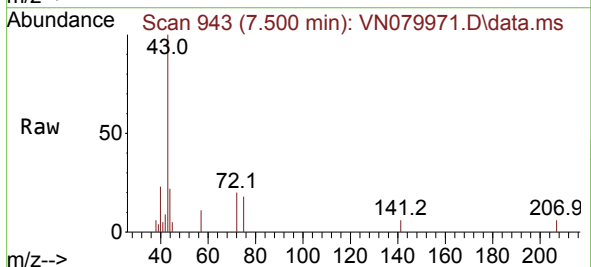


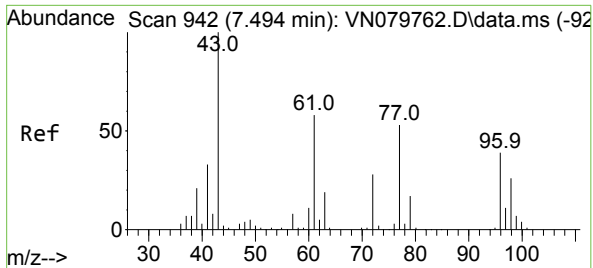
Tgt Ion: 84 Resp: 4897
 Ion Ratio Lower Upper
 84 100
 49 106.0 79.7 119.5
 51 35.7 25.2 37.8
 86 35.5 53.3 79.9#



#25
 2-Butanone
 Concen: 3.283 ug/l
 RT: 7.500 min Scan# 943
 Delta R.T. 0.012 min
 Lab File: VN079971.D
 Acq: 07 Nov 2023 17:46

Tgt Ion: 43 Resp: 7376
 Ion Ratio Lower Upper
 43 100
 72 22.7 30.2 45.2#

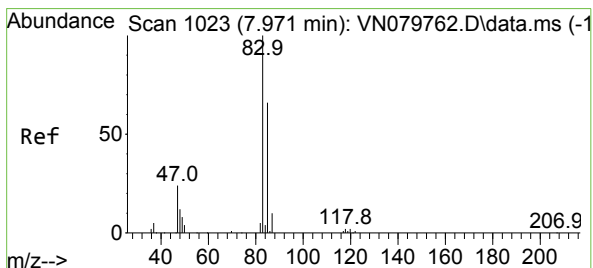
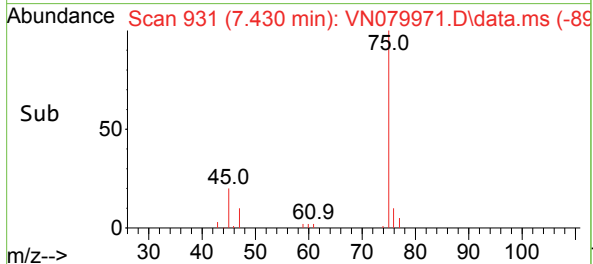
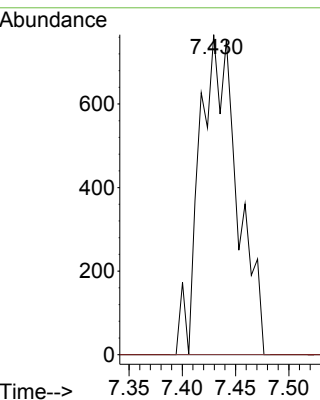
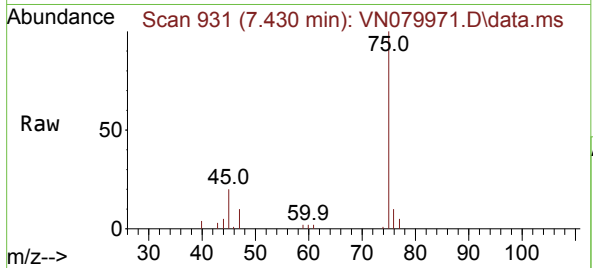




#26
 2,2-Dichloropropane
 Concen: 0.343 ug/l
 RT: 7.430 min Scan# 91
 Delta R.T. -0.059 min
 Lab File: VN079971.D
 Acq: 07 Nov 2023 17:46

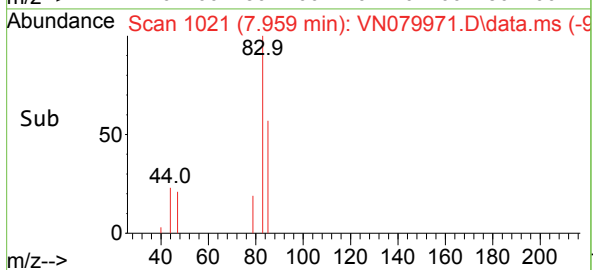
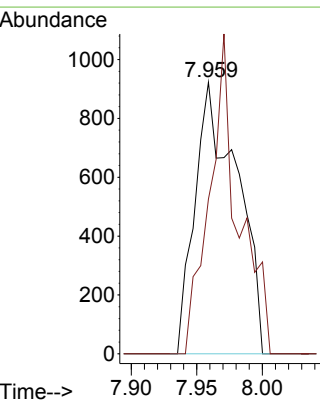
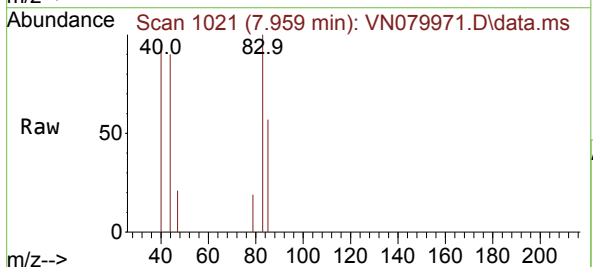
Instrument : MSVOA_N
 ClientSampleId : 1074DL

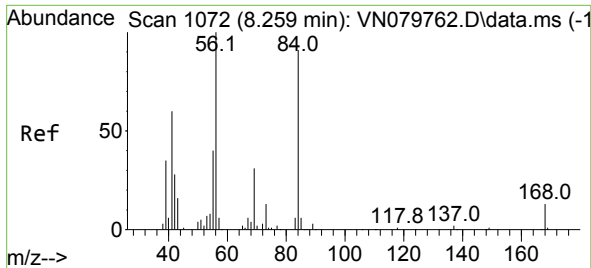
Tgt Ion: 77 Resp: 1888
 Ion Ratio Lower Upper
 77 100
 97 0.0 11.2 33.6#



#30
 Chloroform
 Concen: 0.286 ug/l
 RT: 7.959 min Scan# 1021
 Delta R.T. -0.012 min
 Lab File: VN079971.D
 Acq: 07 Nov 2023 17:46

Tgt Ion: 83 Resp: 2065
 Ion Ratio Lower Upper
 83 100
 85 57.0 55.4 83.0

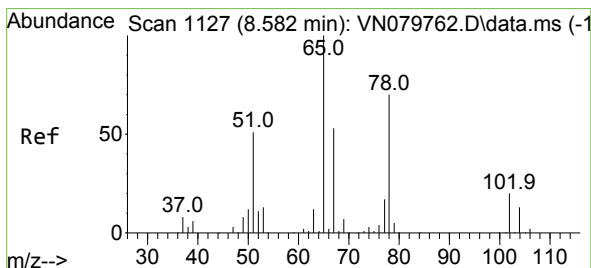
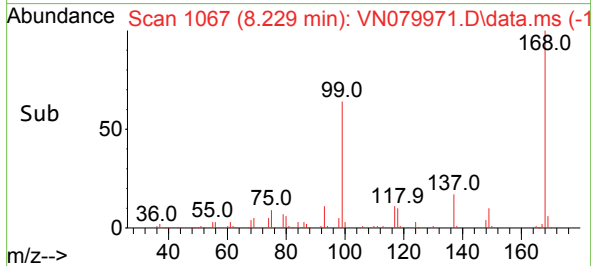
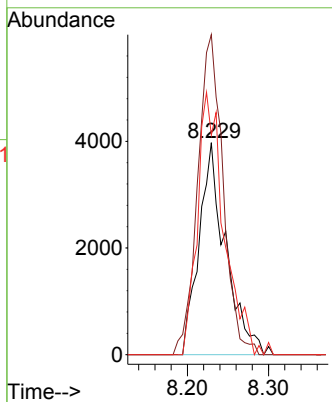
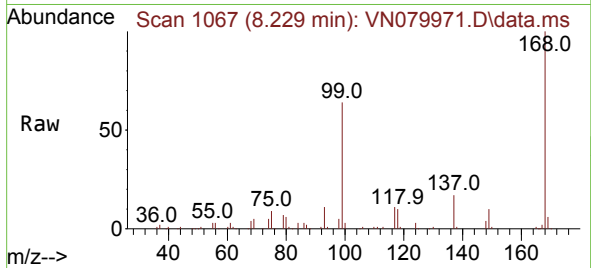




#31
 Cyclohexane
 Concen: 1.573 ug/l
 RT: 8.229 min Scan# 1067
 Delta R.T. -0.029 min
 Lab File: VN079971.D
 Acq: 07 Nov 2023 17:46

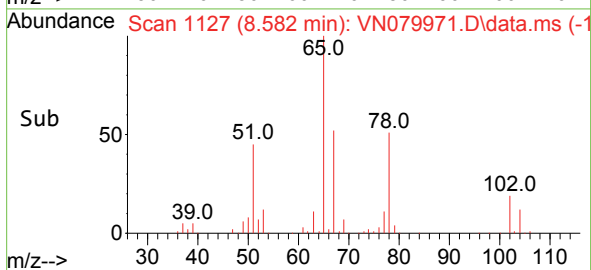
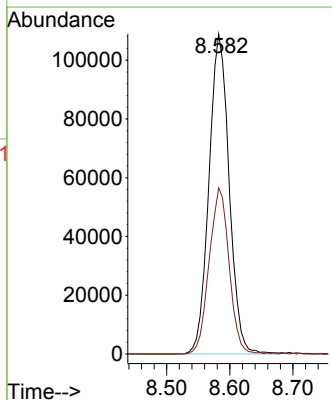
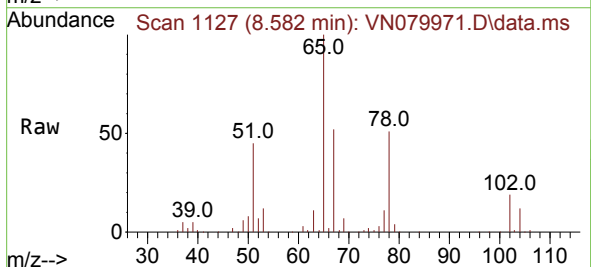
Instrument : MSVOA_N
 ClientSampleId : 1074DL

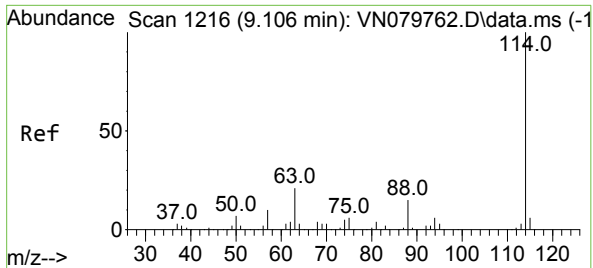
Tgt Ion: 56 Resp: 9082
 Ion Ratio Lower Upper
 56 100
 69 151.0 26.8 40.2#
 84 103.5 81.8 122.6



#33
 1,2-Dichloroethane-d4
 Concen: 55.354 ug/l
 RT: 8.582 min Scan# 1127
 Delta R.T. -0.000 min
 Lab File: VN079971.D
 Acq: 07 Nov 2023 17:46

Tgt Ion: 65 Resp: 241788
 Ion Ratio Lower Upper
 65 100
 67 51.3 0.0 106.6

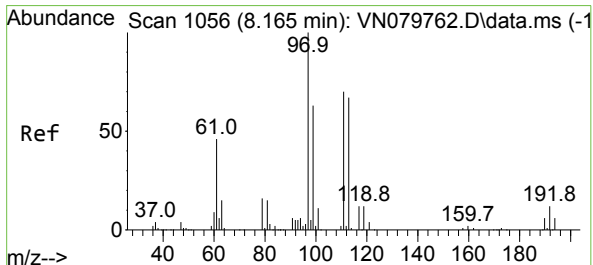
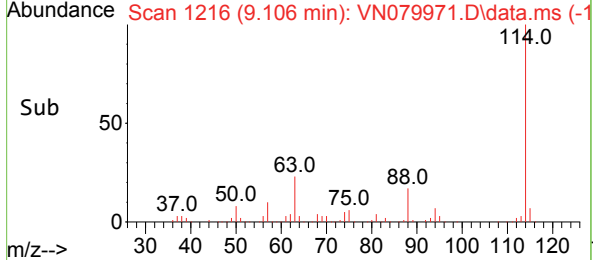
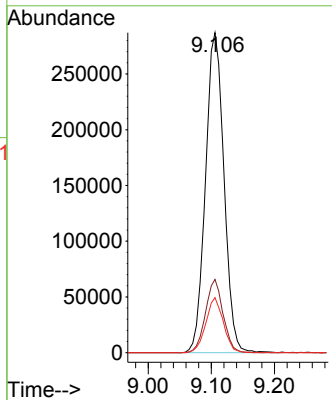
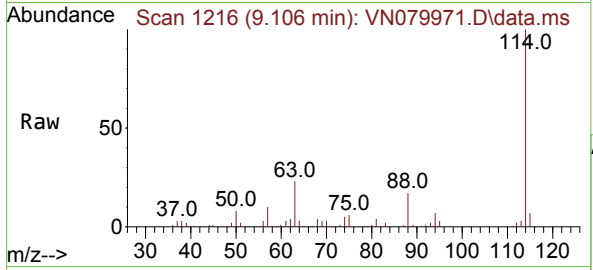




#34
 1,4-Difluorobenzene
 Concen: 50.000 ug/l
 RT: 9.106 min Scan# 11
 Delta R.T. -0.000 min
 Lab File: VN079971.D
 Acq: 07 Nov 2023 17:46

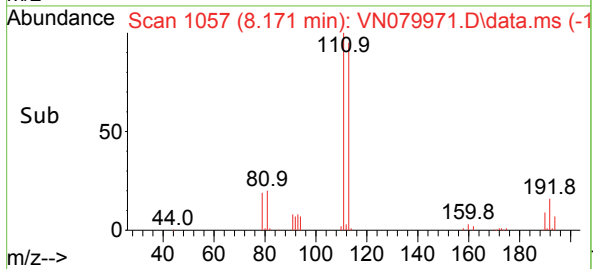
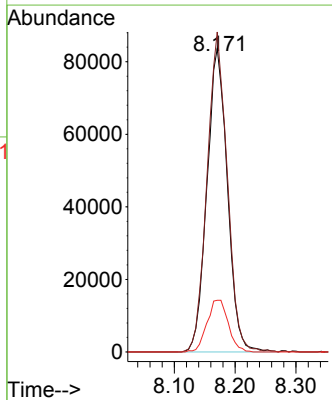
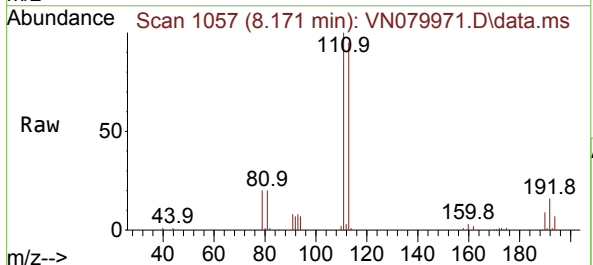
Instrument : MSVOA_N
 ClientSampleId : 1074DL

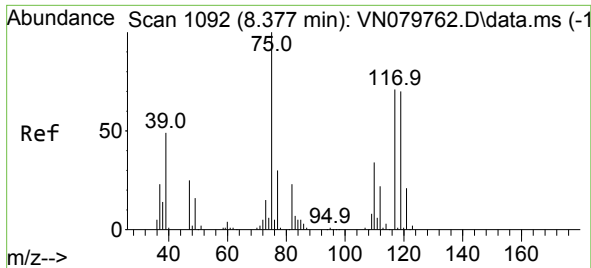
Tgt Ion	Resp	Lower	Upper
114	100		
63	22.9	0.0	36.4
88	17.2	0.0	30.6



#35
 Dibromofluoromethane
 Concen: 47.316 ug/l
 RT: 8.171 min Scan# 1057
 Delta R.T. -0.000 min
 Lab File: VN079971.D
 Acq: 07 Nov 2023 17:46

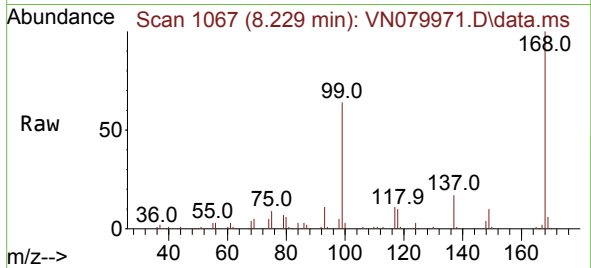
Tgt Ion	Resp	Lower	Upper
113	100		
111	104.1	82.6	123.8
192	17.7	12.7	19.1



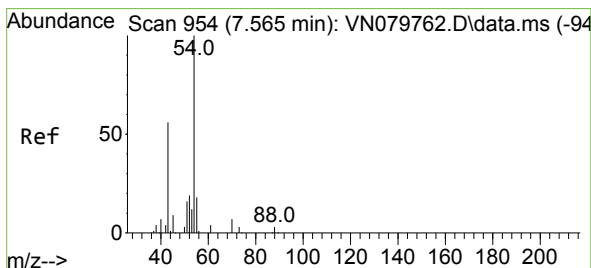
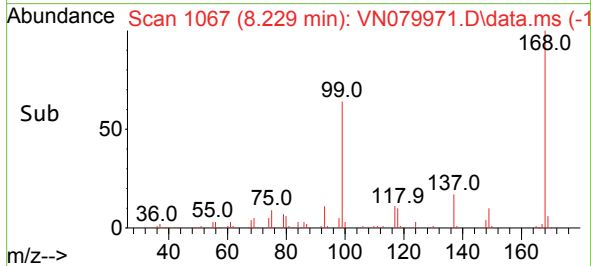
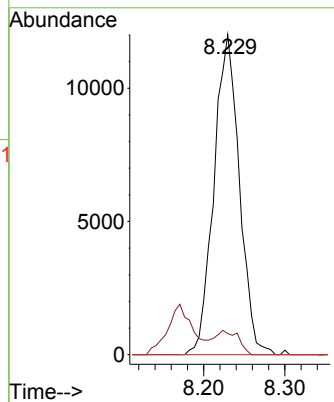


#36
 1,1-Dichloropropene
 Concen: 4.441 ug/l
 RT: 8.229 min Scan# 1067
 Delta R.T. -0.147 min
 Lab File: VN079971.D
 Acq: 07 Nov 2023 17:46

Instrument : MSVOA_N
 ClientSampleId : 1074DL

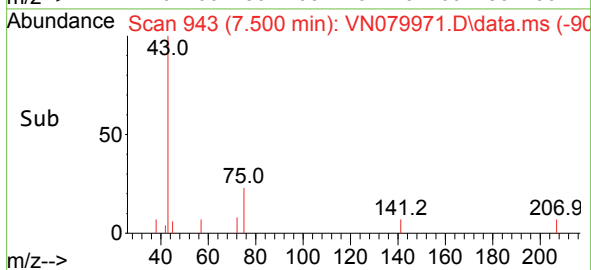
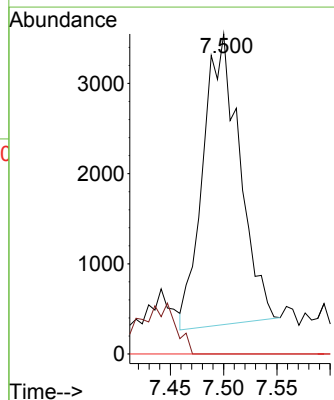
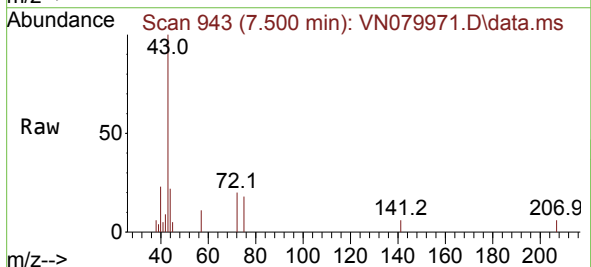


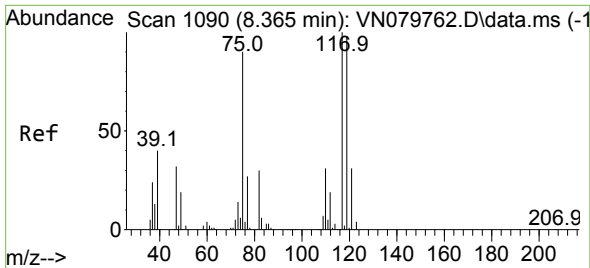
Tgt Ion: 75 Resp: 26195
 Ion Ratio Lower Upper
 75 100
 110 6.9 19.1 57.3#
 77 0.0 25.0 37.4#



#37
 Ethyl Acetate
 Concen: 1.423 ug/l
 RT: 7.500 min Scan# 943
 Delta R.T. -0.065 min
 Lab File: VN079971.D
 Acq: 07 Nov 2023 17:46

Tgt Ion: 43 Resp: 7700
 Ion Ratio Lower Upper
 43 100
 61 0.0 13.2 19.8#
 70 0.0 11.3 16.9#



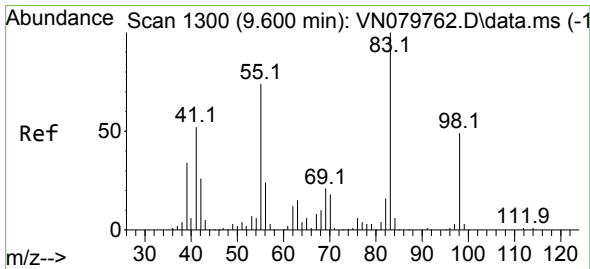
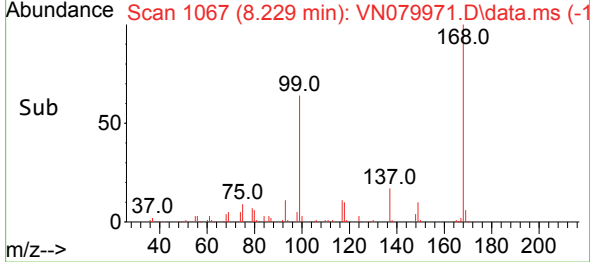
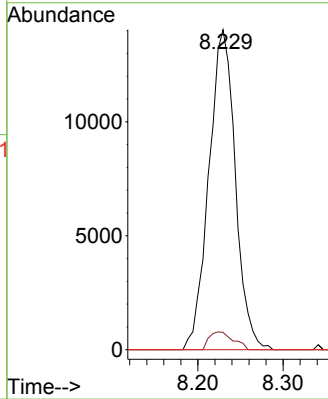
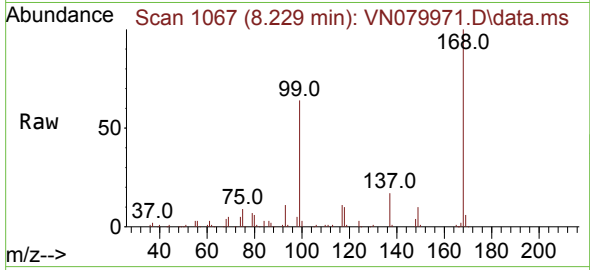


#38
 Carbon Tetrachloride
 Concen: 5.111 ug/l
 RT: 8.229 min Scan# 1067
 Delta R.T. -0.129 min
 Lab File: VN079971.D
 Acq: 07 Nov 2023 17:46

Instrument : MSVOA_N
 ClientSampleId : 1074DL

Tgt Ion:117 Resp: 30383

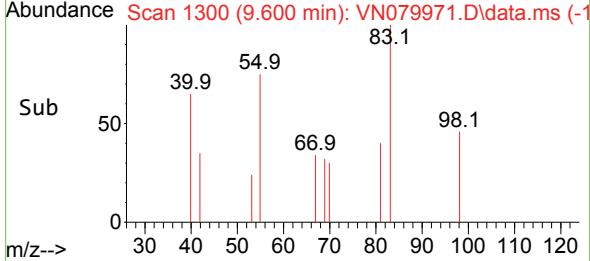
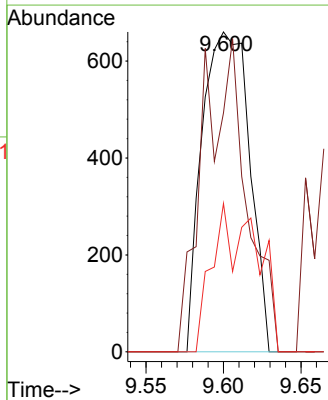
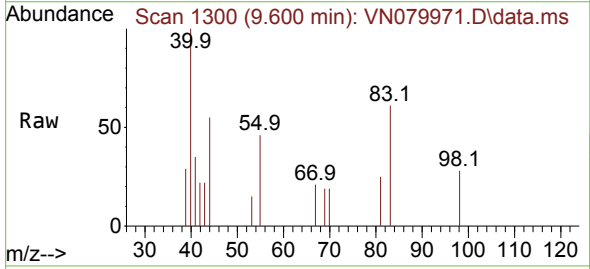
Ion	Ratio	Lower	Upper
117	100		
119	5.4	77.3	115.9#
121	0.0	23.3	34.9#

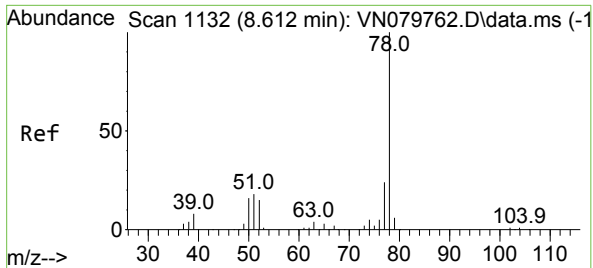


#39
 Methylcyclohexane
 Concen: 0.252 ug/l
 RT: 9.600 min Scan# 1300
 Delta R.T. -0.006 min
 Lab File: VN079971.D
 Acq: 07 Nov 2023 17:46

Tgt Ion: 83 Resp: 1401

Ion	Ratio	Lower	Upper
83	100		
55	74.7	49.1	73.7#
98	46.4	40.6	61.0

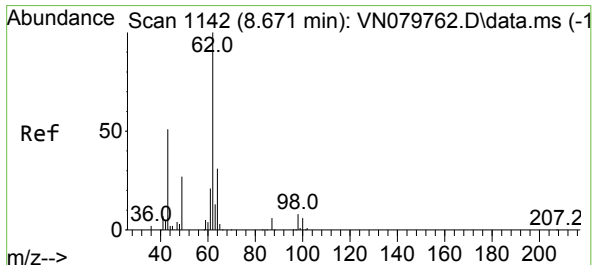
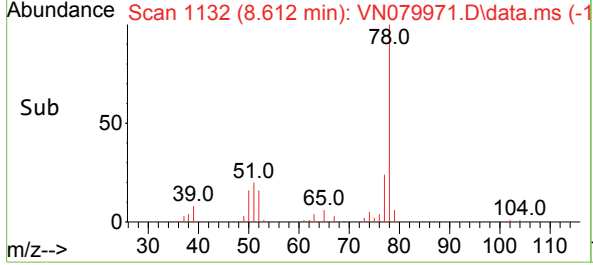
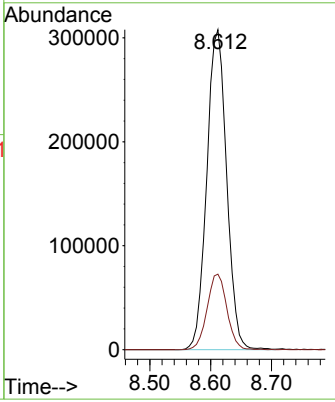
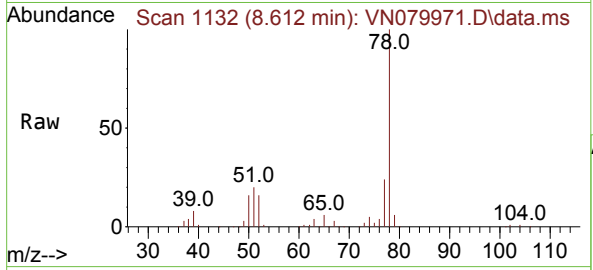




#40
Benzene
Concen: 39.441 ug/l
RT: 8.612 min Scan# 1132
Delta R.T. -0.000 min
Lab File: VN079971.D
Acq: 07 Nov 2023 17:46

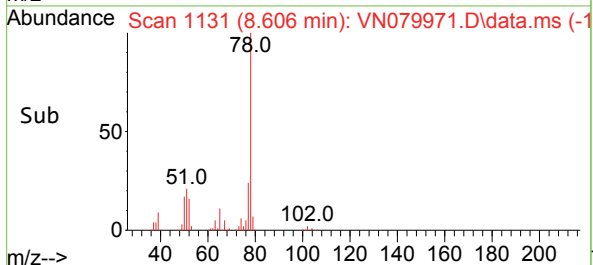
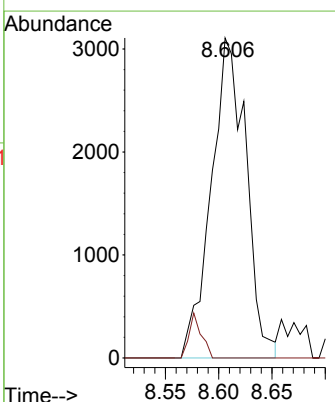
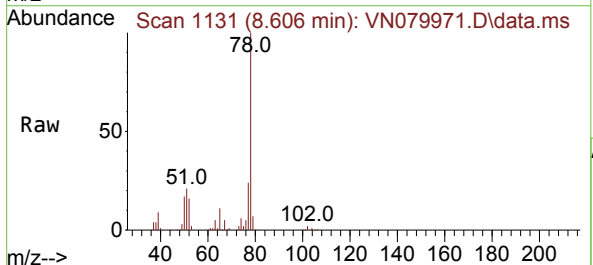
Instrument : MSVOA_N
ClientSampleId : 1074DL

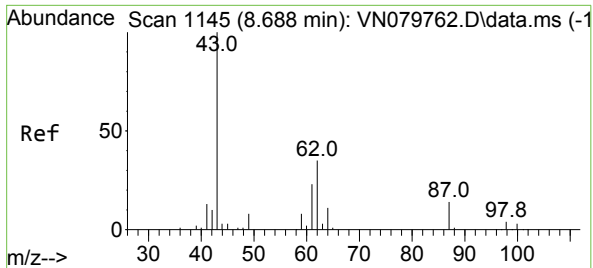
Tgt Ion: 78 Resp: 696800
Ion Ratio Lower Upper
78 100
77 23.6 19.0 28.6



#42
1,2-Dichloroethane
Concen: 1.143 ug/l
RT: 8.606 min Scan# 1131
Delta R.T. -0.065 min
Lab File: VN079971.D
Acq: 07 Nov 2023 17:46

Tgt Ion: 62 Resp: 7052
Ion Ratio Lower Upper
62 100
98 0.0 0.0 19.8



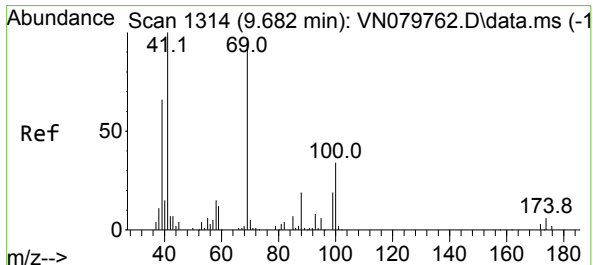
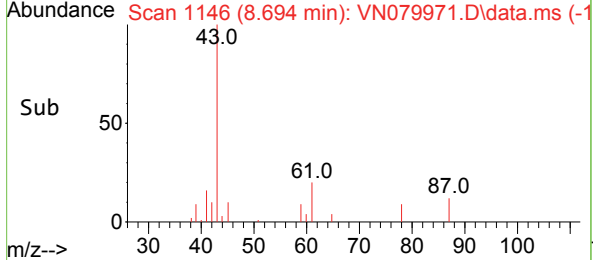
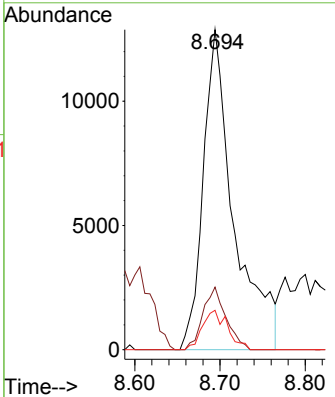
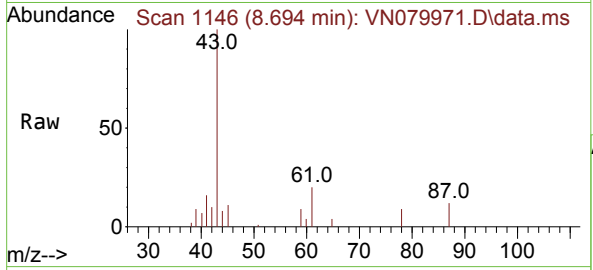


#43
 Isopropyl Acetate
 Concen: 3.398 ug/l
 RT: 8.694 min Scan# 1146
 Delta R.T. 0.006 min
 Lab File: VN079971.D
 Acq: 07 Nov 2023 17:46

Instrument : MSVOA_N
 ClientSampleId : 1074DL

Tgt Ion: 43 Resp: 32233

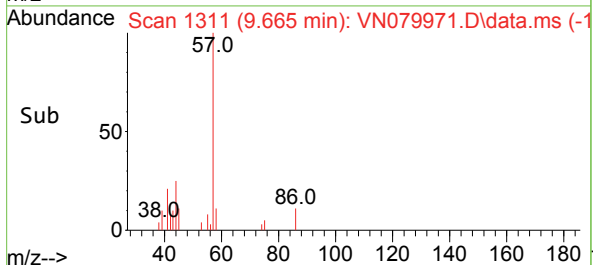
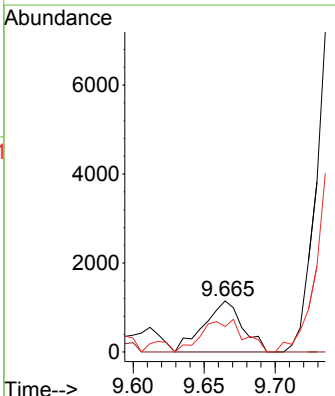
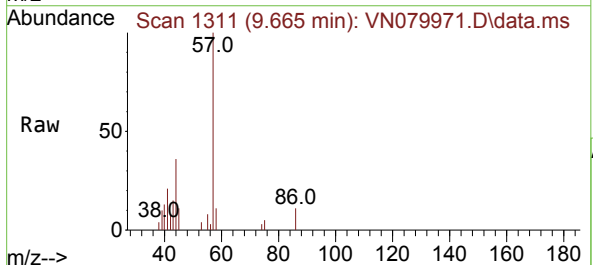
Ion	Ratio	Lower	Upper
43	100		
61	14.8	24.7	37.1#
87	10.1	14.6	21.8#

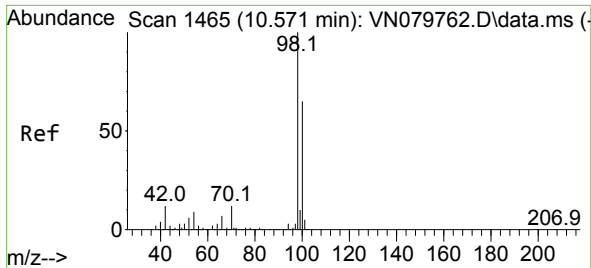


#48
 Methyl methacrylate
 Concen: 0.521 ug/l
 RT: 9.665 min Scan# 1311
 Delta R.T. -0.018 min
 Lab File: VN079971.D
 Acq: 07 Nov 2023 17:46

Tgt Ion: 41 Resp: 2164

Ion	Ratio	Lower	Upper
41	100		
69	0.0	90.4	135.6#
39	68.1	54.6	81.8

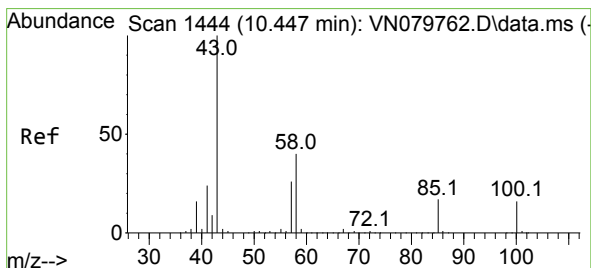
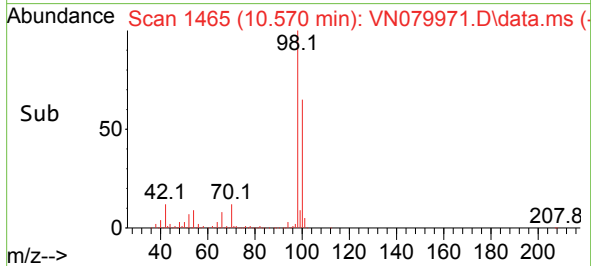
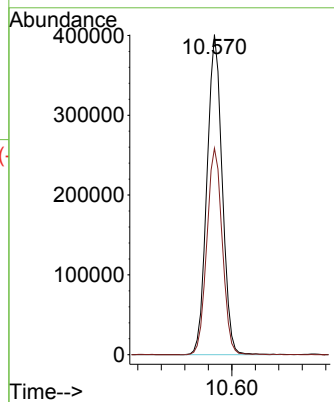
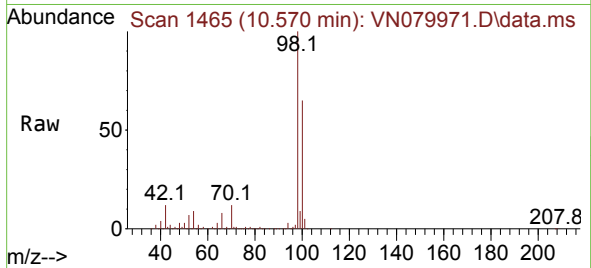




#50
 Toluene-d8
 Concen: 47.427 ug/l
 RT: 10.570 min Scan# 1465
 Delta R.T. -0.000 min
 Lab File: VN079971.D
 Acq: 07 Nov 2023 17:46

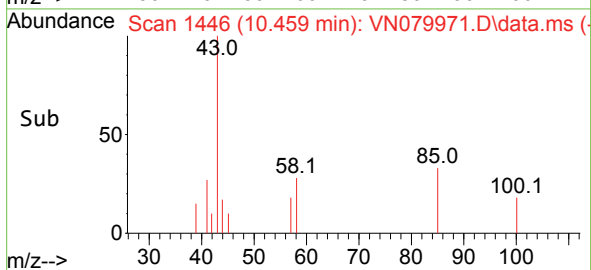
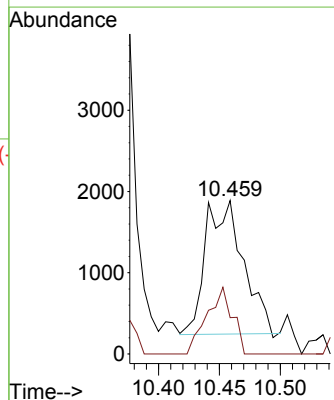
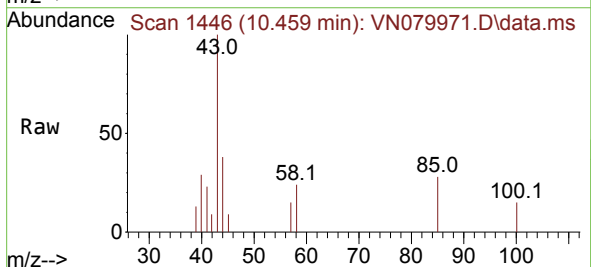
Instrument : MSVOA_N
 ClientSampleId : 1074DL

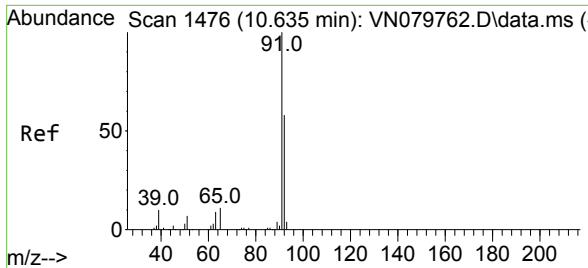
Tgt Ion: 98 Resp: 721265
 Ion Ratio Lower Upper
 98 100
 100 65.3 52.0 78.0



#51
 4-Methyl-2-Pentanone
 Concen: 0.662 ug/l
 RT: 10.459 min Scan# 1446
 Delta R.T. 0.012 min
 Lab File: VN079971.D
 Acq: 07 Nov 2023 17:46

Tgt Ion: 43 Resp: 3538
 Ion Ratio Lower Upper
 43 100
 58 33.9 36.6 54.8#

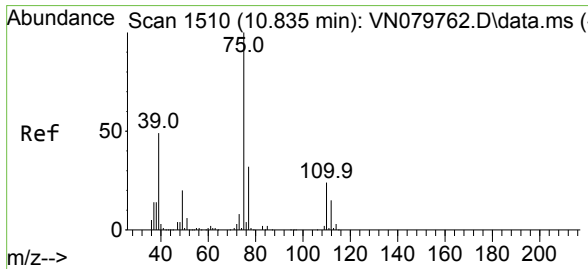
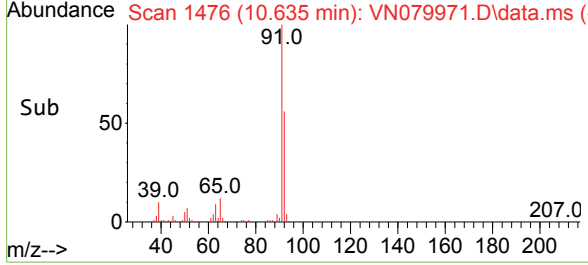
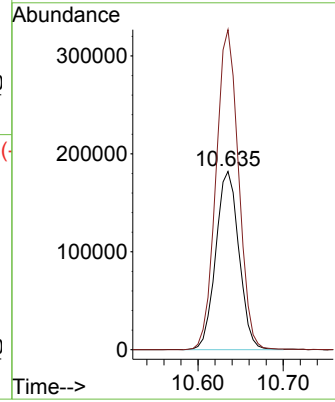
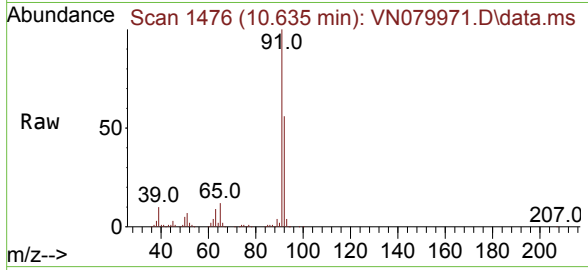




#52
 Toluene
 Concen: 32.827 ug/l
 RT: 10.635 min Scan# 1476
 Delta R.T. -0.000 min
 Lab File: VN079971.D
 Acq: 07 Nov 2023 17:46

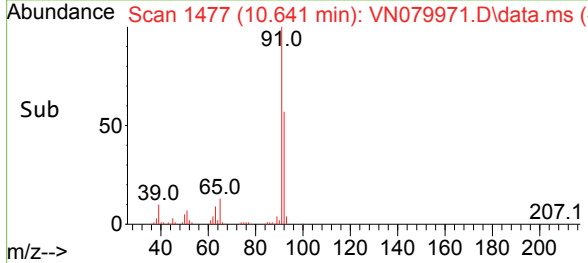
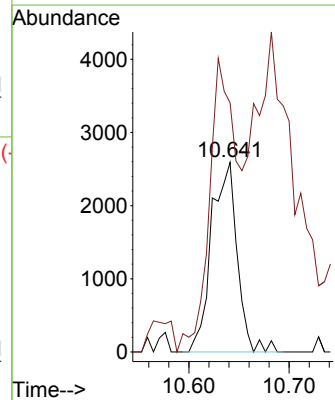
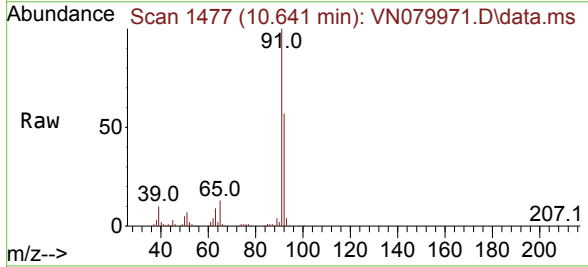
Instrument : MSVOA_N
 ClientSampleId : 1074DL

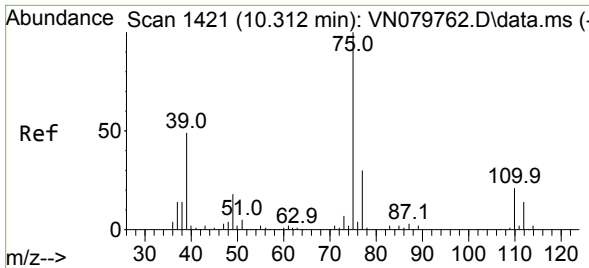
Tgt Ion: 92 Resp: 343817
 Ion Ratio Lower Upper
 92 100
 91 175.3 137.4 206.0



#53
 t-1,3-Dichloropropene
 Concen: 0.717 ug/l
 RT: 10.641 min Scan# 1477
 Delta R.T. -0.200 min
 Lab File: VN079971.D
 Acq: 07 Nov 2023 17:46

Tgt Ion: 75 Resp: 4624
 Ion Ratio Lower Upper
 75 100
 77 121.8 25.4 38.0#

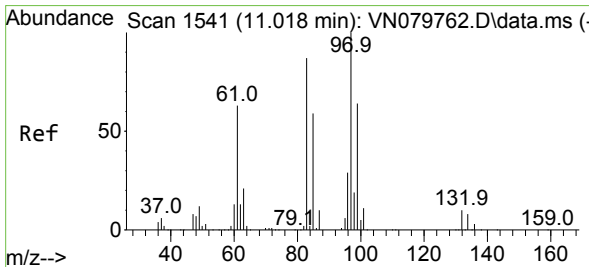
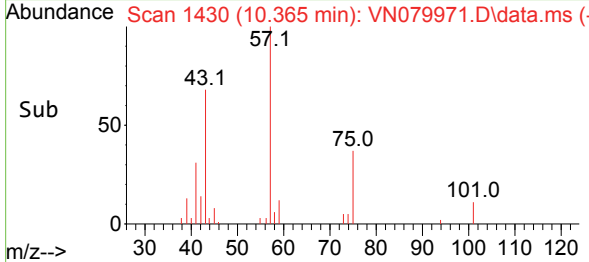
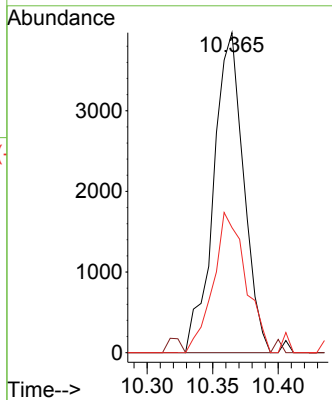
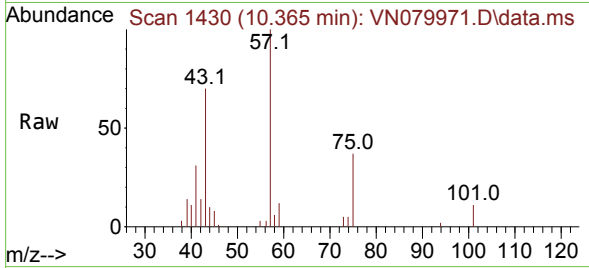




#54
 cis-1,3-Dichloropropene
 Concen: 0.900 ug/l
 RT: 10.365 min Scan# 14
 Delta R.T. 0.047 min
 Lab File: VN079971.D
 Acq: 07 Nov 2023 17:46

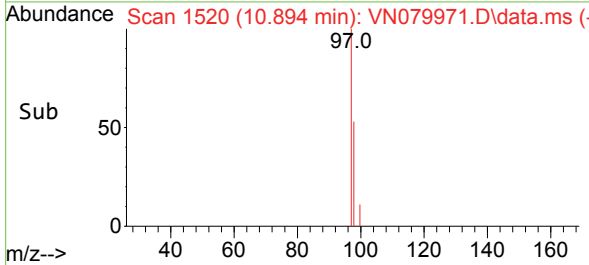
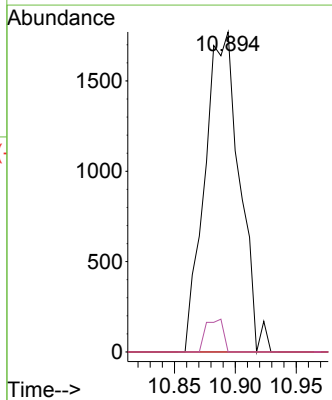
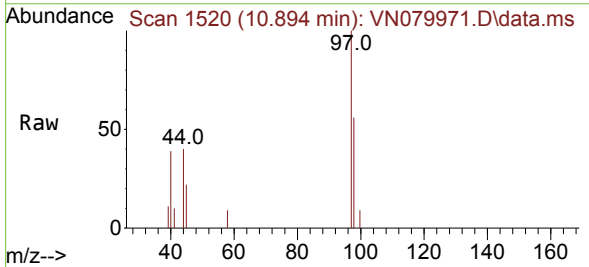
Instrument : MSVOA_N
 ClientSampleId : 1074DL

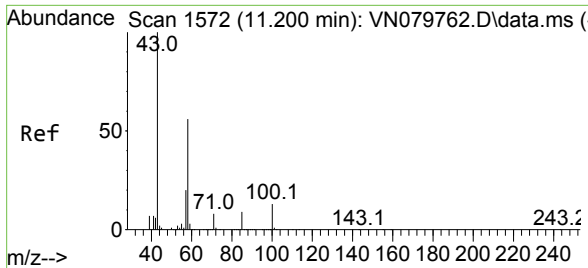
Tgt Ion	Resp	Lower	Upper
75	6321		
77	100	0.0	26.1
39	39.1	31.6	47.4



#55
 1,1,2-Trichloroethane
 Concen: 0.837 ug/l
 RT: 10.894 min Scan# 1520
 Delta R.T. -0.124 min
 Lab File: VN079971.D
 Acq: 07 Nov 2023 17:46

Tgt Ion	Resp	Lower	Upper
97	3524		
83	100	0.0	65.1
85	0.0	43.4	65.2#
99	0.0	49.2	73.8#

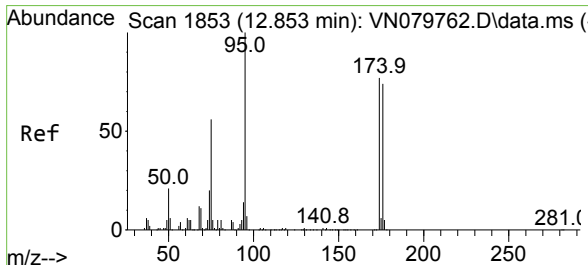
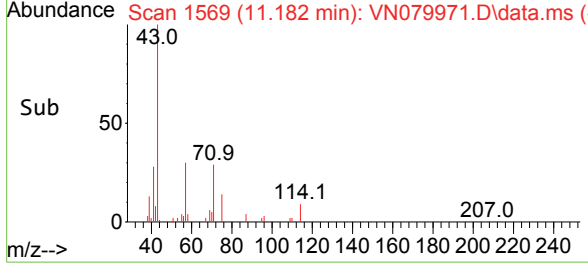
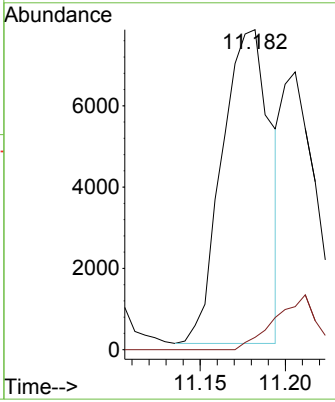
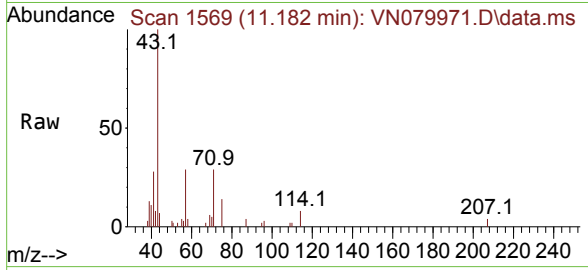




#59
 2-Hexanone
 Concen: 3.738 ug/l
 RT: 11.182 min Scan# 111
 Delta R.T. -0.018 min
 Lab File: VN079971.D
 Acq: 07 Nov 2023 17:46

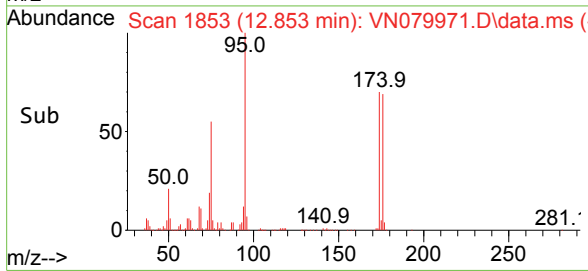
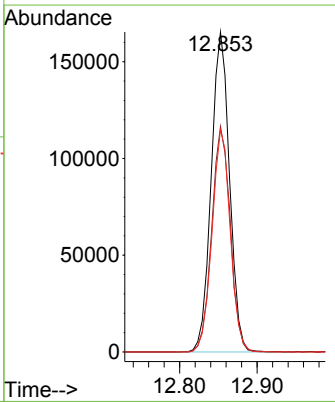
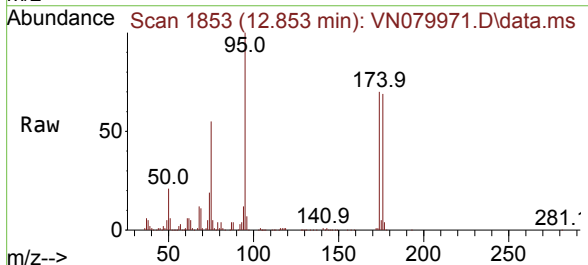
Instrument : MSVOA_N
 ClientSampleId : 1074DL

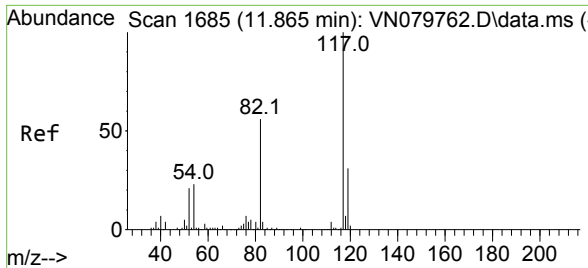
Tgt Ion: 43 Resp: 15275
 Ion Ratio Lower Upper
 43 100
 58 0.0 31.7 95.1#



#62
 4-Bromofluorobenzene
 Concen: 53.938 ug/l
 RT: 12.853 min Scan# 1853
 Delta R.T. -0.000 min
 Lab File: VN079971.D
 Acq: 07 Nov 2023 17:46

Tgt Ion: 95 Resp: 272049
 Ion Ratio Lower Upper
 95 100
 174 71.4 0.0 143.8
 176 68.9 0.0 135.8



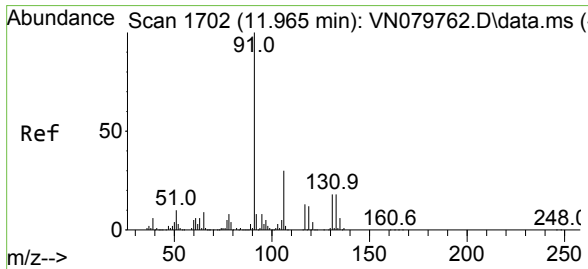
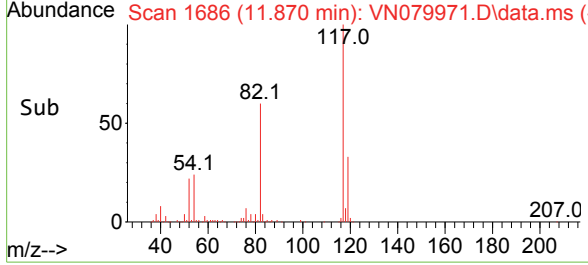
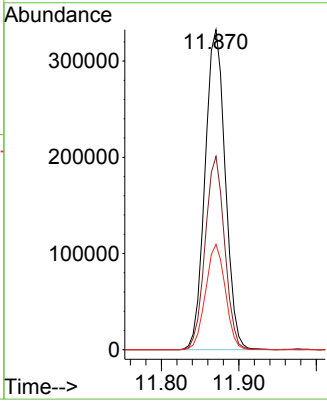
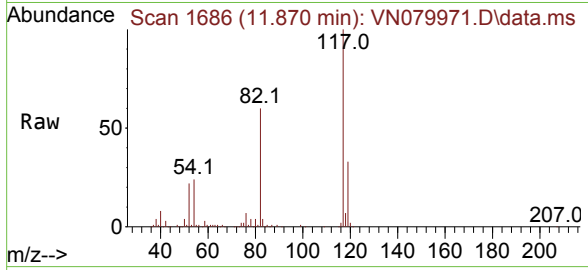


#63
 Chlorobenzene-d5
 Concen: 50.000 ug/l
 RT: 11.870 min Scan# 117
 Delta R.T. -0.000 min
 Lab File: VN079971.D
 Acq: 07 Nov 2023 17:46

Instrument : MSVOA_N
 ClientSampleId : 1074DL

Tgt Ion:117 Resp: 601413

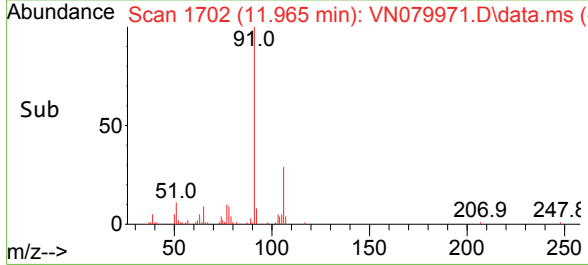
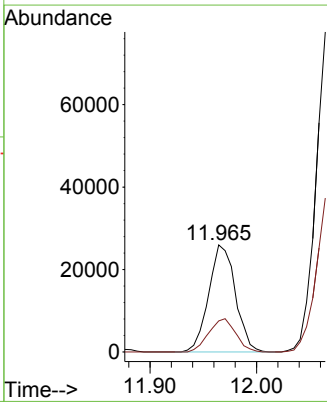
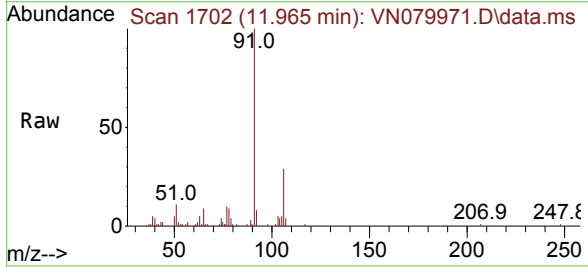
Ion	Ratio	Lower	Upper
117	100		
82	60.4	44.0	66.0
119	32.9	25.6	38.4

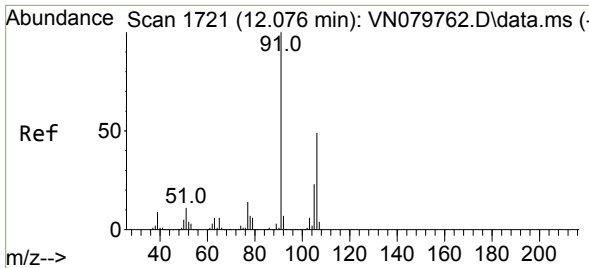


#67
 Ethyl Benzene
 Concen: 1.988 ug/l
 RT: 11.965 min Scan# 1702
 Delta R.T. -0.000 min
 Lab File: VN079971.D
 Acq: 07 Nov 2023 17:46

Tgt Ion: 91 Resp: 45184

Ion	Ratio	Lower	Upper
91	100		
106	29.0	25.6	38.4

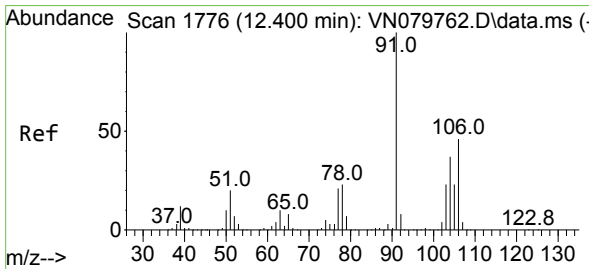
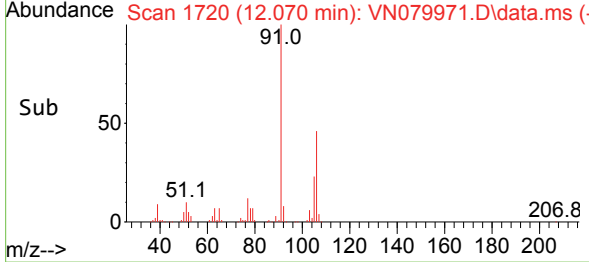
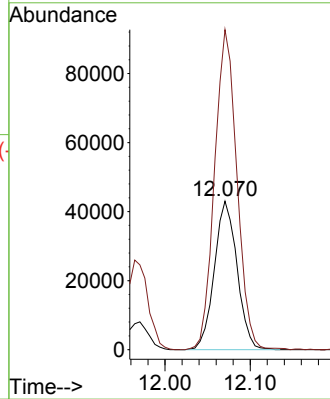
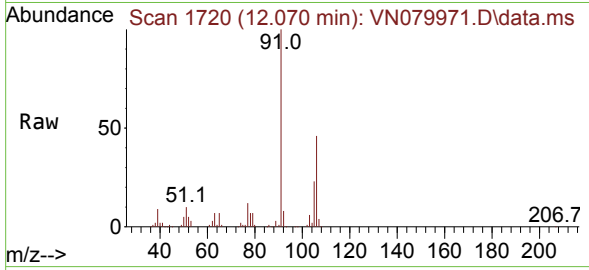




#68
 m/p-Xylenes
 Concen: 9.420 ug/l
 RT: 12.070 min Scan# 1721
 Delta R.T. -0.000 min
 Lab File: VN079971.D
 Acq: 07 Nov 2023 17:46

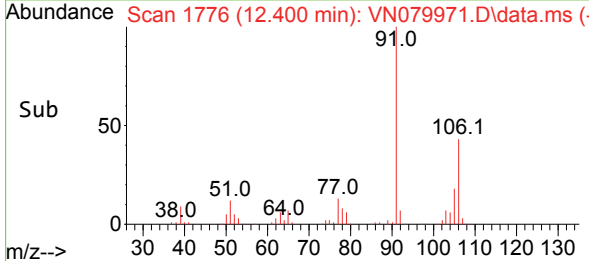
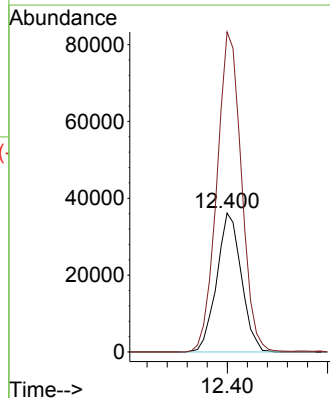
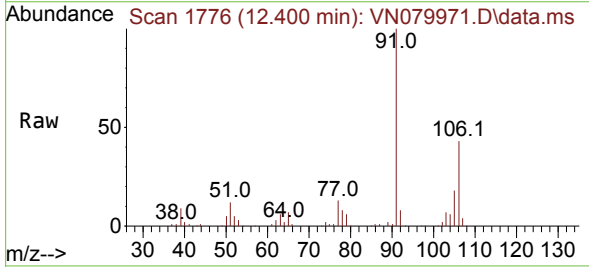
Instrument : MSVOA_N
 ClientSampleId : 1074DL

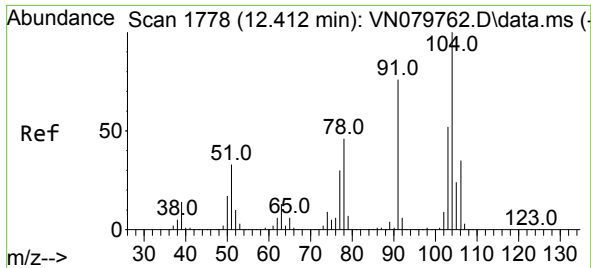
Tgt Ion:106 Resp: 79758
 Ion Ratio Lower Upper
 106 100
 91 212.1 159.6 239.4



#69
 o-Xylene
 Concen: 7.551 ug/l
 RT: 12.400 min Scan# 1776
 Delta R.T. -0.000 min
 Lab File: VN079971.D
 Acq: 07 Nov 2023 17:46

Tgt Ion:106 Resp: 61564
 Ion Ratio Lower Upper
 106 100
 91 230.2 105.2 315.5

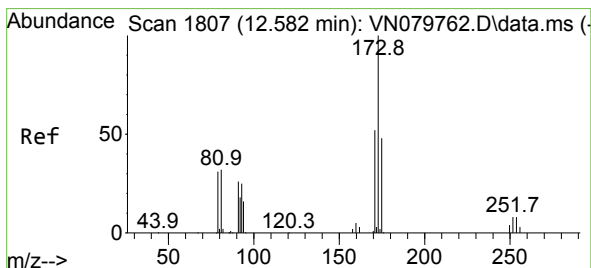
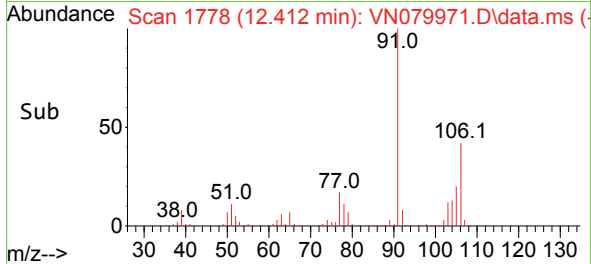
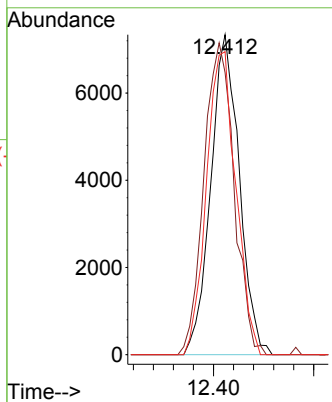
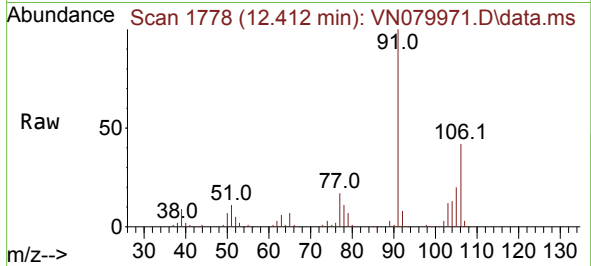




#70
 Styrene
 Concen: 1.107 ug/l
 RT: 12.412 min Scan# 11
 Delta R.T. -0.000 min
 Lab File: VN079971.D
 Acq: 07 Nov 2023 17:46

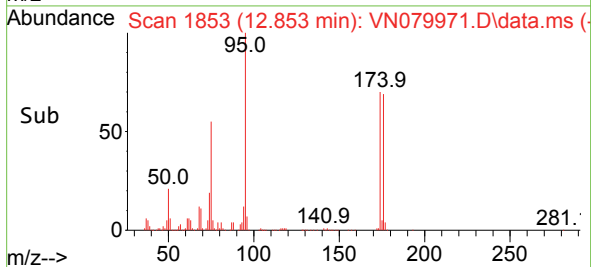
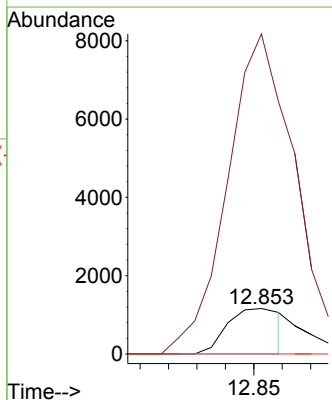
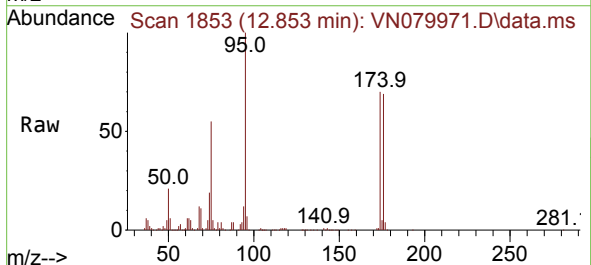
Instrument : MSVOA_N
 ClientSampleId : 1074DL

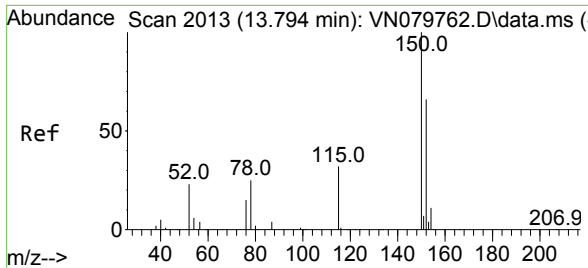
Tgt Ion	Resp	Lower	Upper
104	14507		
104	100		
78	103.2	39.5	59.3#
103	97.9	43.2	64.8#



#71
 Bromoform
 Concen: 0.457 ug/l
 RT: 12.853 min Scan# 1853
 Delta R.T. 0.271 min
 Lab File: VN079971.D
 Acq: 07 Nov 2023 17:46

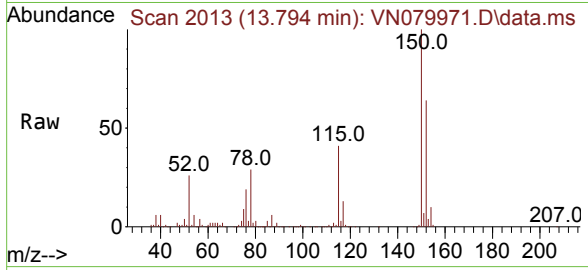
Tgt Ion	Resp	Lower	Upper
173	1526		
173	100		
175	683.4	24.3	73.0#
254	0.0	0.0	0.0



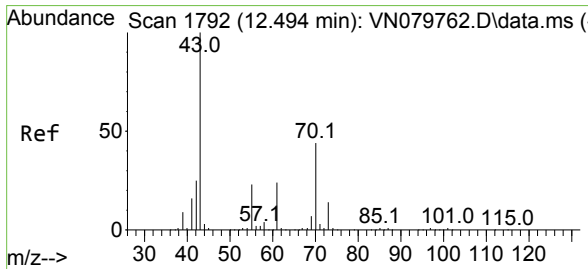
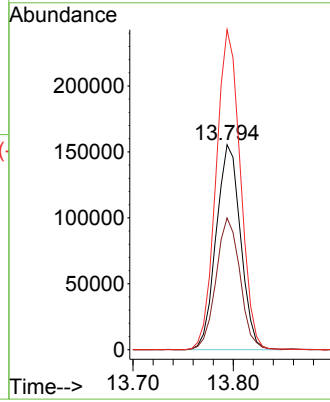
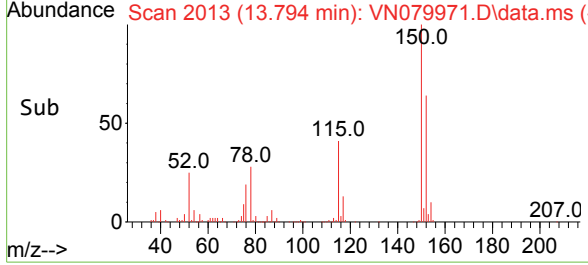


#72
 1,4-Dichlorobenzene-d4
 Concen: 50.000 ug/l
 RT: 13.794 min Scan# 20
 Delta R.T. -0.000 min
 Lab File: VN079971.D
 Acq: 07 Nov 2023 17:46

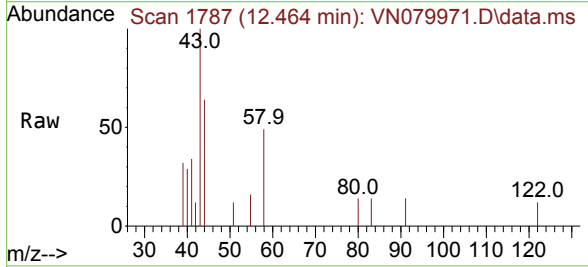
Instrument : MSVOA_N
 ClientSampleId : 1074DL



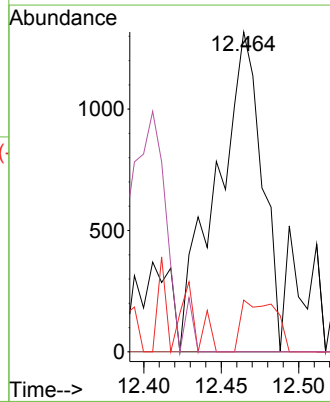
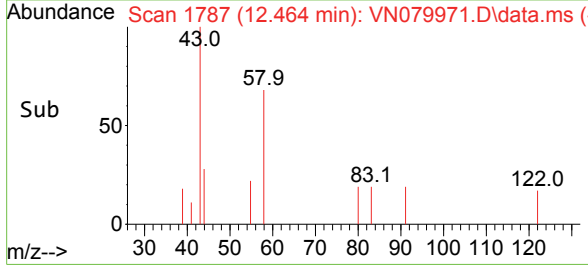
Tgt Ion:152 Resp: 262227
 Ion Ratio Lower Upper
 152 100
 115 63.5 32.3 96.8
 150 155.3 0.0 355.8

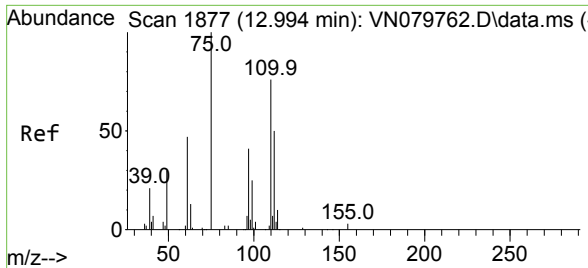


#74
 N-amy1 acetate
 Concen: 0.308 ug/l
 RT: 12.464 min Scan# 1787
 Delta R.T. -0.029 min
 Lab File: VN079971.D
 Acq: 07 Nov 2023 17:46



Tgt Ion: 43 Resp: 2678
 Ion Ratio Lower Upper
 43 100
 70 0.0 43.4 65.2#
 55 12.3 21.4 32.0#
 61 0.0 22.8 34.2#

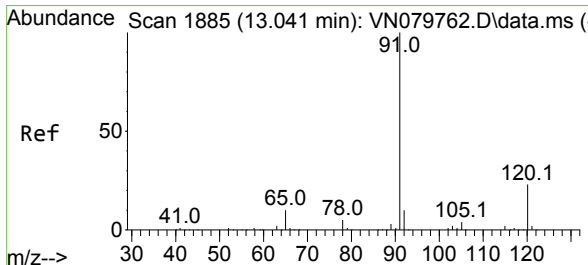
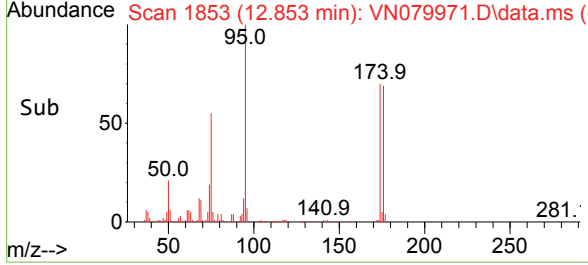
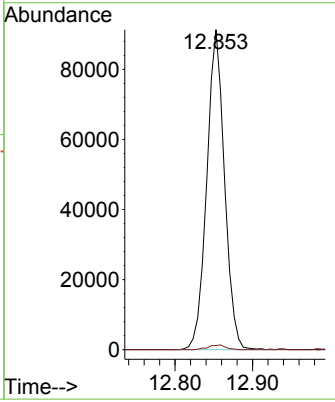
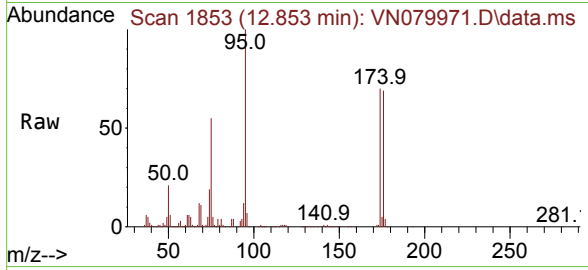




#76
 1,2,3-Trichloropropane
 Concen: 23.571 ug/l
 RT: 12.853 min Scan# 1853
 Delta R.T. -0.141 min
 Lab File: VN079971.D
 Acq: 07 Nov 2023 17:46

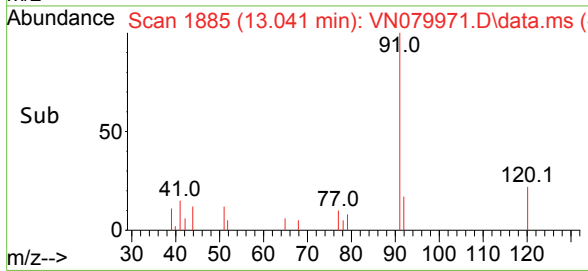
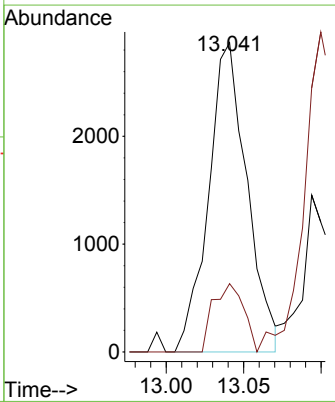
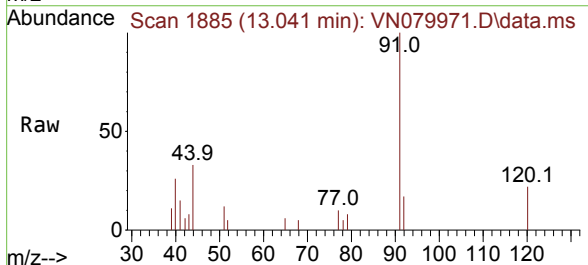
Instrument : MSVOA_N
 ClientSampleId : 1074DL

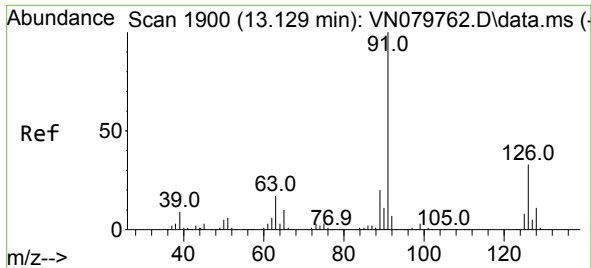
Tgt Ion: 75 Resp: 145110
 Ion Ratio Lower Upper
 75 100
 77 1.5 84.5 253.5#



#78
 n-propylbenzene
 Concen: 0.217 ug/l
 RT: 13.041 min Scan# 1885
 Delta R.T. -0.000 min
 Lab File: VN079971.D
 Acq: 07 Nov 2023 17:46

Tgt Ion: 91 Resp: 4956
 Ion Ratio Lower Upper
 91 100
 120 17.4 11.5 34.4

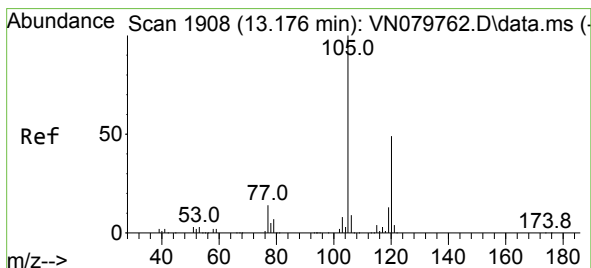
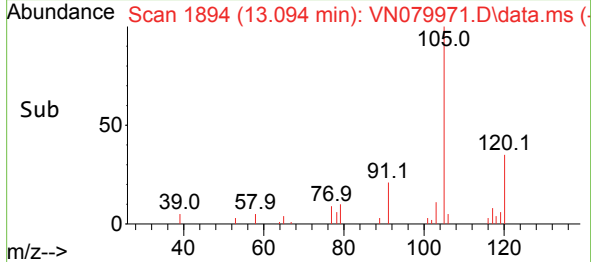
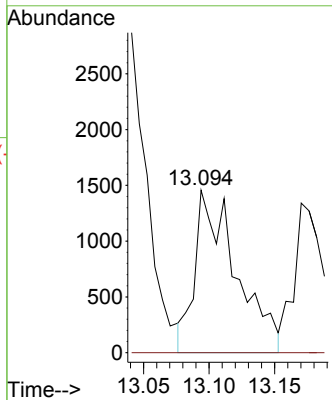
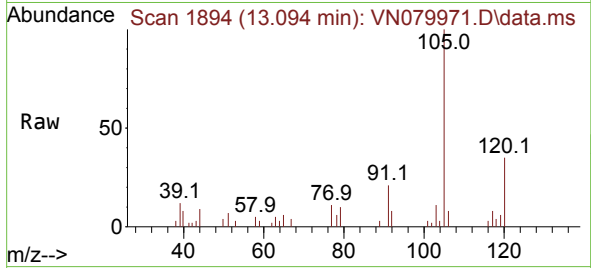




#79
 2-Chlorotoluene
 Concen: 0.219 ug/l
 RT: 13.094 min Scan# 1894
 Delta R.T. -0.035 min
 Lab File: VN079971.D
 Acq: 07 Nov 2023 17:46

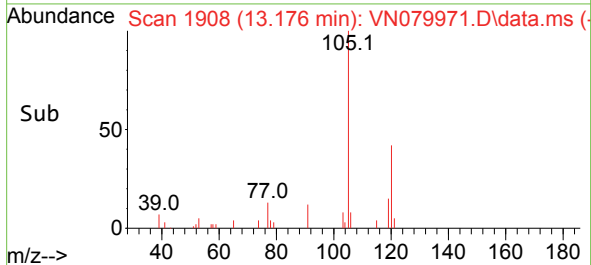
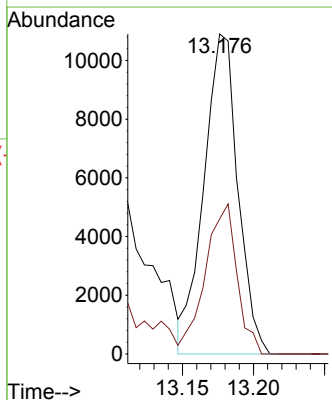
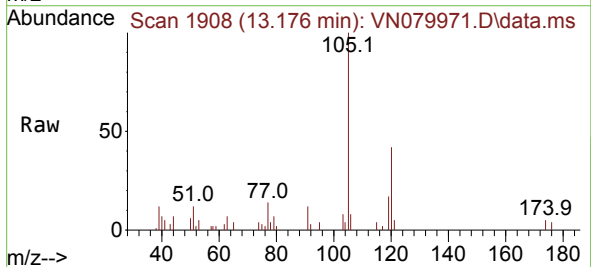
Instrument : MSVOA_N
 ClientSampleId : 1074DL

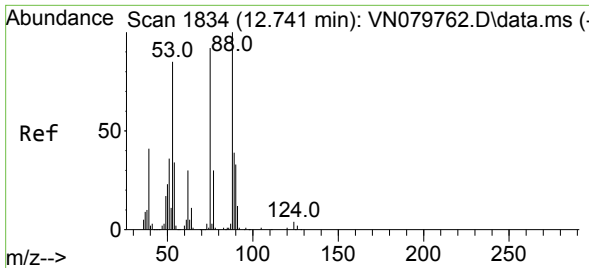
Tgt Ion: 91 Resp: 3187
 Ion Ratio Lower Upper
 91 100
 126 0.0 16.3 48.8#



#80
 1,3,5-Trimethylbenzene
 Concen: 1.171 ug/l
 RT: 13.176 min Scan# 1908
 Delta R.T. -0.000 min
 Lab File: VN079971.D
 Acq: 07 Nov 2023 17:46

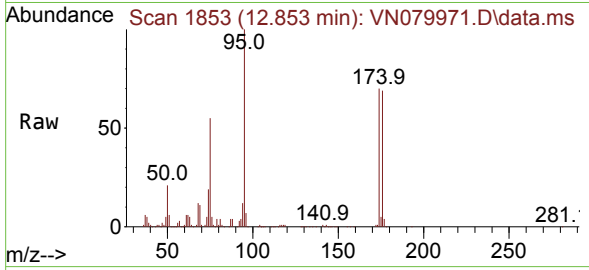
Tgt Ion: 105 Resp: 18127
 Ion Ratio Lower Upper
 105 100
 120 43.7 24.1 72.3



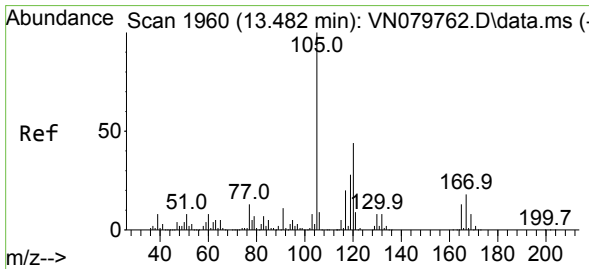
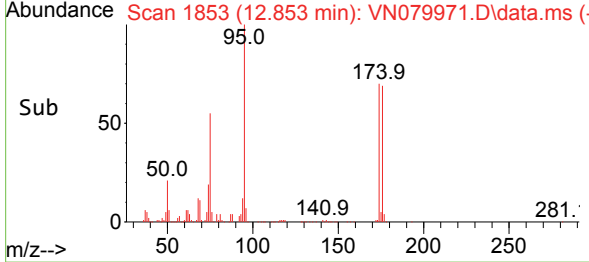
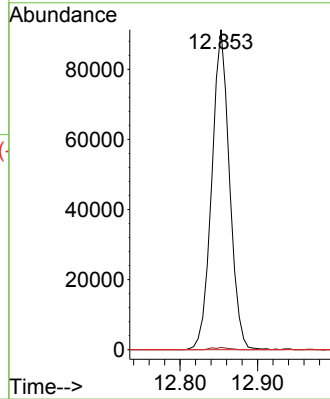


#81
 trans-1,4-Dichloro-2-butene
 Concen: 64.131 ug/l
 RT: 12.853 min Scan# 1853
 Delta R.T. 0.118 min
 Lab File: VN079971.D
 Acq: 07 Nov 2023 17:46

Instrument : MSVOA_N
 ClientSampleId : 1074DL

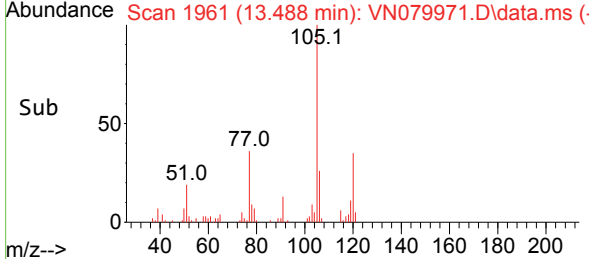
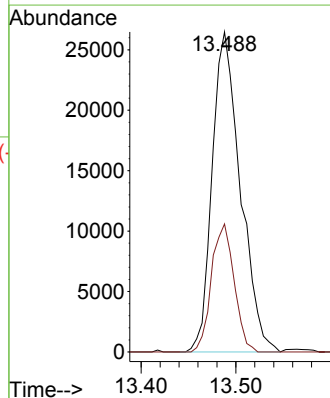
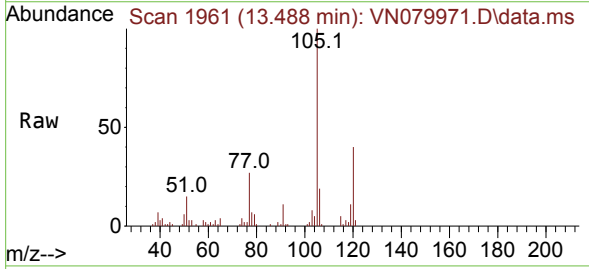


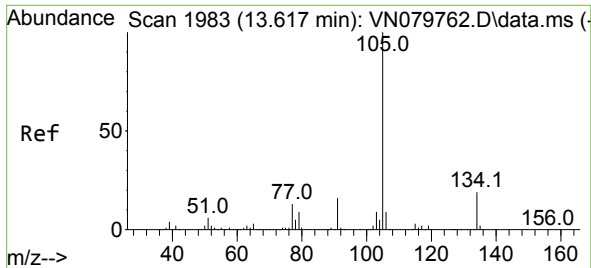
Tgt Ion: 75 Resp: 145110
 Ion Ratio Lower Upper
 75 100
 53 0.6 67.4 101.2#
 89 0.0 38.8 58.2#



#84
 1,2,4-Trimethylbenzene
 Concen: 3.597 ug/l
 RT: 13.488 min Scan# 1961
 Delta R.T. 0.006 min
 Lab File: VN079971.D
 Acq: 07 Nov 2023 17:46

Tgt Ion: 105 Resp: 54793
 Ion Ratio Lower Upper
 105 100
 120 32.1 22.0 66.0

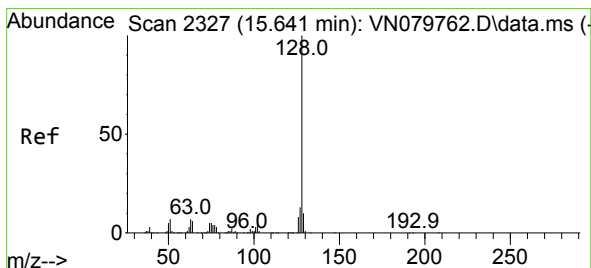
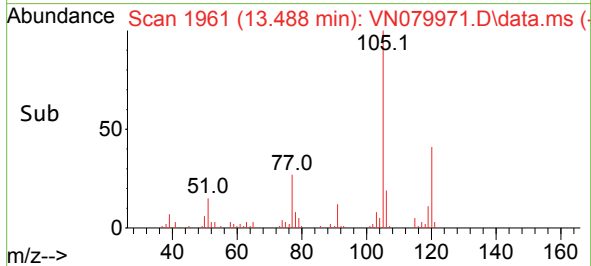
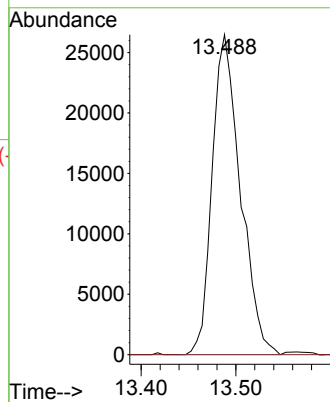
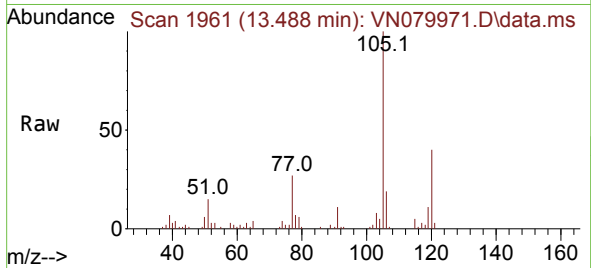




#85
 sec-Butylbenzene
 Concen: 3.120 ug/l
 RT: 13.488 min Scan# 1983
 Delta R.T. -0.129 min
 Lab File: VN079971.D
 Acq: 07 Nov 2023 17:46

Instrument : MSVOA_N
 ClientSampleId : 1074DL

Tgt Ion:105 Resp: 54793
 Ion Ratio Lower Upper
 105 100
 134 0.0 9.8 29.3#



#95
 Naphthalene
 Concen: 74.866 ug/l
 RT: 15.647 min Scan# 2328
 Delta R.T. 0.006 min
 Lab File: VN079971.D
 Acq: 07 Nov 2023 17:46

Tgt Ion:128 Resp: 1032952
 Ion Ratio Lower Upper
 128 100
 127 12.7 10.0 15.0
 129 10.9 8.7 13.1

