

Data Path : Z:\voasrv\HPCHEM1\MSVOA\_N\Data\VN110823\  
 Data File : VN080013.D  
 Acq On : 09 Nov 2023 00:18  
 Operator : JC\MD  
 Sample : 05298-02 10X  
 Misc : 5.0mL/MSVOA\_N/WATER  
 ALS Vial : 32 Sample Multiplier: 1

Instrument :  
 MSVOA\_N  
 ClientSampleId :

Quant Time: Nov 09 04:32:14 2023  
 Quant Method : Z:\voasrv\HPCHEM1\MSVOA\_N\methods\624N110823W.M  
 Quant Title : METHOD 624 VOLATILE ORGANIC ANALYSIS  
 QLast Update : Thu Nov 09 04:02:05 2023  
 Response via : Initial Calibration

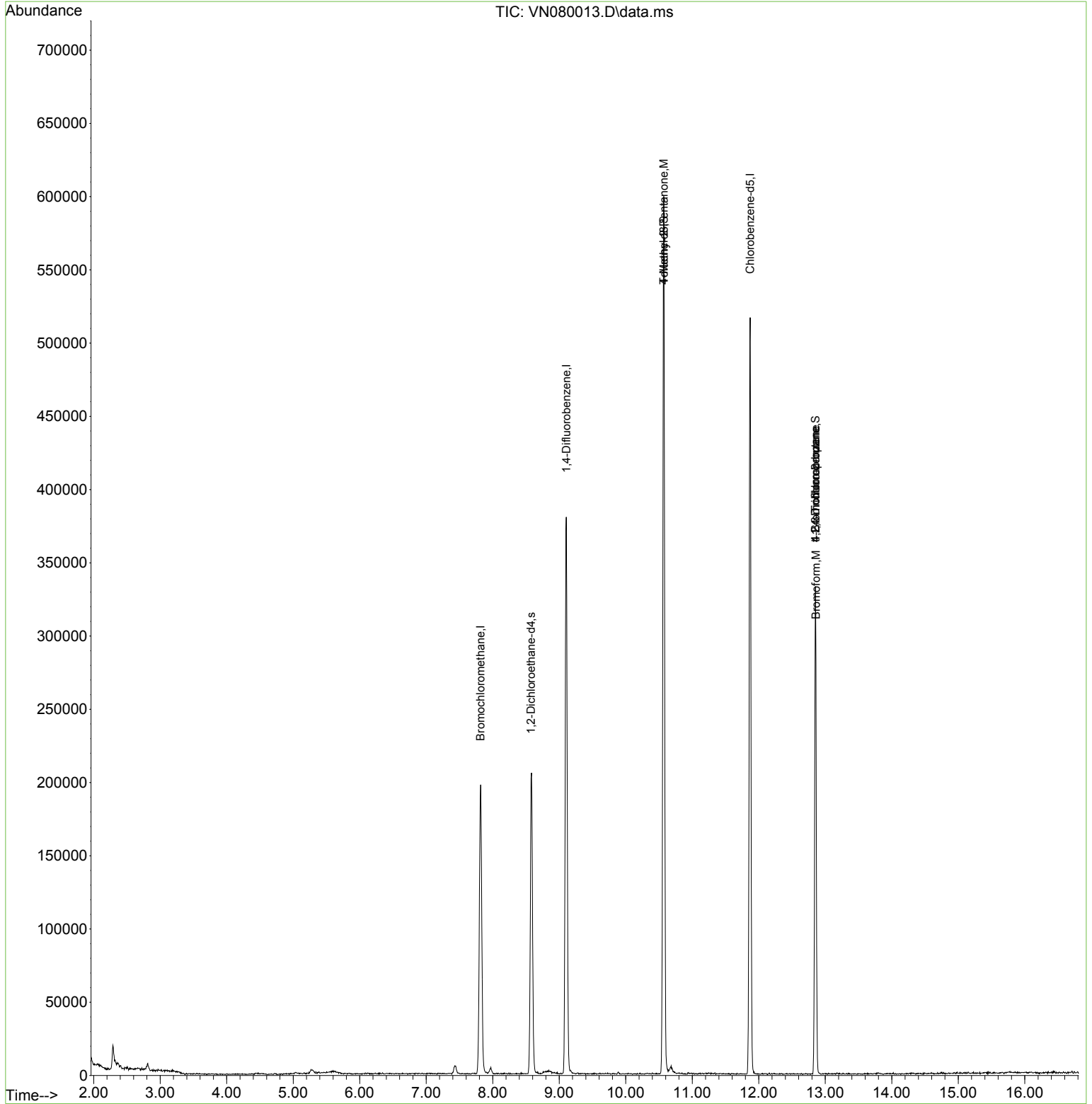
Compound	R.T.	QIon	Response	Conc	Units	Dev(Min)
-----						
Internal Standards						
1) Bromochloromethane	7.818	128	68627	30.000	ug/l	0.00
28) 1,4-Difluorobenzene	9.106	114	318508	30.000	ug/l	0.00
57) Chlorobenzene-d5	11.871	117	300864	30.000	ug/l	0.00
System Monitoring Compounds						
27) 1,2-Dichloroethane-d4	8.577	65	174451	30.283	ug/l	0.00
Spiked Amount	30.000	Range	91 - 110	Recovery	=	100.933%
60) 4-Bromofluorobenzene	12.853	95	112755	23.436	ug/l	0.00
Spiked Amount	30.000	Range	63 - 112	Recovery	=	78.133%
63) Toluene-d8	10.571	98	402905	28.263	ug/l	0.00
Spiked Amount	30.000	Range	91 - 112	Recovery	=	94.200%
Target Compounds						
						Qvalue
56) Bromoform	12.859	173	1263	0.475	ug/l #	1
58) 4-Methyl-2-Pentanone	10.571	43	2002	0.398	ug/l #	1
72) 1,2,3-Trichloropropane	12.853	75	62170	12.070	ug/l	1
77) t-1,4-Dichloro-2-butene	12.853	75	62170	36.861	ug/l #	7
-----						

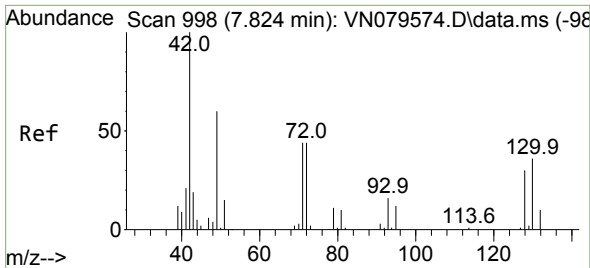
(#) = qualifier out of range (m) = manual integration (+) = signals summed

Data Path : Z:\voasrv\HPCHEM1\MSVOA\_N\Data\VN110823\  
 Data File : VN080013.D  
 Acq On : 09 Nov 2023 00:18  
 Operator : JC\MD  
 Sample : 05298-02 10X  
 Misc : 5.0mL/MSVOA\_N/WATER  
 ALS Vial : 32 Sample Multiplier: 1

Instrument :  
 MSVOA\_N  
 ClientSampleId :

Quant Time: Nov 09 04:32:14 2023  
 Quant Method : Z:\voasrv\HPCHEM1\MSVOA\_N\methods\624N110823W.M  
 Quant Title : METHOD 624 VOLATILE ORGANIC ANALYSIS  
 QLast Update : Thu Nov 09 04:02:05 2023  
 Response via : Initial Calibration



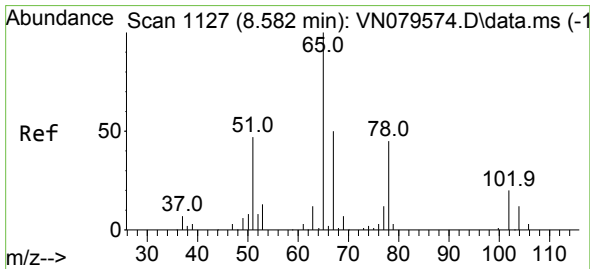
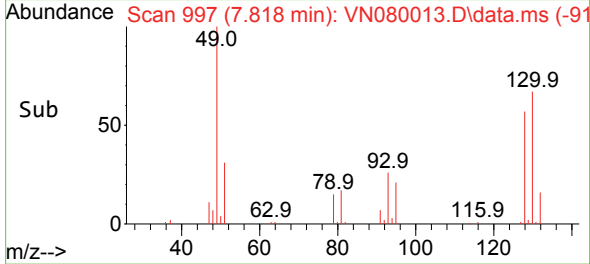
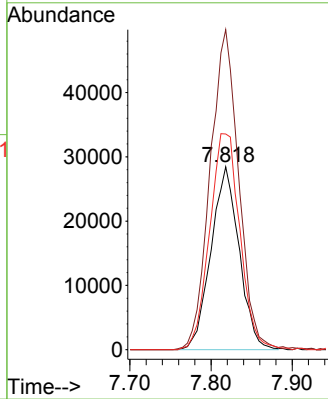
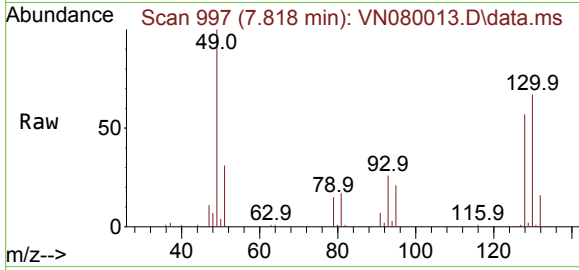


#1  
 Bromochloromethane  
 Concen: 30.000 ug/l  
 RT: 7.818 min Scan# 91  
 Delta R.T. -0.006 min  
 Lab File: VN080013.D  
 Acq: 09 Nov 2023 00:18

Instrument :  
 MSVOA\_N  
 ClientSampleId :

Tgt Ion:128 Resp: 68627

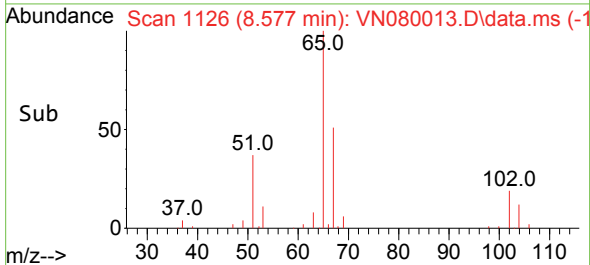
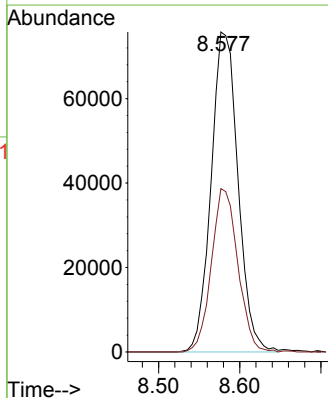
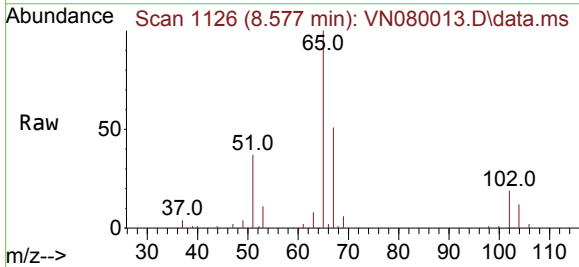
Ion	Ratio	Lower	Upper
128	100		
49	177.1	0.0	468.5
130	127.1	0.0	320.7

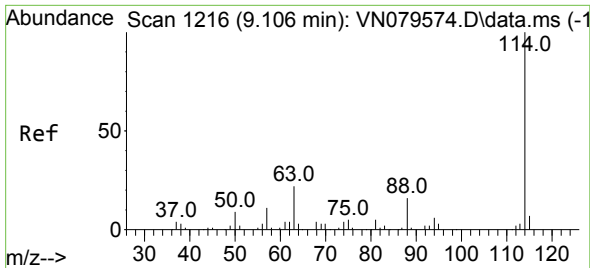


#27  
 1,2-Dichloroethane-d4  
 Concen: 30.283 ug/l  
 RT: 8.577 min Scan# 1126  
 Delta R.T. -0.005 min  
 Lab File: VN080013.D  
 Acq: 09 Nov 2023 00:18

Tgt Ion: 65 Resp: 174451

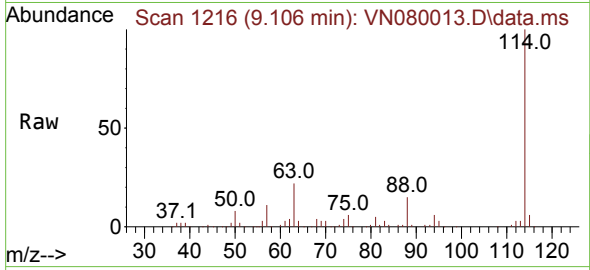
Ion	Ratio	Lower	Upper
65	100		
67	50.1	42.1	63.1



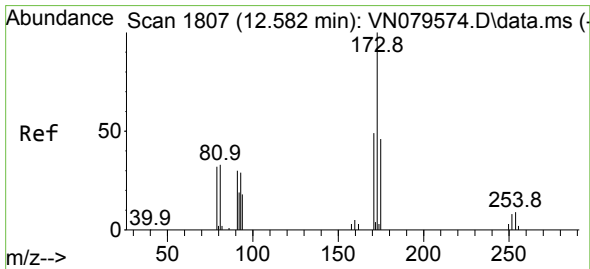
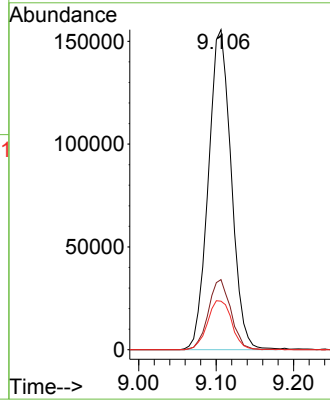
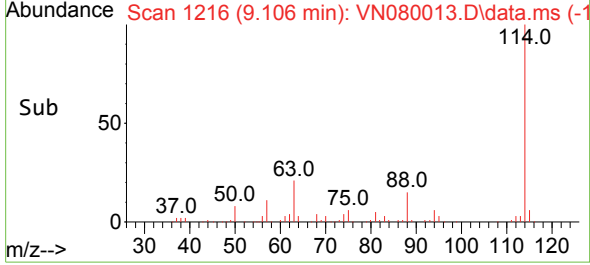


#28  
 1,4-Difluorobenzene  
 Concen: 30.000 ug/l  
 RT: 9.106 min Scan# 11  
 Delta R.T. 0.000 min  
 Lab File: VN080013.D  
 Acq: 09 Nov 2023 00:18

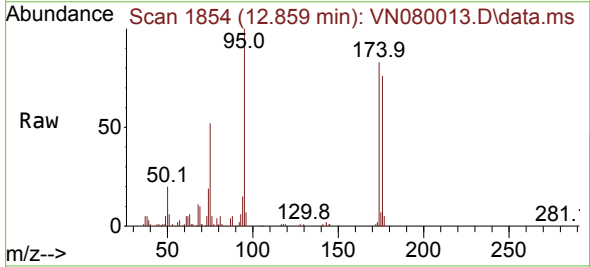
Instrument :  
 MSVOA\_N  
 ClientSampleId :



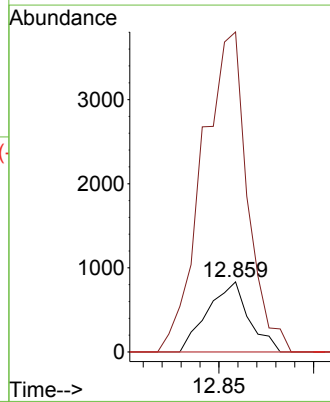
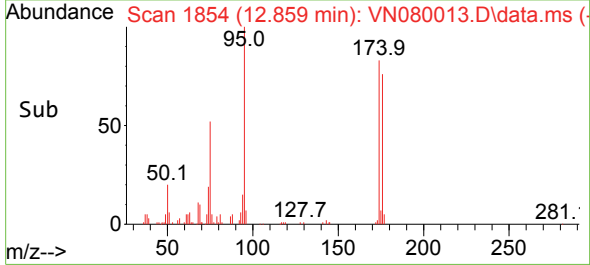
Tgt Ion:114 Resp: 318508  
 Ion Ratio Lower Upper  
 114 100  
 63 21.5 18.1 27.1  
 88 16.3 12.2 18.2

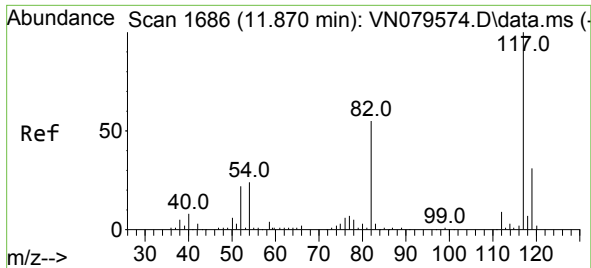


#56  
 Bromoform  
 Concen: 0.475 ug/l  
 RT: 12.859 min Scan# 1854  
 Delta R.T. 0.277 min  
 Lab File: VN080013.D  
 Acq: 09 Nov 2023 00:18



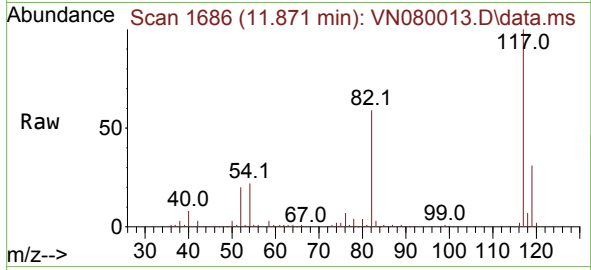
Tgt Ion:173 Resp: 1263  
 Ion Ratio Lower Upper  
 173 100  
 175 501.7 37.9 56.9#  
 254 0.0 7.3 10.9#





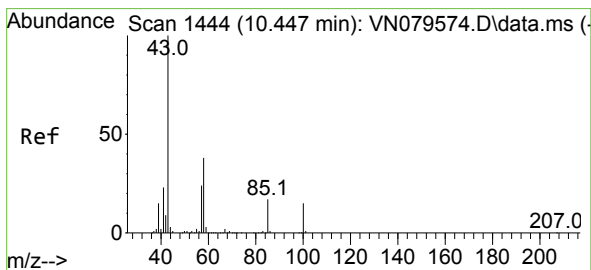
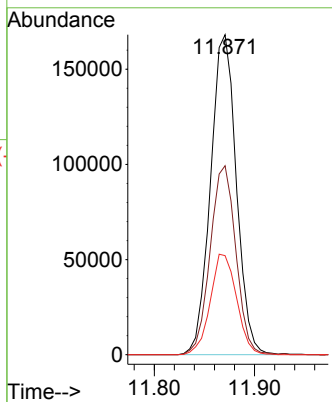
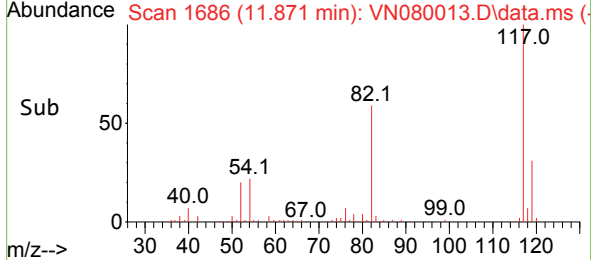
#57  
 Chlorobenzene-d5  
 Concen: 30.000 ug/l  
 RT: 11.871 min Scan# 1  
 Delta R.T. 0.001 min  
 Lab File: VN080013.D  
 Acq: 09 Nov 2023 00:18

Instrument :  
 MSVOA\_N  
 ClientSampleId :

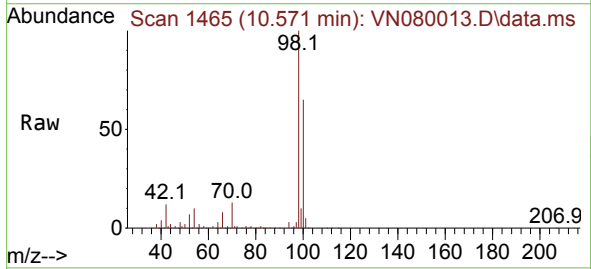


Tgt Ion:117 Resp: 300864

Ion	Ratio	Lower	Upper
117	100		
82	58.8	46.2	69.2
119	32.0	25.2	37.8

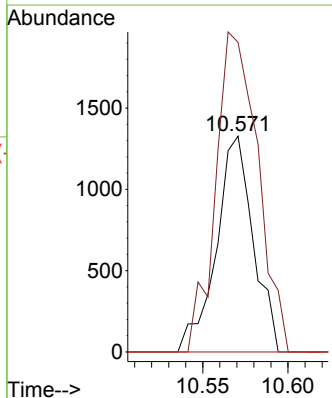
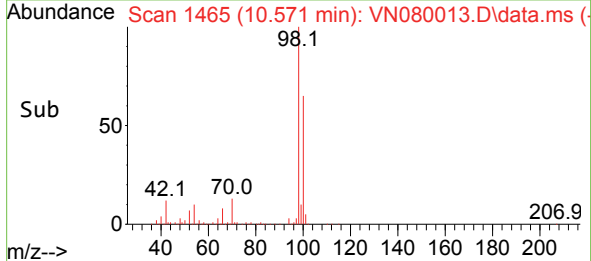


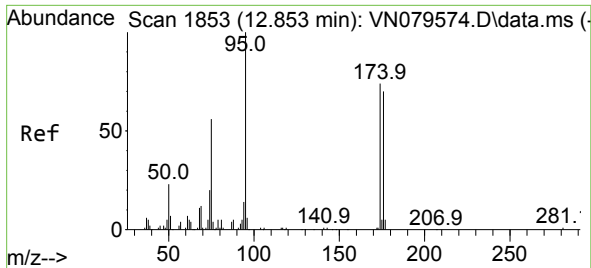
#58  
 4-Methyl-2-Pentanone  
 Concen: 0.398 ug/l  
 RT: 10.571 min Scan# 1465  
 Delta R.T. 0.124 min  
 Lab File: VN080013.D  
 Acq: 09 Nov 2023 00:18



Tgt Ion: 43 Resp: 2002

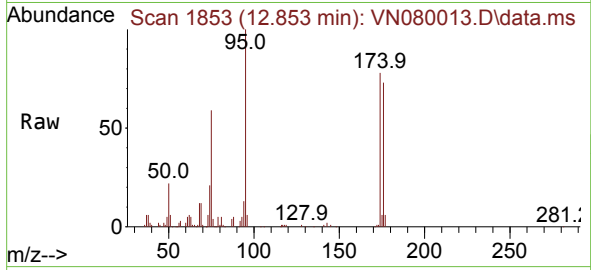
Ion	Ratio	Lower	Upper
43	100		
58	169.2	30.4	45.6#
85	0.0	13.2	19.8#



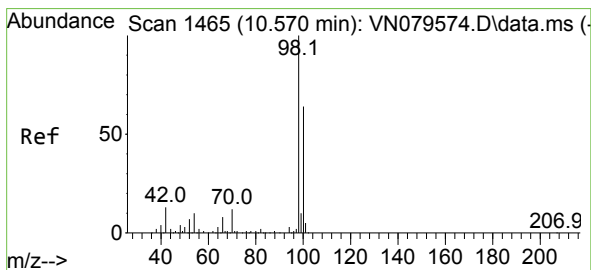
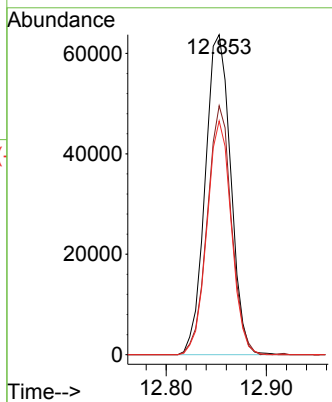
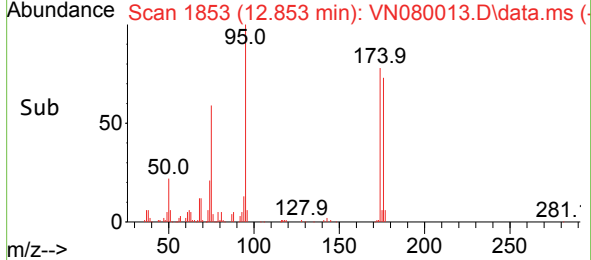


#60  
 4-Bromofluorobenzene  
 Concen: 23.436 ug/l  
 RT: 12.853 min Scan# 11  
 Delta R.T. -0.000 min  
 Lab File: VN080013.D  
 Acq: 09 Nov 2023 00:18

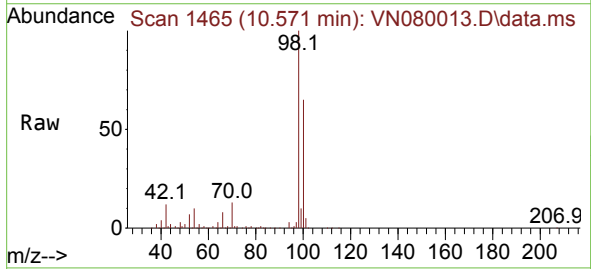
Instrument :  
 MSVOA\_N  
 ClientSampleId :



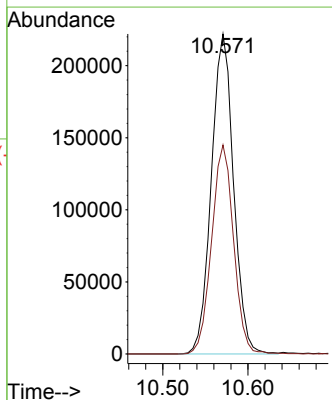
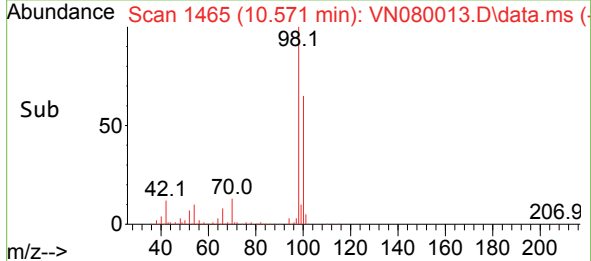
Tgt Ion: 95 Resp: 112755  
 Ion Ratio Lower Upper  
 95 100  
 174 74.1 60.5 90.7  
 176 69.8 57.2 85.8

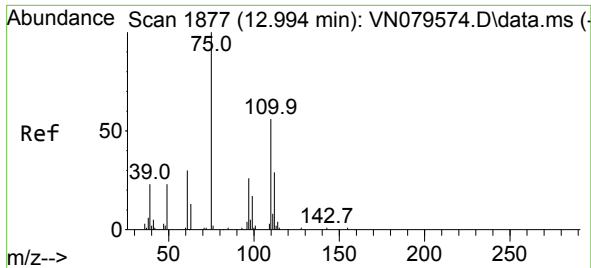


#63  
 Toluene-d8  
 Concen: 28.263 ug/l  
 RT: 10.571 min Scan# 1465  
 Delta R.T. 0.001 min  
 Lab File: VN080013.D  
 Acq: 09 Nov 2023 00:18



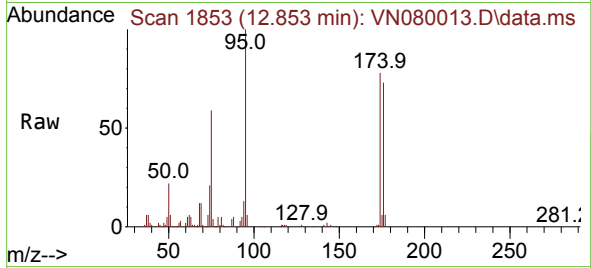
Tgt Ion: 98 Resp: 402905  
 Ion Ratio Lower Upper  
 98 100  
 100 64.2 51.6 77.4



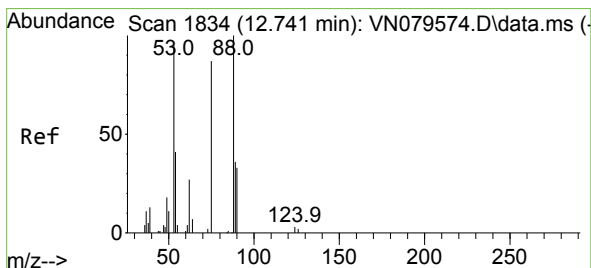
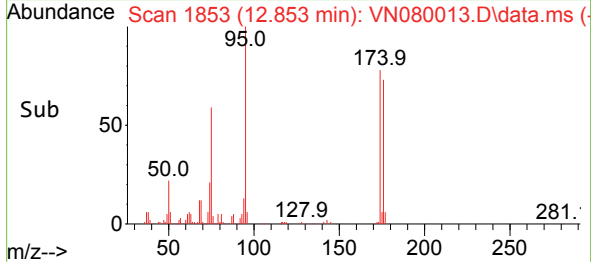
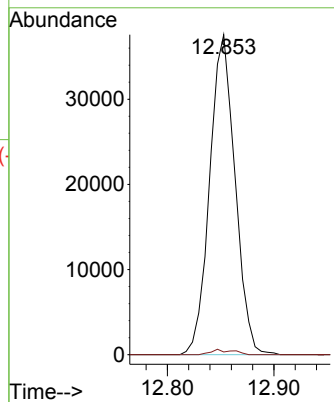


#72  
 1,2,3-Trichloropropane  
 Concen: 12.070 ug/l  
 RT: 12.853 min Scan# 1853  
 Delta R.T. -0.141 min  
 Lab File: VN080013.D  
 Acq: 09 Nov 2023 00:18

Instrument : MSVOA\_N  
 ClientSampleId :



Tgt Ion: 75 Resp: 62170  
 Ion Ratio Lower Upper  
 75 100  
 77 0.8 0.0 338.2



#77  
 t-1,4-Dichloro-2-butene  
 Concen: 36.861 ug/l  
 RT: 12.853 min Scan# 1853  
 Delta R.T. 0.112 min  
 Lab File: VN080013.D  
 Acq: 09 Nov 2023 00:18

Tgt Ion: 75 Resp: 62170  
 Ion Ratio Lower Upper  
 75 100  
 53 0.0 53.0 159.1#  
 89 0.0 22.6 67.7#

