

Data Path : Z:\voasrv\HPCHEM1\MSVOA\_N\Data\VN110922\  
 Data File : VN075212.D  
 Acq On : 09 Nov 2022 12:49  
 Operator : JC\MD  
 Sample : VN1109WBL01  
 Misc : 5.0mL/MSVOA\_N/WATER  
 ALS Vial : 3 Sample Multiplier: 1

Instrument :  
 MSVOA\_N  
 ClientSampleId :  
 VN1109WBL01

Quant Time: Nov 10 02:40:45 2022  
 Quant Method : Z:\voasrv\HPCHEM1\MSVOA\_N\methods\82N102622W.M  
 Quant Title : SW846 8260  
 QLast Update : Thu Oct 27 09:48:49 2022  
 Response via : Initial Calibration

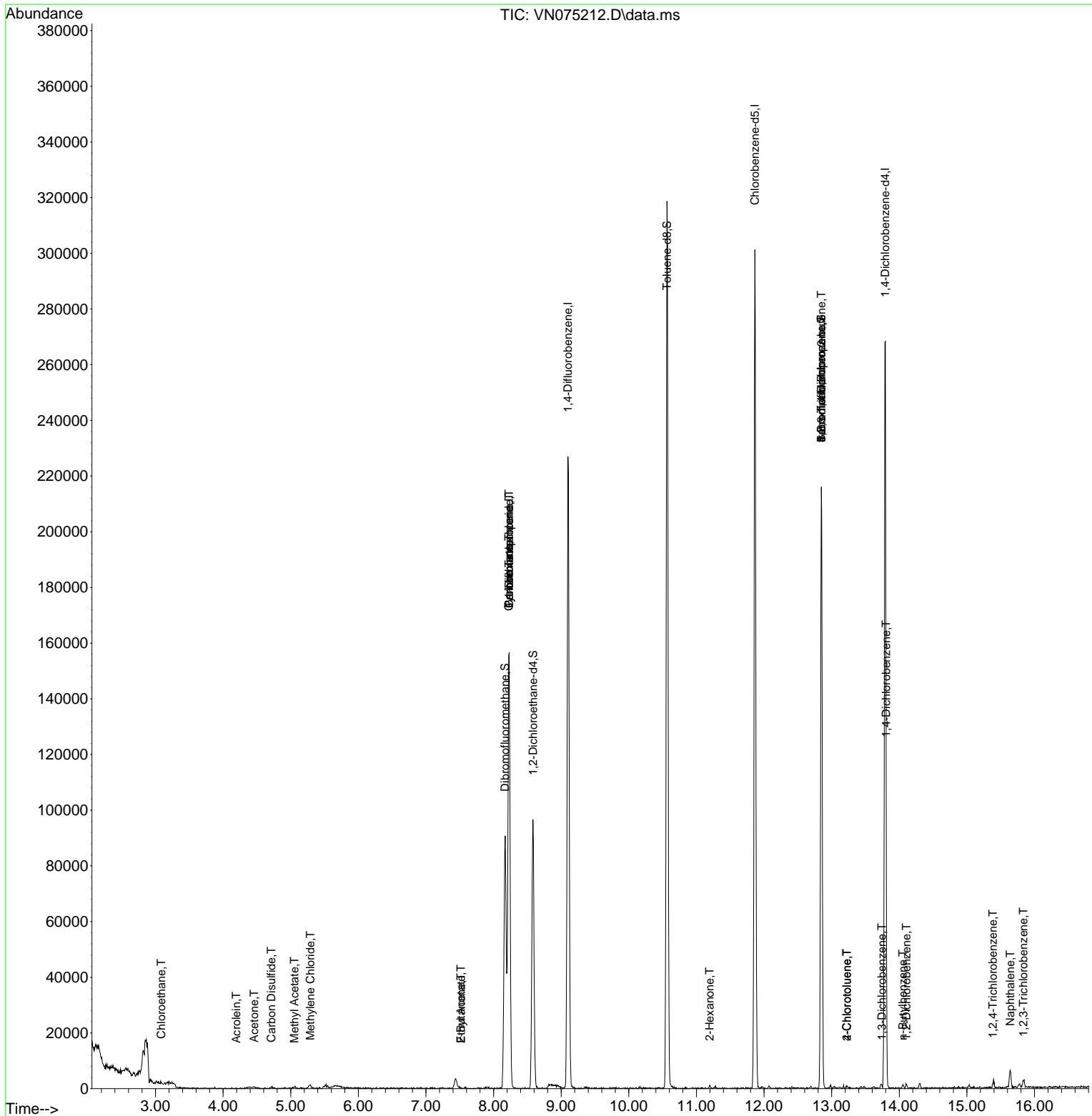
Compound	R.T.	QIon	Response	Conc	Units	Dev(Min)
-----						
Internal Standards						
1) Pentafluorobenzene	8.230	168	113533	50.000	ug/l	0.00
34) 1,4-Difluorobenzene	9.100	114	206325	50.000	ug/l	0.00
63) Chlorobenzene-d5	11.865	117	175416	50.000	ug/l	0.00
72) 1,4-Dichlorobenzene-d4	13.794	152	73189	50.000	ug/l	0.00
System Monitoring Compounds						
33) 1,2-Dichloroethane-d4	8.583	65	78221	51.134	ug/l	0.00
Spiked Amount	50.000	Range	74 - 125	Recovery	=	102.260%
35) Dibromofluoromethane	8.171	113	64856	53.545	ug/l	0.00
Spiked Amount	50.000	Range	75 - 124	Recovery	=	107.100%
50) Toluene-d8	10.565	98	228487	48.622	ug/l	0.00
Spiked Amount	50.000	Range	86 - 113	Recovery	=	97.240%
62) 4-Bromofluorobenzene	12.847	95	74730	45.270	ug/l	0.00
Spiked Amount	50.000	Range	83 - 123	Recovery	=	90.540%
Target Compounds						
					Qvalue	
5) Bromomethane	2.924	94	382	Below Cal	#	5
6) Chloroethane	3.083	64	435	0.271	ug/l #	45
13) Acrolein	4.195	56	62	0.212	ug/l #	15
16) Acetone	4.459	43	191	0.295	ug/l #	43
17) Carbon Disulfide	4.712	76	1026	0.339	ug/l #	74
18) Methyl Acetate	5.053	43	1042	0.492	ug/l #	57
20) Methylene Chloride	5.289	84	870	0.602	ug/l #	48
25) 2-Butanone	7.518	43	477	0.468	ug/l #	45
31) Cyclohexane	8.224	56	2437	1.071	ug/l #	56
36) 1,1-Dichloropropene	8.230	75	9532	5.083	ug/l #	49
37) Ethyl Acetate	7.518	43	477	0.232	ug/l #	66
38) Carbon Tetrachloride	8.230	117	12973	6.289	ug/l #	16
59) 2-Hexanone	11.194	43	858	0.549	ug/l #	71
71) Bromoform	12.847	173	640	0.615	ug/l #	1
75) 1,1,2,2-Tetrachloroethane	12.941	83	56	Below Cal	#	26
76) 1,2,3-Trichloropropane	12.847	75	39858	25.649	ug/l #	1
79) 2-Chlorotoluene	13.223	91	1037	0.257	ug/l #	81
81) trans-1,4-Dichloro-2-b...	12.847	75	39858	65.840	ug/l #	10
82) 4-Chlorotoluene	13.223	91	1037	0.257	ug/l #	81
87) 1,3-Dichlorobenzene	13.741	146	875	0.345	ug/l #	36
88) 1,4-Dichlorobenzene	13.806	146	1405	0.560	ug/l #	62
89) n-Butylbenzene	14.053	91	1059	0.260	ug/l #	83
91) 1,2-Dichlorobenzene	14.106	146	754	0.299	ug/l #	88
93) 1,2,4-Trichlorobenzene	15.382	180	1187	1.095	ug/l #	88
95) Naphthalene	15.641	128	7595	1.823	ug/l #	97
96) 1,2,3-Trichlorobenzene	15.835	180	1500	1.393	ug/l #	82

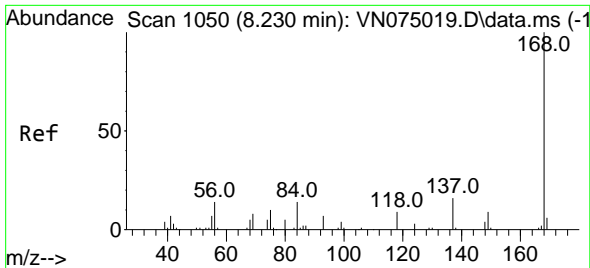
(#) = qualifier out of range (m) = manual integration (+) = signals summed

Data Path : Z:\voasrv\HPCHEM1\MSVOA\_N\Data\VN110922\  
 Data File : VN075212.D  
 Acq On : 09 Nov 2022 12:49  
 Operator : JC\MD  
 Sample : VN1109WBL01  
 Misc : 5.0mL/MSVOA\_N/WATER  
 ALS Vial : 3 Sample Multiplier: 1

Instrument :  
 MSVOA\_N  
 ClientSampleId :  
 VN1109WBL01

Quant Time: Nov 10 02:40:45 2022  
 Quant Method : Z:\voasrv\HPCHEM1\MSVOA\_N\methods\82N102622W.M  
 Quant Title : SW846 8260  
 QLast Update : Thu Oct 27 09:48:49 2022  
 Response via : Initial Calibration

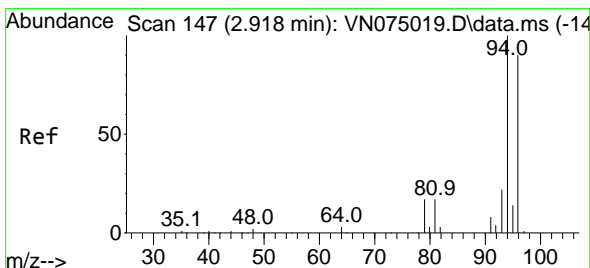
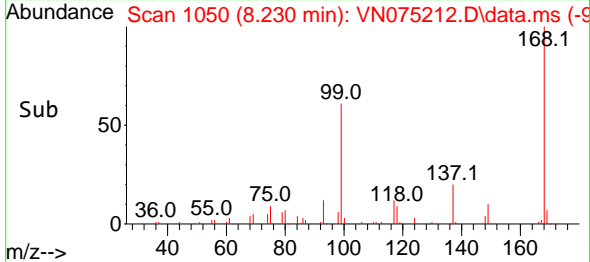
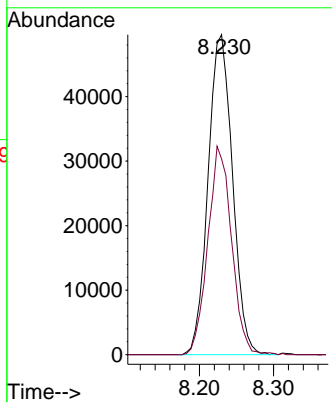
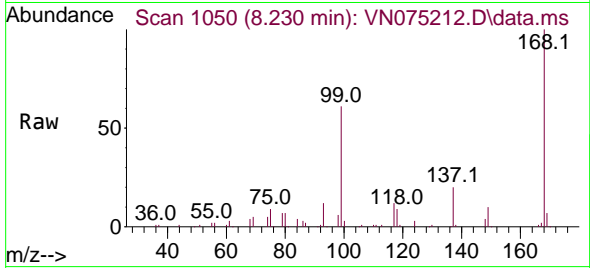




#1  
 Pentafluorobenzene  
 Concen: 50.000 ug/l  
 RT: 8.230 min Scan# 10  
 Delta R.T. -0.000 min  
 Lab File: VN075212.D  
 Acq: 09 Nov 2022 12:49

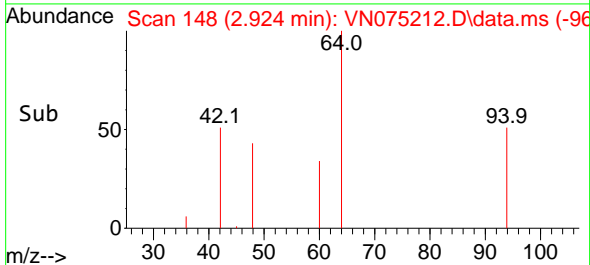
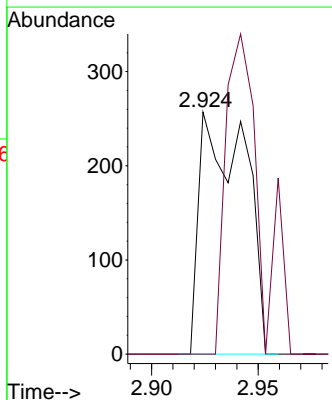
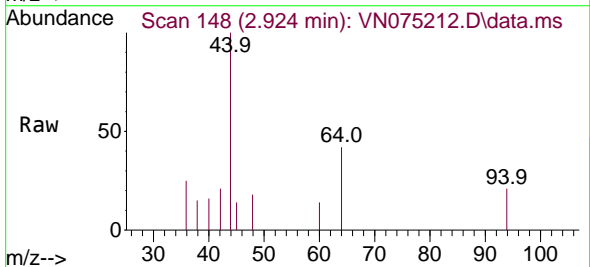
Instrument :  
 MSVOA\_N  
 ClientSampleId :  
 VN1109WBL01

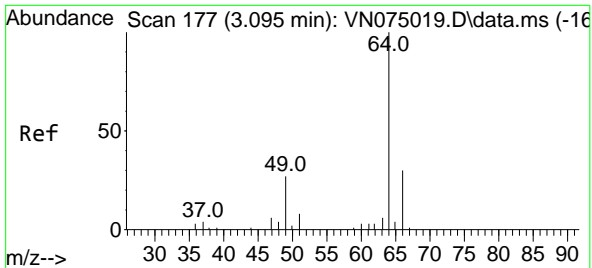
Tgt Ion:168 Resp: 113533  
 Ion Ratio Lower Upper  
 168 100  
 99 61.2 51.6 77.4



#5  
 Bromomethane  
 Concen: Below Cal  
 RT: 2.924 min Scan# 148  
 Delta R.T. 0.006 min  
 Lab File: VN075212.D  
 Acq: 09 Nov 2022 12:49

Tgt Ion: 94 Resp: 382  
 Ion Ratio Lower Upper  
 94 100  
 96 0.0 71.8 107.6#

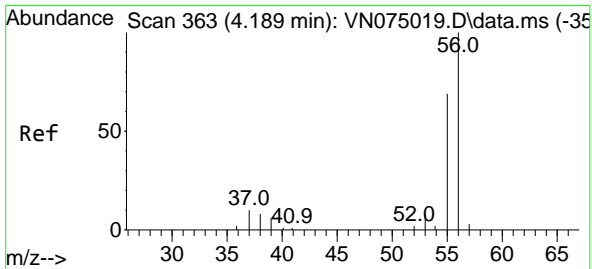
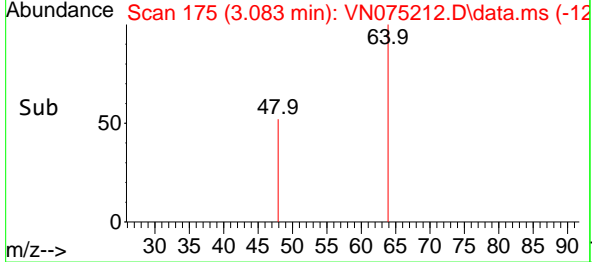
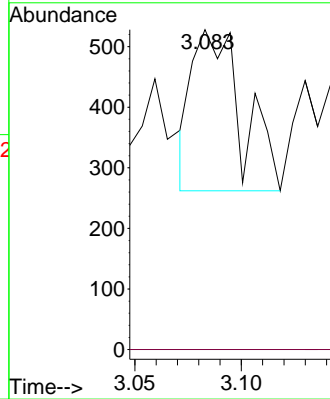
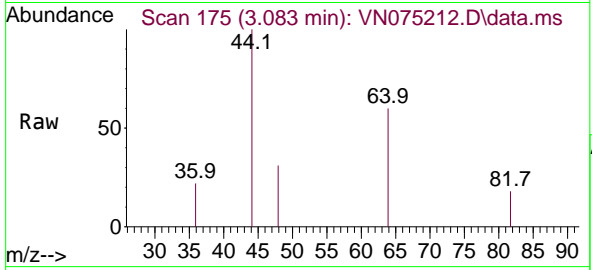




#6  
 Chloroethane  
 Concen: 0.271 ug/l  
 RT: 3.083 min Scan# 11  
 Delta R.T. -0.012 min  
 Lab File: VN075212.D  
 Acq: 09 Nov 2022 12:49

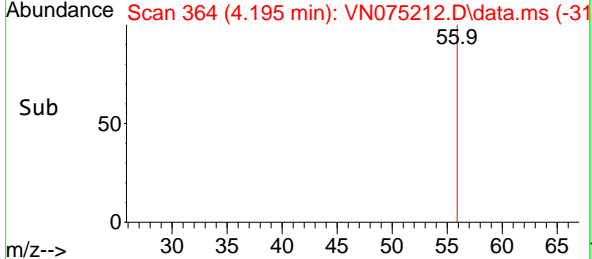
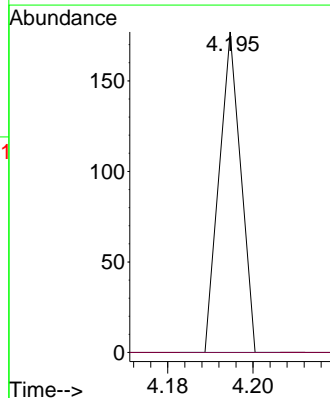
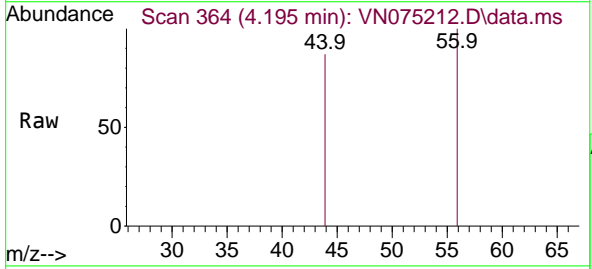
Instrument : MSVOA\_N  
 ClientSampleId : VN1109WBL01

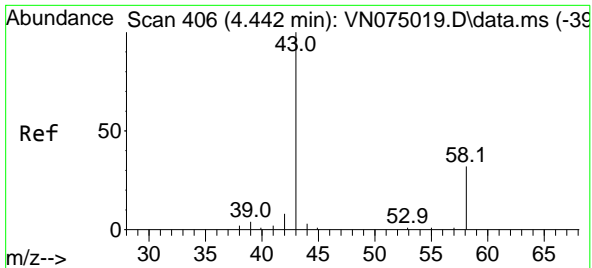
Tgt Ion: 64 Resp: 435  
 Ion Ratio Lower Upper  
 64 100  
 66 0.0 23.8 35.8#



#13  
 Acrolein  
 Concen: 0.212 ug/l  
 RT: 4.195 min Scan# 364  
 Delta R.T. 0.006 min  
 Lab File: VN075212.D  
 Acq: 09 Nov 2022 12:49

Tgt Ion: 56 Resp: 62  
 Ion Ratio Lower Upper  
 56 100  
 55 0.0 55.2 82.8#

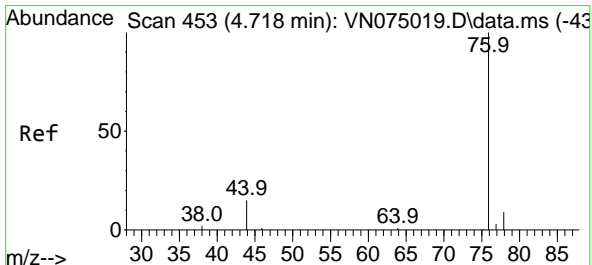
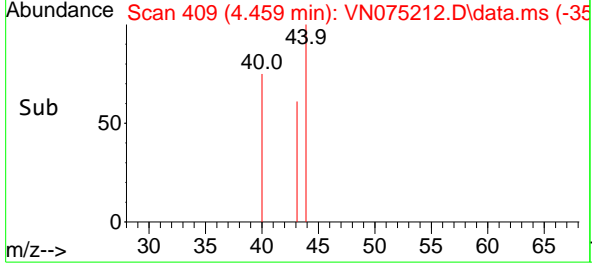
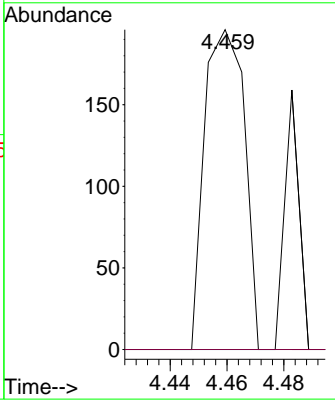
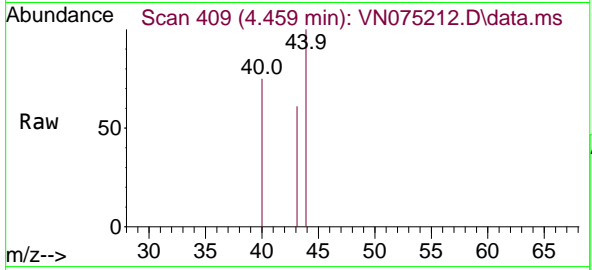




#16  
 Acetone  
 Concen: 0.295 ug/l  
 RT: 4.459 min Scan# 409  
 Delta R.T. 0.017 min  
 Lab File: VN075212.D  
 Acq: 09 Nov 2022 12:49

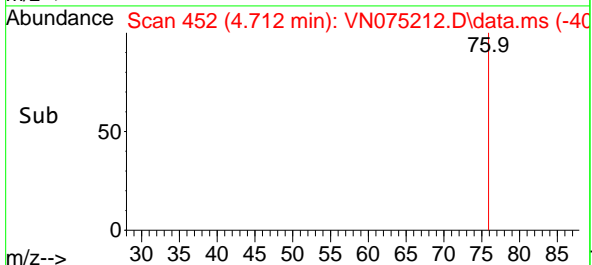
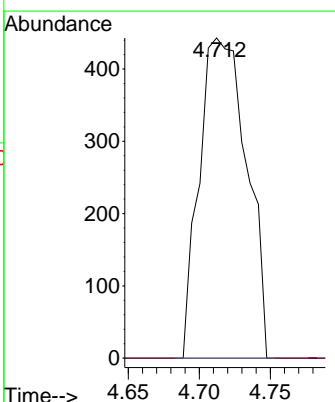
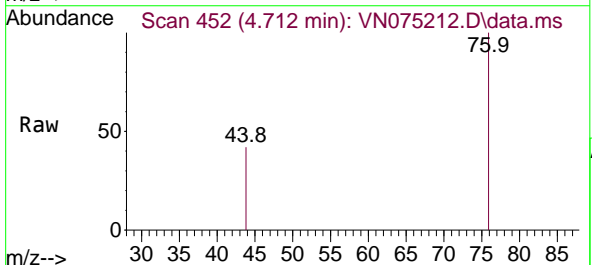
Instrument : MSVOA\_N  
 Client Sample Id : VN1109WBL01

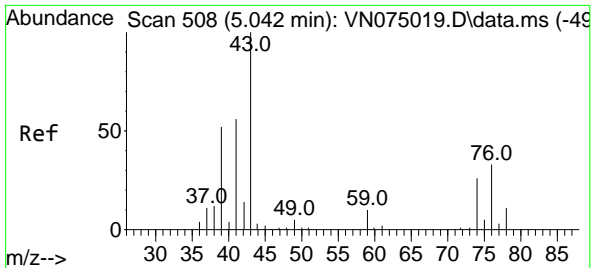
Tgt Ion: 43 Resp: 191  
 Ion Ratio Lower Upper  
 43 100  
 58 0.0 25.5 38.3#



#17  
 Carbon Disulfide  
 Concen: 0.339 ug/l  
 RT: 4.712 min Scan# 452  
 Delta R.T. -0.006 min  
 Lab File: VN075212.D  
 Acq: 09 Nov 2022 12:49

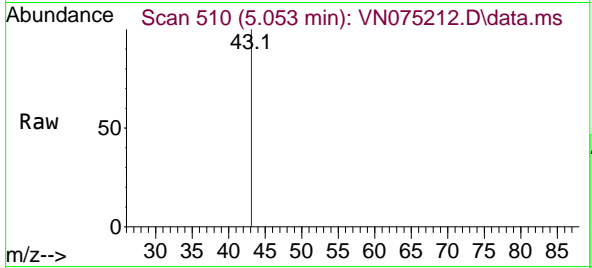
Tgt Ion: 76 Resp: 1026  
 Ion Ratio Lower Upper  
 76 100  
 78 0.0 7.4 11.2#



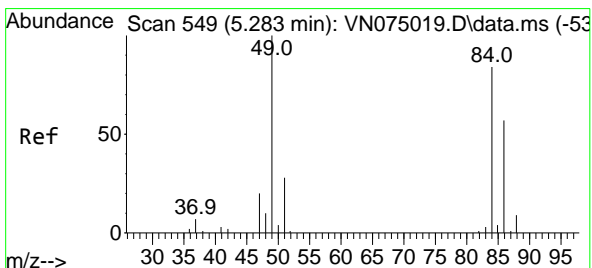
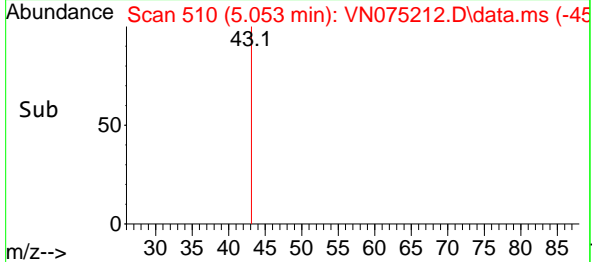
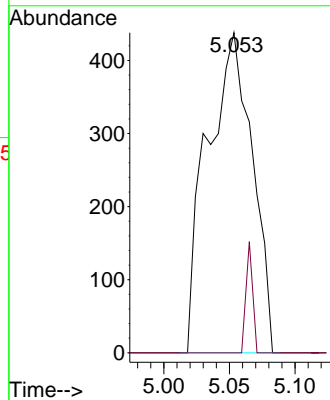


#18  
 Methyl Acetate  
 Concen: 0.492 ug/l  
 RT: 5.053 min Scan# 510  
 Delta R.T. 0.011 min  
 Lab File: VN075212.D  
 Acq: 09 Nov 2022 12:49

Instrument :  
 MSVOA\_N  
 ClientSampleId :  
 VN1109WBL01

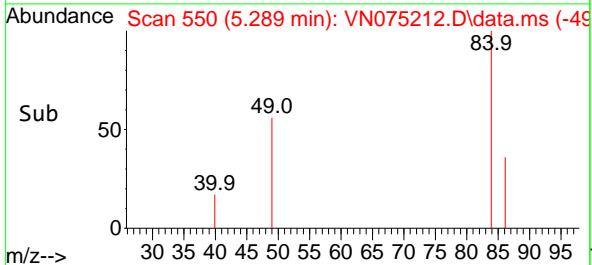
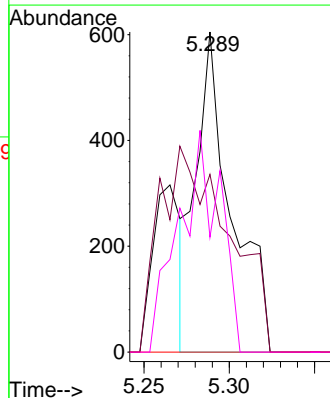
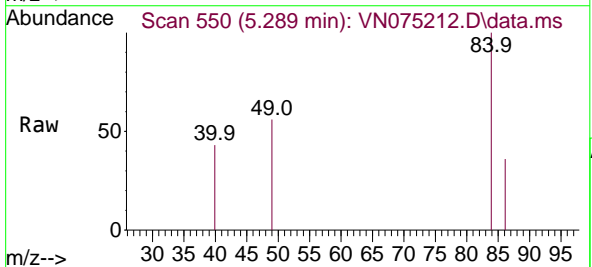


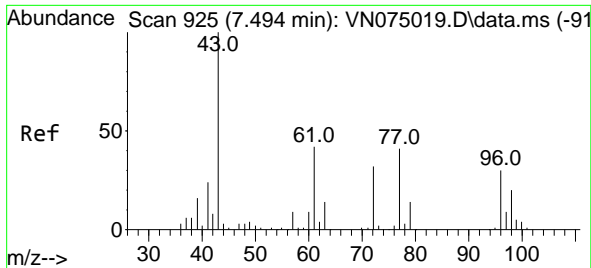
Tgt Ion: 43 Resp: 1042  
 Ion Ratio Lower Upper  
 43 100  
 74 5.2 22.0 33.0#



#20  
 Methylene Chloride  
 Concen: 0.602 ug/l  
 RT: 5.289 min Scan# 550  
 Delta R.T. 0.006 min  
 Lab File: VN075212.D  
 Acq: 09 Nov 2022 12:49

Tgt Ion: 84 Resp: 870  
 Ion Ratio Lower Upper  
 84 100  
 49 55.5 94.9 142.3#  
 51 0.0 26.8 40.2#  
 86 35.9 53.7 80.5#

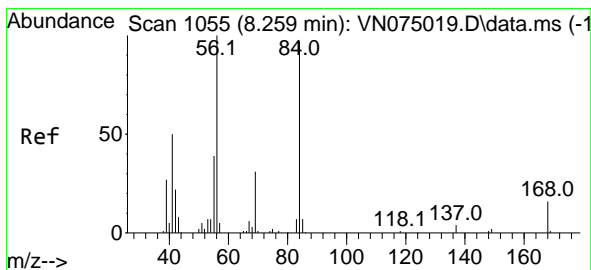
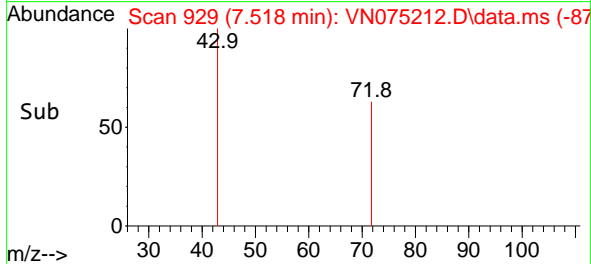
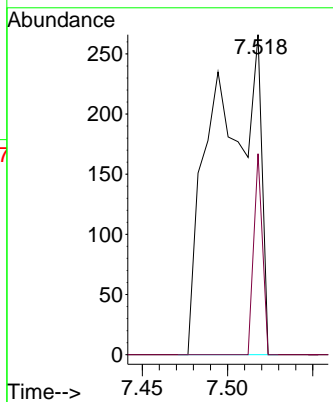
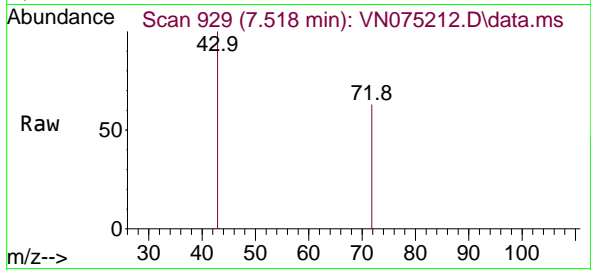




#25  
 2-Butanone  
 Concen: 0.468 ug/l  
 RT: 7.518 min Scan# 91  
 Delta R.T. 0.024 min  
 Lab File: VN075212.D  
 Acq: 09 Nov 2022 12:49

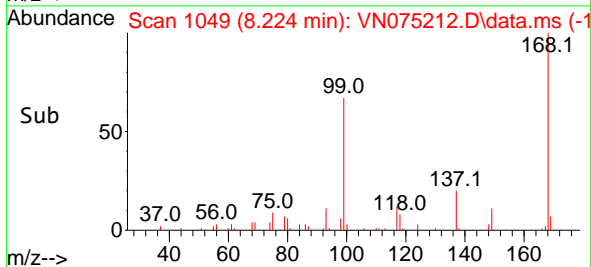
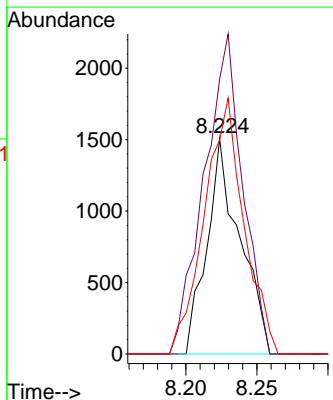
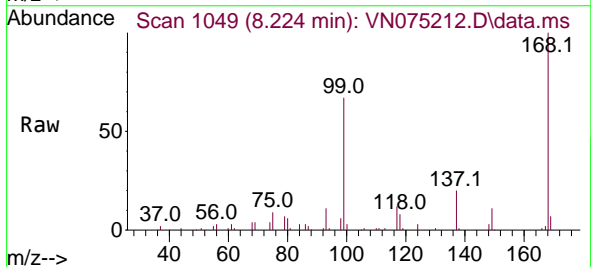
Instrument :  
 MSVOA\_N  
 ClientSampleId :  
 VN1109WBL01

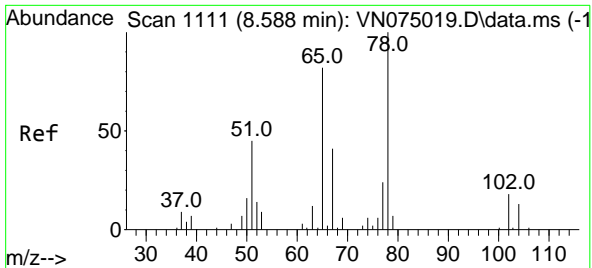
Tgt Ion: 43 Resp: 477  
 Ion Ratio Lower Upper  
 43 100  
 72 62.8 25.5 38.3#



#31  
 Cyclohexane  
 Concen: 1.071 ug/l  
 RT: 8.224 min Scan# 1049  
 Delta R.T. -0.035 min  
 Lab File: VN075212.D  
 Acq: 09 Nov 2022 12:49

Tgt Ion: 56 Resp: 2437  
 Ion Ratio Lower Upper  
 56 100  
 69 127.5 25.2 37.8#  
 84 99.1 77.8 116.8





#33  
 1,2-Dichloroethane-d4  
 Concen: 51.134 ug/l  
 RT: 8.583 min Scan# 1111  
 Delta R.T. -0.005 min  
 Lab File: VN075212.D  
 Acq: 09 Nov 2022 12:49

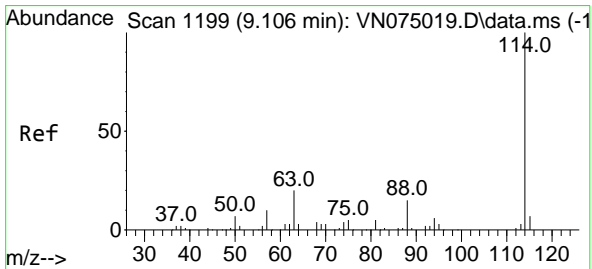
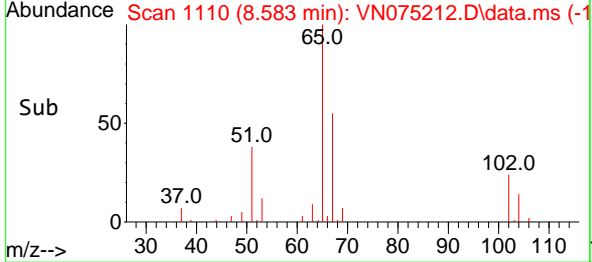
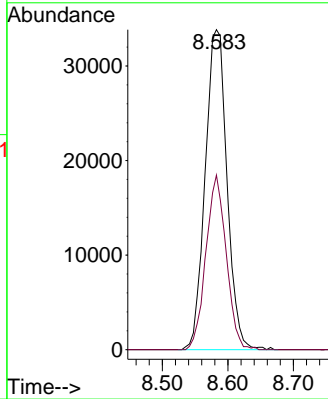
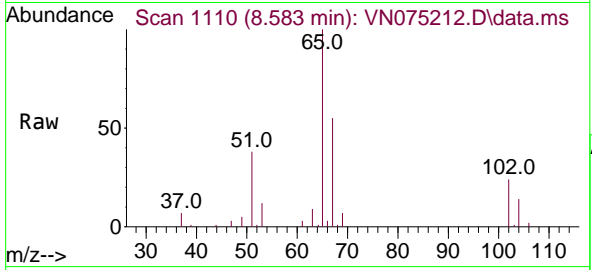
Instrument :

MSVOA\_N

ClientSampleId :

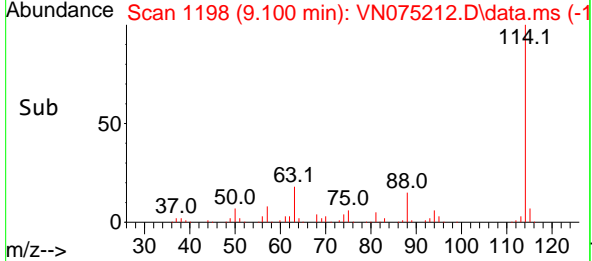
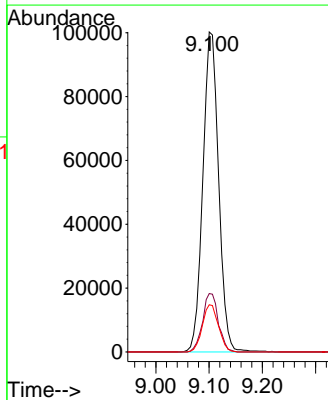
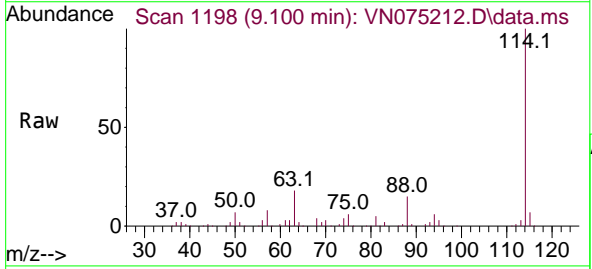
VN1109WBL01

Tgt Ion: 65 Resp: 78221  
 Ion Ratio Lower Upper  
 65 100  
 67 50.8 0.0 102.0

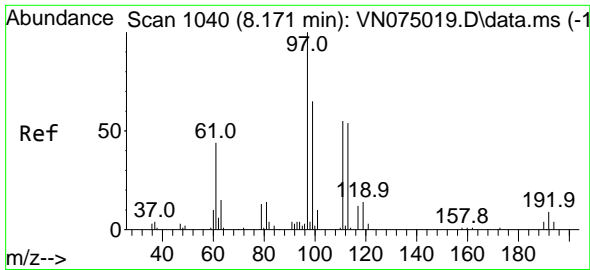


#34  
 1,4-Difluorobenzene  
 Concen: 50.000 ug/l  
 RT: 9.100 min Scan# 1198  
 Delta R.T. -0.006 min  
 Lab File: VN075212.D  
 Acq: 09 Nov 2022 12:49

Tgt Ion:114 Resp: 206325  
 Ion Ratio Lower Upper  
 114 100  
 63 18.3 0.0 39.6  
 88 14.8 0.0 29.0



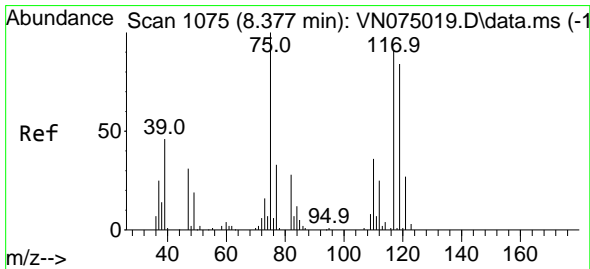
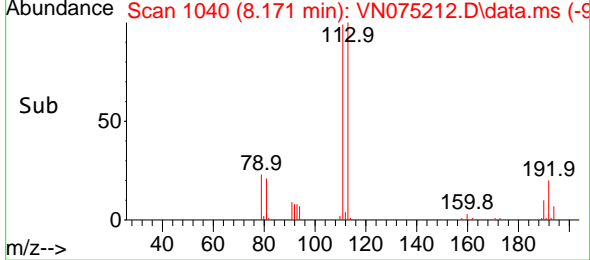
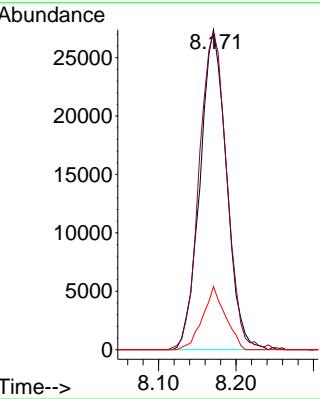
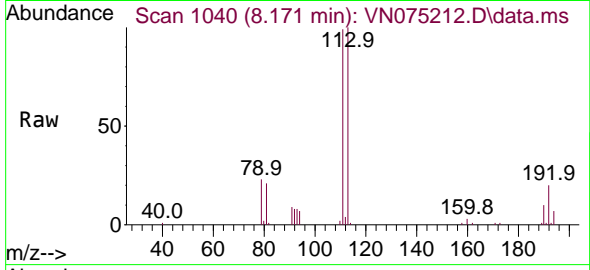




#35  
 Dibromofluoromethane  
 Concen: 53.545 ug/l  
 RT: 8.171 min Scan# 1040  
 Delta R.T. -0.000 min  
 Lab File: VN075212.D  
 Acq: 09 Nov 2022 12:49

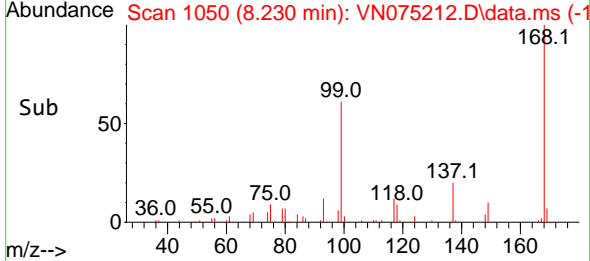
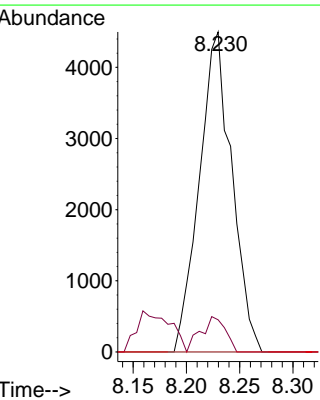
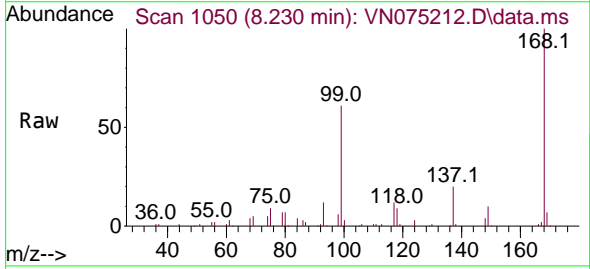
Instrument : MSVOA\_N  
 ClientSampleId : VN1109WBL01

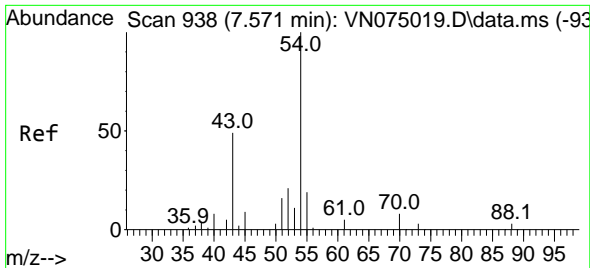
Tgt Ion:113 Resp: 64856  
 Ion Ratio Lower Upper  
 113 100  
 111 103.6 80.5 120.7  
 192 17.0 13.2 19.8



#36  
 1,1-Dichloropropene  
 Concen: 5.083 ug/l  
 RT: 8.230 min Scan# 1050  
 Delta R.T. -0.147 min  
 Lab File: VN075212.D  
 Acq: 09 Nov 2022 12:49

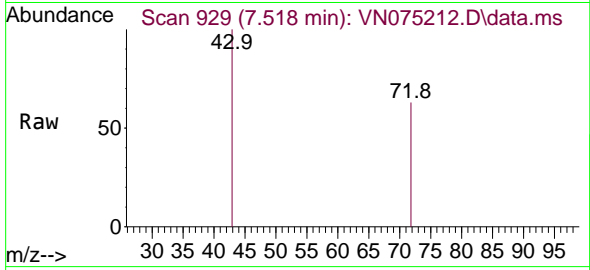
Tgt Ion: 75 Resp: 9532  
 Ion Ratio Lower Upper  
 75 100  
 110 8.3 17.8 53.3#  
 77 0.0 24.6 37.0#





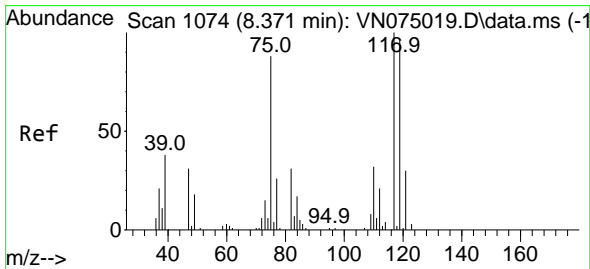
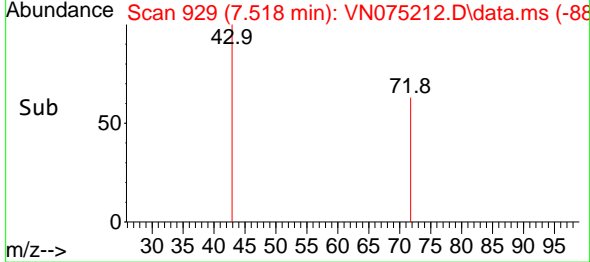
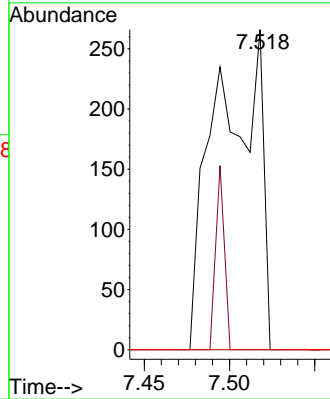
#37  
 Ethyl Acetate  
 Concen: 0.232 ug/l  
 RT: 7.518 min Scan# 91  
 Delta R.T. -0.053 min  
 Lab File: VN075212.D  
 Acq: 09 Nov 2022 12:49

Instrument :  
 MSVOA\_N  
 ClientSampleId :  
 VN1109WBL01



Tgt Ion: 43 Resp: 477

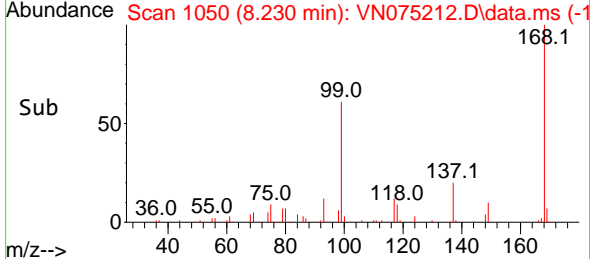
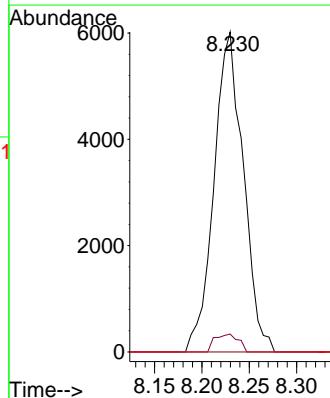
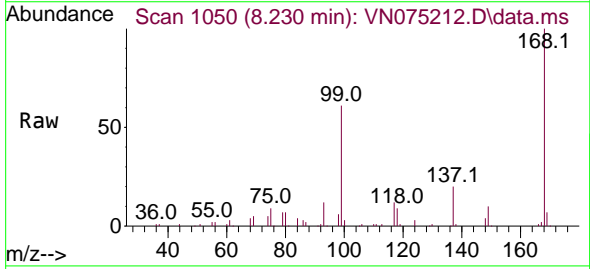
Ion	Ratio	Lower	Upper
43	100		
61	0.0	12.2	18.4#
70	0.0	9.4	14.2#

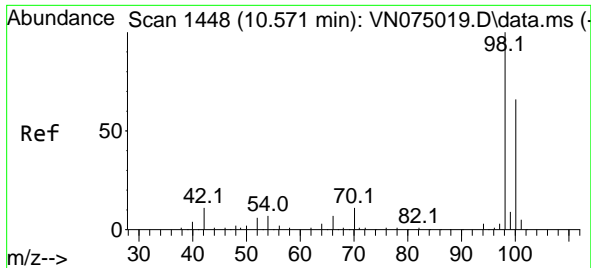


#38  
 Carbon Tetrachloride  
 Concen: 6.289 ug/l  
 RT: 8.230 min Scan# 1050  
 Delta R.T. -0.141 min  
 Lab File: VN075212.D  
 Acq: 09 Nov 2022 12:49

Tgt Ion: 117 Resp: 12973

Ion	Ratio	Lower	Upper
117	100		
119	5.6	76.7	115.1#
121	0.0	23.9	35.9#

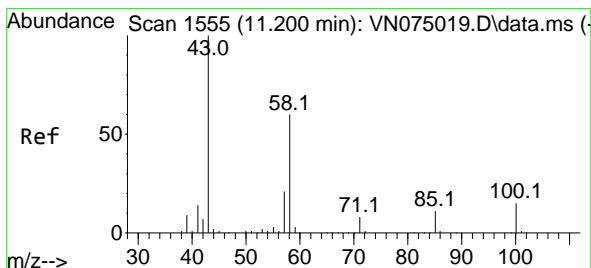
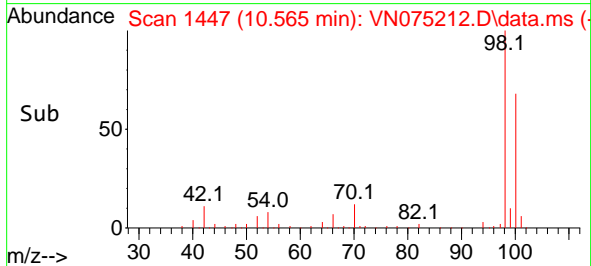
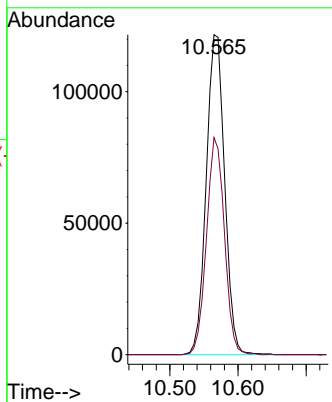
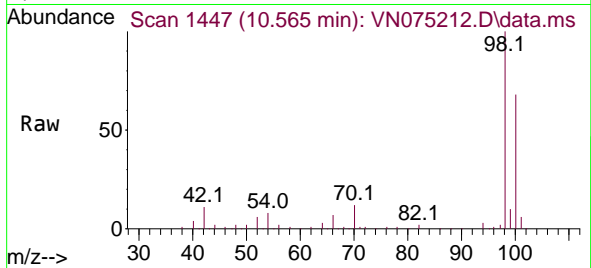




#50  
 Toluene-d8  
 Concen: 48.622 ug/l  
 RT: 10.565 min Scan# 1447  
 Delta R.T. -0.006 min  
 Lab File: VN075212.D  
 Acq: 09 Nov 2022 12:49

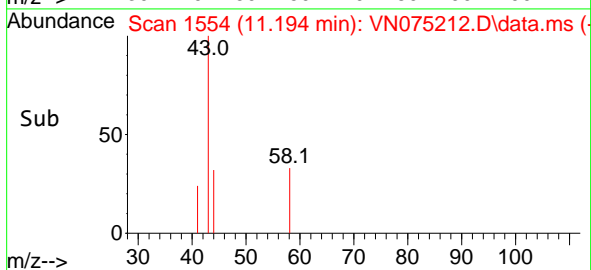
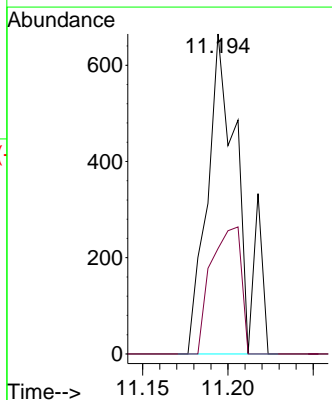
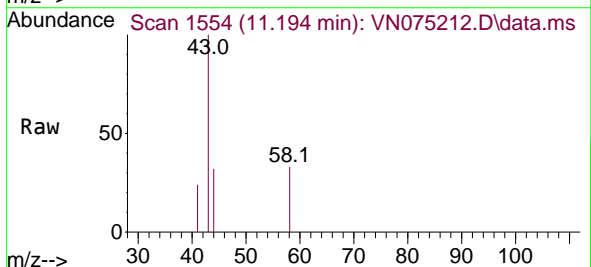
Instrument : MSVOA\_N  
 ClientSampleId : VN1109WBL01

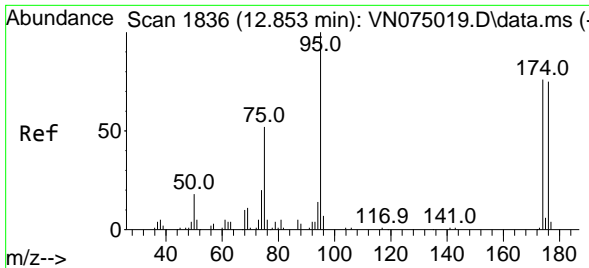
Tgt Ion: 98 Resp: 228487  
 Ion Ratio Lower Upper  
 98 100  
 100 66.2 53.0 79.6



#59  
 2-Hexanone  
 Concen: 0.549 ug/l  
 RT: 11.194 min Scan# 1554  
 Delta R.T. -0.006 min  
 Lab File: VN075212.D  
 Acq: 09 Nov 2022 12:49

Tgt Ion: 43 Resp: 858  
 Ion Ratio Lower Upper  
 43 100  
 58 37.8 29.6 88.8

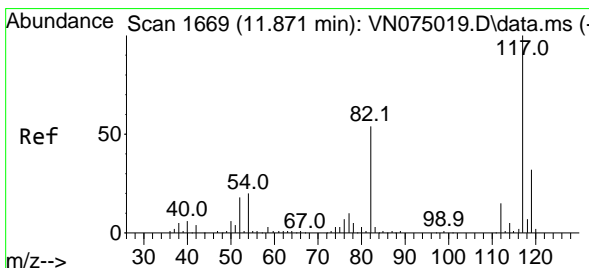
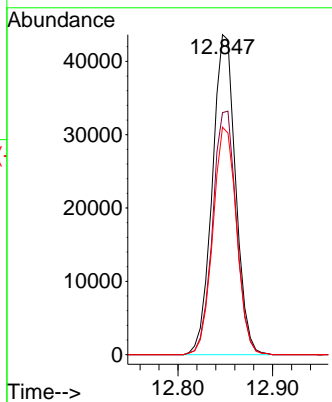
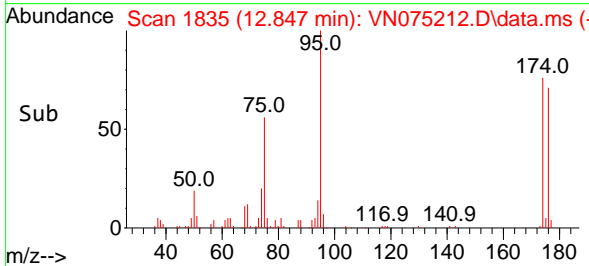
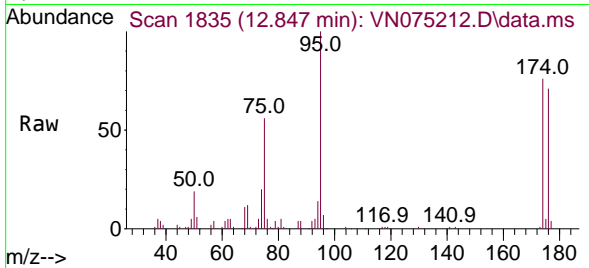




#62  
 4-Bromofluorobenzene  
 Concen: 45.270 ug/l  
 RT: 12.847 min Scan# 11  
 Delta R.T. -0.006 min  
 Lab File: VN075212.D  
 Acq: 09 Nov 2022 12:49

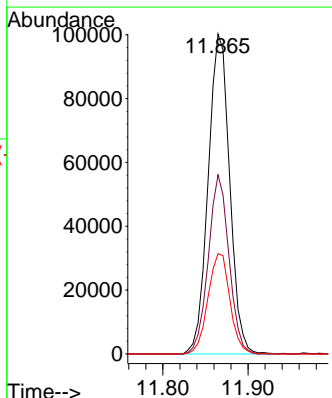
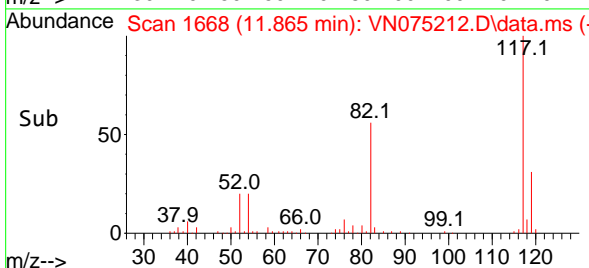
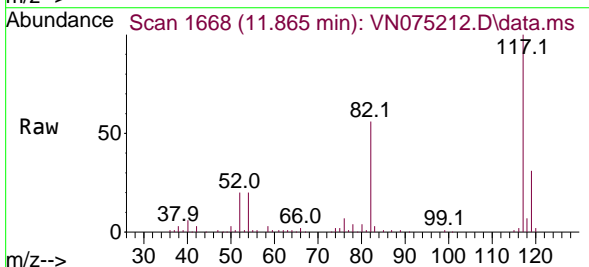
Instrument :  
 MSVOA\_N  
 ClientSampleId :  
 VN1109WBL01

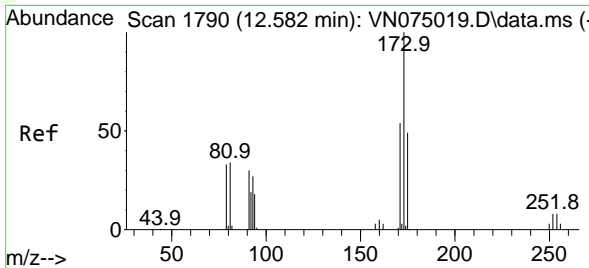
Tgt Ion: 95 Resp: 74730  
 Ion Ratio Lower Upper  
 95 100  
 174 77.3 0.0 147.4  
 176 72.1 0.0 142.2



#63  
 Chlorobenzene-d5  
 Concen: 50.000 ug/l  
 RT: 11.865 min Scan# 1668  
 Delta R.T. -0.006 min  
 Lab File: VN075212.D  
 Acq: 09 Nov 2022 12:49

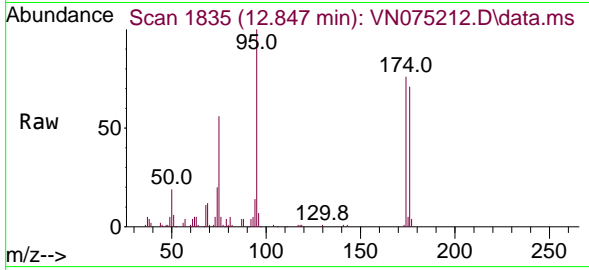
Tgt Ion: 117 Resp: 175416  
 Ion Ratio Lower Upper  
 117 100  
 82 56.0 43.1 64.7  
 119 31.4 25.5 38.3



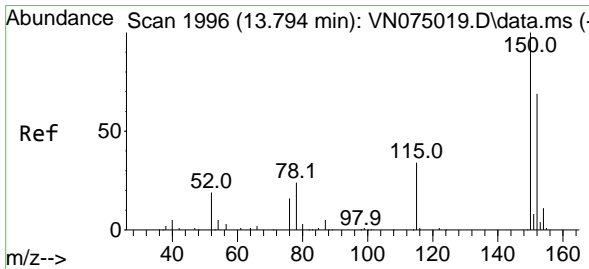
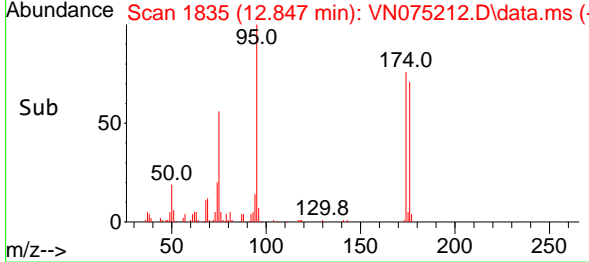
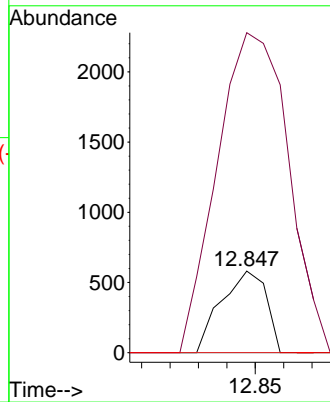


#71  
 Bromoform  
 Concen: 0.615 ug/l  
 RT: 12.847 min Scan# 1835  
 Delta R.T. 0.265 min  
 Lab File: VN075212.D  
 Acq: 09 Nov 2022 12:49

Instrument :  
 MSVOA\_N  
 ClientSampleId :  
 VN1109WBL01

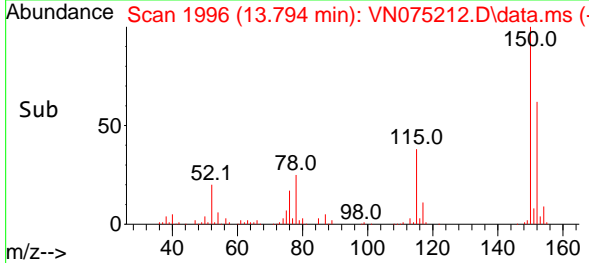
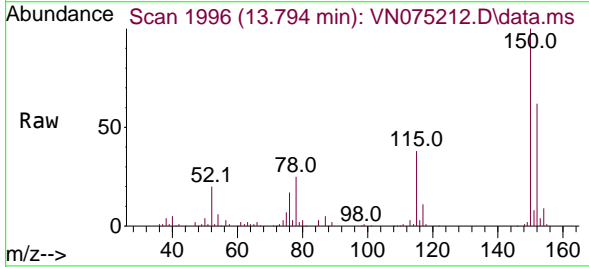
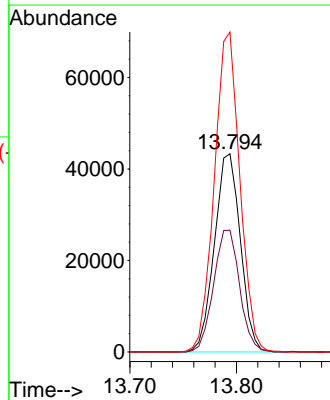


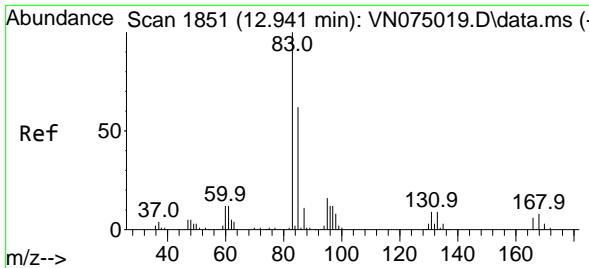
Tgt Ion:173 Resp: 640  
 Ion Ratio Lower Upper  
 173 100  
 175 551.9 24.6 74.0#  
 254 0.0 0.0 0.0



#72  
 1,4-Dichlorobenzene-d4  
 Concen: 50.000 ug/l  
 RT: 13.794 min Scan# 1996  
 Delta R.T. -0.000 min  
 Lab File: VN075212.D  
 Acq: 09 Nov 2022 12:49

Tgt Ion:152 Resp: 73189  
 Ion Ratio Lower Upper  
 152 100  
 115 61.7 30.2 90.6  
 150 159.0 0.0 348.4

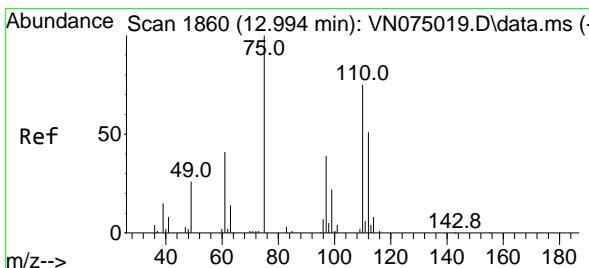
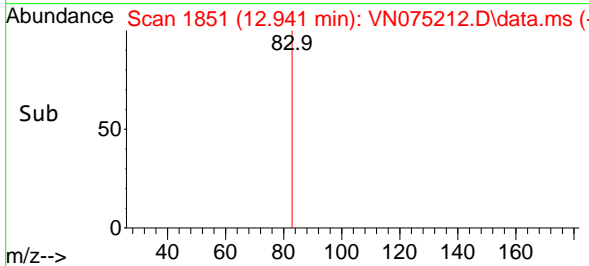
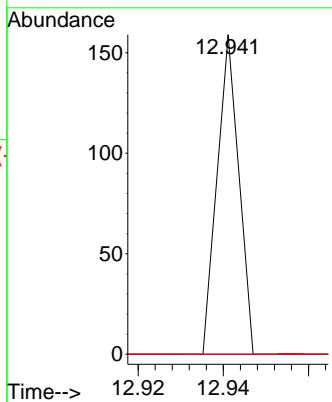
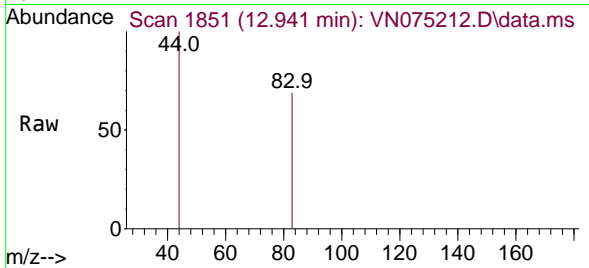




#75  
 1,1,2,2-Tetrachloroethane  
 Concen: Below Cal  
 RT: 12.941 min Scan# 1835  
 Delta R.T. 0.000 min  
 Lab File: VN075212.D  
 Acq: 09 Nov 2022 12:49

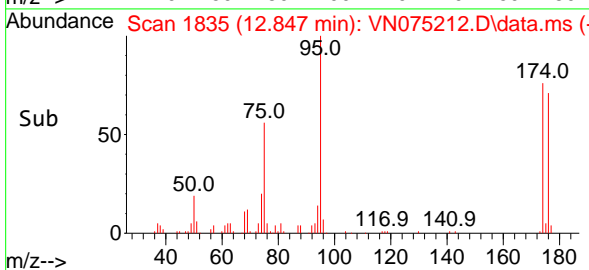
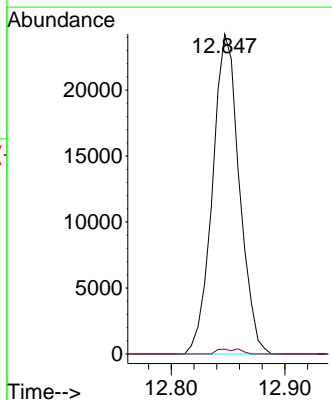
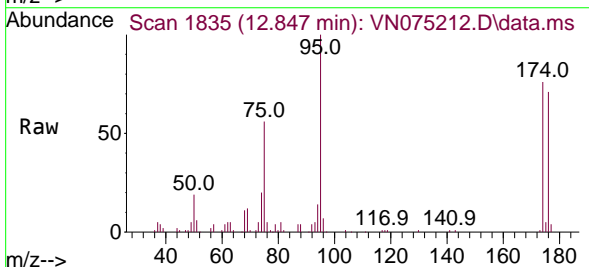
Instrument : MSVOA\_N  
 ClientSampleId : VN1109WBL01

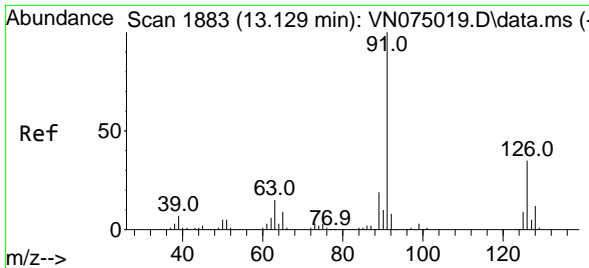
Tgt Ion: 83 Resp: 56  
 Ion Ratio Lower Upper  
 83 100  
 131 0.0 5.1 15.3#  
 85 0.0 31.6 94.7#



#76  
 1,2,3-Trichloropropane  
 Concen: 25.649 ug/l  
 RT: 12.847 min Scan# 1835  
 Delta R.T. -0.147 min  
 Lab File: VN075212.D  
 Acq: 09 Nov 2022 12:49

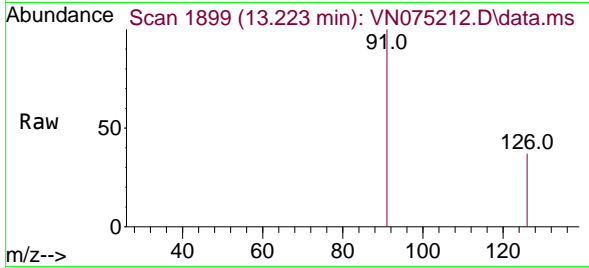
Tgt Ion: 75 Resp: 39858  
 Ion Ratio Lower Upper  
 75 100  
 77 1.3 75.6 226.8#



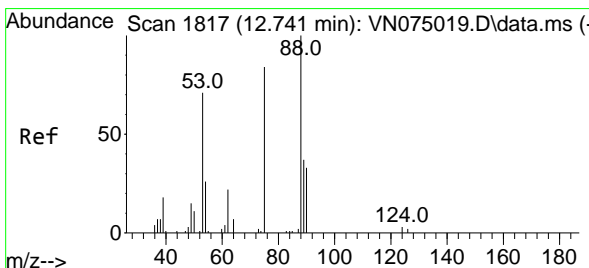
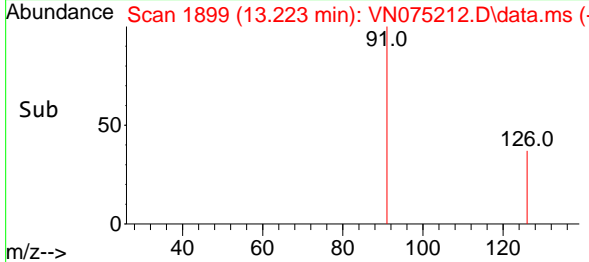
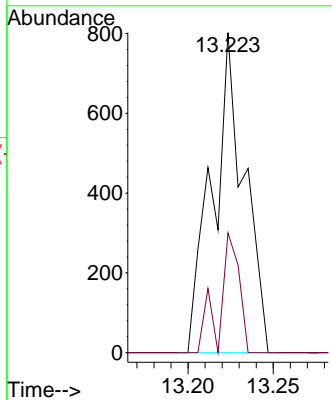


#79  
 2-Chlorotoluene  
 Concen: 0.257 ug/l  
 RT: 13.223 min Scan# 1899  
 Delta R.T. 0.094 min  
 Lab File: VN075212.D  
 Acq: 09 Nov 2022 12:49

Instrument : MSVOA\_N  
 ClientSampleId : VN1109WBL01

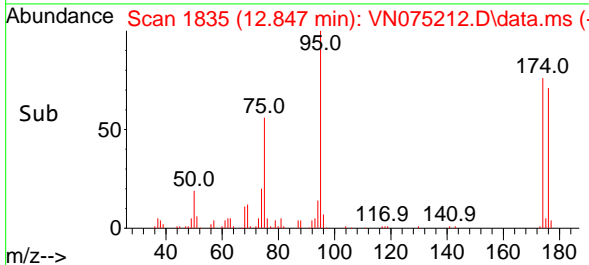
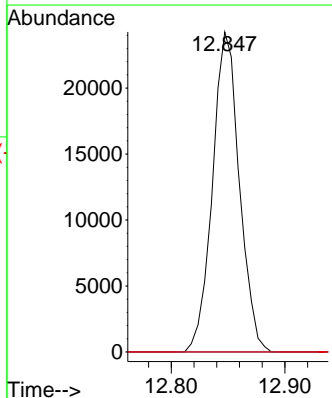
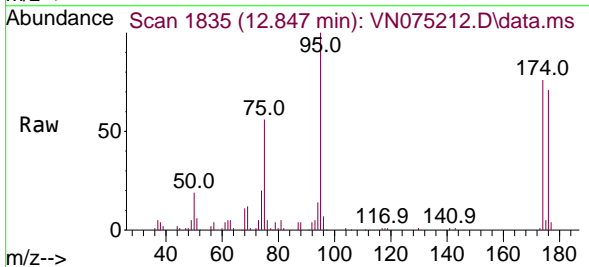


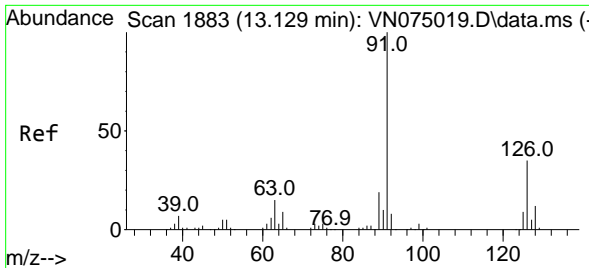
Tgt Ion: 91 Resp: 1037  
 Ion Ratio Lower Upper  
 91 100  
 126 23.1 16.9 50.7



#81  
 trans-1,4-Dichloro-2-butene  
 Concen: 65.840 ug/l  
 RT: 12.847 min Scan# 1835  
 Delta R.T. 0.106 min  
 Lab File: VN075212.D  
 Acq: 09 Nov 2022 12:49

Tgt Ion: 75 Resp: 39858  
 Ion Ratio Lower Upper  
 75 100  
 53 0.0 78.5 117.7#  
 89 0.0 37.7 56.5#





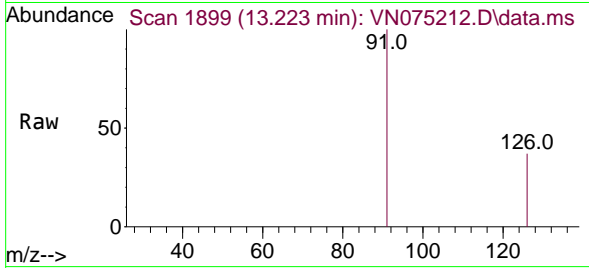
#82  
 4-Chlorotoluene  
 Concen: 0.257 ug/l  
 RT: 13.223 min Scan# 1883  
 Delta R.T. 0.094 min  
 Lab File: VN075212.D  
 Acq: 09 Nov 2022 12:49

Instrument :

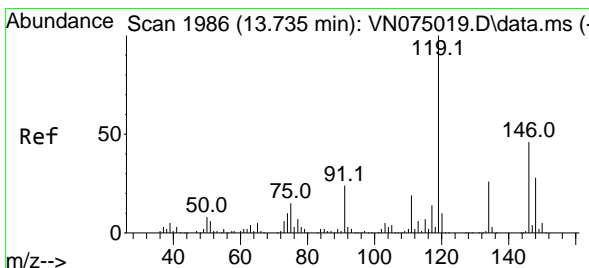
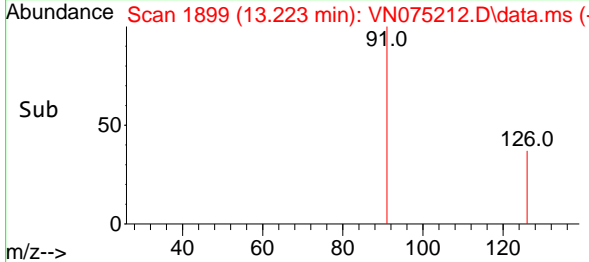
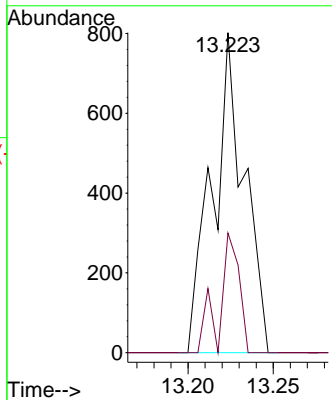
MSVOA\_N

ClientSampleId :

VN1109WBL01

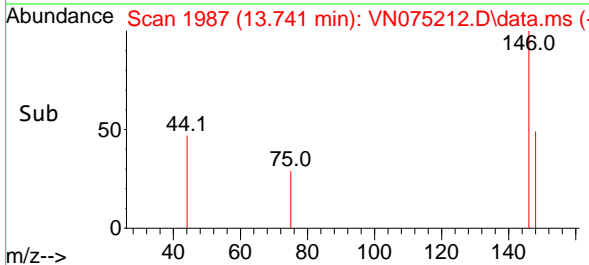
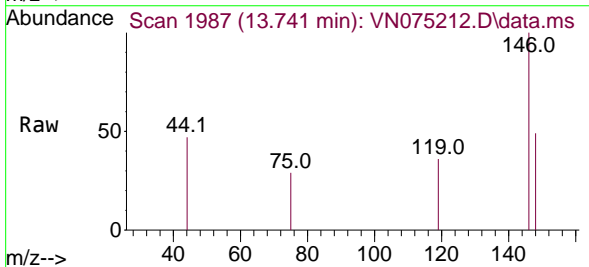
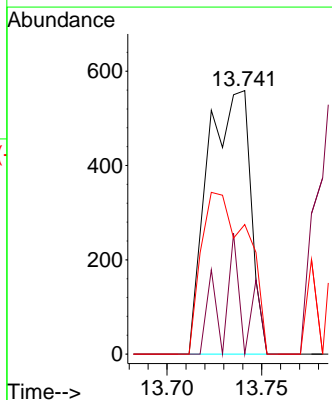


Tgt Ion: 91 Resp: 1037  
 Ion Ratio Lower Upper  
 91 100  
 126 23.1 16.9 50.7

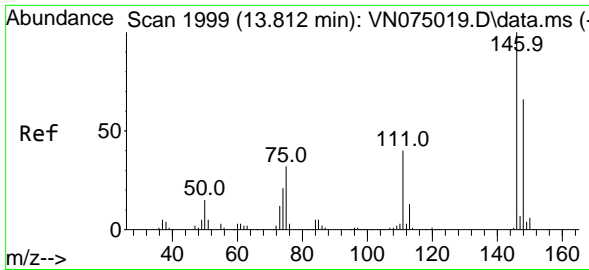


#87  
 1,3-Dichlorobenzene  
 Concen: 0.345 ug/l  
 RT: 13.741 min Scan# 1987  
 Delta R.T. 0.006 min  
 Lab File: VN075212.D  
 Acq: 09 Nov 2022 12:49

Tgt Ion: 146 Resp: 875  
 Ion Ratio Lower Upper  
 146 100  
 111 16.7 20.8 62.5#  
 148 0.0 31.1 93.5#

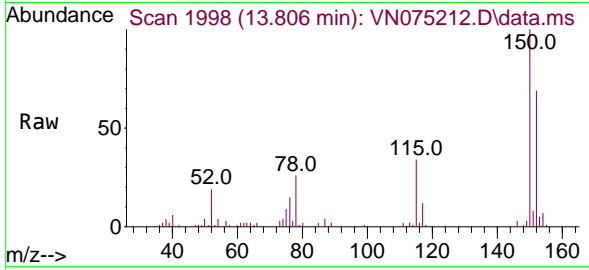




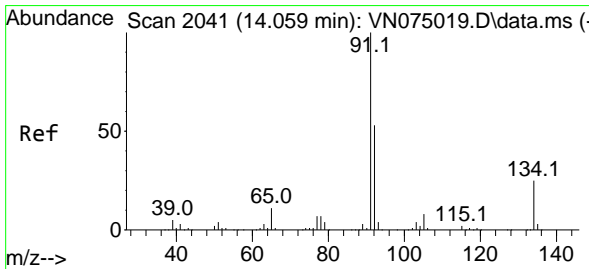
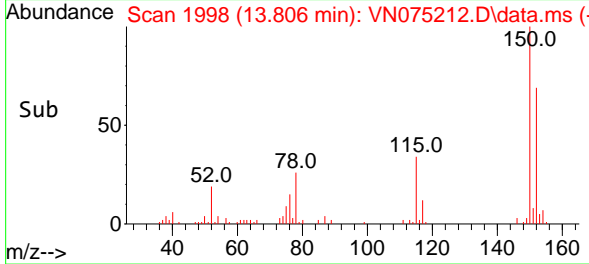
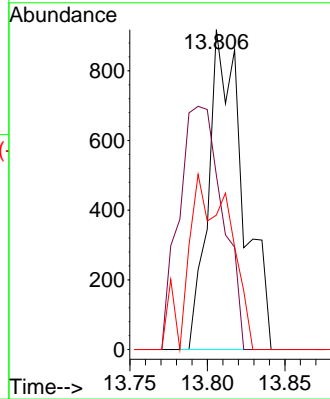


#88  
 1,4-Dichlorobenzene  
 Concen: 0.560 ug/l  
 RT: 13.806 min Scan# 1999  
 Delta R.T. -0.006 min  
 Lab File: VN075212.D  
 Acq: 09 Nov 2022 12:49

Instrument : MSVOA\_N  
 ClientSampleId : VN1109WBL01

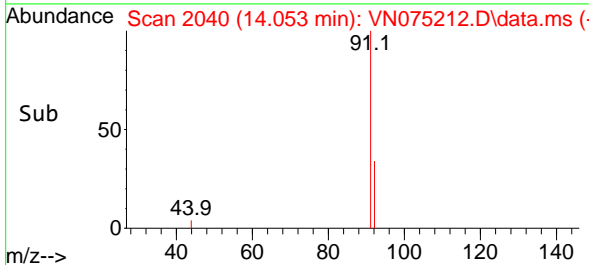
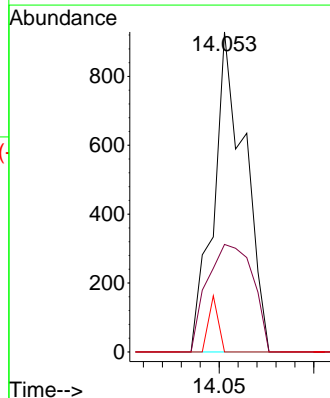
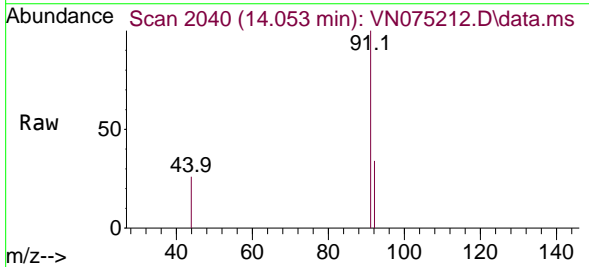


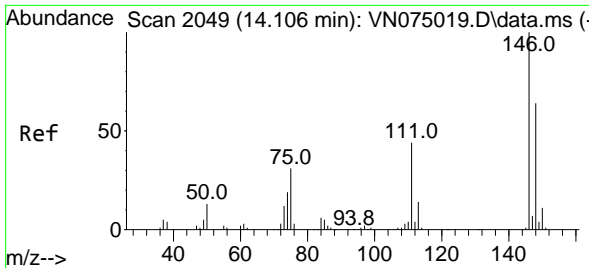
Tgt Ion:146 Resp: 1405  
 Ion Ratio Lower Upper  
 146 100  
 111 97.0 20.1 60.3#  
 148 67.1 31.9 95.7



#89  
 n-Butylbenzene  
 Concen: 0.260 ug/l  
 RT: 14.053 min Scan# 2040  
 Delta R.T. -0.006 min  
 Lab File: VN075212.D  
 Acq: 09 Nov 2022 12:49

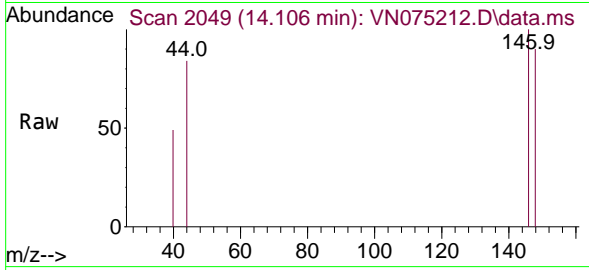
Tgt Ion: 91 Resp: 1059  
 Ion Ratio Lower Upper  
 91 100  
 92 49.4 26.5 79.4  
 134 5.5 13.0 39.0#





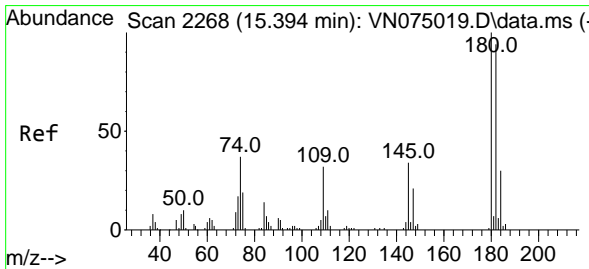
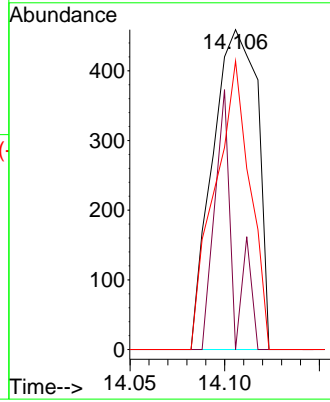
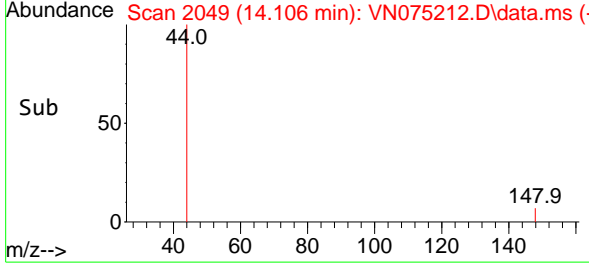
#91  
 1,2-Dichlorobenzene  
 Concen: 0.299 ug/l  
 RT: 14.106 min Scan# 2049  
 Delta R.T. -0.000 min  
 Lab File: VN075212.D  
 Acq: 09 Nov 2022 12:49

Instrument : MSVOA\_N  
 ClientSampleId : VN1109WBL01

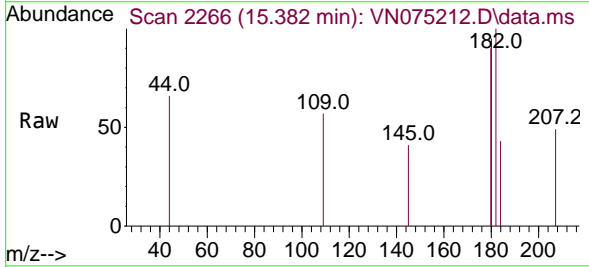


Tgt Ion:146 Resp: 754

Ion	Ratio	Lower	Upper
146	100		
111	33.7	21.3	63.9
148	71.1	31.4	94.2

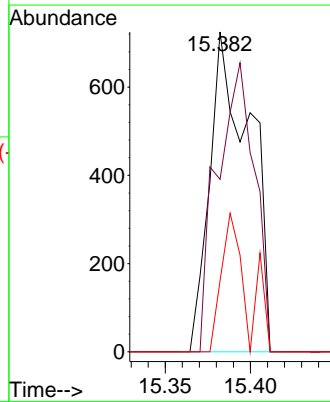
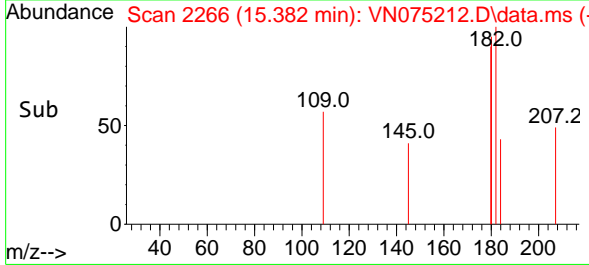


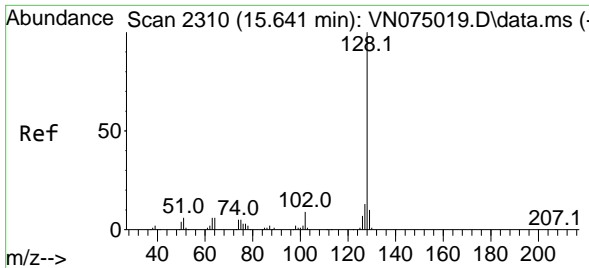
#93  
 1,2,4-Trichlorobenzene  
 Concen: 1.095 ug/l  
 RT: 15.382 min Scan# 2266  
 Delta R.T. -0.012 min  
 Lab File: VN075212.D  
 Acq: 09 Nov 2022 12:49



Tgt Ion:180 Resp: 1187

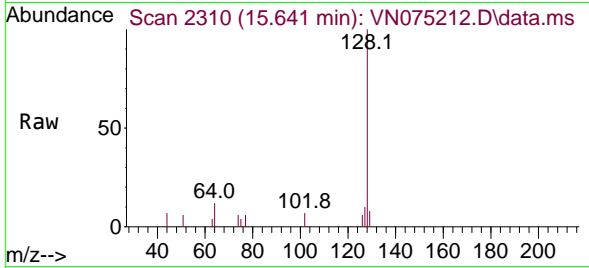
Ion	Ratio	Lower	Upper
180	100		
182	84.0	47.8	143.4
145	27.3	16.8	50.3



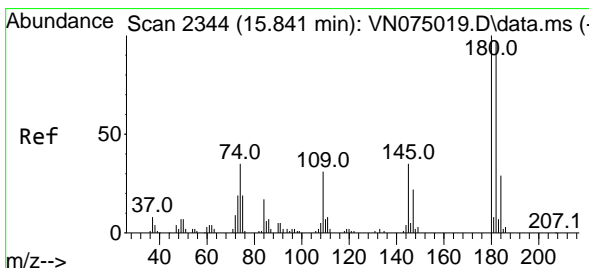
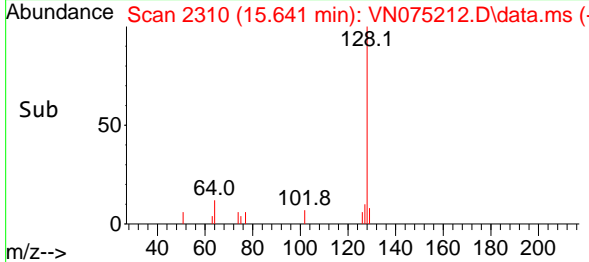
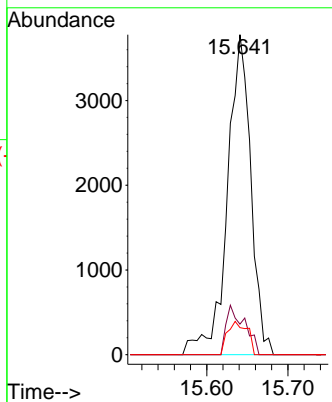


#95  
 Naphthalene  
 Concen: 1.823 ug/l  
 RT: 15.641 min Scan# 21  
 Delta R.T. -0.000 min  
 Lab File: VN075212.D  
 Acq: 09 Nov 2022 12:49

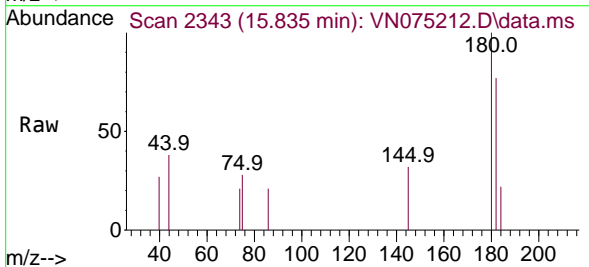
Instrument :  
 MSVOA\_N  
 ClientSampleId :  
 VN1109WBL01



Tgt Ion:128 Resp: 7595  
 Ion Ratio Lower Upper  
 128 100  
 127 12.2 10.4 15.6  
 129 8.8 8.6 12.8



#96  
 1,2,3-Trichlorobenzene  
 Concen: 1.393 ug/l  
 RT: 15.835 min Scan# 2343  
 Delta R.T. -0.006 min  
 Lab File: VN075212.D  
 Acq: 09 Nov 2022 12:49



Tgt Ion:180 Resp: 1500  
 Ion Ratio Lower Upper  
 180 100  
 182 76.5 47.3 141.8  
 145 25.4 17.6 52.9

