

Data Path : Z:\VOASRV\HPCHEM1\MSVOA N\DATA\VN111120\
 Data File : VN064564.D
 Acq On : 11 Nov 2020 18:51
 Operator : JC/MD
 Sample : PB132934ZHE#08
 Misc : 5.00mL/MSVOA N/WATER
 ALS Vial : 22 Sample Multiplier: 1

Instrument :
 MSVOA_N
ClientSampleId :
 PB132934ZHE#08

Manual Integrations
APPROVED
 MMDadoda
 11/12/2020 9:13:01 AM

Quant Time: Nov 12 02:42:38 2020
 Quant Method : Z:\VOASRV\HPCHEM1\MSVOA_N\METHODS\82N110420W.M
 Quant Title : SW846 8260
 QLast Update : Wed Nov 04 12:09:03 2020
 Response via : Initial Calibration

Internal Standards	R.T.	QIon	Response	Conc	Units	Dev(Min)
1) Pentafluorobenzene	7.63	168	237688	50.00	ug/l	0.00
34) 1,4-Difluorobenzene	8.55	114	526225	50.00	ug/l	0.00
63) Chlorobenzene-d5	11.38	117	565549	50.00	ug/l	0.00
72) 1,4-Dichlorobenzene-d4	13.32	152	196563	50.00	ug/l	0.00
System Monitoring Compounds						
33) 1,2-Dichloroethane-d4	7.99	65	237513	57.37	ug/l	0.00
Spiked Amount	50.000		Recovery	=	114.74%	
35) Dibromofluoromethane	7.55	113	173104	48.31	ug/l	0.00
Spiked Amount	50.000		Recovery	=	96.62%	
50) Toluene-d8	10.06	98	682879	49.31	ug/l	0.00
Spiked Amount	50.000		Recovery	=	98.62%	
62) 4-Bromofluorobenzene	12.38	95	254207	48.54	ug/l	0.00
Spiked Amount	50.000		Recovery	=	97.08%	
Target Compounds						
16) Acetone	3.79	43	10307	6.536	ug/l	93
18) Methyl Acetate	4.29	43	5195m	1.676	ug/l	
20) Methylene Chloride	4.51	84	9016	2.881	ug/l	99
43) Isopropyl Acetate	8.14	43	44054	4.890	ug/l	99

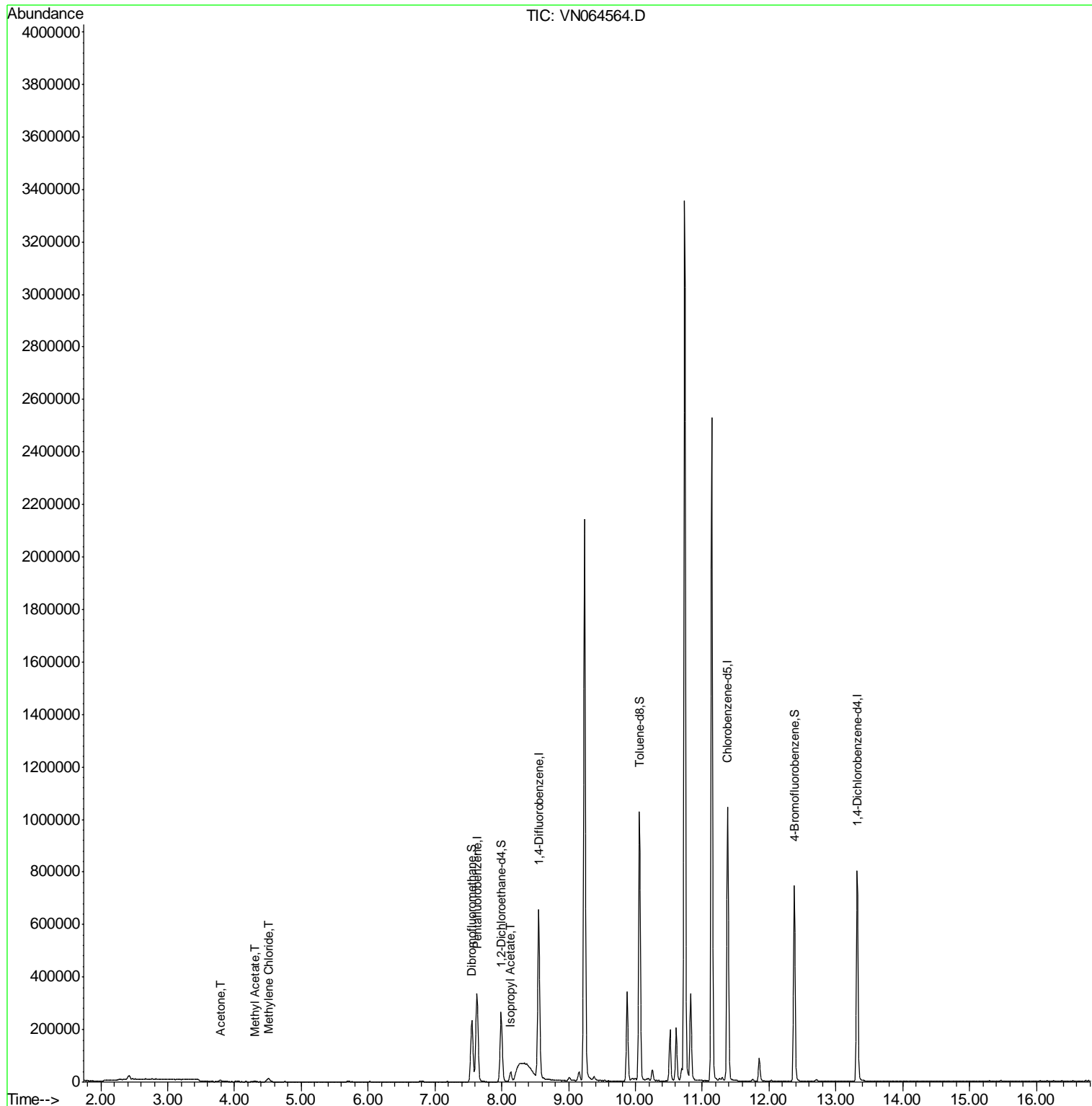
(#) = qualifier out of range (m) = manual integration (+) = signals summed

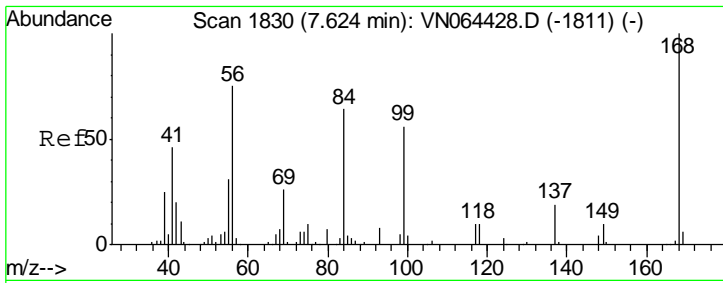
Data Path : Z:\VOASRV\HPCHEM1\MSVOA N\DATA\VN111120\
 Data File : VN064564.D
 Acq On : 11 Nov 2020 18:51
 Operator : JC/MD
 Sample : PB132934ZHE#08
 Misc : 5.00mL/MSVOA N/WATER
 ALS Vial : 22 Sample Multiplier: 1

Instrument :
 MSVOA_N
ClientSampleId :
 PB132934ZHE#08

Manual Integrations
APPROVED
 MMDadoda
 11/12/2020 9:13:01 AM

Quant Time: Nov 12 02:42:38 2020
 Quant Method : Z:\VOASRV\HPCHEM1\MSVOA_N\METHODS\82N110420W.M
 Quant Title : SW846 8260
 QLast Update : Wed Nov 04 12:09:03 2020
 Response via : Initial Calibration





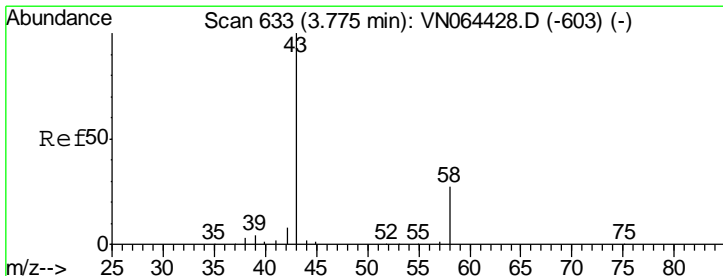
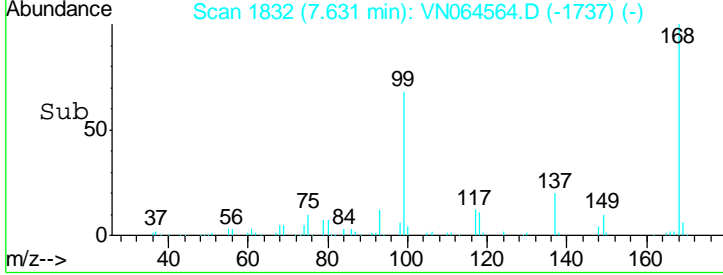
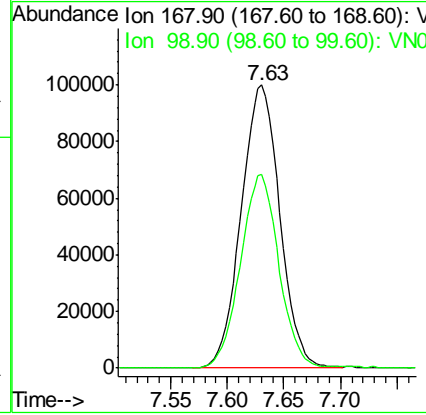
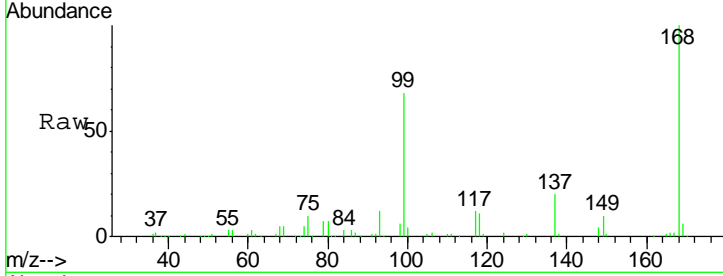
#1
 Pentafluorobenzene
 Concen: 50.000 ug/l
 RT: 7.63 min Scan# 1832
 Delta R.T. 0.01 min
 Lab File: VN064564.D
 Acq: 11 Nov 2020 18:51

Instrument :
 MSVOA_N
 ClientSampleId :
 PB132934ZHE#08

Tgt Ion	Resp	Lower	Upper
168	100		
99	68.3	53.4	80.2

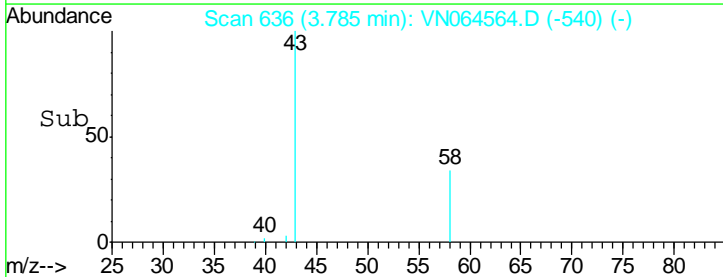
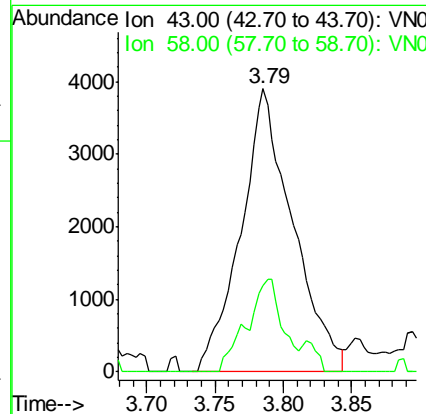
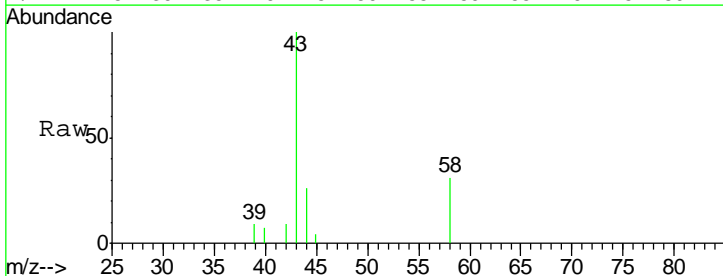
Manual Integrations
 APPROVED

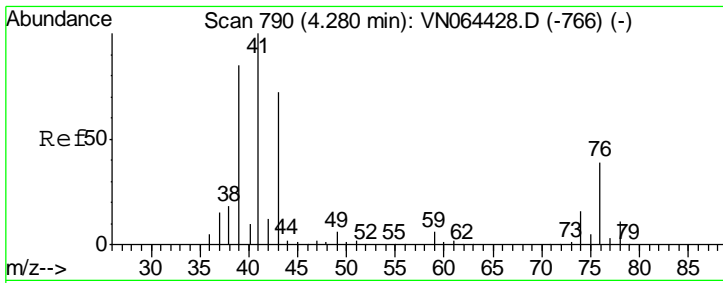
MMDadoda
 11/12/2020 9:13:01 AM



#16
 Acetone
 Concen: 6.536 ug/l
 RT: 3.79 min Scan# 636
 Delta R.T. 0.01 min
 Lab File: VN064564.D
 Acq: 11 Nov 2020 18:51

Tgt Ion	Resp	Lower	Upper
43	100		
58	30.5	21.4	32.0





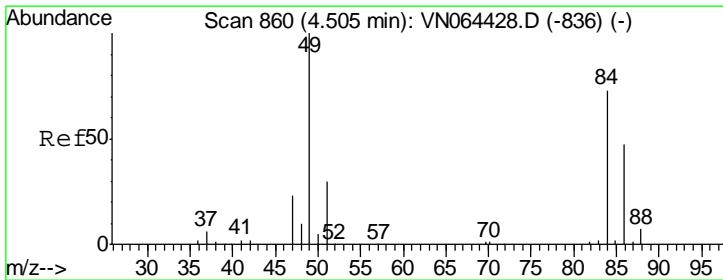
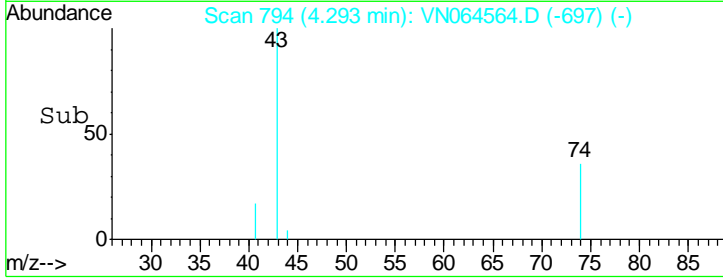
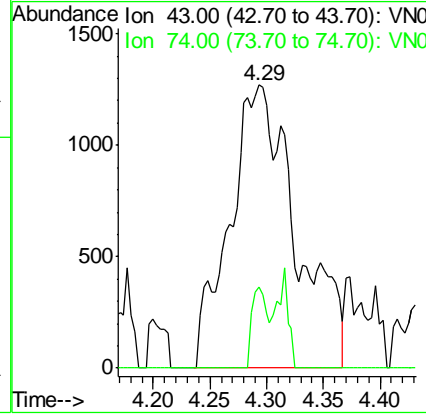
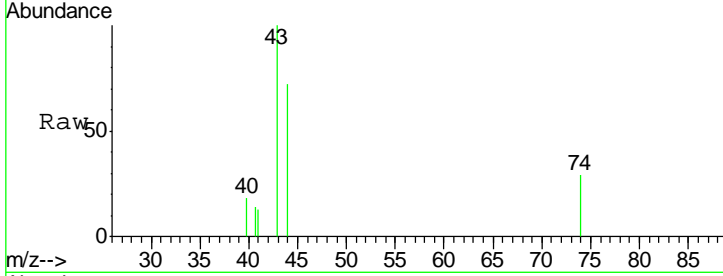
#18
 Methyl Acetate
 Concen: 1.676 ug/l m
 RT: 4.29 min Scan# 794
 Delta R.T. 0.01 min
 Lab File: VN064564.D
 Acq: 11 Nov 2020 18:51

Instrument : MSVOA_N
 ClientSampleId : PB132934ZHE#08

Tgt Ion	Ratio	Lower	Upper
43	100		
74	6.4	17.0	25.4#

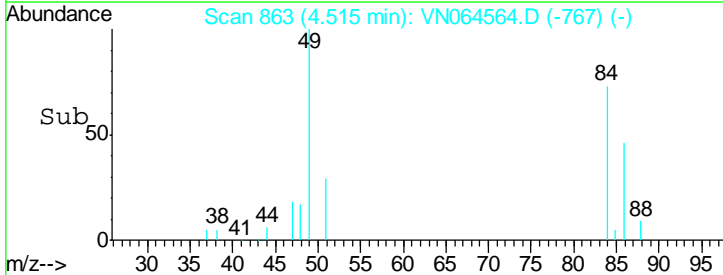
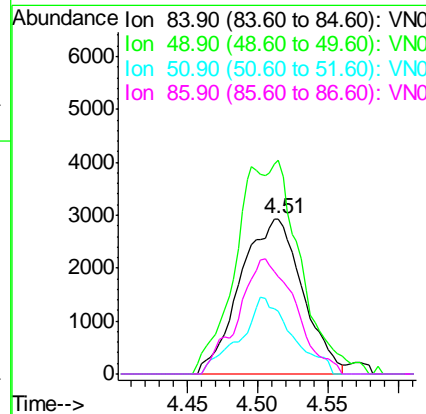
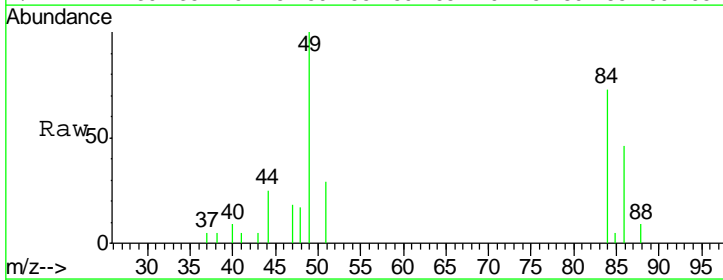
Manual Integrations
 APPROVED

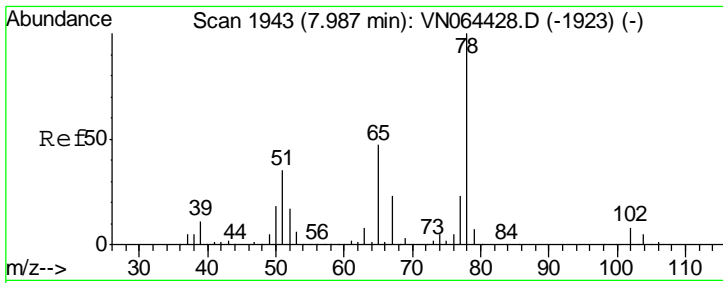
MMDadoda
 11/12/2020 9:13:01 AM



#20
 Methylene Chloride
 Concen: 2.881 ug/l
 RT: 4.51 min Scan# 863
 Delta R.T. 0.01 min
 Lab File: VN064564.D
 Acq: 11 Nov 2020 18:51

Tgt Ion	Ratio	Lower	Upper
84	100		
49	137.3	110.1	165.1
51	40.3	33.6	50.4
86	62.5	52.1	78.1





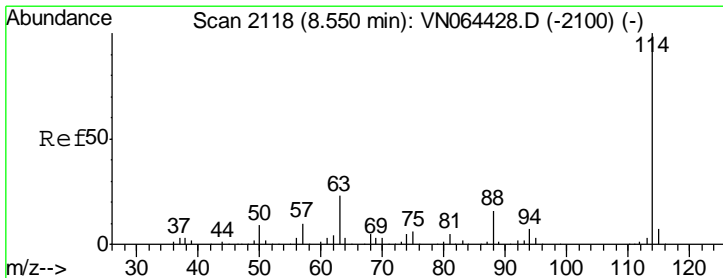
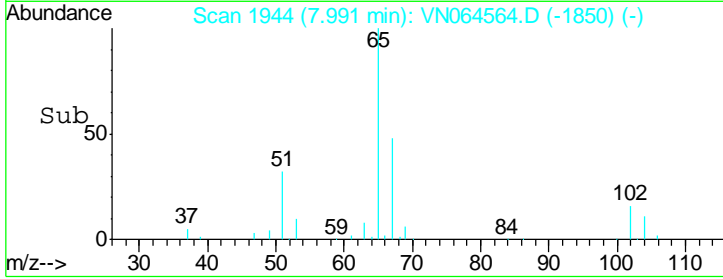
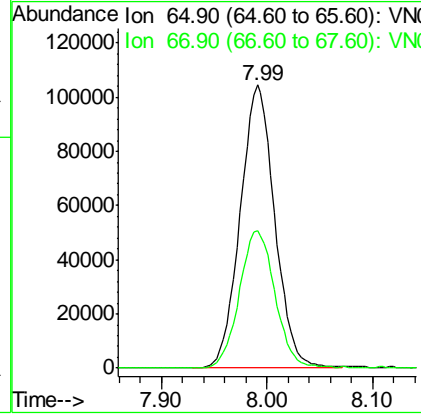
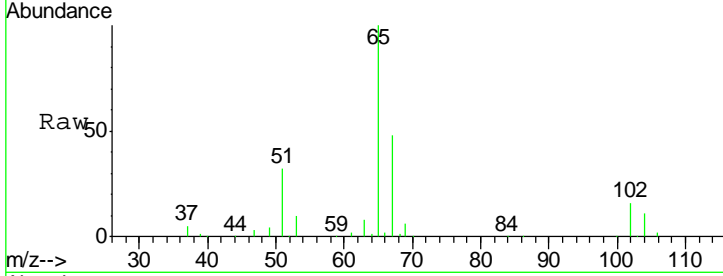
#33
 1,2-Dichloroethane-d4
 Concen: 57.368 ug/l
 RT: 7.99 min Scan# 1944
 Delta R.T. 0.00 min
 Lab File: VN064564.D
 Acq: 11 Nov 2020 18:51

Instrument :
 MSVOA_N
 ClientSampleId :
 PB132934ZHE#08

Tgt Ion	Resp	Lower	Upper
65	100		
67	50.2	0.0	101.6

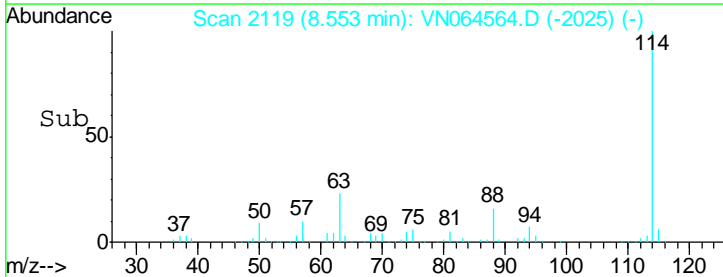
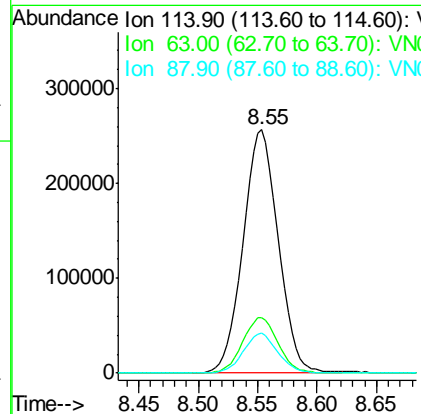
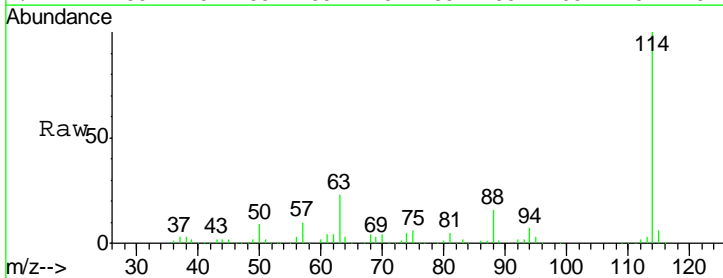
Manual Integrations
 APPROVED

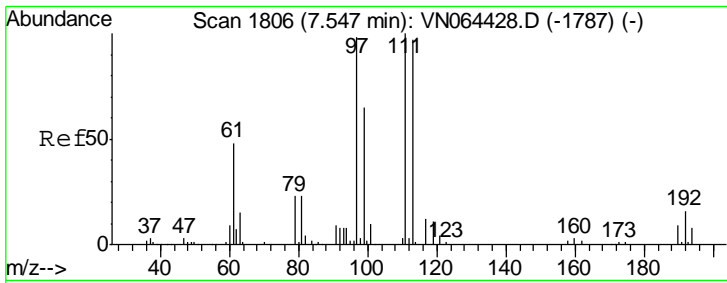
MMDadoda
 11/12/2020 9:13:01 AM



#34
 1,4-Difluorobenzene
 Concen: 50.000 ug/l
 RT: 8.55 min Scan# 2119
 Delta R.T. 0.00 min
 Lab File: VN064564.D
 Acq: 11 Nov 2020 18:51

Tgt Ion	Resp	Lower	Upper
114	100		
63	22.9	0.0	45.6
88	16.2	0.0	32.8





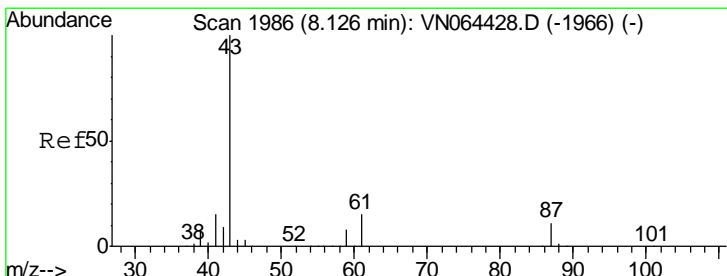
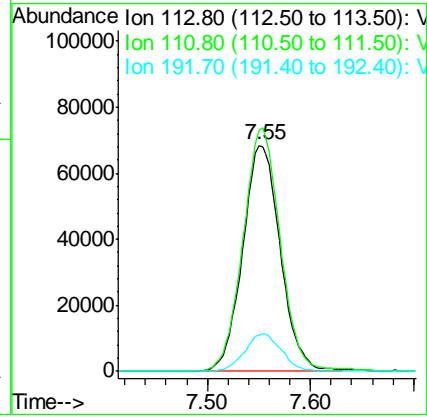
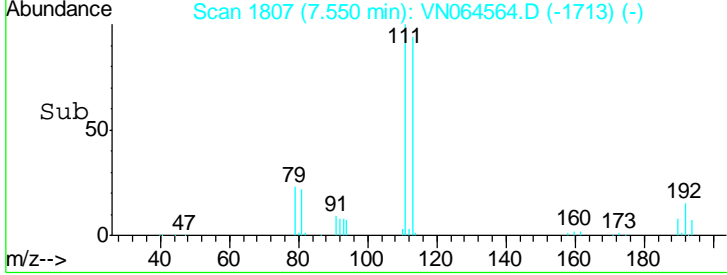
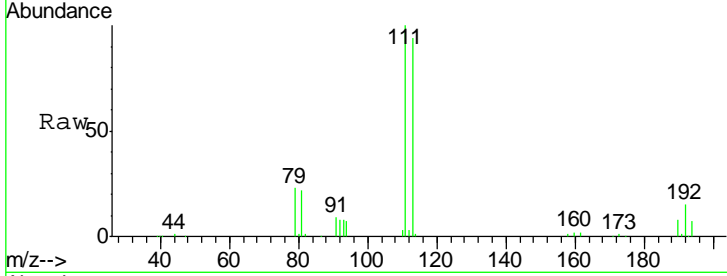
#35
 Dibromofluoromethane
 Concen: 48.314 ug/l
 RT: 7.55 min Scan# 1807
 Delta R.T. 0.00 min
 Lab File: VN064564.D
 Acq: 11 Nov 2020 18:51

Instrument : MSVOA_N
 ClientSampleID : PB132934ZHE#08

Tgt Ion	Resp	Lower	Upper
113	100		
111	107.3	81.1	121.7
192	16.2	12.8	19.2

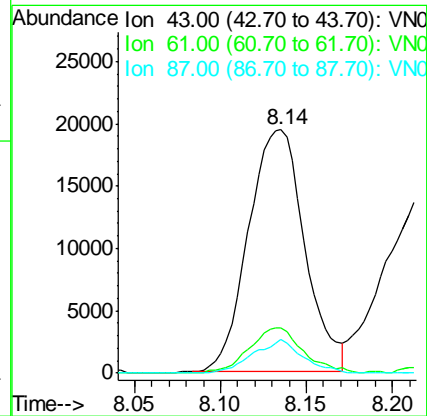
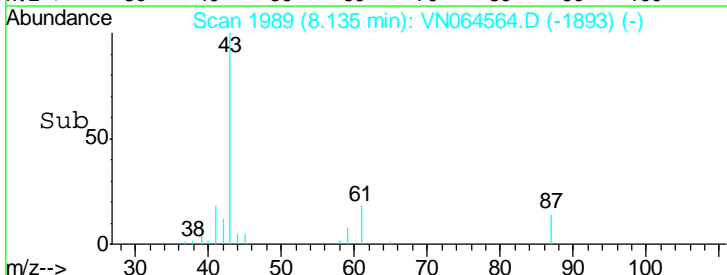
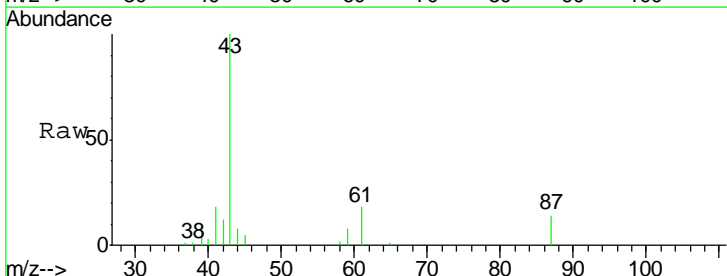
Manual Integrations
 APPROVED

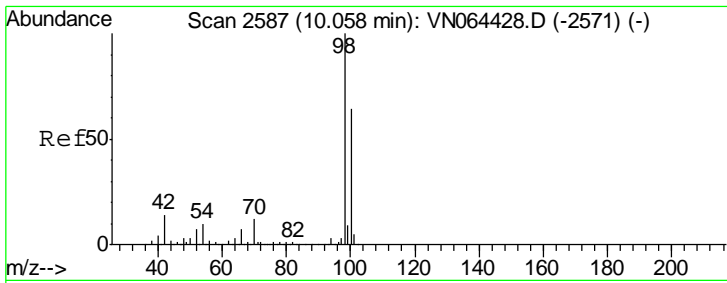
MMDadoda
 11/12/2020 9:13:01 AM



#43
 Isopropyl Acetate
 Concen: 4.890 ug/l
 RT: 8.14 min Scan# 1989
 Delta R.T. 0.01 min
 Lab File: VN064564.D
 Acq: 11 Nov 2020 18:51

Tgt Ion	Resp	Lower	Upper
43	100		
61	18.0	14.0	21.0
87	12.2	9.1	13.7



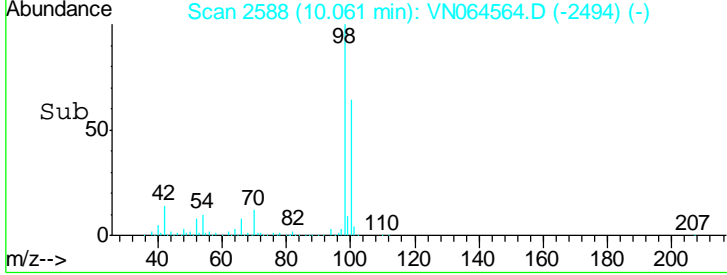
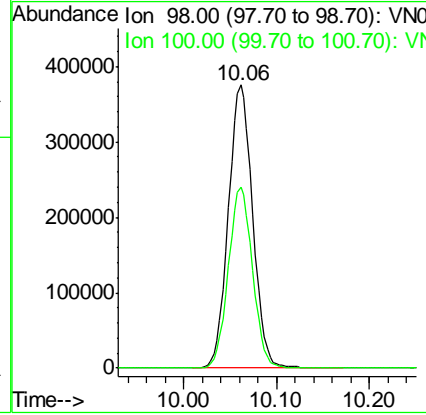
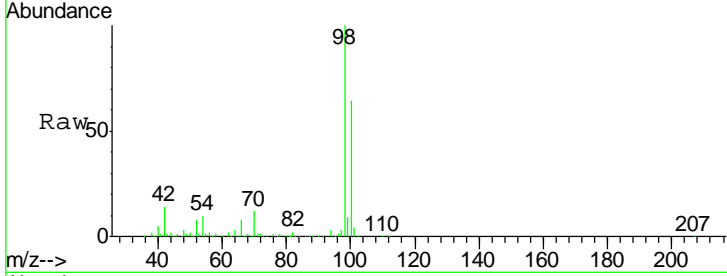


#50
 Toluene-d8
 Concen: 49.313 ug/l
 RT: 10.06 min Scan# 2588
 Delta R.T. 0.00 min
 Lab File: VN064564.D
 Acq: 11 Nov 2020 18:51

Instrument : MSVOA_N
 ClientSampled : PB132934ZHE#08

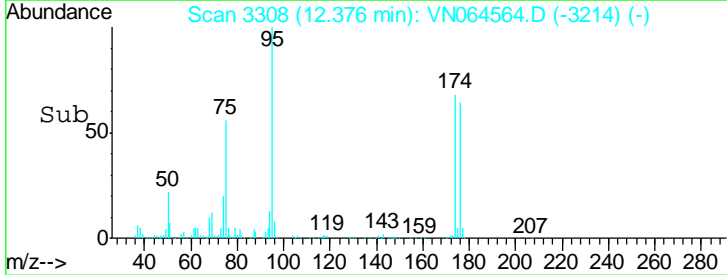
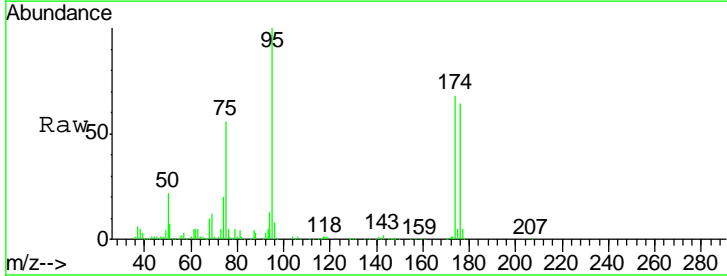
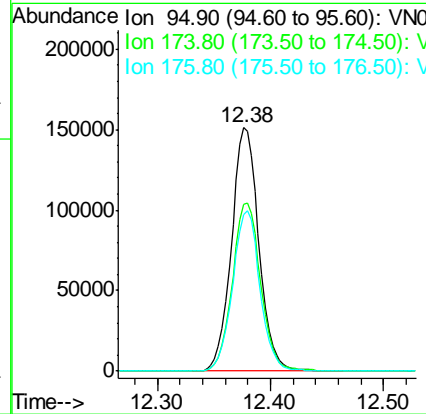
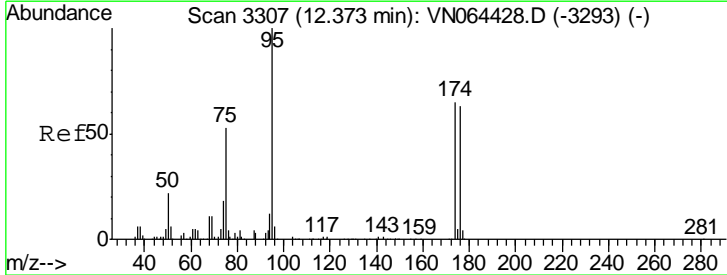
Tgt Ion	Resp	Lower	Upper
98	100		
100	63.5	50.7	76.1

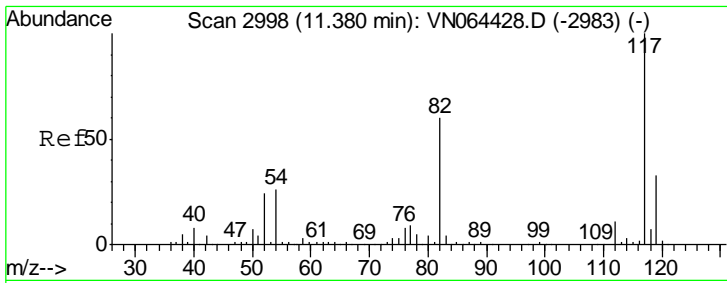
Manual Integrations APPROVED
 MMDadoda
 11/12/2020 9:13:01 AM



#62
 4-Bromofluorobenzene
 Concen: 48.540 ug/l
 RT: 12.38 min Scan# 3308
 Delta R.T. 0.00 min
 Lab File: VN064564.D
 Acq: 11 Nov 2020 18:51

Tgt Ion	Resp	Lower	Upper
95	100		
174	71.6	0.0	132.6
176	66.1	0.0	129.2



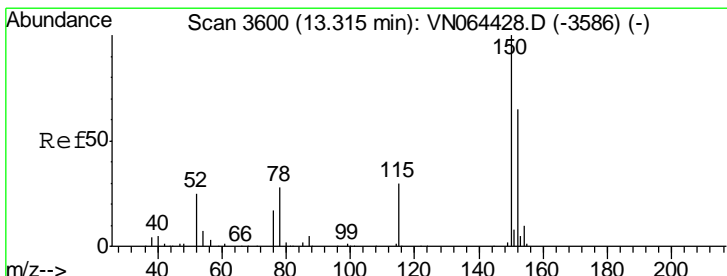
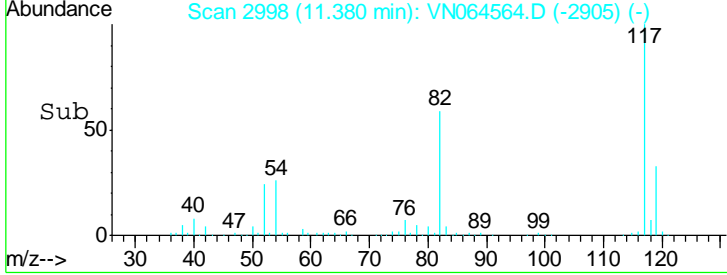
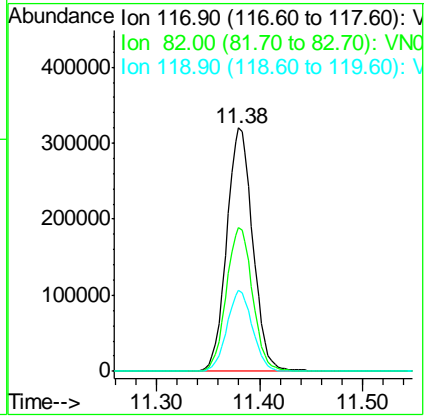
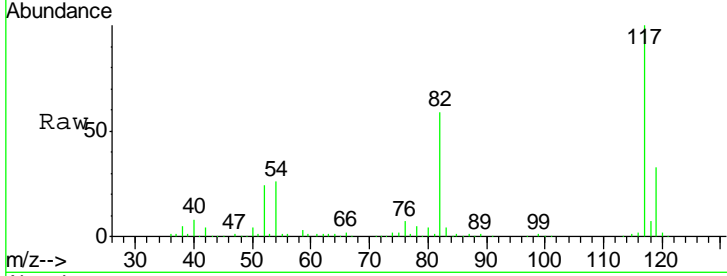


#63
 Chlorobenzene-d5
 Concen: 50.000 ug/l
 RT: 11.38 min Scan# 2998
 Delta R.T. -0.00 min
 Lab File: VN064564.D
 Acq: 11 Nov 2020 18:51

Instrument :
 MSVOA_N
 ClientSampled :
 PB132934ZHE#08

Tgt Ion	Resp	Lower	Upper
117	100		
82	59.1	48.1	72.1
119	33.1	26.2	39.4

Manual Integrations
APPROVED
 MMDadoda
 11/12/2020 9:13:01 AM



#72
 1,4-Dichlorobenzene-d4
 Concen: 50.000 ug/l
 RT: 13.32 min Scan# 3601
 Delta R.T. 0.00 min
 Lab File: VN064564.D
 Acq: 11 Nov 2020 18:51

Tgt Ion	Resp	Lower	Upper
152	100		
115	65.0	32.0	96.0
150	160.7	0.0	353.8

