

Data Path : Z:\VOASRV\HPCHEM1\MSVOA N\DATA\VN111218\  
 Data File : VN052252.D  
 Acq On : 12 Nov 2018 10:13  
 Operator : MD\SY  
 Sample : VN1112WBL01  
 Misc : 5.00mL/MSVOA N/WATER  
 ALS Vial : 3 Sample Multiplier: 28

Instrument :  
 MSVOA\_N  
 ClientSampled :  
 VN1112WBL01

Quant Time: Nov 13 00:11:45 2018  
 Quant Method : Z:\VOASRV\HPCHEM1\MSVOA\_N\METHODS\82N110918W.M  
 Quant Title : SW846 8260  
 QLast Update : Mon Nov 12 00:34:27 2018  
 Response via : Initial Calibration

Internal Standards	R.T.	QIon	Response	Conc	Units	Dev(Min)
1) Pentafluorobenzene	7.66	168	349181	50.00	ug/l	0.00
34) 1,4-Difluorobenzene	8.58	114	568071	50.00	ug/l	0.00
63) Chlorobenzene-d5	11.41	117	466753	50.00	ug/l	0.00
72) 1,4-Dichlorobenzene-d4	13.34	152	153280	50.00	ug/l	0.00

## System Monitoring Compounds

33) 1,2-Dichloroethane-d4	8.03	65	214154	44.84	ug/l	0.00
Spiked Amount	50.000		Recovery	=	89.68%	
35) Dibromofluoromethane	7.59	113	181300	49.27	ug/l	0.00
Spiked Amount	50.000		Recovery	=	98.54%	
50) Toluene-d8	10.09	98	695731	48.31	ug/l	0.00
Spiked Amount	50.000		Recovery	=	96.62%	
62) 4-Bromofluorobenzene	12.40	95	195263	41.93	ug/l	0.00
Spiked Amount	50.000		Recovery	=	83.86%	

## Target Compounds

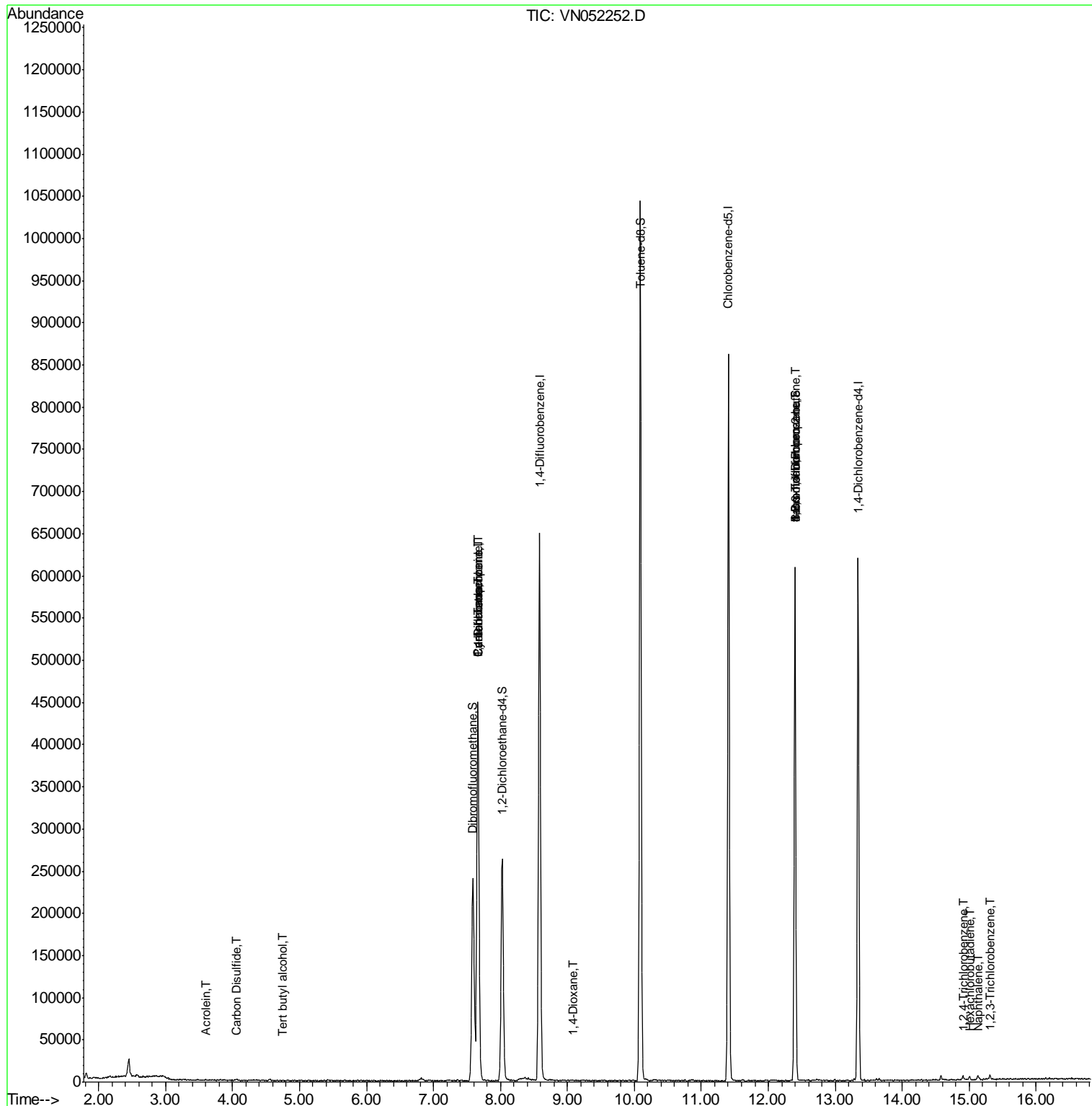
					Qvalue	
11) Tert butyl alcohol	4.74	59	65	0.266	ug/l #	71
13) Acrolein	3.62	56	591	35.443	ug/l	88
16) Acetone	3.82	43	211	Below Cal	#	46
17) Carbon Disulfide	4.06	76	2276	0.215	ug/l #	40
31) Cyclohexane	7.66	56	9396	0.591	ug/l #	12
36) 1,1-Dichloropropene	7.66	75	30270	5.279	ug/l #	51
38) Carbon Tetrachloride	7.66	117	36788	7.080	ug/l #	17
49) 1,4-Dioxane	9.09	88	30	0.942	ug/l #	21
71) Bromoform	12.40	173	1711	0.856	ug/l #	1
76) 1,2,3-Trichloropropane	12.40	75	107067	39.480	ug/l #	100
81) trans-1,4-Dichloro-2-buten	12.40	75	107067	134.763	ug/l #	8
93) 1,2,4-Trichlorobenzene	14.90	180	1343	0.682	ug/l #	85
94) Hexachlorobutadiene	15.01	225	625	0.584	ug/l	85
95) Naphthalene	15.13	128	3794	0.781	ug/l #	92
96) 1,2,3-Trichlorobenzene	15.31	180	1578	0.847	ug/l	84

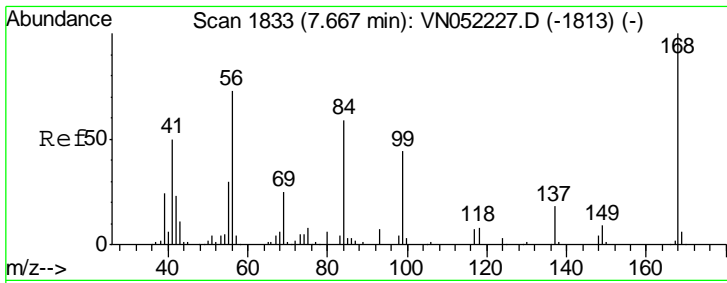
(#) = qualifier out of range (m) = manual integration (+) = signals summed

Data Path : Z:\VOASRV\HPCHEM1\MSVOA N\DATA\VN111218\  
 Data File : VN052252.D  
 Acq On : 12 Nov 2018 10:13  
 Operator : MD\SY  
 Sample : VN1112WBL01  
 Misc : 5.00mL/MSVOA N/WATER  
 ALS Vial : 3 Sample Multiplier: 28

Instrument :  
 MSVOA\_N  
 Client Sample Id :  
 VN1112WBL01

Quant Time: Nov 13 00:11:45 2018  
 Quant Method : Z:\VOASRV\HPCHEM1\MSVOA\_N\METHODS\82N110918W.M  
 Quant Title : SW846 8260  
 QLast Update : Mon Nov 12 00:34:27 2018  
 Response via : Initial Calibration

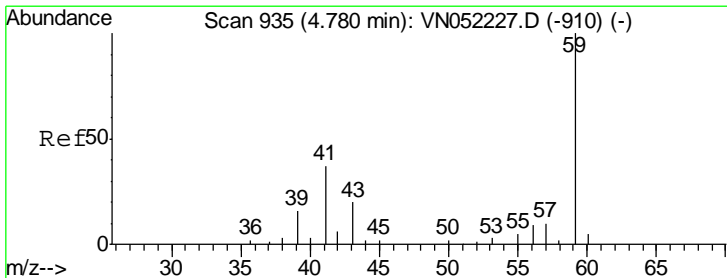
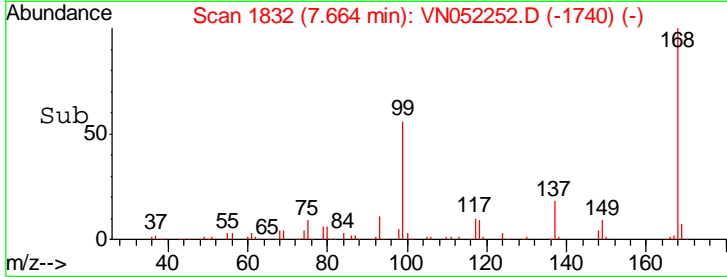
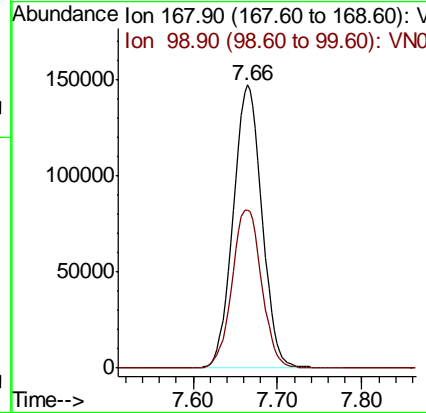
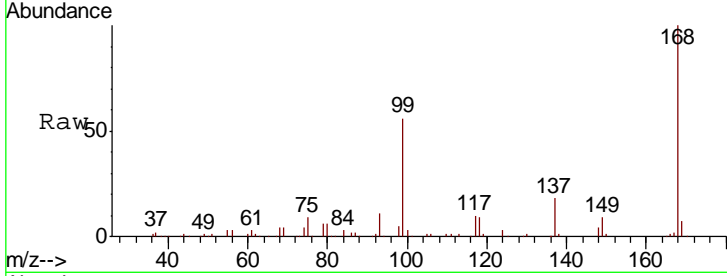




#1  
 Pentafluorobenzene  
 Concen: 50.000 ug/l  
 RT: 7.66 min Scan# 1832  
 Delta R.T. -0.00 min  
 Lab File: VN052252.D  
 Acq: 12 Nov 2018 10:13

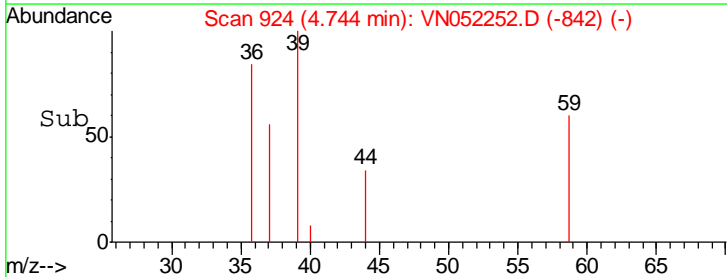
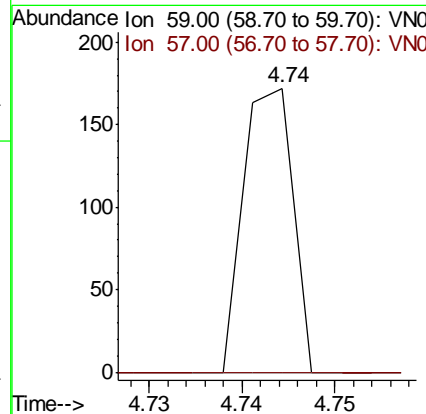
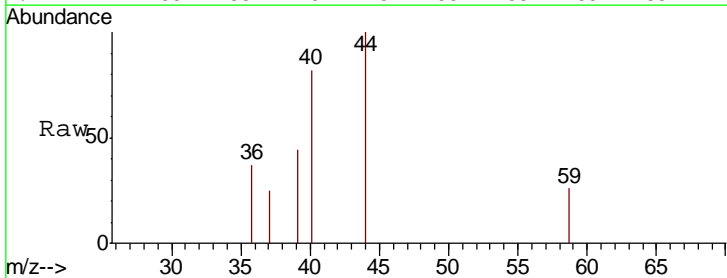
Instrument :  
 MSVOA\_N  
 ClientSampled :  
 VN1112WBL01

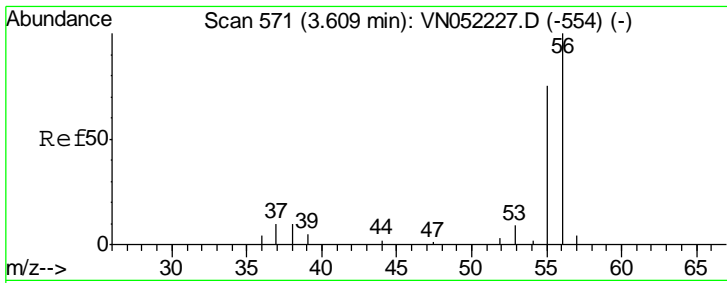
Tot Ion:168 Resp: 349181  
 Ion Ratio Lower Upper  
 168 100  
 99 55.9 44.7 67.1



#11  
 Tert butyl alcohol  
 Concen: 0.266 ug/l  
 RT: 4.74 min Scan# 924  
 Delta R.T. -0.04 min  
 Lab File: VN052252.D  
 Acq: 12 Nov 2018 10:13

Tgt Ion: 59 Resp: 65  
 Ion Ratio Lower Upper  
 59 100  
 57 0.0 8.8 13.2#

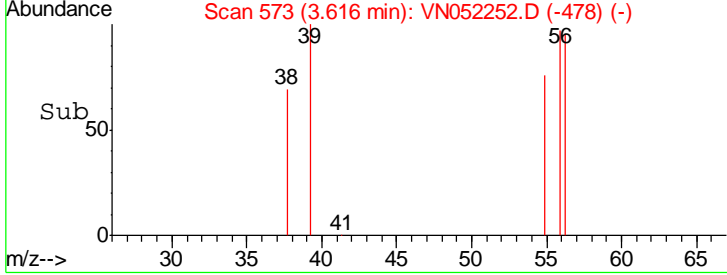
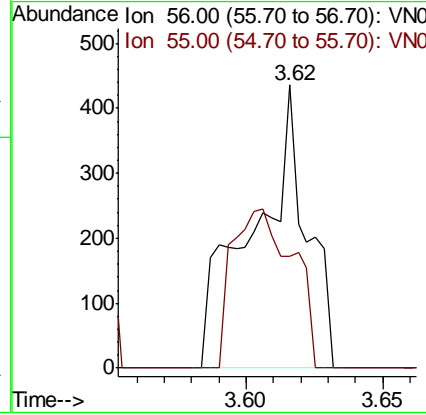
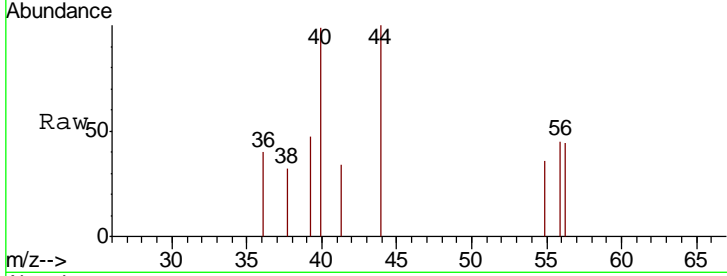




#13  
 Acrolein  
 Concen: 35.443 ug/l  
 RT: 3.62 min Scan# 573  
 Delta R.T. 0.01 min  
 Lab File: VN052252.D  
 Acq: 12 Nov 2018 10:13

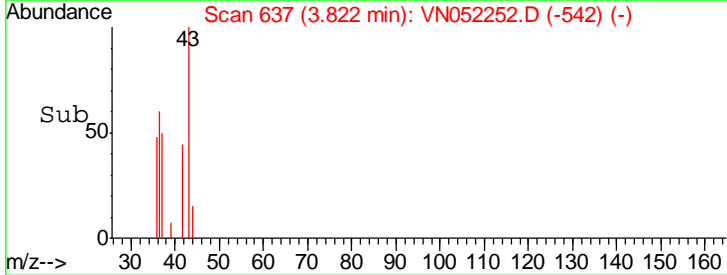
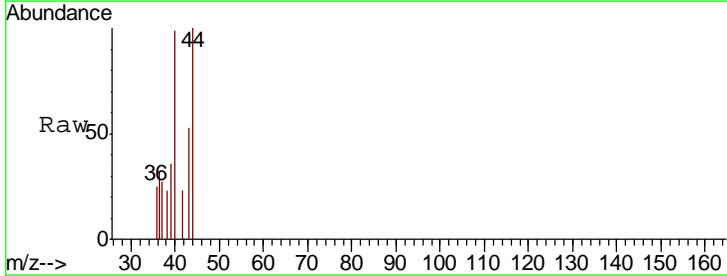
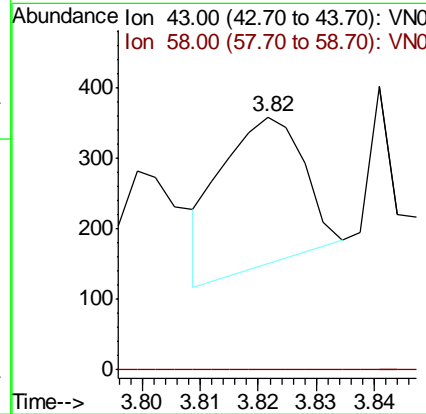
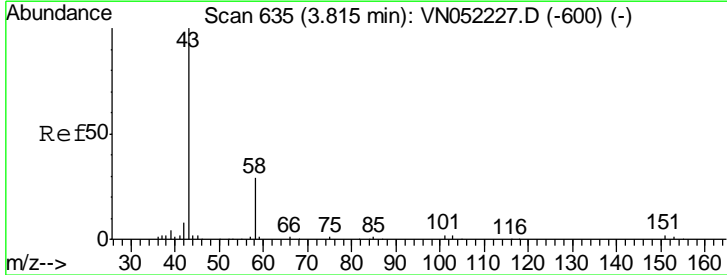
Instrument : MSVOA\_N  
 ClientSampled : VN1112WBL01

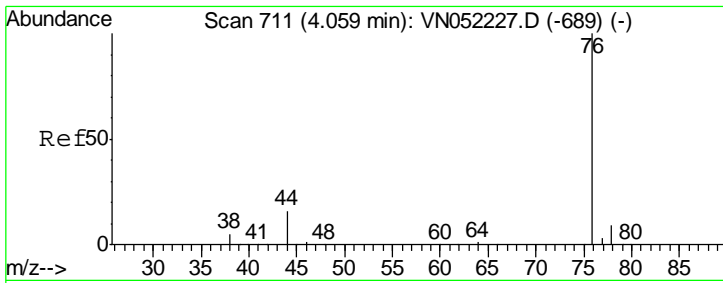
Tgt Ion	Resp	Lower	Upper
56	100		
55	64.5	59.9	89.9



#16  
 Acetone  
 Concen: Below Cal  
 RT: 3.82 min Scan# 637  
 Delta R.T. 0.01 min  
 Lab File: VN052252.D  
 Acq: 12 Nov 2018 10:13

Tgt Ion	Resp	Lower	Upper
43	100		
58	0.0	23.0	34.6#

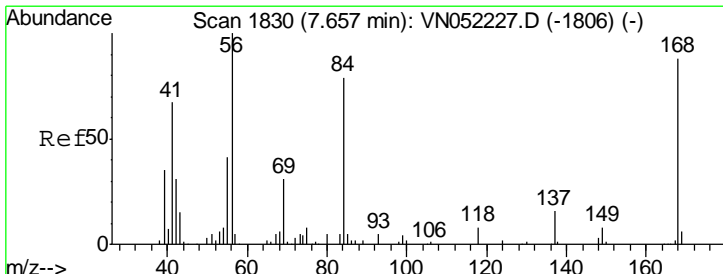
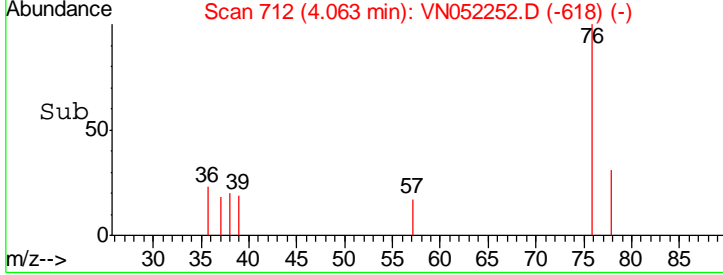
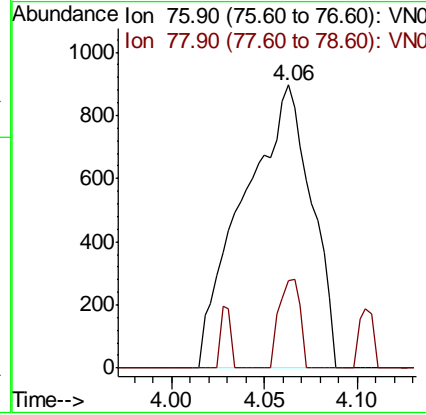
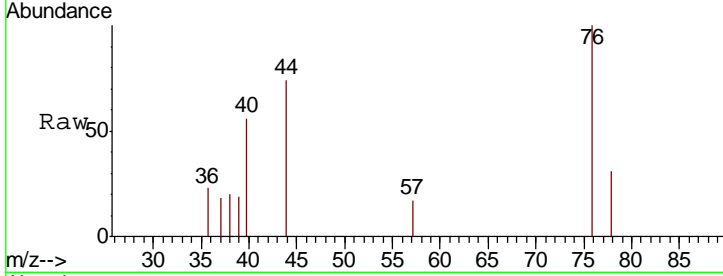




#17  
 Carbon Disulfide  
 Concen: 0.215 ug/l  
 RT: 4.06 min Scan# 712  
 Delta R.T. 0.00 min  
 Lab File: VN052252.D  
 Acq: 12 Nov 2018 10:13

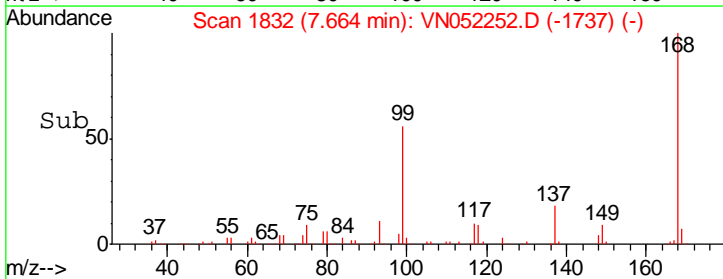
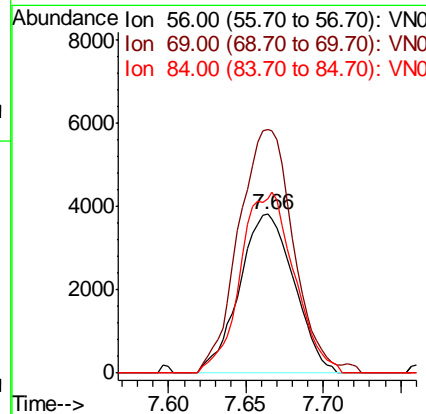
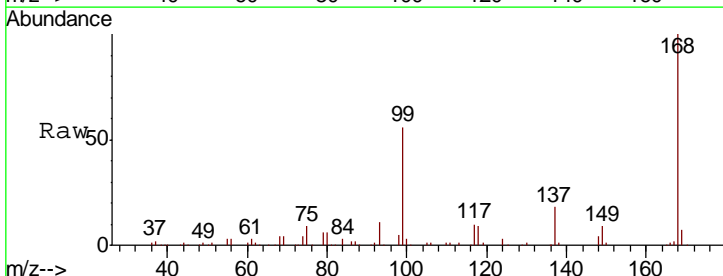
Instrument :  
 MSVOA\_N  
 ClientSampleId :  
 VN1112WBL01

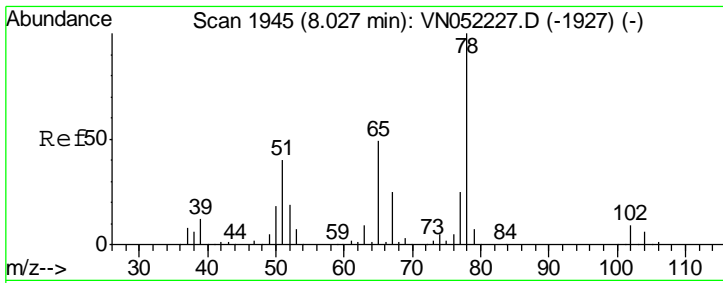
Tgt Ion	Resp	Lower	Upper
76	2276		
78	30.9	7.3	10.9#



#31  
 Cyclohexane  
 Concen: 0.591 ug/l  
 RT: 7.66 min Scan# 1832  
 Delta R.T. 0.01 min  
 Lab File: VN052252.D  
 Acq: 12 Nov 2018 10:13

Tgt Ion	Resp	Lower	Upper
56	9396		
69	153.1	24.8	37.2#
84	109.6	63.1	94.7#

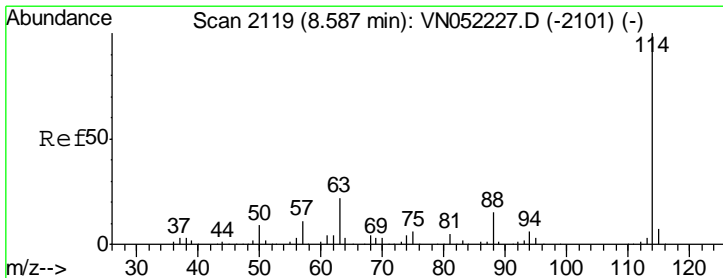
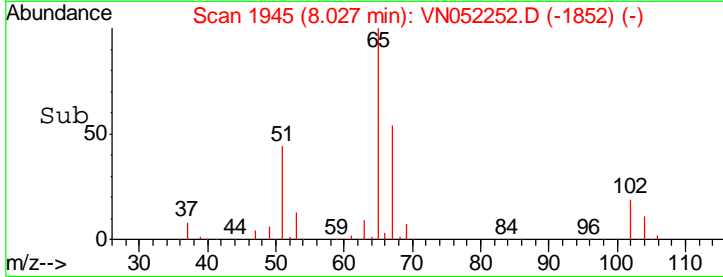
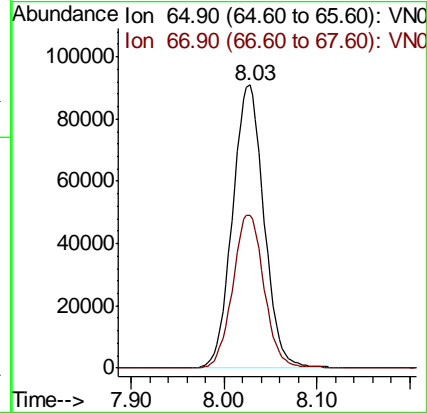
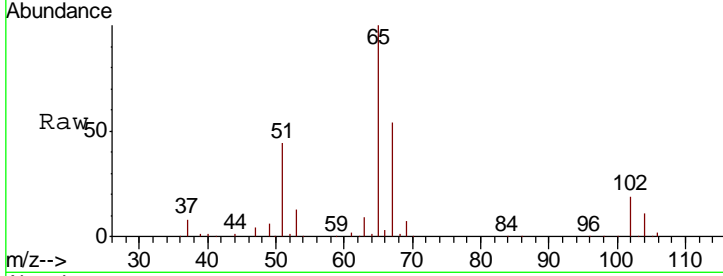




#33  
 1,2-Dichloroethane-d4  
 Concen: Below ug/l  
 RT: 8.03 min Scan# 1945  
 Delta R.T. 0.00 min  
 Lab File: VN052252.D  
 Acq: 12 Nov 2018 10:13

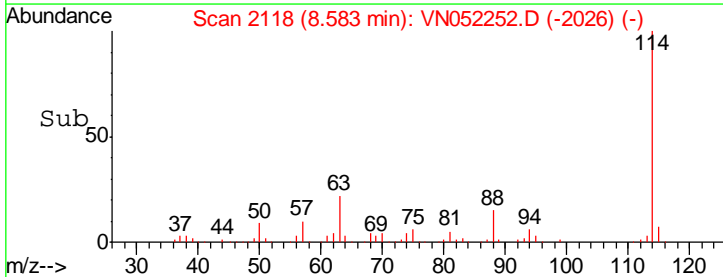
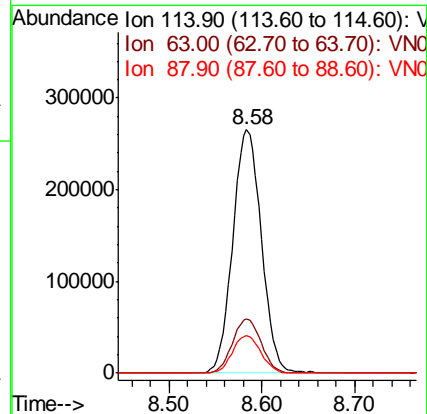
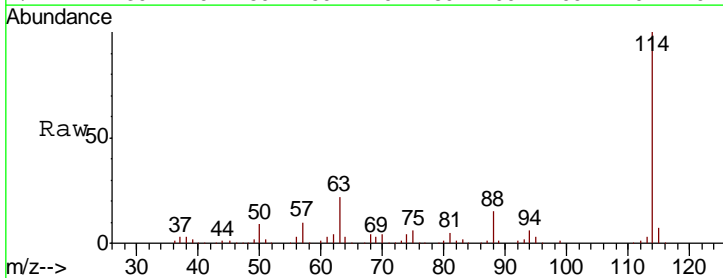
Instrument :  
 MSVOA\_N  
 ClientSampled :  
 VN1112WBL01

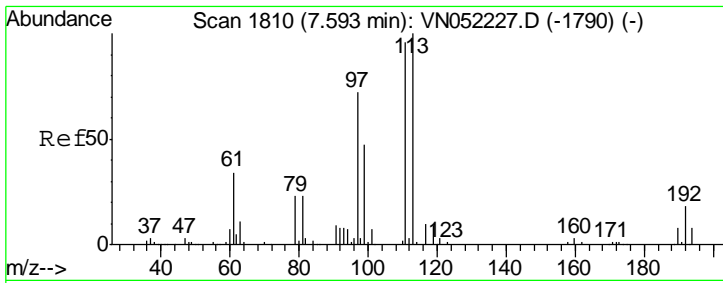
Tgt Ion: 65 Resp: 214154  
 Ion Ratio Lower Upper  
 65 100  
 67 53.6 0.0 106.6



#34  
 1,4-Difluorobenzene  
 Concen: 50.000 ug/l  
 RT: 8.58 min Scan# 2118  
 Delta R.T. -0.00 min  
 Lab File: VN052252.D  
 Acq: 12 Nov 2018 10:13

Tgt Ion: 114 Resp: 568071  
 Ion Ratio Lower Upper  
 114 100  
 63 22.4 0.0 43.4  
 88 15.3 0.0 30.2

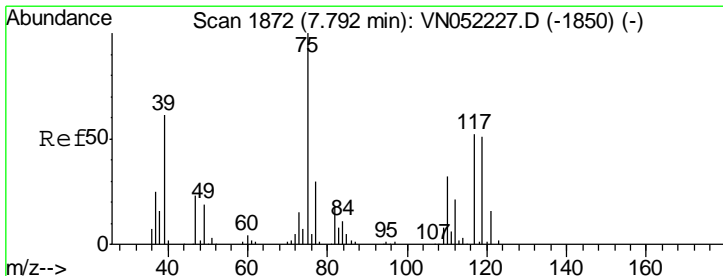
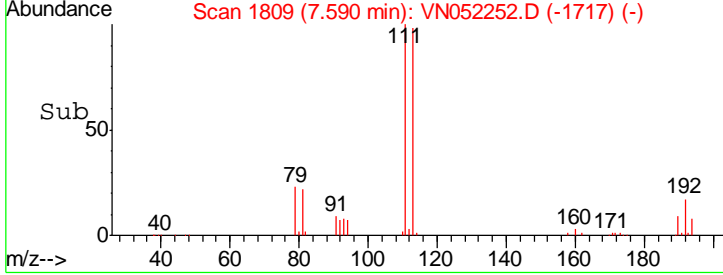
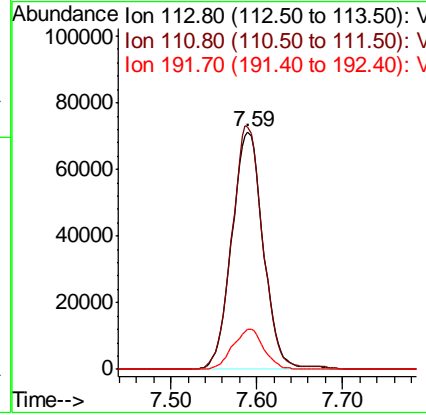
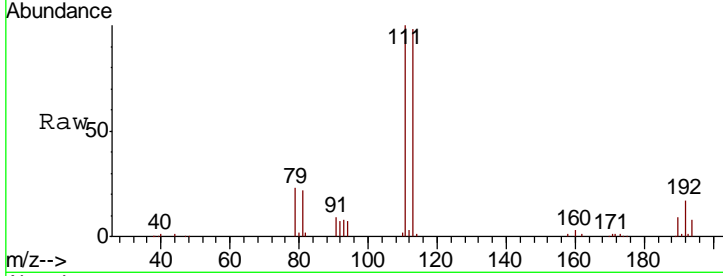




#35  
 Dibromofluoromethane  
 Concen: 50.000 ug/l  
 RT: 7.59 min Scan# 1809  
 Delta R.T. -0.00 min  
 Lab File: VN052252.D  
 Acq: 12 Nov 2018 10:13

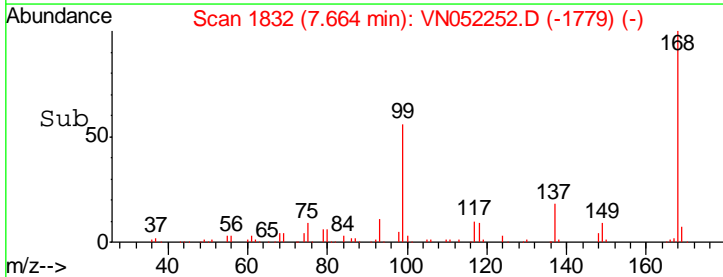
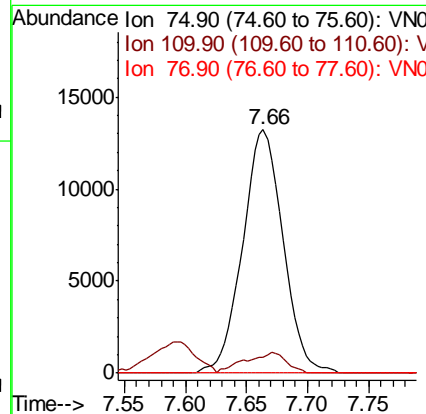
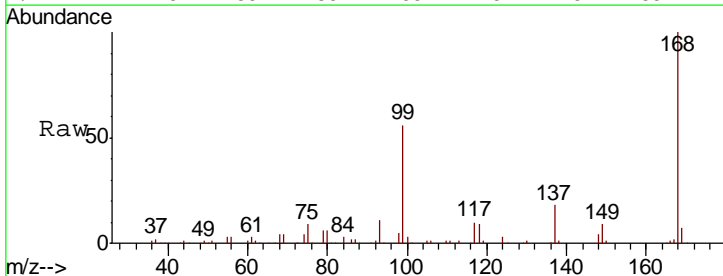
Instrument :  
 MSVOA\_N  
 ClientSampled :  
 VN1112WBL01

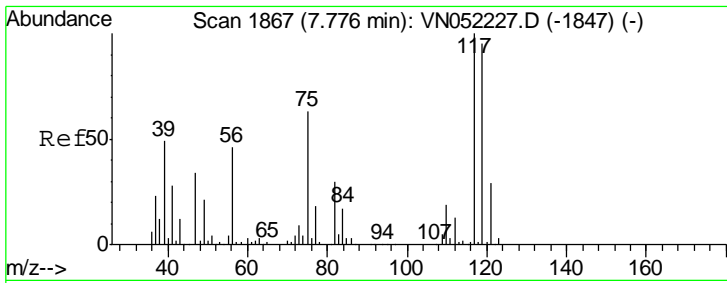
Tgt Ion	Resp	Lower	Upper
113	181300		
111	100.2	80.2	120.4
192	16.6	14.1	21.1



#36  
 1,1-Dichloropropene  
 Concen: 5.279 ug/l  
 RT: 7.66 min Scan# 1832  
 Delta R.T. -0.13 min  
 Lab File: VN052252.D  
 Acq: 12 Nov 2018 10:13

Tgt Ion	Resp	Lower	Upper
75	30270		
110	8.7	16.4	49.4#
77	0.0	23.9	35.9#

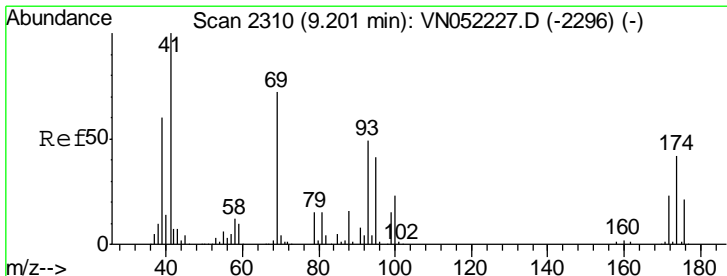
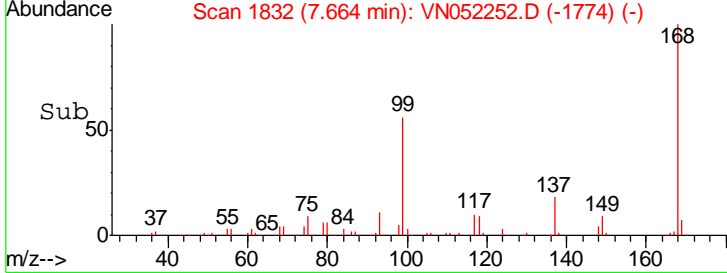
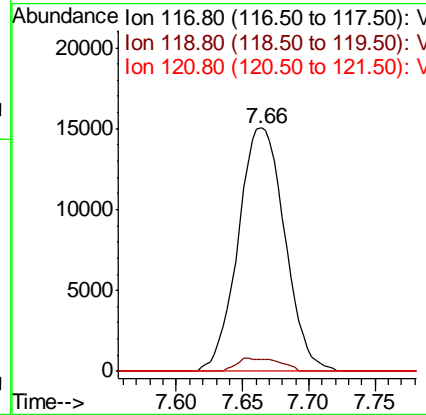
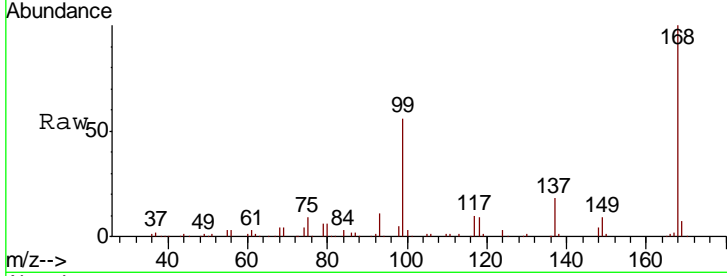




#38  
 Carbon Tetrachloride  
 Concen: 7.080 ug/l  
 RT: 7.66 min Scan# 1832  
 Delta R.T. -0.11 min  
 Lab File: VN052252.D  
 Acq: 12 Nov 2018 10:13

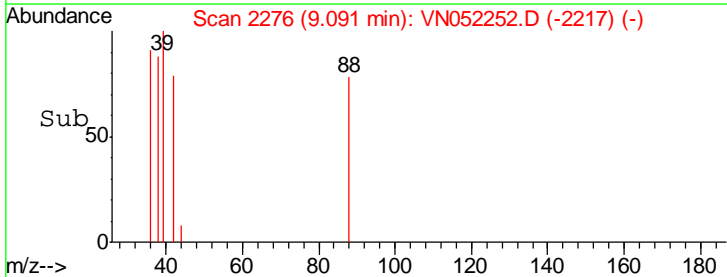
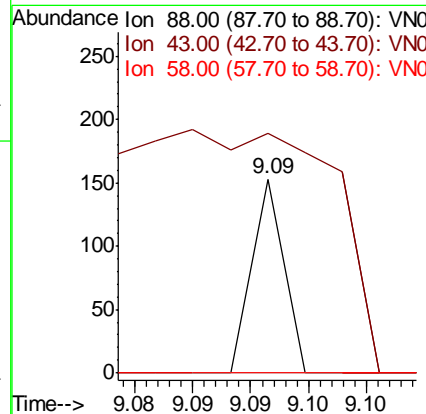
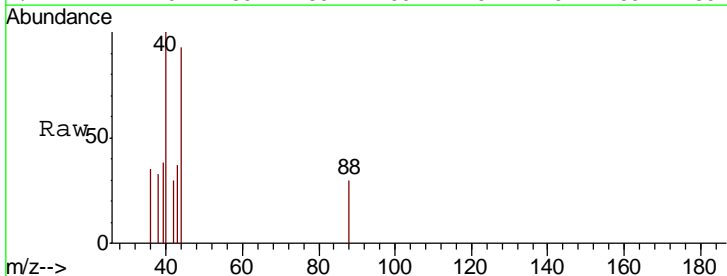
Instrument :  
 MSVOA\_N  
 ClientSampled :  
 VN1112WBL01

Tgt Ion	Resp	Lower	Upper
117	36788		
119	5.2	75.8	113.8#
121	0.0	23.4	35.2#

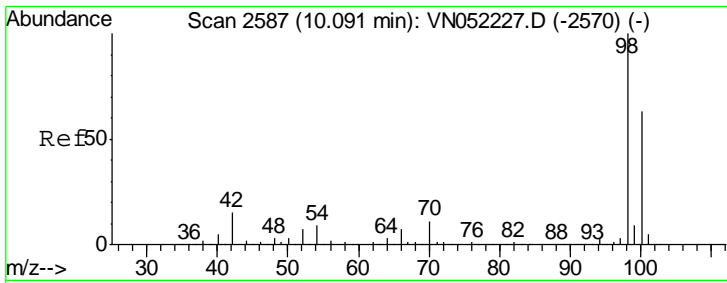


#49  
 1,4-Dioxane  
 Concen: 0.942 ug/l  
 RT: 9.09 min Scan# 2276  
 Delta R.T. -0.11 min  
 Lab File: VN052252.D  
 Acq: 12 Nov 2018 10:13

Tgt Ion	Resp	Lower	Upper
88	30		
43	0.0	32.5	48.7#
58	0.0	58.2	87.4#



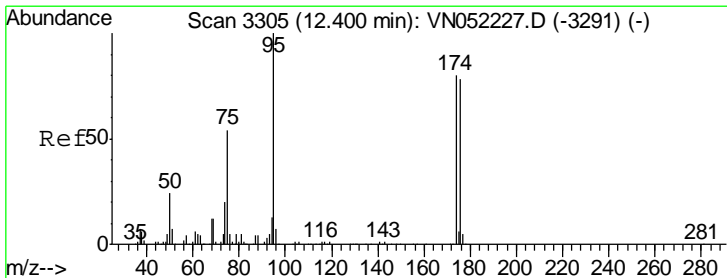
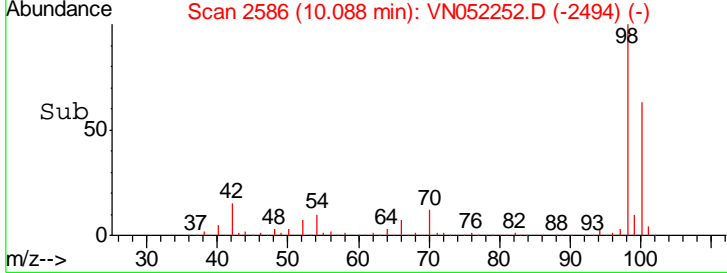
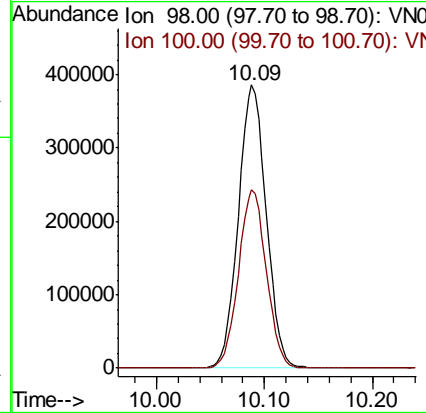
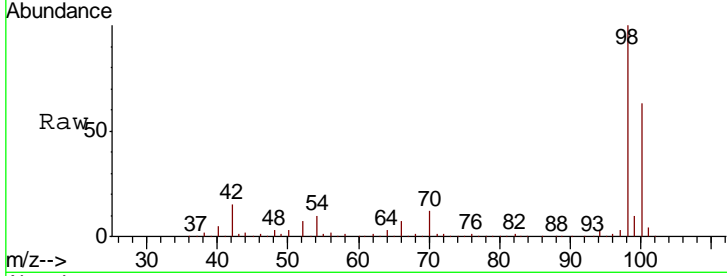




#50  
 Toluene-d8  
 Concen: 0.942 ug/l  
 RT: 10.09 min Scan# 2586  
 Delta R.T. -0.00 min  
 Lab File: VN052252.D  
 Acq: 12 Nov 2018 10:13

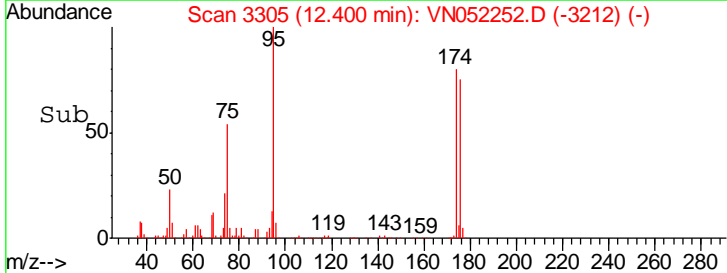
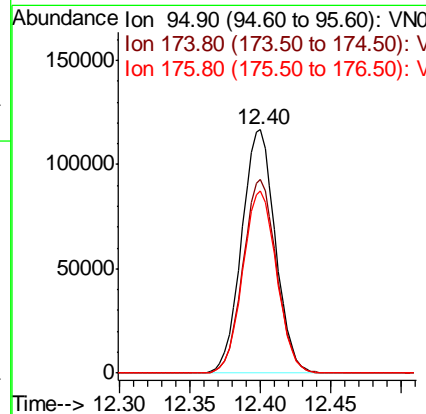
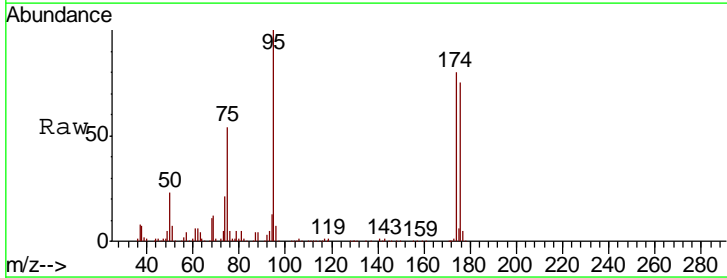
Instrument :  
 MSVOA\_N  
 ClientSampled :  
 VN1112WBL01

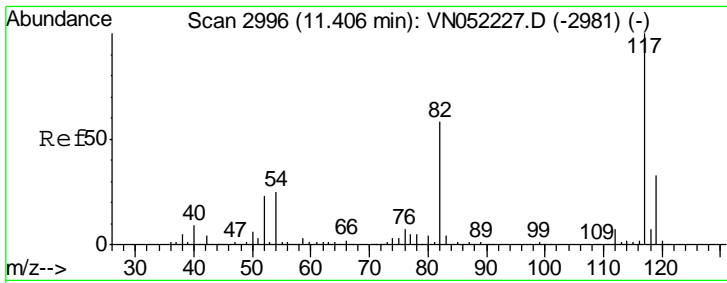
Tgt Ion: 98 Resp: 695731  
 Ion Ratio Lower Upper  
 98 100  
 100 62.9 50.2 75.2



#62  
 4-Bromofluorobenzene  
 Concen: N.D. ug/l  
 RT: 12.40 min Scan# 3305  
 Delta R.T. 0.00 min  
 Lab File: VN052252.D  
 Acq: 12 Nov 2018 10:13

Tgt Ion: 95 Resp: 195263  
 Ion Ratio Lower Upper  
 95 100  
 174 79.3 0.0 159.4  
 176 75.3 0.0 157.8

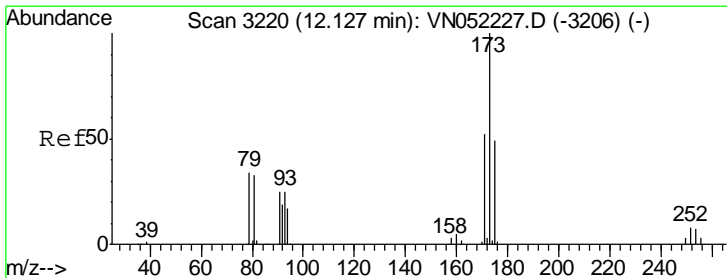
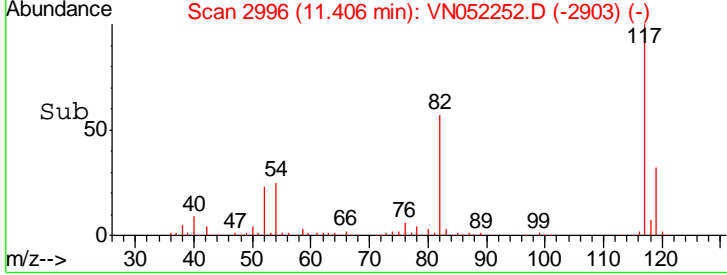
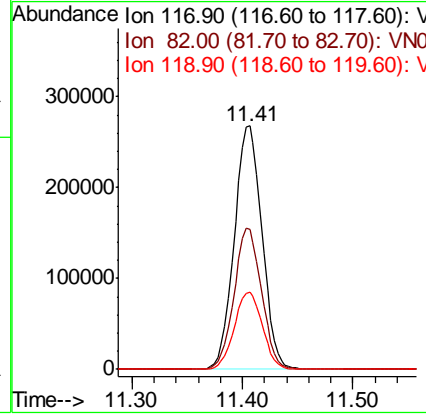
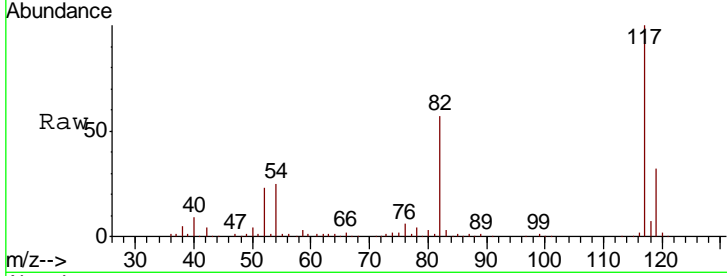




#63  
 Chlorobenzene-d5  
 Concen: 50.000 ug/l  
 RT: 11.41 min Scan# 2996  
 Delta R.T. 0.00 min  
 Lab File: VN052252.D  
 Acq: 12 Nov 2018 10:13

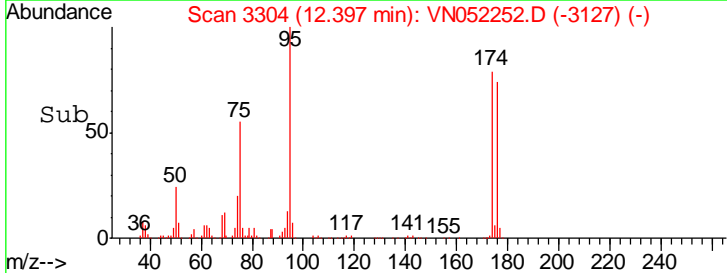
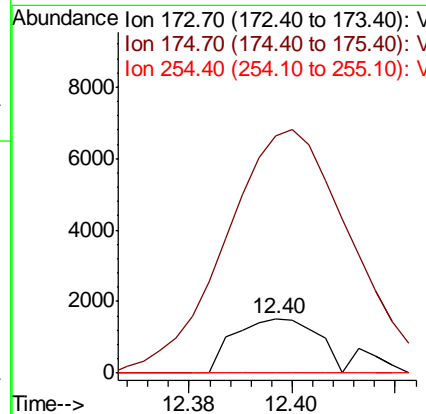
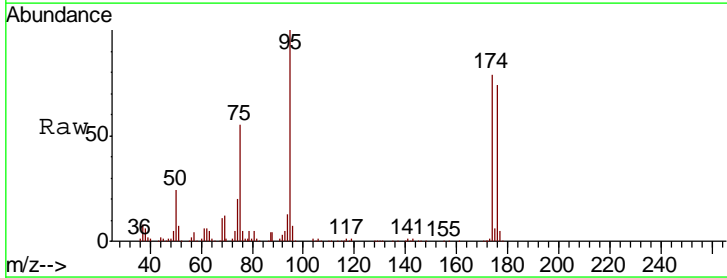
Instrument :  
 MSVOA\_N  
 ClientSampled :  
 VN1112WBL01

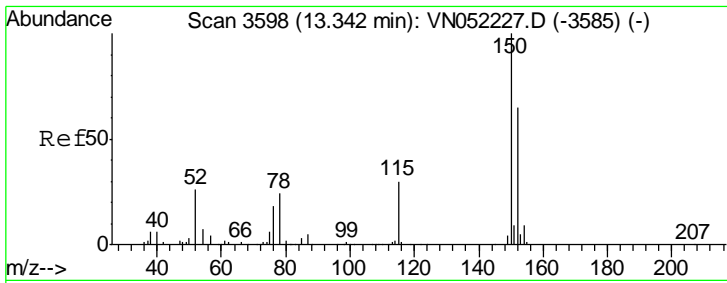
Tgt Ion	Resp	Lower	Upper
117	466753		
82	57.3	46.2	69.2
119	31.7	26.2	39.4



#71  
 Bromoform  
 Concen: 0.856 ug/l  
 RT: 12.40 min Scan# 3304  
 Delta R.T. 0.27 min  
 Lab File: VN052252.D  
 Acq: 12 Nov 2018 10:13

Tgt Ion	Resp	Lower	Upper
173	1711		
175	607.2	24.5	73.5#
254	0.0	0.0	0.0

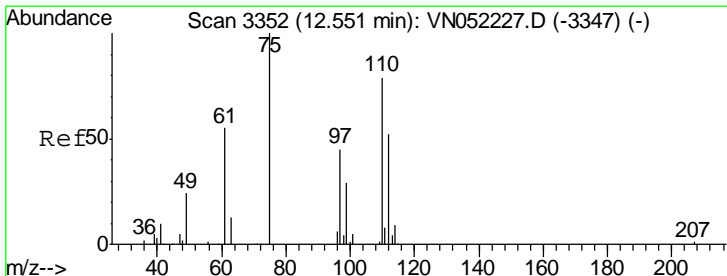
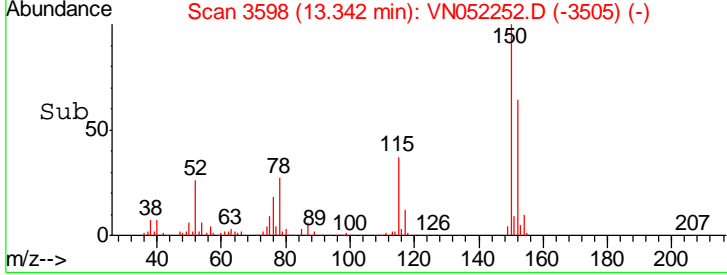
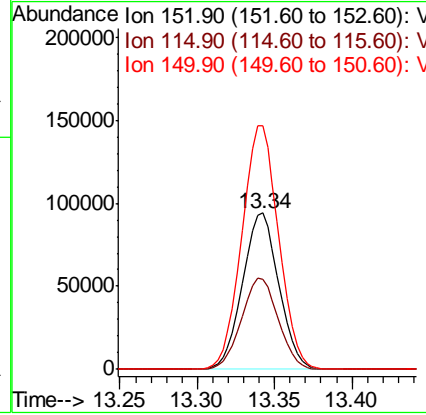
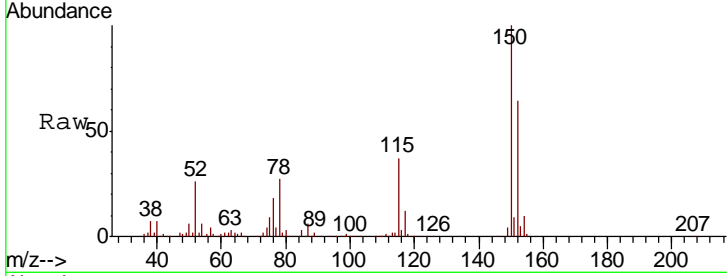




#72  
 1,4-Dichlorobenzene-d4  
 Concen: 50.000 ug/l  
 RT: 13.34 min Scan# 3598  
 Delta R.T. 0.00 min  
 Lab File: VN052252.D  
 Acq: 12 Nov 2018 10:13

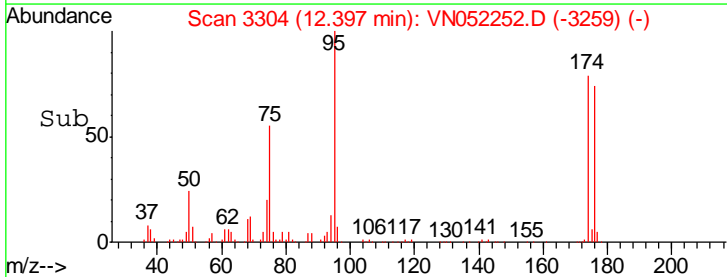
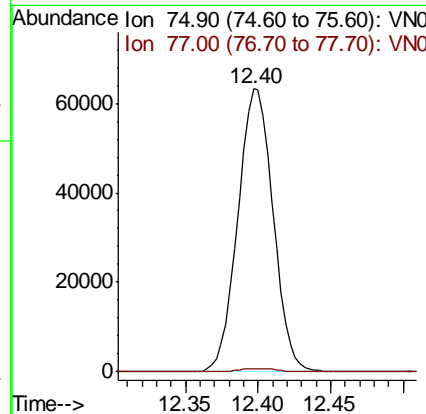
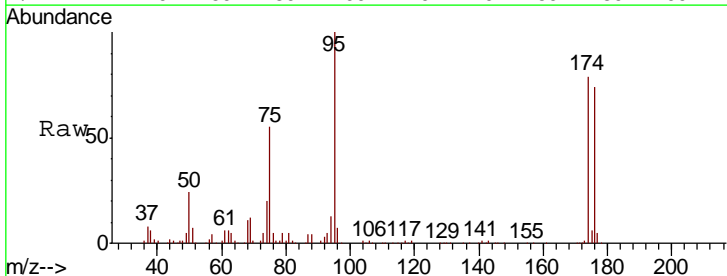
Instrument :  
 MSVOA\_N  
 ClientSampled :  
 VN1112WBL01

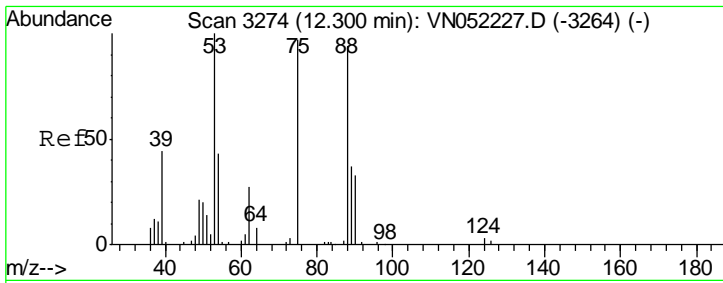
Tgt Ion	Resp	Lower	Upper
152	100		
115	58.9	29.8	89.5
150	158.0	0.0	350.2



#76  
 1,2,3-Trichloropropane  
 Concen: 39.480 ug/l  
 RT: 12.40 min Scan# 3304  
 Delta R.T. -0.15 min  
 Lab File: VN052252.D  
 Acq: 12 Nov 2018 10:13

Tgt Ion	Resp	Lower	Upper
75	100		
77	1.3	0.0	0.0#

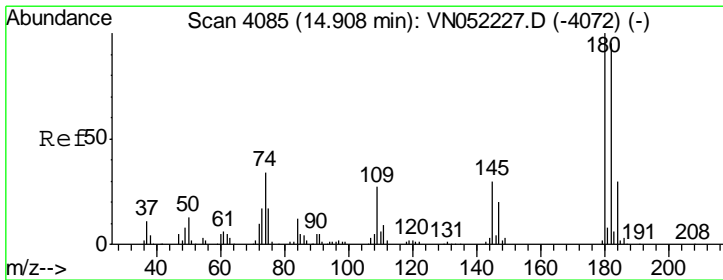
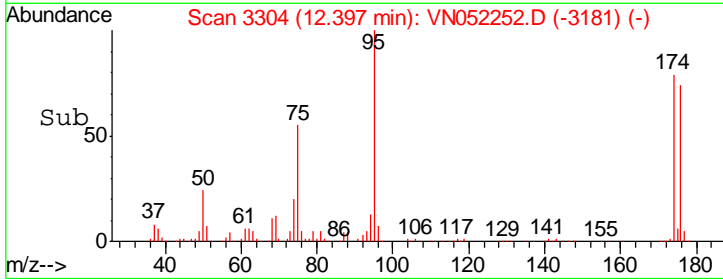
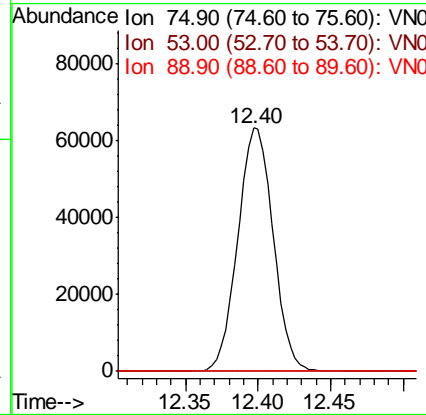
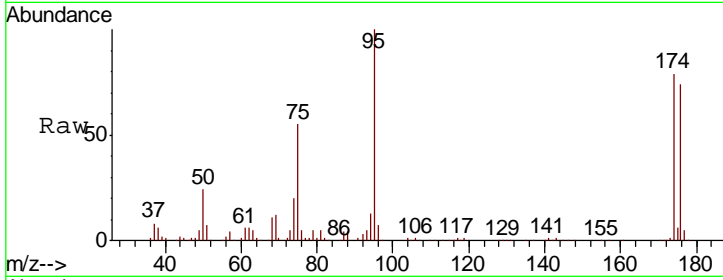




#81  
 trans-1,4-Dichloro-2-butene  
 Concen: 134.763 ug/l  
 RT: 12.40 min Scan# 3304  
 Delta R.T. 0.10 min  
 Lab File: VN052252.D  
 Acq: 12 Nov 2018 10:13

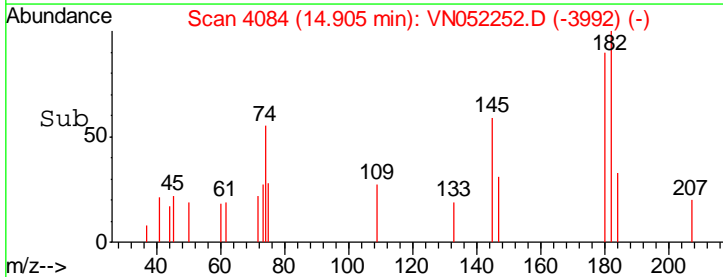
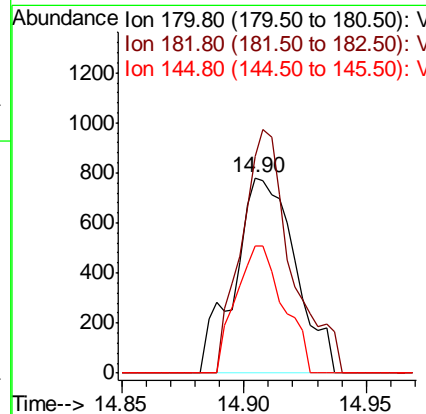
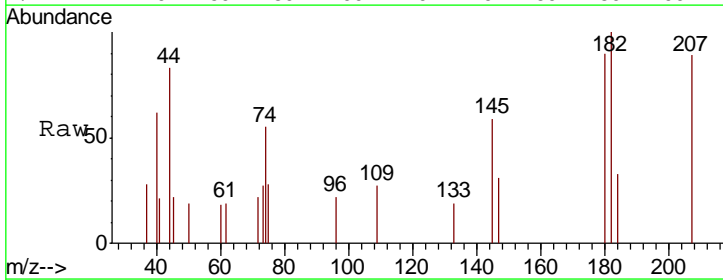
Instrument :  
 MSVOA\_N  
 ClientSampled :  
 VN1112WBL01

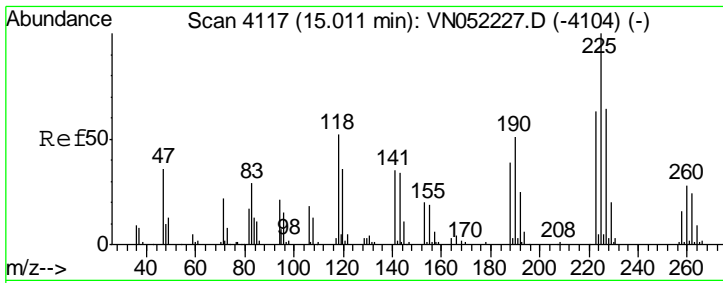
Tgt Ion	Resp	Lower	Upper
75	107067		
53	0.0	84.0	126.0#
89	0.0	33.7	50.5#



#93  
 1,2,4-Trichlorobenzene  
 Concen: 0.682 ug/l  
 RT: 14.90 min Scan# 4084  
 Delta R.T. -0.00 min  
 Lab File: VN052252.D  
 Acq: 12 Nov 2018 10:13

Tgt Ion	Resp	Lower	Upper
180	1343		
182	102.1	47.3	142.0
145	51.3	15.6	46.8#

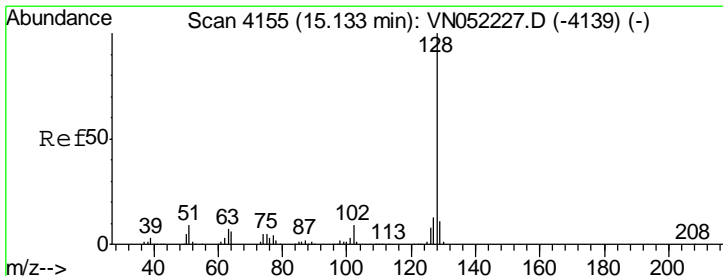
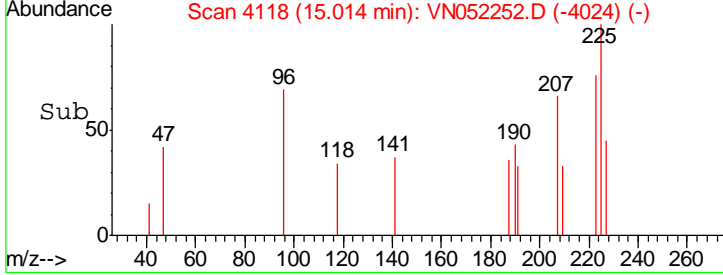
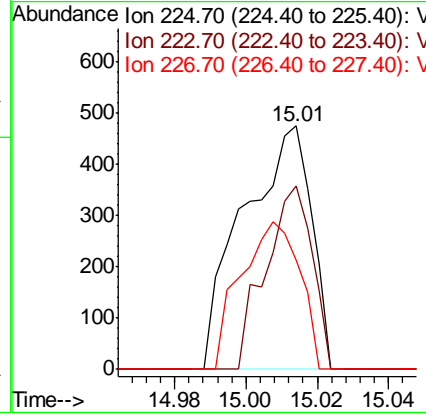
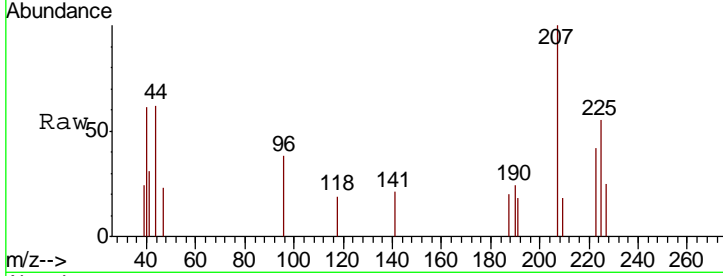




#94  
 Hexachlorobutadiene  
 Concen: 0.584 ug/l  
 RT: 15.01 min Scan# 4118  
 Delta R.T. 0.00 min  
 Lab File: VN052252.D  
 Acq: 12 Nov 2018 10:13

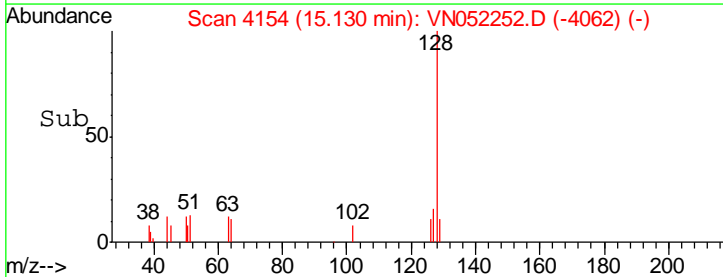
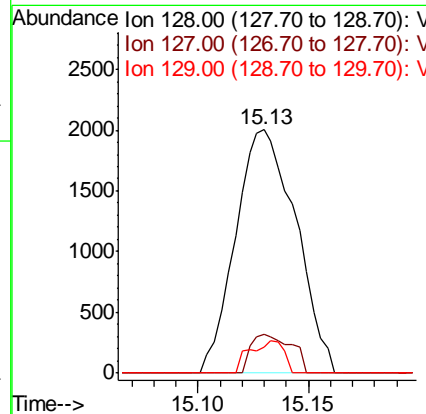
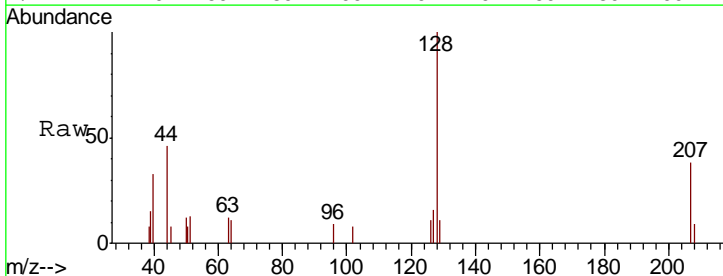
Instrument : MSVOA\_N  
 ClientSampled : VN1112WBL01

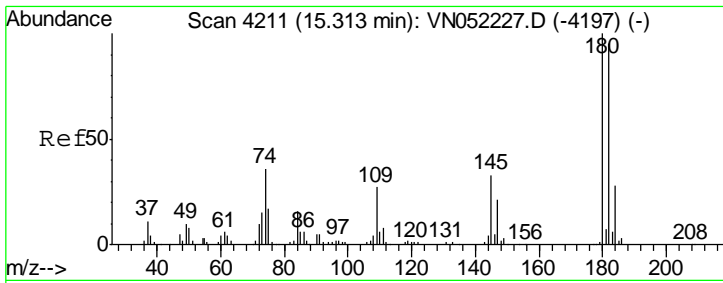
Tgt Ion	Resp	Lower	Upper
225	625		
223	51.7	32.1	96.3
227	52.6	31.8	95.4



#95  
 Naphthalene  
 Concen: 0.781 ug/l  
 RT: 15.13 min Scan# 4154  
 Delta R.T. -0.00 min  
 Lab File: VN052252.D  
 Acq: 12 Nov 2018 10:13

Tgt Ion	Resp	Lower	Upper
128	3794		
127	10.6	10.6	16.0#
129	7.5	8.7	13.1#

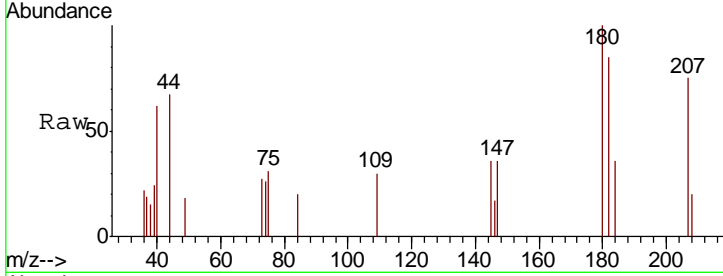




#96  
 1,2,3-Trichlorobenzene  
 Concen: 0.847 ug/l  
 RT: 15.31 min Scan# 4209  
 Delta R.T. -0.01 min  
 Lab File: VN052252.D  
 Acq: 12 Nov 2018 10:13

Instrument : MSVOA\_N  
 ClientSampleId : VN1112WBL01

Tot Ion	Resp	Lower	Upper
180	1578		
180	100		
182	107.3	47.7	143.1
145	18.6	16.8	50.3



Abundance Ion 179.80 (179.50 to 180.50): V  
 Ion 181.80 (181.50 to 182.50): V  
 Ion 144.90 (144.60 to 145.60): V

