

Data Path : Z:\VOASRV\HPCHEM1\MSVOA N\DATA\VN111218\
 Data File : VN052268.D
 Acq On : 12 Nov 2018 17:51
 Operator : MD\SY
 Sample : PB114678ZHE#12
 Misc : 5.00mL/MSVOA N/WATER
 ALS Vial : 19 Sample Multiplier: 28

Instrument :
 MSVOA_N
 ClientSampleId :
 PB114678ZHE#12

Quant Time: Nov 13 01:25:05 2018
 Quant Method : Z:\VOASRV\HPCHEM1\MSVOA_N\METHODS\82N110918W.M
 Quant Title : SW846 8260
 QLast Update : Mon Nov 12 00:34:27 2018
 Response via : Initial Calibration

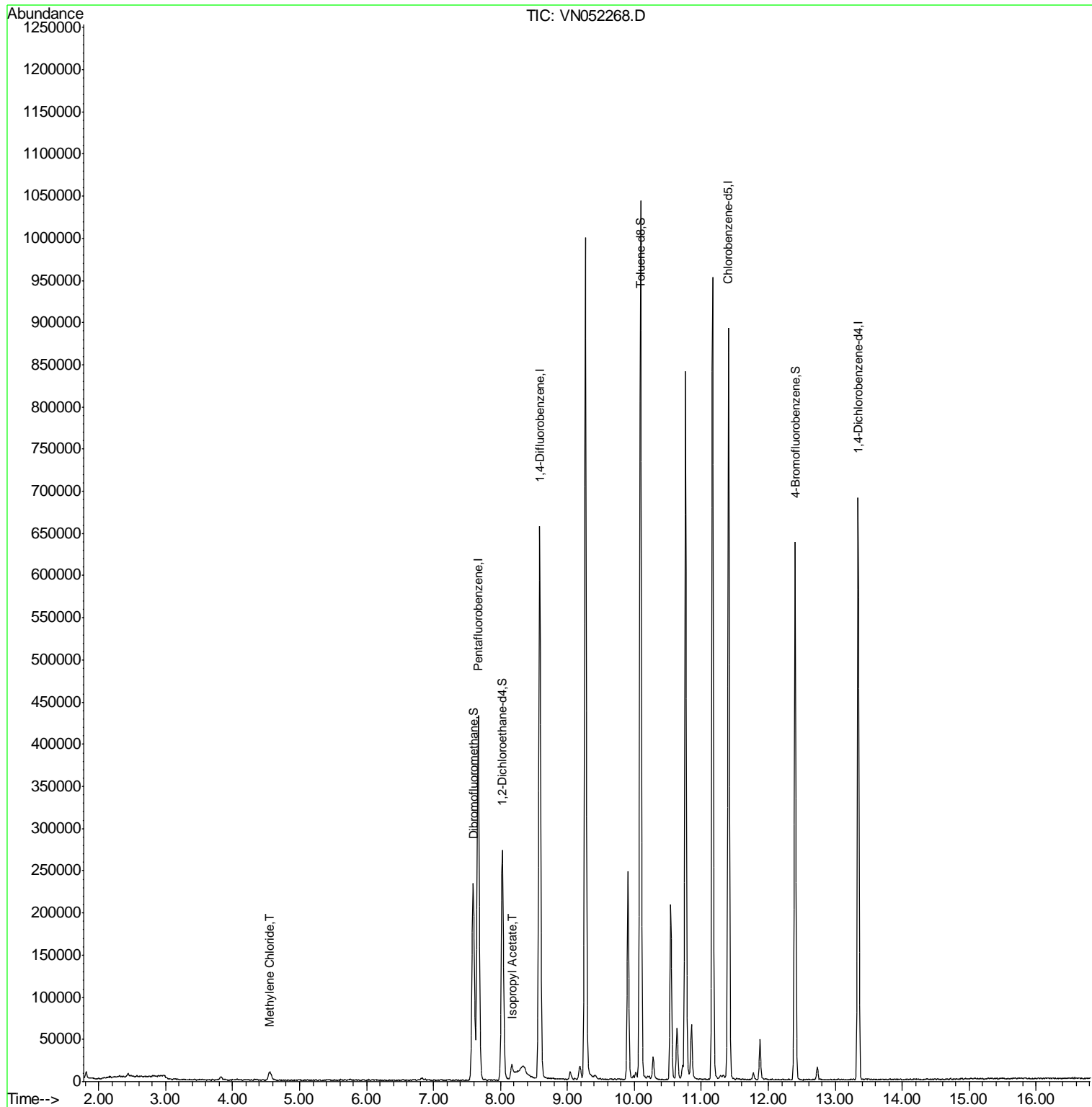
Internal Standards	R.T.	QIon	Response	Conc	Units	Dev(Min)
1) Pentafluorobenzene	7.67	168	328094	50.00	ug/l	0.00
34) 1,4-Difluorobenzene	8.59	114	558163	50.00	ug/l	0.00
63) Chlorobenzene-d5	11.41	117	476904	50.00	ug/l	0.00
72) 1,4-Dichlorobenzene-d4	13.34	152	167276	50.00	ug/l	0.00
System Monitoring Compounds						
33) 1,2-Dichloroethane-d4	8.03	65	222089	49.49	ug/l	0.00
Spiked Amount	50.000		Recovery	=	98.98%	
35) Dibromofluoromethane	7.59	113	174051	48.14	ug/l	0.00
Spiked Amount	50.000		Recovery	=	96.28%	
50) Toluene-d8	10.09	98	696518	49.22	ug/l	0.00
Spiked Amount	50.000		Recovery	=	98.44%	
62) 4-Bromofluorobenzene	12.40	95	200317	43.78	ug/l	0.00
Spiked Amount	50.000		Recovery	=	87.56%	
Target Compounds						
20) Methylene Chloride	4.56	84	6416	1.569	ug/l	90
43) Isopropyl Acetate	8.17	43	20608	2.790	ug/l #	70

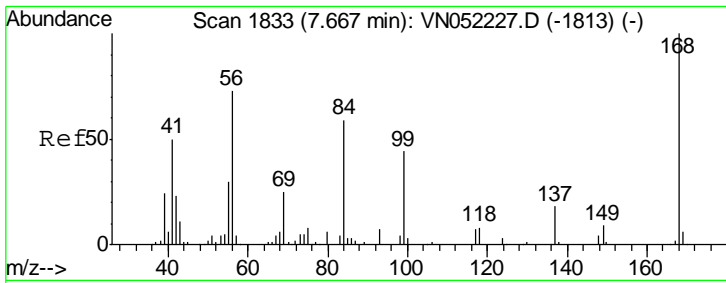
(#) = qualifier out of range (m) = manual integration (+) = signals summed

Data Path : Z:\VOASRV\HPCHEM1\MSVOA N\DATA\VN111218\
 Data File : VN052268.D
 Acq On : 12 Nov 2018 17:51
 Operator : MD\SY
 Sample : PB114678ZHE#12
 Misc : 5.00mL/MSVOA N/WATER
 ALS Vial : 19 Sample Multiplier: 28

Instrument :
 MSVOA_N
 ClientSampleId :
 PB114678ZHE#12

Quant Time: Nov 13 01:25:05 2018
 Quant Method : Z:\VOASRV\HPCHEM1\MSVOA_N\METHODS\82N110918W.M
 Quant Title : SW846 8260
 QLast Update : Mon Nov 12 00:34:27 2018
 Response via : Initial Calibration

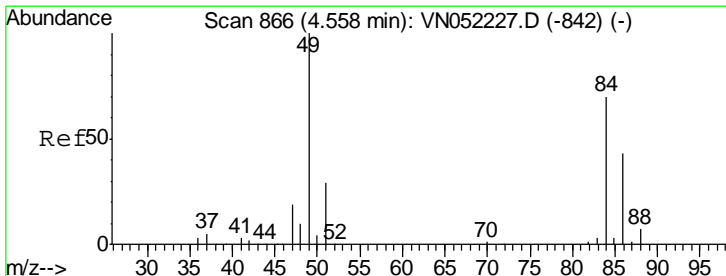
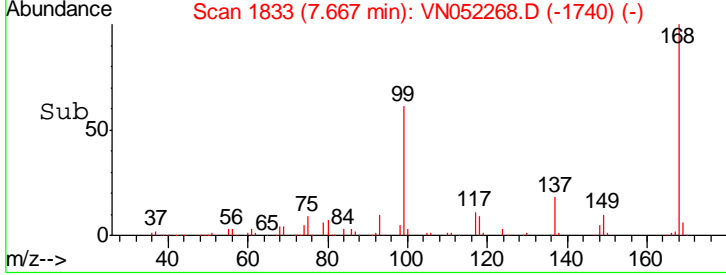
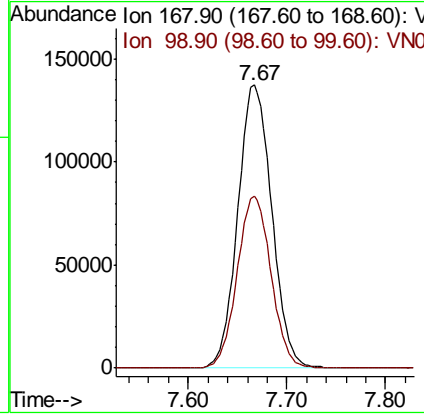
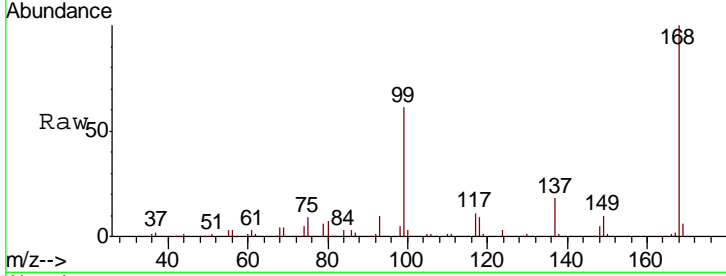




#1
 Pentafluorobenzene
 Concen: 50.000 ug/l
 RT: 7.67 min Scan# 1833
 Delta R.T. 0.00 min
 Lab File: VN052268.D
 Acq: 12 Nov 2018 17:51

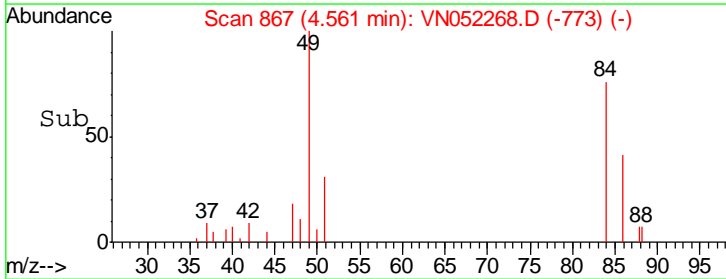
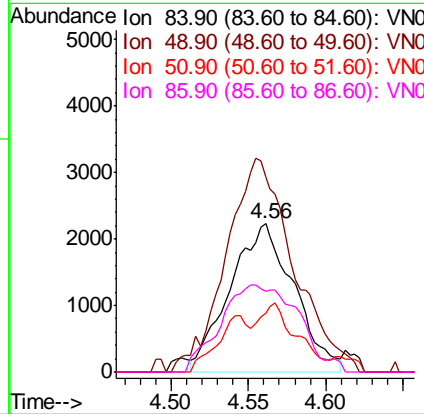
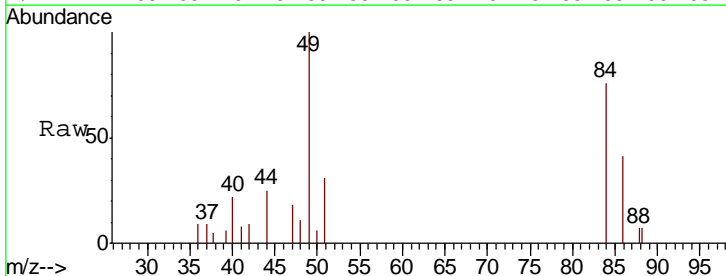
Instrument : MSVOA_N
 ClientSampleId : PB114678ZHE#12

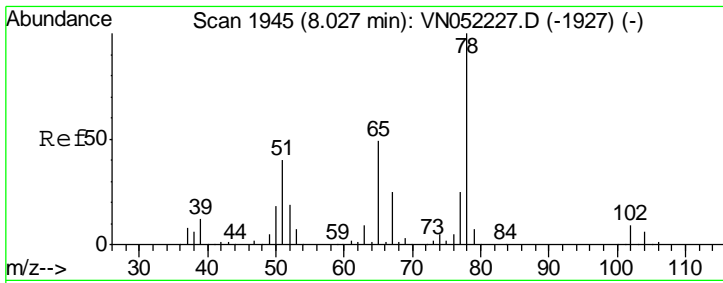
Tgt Ion	Resp	Lower	Upper
168	100		
99	61.0	44.7	67.1



#20
 Methylene Chloride
 Concen: 1.569 ug/l
 RT: 4.56 min Scan# 867
 Delta R.T. 0.00 min
 Lab File: VN052268.D
 Acq: 12 Nov 2018 17:51

Tgt Ion	Resp	Lower	Upper
84	100		
49	130.3	114.8	172.2
51	43.4	33.1	49.7
86	51.1	49.7	74.5

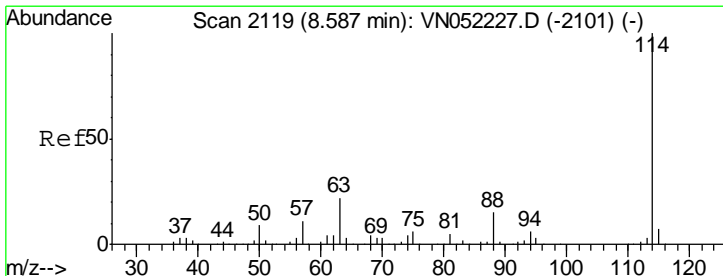
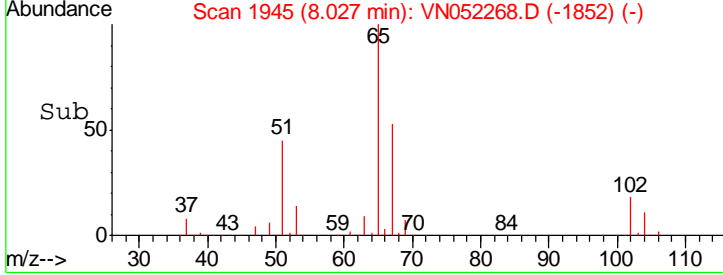
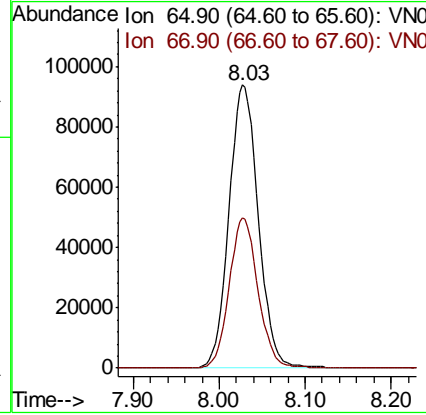
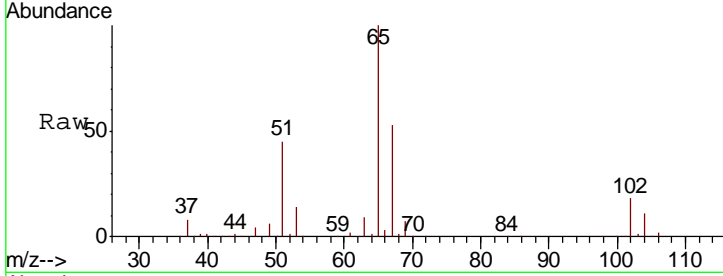




#33
 1,2-Dichloroethane-d4
 Concen: Below ug/l
 RT: 8.03 min Scan# 1945
 Delta R.T. 0.00 min
 Lab File: VN052268.D
 Acq: 12 Nov 2018 17:51

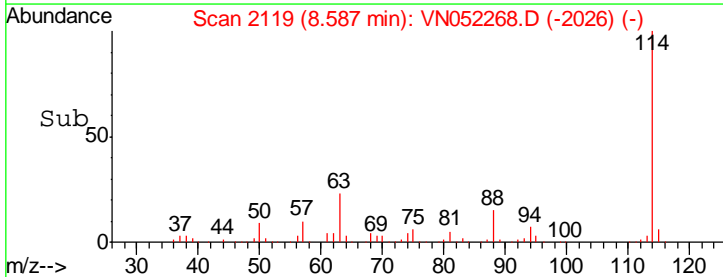
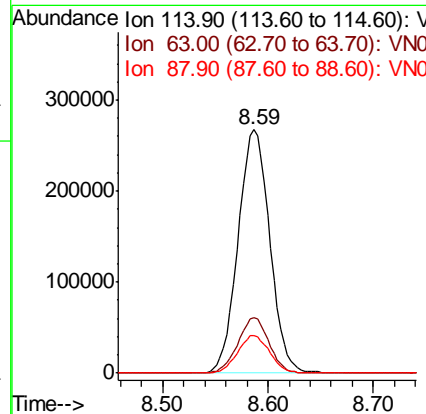
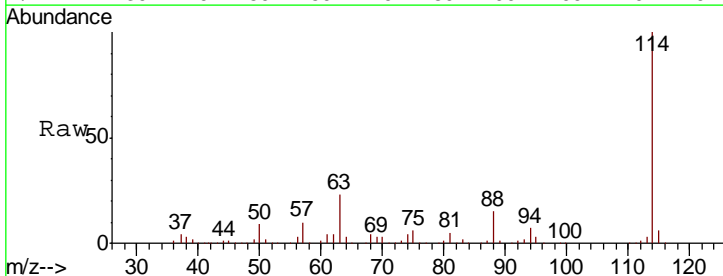
Instrument : MSVOA_N
 ClientSampled : PB114678ZHE#12

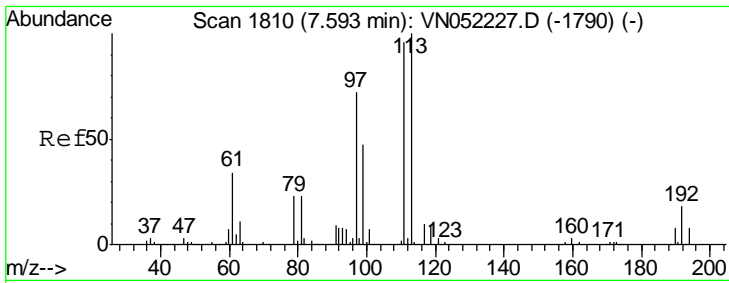
Tgt Ion	Resp	Lower	Upper
65	100		
67	52.2	0.0	106.6



#34
 1,4-Difluorobenzene
 Concen: 50.000 ug/l
 RT: 8.59 min Scan# 2119
 Delta R.T. 0.00 min
 Lab File: VN052268.D
 Acq: 12 Nov 2018 17:51

Tgt Ion	Resp	Lower	Upper
114	100		
63	22.9	0.0	43.4
88	15.4	0.0	30.2

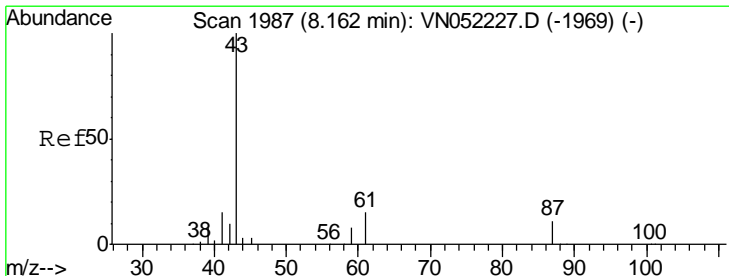
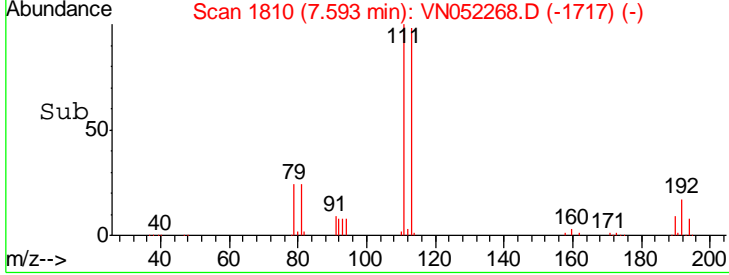
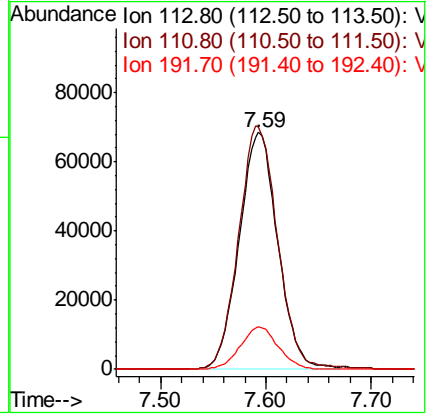
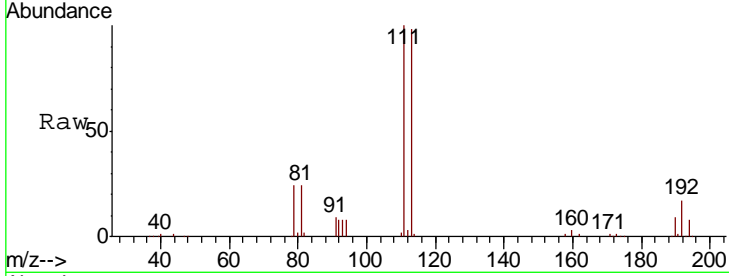




#35
 Dibromofluoromethane
 Concen: 50.000 ug/l
 RT: 7.59 min Scan# 1810
 Delta R.T. 0.00 min
 Lab File: VN052268.D
 Acq: 12 Nov 2018 17:51

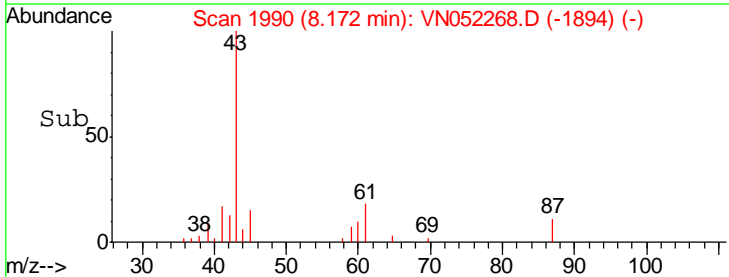
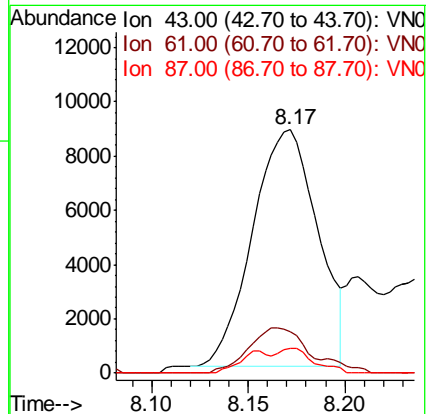
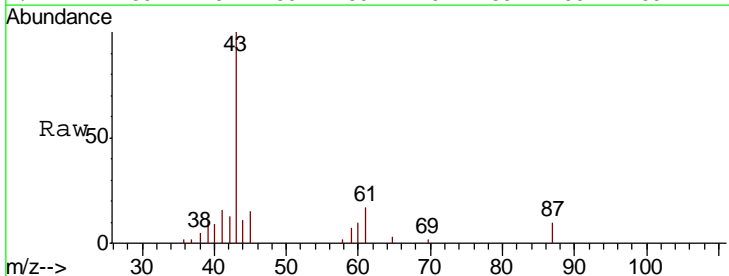
Instrument : MSVOA_N
 ClientSampled : PB114678ZHE#12

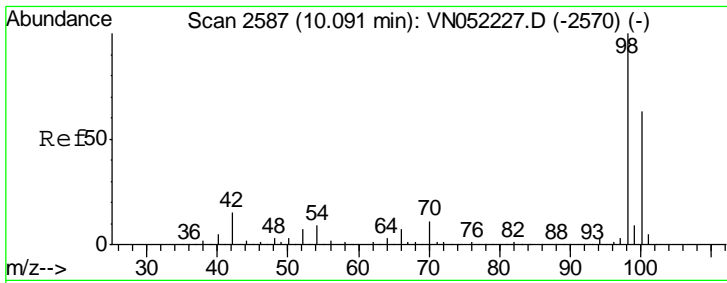
Tgt Ion	Resp	Lower	Upper
113	174051		
111	104.3	80.2	120.4
192	17.6	14.1	21.1



#43
 Isopropyl Acetate
 Concen: 2.790 ug/l
 RT: 8.17 min Scan# 1990
 Delta R.T. 0.01 min
 Lab File: VN052268.D
 Acq: 12 Nov 2018 17:51

Tgt Ion	Resp	Lower	Upper
43	20608		
61	0.0	14.2	21.4#
87	5.7	8.4	12.6#

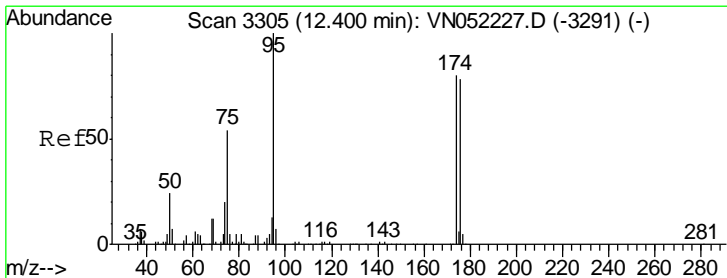
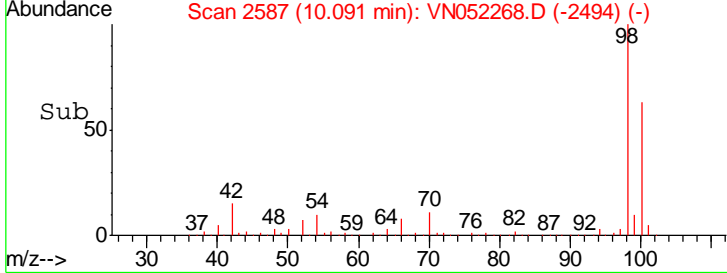
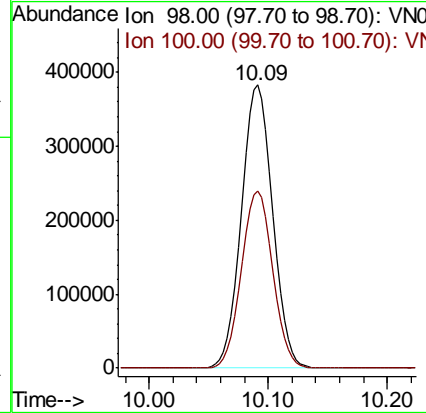
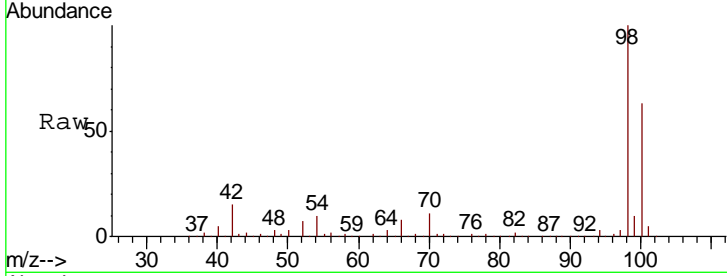




#50
 Toluene-d8
 Concen: N.D. ug/l
 RT: 10.09 min Scan# 2587
 Delta R.T. 0.00 min
 Lab File: VN052268.D
 Acq: 12 Nov 2018 17:51

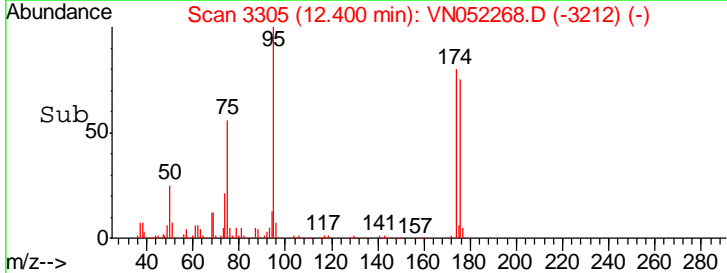
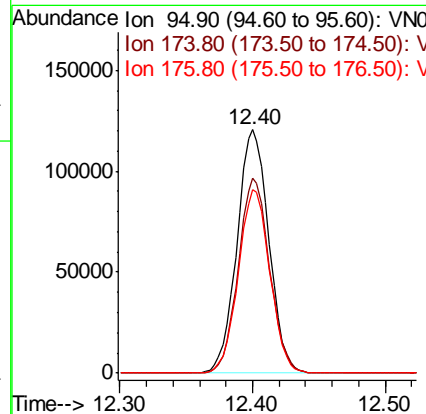
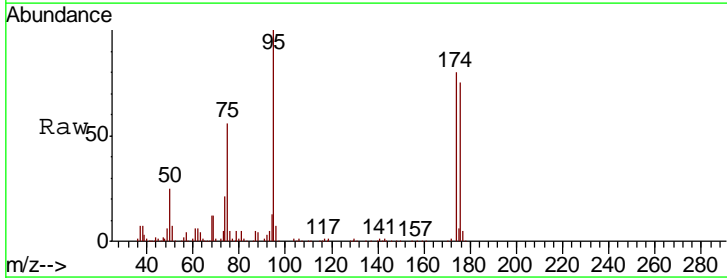
Instrument :
 MSVOA_N
 ClientSampled :
 PB114678ZHE#12

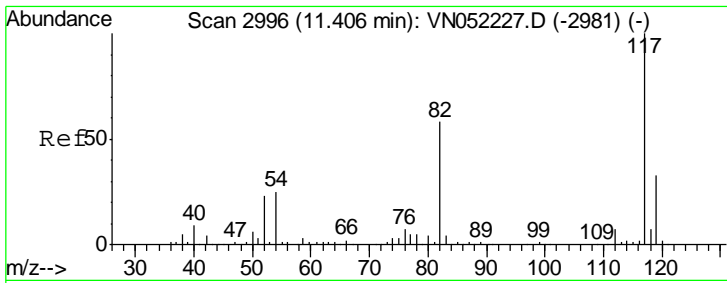
Tgt Ion: 98 Resp: 696518
 Ion Ratio Lower Upper
 98 100
 100 63.0 50.2 75.2



#62
 4-Bromofluorobenzene
 Concen: N.D. ug/l
 RT: 12.40 min Scan# 3305
 Delta R.T. 0.00 min
 Lab File: VN052268.D
 Acq: 12 Nov 2018 17:51

Tgt Ion: 95 Resp: 200317
 Ion Ratio Lower Upper
 95 100
 174 78.9 0.0 159.4
 176 74.9 0.0 157.8

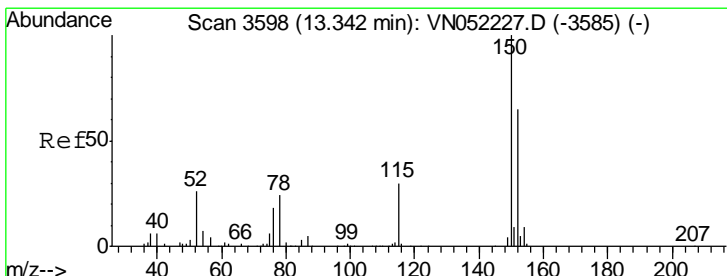
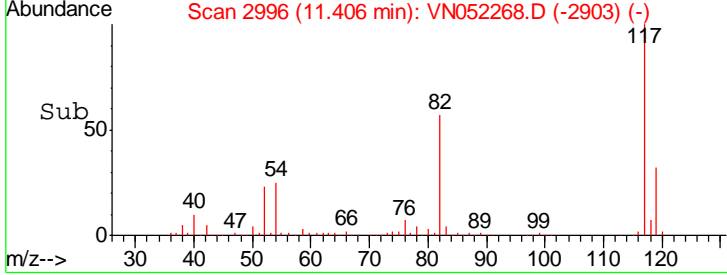
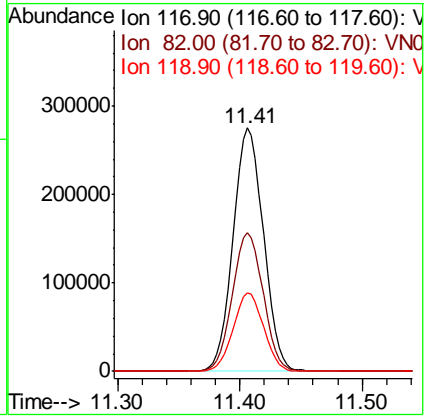
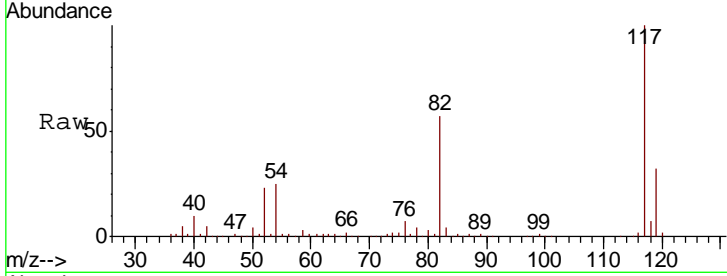




#63
 Chlorobenzene-d5
 Concen: 50.000 ug/l
 RT: 11.41 min Scan# 2996
 Delta R.T. 0.00 min
 Lab File: VN052268.D
 Acq: 12 Nov 2018 17:51

Instrument :
 MSVOA_N
 ClientSampled :
 PB114678ZHE#12

Tgt Ion	Resp	Lower	Upper
117	476904		
82	56.7	46.2	69.2
119	32.3	26.2	39.4



#72
 1,4-Dichlorobenzene-d4
 Concen: 50.000 ug/l
 RT: 13.34 min Scan# 3598
 Delta R.T. 0.00 min
 Lab File: VN052268.D
 Acq: 12 Nov 2018 17:51

Tgt Ion	Resp	Lower	Upper
152	167276		
152	100		
115	59.9	29.8	89.5
150	159.3	0.0	350.2

