

Data Path : Z:\VOASRV\HPCHEM1\MSVOA N\DATA\VN111320\  
 Data File : VN064634.D  
 Acq On : 13 Nov 2020 16:21  
 Operator : JC/MD  
 Sample : L4747-07RE  
 Misc : 5.00mL/MSVOA N/WATER  
 ALS Vial : 14 Sample Multiplier: 1

Instrument :  
 MSVOA\_N  
 ClientSampleId :  
 BP-VPB178-GW-638-640RE

Quant Time: Nov 17 01:58:08 2020  
 Quant Method : Z:\VOASRV\HPCHEM1\MSVOA\_N\METHODS\82N110420W.M  
 Quant Title : SW846 8260  
 QLast Update : Wed Nov 04 12:09:03 2020  
 Response via : Initial Calibration

Internal Standards	R.T.	QIon	Response	Conc	Units	Dev(Min)
1) Pentafluorobenzene	7.63	168	219328	50.00	ug/l	0.00
34) 1,4-Difluorobenzene	8.55	114	456480	50.00	ug/l	0.00
63) Chlorobenzene-d5	11.38	117	478860	50.00	ug/l	0.00
72) 1,4-Dichlorobenzene-d4	13.32	152	173228	50.00	ug/l	0.00

## System Monitoring Compounds

33) 1,2-Dichloroethane-d4	7.99	65	228172	59.73	ug/l	0.00
Spiked Amount	50.000		Recovery	=	119.46%	
35) Dibromofluoromethane	7.55	113	166364	53.53	ug/l	0.00
Spiked Amount	50.000		Recovery	=	107.06%	
50) Toluene-d8	10.06	98	595832	49.60	ug/l	0.00
Spiked Amount	50.000		Recovery	=	99.20%	
62) 4-Bromofluorobenzene	12.38	95	219950	48.42	ug/l	0.00
Spiked Amount	50.000		Recovery	=	96.84%	

## Target Compounds

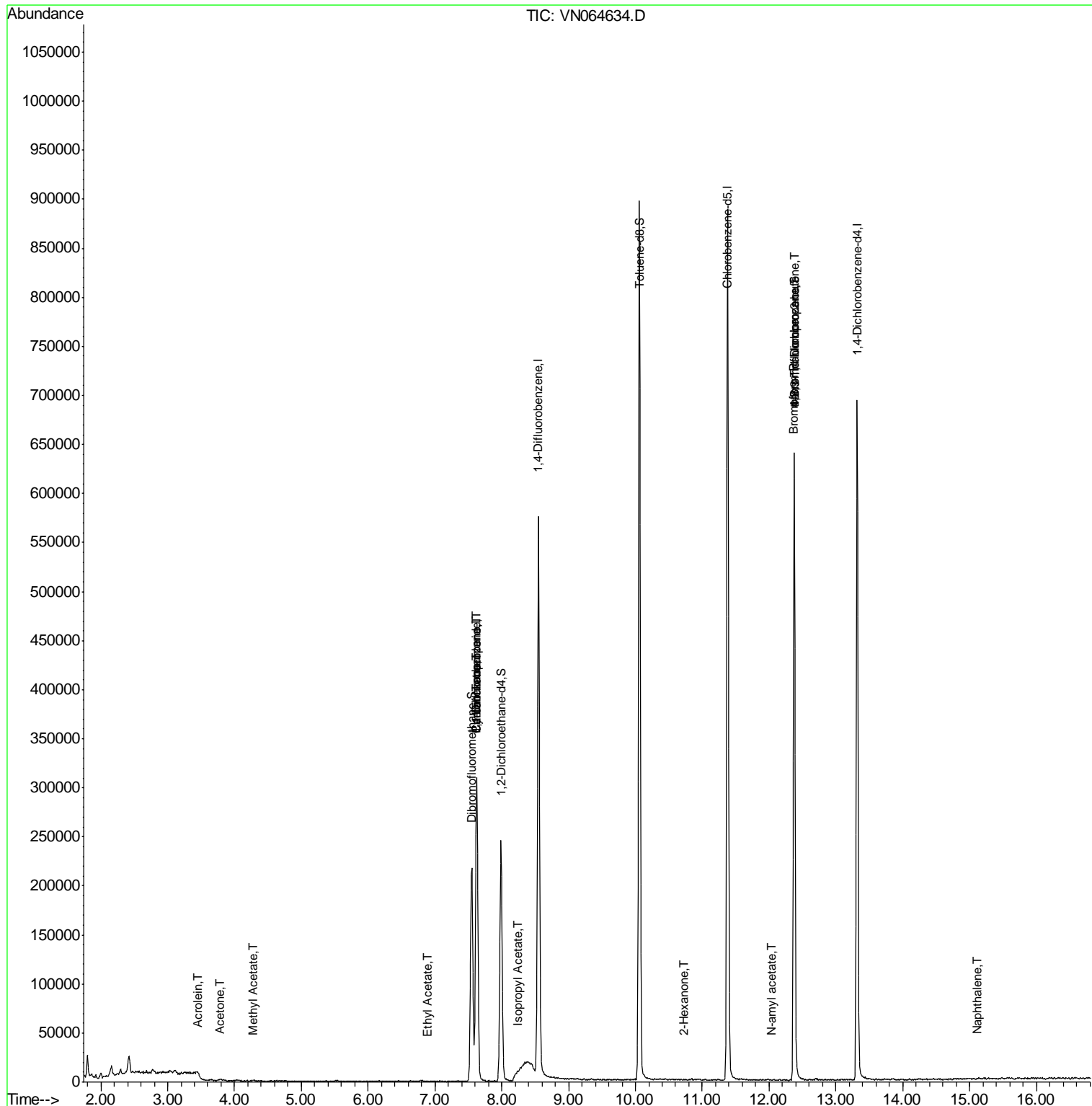
						Qvalue
13) Acrolein	3.46	56	111	0.425	ug/l #	15
16) Acetone	3.78	43	2653	1.823	ug/l #	78
18) Methyl Acetate	4.28	43	624	0.218	ug/l #	55
31) Cyclohexane	7.62	56	7454	1.605	ug/l #	10
36) 1,1-Dichloropropene	7.62	75	20701	4.293	ug/l #	52
37) Ethyl Acetate	6.87	43	30	0.768	ug/l #	71
38) Carbon Tetrachloride	7.63	117	25743	4.995	ug/l #	16
43) Isopropyl Acetate	8.23	43	9551	1.222	ug/l #	64
59) 2-Hexanone	10.72	43	327	4.115	ug/l #	28
71) Bromoform	12.36	173	315	1.380	ug/l #	29
74) N-amyl acetate	12.04	43	221	1.247	ug/l #	46
76) 1,2,3-Trichloropropane	12.38	75	124026	29.550	ug/l #	100
81) trans-1,4-Dichloro-2-buten	12.38	75	124026	82.507	ug/l #	8
95) Naphthalene	15.11	128	208	3.643	ug/l #	69

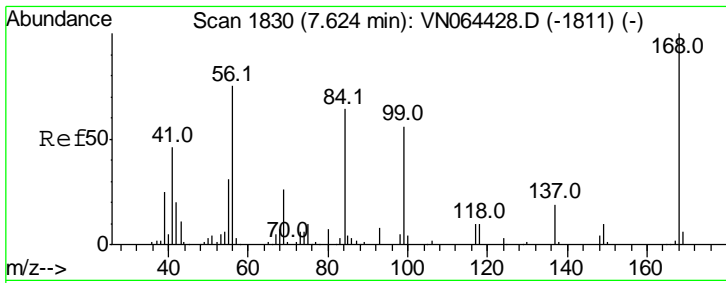
(#) = qualifier out of range (m) = manual integration (+) = signals summed

Data Path : Z:\VOASRV\HPCHEM1\MSVOA N\DATA\VN111320\  
 Data File : VN064634.D  
 Acq On : 13 Nov 2020 16:21  
 Operator : JC/MD  
 Sample : L4747-07RE  
 Misc : 5.00mL/MSVOA N/WATER  
 ALS Vial : 14 Sample Multiplier: 1

Instrument :  
 MSVOA\_N  
 Client Sample ID :  
 BP-VPB178-GW-638-640RE

Quant Time: Nov 17 01:58:08 2020  
 Quant Method : Z:\VOASRV\HPCHEM1\MSVOA\_N\METHODS\82N110420W.M  
 Quant Title : SW846 8260  
 QLast Update : Wed Nov 04 12:09:03 2020  
 Response via : Initial Calibration

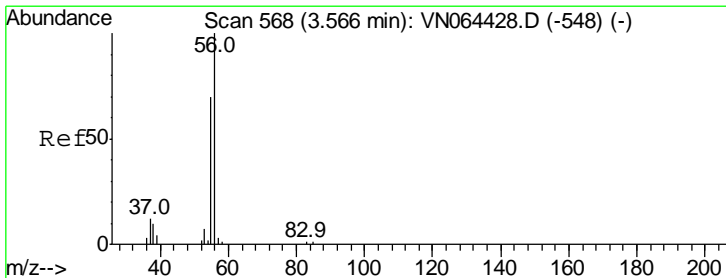
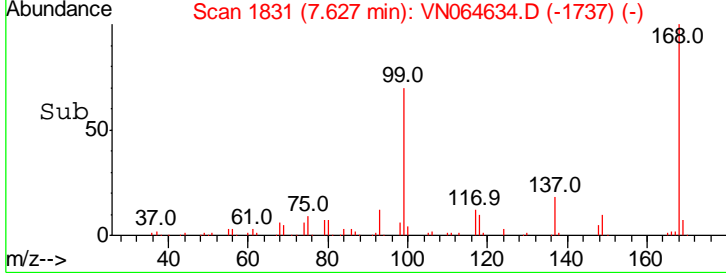
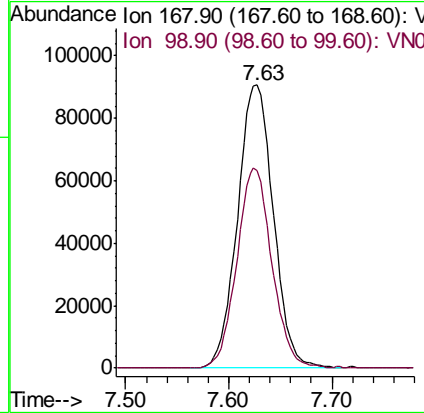
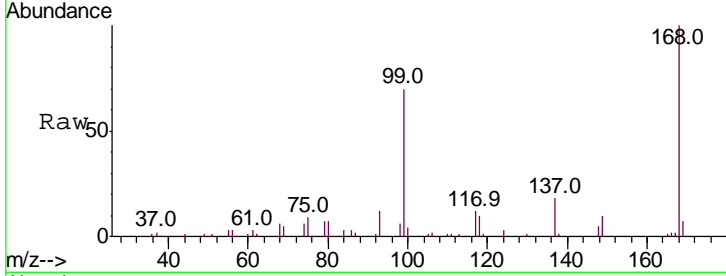




#1  
 Pentafluorobenzene  
 Concen: 50.000 ug/l  
 RT: 7.63 min Scan# 1831  
 Delta R.T. 0.00 min  
 Lab File: VN064634.D  
 Acq: 13 Nov 2020 16:21

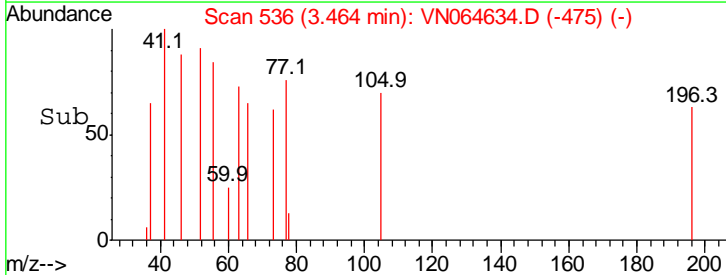
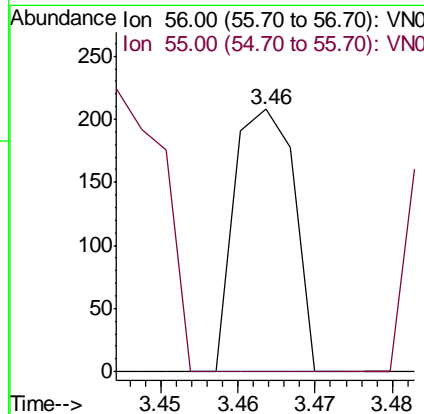
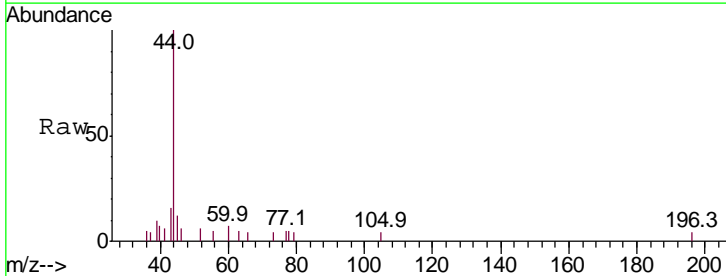
**Instrument :**  
 MSVOA\_N  
**ClientSampled :**  
 BP-VPB178-GW-638-640RE

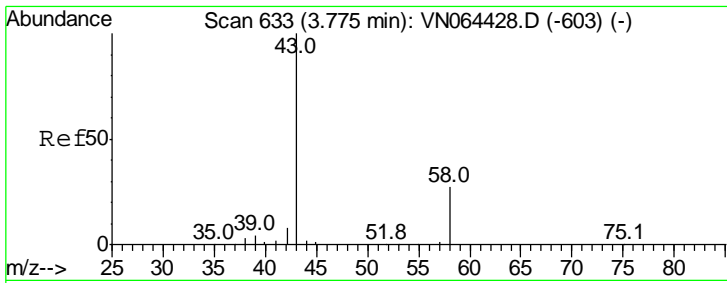
Tgt Ion: 168 Resp: 219328  
 Ion Ratio Lower Upper  
 168 100  
 99 69.9 53.4 80.2



#13  
 Acrolein  
 Concen: 0.425 ug/l  
 RT: 3.46 min Scan# 536  
 Delta R.T. -0.10 min  
 Lab File: VN064634.D  
 Acq: 13 Nov 2020 16:21

Tgt Ion: 56 Resp: 111  
 Ion Ratio Lower Upper  
 56 100  
 55 0.0 55.9 83.9#

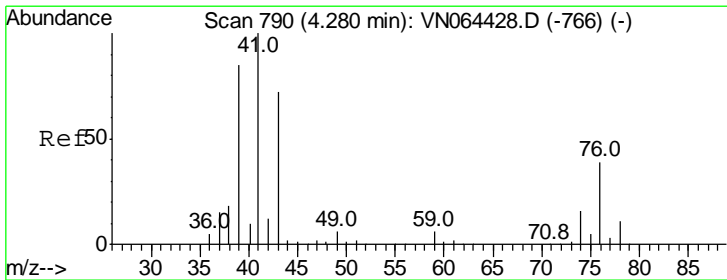
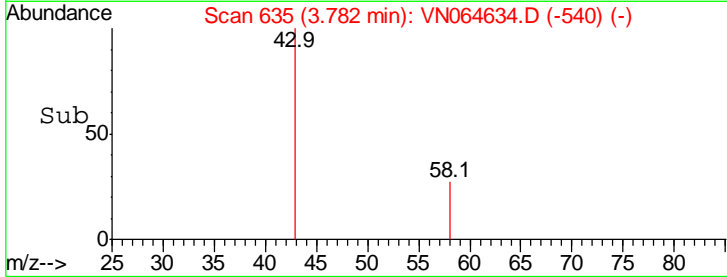
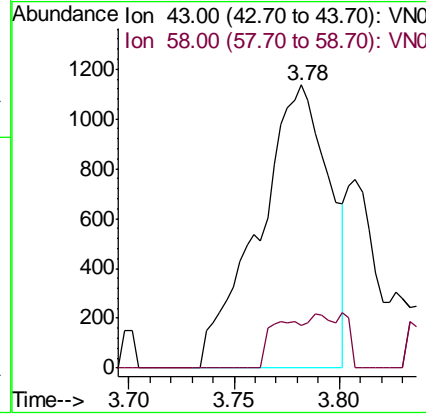
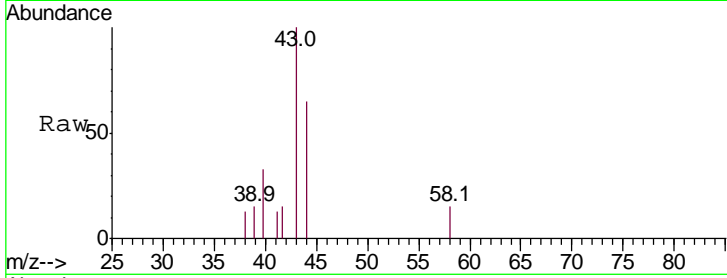




#16  
 Acetone  
 Concen: 1.823 ug/l  
 RT: 3.78 min Scan# 635  
 Delta R.T. 0.01 min  
 Lab File: VN064634.D  
 Acq: 13 Nov 2020 16:21

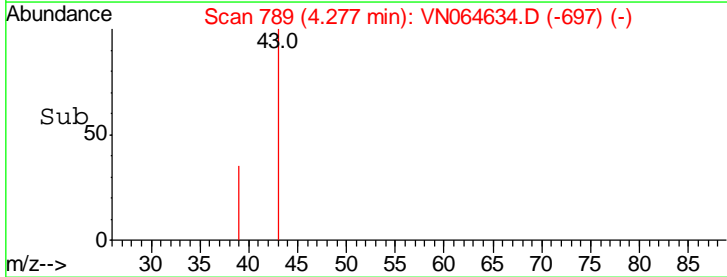
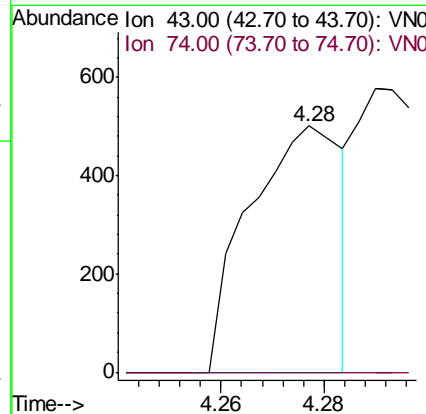
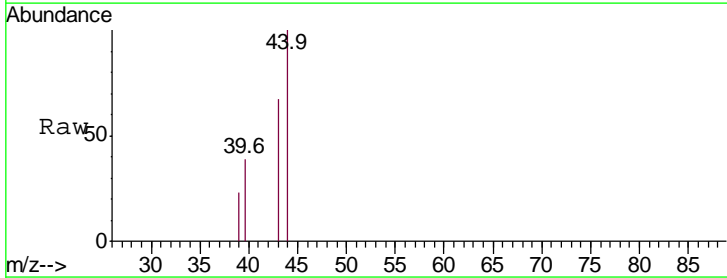
**Instrument :**  
 MSVOA\_N  
**ClientSampled :**  
 BP-VPB178-GW-638-640RE

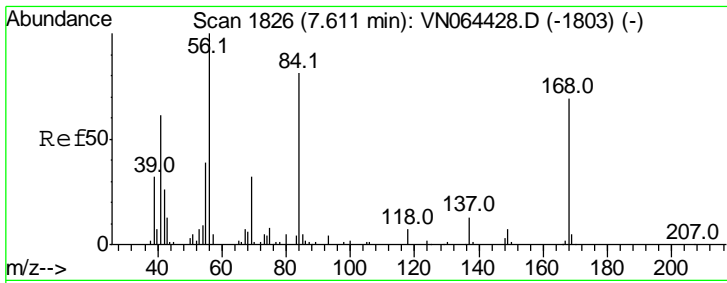
Tgt Ion: 43 Resp: 2653  
 Ion Ratio Lower Upper  
 43 100  
 58 15.1 21.4 32.0#



#18  
 Methyl Acetate  
 Concen: 0.218 ug/l  
 RT: 4.28 min Scan# 789  
 Delta R.T. -0.00 min  
 Lab File: VN064634.D  
 Acq: 13 Nov 2020 16:21

Tgt Ion: 43 Resp: 624  
 Ion Ratio Lower Upper  
 43 100  
 74 0.0 17.0 25.4#

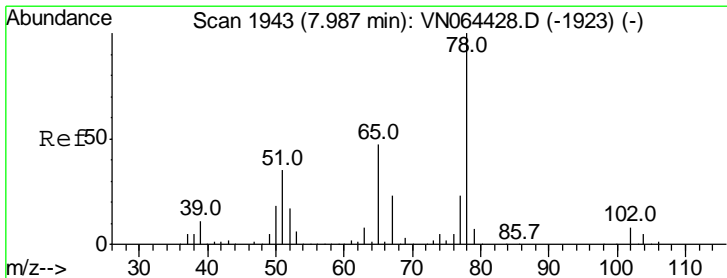
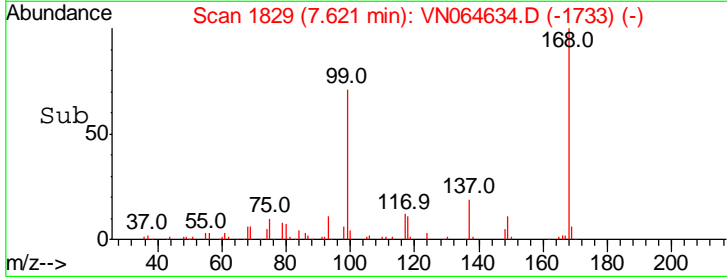
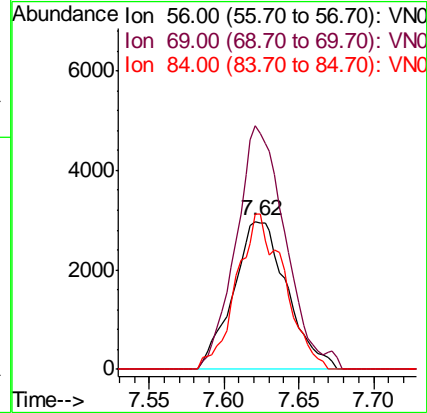
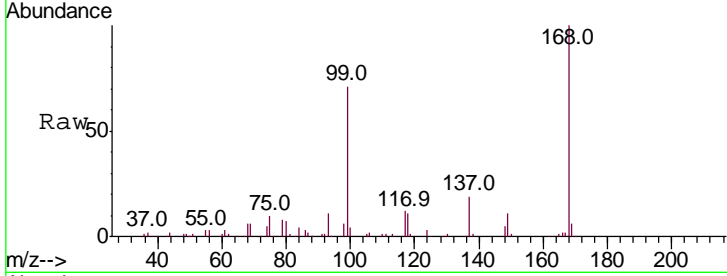




#31  
 Cyclohexane  
 Concen: 1.605 ug/l  
 RT: 7.62 min Scan# 1829  
 Delta R.T. 0.01 min  
 Lab File: VN064634.D  
 Acq: 13 Nov 2020 16:21

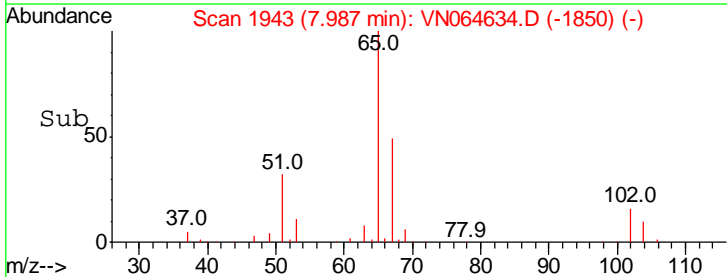
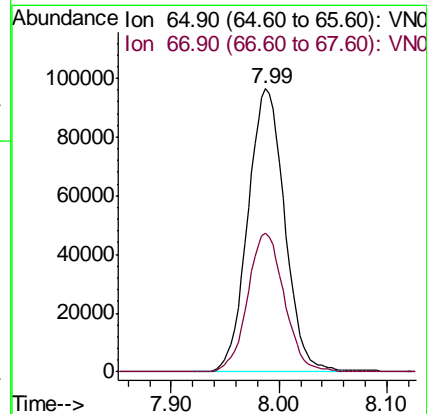
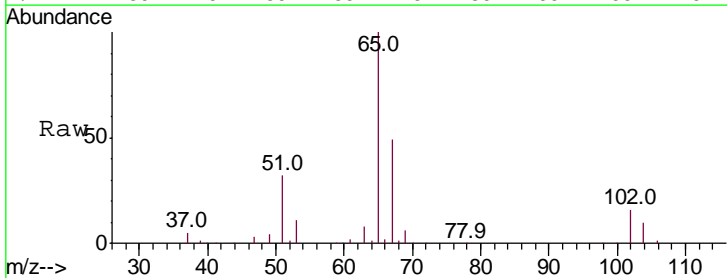
Instrument :  
 MSVOA\_N  
 ClientSampled :  
 BP-VPB178-GW-638-640RE

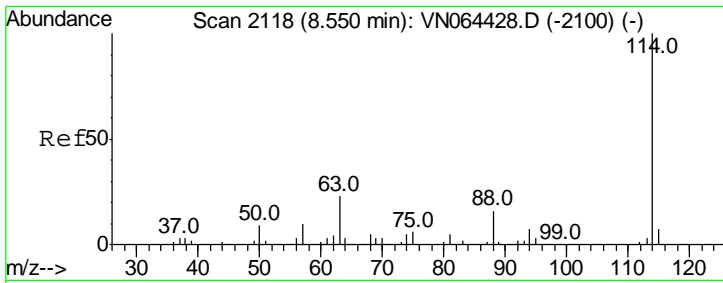
Tgt Ion	Resp	Lower	Upper
56	100		
69	164.2	25.6	38.4#
84	104.7	63.0	94.6#



#33  
 1,2-Dichloroethane-d4  
 Concen: 59.725 ug/l  
 RT: 7.99 min Scan# 1943  
 Delta R.T. 0.00 min  
 Lab File: VN064634.D  
 Acq: 13 Nov 2020 16:21

Tgt Ion	Resp	Lower	Upper
65	100		
67	48.8	0.0	101.6

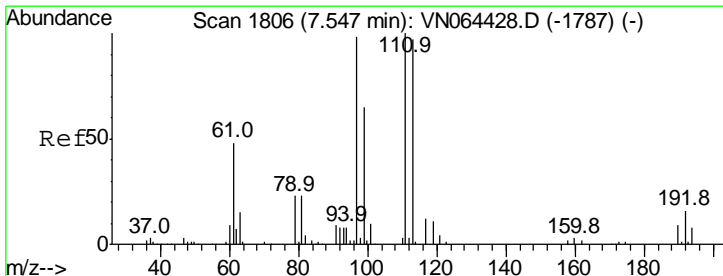
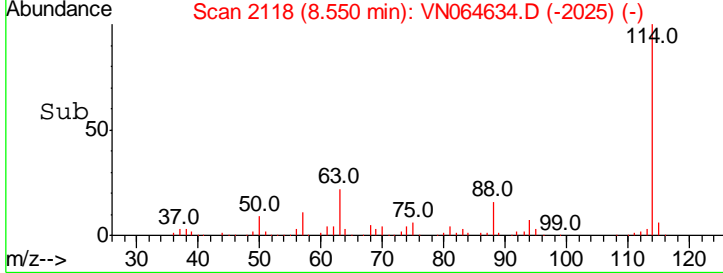
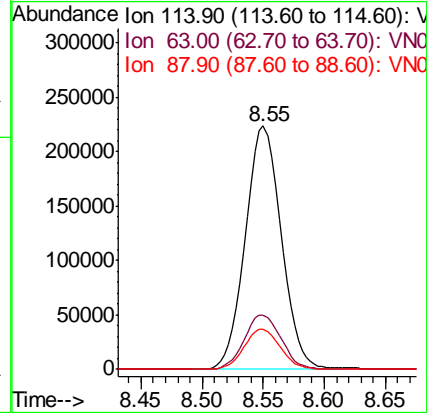
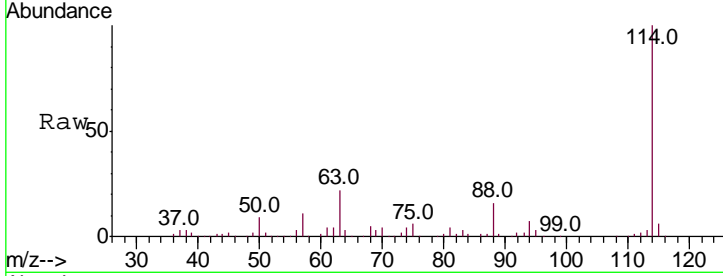




#34  
 1,4-Difluorobenzene  
 Concen: 50.000 ug/l  
 RT: 8.55 min Scan# 2118  
 Delta R.T. 0.00 min  
 Lab File: VN064634.D  
 Acq: 13 Nov 2020 16:21

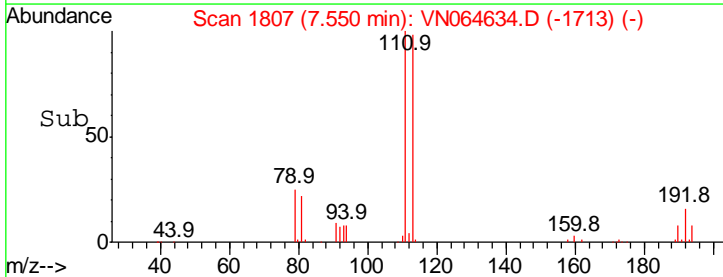
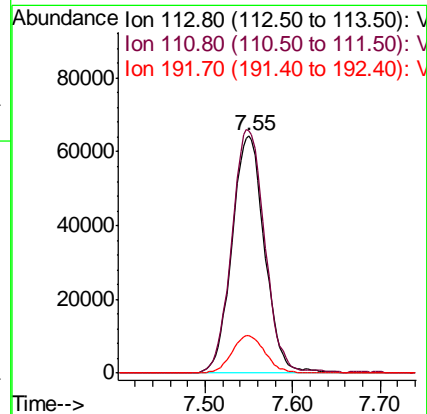
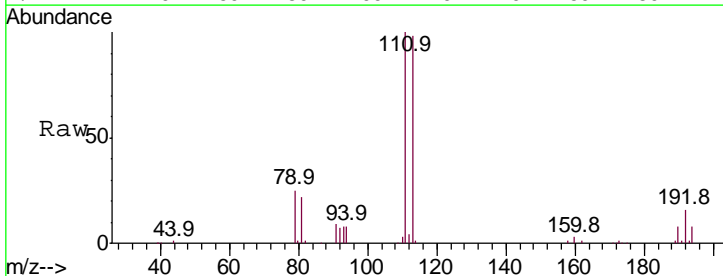
Instrument :  
 MSVOA\_N  
 ClientSampleId :  
 BP-VPB178-GW-638-640RE

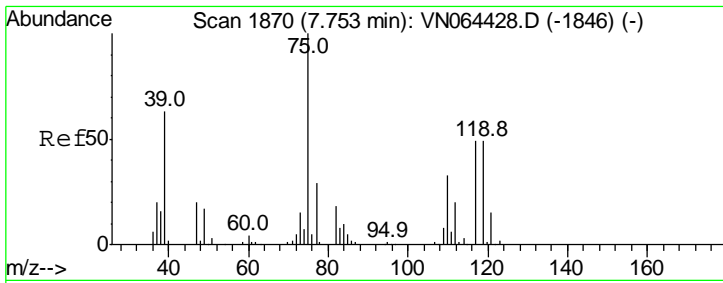
Tgt Ion	Resp	Lower	Upper
114	100		
63	22.4	0.0	45.6
88	16.4	0.0	32.8



#35  
 Dibromofluoromethane  
 Concen: 53.528 ug/l  
 RT: 7.55 min Scan# 1807  
 Delta R.T. 0.00 min  
 Lab File: VN064634.D  
 Acq: 13 Nov 2020 16:21

Tgt Ion	Resp	Lower	Upper
113	100		
111	103.6	81.1	121.7
192	16.1	12.8	19.2

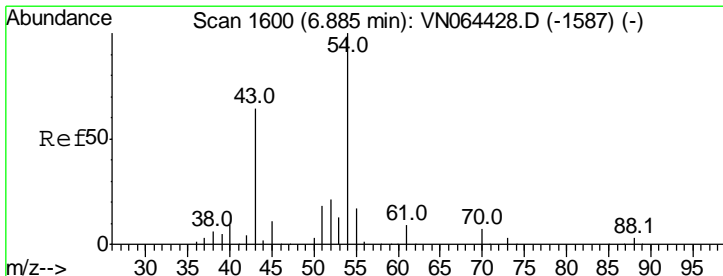
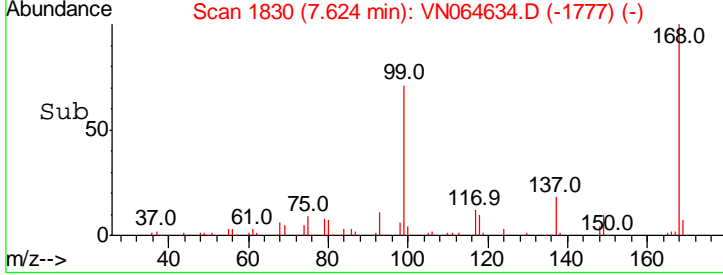
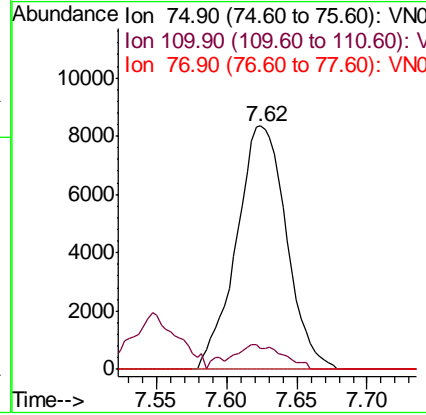
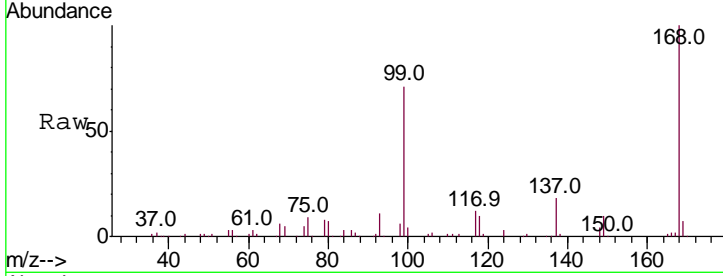




#36  
 1,1-Dichloropropene  
 Concen: 4.293 ug/l  
 RT: 7.62 min Scan# 1830  
 Delta R.T. -0.13 min  
 Lab File: VN064634.D  
 Acq: 13 Nov 2020 16:21

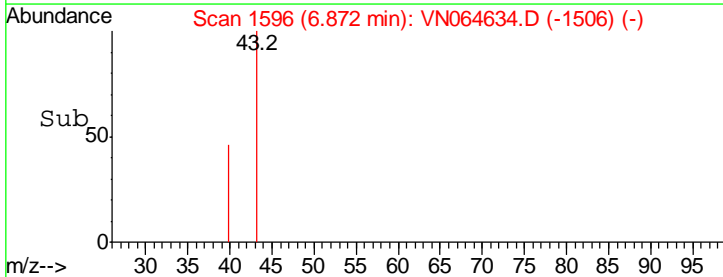
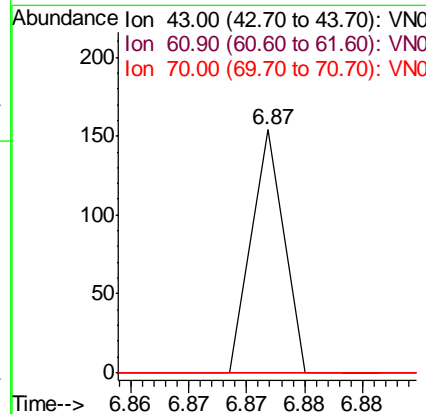
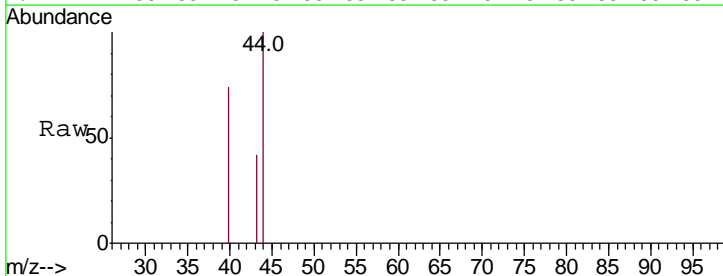
Instrument :  
 MSVOA\_N  
 ClientSampled :  
 BP-VPB178-GW-638-640RE

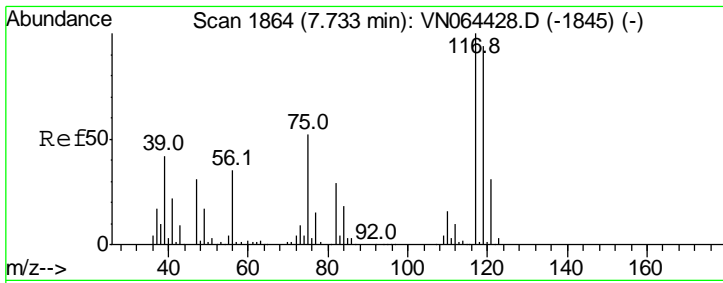
Tgt Ion	Resp	Lower	Upper
75	100		
110	9.2	16.0	48.0#
77	0.0	24.0	36.0#



#37  
 Ethyl Acetate  
 Concen: 0.768 ug/l  
 RT: 6.87 min Scan# 1596  
 Delta R.T. -0.01 min  
 Lab File: VN064634.D  
 Acq: 13 Nov 2020 16:21

Tgt Ion	Resp	Lower	Upper
43	100		
61	0.0	10.0	15.0#
70	0.0	7.1	10.7#

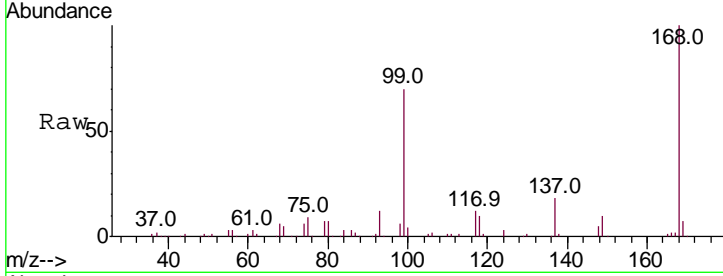




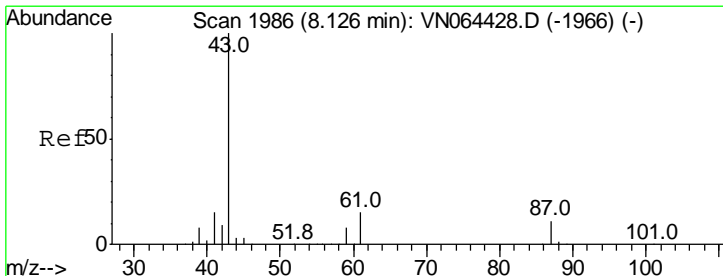
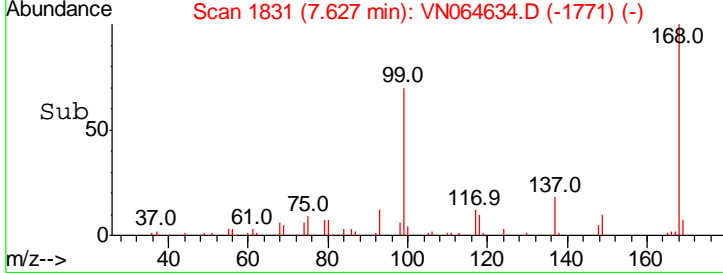
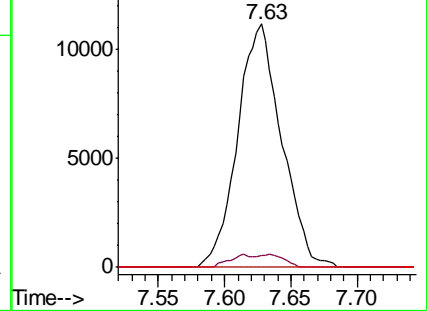
#38  
 Carbon Tetrachloride  
 Concen: 4.995 ug/l  
 RT: 7.63 min Scan# 1831  
 Delta R.T. -0.11 min  
 Lab File: VN064634.D  
 Acq: 13 Nov 2020 16:21

Instrument :  
 MSVOA\_N  
 ClientSampled :  
 BP-VPB178-GW-638-640RE

Tgt Ion	Resp	Lower	Upper
117	100		
119	4.8	75.5	113.3#
121	0.0	24.4	36.6#

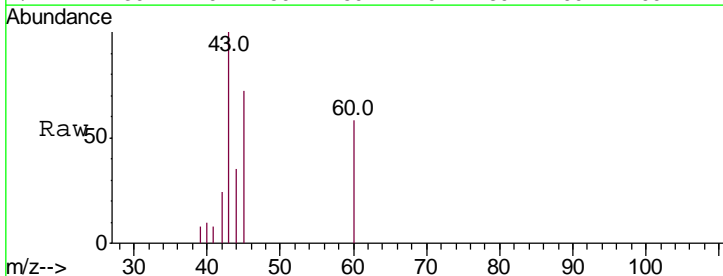


Abundance Ion 116.80 (116.50 to 117.50): V  
 Ion 118.80 (118.50 to 119.50): V  
 Ion 120.80 (120.50 to 121.50): V

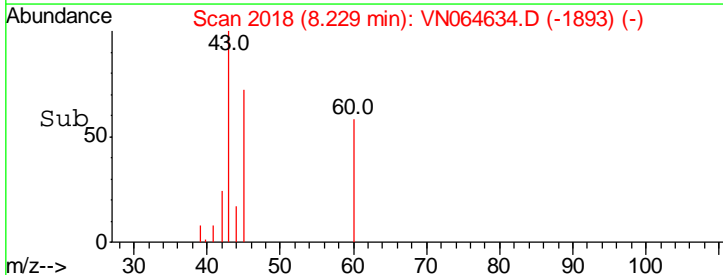
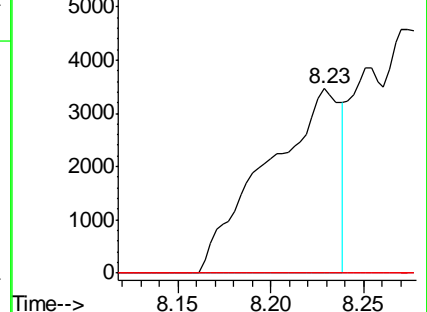


#43  
 Isopropyl Acetate  
 Concen: 1.222 ug/l  
 RT: 8.23 min Scan# 2018  
 Delta R.T. 0.10 min  
 Lab File: VN064634.D  
 Acq: 13 Nov 2020 16:21

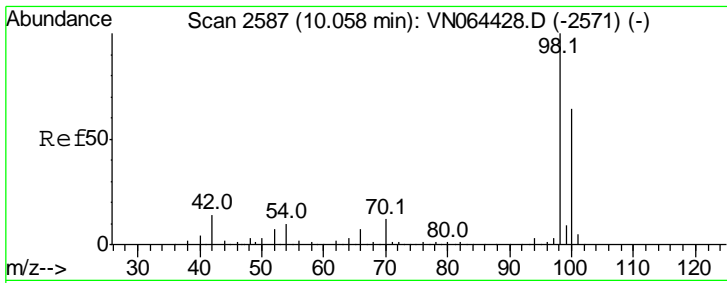
Tgt Ion	Resp	Lower	Upper
43	100		
61	0.0	14.0	21.0#
87	0.0	9.1	13.7#



Abundance Ion 43.00 (42.70 to 43.70): V  
 Ion 61.00 (60.70 to 61.70): V  
 Ion 87.00 (86.70 to 87.70): V



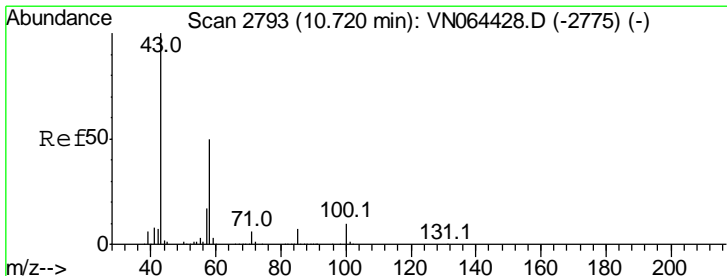
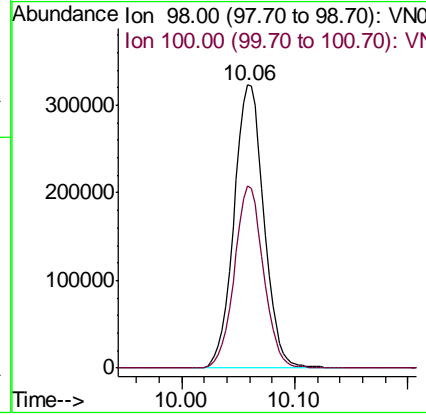
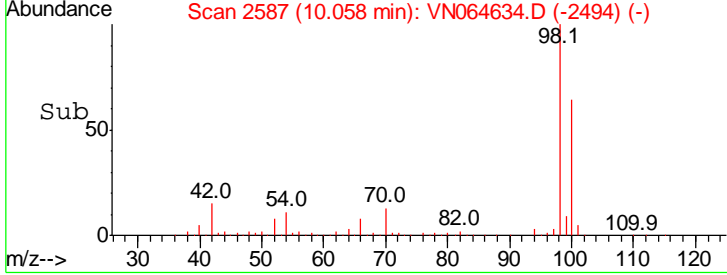
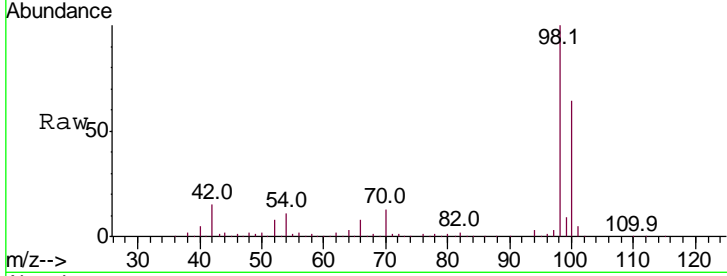




#50  
 Toluene-d8  
 Concen: 49.601 ug/l  
 RT: 10.06 min Scan# 2587  
 Delta R.T. 0.00 min  
 Lab File: VN064634.D  
 Acq: 13 Nov 2020 16:21

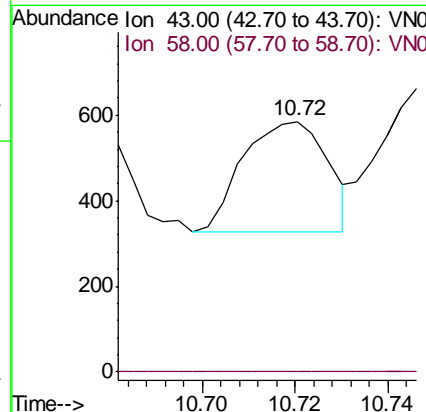
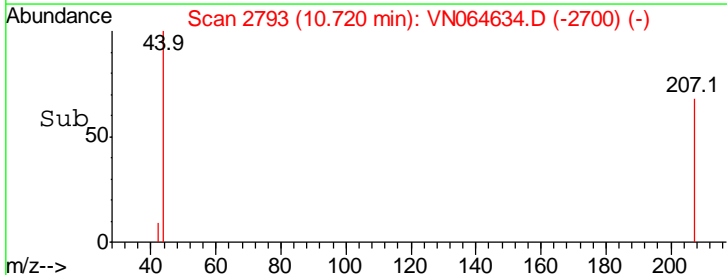
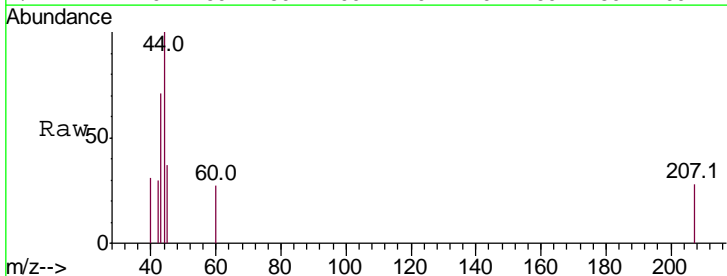
Instrument : MSVOA\_N  
 ClientSampled : BP-VPB178-GW-638-640RE

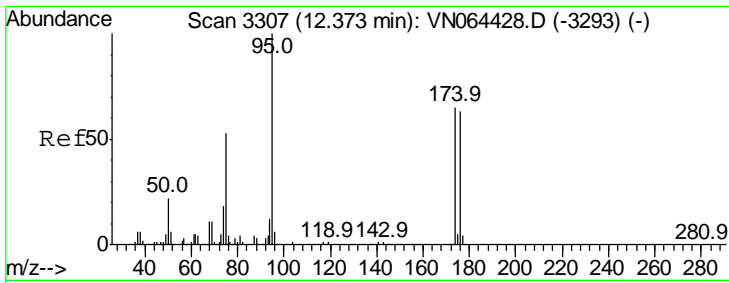
Tgt Ion	Resp	Lower	Upper
98	100		
100	62.8	50.7	76.1



#59  
 2-Hexanone  
 Concen: 4.115 ug/l  
 RT: 10.72 min Scan# 2793  
 Delta R.T. 0.00 min  
 Lab File: VN064634.D  
 Acq: 13 Nov 2020 16:21

Tgt Ion	Resp	Lower	Upper
43	100		
58	0.0	24.7	74.1#

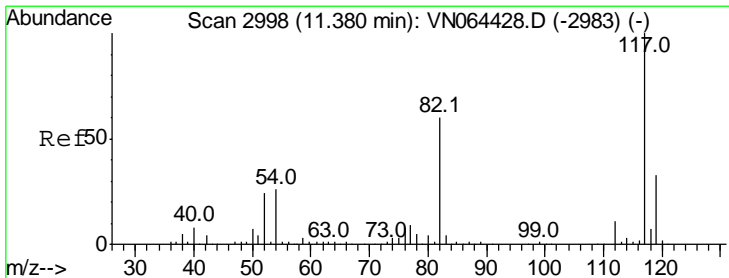
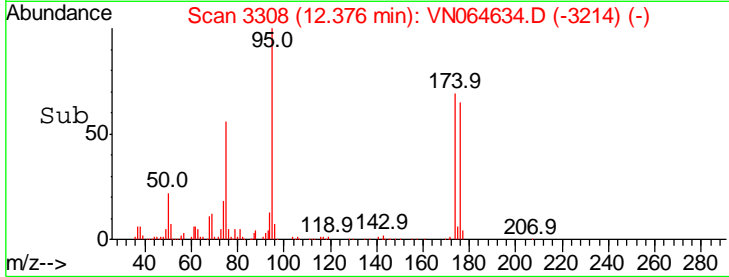
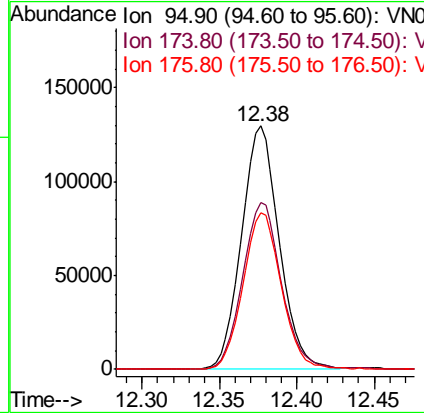
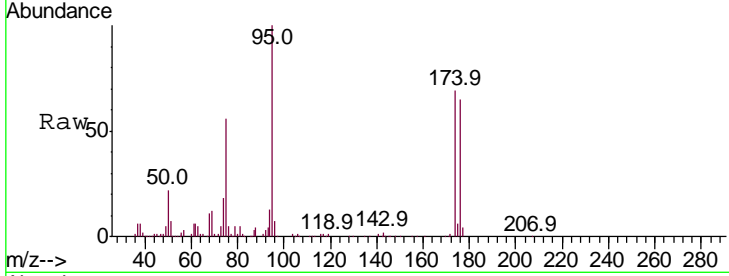




#62  
 4-Bromofluorobenzene  
 Concen: 48.416 ug/l  
 RT: 12.38 min Scan# 3308  
 Delta R.T. 0.00 min  
 Lab File: VN064634.D  
 Acq: 13 Nov 2020 16:21

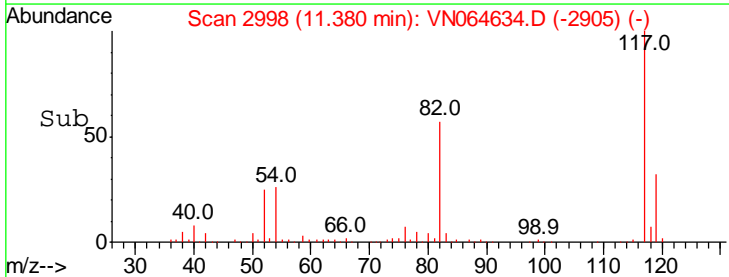
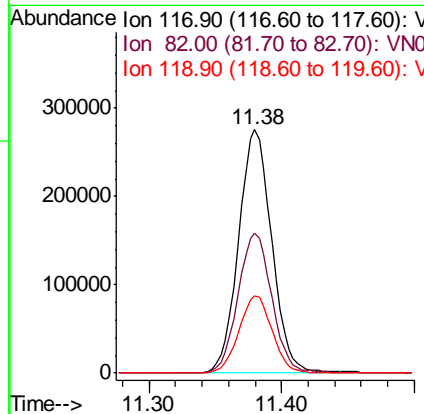
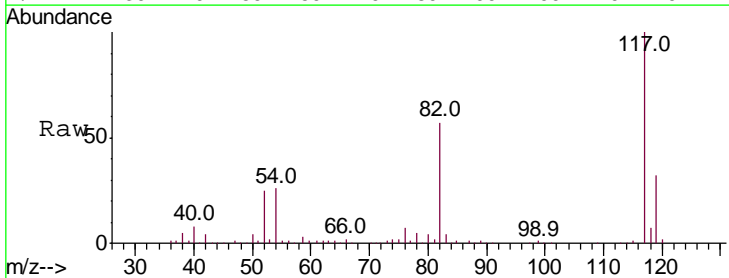
Instrument : MSVOA\_N  
 ClientSampled : BP-VPB178-GW-638-640RE

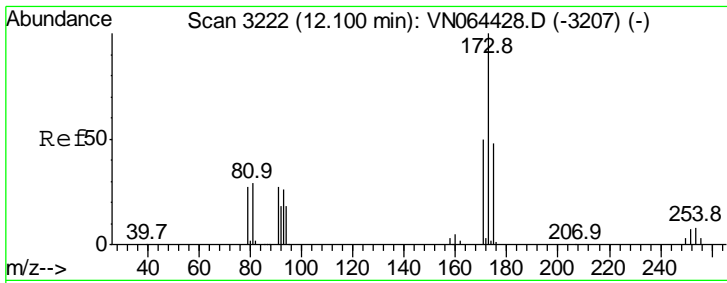
Tgt Ion	Resp	Lower	Upper
95	219950		
174	70.6	0.0	132.6
176	65.2	0.0	129.2



#63  
 Chlorobenzene-d5  
 Concen: 50.000 ug/l  
 RT: 11.38 min Scan# 2998  
 Delta R.T. 0.00 min  
 Lab File: VN064634.D  
 Acq: 13 Nov 2020 16:21

Tgt Ion	Resp	Lower	Upper
117	478860		
82	57.5	48.1	72.1
119	31.9	26.2	39.4

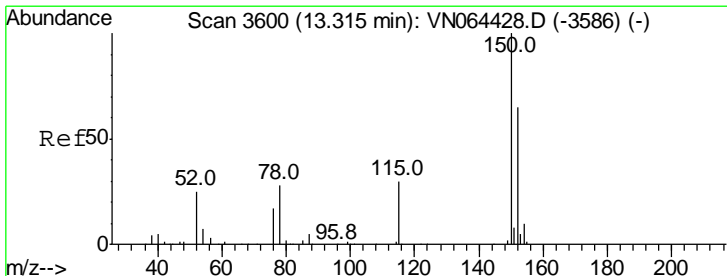
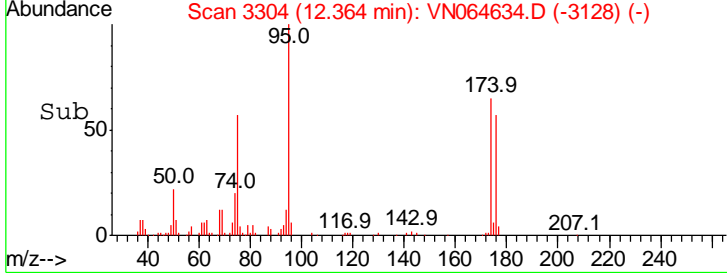
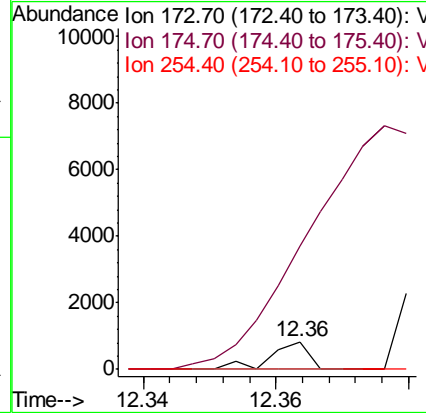
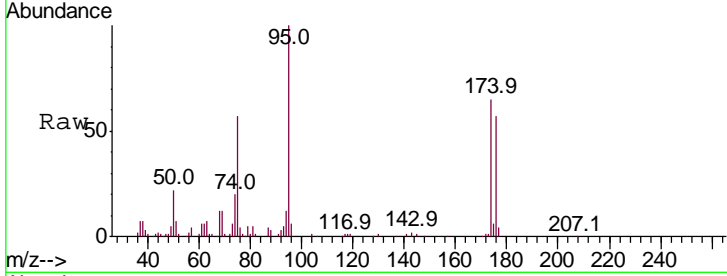




#71  
 Bromoform  
 Concen: 1.380 ug/l  
 RT: 12.36 min Scan# 3304  
 Delta R.T. 0.26 min  
 Lab File: VN064634.D  
 Acq: 13 Nov 2020 16:21

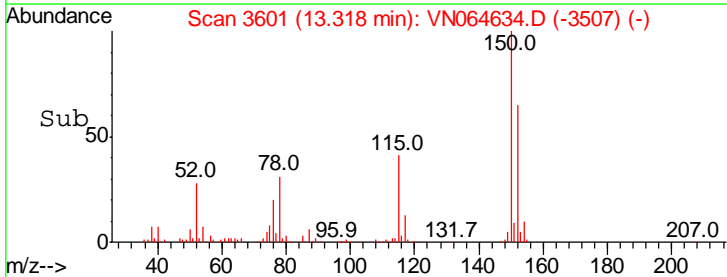
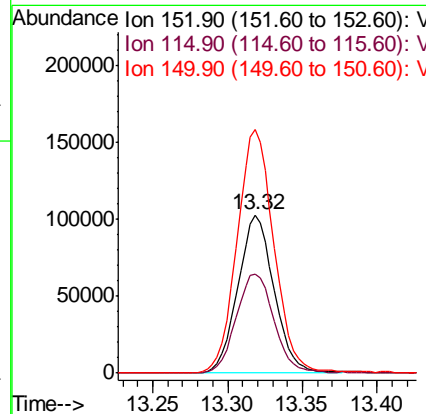
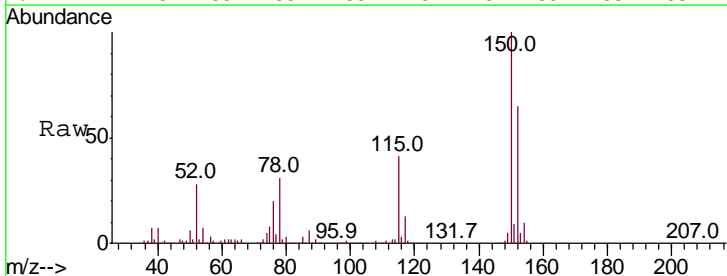
**Instrument :**  
 MSVOA\_N  
**ClientSampleId :**  
 BP-VPB178-GW-638-640RE

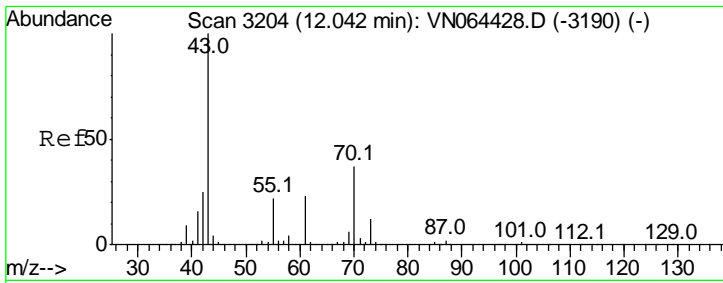
Tgt Ion	Resp	Lower	Upper
173	100		
175	0.0	23.7	71.1#
254	0.0	0.0	0.0



#72  
 1,4-Dichlorobenzene-d4  
 Concen: 50.000 ug/l  
 RT: 13.32 min Scan# 3601  
 Delta R.T. 0.00 min  
 Lab File: VN064634.D  
 Acq: 13 Nov 2020 16:21

Tgt Ion	Resp	Lower	Upper
152	100		
115	65.4	32.0	96.0
150	157.3	0.0	353.8

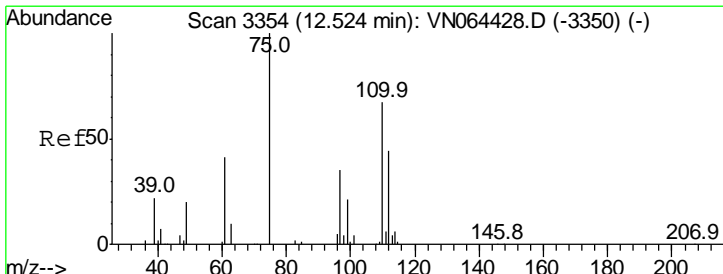
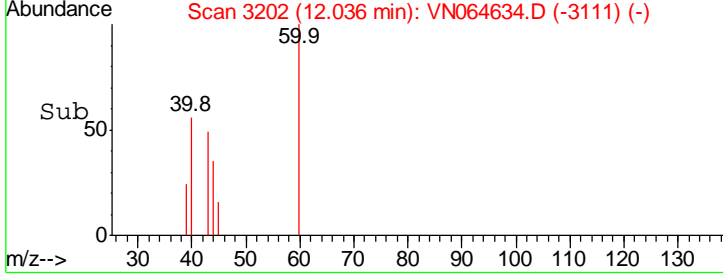
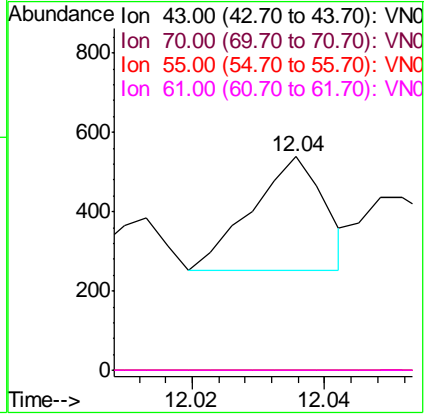
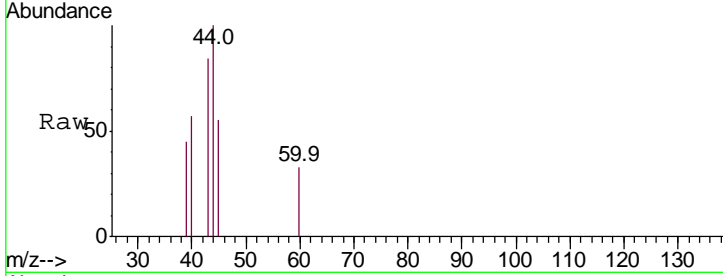




#74  
 N-amyl acetate  
 Concen: 1.247 ug/l  
 RT: 12.04 min Scan# 3202  
 Delta R.T. -0.01 min  
 Lab File: VN064634.D  
 Acq: 13 Nov 2020 16:21

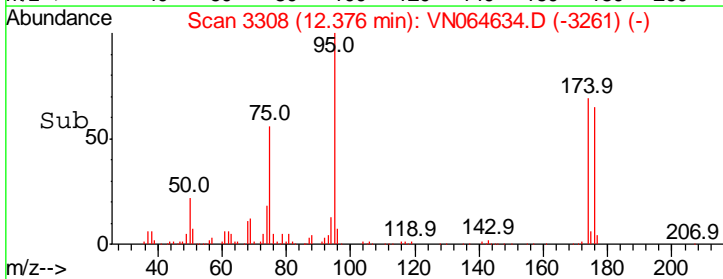
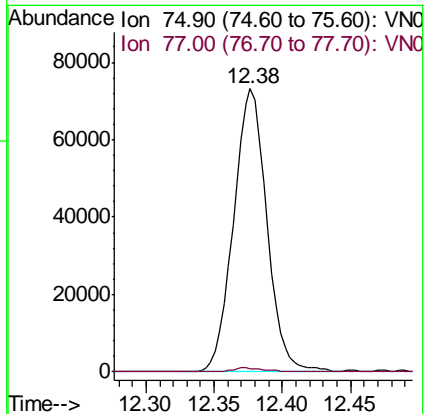
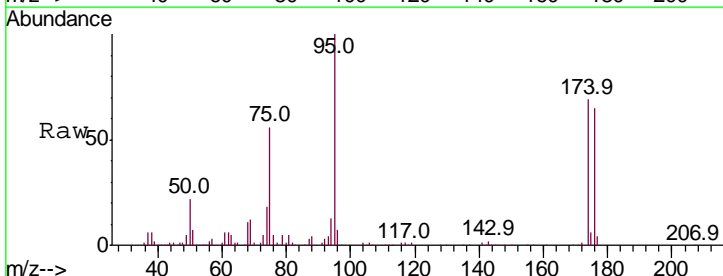
Instrument : MSVOA\_N  
 ClientSampled : BP-VPB178-GW-638-640RE

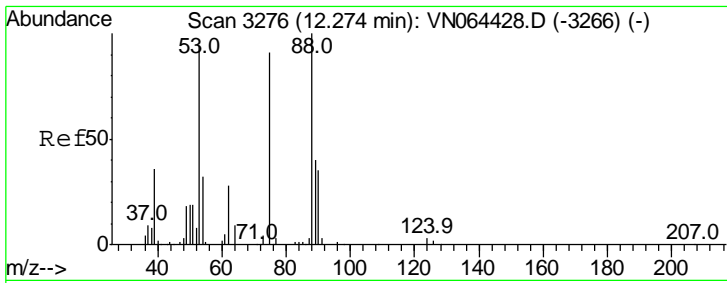
Tgt Ion	Ratio	Lower	Upper
43	100		
70	0.0	29.6	44.4#
55	0.0	18.4	27.6#
61	0.0	17.8	26.6#



#76  
 1,2,3-Trichloropropane  
 Concen: 29.550 ug/l  
 RT: 12.38 min Scan# 3308  
 Delta R.T. -0.15 min  
 Lab File: VN064634.D  
 Acq: 13 Nov 2020 16:21

Tgt Ion	Ratio	Lower	Upper
75	100		
77	1.2	0.0	0.0#

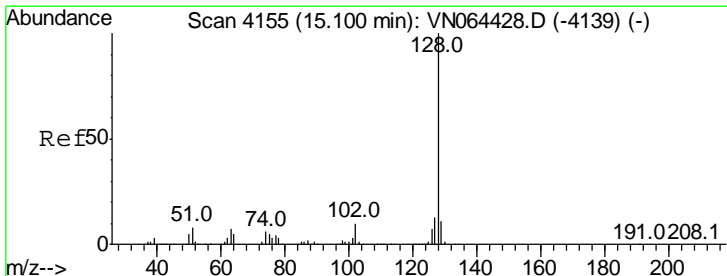
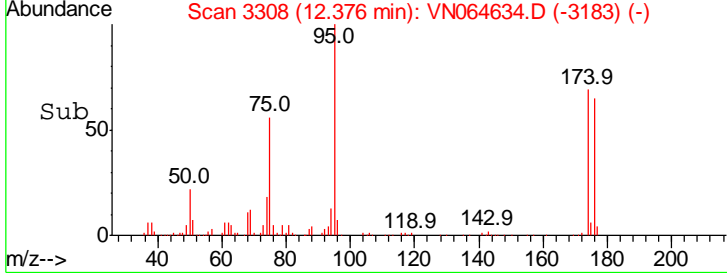
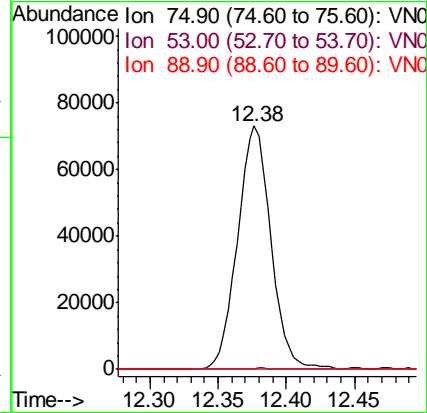
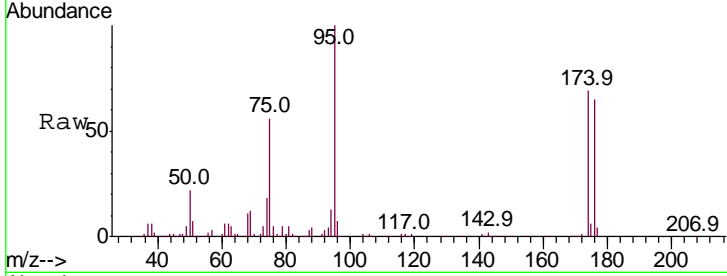




#81  
 trans-1,4-Dichloro-2-butene  
 Concen: 82.507 ug/l  
 RT: 12.38 min Scan# 3308  
 Delta R.T. 0.10 min  
 Lab File: VN064634.D  
 Acq: 13 Nov 2020 16:21

Instrument : MSVOA\_N  
 ClientSampled : BP-VPB178-GW-638-640RE

Tgt Ion	Resp	Lower	Upper
75	100		
53	0.3	84.0	126.0#
89	0.0	36.3	54.5#



#95  
 Naphthalene  
 Concen: 3.643 ug/l  
 RT: 15.11 min Scan# 4159  
 Delta R.T. 0.01 min  
 Lab File: VN064634.D  
 Acq: 13 Nov 2020 16:21

Tgt Ion	Resp	Lower	Upper
128	100		
127	0.0	10.5	15.7#
129	0.0	8.8	13.2#

