

Data Path : Z:\voasrv\HPCHEM1\MSVOA\_N\Data\VN111323\  
 Data File : VN080076.D  
 Acq On : 13 Nov 2023 19:05  
 Operator : JC\MD  
 Sample : PB157075ZHE#17  
 Misc : 5.0mL/MSVOA\_N/WATER  
 ALS Vial : 24 Sample Multiplier: 1

Instrument :  
 MSVOA\_N  
 ClientSampleId :  
 PB157075ZHE#17

Quant Time: Nov 14 19:26:37 2023  
 Quant Method : Z:\voasrv\HPCHEM1\MSVOA\_N\methods\82N110123W.M  
 Quant Title : SW846 8260  
 QLast Update : Thu Nov 02 05:49:08 2023  
 Response via : Initial Calibration

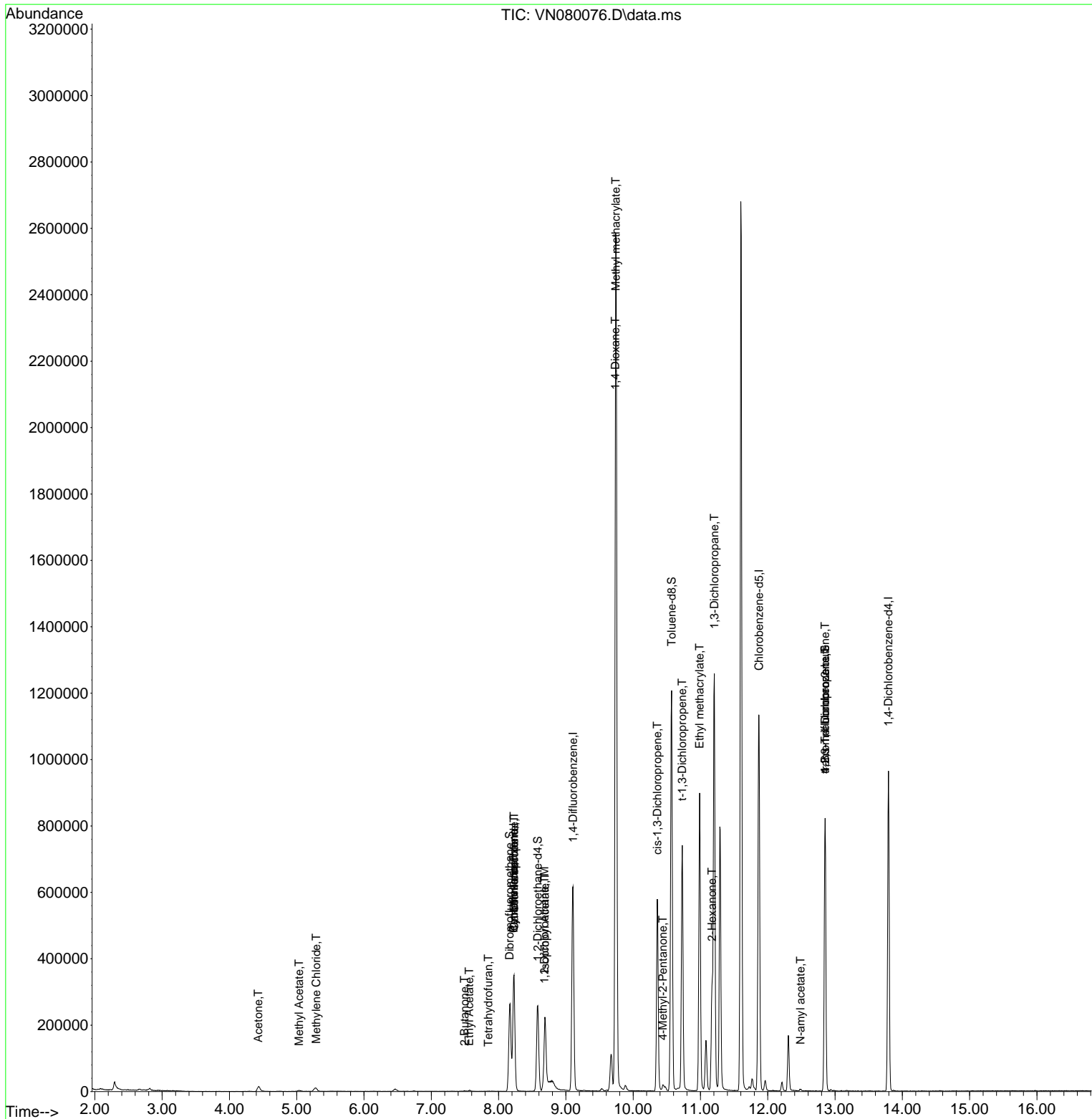
Compound	R.T.	QIon	Response	Conc	Units	Dev(Min)
-----						
Internal Standards						
1) Pentafluorobenzene	8.224	168	247509	50.000	ug/l	0.00
34) 1,4-Difluorobenzene	9.106	114	536177	50.000	ug/l	0.00
63) Chlorobenzene-d5	11.870	117	666097	50.000	ug/l	0.00
72) 1,4-Dichlorobenzene-d4	13.794	152	251325	50.000	ug/l	0.00
System Monitoring Compounds						
33) 1,2-Dichloroethane-d4	8.582	65	216248	57.347	ug/l	0.00
Spiked Amount	50.000	Range 74 - 125	Recovery	=	114.700%	
35) Dibromofluoromethane	8.165	113	192292	50.672	ug/l	0.00
Spiked Amount	50.000	Range 75 - 124	Recovery	=	101.340%	
50) Toluene-d8	10.570	98	825954	59.123	ug/l	0.00
Spiked Amount	50.000	Range 86 - 113	Recovery	=	118.240%#	
62) 4-Bromofluorobenzene	12.853	95	290688	62.740	ug/l	0.00
Spiked Amount	50.000	Range 83 - 123	Recovery	=	125.480%#	
Target Compounds						
					Qvalue	
3) Chloromethane	2.365	50	876	Below Cal	#	42
16) Acetone	4.430	43	29349	22.158	ug/l	91
18) Methyl Acetate	5.036	43	6419	1.013	ug/l	# 69
20) Methylene Chloride	5.288	84	9009	2.696	ug/l	# 96
25) 2-Butanone	7.494	43	3037	1.566	ug/l	# 69
29) Tetrahydrofuran	7.847	42	498	0.395	ug/l	# 41
31) Cyclohexane	8.224	56	5467	1.097	ug/l	# 1
36) 1,1-Dichloropropene	8.229	75	21238	3.920	ug/l	# 48
37) Ethyl Acetate	7.565	43	4744	0.955	ug/l	# 81
38) Carbon Tetrachloride	8.229	117	26887	4.924	ug/l	# 16
42) 1,2-Dichloroethane	8.682	62	1214	0.214	ug/l	# 73
43) Isopropyl Acetate	8.688	43	252608	28.986	ug/l	# 81
48) Methyl methacrylate	9.741	41	235579	61.716	ug/l	# 28
49) 1,4-Dioxane	9.735	88	391	5.797	ug/l	# 1
51) 4-Methyl-2-Pentanone	10.441	43	10586	2.158	ug/l	98
53) t-1,3-Dichloropropene	10.729	75	1969	0.333	ug/l	# 17
54) cis-1,3-Dichloropropene	10.359	75	98511	15.265	ug/l	# 72
56) Ethyl methacrylate	10.988	69	4761	0.863	ug/l	# 1
57) 1,3-Dichloropropane	11.206	76	13081	1.918	ug/l	# 44
59) 2-Hexanone	11.170	43	244500	65.143	ug/l	# 19
74) N-amyl acetate	12.488	43	2884	0.346	ug/l	# 40
76) 1,2,3-Trichloropropane	12.853	75	153252	25.973	ug/l	# 1
81) trans-1,4-Dichloro-2-b...	12.853	75	153252	70.667	ug/l	# 15

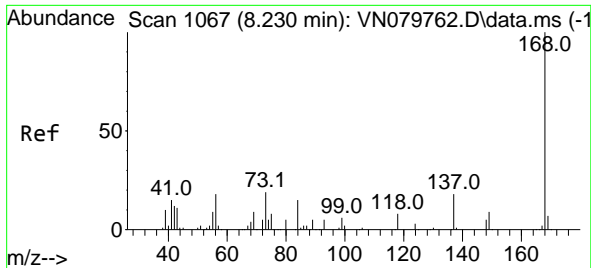
(#) = qualifier out of range (m) = manual integration (+) = signals summed

Data Path : Z:\voasrv\HPCHEM1\MSVOA\_N\Data\VN111323\  
 Data File : VN080076.D  
 Acq On : 13 Nov 2023 19:05  
 Operator : JC\MD  
 Sample : PB157075ZHE#17  
 Misc : 5.0mL/MSVOA\_N/WATER  
 ALS Vial : 24 Sample Multiplier: 1

Instrument :  
 MSVOA\_N  
 ClientSampleId :  
 PB157075ZHE#17

Quant Time: Nov 14 19:26:37 2023  
 Quant Method : Z:\voasrv\HPCHEM1\MSVOA\_N\methods\82N110123W.M  
 Quant Title : SW846 8260  
 QLast Update : Thu Nov 02 05:49:08 2023  
 Response via : Initial Calibration

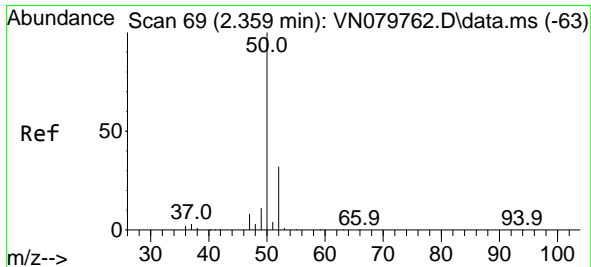
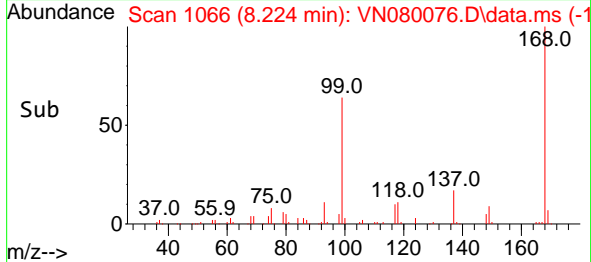
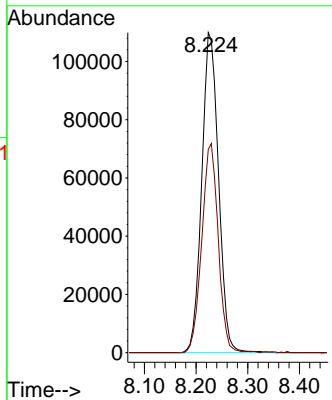
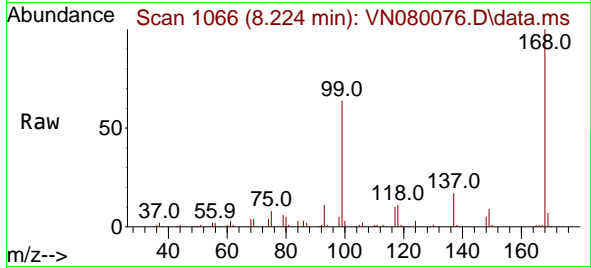




#1  
 Pentafluorobenzene  
 Concen: 50.000 ug/l  
 RT: 8.224 min Scan# 10  
 Delta R.T. -0.005 min  
 Lab File: VN080076.D  
 Acq: 13 Nov 2023 19:05

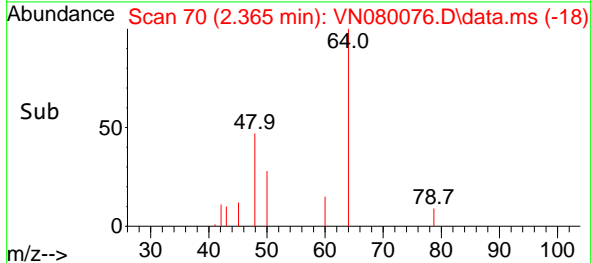
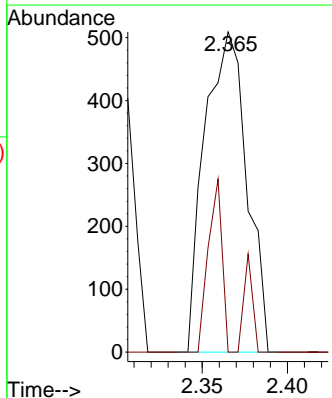
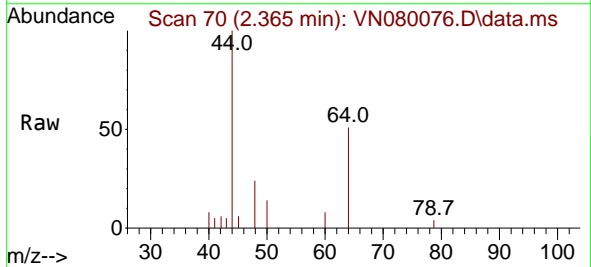
Instrument : MSVOA\_N  
 ClientSampleId : PB157075ZHE#17

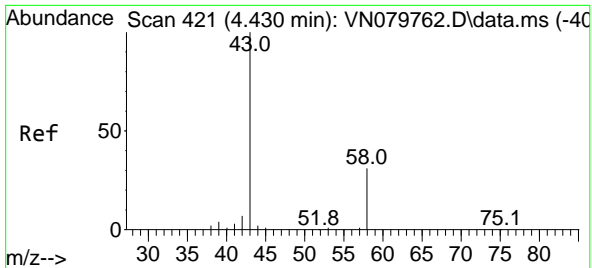
Tgt Ion:168 Resp: 247509  
 Ion Ratio Lower Upper  
 168 100  
 99 63.5 53.0 79.6



#3  
 Chloromethane  
 Concen: Below Cal  
 RT: 2.365 min Scan# 70  
 Delta R.T. 0.006 min  
 Lab File: VN080076.D  
 Acq: 13 Nov 2023 19:05

Tgt Ion: 50 Resp: 876  
 Ion Ratio Lower Upper  
 50 100  
 52 0.0 26.5 39.7#

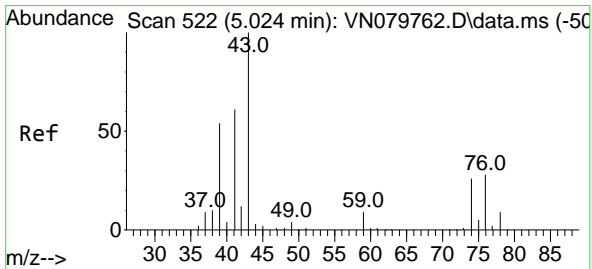
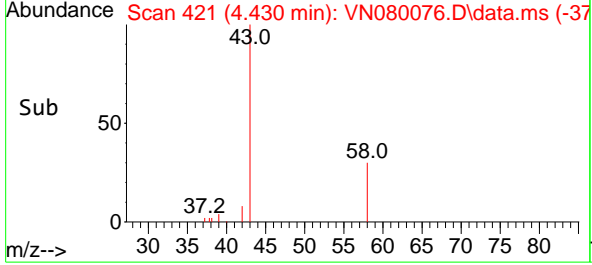
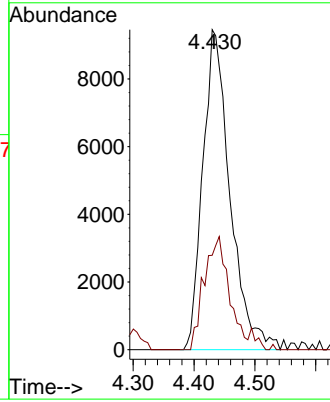
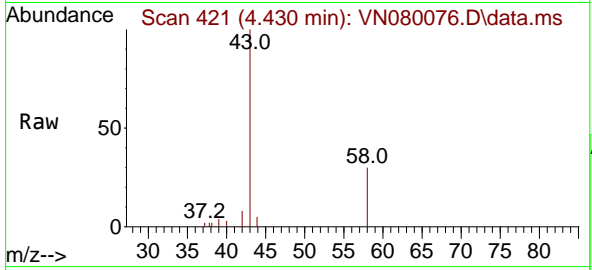




#16  
 Acetone  
 Concen: 22.158 ug/l  
 RT: 4.430 min Scan# 41  
 Delta R.T. -0.000 min  
 Lab File: VN080076.D  
 Acq: 13 Nov 2023 19:05

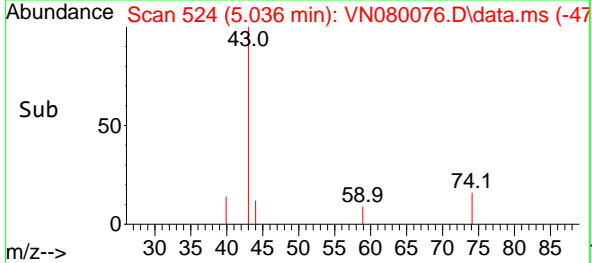
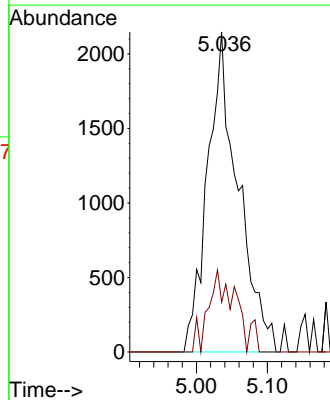
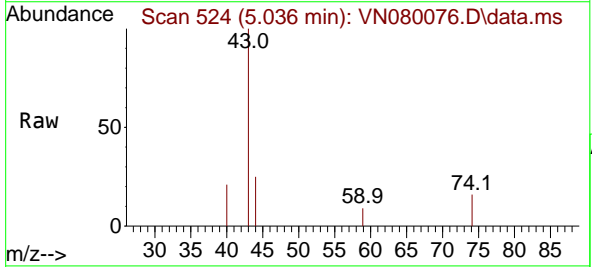
Instrument : MSVOA\_N  
 ClientSampleId : PB157075ZHE#17

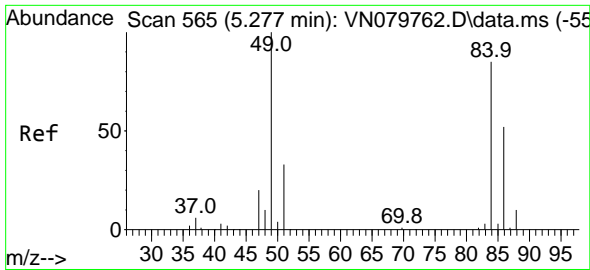
Tgt Ion: 43 Resp: 29349  
 Ion Ratio Lower Upper  
 43 100  
 58 29.5 28.0 42.0



#18  
 Methyl Acetate  
 Concen: 1.013 ug/l  
 RT: 5.036 min Scan# 524  
 Delta R.T. 0.012 min  
 Lab File: VN080076.D  
 Acq: 13 Nov 2023 19:05

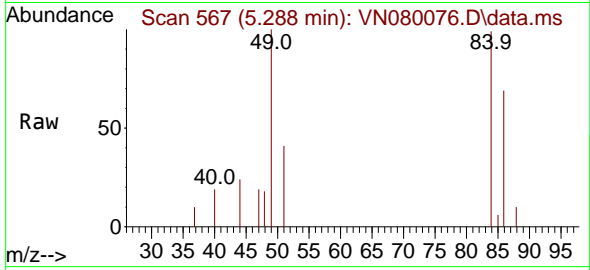
Tgt Ion: 43 Resp: 6419  
 Ion Ratio Lower Upper  
 43 100  
 74 15.5 26.2 39.4#



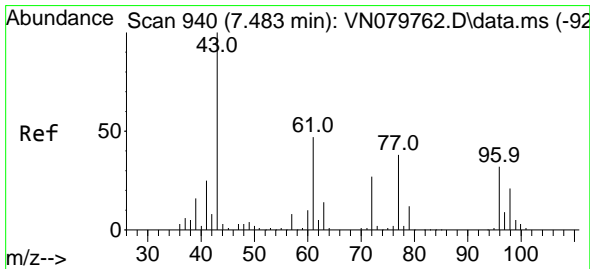
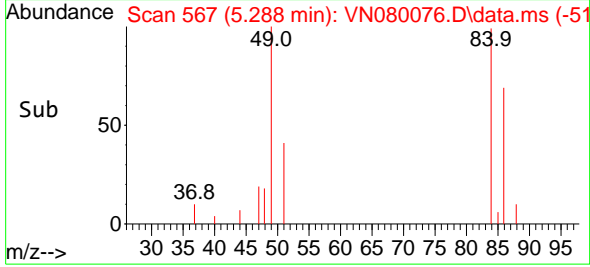
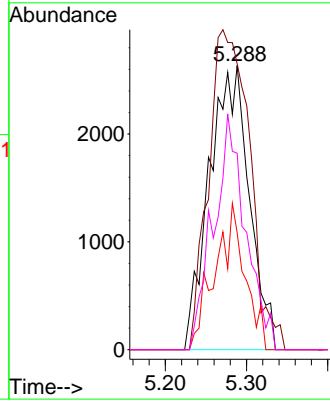


#20  
 Methylene Chloride  
 Concen: 2.696 ug/l  
 RT: 5.288 min Scan# 501  
 Delta R.T. 0.018 min  
 Lab File: VN080076.D  
 Acq: 13 Nov 2023 19:05

Instrument : MSVOA\_N  
 ClientSampleId : PB157075ZHE#17

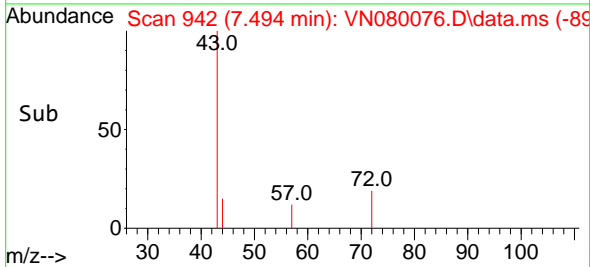
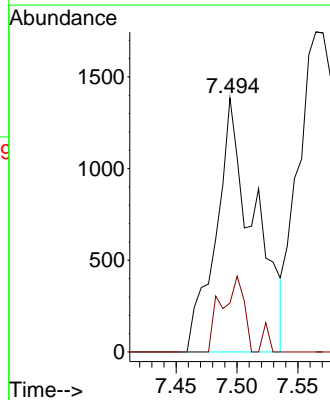
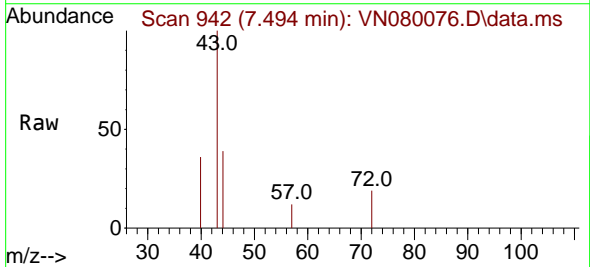


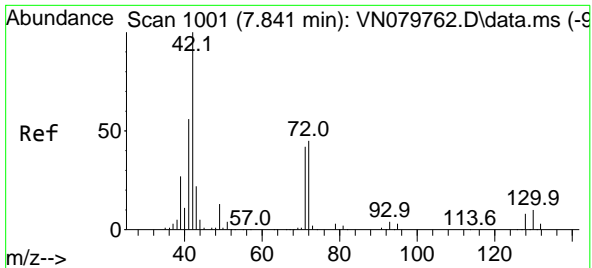
Tgt Ion: 84 Resp: 9009  
 Ion Ratio Lower Upper  
 84 100  
 49 100.6 79.7 119.5  
 51 41.2 25.2 37.8#  
 86 69.1 53.3 79.9



#25  
 2-Butanone  
 Concen: 1.566 ug/l  
 RT: 7.494 min Scan# 942  
 Delta R.T. 0.006 min  
 Lab File: VN080076.D  
 Acq: 13 Nov 2023 19:05

Tgt Ion: 43 Resp: 3037  
 Ion Ratio Lower Upper  
 43 100  
 72 19.3 30.2 45.2#

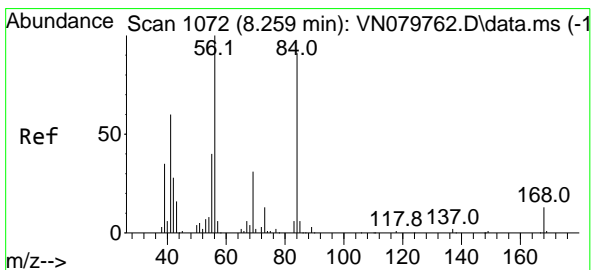
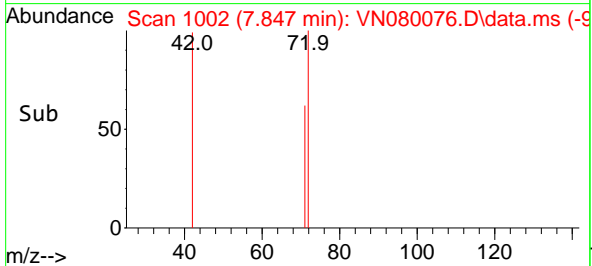
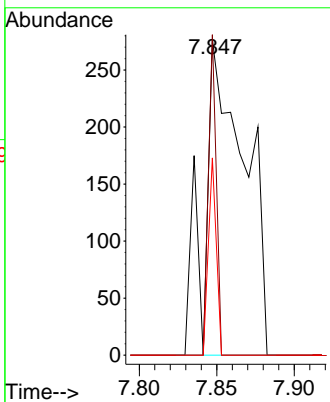
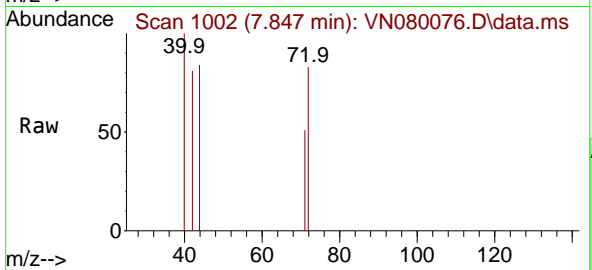




#29  
 Tetrahydrofuran  
 Concen: 0.395 ug/l  
 RT: 7.847 min Scan# 1066  
 Delta R.T. 0.006 min  
 Lab File: VN080076.D  
 Acq: 13 Nov 2023 19:05

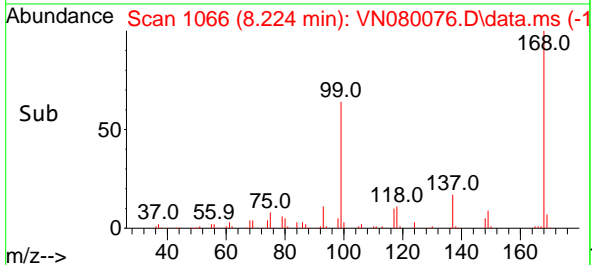
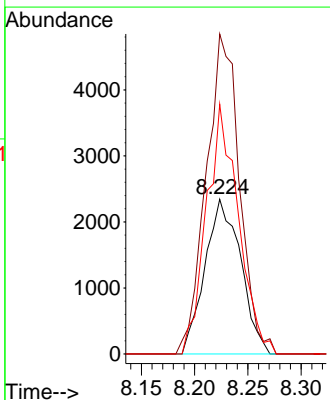
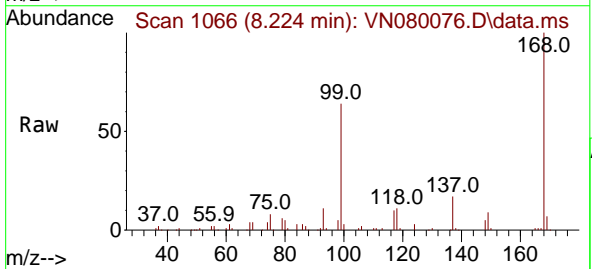
Instrument : MSVOA\_N  
 ClientSampleId : PB157075ZHE#17

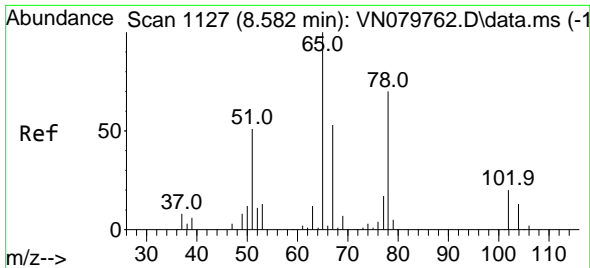
Tgt Ion	Resp	Lower	Upper
42	100		
72	19.9	49.8	74.6#
71	12.2	47.4	71.2#



#31  
 Cyclohexane  
 Concen: 1.097 ug/l  
 RT: 8.224 min Scan# 1066  
 Delta R.T. -0.035 min  
 Lab File: VN080076.D  
 Acq: 13 Nov 2023 19:05

Tgt Ion	Resp	Lower	Upper
56	100		
69	206.9	26.8	40.2#
84	161.5	81.8	122.6#

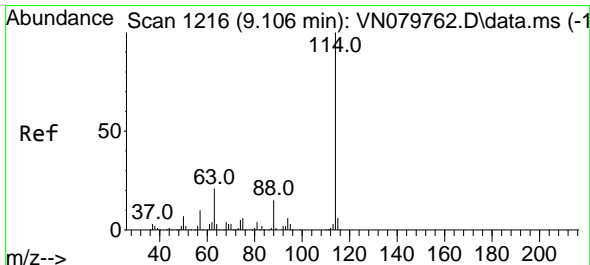
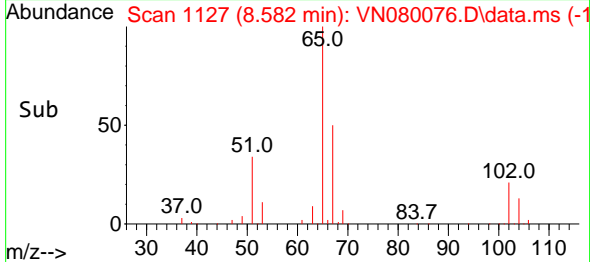
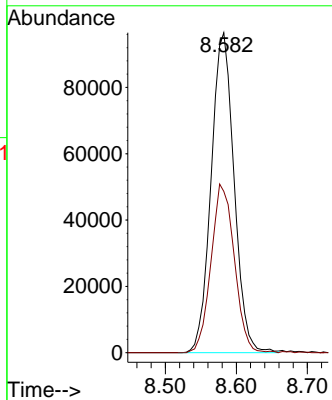
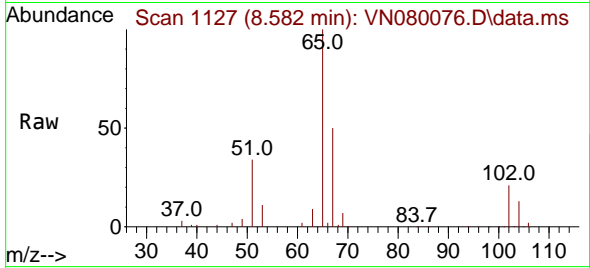




#33  
 1,2-Dichloroethane-d4  
 Concen: 57.347 ug/l  
 RT: 8.582 min Scan# 1127  
 Delta R.T. -0.000 min  
 Lab File: VN080076.D  
 Acq: 13 Nov 2023 19:05

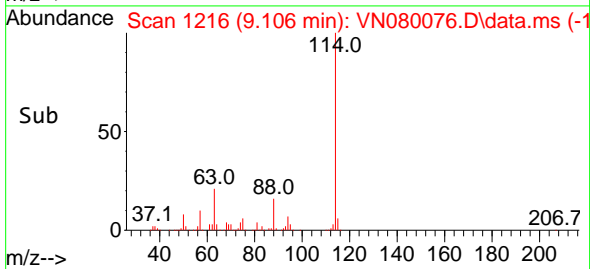
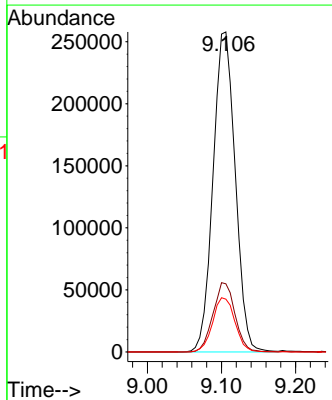
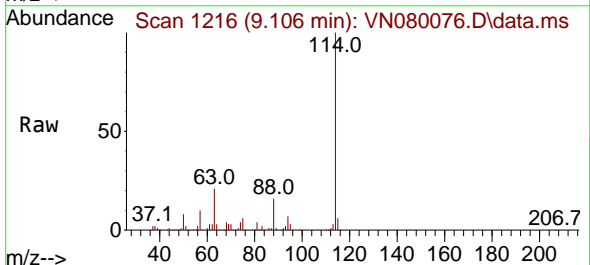
Instrument : MSVOA\_N  
 ClientSampleId : PB157075ZHE#17

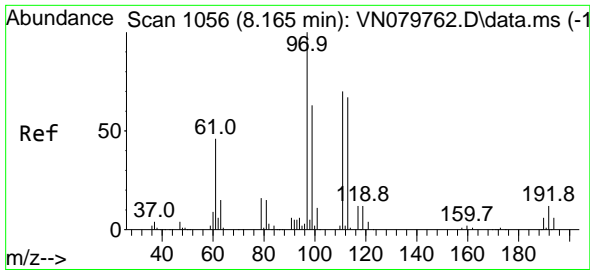
Tgt Ion: 65 Resp: 216248  
 Ion Ratio Lower Upper  
 65 100  
 67 53.5 0.0 106.6



#34  
 1,4-Difluorobenzene  
 Concen: 50.000 ug/l  
 RT: 9.106 min Scan# 1216  
 Delta R.T. -0.000 min  
 Lab File: VN080076.D  
 Acq: 13 Nov 2023 19:05

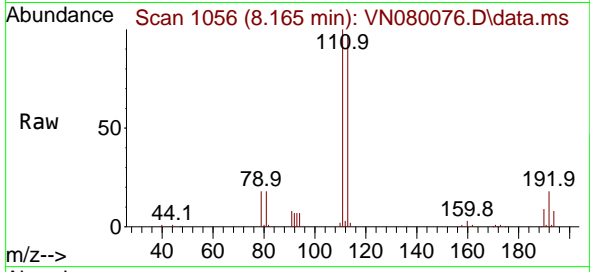
Tgt Ion:114 Resp: 536177  
 Ion Ratio Lower Upper  
 114 100  
 63 21.3 0.0 36.4  
 88 16.5 0.0 30.6



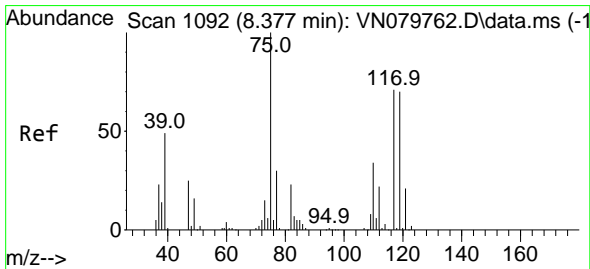
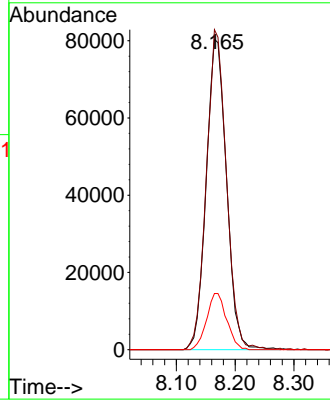
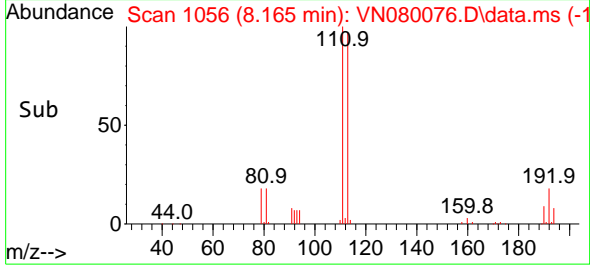


#35  
 Dibromofluoromethane  
 Concen: 50.672 ug/l  
 RT: 8.165 min Scan# 1067  
 Delta R.T. -0.006 min  
 Lab File: VN080076.D  
 Acq: 13 Nov 2023 19:05

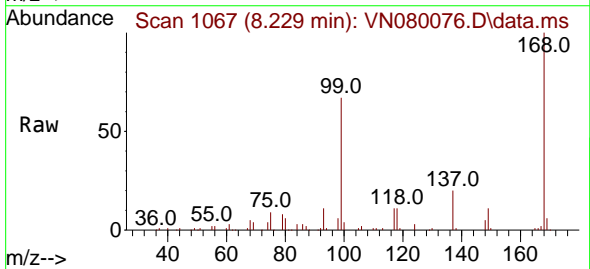
Instrument : MSVOA\_N  
 ClientSampleId : PB157075ZHE#17



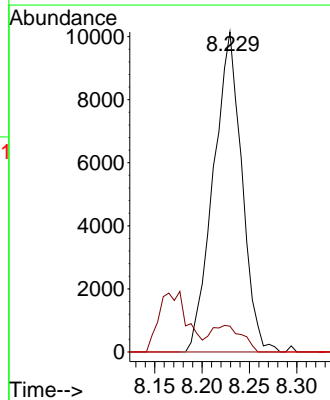
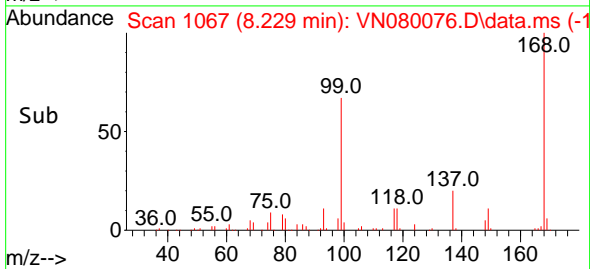
Tgt Ion:113 Resp: 192292  
 Ion Ratio Lower Upper  
 113 100  
 111 101.8 82.6 123.8  
 192 17.8 12.7 19.1



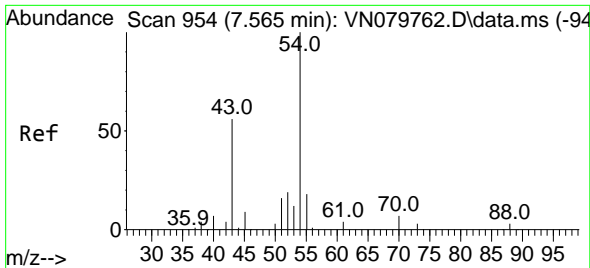
#36  
 1,1-Dichloropropene  
 Concen: 3.920 ug/l  
 RT: 8.229 min Scan# 1067  
 Delta R.T. -0.147 min  
 Lab File: VN080076.D  
 Acq: 13 Nov 2023 19:05



Tgt Ion: 75 Resp: 21238  
 Ion Ratio Lower Upper  
 75 100  
 110 9.2 19.1 57.3#  
 77 0.0 25.0 37.4#



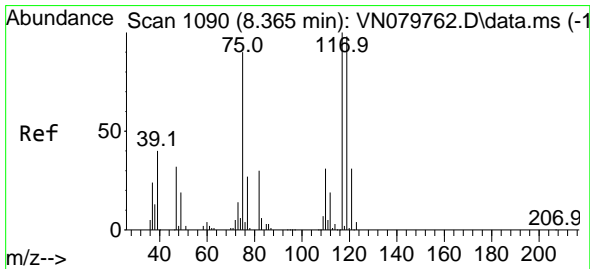
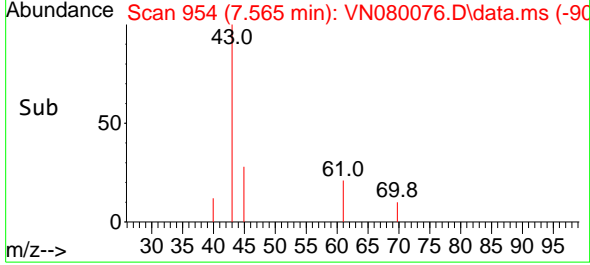
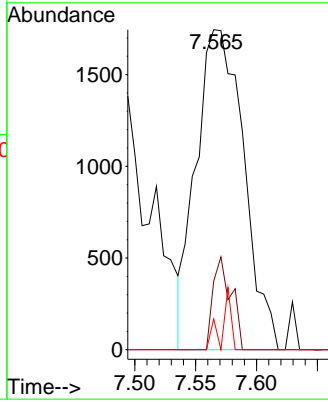
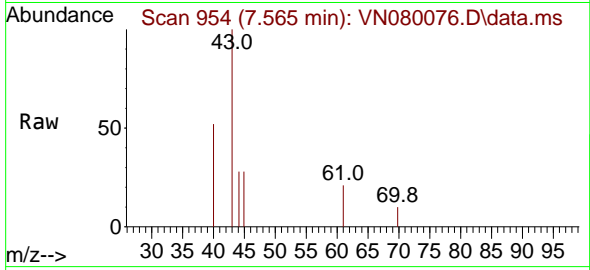




#37  
 Ethyl Acetate  
 Concen: 0.955 ug/l  
 RT: 7.565 min Scan# 91  
 Delta R.T. -0.000 min  
 Lab File: VN080076.D  
 Acq: 13 Nov 2023 19:05

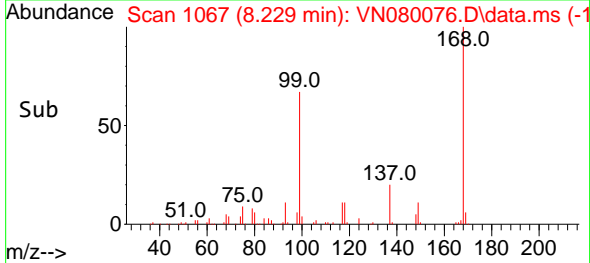
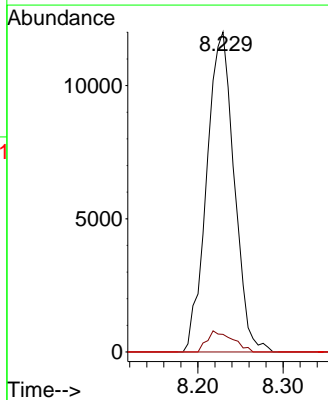
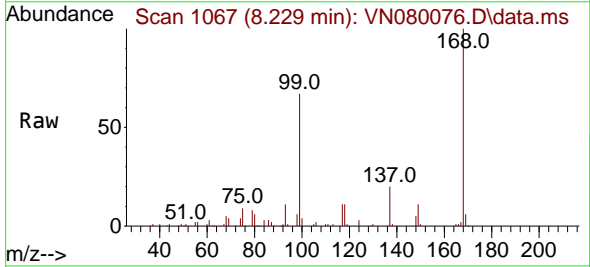
Instrument : MSVOA\_N  
 ClientSampleId : PB157075ZHE#17

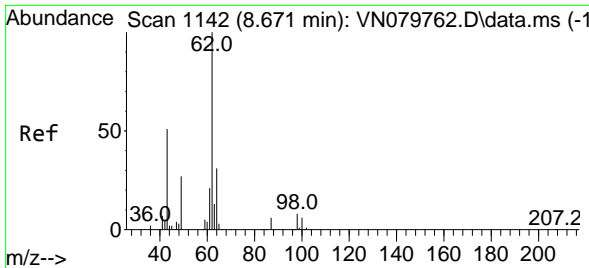
Tgt Ion	Resp	Lower	Upper
43	4744		
61	11.1	13.2	19.8#
70	3.8	11.3	16.9#



#38  
 Carbon Tetrachloride  
 Concen: 4.924 ug/l  
 RT: 8.229 min Scan# 1067  
 Delta R.T. -0.129 min  
 Lab File: VN080076.D  
 Acq: 13 Nov 2023 19:05

Tgt Ion	Resp	Lower	Upper
117	26887		
119	5.5	77.3	115.9#
121	0.0	23.3	34.9#

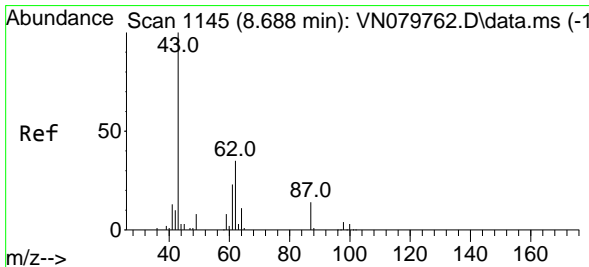
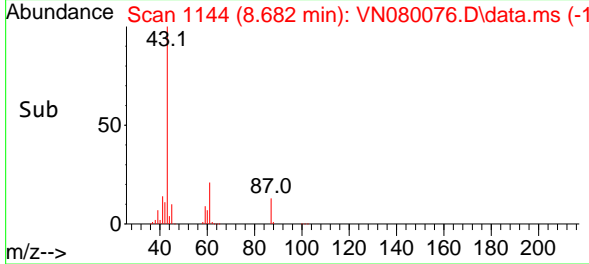
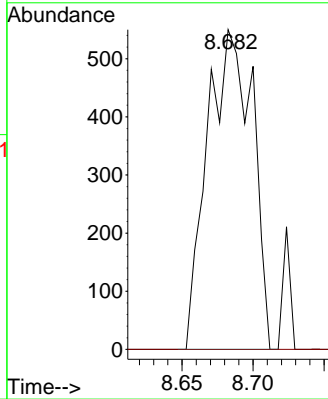
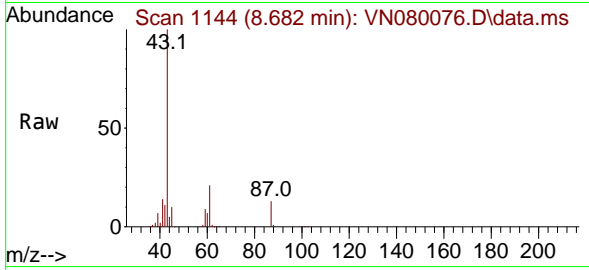




#42  
 1,2-Dichloroethane  
 Concen: 0.214 ug/l  
 RT: 8.682 min Scan# 1144  
 Delta R.T. 0.012 min  
 Lab File: VN080076.D  
 Acq: 13 Nov 2023 19:05

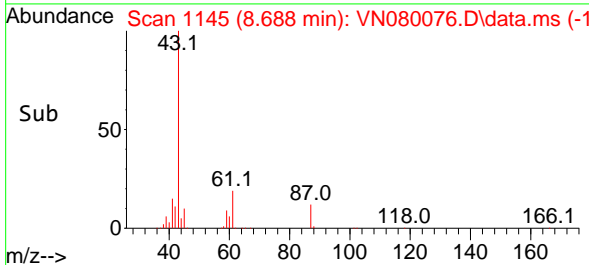
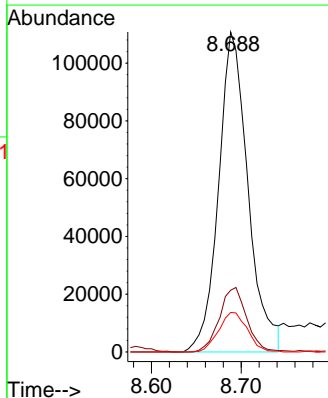
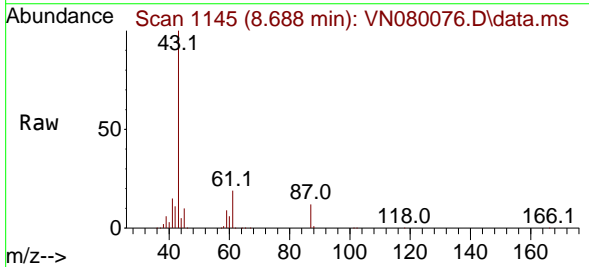
Instrument : MSVOA\_N  
 ClientSampleId : PB157075ZHE#17

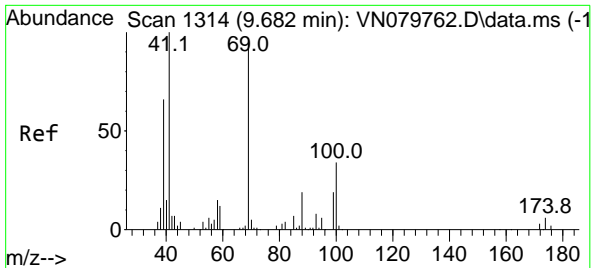
Tgt Ion: 62 Resp: 1214  
 Ion Ratio Lower Upper  
 62 100  
 98 0.0 0.0 19.8



#43  
 Isopropyl Acetate  
 Concen: 28.986 ug/l  
 RT: 8.688 min Scan# 1145  
 Delta R.T. -0.000 min  
 Lab File: VN080076.D  
 Acq: 13 Nov 2023 19:05

Tgt Ion: 43 Resp: 252608  
 Ion Ratio Lower Upper  
 43 100  
 61 18.8 24.7 37.1#  
 87 12.1 14.6 21.8#

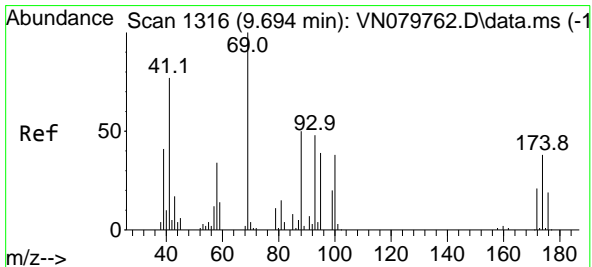
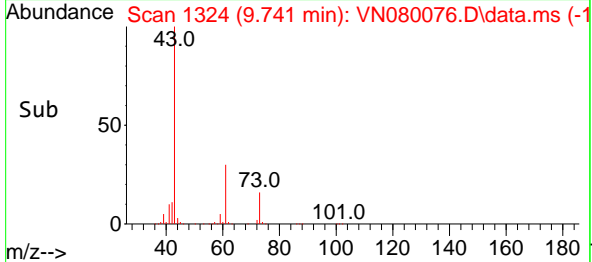
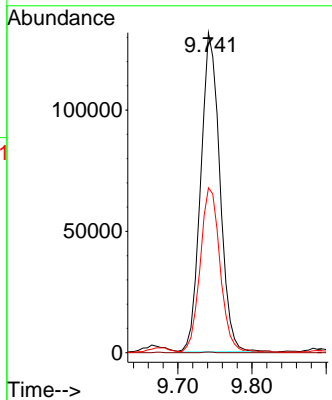
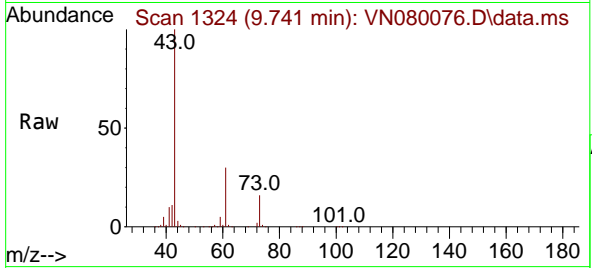




#48  
 Methyl methacrylate  
 Concen: 61.716 ug/l  
 RT: 9.741 min Scan# 11  
 Delta R.T. 0.059 min  
 Lab File: VN080076.D  
 Acq: 13 Nov 2023 19:05

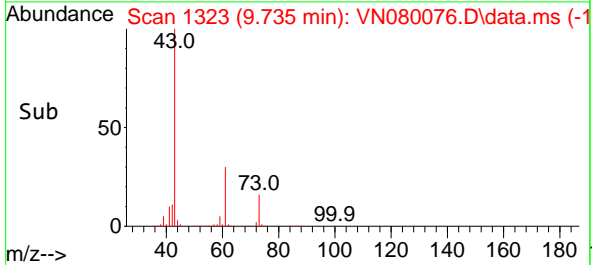
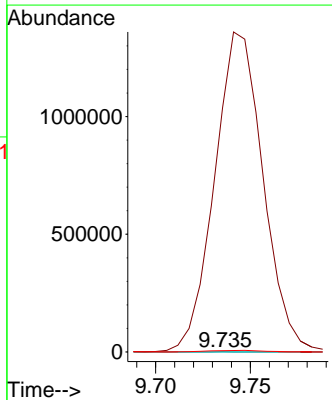
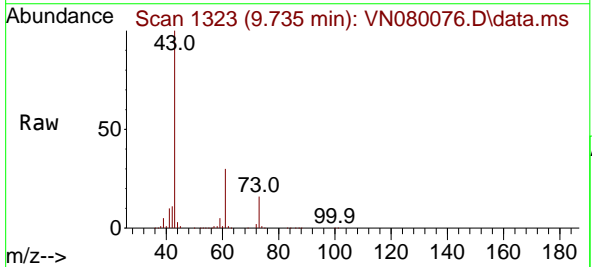
Instrument : MSVOA\_N  
 ClientSampleId : PB157075ZHE#17

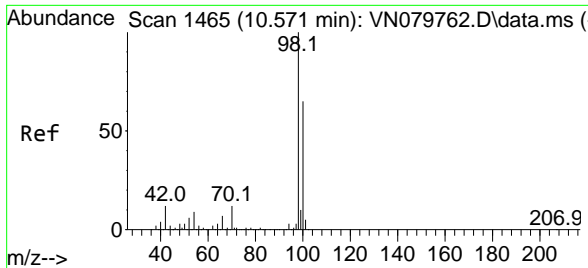
Tgt Ion: 41 Resp: 235579  
 Ion Ratio Lower Upper  
 41 100  
 69 0.1 90.4 135.6#  
 39 53.4 54.6 81.8#



#49  
 1,4-Dioxane  
 Concen: 5.797 ug/l  
 RT: 9.735 min Scan# 1323  
 Delta R.T. 0.041 min  
 Lab File: VN080076.D  
 Acq: 13 Nov 2023 19:05

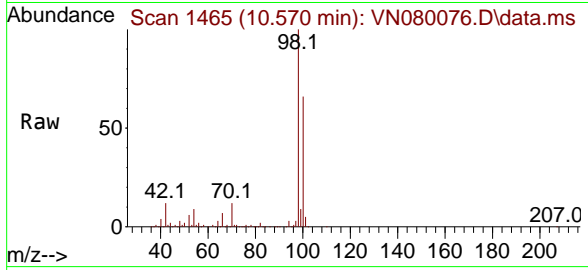
Tgt Ion: 88 Resp: 391  
 Ion Ratio Lower Upper  
 88 100  
 43 622888.5 17.0 25.6#  
 58 3484.4 47.0 70.4#



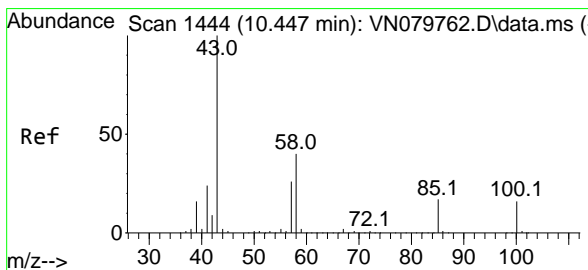
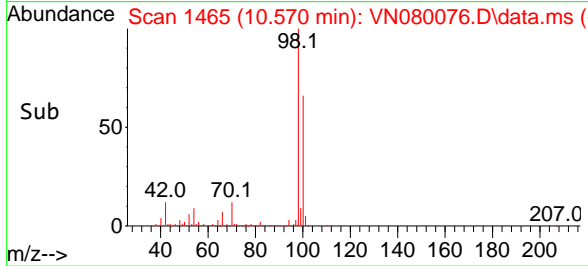
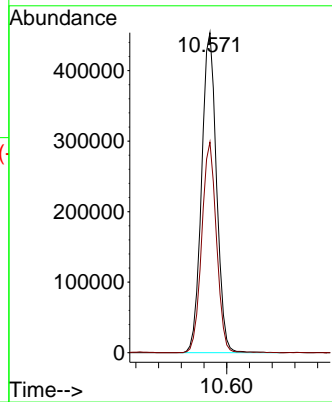


#50  
 Toluene-d8  
 Concen: 59.123 ug/l  
 RT: 10.570 min Scan# 14  
 Delta R.T. 0.000 min  
 Lab File: VN080076.D  
 Acq: 13 Nov 2023 19:05

Instrument : MSVOA\_N  
 ClientSampleId : PB157075ZHE#17

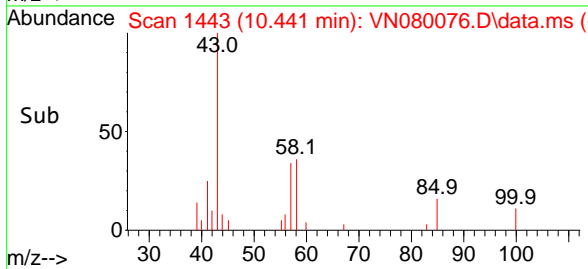
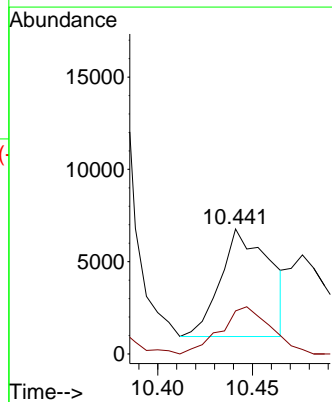
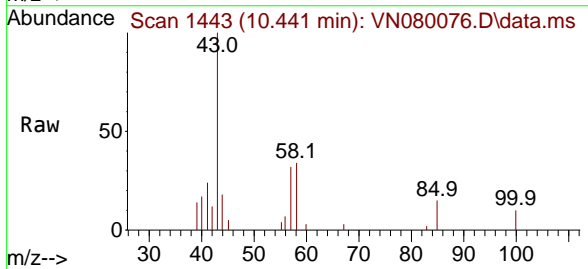


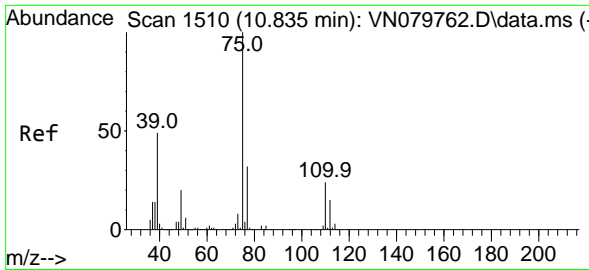
Tgt Ion: 98 Resp: 825954  
 Ion Ratio Lower Upper  
 98 100  
 100 65.0 52.0 78.0



#51  
 4-Methyl-2-Pentanone  
 Concen: 2.158 ug/l  
 RT: 10.441 min Scan# 1443  
 Delta R.T. -0.006 min  
 Lab File: VN080076.D  
 Acq: 13 Nov 2023 19:05

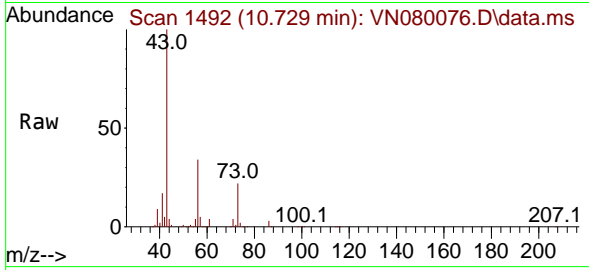
Tgt Ion: 43 Resp: 10586  
 Ion Ratio Lower Upper  
 43 100  
 58 44.5 36.6 54.8



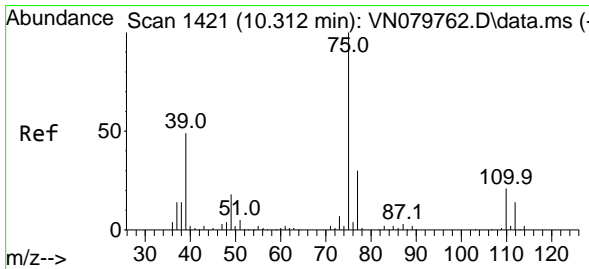
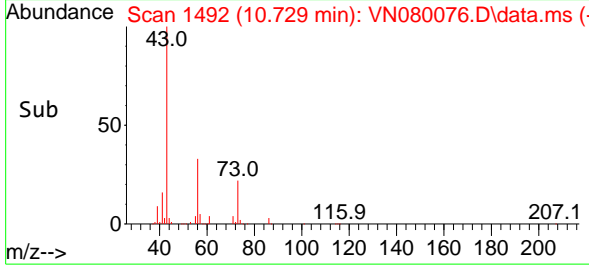
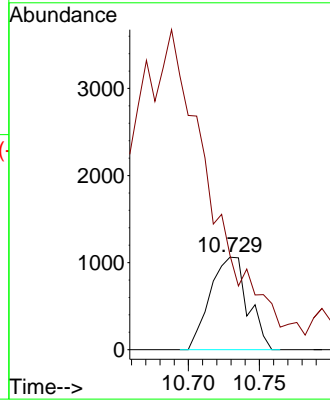


#53  
 t-1,3-Dichloropropene  
 Concen: 0.333 ug/l  
 RT: 10.729 min Scan# 1429  
 Delta R.T. -0.112 min  
 Lab File: VN080076.D  
 Acq: 13 Nov 2023 19:05

Instrument : MSVOA\_N  
 ClientSampleId : PB157075ZHE#17

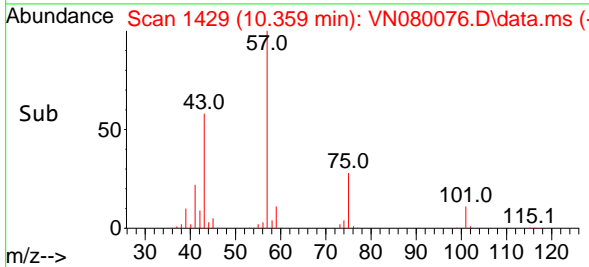
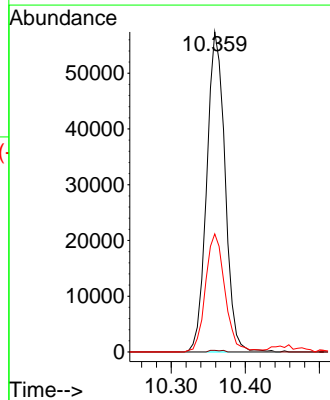
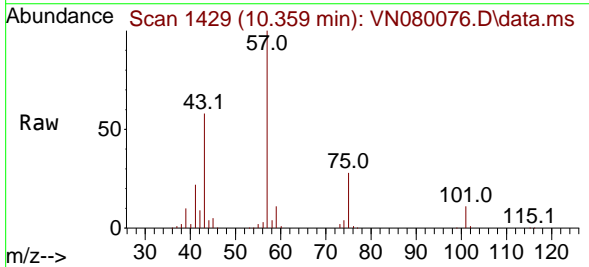


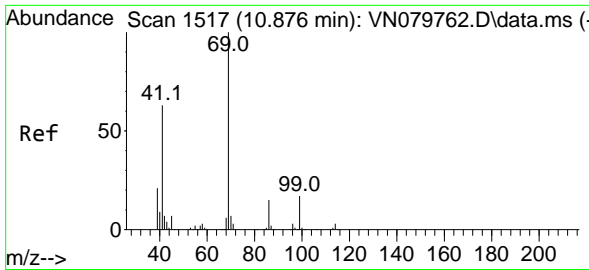
Tgt Ion: 75 Resp: 1969  
 Ion Ratio Lower Upper  
 75 100  
 77 77.8 25.4 38.0#



#54  
 cis-1,3-Dichloropropene  
 Concen: 15.265 ug/l  
 RT: 10.359 min Scan# 1429  
 Delta R.T. 0.041 min  
 Lab File: VN080076.D  
 Acq: 13 Nov 2023 19:05

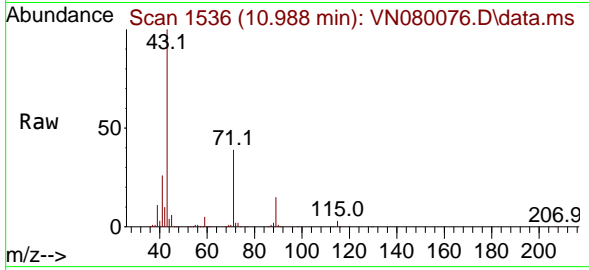
Tgt Ion: 75 Resp: 98511  
 Ion Ratio Lower Upper  
 75 100  
 77 0.5 26.1 39.1#  
 39 36.9 31.6 47.4



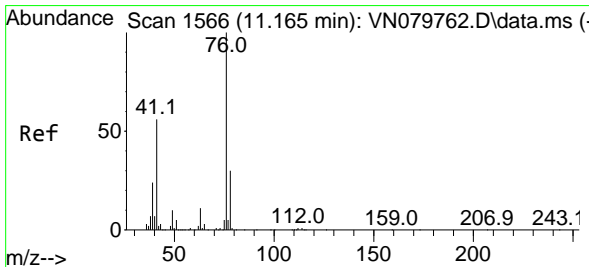
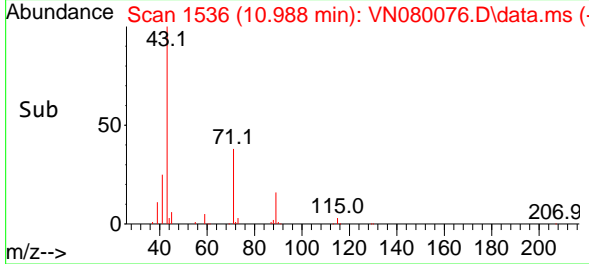
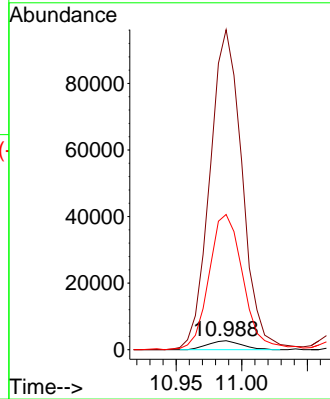


#56  
 Ethyl methacrylate  
 Concen: 0.863 ug/l  
 RT: 10.988 min Scan# 1536  
 Delta R.T. 0.112 min  
 Lab File: VN080076.D  
 Acq: 13 Nov 2023 19:05

Instrument : MSVOA\_N  
 ClientSampleId : PB157075ZHE#17

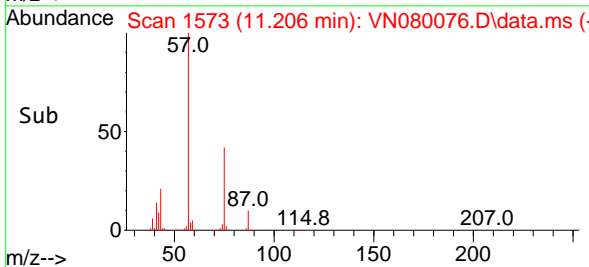
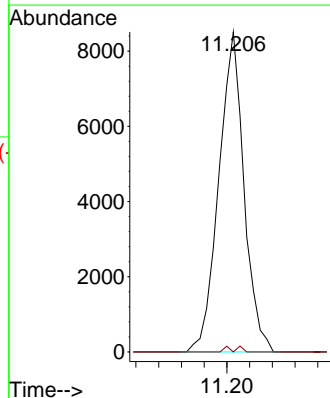
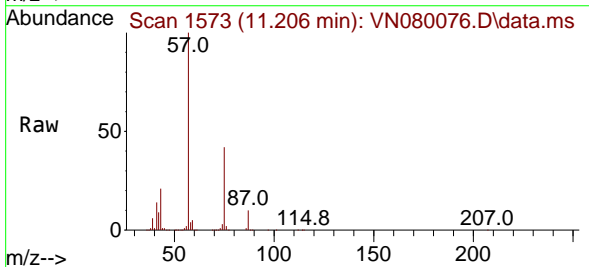


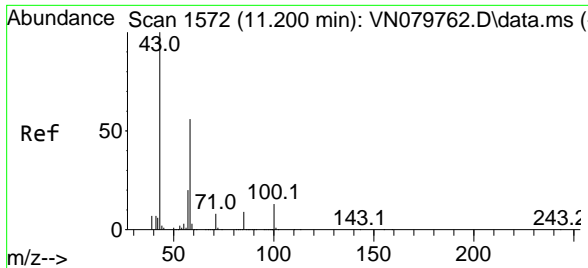
Tgt Ion: 69 Resp: 4761  
 Ion Ratio Lower Upper  
 69 100  
 41 3471.0 39.6 59.4#  
 39 1544.5 28.6 43.0#



#57  
 1,3-Dichloropropane  
 Concen: 1.918 ug/l  
 RT: 11.206 min Scan# 1573  
 Delta R.T. 0.041 min  
 Lab File: VN080076.D  
 Acq: 13 Nov 2023 19:05

Tgt Ion: 76 Resp: 13081  
 Ion Ratio Lower Upper  
 76 100  
 78 0.8 26.1 39.1#

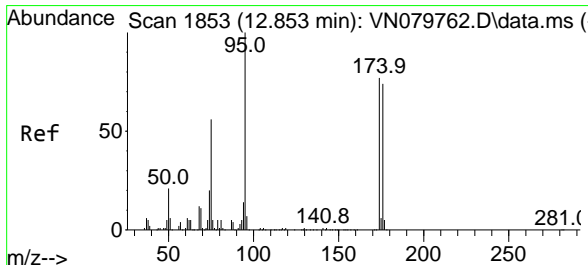
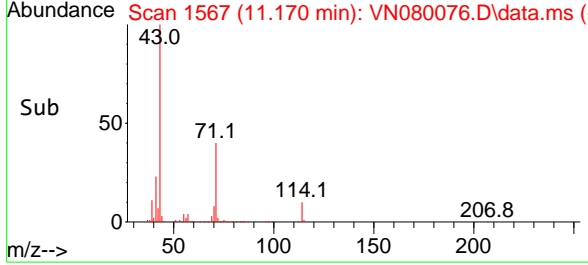
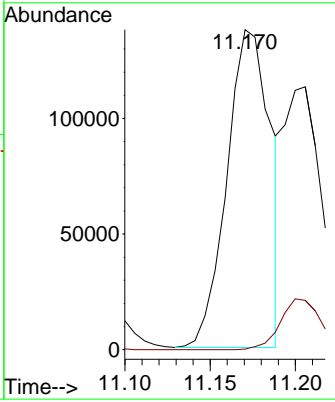
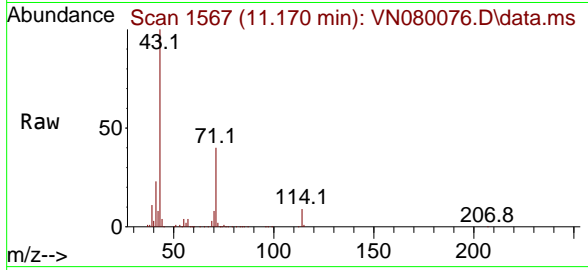




#59  
 2-Hexanone  
 Concen: 65.143 ug/l  
 RT: 11.170 min Scan# 11170  
 Delta R.T. -0.029 min  
 Lab File: VN080076.D  
 Acq: 13 Nov 2023 19:05

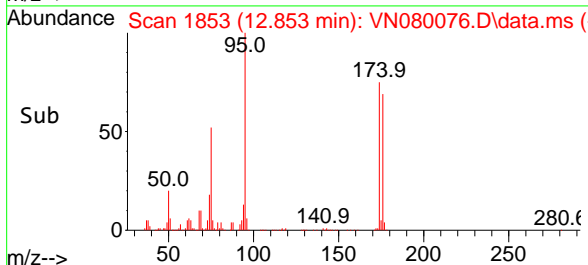
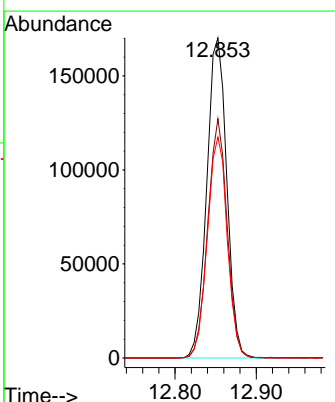
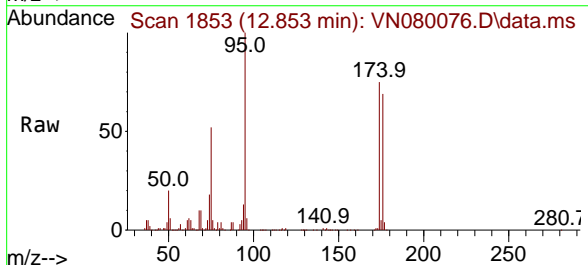
Instrument : MSVOA\_N  
 ClientSampleId : PB157075ZHE#17

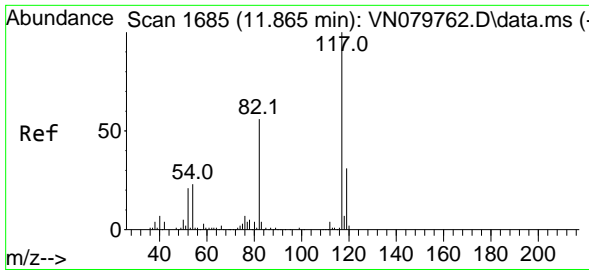
Tgt Ion: 43 Resp: 244500  
 Ion Ratio Lower Upper  
 43 100  
 58 0.0 31.7 95.1#



#62  
 4-Bromofluorobenzene  
 Concen: 62.740 ug/l  
 RT: 12.853 min Scan# 1853  
 Delta R.T. -0.000 min  
 Lab File: VN080076.D  
 Acq: 13 Nov 2023 19:05

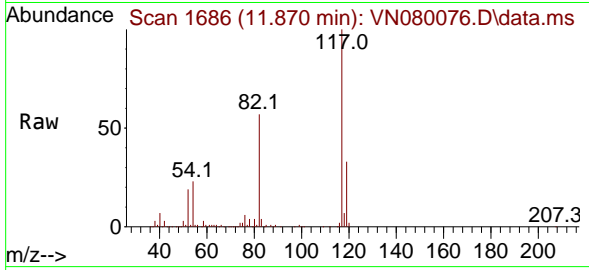
Tgt Ion: 95 Resp: 290688  
 Ion Ratio Lower Upper  
 95 100  
 174 72.5 0.0 143.8  
 176 68.7 0.0 135.8



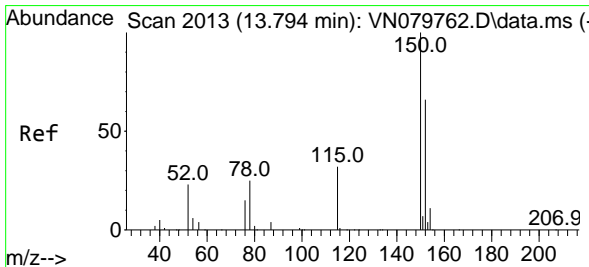
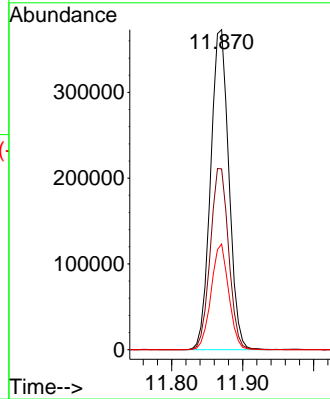
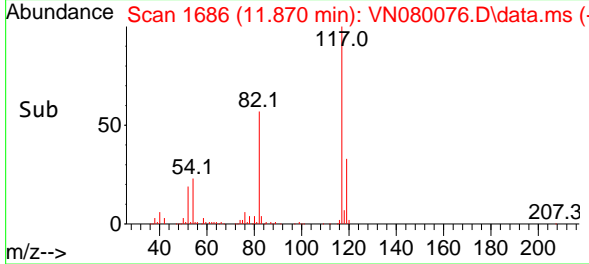


#63  
 Chlorobenzene-d5  
 Concen: 50.000 ug/l  
 RT: 11.870 min Scan# 11  
 Delta R.T. 0.000 min  
 Lab File: VN080076.D  
 Acq: 13 Nov 2023 19:05

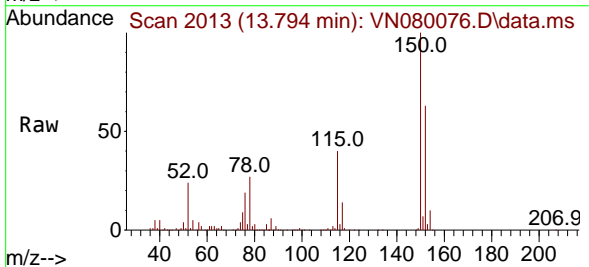
Instrument :  
 MSVOA\_N  
 ClientSampleId :  
 PB157075ZHE#17



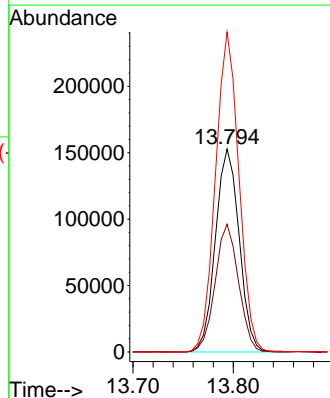
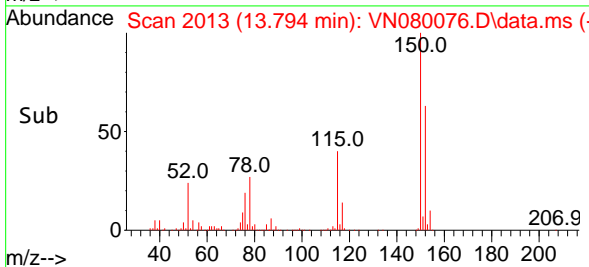
Tgt Ion:117 Resp: 666097  
 Ion Ratio Lower Upper  
 117 100  
 82 56.5 44.0 66.0  
 119 33.0 25.6 38.4



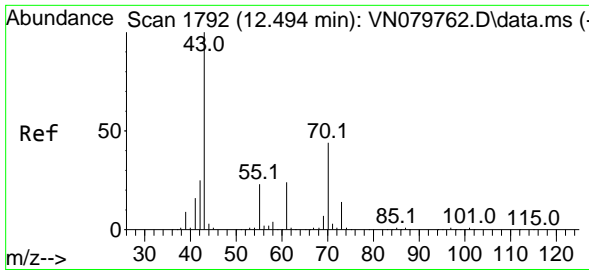
#72  
 1,4-Dichlorobenzene-d4  
 Concen: 50.000 ug/l  
 RT: 13.794 min Scan# 2013  
 Delta R.T. -0.000 min  
 Lab File: VN080076.D  
 Acq: 13 Nov 2023 19:05



Tgt Ion:152 Resp: 251325  
 Ion Ratio Lower Upper  
 152 100  
 115 62.1 32.3 96.8  
 150 155.6 0.0 355.8

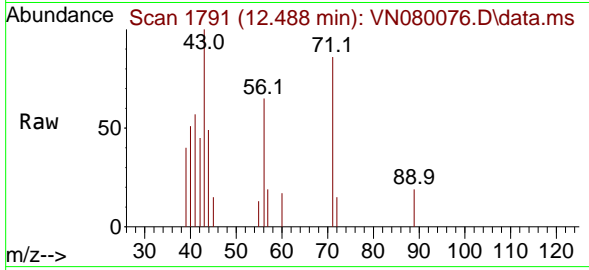






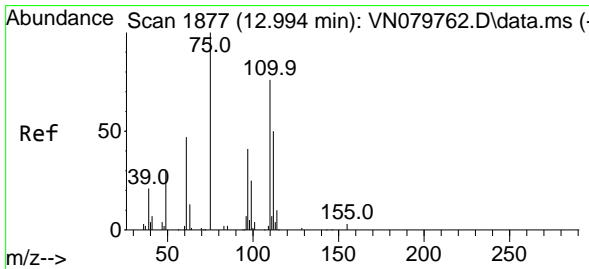
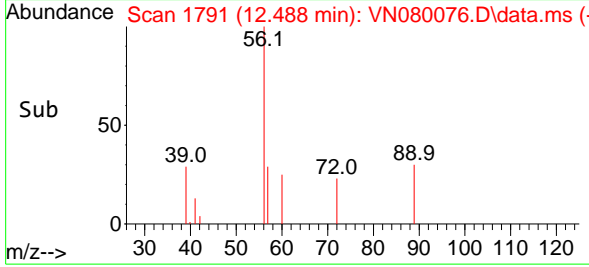
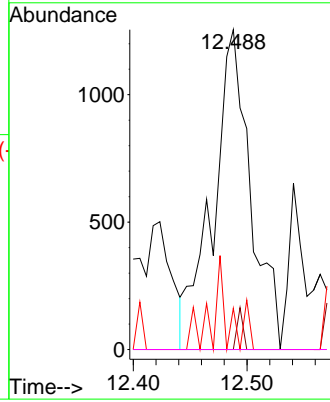
#74  
 N-amy1 acetate  
 Concen: 0.346 ug/l  
 RT: 12.488 min Scan# 11  
 Delta R.T. -0.006 min  
 Lab File: VN080076.D  
 Acq: 13 Nov 2023 19:05

Instrument :  
 MSVOA\_N  
 ClientSampleId :  
 PB157075ZHE#17



Tgt Ion: 43 Resp: 2884

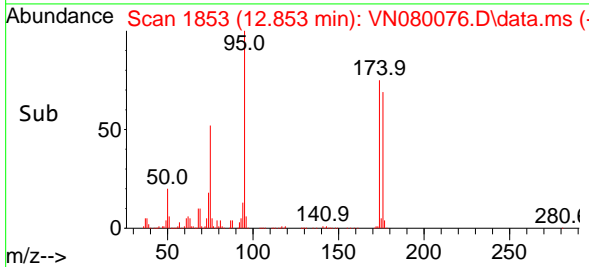
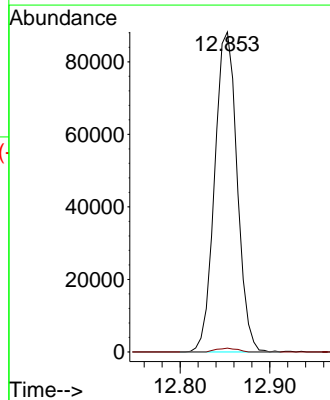
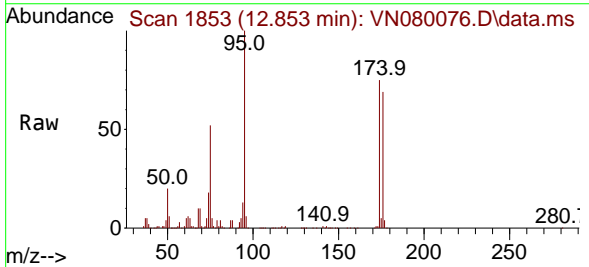
Ion	Ratio	Lower	Upper
43	100		
70	0.0	43.4	65.2#
55	8.7	21.4	32.0#
61	0.0	22.8	34.2#

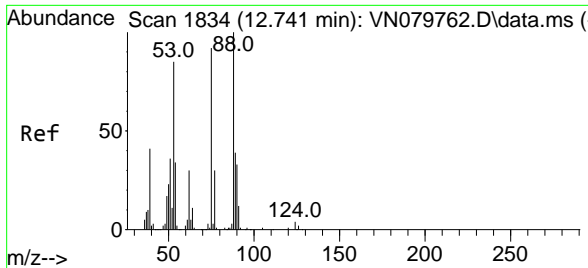


#76  
 1,2,3-Trichloropropane  
 Concen: 25.973 ug/l  
 RT: 12.853 min Scan# 1853  
 Delta R.T. -0.141 min  
 Lab File: VN080076.D  
 Acq: 13 Nov 2023 19:05

Tgt Ion: 75 Resp: 153252

Ion	Ratio	Lower	Upper
75	100		
77	1.1	84.5	253.5#





#81  
 trans-1,4-Dichloro-2-butene  
 Concen: 70.667 ug/l  
 RT: 12.853 min Scan# 11  
 Delta R.T. 0.118 min  
 Lab File: VN080076.D  
 Acq: 13 Nov 2023 19:05

Instrument :  
 MSVOA\_N  
 ClientSampleId :  
 PB157075ZHE#17

Tgt Ion: 75 Resp: 153252  
 Ion Ratio Lower Upper  
 75 100  
 53 0.3 67.4 101.2#  
 89 0.0 38.8 58.2#

