

Data Path : Z:\VOASRV\HPCHEM1\MSVOA N\DATA\VN111419\
 Data File : VN059237.D
 Acq On : 14 Nov 2019 16:28
 Operator : JC/SP
 Sample : K5842-01
 Misc : 5.00mL/MSVOA N/WATER
 ALS Vial : 21 Sample Multiplier: 1

Instrument :
 MSVOA_N
 ClientSampleId :

Quant Time: Nov 15 06:32:12 2019
 Quant Method : Z:\VOASRV\HPCHEM1\MSVOA_N\METHODS\82N110619W.M
 Quant Title : SW846 8260
 QLast Update : Thu Nov 07 04:00:41 2019
 Response via : Initial Calibration

Internal Standards	R.T.	QIon	Response	Conc	Units	Dev(Min)
1) Pentafluorobenzene	7.64	168	480404	50.00	ug/l	0.00
34) 1,4-Difluorobenzene	8.57	114	747815	50.00	ug/l	0.00
63) Chlorobenzene-d5	11.40	117	647889	50.00	ug/l	0.00
72) 1,4-Dichlorobenzene-d4	13.35	152	234194	50.00	ug/l	0.00

System Monitoring Compounds

33) 1,2-Dichloroethane-d4	8.01	65	300579	50.90	ug/l	0.00
Spiked Amount	50.000		Recovery	=	101.80%	
35) Dibromofluoromethane	7.57	113	233697	52.34	ug/l	0.00
Spiked Amount	50.000		Recovery	=	104.68%	
50) Toluene-d8	10.08	98	901374	51.25	ug/l	0.00
Spiked Amount	50.000		Recovery	=	102.50%	
62) 4-Bromofluorobenzene	12.40	95	290295	45.78	ug/l	0.00
Spiked Amount	50.000		Recovery	=	91.56%	

Target Compounds

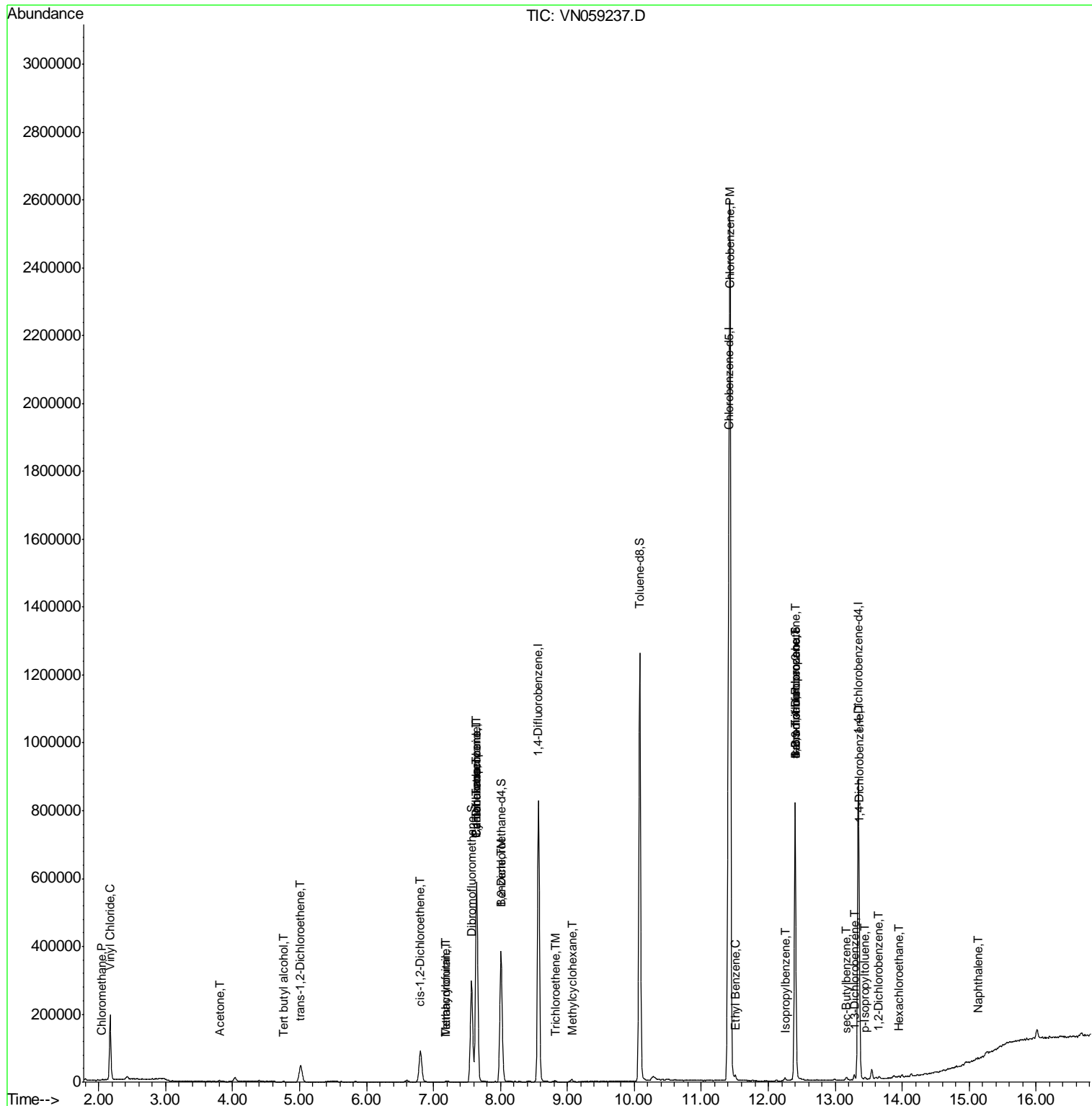
						Qvalue
3) Chloromethane	2.04	50	1580	0.240	ug/l	91
4) Vinyl Chloride	2.17	62	181477	28.449	ug/l	99
11) Tert butyl alcohol	4.75	59	699	0.621	ug/l #	72
16) Acetone	3.80	43	4469	1.455	ug/l	98
21) trans-1,2-Dichloroethene	5.01	96	30641	6.370	ug/l	95
27) cis-1,2-Dichloroethene	6.80	96	61802	11.074	ug/l	87
29) Tetrahydrofuran	7.20	42	913	0.355	ug/l #	53
31) Cyclohexane	7.64	56	13350	1.452	ug/l #	16
36) 1,1-Dichloropropene	7.64	75	36398	5.207	ug/l #	50
38) Carbon Tetrachloride	7.64	117	45539	6.546	ug/l #	16
39) Methylcyclohexane	9.06	83	2464	0.304	ug/l	87
40) Benzene	8.02	78	67357	3.200	ug/l	98
41) Methacrylonitrile	7.19	41	721	0.213	ug/l #	100
44) Trichloroethene	8.83	130	1168	0.226	ug/l	92
65) Chlorobenzene	11.43	112	1390872	110.125	ug/l	98
67) Ethyl Benzene	11.51	91	10447	0.466	ug/l	98
71) Bromoform	12.40	173	1596	0.433	ug/l #	1
73) Isopropylbenzene	12.25	105	5322	0.312	ug/l	94
76) 1,2,3-Trichloropropane	12.40	75	143963	27.001	ug/l #	100
81) trans-1,4-Dichloro-2-buten	12.40	75	143963	71.316	ug/l #	13
85) sec-Butylbenzene	13.17	105	4739	0.292	ug/l #	73
86) p-Isopropyltoluene	13.44	119	3251	0.227	ug/l	97
87) 1,3-Dichlorobenzene	13.28	146	6682	0.912	ug/l	97
88) 1,4-Dichlorobenzene	13.36	146	61405	8.374	ug/l	97
90) Hexachloroethane	13.95	117	2377	0.827	ug/l #	8
91) 1,2-Dichlorobenzene	13.66	146	3388	0.470	ug/l	93
95) Naphthalene	15.13	128	716	3.100	ug/l #	70

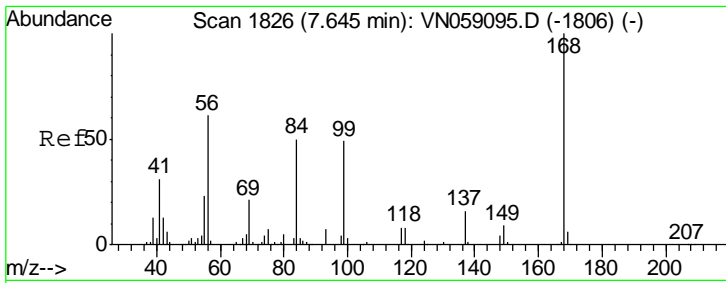
(#) = qualifier out of range (m) = manual integration (+) = signals summed

Data Path : Z:\VOASRV\HPCHEM1\MSVOA N\DATA\VN111419\
 Data File : VN059237.D
 Acq On : 14 Nov 2019 16:28
 Operator : JC/SP
 Sample : K5842-01
 Misc : 5.00mL/MSVOA N/WATER
 ALS Vial : 21 Sample Multiplier: 1

Instrument :
 MSVOA_N
 ClientSampleId :

Quant Time: Nov 15 06:32:12 2019
 Quant Method : Z:\VOASRV\HPCHEM1\MSVOA_N\METHODS\82N110619W.M
 Quant Title : SW846 8260
 QLast Update : Thu Nov 07 04:00:41 2019
 Response via : Initial Calibration

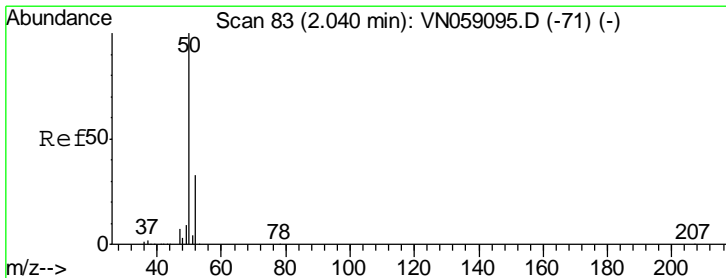
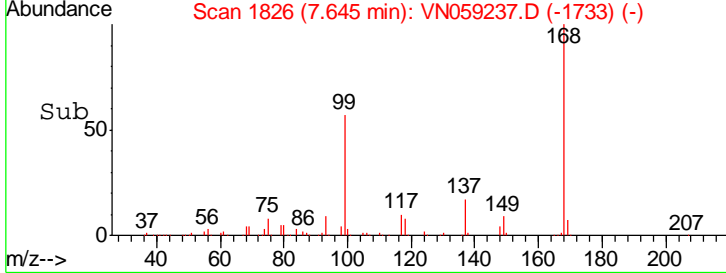
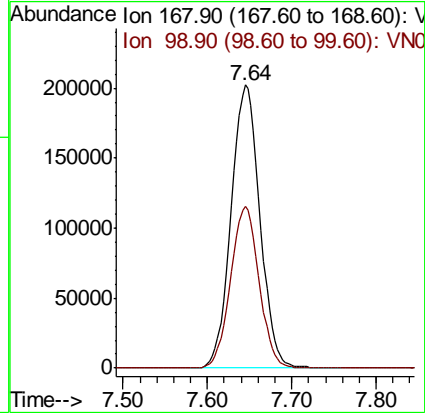
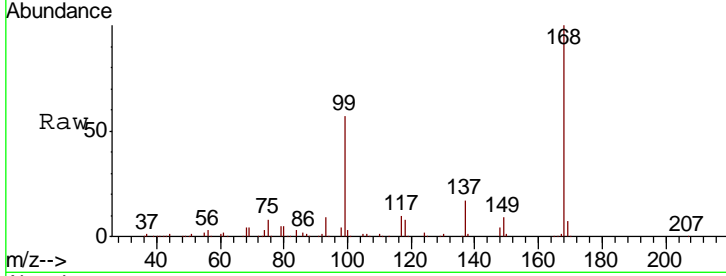




#1
 Pentafluorobenzene
 Concen: 50.000 ug/l
 RT: 7.64 min Scan# 1826
 Delta R.T. -0.00 min
 Lab File: VN059237.D
 Acq: 14 Nov 2019 16:28

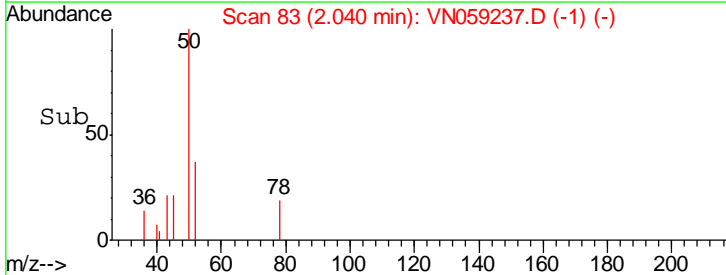
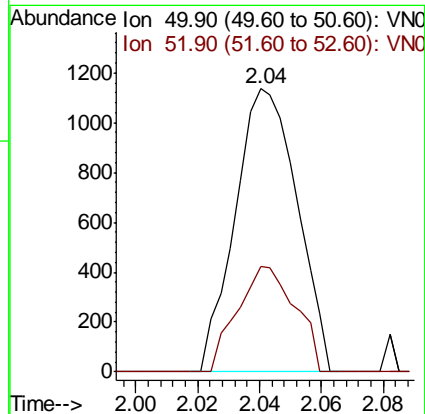
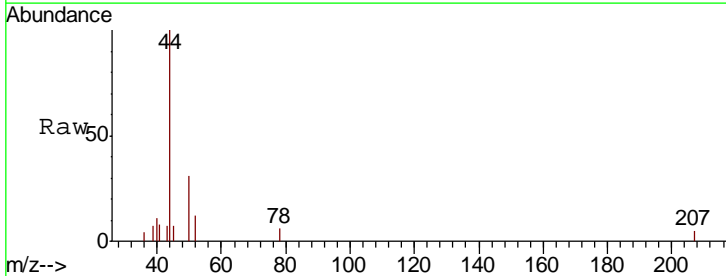
Instrument :
 MSVOA_N
 ClientSampled :

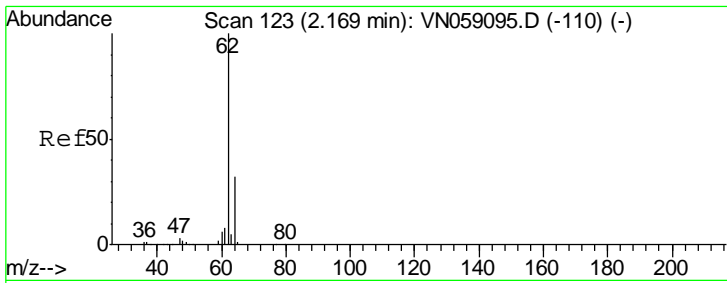
Tgt Ion: 168 Resp: 480404
 Ion Ratio Lower Upper
 168 100
 99 57.1 45.7 68.5



#3
 Chloromethane
 Concen: 0.240 ug/l
 RT: 2.04 min Scan# 83
 Delta R.T. -0.00 min
 Lab File: VN059237.D
 Acq: 14 Nov 2019 16:28

Tgt Ion: 50 Resp: 1580
 Ion Ratio Lower Upper
 50 100
 52 37.3 26.0 39.0

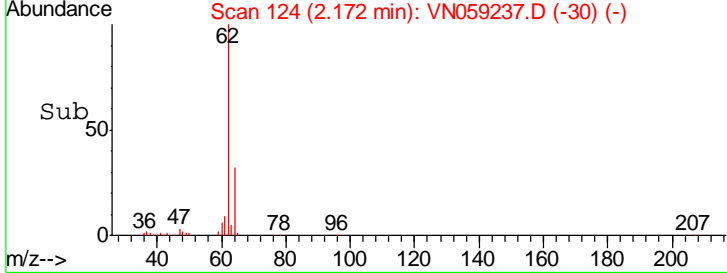
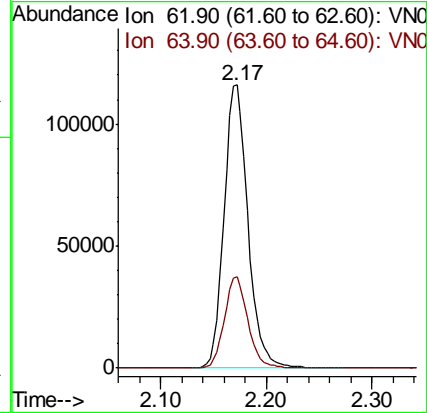
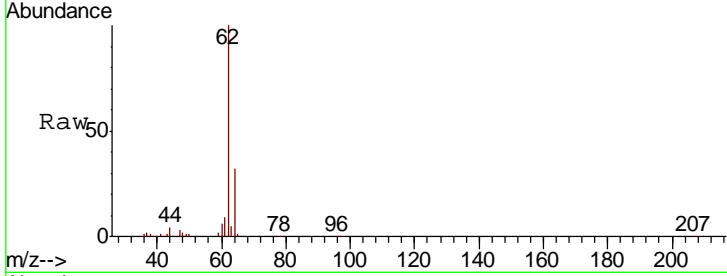




#4
 Vinyl Chloride
 Concen: 28.449 ug/l
 RT: 2.17 min Scan# 124
 Delta R.T. 0.00 min
 Lab File: VN059237.D
 Acq: 14 Nov 2019 16:28

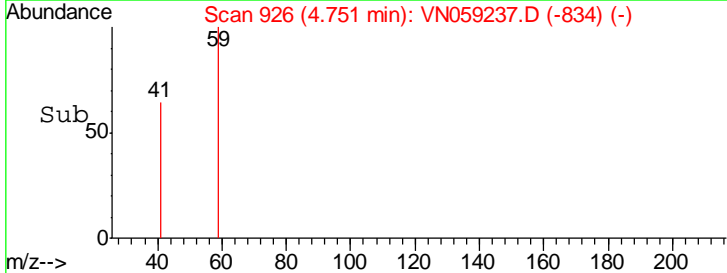
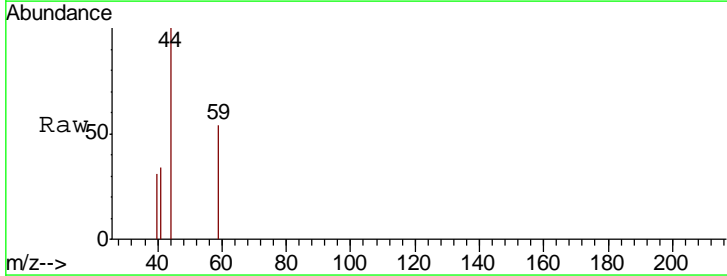
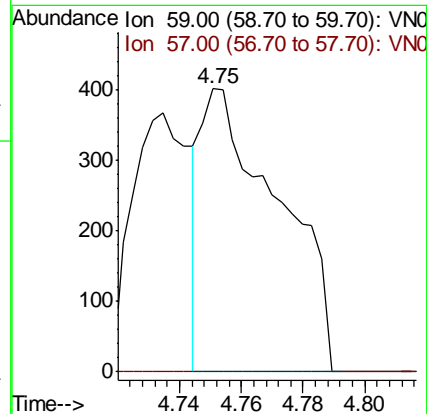
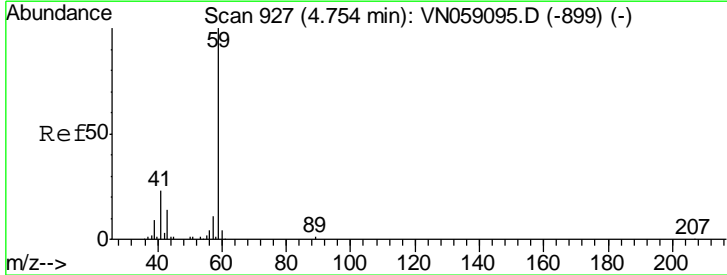
Instrument :
 MSVOA_N
 ClientSampled :

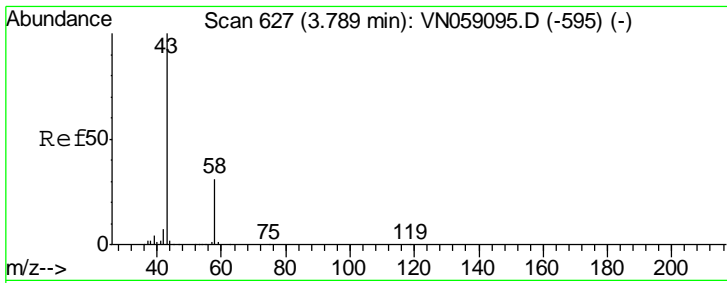
Tgt Ion	Resp	Lower	Upper
62	181477		
64	32.2	25.4	38.2



#11
 Tert butyl alcohol
 Concen: 0.621 ug/l
 RT: 4.75 min Scan# 926
 Delta R.T. -0.00 min
 Lab File: VN059237.D
 Acq: 14 Nov 2019 16:28

Tgt Ion	Resp	Lower	Upper
59	699		
57	0.0	8.3	12.5#

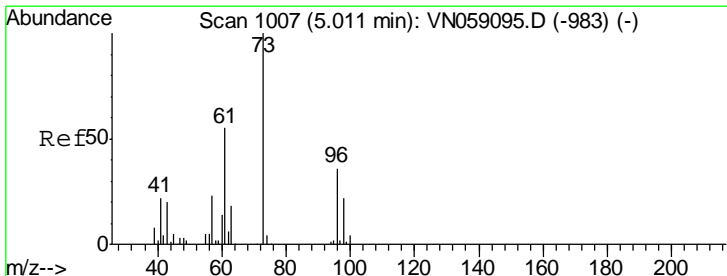
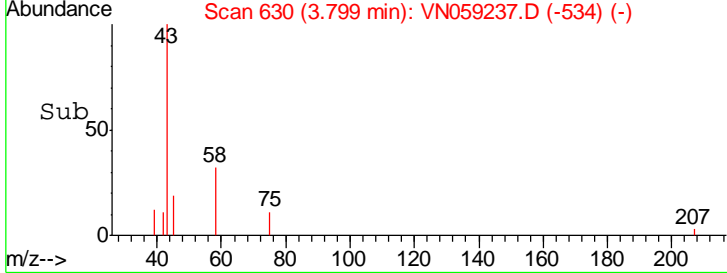
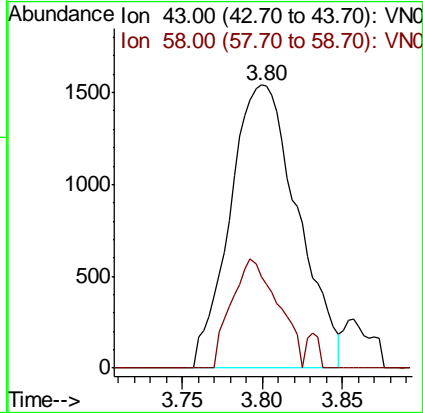
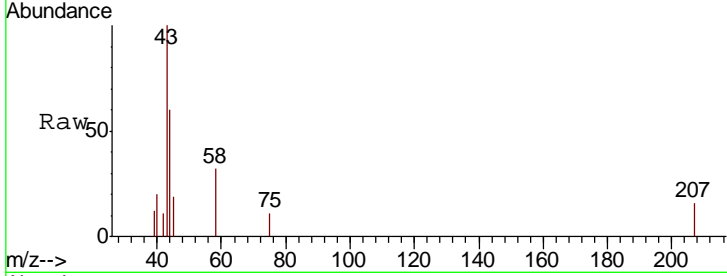




#16
 Acetone
 Concen: 1.455 ug/l
 RT: 3.80 min Scan# 630
 Delta R.T. 0.01 min
 Lab File: VN059237.D
 Acq: 14 Nov 2019 16:28

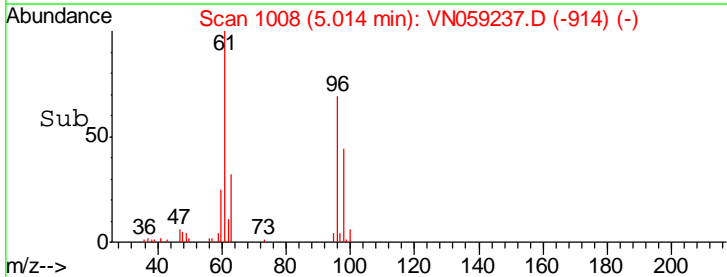
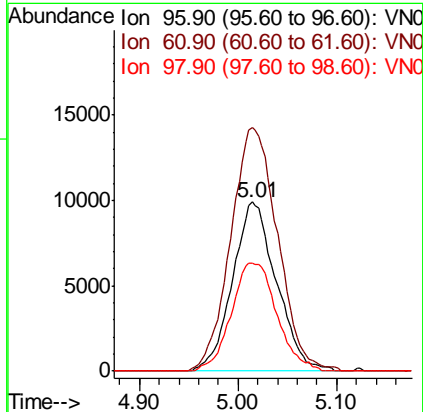
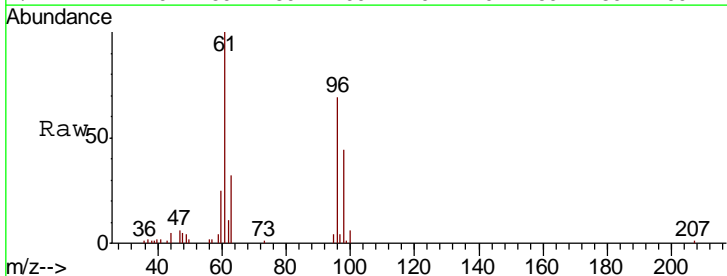
Instrument :
 MSVOA_N
 ClientSampled :

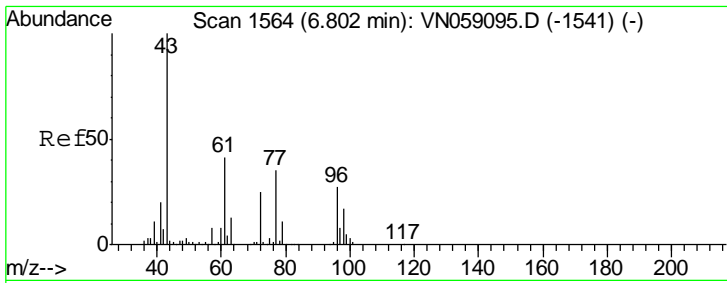
Tgt Ion	Resp	Lower	Upper
43	100		
58	32.3	24.9	37.3



#21
 trans-1,2-Dichloroethene
 Concen: 6.370 ug/l
 RT: 5.01 min Scan# 1008
 Delta R.T. 0.00 min
 Lab File: VN059237.D
 Acq: 14 Nov 2019 16:28

Tgt Ion	Resp	Lower	Upper
96	100		
61	143.9	122.6	183.8
98	63.8	50.3	75.5

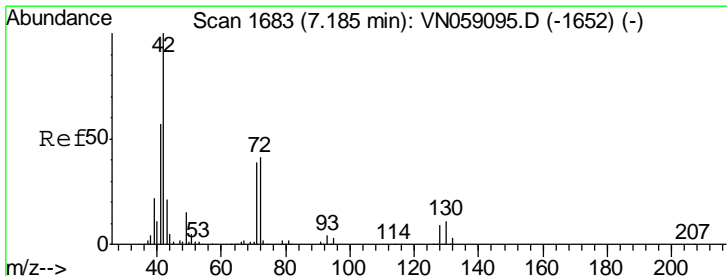
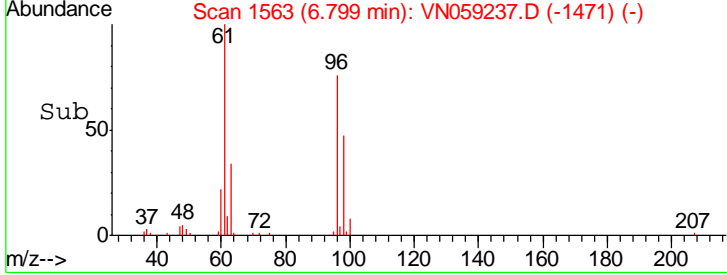
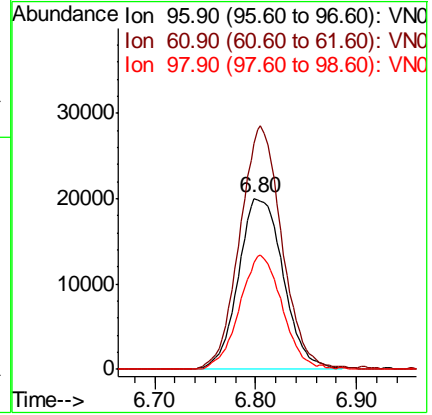
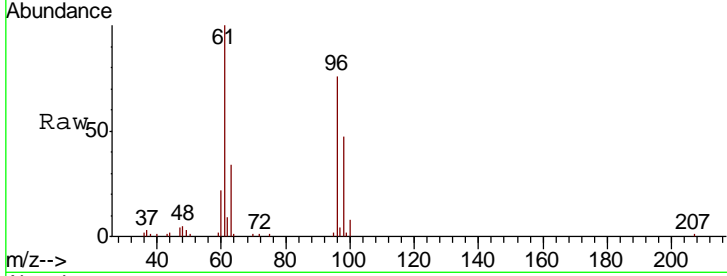




#27
 cis-1,2-Dichloroethene
 Concen: 11.074 ug/l
 RT: 6.80 min Scan# 1563
 Delta R.T. -0.00 min
 Lab File: VN059237.D
 Acq: 14 Nov 2019 16:28

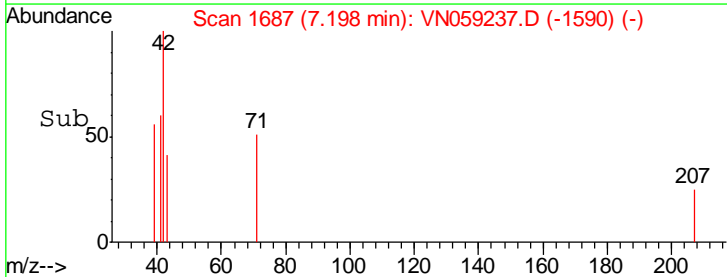
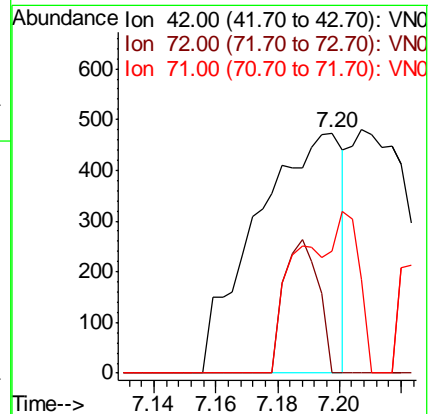
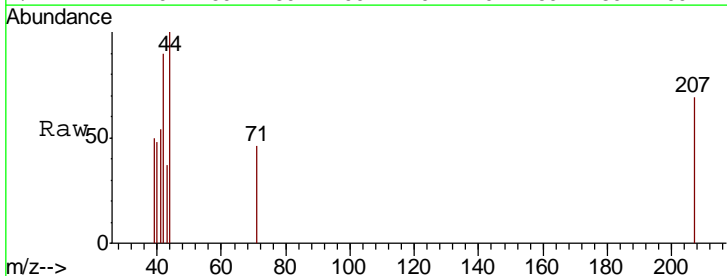
Instrument :
 MSVOA_N
 ClientSampled :

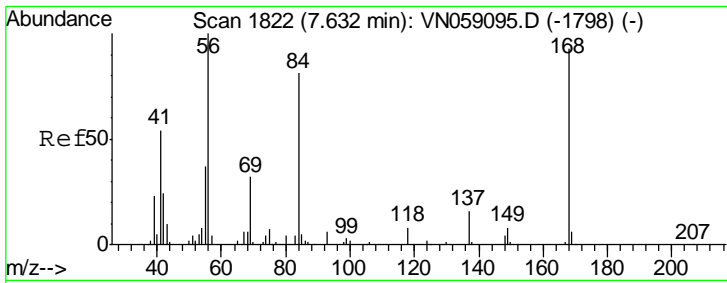
Tgt Ion	Resp	Lower	Upper
96	61802		
Ion Ratio			
96	100		
61	133.8	0.0	311.6
98	63.3	0.0	129.8



#29
 Tetrahydrofuran
 Concen: 0.355 ug/l
 RT: 7.20 min Scan# 1687
 Delta R.T. 0.01 min
 Lab File: VN059237.D
 Acq: 14 Nov 2019 16:28

Tgt Ion	Resp	Lower	Upper
42	913		
Ion Ratio			
42	100		
72	0.0	33.1	49.7#
71	22.1	30.9	46.3#

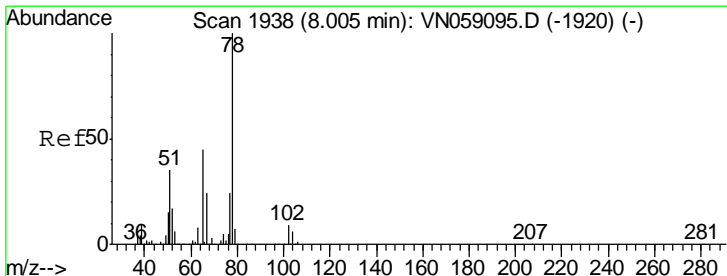
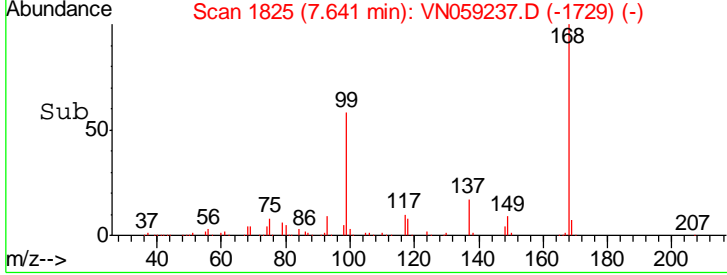
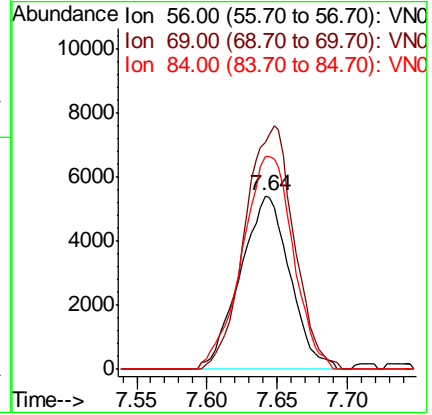
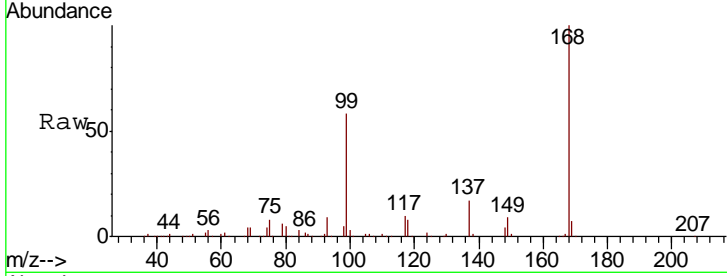




#31
 Cyclohexane
 Concen: 1.452 ug/l
 RT: 7.64 min Scan# 1825
 Delta R.T. 0.01 min
 Lab File: VN059237.D
 Acq: 14 Nov 2019 16:28

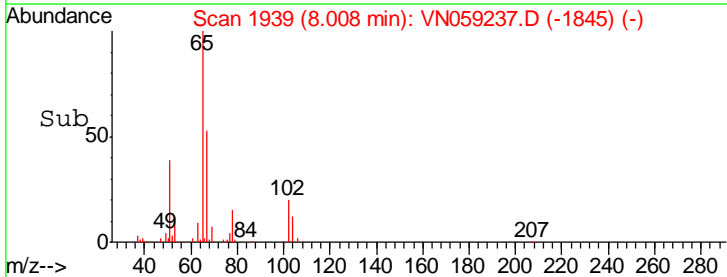
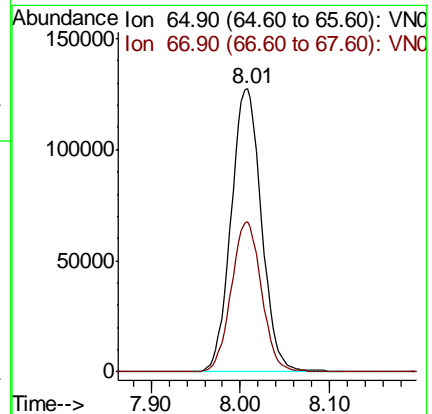
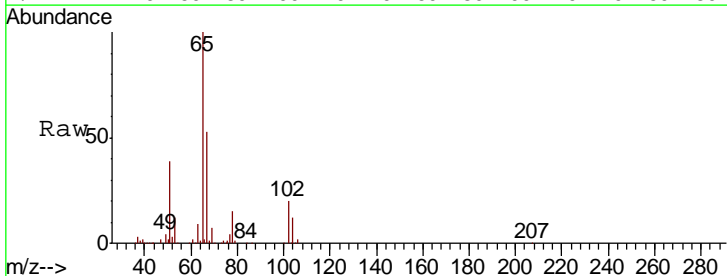
Instrument :
 MSVOA_N
 ClientSampled :

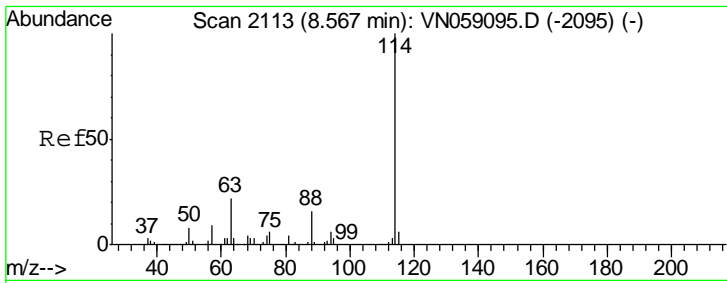
Tgt Ion	Resp	Lower	Upper
56	13350		
69	131.0	25.8	38.8#
84	122.6	65.0	97.4#



#33
 1,2-Dichloroethane-d4
 Concen: 50.899 ug/l
 RT: 8.01 min Scan# 1939
 Delta R.T. 0.00 min
 Lab File: VN059237.D
 Acq: 14 Nov 2019 16:28

Tgt Ion	Resp	Lower	Upper
65	300579		
67	52.7	0.0	107.4

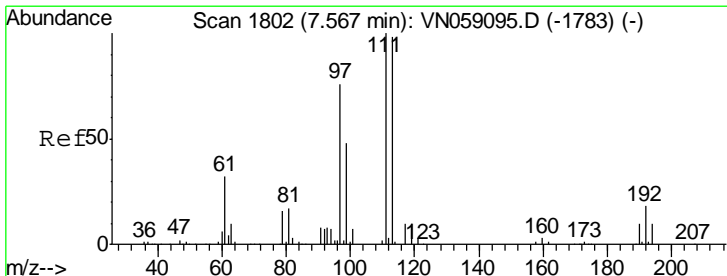
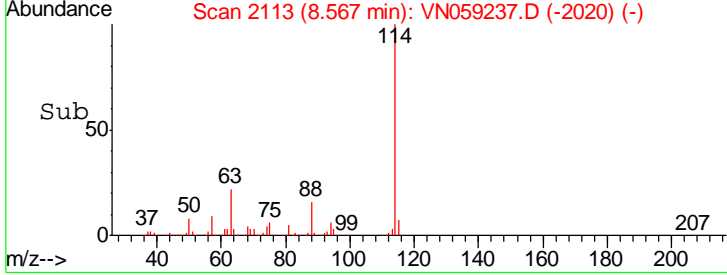
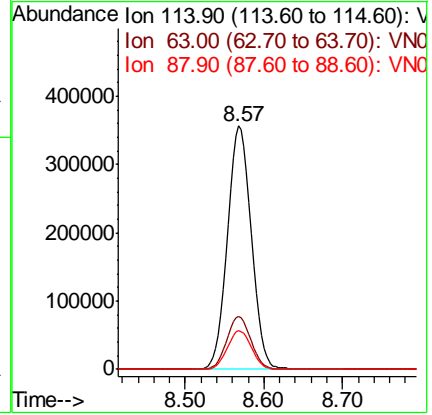
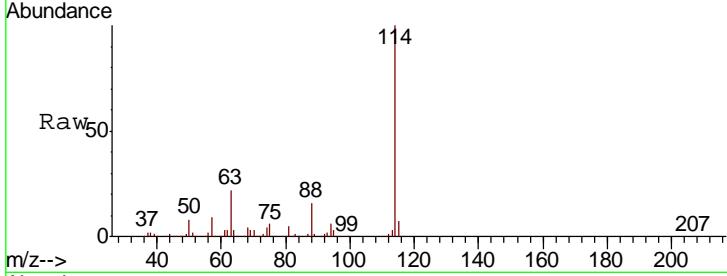




#34
 1,4-Difluorobenzene
 Concen: 50.000 ug/l
 RT: 8.57 min Scan# 2113
 Delta R.T. -0.00 min
 Lab File: VN059237.D
 Acq: 14 Nov 2019 16:28

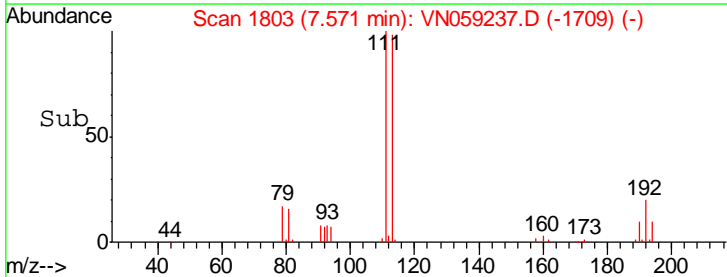
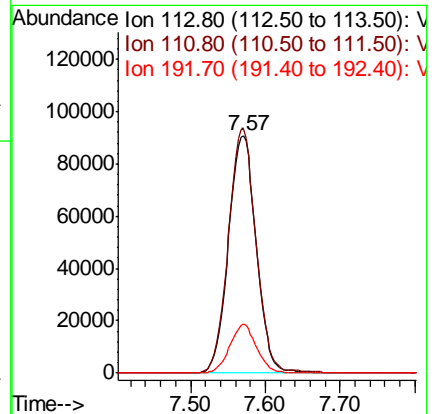
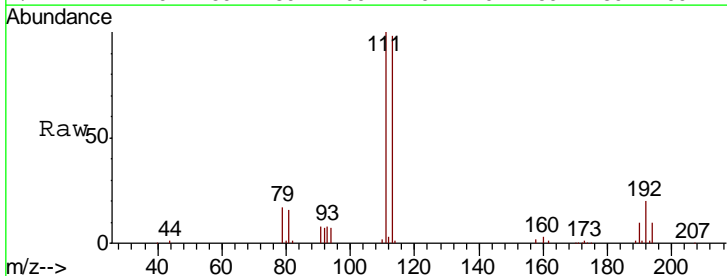
Instrument :
 MSVOA_N
 ClientSampled :

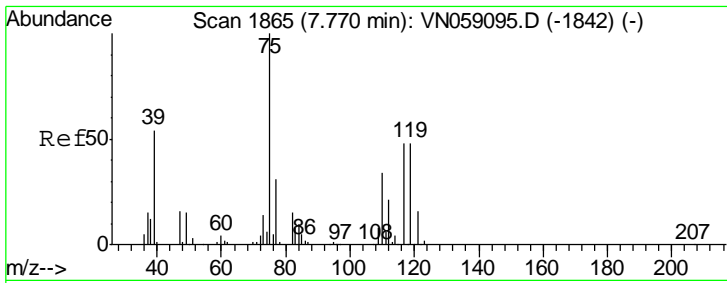
Tgt Ion	Resp	Lower	Upper
114	747815		
63	21.9	0.0	43.4
88	16.0	0.0	32.2



#35
 Dibromofluoromethane
 Concen: 52.338 ug/l
 RT: 7.57 min Scan# 1803
 Delta R.T. 0.00 min
 Lab File: VN059237.D
 Acq: 14 Nov 2019 16:28

Tgt Ion	Resp	Lower	Upper
113	233697		
111	102.0	82.8	124.2
192	19.8	16.1	24.1

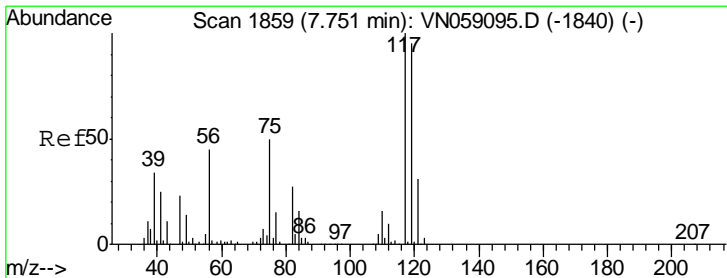
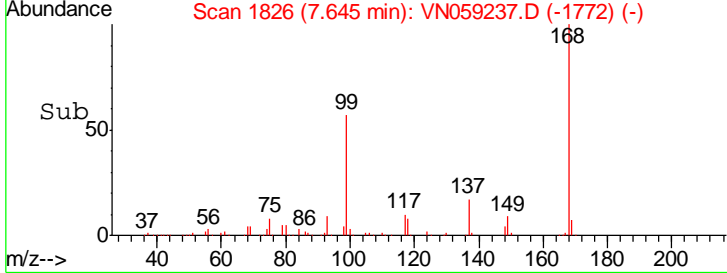
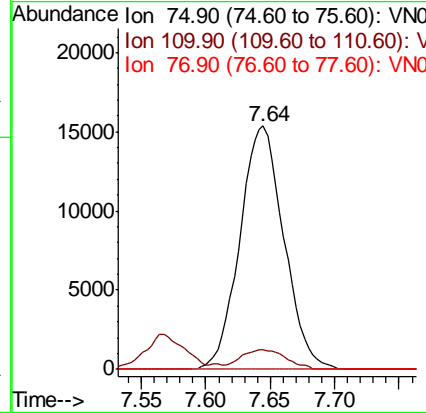
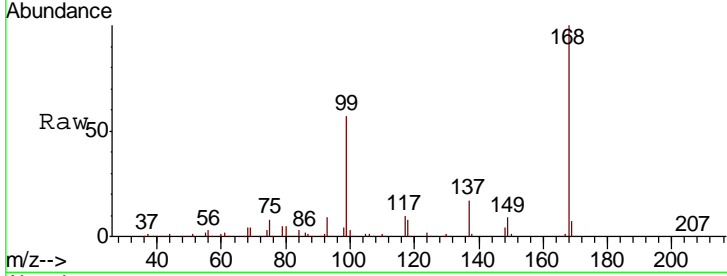




#36
 1,1-Dichloropropene
 Concen: 5.207 ug/l
 RT: 7.64 min Scan# 1826
 Delta R.T. -0.13 min
 Lab File: VN059237.D
 Acq: 14 Nov 2019 16:28

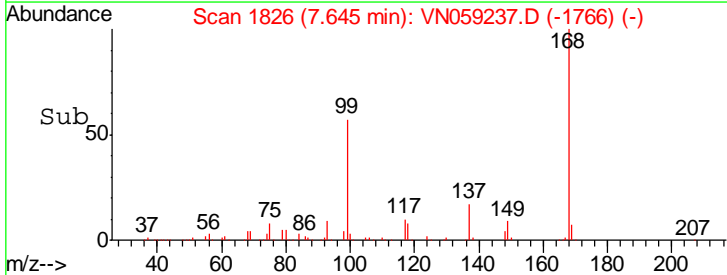
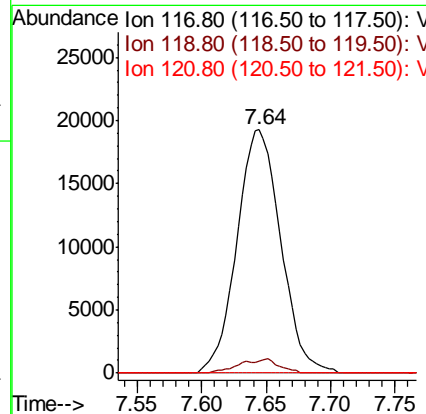
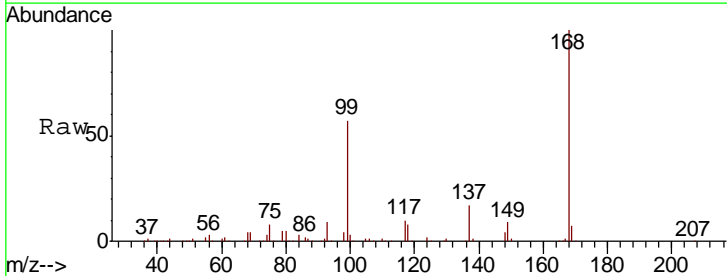
Instrument :
 MSVOA_N
 ClientSampled :

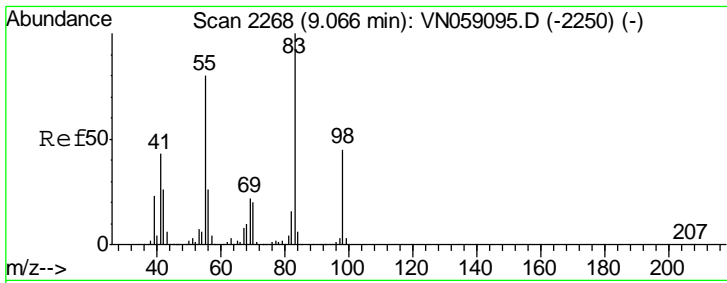
Tgt Ion	Resp	Lower	Upper
75	100		
110	8.5	17.1	51.2#
77	0.0	24.8	37.2#



#38
 Carbon Tetrachloride
 Concen: 6.546 ug/l
 RT: 7.64 min Scan# 1826
 Delta R.T. -0.11 min
 Lab File: VN059237.D
 Acq: 14 Nov 2019 16:28

Tgt Ion	Resp	Lower	Upper
117	100		
119	5.0	75.6	113.4#
121	0.0	24.6	36.8#

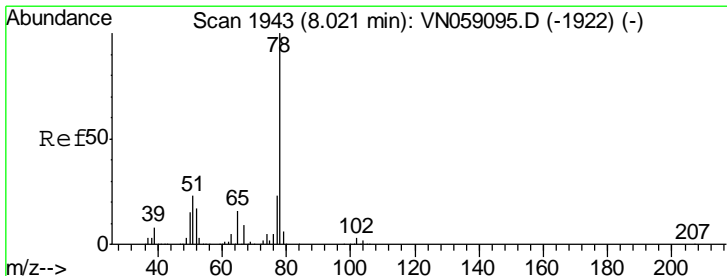
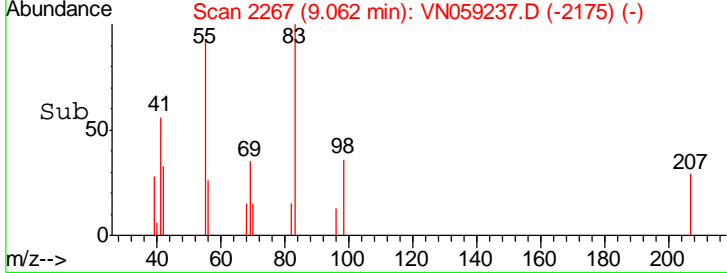
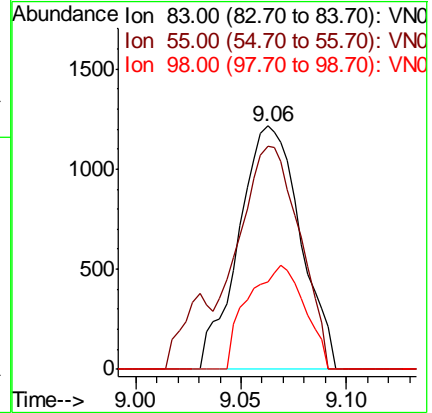
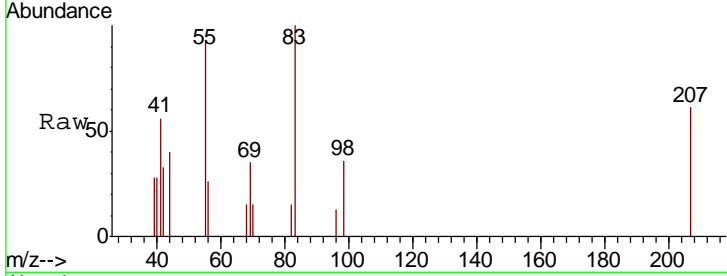




#39
 Methylcyclohexane
 Concen: 0.304 ug/l
 RT: 9.06 min Scan# 2267
 Delta R.T. -0.00 min
 Lab File: VN059237.D
 Acq: 14 Nov 2019 16:28

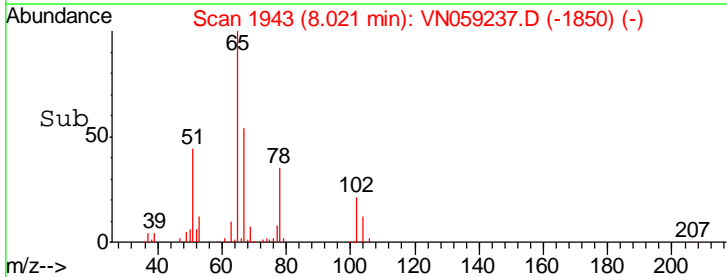
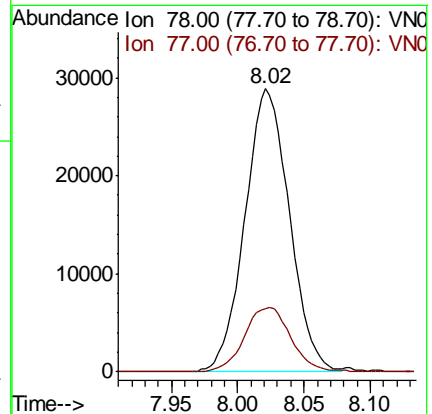
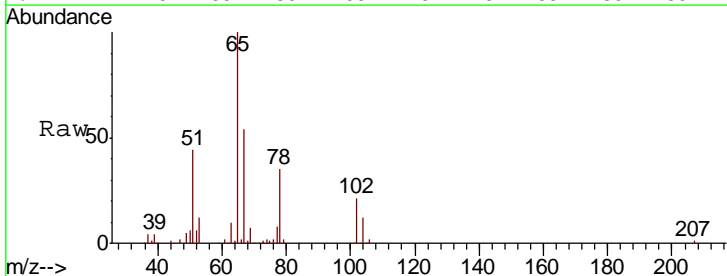
Instrument :
 MSVOA_N
 ClientSampled :

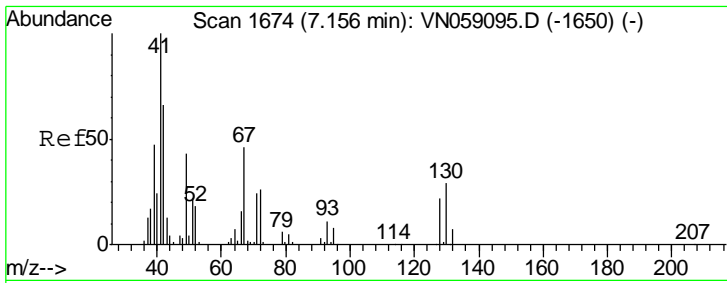
Tgt Ion	Resp	Lower	Upper
83	100		
55	91.6	63.9	95.9
98	35.9	35.6	53.4



#40
 Benzene
 Concen: 3.200 ug/l
 RT: 8.02 min Scan# 1943
 Delta R.T. -0.00 min
 Lab File: VN059237.D
 Acq: 14 Nov 2019 16:28

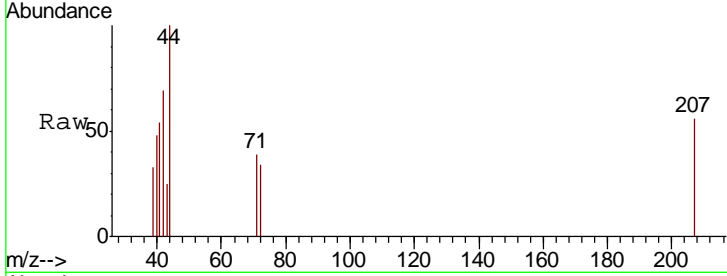
Tgt Ion	Resp	Lower	Upper
78	100		
77	22.5	18.8	28.2





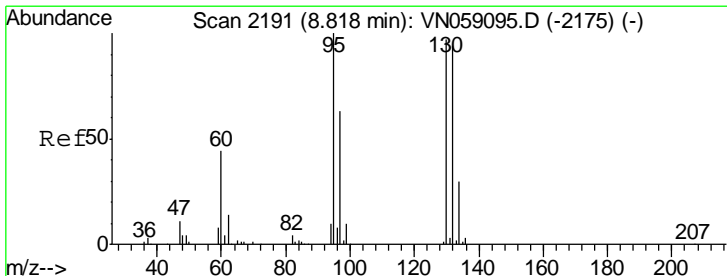
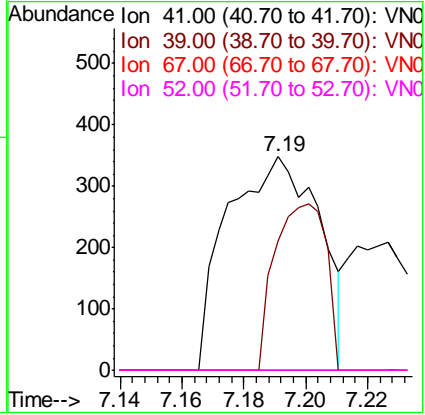
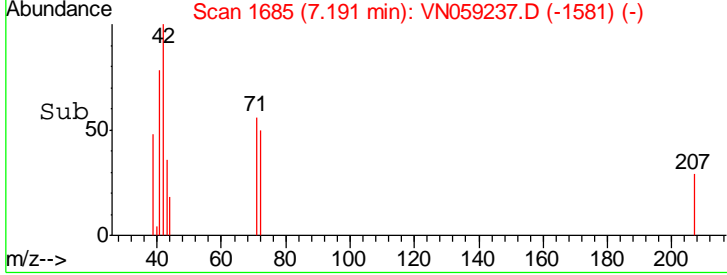
#41
 Methacrylonitrile
 Concen: 0.213 ug/l
 RT: 7.19 min Scan# 1685
 Delta R.T. 0.04 min
 Lab File: VN059237.D
 Acq: 14 Nov 2019 16:28

Instrument :
 MSVOA_N
 ClientSampled :

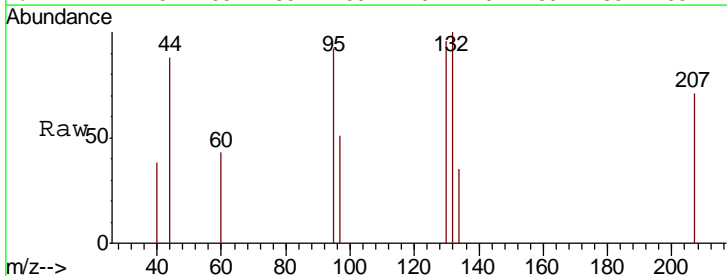


Tgt Ion: 41 Resp: 721

Ion	Ratio	Lower	Upper
41	100		
39	43.1	0.0	0.0#
67	0.0	0.0	0.0
52	0.0	0.0	0.0

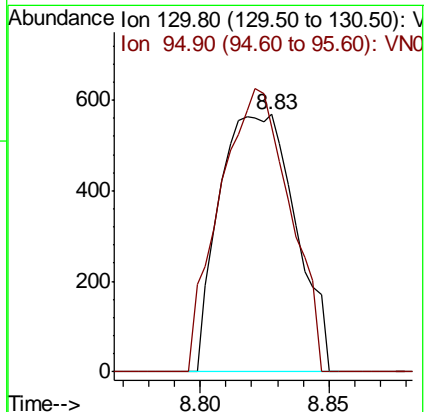
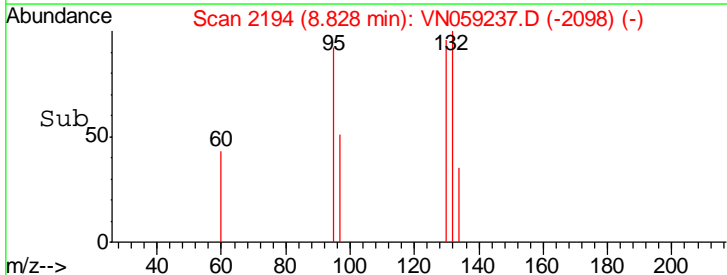


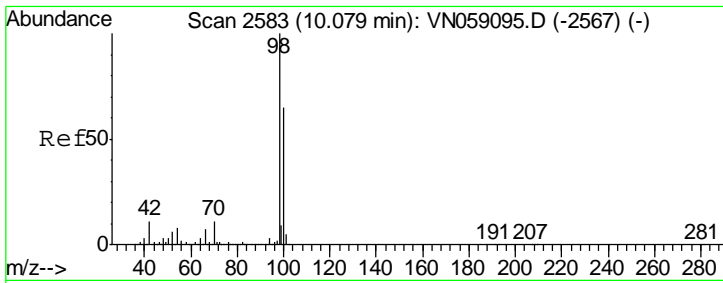
#44
 Trichloroethene
 Concen: 0.226 ug/l
 RT: 8.83 min Scan# 2194
 Delta R.T. 0.01 min
 Lab File: VN059237.D
 Acq: 14 Nov 2019 16:28



Tgt Ion: 130 Resp: 1168

Ion	Ratio	Lower	Upper
130	100		
95	95.3	0.0	206.4

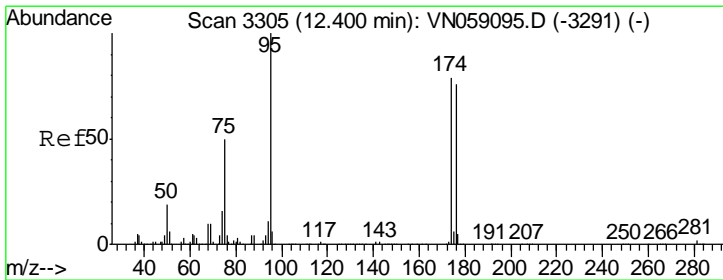
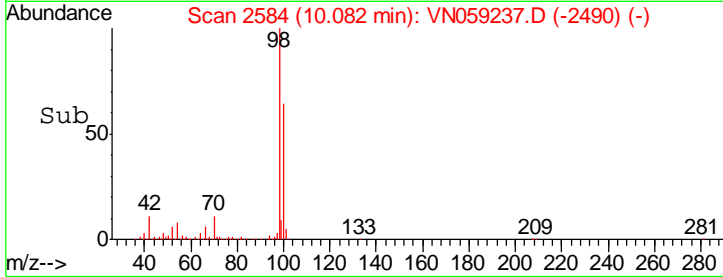
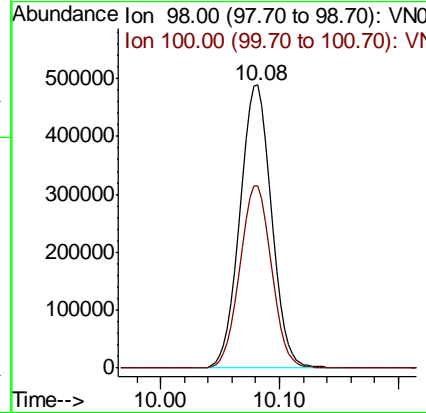
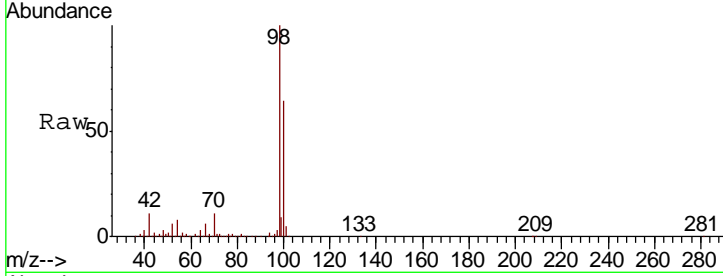




#50
 Toluene-d8
 Concen: 51.249 ug/l
 RT: 10.08 min Scan# 2584
 Delta R.T. 0.00 min
 Lab File: VN059237.D
 Acq: 14 Nov 2019 16:28

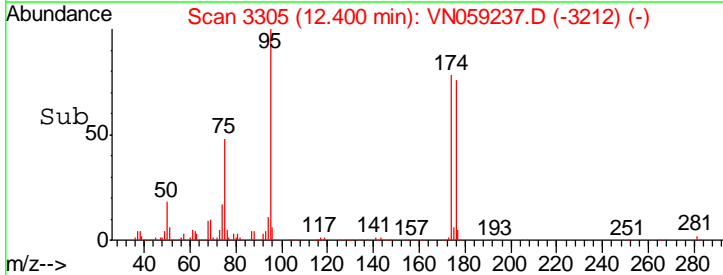
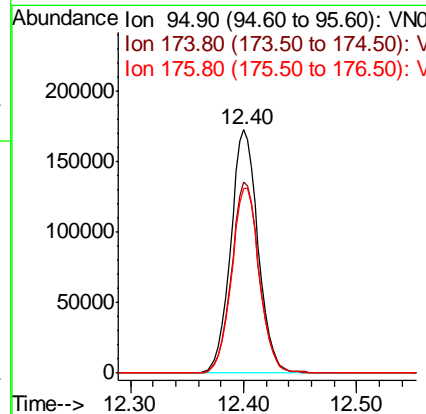
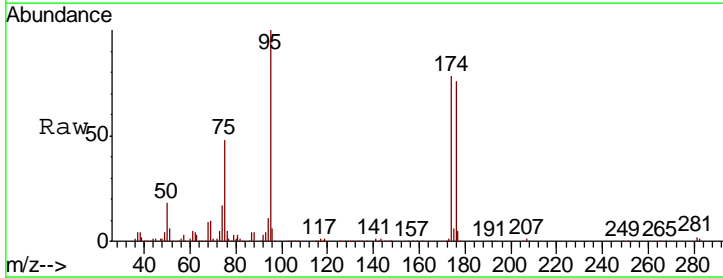
Instrument : MSVOA_N
 ClientSampled :

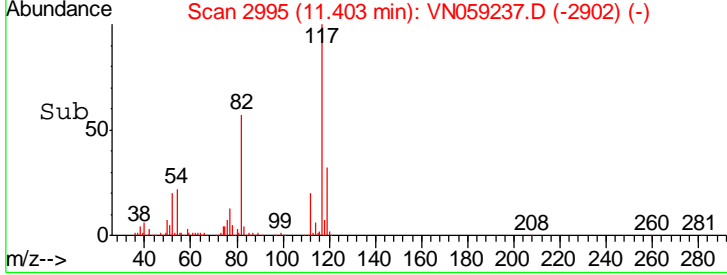
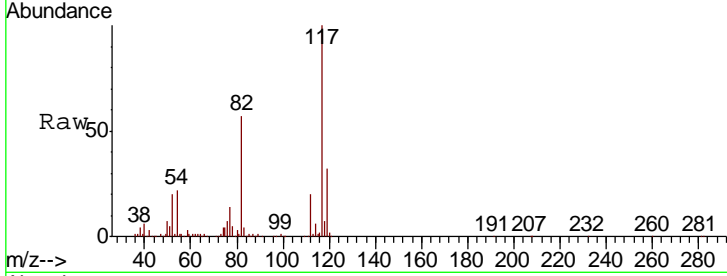
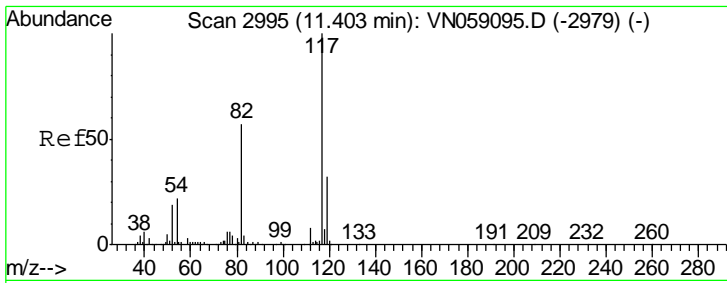
Tgt Ion	Resp	Lower	Upper
98	100		
100	64.7	52.2	78.2



#62
 4-Bromofluorobenzene
 Concen: 45.777 ug/l
 RT: 12.40 min Scan# 3305
 Delta R.T. -0.00 min
 Lab File: VN059237.D
 Acq: 14 Nov 2019 16:28

Tgt Ion	Resp	Lower	Upper
95	100		
174	79.0	0.0	158.2
176	77.2	0.0	151.8

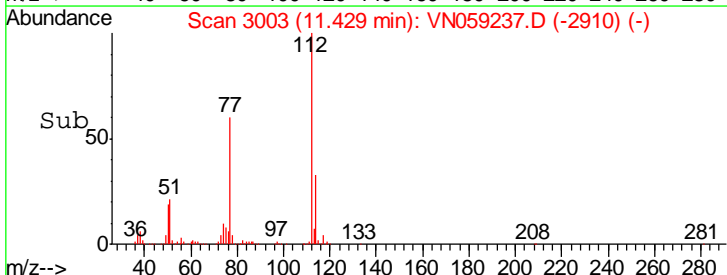
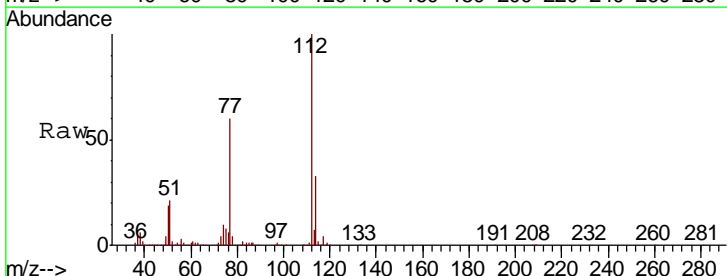
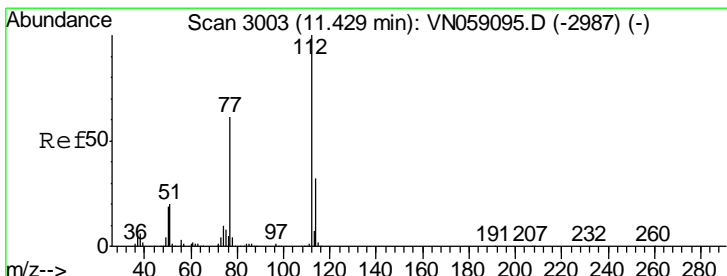
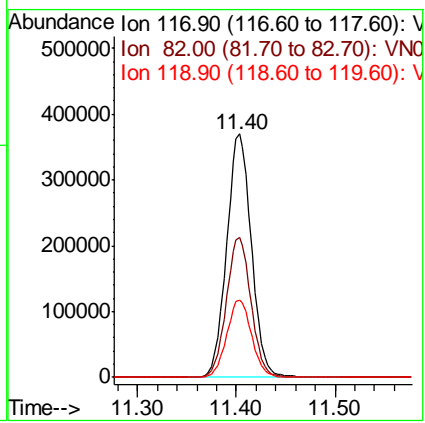




#63
 Chlorobenzene-d5
 Concen: 50.000 ug/l
 RT: 11.40 min Scan# 2995
 Delta R.T. -0.00 min
 Lab File: VN059237.D
 Acq: 14 Nov 2019 16:28

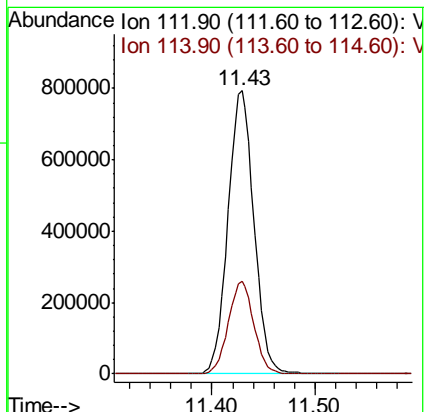
Instrument :
 MSVOA_N
 ClientSampled :

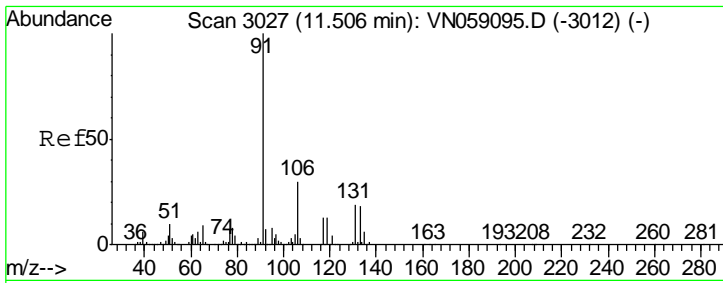
Tgt Ion	Resp	Lower	Upper
117	647889		
82	57.4	45.8	68.8
119	31.8	25.8	38.6



#65
 Chlorobenzene
 Concen: 110.125 ug/l
 RT: 11.43 min Scan# 3003
 Delta R.T. -0.00 min
 Lab File: VN059237.D
 Acq: 14 Nov 2019 16:28

Tgt Ion	Resp	Lower	Upper
112	1390872		
114	32.8	25.2	37.8

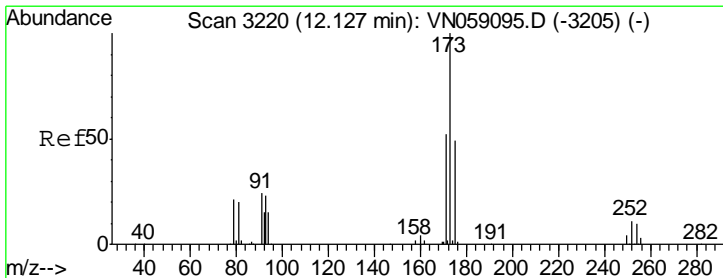
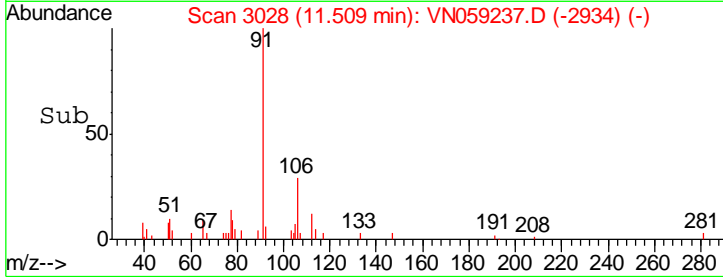
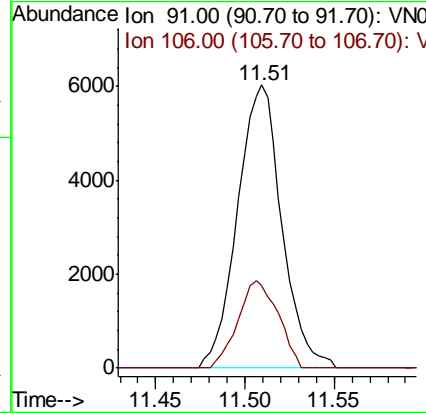
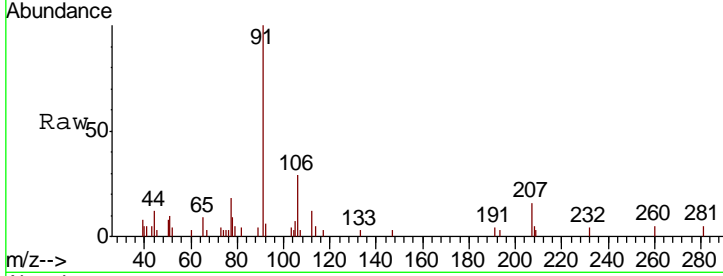




#67
 Ethyl Benzene
 Concen: 0.466 ug/l
 RT: 11.51 min Scan# 3028
 Delta R.T. 0.00 min
 Lab File: VN059237.D
 Acq: 14 Nov 2019 16:28

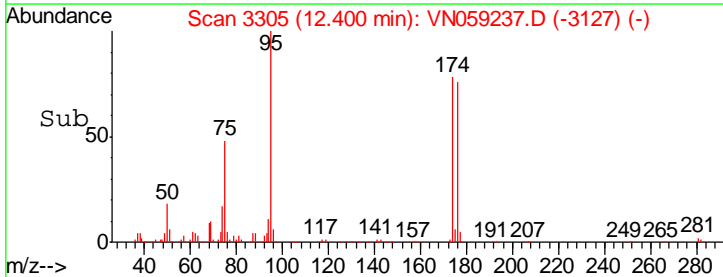
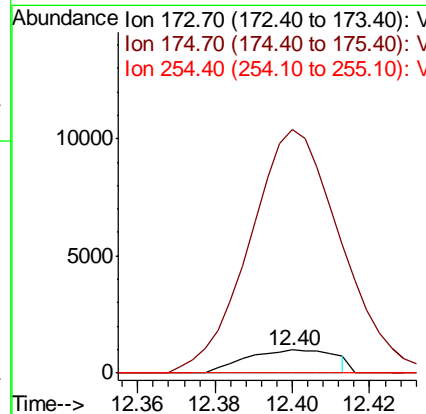
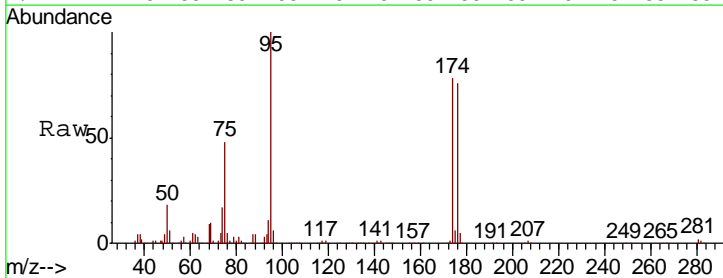
Instrument :
 MSVOA_N
 ClientSampled :

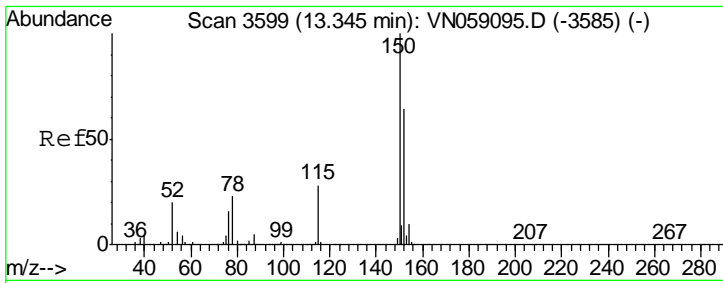
Tgt Ion: 91 Resp: 10447
 Ion Ratio Lower Upper
 91 100
 106 29.1 24.1 36.1



#71
 Bromoform
 Concen: 0.433 ug/l
 RT: 12.40 min Scan# 3305
 Delta R.T. 0.27 min
 Lab File: VN059237.D
 Acq: 14 Nov 2019 16:28

Tgt Ion: 173 Resp: 1596
 Ion Ratio Lower Upper
 173 100
 175 940.4 24.2 72.6#
 254 0.0 0.1 0.1#

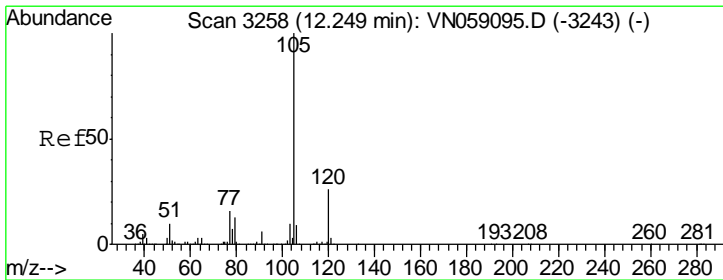
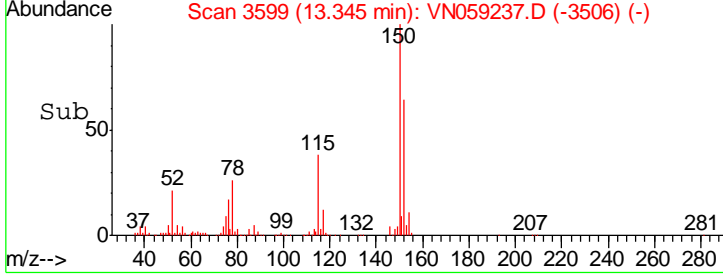
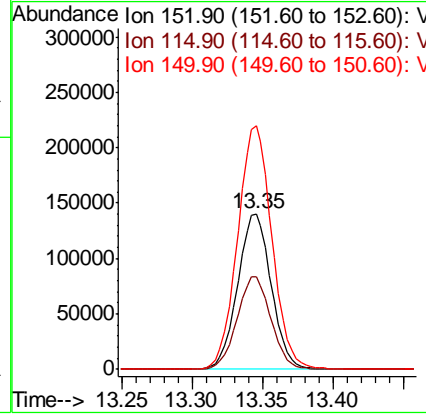
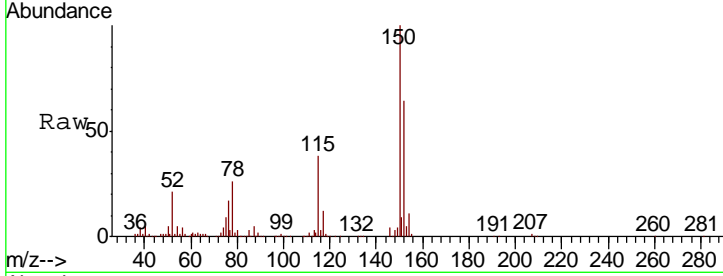




#72
 1,4-Dichlorobenzene-d4
 Concen: 50.000 ug/l
 RT: 13.35 min Scan# 3599
 Delta R.T. -0.00 min
 Lab File: VN059237.D
 Acq: 14 Nov 2019 16:28

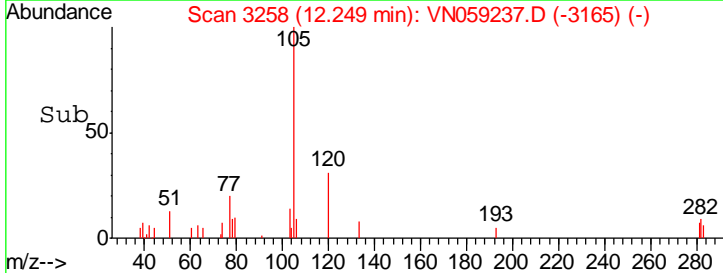
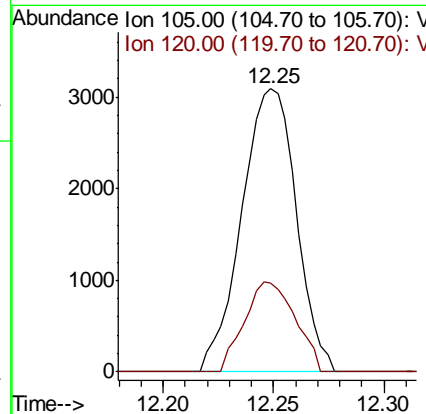
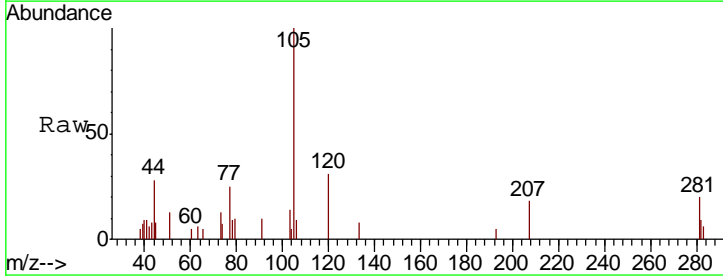
Instrument :
 MSVOA_N
 ClientSampled :

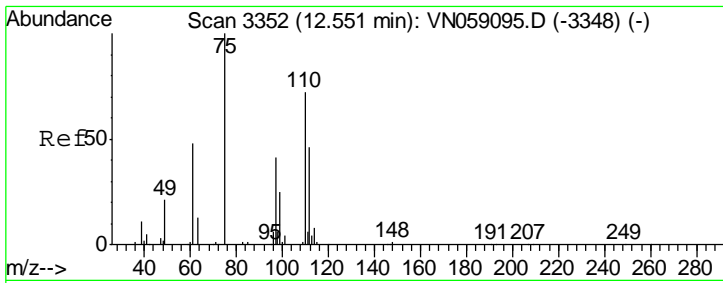
Tgt Ion	Resp	Lower	Upper
152	100		
115	60.1	29.4	88.2
150	159.3	0.0	345.8



#73
 Isopropylbenzene
 Concen: 0.312 ug/l
 RT: 12.25 min Scan# 3258
 Delta R.T. -0.00 min
 Lab File: VN059237.D
 Acq: 14 Nov 2019 16:28

Tgt Ion	Resp	Lower	Upper
105	100		
120	29.5	13.1	39.3

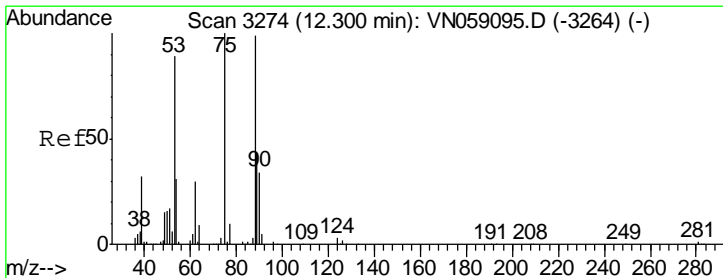
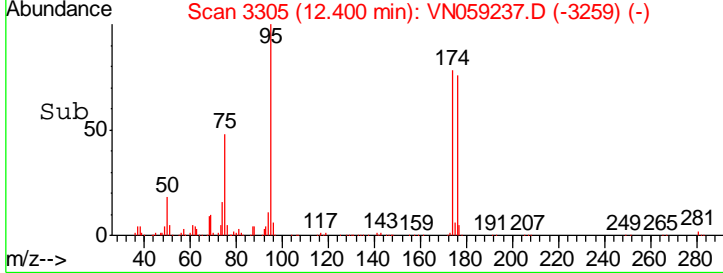
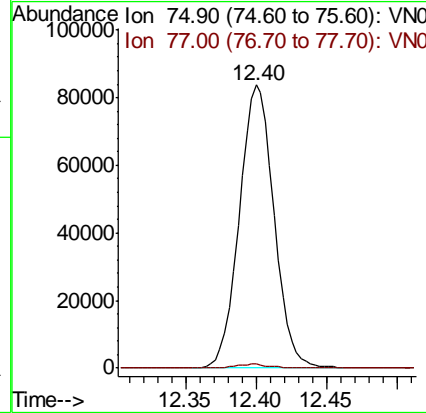
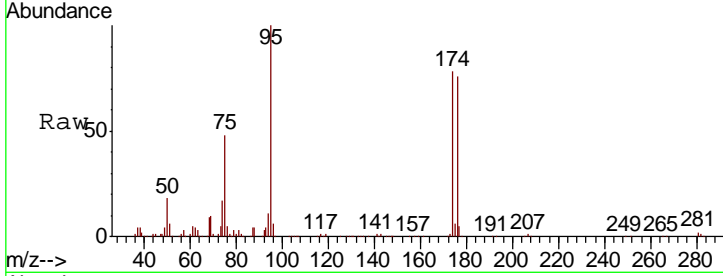




#76
 1,2,3-Trichloropropane
 Concen: 27.001 ug/l
 RT: 12.40 min Scan# 3305
 Delta R.T. -0.15 min
 Lab File: VN059237.D
 Acq: 14 Nov 2019 16:28

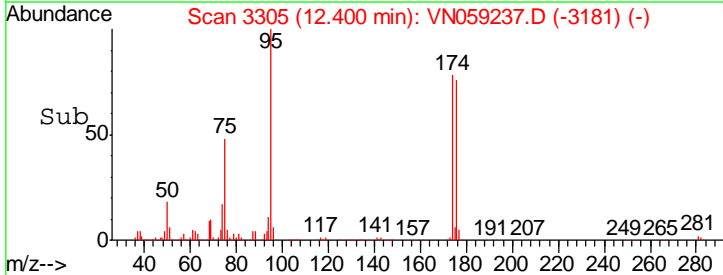
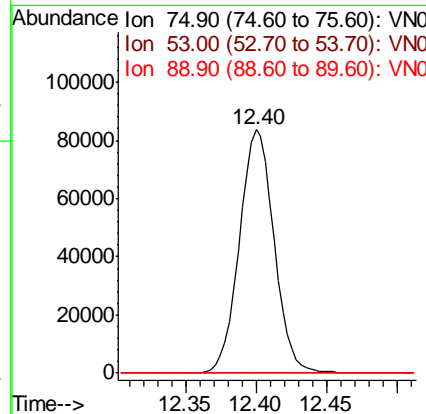
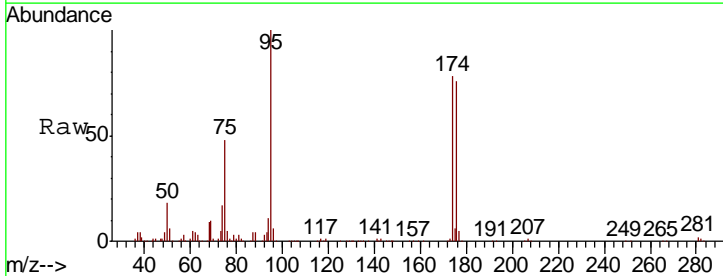
Instrument : MSVOA_N
 Client Sampled :

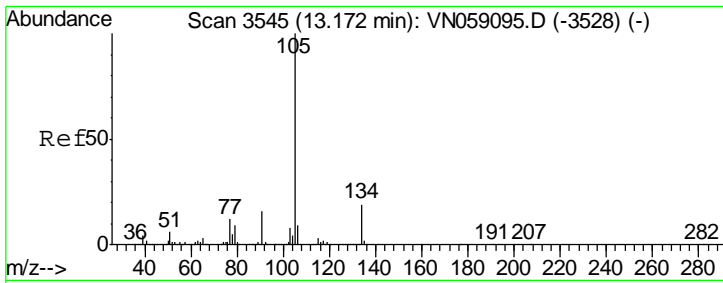
Tgt Ion	Resp	Lower	Upper
75	100		
77	1.4	0.0	0.0#



#81
 trans-1,4-Dichloro-2-butene
 Concen: 71.316 ug/l
 RT: 12.40 min Scan# 3305
 Delta R.T. 0.10 min
 Lab File: VN059237.D
 Acq: 14 Nov 2019 16:28

Tgt Ion	Resp	Lower	Upper
75	100		
53	0.0	72.2	108.2#
89	0.0	35.8	53.8#

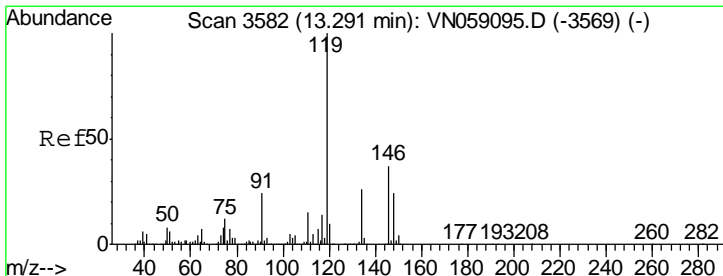
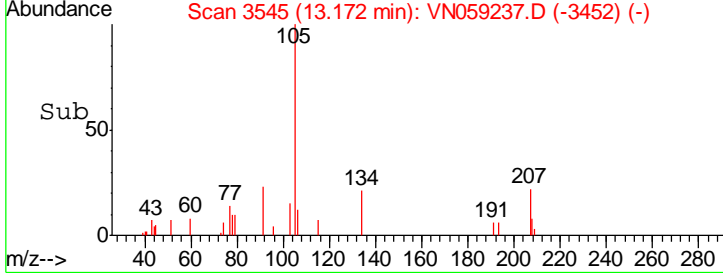
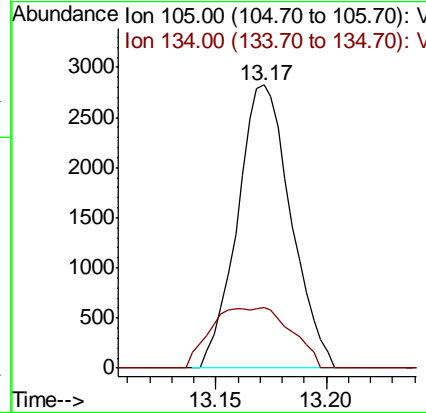
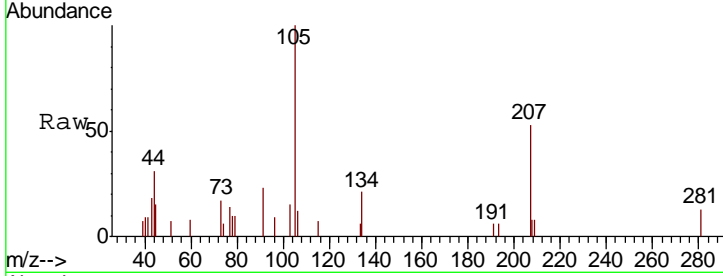




#85
 sec-Butylbenzene
 Concen: 0.292 ug/l
 RT: 13.17 min Scan# 3545
 Delta R.T. -0.00 min
 Lab File: VN059237.D
 Acq: 14 Nov 2019 16:28

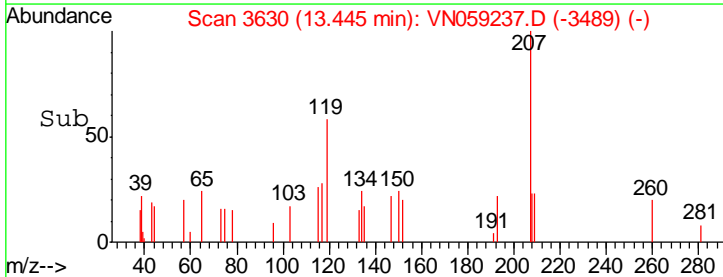
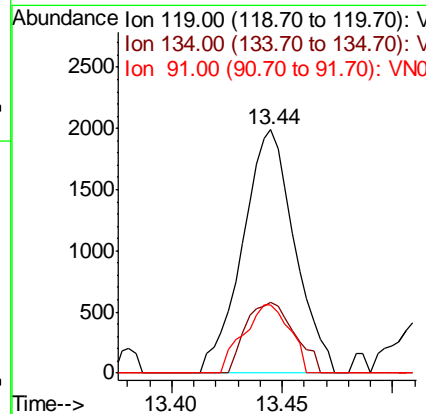
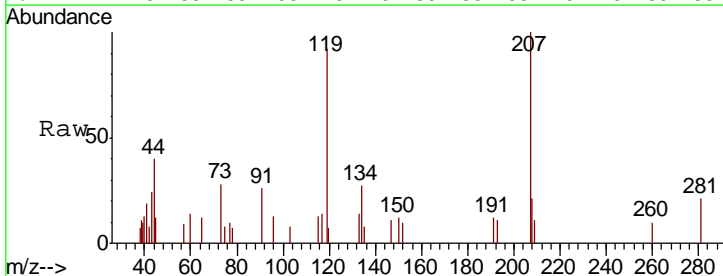
Instrument : MSVOA_N
 ClientSampled :

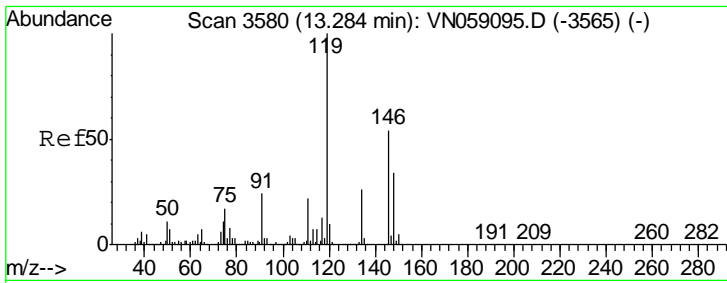
Tgt Ion	Resp	Lower	Upper
105	100		
134	31.7	9.7	29.1#



#86
 p-Isopropyltoluene
 Concen: 0.227 ug/l
 RT: 13.44 min Scan# 3630
 Delta R.T. 0.15 min
 Lab File: VN059237.D
 Acq: 14 Nov 2019 16:28

Tgt Ion	Resp	Lower	Upper
119	100		
134	27.3	13.0	38.9
91	25.0	11.7	35.1

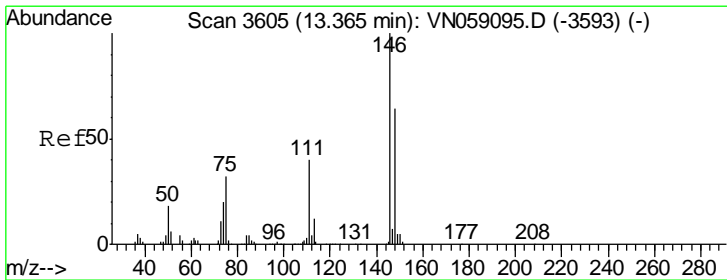
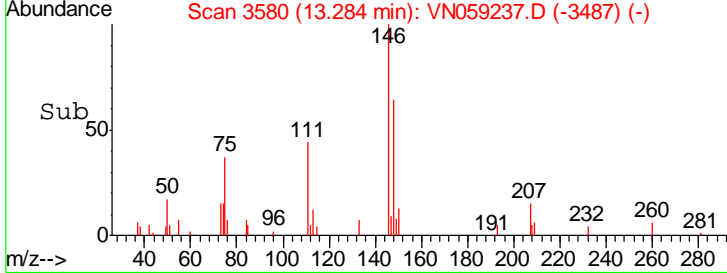
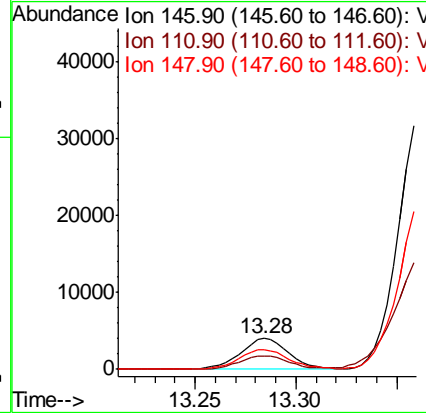
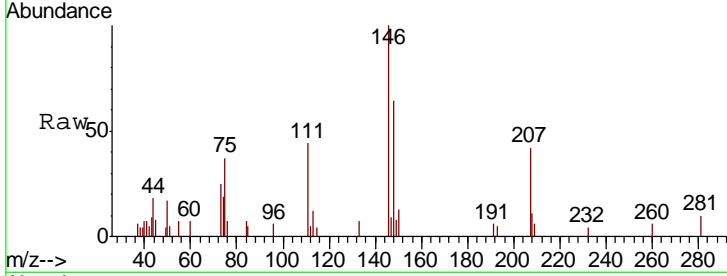




#87
 1,3-Dichlorobenzene
 Concen: 0.912 ug/l
 RT: 13.28 min Scan# 3580
 Delta R.T. -0.00 min
 Lab File: VN059237.D
 Acq: 14 Nov 2019 16:28

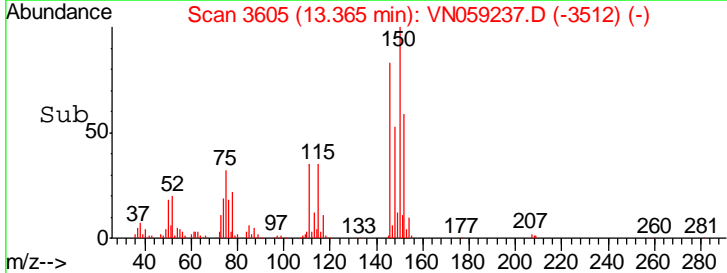
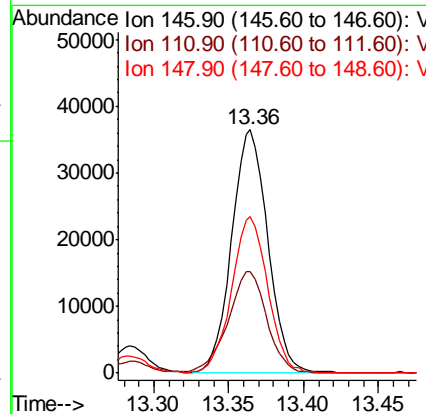
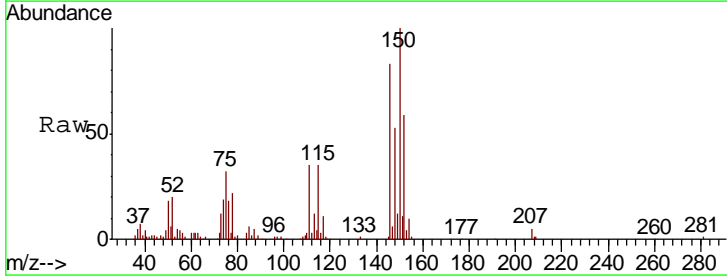
Instrument :
 MSVOA_N
 ClientSampled :

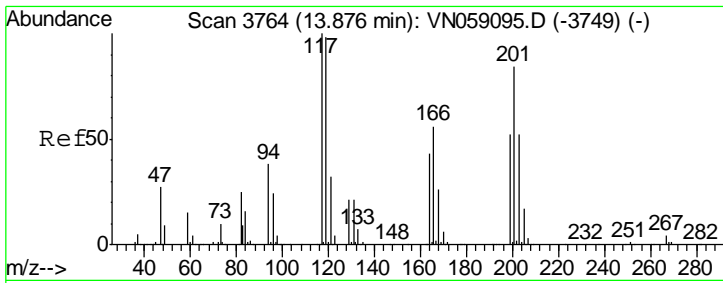
Tgt Ion	Resp	Lower	Upper
146	6682		
111	44.3	20.4	61.3
148	66.1	32.2	96.6



#88
 1,4-Dichlorobenzene
 Concen: 8.374 ug/l
 RT: 13.36 min Scan# 3605
 Delta R.T. -0.00 min
 Lab File: VN059237.D
 Acq: 14 Nov 2019 16:28

Tgt Ion	Resp	Lower	Upper
146	61405		
111	44.9	20.3	60.9
148	64.3	31.9	95.7

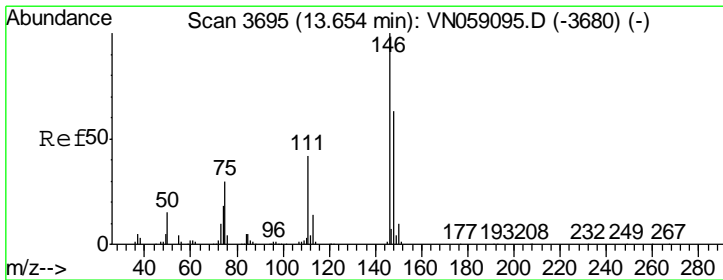
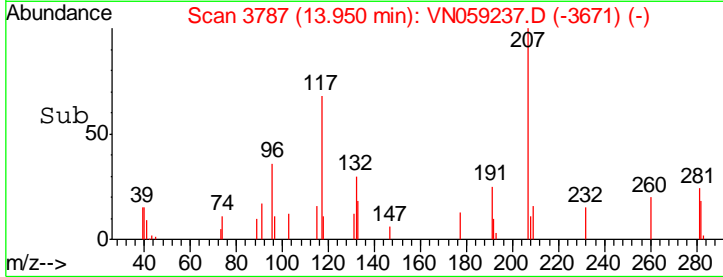
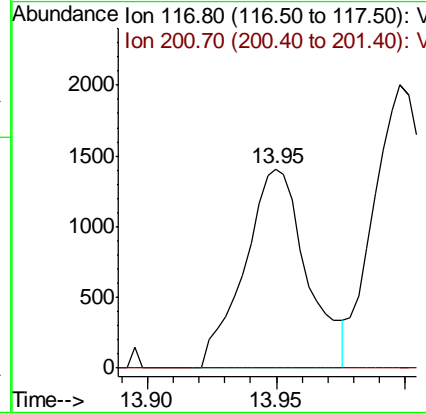
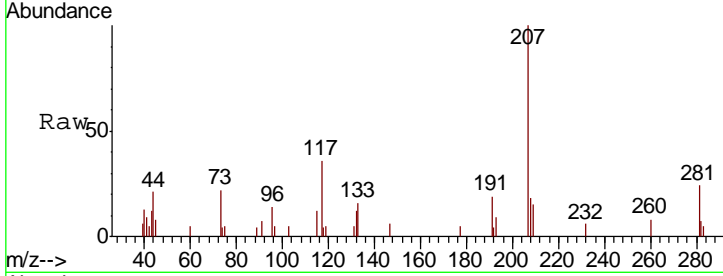




#90
 Hexachloroethane
 Concen: 0.827 ug/l
 RT: 13.95 min Scan# 3787
 Delta R.T. 0.07 min
 Lab File: VN059237.D
 Acq: 14 Nov 2019 16:28

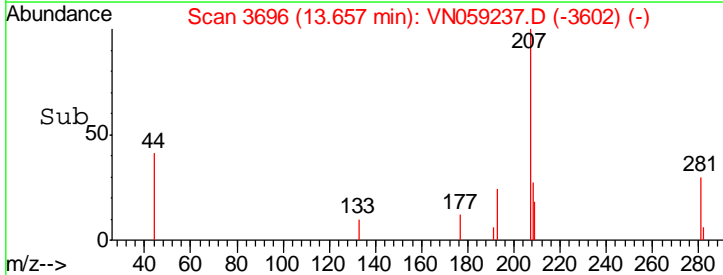
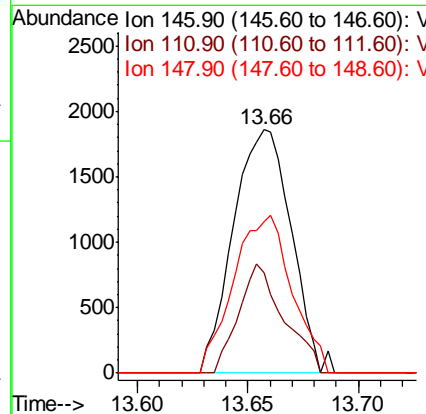
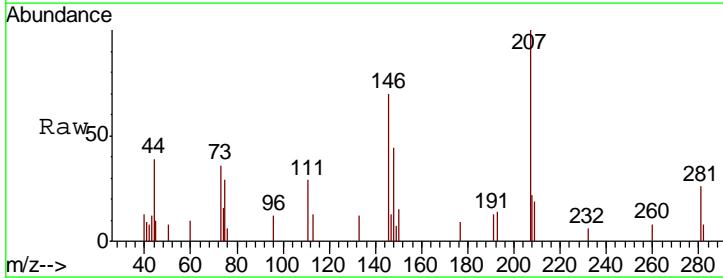
Instrument :
 MSVOA_N
 ClientSampled :

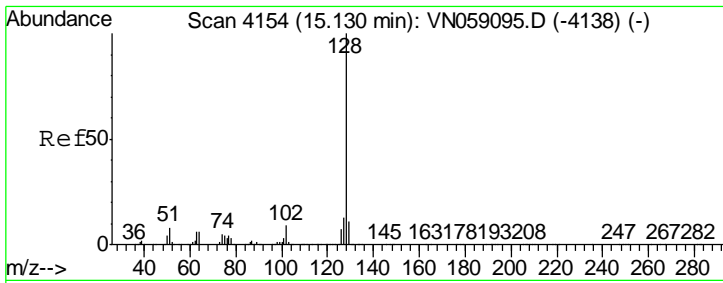
Tgt Ion	Resp	Lower	Upper
117	100		
201	0.0	41.8	125.3#



#91
 1,2-Dichlorobenzene
 Concen: 0.470 ug/l
 RT: 13.66 min Scan# 3696
 Delta R.T. 0.00 min
 Lab File: VN059237.D
 Acq: 14 Nov 2019 16:28

Tgt Ion	Resp	Lower	Upper
146	100		
111	35.1	21.2	63.6
148	65.7	31.6	94.7





#95
 Naphthalene
 Concen: 3.100 ug/l
 RT: 15.13 min Scan# 4155
 Delta R.T. 0.00 min
 Lab File: VN059237.D
 Acq: 14 Nov 2019 16:28

Instrument :
 MSVOA_N
 ClientSampled :

Tot Ion	Ratio	Lower	Upper
128	100		
127	0.0	10.2	15.2#
129	0.0	8.6	12.8#

