

Data Path : Z:\VOASRV\HPCHEM1\MSVOA N\DATA\VN111419\
 Data File : VN059232.D
 Acq On : 14 Nov 2019 14:38
 Operator : JC/SP
 Sample : K5843-02
 Misc : 5.00mL/MSVOA N/WATER
 ALS Vial : 16 Sample Multiplier: 1

Instrument :
 MSVOA_N
 ClientSampleId :
 MW-318B-SRI4

Quant Time: Nov 15 07:44:19 2019
 Quant Method : Z:\VOASRV\HPCHEM1\MSVOA_N\METHODS\82N110619W.M
 Quant Title : SW846 8260
 QLast Update : Thu Nov 07 04:00:41 2019
 Response via : Initial Calibration

Internal Standards	R.T.	QIon	Response	Conc	Units	Dev(Min)
1) Pentafluorobenzene	7.65	168	510435	50.00	ug/l	0.00
34) 1,4-Difluorobenzene	8.57	114	794046	50.00	ug/l	0.00
63) Chlorobenzene-d5	11.40	117	688382	50.00	ug/l	0.00
72) 1,4-Dichlorobenzene-d4	13.35	152	258466	50.00	ug/l	0.00

System Monitoring Compounds

33) 1,2-Dichloroethane-d4	8.01	65	316757	50.48	ug/l	0.00
Spiked Amount				50.000		
			Recovery	=	100.96%	
35) Dibromofluoromethane	7.57	113	251441	53.03	ug/l	0.00
Spiked Amount				50.000		
			Recovery	=	106.06%	
50) Toluene-d8	10.08	98	985716	52.78	ug/l	0.00
Spiked Amount				50.000		
			Recovery	=	105.56%	
62) 4-Bromofluorobenzene	12.40	95	323194	48.00	ug/l	0.00
Spiked Amount				50.000		
			Recovery	=	96.00%	

Target Compounds

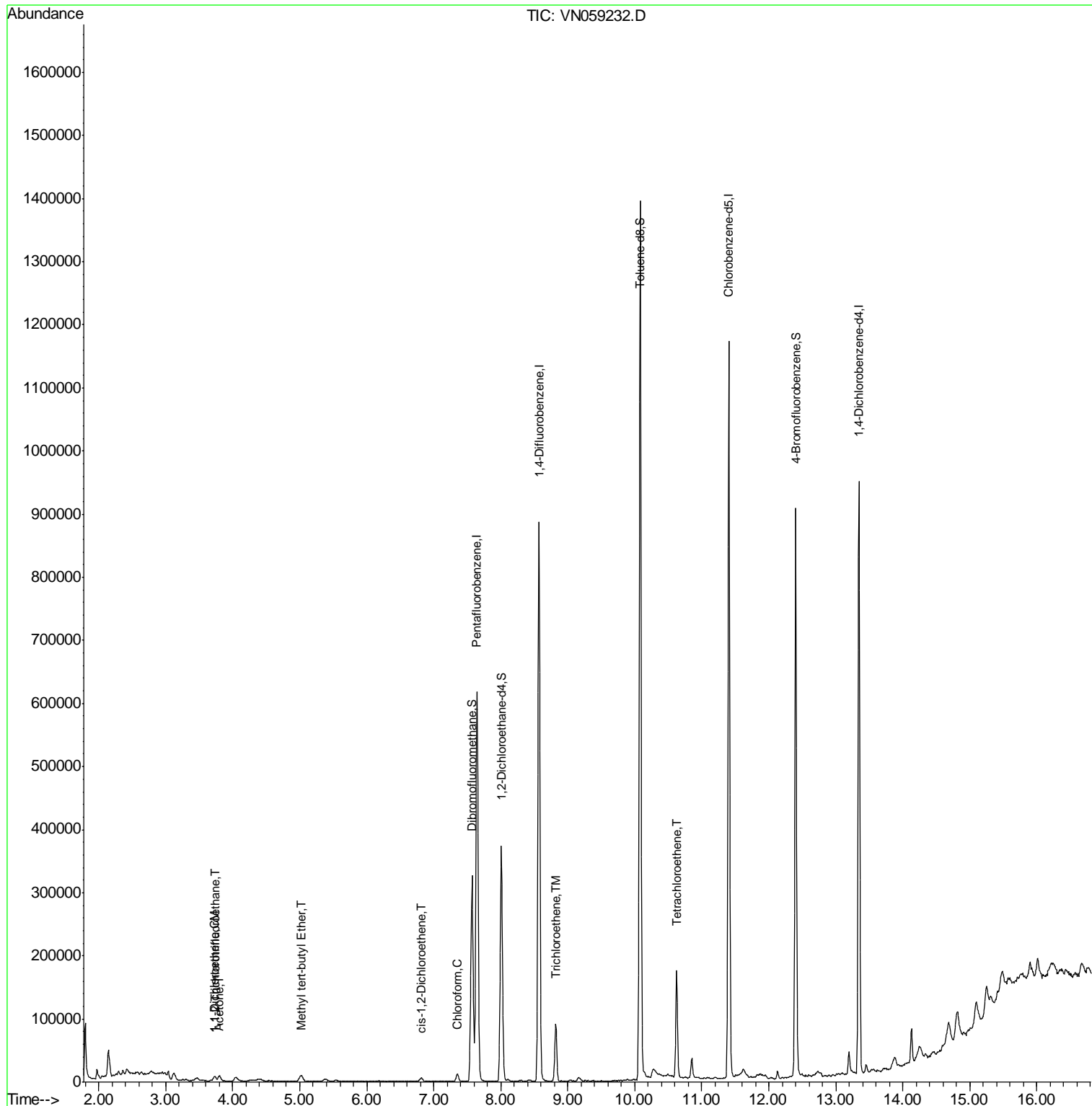
						Qvalue
9) 1,1,2-Trichlorotrifluoroet	3.74	101	4318	0.883	ug/l	96
12) 1,1-Dichloroethene	3.72	96	1501	0.315	ug/l #	80
16) Acetone	3.80	43	14048	4.305	ug/l	97
19) Methyl tert-butyl Ether	5.02	73	16221	0.989	ug/l	92
27) cis-1,2-Dichloroethene	6.81	96	2035	0.343	ug/l	93
30) Chloroform	7.36	83	13497	1.364	ug/l	98
44) Trichloroethene	8.82	130	34840	6.341	ug/l	97
64) Tetrachloroethene	10.63	164	40348	8.620	ug/l	99

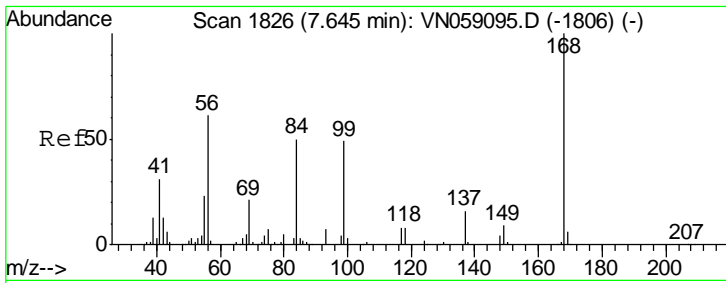
(#) = qualifier out of range (m) = manual integration (+) = signals summed

Data Path : Z:\VOASRV\HPCHEM1\MSVOA N\DATA\VN111419\
Data File : VN059232.D
Acq On : 14 Nov 2019 14:38
Operator : JC/SP
Sample : K5843-02
Misc : 5.00mL/MSVOA N/WATER
ALS Vial : 16 Sample Multiplier: 1

Instrument :
MSVOA_N
ClientSampleId :
MW-318B-SRI4

Quant Time: Nov 15 07:44:19 2019
Quant Method : Z:\VOASRV\HPCHEM1\MSVOA_N\METHODS\82N110619W.M
Quant Title : SW846 8260
QLast Update : Thu Nov 07 04:00:41 2019
Response via : Initial Calibration

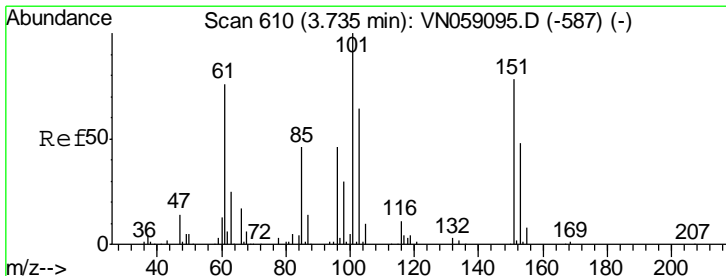
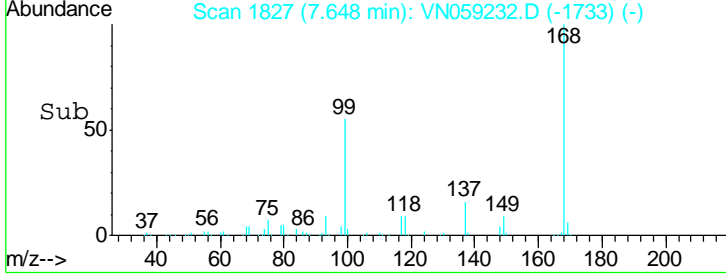
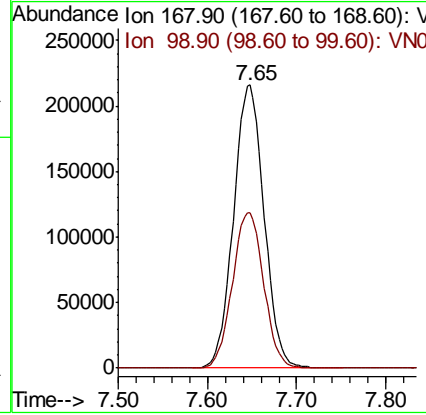
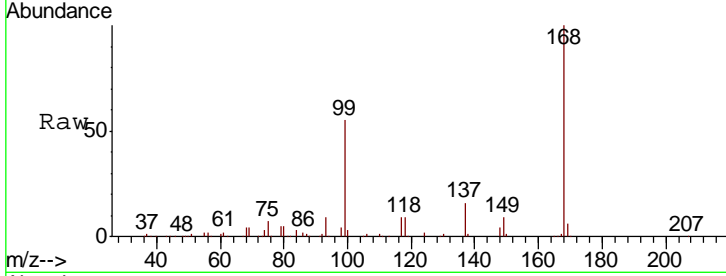




#1
 Pentafluorobenzene
 Concen: 50.000 ug/l
 RT: 7.65 min Scan# 1827
 Delta R.T. 0.00 min
 Lab File: VN059232.D
 Acq: 14 Nov 2019 14:38

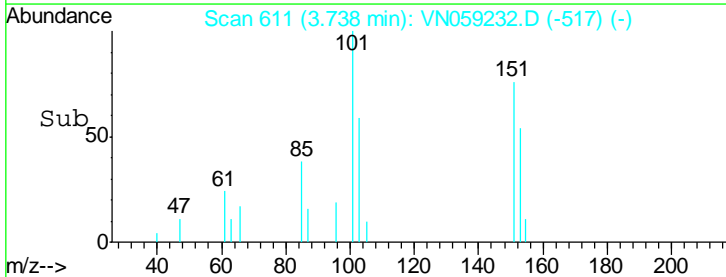
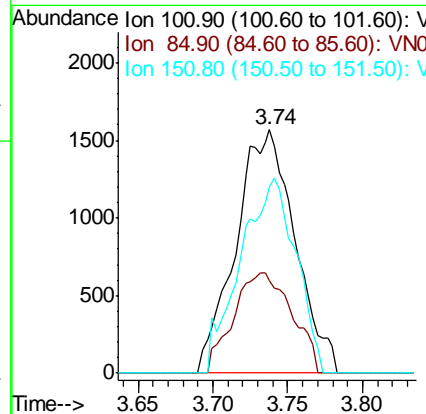
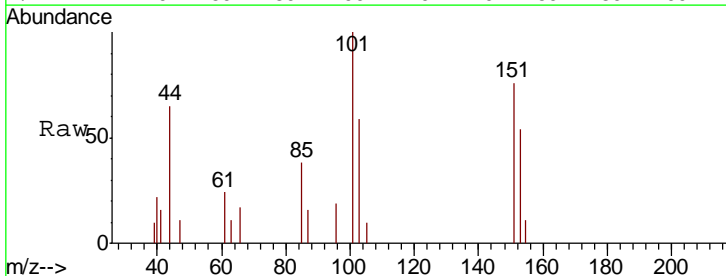
Instrument :
 MSVOA_N
 ClientSampled :
 MW-318B-SRI4

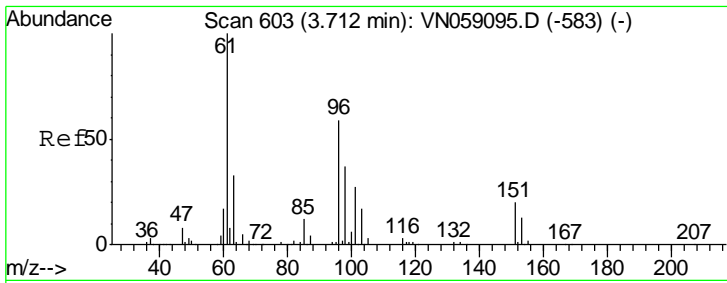
Tgt Ion:168 Resp: 510435
 Ion Ratio Lower Upper
 168 100
 99 55.0 45.7 68.5



#9
 1,1,2-Trichlorotrifluoroethane
 Concen: 0.883 ug/l
 RT: 3.74 min Scan# 611
 Delta R.T. 0.00 min
 Lab File: VN059232.D
 Acq: 14 Nov 2019 14:38

Tgt Ion:101 Resp: 4318
 Ion Ratio Lower Upper
 101 100
 85 40.7 35.5 53.3
 151 75.2 62.2 93.2

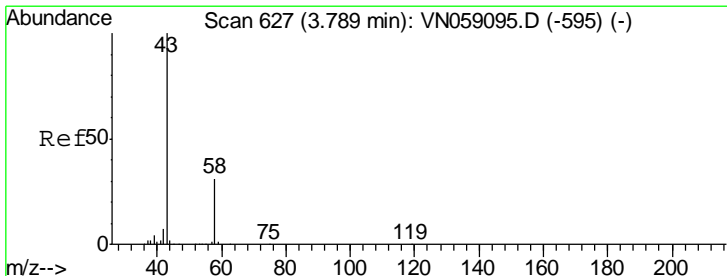
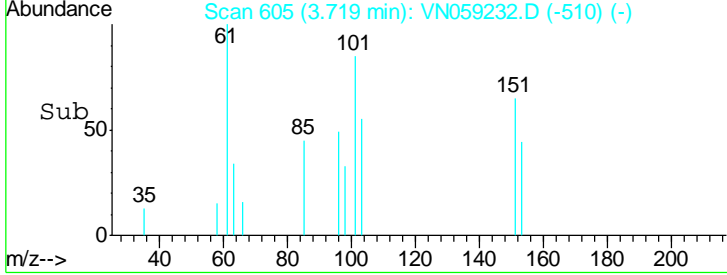
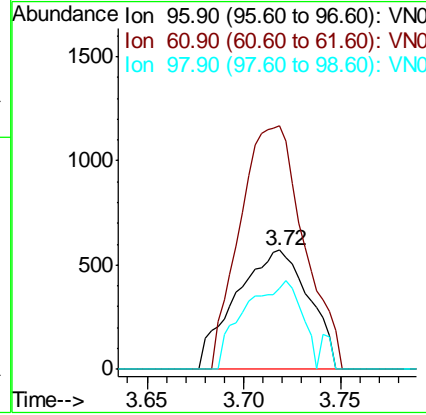
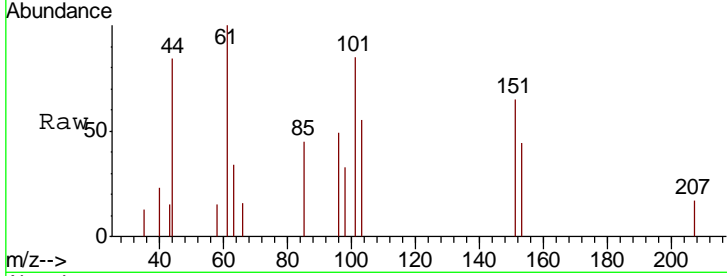




#12
 1,1-Dichloroethene
 Concen: 0.315 ug/l
 RT: 3.72 min Scan# 605
 Delta R.T. 0.01 min
 Lab File: VN059232.D
 Acq: 14 Nov 2019 14:38

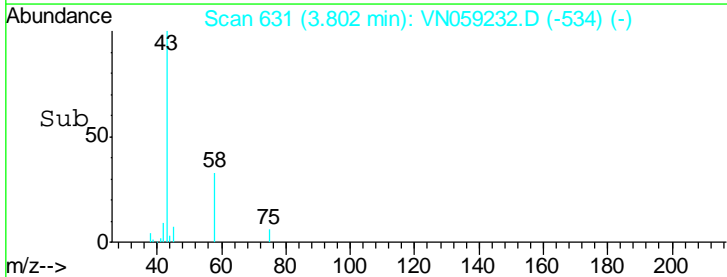
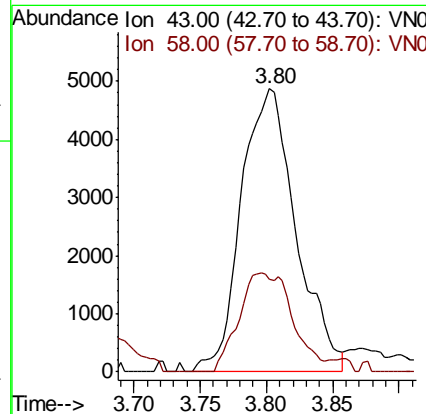
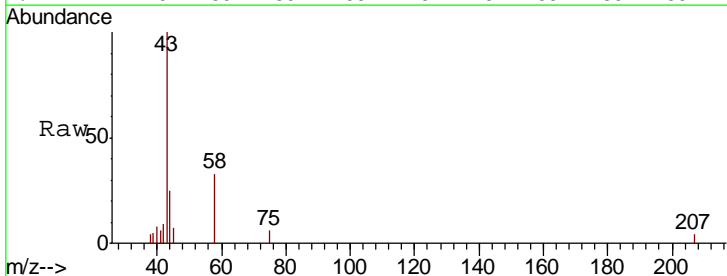
Instrument :
 MSVOA_N
 ClientSampled :
 MW-318B-SRI4

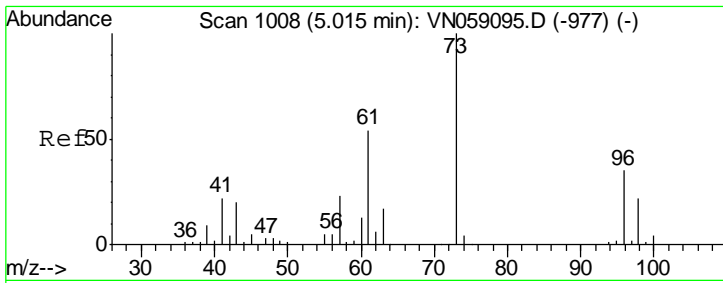
Tgt Ion	Resp	Lower	Upper
96	1501		
Ion Ratio			
96	100		
61	204.9	136.5	204.7#
98	67.7	50.2	75.4



#16
 Acetone
 Concen: 4.305 ug/l
 RT: 3.80 min Scan# 631
 Delta R.T. 0.01 min
 Lab File: VN059232.D
 Acq: 14 Nov 2019 14:38

Tgt Ion	Resp	Lower	Upper
43	14048		
Ion Ratio			
43	100		
58	32.7	24.9	37.3

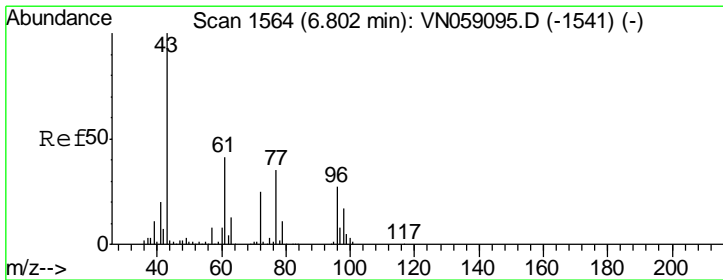
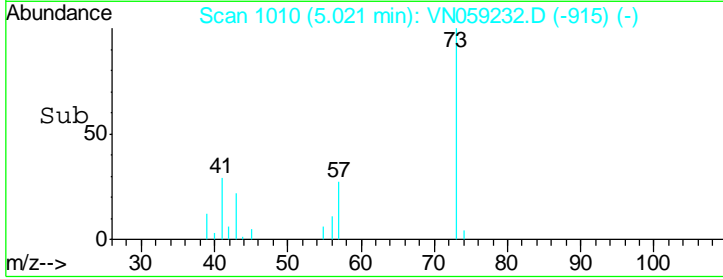
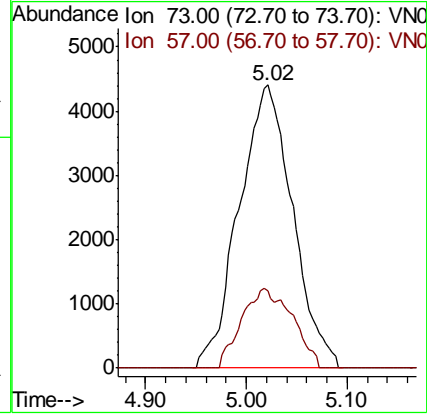
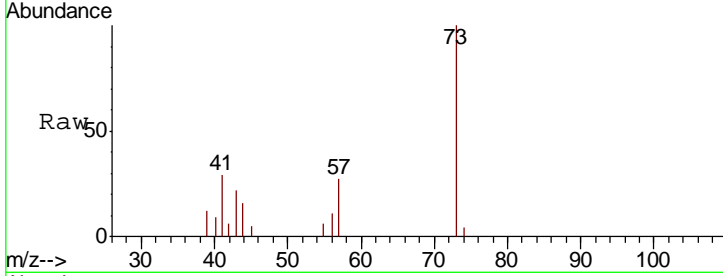




#19
 Methyl tert-butyl Ether
 Concen: 0.989 ug/l
 RT: 5.02 min Scan# 1010
 Delta R.T. 0.01 min
 Lab File: VN059232.D
 Acq: 14 Nov 2019 14:38

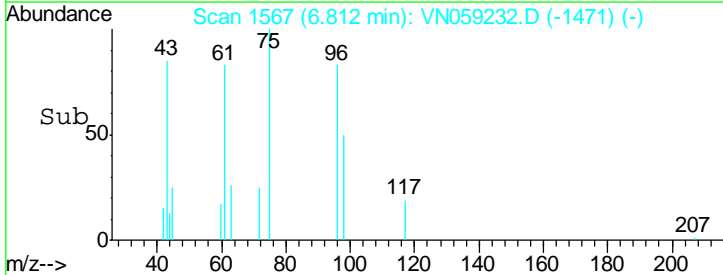
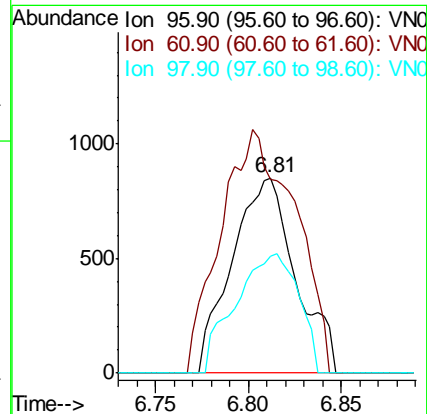
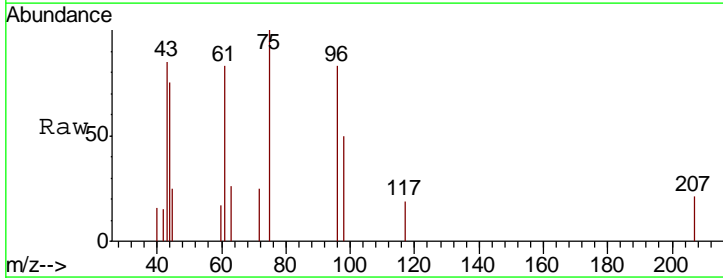
Instrument :
 MSVOA_N
 ClientSampled :
 MW-318B-SRI4

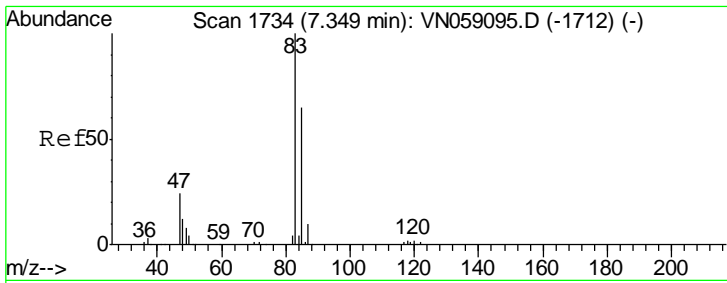
Tgt Ion: 73 Resp: 16221
 Ion Ratio Lower Upper
 73 100
 57 27.1 18.4 27.6



#27
 cis-1,2-Dichloroethene
 Concen: 0.343 ug/l
 RT: 6.81 min Scan# 1567
 Delta R.T. 0.01 min
 Lab File: VN059232.D
 Acq: 14 Nov 2019 14:38

Tgt Ion: 96 Resp: 2035
 Ion Ratio Lower Upper
 96 100
 61 145.7 0.0 311.6
 98 60.6 0.0 129.8

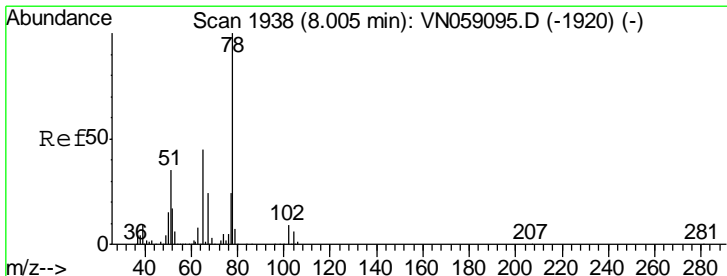
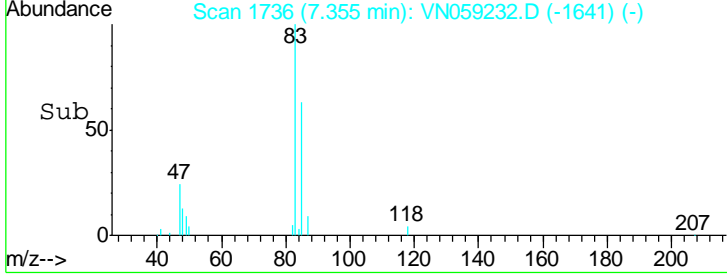
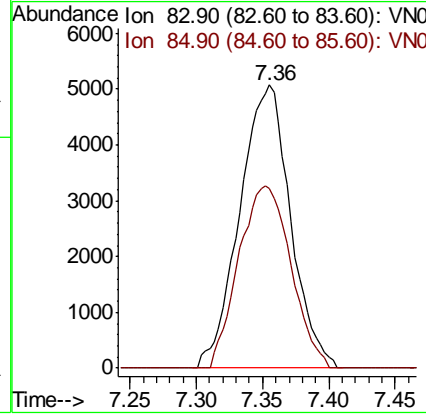
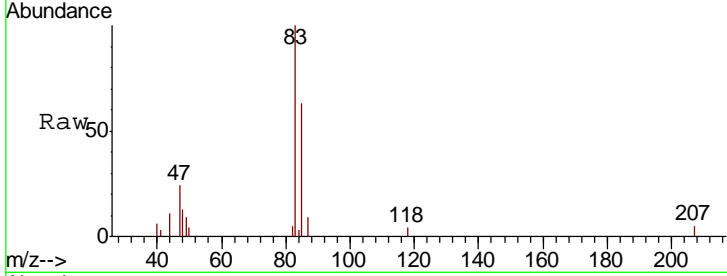




#30
 Chloroform
 Concen: 1.364 ug/l
 RT: 7.36 min Scan# 1736
 Delta R.T. 0.01 min
 Lab File: VN059232.D
 Acq: 14 Nov 2019 14:38

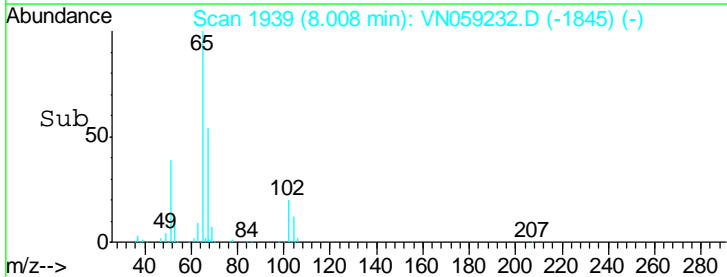
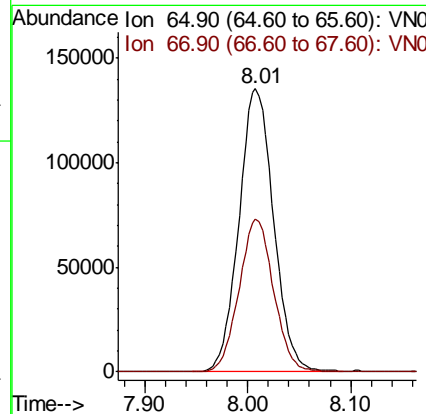
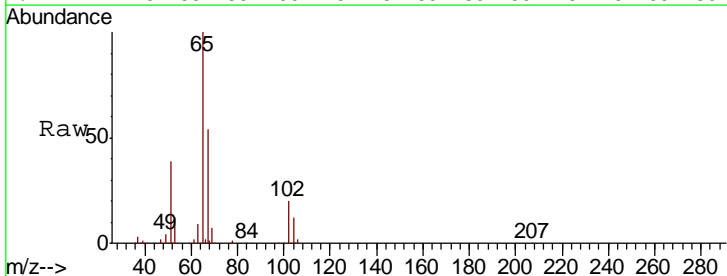
Instrument : MSVOA_N
 ClientSampled : MW-318B-SRI4

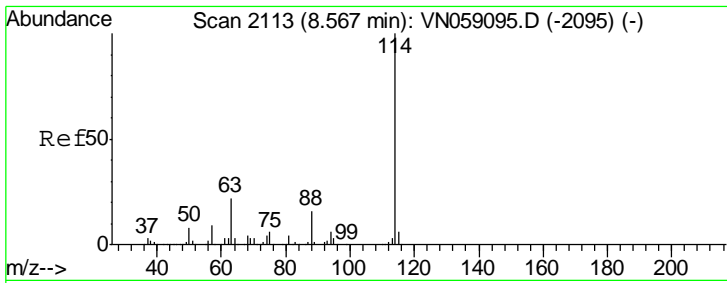
Tgt Ion	Resp	Lower	Upper
83	13497		
85	63.3	51.8	77.8



#33
 1,2-Dichloroethane-d4
 Concen: 50.483 ug/l
 RT: 8.01 min Scan# 1939
 Delta R.T. 0.00 min
 Lab File: VN059232.D
 Acq: 14 Nov 2019 14:38

Tgt Ion	Resp	Lower	Upper
65	316757		
67	53.8	0.0	107.4

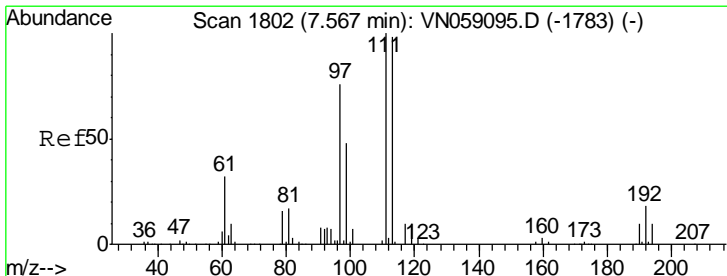
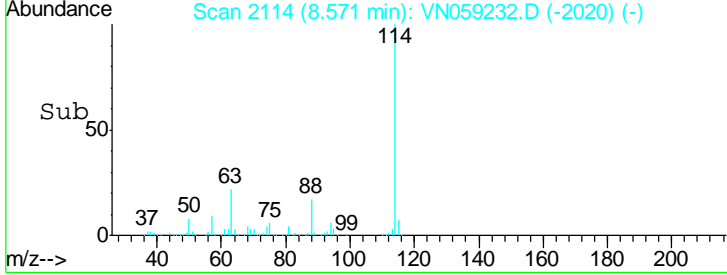
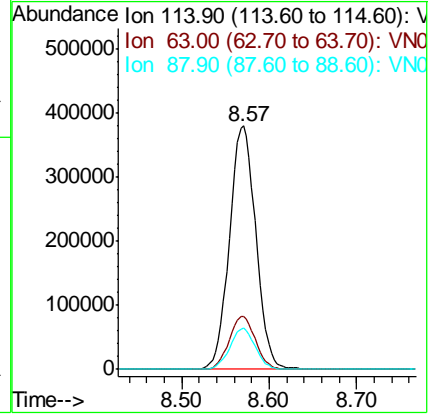
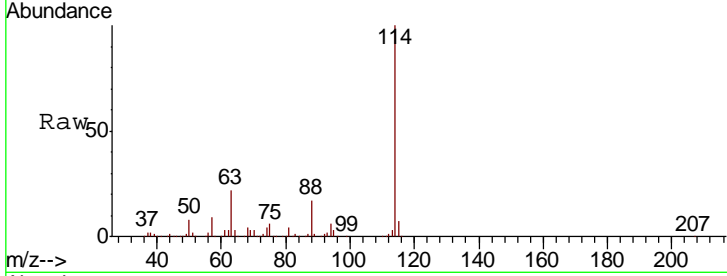




#34
 1,4-Difluorobenzene
 Concen: 50.000 ug/l
 RT: 8.57 min Scan# 2114
 Delta R.T. 0.00 min
 Lab File: VN059232.D
 Acq: 14 Nov 2019 14:38

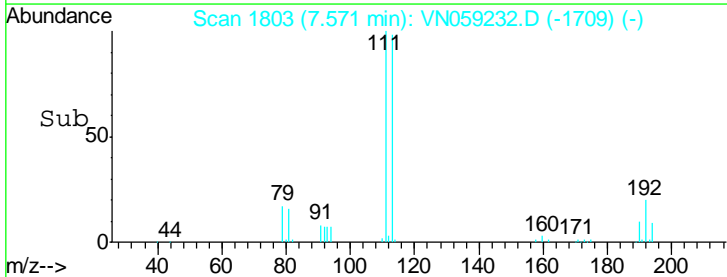
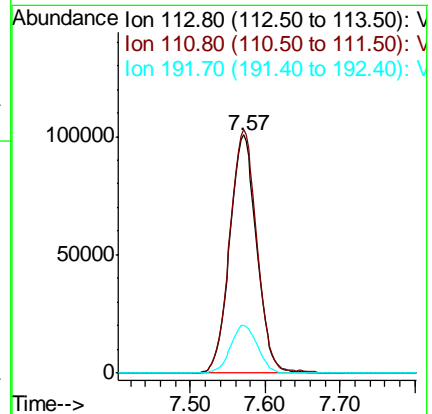
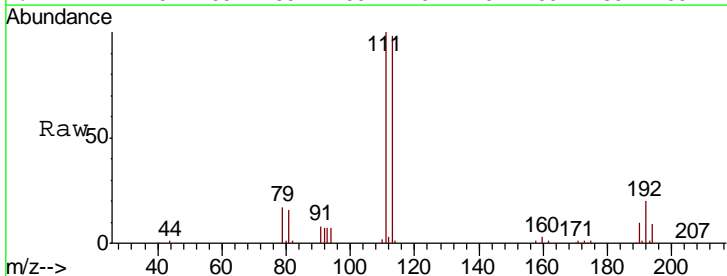
Instrument :
 MSVOA_N
 ClientSampleId :
 MW-318B-SRI4

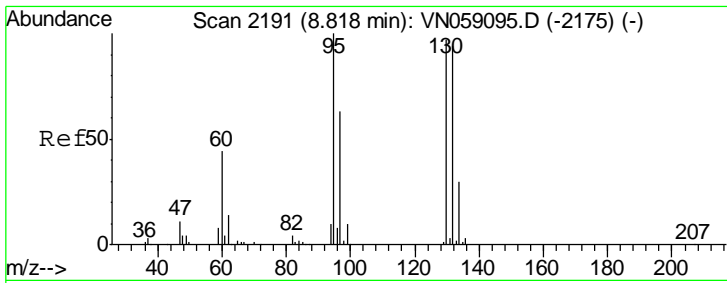
Tgt Ion	Resp	Lower	Upper
114	100		
63	21.8	0.0	43.4
88	16.8	0.0	32.2



#35
 Dibromofluoromethane
 Concen: 53.033 ug/l
 RT: 7.57 min Scan# 1803
 Delta R.T. 0.00 min
 Lab File: VN059232.D
 Acq: 14 Nov 2019 14:38

Tgt Ion	Resp	Lower	Upper
113	100		
111	102.8	82.8	124.2
192	20.1	16.1	24.1

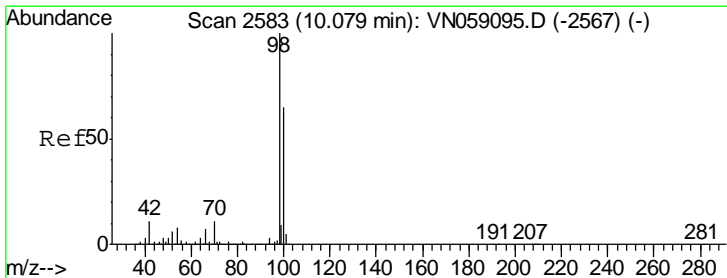
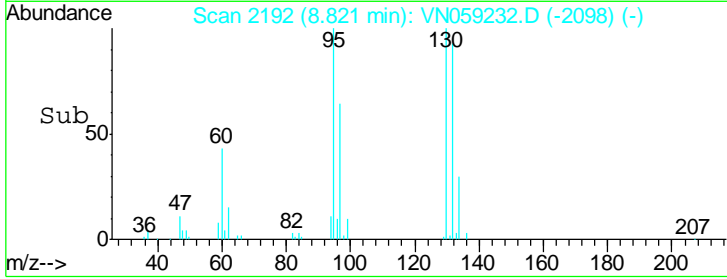
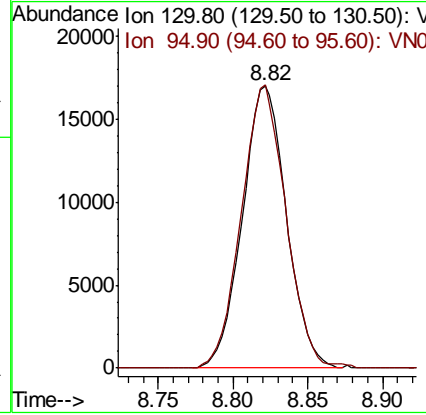
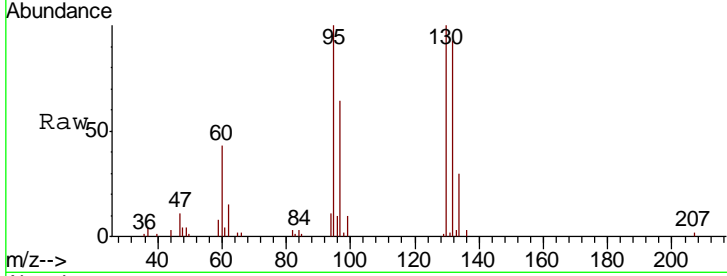




#44
 Trichloroethene
 Concen: 6.341 ug/l
 RT: 8.82 min Scan# 2192
 Delta R.T. 0.00 min
 Lab File: VN059232.D
 Acq: 14 Nov 2019 14:38

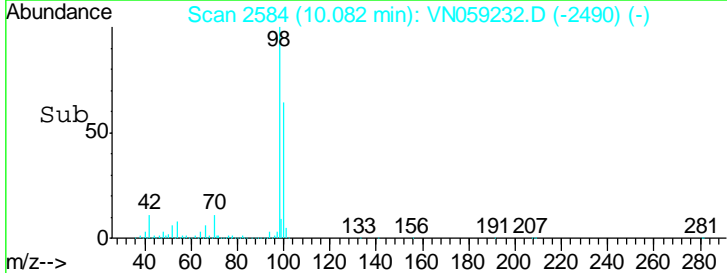
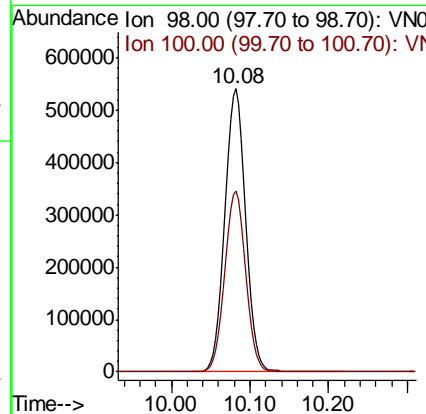
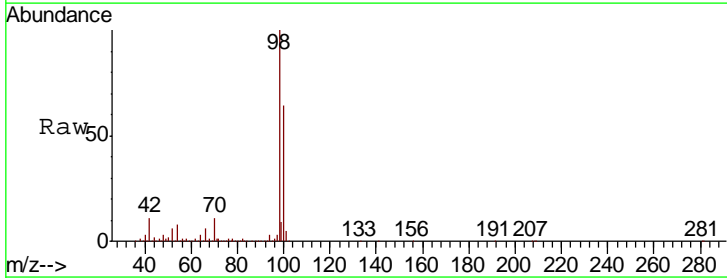
Instrument :
 MSVOA_N
 ClientSampled :
 MW-318B-SRI4

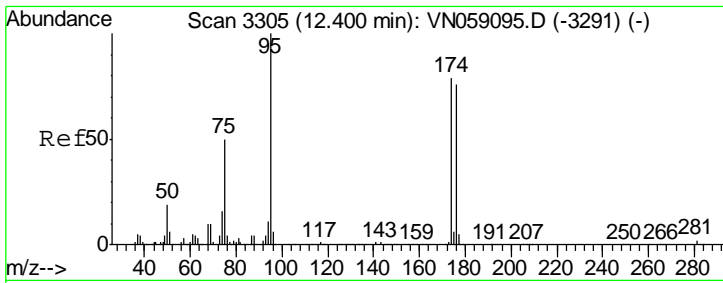
Tgt Ion	Resp	Lower	Upper
130	100		
95	100.3	0.0	206.4



#50
 Toluene-d8
 Concen: 52.782 ug/l
 RT: 10.08 min Scan# 2584
 Delta R.T. 0.00 min
 Lab File: VN059232.D
 Acq: 14 Nov 2019 14:38

Tgt Ion	Resp	Lower	Upper
98	100		
100	64.4	52.2	78.2

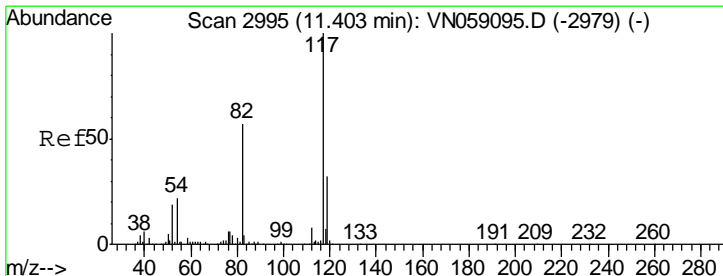
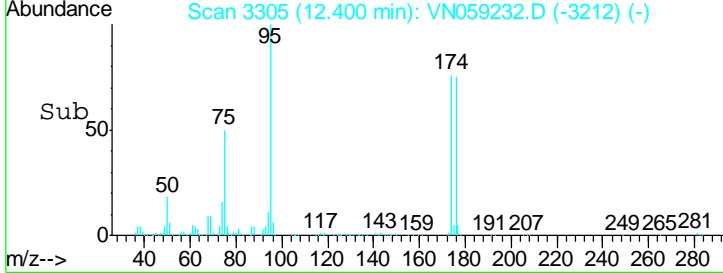
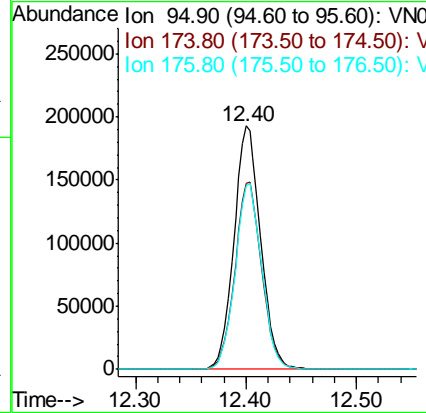
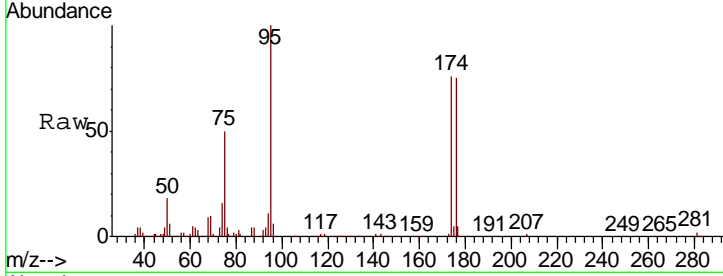




#62
 4-Bromofluorobenzene
 Concen: 47.997 ug/l
 RT: 12.40 min Scan# 3305
 Delta R.T. -0.00 min
 Lab File: VN059232.D
 Acq: 14 Nov 2019 14:38

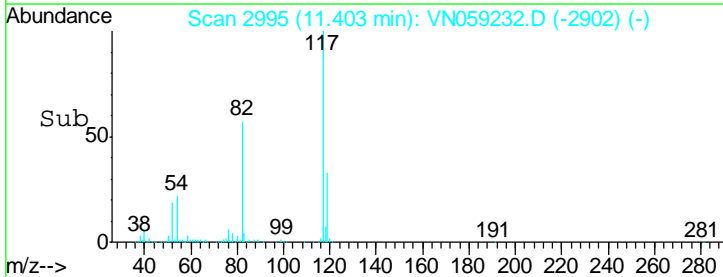
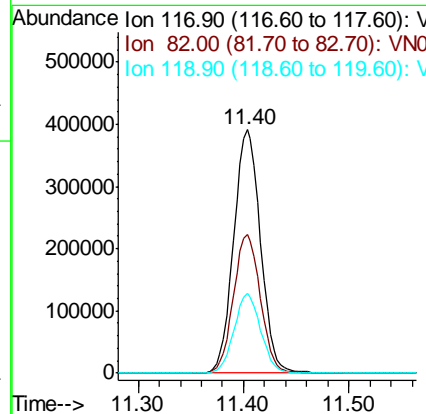
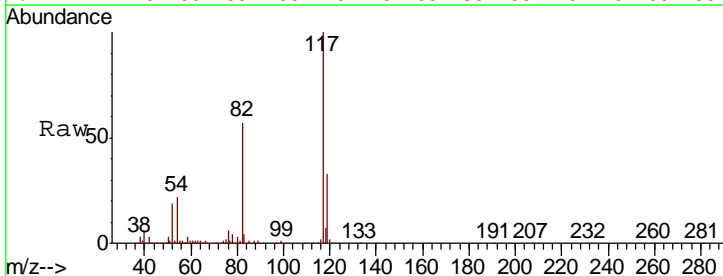
Instrument :
 MSVOA_N
 ClientSampled :
 MW-318B-SRI4

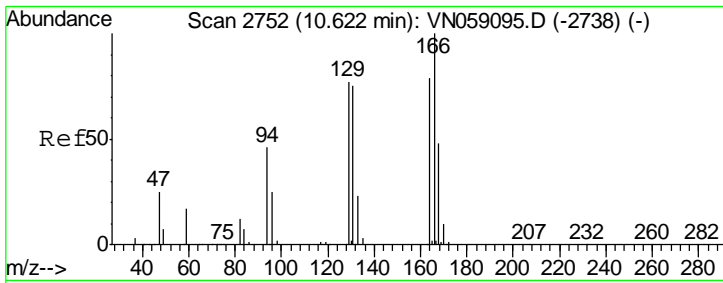
Tgt Ion	Resp	Lower	Upper
95	323194		
174	77.0	0.0	158.2
176	75.9	0.0	151.8



#63
 Chlorobenzene-d5
 Concen: 50.000 ug/l
 RT: 11.40 min Scan# 2995
 Delta R.T. -0.00 min
 Lab File: VN059232.D
 Acq: 14 Nov 2019 14:38

Tgt Ion	Resp	Lower	Upper
117	688382		
82	57.1	45.8	68.8
119	32.5	25.8	38.6

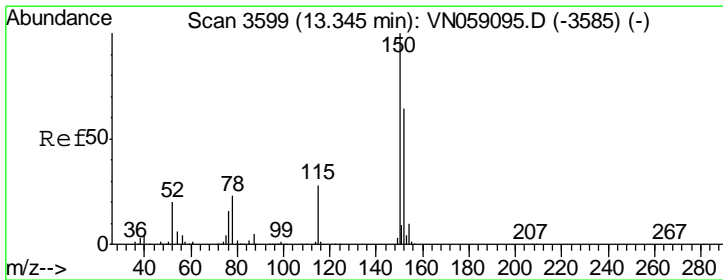
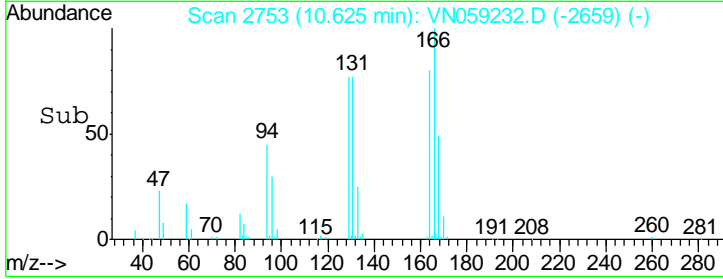
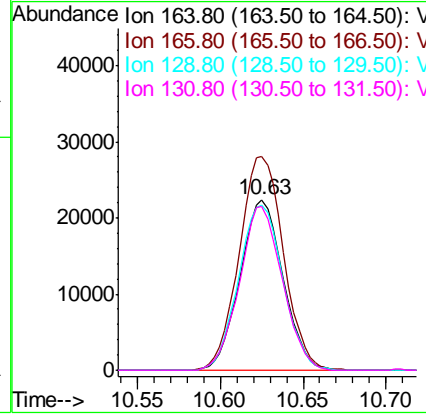
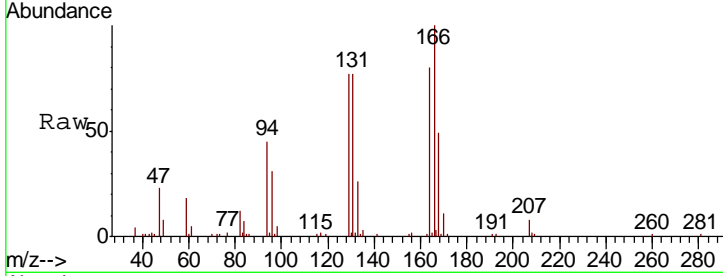




#64
 Tetrachloroethene
 Concen: 8.620 ug/l
 RT: 10.63 min Scan# 2753
 Delta R.T. 0.00 min
 Lab File: VN059232.D
 Acq: 14 Nov 2019 14:38

Instrument :
 MSVOA_N
 ClientSampled :
 MW-318B-SRI4

Tgt Ion	Resp	Lower	Upper
164	100		
166	125.4	101.5	152.3
129	97.1	78.3	117.5
131	96.1	75.9	113.9



#72
 1,4-Dichlorobenzene-d4
 Concen: 50.000 ug/l
 RT: 13.35 min Scan# 3599
 Delta R.T. -0.00 min
 Lab File: VN059232.D
 Acq: 14 Nov 2019 14:38

Tgt Ion	Resp	Lower	Upper
152	100		
115	59.8	29.4	88.2
150	155.4	0.0	345.8

