

Data Path : Z:\VOASRV\HPCHEM1\MSVOA N\DATA\VN111419\  
 Data File : VN059236.D  
 Acq On : 14 Nov 2019 16:06  
 Operator : JC/SP  
 Sample : K5843-04  
 Misc : 5.00mL/MSVOA N/WATER  
 ALS Vial : 20 Sample Multiplier: 1

**Instrument :**  
 MSVOA\_N  
**Client Sampled :**  
 MW-318D-SRI4

**Manual Integrations**  
**APPROVED**  
 MMDadoda  
 11/15/2019 11:39:43 AM

Quant Time: Nov 15 07:52:25 2019  
 Quant Method : Z:\VOASRV\HPCHEM1\MSVOA\_N\METHODS\82N110619W.M  
 Quant Title : SW846 8260  
 QLast Update : Thu Nov 07 04:00:41 2019  
 Response via : Initial Calibration

Internal Standards	R.T.	QIon	Response	Conc	Units	Dev(Min)
1) Pentafluorobenzene	7.64	168	482213	50.00	ug/l	0.00
34) 1,4-Difluorobenzene	8.57	114	752941	50.00	ug/l	0.00
63) Chlorobenzene-d5	11.40	117	652977	50.00	ug/l	0.00
72) 1,4-Dichlorobenzene-d4	13.35	152	234244	50.00	ug/l	0.00

System Monitoring Compounds

33) 1,2-Dichloroethane-d4	8.01	65	303707	51.24	ug/l	0.00
Spiked Amount	50.000		Recovery	=	102.48%	
35) Dibromofluoromethane	7.57	113	235505	52.38	ug/l	0.00
Spiked Amount	50.000		Recovery	=	104.76%	
50) Toluene-d8	10.08	98	914685	51.65	ug/l	0.00
Spiked Amount	50.000		Recovery	=	103.30%	
62) 4-Bromofluorobenzene	12.40	95	294704	46.16	ug/l	0.00
Spiked Amount	50.000		Recovery	=	92.32%	

Target Compounds

						Qvalue
9) 1,1,2-Trichlorotrifluoroet	3.74	101	7180	1.555	ug/l	98
12) 1,1-Dichloroethene	3.71	96	1706	0.379	ug/l	88
16) Acetone	3.80	43	11844	3.842	ug/l	97
19) Methyl tert-butyl Ether	5.02	73	15272	0.986	ug/l #	82
27) cis-1,2-Dichloroethene	6.81	96	2499m	0.446	ug/l	
30) Chloroform	7.35	83	25775	2.756	ug/l	93
44) Trichloroethene	8.82	130	69055	13.255	ug/l	95
64) Tetrachloroethene	10.63	164	81480	18.351	ug/l	98

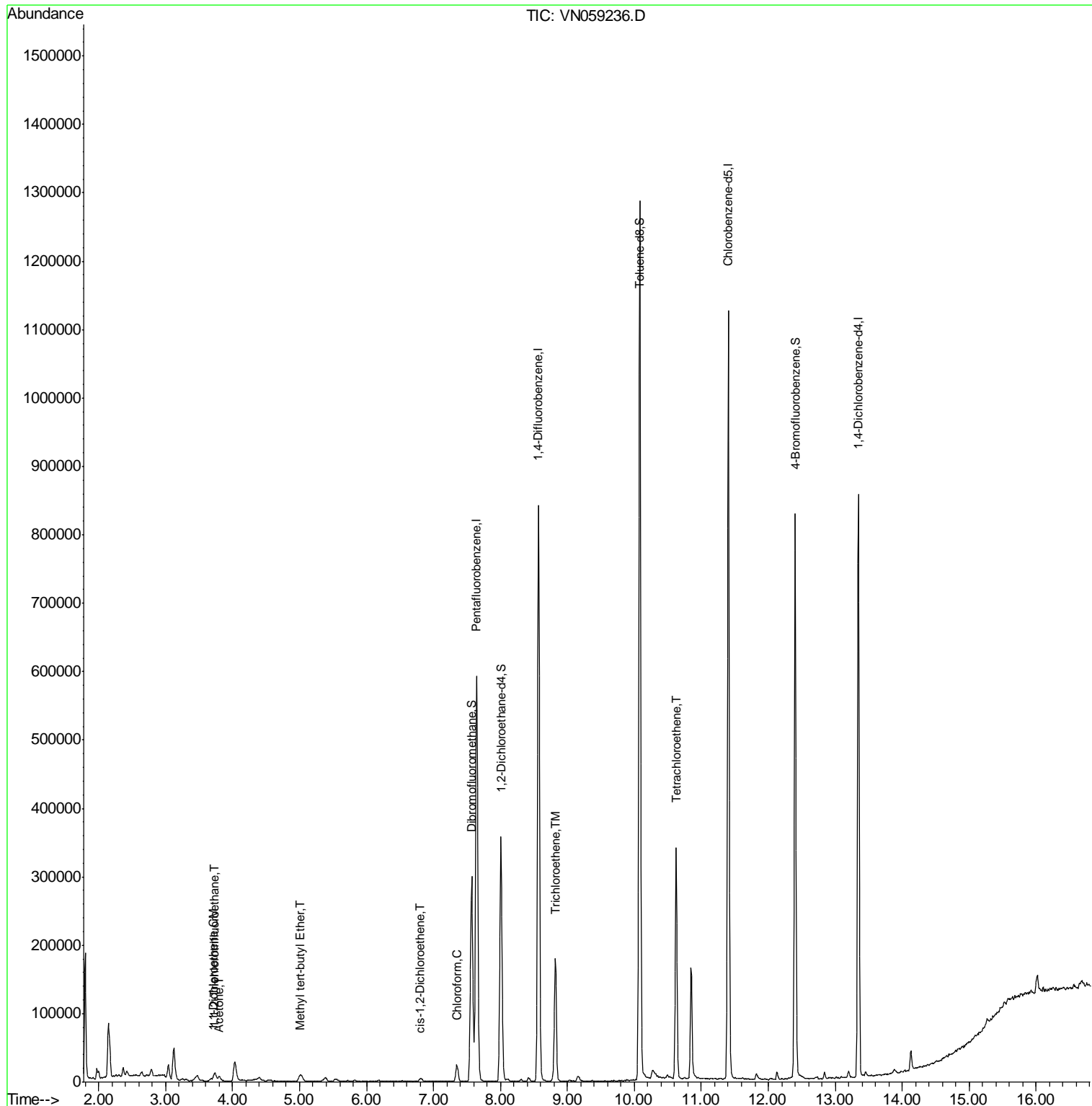
(#) = qualifier out of range (m) = manual integration (+) = signals summed

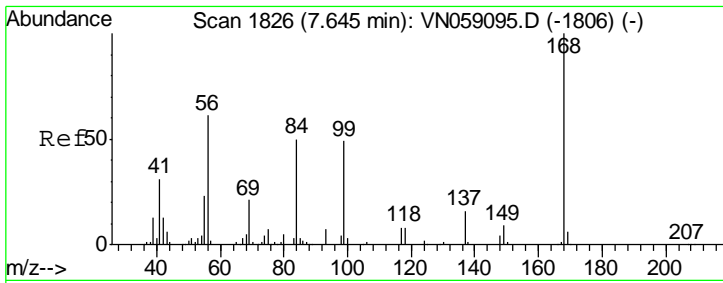
Data Path : Z:\VOASRV\HPCHEM1\MSVOA N\DATA\VN111419\  
 Data File : VN059236.D  
 Acq On : 14 Nov 2019 16:06  
 Operator : JC/SP  
 Sample : K5843-04  
 Misc : 5.00mL/MSVOA N/WATER  
 ALS Vial : 20 Sample Multiplier: 1

Instrument :  
 MSVOA\_N  
 ClientSampleId :  
 MW-318D-SRI4

Manual Integrations  
 APPROVED  
 MMDadoda  
 11/15/2019 11:39:43 AM

Quant Time: Nov 15 07:52:25 2019  
 Quant Method : Z:\VOASRV\HPCHEM1\MSVOA\_N\METHODS\82N110619W.M  
 Quant Title : SW846 8260  
 QLast Update : Thu Nov 07 04:00:41 2019  
 Response via : Initial Calibration





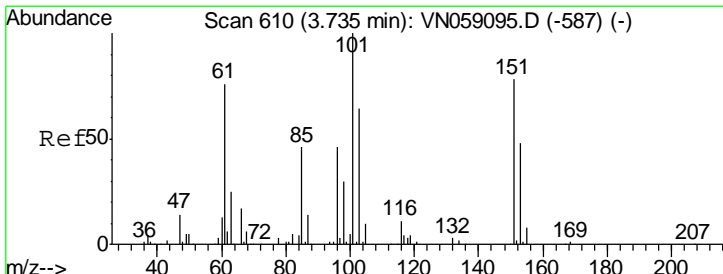
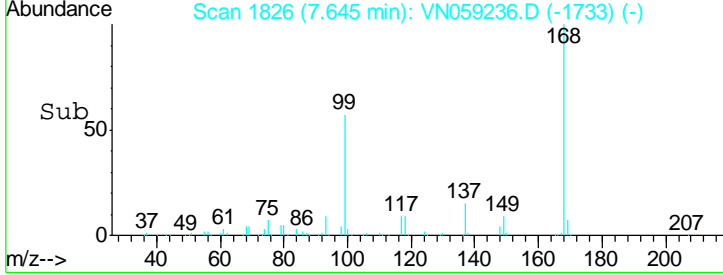
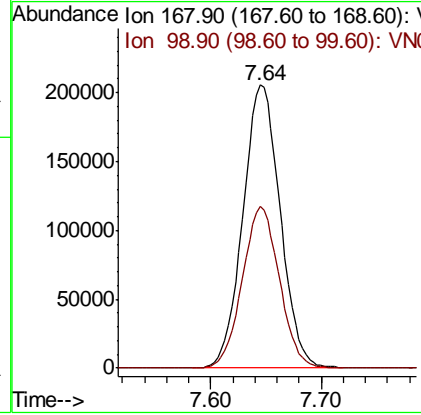
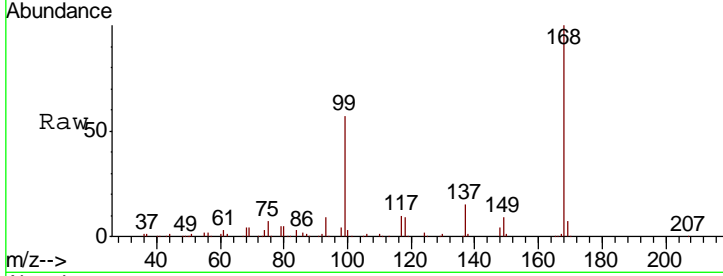
#1  
 Pentafluorobenzene  
 Concen: 50.000 ug/l  
 RT: 7.64 min Scan# 1826  
 Delta R.T. 0.00 min  
 Lab File: VN059236.D  
 Acq: 14 Nov 2019 16:06

Instrument : MSVOA\_N  
 ClientSampled : MW-318D-SRI4

Tgt Ion	Resp	Lower	Upper
168	100		
99	57.0	45.7	68.5

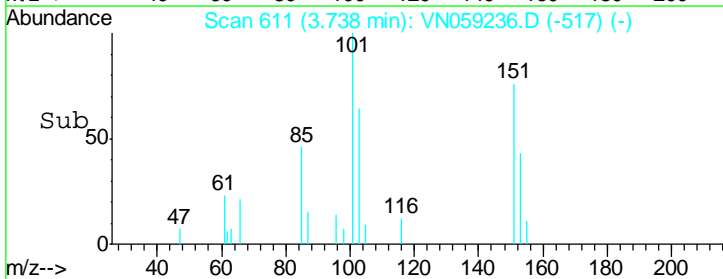
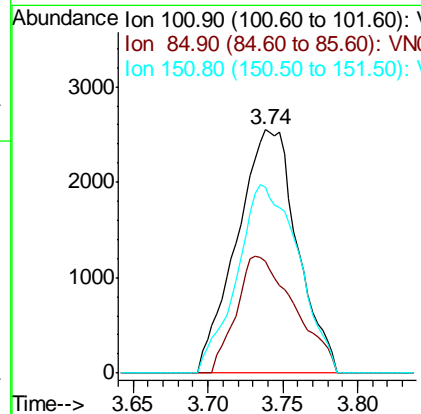
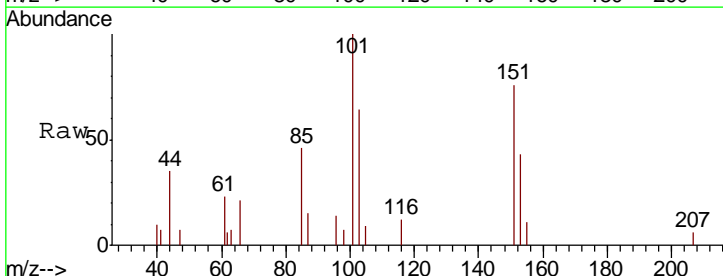
Manual Integrations  
 APPROVED

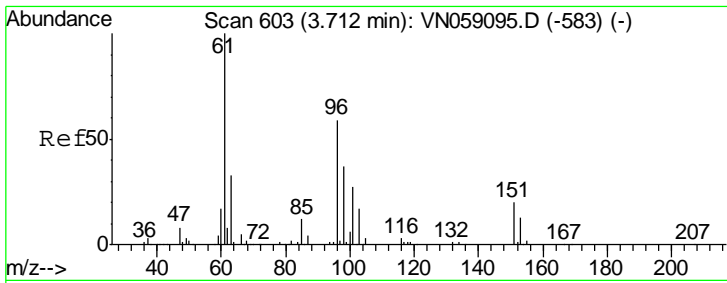
MMDadoda  
 11/15/2019 11:39:43 AM



#9  
 1,1,2-Trichlorotrifluoroethane  
 Concen: 1.555 ug/l  
 RT: 3.74 min Scan# 611  
 Delta R.T. 0.00 min  
 Lab File: VN059236.D  
 Acq: 14 Nov 2019 16:06

Tgt Ion	Resp	Lower	Upper
101	100		
85	46.3	35.5	53.3
151	78.9	62.2	93.2





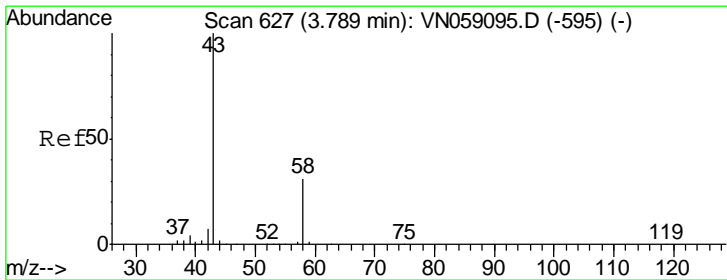
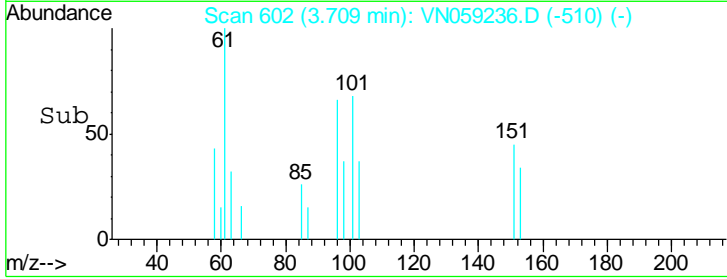
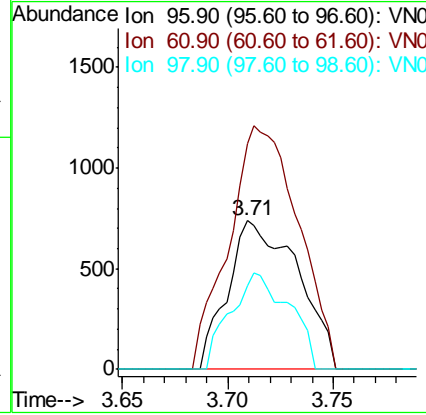
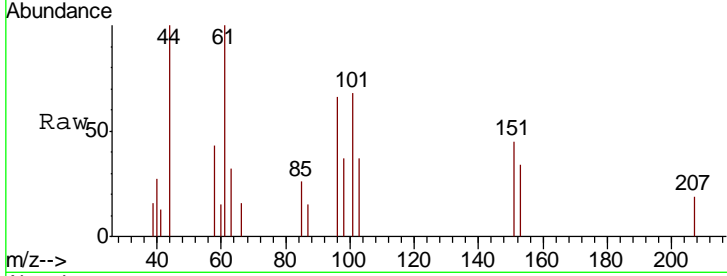
#12  
 1,1-Dichloroethene  
 Concen: 0.379 ug/l  
 RT: 3.71 min Scan# 602  
 Delta R.T. -0.00 min  
 Lab File: VN059236.D  
 Acq: 14 Nov 2019 16:06

**Instrument :**  
 MSVOA\_N  
**ClientSampled :**  
 MW-318D-SRI4

Tgt Ion	Resp	Lower	Upper
96	1706		
100			
61	152.1	136.5	204.7
98	55.9	50.2	75.4

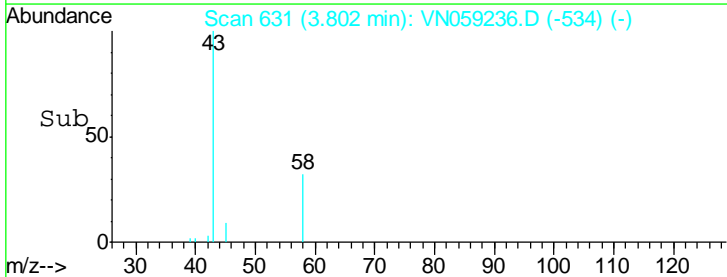
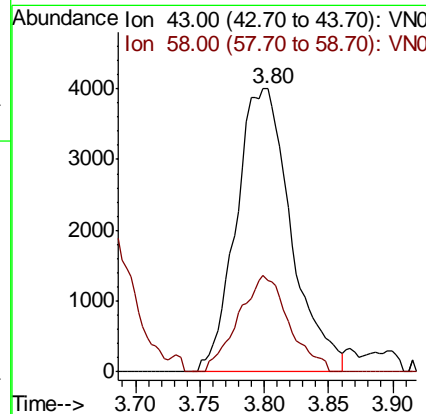
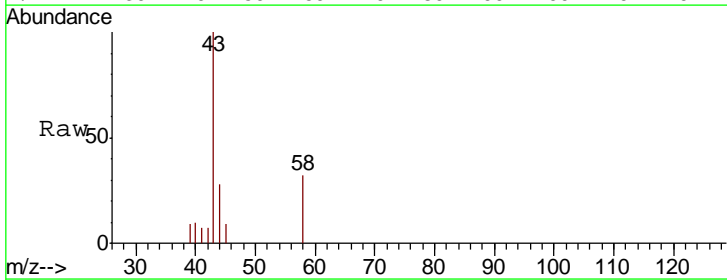
**Manual Integrations**  
**APPROVED**

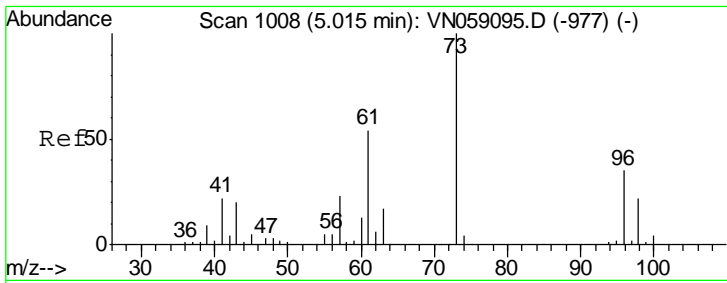
MMDadoda  
 11/15/2019 11:39:43 AM



#16  
 Acetone  
 Concen: 3.842 ug/l  
 RT: 3.80 min Scan# 631  
 Delta R.T. 0.01 min  
 Lab File: VN059236.D  
 Acq: 14 Nov 2019 16:06

Tgt Ion	Resp	Lower	Upper
43	11844		
100			
58	32.5	24.9	37.3





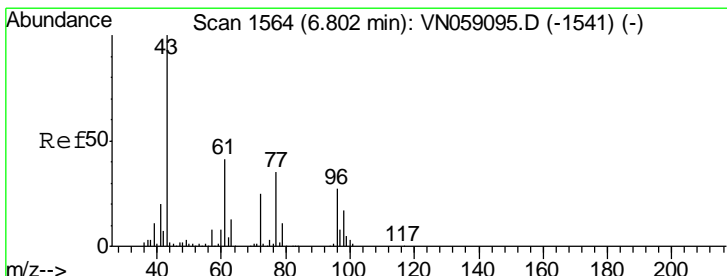
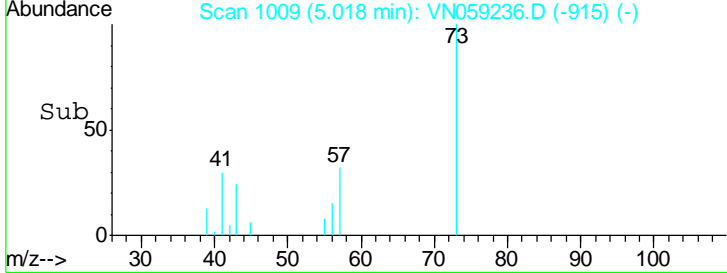
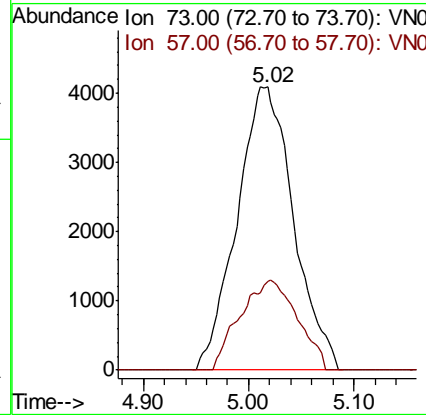
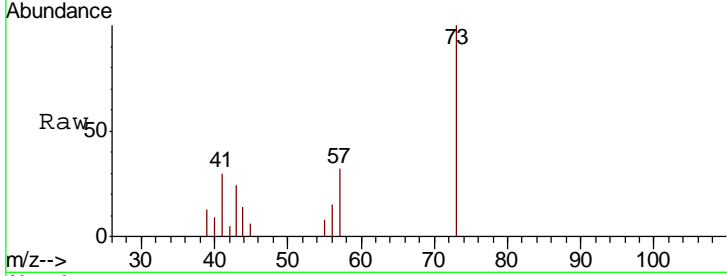
#19  
Methyl tert-butyl Ether  
Concen: 0.986 ug/l  
RT: 5.02 min Scan# 1009  
Delta R.T. 0.00 min  
Lab File: VN059236.D  
Acq: 14 Nov 2019 16:06

Instrument : MSVOA\_N  
ClientSampled : MW-318D-SRI4

Tgt Ion: 73 Resp: 15272

Ion	Ratio	Lower	Upper
73	100		
57	31.6	18.4	27.6#

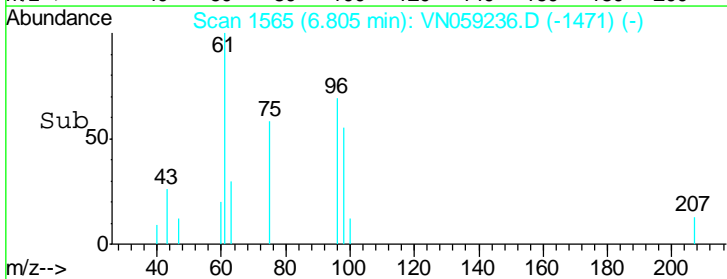
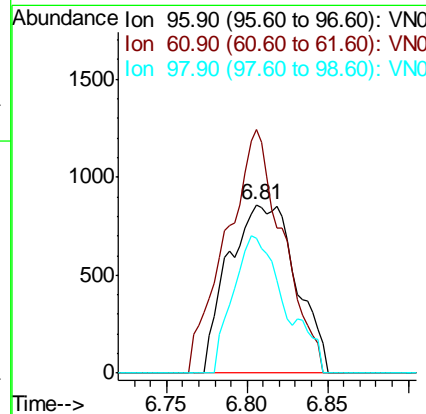
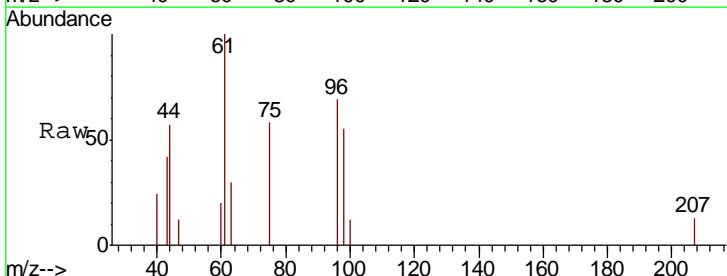
Manual Integrations APPROVED  
MMDadoda  
11/15/2019 11:39:43 AM

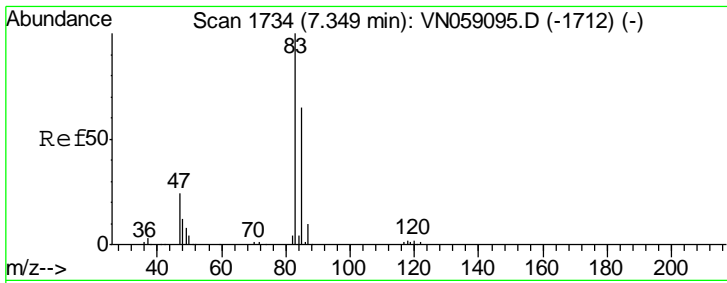


#27  
cis-1,2-Dichloroethene  
Concen: 0.446 ug/l m  
RT: 6.81 min Scan# 1565  
Delta R.T. 0.00 min  
Lab File: VN059236.D  
Acq: 14 Nov 2019 16:06

Tgt Ion: 96 Resp: 2499

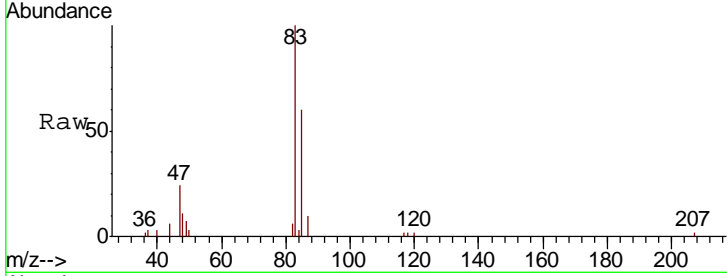
Ion	Ratio	Lower	Upper
96	100		
61	121.1	0.0	311.6
98	53.7	0.0	129.8





#30  
 Chloroform  
 Concen: 2.756 ug/l  
 RT: 7.35 min Scan# 1735  
 Delta R.T. 0.00 min  
 Lab File: VN059236.D  
 Acq: 14 Nov 2019 16:06

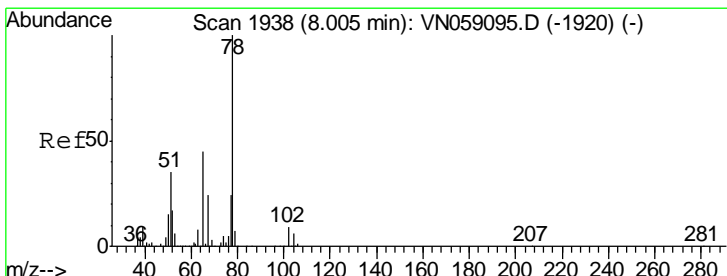
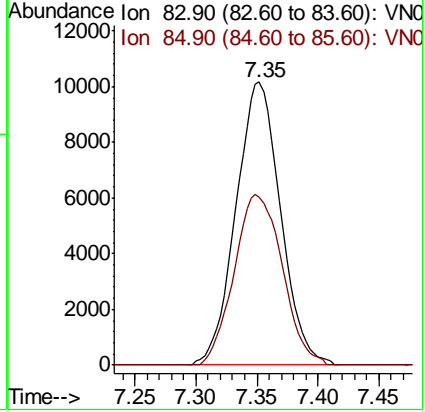
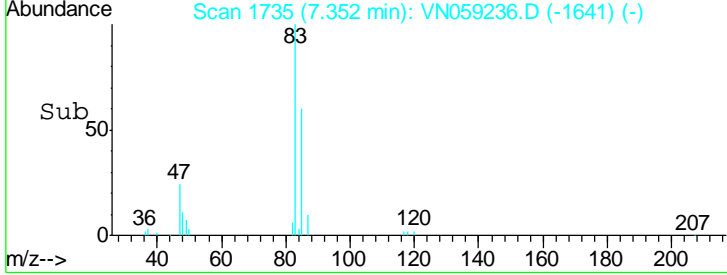
Instrument : MSVOA\_N  
 ClientSampled : MW-318D-SRI4



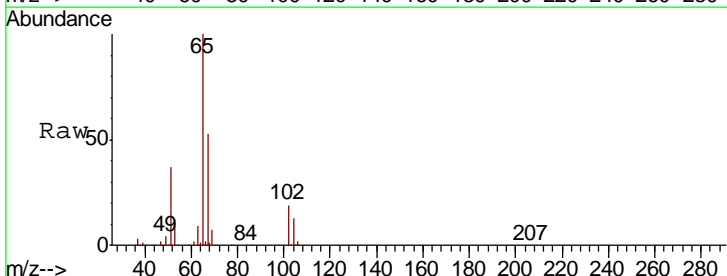
Tgt Ion: 83 Resp: 25775

Ion	Ratio	Lower	Upper
83	100		
85	59.6	51.8	77.8

Manual Integrations APPROVED  
 MMDadoda  
 11/15/2019 11:39:43 AM

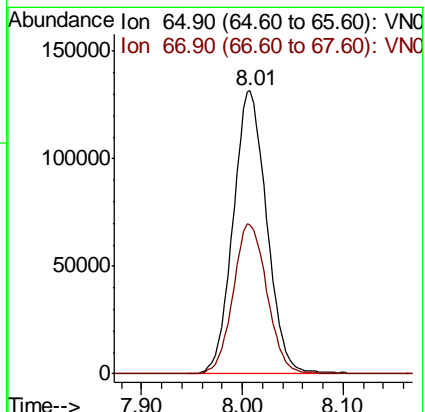
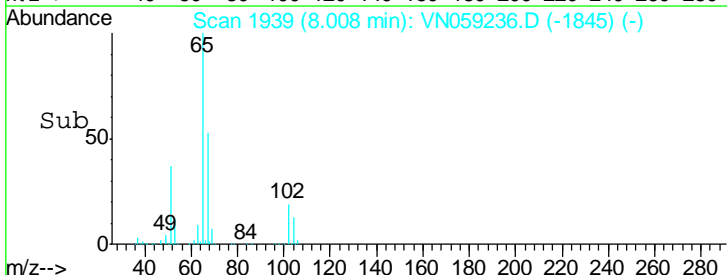


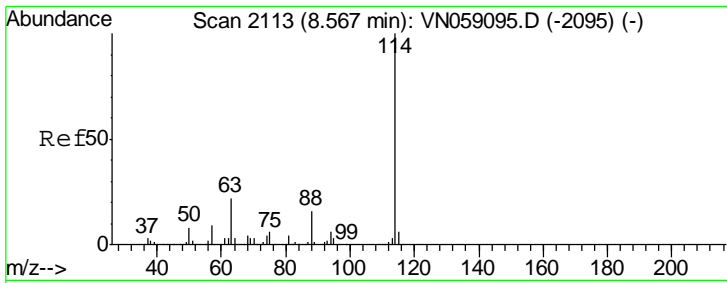
#33  
 1,2-Dichloroethane-d4  
 Concen: 51.236 ug/l  
 RT: 8.01 min Scan# 1939  
 Delta R.T. 0.00 min  
 Lab File: VN059236.D  
 Acq: 14 Nov 2019 16:06



Tgt Ion: 65 Resp: 303707

Ion	Ratio	Lower	Upper
65	100		
67	53.5	0.0	107.4





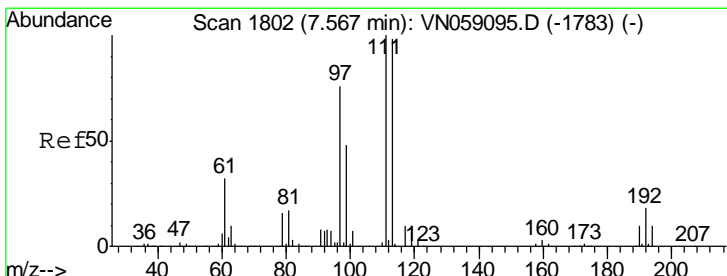
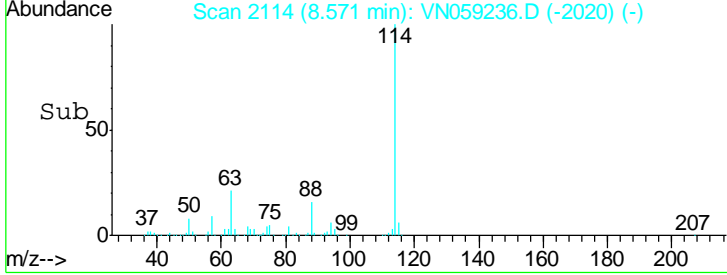
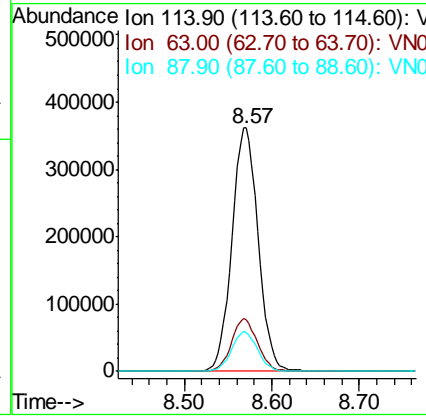
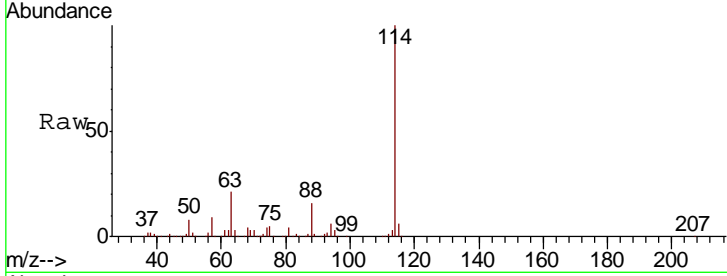
#34  
 1,4-Difluorobenzene  
 Concen: 50.000 ug/l  
 RT: 8.57 min Scan# 2114  
 Delta R.T. 0.00 min  
 Lab File: VN059236.D  
 Acq: 14 Nov 2019 16:06

Instrument :  
 MSVOA\_N  
 ClientSampled :  
 MW-318D-SRI4

Tgt Ion	Resp	Lower	Upper
114	100		
63	21.2	0.0	43.4
88	16.2	0.0	32.2

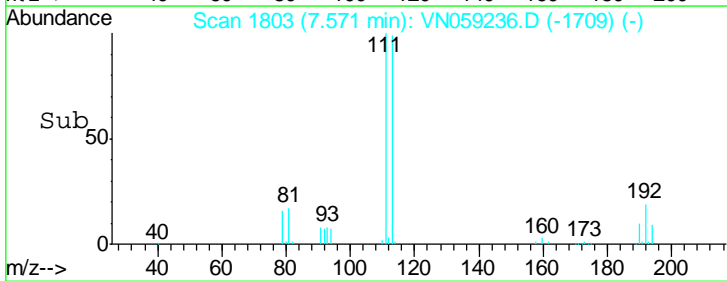
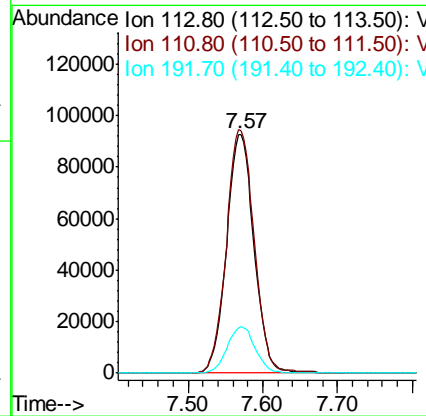
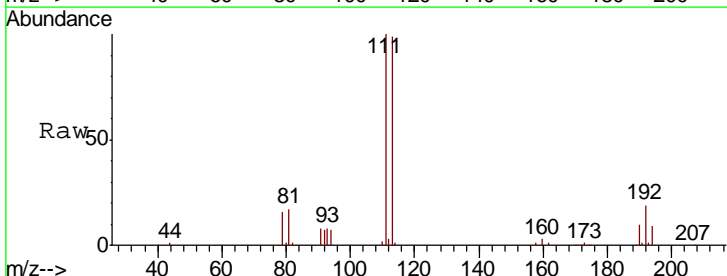
Manual Integrations  
 APPROVED

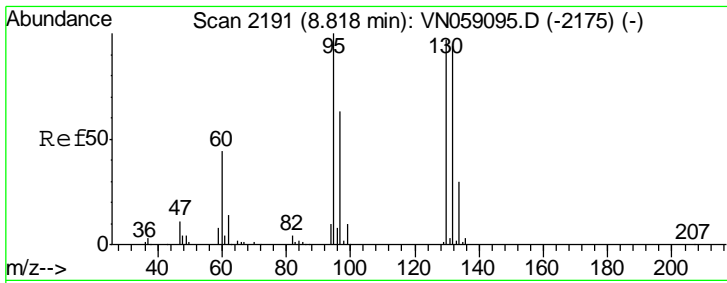
MMDadoda  
 11/15/2019 11:39:43 AM



#35  
 Dibromofluoromethane  
 Concen: 52.383 ug/l  
 RT: 7.57 min Scan# 1803  
 Delta R.T. 0.00 min  
 Lab File: VN059236.D  
 Acq: 14 Nov 2019 16:06

Tgt Ion	Resp	Lower	Upper
113	100		
111	103.4	82.8	124.2
192	19.6	16.1	24.1





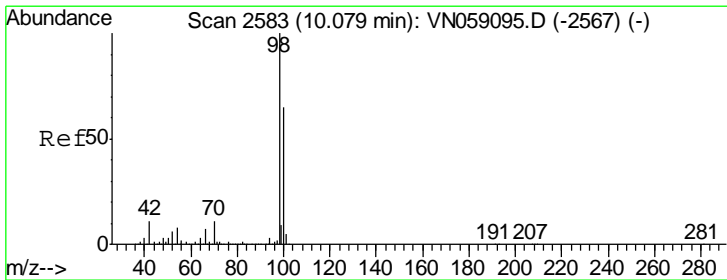
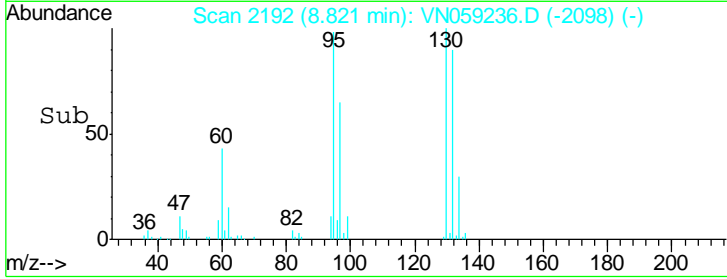
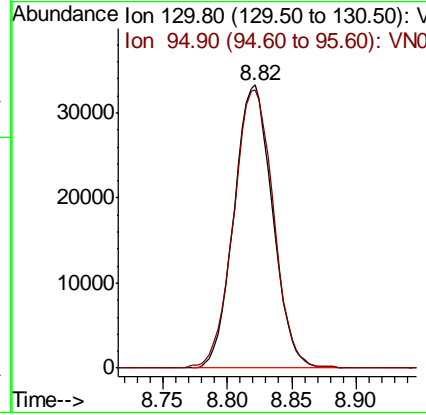
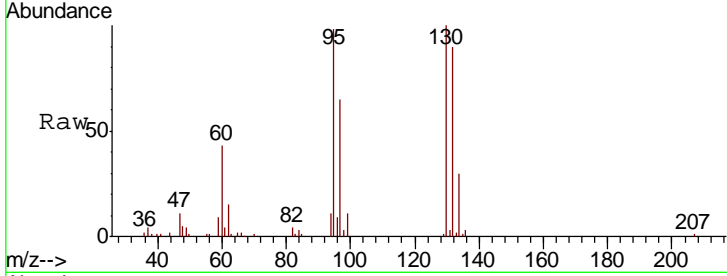
#44  
 Trichloroethene  
 Concen: 13.255 ug/l  
 RT: 8.82 min Scan# 2192  
 Delta R.T. 0.00 min  
 Lab File: VN059236.D  
 Acq: 14 Nov 2019 16:06

**Instrument :**  
 MSVOA\_N  
**ClientSampled :**  
 MW-318D-SRI4

Tgt Ion	Resp	Lower	Upper
130	69055		
95	98.3	0.0	206.4

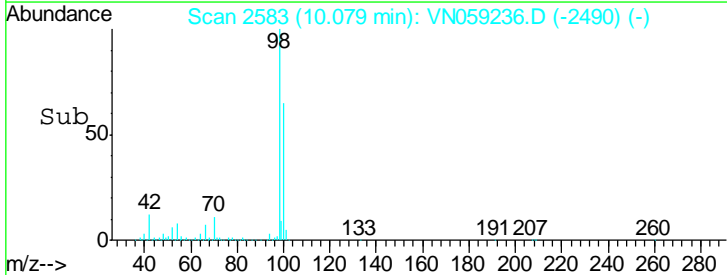
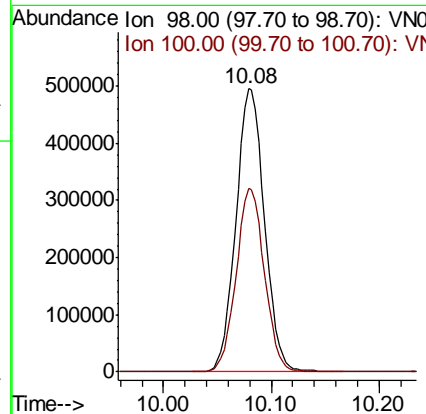
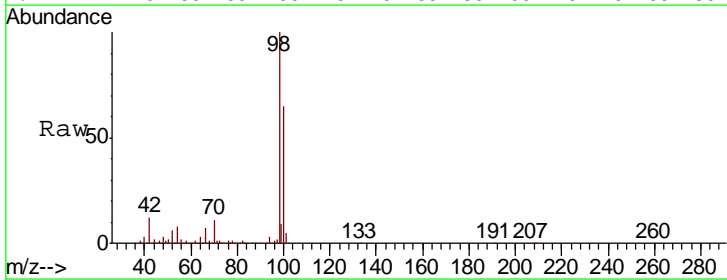
**Manual Integrations**  
**APPROVED**

MMDadoda  
 11/15/2019 11:39:43 AM

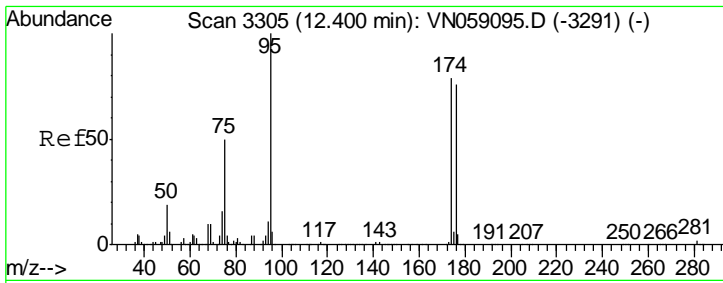


#50  
 Toluene-d8  
 Concen: 51.652 ug/l  
 RT: 10.08 min Scan# 2583  
 Delta R.T. 0.00 min  
 Lab File: VN059236.D  
 Acq: 14 Nov 2019 16:06

Tgt Ion	Resp	Lower	Upper
98	914685		
100	64.4	52.2	78.2





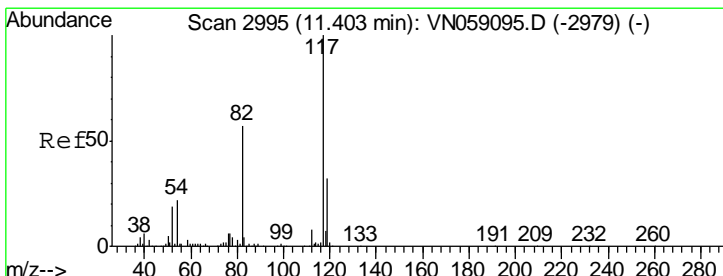
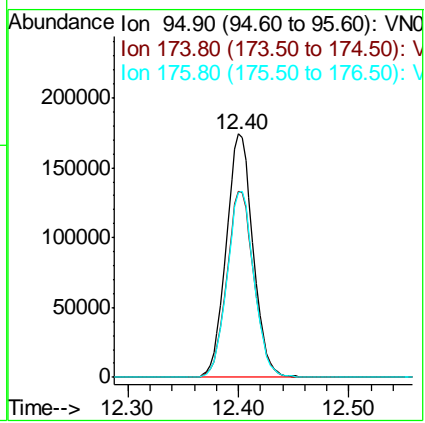
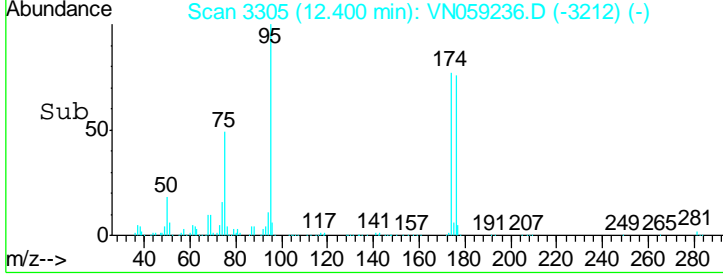
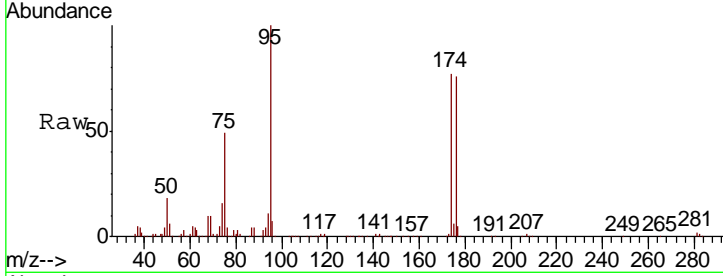


#62  
 4-Bromofluorobenzene  
 Concen: 46.156 ug/l  
 RT: 12.40 min Scan# 3305  
 Delta R.T. 0.00 min  
 Lab File: VN059236.D  
 Acq: 14 Nov 2019 16:06

Instrument : MSVOA\_N  
 Client Sampled : MW-318D-SRI4

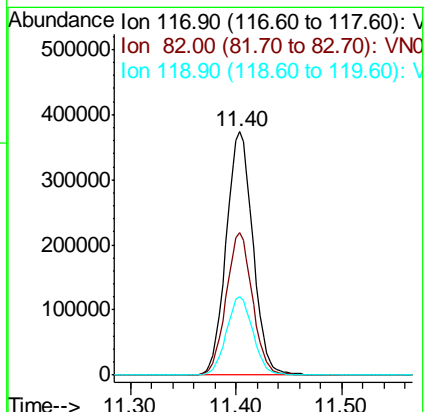
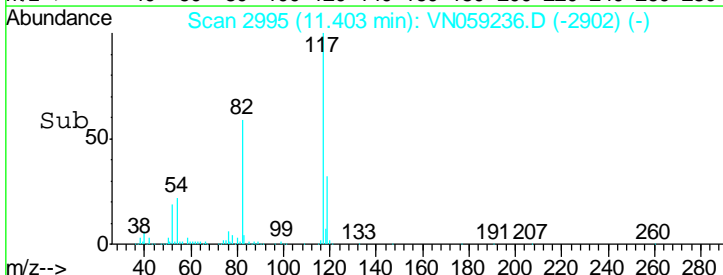
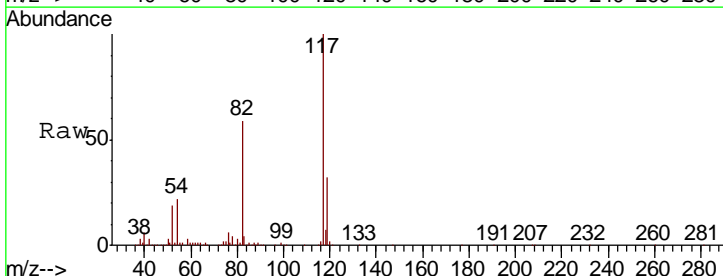
Tgt Ion	Resp	Lower	Upper
95	100		
174	77.0	0.0	158.2
176	76.5	0.0	151.8

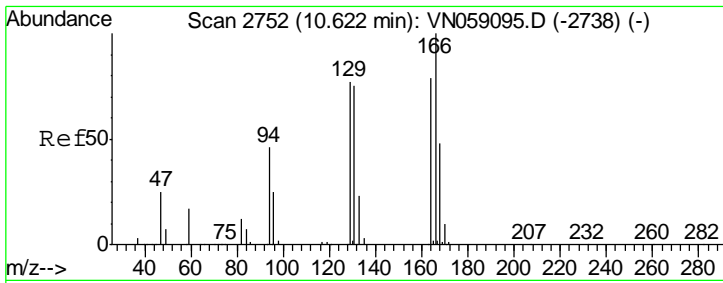
Manual Integrations  
**APPROVED**  
 MMDadoda  
 11/15/2019 11:39:43 AM



#63  
 Chlorobenzene-d5  
 Concen: 50.000 ug/l  
 RT: 11.40 min Scan# 2995  
 Delta R.T. 0.00 min  
 Lab File: VN059236.D  
 Acq: 14 Nov 2019 16:06

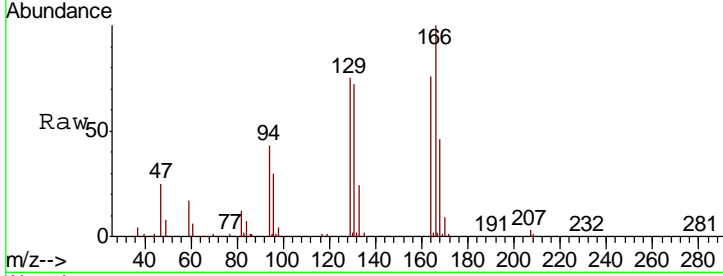
Tgt Ion	Resp	Lower	Upper
117	100		
82	58.6	45.8	68.8
119	32.4	25.8	38.6





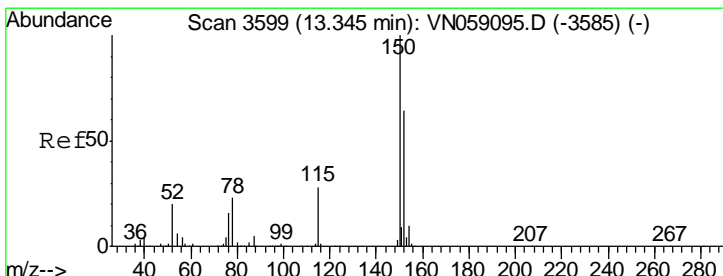
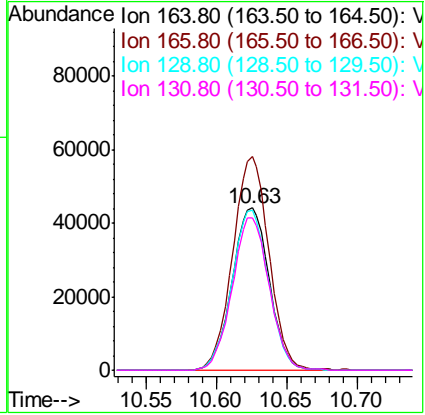
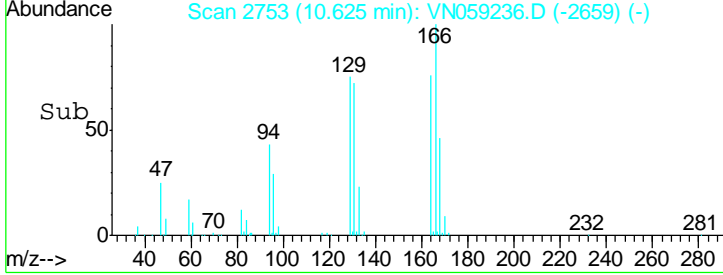
#64  
 Tetrachloroethene  
 Concen: 18.351 ug/l  
 RT: 10.63 min Scan# 2753  
 Delta R.T. 0.00 min  
 Lab File: VN059236.D  
 Acq: 14 Nov 2019 16:06

Instrument : MSVOA\_N  
 Client Sampled : MW-318D-SRI4

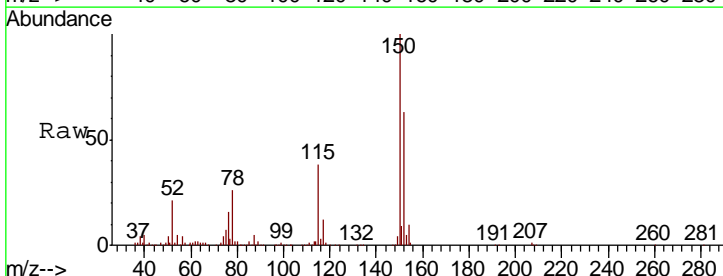


Tgt Ion	Resp	Lower	Upper
164	100		
166	131.8	101.5	152.3
129	98.4	78.3	117.5
131	94.3	75.9	113.9

Manual Integrations  
**APPROVED**  
 MMDadoda  
 11/15/2019 11:39:43 AM



#72  
 1,4-Dichlorobenzene-d4  
 Concen: 50.000 ug/l  
 RT: 13.35 min Scan# 3599  
 Delta R.T. 0.00 min  
 Lab File: VN059236.D  
 Acq: 14 Nov 2019 16:06



Tgt Ion	Resp	Lower	Upper
152	100		
115	60.1	29.4	88.2
150	159.0	0.0	345.8

