

Data Path : Z:\voasrv\HPCHEM1\MSVOA_N\Data\VN111524\
 Data File : VN084869.D
 Acq On : 15 Nov 2024 14:59
 Operator : JC\MD
 Sample : VN1115WBSD01
 Misc : 5.0mL/MSVOA_N/WATER
 ALS Vial : 5 Sample Multiplier: 1

Instrument :
 MSVOA_N
 ClientSampleId :
 VN1115WBSD01

Quant Time: Nov 15 22:24:27 2024
 Quant Method : Z:\voasrv\HPCHEM1\MSVOA_N\methods\624N103124W.M
 Quant Title : METHOD 624 VOLATILE ORGANIC ANALYSIS
 QLast Update : Fri Nov 01 02:38:04 2024
 Response via : Initial Calibration

Compound	R.T.	QIon	Response	Conc	Units	Dev(Min)
Internal Standards						
1) Bromochloromethane	7.806	128	27777	30.000	ug/l	0.00
28) 1,4-Difluorobenzene	9.100	114	143562	30.000	ug/l	0.00
57) Chlorobenzene-d5	11.865	117	132133	30.000	ug/l	0.00
System Monitoring Compounds						
27) 1,2-Dichloroethane-d4	8.571	65	66747	29.890	ug/l	0.00
Spiked Amount	30.000	Range 91 - 110	Recovery =	99.633%		
60) 4-Bromofluorobenzene	12.847	95	70609	31.035	ug/l	0.00
Spiked Amount	30.000	Range 63 - 112	Recovery =	103.467%		
63) Toluene-d8	10.565	98	185283	29.621	ug/l	0.00
Spiked Amount	30.000	Range 91 - 112	Recovery =	98.733%		
Target Compounds						
						Qvalue
2) Dichlorodifluoromethane	2.124	85	32686	20.232	ug/l	91
3) Chloromethane	2.359	50	38666	19.879	ug/l	98
4) Vinyl Chloride	2.512	62	38205	21.152	ug/l	95
5) Bromomethane	2.900	94	20669	22.546	ug/l	94
6) Chloroethane	3.071	64	26367	22.233	ug/l	98
7) Trichlorofluoromethane	3.477	101	59973	20.445	ug/l	98
8) Diethyl Ether	3.953	74	19853	18.974	ug/l	94
9) 1,1,2-Trichlorotrifluo...	4.365	101	33677	20.315	ug/l	95
10) 1,1-Dichloroethene	4.324	96	31038	19.173	ug/l	89
11) Methyl Iodide	4.571	142	44360	19.938	ug/l	84
12) Methyl Acetate	5.024	43	41237	16.343	ug/l	91
13) Acrolein	4.177	56	36553	117.472	ug/l	99
14) Acrylonitrile	5.718	53	80531	97.557	ug/l	97
15) Acetone	4.424	58	20069	94.620	ug/l	95
16) Carbon Disulfide	4.700	76	86729	18.208	ug/l	100
17) Allyl chloride	5.012	41	47364	17.171	ug/l	99
18) Methylene Chloride	5.271	84	36522	19.253	ug/l	95
19) trans-1,2-Dichloroethene	5.777	96	31643	18.649	ug/l	95
20) Diisopropyl ether	6.671	45	101553	18.391	ug/l	96
21) 1,1-Dichloroethane	6.559	63	61629	18.559	ug/l	95
22) cis-1,2-Dichloroethene	7.482	96	38262	18.888	ug/l	96
23) tert-Butyl Alcohol	5.541	59	26430	91.712	ug/l #	100
24) Methyl tert-Butyl Ether	5.788	73	101702	19.428	ug/l	98
25) Chloroform	7.959	83	66435	19.527	ug/l	97
26) Cyclohexane	8.247	56	47352	18.668	ug/l #	96
29) 1,1-Dichloropropene	8.365	75	42918	19.848	ug/l	98
30) 2-Butanone	7.477	43	100555	100.812	ug/l	98
31) 2,2-Dichloropropane	7.488	77	57944	21.952	ug/l	99
32) 1,1,1-Trichloroethane	8.165	97	61181	20.826	ug/l	98
33) Carbon Tetrachloride	8.353	117	51647	20.603	ug/l	98
34) Benzene	8.606	78	142162	19.890	ug/l #	93
35) Methacrylonitrile	7.777	41	22520	19.050	ug/l	97
36) 1,2-Dichloroethane	8.665	62	48331	20.334	ug/l	100
37) Trichloroethene	9.347	130	31820	19.735	ug/l	95
38) Methylcyclohexane	9.594	83	44082	18.937	ug/l	97
39) 1,2-Dichloropropane	9.618	63	33278	19.342	ug/l	97
40) Dibromomethane	9.706	93	24619	20.454	ug/l	96
41) Bromodichloromethane	9.882	83	50075	19.407	ug/l	99
42) Vinyl Acetate	6.600	43	354614	95.113	ug/l	99

Data Path : Z:\voasrv\HPCHEM1\MSVOA_N\Data\VN111524\
 Data File : VN084869.D
 Acq On : 15 Nov 2024 14:59
 Operator : JC\MD
 Sample : VN1115WBSD01
 Misc : 5.0mL/MSVOA_N/WATER
 ALS Vial : 5 Sample Multiplier: 1

Instrument :
 MSVOA_N
 ClientSampleId :
 VN1115WBSD01

Quant Time: Nov 15 22:24:27 2024
 Quant Method : Z:\voasrv\HPCHEM1\MSVOA_N\methods\624N103124W.M
 Quant Title : METHOD 624 VOLATILE ORGANIC ANALYSIS
 QLast Update : Fri Nov 01 02:38:04 2024
 Response via : Initial Calibration

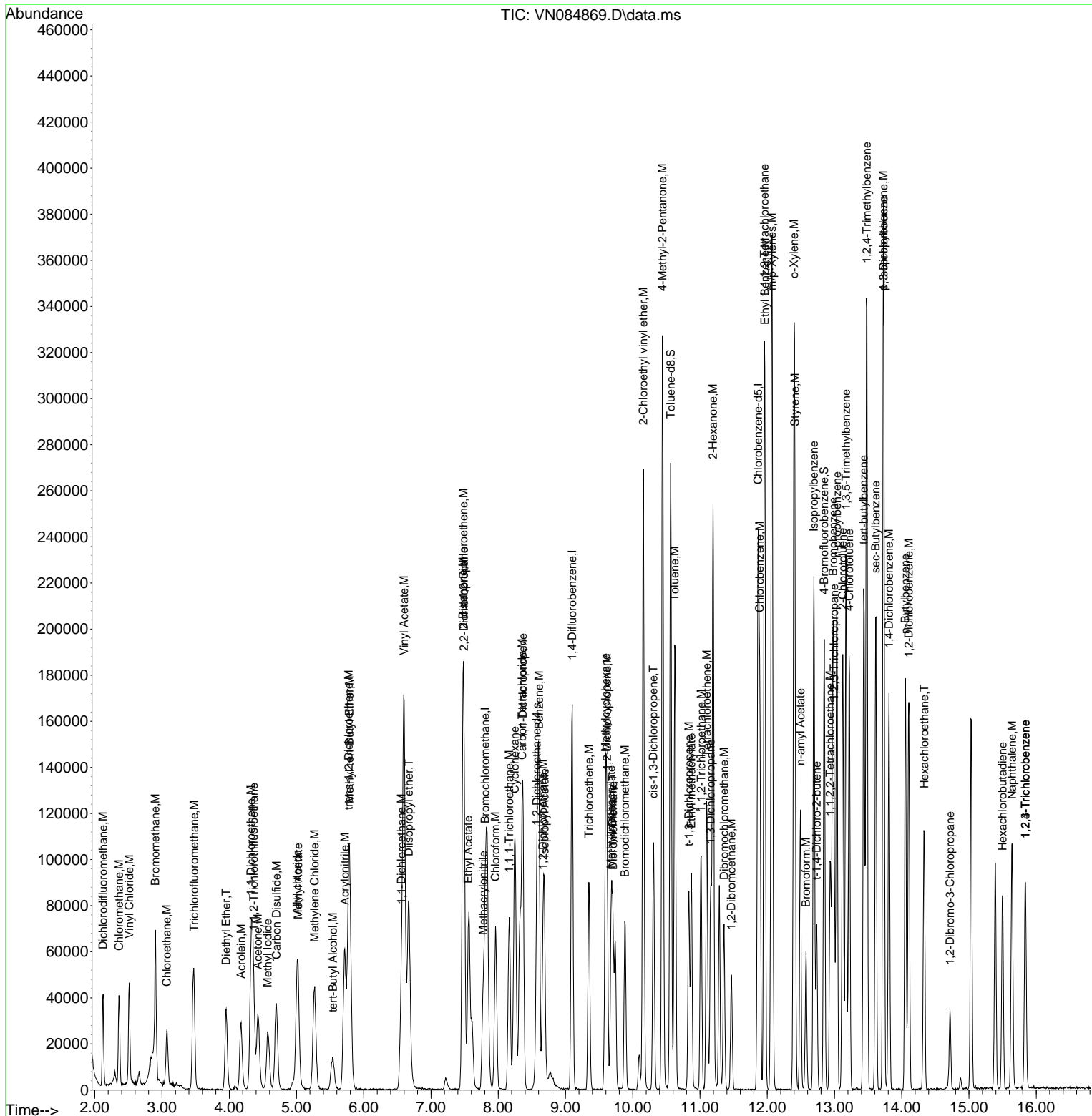
Compound	R.T.	QIon	Response	Conc	Units	Dev(Min)
43) Ethyl Acetate	7.553	43	42917	20.477	ug/l	98
44) Isopropyl Acetate	8.688	43	73627	17.348	ug/l	96
45) 1,4-Dioxane	9.700	88	11947	421.654	ug/l	93
46) Methyl methacrylate	9.676	41	32421	19.010	ug/l	90
47) n-amyl Acetate	12.494	43	59136	18.657	ug/l	98
48) t-1,3-Dichloropropene	10.835	75	49378	19.380	ug/l	97
49) cis-1,3-Dichloropropene	10.306	75	55708	20.401	ug/l	96
50) 1,1,2-Trichloroethane	11.018	97	34274	21.229	ug/l	96
51) Ethyl methacrylate	10.871	69	49829	20.023	ug/l	94
52) 1,3-Dichloropropane	11.159	76	55741	19.891	ug/l	98
53) Dibromochloromethane	11.359	129	38777	20.524	ug/l	96
54) 1,2-Dibromoethane	11.465	107	34963	21.412	ug/l	100
55) 2-Chloroethyl vinyl ether	10.159	63	118346	96.998	ug/l	99
56) Bromoform	12.576	173	26958	21.287	ug/l	97
58) 4-Methyl-2-Pentanone	10.441	43	214726	103.008	ug/l	98
59) 2-Hexanone	11.194	43	158511	103.844	ug/l	98
61) Tetrachloroethene	11.100	164	29049	21.006	ug/l	98
62) Toluene	10.623	91	151208	20.092	ug/l	98
64) Chlorobenzene	11.888	112	90954	20.020	ug/l	97
65) 1,1,1,2-Tetrachloroethane	11.959	131	35740	21.405	ug/l	97
66) Ethyl Benzene	11.965	91	153019	19.347	ug/l	96
67) m/p-Xylenes	12.070	106	122503	40.456	ug/l	99
68) o-Xylene	12.400	106	57915	19.828	ug/l	98
69) Styrene	12.412	104	100487	20.518	ug/l	98
70) Isopropylbenzene	12.694	105	144485	19.912	ug/l	98
71) 1,1,2,2-Tetrachloroethane	12.935	83	50122	21.312	ug/l	98
72) 1,2,3-Trichloropropane	12.994	75	62597	31.170	ug/l	68
73) Bromobenzene	12.982	156	38814	20.740	ug/l	98
74) n-propylbenzene	13.035	91	173358	20.432	ug/l	99
75) 2-Chlorotoluene	13.123	91	114083	20.647	ug/l	98
76) 1,3,5-Trimethylbenzene	13.170	105	128489	20.725	ug/l	99
77) t-1,4-Dichloro-2-butene	12.735	75	16818	20.419	ug/l	90
78) 4-Chlorotoluene	13.217	91	113835	20.391	ug/l	99
79) tert-butylbenzene	13.435	119	103008	20.092	ug/l	98
80) 1,2,4-Trimethylbenzene	13.482	105	131357	21.002	ug/l	98
81) sec-Butylbenzene	13.611	105	143056	20.250	ug/l	98
82) p-Isopropyltoluene	13.729	119	121558	20.478	ug/l	100
83) 1,3-Dichlorobenzene	13.729	146	70929	20.493	ug/l	97
84) 1,4-Dichlorobenzene	13.811	146	71089	20.786	ug/l	98
85) n-Butylbenzene	14.053	91	98151	19.687	ug/l	98
86) Hexachloroethane	14.335	117	23621	19.457	ug/l	94
87) 1,2-Dichlorobenzene	14.106	146	71901	21.082	ug/l	98
88) 1,2-Dibromo-3-Chloropr...	14.717	75	9680	21.331	ug/l	96
89) 1,2,4-Trichlorobenzene	15.841	180	33559	20.209	ug/l	97
90) Hexachlorobutadiene	15.500	225	16226	22.369	ug/l	97
91) Naphthalene	15.641	128	101921	19.218	ug/l	100
92) 1,2,3-Trichlorobenzene	15.841	180	33559	20.209	ug/l	97

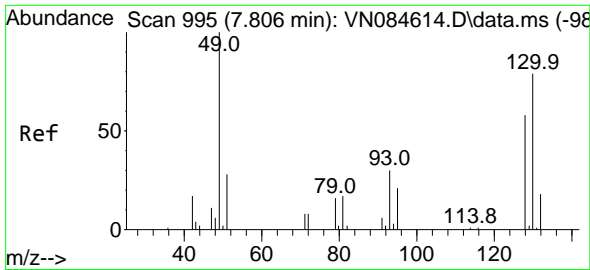
(#) = qualifier out of range (m) = manual integration (+) = signals summed

Data Path : Z:\voasrv\HPCHEM1\MSVOA_N\Data\VN111524\
 Data File : VN084869.D
 Acq On : 15 Nov 2024 14:59
 Operator : JC\MD
 Sample : VN1115WBSD01
 Misc : 5.0mL/MSVOA_N/WATER
 ALS Vial : 5 Sample Multiplier: 1

Instrument :
 MSVOA_N
 ClientSampleId :
 VN1115WBSD01

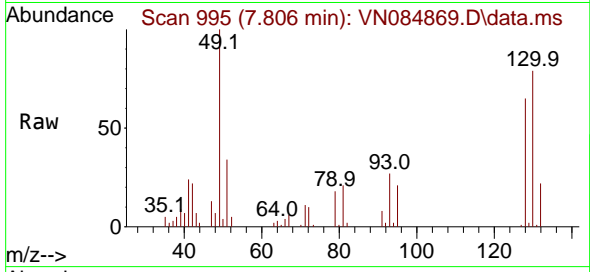
Quant Time: Nov 15 22:24:27 2024
 Quant Method : Z:\voasrv\HPCHEM1\MSVOA_N\methods\624N103124W.M
 Quant Title : METHOD 624 VOLATILE ORGANIC ANALYSIS
 QLast Update : Fri Nov 01 02:38:04 2024
 Response via : Initial Calibration





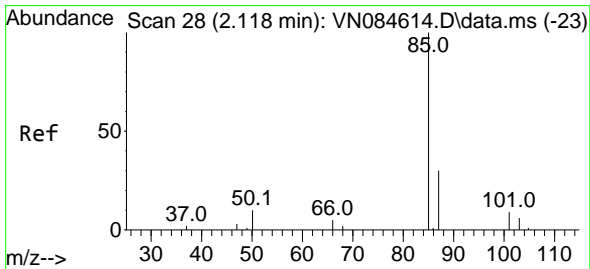
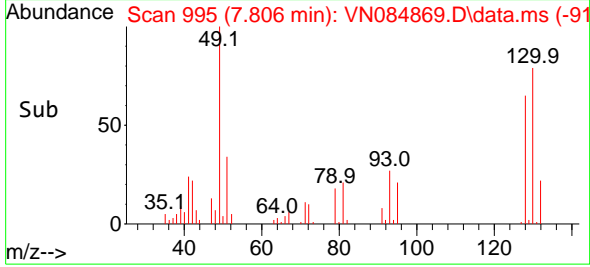
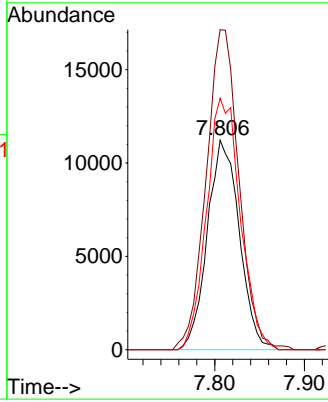
#1
 Bromochloromethane
 Concen: 30.000 ug/l
 RT: 7.806 min Scan# 91
 Delta R.T. -0.000 min
 Lab File: VN084869.D
 Acq: 15 Nov 2024 14:59

Instrument :
 MSVOA_N
 ClientSampleId :
 VN1115WBSD01



Tgt Ion:128 Resp: 27777

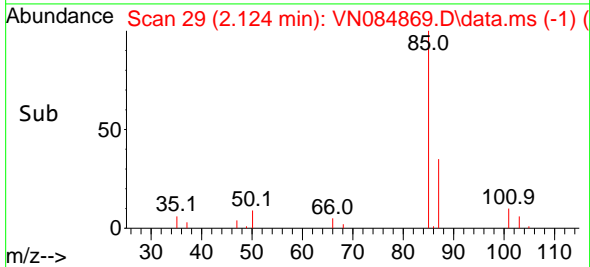
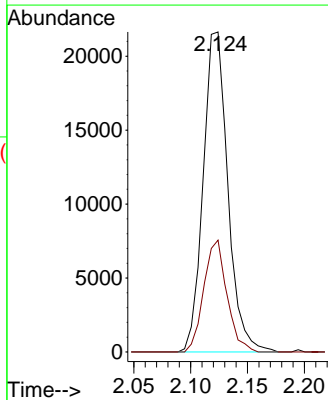
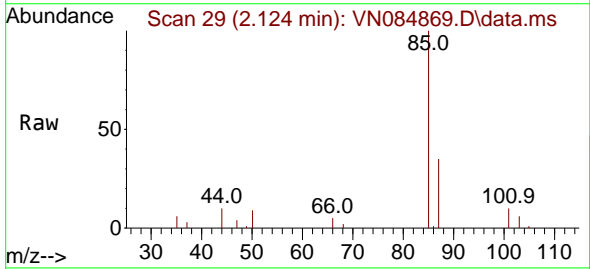
Ion	Ratio	Lower	Upper
128	100		
49	156.1	0.0	427.0
130	126.6	0.0	322.2

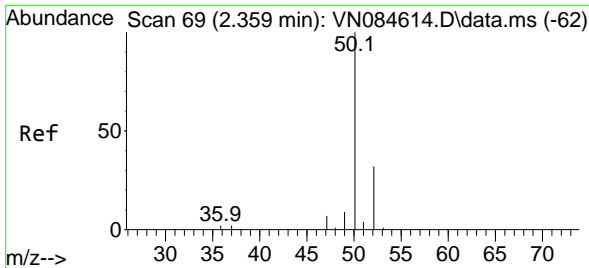


#2
 Dichlorodifluoromethane
 Concen: 20.232 ug/l
 RT: 2.124 min Scan# 29
 Delta R.T. 0.006 min
 Lab File: VN084869.D
 Acq: 15 Nov 2024 14:59

Tgt Ion: 85 Resp: 32686

Ion	Ratio	Lower	Upper
85	100		
87	35.0	14.9	44.9

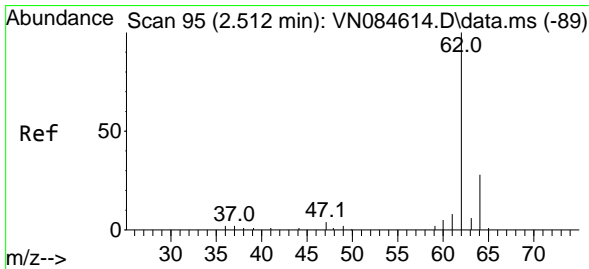
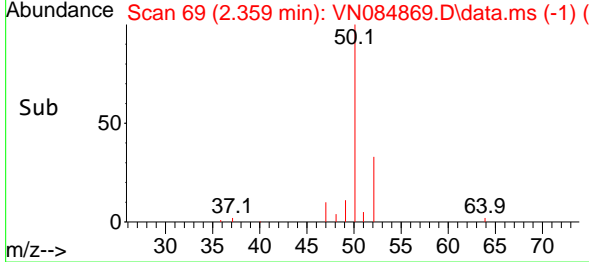
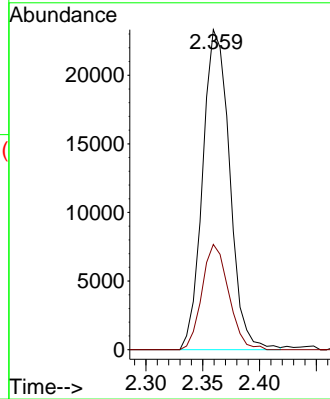
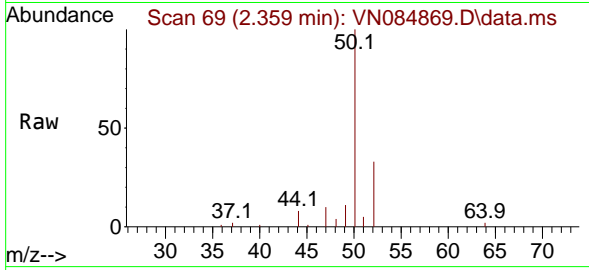




#3
 Chloromethane
 Concen: 19.879 ug/l
 RT: 2.359 min Scan# 69
 Delta R.T. -0.000 min
 Lab File: VN084869.D
 Acq: 15 Nov 2024 14:59

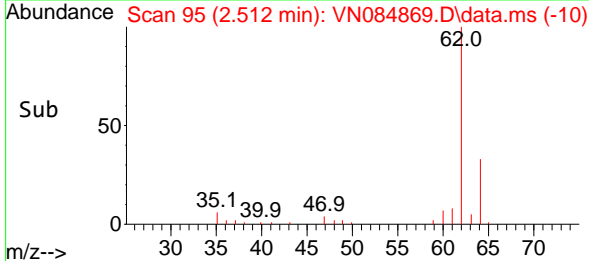
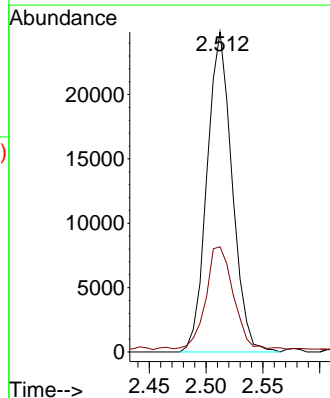
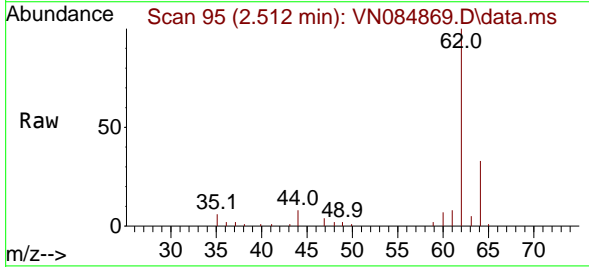
Instrument : MSVOA_N
 ClientSampleId : VN1115WBSD01

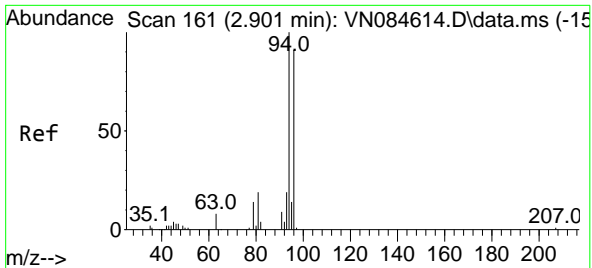
Tgt Ion: 50 Resp: 38666
 Ion Ratio Lower Upper
 50 100
 52 32.9 25.5 38.3



#4
 Vinyl Chloride
 Concen: 21.152 ug/l
 RT: 2.512 min Scan# 95
 Delta R.T. -0.000 min
 Lab File: VN084869.D
 Acq: 15 Nov 2024 14:59

Tgt Ion: 62 Resp: 38205
 Ion Ratio Lower Upper
 62 100
 64 31.5 23.1 34.7

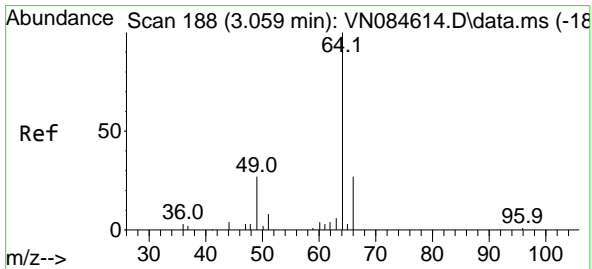
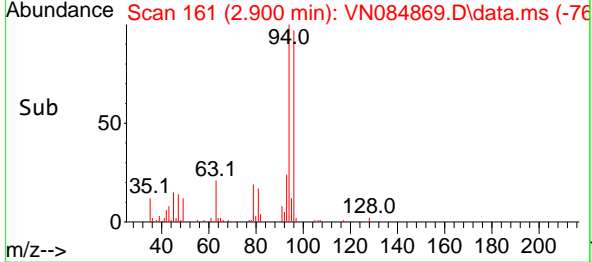
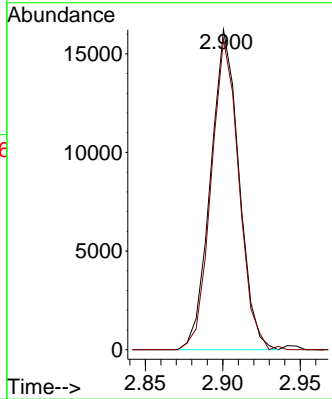
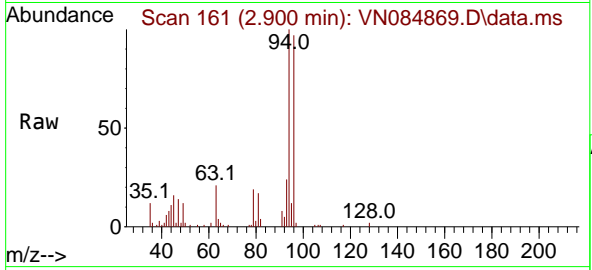




#5
 Bromomethane
 Concen: 22.546 ug/l
 RT: 2.900 min Scan# 11
 Delta R.T. -0.000 min
 Lab File: VN084869.D
 Acq: 15 Nov 2024 14:59

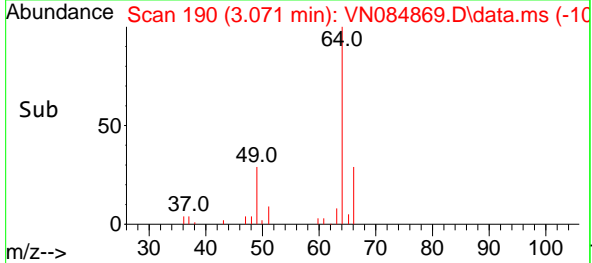
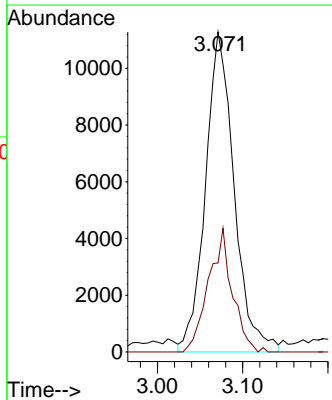
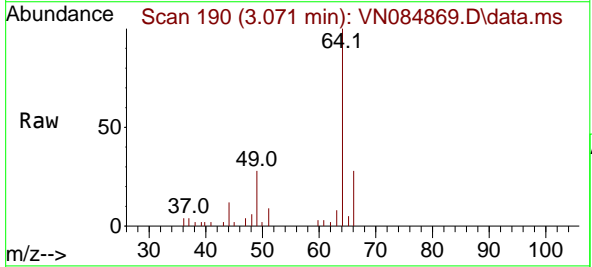
Instrument : MSVOA_N
 ClientSampleId : VN1115WBSD01

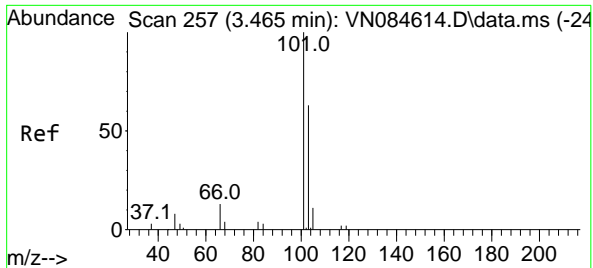
Tgt Ion: 94 Resp: 20669
 Ion Ratio Lower Upper
 94 100
 96 97.0 72.7 109.1



#6
 Chloroethane
 Concen: 22.233 ug/l
 RT: 3.071 min Scan# 190
 Delta R.T. 0.012 min
 Lab File: VN084869.D
 Acq: 15 Nov 2024 14:59

Tgt Ion: 64 Resp: 26367
 Ion Ratio Lower Upper
 64 100
 66 28.5 22.1 33.1

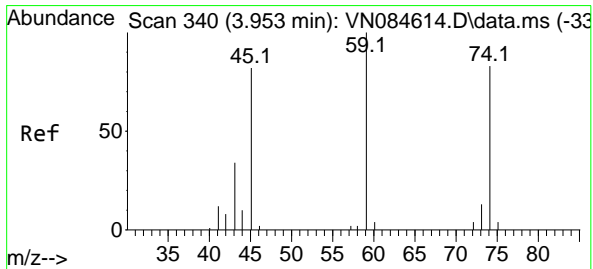
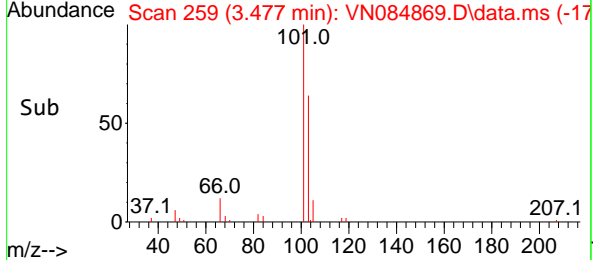
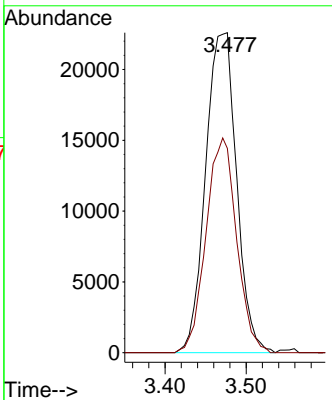
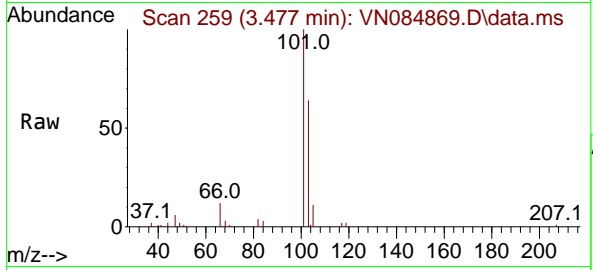




#7
 Trichlorofluoromethane
 Concen: 20.445 ug/l
 RT: 3.477 min Scan# 21
 Delta R.T. 0.012 min
 Lab File: VN084869.D
 Acq: 15 Nov 2024 14:59

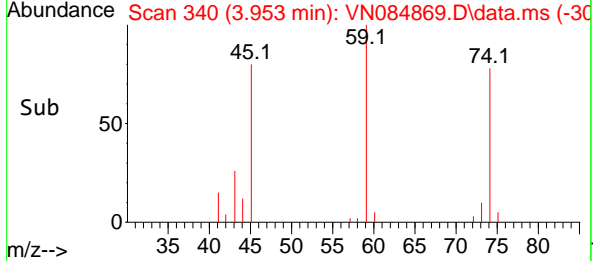
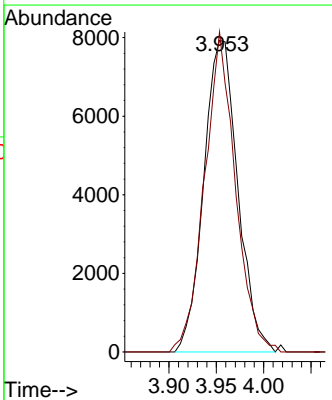
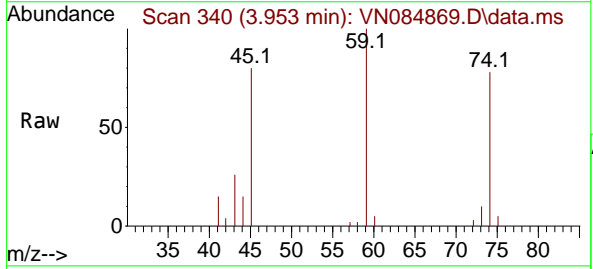
Instrument : MSVOA_N
 ClientSampleId : VN1115WBSD01

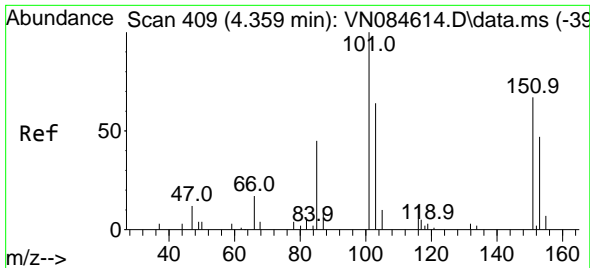
Tgt Ion:101 Resp: 59973
 Ion Ratio Lower Upper
 101 100
 103 63.8 50.1 75.1



#8
 Diethyl Ether
 Concen: 18.974 ug/l
 RT: 3.953 min Scan# 340
 Delta R.T. -0.000 min
 Lab File: VN084869.D
 Acq: 15 Nov 2024 14:59

Tgt Ion: 74 Resp: 19853
 Ion Ratio Lower Upper
 74 100
 45 93.0 19.8 178.4



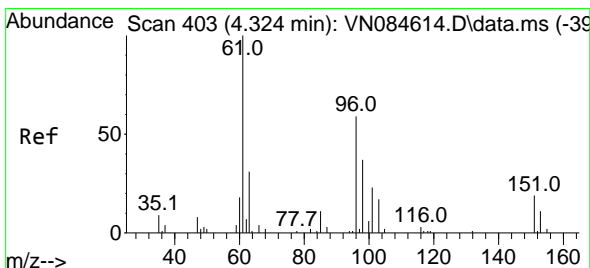
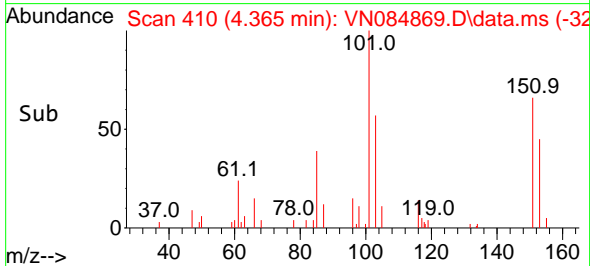
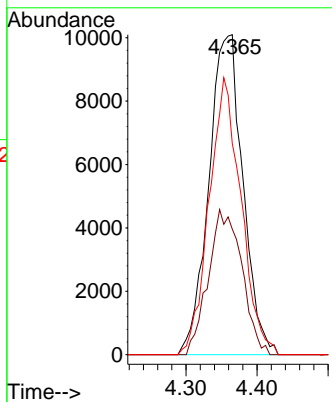
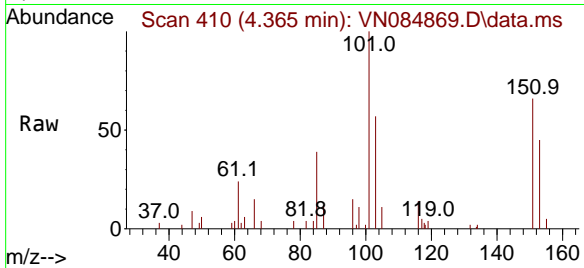


#9
 1,1,2-Trichlorotrifluoroethane
 Concen: 20.315 ug/l
 RT: 4.365 min Scan# 410
 Delta R.T. 0.006 min
 Lab File: VN084869.D
 Acq: 15 Nov 2024 14:59

Instrument :
 MSVOA_N
 ClientSampleId :
 VN1115WBSD01

Tgt Ion:101 Resp: 33677

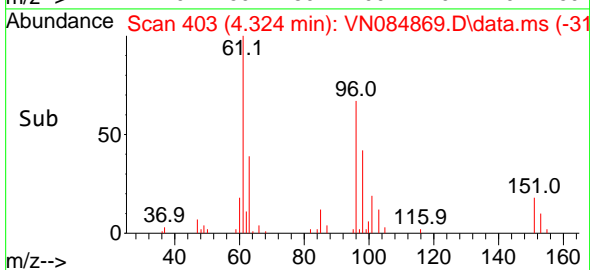
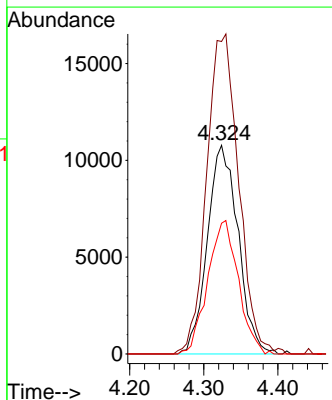
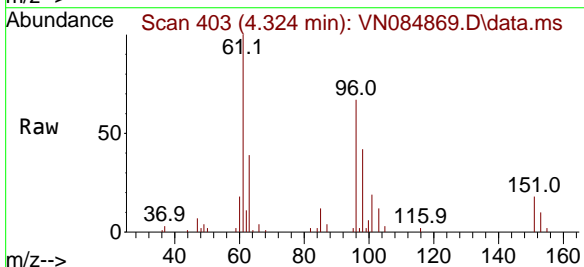
Ion	Ratio	Lower	Upper
101	100		
85	44.5	0.0	89.6
151	80.9	0.0	149.4

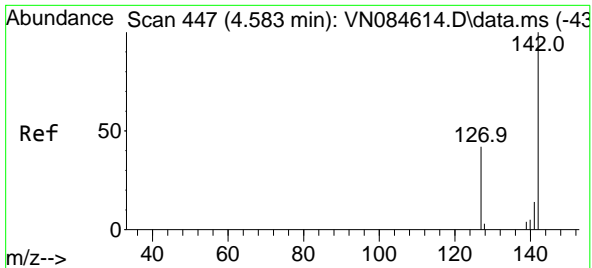


#10
 1,1-Dichloroethene
 Concen: 19.173 ug/l
 RT: 4.324 min Scan# 403
 Delta R.T. -0.000 min
 Lab File: VN084869.D
 Acq: 15 Nov 2024 14:59

Tgt Ion: 96 Resp: 31038

Ion	Ratio	Lower	Upper
96	100		
61	148.1	135.1	202.7
98	62.6	50.4	75.6



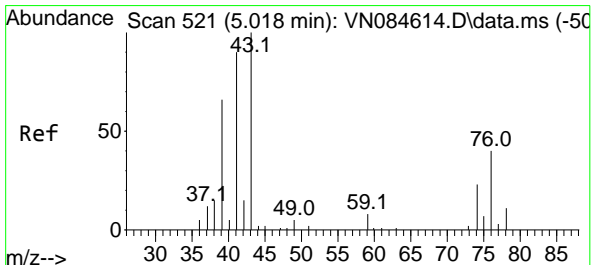
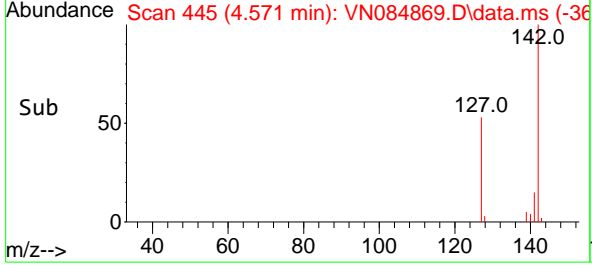
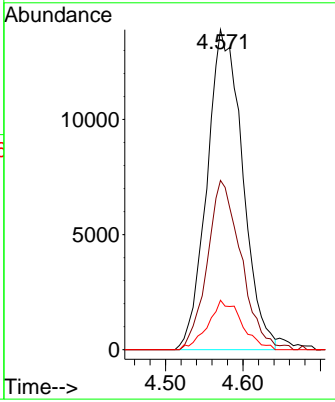
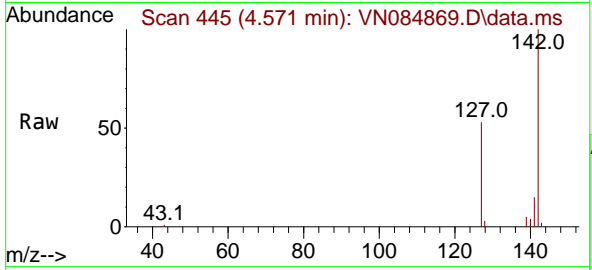


#11
 Methyl Iodide
 Concen: 19.938 ug/l
 RT: 4.571 min Scan# 445
 Delta R.T. -0.012 min
 Lab File: VN084869.D
 Acq: 15 Nov 2024 14:59

Instrument : MSVOA_N
 ClientSampleId : VN1115WBSD01

Tgt Ion:142 Resp: 44360

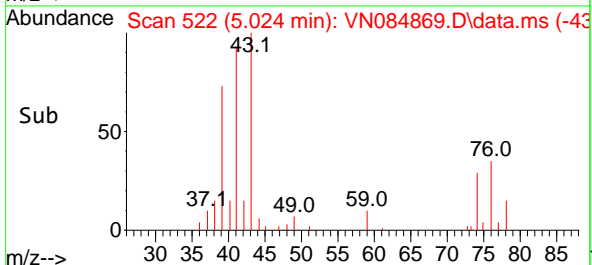
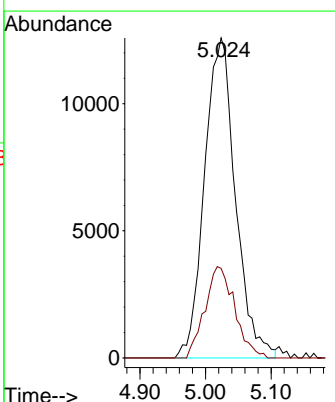
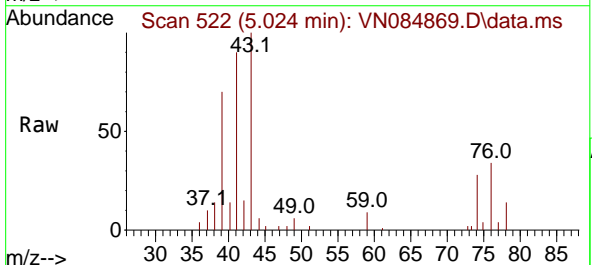
Ion	Ratio	Lower	Upper
142	100		
127	53.0	20.3	60.9
141	15.7	6.9	20.7

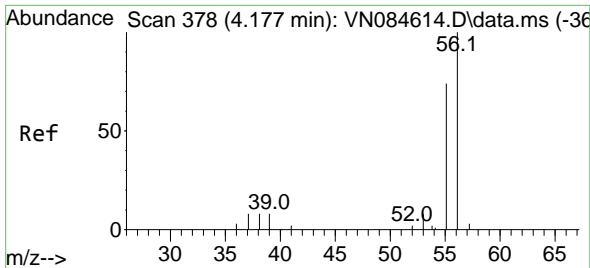


#12
 Methyl Acetate
 Concen: 16.343 ug/l
 RT: 5.024 min Scan# 522
 Delta R.T. 0.006 min
 Lab File: VN084869.D
 Acq: 15 Nov 2024 14:59

Tgt Ion: 43 Resp: 41237

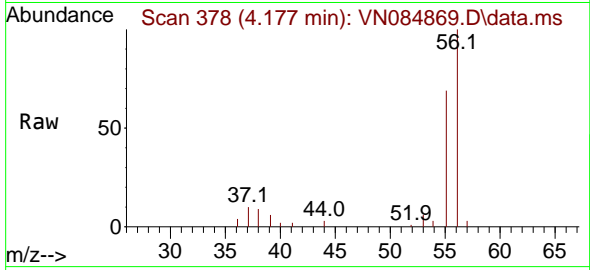
Ion	Ratio	Lower	Upper
43	100		
74	28.3	19.0	28.4



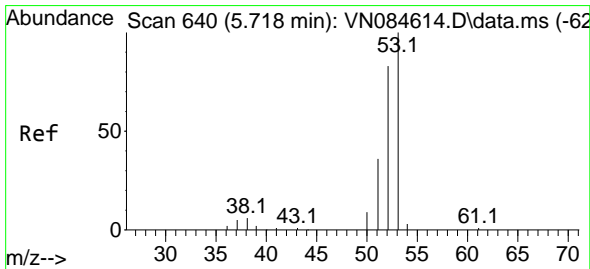
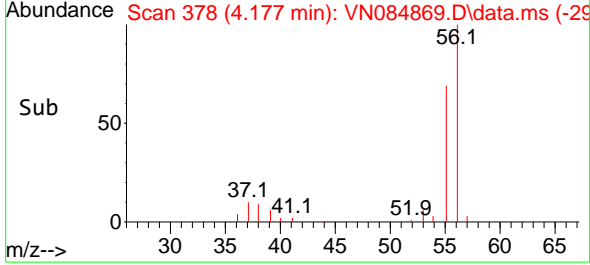
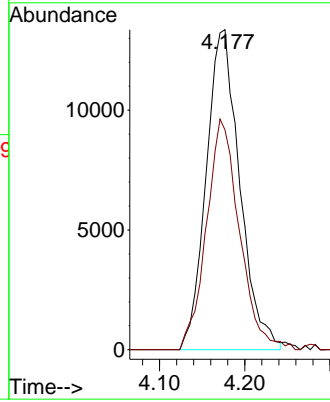


#13
 Acrolein
 Concen: 117.472 ug/l
 RT: 4.177 min Scan# 31
 Delta R.T. -0.000 min
 Lab File: VN084869.D
 Acq: 15 Nov 2024 14:59

Instrument :
 MSVOA_N
 ClientSampleId :
 VN1115WBSD01

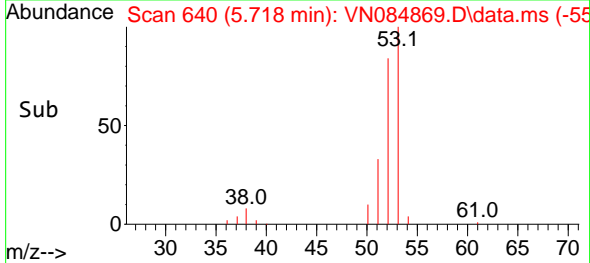
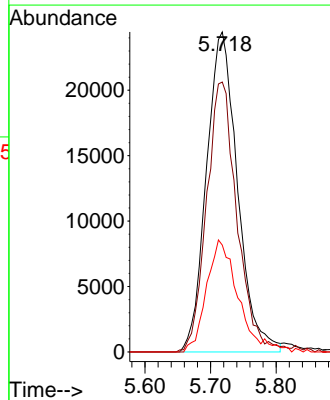
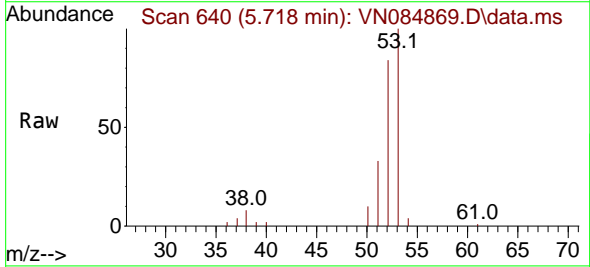


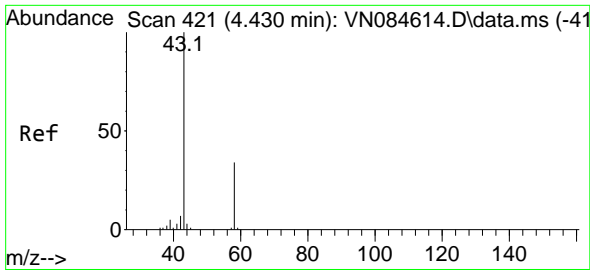
Tgt Ion: 56 Resp: 36553
 Ion Ratio Lower Upper
 56 100
 55 70.3 56.7 85.1



#14
 Acrylonitrile
 Concen: 97.557 ug/l
 RT: 5.718 min Scan# 640
 Delta R.T. -0.000 min
 Lab File: VN084869.D
 Acq: 15 Nov 2024 14:59

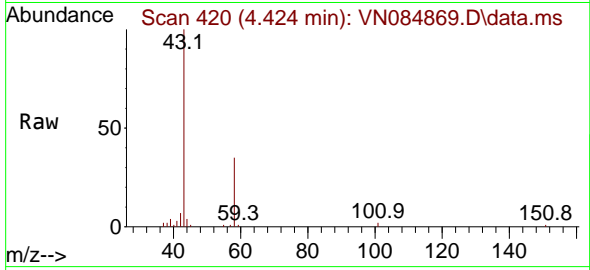
Tgt Ion: 53 Resp: 80531
 Ion Ratio Lower Upper
 53 100
 52 81.1 41.6 124.9
 51 34.0 18.2 54.6



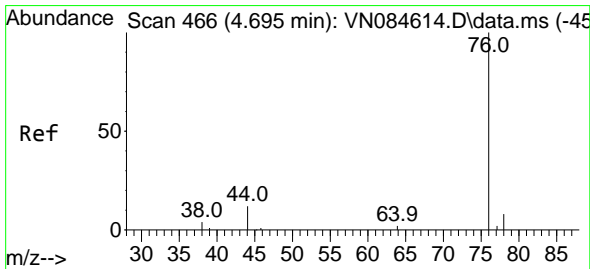
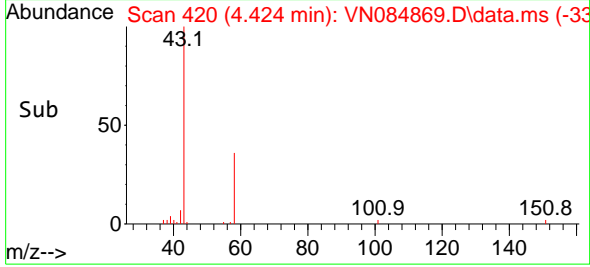
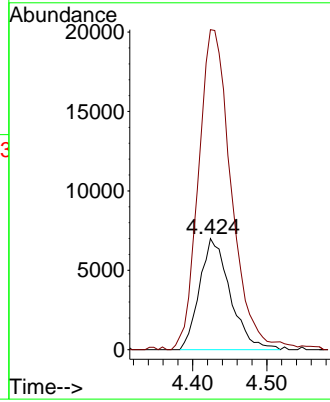


#15
 Acetone
 Concen: 94.620 ug/l
 RT: 4.424 min Scan# 41
 Delta R.T. -0.006 min
 Lab File: VN084869.D
 Acq: 15 Nov 2024 14:59

Instrument :
 MSVOA_N
 ClientSampleId :
 VN1115WBSD01

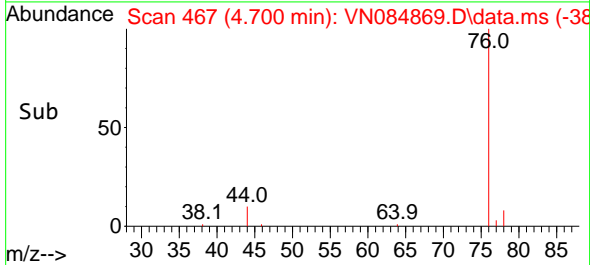
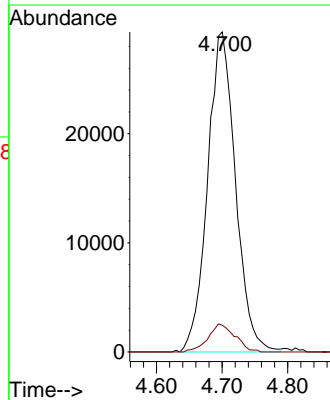
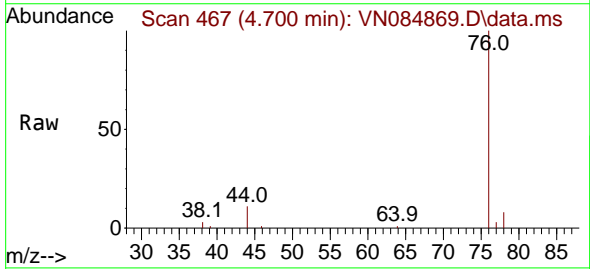


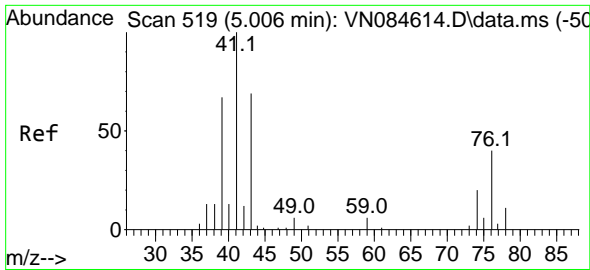
Tgt Ion: 58 Resp: 20069
 Ion Ratio Lower Upper
 58 100
 43 281.4 233.0 349.6



#16
 Carbon Disulfide
 Concen: 18.208 ug/l
 RT: 4.700 min Scan# 467
 Delta R.T. 0.006 min
 Lab File: VN084869.D
 Acq: 15 Nov 2024 14:59

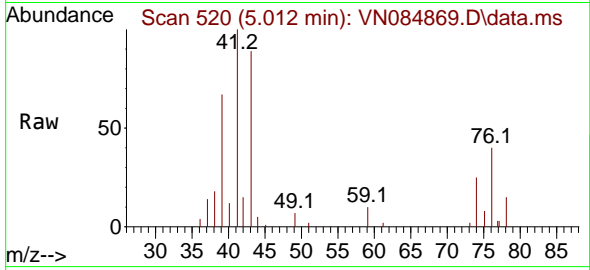
Tgt Ion: 76 Resp: 86729
 Ion Ratio Lower Upper
 76 100
 78 8.4 6.6 9.8



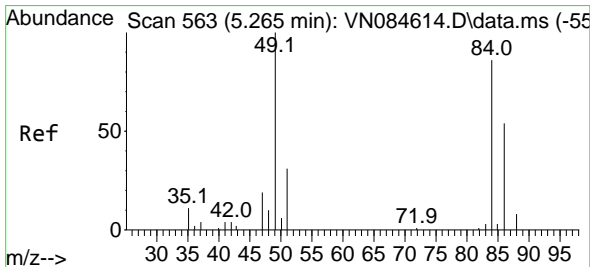
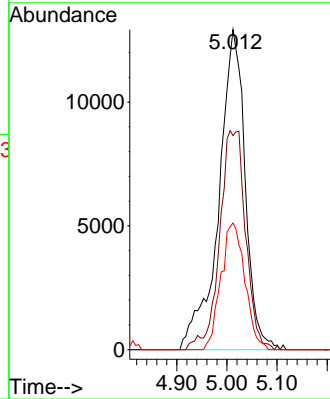
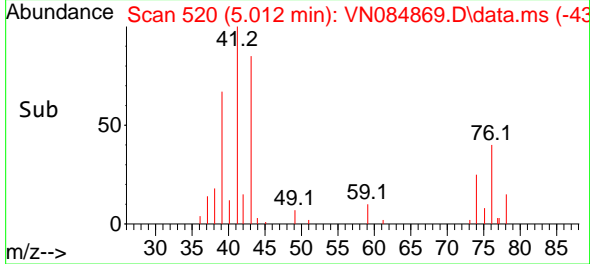


#17
 Allyl chloride
 Concen: 17.171 ug/l
 RT: 5.012 min Scan# 519
 Delta R.T. 0.006 min
 Lab File: VN084869.D
 Acq: 15 Nov 2024 14:59

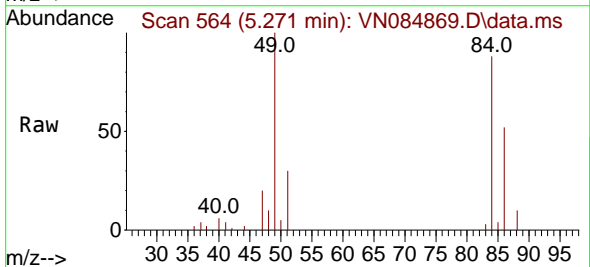
Instrument :
 MSVOA_N
 ClientSampleId :
 VN1115WBSD01



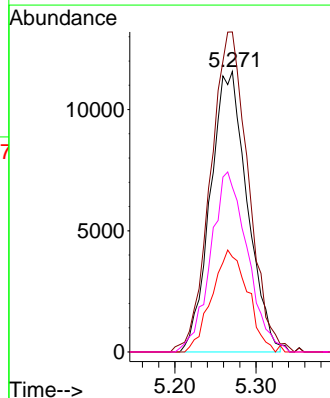
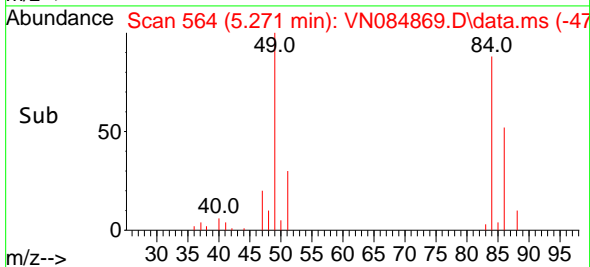
Tgt Ion: 41 Resp: 47364
 Ion Ratio Lower Upper
 41 100
 39 66.9 33.4 100.2
 76 39.6 20.2 60.6

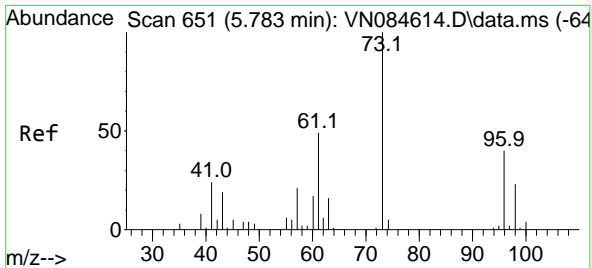


#18
 Methylene Chloride
 Concen: 19.253 ug/l
 RT: 5.271 min Scan# 564
 Delta R.T. 0.006 min
 Lab File: VN084869.D
 Acq: 15 Nov 2024 14:59



Tgt Ion: 84 Resp: 36522
 Ion Ratio Lower Upper
 84 100
 49 111.4 93.0 139.6
 51 33.9 28.9 43.3
 86 57.4 50.6 76.0

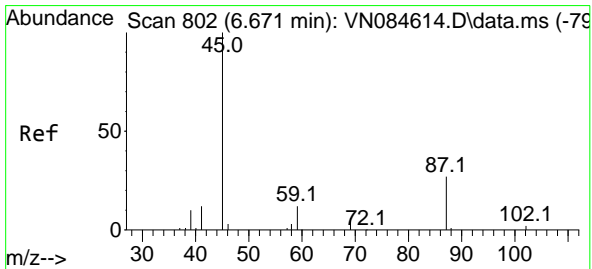
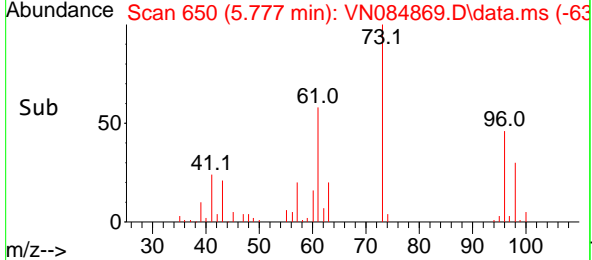
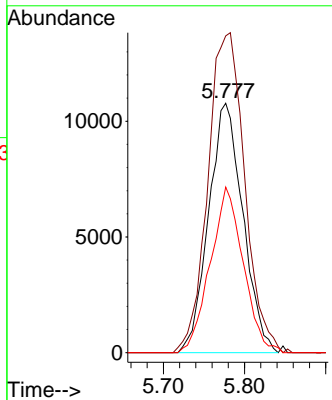
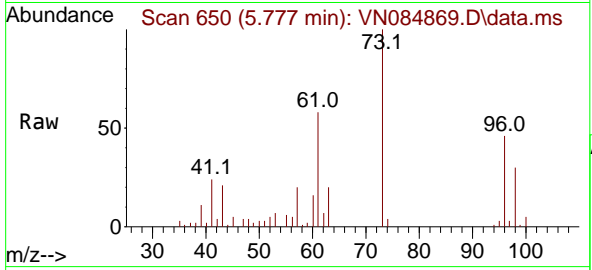




#19
 trans-1,2-Dichloroethene
 Concen: 18.649 ug/l
 RT: 5.777 min Scan# 611
 Delta R.T. -0.006 min
 Lab File: VN084869.D
 Acq: 15 Nov 2024 14:59

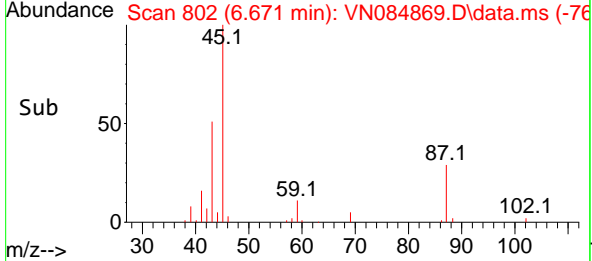
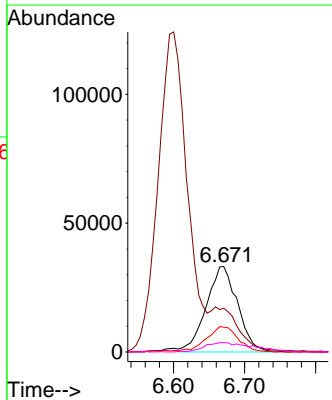
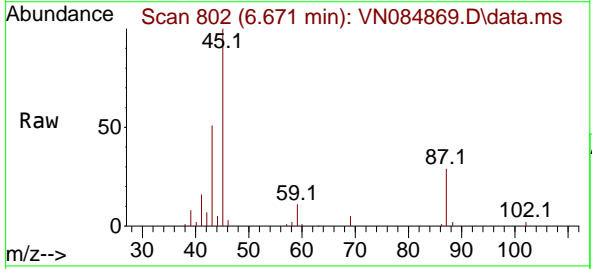
Instrument : MSVOA_N
 ClientSampleId : VN1115WBSD01

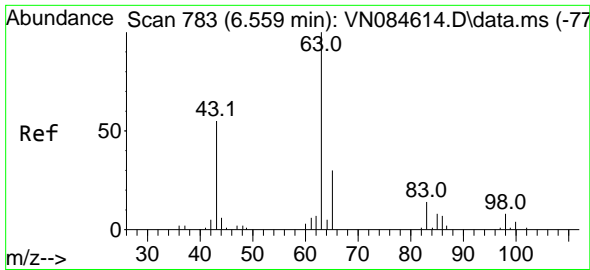
Tgt Ion	Resp	Lower	Upper
96	31643		
96	100		
61	124.9	98.1	147.1
98	66.4	46.6	69.8



#20
 Diisopropyl ether
 Concen: 18.391 ug/l
 RT: 6.671 min Scan# 802
 Delta R.T. -0.000 min
 Lab File: VN084869.D
 Acq: 15 Nov 2024 14:59

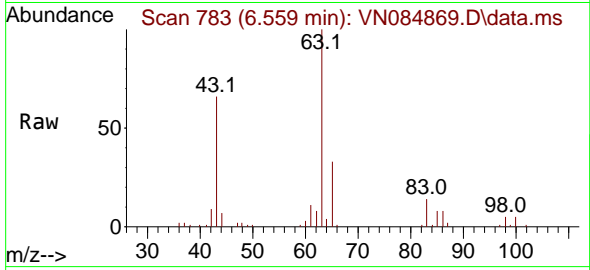
Tgt Ion	Resp	Lower	Upper
45	101553		
45	100		
43	49.5	42.6	64.0
87	29.2	23.0	34.4
59	10.4	9.4	14.0





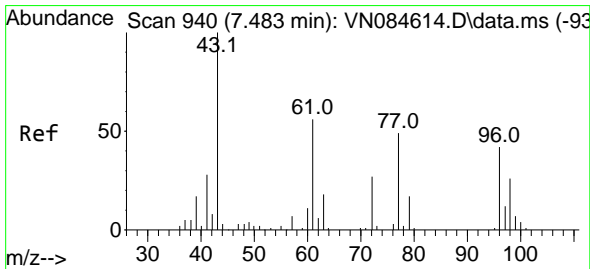
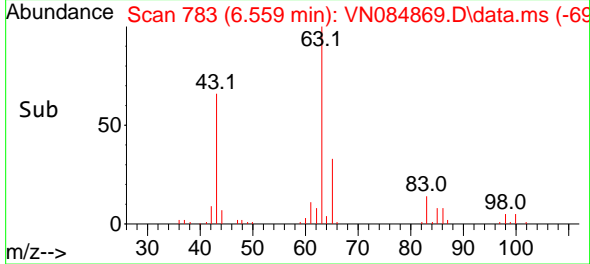
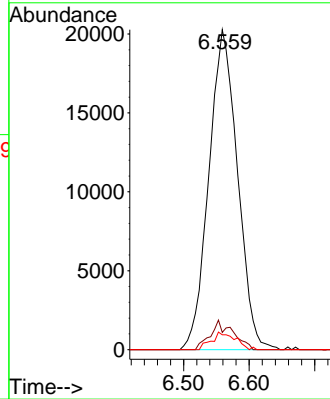
#21
 1,1-Dichloroethane
 Concen: 18.559 ug/l
 RT: 6.559 min Scan# 783
 Delta R.T. -0.000 min
 Lab File: VN084869.D
 Acq: 15 Nov 2024 14:59

Instrument :
 MSVOA_N
 ClientSampleId :
 VN1115WBSD01



Tgt Ion: 63 Resp: 61629

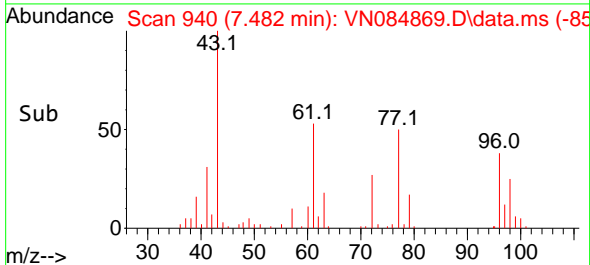
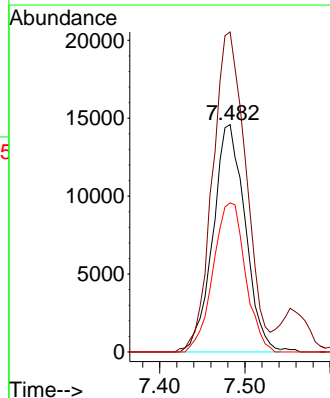
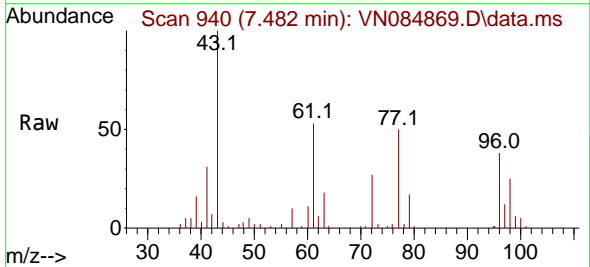
Ion	Ratio	Lower	Upper
63	100		
98	5.4	3.8	11.4
100	4.7	1.9	5.7

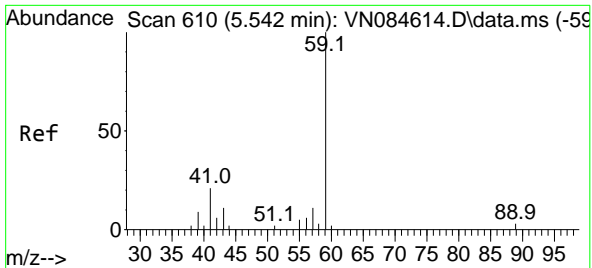


#22
 cis-1,2-Dichloroethene
 Concen: 18.888 ug/l
 RT: 7.482 min Scan# 940
 Delta R.T. -0.000 min
 Lab File: VN084869.D
 Acq: 15 Nov 2024 14:59

Tgt Ion: 96 Resp: 38262

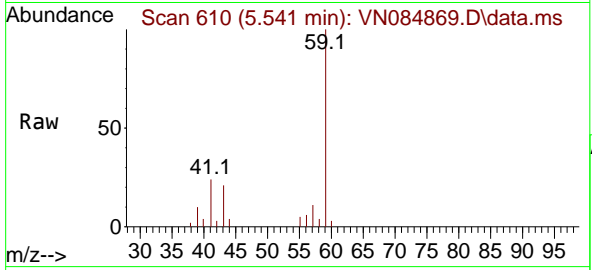
Ion	Ratio	Lower	Upper
96	100		
61	145.8	121.8	182.8
98	65.9	53.2	79.8



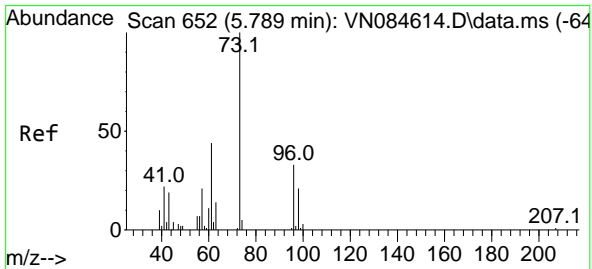
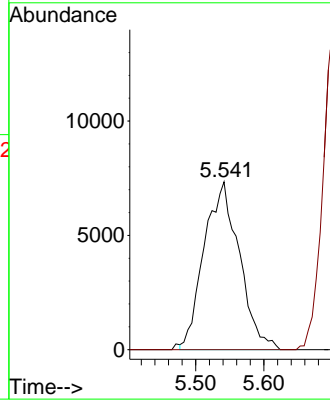
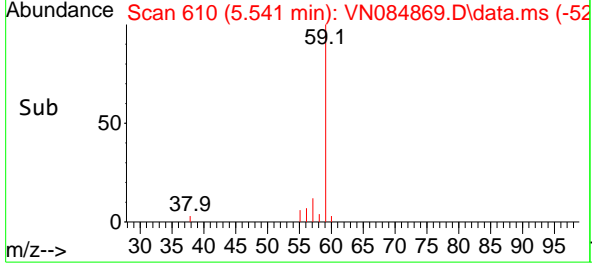


#23
 tert-Butyl Alcohol
 Concen: 91.712 ug/l
 RT: 5.541 min Scan# 610
 Delta R.T. -0.000 min
 Lab File: VN084869.D
 Acq: 15 Nov 2024 14:59

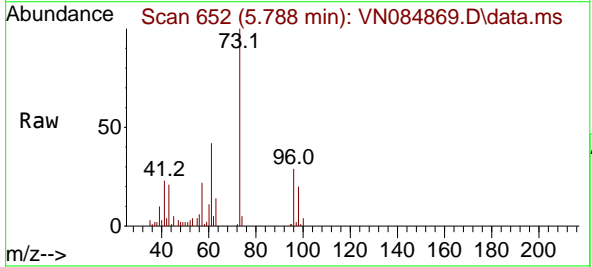
Instrument : MSVOA_N
 ClientSampleId : VN1115WBSD01



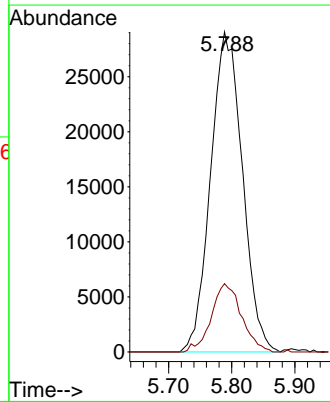
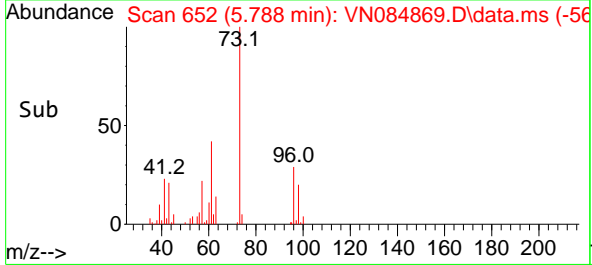
Tgt Ion: 59 Resp: 26430
 Ion Ratio Lower Upper
 59 100
 52 0.0 0.0 0.0

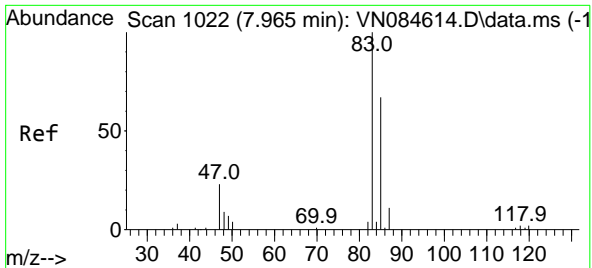


#24
 Methyl tert-Butyl Ether
 Concen: 19.428 ug/l
 RT: 5.788 min Scan# 652
 Delta R.T. -0.000 min
 Lab File: VN084869.D
 Acq: 15 Nov 2024 14:59



Tgt Ion: 73 Resp: 101702
 Ion Ratio Lower Upper
 73 100
 43 19.7 16.5 24.7

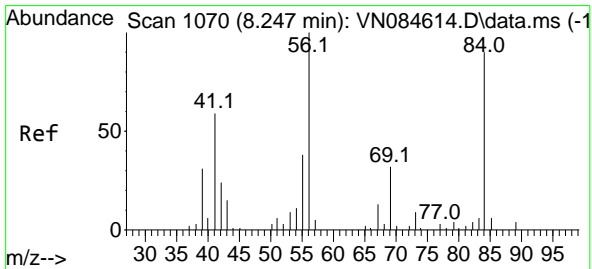
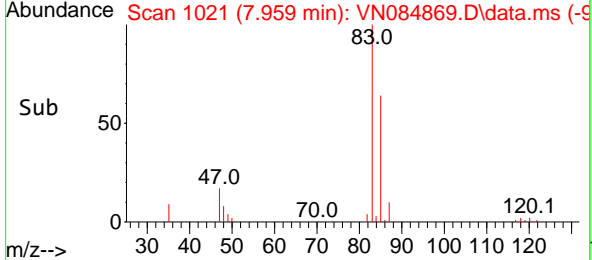
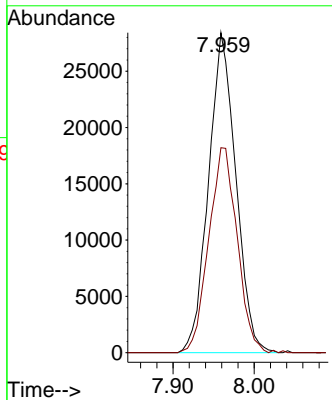
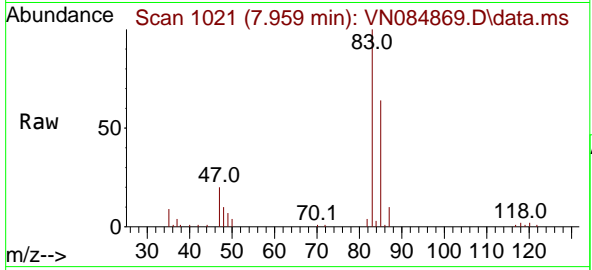




#25
 Chloroform
 Concen: 19.527 ug/l
 RT: 7.959 min Scan# 1021
 Delta R.T. -0.006 min
 Lab File: VN084869.D
 Acq: 15 Nov 2024 14:59

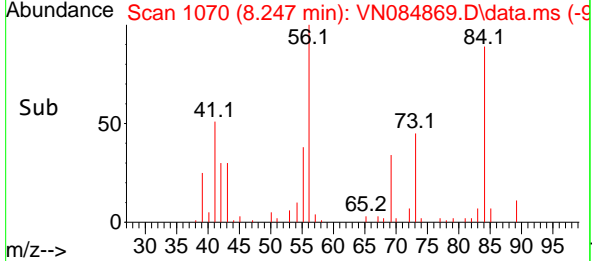
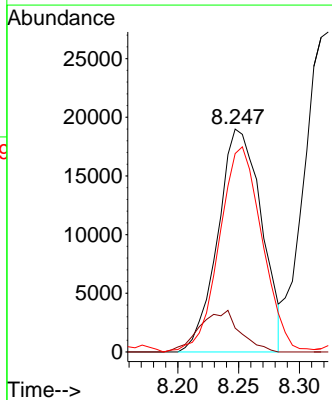
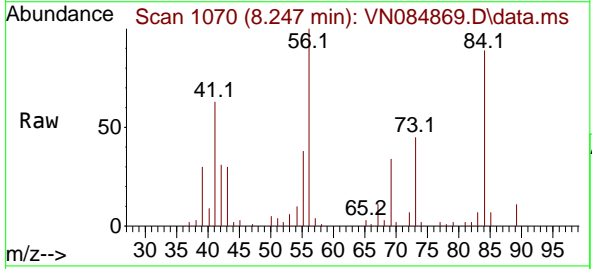
Instrument : MSVOA_N
 ClientSampleId : VN1115WBSD01

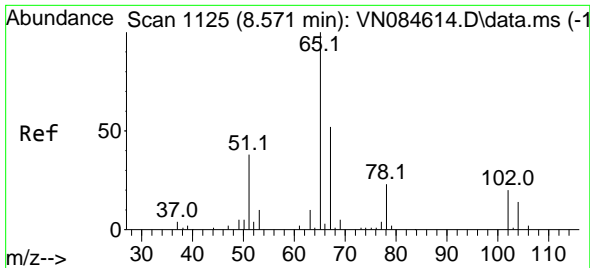
Tgt Ion	Resp	Lower	Upper
83	100		
85	64.1	53.4	80.2



#26
 Cyclohexane
 Concen: 18.668 ug/l
 RT: 8.247 min Scan# 1070
 Delta R.T. -0.000 min
 Lab File: VN084869.D
 Acq: 15 Nov 2024 14:59

Tgt Ion	Resp	Lower	Upper
56	100		
89	17.2	3.0	4.4#
84	90.4	70.6	106.0

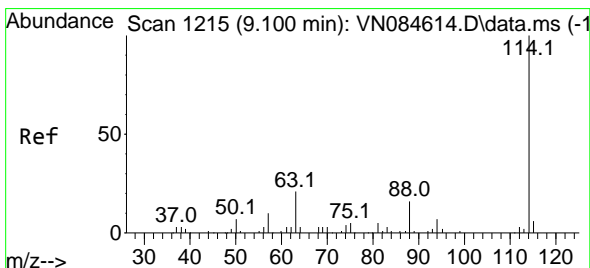
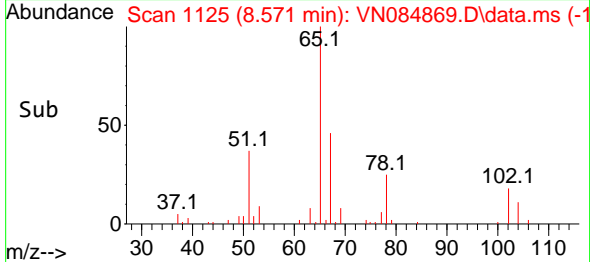
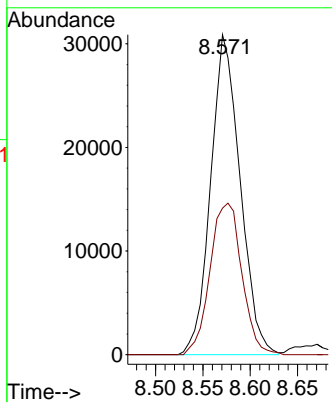
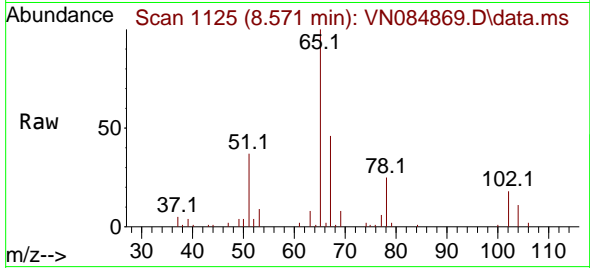




#27
 1,2-Dichloroethane-d4
 Concen: 29.890 ug/l
 RT: 8.571 min Scan# 1125
 Delta R.T. -0.000 min
 Lab File: VN084869.D
 Acq: 15 Nov 2024 14:59

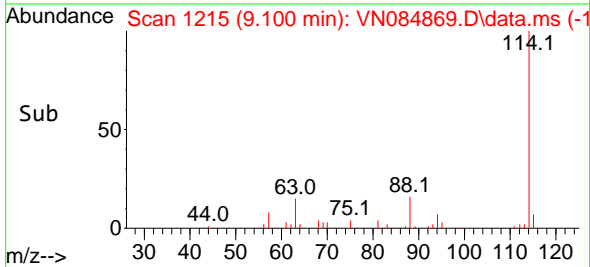
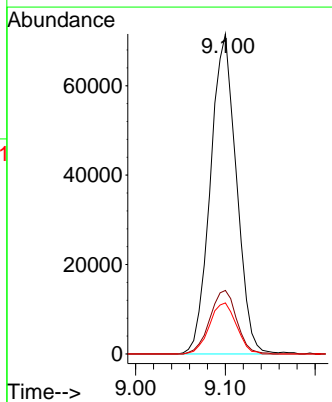
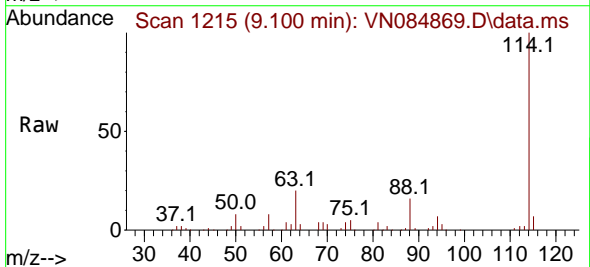
Instrument : MSVOA_N
 ClientSampleId : VN1115WBSD01

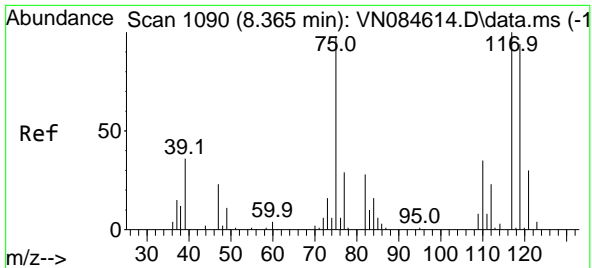
Tgt Ion: 65 Resp: 66747
 Ion Ratio Lower Upper
 65 100
 67 51.1 40.7 61.1



#28
 1,4-Difluorobenzene
 Concen: 30.000 ug/l
 RT: 9.100 min Scan# 1215
 Delta R.T. -0.000 min
 Lab File: VN084869.D
 Acq: 15 Nov 2024 14:59

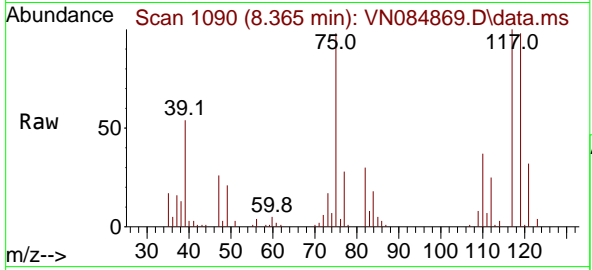
Tgt Ion: 114 Resp: 143562
 Ion Ratio Lower Upper
 114 100
 63 20.6 16.8 25.2
 88 16.6 12.9 19.3





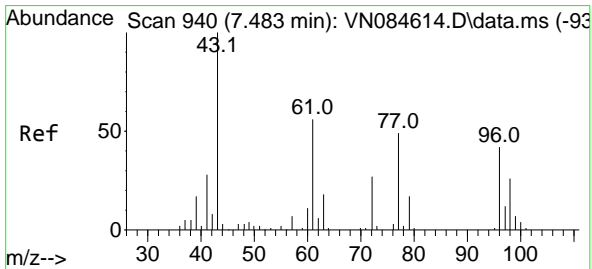
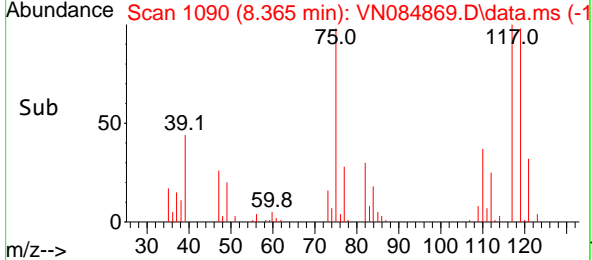
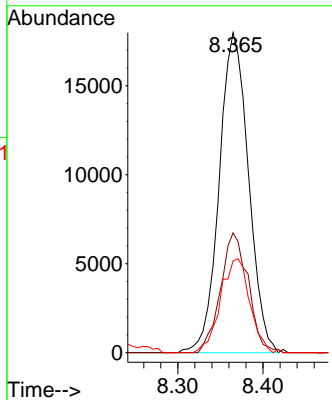
#29
 1,1-Dichloropropene
 Concen: 19.848 ug/l
 RT: 8.365 min Scan# 1090
 Delta R.T. -0.000 min
 Lab File: VN084869.D
 Acq: 15 Nov 2024 14:59

Instrument : MSVOA_N
 ClientSampleId : VN1115WBSD01

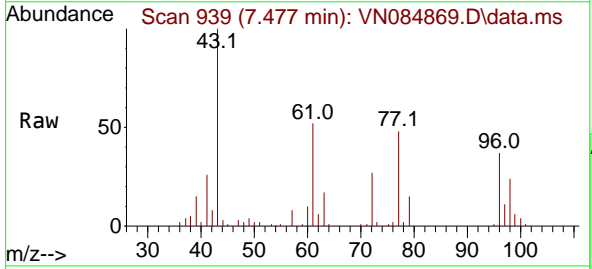


Tgt Ion: 75 Resp: 42918

Ion	Ratio	Lower	Upper
75	100		
110	35.4	0.0	69.4
77	29.3	0.0	62.0

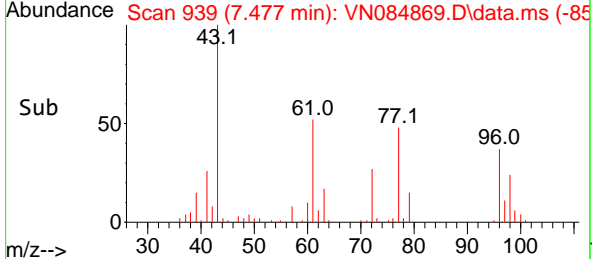
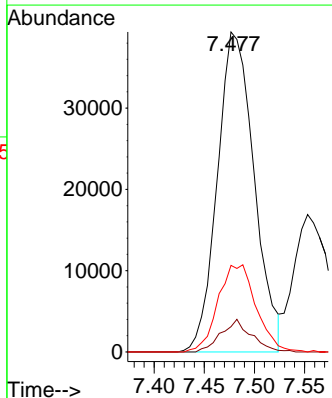


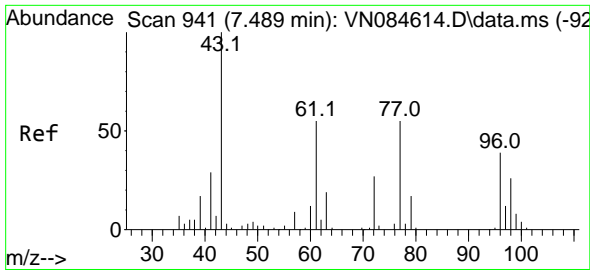
#30
 2-Butanone
 Concen: 100.812 ug/l
 RT: 7.477 min Scan# 939
 Delta R.T. -0.006 min
 Lab File: VN084869.D
 Acq: 15 Nov 2024 14:59



Tgt Ion: 43 Resp: 100555

Ion	Ratio	Lower	Upper
43	100		
57	8.3	6.2	9.4
72	28.2	21.5	32.3

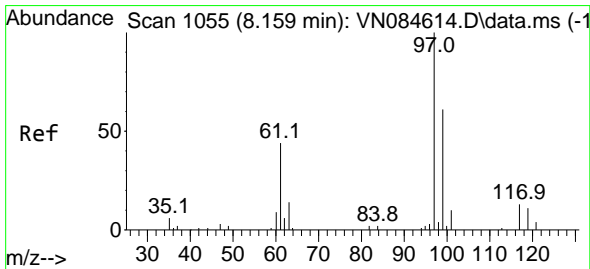
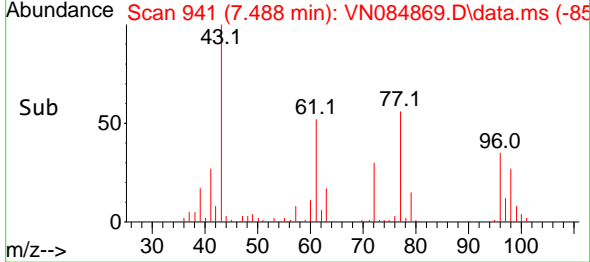
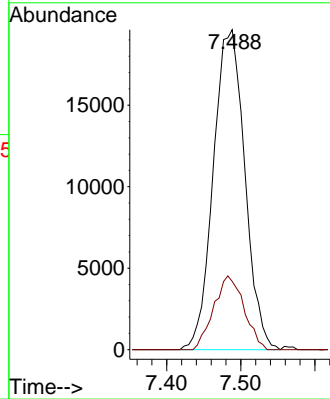
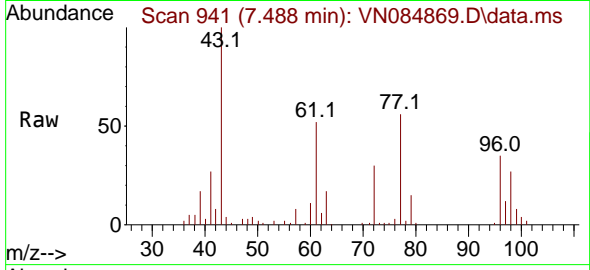




#31
 2,2-Dichloropropane
 Concen: 21.952 ug/l
 RT: 7.488 min Scan# 941
 Delta R.T. -0.000 min
 Lab File: VN084869.D
 Acq: 15 Nov 2024 14:59

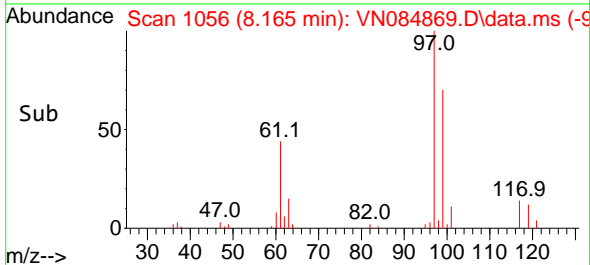
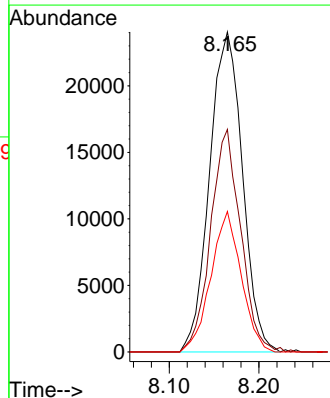
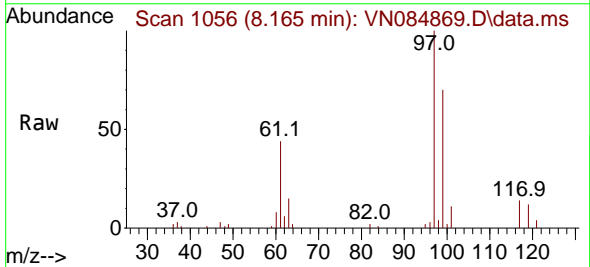
Instrument : MSVOA_N
 ClientSampleId : VN1115WBSD01

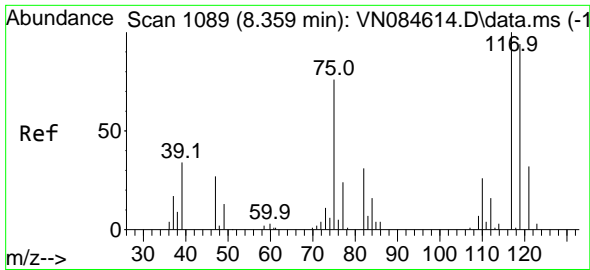
Tgt Ion: 77 Resp: 57944
 Ion Ratio Lower Upper
 77 100
 97 22.1 17.4 26.2



#32
 1,1,1-Trichloroethane
 Concen: 20.826 ug/l
 RT: 8.165 min Scan# 1056
 Delta R.T. 0.006 min
 Lab File: VN084869.D
 Acq: 15 Nov 2024 14:59

Tgt Ion: 97 Resp: 61181
 Ion Ratio Lower Upper
 97 100
 99 63.6 51.6 77.4
 61 40.6 34.2 51.4



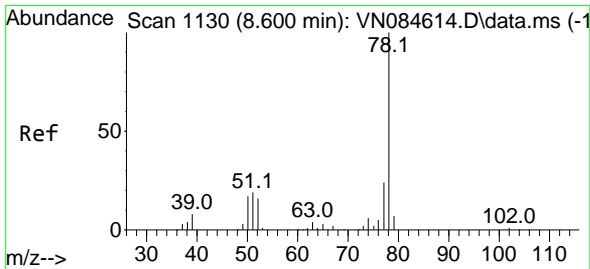
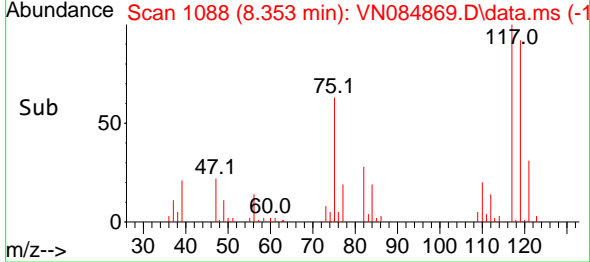
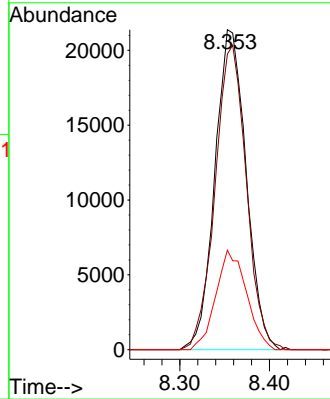
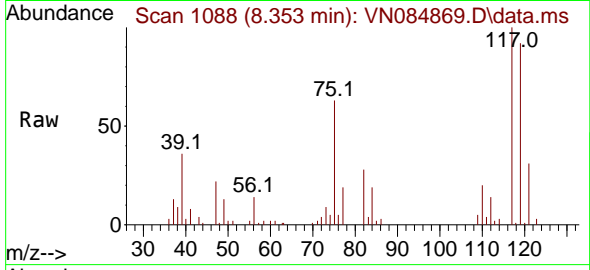


#33
 Carbon Tetrachloride
 Concen: 20.603 ug/l
 RT: 8.353 min Scan# 1088
 Delta R.T. -0.006 min
 Lab File: VN084869.D
 Acq: 15 Nov 2024 14:59

Instrument : MSVOA_N
 ClientSampleId : VN1115WBSD01

Tgt Ion:117 Resp: 51647

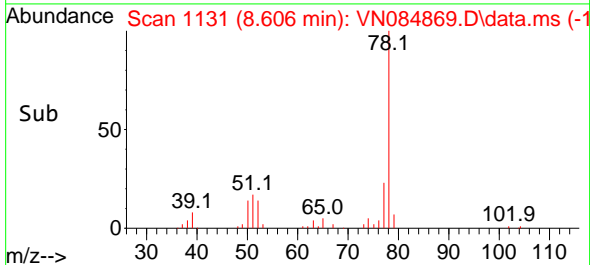
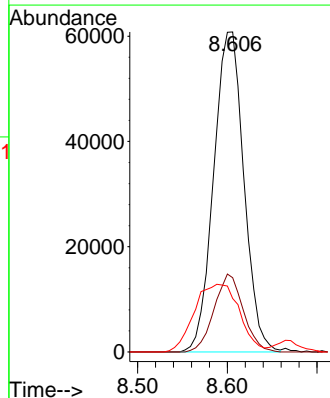
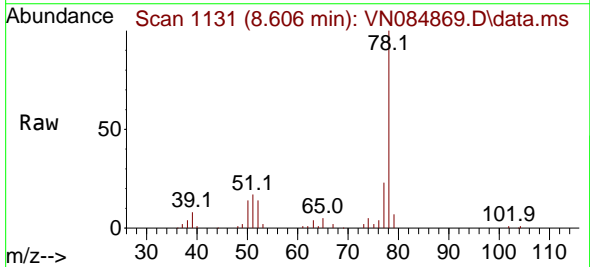
Ion	Ratio	Lower	Upper
117	100		
119	92.4	75.7	113.5
121	31.1	25.4	38.0

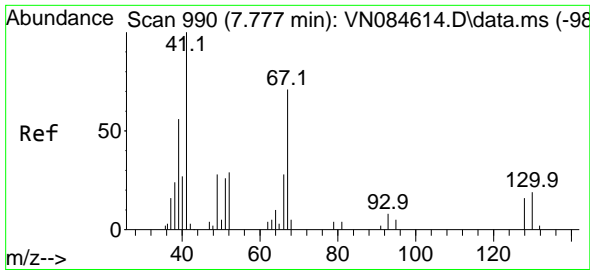


#34
 Benzene
 Concen: 19.890 ug/l
 RT: 8.606 min Scan# 1131
 Delta R.T. 0.006 min
 Lab File: VN084869.D
 Acq: 15 Nov 2024 14:59

Tgt Ion: 78 Resp: 142162

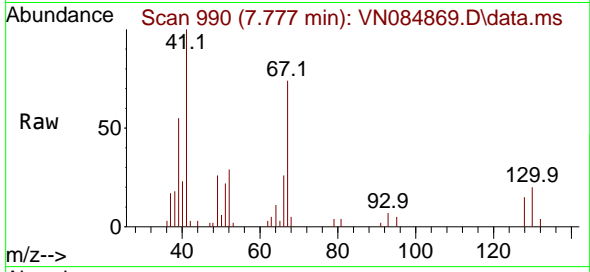
Ion	Ratio	Lower	Upper
78	100		
77	23.2	19.3	28.9
51	13.9	16.1	24.1





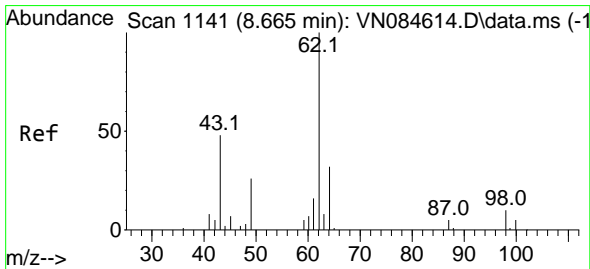
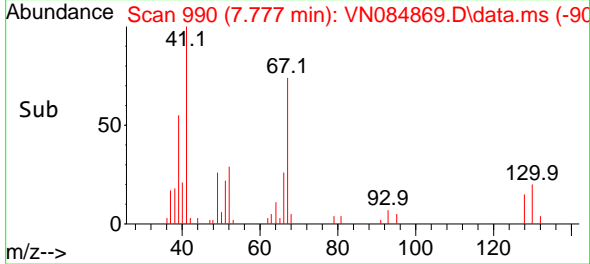
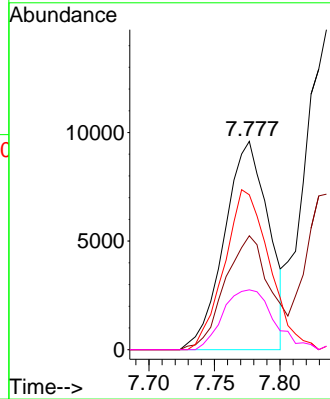
#35
 Methacrylonitrile
 Concen: 19.050 ug/l
 RT: 7.777 min Scan# 990
 Delta R.T. -0.000 min
 Lab File: VN084869.D
 Acq: 15 Nov 2024 14:59

Instrument :
 MSVOA_N
 ClientSampleId :
 VN1115WBSD01



Tgt Ion: 41 Resp: 22520

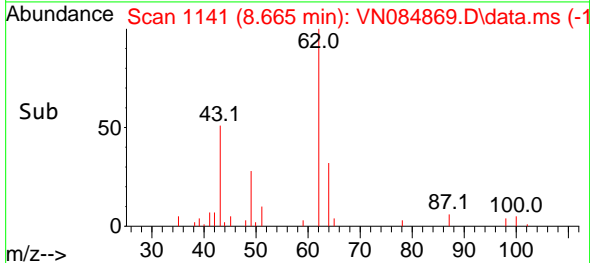
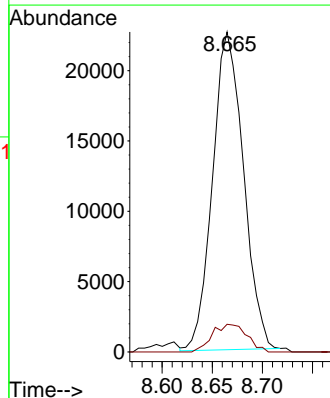
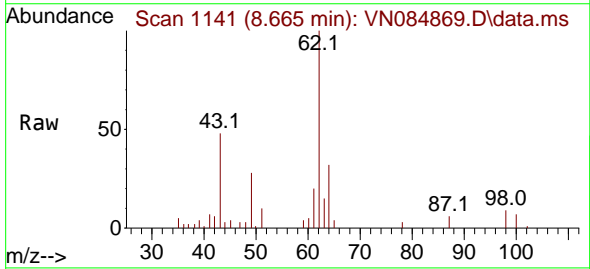
Ion	Ratio	Lower	Upper
41	100		
39	54.7	28.2	84.6
67	74.3	35.6	106.8
52	28.7	14.4	43.4

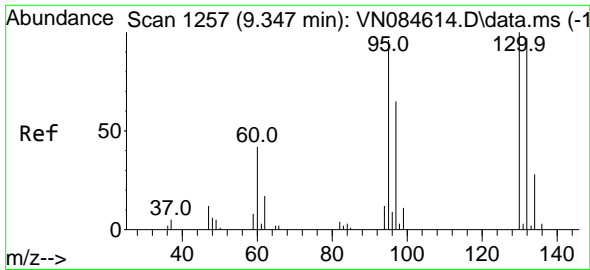


#36
 1,2-Dichloroethane
 Concen: 20.334 ug/l
 RT: 8.665 min Scan# 1141
 Delta R.T. -0.000 min
 Lab File: VN084869.D
 Acq: 15 Nov 2024 14:59

Tgt Ion: 62 Resp: 48331

Ion	Ratio	Lower	Upper
62	100		
98	9.8	7.8	11.6

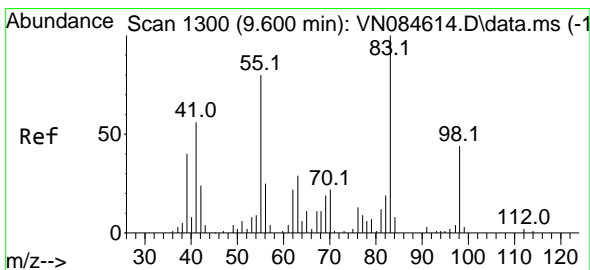
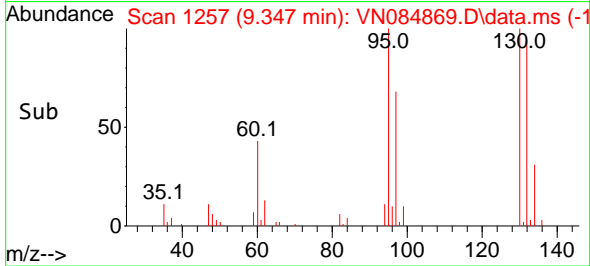
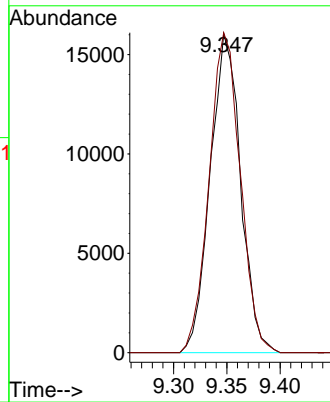
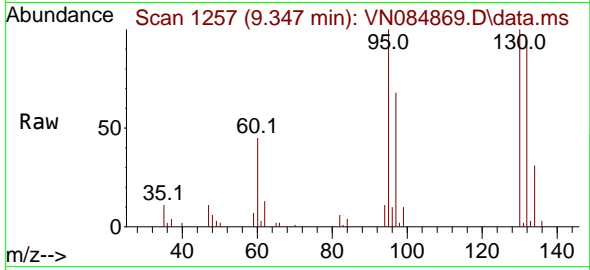




#37
 Trichloroethene
 Concen: 19.735 ug/l
 RT: 9.347 min Scan# 1257
 Delta R.T. -0.000 min
 Lab File: VN084869.D
 Acq: 15 Nov 2024 14:59

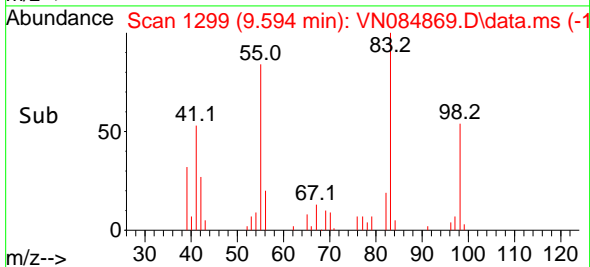
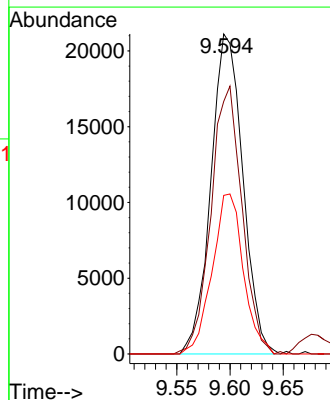
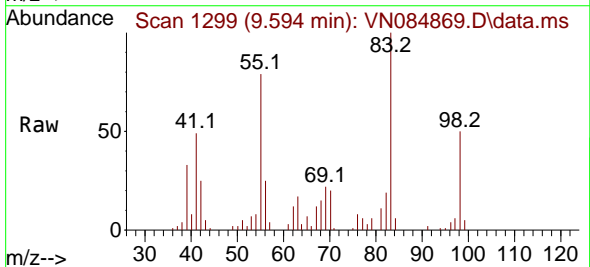
Instrument :
 MSVOA_N
 ClientSampleId :
 VN1115WBSD01

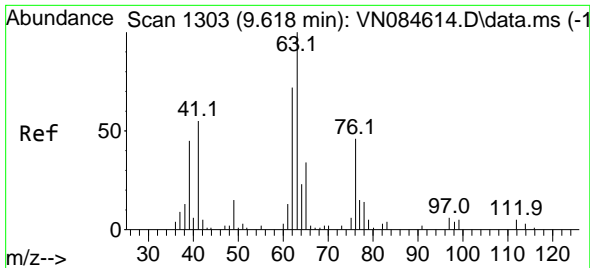
Tgt Ion:130 Resp: 31820
 Ion Ratio Lower Upper
 130 100
 95 100.4 76.6 115.0



#38
 Methylcyclohexane
 Concen: 18.937 ug/l
 RT: 9.594 min Scan# 1299
 Delta R.T. -0.006 min
 Lab File: VN084869.D
 Acq: 15 Nov 2024 14:59

Tgt Ion: 83 Resp: 44082
 Ion Ratio Lower Upper
 83 100
 55 81.0 39.6 118.8
 98 48.9 23.2 69.5

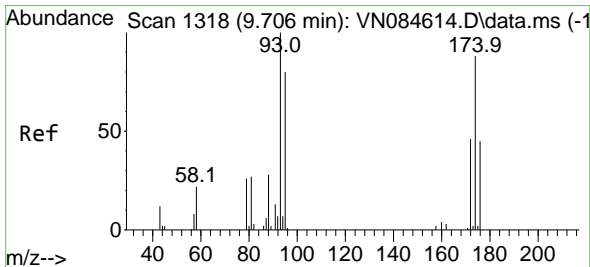
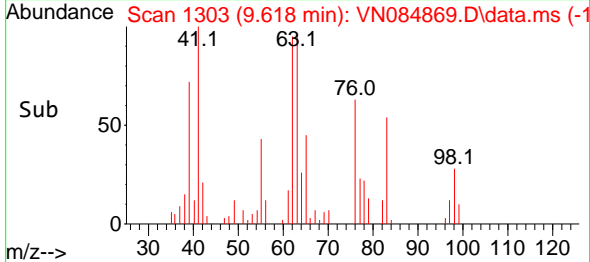
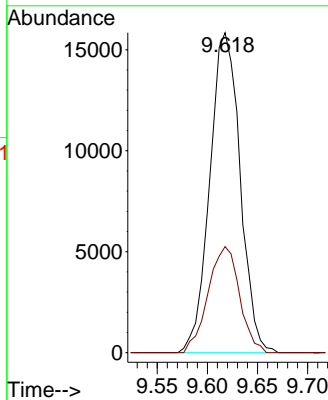
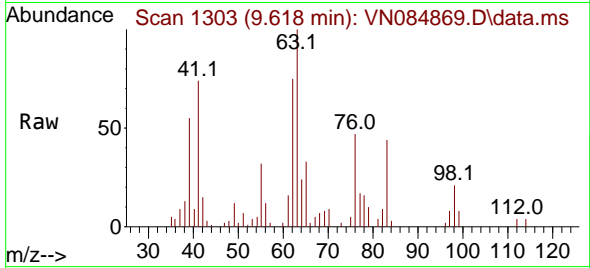




#39
 1,2-Dichloropropane
 Concen: 19.342 ug/l
 RT: 9.618 min Scan# 111
 Delta R.T. -0.000 min
 Lab File: VN084869.D
 Acq: 15 Nov 2024 14:59

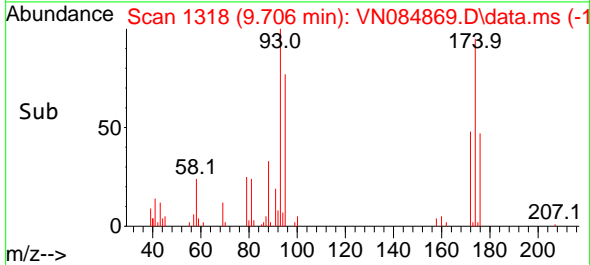
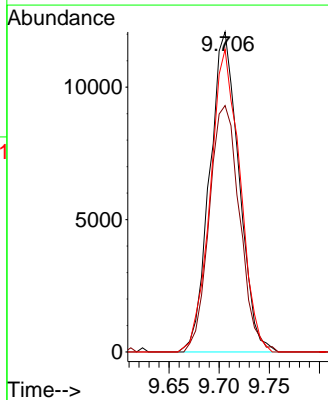
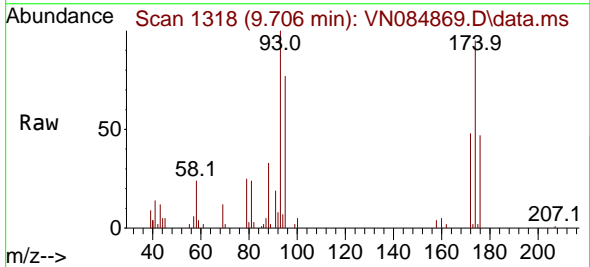
Instrument : MSVOA_N
 ClientSampleId : VN1115WBSD01

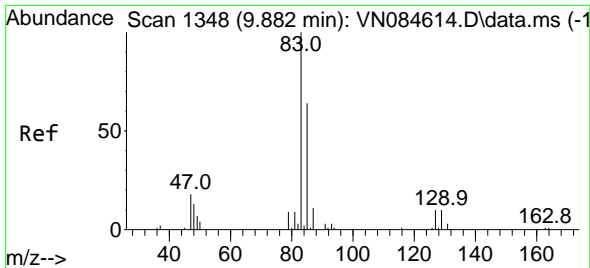
Tgt Ion	Resp	Ion Ratio	Lower	Upper
63	33278	100		
65		33.1	27.8	41.8



#40
 Dibromomethane
 Concen: 20.454 ug/l
 RT: 9.706 min Scan# 1318
 Delta R.T. -0.000 min
 Lab File: VN084869.D
 Acq: 15 Nov 2024 14:59

Tgt Ion	Resp	Ion Ratio	Lower	Upper
93	24619	100		
95		79.8	0.0	168.4
174		95.5	0.0	183.4

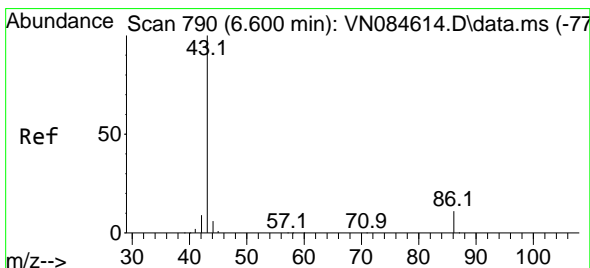
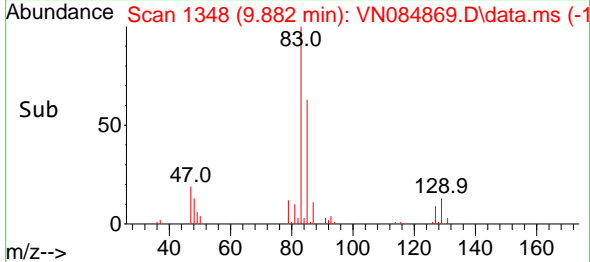
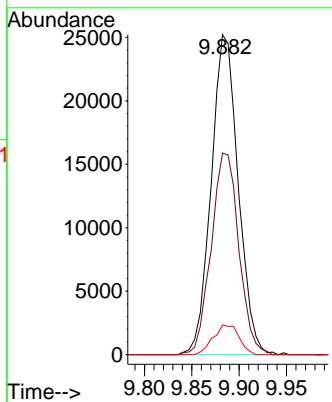
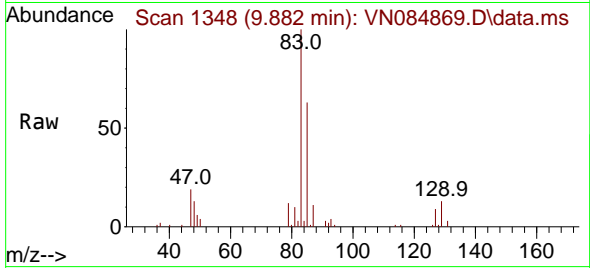




#41
 Bromodichloromethane
 Concen: 19.407 ug/l
 RT: 9.882 min Scan# 11
 Delta R.T. -0.000 min
 Lab File: VN084869.D
 Acq: 15 Nov 2024 14:59

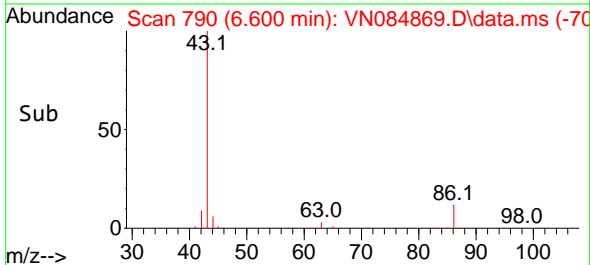
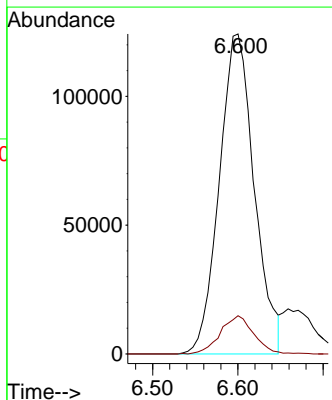
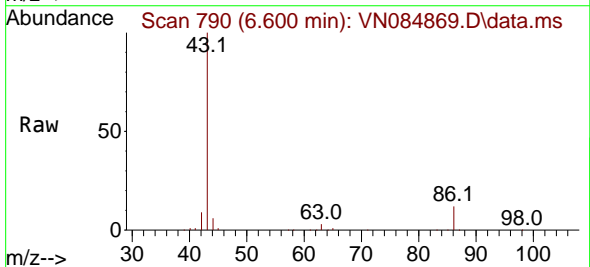
Instrument : MSVOA_N
 ClientSampleId : VN1115WBSD01

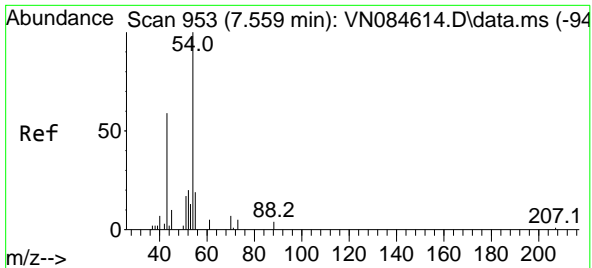
Tgt Ion	Resp	Lower	Upper
83	50075	100	
85	63.0	51.0	76.6
127	9.2	7.8	11.6



#42
 Vinyl Acetate
 Concen: 95.113 ug/l
 RT: 6.600 min Scan# 790
 Delta R.T. -0.000 min
 Lab File: VN084869.D
 Acq: 15 Nov 2024 14:59

Tgt Ion	Resp	Lower	Upper
43	354614	100	
86	11.3	8.6	13.0

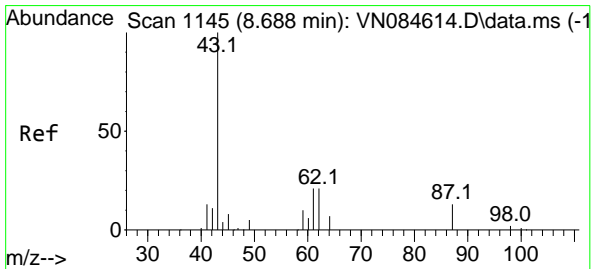
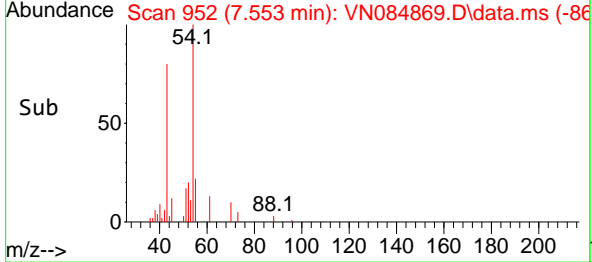
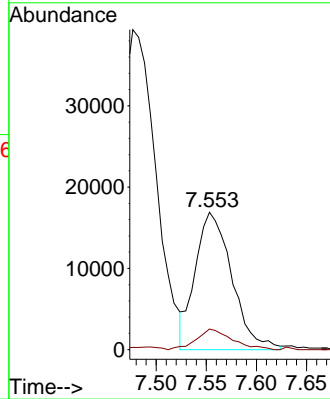
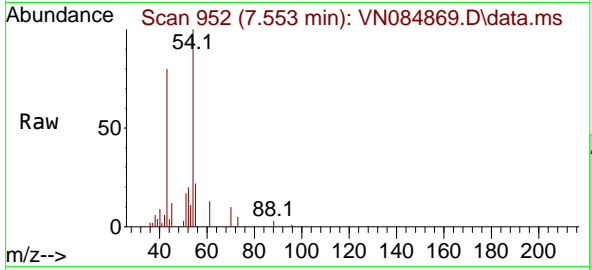




#43
 Ethyl Acetate
 Concen: 20.477 ug/l
 RT: 7.553 min Scan# 911
 Delta R.T. -0.006 min
 Lab File: VN084869.D
 Acq: 15 Nov 2024 14:59

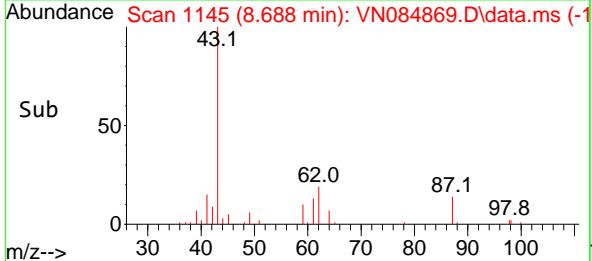
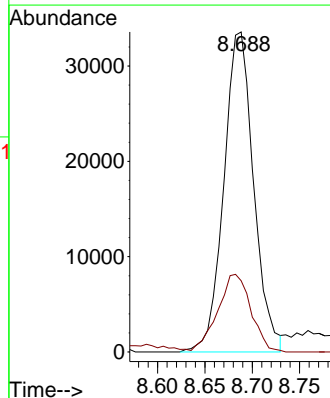
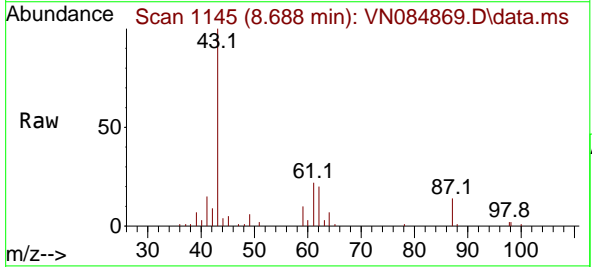
Instrument : MSVOA_N
 ClientSampleId : VN1115WBSD01

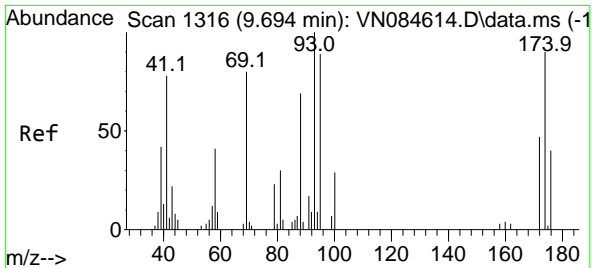
Tgt Ion: 43 Resp: 42917
 Ion Ratio Lower Upper
 43 100
 45 14.6 11.0 16.4



#44
 Isopropyl Acetate
 Concen: 17.348 ug/l
 RT: 8.688 min Scan# 1145
 Delta R.T. -0.000 min
 Lab File: VN084869.D
 Acq: 15 Nov 2024 14:59

Tgt Ion: 43 Resp: 73627
 Ion Ratio Lower Upper
 43 100
 61 27.0 19.8 29.8



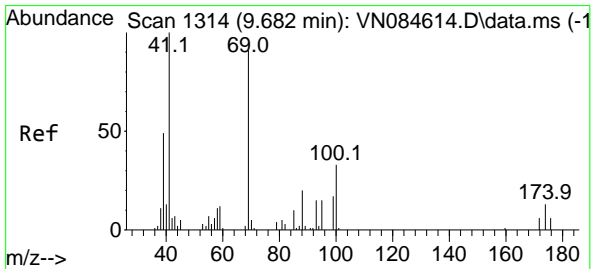
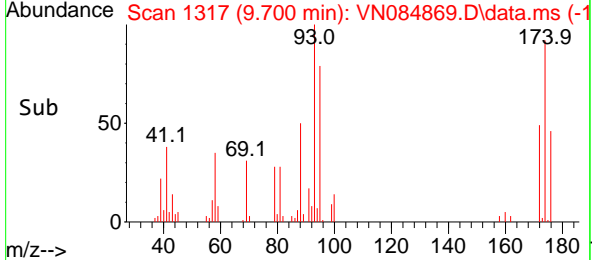
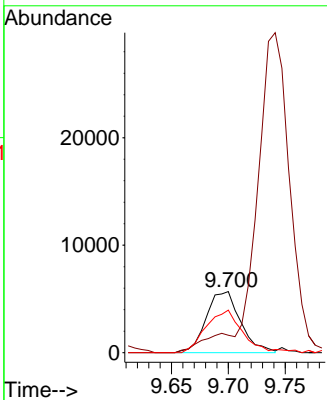
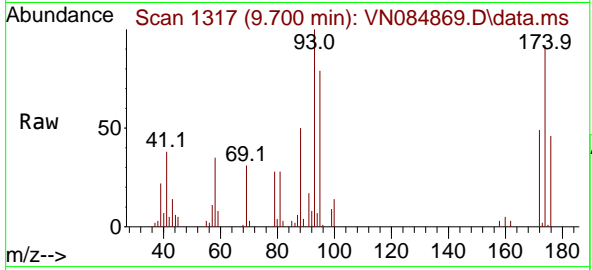


#45
 1,4-Dioxane
 Concen: 421.654 ug/l
 RT: 9.700 min Scan# 1317
 Delta R.T. 0.006 min
 Lab File: VN084869.D
 Acq: 15 Nov 2024 14:59

Instrument : MSVOA_N
 ClientSampleId : VN1115WBSD01

Tgt Ion: 88 Resp: 11947

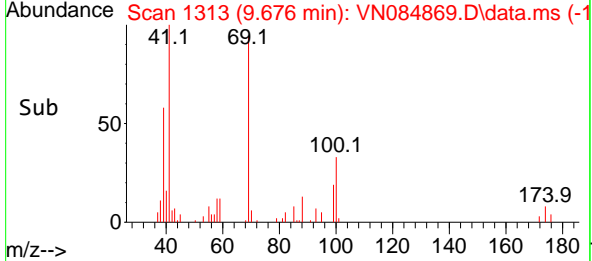
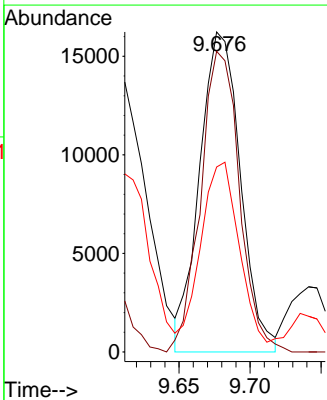
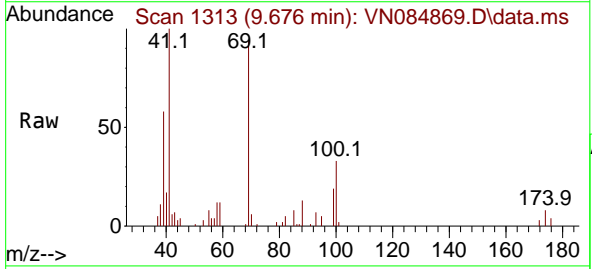
Ion	Ratio	Lower	Upper
88	100		
43	30.6	20.8	31.2
58	71.9	53.4	80.2

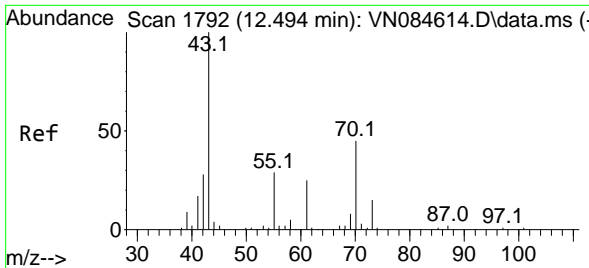


#46
 Methyl methacrylate
 Concen: 19.010 ug/l
 RT: 9.676 min Scan# 1313
 Delta R.T. -0.006 min
 Lab File: VN084869.D
 Acq: 15 Nov 2024 14:59

Tgt Ion: 41 Resp: 32421

Ion	Ratio	Lower	Upper
41	100		
69	95.8	43.4	130.2
39	56.2	24.7	74.1

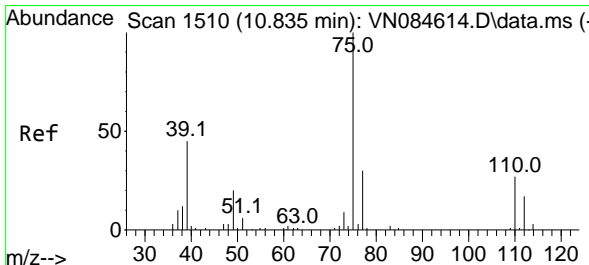
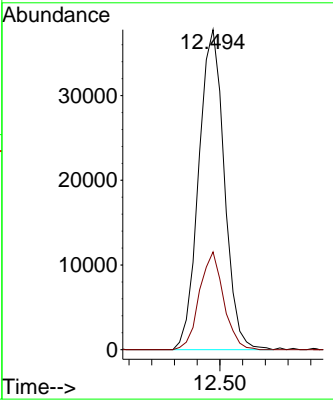
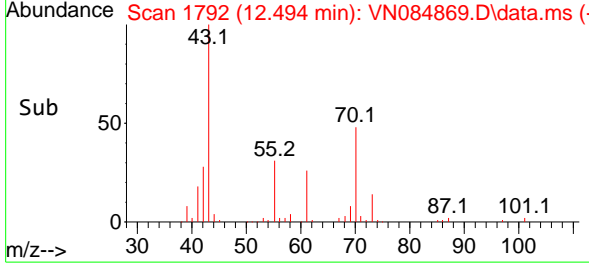
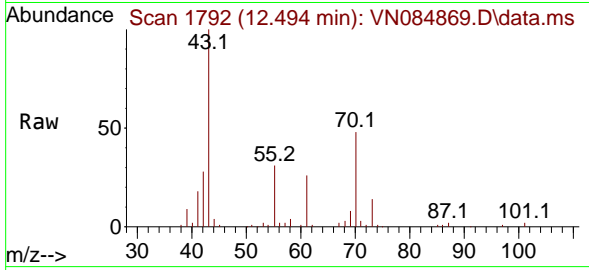




#47
 n-amy1 Acetate
 Concen: 18.657 ug/l
 RT: 12.494 min Scan# 11
 Delta R.T. -0.000 min
 Lab File: VN084869.D
 Acq: 15 Nov 2024 14:59

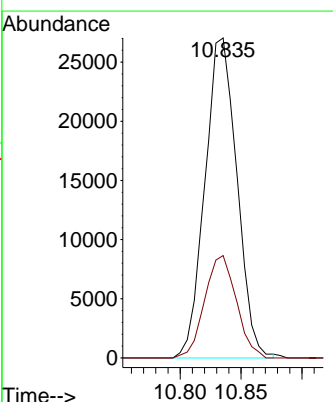
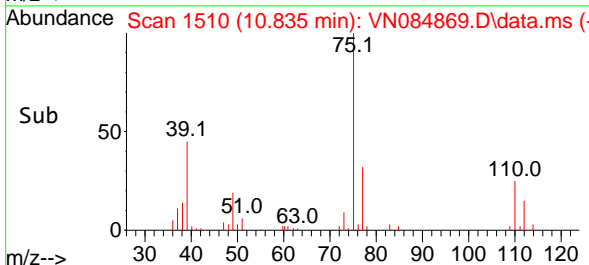
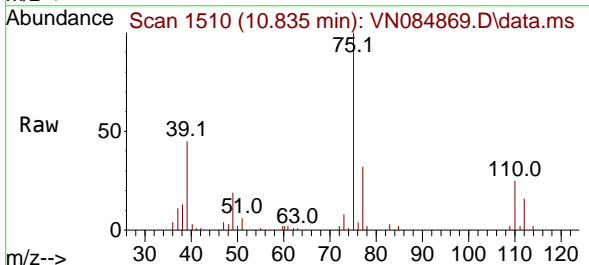
Instrument : MSVOA_N
 ClientSampleId : VN1115WBSD01

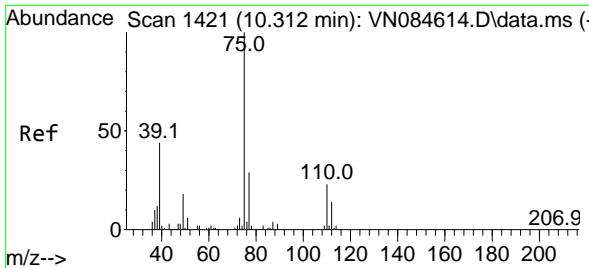
Tgt Ion: 43 Resp: 59136
 Ion Ratio Lower Upper
 43 100
 55 28.8 22.0 33.0



#48
 t-1,3-Dichloropropene
 Concen: 19.380 ug/l
 RT: 10.835 min Scan# 1510
 Delta R.T. -0.000 min
 Lab File: VN084869.D
 Acq: 15 Nov 2024 14:59

Tgt Ion: 75 Resp: 49378
 Ion Ratio Lower Upper
 75 100
 77 32.0 24.4 36.6



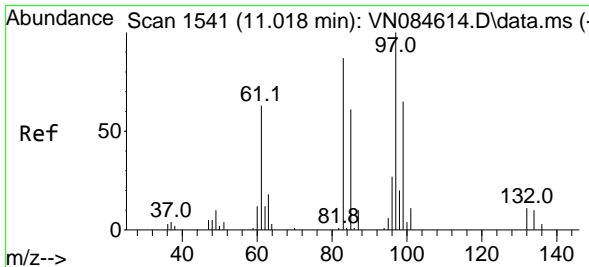
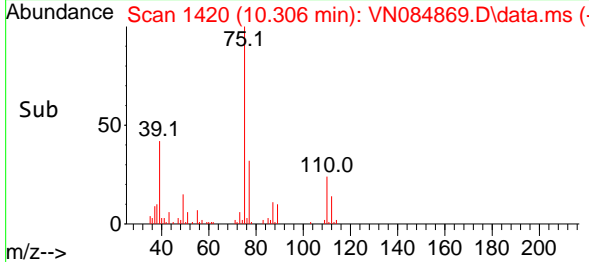
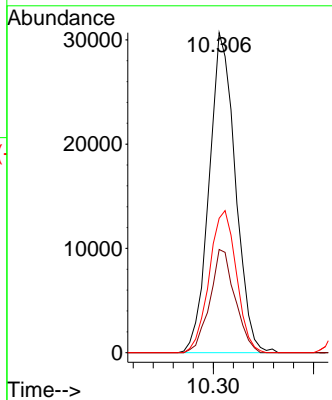
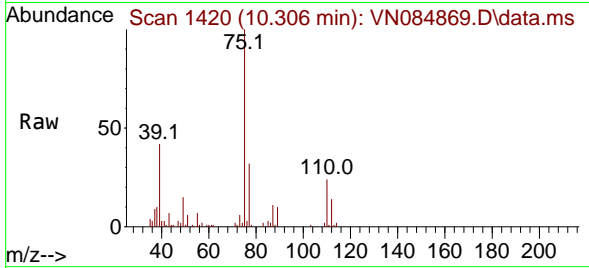


#49
 cis-1,3-Dichloropropene
 Concen: 20.401 ug/l
 RT: 10.306 min Scan# 1420
 Delta R.T. -0.006 min
 Lab File: VN084869.D
 Acq: 15 Nov 2024 14:59

Instrument : MSVOA_N
 ClientSampleId : VN1115WBSD01

Tgt Ion: 75 Resp: 55708

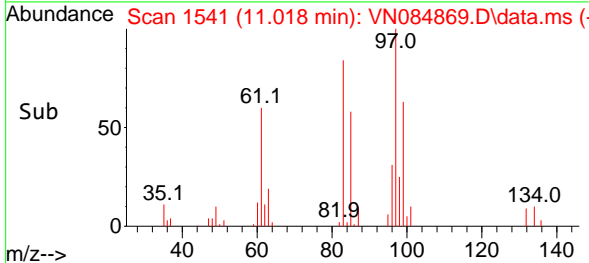
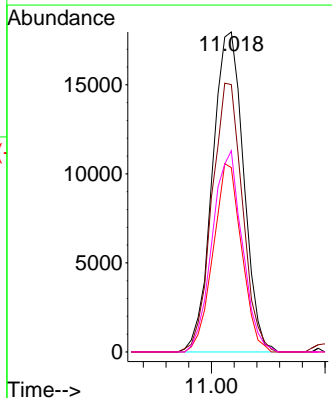
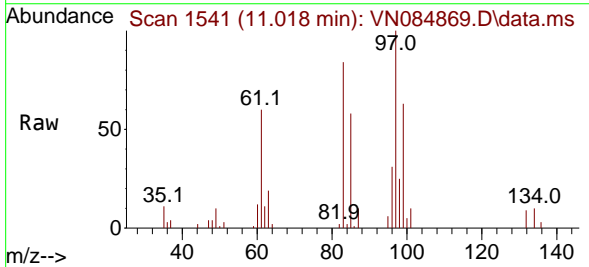
Ion	Ratio	Lower	Upper
75	100		
77	32.3	23.4	35.2
39	42.0	35.4	53.2

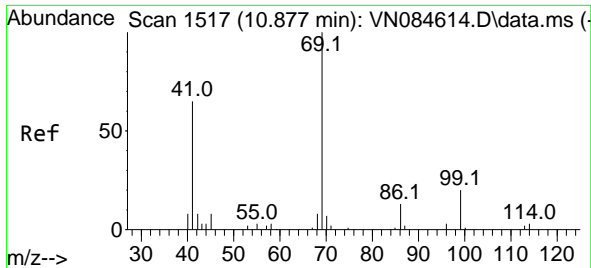


#50
 1,1,2-Trichloroethane
 Concen: 21.229 ug/l
 RT: 11.018 min Scan# 1541
 Delta R.T. -0.000 min
 Lab File: VN084869.D
 Acq: 15 Nov 2024 14:59

Tgt Ion: 97 Resp: 34274

Ion	Ratio	Lower	Upper
97	100		
83	83.5	69.8	104.8
85	57.6	48.6	73.0
99	62.9	52.9	79.3



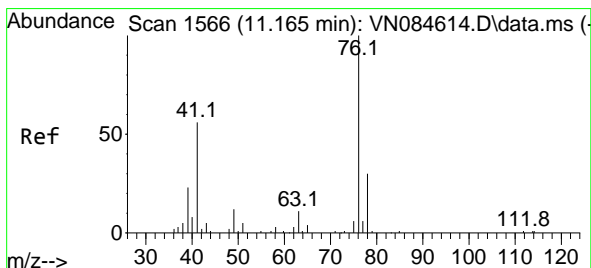
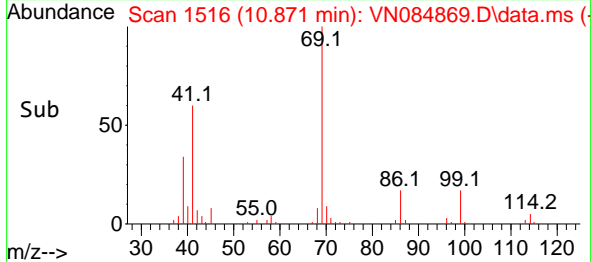
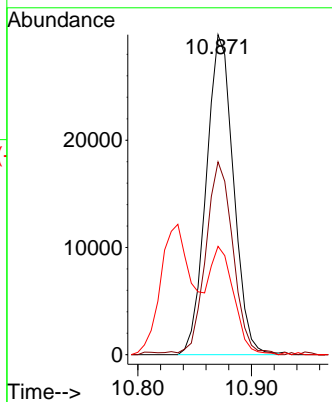
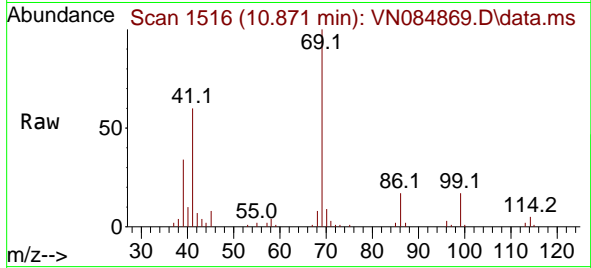


#51
 Ethyl methacrylate
 Concen: 20.023 ug/l
 RT: 10.871 min Scan# 1516
 Delta R.T. -0.006 min
 Lab File: VN084869.D
 Acq: 15 Nov 2024 14:59

Instrument : MSVOA_N
 ClientSampleId : VN1115WBSD01

Tgt Ion: 69 Resp: 49829

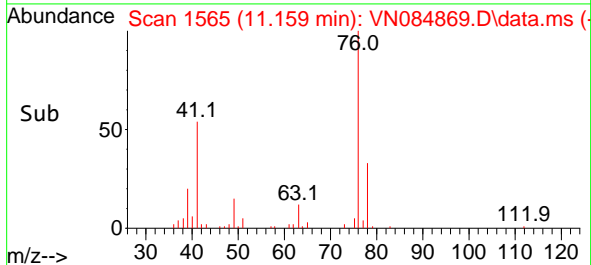
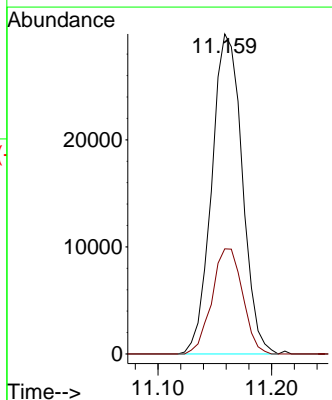
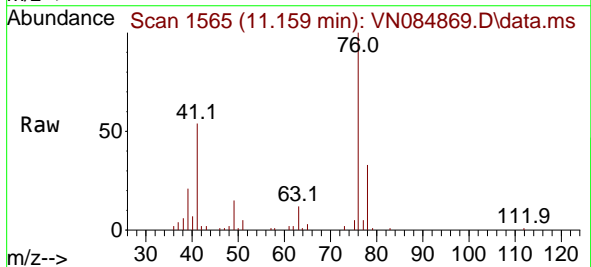
Ion	Ratio	Lower	Upper
69	100		
41	60.2	32.8	98.3
39	33.8	15.4	46.1

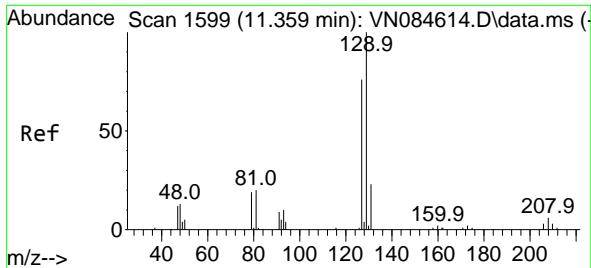


#52
 1,3-Dichloropropane
 Concen: 19.891 ug/l
 RT: 11.159 min Scan# 1565
 Delta R.T. -0.006 min
 Lab File: VN084869.D
 Acq: 15 Nov 2024 14:59

Tgt Ion: 76 Resp: 55741

Ion	Ratio	Lower	Upper
76	100		
78	33.0	0.0	64.0

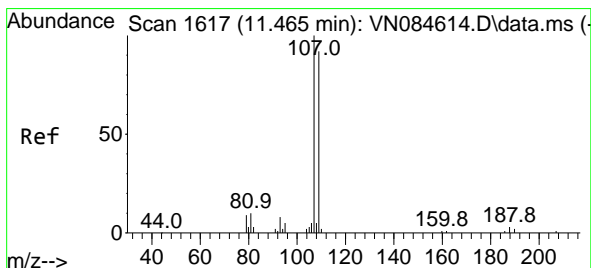
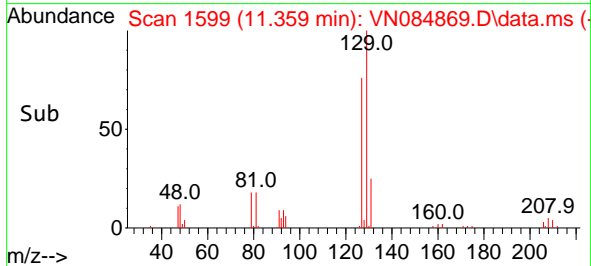
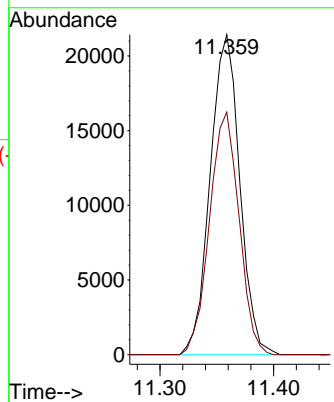
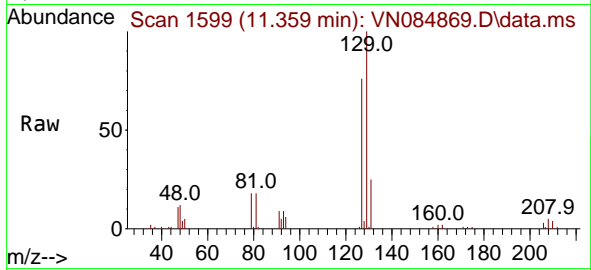




#53
 Dibromochloromethane
 Concen: 20.524 ug/l
 RT: 11.359 min Scan# 1599
 Delta R.T. -0.000 min
 Lab File: VN084869.D
 Acq: 15 Nov 2024 14:59

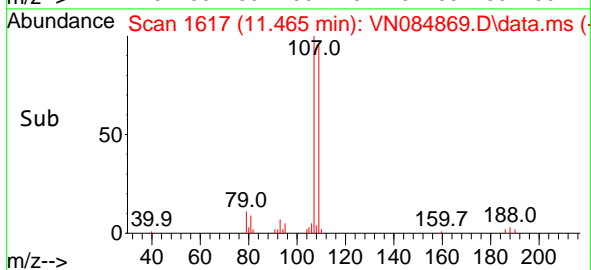
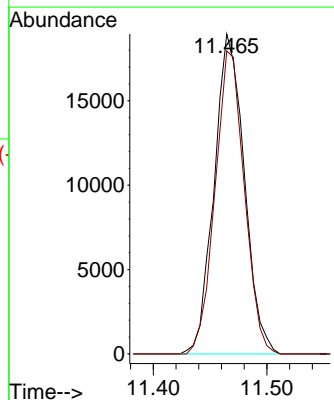
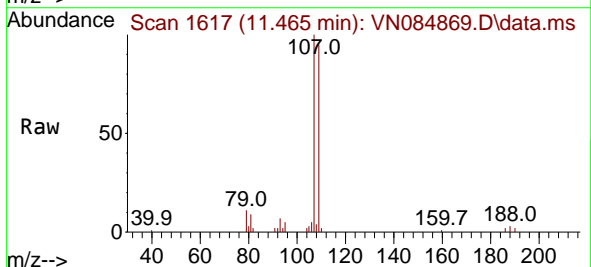
Instrument : MSVOA_N
 ClientSampleId : VN1115WBSD01

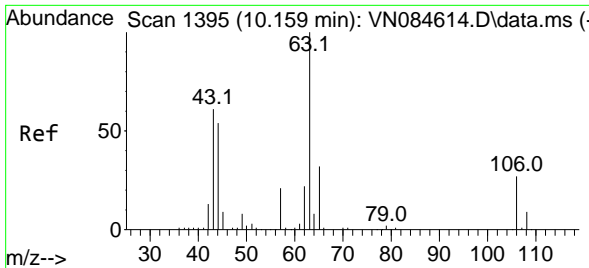
Tgt Ion:129 Resp: 38777
 Ion Ratio Lower Upper
 129 100
 127 75.6 39.6 119.0



#54
 1,2-Dibromoethane
 Concen: 21.412 ug/l
 RT: 11.465 min Scan# 1617
 Delta R.T. -0.000 min
 Lab File: VN084869.D
 Acq: 15 Nov 2024 14:59

Tgt Ion:107 Resp: 34963
 Ion Ratio Lower Upper
 107 100
 109 91.8 73.4 110.0



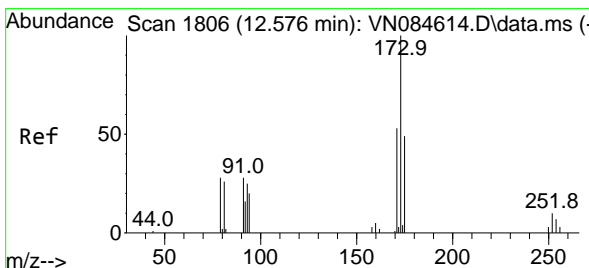
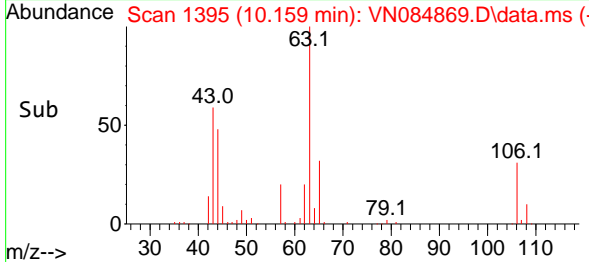
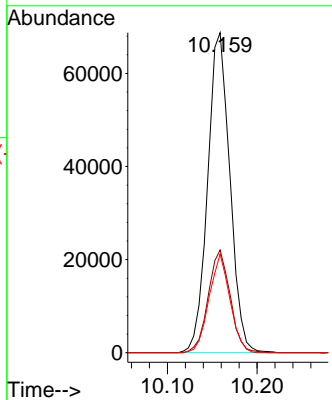
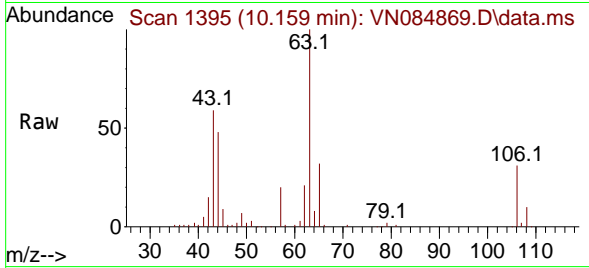


#55
 2-Chloroethyl vinyl ether
 Concen: 96.998 ug/l
 RT: 10.159 min Scan# 111
 Delta R.T. -0.000 min
 Lab File: VN084869.D
 Acq: 15 Nov 2024 14:59

Instrument : MSVOA_N
 ClientSampleId : VN1115WBSD01

Tgt Ion: 63 Resp: 118346

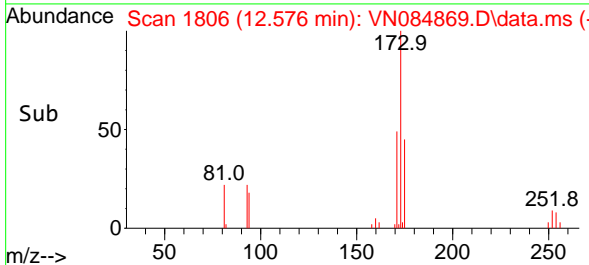
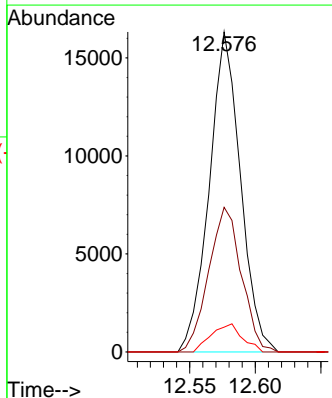
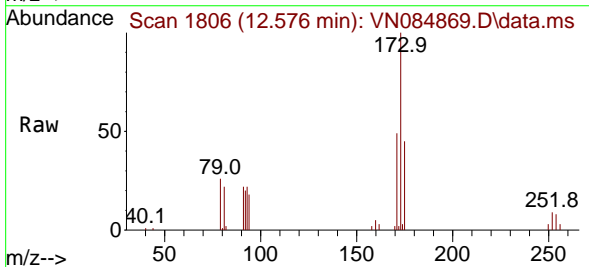
Ion	Ratio	Lower	Upper
63	100		
65	31.6	25.5	38.3
106	28.9	22.3	33.5

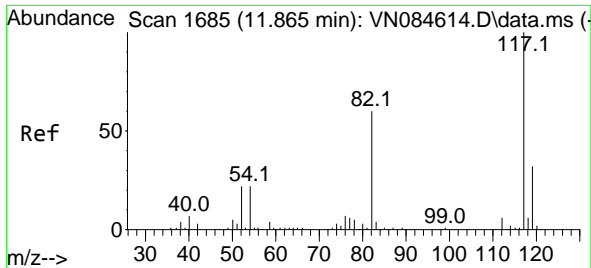


#56
 Bromoform
 Concen: 21.287 ug/l
 RT: 12.576 min Scan# 1806
 Delta R.T. -0.000 min
 Lab File: VN084869.D
 Acq: 15 Nov 2024 14:59

Tgt Ion: 173 Resp: 26958

Ion	Ratio	Lower	Upper
173	100		
175	47.4	39.4	59.2
254	8.7	6.4	9.6



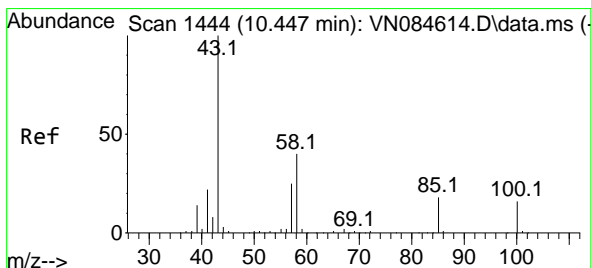
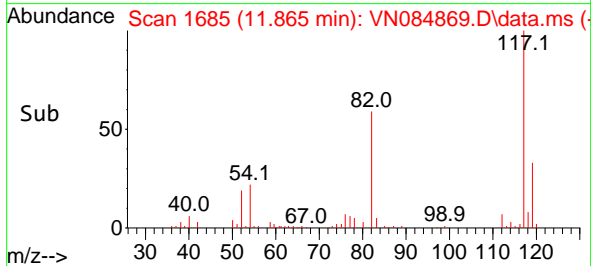
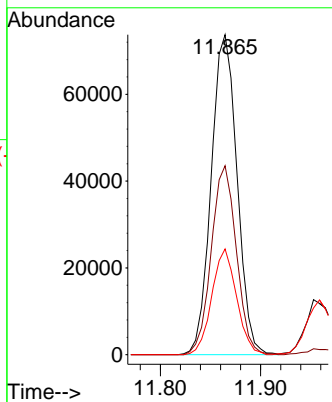
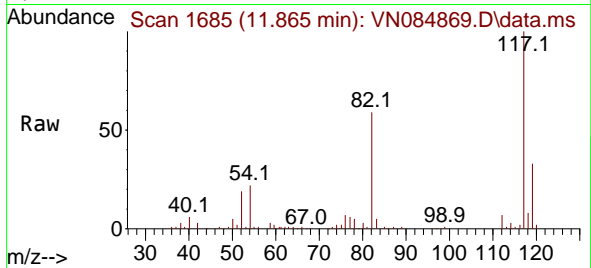


#57
 Chlorobenzene-d5
 Concen: 30.000 ug/l
 RT: 11.865 min Scan# 117
 Delta R.T. -0.000 min
 Lab File: VN084869.D
 Acq: 15 Nov 2024 14:59

Instrument : MSVOA_N
 ClientSampleId : VN1115WBSD01

Tgt Ion:117 Resp: 132133

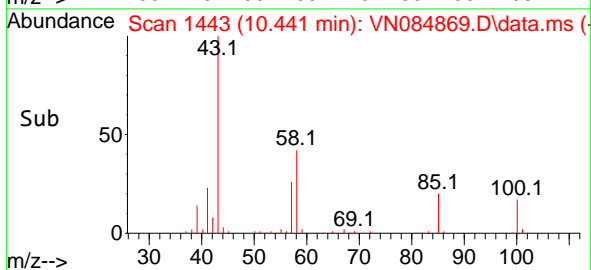
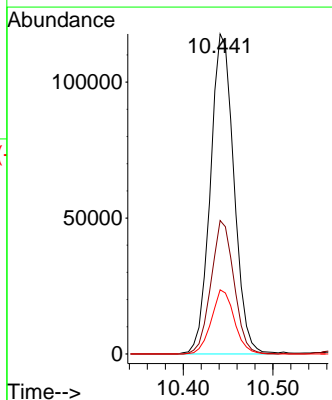
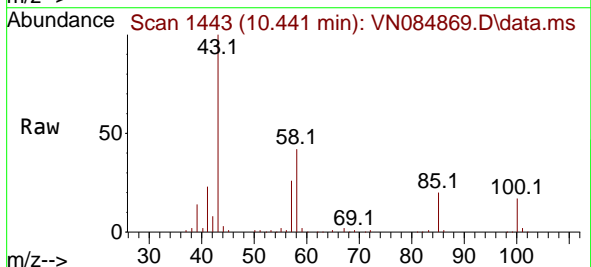
Ion	Ratio	Lower	Upper
117	100		
82	57.4	45.5	68.3
119	31.7	25.3	37.9

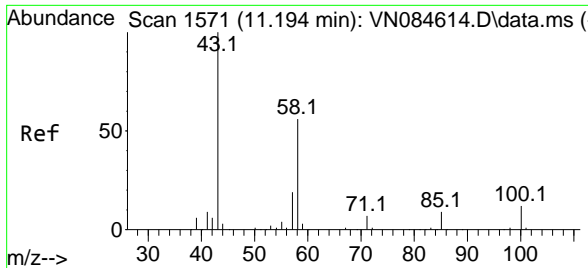


#58
 4-Methyl-2-Pentanone
 Concen: 103.008 ug/l
 RT: 10.441 min Scan# 1443
 Delta R.T. -0.006 min
 Lab File: VN084869.D
 Acq: 15 Nov 2024 14:59

Tgt Ion: 43 Resp: 214726

Ion	Ratio	Lower	Upper
43	100		
58	40.6	31.2	46.8
85	19.5	14.9	22.3



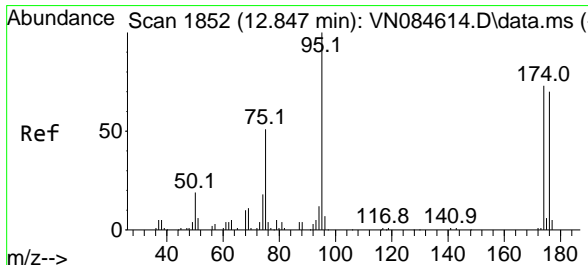
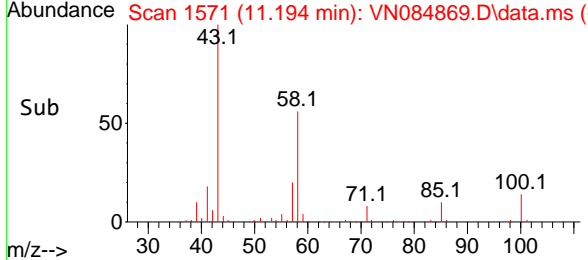
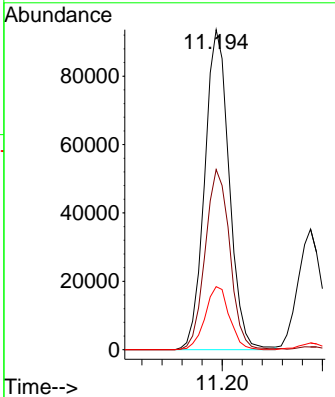
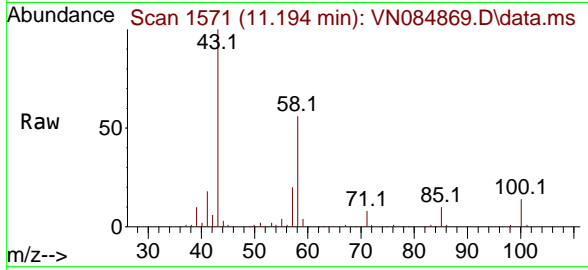


#59
 2-Hexanone
 Concen: 103.844 ug/l
 RT: 11.194 min Scan# 111
 Delta R.T. -0.000 min
 Lab File: VN084869.D
 Acq: 15 Nov 2024 14:59

Instrument : MSVOA_N
 ClientSampleId : VN1115WBSD01

Tgt Ion: 43 Resp: 158511

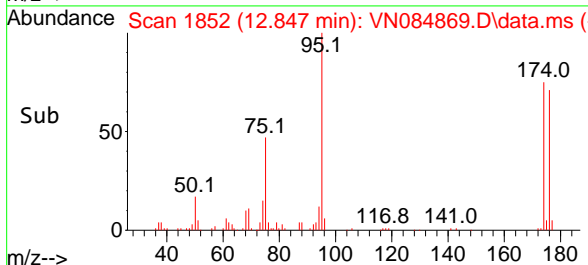
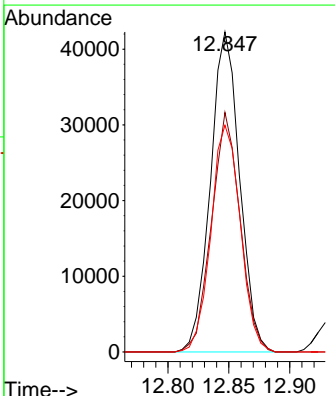
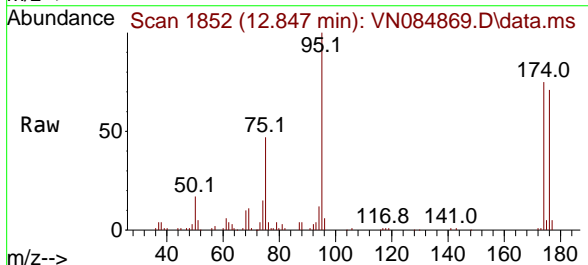
Ion	Ratio	Lower	Upper
43	100		
58	56.5	43.8	65.6
57	19.5	15.0	22.6

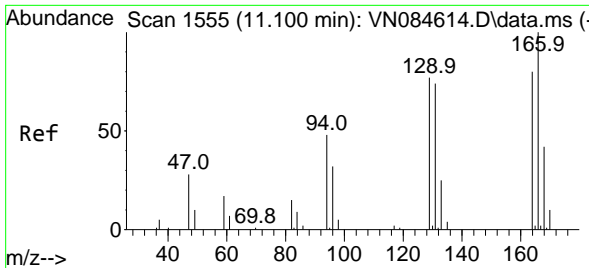


#60
 4-Bromofluorobenzene
 Concen: 31.035 ug/l
 RT: 12.847 min Scan# 1852
 Delta R.T. -0.000 min
 Lab File: VN084869.D
 Acq: 15 Nov 2024 14:59

Tgt Ion: 95 Resp: 70609

Ion	Ratio	Lower	Upper
95	100		
174	73.0	59.6	89.4
176	71.1	58.6	88.0



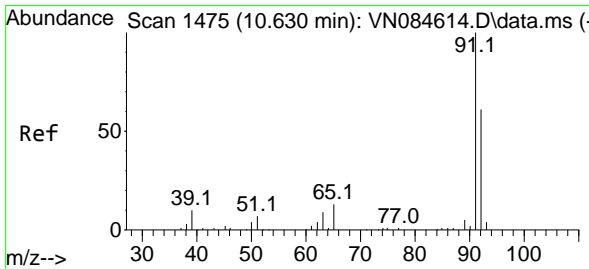
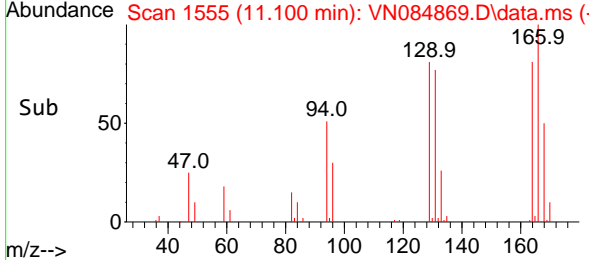
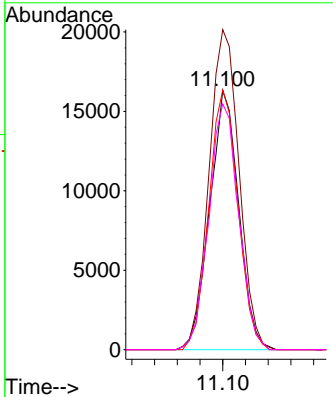
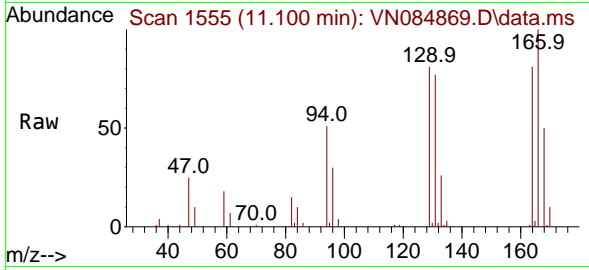


#61
 Tetrachloroethene
 Concen: 21.006 ug/l
 RT: 11.100 min Scan# 1110
 Delta R.T. -0.000 min
 Lab File: VN084869.D
 Acq: 15 Nov 2024 14:59

Instrument : MSVOA_N
 ClientSampleId : VN1115WBSD01

Tgt Ion:164 Resp: 29049

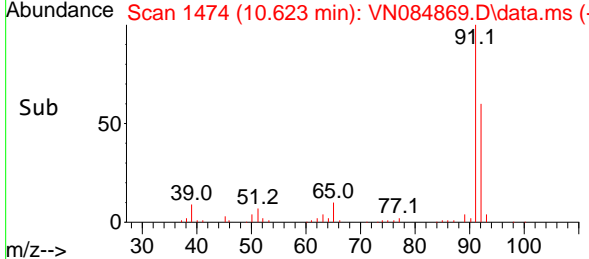
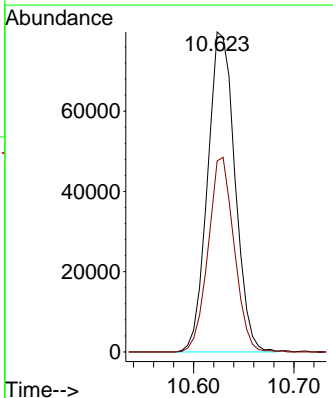
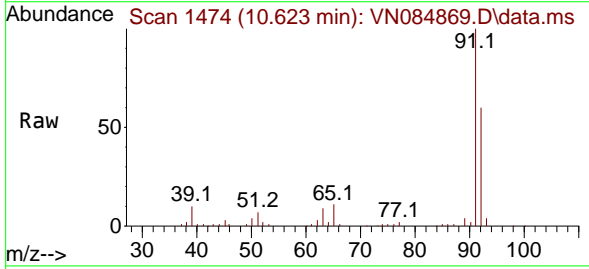
Ion	Ratio	Lower	Upper
164	100		
166	123.4	100.5	150.7
129	100.2	77.7	116.5
131	94.8	74.7	112.1

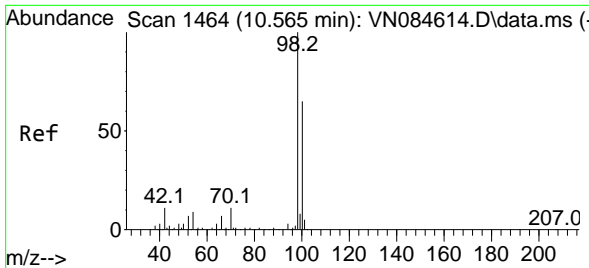


#62
 Toluene
 Concen: 20.092 ug/l
 RT: 10.623 min Scan# 1474
 Delta R.T. -0.006 min
 Lab File: VN084869.D
 Acq: 15 Nov 2024 14:59

Tgt Ion: 91 Resp: 151208

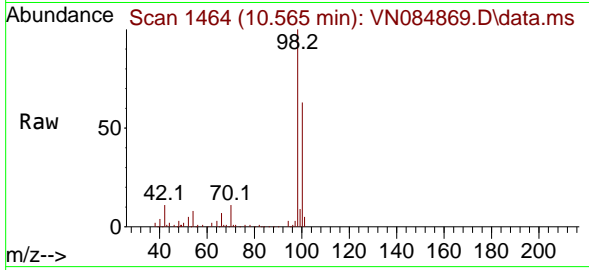
Ion	Ratio	Lower	Upper
91	100		
92	57.8	47.5	71.3



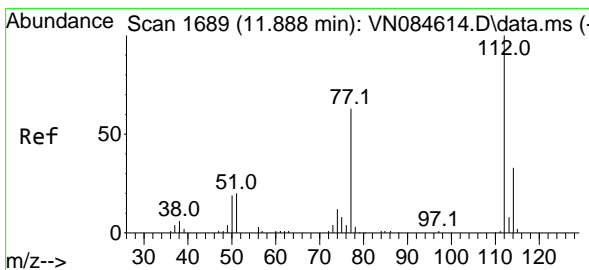
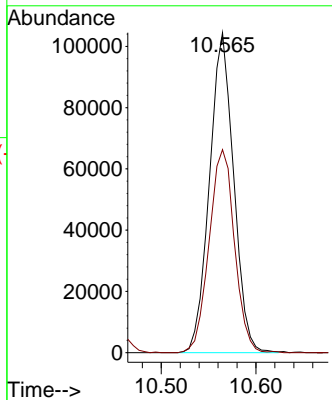
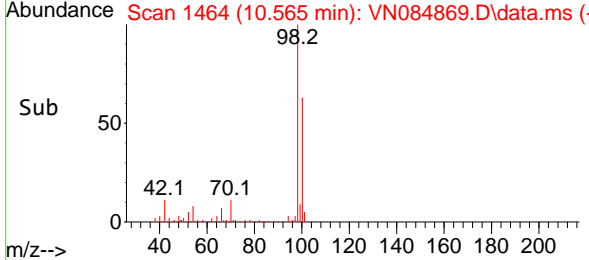


#63
 Toluene-d8
 Concen: 29.621 ug/l
 RT: 10.565 min Scan# 1464
 Delta R.T. -0.000 min
 Lab File: VN084869.D
 Acq: 15 Nov 2024 14:59

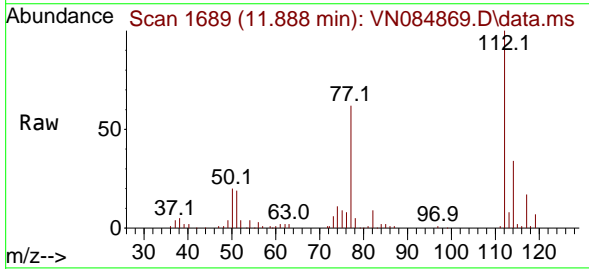
Instrument : MSVOA_N
 ClientSampleId : VN1115WBSD01



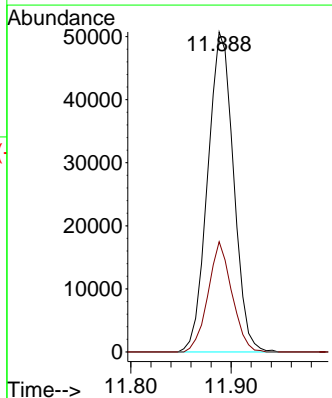
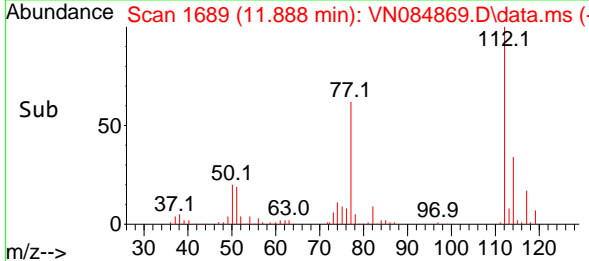
Tgt Ion: 98 Resp: 185283
 Ion Ratio Lower Upper
 98 100
 100 66.5 52.2 78.2

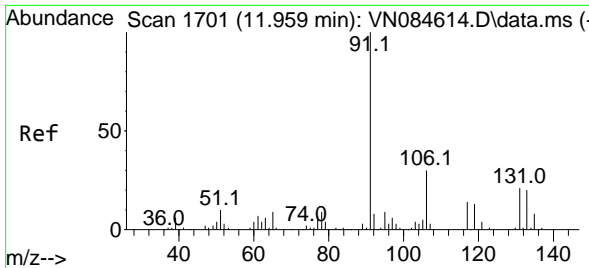


#64
 Chlorobenzene
 Concen: 20.020 ug/l
 RT: 11.888 min Scan# 1689
 Delta R.T. -0.000 min
 Lab File: VN084869.D
 Acq: 15 Nov 2024 14:59



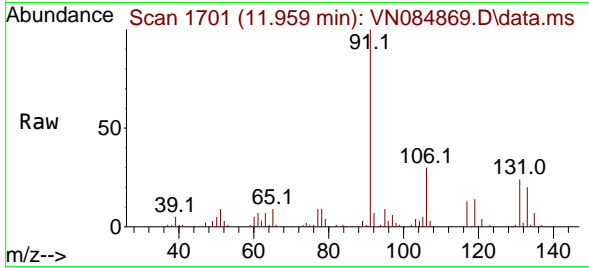
Tgt Ion: 112 Resp: 90954
 Ion Ratio Lower Upper
 112 100
 114 34.4 26.2 39.4



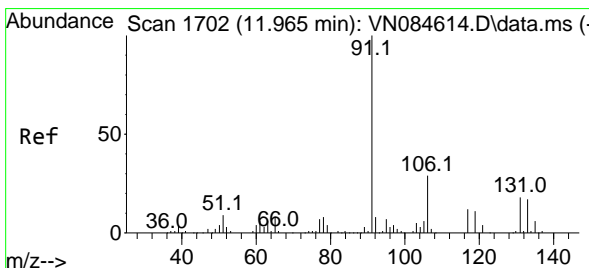
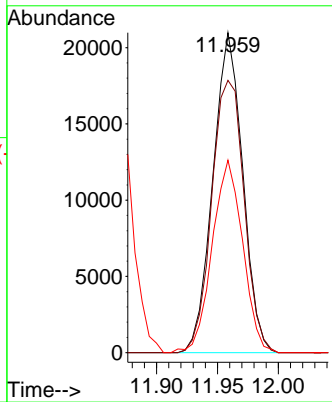
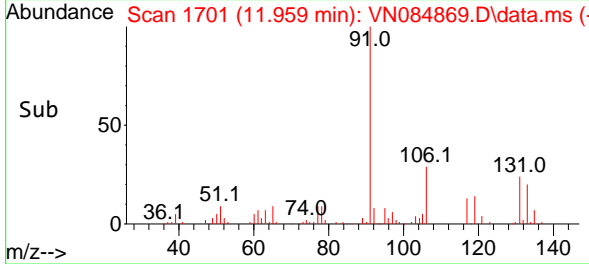


#65
 1,1,1,2-Tetrachloroethane
 Concen: 21.405 ug/l
 RT: 11.959 min Scan# 1701
 Delta R.T. -0.000 min
 Lab File: VN084869.D
 Acq: 15 Nov 2024 14:59

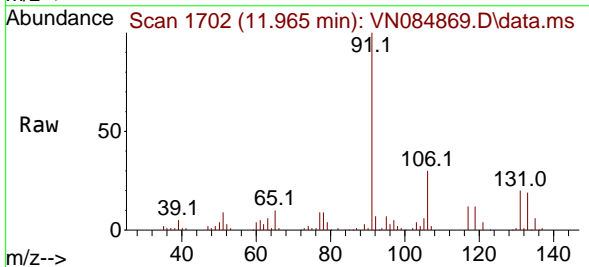
Instrument : MSVOA_N
 ClientSampleId : VN1115WBSD01



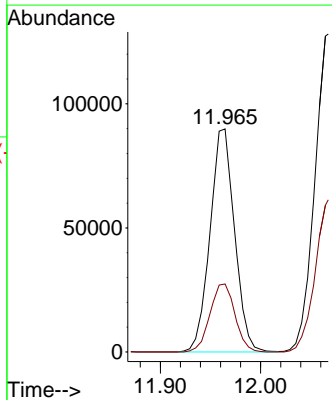
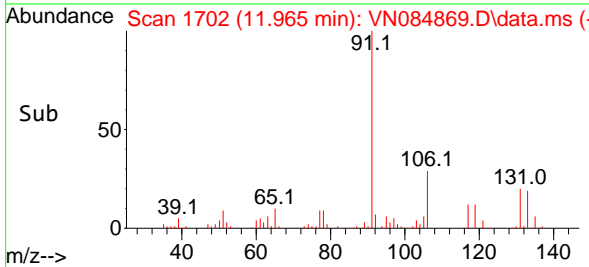
Tgt Ion:131 Resp: 35740
 Ion Ratio Lower Upper
 131 100
 133 92.8 0.0 189.2
 119 61.6 0.0 129.4

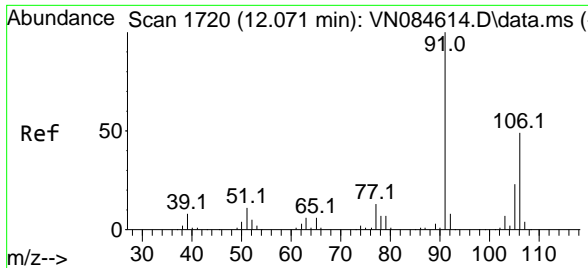


#66
 Ethyl Benzene
 Concen: 19.347 ug/l
 RT: 11.965 min Scan# 1702
 Delta R.T. -0.000 min
 Lab File: VN084869.D
 Acq: 15 Nov 2024 14:59



Tgt Ion: 91 Resp: 153019
 Ion Ratio Lower Upper
 91 100
 106 30.5 22.9 34.3

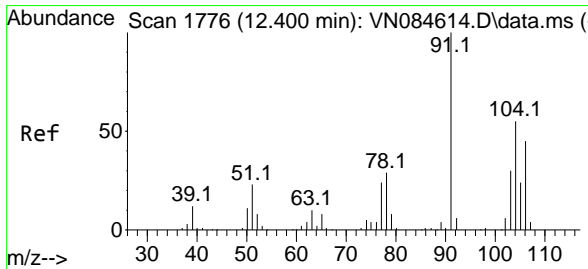
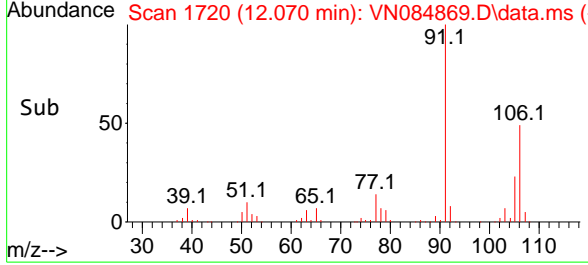
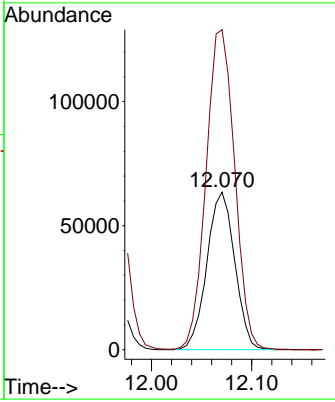
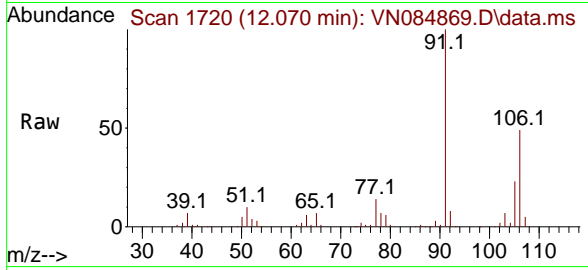




#67
 m/p-Xylenes
 Concen: 40.456 ug/l
 RT: 12.070 min Scan# 1720
 Delta R.T. -0.000 min
 Lab File: VN084869.D
 Acq: 15 Nov 2024 14:59

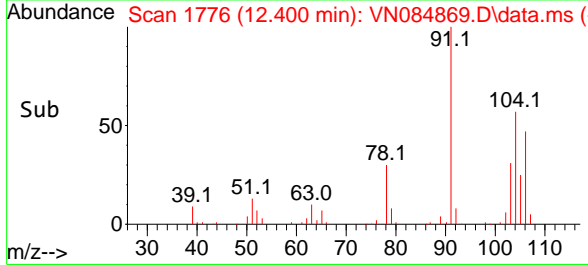
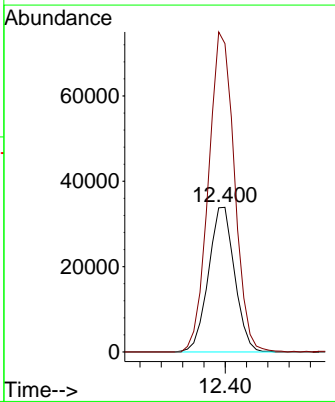
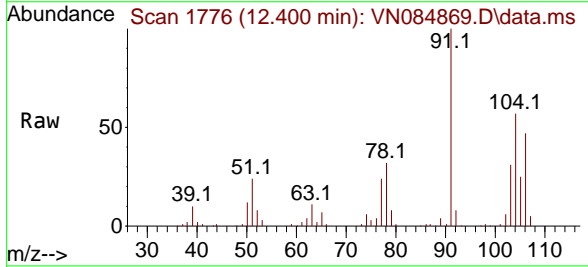
Instrument : MSVOA_N
 ClientSampleId : VN1115WBSD01

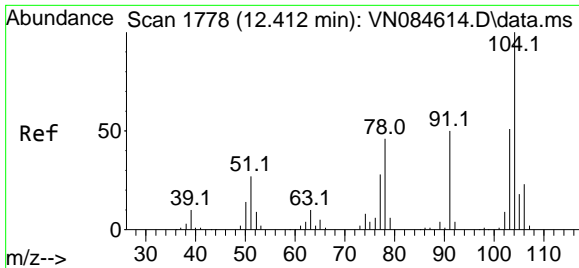
Tgt Ion:106 Resp: 122503
 Ion Ratio Lower Upper
 106 100
 91 208.9 168.1 252.1



#68
 o-Xylene
 Concen: 19.828 ug/l
 RT: 12.400 min Scan# 1776
 Delta R.T. -0.000 min
 Lab File: VN084869.D
 Acq: 15 Nov 2024 14:59

Tgt Ion:106 Resp: 57915
 Ion Ratio Lower Upper
 106 100
 91 218.9 107.7 322.9

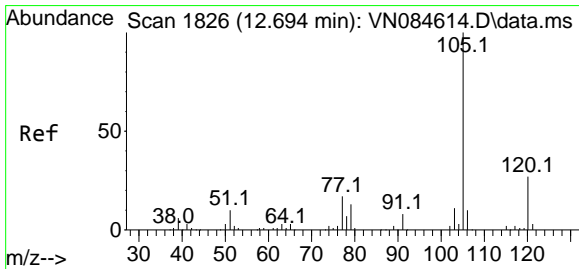
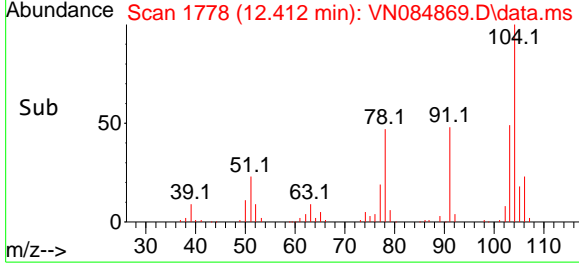
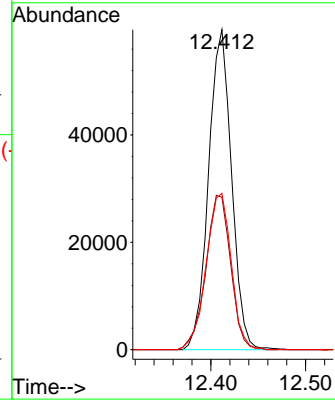
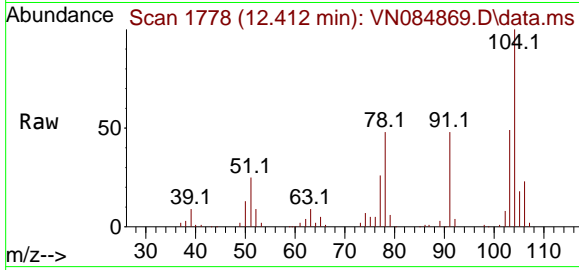




#69
 Styrene
 Concen: 20.518 ug/l
 RT: 12.412 min Scan# 1778
 Delta R.T. -0.000 min
 Lab File: VN084869.D
 Acq: 15 Nov 2024 14:59

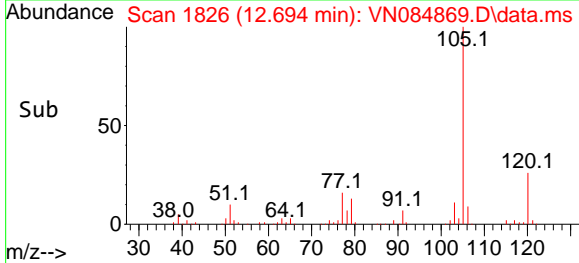
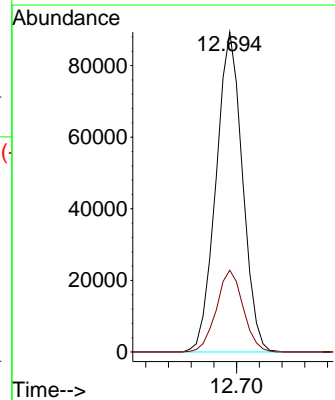
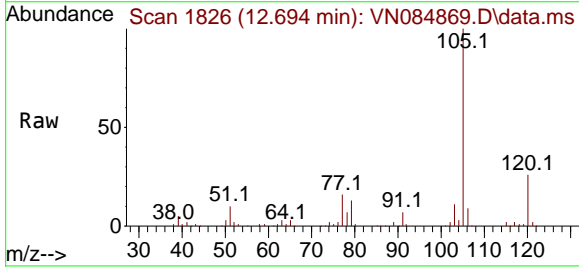
Instrument : MSVOA_N
 ClientSampleId : VN1115WBSD01

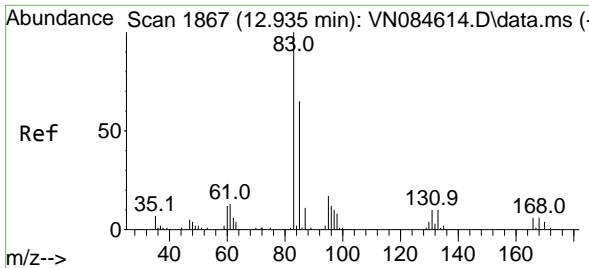
Tgt Ion	Resp	Lower	Upper
104	100		
78	52.1	41.5	62.3
103	53.3	44.6	67.0



#70
 Isopropylbenzene
 Concen: 19.912 ug/l
 RT: 12.694 min Scan# 1826
 Delta R.T. -0.000 min
 Lab File: VN084869.D
 Acq: 15 Nov 2024 14:59

Tgt Ion	Resp	Lower	Upper
105	100		
120	25.8	18.7	34.7

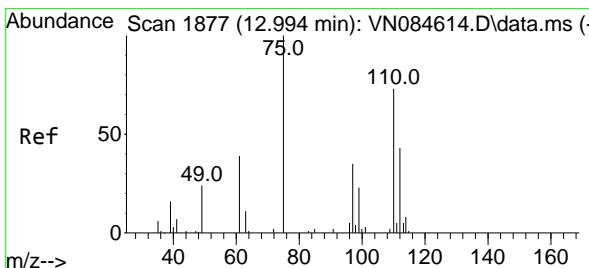
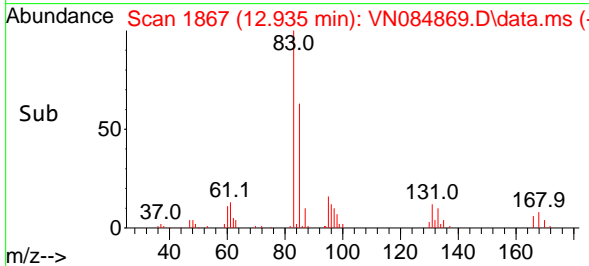
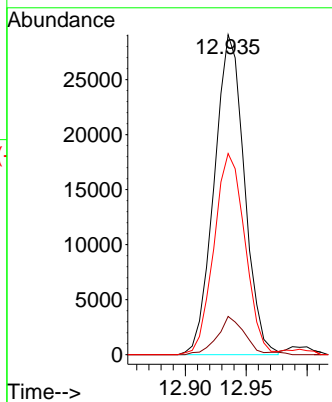
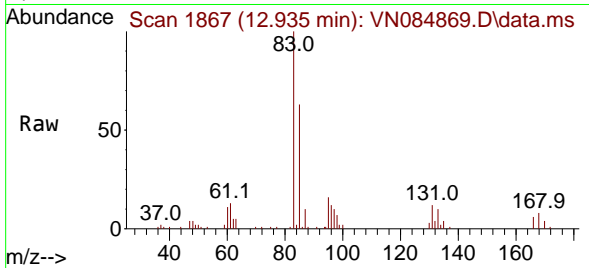




#71
 1,1,2-Tetrachloroethane
 Concen: 21.312 ug/l
 RT: 12.935 min Scan# 1867
 Delta R.T. -0.000 min
 Lab File: VN084869.D
 Acq: 15 Nov 2024 14:59

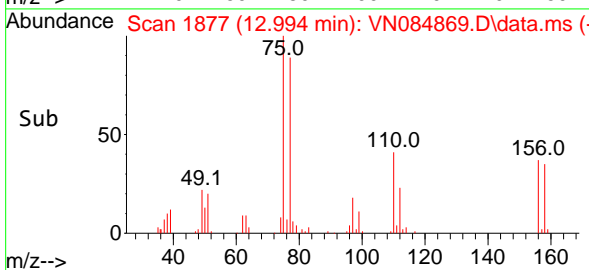
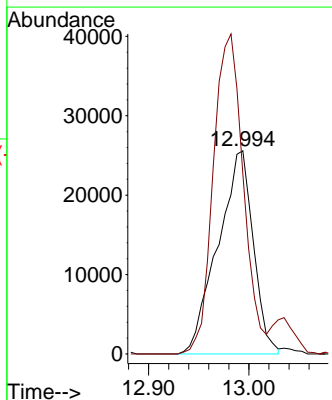
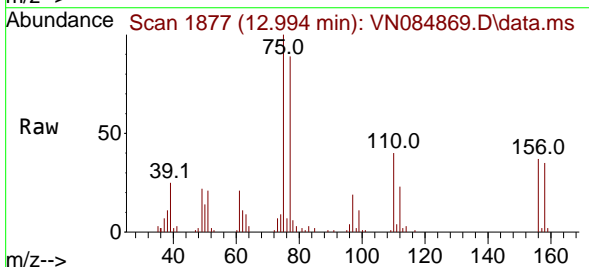
Instrument : MSVOA_N
 ClientSampleId : VN1115WBSD01

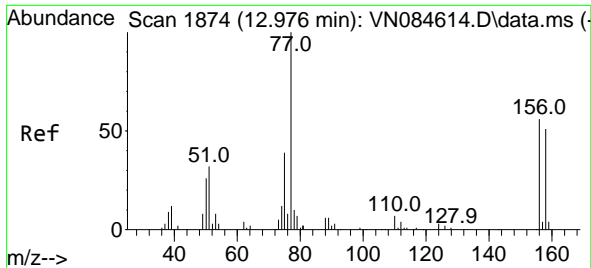
Tgt Ion	Resp	Lower	Upper
83	50122	100	
131	10.6	5.1	15.3
85	64.7	33.3	99.9



#72
 1,2,3-Trichloropropane
 Concen: 31.170 ug/l
 RT: 12.994 min Scan# 1877
 Delta R.T. -0.000 min
 Lab File: VN084869.D
 Acq: 15 Nov 2024 14:59

Tgt Ion	Resp	Lower	Upper
75	62597	100	
77	133.9	0.0	358.4

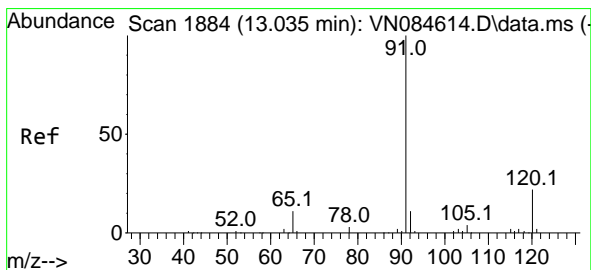
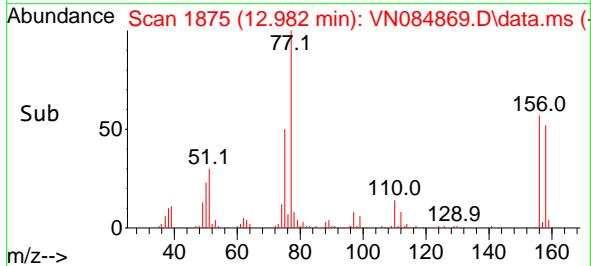
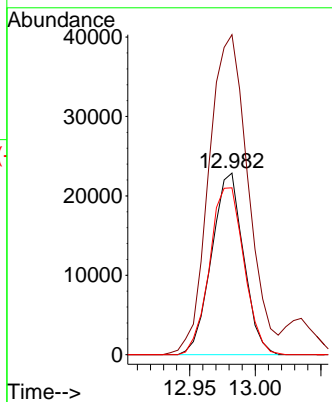
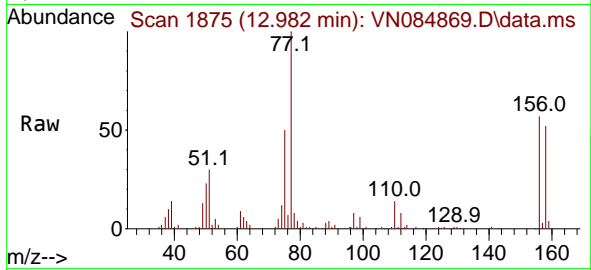




#73
 Bromobenzene
 Concen: 20.740 ug/l
 RT: 12.982 min Scan# 1875
 Delta R.T. 0.006 min
 Lab File: VN084869.D
 Acq: 15 Nov 2024 14:59

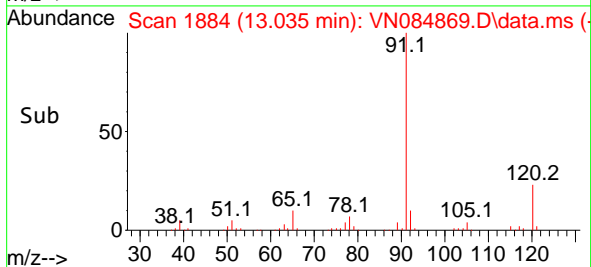
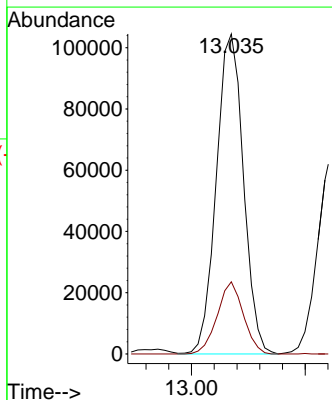
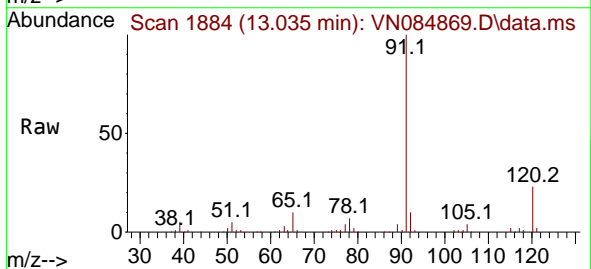
Instrument : MSVOA_N
 ClientSampleId : VN1115WBSD01

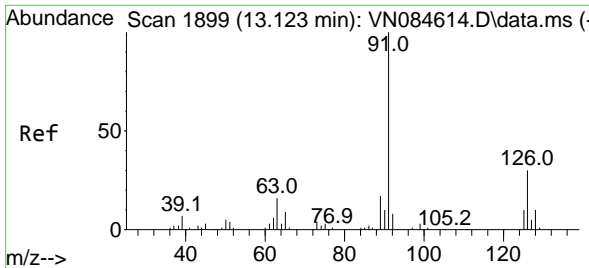
Tgt Ion	Resp	Lower	Upper
156	38814		
77	216.0	0.0	427.6
158	99.1	0.0	191.6



#74
 n-propylbenzene
 Concen: 20.432 ug/l
 RT: 13.035 min Scan# 1884
 Delta R.T. -0.000 min
 Lab File: VN084869.D
 Acq: 15 Nov 2024 14:59

Tgt Ion	Resp	Lower	Upper
91	173358		
120	21.7	0.0	44.0

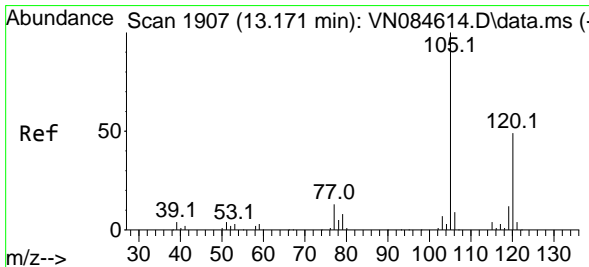
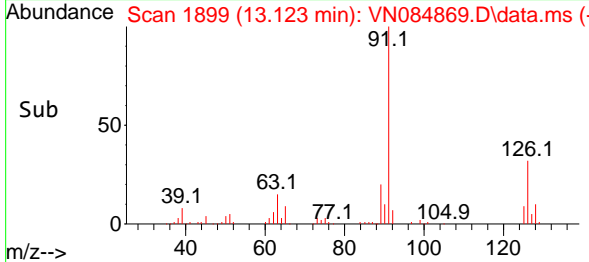
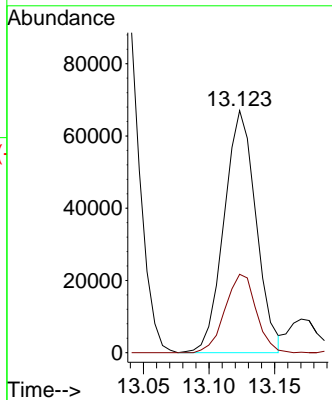
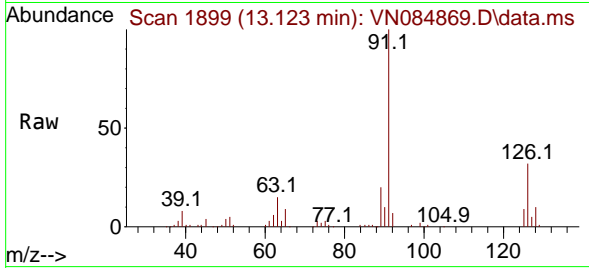




#75
 2-Chlorotoluene
 Concen: 20.647 ug/l
 RT: 13.123 min Scan# 1899
 Delta R.T. -0.000 min
 Lab File: VN084869.D
 Acq: 15 Nov 2024 14:59

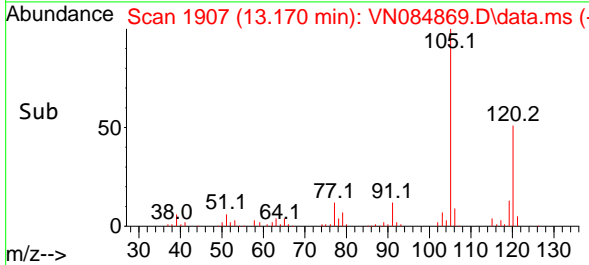
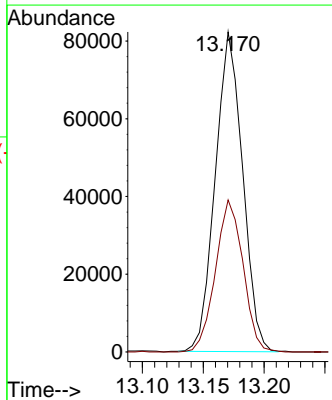
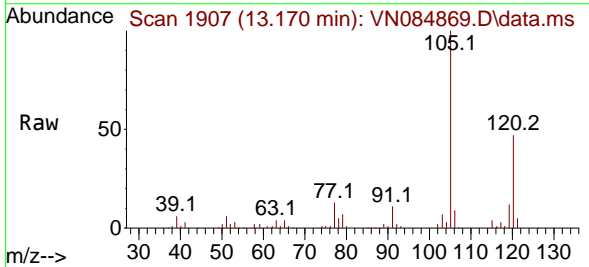
Instrument : MSVOA_N
 ClientSampleId : VN1115WBSD01

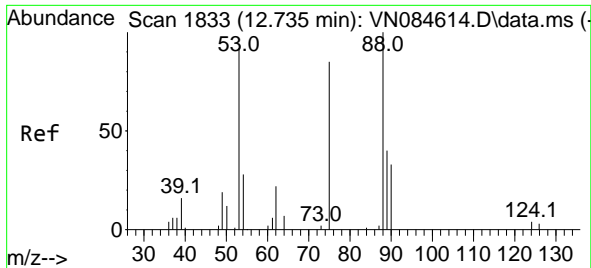
Tgt Ion: 91 Resp: 114083
 Ion Ratio Lower Upper
 91 100
 126 31.4 0.0 60.8



#76
 1,3,5-Trimethylbenzene
 Concen: 20.725 ug/l
 RT: 13.170 min Scan# 1907
 Delta R.T. -0.000 min
 Lab File: VN084869.D
 Acq: 15 Nov 2024 14:59

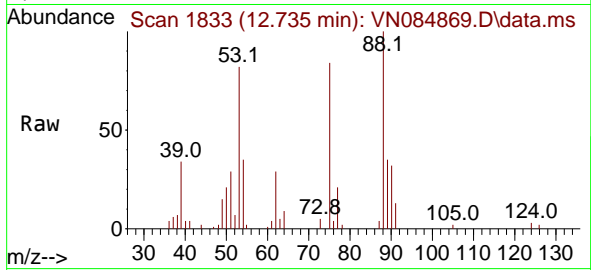
Tgt Ion: 105 Resp: 128489
 Ion Ratio Lower Upper
 105 100
 120 47.9 0.0 96.8



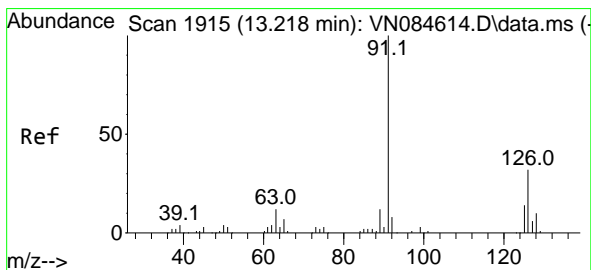
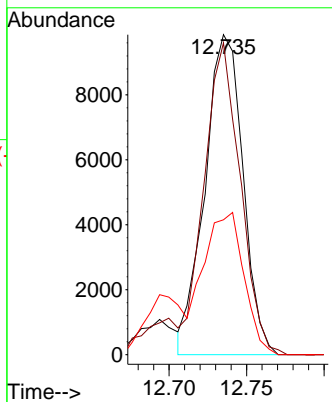
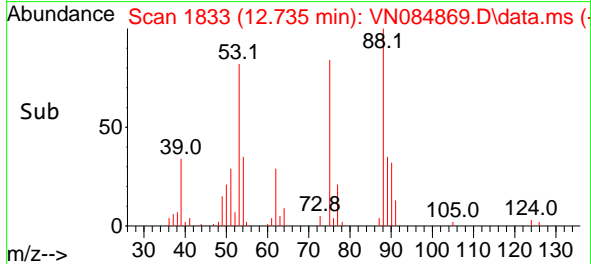


#77
 t-1,4-Dichloro-2-butene
 Concen: 20.419 ug/l
 RT: 12.735 min Scan# 1833
 Delta R.T. -0.000 min
 Lab File: VN084869.D
 Acq: 15 Nov 2024 14:59

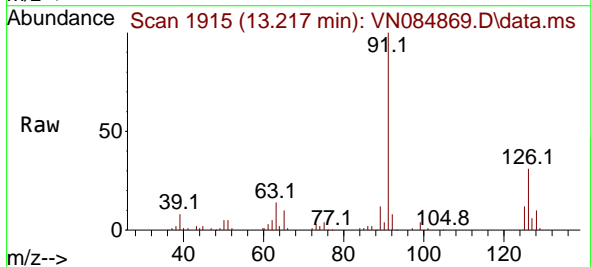
Instrument : MSVOA_N
 ClientSampleId : VN1115WBSD01



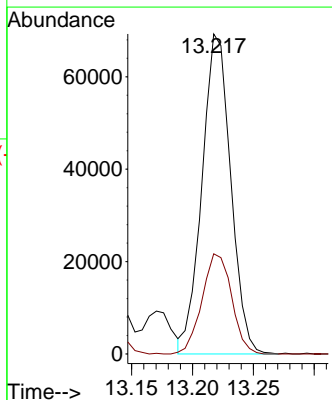
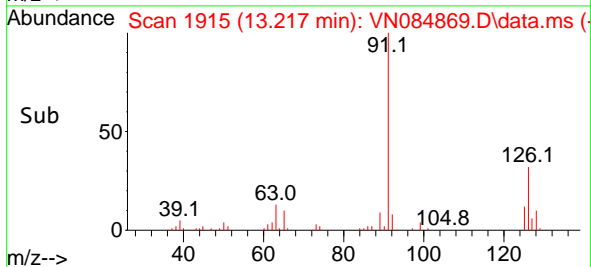
Tgt Ion: 75 Resp: 16818
 Ion Ratio Lower Upper
 75 100
 53 95.9 52.4 157.2
 89 42.1 26.0 78.0

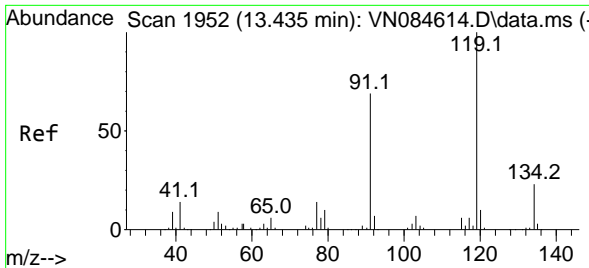


#78
 4-Chlorotoluene
 Concen: 20.391 ug/l
 RT: 13.217 min Scan# 1915
 Delta R.T. -0.000 min
 Lab File: VN084869.D
 Acq: 15 Nov 2024 14:59



Tgt Ion: 91 Resp: 113835
 Ion Ratio Lower Upper
 91 100
 126 32.2 0.0 63.4



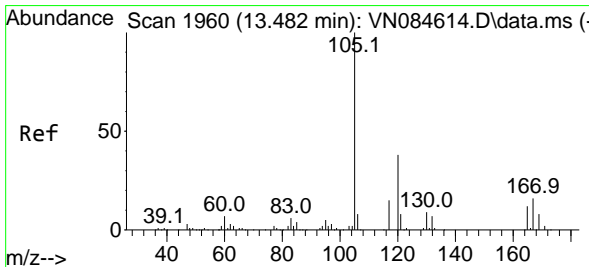
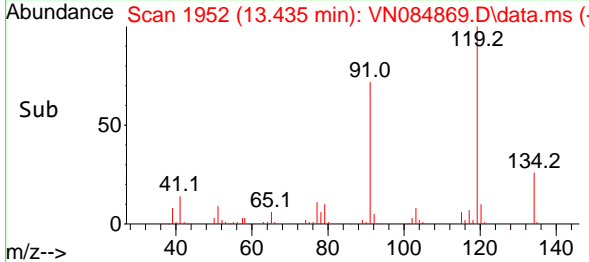
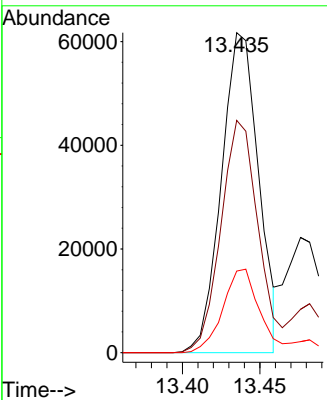
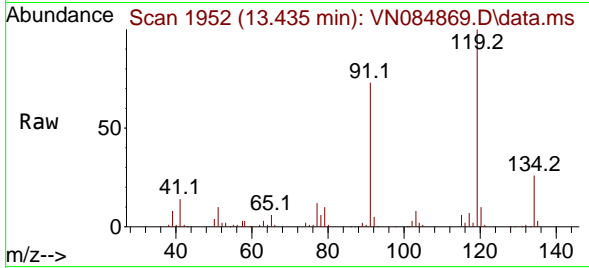


#79
 tert-butylbenzene
 Concen: 20.092 ug/l
 RT: 13.435 min Scan# 1952
 Delta R.T. -0.000 min
 Lab File: VN084869.D
 Acq: 15 Nov 2024 14:59

Instrument : MSVOA_N
 ClientSampleId : VN1115WBSD01

Tgt Ion:119 Resp: 103008

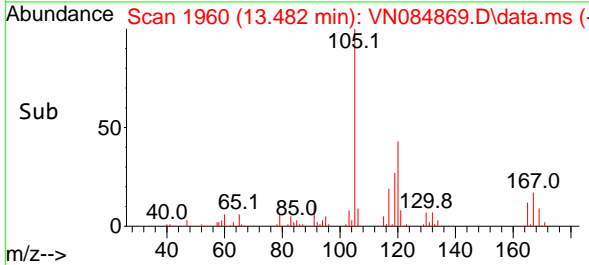
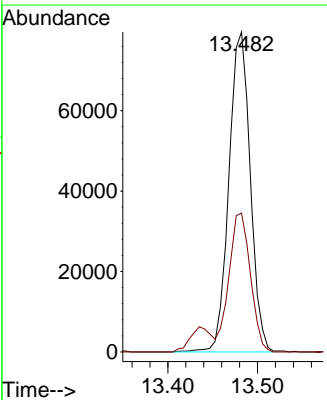
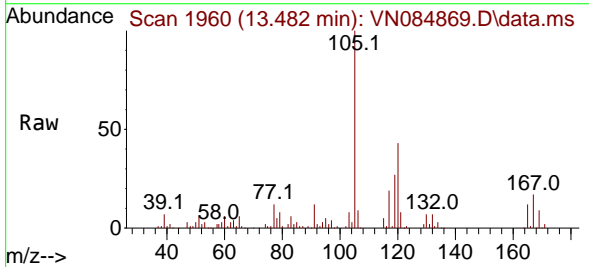
Ion	Ratio	Lower	Upper
119	100		
91	73.1	0.0	143.2
134	25.5	0.0	49.4

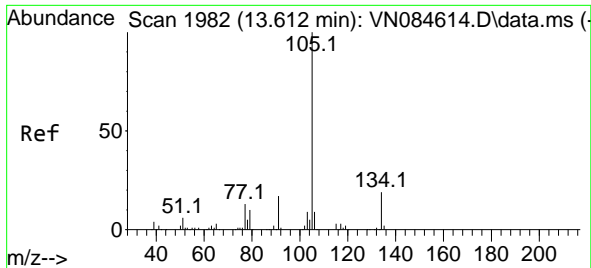


#80
 1,2,4-Trimethylbenzene
 Concen: 21.002 ug/l
 RT: 13.482 min Scan# 1960
 Delta R.T. -0.000 min
 Lab File: VN084869.D
 Acq: 15 Nov 2024 14:59

Tgt Ion:105 Resp: 131357

Ion	Ratio	Lower	Upper
105	100		
120	43.6	0.0	90.4

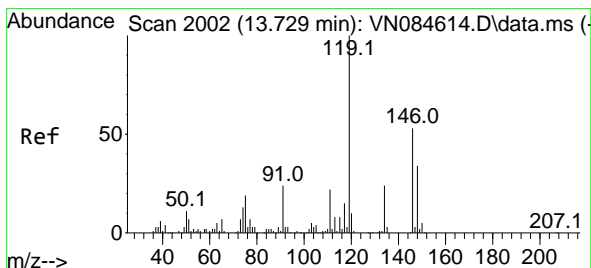
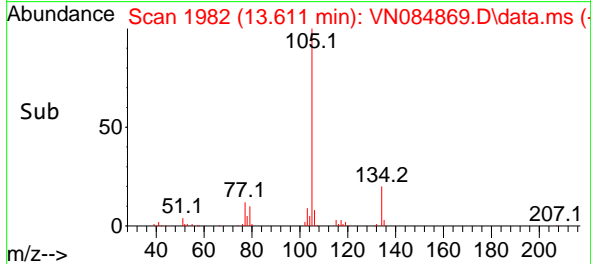
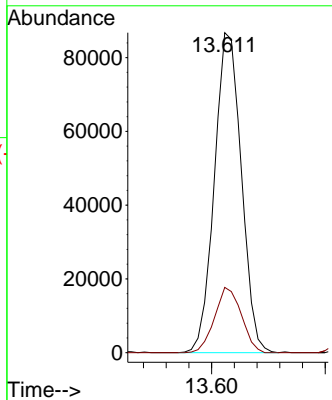
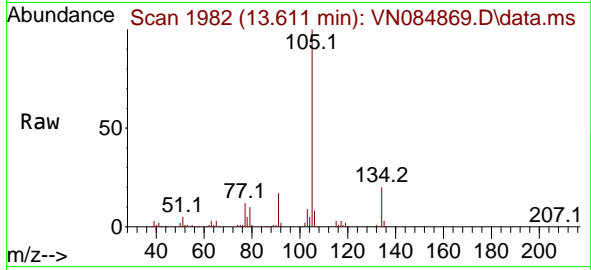




#81
 sec-Butylbenzene
 Concen: 20.250 ug/l
 RT: 13.611 min Scan# 1982
 Delta R.T. -0.000 min
 Lab File: VN084869.D
 Acq: 15 Nov 2024 14:59

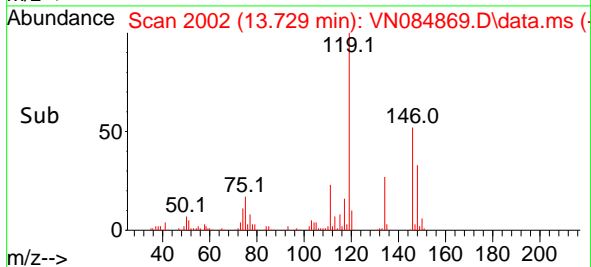
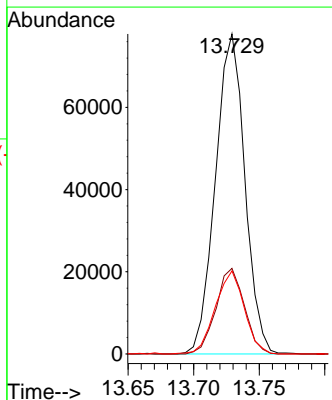
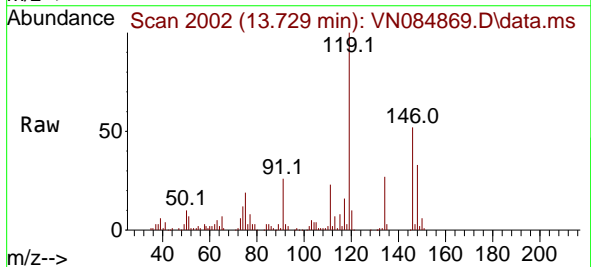
Instrument : MSVOA_N
 ClientSampleId : VN1115WBSD01

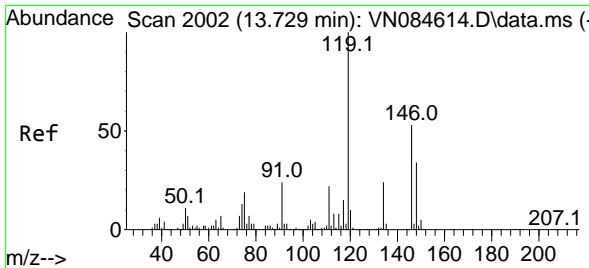
Tgt Ion:105 Resp: 143056
 Ion Ratio Lower Upper
 105 100
 134 20.2 0.0 39.0



#82
 p-Isopropyltoluene
 Concen: 20.478 ug/l
 RT: 13.729 min Scan# 2002
 Delta R.T. -0.000 min
 Lab File: VN084869.D
 Acq: 15 Nov 2024 14:59

Tgt Ion:119 Resp: 121558
 Ion Ratio Lower Upper
 119 100
 134 25.8 0.0 51.4
 91 25.5 0.0 50.4

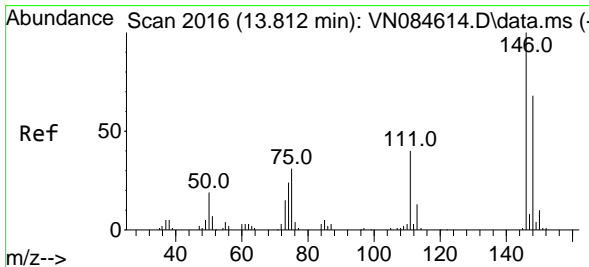
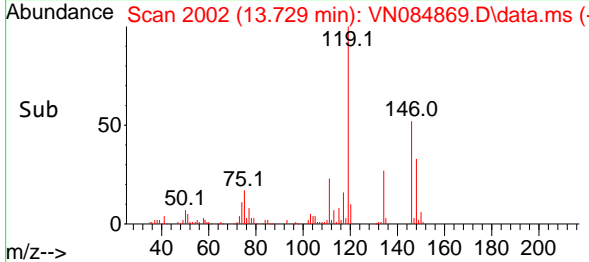
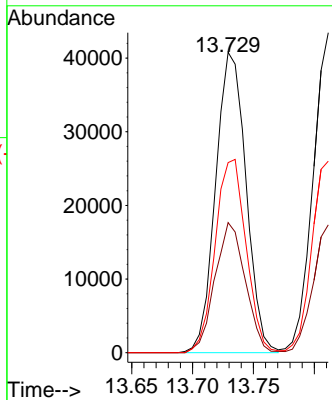
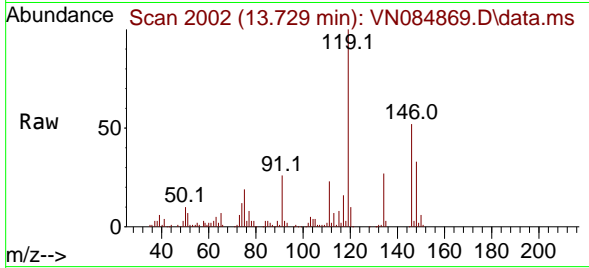




#83
 1,3-Dichlorobenzene
 Concen: 20.493 ug/l
 RT: 13.729 min Scan# 2002
 Delta R.T. -0.000 min
 Lab File: VN084869.D
 Acq: 15 Nov 2024 14:59

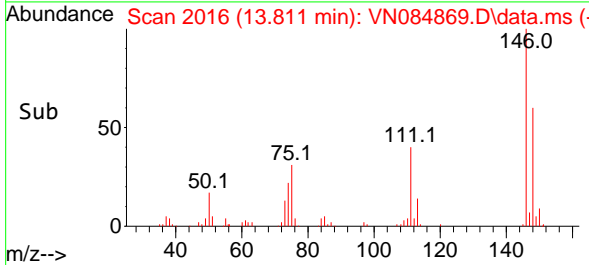
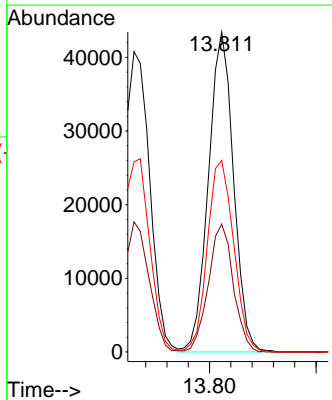
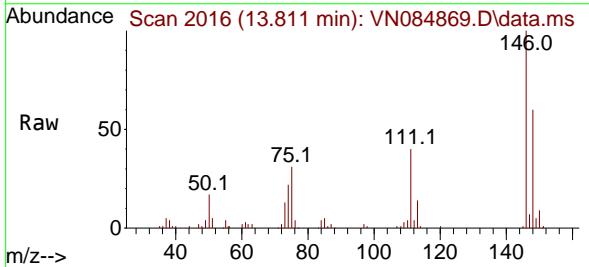
Instrument : MSVOA_N
 ClientSampleId : VN1115WBSD01

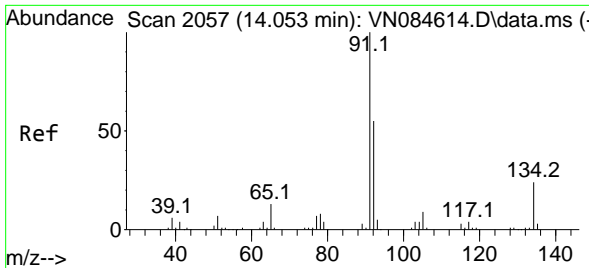
Tgt Ion	Resp	Lower	Upper
146	100		
111	43.2	21.0	63.0
148	65.2	31.3	93.8



#84
 1,4-Dichlorobenzene
 Concen: 20.786 ug/l
 RT: 13.811 min Scan# 2016
 Delta R.T. -0.000 min
 Lab File: VN084869.D
 Acq: 15 Nov 2024 14:59

Tgt Ion	Resp	Lower	Upper
146	100		
111	39.6	20.2	60.5
148	62.8	32.6	98.0

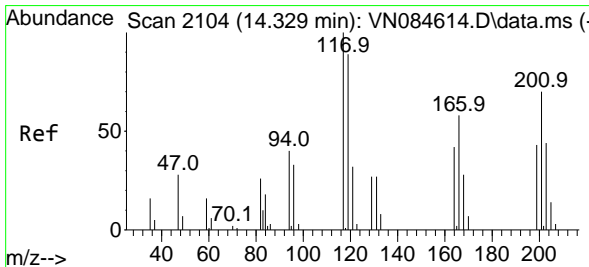
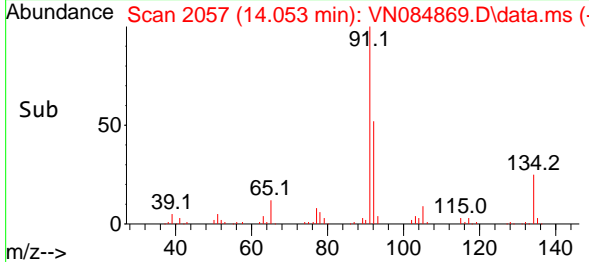
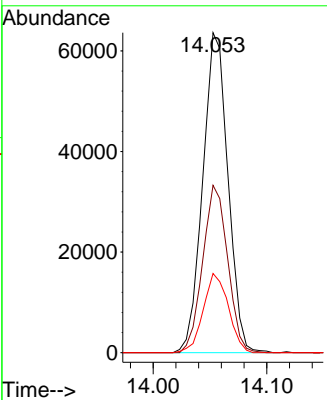
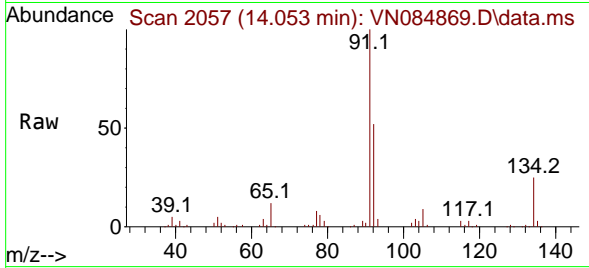




#85
 n-Butylbenzene
 Concen: 19.687 ug/l
 RT: 14.053 min Scan# 2057
 Delta R.T. -0.000 min
 Lab File: VN084869.D
 Acq: 15 Nov 2024 14:59

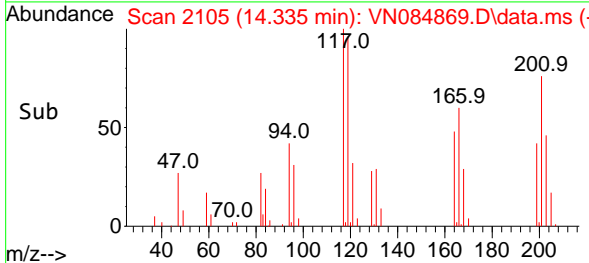
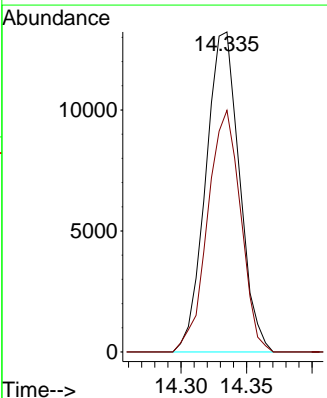
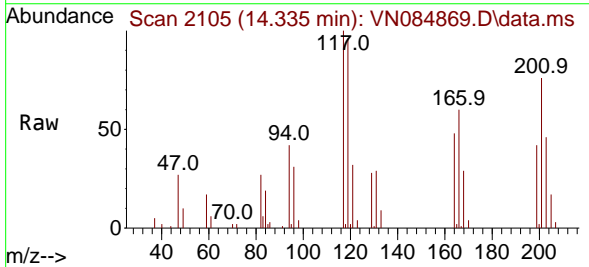
Instrument : MSVOA_N
 ClientSampleId : VN1115WBSD01

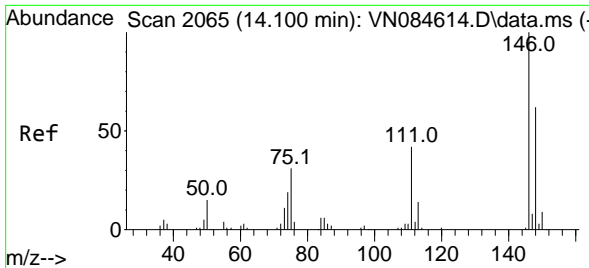
Tgt Ion	Resp	Lower	Upper
91	98151	100	
92	51.7	0.0	106.2
134	24.7	0.0	48.2



#86
 Hexachloroethane
 Concen: 19.457 ug/l
 RT: 14.335 min Scan# 2105
 Delta R.T. 0.006 min
 Lab File: VN084869.D
 Acq: 15 Nov 2024 14:59

Tgt Ion	Resp	Lower	Upper
117	23621	100	
201	74.1	34.4	103.3

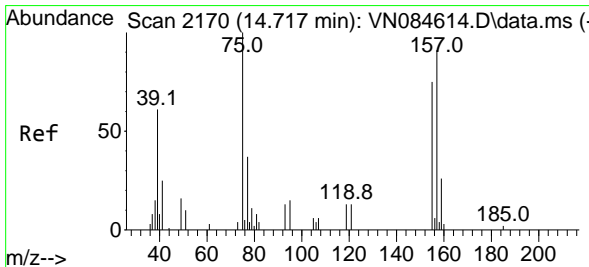
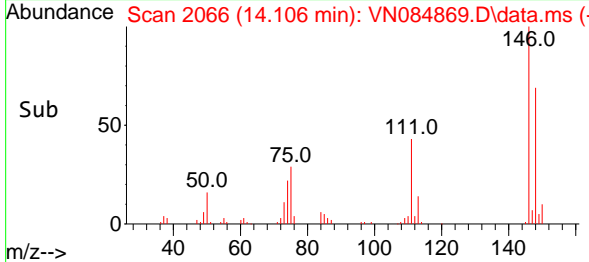
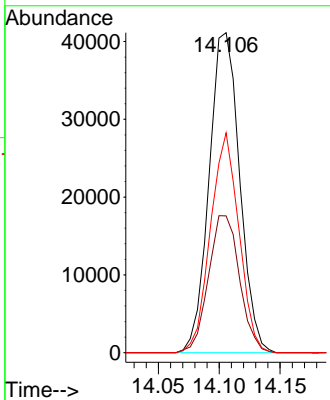
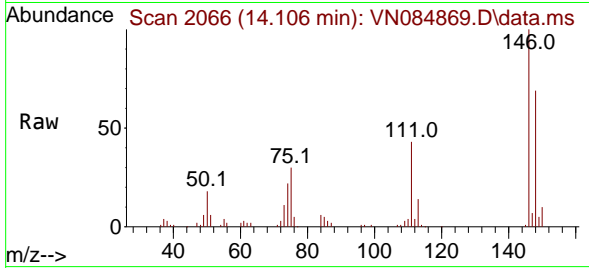




#87
 1,2-Dichlorobenzene
 Concen: 21.082 ug/l
 RT: 14.106 min Scan# 2066
 Delta R.T. 0.006 min
 Lab File: VN084869.D
 Acq: 15 Nov 2024 14:59

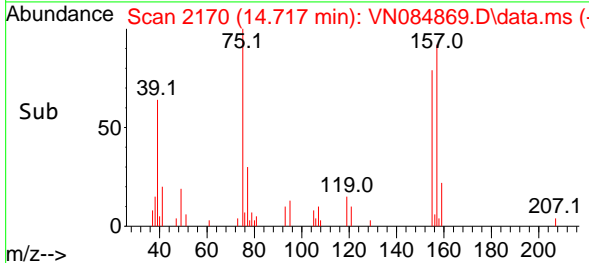
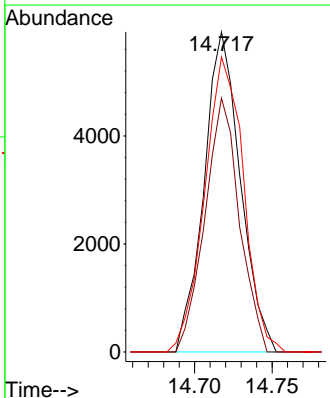
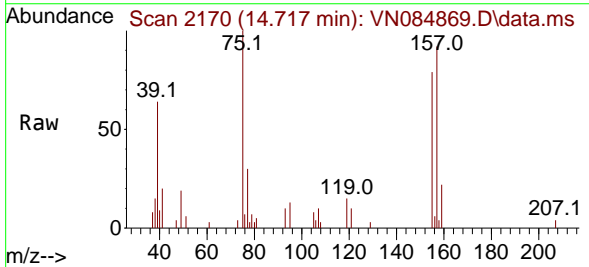
Instrument : MSVOA_N
 ClientSampleId : VN1115WBSD01

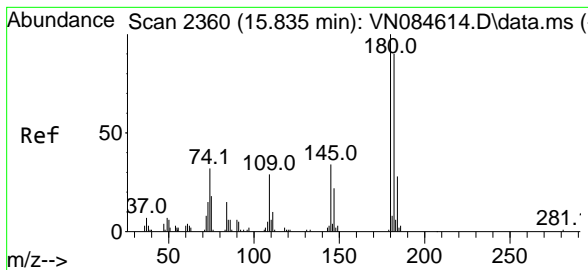
Tgt Ion	Resp	Lower	Upper
146	100		
111	43.6	22.4	67.0
148	63.9	32.6	98.0



#88
 1,2-Dibromo-3-Chloropropane
 Concen: 21.331 ug/l
 RT: 14.717 min Scan# 2170
 Delta R.T. -0.000 min
 Lab File: VN084869.D
 Acq: 15 Nov 2024 14:59

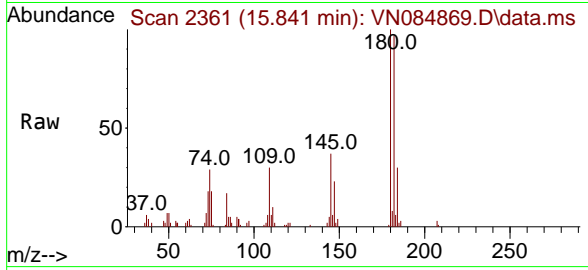
Tgt Ion	Resp	Lower	Upper
75	100		
155	75.1	61.8	92.6
157	98.4	74.7	112.1





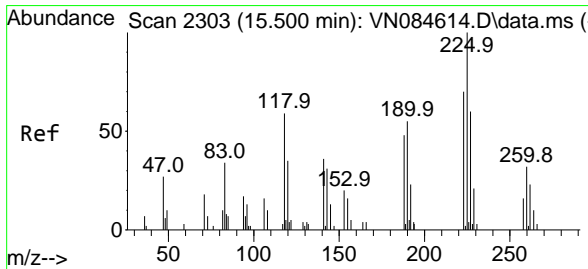
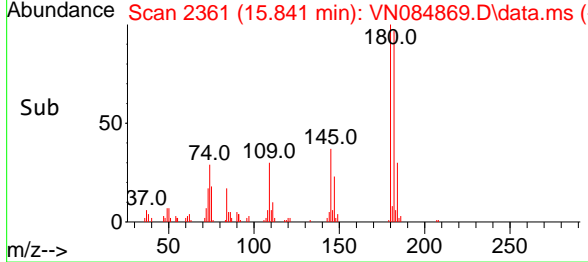
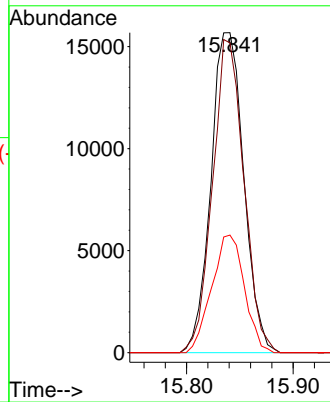
#89
 1,2,4-Trichlorobenzene
 Concen: 20.209 ug/l
 RT: 15.841 min Scan# 21
 Delta R.T. 0.006 min
 Lab File: VN084869.D
 Acq: 15 Nov 2024 14:59

Instrument :
 MSVOA_N
 ClientSampleId :
 VN1115WBSD01



Tgt Ion:180 Resp: 33559

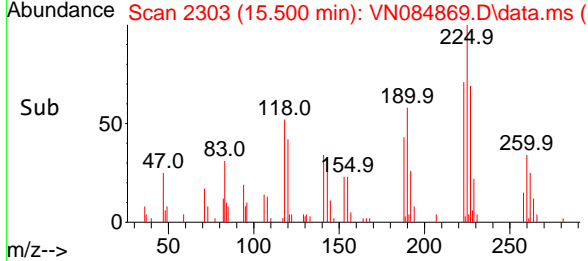
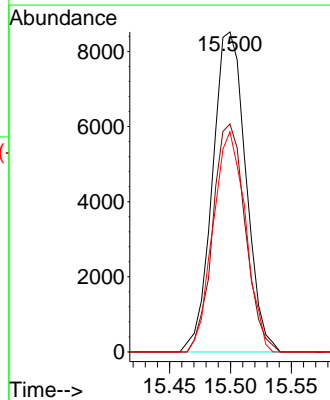
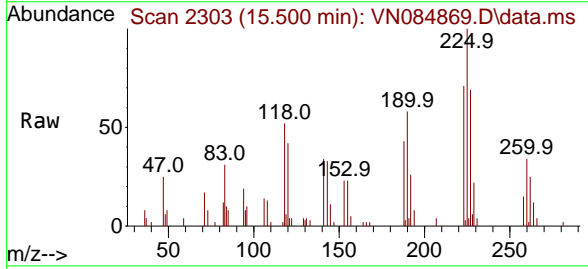
Ion	Ratio	Lower	Upper
180	100		
182	93.3	73.0	109.6
145	36.7	26.5	39.7

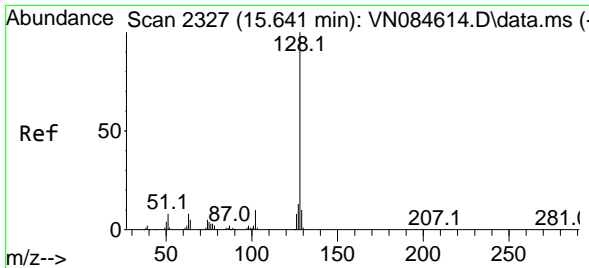


#90
 Hexachlorobutadiene
 Concen: 22.369 ug/l
 RT: 15.500 min Scan# 2303
 Delta R.T. -0.000 min
 Lab File: VN084869.D
 Acq: 15 Nov 2024 14:59

Tgt Ion:225 Resp: 16226

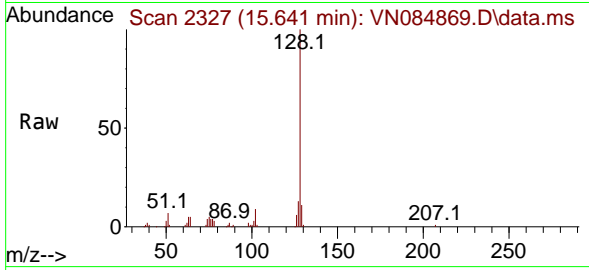
Ion	Ratio	Lower	Upper
225	100		
223	69.4	0.0	138.8
227	67.0	0.0	123.2



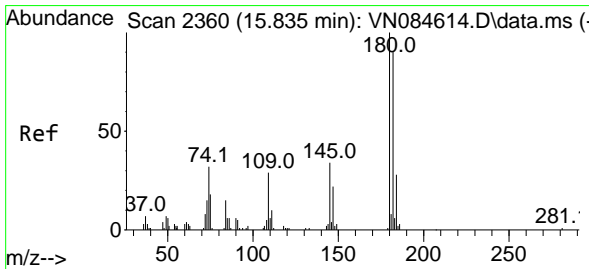
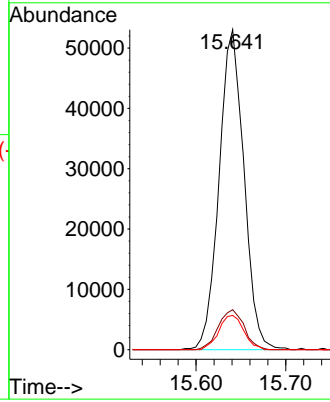
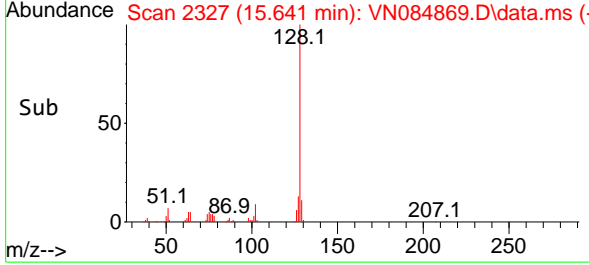


#91
 Naphthalene
 Concen: 19.218 ug/l
 RT: 15.641 min Scan# 21
 Delta R.T. -0.000 min
 Lab File: VN084869.D
 Acq: 15 Nov 2024 14:59

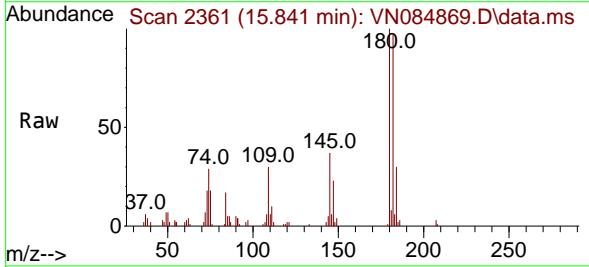
Instrument :
 MSVOA_N
 ClientSampleId :
 VN1115WBSD01



Tgt Ion:128 Resp: 101921
 Ion Ratio Lower Upper
 128 100
 127 13.0 10.3 15.5
 129 10.7 8.6 12.8



#92
 1,2,3-Trichlorobenzene
 Concen: 20.209 ug/l
 RT: 15.841 min Scan# 2361
 Delta R.T. 0.006 min
 Lab File: VN084869.D
 Acq: 15 Nov 2024 14:59



Tgt Ion:180 Resp: 33559
 Ion Ratio Lower Upper
 180 100
 182 93.3 0.0 182.6
 145 36.7 0.0 66.2

