

Data Path : Z:\voasrv\HPCHEM1\MSVOA\_N\Data\VN111524\  
 Data File : VN084873.D  
 Acq On : 15 Nov 2024 16:48  
 Operator : JC\MD  
 Sample : P4867-04  
 Misc : 5.0mL/MSVOA\_N/WATER  
 ALS Vial : 9 Sample Multiplier: 1

Instrument :  
 MSVOA\_N  
 ClientSampleId :  
 TT-072-IDWGW-20241113

Quant Time: Nov 15 22:26:49 2024  
 Quant Method : Z:\voasrv\HPCHEM1\MSVOA\_N\methods\624N103124W.M  
 Quant Title : METHOD 624 VOLATILE ORGANIC ANALYSIS  
 QLast Update : Fri Nov 01 02:38:04 2024  
 Response via : Initial Calibration

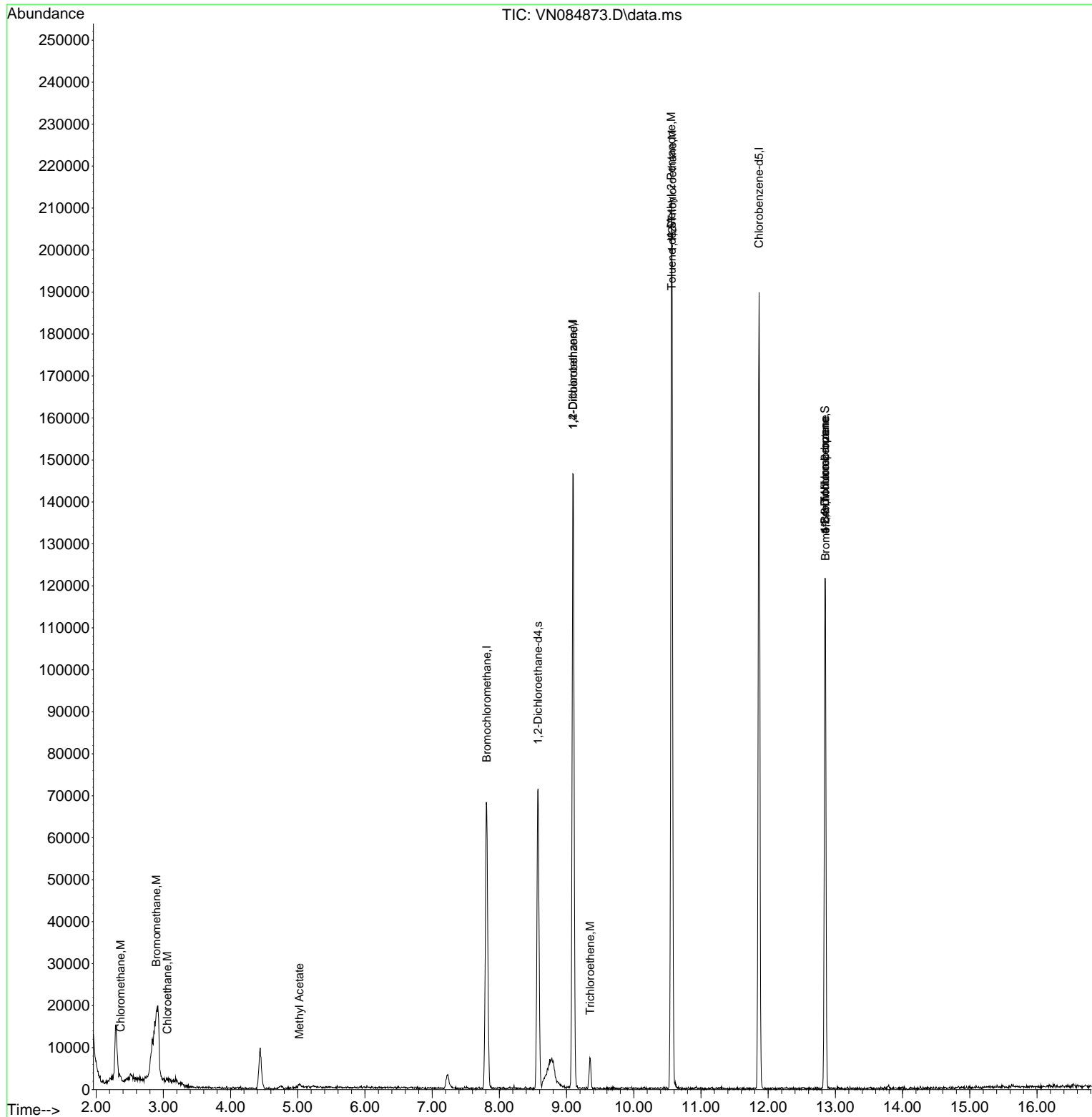
Compound	R.T.	QIon	Response	Conc	Units	Dev(Min)
Internal Standards						
1) Bromochloromethane	7.812	128	25557	30.000	ug/l	0.00
28) 1,4-Difluorobenzene	9.100	114	125147	30.000	ug/l	0.00
57) Chlorobenzene-d5	11.865	117	108897	30.000	ug/l	0.00
System Monitoring Compounds						
27) 1,2-Dichloroethane-d4	8.577	65	60280	29.339	ug/l	0.00
Spiked Amount	30.000	Range 91 - 110	Recovery =	97.800%		
60) 4-Bromofluorobenzene	12.847	95	43609	23.258	ug/l	0.00
Spiked Amount	30.000	Range 63 - 112	Recovery =	77.533%		
63) Toluene-d8	10.565	98	146534	28.424	ug/l	0.00
Spiked Amount	30.000	Range 91 - 112	Recovery =	94.733%		
Target Compounds						
						Qvalue
3) Chloromethane	2.365	50	493	0.275	ug/l #	59
5) Bromomethane	2.895	94	246	0.292	ug/l #	4
6) Chloroethane	3.059	64	615	0.564	ug/l #	47
12) Methyl Acetate	5.024	43	629	0.271	ug/l #	32
36) 1,2-Dichloroethane	9.094	62	4646	2.242	ug/l #	74
37) Trichloroethene	9.353	130	2902	2.065	ug/l	95
50) 1,1,2-Trichloroethane	10.571	97	5070	3.602	ug/l #	1
56) Bromoform	12.853	173	464	0.420	ug/l #	1
58) 4-Methyl-2-Pentanone	10.559	43	614	0.357	ug/l #	15
72) 1,2,3-Trichloropropane	12.847	75	22739	13.739	ug/l #	1
77) t-1,4-Dichloro-2-butene	12.847	75	22739	33.499	ug/l #	7

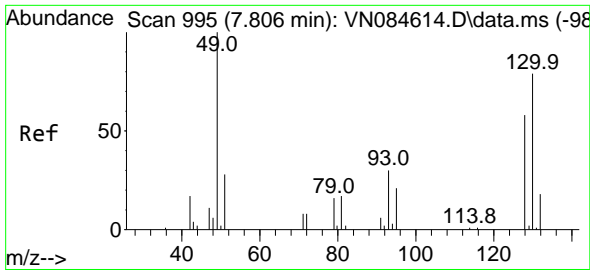
(#) = qualifier out of range (m) = manual integration (+) = signals summed

Data Path : Z:\voasrv\HPCHEM1\MSVOA\_N\Data\VN111524\  
 Data File : VN084873.D  
 Acq On : 15 Nov 2024 16:48  
 Operator : JC\MD  
 Sample : P4867-04  
 Misc : 5.0mL/MSVOA\_N/WATER  
 ALS Vial : 9 Sample Multiplier: 1

Instrument :  
 MSVOA\_N  
 ClientSampleId :  
 TT-072-IDWGW-20241113

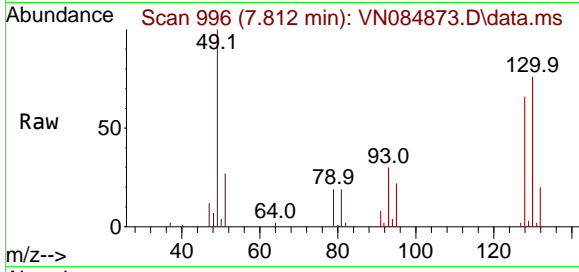
Quant Time: Nov 15 22:26:49 2024  
 Quant Method : Z:\voasrv\HPCHEM1\MSVOA\_N\methods\624N103124W.M  
 Quant Title : METHOD 624 VOLATILE ORGANIC ANALYSIS  
 QLast Update : Fri Nov 01 02:38:04 2024  
 Response via : Initial Calibration



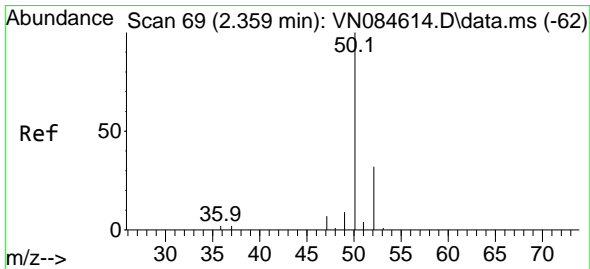
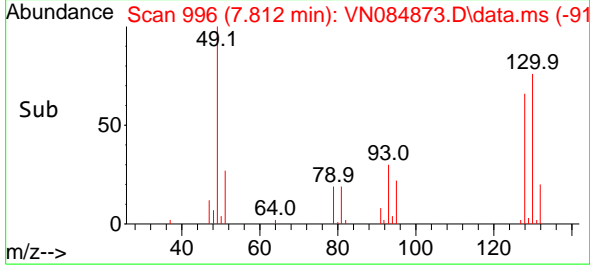
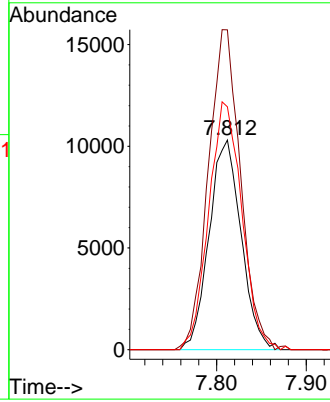


#1  
 Bromochloromethane  
 Concen: 30.000 ug/l  
 RT: 7.812 min Scan# 995  
 Delta R.T. 0.006 min  
 Lab File: VN084873.D  
 Acq: 15 Nov 2024 16:48

Instrument : MSVOA\_N  
 ClientSampleId : TT-072-IDWGW-20241113

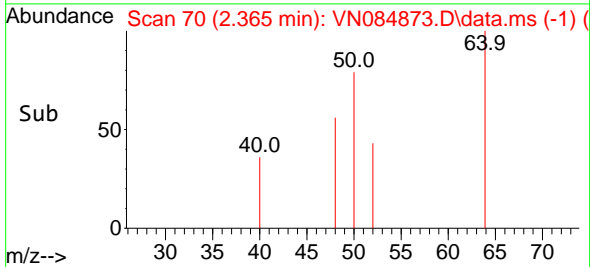
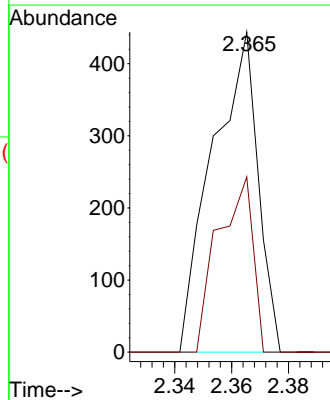
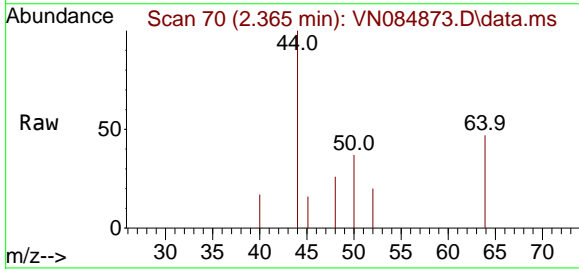


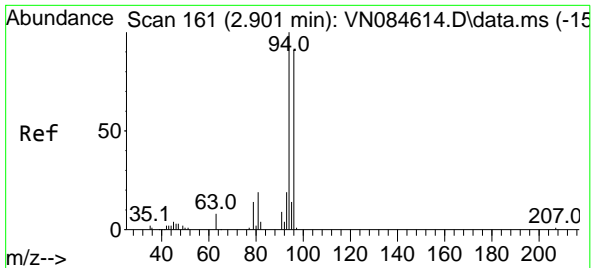
Tgt Ion: 128 Resp: 25557  
 Ion Ratio Lower Upper  
 128 100  
 49 152.9 0.0 427.0  
 130 122.0 0.0 322.2



#3  
 Chloromethane  
 Concen: 0.275 ug/l  
 RT: 2.365 min Scan# 70  
 Delta R.T. 0.006 min  
 Lab File: VN084873.D  
 Acq: 15 Nov 2024 16:48

Tgt Ion: 50 Resp: 493  
 Ion Ratio Lower Upper  
 50 100  
 52 54.7 25.5 38.3#

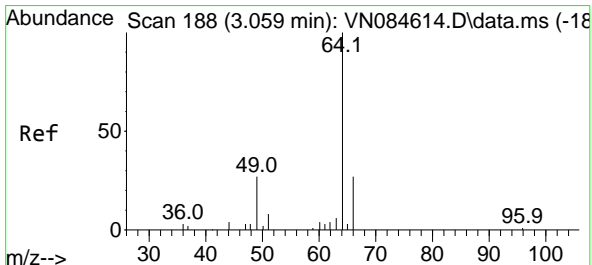
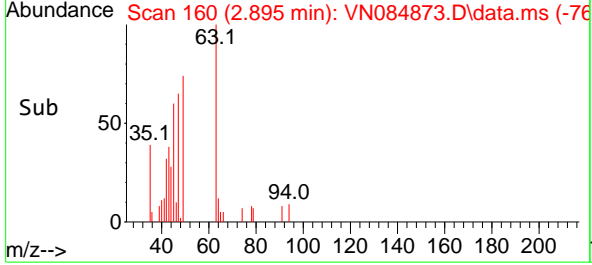
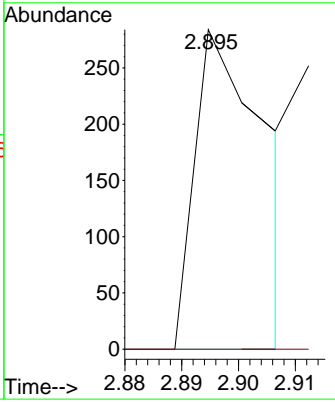
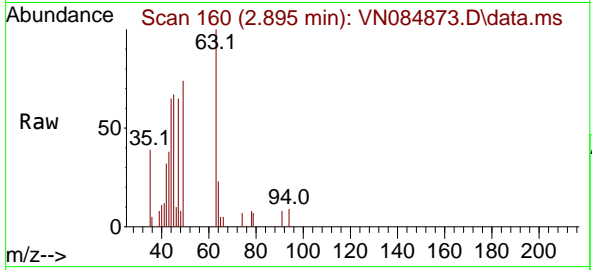




#5  
 Bromomethane  
 Concen: 0.292 ug/l  
 RT: 2.895 min Scan# 161  
 Delta R.T. -0.006 min  
 Lab File: VN084873.D  
 Acq: 15 Nov 2024 16:48

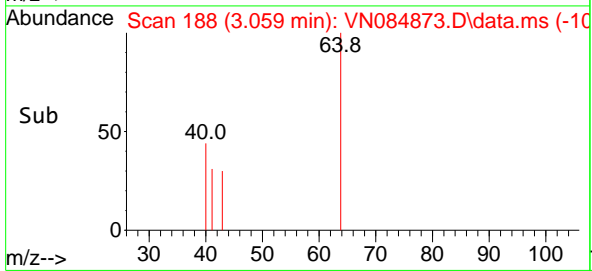
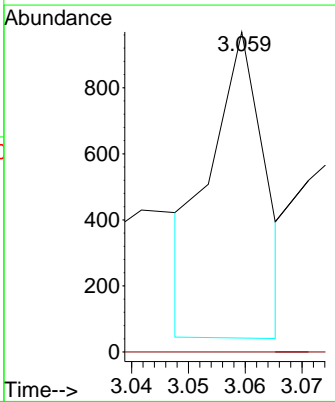
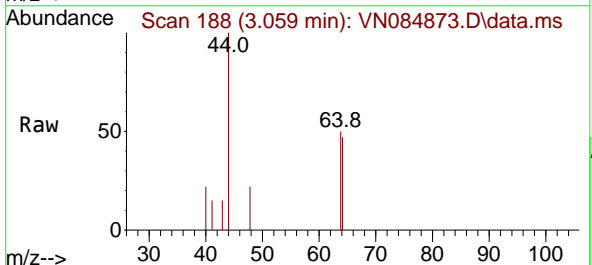
Instrument : MSVOA\_N  
 ClientSampleId : TT-072-IDWGW-20241113

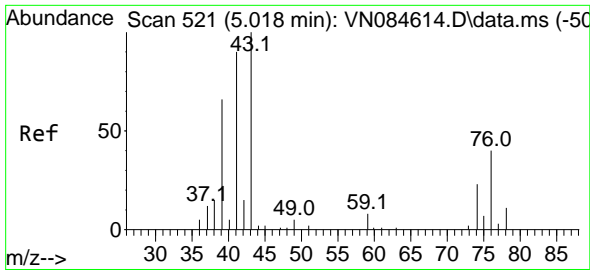
Tgt Ion	Resp	Lower	Upper
94	100		
96	0.0	72.7	109.1#



#6  
 Chloroethane  
 Concen: 0.564 ug/l  
 RT: 3.059 min Scan# 188  
 Delta R.T. -0.000 min  
 Lab File: VN084873.D  
 Acq: 15 Nov 2024 16:48

Tgt Ion	Resp	Lower	Upper
64	100		
66	0.0	22.1	33.1#

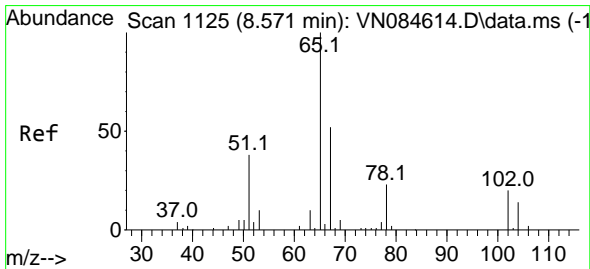
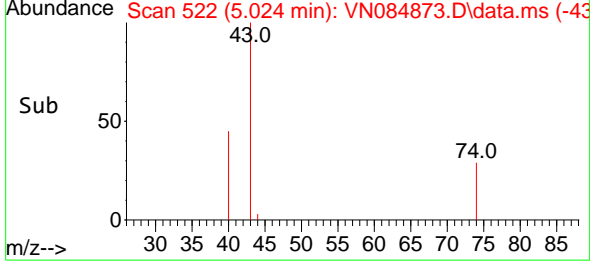
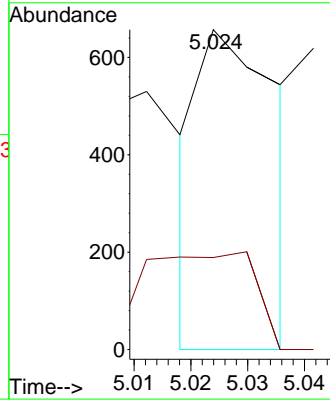
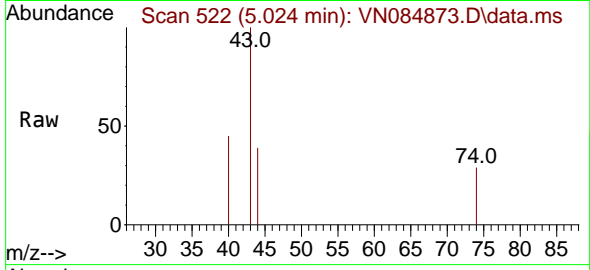




#12  
 Methyl Acetate  
 Concen: 0.271 ug/l  
 RT: 5.024 min Scan# 51  
 Delta R.T. 0.006 min  
 Lab File: VN084873.D  
 Acq: 15 Nov 2024 16:48

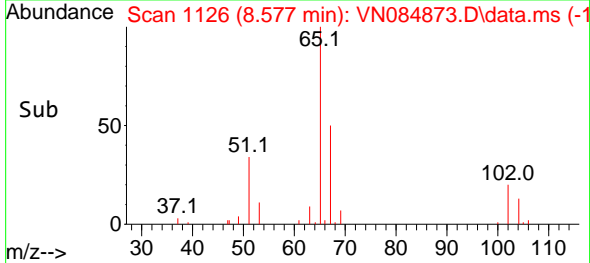
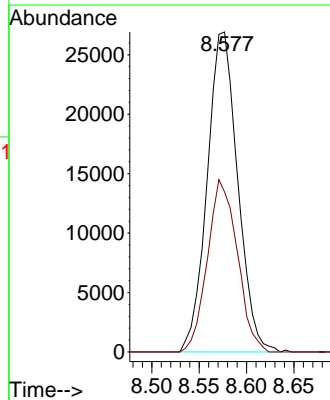
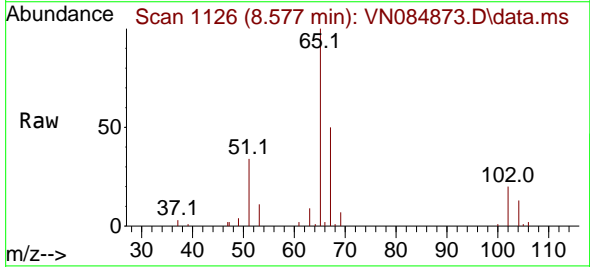
Instrument :  
 MSVOA\_N  
 ClientSampleId :  
 TT-072-IDWGW-20241113

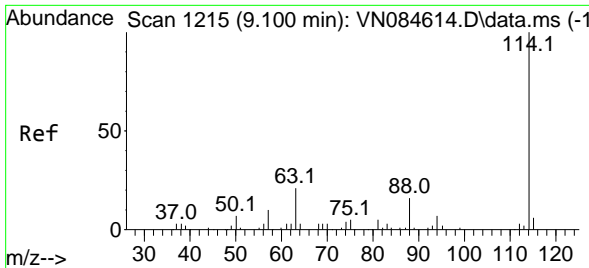
Tgt Ion: 43 Resp: 629  
 Ion Ratio Lower Upper  
 43 100  
 74 57.1 19.0 28.4#



#27  
 1,2-Dichloroethane-d4  
 Concen: 29.339 ug/l  
 RT: 8.577 min Scan# 1126  
 Delta R.T. 0.006 min  
 Lab File: VN084873.D  
 Acq: 15 Nov 2024 16:48

Tgt Ion: 65 Resp: 60280  
 Ion Ratio Lower Upper  
 65 100  
 67 52.7 40.7 61.1



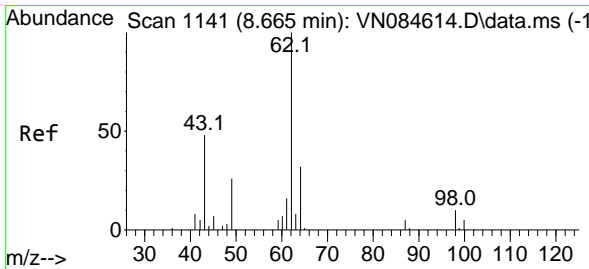
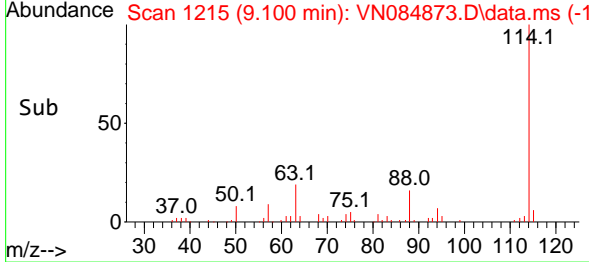
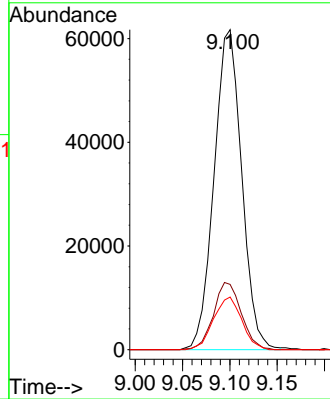
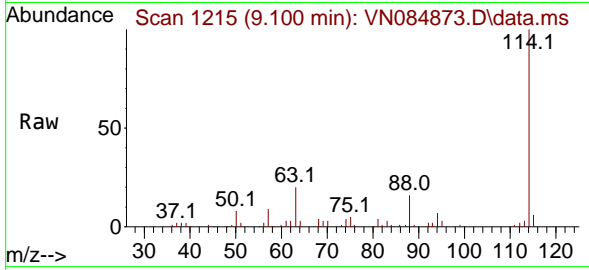


#28  
 1,4-Difluorobenzene  
 Concen: 30.000 ug/l  
 RT: 9.100 min Scan# 11  
 Delta R.T. -0.000 min  
 Lab File: VN084873.D  
 Acq: 15 Nov 2024 16:48

Instrument : MSVOA\_N  
 ClientSampleId : TT-072-IDWGW-20241113

Tgt Ion:114 Resp: 125147

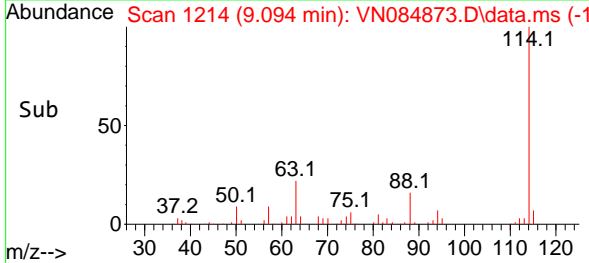
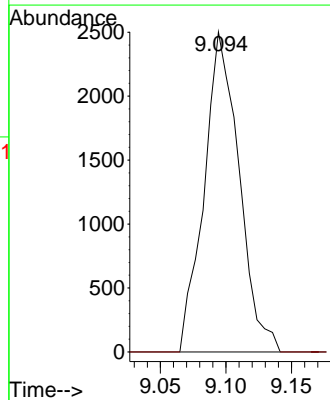
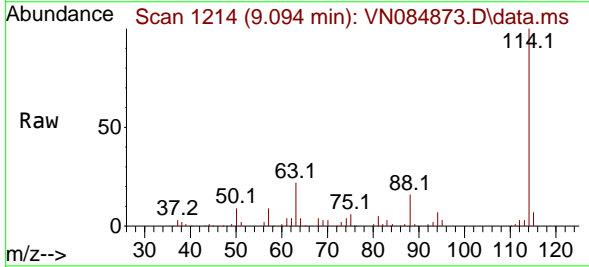
Ion	Ratio	Lower	Upper
114	100		
63	21.1	16.8	25.2
88	16.8	12.9	19.3

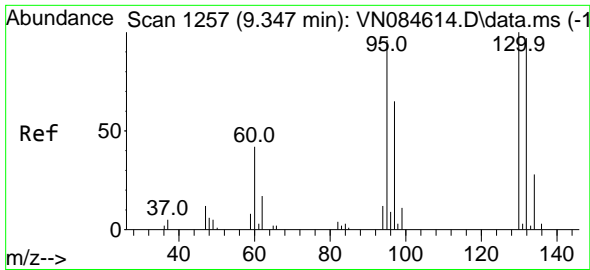


#36  
 1,2-Dichloroethane  
 Concen: 2.242 ug/l  
 RT: 9.094 min Scan# 1214  
 Delta R.T. 0.429 min  
 Lab File: VN084873.D  
 Acq: 15 Nov 2024 16:48

Tgt Ion: 62 Resp: 4646

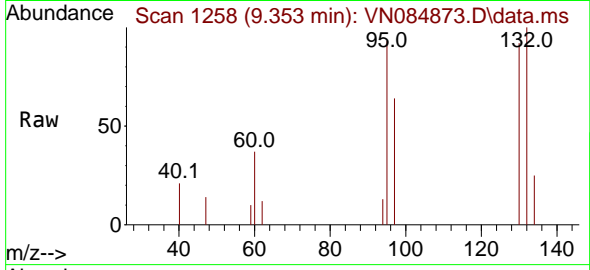
Ion	Ratio	Lower	Upper
62	100		
98	0.0	7.8	11.6#



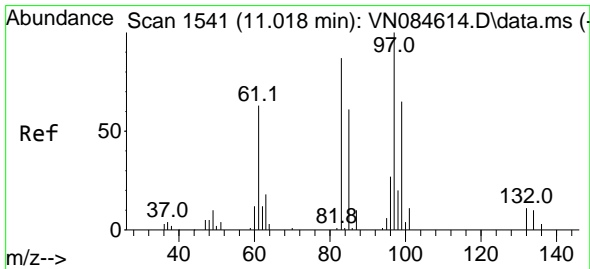
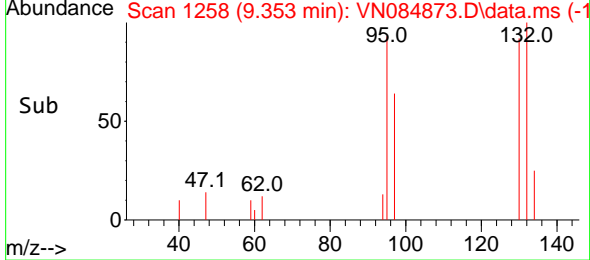
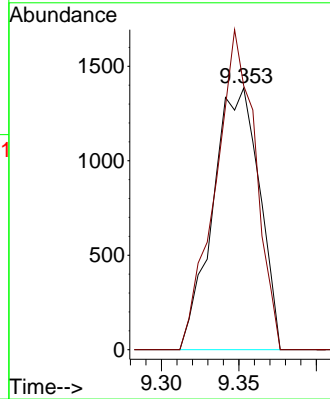


#37  
 Trichloroethene  
 Concen: 2.065 ug/l  
 RT: 9.353 min Scan# 1465  
 Delta R.T. 0.006 min  
 Lab File: VN084873.D  
 Acq: 15 Nov 2024 16:48

Instrument : MSVOA\_N  
 ClientSampleId : TT-072-IDWGW-20241113

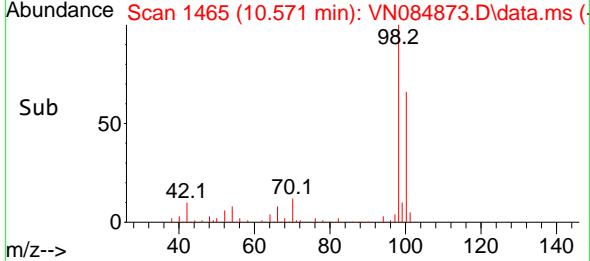
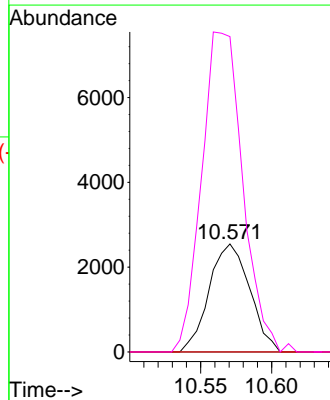
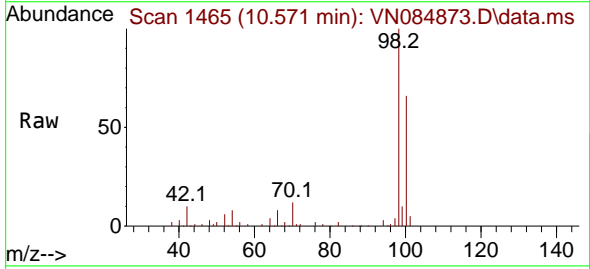


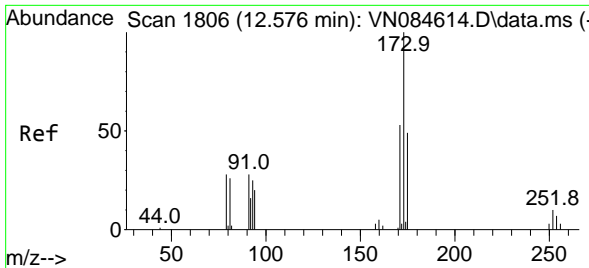
Tgt Ion:130 Resp: 2902  
 Ion Ratio Lower Upper  
 130 100  
 95 100.9 76.6 115.0



#50  
 1,1,2-Trichloroethane  
 Concen: 3.602 ug/l  
 RT: 10.571 min Scan# 1465  
 Delta R.T. -0.447 min  
 Lab File: VN084873.D  
 Acq: 15 Nov 2024 16:48

Tgt Ion: 97 Resp: 5070  
 Ion Ratio Lower Upper  
 97 100  
 83 0.0 69.8 104.8#  
 85 0.0 48.6 73.0#  
 99 291.9 52.9 79.3#



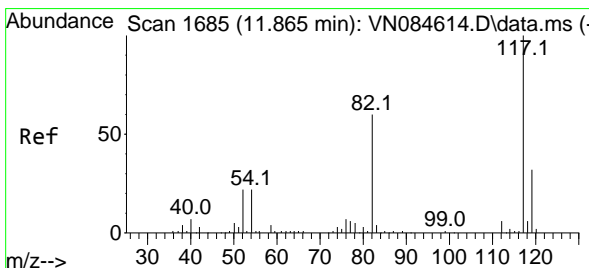
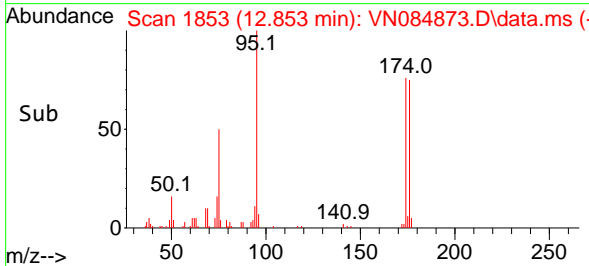
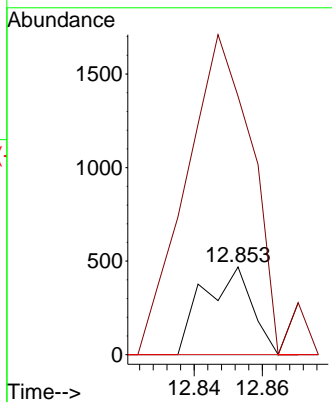
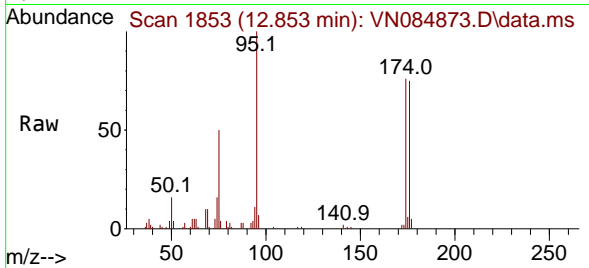


#56  
 Bromoform  
 Concen: 0.420 ug/l  
 RT: 12.853 min Scan# 1806  
 Delta R.T. 0.276 min  
 Lab File: VN084873.D  
 Acq: 15 Nov 2024 16:48

Instrument : MSVOA\_N  
 ClientSampleId : TT-072-IDWGW-20241113

Tgt Ion:173 Resp: 464

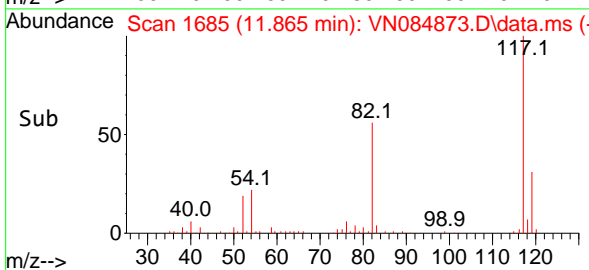
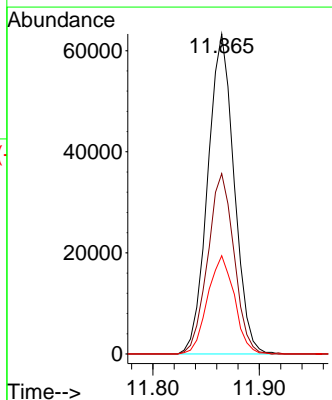
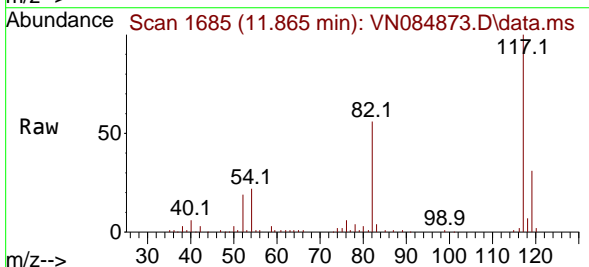
Ion	Ratio	Lower	Upper
173	100		
175	490.1	39.4	59.2#
254	0.0	6.4	9.6#



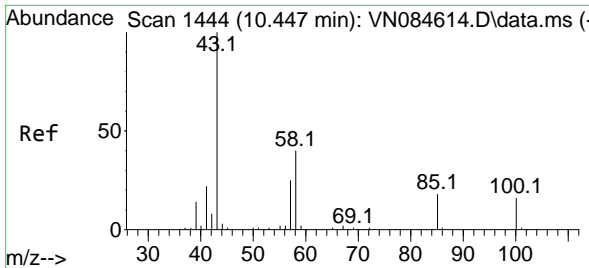
#57  
 Chlorobenzene-d5  
 Concen: 30.000 ug/l  
 RT: 11.865 min Scan# 1685  
 Delta R.T. -0.000 min  
 Lab File: VN084873.D  
 Acq: 15 Nov 2024 16:48

Tgt Ion:117 Resp: 108897

Ion	Ratio	Lower	Upper
117	100		
82	56.2	45.5	68.3
119	31.1	25.3	37.9



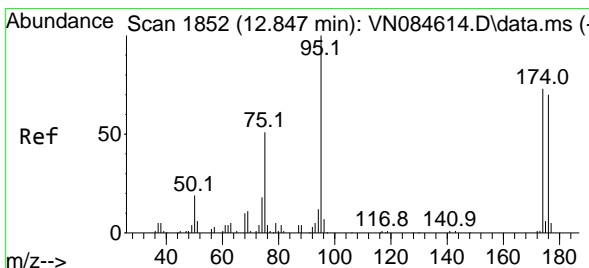
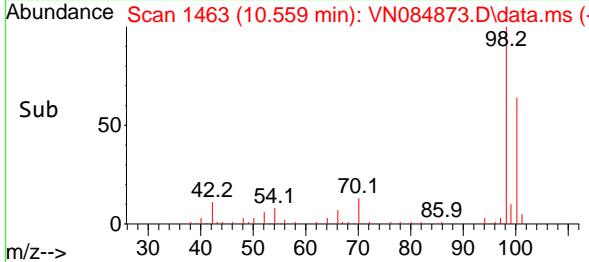
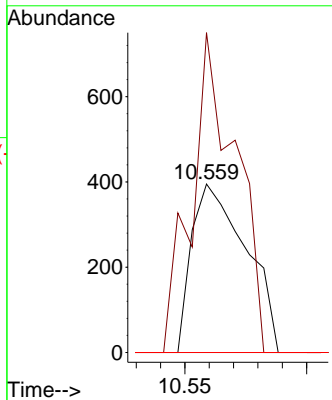
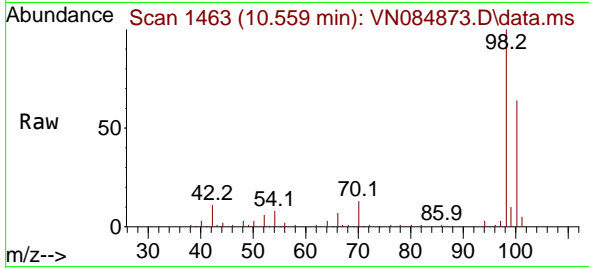




#58  
 4-Methyl-2-Pentanone  
 Concen: 0.357 ug/l  
 RT: 10.559 min Scan# 14  
 Delta R.T. 0.112 min  
 Lab File: VN084873.D  
 Acq: 15 Nov 2024 16:48

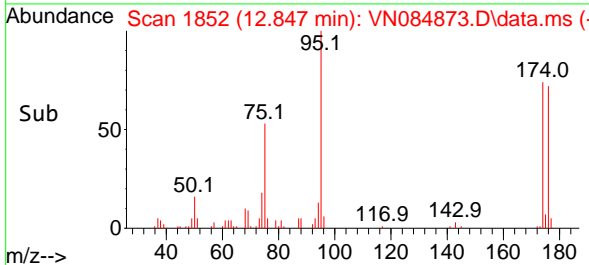
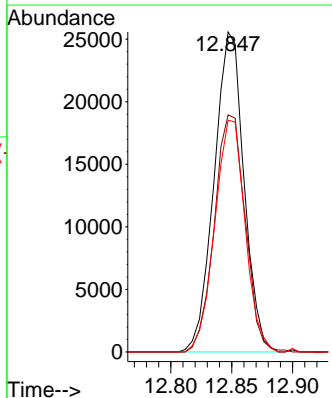
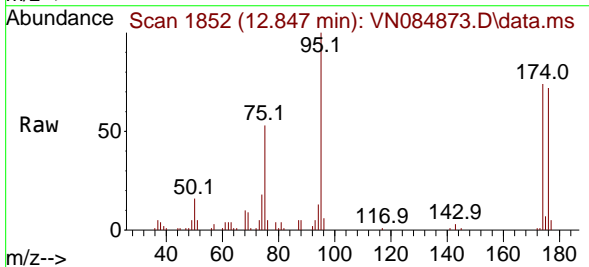
Instrument : MSVOA\_N  
 ClientSampleId : TT-072-IDWGW-20241113

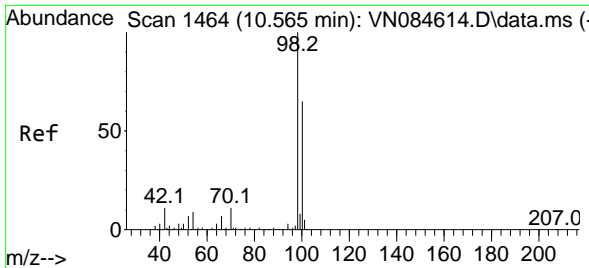
Tgt Ion	Resp	Lower	Upper
43	100		
58	103.3	31.2	46.8#
85	0.0	14.9	22.3#



#60  
 4-Bromofluorobenzene  
 Concen: 23.258 ug/l  
 RT: 12.847 min Scan# 1852  
 Delta R.T. -0.000 min  
 Lab File: VN084873.D  
 Acq: 15 Nov 2024 16:48

Tgt Ion	Resp	Lower	Upper
95	100		
174	76.5	59.6	89.4
176	73.7	58.6	88.0

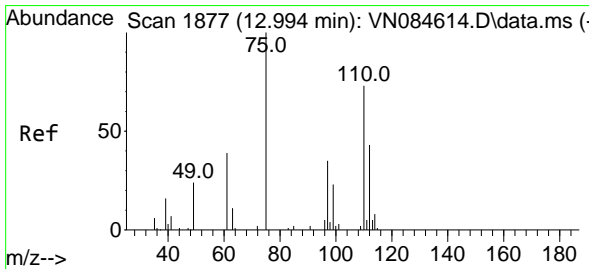
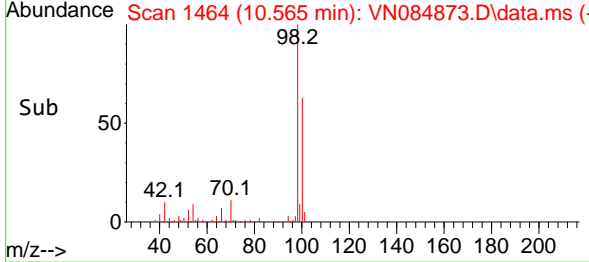
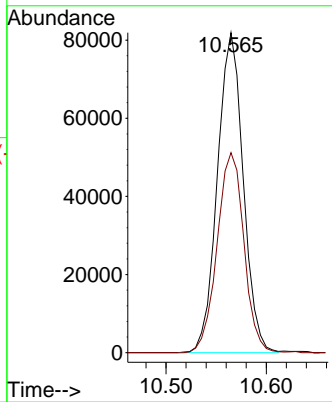
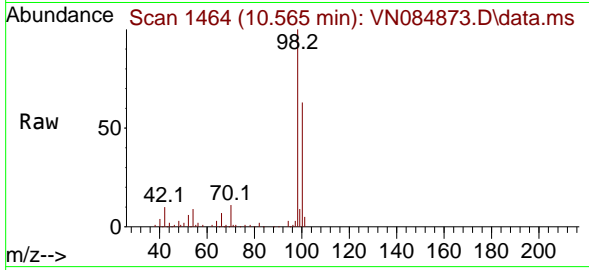




#63  
 Toluene-d8  
 Concen: 28.424 ug/l  
 RT: 10.565 min Scan# 1465  
 Delta R.T. -0.000 min  
 Lab File: VN084873.D  
 Acq: 15 Nov 2024 16:48

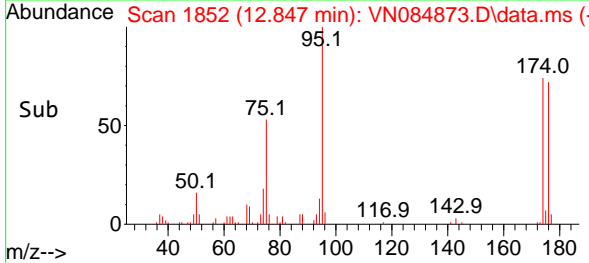
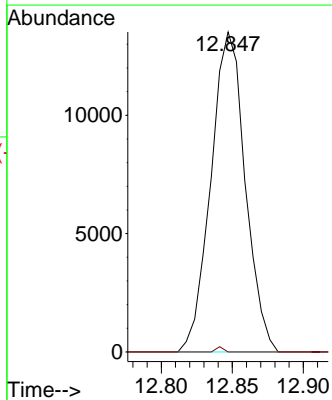
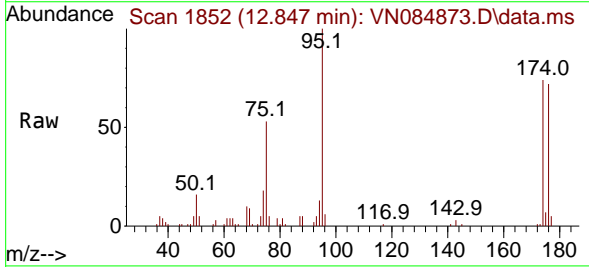
Instrument : MSVOA\_N  
 ClientSampleId : TT-072-IDWGW-20241113

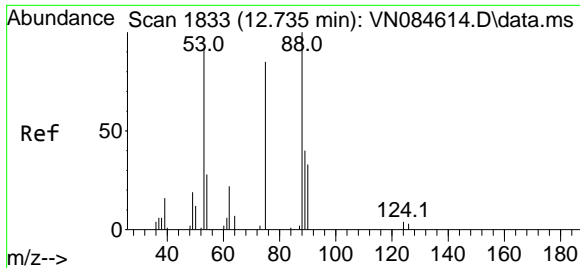
Tgt Ion: 98 Resp: 146534  
 Ion Ratio Lower Upper  
 98 100  
 100 64.8 52.2 78.2



#72  
 1,2,3-Trichloropropane  
 Concen: 13.739 ug/l  
 RT: 12.847 min Scan# 1852  
 Delta R.T. -0.147 min  
 Lab File: VN084873.D  
 Acq: 15 Nov 2024 16:48

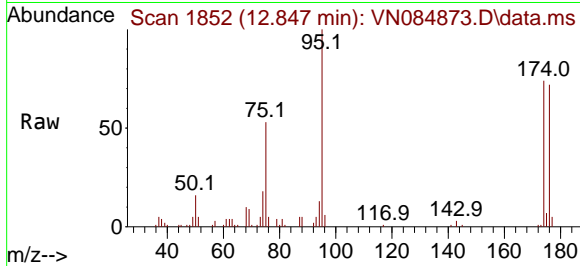
Tgt Ion: 75 Resp: 22739  
 Ion Ratio Lower Upper  
 75 100  
 77 0.0 0.0 358.4





#77  
 t-1,4-Dichloro-2-butene  
 Concen: 33.499 ug/l  
 RT: 12.847 min Scan# 18  
 Delta R.T. 0.112 min  
 Lab File: VN084873.D  
 Acq: 15 Nov 2024 16:48

Instrument : MSVOA\_N  
 ClientSampleId : TT-072-IDWGW-20241113



Tgt Ion: 75 Resp: 22739

Ion	Ratio	Lower	Upper
75	100		
53	0.0	52.4	157.2#
89	0.0	26.0	78.0#

