

Data Path : Z:\voasrv\HPCHEM1\MSVOA\_N\Data\VN111524\  
 Data File : VN084876.D  
 Acq On : 15 Nov 2024 18:00  
 Operator : JC\MD  
 Sample : P4844-01  
 Misc : 5.0mL/MSVOA\_N/WATER  
 ALS Vial : 12 Sample Multiplier: 1

Instrument :  
 MSVOA\_N  
 ClientSampleId :

Quant Time: Nov 15 22:28:21 2024  
 Quant Method : Z:\voasrv\HPCHEM1\MSVOA\_N\methods\624N103124W.M  
 Quant Title : METHOD 624 VOLATILE ORGANIC ANALYSIS  
 QLast Update : Fri Nov 01 02:38:04 2024  
 Response via : Initial Calibration

Compound	R.T.	QIon	Response	Conc	Units	Dev(Min)
-----						
Internal Standards						
1) Bromochloromethane	7.812	128	24378	30.000	ug/l	0.00
28) 1,4-Difluorobenzene	9.094	114	131256	30.000	ug/l	0.00
57) Chlorobenzene-d5	11.865	117	127289	30.000	ug/l	0.00
System Monitoring Compounds						
27) 1,2-Dichloroethane-d4	8.576	65	60380	30.808	ug/l	0.00
Spiked Amount	30.000	Range 91 - 110	Recovery	=	102.700%	
60) 4-Bromofluorobenzene	12.847	95	60280	27.504	ug/l	0.00
Spiked Amount	30.000	Range 63 - 112	Recovery	=	91.667%	
63) Toluene-d8	10.565	98	161151	26.743	ug/l	0.00
Spiked Amount	30.000	Range 91 - 112	Recovery	=	89.133%#	
Target Compounds						
						Qvalue
3) Chloromethane	2.359	50	474	0.278	ug/l #	43
4) Vinyl Chloride	2.506	62	606	0.382	ug/l #	46
5) Bromomethane	2.889	94	200	0.249	ug/l #	4
8) Diethyl Ether	3.947	74	3167	3.449	ug/l	78
12) Methyl Acetate	5.024	43	3054	1.379	ug/l #	77
14) Acrylonitrile	5.618	53	156	0.215	ug/l #	17
15) Acetone	4.430	58	13864	74.479	ug/l	91
16) Carbon Disulfide	4.689	76	7832	1.874	ug/l	97
22) cis-1,2-Dichloroethene	7.488	96	1370	0.771	ug/l #	1
23) tert-Butyl Alcohol	5.541	59	3022992	11952.402	ug/l #	100
24) Methyl tert-Butyl Ether	5.794	73	10797	2.350	ug/l #	76
26) Cyclohexane	8.659	56	580	0.261	ug/l #	9
30) 2-Butanone	7.447	43	82290	90.235	ug/l #	78
34) Benzene	8.600	78	27262	4.172	ug/l #	85
35) Methacrylonitrile	7.835	41	396725	367.051	ug/l #	45
43) Ethyl Acetate	7.553	43	7637	3.985	ug/l #	1
44) Isopropyl Acetate	8.659	43	10004	2.578	ug/l #	50
45) 1,4-Dioxane	9.700	88	3150	121.599	ug/l #	83
50) 1,1,2-Trichloroethane	10.912	97	671	0.455	ug/l #	57
55) 2-Chloroethyl vinyl ether	10.629	63	5500	4.930	ug/l #	1
58) 4-Methyl-2-Pentanone	10.435	43	10552	5.255	ug/l #	61
59) 2-Hexanone	11.170	43	115878	78.803	ug/l #	34
62) Toluene	10.629	91	80765	11.140	ug/l	98
64) Chlorobenzene	11.888	112	6131	1.401	ug/l #	88
66) Ethyl Benzene	11.964	91	80469	10.561	ug/l	97
67) m/p-Xylenes	12.065	106	32906	11.281	ug/l	100
68) o-Xylene	12.394	106	18066	6.420	ug/l	99
69) Styrene	12.412	104	4332	0.918	ug/l #	31
70) Isopropylbenzene	12.694	105	6074	0.869	ug/l	97
74) n-propylbenzene	13.035	91	4142	0.507	ug/l	92
75) 2-Chlorotoluene	13.123	91	1134	0.213	ug/l	96
76) 1,3,5-Trimethylbenzene	13.170	105	6111	1.023	ug/l	92
77) t-1,4-Dichloro-2-butene	12.417	75	207	0.261	ug/l	71
79) tert-butylbenzene	13.664	119	1287	0.261	ug/l	90
80) 1,2,4-Trimethylbenzene	13.482	105	21472	3.564	ug/l	98
82) p-Isopropyltoluene	13.729	119	50130	8.766	ug/l	96
83) 1,3-Dichlorobenzene	13.811	146	7992	2.397	ug/l	95
84) 1,4-Dichlorobenzene	13.811	146	7992	2.426	ug/l	92
85) n-Butylbenzene	14.247	91	4932	1.027	ug/l	56

Data Path : Z:\voasrv\HPCHEM1\MSVOA\_N\Data\VN111524\  
Data File : VN084876.D  
Acq On : 15 Nov 2024 18:00  
Operator : JC\MD  
Sample : P4844-01  
Misc : 5.0mL/MSVOA\_N/WATER  
ALS Vial : 12 Sample Multiplier: 1

Instrument :  
MSVOA\_N  
ClientSampleId :

Quant Time: Nov 15 22:28:21 2024  
Quant Method : Z:\voasrv\HPCHEM1\MSVOA\_N\methods\624N103124W.M  
Quant Title : METHOD 624 VOLATILE ORGANIC ANALYSIS  
QLast Update : Fri Nov 01 02:38:04 2024  
Response via : Initial Calibration

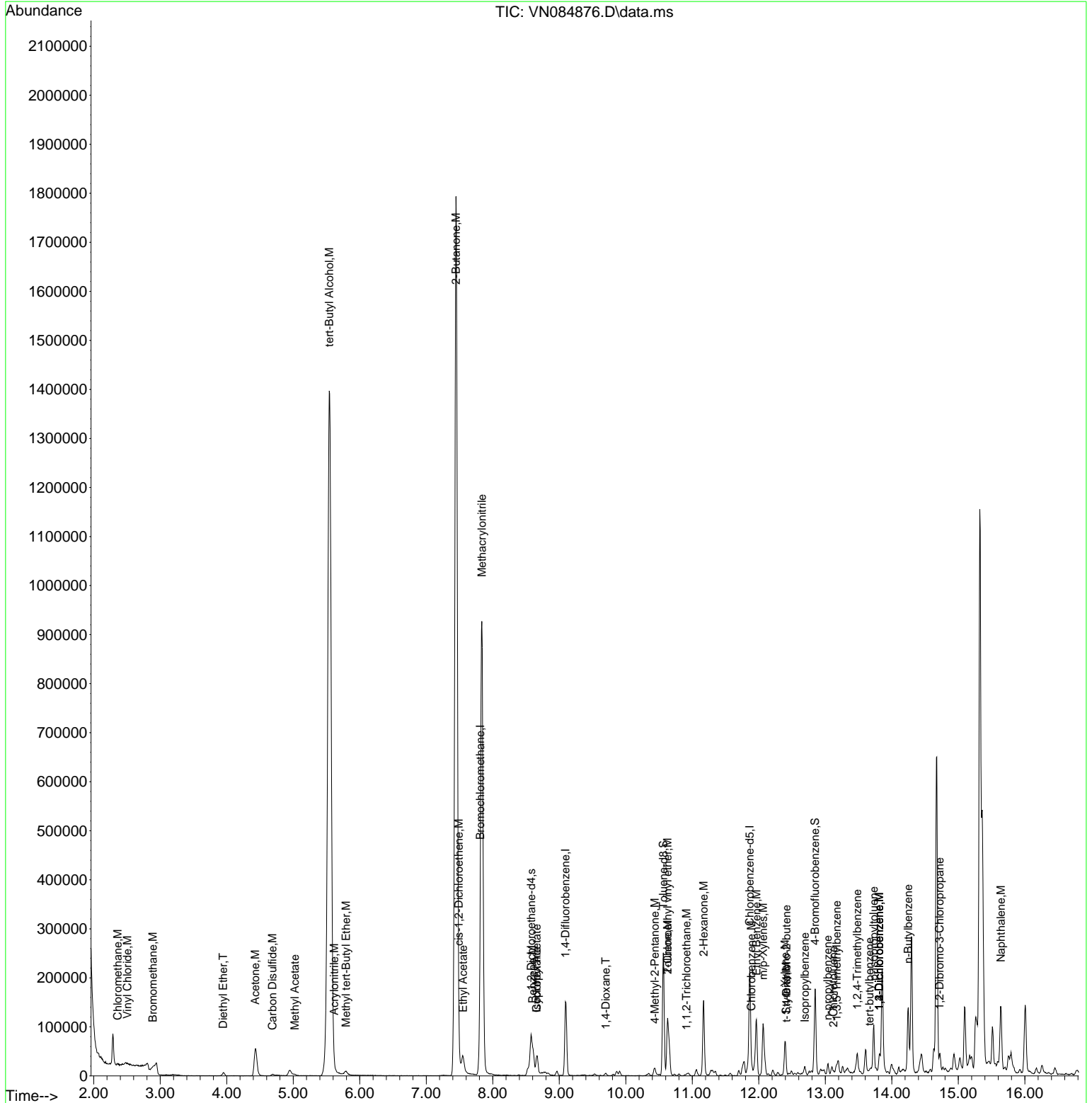
Compound	R.T.	QIon	Response	Conc	Units	Dev(Min)
87) 1,2-Dichlorobenzene	13.811	146	7992	2.432	ug/l	95
88) 1,2-Dibromo-3-Chloropr...	14.717	75	110	0.252	ug/l #	6
91) Naphthalene	15.641	128	123830	24.238	ug/l	100

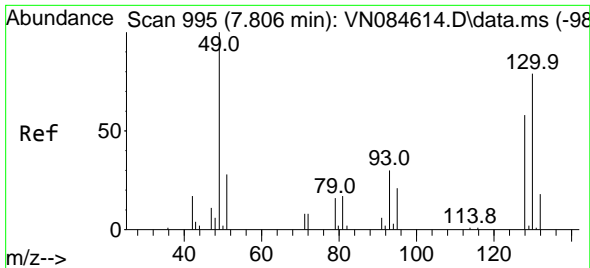
(#) = qualifier out of range (m) = manual integration (+) = signals summed

Data Path : Z:\voasrv\HPCHEM1\MSVOA\_N\Data\VN111524\  
 Data File : VN084876.D  
 Acq On : 15 Nov 2024 18:00  
 Operator : JC\MD  
 Sample : P4844-01  
 Misc : 5.0mL/MSVOA\_N/WATER  
 ALS Vial : 12 Sample Multiplier: 1

Instrument :  
 MSVOA\_N  
 ClientSampleId :

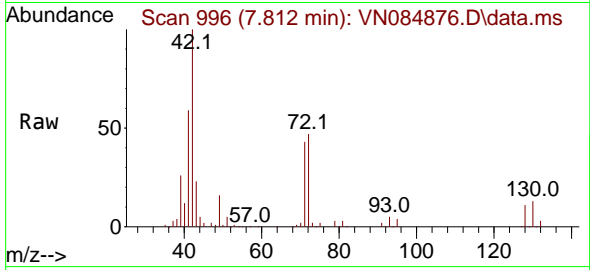
Quant Time: Nov 15 22:28:21 2024  
 Quant Method : Z:\voasrv\HPCHEM1\MSVOA\_N\methods\624N103124W.M  
 Quant Title : METHOD 624 VOLATILE ORGANIC ANALYSIS  
 QLast Update : Fri Nov 01 02:38:04 2024  
 Response via : Initial Calibration





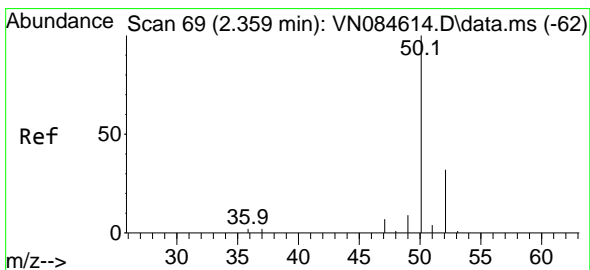
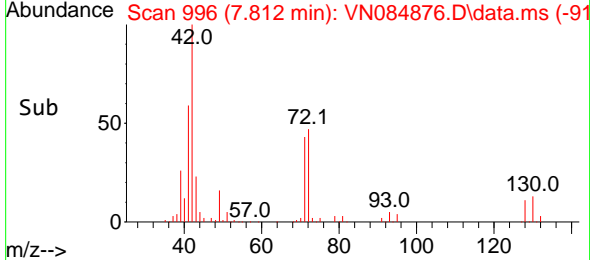
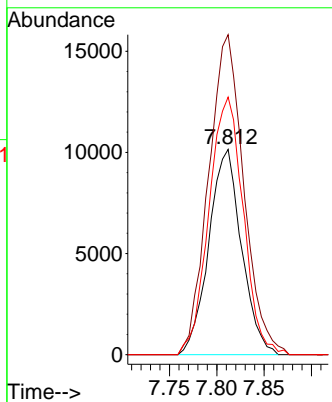
#1  
 Bromochloromethane  
 Concen: 30.000 ug/l  
 RT: 7.812 min Scan# 91  
 Delta R.T. 0.006 min  
 Lab File: VN084876.D  
 Acq: 15 Nov 2024 18:00

Instrument :  
 MSVOA\_N  
 ClientSampleId :



Tgt Ion:128 Resp: 24378

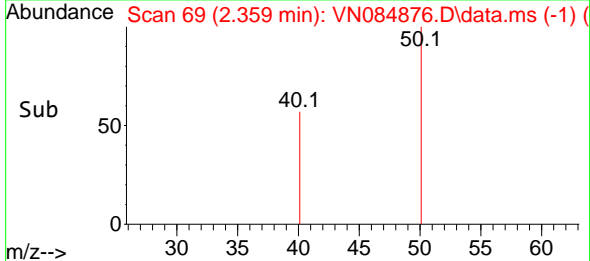
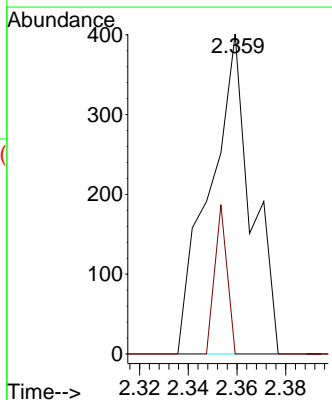
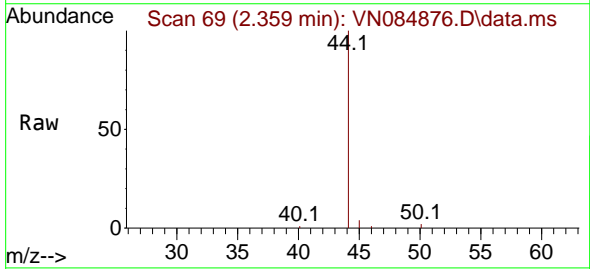
Ion	Ratio	Lower	Upper
128	100		
49	167.7	0.0	427.0
130	131.9	0.0	322.2

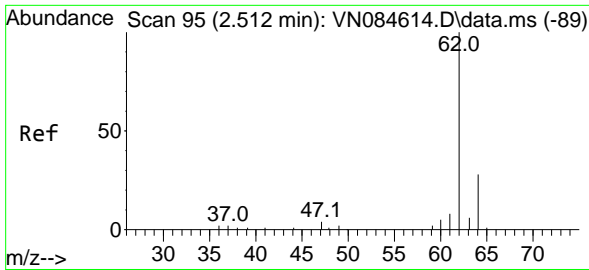


#3  
 Chloromethane  
 Concen: 0.278 ug/l  
 RT: 2.359 min Scan# 69  
 Delta R.T. -0.000 min  
 Lab File: VN084876.D  
 Acq: 15 Nov 2024 18:00

Tgt Ion: 50 Resp: 474

Ion	Ratio	Lower	Upper
50	100		
52	0.0	25.5	38.3#

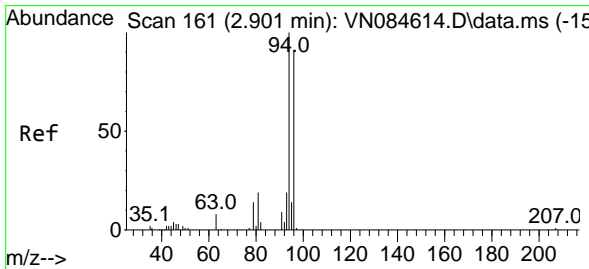
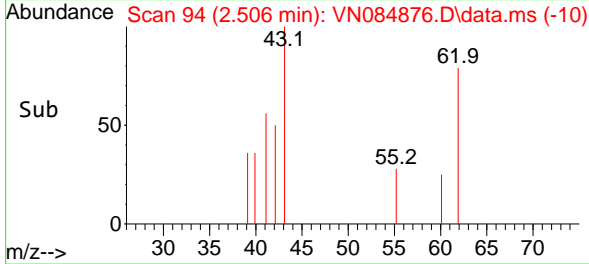
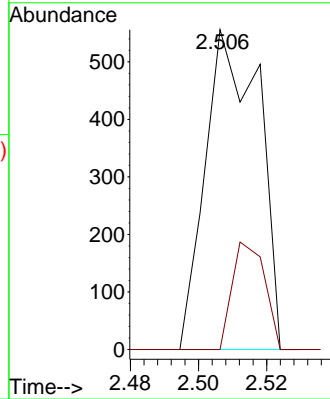
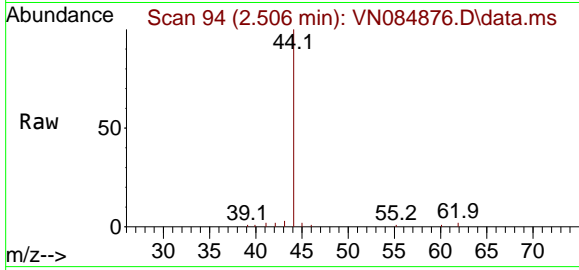




#4  
 Vinyl Chloride  
 Concen: 0.382 ug/l  
 RT: 2.506 min Scan# 94  
 Delta R.T. -0.006 min  
 Lab File: VN084876.D  
 Acq: 15 Nov 2024 18:00

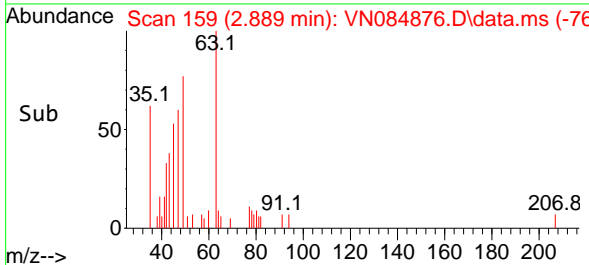
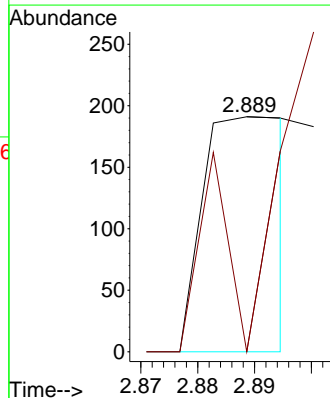
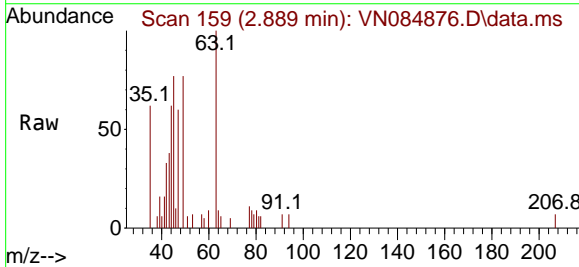
Instrument :  
 MSVOA\_N  
 ClientSampleId :

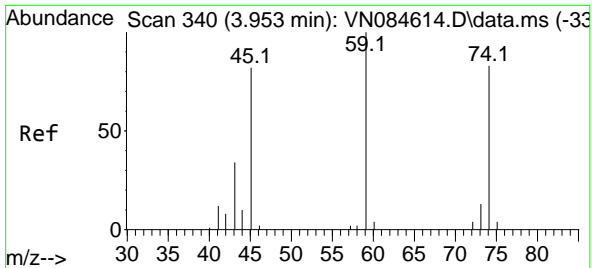
Tgt Ion: 62 Resp: 606  
 Ion Ratio Lower Upper  
 62 100  
 64 0.0 23.1 34.7#



#5  
 Bromomethane  
 Concen: 0.249 ug/l  
 RT: 2.889 min Scan# 159  
 Delta R.T. -0.012 min  
 Lab File: VN084876.D  
 Acq: 15 Nov 2024 18:00

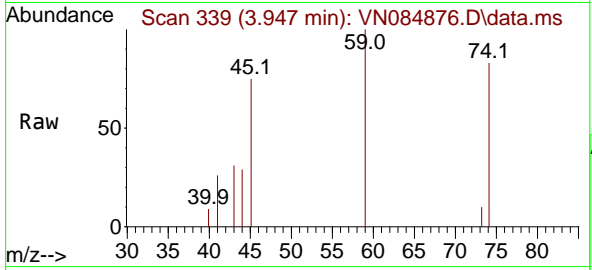
Tgt Ion: 94 Resp: 200  
 Ion Ratio Lower Upper  
 94 100  
 96 0.0 72.7 109.1#



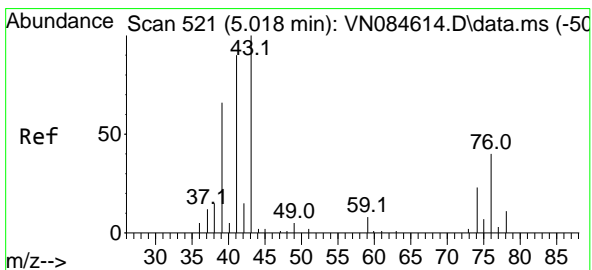
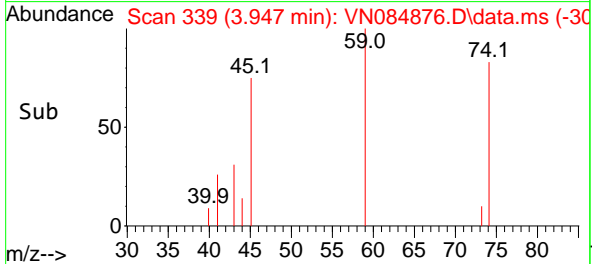
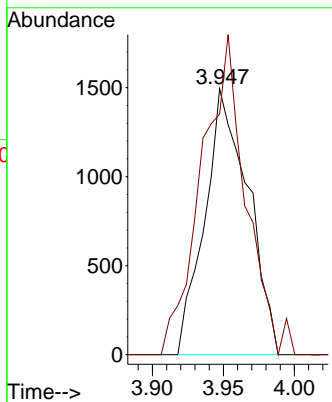


#8  
 Diethyl Ether  
 Concen: 3.449 ug/l  
 RT: 3.947 min Scan# 31  
 Delta R.T. -0.006 min  
 Lab File: VN084876.D  
 Acq: 15 Nov 2024 18:00

Instrument :  
 MSVOA\_N  
 ClientSampleId :

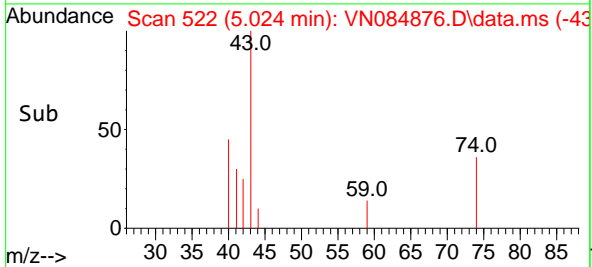
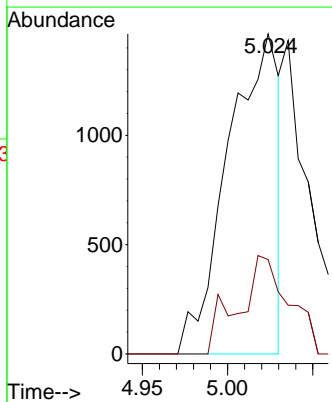
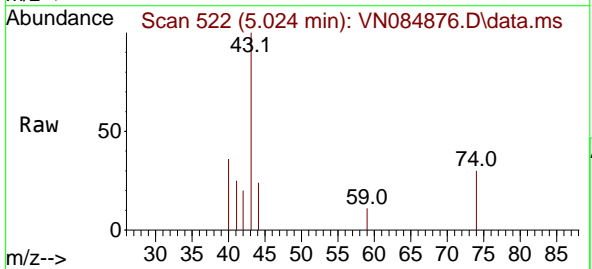


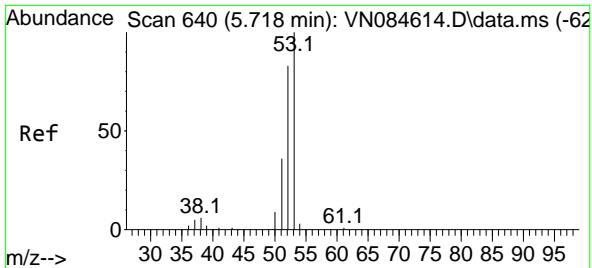
Tgt Ion: 74 Resp: 3167  
 Ion Ratio Lower Upper  
 74 100  
 45 120.8 19.8 178.4



#12  
 Methyl Acetate  
 Concen: 1.379 ug/l  
 RT: 5.024 min Scan# 522  
 Delta R.T. 0.006 min  
 Lab File: VN084876.D  
 Acq: 15 Nov 2024 18:00

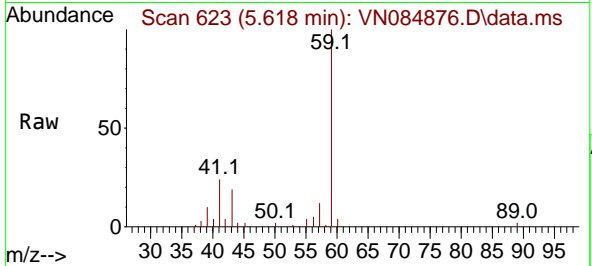
Tgt Ion: 43 Resp: 3054  
 Ion Ratio Lower Upper  
 43 100  
 74 35.0 19.0 28.4#





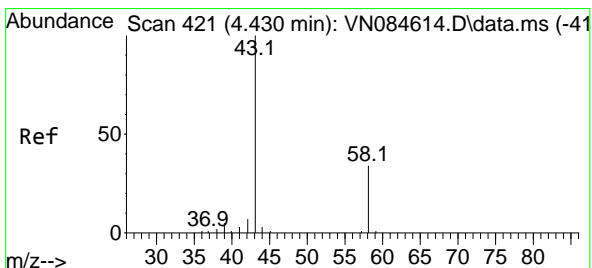
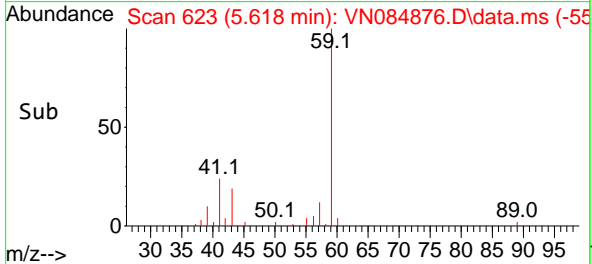
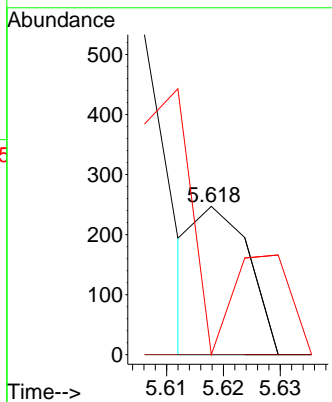
#14  
 Acrylonitrile  
 Concen: 0.215 ug/l  
 RT: 5.618 min Scan# 61  
 Delta R.T. -0.100 min  
 Lab File: VN084876.D  
 Acq: 15 Nov 2024 18:00

Instrument :  
 MSVOA\_N  
 ClientSampleId :



Tgt Ion: 53 Resp: 156

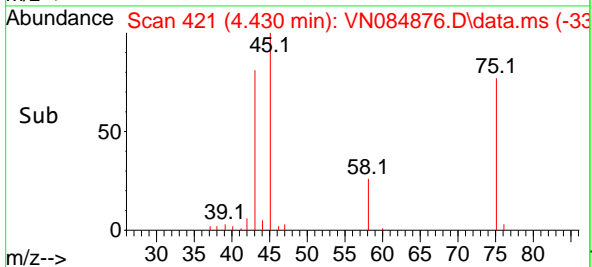
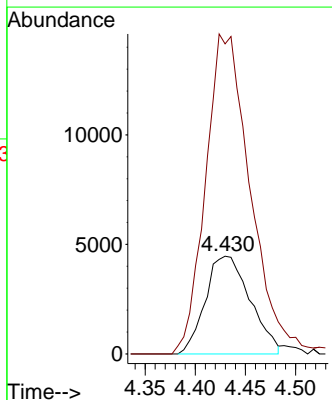
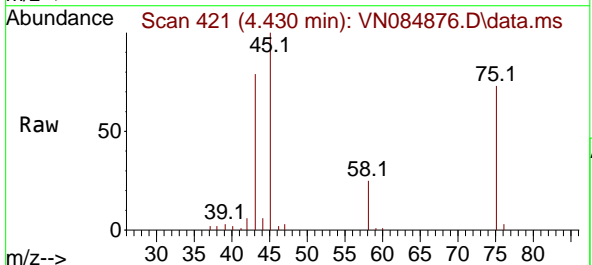
Ion	Ratio	Lower	Upper
53	100		
52	0.0	41.6	124.9#
51	73.7	18.2	54.6#

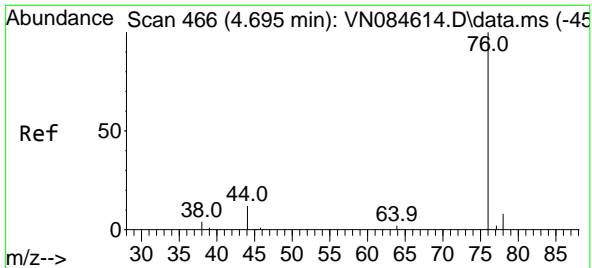


#15  
 Acetone  
 Concen: 74.479 ug/l  
 RT: 4.430 min Scan# 421  
 Delta R.T. -0.000 min  
 Lab File: VN084876.D  
 Acq: 15 Nov 2024 18:00

Tgt Ion: 58 Resp: 13864

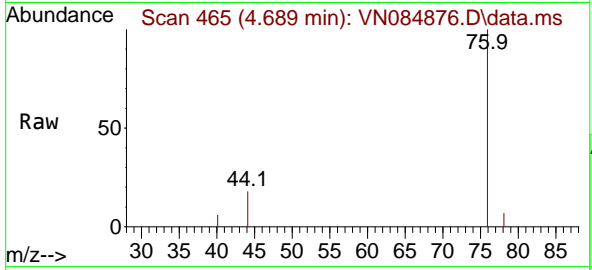
Ion	Ratio	Lower	Upper
58	100		
43	309.3	233.0	349.6



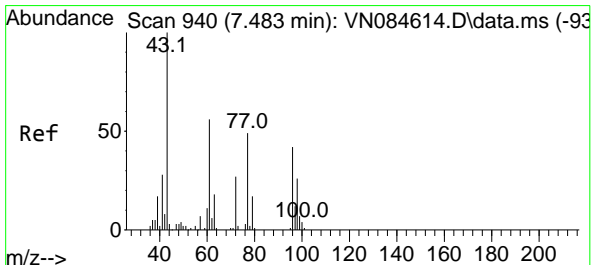
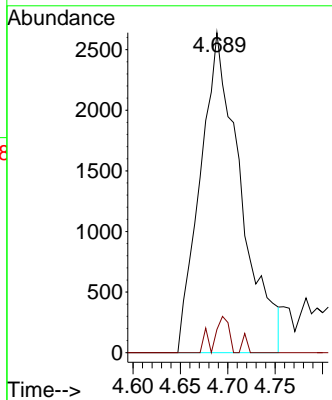
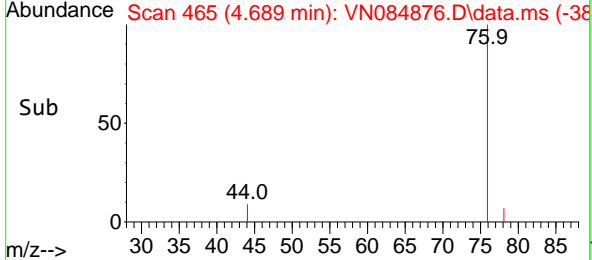


#16  
 Carbon Disulfide  
 Concen: 1.874 ug/l  
 RT: 4.689 min Scan# 408  
 Delta R.T. -0.006 min  
 Lab File: VN084876.D  
 Acq: 15 Nov 2024 18:00

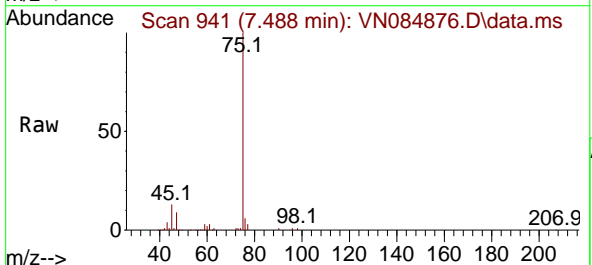
Instrument : MSVOA\_N  
 ClientSampleId :



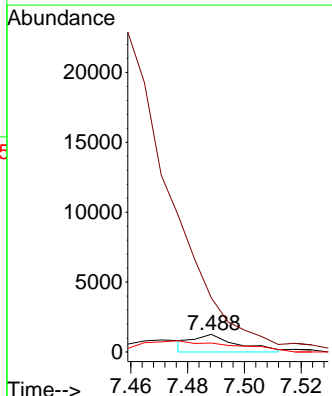
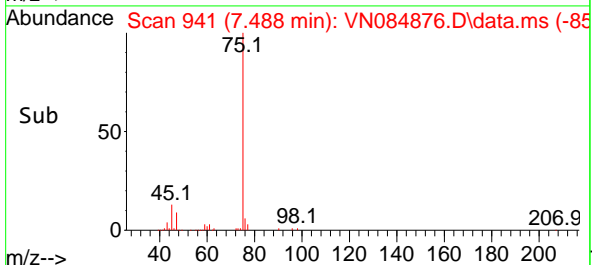
Tgt Ion: 76 Resp: 7832  
 Ion Ratio Lower Upper  
 76 100  
 78 7.2 6.6 9.8



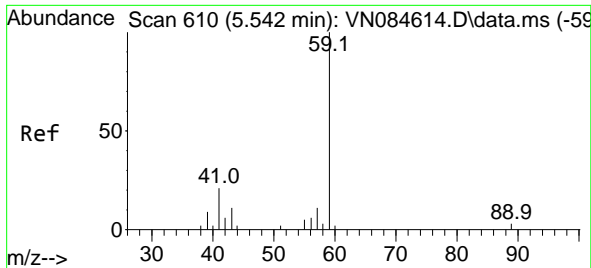
#22  
 cis-1,2-Dichloroethene  
 Concen: 0.771 ug/l  
 RT: 7.488 min Scan# 941  
 Delta R.T. 0.006 min  
 Lab File: VN084876.D  
 Acq: 15 Nov 2024 18:00



Tgt Ion: 96 Resp: 1370  
 Ion Ratio Lower Upper  
 96 100  
 61 0.0 121.8 182.8#  
 98 0.0 53.2 79.8#

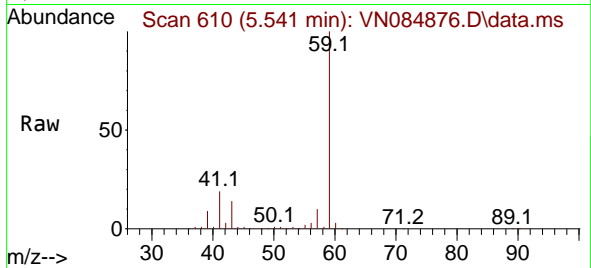




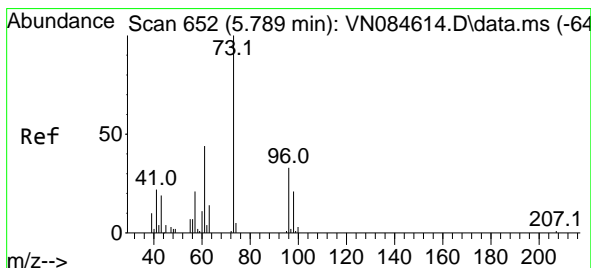
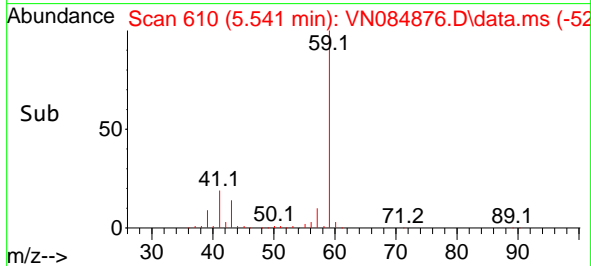
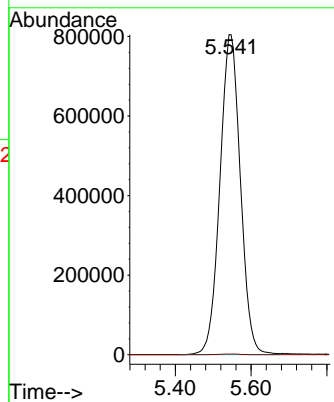


#23  
 tert-Butyl Alcohol  
 Concen: 11952.402 ug/l  
 RT: 5.541 min Scan# 610  
 Delta R.T. -0.000 min  
 Lab File: VN084876.D  
 Acq: 15 Nov 2024 18:00

Instrument :  
 MSVOA\_N  
 ClientSampleId :

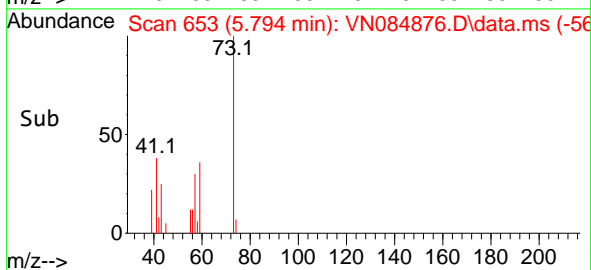
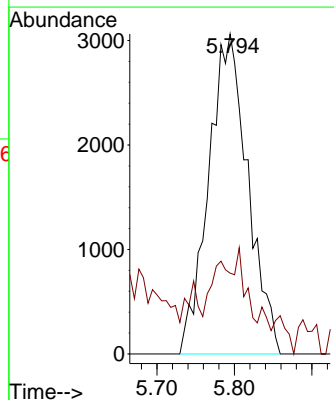
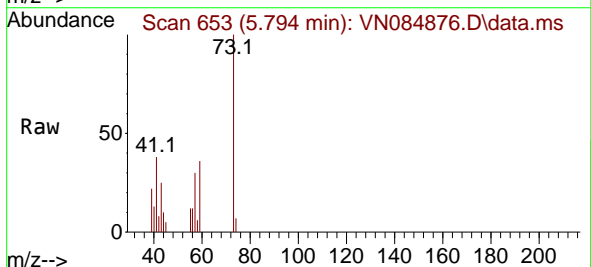


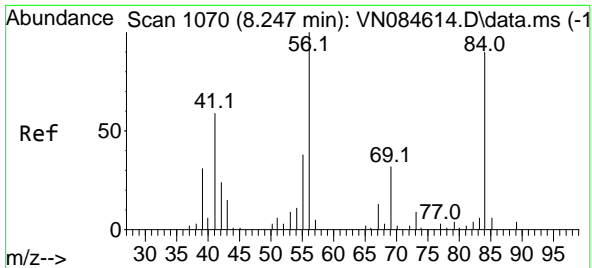
Tgt Ion: 59 Resp: 3022992  
 Ion Ratio Lower Upper  
 59 100  
 52 0.1 0.0 0.0#



#24  
 Methyl tert-Butyl Ether  
 Concen: 2.350 ug/l  
 RT: 5.794 min Scan# 653  
 Delta R.T. 0.006 min  
 Lab File: VN084876.D  
 Acq: 15 Nov 2024 18:00

Tgt Ion: 73 Resp: 10797  
 Ion Ratio Lower Upper  
 73 100  
 43 9.3 16.5 24.7#

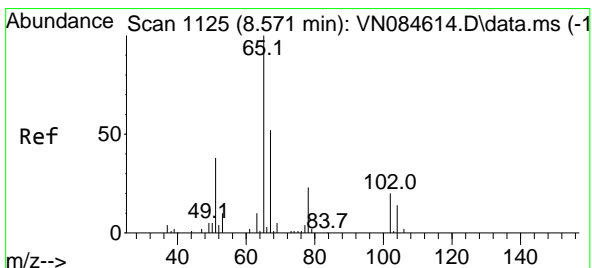
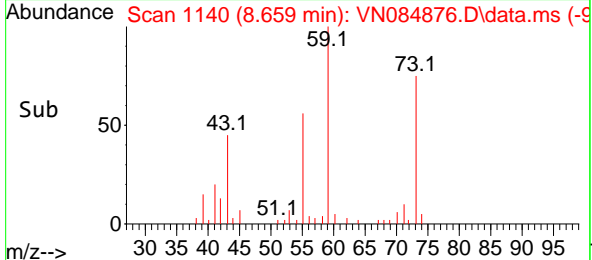
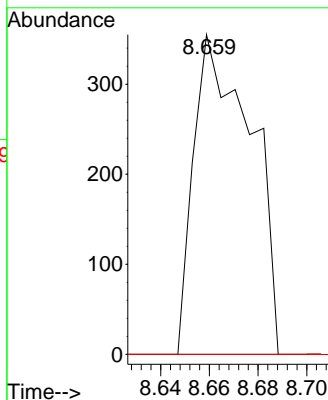
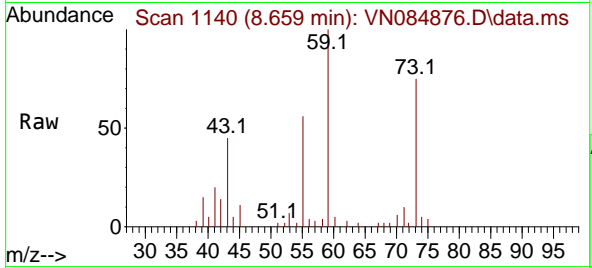




#26  
 Cyclohexane  
 Concen: 0.261 ug/l  
 RT: 8.659 min Scan# 1140  
 Delta R.T. 0.412 min  
 Lab File: VN084876.D  
 Acq: 15 Nov 2024 18:00

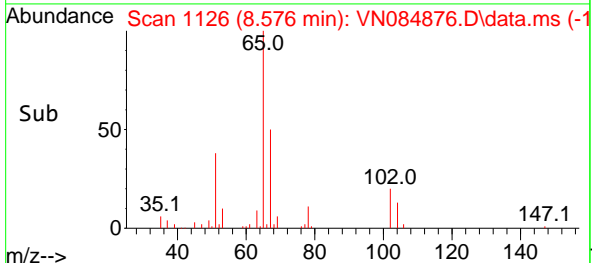
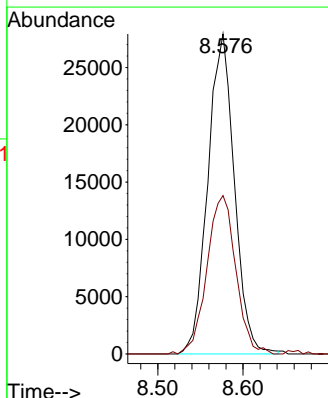
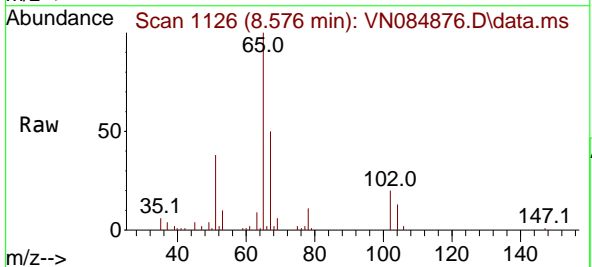
Instrument :  
 MSVOA\_N  
 ClientSampleId :

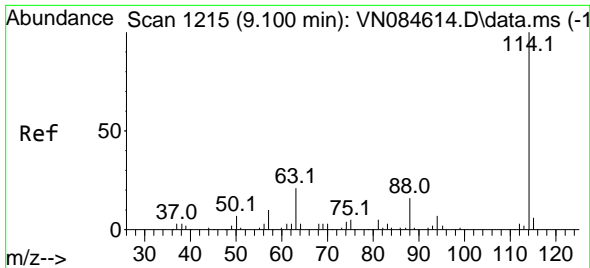
Tgt Ion	Resp	Lower	Upper
56	100		
89	0.0	3.0	4.4#
84	0.0	70.6	106.0#



#27  
 1,2-Dichloroethane-d4  
 Concen: 30.808 ug/l  
 RT: 8.576 min Scan# 1126  
 Delta R.T. 0.006 min  
 Lab File: VN084876.D  
 Acq: 15 Nov 2024 18:00

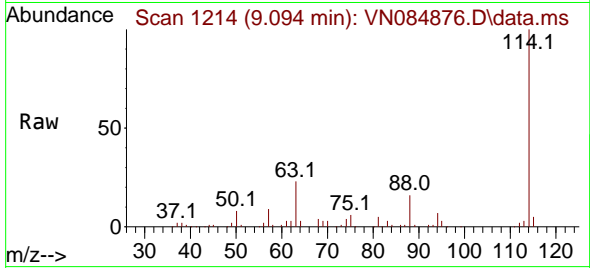
Tgt Ion	Resp	Lower	Upper
65	100		
67	53.2	40.7	61.1





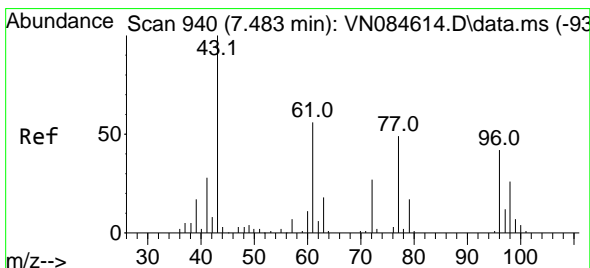
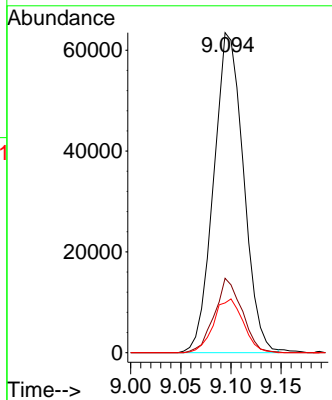
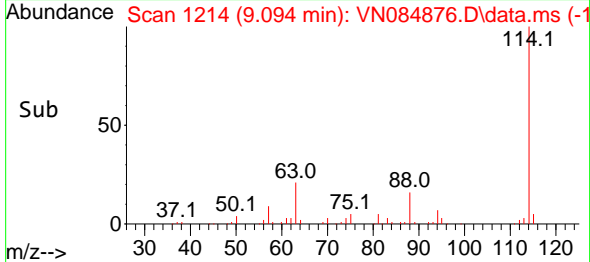
#28  
 1,4-Difluorobenzene  
 Concen: 30.000 ug/l  
 RT: 9.094 min Scan# 11  
 Delta R.T. -0.006 min  
 Lab File: VN084876.D  
 Acq: 15 Nov 2024 18:00

Instrument :  
 MSVOA\_N  
 ClientSampleId :

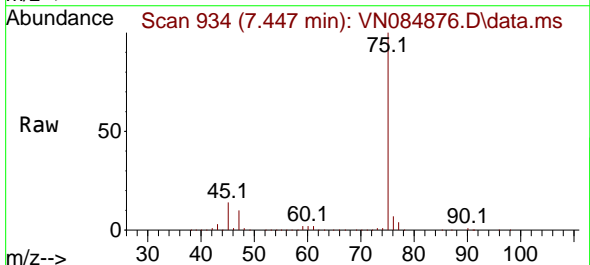


Tgt Ion:114 Resp: 131256

Ion	Ratio	Lower	Upper
114	100		
63	21.4	16.8	25.2
88	16.7	12.9	19.3

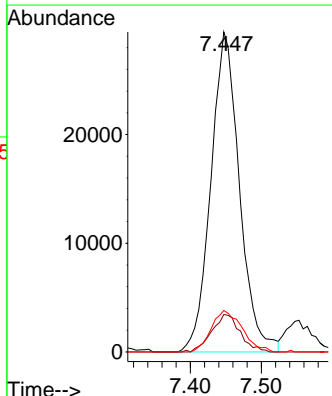
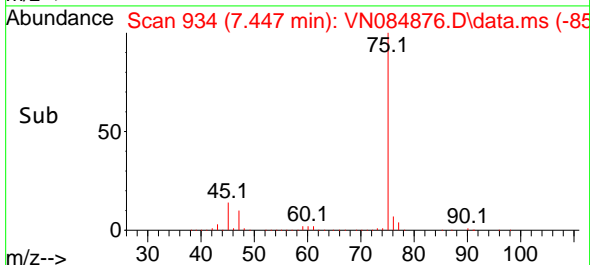


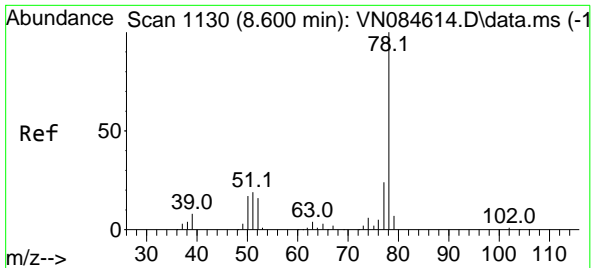
#30  
 2-Butanone  
 Concen: 90.235 ug/l  
 RT: 7.447 min Scan# 934  
 Delta R.T. -0.035 min  
 Lab File: VN084876.D  
 Acq: 15 Nov 2024 18:00



Tgt Ion: 43 Resp: 82290

Ion	Ratio	Lower	Upper
43	100		
57	11.6	6.2	9.4#
72	13.8	21.5	32.3#



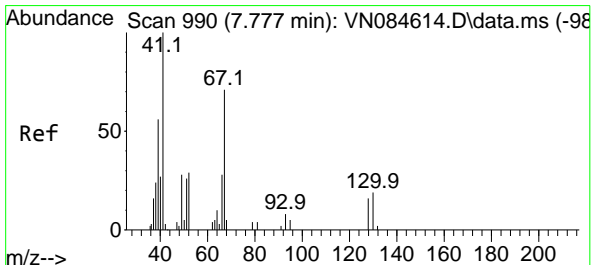
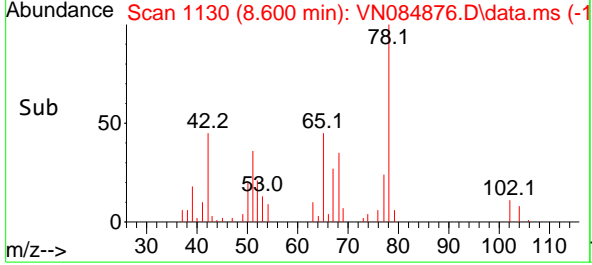
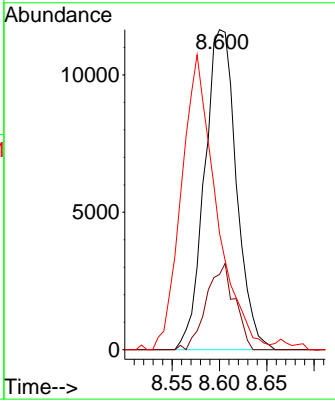
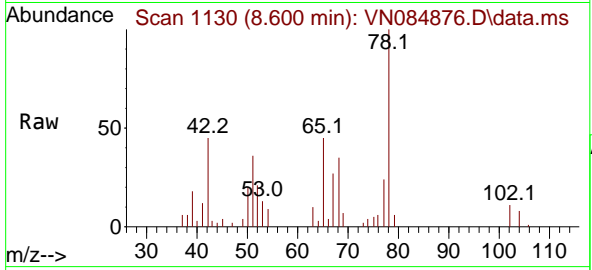


#34  
Benzene  
Concen: 4.172 ug/l  
RT: 8.600 min Scan# 1111  
Delta R.T. -0.000 min  
Lab File: VN084876.D  
Acq: 15 Nov 2024 18:00

Instrument : MSVOA\_N  
ClientSampleId :

Tgt Ion: 78 Resp: 27262

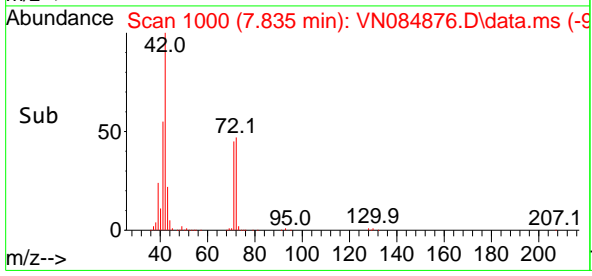
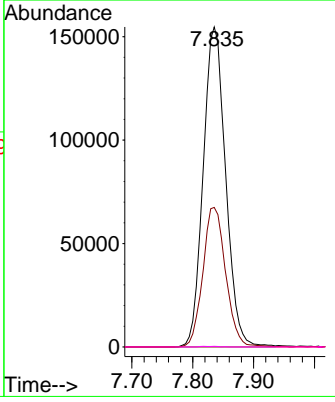
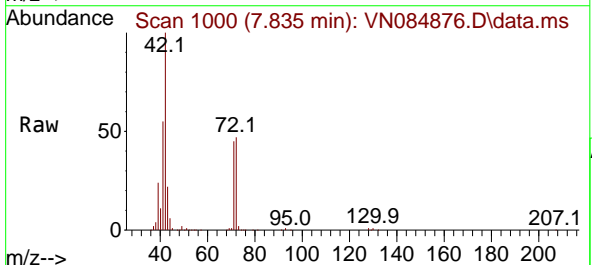
Ion	Ratio	Lower	Upper
78	100		
77	23.5	19.3	28.9
51	34.5	16.1	24.1

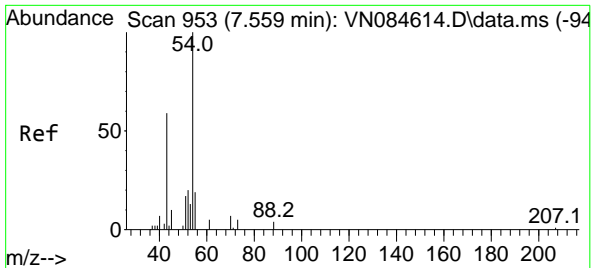


#35  
Methacrylonitrile  
Concen: 367.051 ug/l  
RT: 7.835 min Scan# 1000  
Delta R.T. 0.059 min  
Lab File: VN084876.D  
Acq: 15 Nov 2024 18:00

Tgt Ion: 41 Resp: 396725

Ion	Ratio	Lower	Upper
41	100		
39	43.6	28.2	84.6
67	0.0	35.6	106.8
52	0.2	14.4	43.4

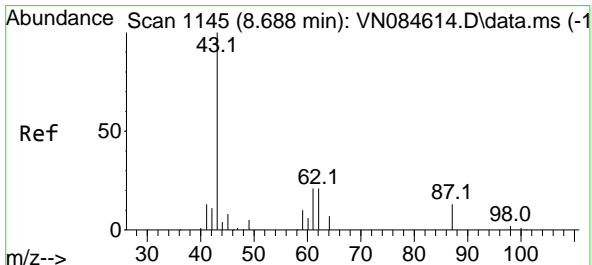
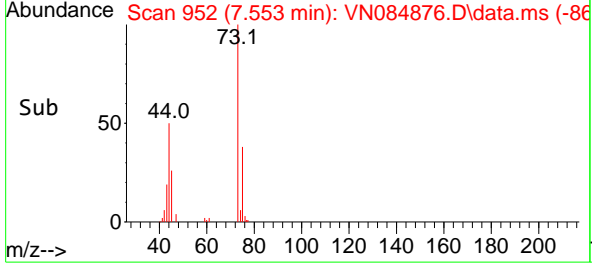
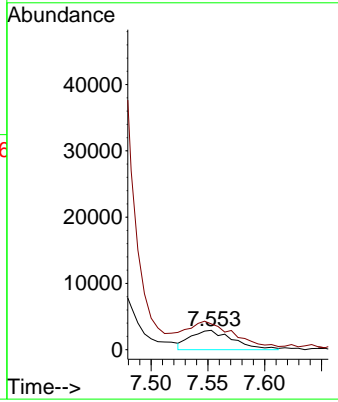
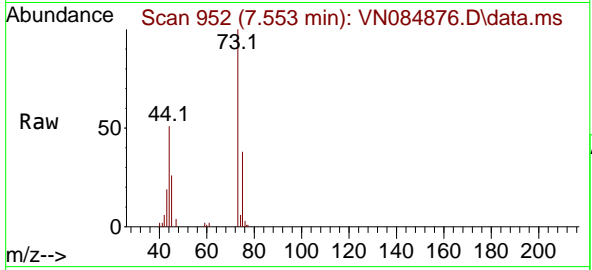




#43  
 Ethyl Acetate  
 Concen: 3.985 ug/l  
 RT: 7.553 min Scan# 91  
 Delta R.T. -0.006 min  
 Lab File: VN084876.D  
 Acq: 15 Nov 2024 18:00

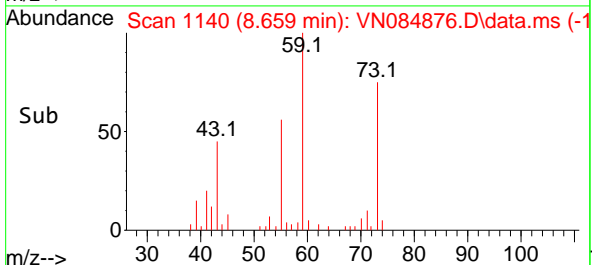
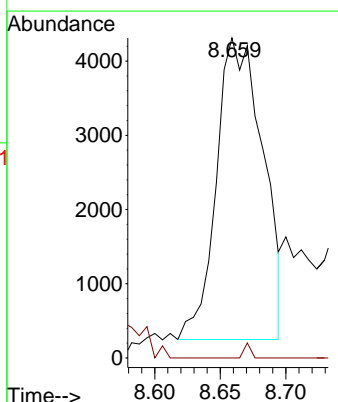
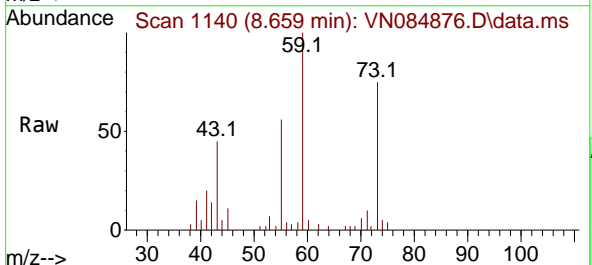
Instrument : MSVOA\_N  
 ClientSampleId :

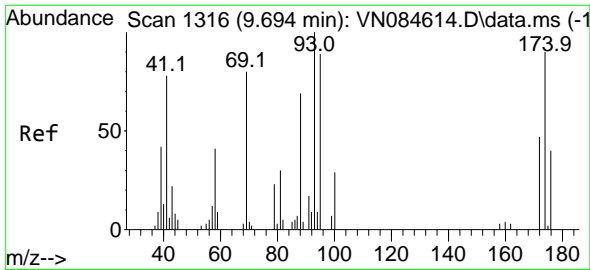
Tgt Ion: 43 Resp: 7637  
 Ion Ratio Lower Upper  
 43 100  
 45 168.5 11.0 16.4#



#44  
 Isopropyl Acetate  
 Concen: 2.578 ug/l  
 RT: 8.659 min Scan# 1140  
 Delta R.T. -0.030 min  
 Lab File: VN084876.D  
 Acq: 15 Nov 2024 18:00

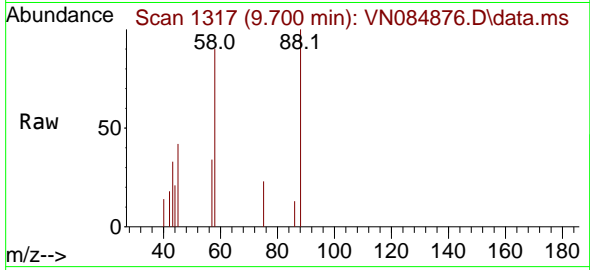
Tgt Ion: 43 Resp: 10004  
 Ion Ratio Lower Upper  
 43 100  
 61 0.0 19.8 29.8#



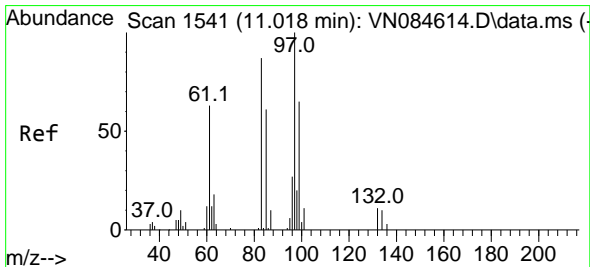
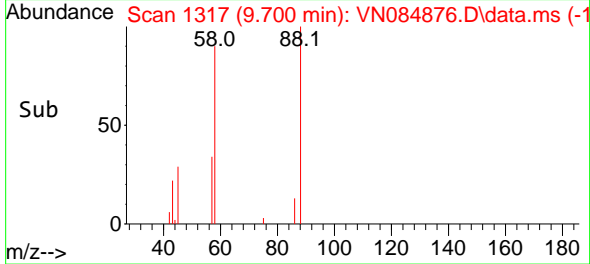
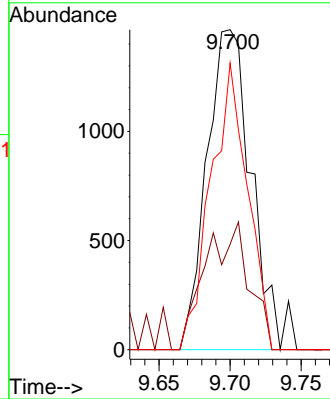


#45  
 1,4-Dioxane  
 Concen: 121.599 ug/l  
 RT: 9.700 min Scan# 11  
 Delta R.T. 0.006 min  
 Lab File: VN084876.D  
 Acq: 15 Nov 2024 18:00

Instrument :  
 MSVOA\_N  
 ClientSampleId :

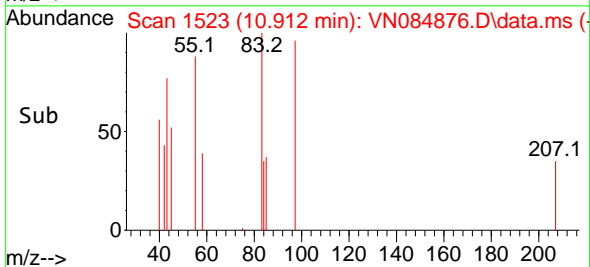
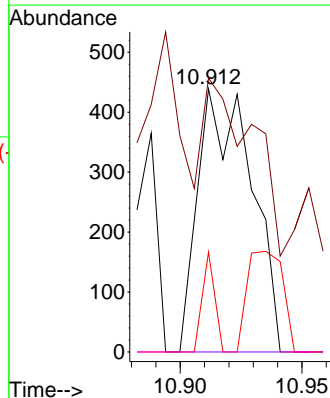
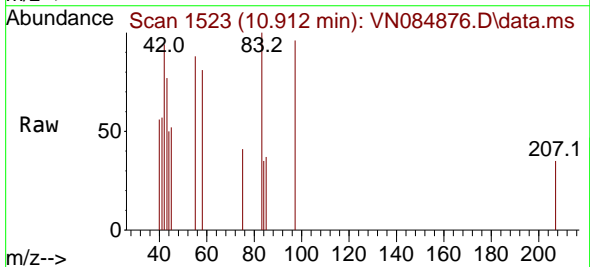


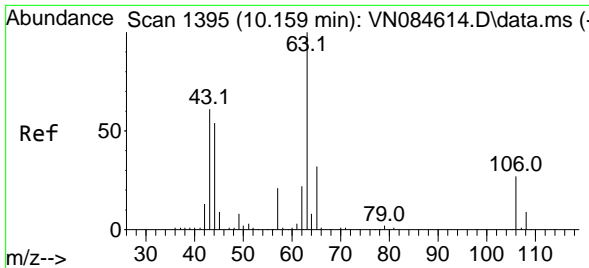
Tgt Ion: 88 Resp: 3150  
 Ion Ratio Lower Upper  
 88 100  
 43 8.1 20.8 31.2#  
 58 75.1 53.4 80.2



#50  
 1,1,2-Trichloroethane  
 Concen: 0.455 ug/l  
 RT: 10.912 min Scan# 1523  
 Delta R.T. -0.106 min  
 Lab File: VN084876.D  
 Acq: 15 Nov 2024 18:00

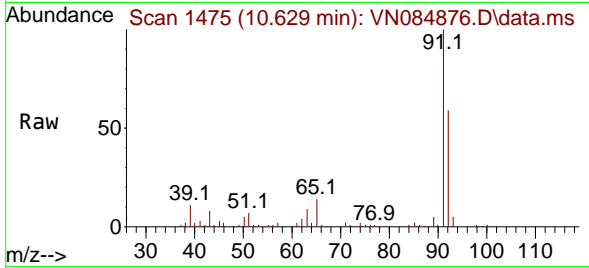
Tgt Ion: 97 Resp: 671  
 Ion Ratio Lower Upper  
 97 100  
 83 67.7 69.8 104.8#  
 85 38.0 48.6 73.0#  
 99 0.0 52.9 79.3#





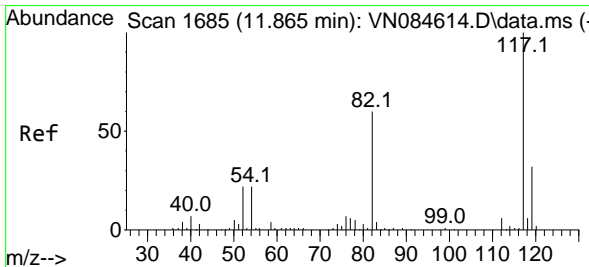
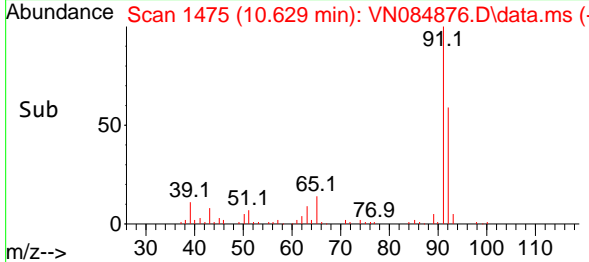
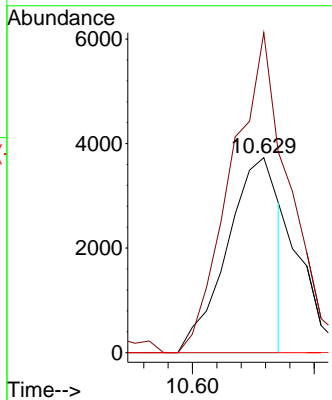
#55  
 2-Chloroethyl vinyl ether  
 Concen: 4.930 ug/l  
 RT: 10.629 min Scan# 14  
 Delta R.T. 0.470 min  
 Lab File: VN084876.D  
 Acq: 15 Nov 2024 18:00

Instrument : MSVOA\_N  
 ClientSampleId :



Tgt Ion: 63 Resp: 5500

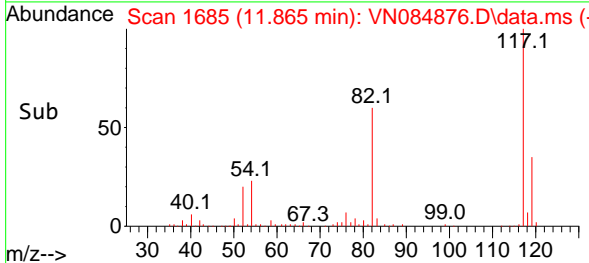
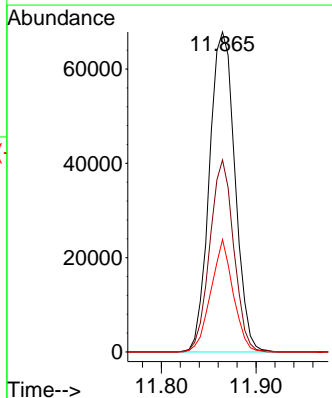
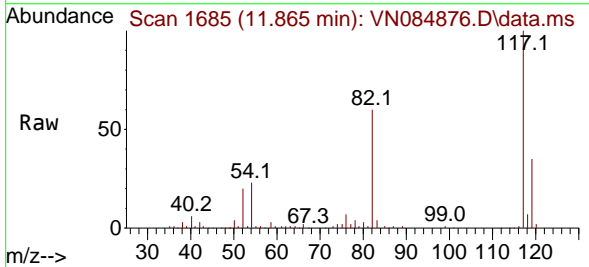
Ion	Ratio	Lower	Upper
63	100		
65	145.2	25.5	38.3#
106	0.0	22.3	33.5#

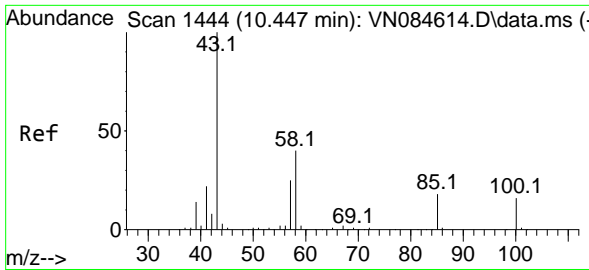


#57  
 Chlorobenzene-d5  
 Concen: 30.000 ug/l  
 RT: 11.865 min Scan# 1685  
 Delta R.T. -0.000 min  
 Lab File: VN084876.D  
 Acq: 15 Nov 2024 18:00

Tgt Ion: 117 Resp: 127289

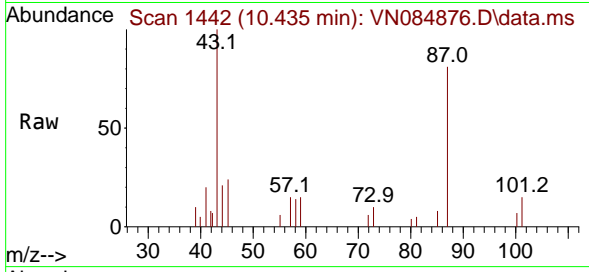
Ion	Ratio	Lower	Upper
117	100		
82	56.3	45.5	68.3
119	30.7	25.3	37.9



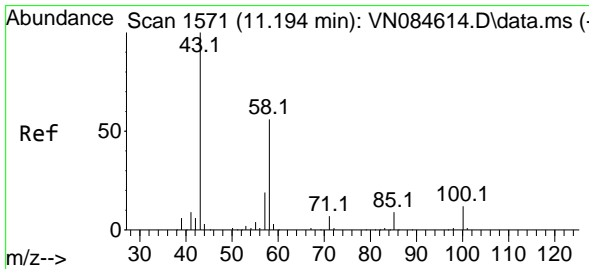
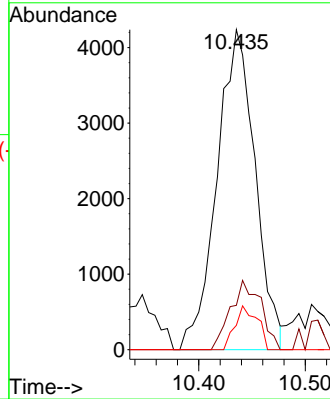
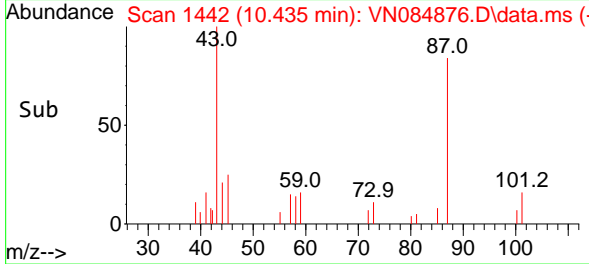


#58  
 4-Methyl-2-Pentanone  
 Concen: 5.255 ug/l  
 RT: 10.435 min Scan# 1444  
 Delta R.T. -0.012 min  
 Lab File: VN084876.D  
 Acq: 15 Nov 2024 18:00

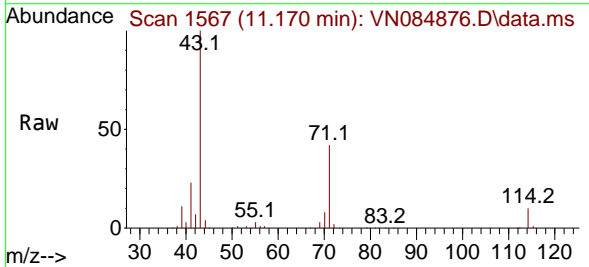
Instrument :  
 MSVOA\_N  
 ClientSampleId :



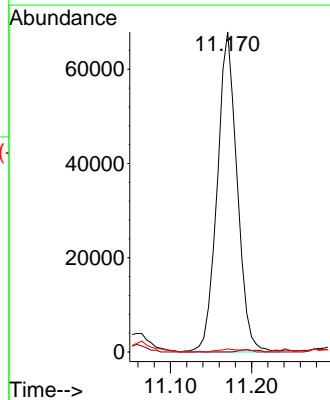
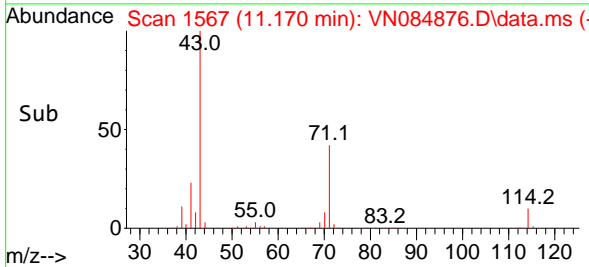
Tgt Ion: 43 Resp: 10552  
 Ion Ratio Lower Upper  
 43 100  
 58 10.9 31.2 46.8#  
 85 8.0 14.9 22.3#



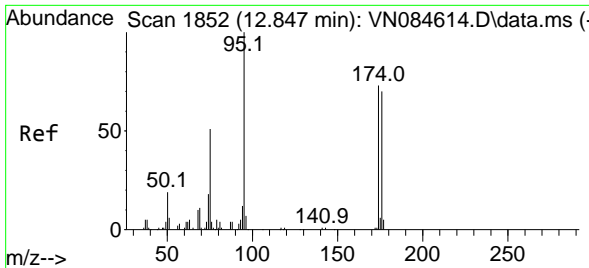
#59  
 2-Hexanone  
 Concen: 78.803 ug/l  
 RT: 11.170 min Scan# 1567  
 Delta R.T. -0.024 min  
 Lab File: VN084876.D  
 Acq: 15 Nov 2024 18:00



Tgt Ion: 43 Resp: 115878  
 Ion Ratio Lower Upper  
 43 100  
 58 0.4 43.8 65.6#  
 57 0.8 15.0 22.6#

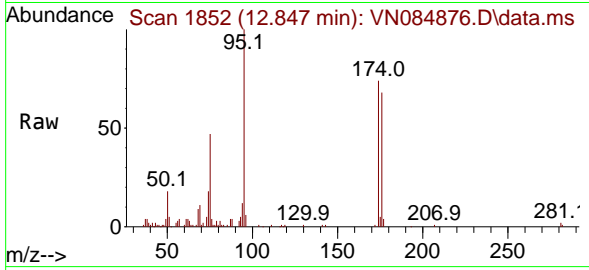






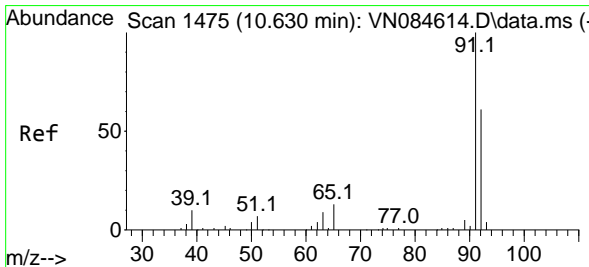
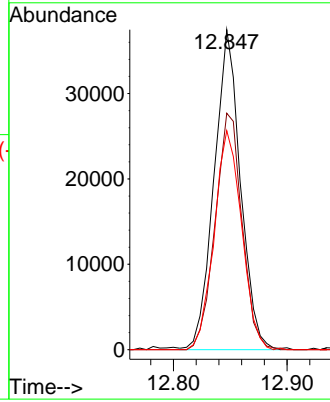
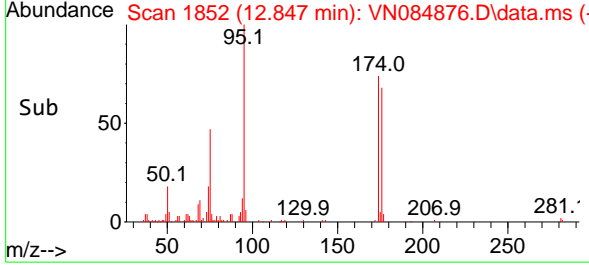
#60  
 4-Bromofluorobenzene  
 Concen: 27.504 ug/l  
 RT: 12.847 min Scan# 1852  
 Delta R.T. -0.000 min  
 Lab File: VN084876.D  
 Acq: 15 Nov 2024 18:00

Instrument : MSVOA\_N  
 ClientSampleId :

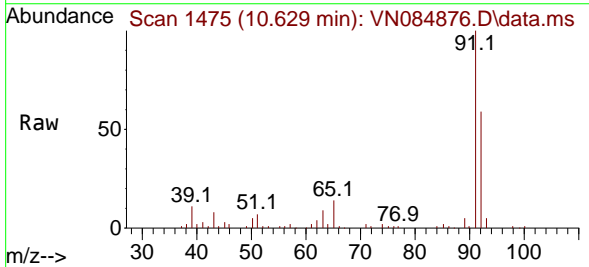


Tgt Ion: 95 Resp: 60280

Ion	Ratio	Lower	Upper
95	100		
174	75.5	59.6	89.4
176	71.4	58.6	88.0

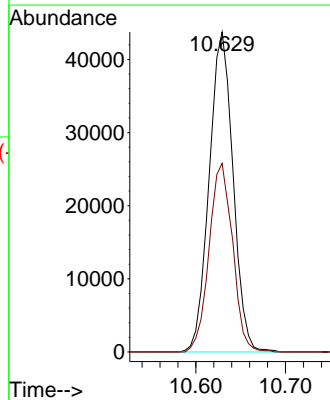
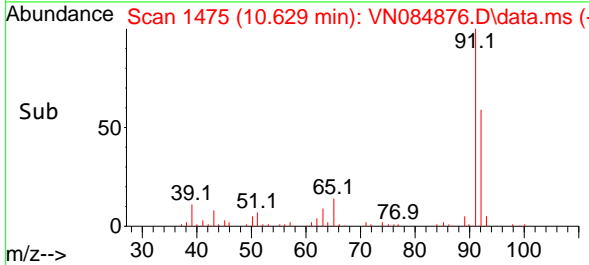


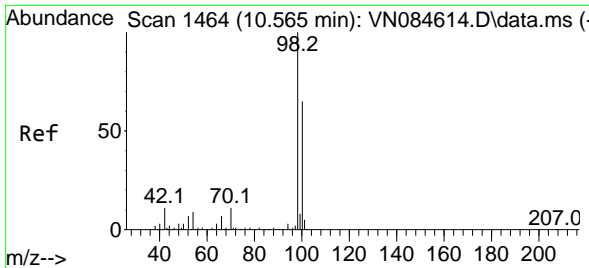
#62  
 Toluene  
 Concen: 11.140 ug/l  
 RT: 10.629 min Scan# 1475  
 Delta R.T. -0.000 min  
 Lab File: VN084876.D  
 Acq: 15 Nov 2024 18:00



Tgt Ion: 91 Resp: 80765

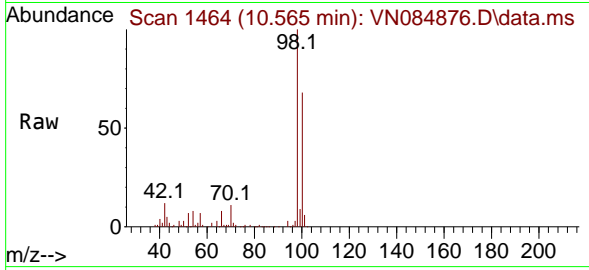
Ion	Ratio	Lower	Upper
91	100		
92	58.1	47.5	71.3



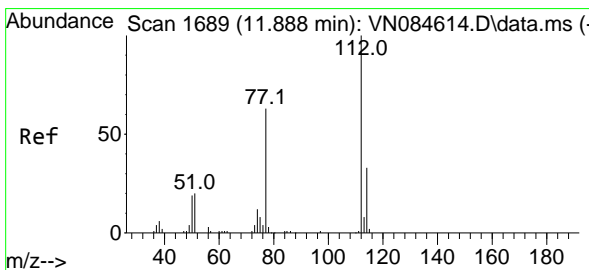
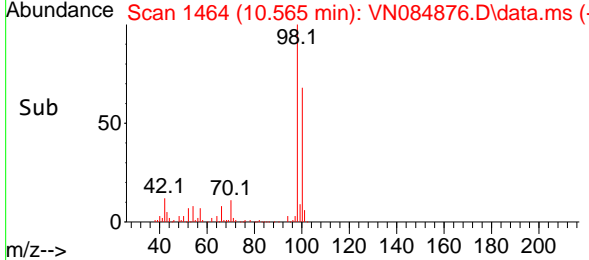
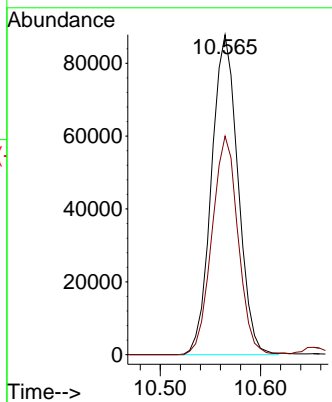


#63  
 Toluene-d8  
 Concen: 26.743 ug/l  
 RT: 10.565 min Scan# 1464  
 Delta R.T. -0.000 min  
 Lab File: VN084876.D  
 Acq: 15 Nov 2024 18:00

Instrument : MSVOA\_N  
 ClientSampleId :

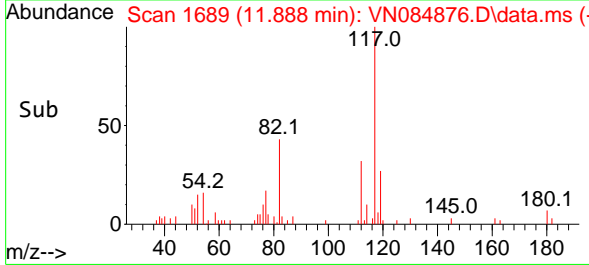
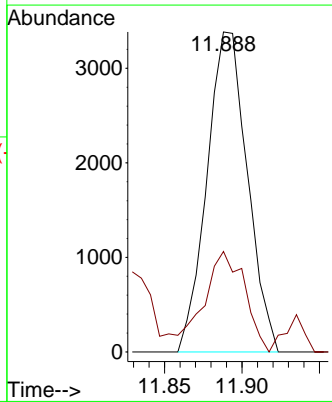
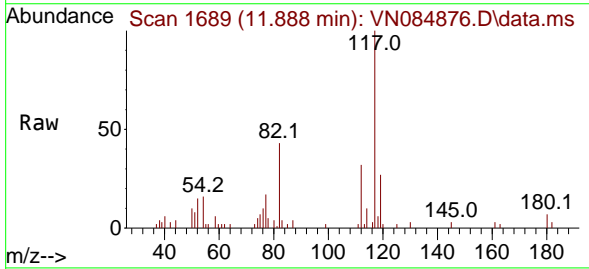


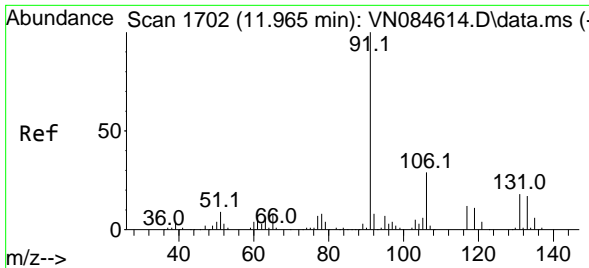
Tgt Ion: 98 Resp: 161151  
 Ion Ratio Lower Upper  
 98 100  
 100 67.3 52.2 78.2



#64  
 Chlorobenzene  
 Concen: 1.401 ug/l  
 RT: 11.888 min Scan# 1689  
 Delta R.T. -0.000 min  
 Lab File: VN084876.D  
 Acq: 15 Nov 2024 18:00

Tgt Ion: 112 Resp: 6131  
 Ion Ratio Lower Upper  
 112 100  
 114 26.2 26.2 39.4#

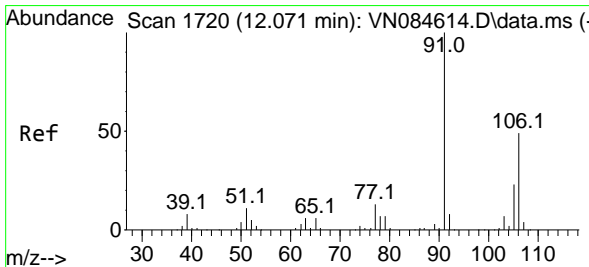
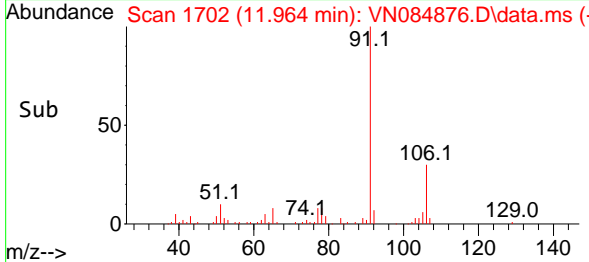
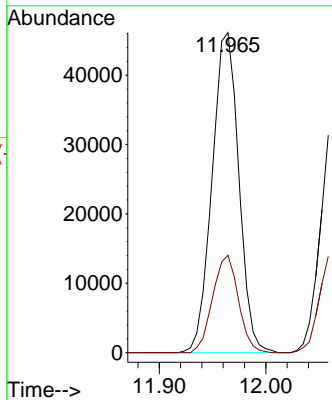
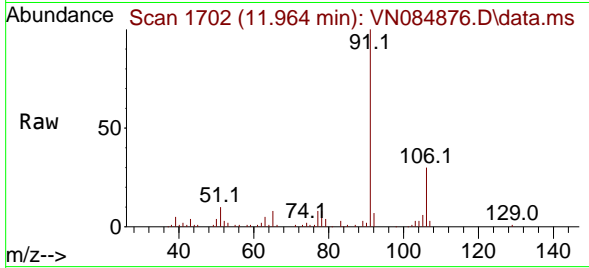




#66  
 Ethyl Benzene  
 Concen: 10.561 ug/l  
 RT: 11.964 min Scan# 1719  
 Delta R.T. -0.000 min  
 Lab File: VN084876.D  
 Acq: 15 Nov 2024 18:00

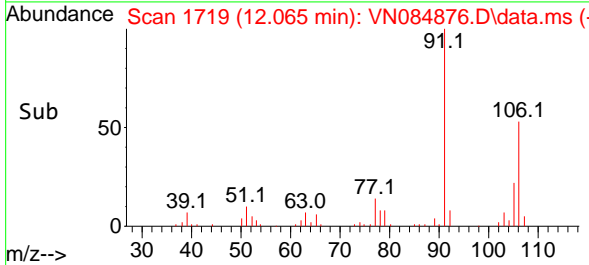
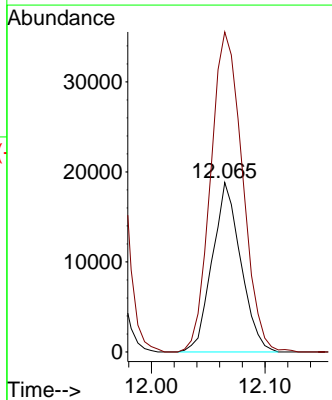
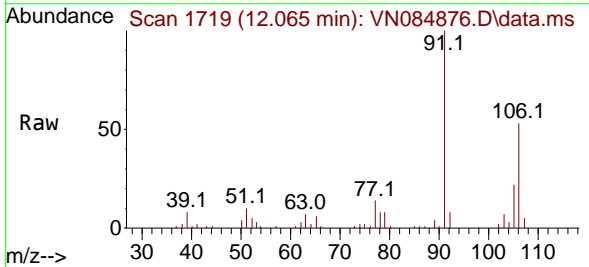
Instrument : MSVOA\_N  
 ClientSampleId :

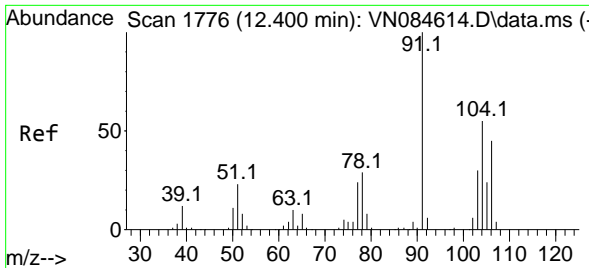
Tgt Ion: 91 Resp: 80469  
 Ion Ratio Lower Upper  
 91 100  
 106 30.4 22.9 34.3



#67  
 m/p-Xylenes  
 Concen: 11.281 ug/l  
 RT: 12.065 min Scan# 1719  
 Delta R.T. -0.006 min  
 Lab File: VN084876.D  
 Acq: 15 Nov 2024 18:00

Tgt Ion: 106 Resp: 32906  
 Ion Ratio Lower Upper  
 106 100  
 91 209.6 168.1 252.1

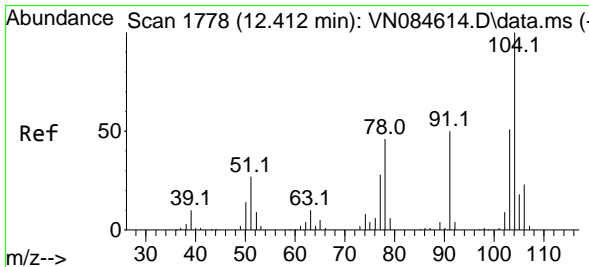
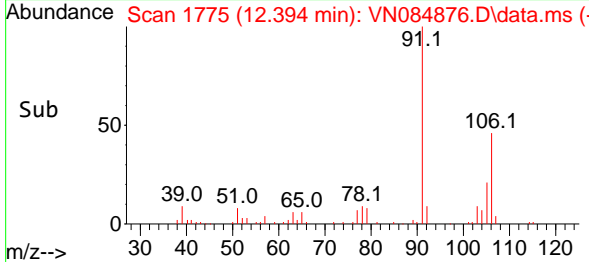
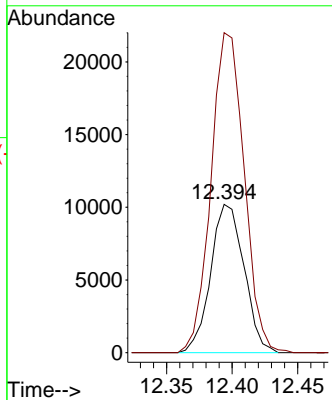
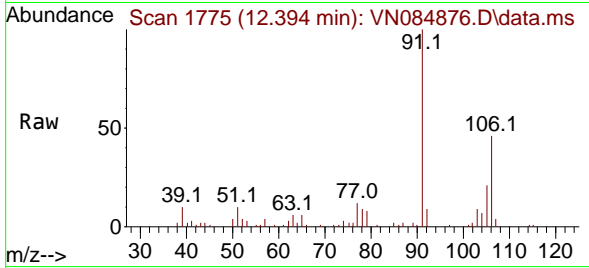




#68  
 o-Xylene  
 Concen: 6.420 ug/l  
 RT: 12.394 min Scan# 1775  
 Delta R.T. -0.006 min  
 Lab File: VN084876.D  
 Acq: 15 Nov 2024 18:00

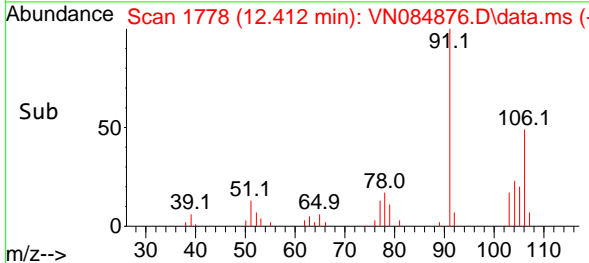
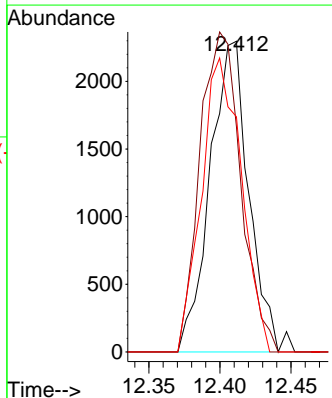
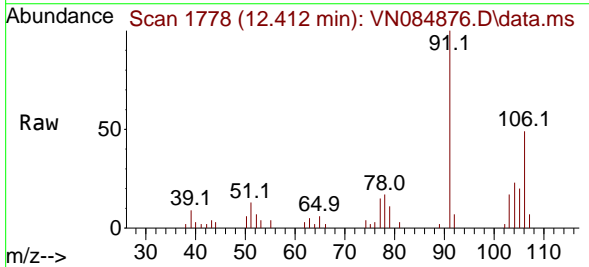
Instrument : MSVOA\_N  
 ClientSampleId :

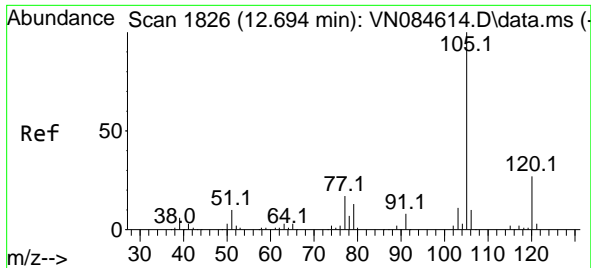
Tgt Ion:106 Resp: 18066  
 Ion Ratio Lower Upper  
 106 100  
 91 214.4 107.7 322.9



#69  
 Styrene  
 Concen: 0.918 ug/l  
 RT: 12.412 min Scan# 1778  
 Delta R.T. -0.000 min  
 Lab File: VN084876.D  
 Acq: 15 Nov 2024 18:00

Tgt Ion:104 Resp: 4332  
 Ion Ratio Lower Upper  
 104 100  
 78 109.4 41.5 62.3#  
 103 97.9 44.6 67.0#

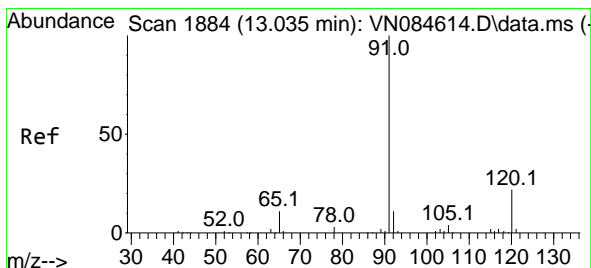
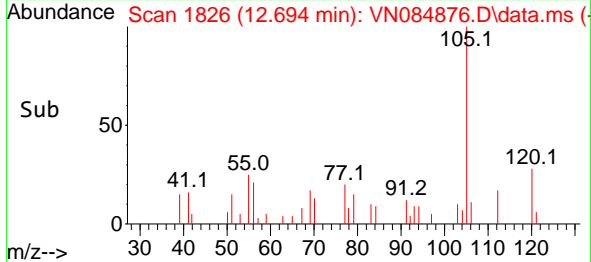
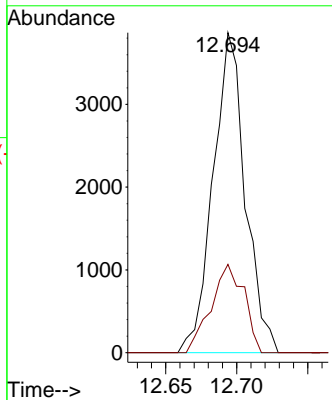
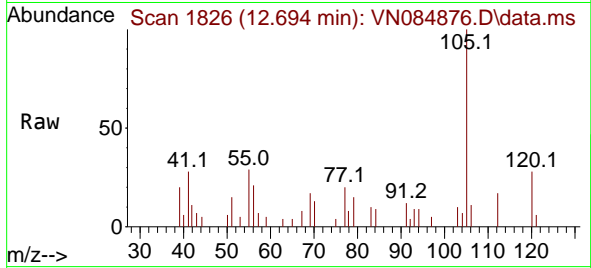




#70  
 Isopropylbenzene  
 Concen: 0.869 ug/l  
 RT: 12.694 min Scan# 1826  
 Delta R.T. -0.000 min  
 Lab File: VN084876.D  
 Acq: 15 Nov 2024 18:00

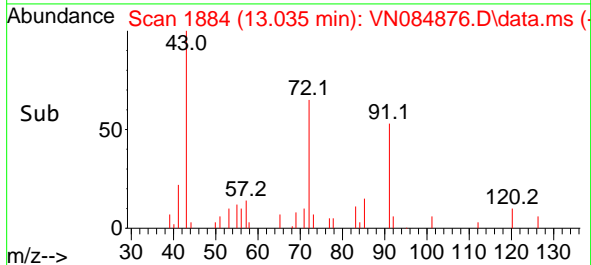
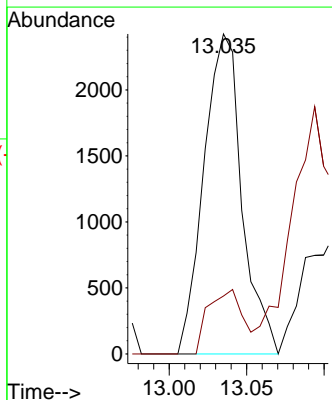
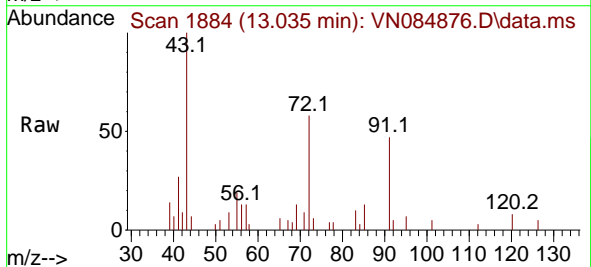
Instrument : MSVOA\_N  
 ClientSampleId :

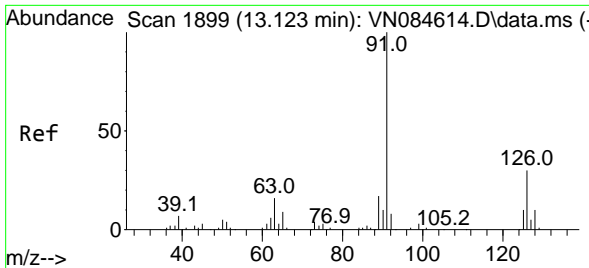
Tgt Ion: 105 Resp: 6074  
 Ion Ratio Lower Upper  
 105 100  
 120 28.4 18.7 34.7



#74  
 n-propylbenzene  
 Concen: 0.507 ug/l  
 RT: 13.035 min Scan# 1884  
 Delta R.T. -0.000 min  
 Lab File: VN084876.D  
 Acq: 15 Nov 2024 18:00

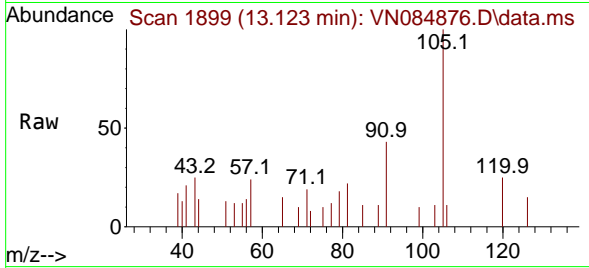
Tgt Ion: 91 Resp: 4142  
 Ion Ratio Lower Upper  
 91 100  
 120 18.2 0.0 44.0



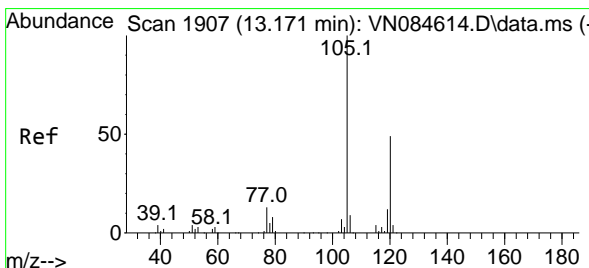
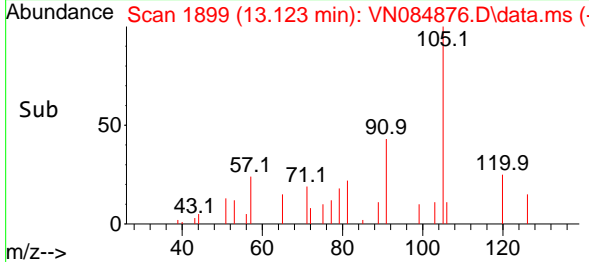
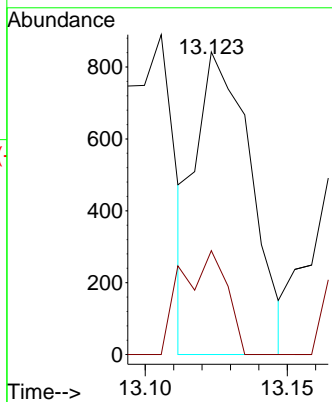


#75  
 2-Chlorotoluene  
 Concen: 0.213 ug/l  
 RT: 13.123 min Scan# 1899  
 Delta R.T. -0.000 min  
 Lab File: VN084876.D  
 Acq: 15 Nov 2024 18:00

Instrument : MSVOA\_N  
 ClientSampleId :

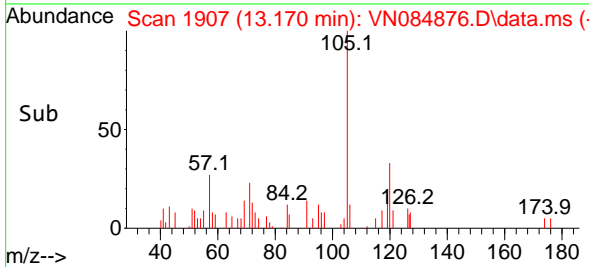
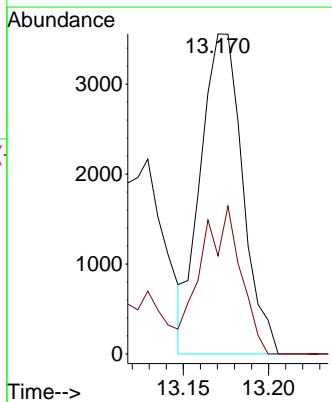
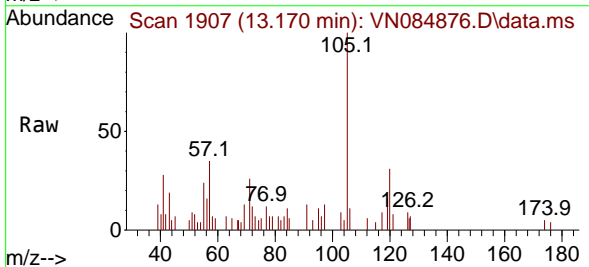


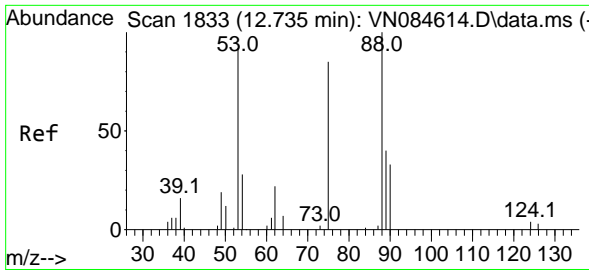
Tgt Ion: 91 Resp: 1134  
 Ion Ratio Lower Upper  
 91 100  
 126 28.1 0.0 60.8



#76  
 1,3,5-Trimethylbenzene  
 Concen: 1.023 ug/l  
 RT: 13.170 min Scan# 1907  
 Delta R.T. -0.000 min  
 Lab File: VN084876.D  
 Acq: 15 Nov 2024 18:00

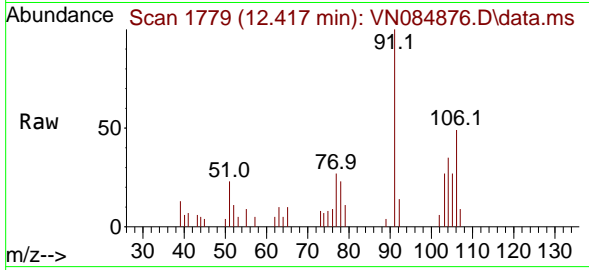
Tgt Ion: 105 Resp: 6111  
 Ion Ratio Lower Upper  
 105 100  
 120 43.1 0.0 96.8



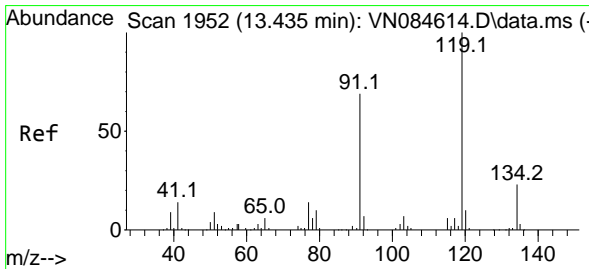
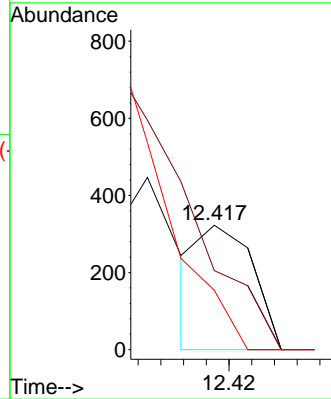
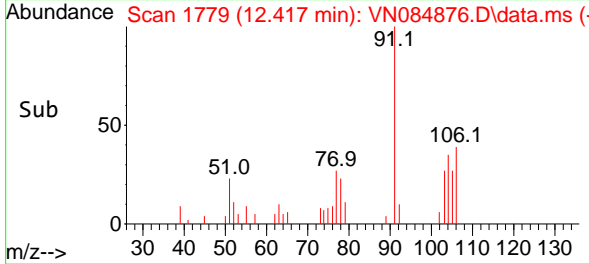


#77  
 t-1,4-Dichloro-2-butene  
 Concen: 0.261 ug/l  
 RT: 12.417 min Scan# 11  
 Delta R.T. -0.318 min  
 Lab File: VN084876.D  
 Acq: 15 Nov 2024 18:00

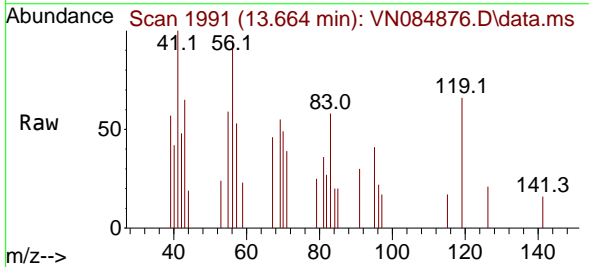
Instrument : MSVOA\_N  
 ClientSampleId :



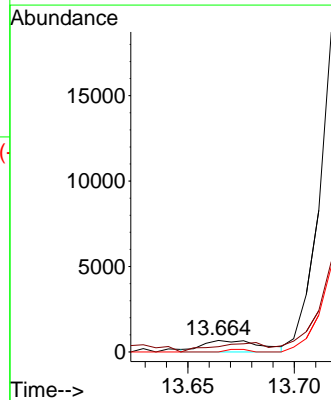
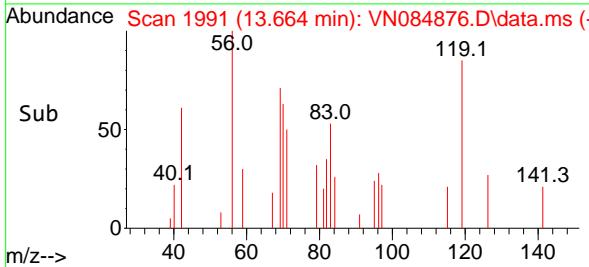
Tgt Ion: 75 Resp: 207  
 Ion Ratio Lower Upper  
 75 100  
 53 63.5 52.4 157.2  
 89 47.7 26.0 78.0

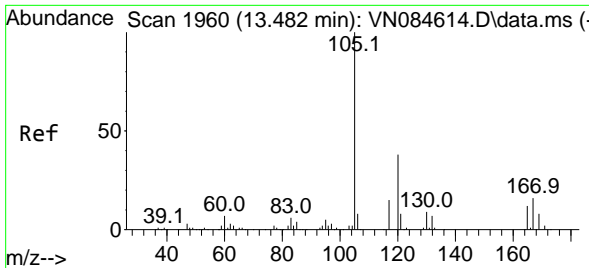


#79  
 tert-butylbenzene  
 Concen: 0.261 ug/l  
 RT: 13.664 min Scan# 1991  
 Delta R.T. 0.229 min  
 Lab File: VN084876.D  
 Acq: 15 Nov 2024 18:00



Tgt Ion: 119 Resp: 1287  
 Ion Ratio Lower Upper  
 119 100  
 91 70.1 0.0 143.2  
 134 8.3 0.0 49.4

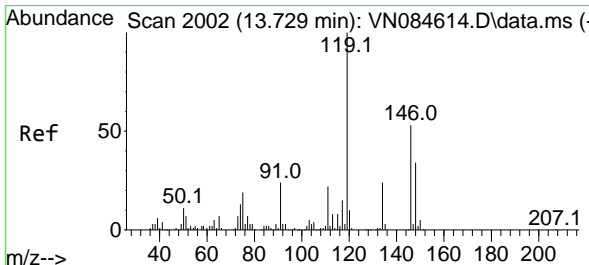
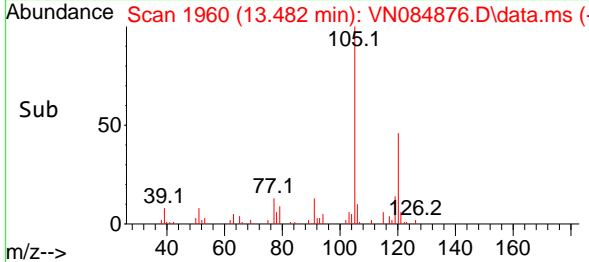
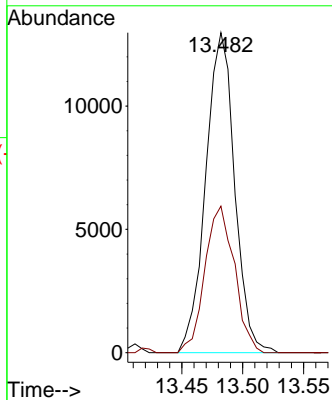
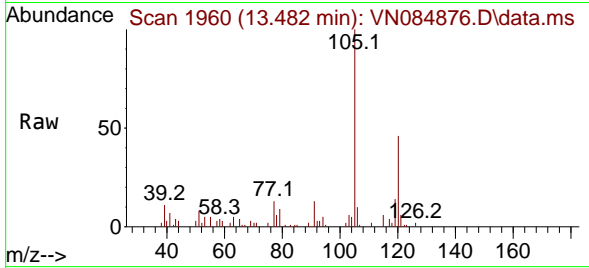




#80  
 1,2,4-Trimethylbenzene  
 Concen: 3.564 ug/l  
 RT: 13.482 min Scan# 1960  
 Delta R.T. -0.000 min  
 Lab File: VN084876.D  
 Acq: 15 Nov 2024 18:00

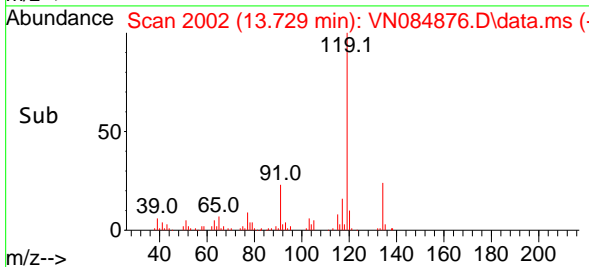
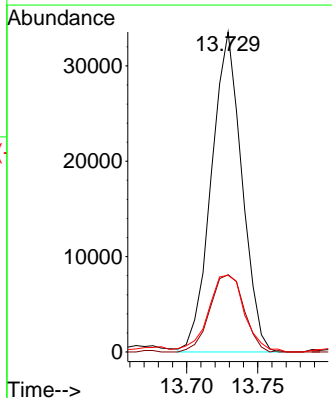
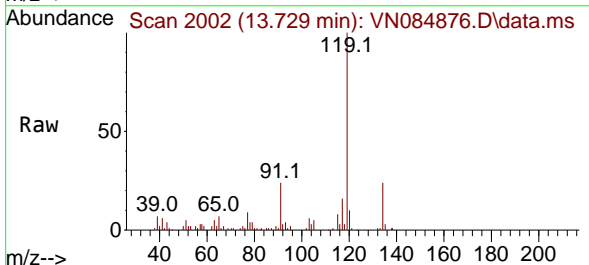
Instrument :  
 MSVOA\_N  
 ClientSampleId :

Tgt Ion:105 Resp: 21472  
 Ion Ratio Lower Upper  
 105 100  
 120 46.6 0.0 90.4

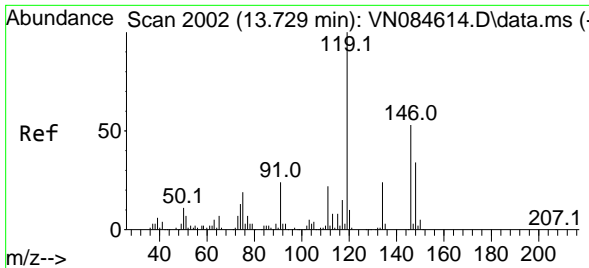


#82  
 p-Isopropyltoluene  
 Concen: 8.766 ug/l  
 RT: 13.729 min Scan# 2002  
 Delta R.T. -0.000 min  
 Lab File: VN084876.D  
 Acq: 15 Nov 2024 18:00

Tgt Ion:119 Resp: 50130  
 Ion Ratio Lower Upper  
 119 100  
 134 26.8 0.0 51.4  
 91 28.5 0.0 50.4

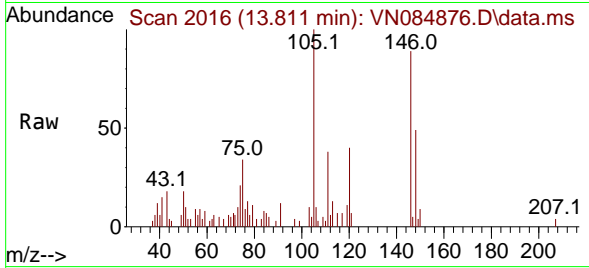






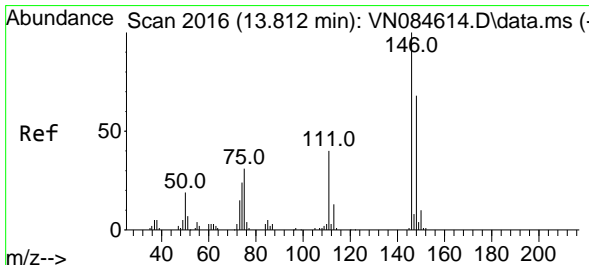
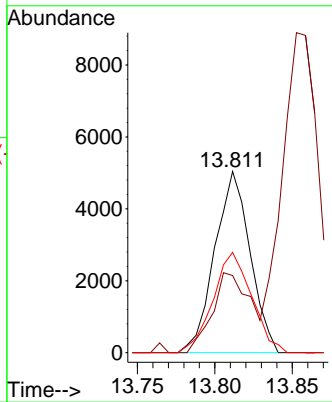
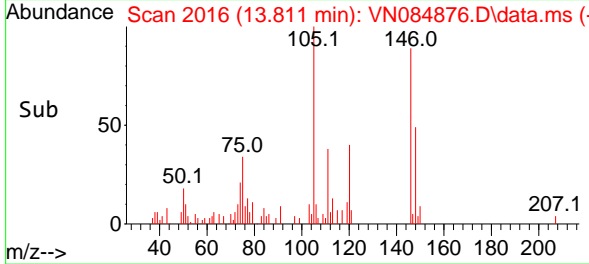
#83  
 1,3-Dichlorobenzene  
 Concen: 2.397 ug/l  
 RT: 13.811 min Scan# 2016  
 Delta R.T. 0.082 min  
 Lab File: VN084876.D  
 Acq: 15 Nov 2024 18:00

Instrument : MSVOA\_N  
 ClientSampleId :

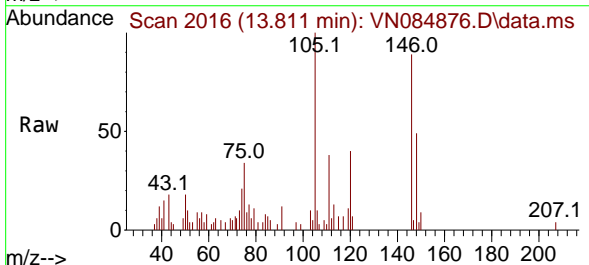


Tgt Ion:146 Resp: 7992

Ion	Ratio	Lower	Upper
146	100		
111	47.4	21.0	63.0
148	60.6	31.3	93.8

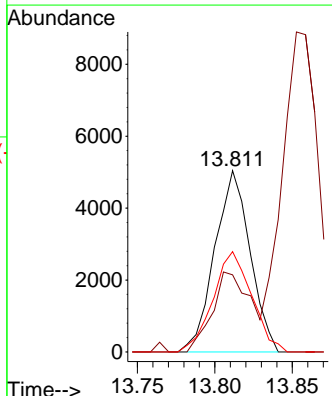
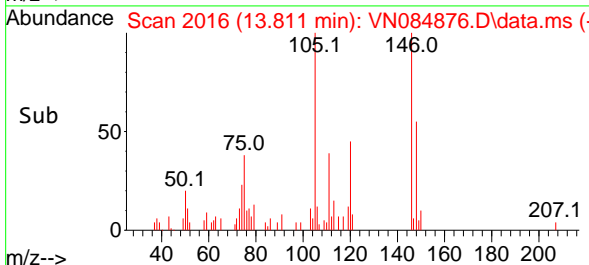


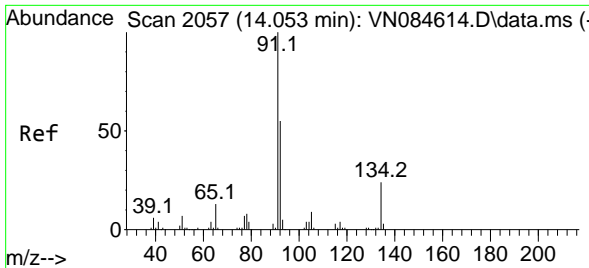
#84  
 1,4-Dichlorobenzene  
 Concen: 2.426 ug/l  
 RT: 13.811 min Scan# 2016  
 Delta R.T. -0.000 min  
 Lab File: VN084876.D  
 Acq: 15 Nov 2024 18:00



Tgt Ion:146 Resp: 7992

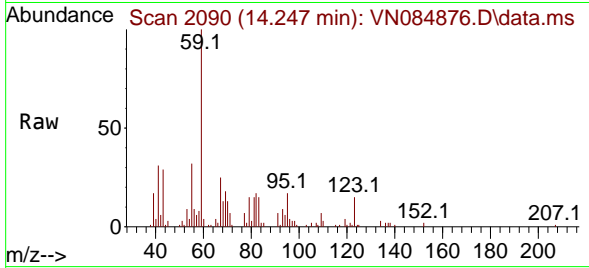
Ion	Ratio	Lower	Upper
146	100		
111	47.4	20.2	60.5
148	60.6	32.6	98.0



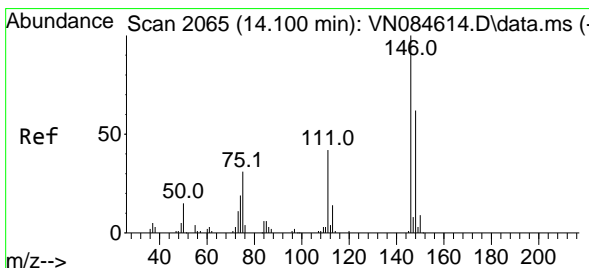
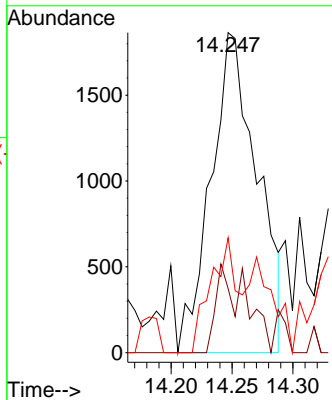
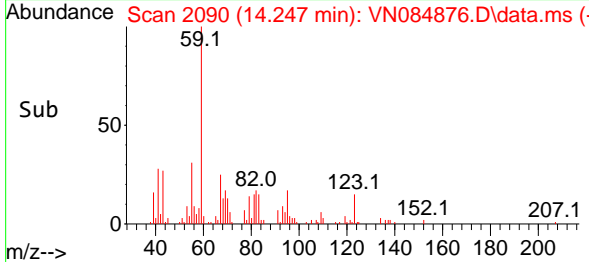


#85  
 n-Butylbenzene  
 Concen: 1.027 ug/l  
 RT: 14.247 min Scan# 2016  
 Delta R.T. 0.194 min  
 Lab File: VN084876.D  
 Acq: 15 Nov 2024 18:00

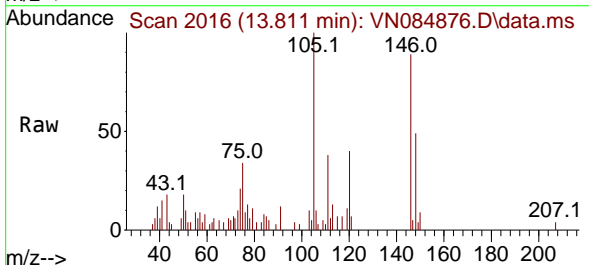
Instrument : MSVOA\_N  
 ClientSampleId :



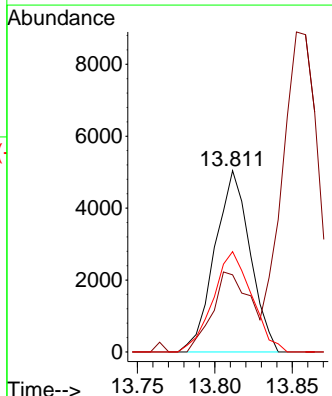
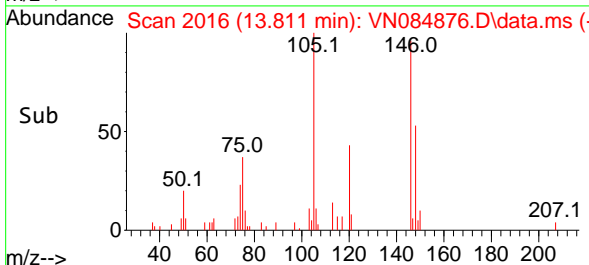
Tgt Ion: 91 Resp: 4932  
 Ion Ratio Lower Upper  
 91 100  
 92 9.4 0.0 106.2  
 134 20.7 0.0 48.2

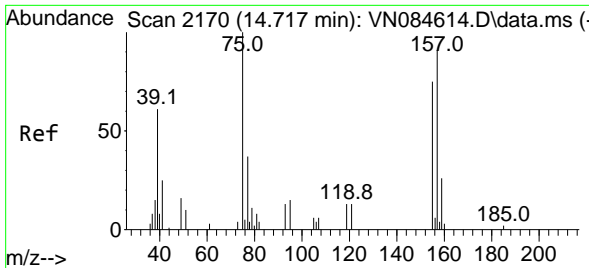


#87  
 1,2-Dichlorobenzene  
 Concen: 2.432 ug/l  
 RT: 13.811 min Scan# 2016  
 Delta R.T. -0.288 min  
 Lab File: VN084876.D  
 Acq: 15 Nov 2024 18:00



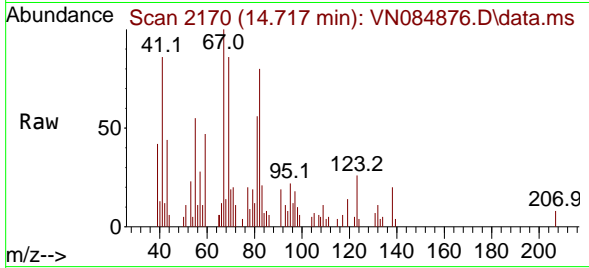
Tgt Ion:146 Resp: 7992  
 Ion Ratio Lower Upper  
 146 100  
 111 47.4 22.4 67.0  
 148 60.6 32.6 98.0





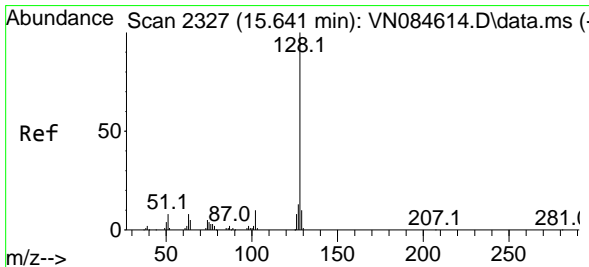
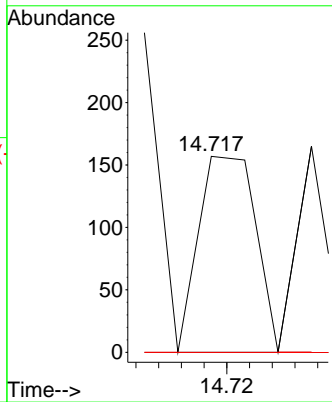
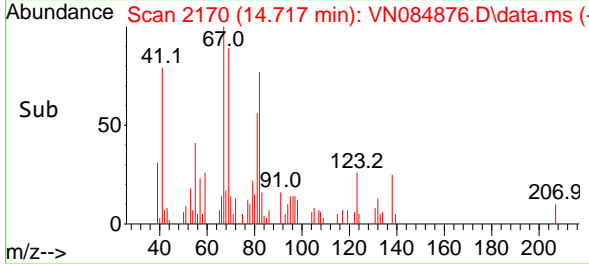
#88  
 1,2-Dibromo-3-Chloropropane  
 Concen: 0.252 ug/l  
 RT: 14.717 min Scan# 2170  
 Delta R.T. -0.000 min  
 Lab File: VN084876.D  
 Acq: 15 Nov 2024 18:00

Instrument : MSVOA\_N  
 ClientSampleId :

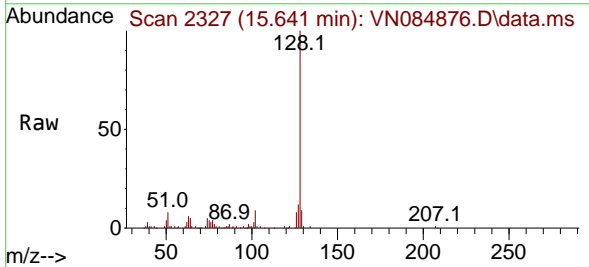


Tgt Ion: 75 Resp: 110

Ion	Ratio	Lower	Upper
75	100		
155	0.0	61.8	92.6#
157	0.0	74.7	112.1#



#91  
 Naphthalene  
 Concen: 24.238 ug/l  
 RT: 15.641 min Scan# 2327  
 Delta R.T. -0.000 min  
 Lab File: VN084876.D  
 Acq: 15 Nov 2024 18:00



Tgt Ion: 128 Resp: 123830

Ion	Ratio	Lower	Upper
128	100		
127	13.0	10.3	15.5
129	10.5	8.6	12.8

