

Data Path : Z:\voasrv\HPCHEM1\MSVOA\_N\Data\VN111524\  
 Data File : VN084881.D  
 Acq On : 15 Nov 2024 20:00  
 Operator : JC\MD  
 Sample : IBLK  
 Misc : 5.0mL/MSVOA\_N/WATER  
 ALS Vial : 17 Sample Multiplier: 1

Instrument :  
 MSVOA\_N  
 ClientSampleId :  
 IBLK

Integration Parameters: RTEINT3.P  
 Integrator: RTE  
 Smoothing : OFF  
 Sampling : 1  
 Start Thrs: 0.2  
 Stop Thrs : 0  
 Filtering: 5  
 Min Area: 0 % of largest Peak  
 Max Peaks: 100  
 Peak Location: TOP

If leading or trailing edge < 100 prefer < Baseline drop else tangent >  
 Peak separation: 5

Method : Z:\voasrv\HPCHEM1\MSVOA\_N\methods\624N103124W.M  
 Title : METHOD 624 VOLATILE ORGANIC ANALYSIS

Signal : TIC: VN084881.D\data.ms

peak #	R.T. min	first scan	max scan	last scan	PK TY	peak height	corr. area	corr. % max.	% of total
1	2.289	56	57	64	rVB2	3901	5528	1.50%	0.324%
2	2.830	138	149	150	rBV7	9597	21187	5.76%	1.242%
3	4.741	463	474	484	rBV2	8398	26714	7.26%	1.567%
4	7.235	889	898	902	rBV	2092	5694	1.55%	0.334%
5	7.806	987	995	1007	rBV2	70830	177236	48.18%	10.394%
6	8.576	1114	1126	1136	rBV	75788	170847	46.44%	10.019%
7	8.753	1146	1156	1157	rBV	7817	17744	4.82%	1.041%
8	9.100	1207	1215	1224	rBV	141917	286659	77.92%	16.811%
9	10.565	1455	1464	1472	rBV	201131	367875	100.00%	21.574%
10	11.865	1676	1685	1697	rBB	182389	320342	87.08%	18.786%
11	12.417	1771	1779	1786	rBV	18733	30211	8.21%	1.772%
12	12.847	1845	1852	1861	rVB	128945	213574	58.06%	12.525%
13	14.247	2085	2090	2094	rVB4	4700	7305	1.99%	0.428%
14	14.353	2101	2108	2114	rBV	25903	42717	11.61%	2.505%
15	14.423	2116	2120	2122	rVV2	3915	5360	1.46%	0.314%
16	14.441	2122	2123	2131	rVB4	4421	6208	1.69%	0.364%

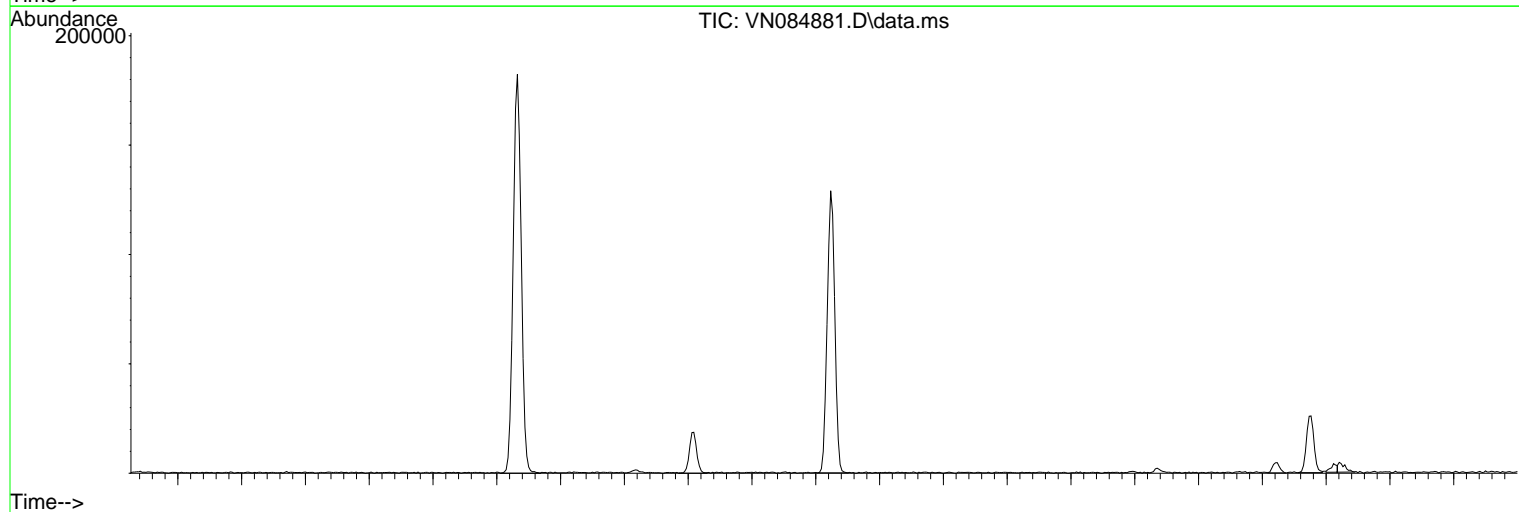
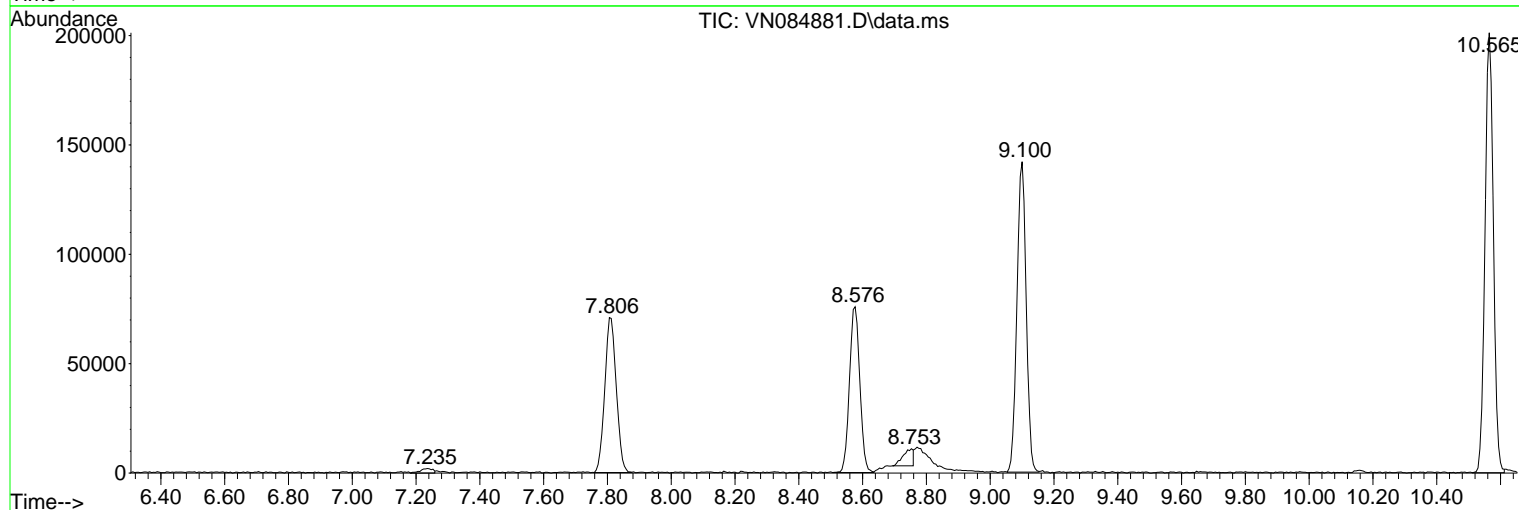
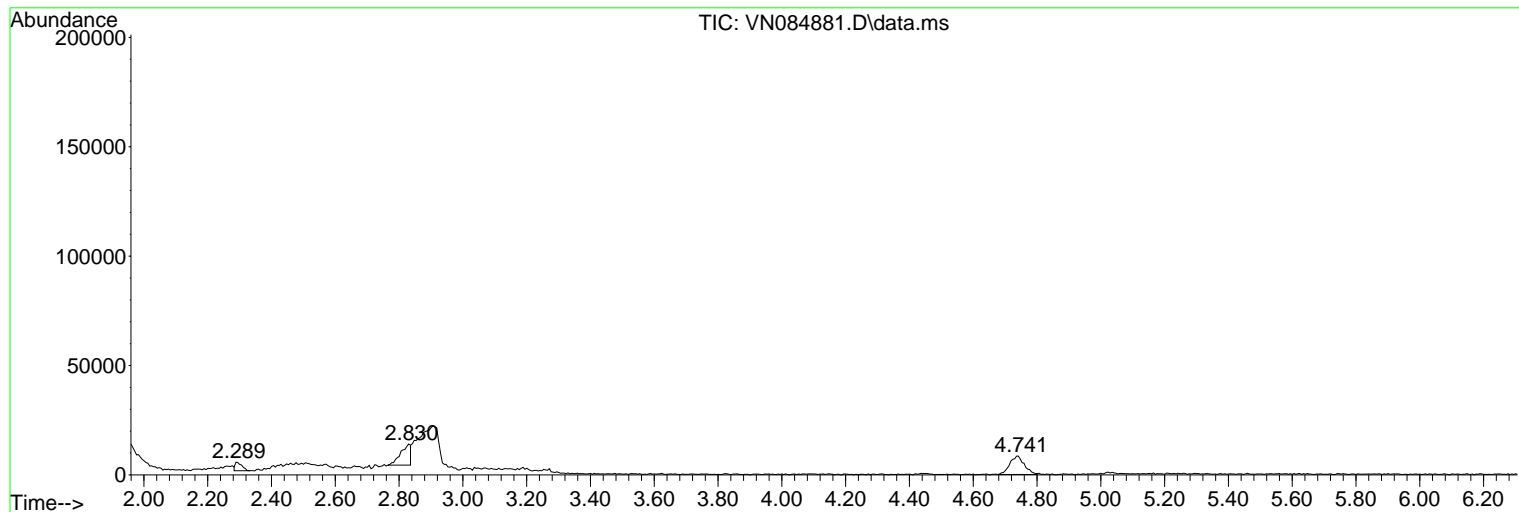
Sum of corrected areas: 1705201

Data Path : Z:\voasrv\HPCHEM1\MSVOA\_N\Data\VN111524\  
 Data File : VN084881.D  
 Acq On : 15 Nov 2024 20:00  
 Operator : JC\MD  
 Sample : IBLK  
 Misc : 5.0mL/MSVOA\_N/WATER  
 ALS Vial : 17 Sample Multiplier: 1

Instrument :  
 MSVOA\_N  
 ClientSampleId :  
 IBLK

Quant Method : Z:\voasrv\HPCHEM1\MSVOA\_N\methods\624N103124W.M  
 Quant Title : METHOD 624 VOLATILE ORGANIC ANALYSIS

TIC Library : C:\Database\NIST20.L  
 TIC Integration Parameters: LSCINT.P



Data Path : Z:\voasrv\HPCHEM1\MSVOA\_N\Data\VN111524\  
 Data File : VN084881.D  
 Acq On : 15 Nov 2024 20:00  
 Operator : JC\MD  
 Sample : IBLK  
 Misc : 5.0mL/MSVOA\_N/WATER  
 ALS Vial : 17 Sample Multiplier: 1

Instrument :  
 MSVOA\_N  
 ClientSampleId :  
 IBLK

Quant Method : Z:\voasrv\HPCHEM1\MSVOA\_N\methods\624N103124W.M  
 Quant Title : METHOD 624 VOLATILE ORGANIC ANALYSIS

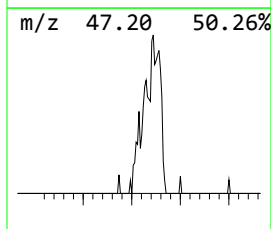
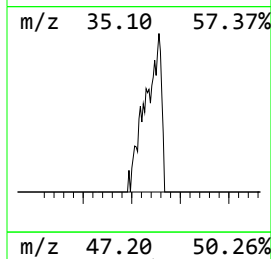
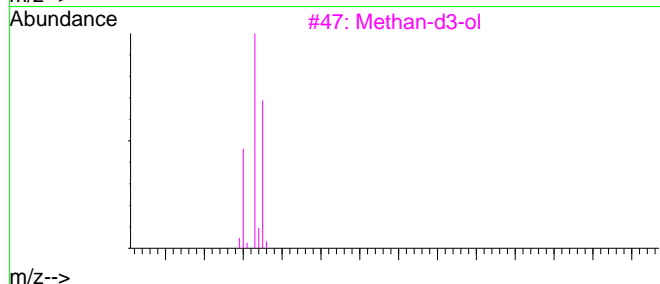
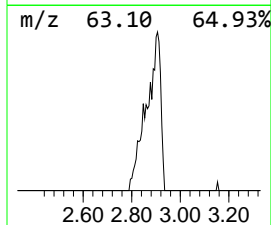
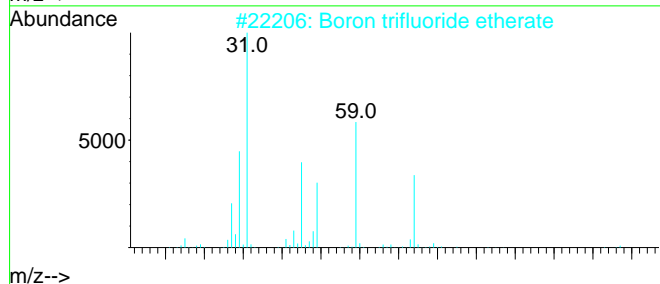
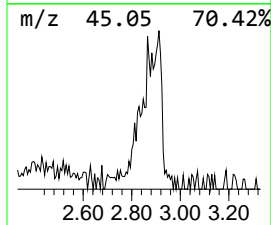
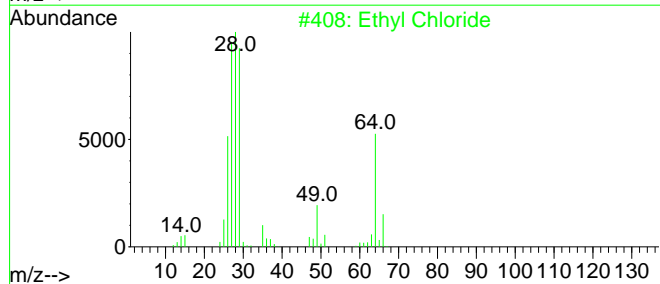
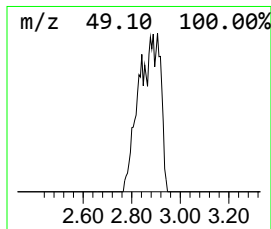
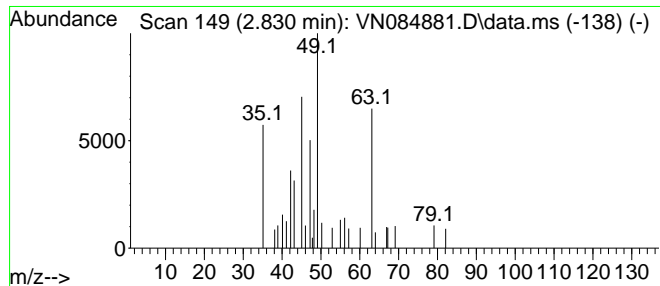
TIC Library : C:\Database\NIST20.L  
 TIC Integration Parameters: LSCINT.P

\*\*\*\*\*  
 Peak Number 1 unknown2.830 Concentration Rank 3

R.T.	EstConc	Area	Relative to ISTD	R.T.
2.830	3.59 ug/l	21187	Bromochloromethane	7.806

Hit# of 5	Tentative ID	MW	MolForm	CAS#	Qual
1	Ethyl Chloride	64	C2H5Cl	000075-00-3	33
2	Boron trifluoride etherate	142	C4H10BF3O	000109-63-7	4
3	Methan-d3-ol	35	CHD3O	001849-29-2	3
4	Methan-d3-ol	35	CHD3O	001849-29-2	3
5	2-Chloroethyl methyl sulfone	142	C3H7ClO2S	050890-51-2	2



Data Path : Z:\voasrv\HPCHEM1\MSVOA\_N\Data\VN111524\  
 Data File : VN084881.D  
 Acq On : 15 Nov 2024 20:00  
 Operator : JC\MD  
 Sample : IBLK  
 Misc : 5.0mL/MSVOA\_N/WATER  
 ALS Vial : 17 Sample Multiplier: 1

Instrument :  
 MSVOA\_N  
 ClientSampleId :  
 IBLK

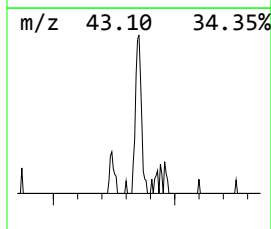
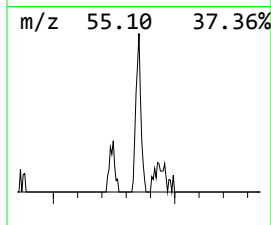
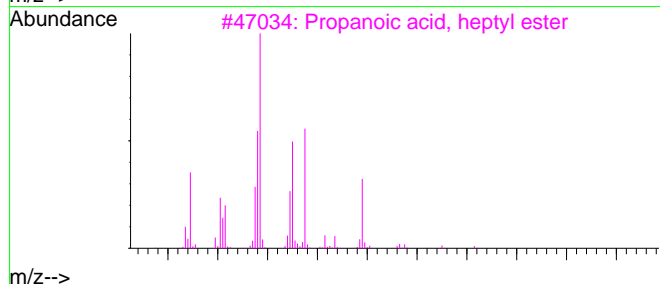
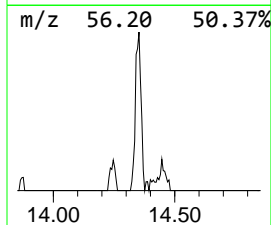
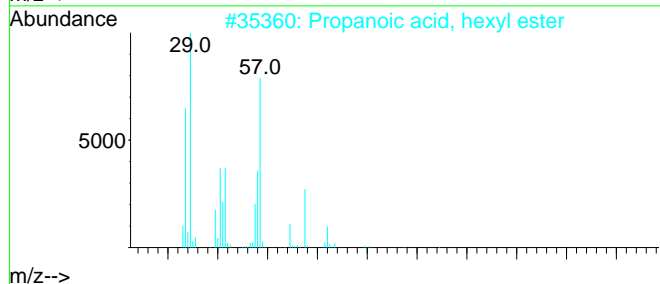
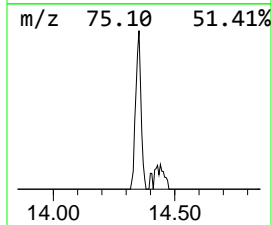
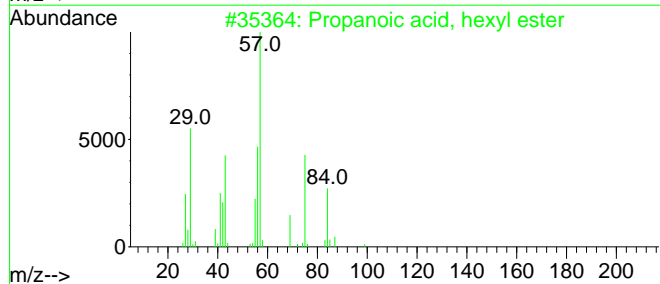
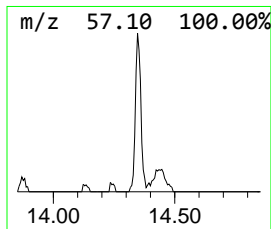
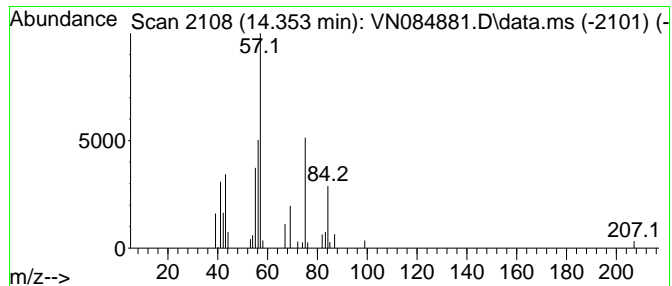
Quant Method : Z:\voasrv\HPCHEM1\MSVOA\_N\methods\624N103124W.M  
 Quant Title : METHOD 624 VOLATILE ORGANIC ANALYSIS

TIC Library : C:\Database\NIST20.L  
 TIC Integration Parameters: LSCINT.P

\*\*\*\*\*  
 Peak Number 3 Propanoic acid, hexyl ester Concentration Rank 2

R.T.	EstConc	Area	Relative to ISTD	R.T.
14.353	4.00 ug/l	42717	Chlorobenzene-d5	11.865

Hit# of	Tentative ID	MW	MolForm	CAS#	Qual
1	Propanoic acid, hexyl ester	158	C9H18O2	002445-76-3	72
2	Propanoic acid, hexyl ester	158	C9H18O2	002445-76-3	64
3	Propanoic acid, heptyl ester	172	C10H20O2	002216-81-1	64
4	Propanoic acid, hexyl ester	158	C9H18O2	002445-76-3	59
5	Propanoic acid, heptyl ester	172	C10H20O2	002216-81-1	45



Data Path : Z:\voasrv\HPCHEM1\MSVOA\_N\Data\VN111524\  
Data File : VN084881.D  
Acq On : 15 Nov 2024 20:00  
Operator : JC\MD  
Sample : IBLK  
Misc : 5.0mL/MSVOA\_N/WATER  
ALS Vial : 17 Sample Multiplier: 1

Instrument :  
MSVOA\_N  
ClientSampleId :  
IBLK

Quant Method : Z:\voasrv\HPCHEM1\MSVOA\_N\methods\624N103124W.M  
Quant Title : METHOD 624 VOLATILE ORGANIC ANALYSIS

TIC Library : C:\Database\NIST20.L  
TIC Integration Parameters: LSCINT.P

TIC Top Hit name	RT	EstConc	Units	Response	--Internal Standard--			
					#	RT	Resp	Conc
unknown2.830	2.830	3.6	ug/l	21187	1	7.806	177236	30.0
Propanoic acid,...	14.353	4.0	ug/l	42717	3	11.865	320342	30.0