

Data Path : Z:\VOASRV\HPCHEM1\MSVOA N\DATA\VN111618\
 Data File : VN052356.D
 Acq On : 16 Nov 2018 11:27
 Operator : MD\SY
 Sample : J5973-01
 Misc : 5.00mL/MSVOA N/WATER
 ALS Vial : 7 Sample Multiplier: 28

Instrument :
 MSVOA_N
 ClientSampleId :
 SPDES-1

Quant Time: Nov 19 13:44:27 2018
 Quant Method : Z:\VOASRV\HPCHEM1\MSVOA N\METHODS\624N110118W.M
 Quant Title : METHOD 624 VOLATILE ORGANIC ANALYSIS
 QLast Update : Fri Nov 02 05:39:38 2018
 Response via : Initial Calibration

Internal Standards	R.T.	QIon	Response	Conc	Units	Dev(Min)
1) Bromochloromethane	7.20	128	43445	30.00	ug/l	0.00
28) 1,4-Difluorobenzene	8.59	114	248021	30.00	ug/l	0.00
57) Chlorobenzene-d5	11.41	117	208475	30.00	ug/l	0.00

System Monitoring Compounds

27) 1,2-Dichloroethane-d4	8.03	65	115124	35.70	ug/l	0.00
Spiked Amount	30.000	Range	50 - 169	Recovery	=	119.00%
60) 4-Bromofluorobenzene	12.40	95	84668	25.39	ug/l	0.00
Spiked Amount	30.000	Range	56 - 143	Recovery	=	84.63%
63) Toluene-d8	10.09	98	296123	30.21	ug/l	0.00
Spiked Amount	30.000	Range	66 - 137	Recovery	=	100.70%

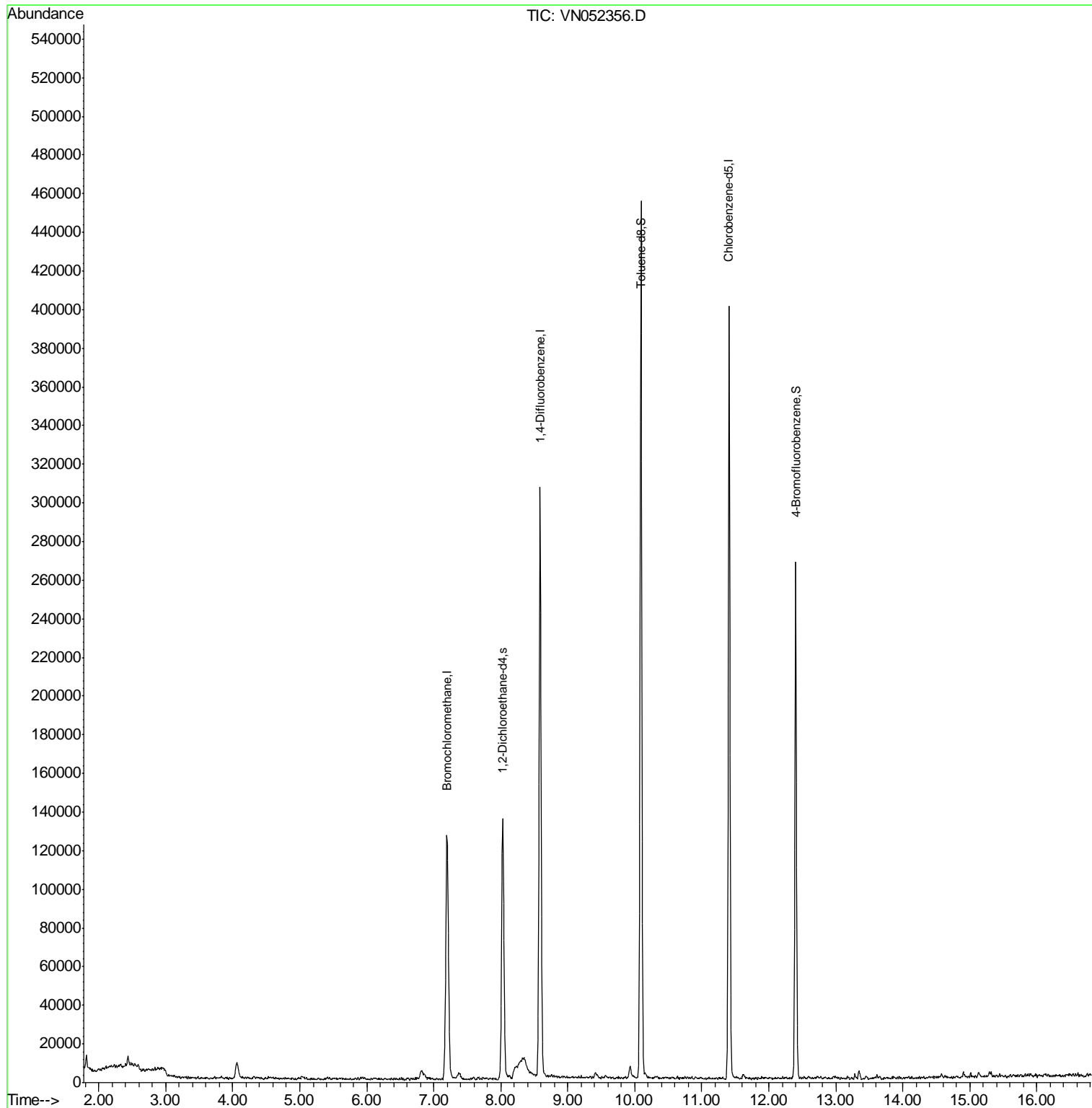
Target Compounds Ovalue

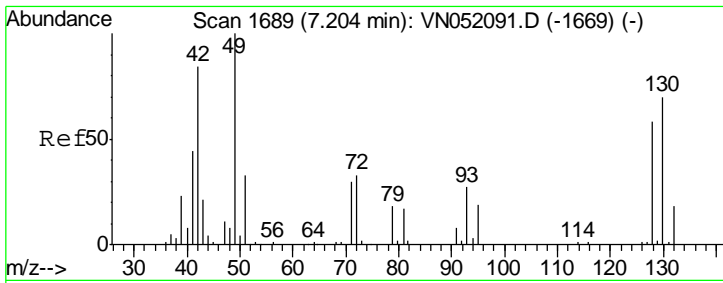
(#) = qualifier out of range (m) = manual integration (+) = signals summed

Data Path : Z:\VOASRV\HPCHEM1\MSVOA N\DATA\VN111618\
Data File : VN052356.D
Acq On : 16 Nov 2018 11:27
Operator : MD\SY
Sample : J5973-01
Misc : 5.00mL/MSVOA N/WATER
ALS Vial : 7 Sample Multiplier: 28

Instrument :
MSVOA_N
ClientSampled :
SPDES-1

Quant Time: Nov 19 13:44:27 2018
Quant Method : Z:\VOASRV\HPCHEM1\MSVOA N\METHODS\624N110118W.M
Quant Title : METHOD 624 VOLATILE ORGANIC ANALYSIS
QLast Update : Fri Nov 02 05:39:38 2018
Response via : Initial Calibration

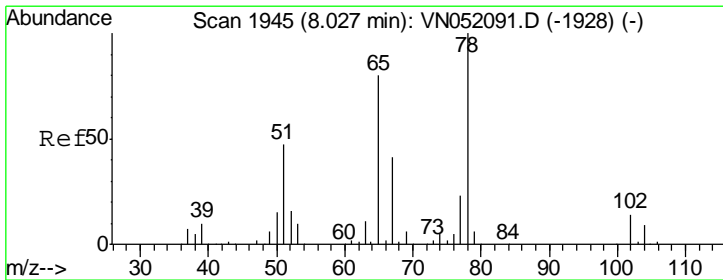
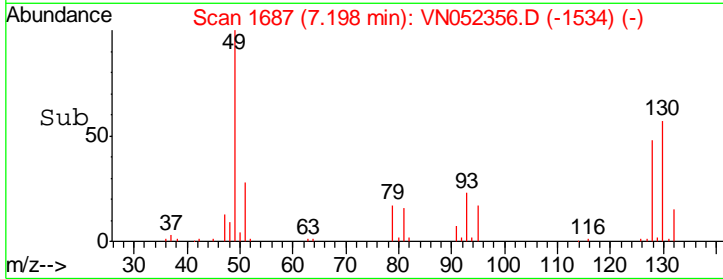
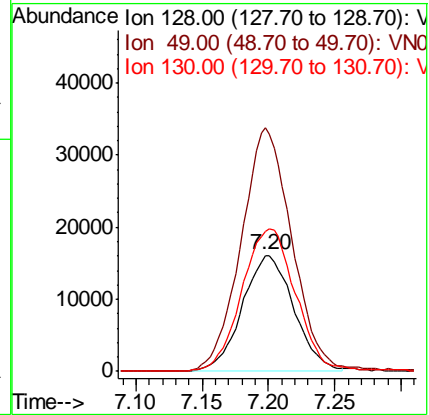
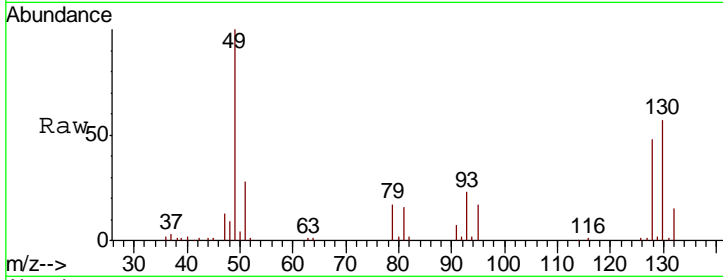




#1
 Bromochloromethane
 Concen: 30.000 ug/l
 RT: 7.20 min Scan# 1687
 Delta R.T. -0.01 min
 Lab File: VN052356.D
 Acq: 16 Nov 2018 11:27

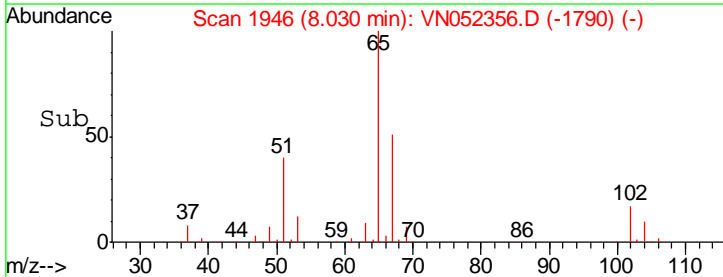
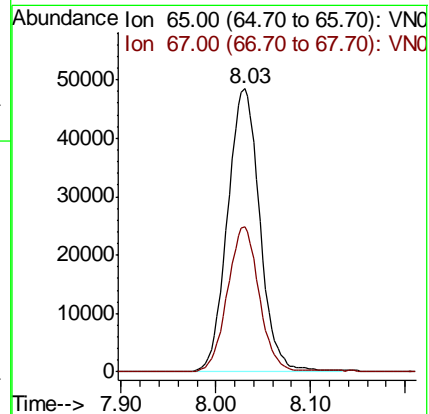
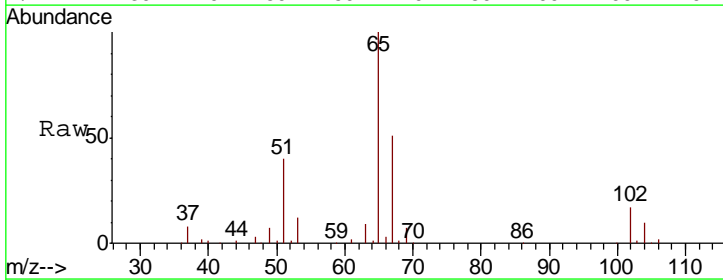
Instrument :
 MSVOA_N
 ClientSampled :
 SPDES-1

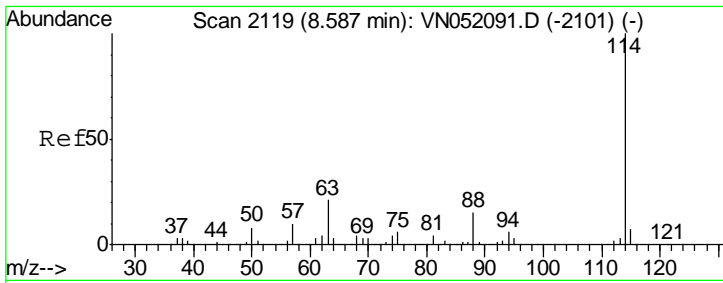
Tgt Ion	Resp	Lower	Upper
128	43445		
49	207.6	0.0	453.7
130	128.2	0.0	308.8



#27
 1,2-Dichloroethane-d4
 Concen: Below ug/l
 RT: 8.03 min Scan# 1946
 Delta R.T. 0.00 min
 Lab File: VN052356.D
 Acq: 16 Nov 2018 11:27

Tgt Ion	Resp	Lower	Upper
65	115124		
67	50.1	42.6	64.0

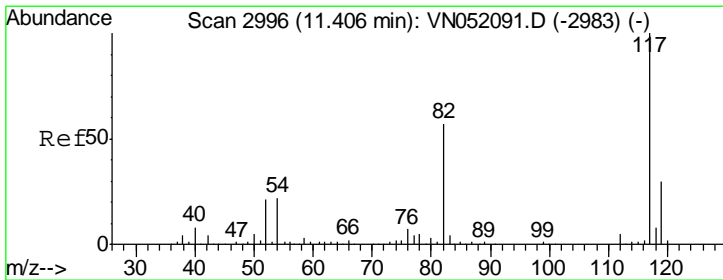
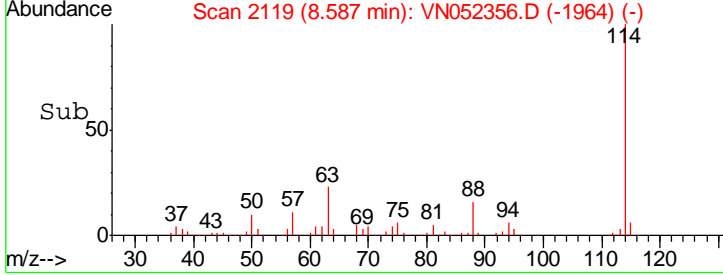
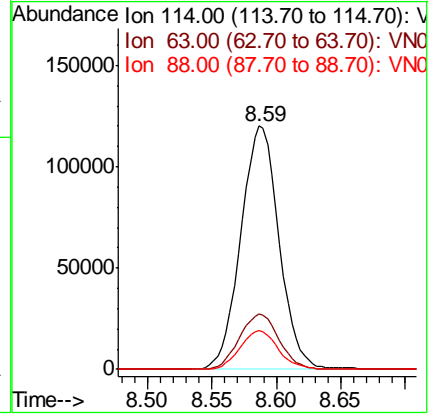
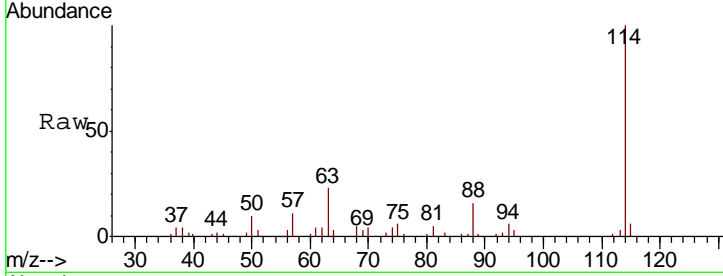




#28
 1,4-Difluorobenzene
 Concen: 30.000 ug/l
 RT: 8.59 min Scan# 2119
 Delta R.T. -0.00 min
 Lab File: VN052356.D
 Acq: 16 Nov 2018 11:27

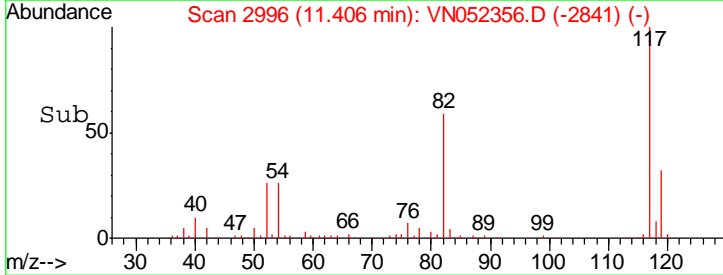
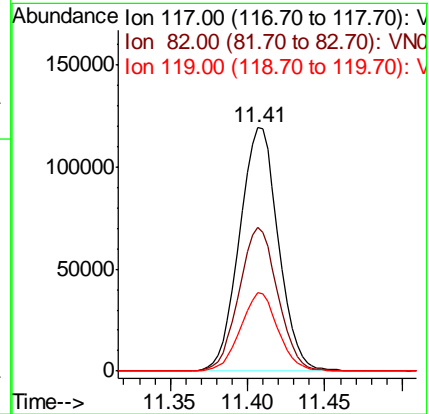
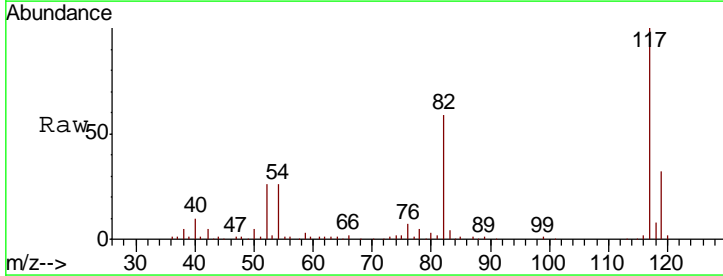
Instrument :
 MSVOA_N
 ClientSampled :
 SPDES-1

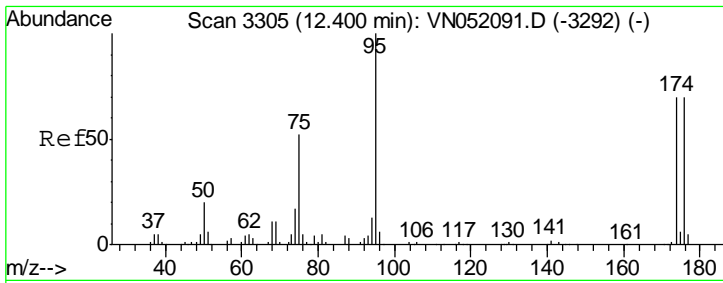
Tgt Ion	Resp	Lower	Upper
114	248021		
63	23.4	17.5	26.3
88	15.9	12.6	18.8



#57
 Chlorobenzene-d5
 Concen: 30.000 ug/l
 RT: 11.41 min Scan# 2996
 Delta R.T. -0.00 min
 Lab File: VN052356.D
 Acq: 16 Nov 2018 11:27

Tgt Ion	Resp	Lower	Upper
117	208475		
82	58.8	45.0	67.6
119	31.3	24.2	36.4

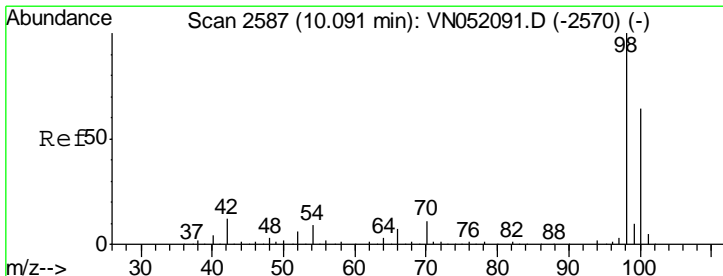
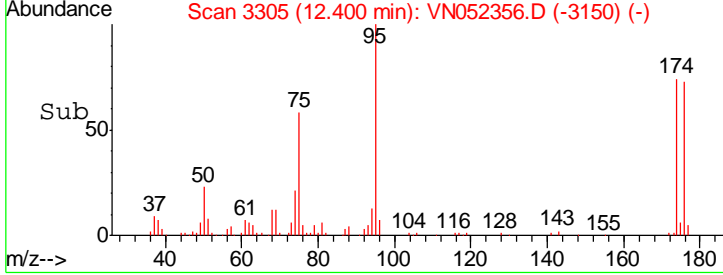
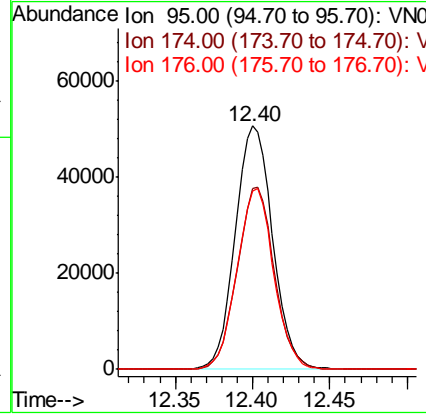
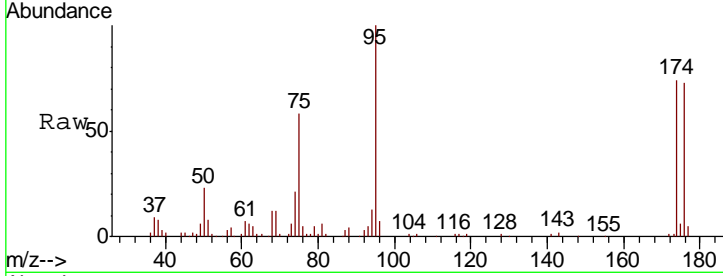




#60
 4-Bromofluorobenzene
 Concen: Below ug/l
 RT: 12.40 min Scan# 3305
 Delta R.T. -0.00 min
 Lab File: VN052356.D
 Acq: 16 Nov 2018 11:27

Instrument : MSVOA_N
 ClientSampled : SPDES-1

Tgt Ion	Resp	Lower	Upper
95	84668		
174	74.3	55.0	82.6
176	73.3	54.2	81.4



#63
 Toluene-d8
 Concen: Below ug/l
 RT: 10.09 min Scan# 2587
 Delta R.T. -0.00 min
 Lab File: VN052356.D
 Acq: 16 Nov 2018 11:27

Tgt Ion	Resp	Lower	Upper
98	296123		
100	62.8	50.7	76.1

