

Data Path : Z:\VOASRV\HPCHEM1\MSVOA N\DATA\VN111720\
 Data File : VN064696.D
 Acq On : 17 Nov 2020 21:31
 Operator : JC/MD
 Sample : L4783-03
 Misc : 5.00mL/MSVOA N/WATER
 ALS Vial : 27 Sample Multiplier: 1

Instrument :
 MSVOA_N
 ClientSampleId :
 MW-9

Quant Time: Nov 18 17:00:31 2020
 Quant Method : Z:\VOASRV\HPCHEM1\MSVOA_N\METHODS\82N110420W.M
 Quant Title : SW846 8260
 QLast Update : Wed Nov 04 12:09:03 2020
 Response via : Initial Calibration

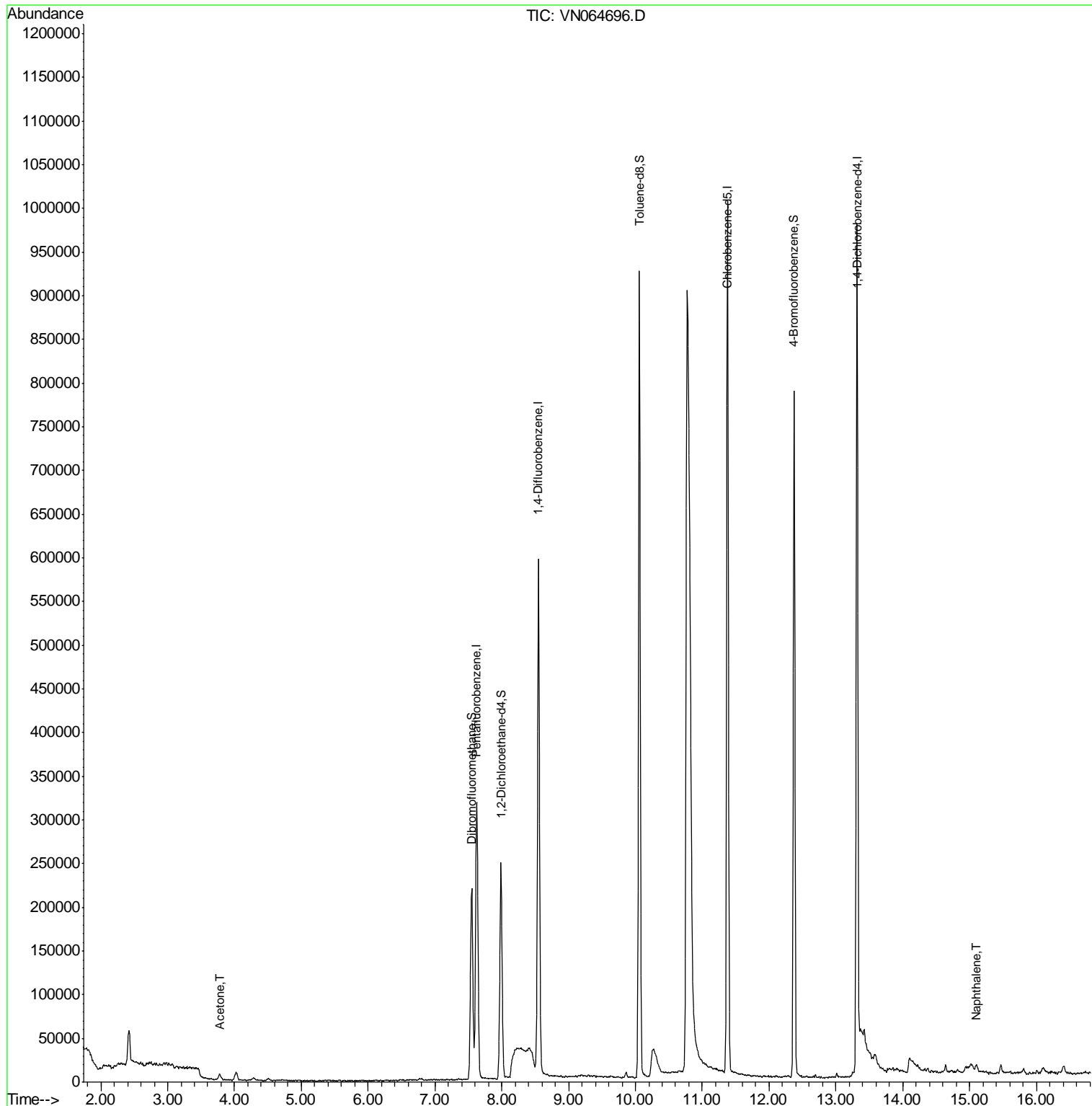
Internal Standards	R.T.	QIon	Response	Conc	Units	Dev(Min)
1) Pentafluorobenzene	7.63	168	221938	50.00	ug/l	0.00
34) 1,4-Difluorobenzene	8.55	114	480717	50.00	ug/l	0.00
63) Chlorobenzene-d5	11.38	117	531126	50.00	ug/l	0.00
72) 1,4-Dichlorobenzene-d4	13.32	152	227808	50.00	ug/l	0.00
System Monitoring Compounds						
33) 1,2-Dichloroethane-d4	7.99	65	224701	58.13	ug/l	0.00
Spiked Amount	50.000		Recovery	=	116.26%	
35) Dibromofluoromethane	7.55	113	163445	49.94	ug/l	0.00
Spiked Amount	50.000		Recovery	=	99.88%	
50) Toluene-d8	10.06	98	605807	47.89	ug/l	0.00
Spiked Amount	50.000		Recovery	=	95.78%	
62) 4-Bromofluorobenzene	12.37	95	256794	53.68	ug/l	0.00
Spiked Amount	50.000		Recovery	=	107.36%	
Target Compounds						
16) Acetone	3.78	43	9473	6.433	ug/l	97
95) Naphthalene	15.10	128	4772	3.977	ug/l #	86

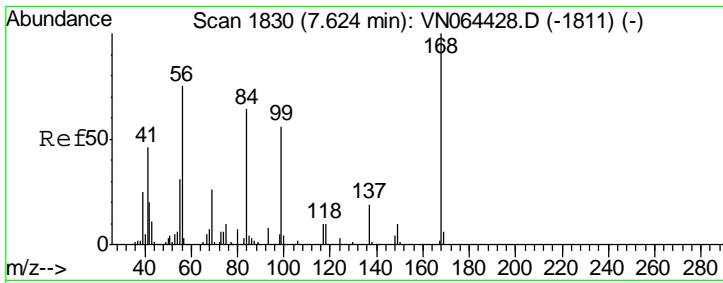
(#) = qualifier out of range (m) = manual integration (+) = signals summed

Data Path : Z:\VOASRV\HPCHEM1\MSVOA N\DATA\VN111720\
 Data File : VN064696.D
 Acq On : 17 Nov 2020 21:31
 Operator : JC/MD
 Sample : L4783-03
 Misc : 5.00mL/MSVOA N/WATER
 ALS Vial : 27 Sample Multiplier: 1

Instrument :
 MSVOA_N
Client Sampled :
 MW-9

Quant Time: Nov 18 17:00:31 2020
 Quant Method : Z:\VOASRV\HPCHEM1\MSVOA_N\METHODS\82N110420W.M
 Quant Title : SW846 8260
 QLast Update : Wed Nov 04 12:09:03 2020
 Response via : Initial Calibration

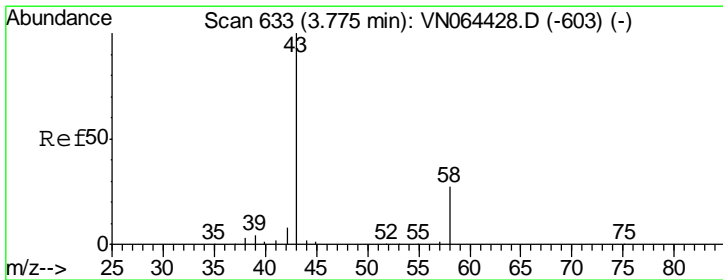
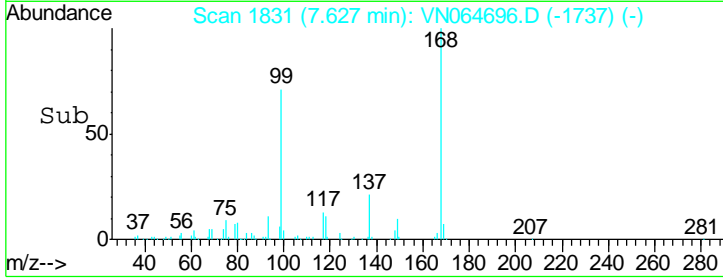
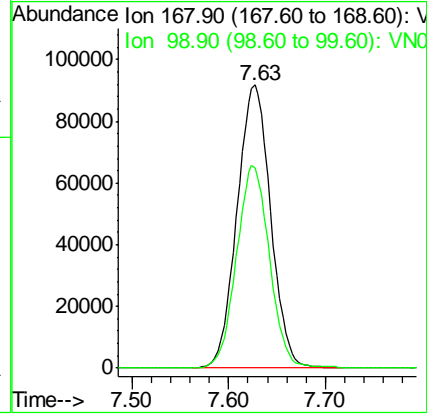
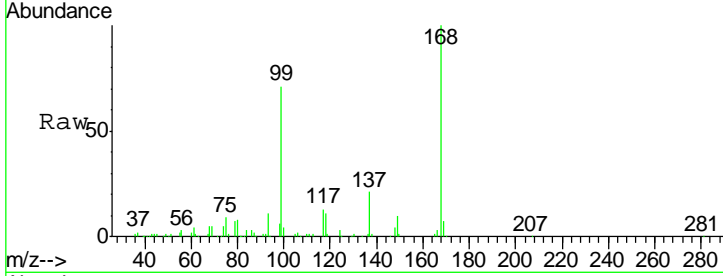




#1
 Pentafluorobenzene
 Concen: 50.000 ug/l
 RT: 7.63 min Scan# 1831
 Delta R.T. 0.00 min
 Lab File: VN064696.D
 Acq: 17 Nov 2020 21:31

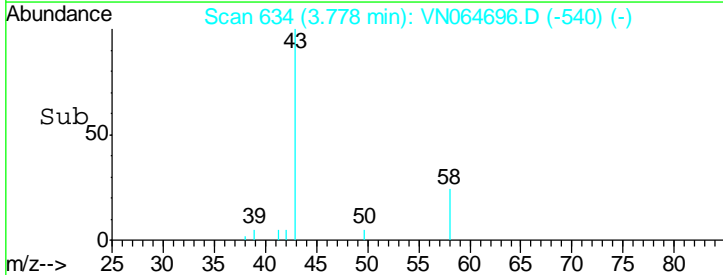
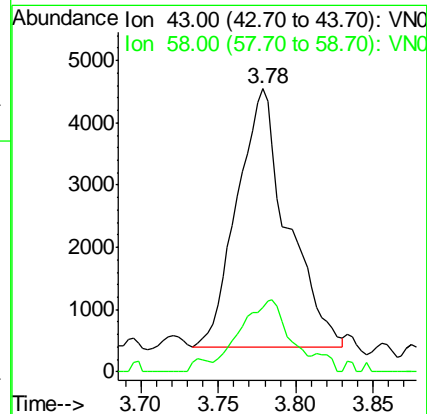
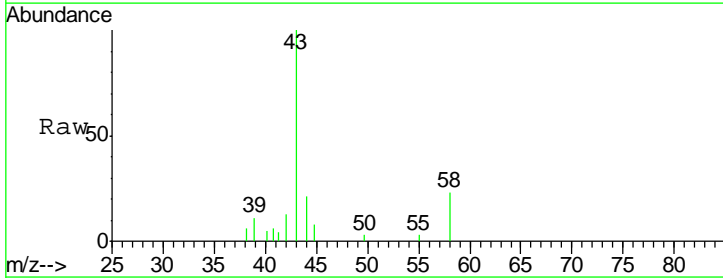
Instrument :
 MSVOA_N
 ClientSampled :
 MW-9

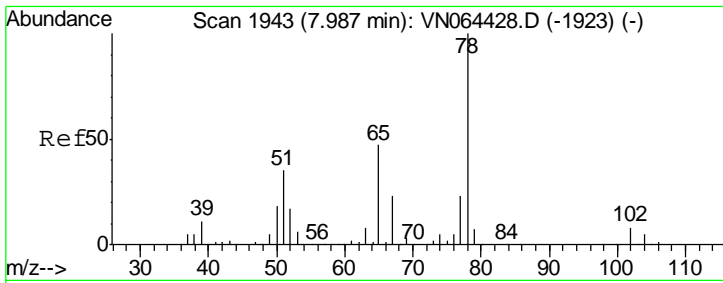
Tgt Ion: 168 Resp: 221938
 Ion Ratio Lower Upper
 168 100
 99 70.7 53.4 80.2



#16
 Acetone
 Concen: 6.433 ug/l
 RT: 3.78 min Scan# 634
 Delta R.T. 0.00 min
 Lab File: VN064696.D
 Acq: 17 Nov 2020 21:31

Tgt Ion: 43 Resp: 9473
 Ion Ratio Lower Upper
 43 100
 58 25.0 21.4 32.0

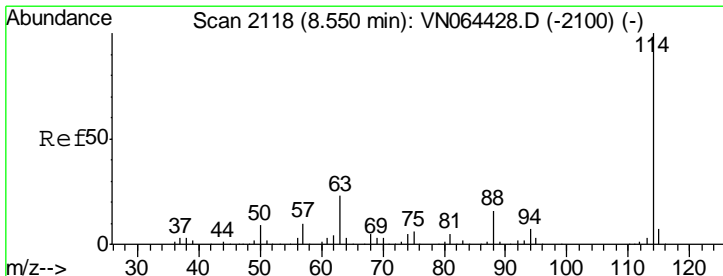
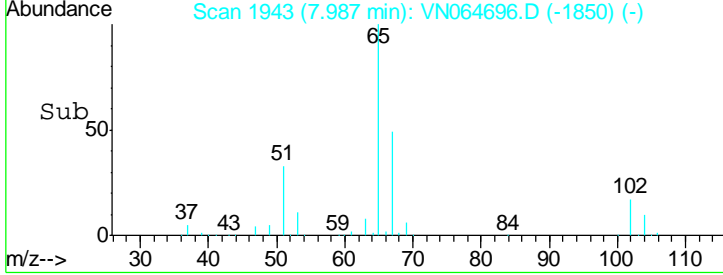
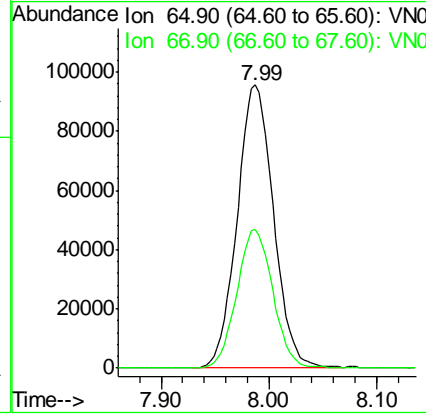
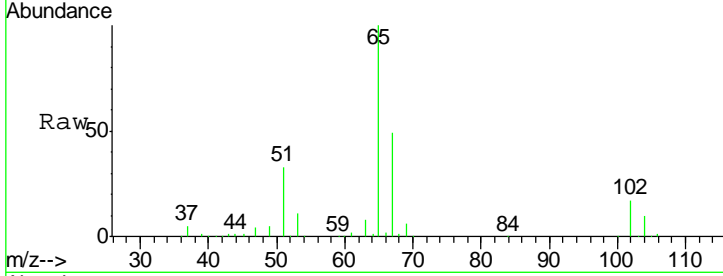




#33
 1,2-Dichloroethane-d4
 Concen: 58.125 ug/l
 RT: 7.99 min Scan# 1943
 Delta R.T. -0.00 min
 Lab File: VN064696.D
 Acq: 17 Nov 2020 21:31

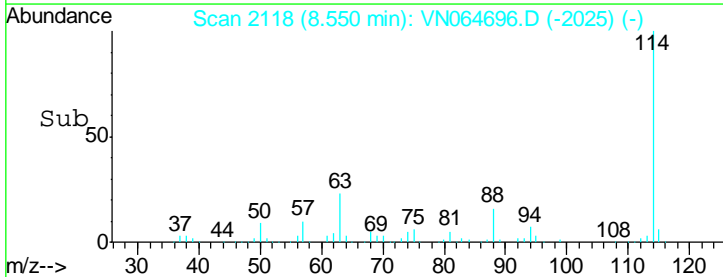
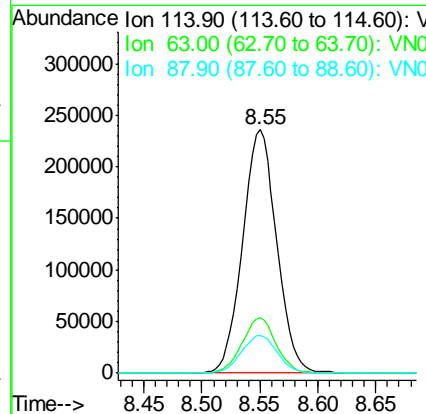
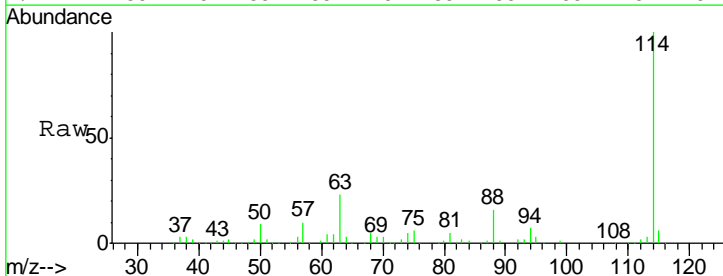
Instrument : MSVOA_N
 ClientSampled : MW-9

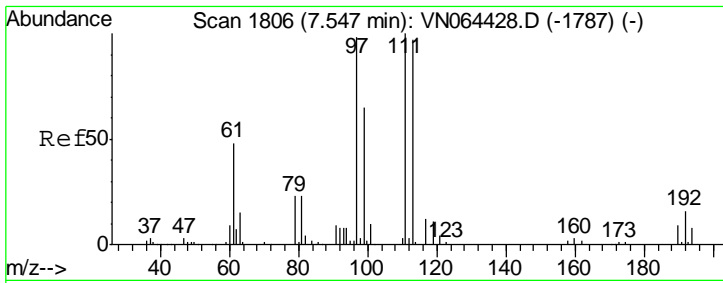
Tgt Ion	Resp	Lower	Upper
65	100		
67	48.5	0.0	101.6



#34
 1,4-Difluorobenzene
 Concen: 50.000 ug/l
 RT: 8.55 min Scan# 2118
 Delta R.T. -0.00 min
 Lab File: VN064696.D
 Acq: 17 Nov 2020 21:31

Tgt Ion	Resp	Lower	Upper
114	100		
63	22.7	0.0	45.6
88	15.5	0.0	32.8

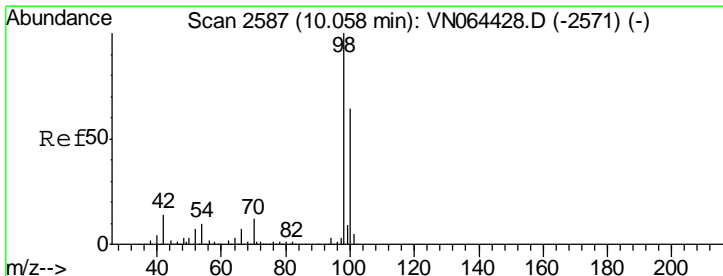
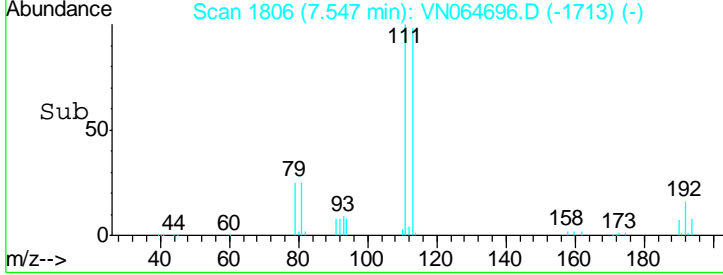
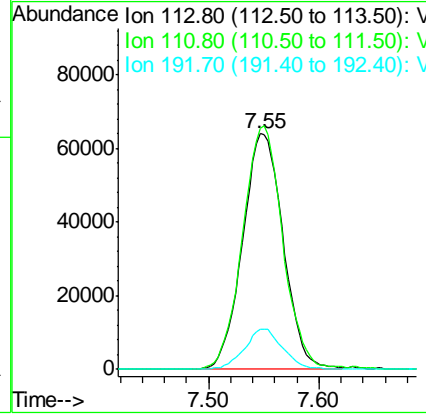
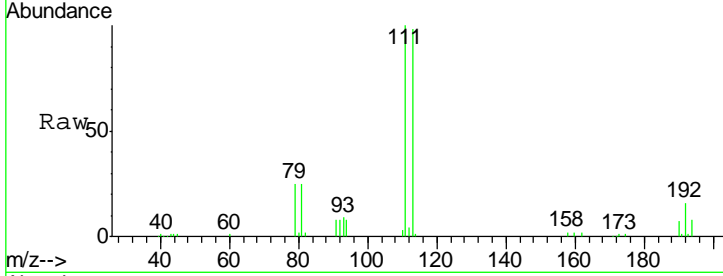




#35
 Dibromofluoromethane
 Concen: 49.937 ug/l
 RT: 7.55 min Scan# 1806
 Delta R.T. -0.00 min
 Lab File: VN064696.D
 Acq: 17 Nov 2020 21:31

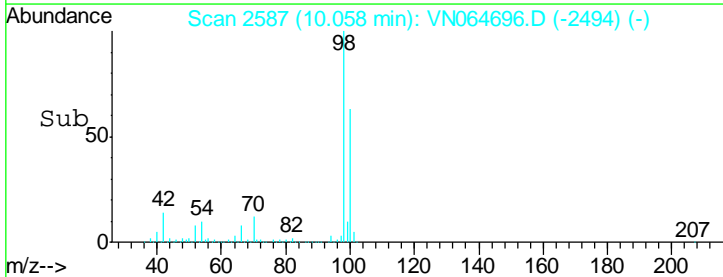
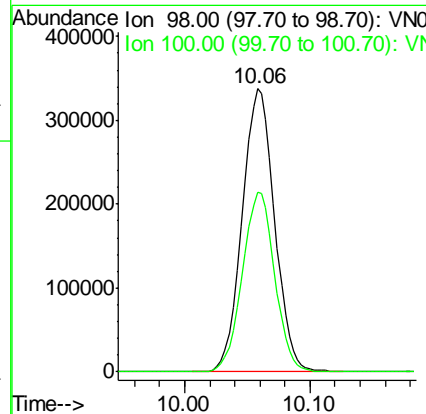
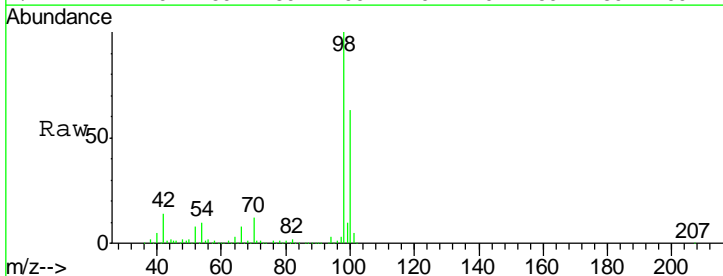
Instrument :
 MSVOA_N
 ClientSampled :
 MW-9

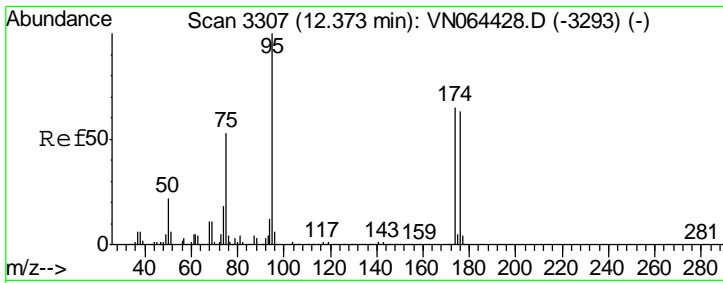
Tgt Ion	Resp	Lower	Upper
113	100		
111	102.0	81.1	121.7
192	16.1	12.8	19.2



#50
 Toluene-d8
 Concen: 47.889 ug/l
 RT: 10.06 min Scan# 2587
 Delta R.T. -0.00 min
 Lab File: VN064696.D
 Acq: 17 Nov 2020 21:31

Tgt Ion	Resp	Lower	Upper
98	100		
100	63.2	50.7	76.1

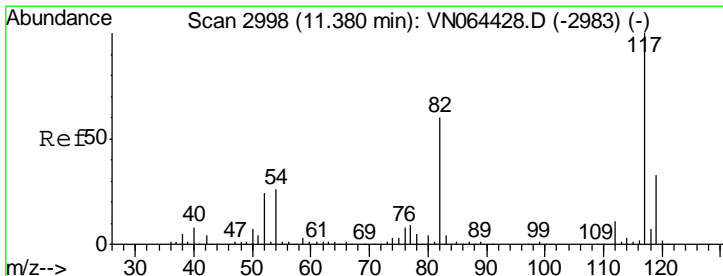
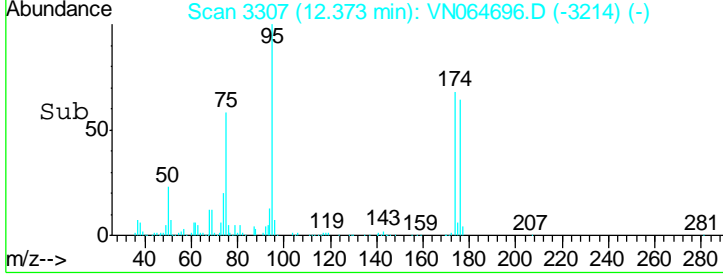
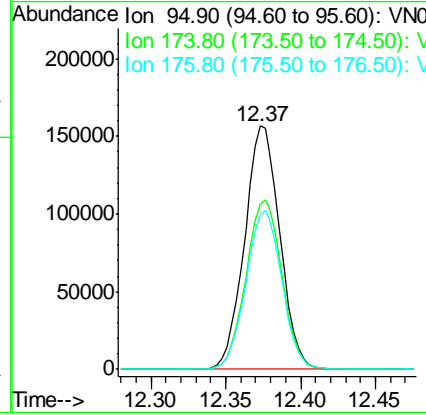
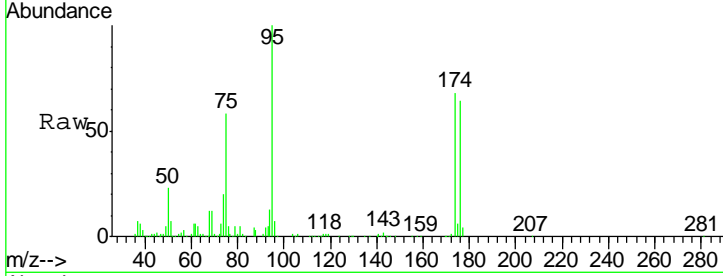




#62
 4-Bromofluorobenzene
 Concen: 53.676 ug/l
 RT: 12.37 min Scan# 3307
 Delta R.T. -0.00 min
 Lab File: VN064696.D
 Acq: 17 Nov 2020 21:31

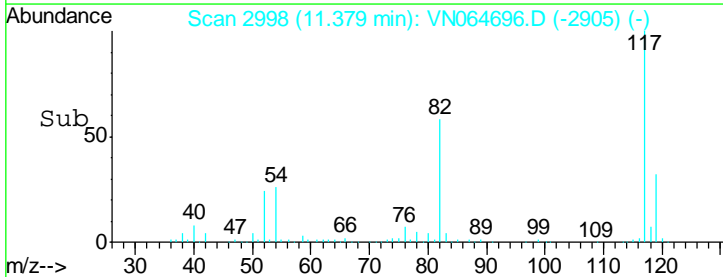
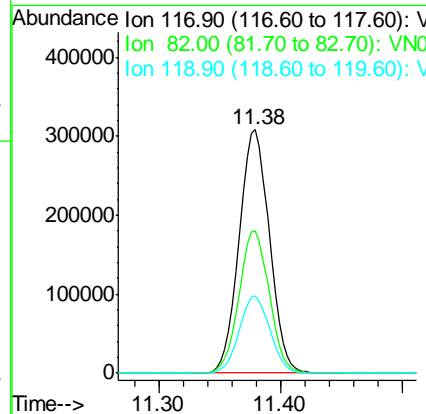
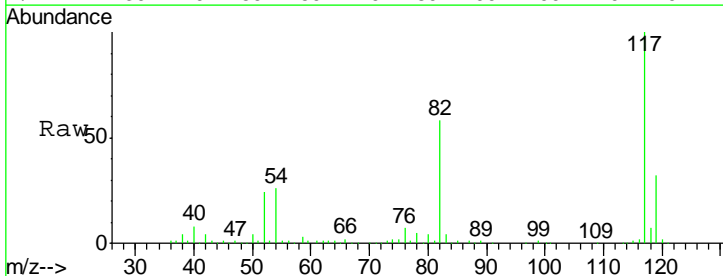
Instrument :
 MSVOA_N
 ClientSampled :
 MW-9

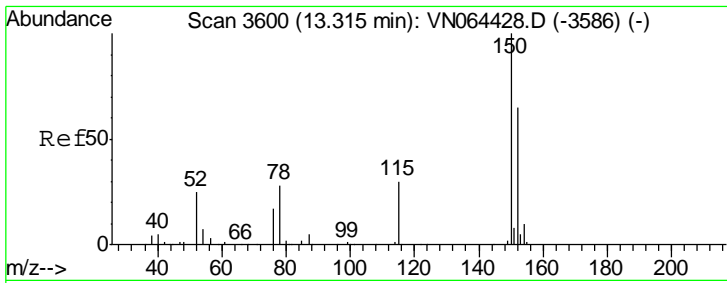
Tgt Ion	Resp	Lower	Upper
95	256794		
174	71.2	0.0	132.6
176	66.5	0.0	129.2



#63
 Chlorobenzene-d5
 Concen: 50.000 ug/l
 RT: 11.38 min Scan# 2998
 Delta R.T. -0.00 min
 Lab File: VN064696.D
 Acq: 17 Nov 2020 21:31

Tgt Ion	Resp	Lower	Upper
117	531126		
82	58.4	48.1	72.1
119	31.9	26.2	39.4

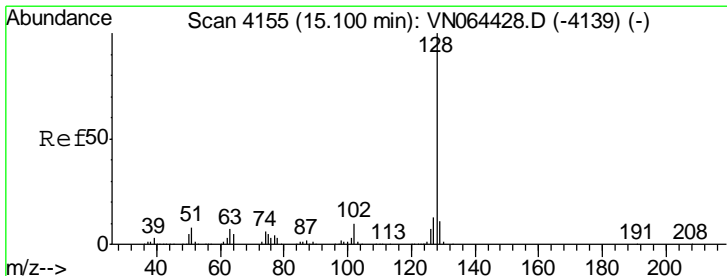
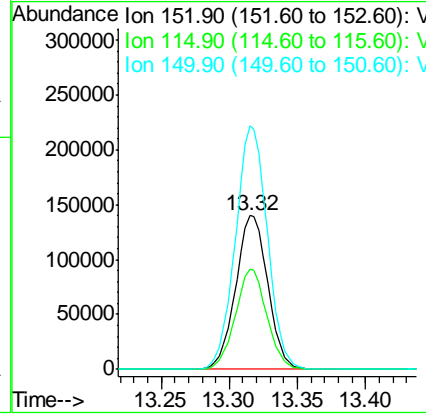
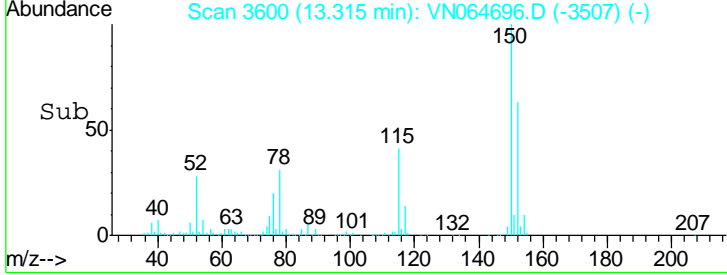
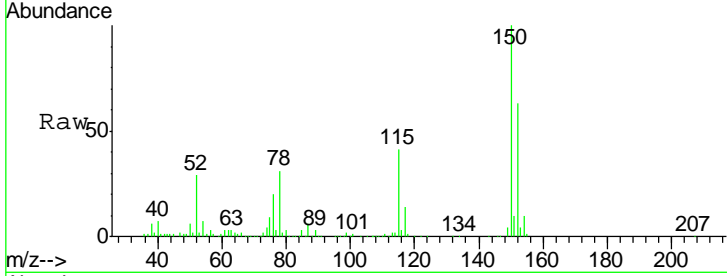




#72
 1,4-Dichlorobenzene-d4
 Concen: 50.000 ug/l
 RT: 13.32 min Scan# 3600
 Delta R.T. -0.00 min
 Lab File: VN064696.D
 Acq: 17 Nov 2020 21:31

Instrument :
 MSVOA_N
 ClientSampled :
 MW-9

Tgt Ion	Resp	Lower	Upper
152	100		
115	64.0	32.0	96.0
150	158.1	0.0	353.8



#95
 Naphthalene
 Concen: 3.977 ug/l
 RT: 15.10 min Scan# 4155
 Delta R.T. 0.00 min
 Lab File: VN064696.D
 Acq: 17 Nov 2020 21:31

Tgt Ion	Resp	Lower	Upper
128	100		
127	19.4	10.5	15.7#
129	15.6	8.8	13.2#

