

Data Path : Z:\VOASRV\HPCHEM1\MSVOA N\DATA\VN111819\  
 Data File : VN059288.D  
 Acq On : 18 Nov 2019 16:50  
 Operator : JC/SP  
 Sample : K5900-06 5X  
 Misc : 5.00mL/MSVOA N/WATER  
 ALS Vial : 17 Sample Multiplier: 1

Instrument :  
 MSVOA\_N  
 ClientSampled :

Quant Time: Nov 19 00:49:21 2019  
 Quant Method : Z:\VOASRV\HPCHEM1\MSVOA\_N\METHODS\82N110619W.M  
 Quant Title : SW846 8260  
 QLast Update : Thu Nov 07 04:00:41 2019  
 Response via : Initial Calibration

Internal Standards	R.T.	QIon	Response	Conc	Units	Dev(Min)
1) Pentafluorobenzene	7.65	168	474883	50.00	ug/l	0.00
34) 1,4-Difluorobenzene	8.57	114	743119	50.00	ug/l	0.00
63) Chlorobenzene-d5	11.40	117	659241	50.00	ug/l	0.00
72) 1,4-Dichlorobenzene-d4	13.35	152	314799	50.00	ug/l	0.00

System Monitoring Compounds

33) 1,2-Dichloroethane-d4	8.01	65	274205	46.97	ug/l	0.00
Spiked Amount	50.000		Recovery	=	93.94%	
35) Dibromofluoromethane	7.57	113	224696	50.64	ug/l	0.00
Spiked Amount	50.000		Recovery	=	101.28%	
50) Toluene-d8	10.08	98	914786	52.34	ug/l	0.00
Spiked Amount	50.000		Recovery	=	104.68%	
62) 4-Bromofluorobenzene	12.40	95	337779	53.60	ug/l	0.00
Spiked Amount	50.000		Recovery	=	107.20%	

Target Compounds

						Qvalue
8) Diethyl Ether	3.39	74	1676	0.547	ug/l	99
11) Tert butyl alcohol	4.75	59	343424	308.694	ug/l	98
16) Acetone	3.79	43	490576	161.606	ug/l	98
17) Carbon Disulfide	4.02	76	6596	0.480	ug/l	100
18) Methyl Acetate	4.30	43	71668	9.946	ug/l	97
19) Methyl tert-butyl Ether	5.01	73	71011	4.656	ug/l	91
20) Methylene Chloride	4.52	84	3300	0.624	ug/l #	83
22) Diisopropyl ether	5.92	45	469003	27.287	ug/l #	1
23) Vinyl Acetate	5.92	43	31382	2.356	ug/l #	80
24) 1,1-Dichloroethane	5.93	63	3273	0.341	ug/l #	85
25) 2-Butanone	6.81	43	249508	62.365	ug/l	99
26) 2,2-Dichloropropane	6.80	77	3534	0.421	ug/l #	53
29) Tetrahydrofuran	7.20	42	18016	7.087	ug/l	98
30) Chloroform	7.36	83	3588	0.390	ug/l	93
31) Cyclohexane	7.64	56	15728	1.731	ug/l #	6
36) 1,1-Dichloropropene	7.65	75	35686	5.138	ug/l #	49
37) Ethyl Acetate	6.81	43	249508	32.290	ug/l #	69
38) Carbon Tetrachloride	7.64	117	45134	6.528	ug/l #	17
39) Methylcyclohexane	9.07	83	8668	1.075	ug/l	95
40) Benzene	8.02	78	1523227	72.823	ug/l	99
41) Methacrylonitrile	7.19	41	10113	3.010	ug/l #	100
42) 1,2-Dichloroethane	8.02	62	12303	1.715	ug/l	80
43) Isopropyl Acetate	8.27	43	29963	2.432	ug/l #	55
48) Methyl methacrylate	9.15	41	125897	22.848	ug/l #	39
49) 1,4-Dioxane	9.18	88	19893	203.143	ug/l #	21
51) 4-Methyl-2-Pentanone	9.97	43	154586	22.177	ug/l	98
52) Toluene	10.15	92	833230	66.462	ug/l	98
53) t-1,3-Dichloropropene	10.45	75	3822	0.468	ug/l #	58
56) Ethyl methacrylate	10.35	69	27708	5.025	ug/l #	80
58) 2-Chloroethyl Vinyl ether	9.80	63	706	0.250	ug/l #	50
59) 2-Hexanone	10.75	43	53179	9.940	ug/l	83
67) Ethyl Benzene	11.51	91	305661	13.406	ug/l	99
68) m/p-Xylenes	11.62	106	626384	73.339	ug/l	100
69) o-Xylene	11.95	106	307020	37.197	ug/l	99

Data Path : Z:\VOASRV\HPCHEM1\MSVOA N\DATA\VN111819\  
 Data File : VN059288.D  
 Acq On : 18 Nov 2019 16:50  
 Operator : JC/SP  
 Sample : K5900-06 5X  
 Misc : 5.00mL/MSVOA N/WATER  
 ALS Vial : 17 Sample Multiplier: 1

Instrument :  
 MSVOA\_N  
 ClientSampleId :

Quant Time: Nov 19 00:49:21 2019  
 Quant Method : Z:\VOASRV\HPCHEM1\MSVOA\_N\METHODS\82N110619W.M  
 Quant Title : SW846 8260  
 QLast Update : Thu Nov 07 04:00:41 2019  
 Response via : Initial Calibration

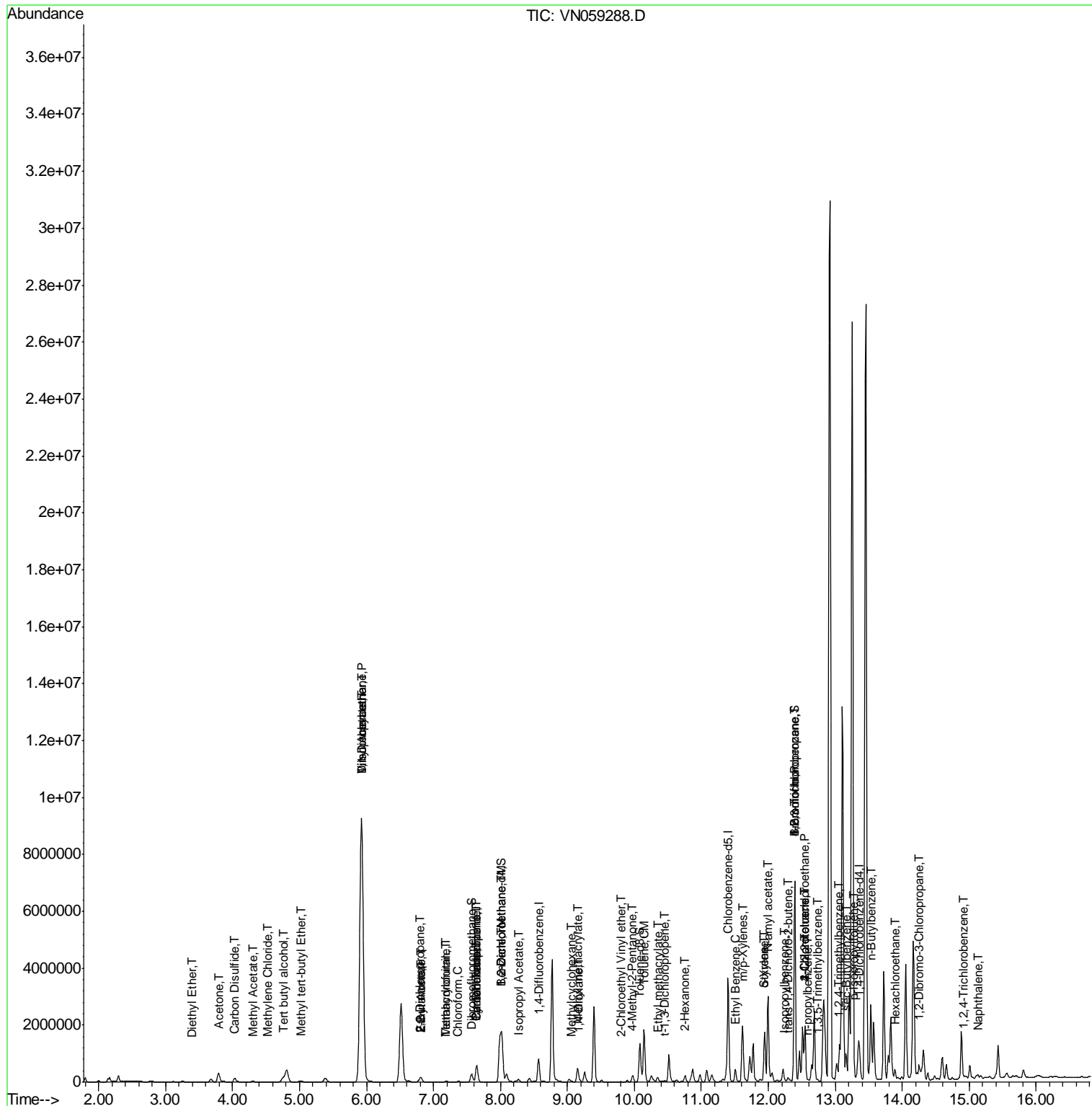
Internal Standards	R.T.	QIon	Response	Conc	Units	Dev(Min)
70) Styrene	11.94	104	15379	1.185	ug/l #	1
71) Bromoform	12.40	173	930	0.248	ug/l #	1
73) Isopropylbenzene	12.25	105	13913	0.608	ug/l	97
74) N-amyl acetate	11.99	43	577394	59.507	ug/l #	1
75) 1,1,2,2-Tetrachloroethane	12.55	83	161306	20.685	ug/l #	25
76) 1,2,3-Trichloropropane	12.40	75	162032	22.608	ug/l #	100
78) n-propylbenzene	12.59	91	10723	0.409	ug/l	94
79) 2-Chlorotoluene	12.55	91	5233	0.322	ug/l	99
80) 1,3,5-Trimethylbenzene	12.73	105	32499	1.675	ug/l	98
81) trans-1,4-Dichloro-2-buten	12.30	75	7216	2.659	ug/l #	13
82) 4-Chlorotoluene	12.55	91	5233	0.321	ug/l	97
84) 1,2,4-Trimethylbenzene	13.04	105	133988	7.137	ug/l	84
85) sec-Butylbenzene	13.17	105	6214	0.285	ug/l	95
86) p-Isopropyltoluene	13.29	119	5530	0.287	ug/l #	77
89) n-Butylbenzene	13.54	91	9456	0.561	ug/l	72
90) Hexachloroethane	13.89	117	19013	4.921	ug/l #	8
92) 1,2-Dibromo-3-Chloropropan	14.25	75	1141	0.759	ug/l #	3
93) 1,2,4-Trichlorobenzene	14.92	180	743	3.165	ug/l #	65
95) Naphthalene	15.13	128	95363	8.535	ug/l #	92

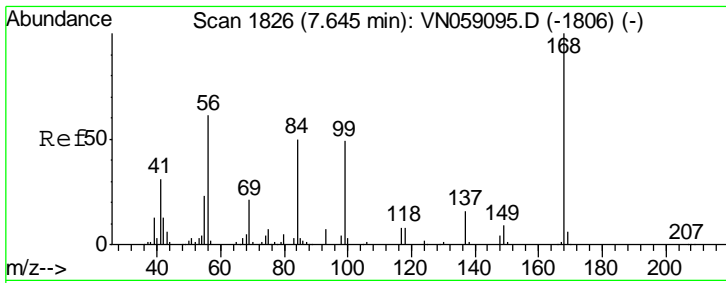
(#) = qualifier out of range (m) = manual integration (+) = signals summed

Data Path : Z:\VOASRV\HPCHEM1\MSVOA N\DATA\VN111819\  
 Data File : VN059288.D  
 Acq On : 18 Nov 2019 16:50  
 Operator : JC/SP  
 Sample : K5900-06 5X  
 Misc : 5.00mL/MSVOA N/WATER  
 ALS Vial : 17 Sample Multiplier: 1

Instrument :  
 MSVOA\_N  
 Client Sampled :

Quant Time: Nov 19 00:49:21 2019  
 Quant Method : Z:\VOASRV\HPCHEM1\MSVOA\_N\METHODS\82N110619W.M  
 Quant Title : SW846 8260  
 QLast Update : Thu Nov 07 04:00:41 2019  
 Response via : Initial Calibration

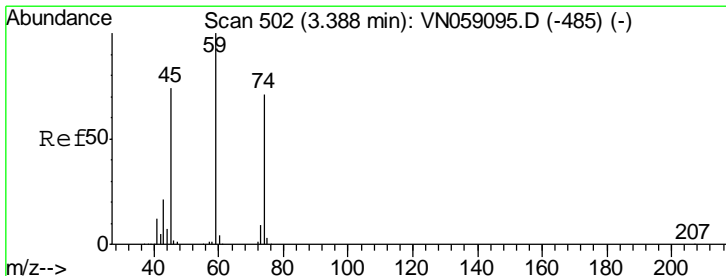
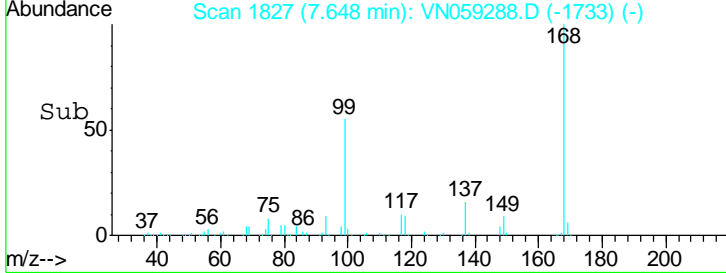
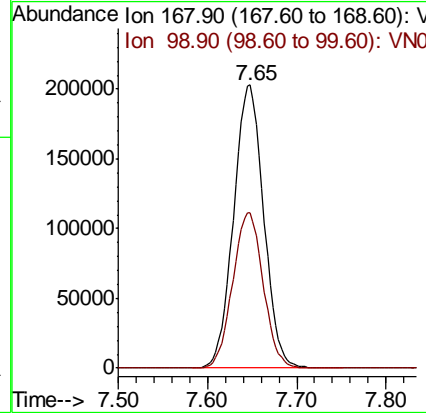
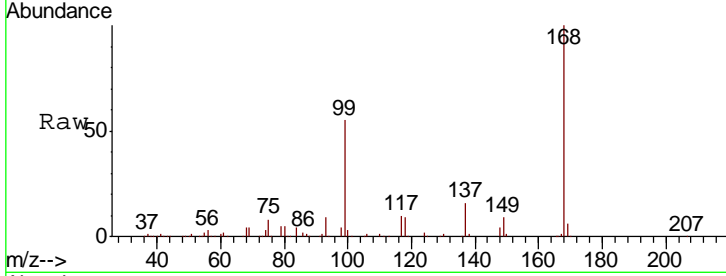




#1  
 Pentafluorobenzene  
 Concen: 50.000 ug/l  
 RT: 7.65 min Scan# 1827  
 Delta R.T. 0.00 min  
 Lab File: VN059288.D  
 Acq: 18 Nov 2019 16:50

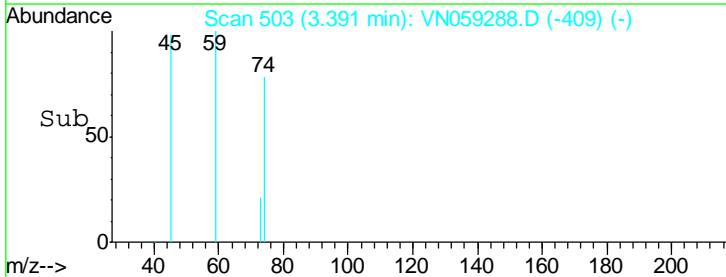
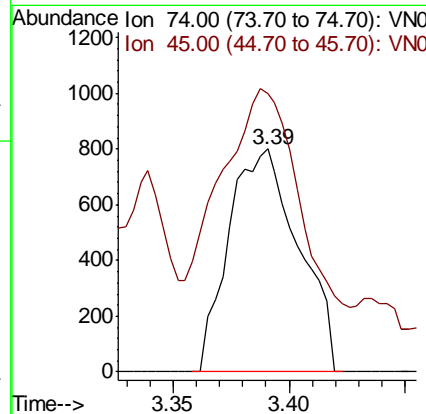
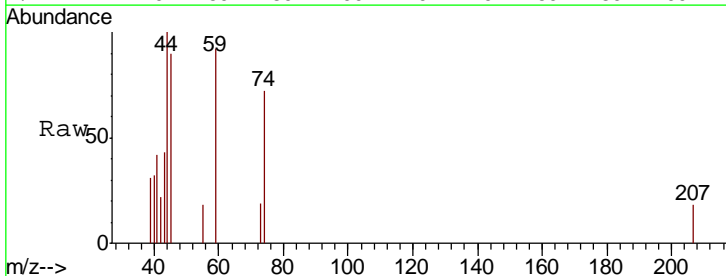
Instrument :  
 MSVOA\_N  
 ClientSampled :

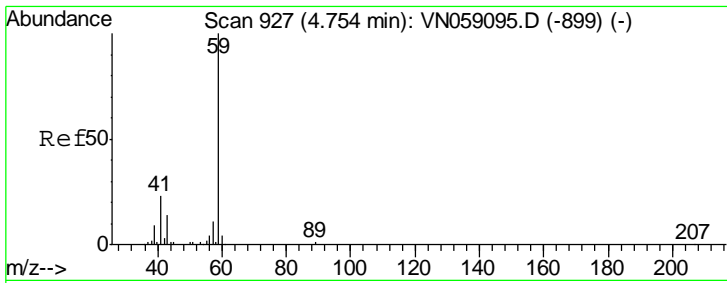
Tgt Ion: 168 Resp: 474883  
 Ion Ratio Lower Upper  
 168 100  
 99 54.7 45.7 68.5



#8  
 Diethyl Ether  
 Concen: 0.547 ug/l  
 RT: 3.39 min Scan# 503  
 Delta R.T. 0.00 min  
 Lab File: VN059288.D  
 Acq: 18 Nov 2019 16:50

Tgt Ion: 74 Resp: 1676  
 Ion Ratio Lower Upper  
 74 100  
 45 102.4 51.6 154.9

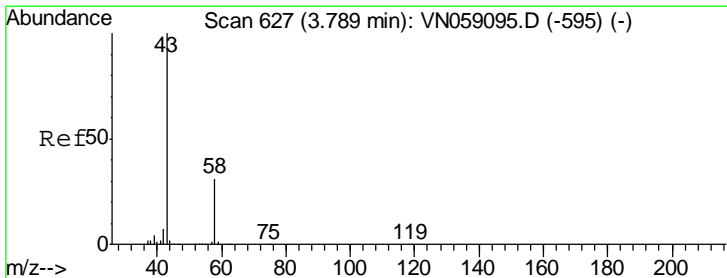
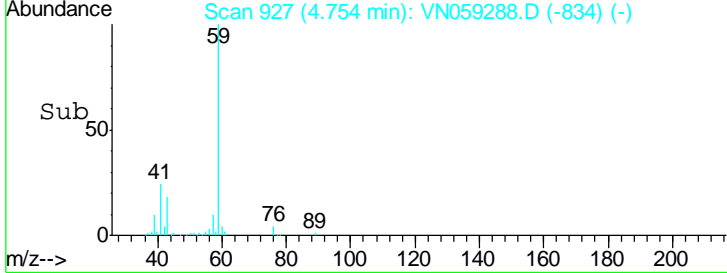
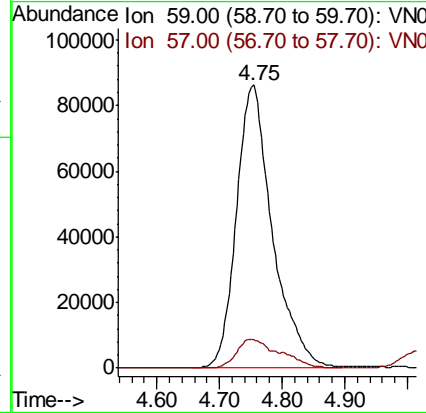
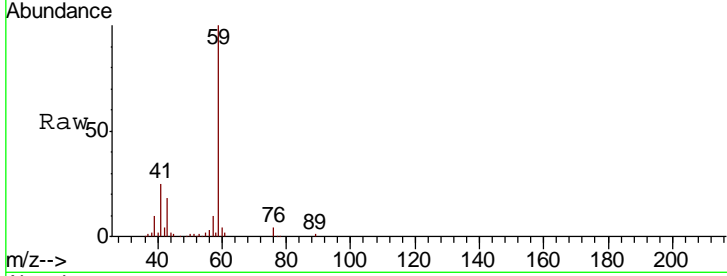




#11  
 Tert butyl alcohol  
 Concen: 308.694 ug/l  
 RT: 4.75 min Scan# 927  
 Delta R.T. -0.00 min  
 Lab File: VN059288.D  
 Acq: 18 Nov 2019 16:50

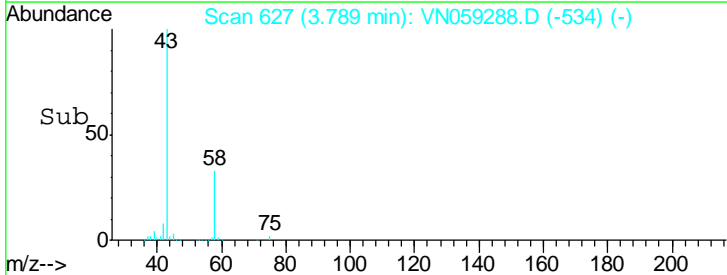
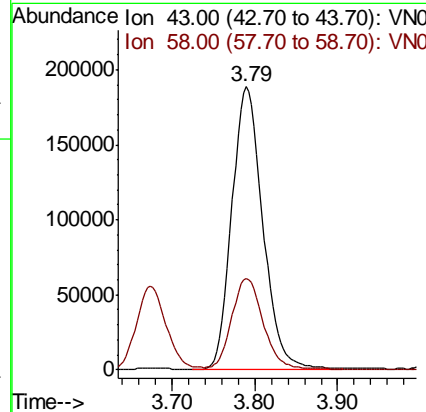
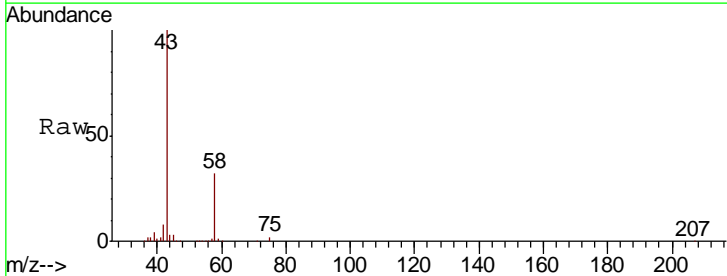
Instrument :  
 MSVOA\_N  
 ClientSampled :

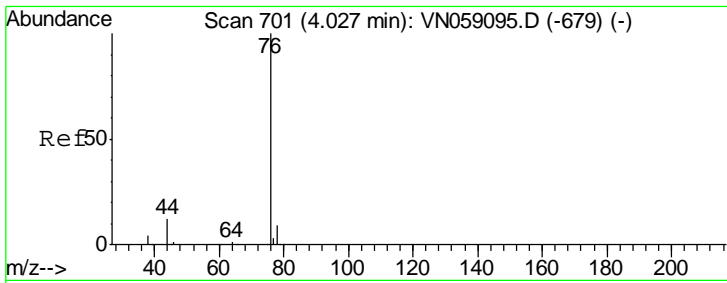
Tgt Ion	Resp	Lower	Upper
59	100		
57	9.5	8.3	12.5



#16  
 Acetone  
 Concen: 161.606 ug/l  
 RT: 3.79 min Scan# 627  
 Delta R.T. -0.00 min  
 Lab File: VN059288.D  
 Acq: 18 Nov 2019 16:50

Tgt Ion	Resp	Lower	Upper
43	100		
58	32.2	24.9	37.3

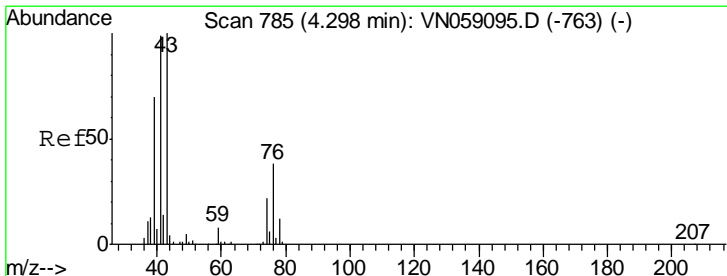
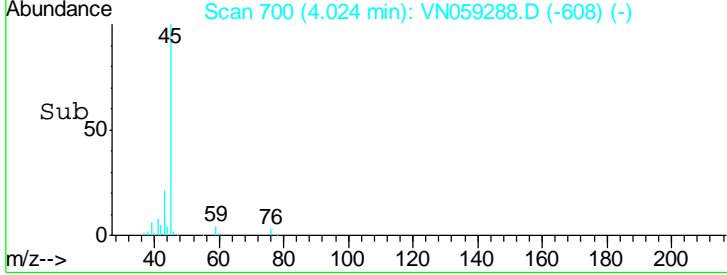
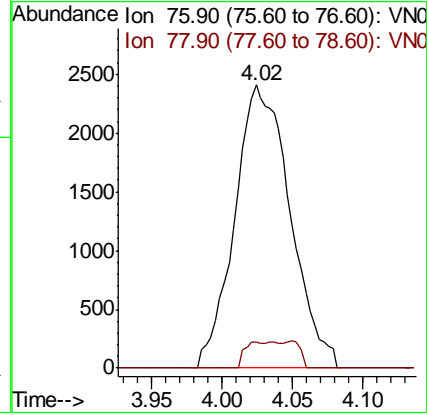
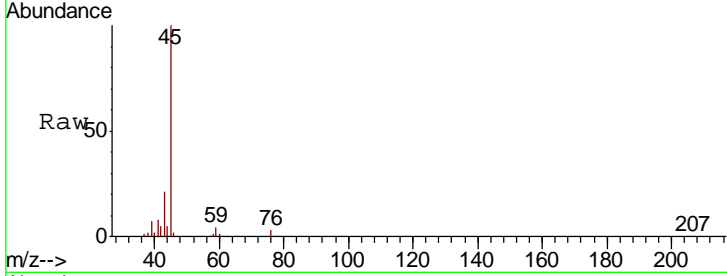




#17  
 Carbon Disulfide  
 Concen: 0.480 ug/l  
 RT: 4.02 min Scan# 700  
 Delta R.T. -0.00 min  
 Lab File: VN059288.D  
 Acq: 18 Nov 2019 16:50

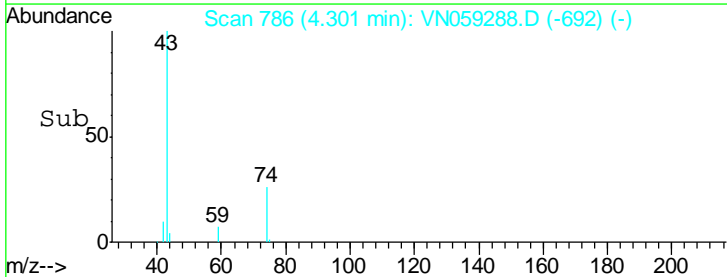
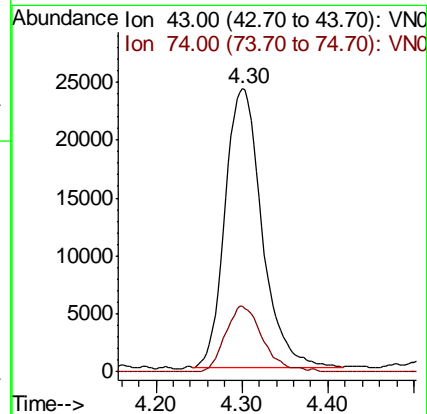
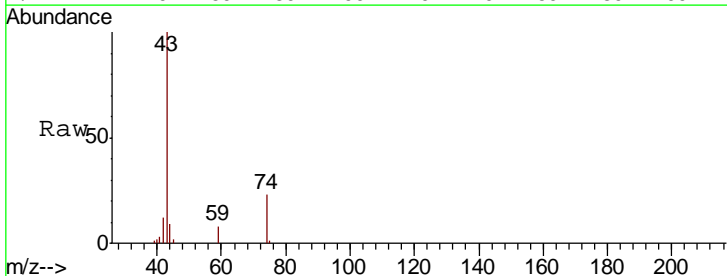
Instrument :  
 MSVOA\_N  
 ClientSampled :

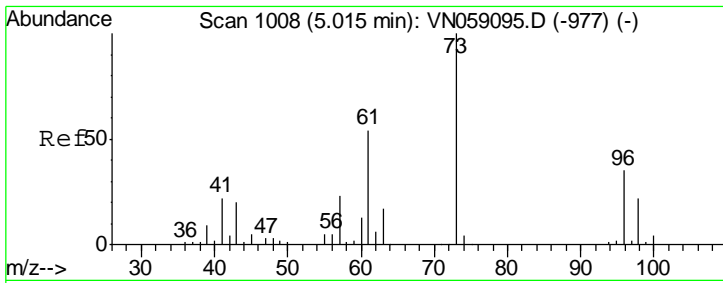
Tgt Ion	Resp	Lower	Upper
76	100		
78	9.3	7.4	11.0



#18  
 Methyl Acetate  
 Concen: 9.946 ug/l  
 RT: 4.30 min Scan# 786  
 Delta R.T. 0.00 min  
 Lab File: VN059288.D  
 Acq: 18 Nov 2019 16:50

Tgt Ion	Resp	Lower	Upper
43	100		
74	23.8	17.8	26.8

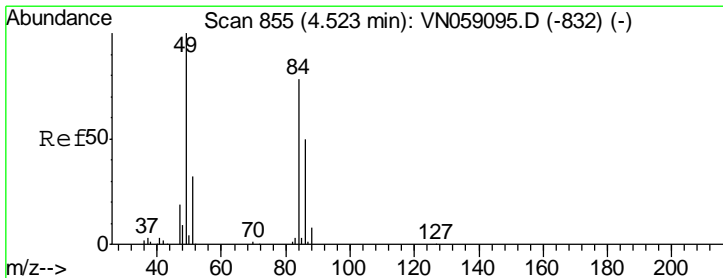
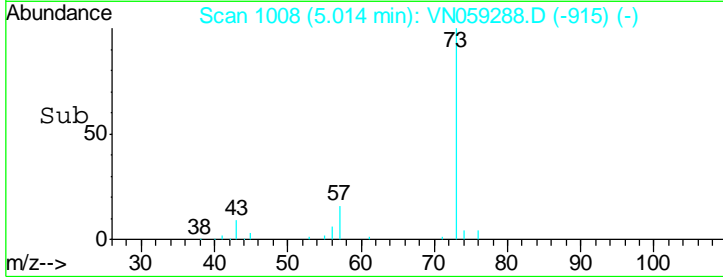
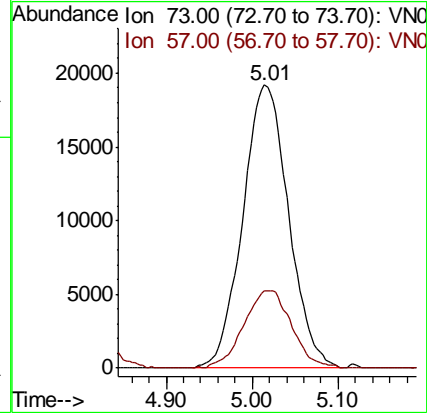
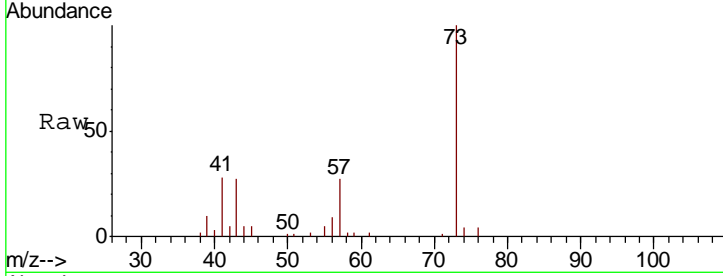




#19  
Methyl tert-butyl Ether  
Concen: 4.656 ug/l  
RT: 5.01 min Scan# 1008  
Delta R.T. -0.00 min  
Lab File: VN059288.D  
Acq: 18 Nov 2019 16:50

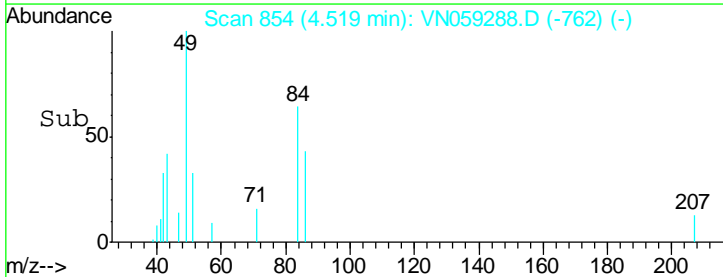
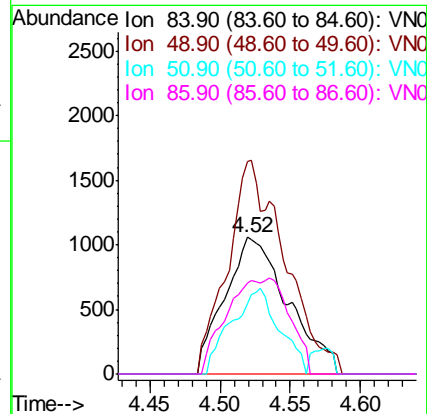
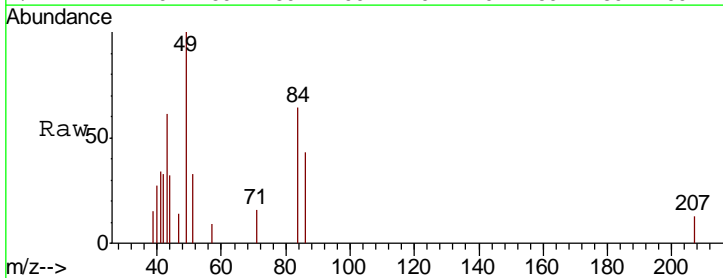
Instrument :  
MSVOA\_N  
ClientSampled :

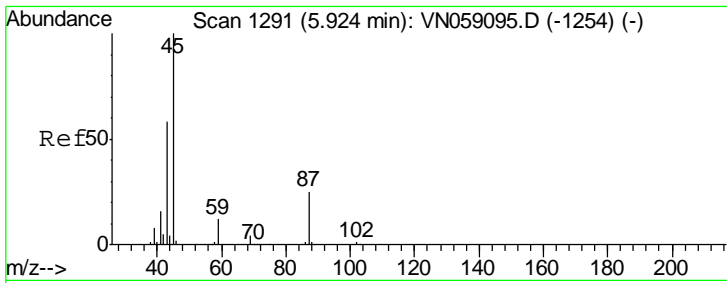
Tgt Ion: 73 Resp: 71011  
Ion Ratio Lower Upper  
73 100  
57 27.3 18.4 27.6



#20  
Methylene Chloride  
Concen: 0.624 ug/l  
RT: 4.52 min Scan# 854  
Delta R.T. -0.00 min  
Lab File: VN059288.D  
Acq: 18 Nov 2019 16:50

Tgt Ion: 84 Resp: 3300  
Ion Ratio Lower Upper  
84 100  
49 155.2 102.0 153.0#  
51 51.6 32.2 48.2#  
86 66.2 50.7 76.1

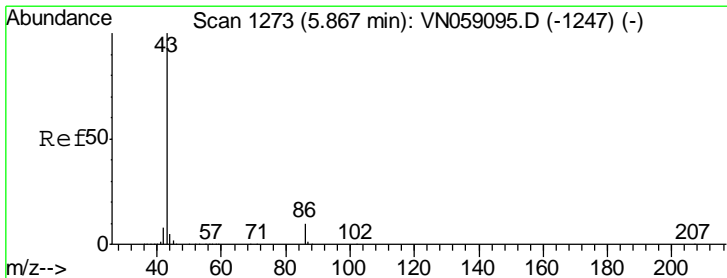
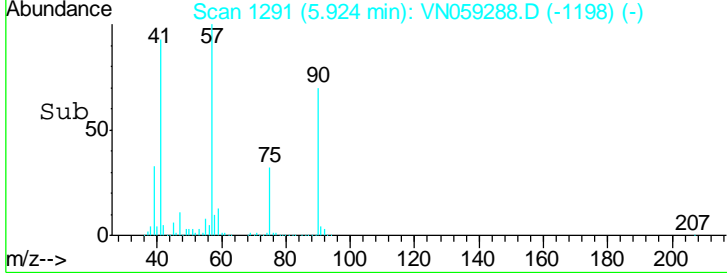
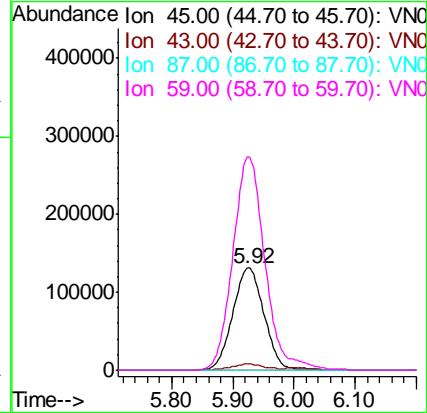
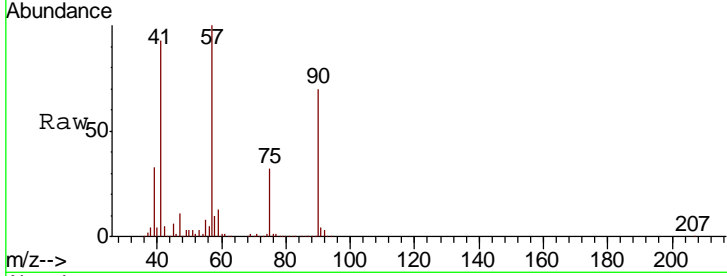




#22  
 Diisopropyl ether  
 Concen: 27.287 ug/l  
 RT: 5.92 min Scan# 1291  
 Delta R.T. -0.00 min  
 Lab File: VN059288.D  
 Acq: 18 Nov 2019 16:50

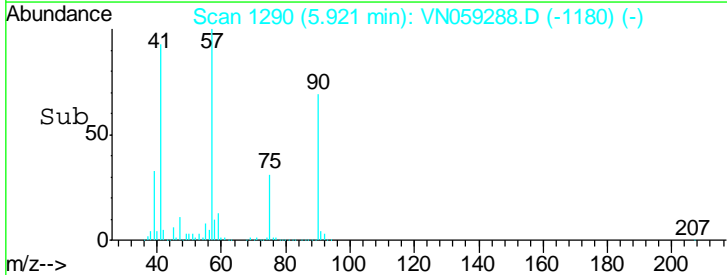
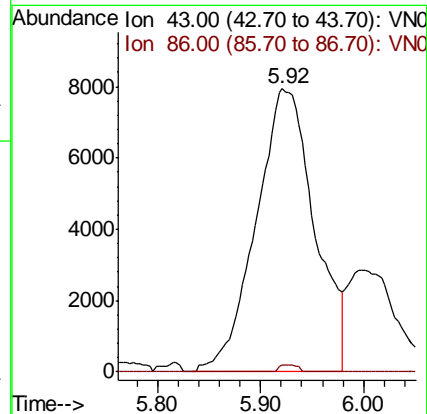
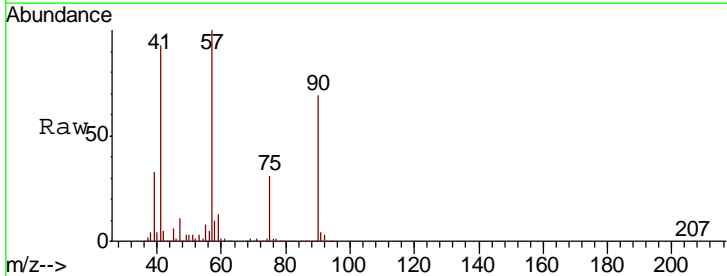
Instrument :  
 MSVOA\_N  
 ClientSampled :

Tgt Ion	Resp	Lower	Upper
45	469003		
43	6.0	46.7	70.1#
87	0.4	20.5	30.7#
59	208.5	9.6	14.4#

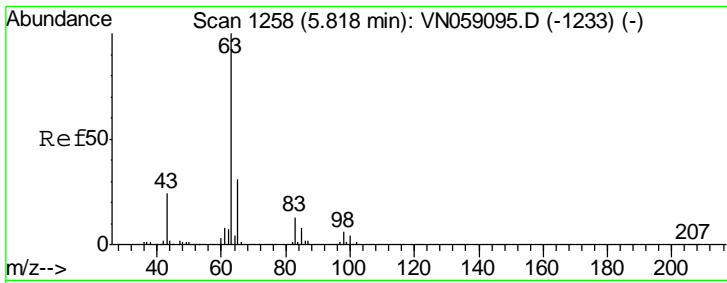


#23  
 Vinyl Acetate  
 Concen: 2.356 ug/l  
 RT: 5.92 min Scan# 1290  
 Delta R.T. 0.05 min  
 Lab File: VN059288.D  
 Acq: 18 Nov 2019 16:50

Tgt Ion	Resp	Lower	Upper
43	31382		
43	100		
86	2.4	7.7	11.5#



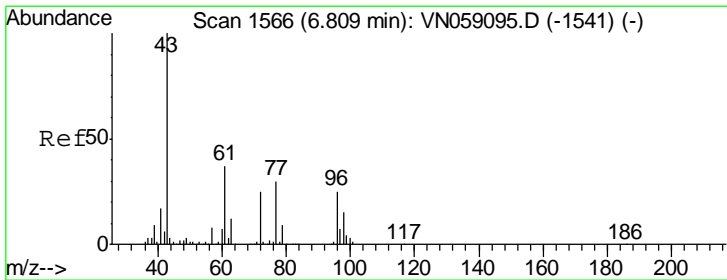
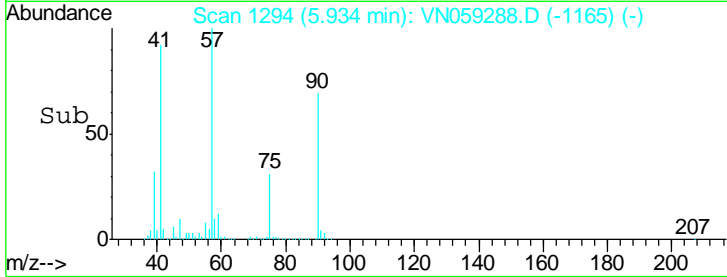
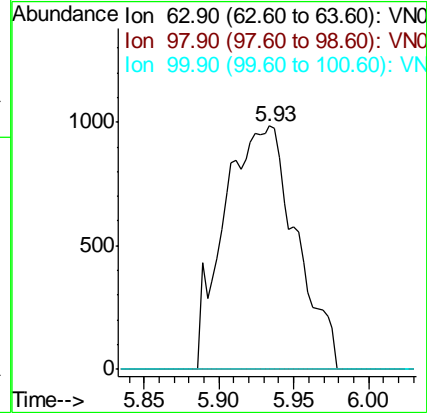
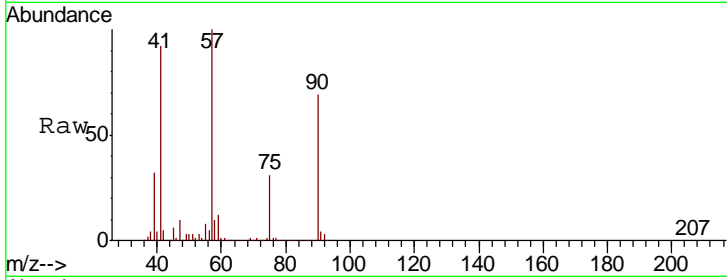




#24  
 1,1-Dichloroethane  
 Concen: 0.341 ug/l  
 RT: 5.93 min Scan# 1294  
 Delta R.T. 0.12 min  
 Lab File: VN059288.D  
 Acq: 18 Nov 2019 16:50

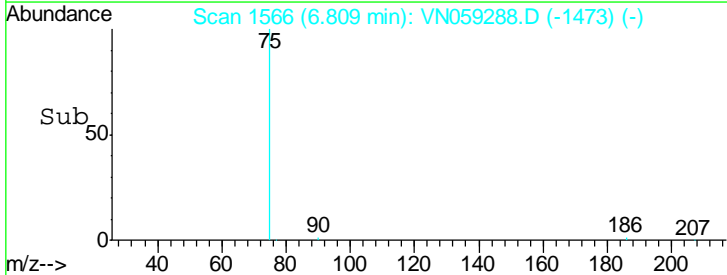
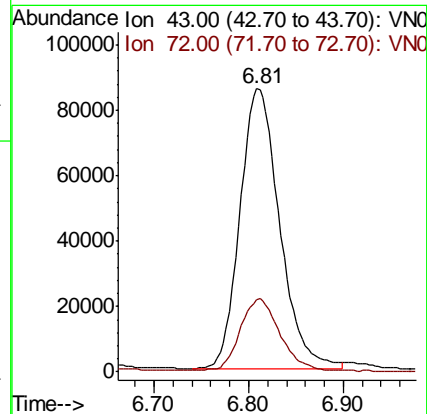
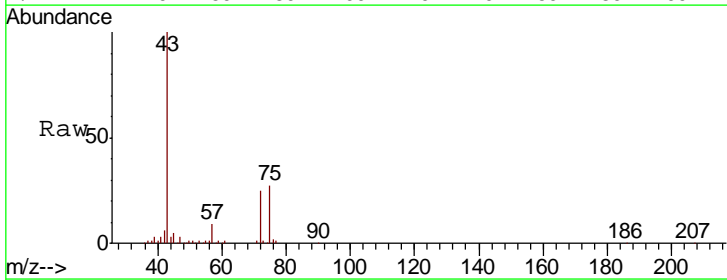
Instrument :  
 MSVOA\_N  
 ClientSampled :

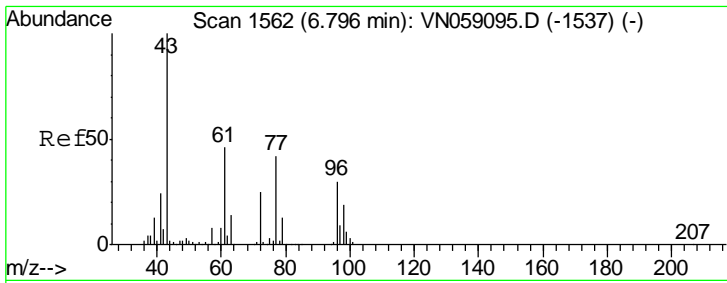
Tgt Ion	Resp	Lower	Upper
63	100		
98	0.0	2.8	8.4#
100	0.0	1.9	5.7#



#25  
 2-Butanone  
 Concen: 62.365 ug/l  
 RT: 6.81 min Scan# 1566  
 Delta R.T. -0.00 min  
 Lab File: VN059288.D  
 Acq: 18 Nov 2019 16:50

Tgt Ion	Resp	Lower	Upper
43	100		
72	25.1	20.3	30.5

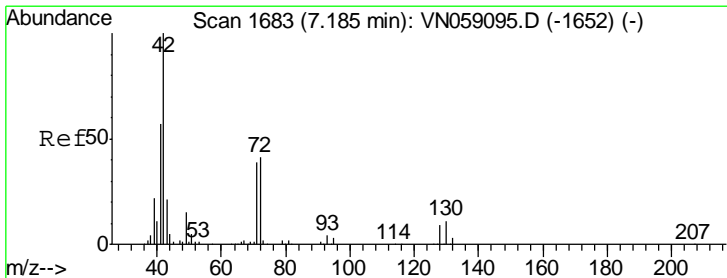
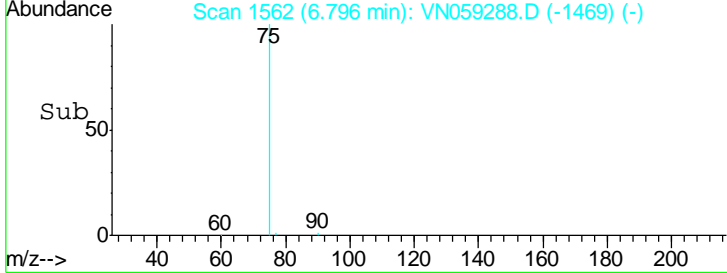
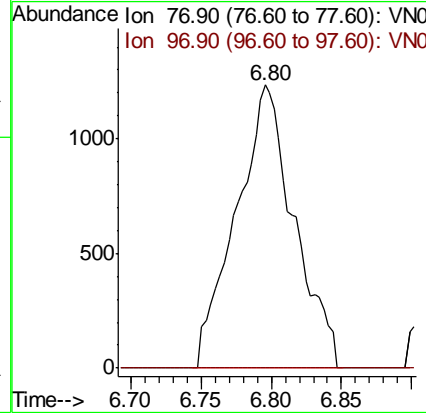
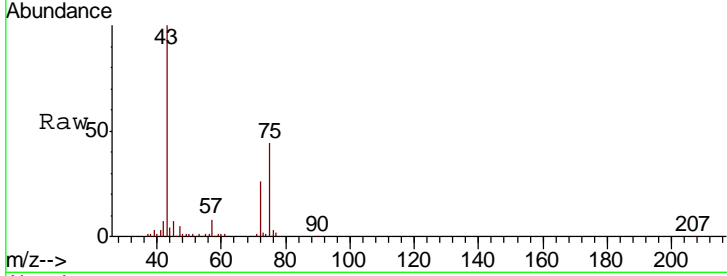




#26  
 2,2-Dichloropropane  
 Concen: 0.421 ug/l  
 RT: 6.80 min Scan# 1562  
 Delta R.T. -0.00 min  
 Lab File: VN059288.D  
 Acq: 18 Nov 2019 16:50

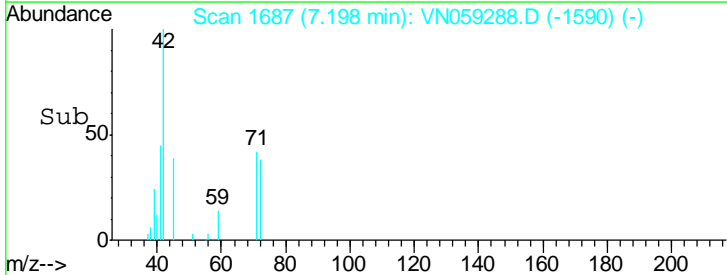
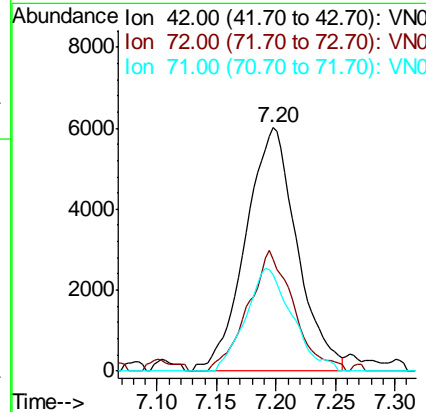
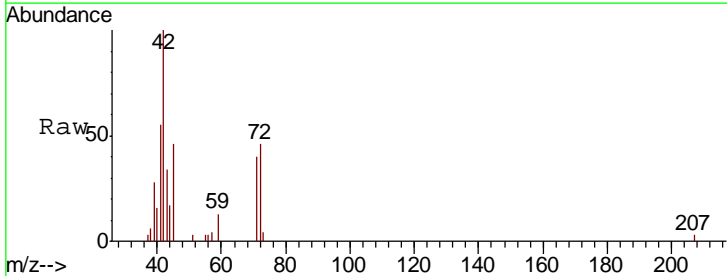
Instrument :  
 MSVOA\_N  
 ClientSampled :

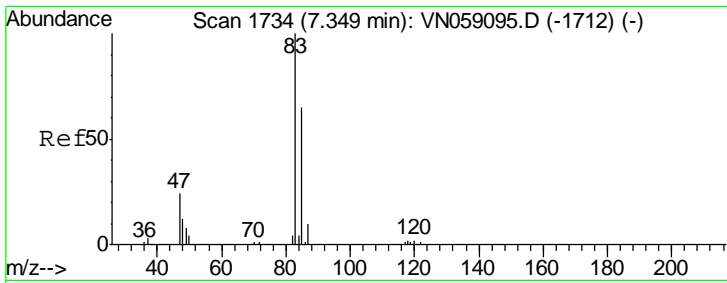
Tgt Ion	Resp	Lower	Upper
77	100		
97	0.0	11.2	33.6#



#29  
 Tetrahydrofuran  
 Concen: 7.087 ug/l  
 RT: 7.20 min Scan# 1687  
 Delta R.T. 0.01 min  
 Lab File: VN059288.D  
 Acq: 18 Nov 2019 16:50

Tgt Ion	Resp	Lower	Upper
42	100		
72	43.8	33.1	49.7
71	38.0	30.9	46.3

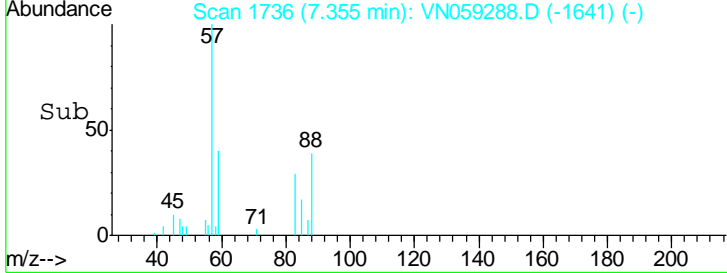
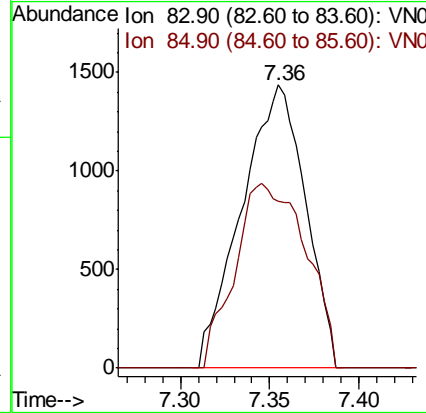
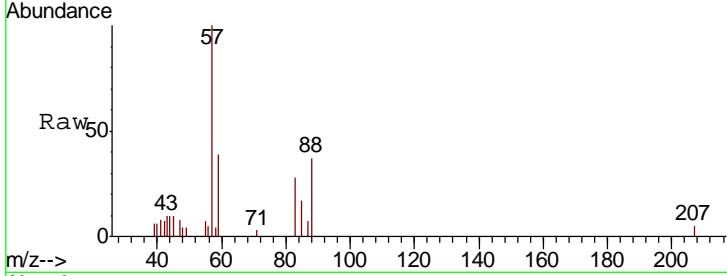




#30  
 Chloroform  
 Concen: 0.390 ug/l  
 RT: 7.36 min Scan# 1736  
 Delta R.T. 0.01 min  
 Lab File: VN059288.D  
 Acq: 18 Nov 2019 16:50

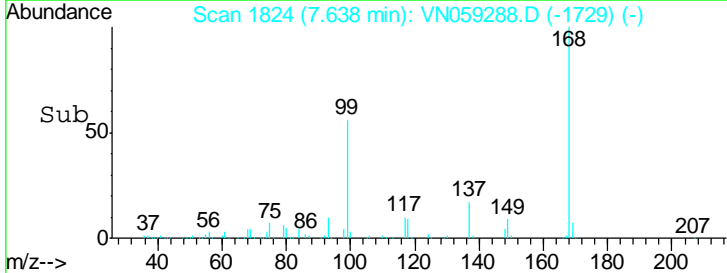
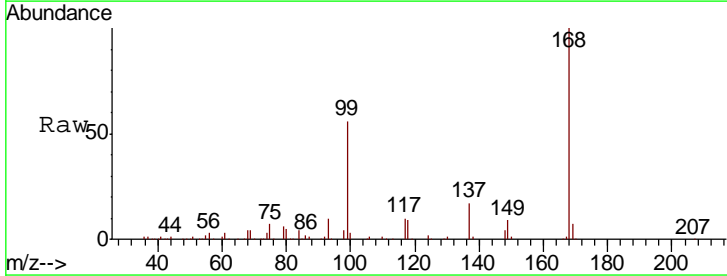
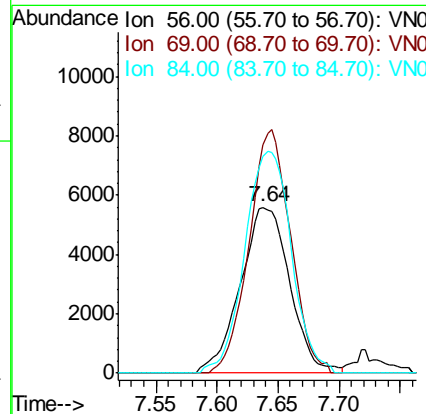
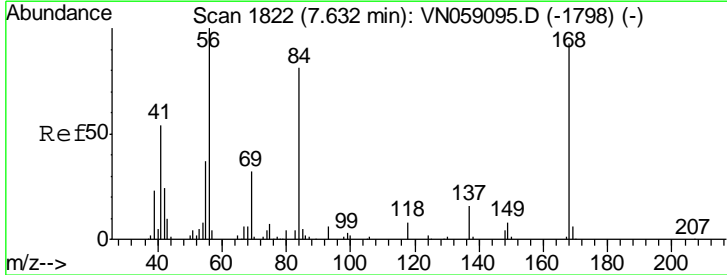
Instrument :  
 MSVOA\_N  
 ClientSampled :

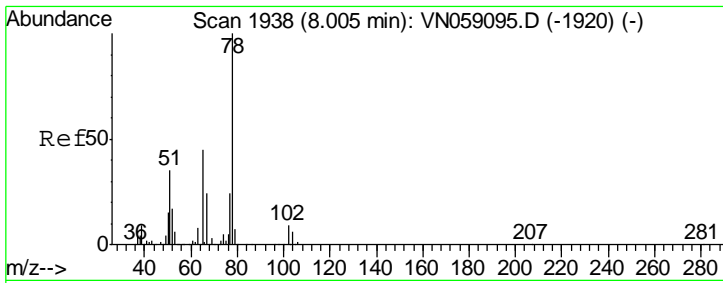
Tgt Ion	Resp	Lower	Upper
83	100		
85	59.1	51.8	77.8



#31  
 Cyclohexane  
 Concen: 1.731 ug/l  
 RT: 7.64 min Scan# 1824  
 Delta R.T. 0.01 min  
 Lab File: VN059288.D  
 Acq: 18 Nov 2019 16:50

Tgt Ion	Resp	Lower	Upper
56	100		
69	137.7	25.8	38.8#
84	131.0	65.0	97.4#

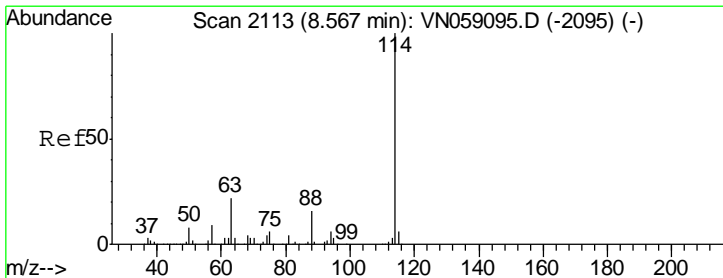
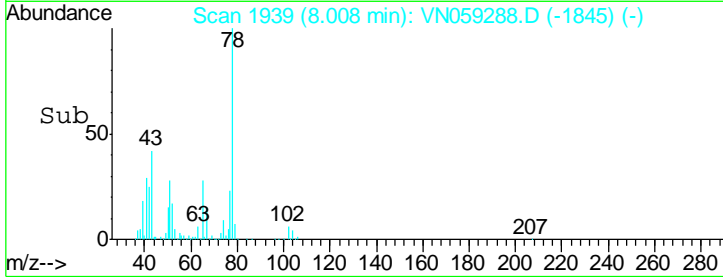
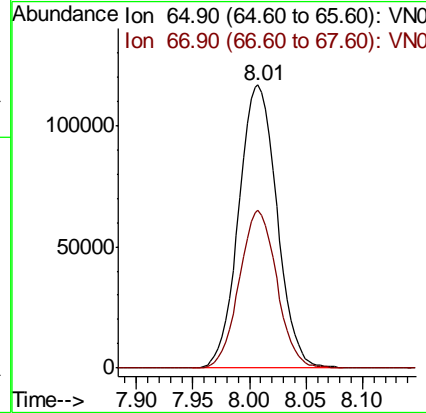
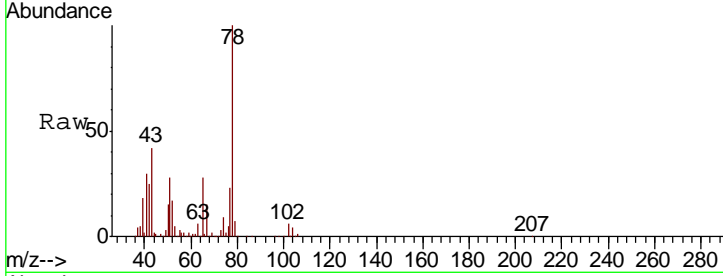




#33  
 1,2-Dichloroethane-d4  
 Concen: 46.973 ug/l  
 RT: 8.01 min Scan# 1939  
 Delta R.T. 0.00 min  
 Lab File: VN059288.D  
 Acq: 18 Nov 2019 16:50

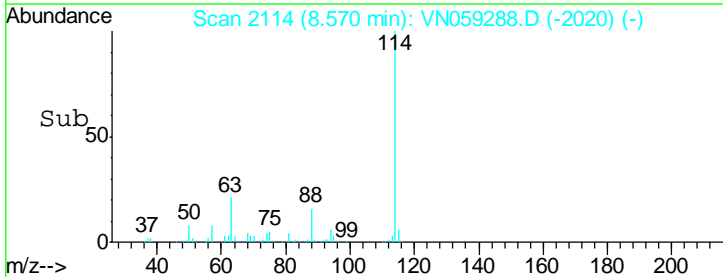
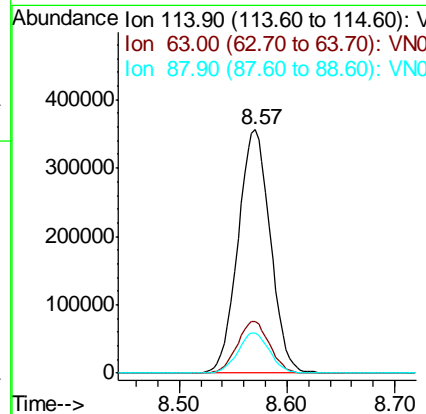
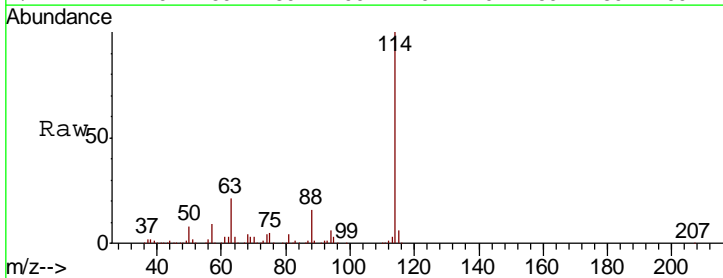
Instrument :  
 MSVOA\_N  
 ClientSampled :

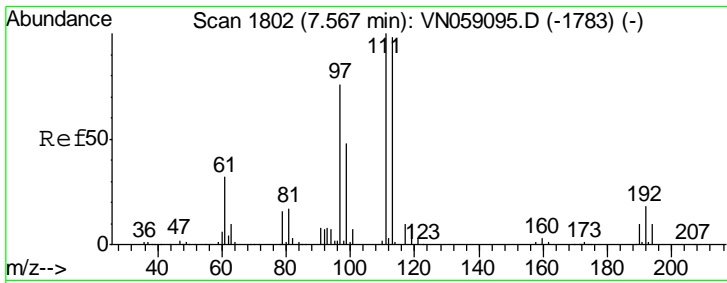
Tgt Ion	Resp	Lower	Upper
65	100		
67	54.8	0.0	107.4



#34  
 1,4-Difluorobenzene  
 Concen: 50.000 ug/l  
 RT: 8.57 min Scan# 2114  
 Delta R.T. 0.00 min  
 Lab File: VN059288.D  
 Acq: 18 Nov 2019 16:50

Tgt Ion	Resp	Lower	Upper
114	100		
63	21.3	0.0	43.4
88	16.4	0.0	32.2

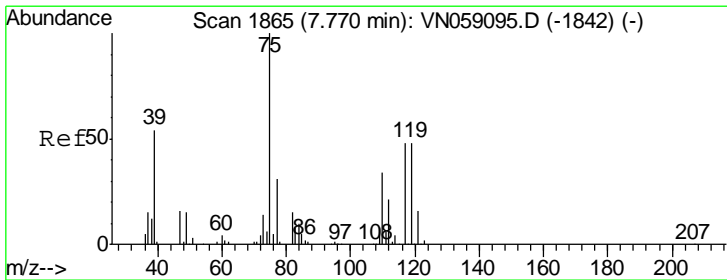
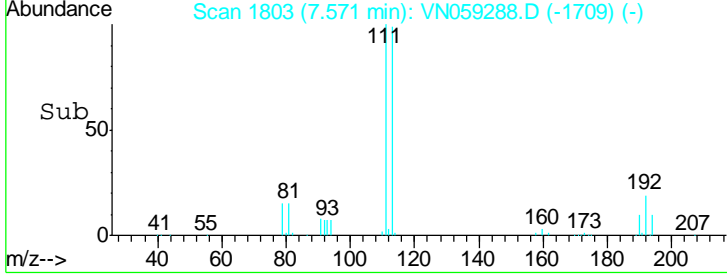
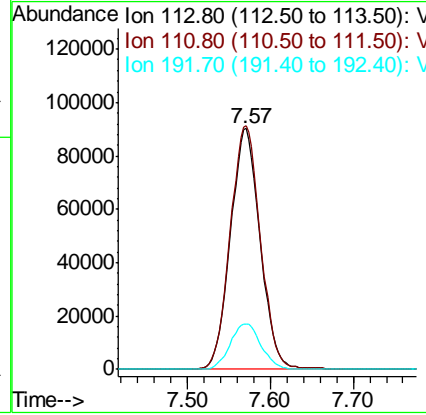
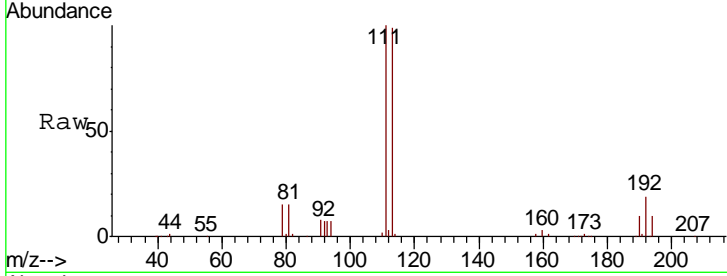




#35  
 Dibromofluoromethane  
 Concen: 50.640 ug/l  
 RT: 7.57 min Scan# 1803  
 Delta R.T. 0.00 min  
 Lab File: VN059288.D  
 Acq: 18 Nov 2019 16:50

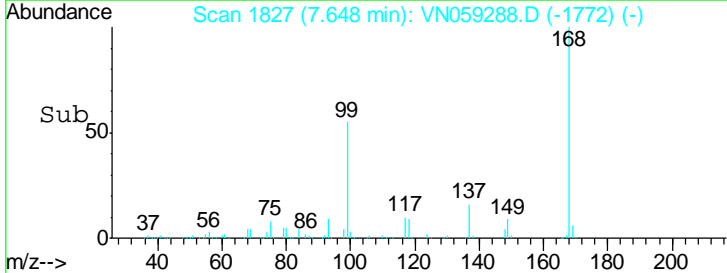
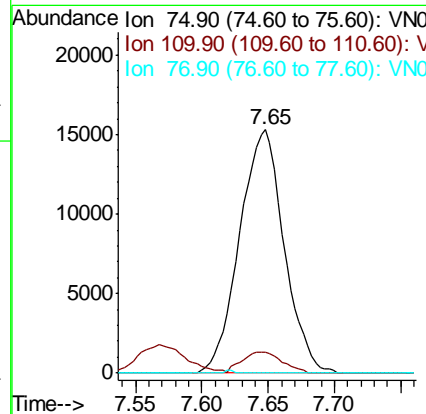
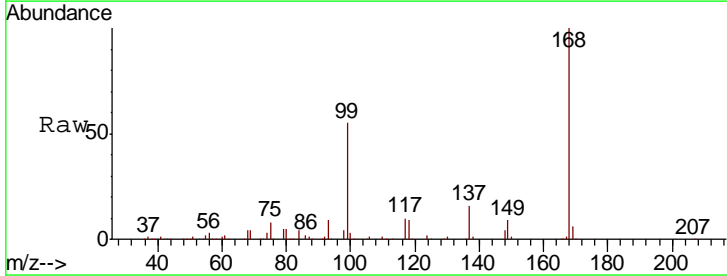
Instrument :  
 MSVOA\_N  
 ClientSampled :

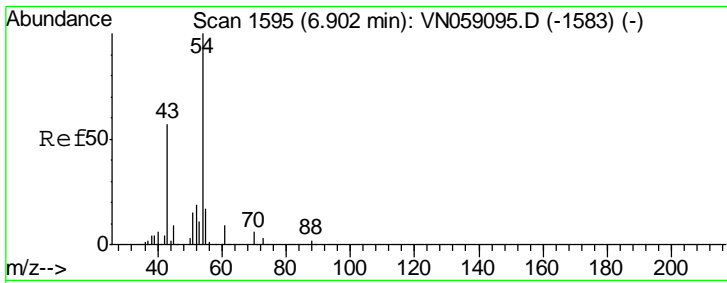
Tgt Ion	Resp	Lower	Upper
113	100		
111	102.5	82.8	124.2
192	19.4	16.1	24.1



#36  
 1,1-Dichloropropene  
 Concen: 5.138 ug/l  
 RT: 7.65 min Scan# 1827  
 Delta R.T. -0.12 min  
 Lab File: VN059288.D  
 Acq: 18 Nov 2019 16:50

Tgt Ion	Resp	Lower	Upper
75	100		
110	7.9	17.1	51.2#
77	0.0	24.8	37.2#

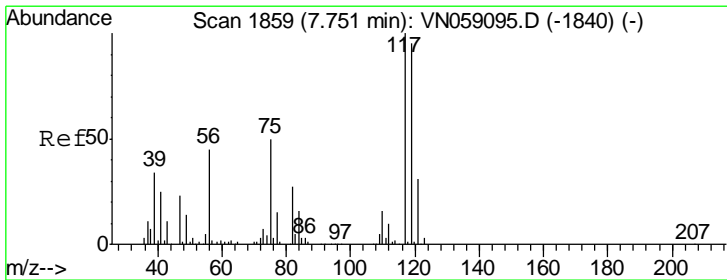
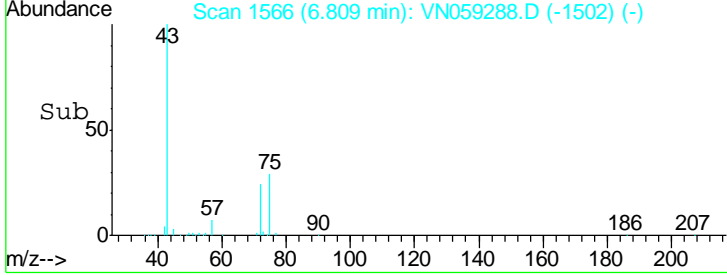
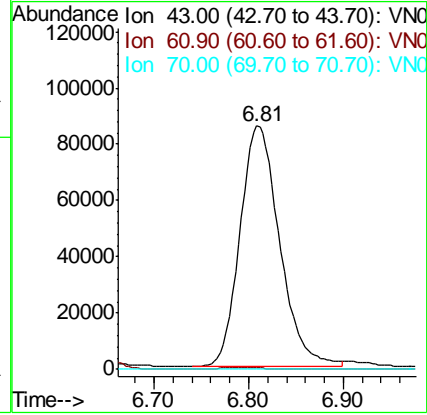
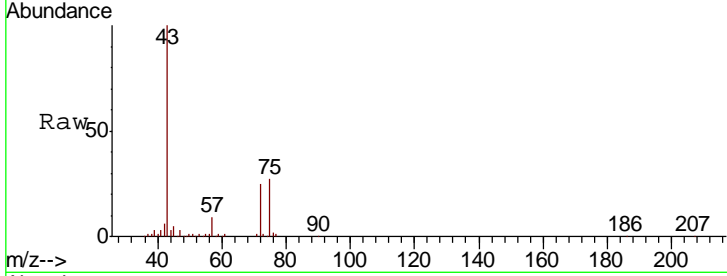




#37  
 Ethyl Acetate  
 Concen: 32.290 ug/l  
 RT: 6.81 min Scan# 1566  
 Delta R.T. -0.09 min  
 Lab File: VN059288.D  
 Acq: 18 Nov 2019 16:50

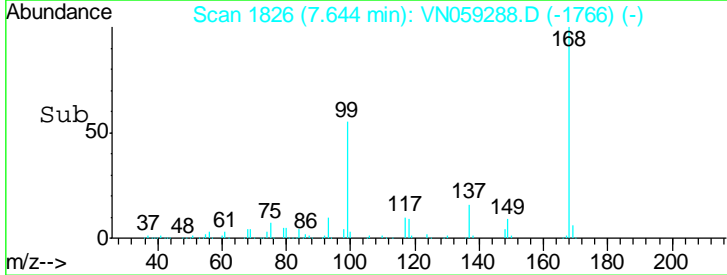
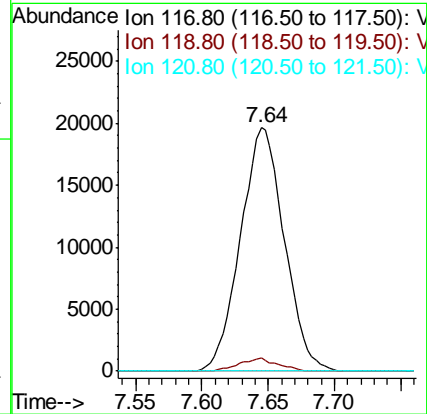
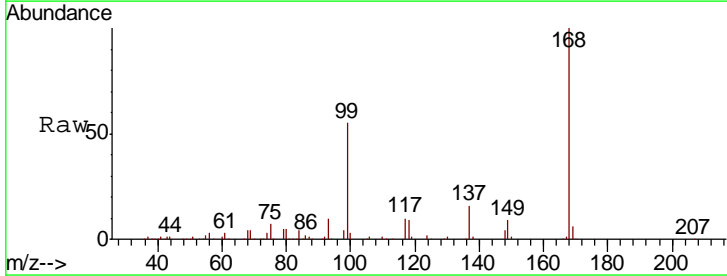
Instrument :  
 MSVOA\_N  
 ClientSampled :

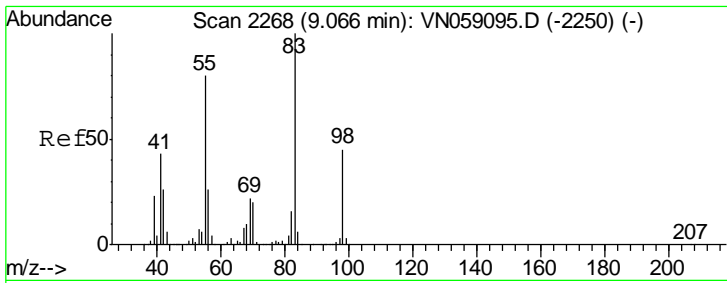
Tgt Ion	Resp	Lower	Upper
43	100		
61	0.0	11.2	16.8#
70	0.0	7.8	11.8#



#38  
 Carbon Tetrachloride  
 Concen: 6.528 ug/l  
 RT: 7.64 min Scan# 1826  
 Delta R.T. -0.11 min  
 Lab File: VN059288.D  
 Acq: 18 Nov 2019 16:50

Tgt Ion	Resp	Lower	Upper
117	100		
119	5.3	75.6	113.4#
121	0.0	24.6	36.8#

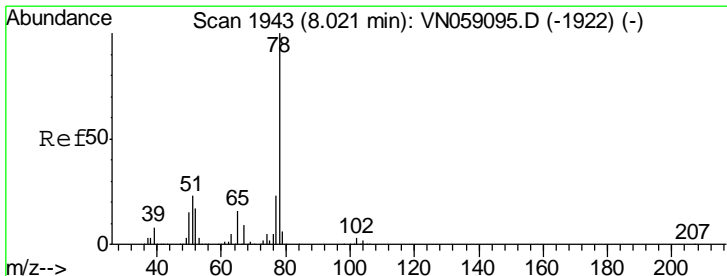
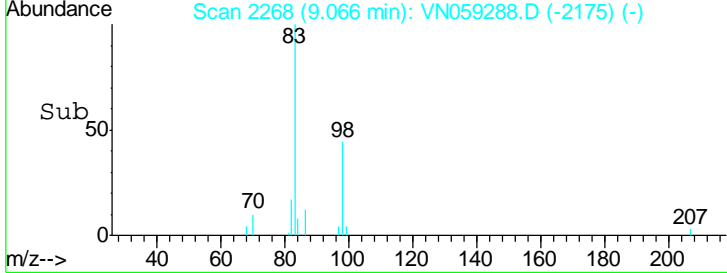
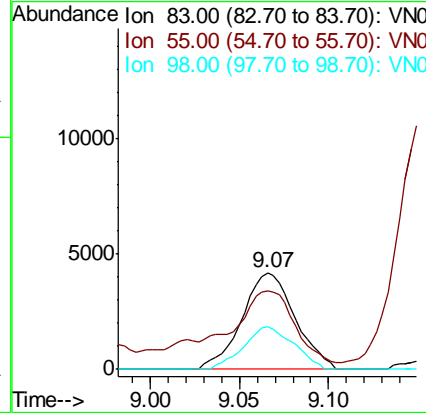
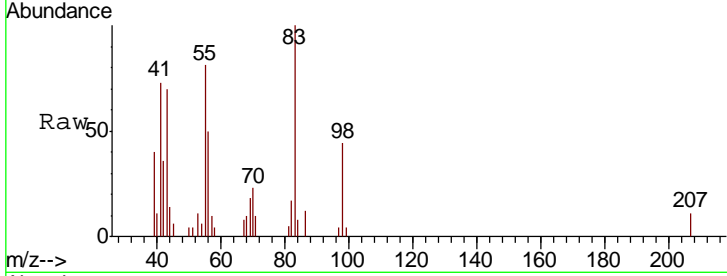




#39  
 Methylcyclohexane  
 Concen: 1.075 ug/l  
 RT: 9.07 min Scan# 2268  
 Delta R.T. -0.00 min  
 Lab File: VN059288.D  
 Acq: 18 Nov 2019 16:50

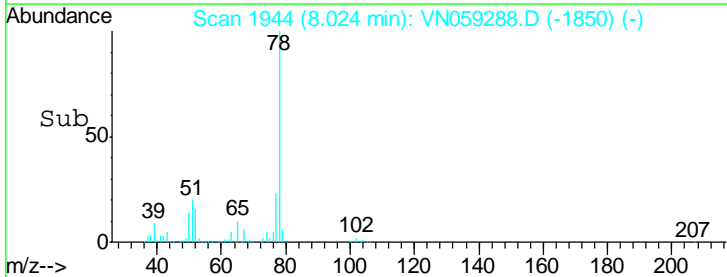
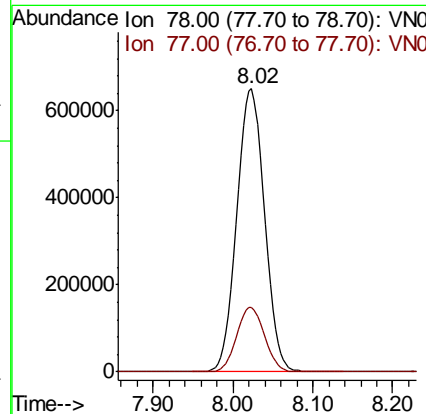
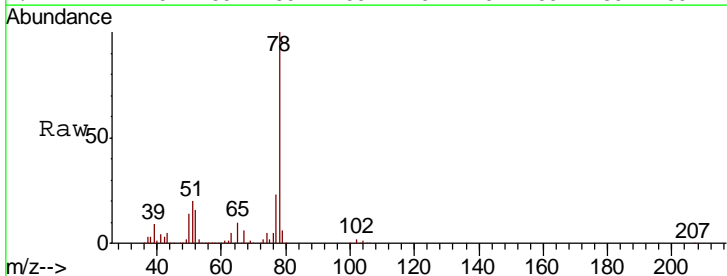
Instrument :  
 MSVOA\_N  
 ClientSampled :

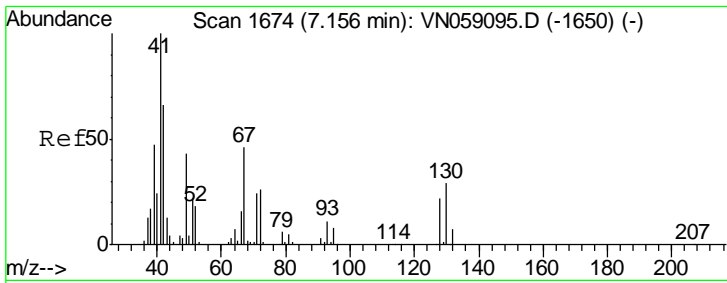
Tgt Ion	Resp	Lower	Upper
83	100		
55	73.6	63.9	95.9
98	44.1	35.6	53.4



#40  
 Benzene  
 Concen: 72.823 ug/l  
 RT: 8.02 min Scan# 1944  
 Delta R.T. 0.00 min  
 Lab File: VN059288.D  
 Acq: 18 Nov 2019 16:50

Tgt Ion	Resp	Lower	Upper
78	100		
77	22.8	18.8	28.2



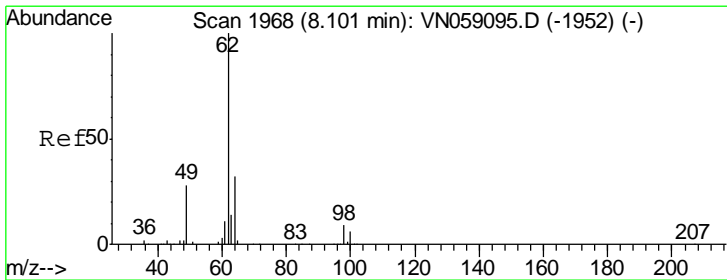
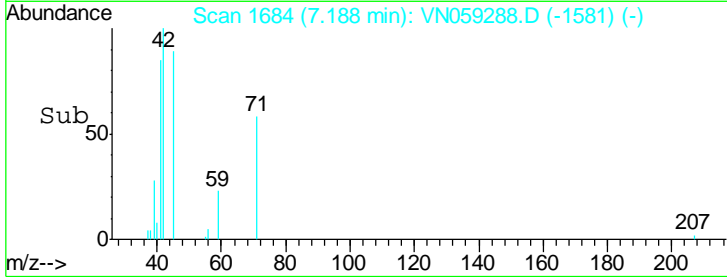
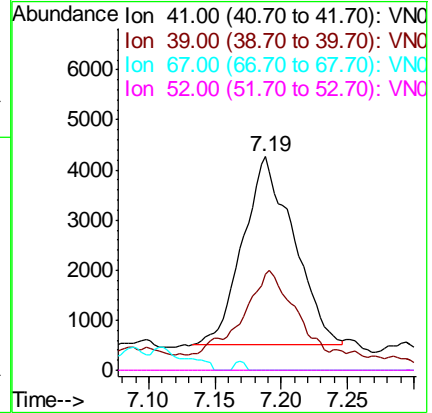
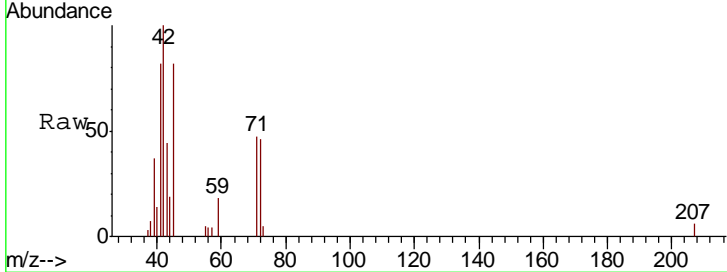


#41  
 Methacrylonitrile  
 Concen: 3.010 ug/l  
 RT: 7.19 min Scan# 1684  
 Delta R.T. 0.03 min  
 Lab File: VN059288.D  
 Acq: 18 Nov 2019 16:50

Instrument :  
 MSVOA\_N  
 ClientSampled :

Tgt Ion: 41 Resp: 10113

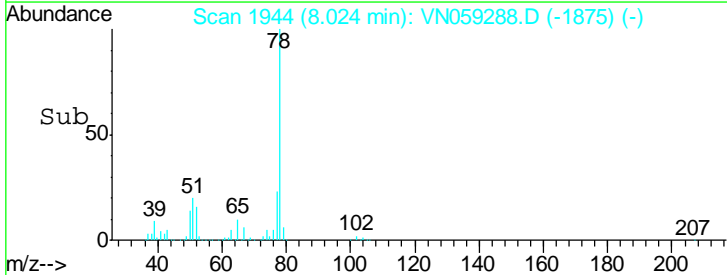
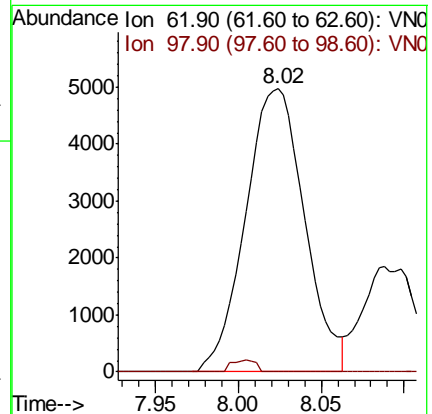
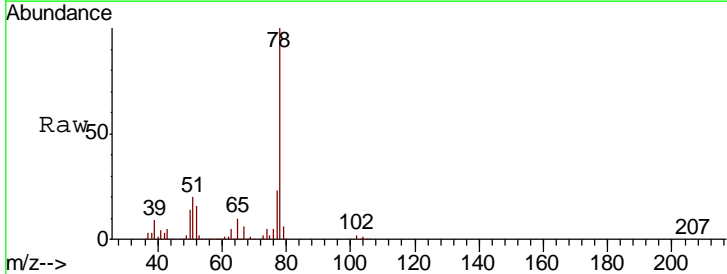
Ion	Ratio	Lower	Upper
41	100		
39	41.9	0.0	0.0#
67	0.0	0.0	0.0
52	0.0	0.0	0.0



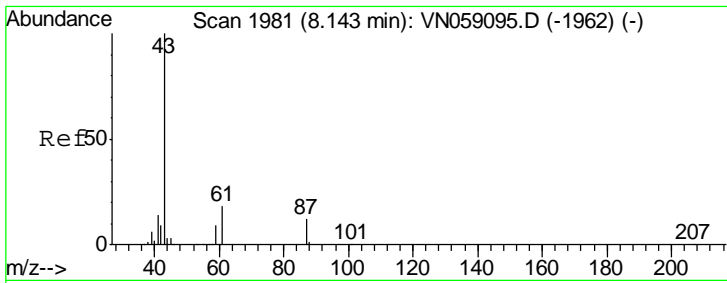
#42  
 1,2-Dichloroethane  
 Concen: 1.715 ug/l  
 RT: 8.02 min Scan# 1944  
 Delta R.T. -0.08 min  
 Lab File: VN059288.D  
 Acq: 18 Nov 2019 16:50

Tgt Ion: 62 Resp: 12303

Ion	Ratio	Lower	Upper
62	100		
98	1.8	0.0	17.8



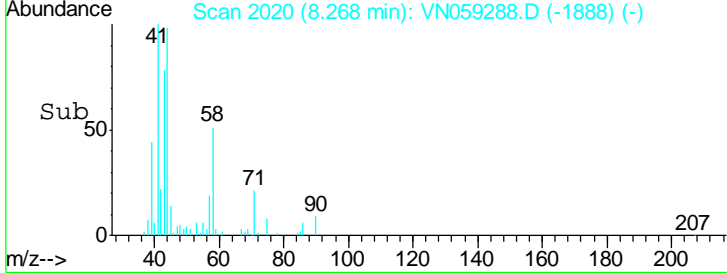
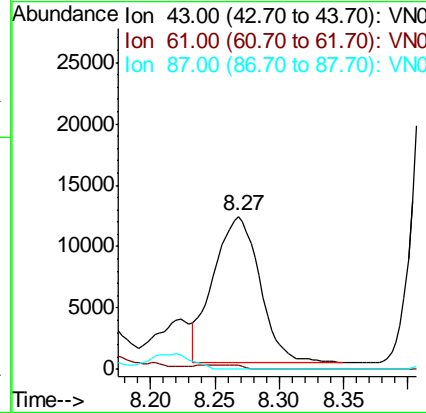
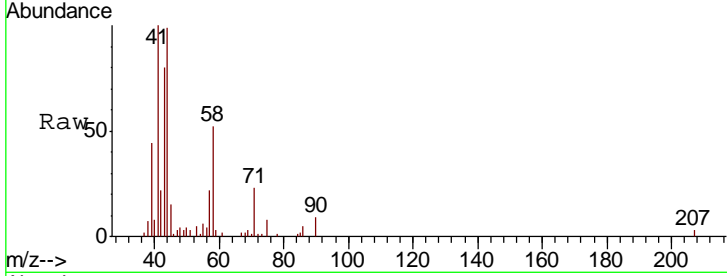




#43  
 Isopropyl Acetate  
 Concen: 2.432 ug/l  
 RT: 8.27 min Scan# 2020  
 Delta R.T. 0.13 min  
 Lab File: VN059288.D  
 Acq: 18 Nov 2019 16:50

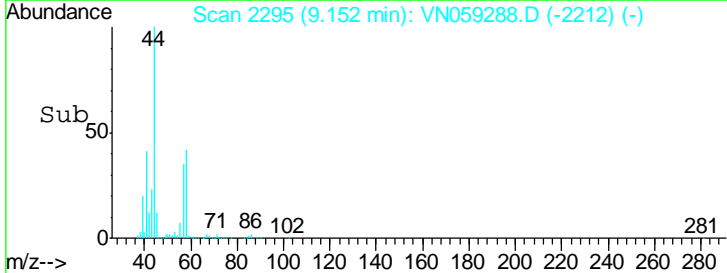
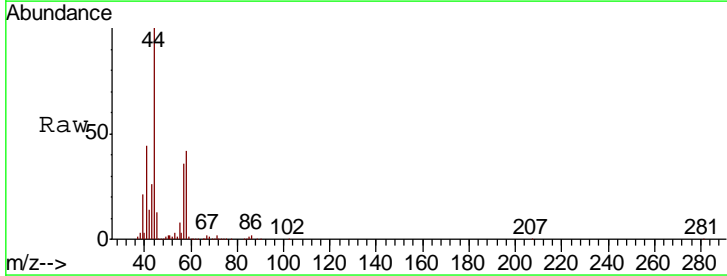
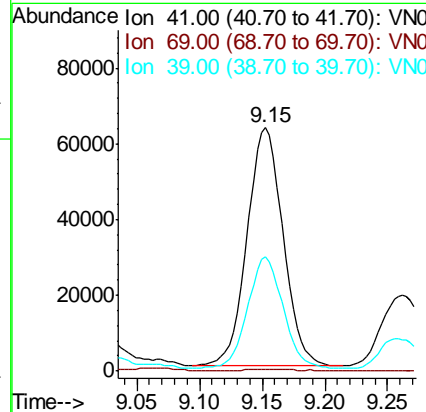
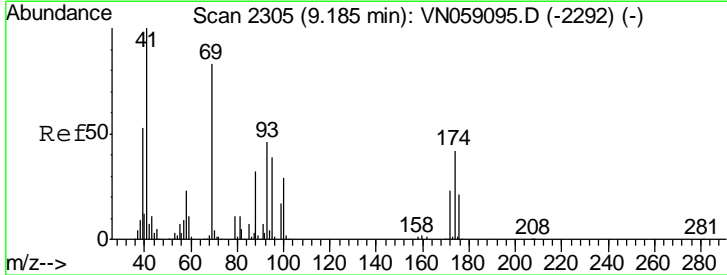
Instrument :  
 MSVOA\_N  
 ClientSampled :

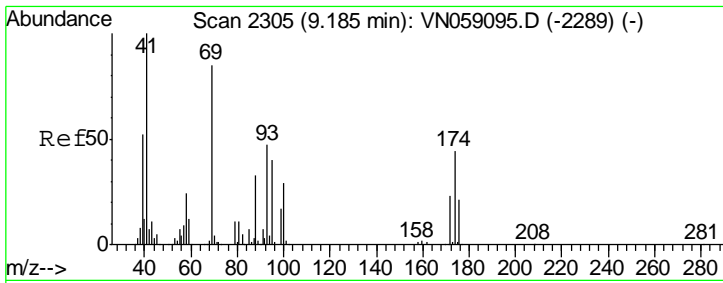
Tgt Ion	Resp	Lower	Upper
43	100		
61	0.0	21.0	31.6#
87	0.0	9.8	14.6#



#48  
 Methyl methacrylate  
 Concen: 22.848 ug/l  
 RT: 9.15 min Scan# 2295  
 Delta R.T. -0.03 min  
 Lab File: VN059288.D  
 Acq: 18 Nov 2019 16:50

Tgt Ion	Resp	Lower	Upper
41	100		
69	0.0	67.3	100.9#
39	46.5	43.3	64.9

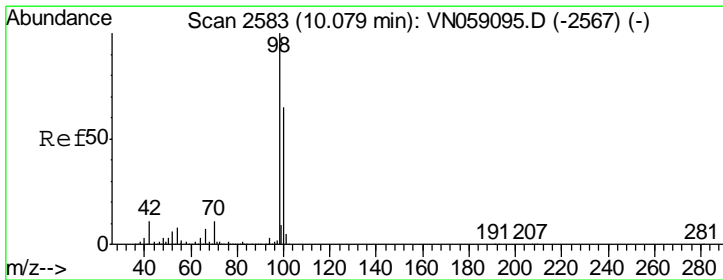
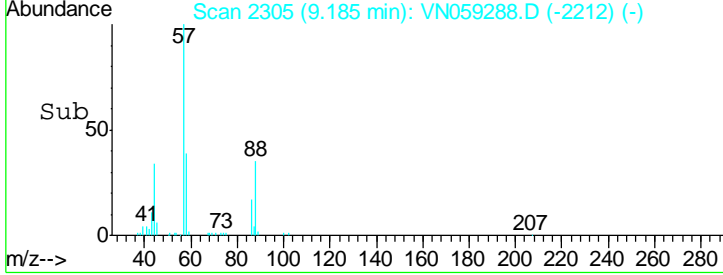
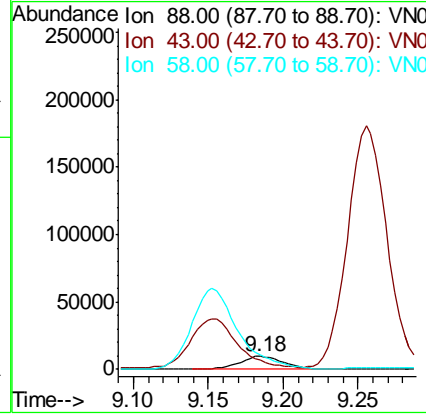
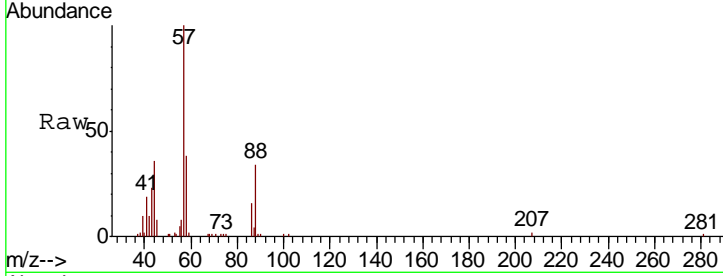




#49  
 1,4-Dioxane  
 Concen: 203.143 ug/l  
 RT: 9.18 min Scan# 2305  
 Delta R.T. -0.00 min  
 Lab File: VN059288.D  
 Acq: 18 Nov 2019 16:50

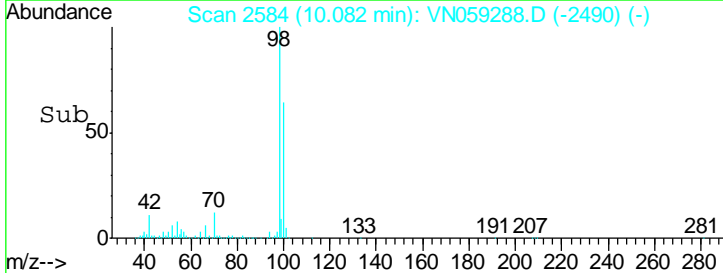
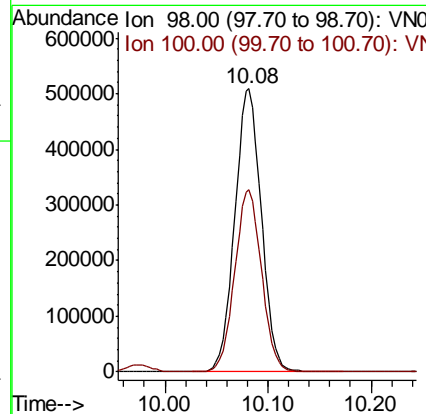
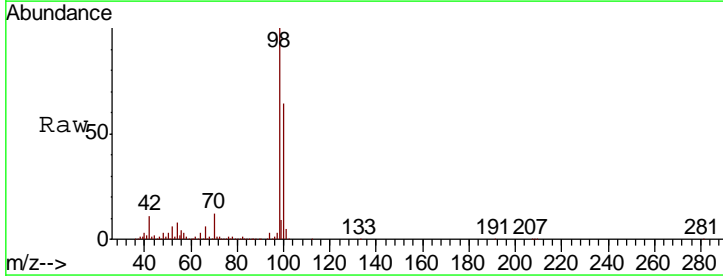
Instrument :  
 MSVOA\_N  
 ClientSampled :

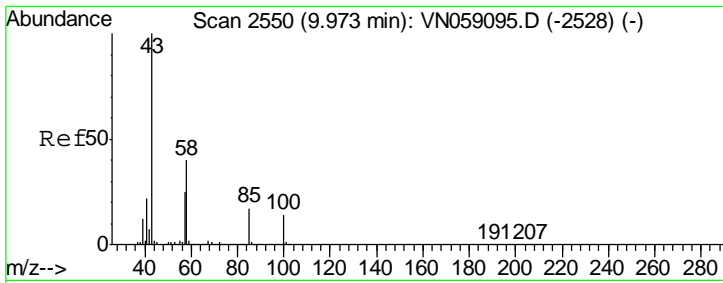
Tgt Ion	Resp	Lower	Upper
88	100		
43	0.0	26.3	39.5#
58	0.0	60.6	90.8#



#50  
 Toluene-d8  
 Concen: 52.341 ug/l  
 RT: 10.08 min Scan# 2584  
 Delta R.T. 0.00 min  
 Lab File: VN059288.D  
 Acq: 18 Nov 2019 16:50

Tgt Ion	Resp	Lower	Upper
98	100		
100	65.0	52.2	78.2

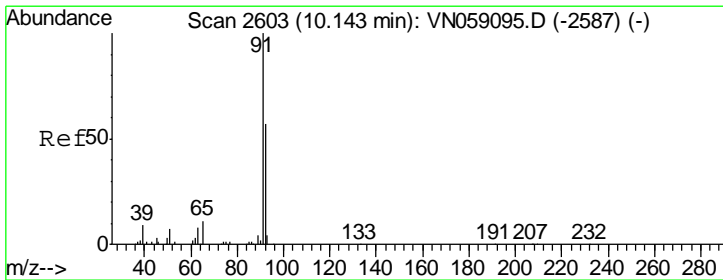
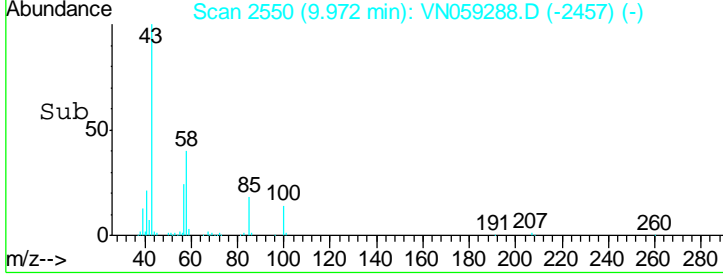
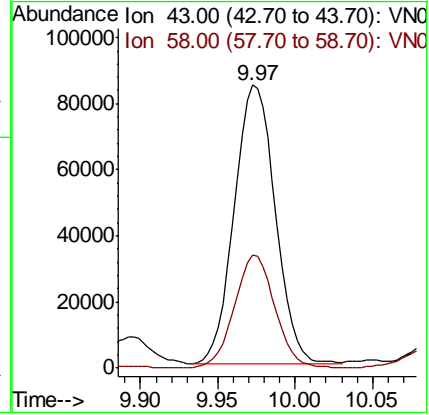
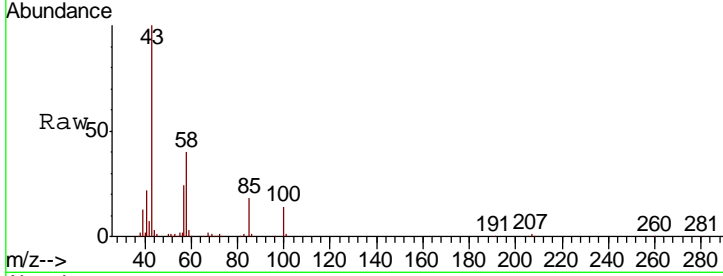




#51  
 4-Methyl-2-Pentanone  
 Concen: 22.177 ug/l  
 RT: 9.97 min Scan# 2550  
 Delta R.T. -0.00 min  
 Lab File: VN059288.D  
 Acq: 18 Nov 2019 16:50

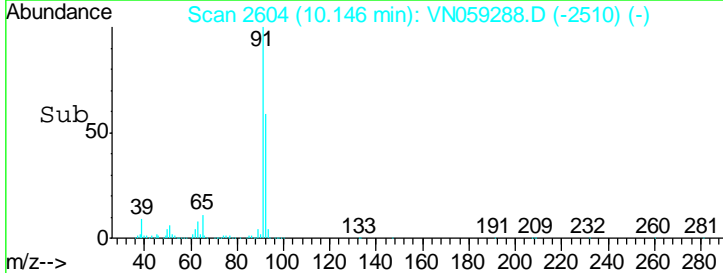
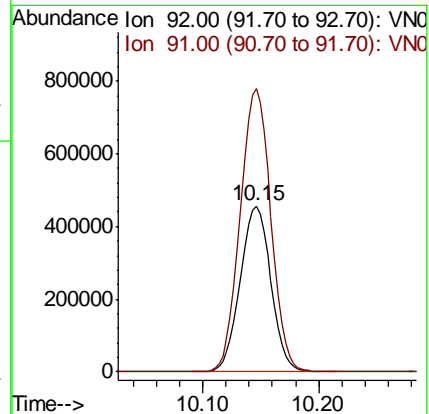
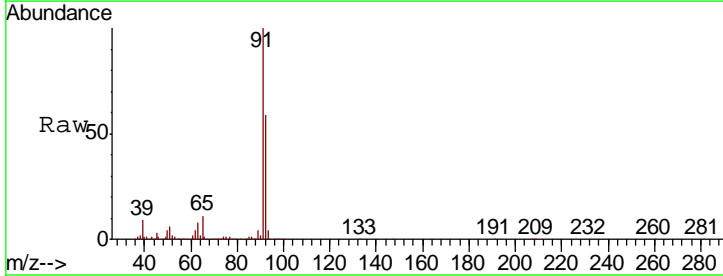
Instrument :  
 MSVOA\_N  
 ClientSampled :

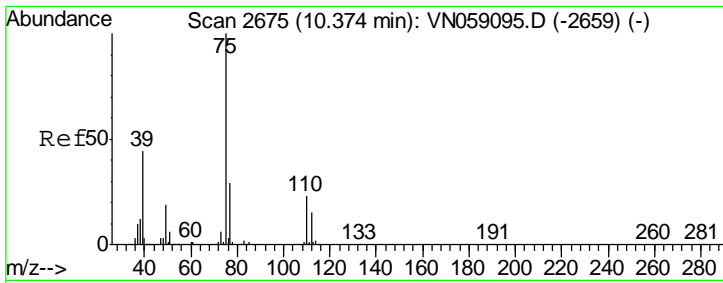
Tgt Ion	Resp	Lower	Upper
43	100		
58	40.4	31.5	47.3



#52  
 Toluene  
 Concen: 66.462 ug/l  
 RT: 10.15 min Scan# 2604  
 Delta R.T. 0.00 min  
 Lab File: VN059288.D  
 Acq: 18 Nov 2019 16:50

Tgt Ion	Resp	Lower	Upper
92	100		
91	171.6	139.5	209.3

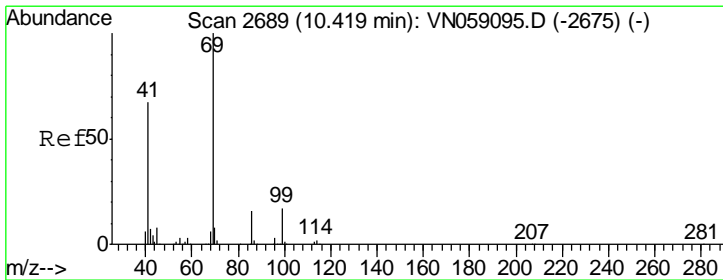
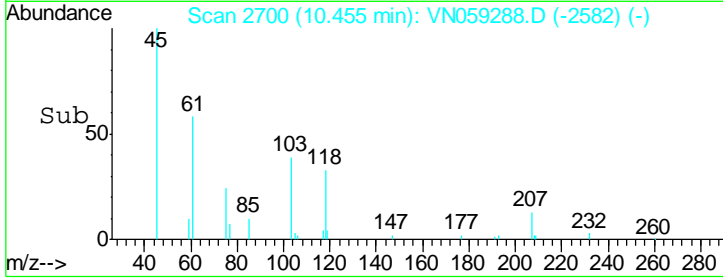
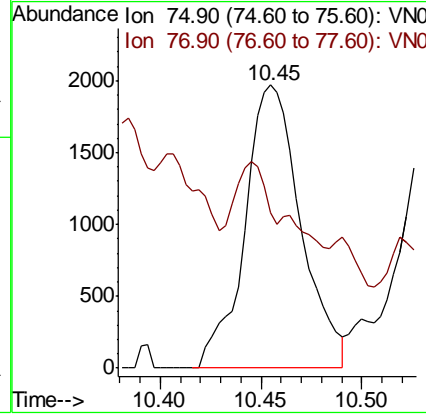
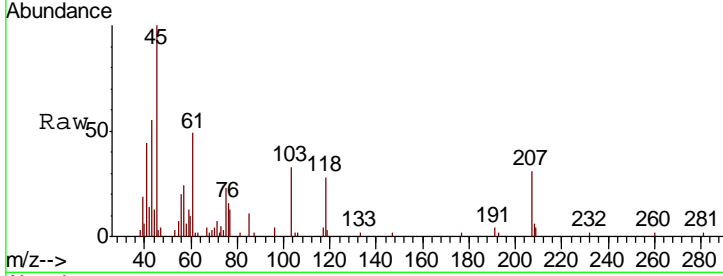




#53  
 t-1,3-Dichloropropene  
 Concen: 0.468 ug/l  
 RT: 10.45 min Scan# 2700  
 Delta R.T. 0.08 min  
 Lab File: VN059288.D  
 Acq: 18 Nov 2019 16:50

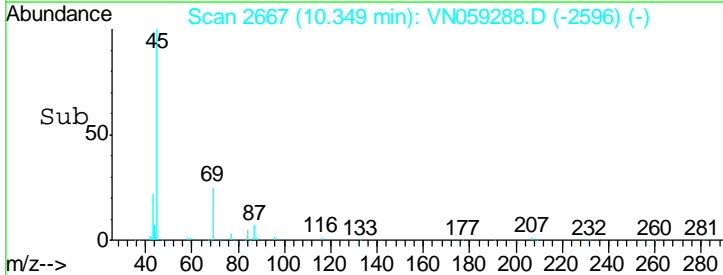
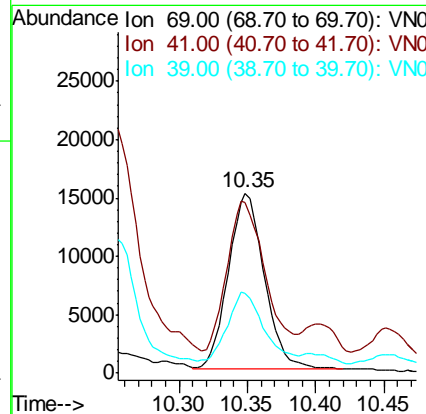
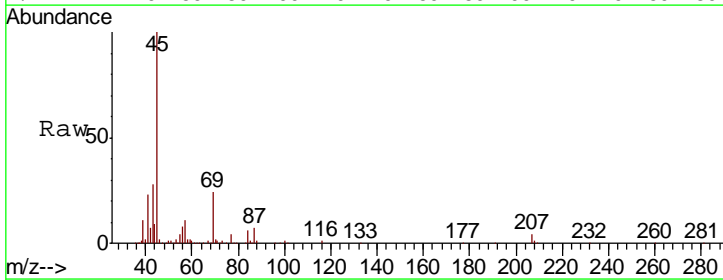
Instrument : MSVOA\_N  
 ClientSampled :

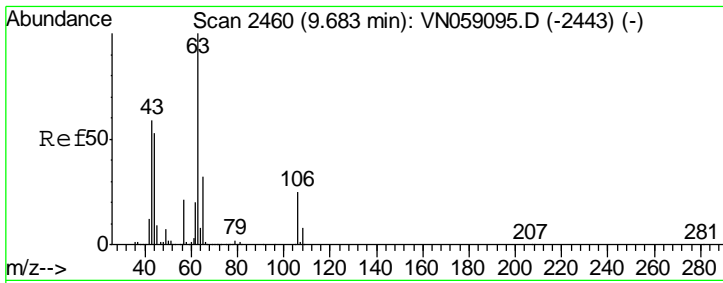
Tgt Ion:	75	Resp:	3822
Ion Ratio	Lower	Upper	
75	100		
77	8.4	25.3	37.9#



#56  
 Ethyl methacrylate  
 Concen: 5.025 ug/l  
 RT: 10.35 min Scan# 2667  
 Delta R.T. -0.07 min  
 Lab File: VN059288.D  
 Acq: 18 Nov 2019 16:50

Tgt Ion:	69	Resp:	27708
Ion Ratio	Lower	Upper	
69	100		
41	87.6	53.6	80.4#
39	37.2	26.2	39.4

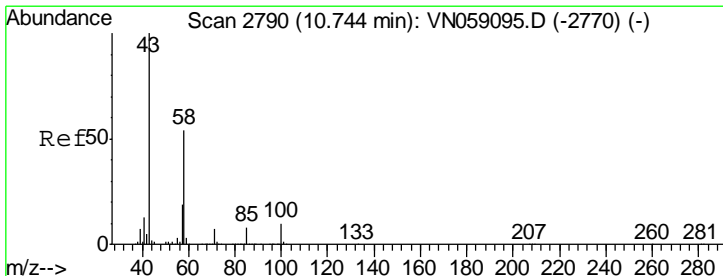
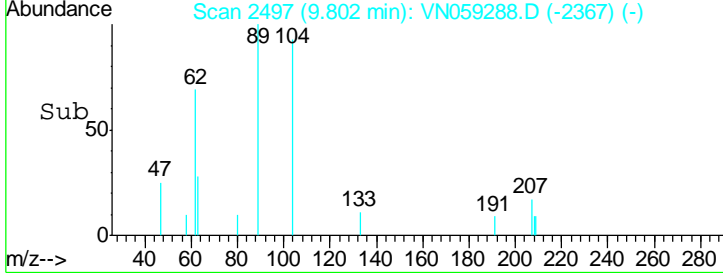
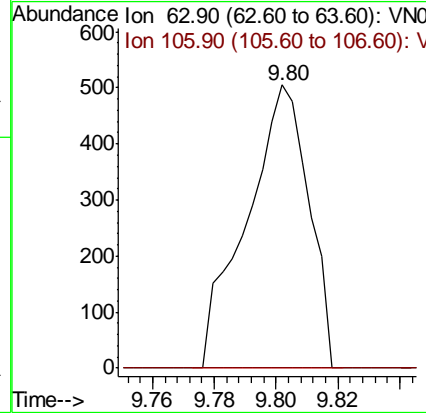
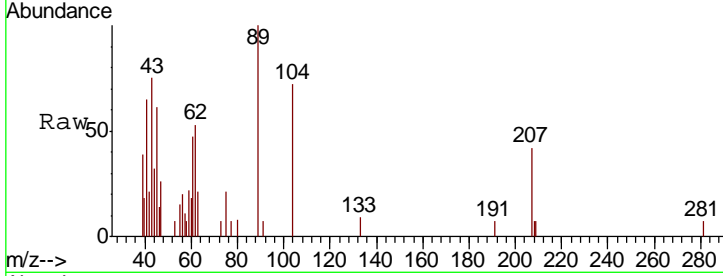




#58  
 2-Chloroethyl Vinyl ether  
 Concen: 0.250 ug/l  
 RT: 9.80 min Scan# 2497  
 Delta R.T. 0.12 min  
 Lab File: VN059288.D  
 Acq: 18 Nov 2019 16:50

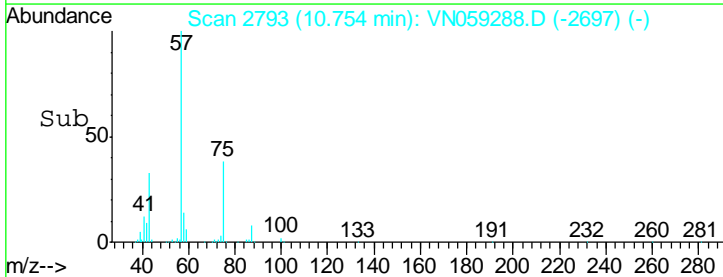
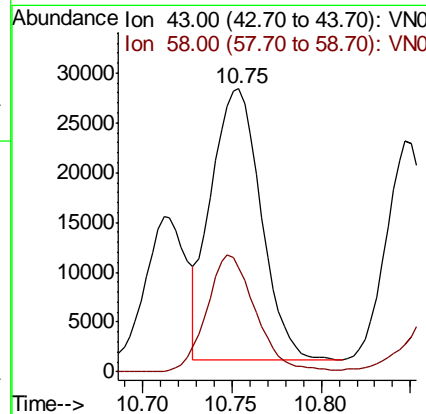
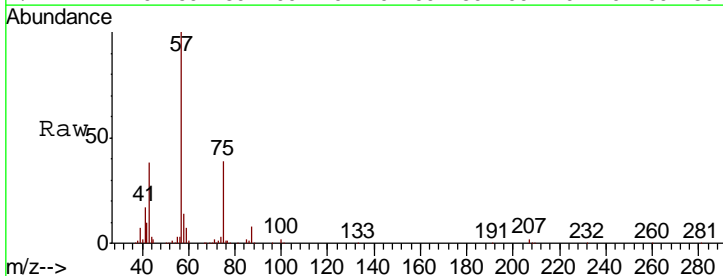
**Instrument :**  
 MSVOA\_N  
**ClientSampled :**

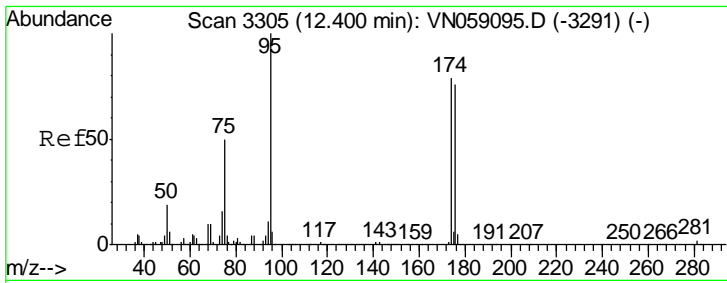
Tgt Ion	Resp	Lower	Upper
63	100		
106	0.0	20.2	30.2#



#59  
 2-Hexanone  
 Concen: 9.940 ug/l  
 RT: 10.75 min Scan# 2793  
 Delta R.T. 0.01 min  
 Lab File: VN059288.D  
 Acq: 18 Nov 2019 16:50

Tgt Ion	Resp	Lower	Upper
43	100		
58	42.0	27.3	81.8

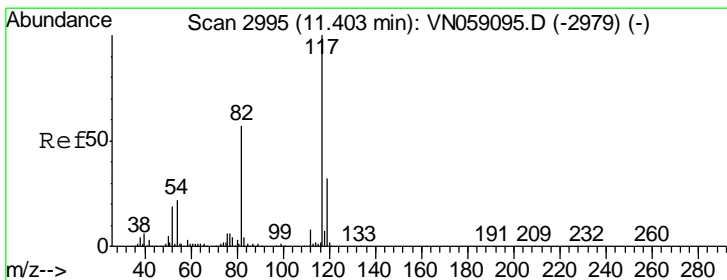
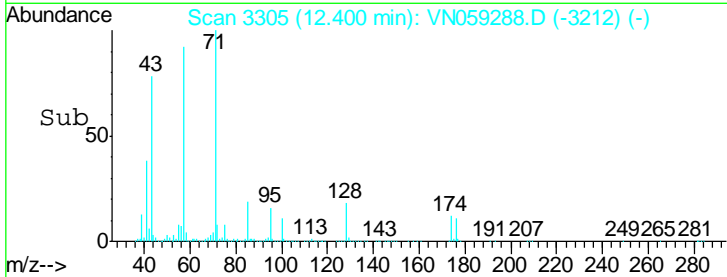
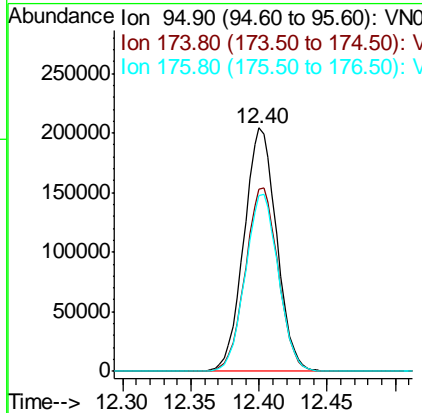
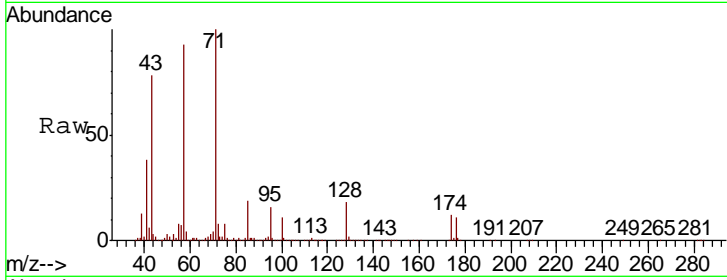




#62  
 4-Bromofluorobenzene  
 Concen: 53.601 ug/l  
 RT: 12.40 min Scan# 3305  
 Delta R.T. -0.00 min  
 Lab File: VN059288.D  
 Acq: 18 Nov 2019 16:50

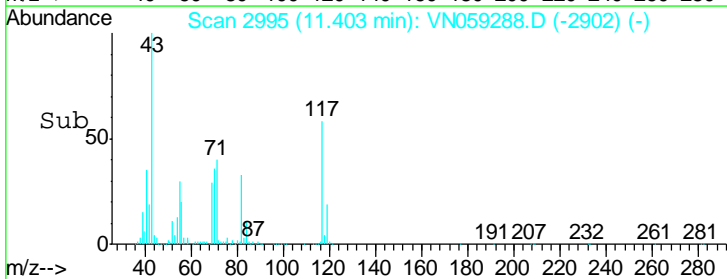
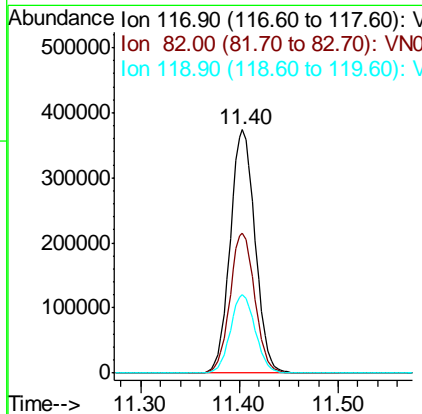
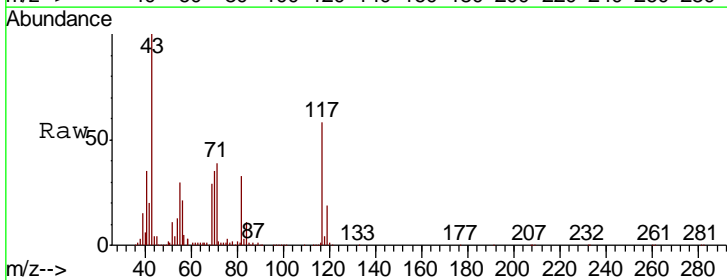
Instrument :  
 MSVOA\_N  
 ClientSampled :

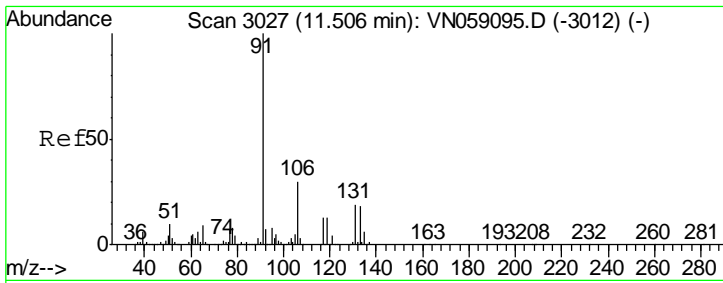
Tgt Ion	Resp	Lower	Upper
95	337779		
174	76.2	0.0	158.2
176	73.9	0.0	151.8



#63  
 Chlorobenzene-d5  
 Concen: 50.000 ug/l  
 RT: 11.40 min Scan# 2995  
 Delta R.T. -0.00 min  
 Lab File: VN059288.D  
 Acq: 18 Nov 2019 16:50

Tgt Ion	Resp	Lower	Upper
117	659241		
82	57.5	45.8	68.8
119	32.2	25.8	38.6

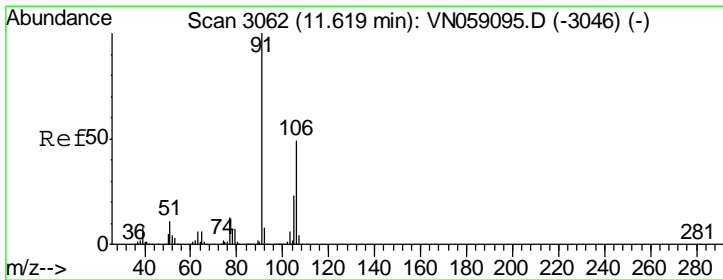
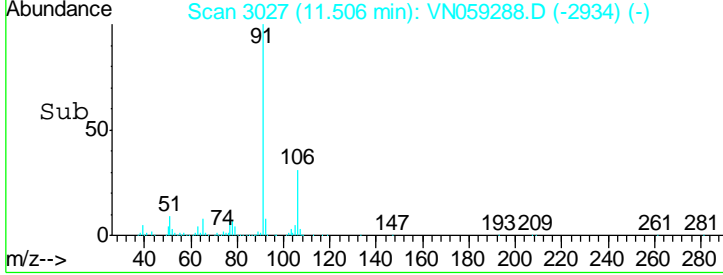
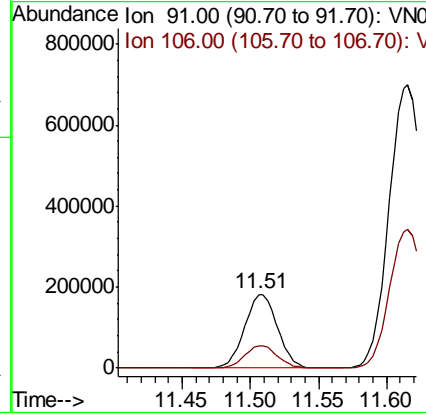
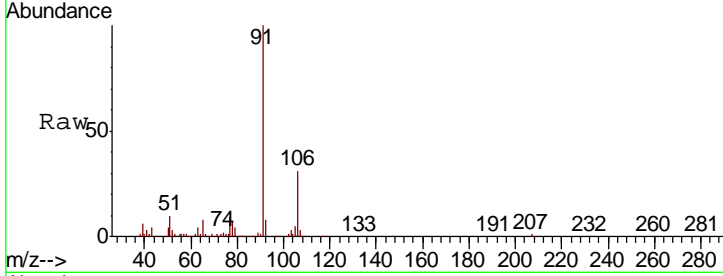




#67  
 Ethyl Benzene  
 Concen: 13.406 ug/l  
 RT: 11.51 min Scan# 3027  
 Delta R.T. -0.00 min  
 Lab File: VN059288.D  
 Acq: 18 Nov 2019 16:50

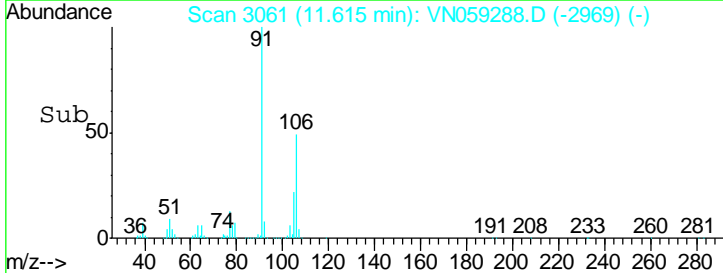
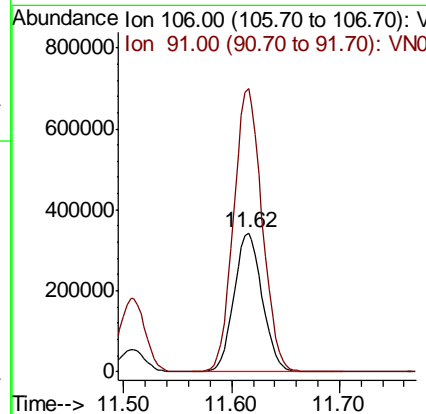
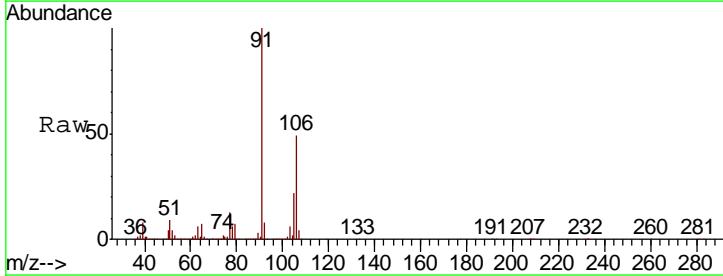
Instrument :  
 MSVOA\_N  
 ClientSampled :

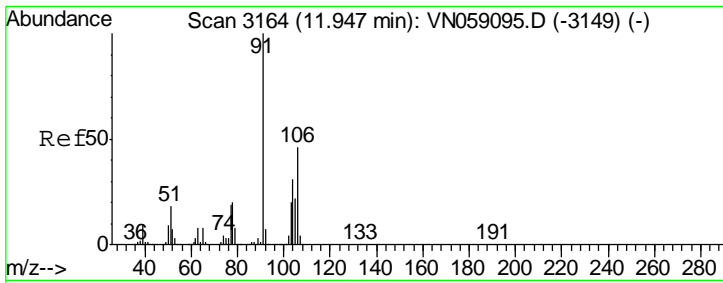
Tgt Ion: 91 Resp: 305661  
 Ion Ratio Lower Upper  
 91 100  
 106 30.7 24.1 36.1



#68  
 m/p-Xylenes  
 Concen: 73.339 ug/l  
 RT: 11.62 min Scan# 3061  
 Delta R.T. -0.00 min  
 Lab File: VN059288.D  
 Acq: 18 Nov 2019 16:50

Tgt Ion: 106 Resp: 626384  
 Ion Ratio Lower Upper  
 106 100  
 91 205.5 164.7 247.1

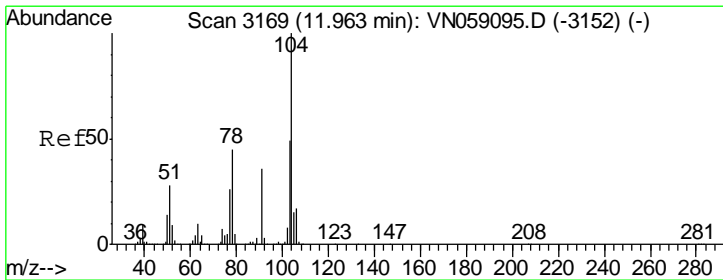
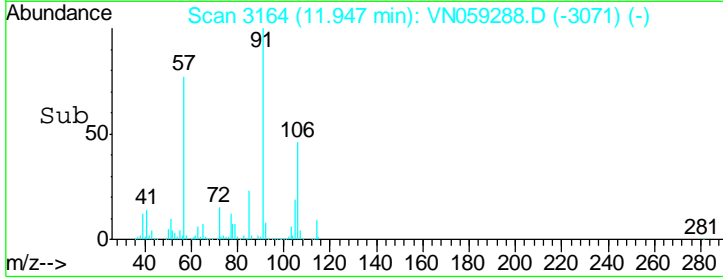
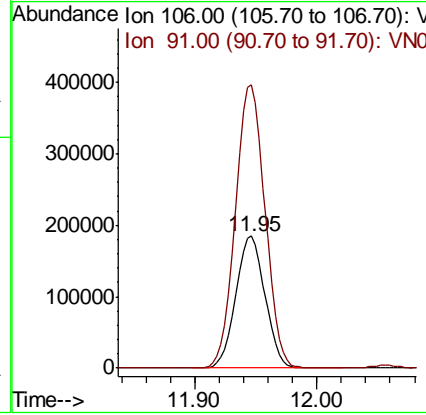
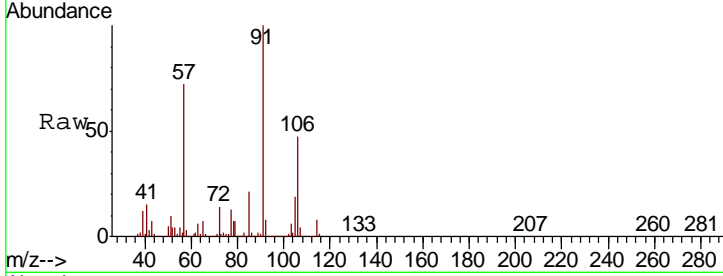




#69  
 o-Xylene  
 Concen: 37.197 ug/l  
 RT: 11.95 min Scan# 3164  
 Delta R.T. -0.00 min  
 Lab File: VN059288.D  
 Acq: 18 Nov 2019 16:50

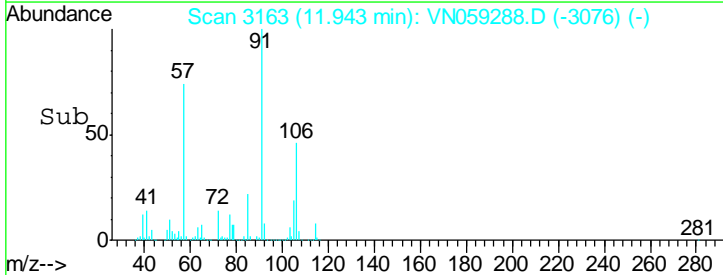
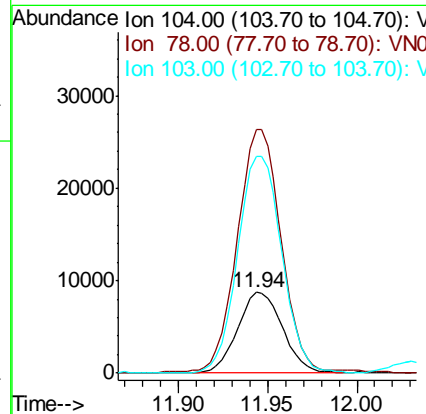
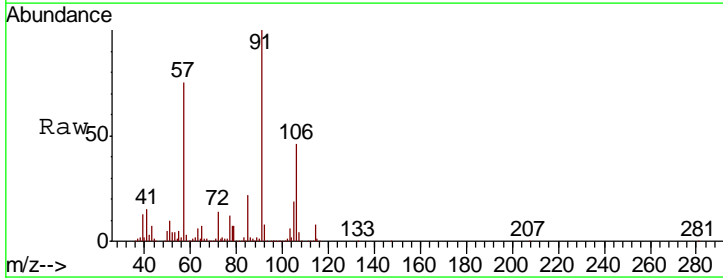
Instrument : MSVOA\_N  
 ClientSampled :

Tgt Ion	Resp	Lower	Upper
106	307020		
91	217.9	110.1	330.3

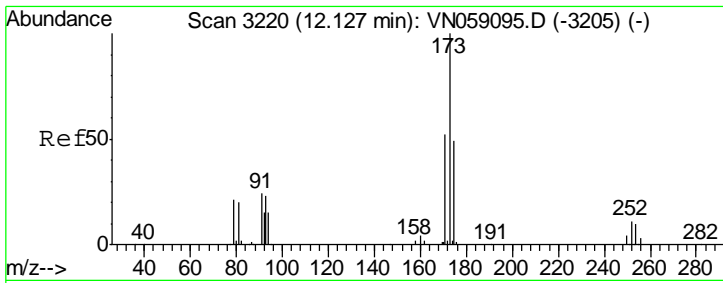


#70  
 Styrene  
 Concen: 1.185 ug/l  
 RT: 11.94 min Scan# 3163  
 Delta R.T. -0.02 min  
 Lab File: VN059288.D  
 Acq: 18 Nov 2019 16:50

Tgt Ion	Resp	Lower	Upper
104	15379		
78	295.3	41.2	61.8#
103	264.7	43.8	65.6#



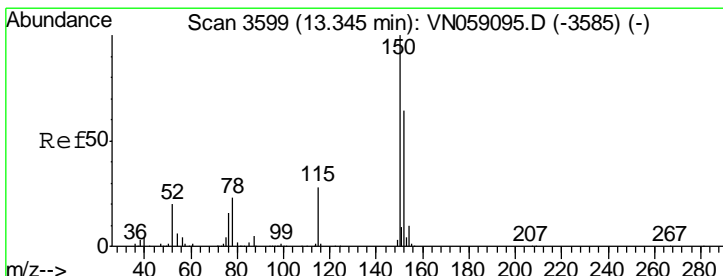
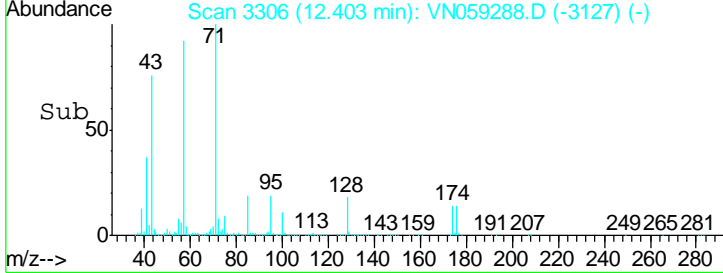
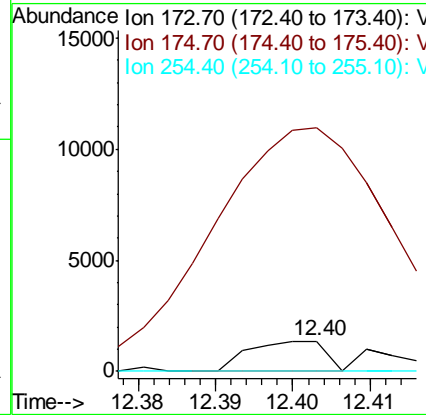
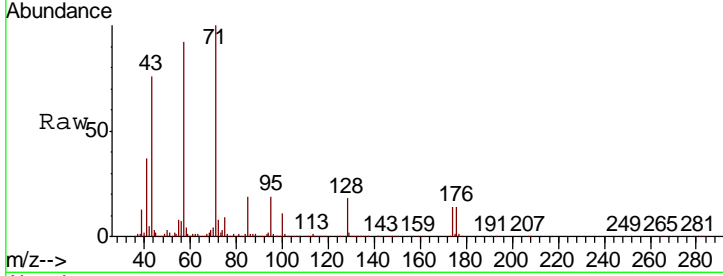




#71  
 Bromoform  
 Concen: 0.248 ug/l  
 RT: 12.40 min Scan# 3306  
 Delta R.T. 0.28 min  
 Lab File: VN059288.D  
 Acq: 18 Nov 2019 16:50

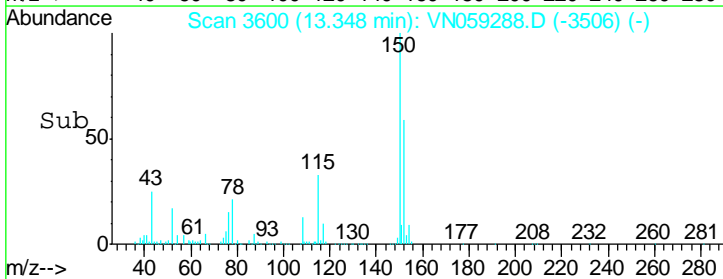
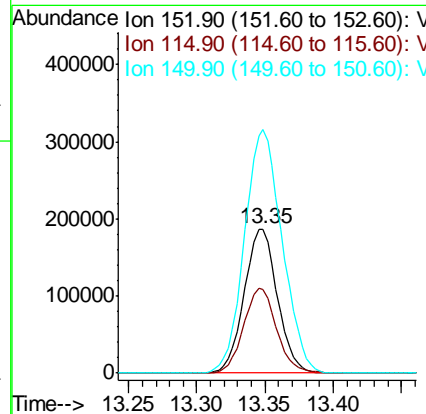
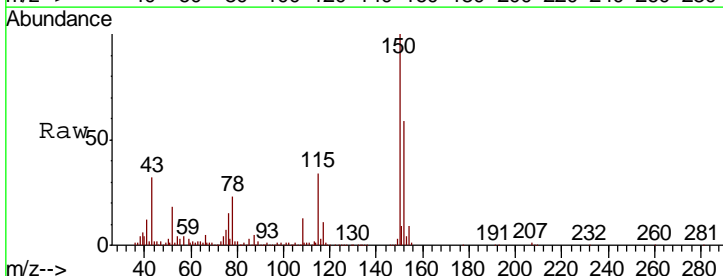
Instrument :  
 MSVOA\_N  
 ClientSampled :

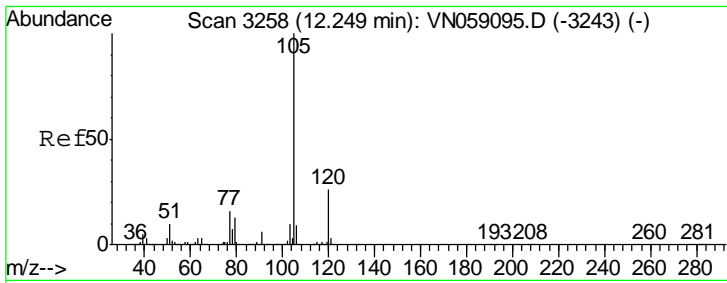
Tgt Ion	Resp	Lower	Upper
173	930		
175	1746.5	24.2	72.6#
254	0.0	0.1	0.1#



#72  
 1,4-Dichlorobenzene-d4  
 Concen: 50.000 ug/l  
 RT: 13.35 min Scan# 3600  
 Delta R.T. 0.00 min  
 Lab File: VN059288.D  
 Acq: 18 Nov 2019 16:50

Tgt Ion	Resp	Lower	Upper
152	314799		
152	100		
115	58.3	29.4	88.2
150	191.8	0.0	345.8

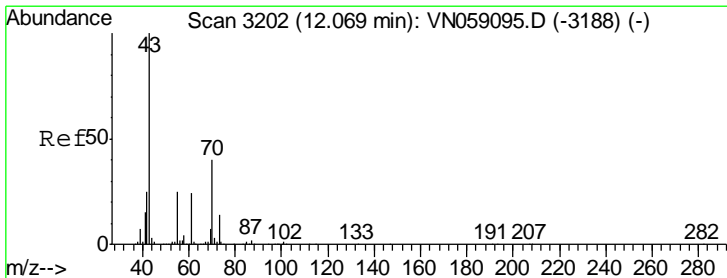
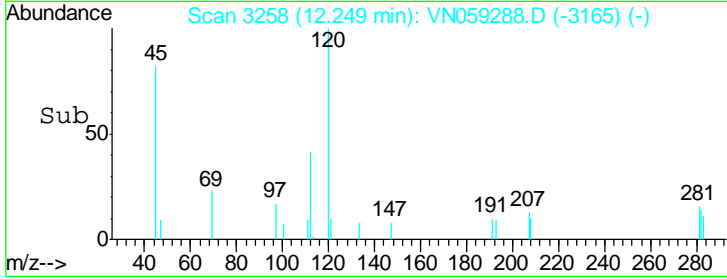
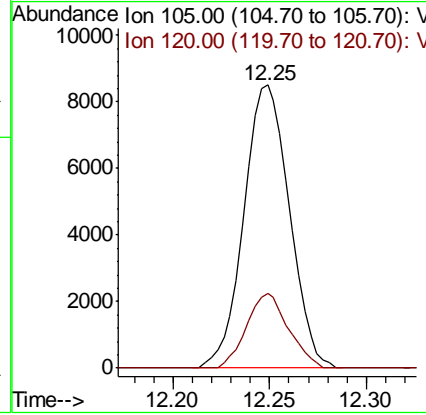
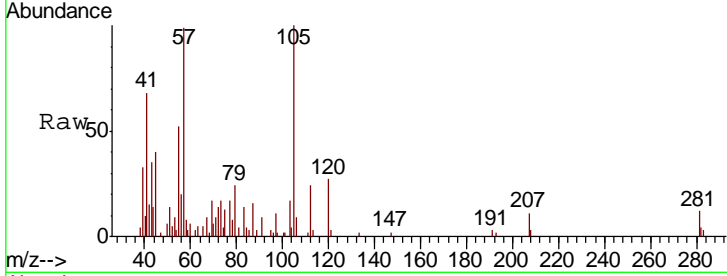




#73  
 Isopropylbenzene  
 Concen: 0.608 ug/l  
 RT: 12.25 min Scan# 3258  
 Delta R.T. -0.00 min  
 Lab File: VN059288.D  
 Acq: 18 Nov 2019 16:50

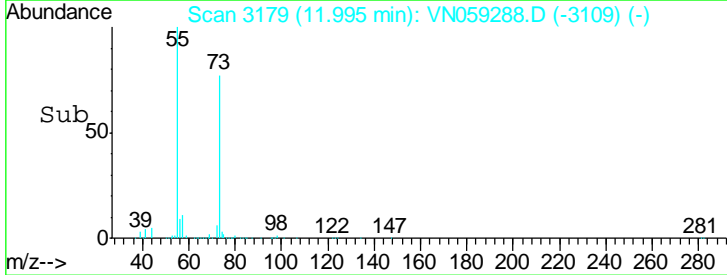
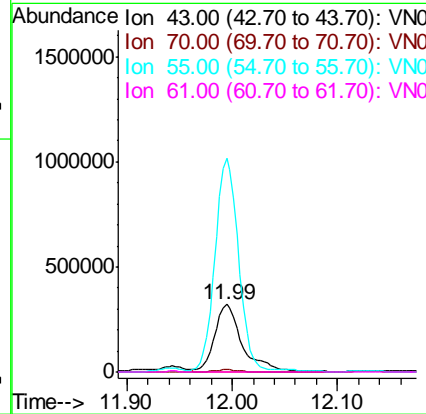
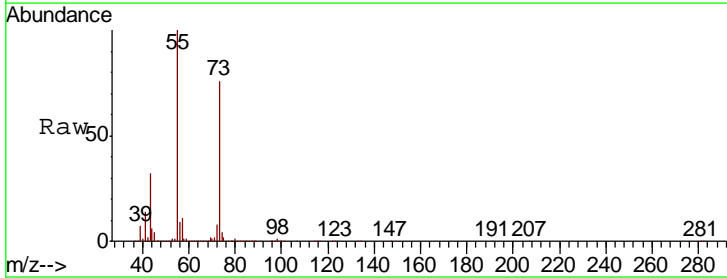
Instrument : MSVOA\_N  
 ClientSampled :

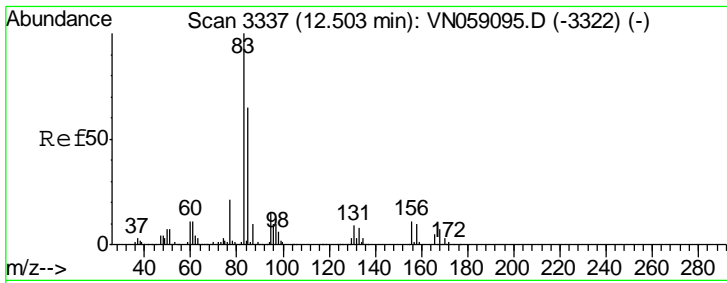
Tgt Ion	Resp	Lower	Upper
105	13913		
120	24.4	13.1	39.3



#74  
 N-amyl acetate  
 Concen: 59.507 ug/l  
 RT: 11.99 min Scan# 3179  
 Delta R.T. -0.07 min  
 Lab File: VN059288.D  
 Acq: 18 Nov 2019 16:50

Tgt Ion	Resp	Lower	Upper
43	577394		
70	2.9	32.2	48.4#
55	267.6	20.4	30.6#
61	0.1	19.3	28.9#

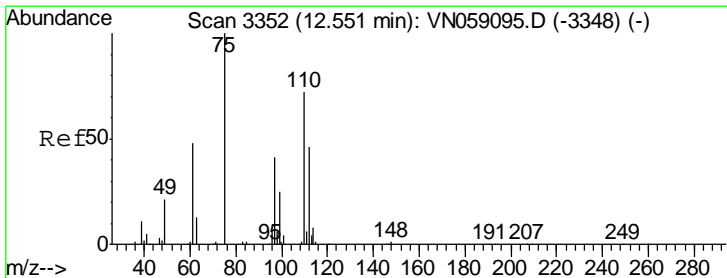
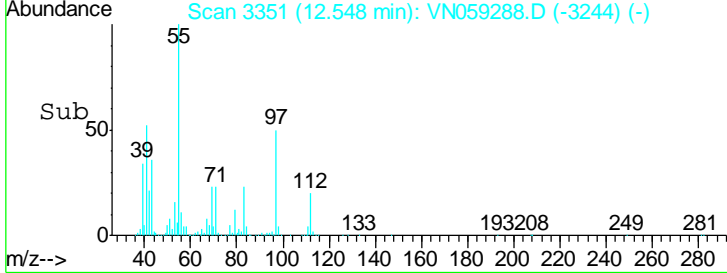
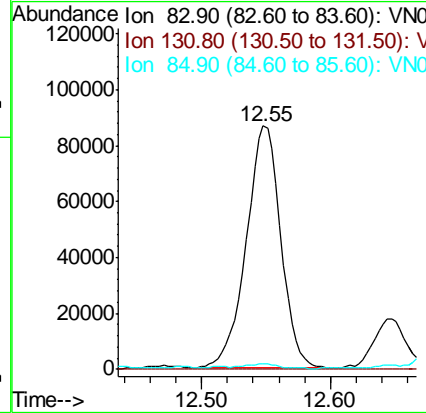
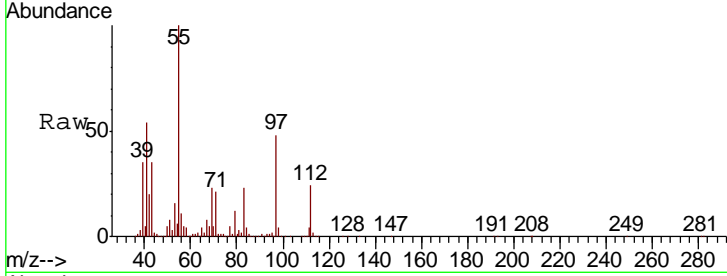




#75  
 1,1,2,2-Tetrachloroethane  
 Concen: 20.685 ug/l  
 RT: 12.55 min Scan# 3351  
 Delta R.T. 0.04 min  
 Lab File: VN059288.D  
 Acq: 18 Nov 2019 16:50

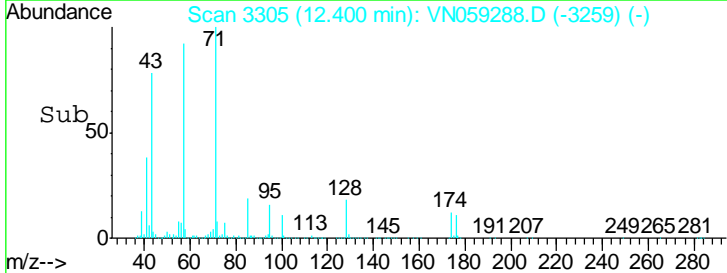
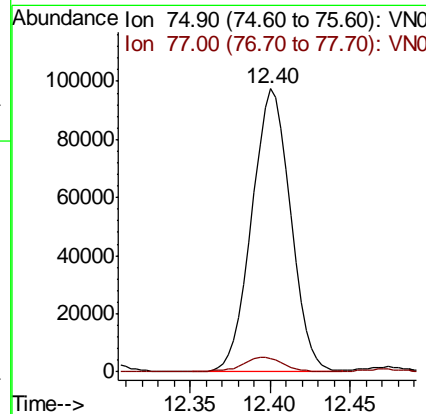
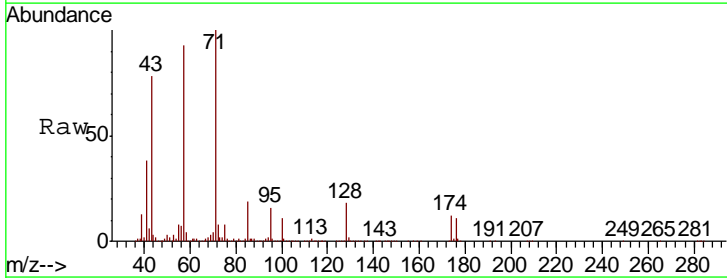
Instrument :  
 MSVOA\_N  
 ClientSampled :

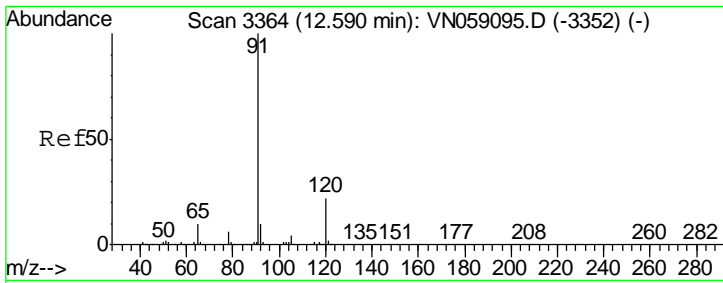
Tgt Ion	Resp	Lower	Upper
83	161306		
131	0.0	4.9	14.6#
85	0.0	32.4	97.2#



#76  
 1,2,3-Trichloropropane  
 Concen: 22.608 ug/l  
 RT: 12.40 min Scan# 3305  
 Delta R.T. -0.15 min  
 Lab File: VN059288.D  
 Acq: 18 Nov 2019 16:50

Tgt Ion	Resp	Lower	Upper
75	162032		
77	5.1	0.0	0.0#

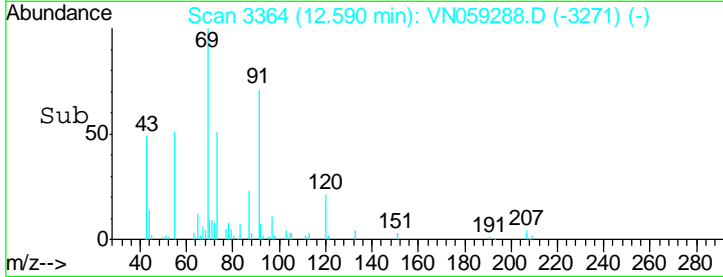
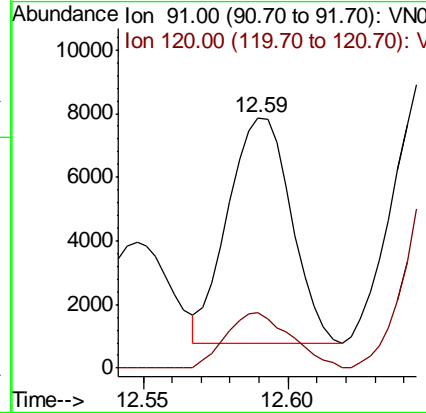
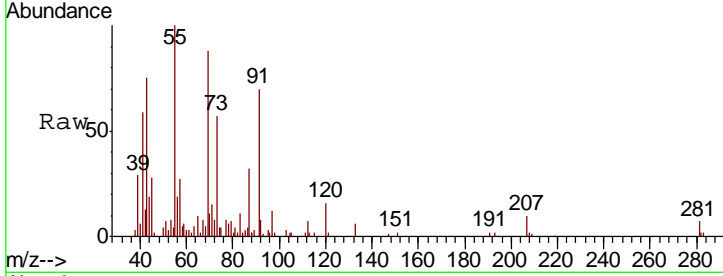




#78  
 n-propylbenzene  
 Concen: 0.409 ug/l  
 RT: 12.59 min Scan# 3364  
 Delta R.T. -0.00 min  
 Lab File: VN059288.D  
 Acq: 18 Nov 2019 16:50

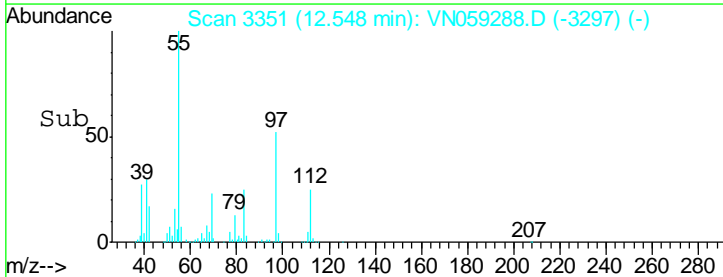
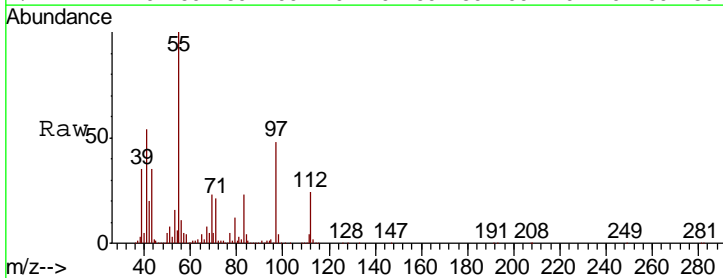
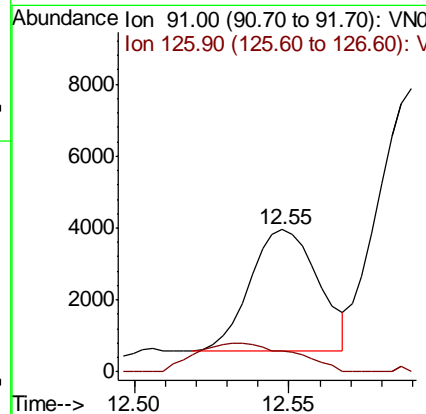
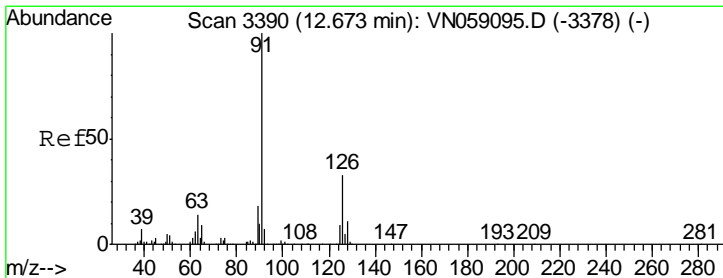
Instrument : MSVOA\_N  
 ClientSampled :

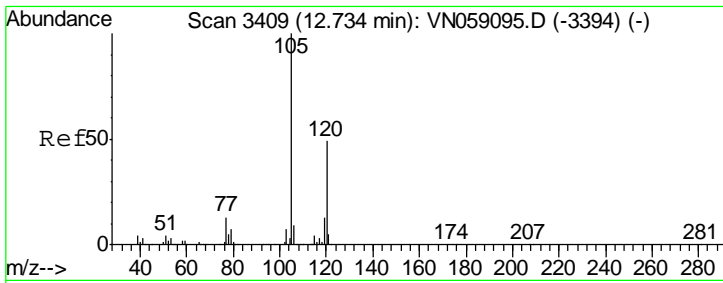
Tgt Ion	Resp	Lower	Upper
91	10723		
120	25.4	11.2	33.5



#79  
 2-Chlorotoluene  
 Concen: 0.322 ug/l  
 RT: 12.55 min Scan# 3351  
 Delta R.T. -0.13 min  
 Lab File: VN059288.D  
 Acq: 18 Nov 2019 16:50

Tgt Ion	Resp	Lower	Upper
91	5233		
126	34.0	16.7	50.1

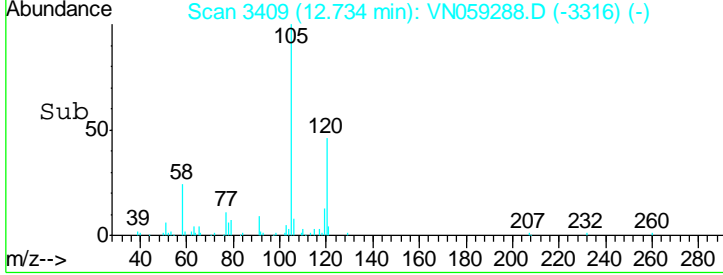
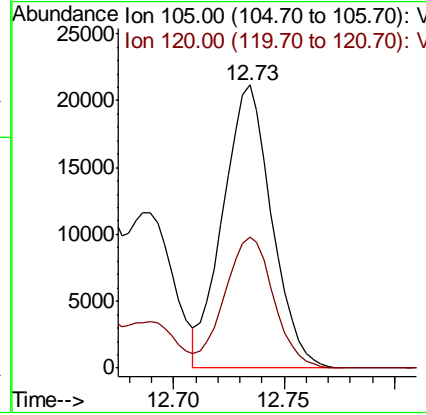
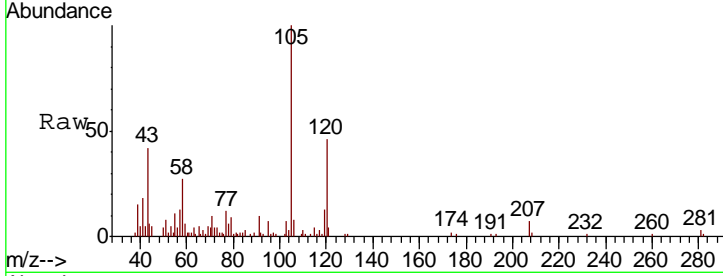




#80  
 1,3,5-Trimethylbenzene  
 Concen: 1.675 ug/l  
 RT: 12.73 min Scan# 3409  
 Delta R.T. -0.00 min  
 Lab File: VN059288.D  
 Acq: 18 Nov 2019 16:50

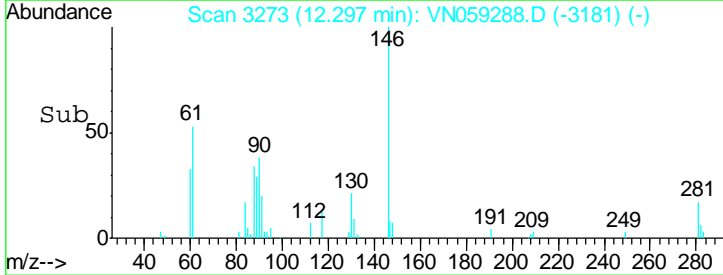
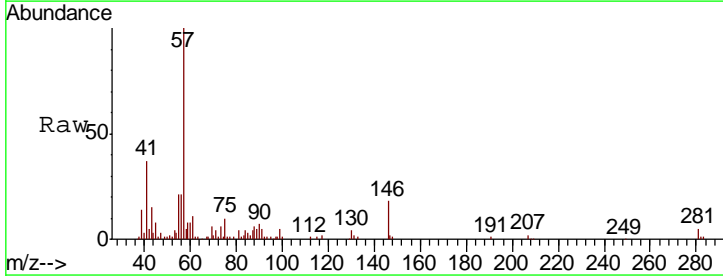
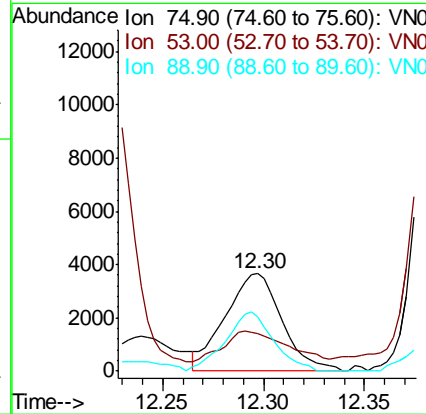
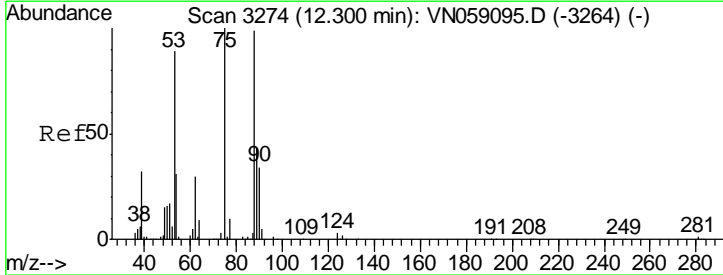
Instrument : MSVOA\_N  
 Client Sampled :

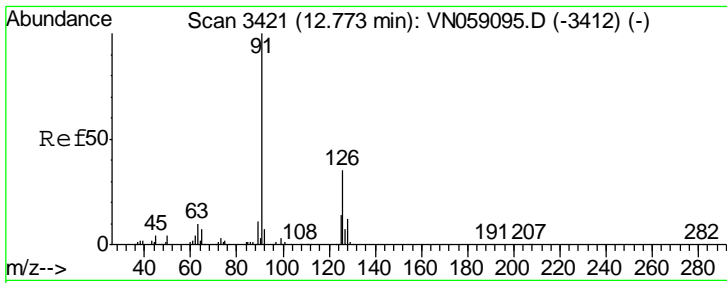
Tgt Ion	Resp	Lower	Upper
105	100		
120	46.7	24.0	72.0



#81  
 trans-1,4-Dichloro-2-butene  
 Concen: 2.659 ug/l  
 RT: 12.30 min Scan# 3273  
 Delta R.T. -0.00 min  
 Lab File: VN059288.D  
 Acq: 18 Nov 2019 16:50

Tgt Ion	Resp	Lower	Upper
75	100		
53	0.0	72.2	108.2#
89	0.0	35.8	53.8#

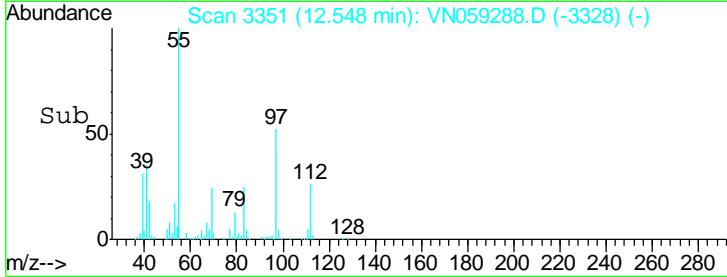
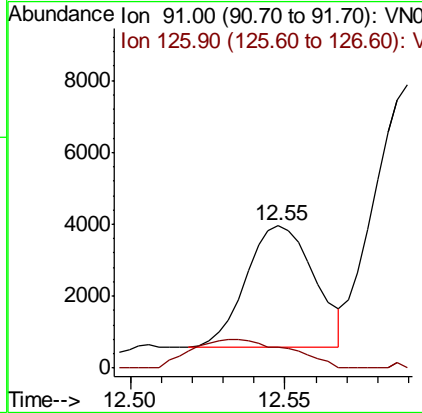
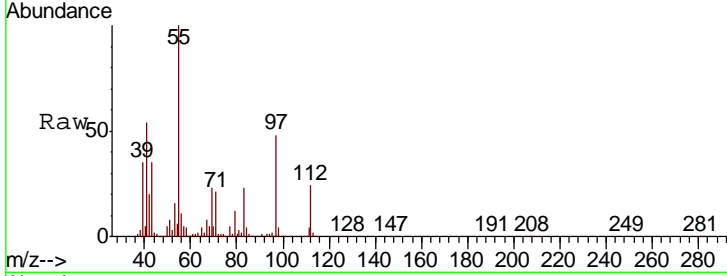




#82  
 4-Chlorotoluene  
 Concen: 0.321 ug/l  
 RT: 12.55 min Scan# 3351  
 Delta R.T. -0.23 min  
 Lab File: VN059288.D  
 Acq: 18 Nov 2019 16:50

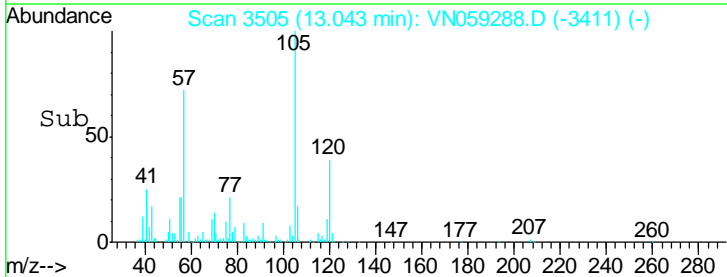
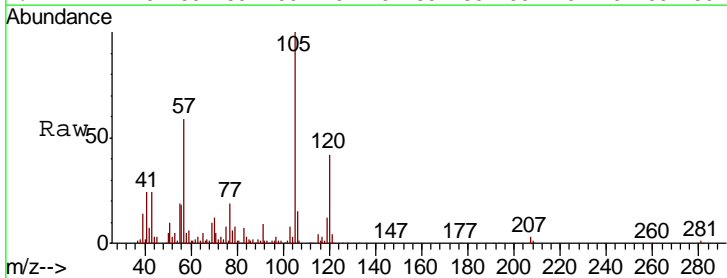
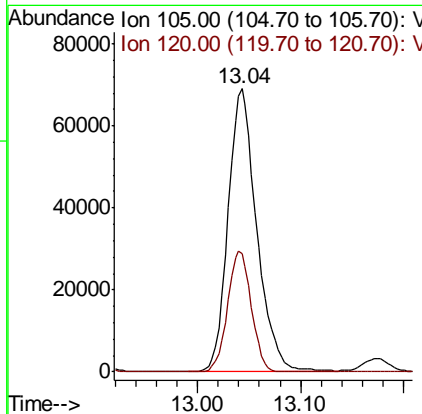
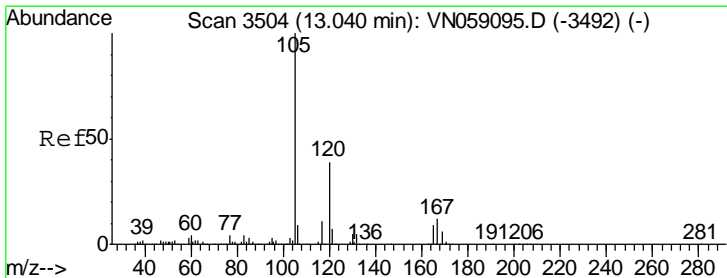
Instrument : MSVOA\_N  
 ClientSampled :

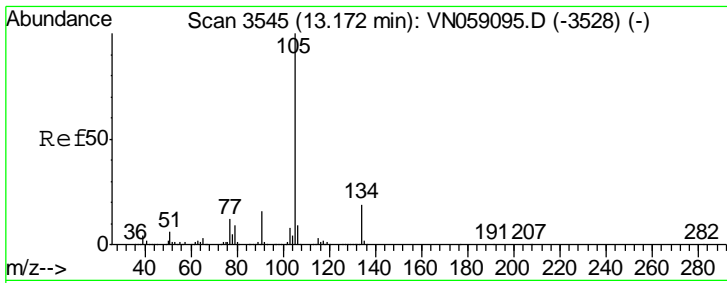
Tgt Ion	Resp	Lower	Upper
91	100		
126	34.0	16.1	48.2



#84  
 1,2,4-Trimethylbenzene  
 Concen: 7.137 ug/l  
 RT: 13.04 min Scan# 3505  
 Delta R.T. 0.00 min  
 Lab File: VN059288.D  
 Acq: 18 Nov 2019 16:50

Tgt Ion	Resp	Lower	Upper
105	100		
120	35.2	22.8	68.4

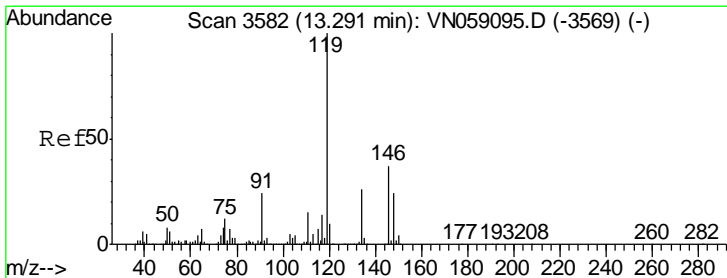
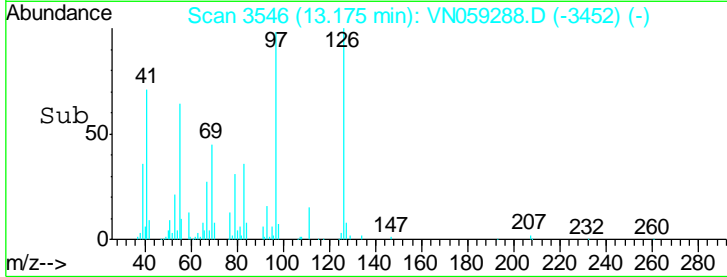
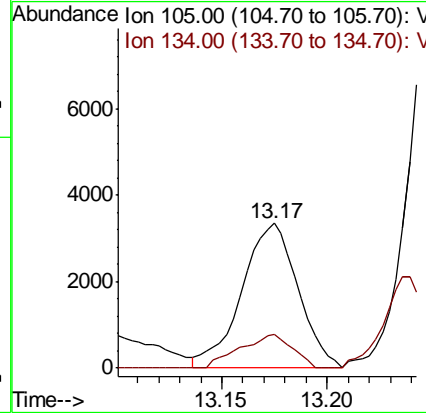
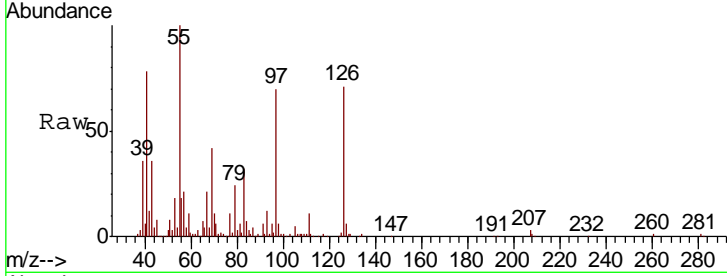




#85  
 sec-Butylbenzene  
 Concen: 0.285 ug/l  
 RT: 13.17 min Scan# 3546  
 Delta R.T. 0.00 min  
 Lab File: VN059288.D  
 Acq: 18 Nov 2019 16:50

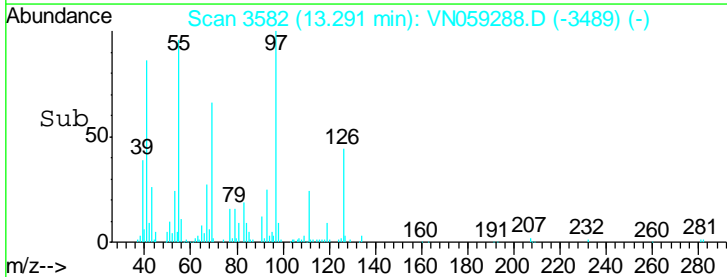
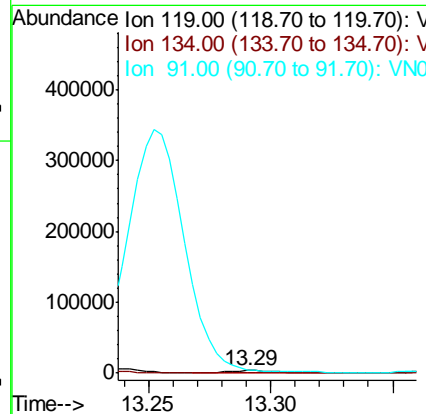
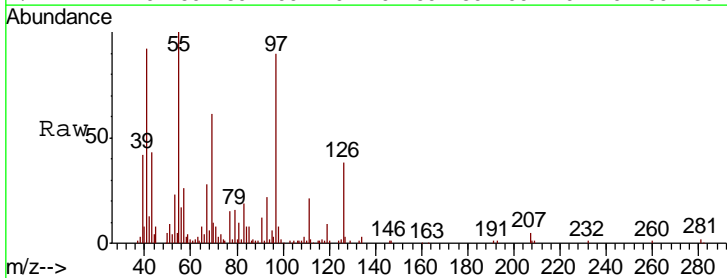
Instrument : MSVOA\_N  
 ClientSampled :

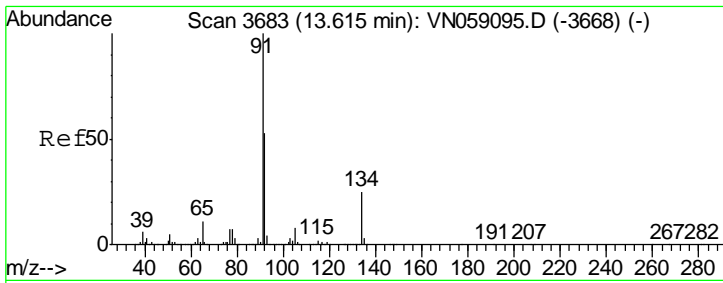
Tgt Ion	Resp	Lower	Upper
105	6214		
134	21.7	9.7	29.1



#86  
 p-Isopropyltoluene  
 Concen: 0.287 ug/l  
 RT: 13.29 min Scan# 3582  
 Delta R.T. -0.00 min  
 Lab File: VN059288.D  
 Acq: 18 Nov 2019 16:50

Tgt Ion	Resp	Lower	Upper
119	5530		
134	26.3	13.0	38.9
91	0.0	11.7	35.1#

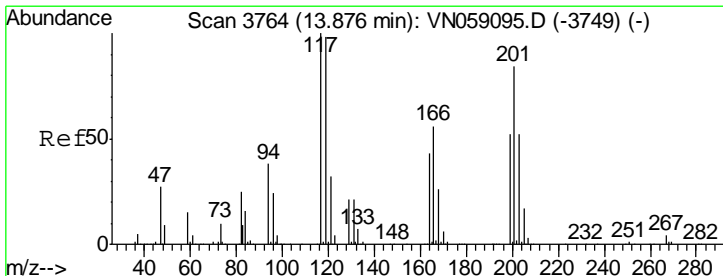
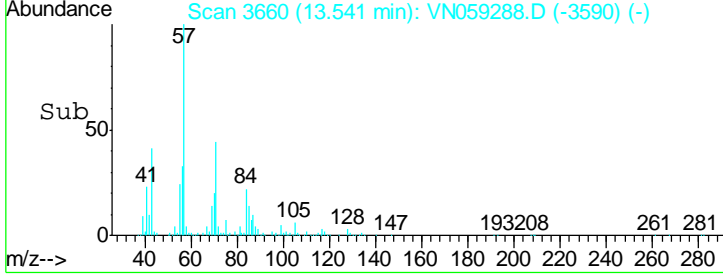
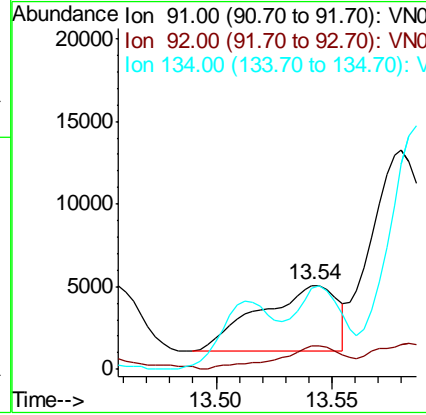
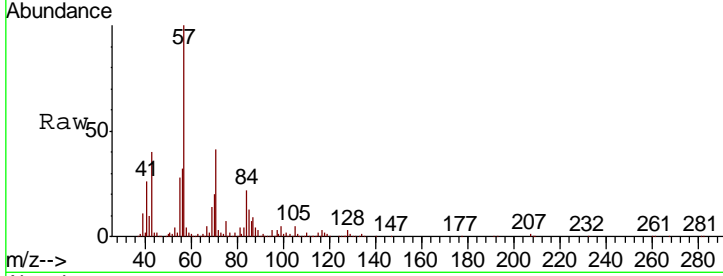




#89  
 n-Butylbenzene  
 Concen: 0.561 ug/l  
 RT: 13.54 min Scan# 3660  
 Delta R.T. -0.07 min  
 Lab File: VN059288.D  
 Acq: 18 Nov 2019 16:50

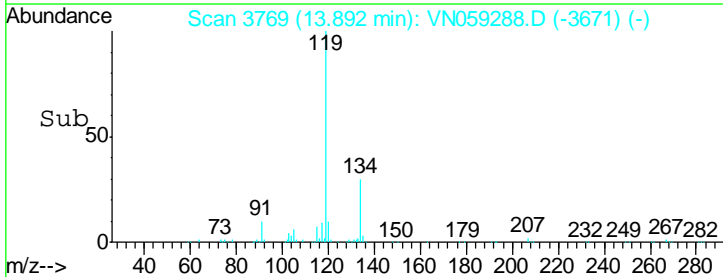
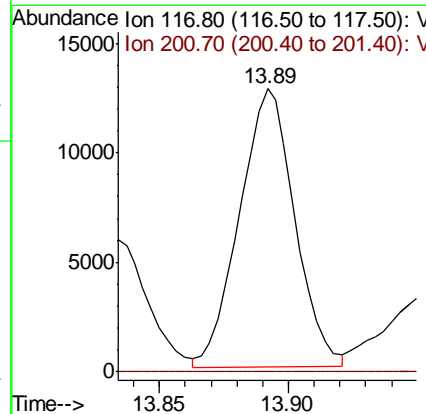
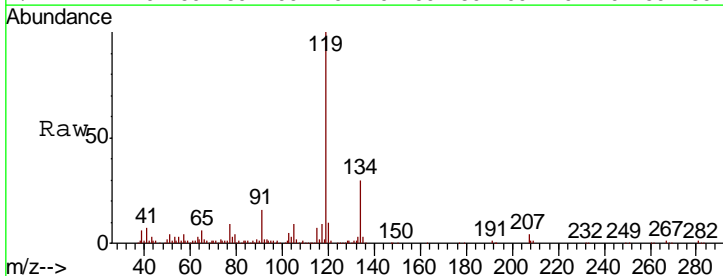
Instrument : MSVOA\_N  
 ClientSampled :

Tgt Ion	Resp	Lower	Upper
91	100		
92	29.9	26.1	78.3
134	35.3	12.6	37.8

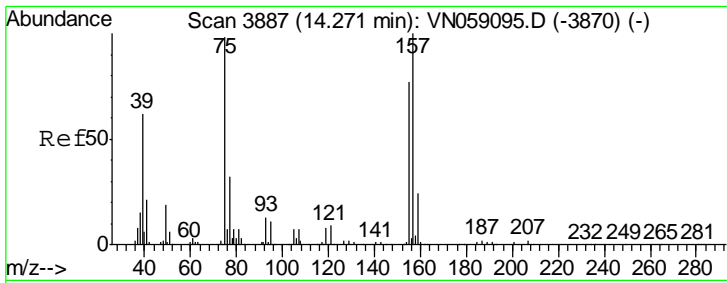


#90  
 Hexachloroethane  
 Concen: 4.921 ug/l  
 RT: 13.89 min Scan# 3769  
 Delta R.T. 0.02 min  
 Lab File: VN059288.D  
 Acq: 18 Nov 2019 16:50

Tgt Ion	Resp	Lower	Upper
117	100		
201	0.0	41.8	125.3#



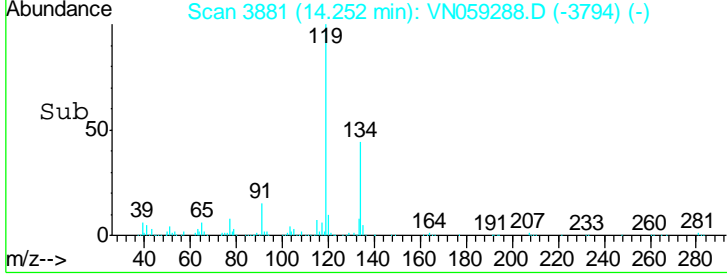
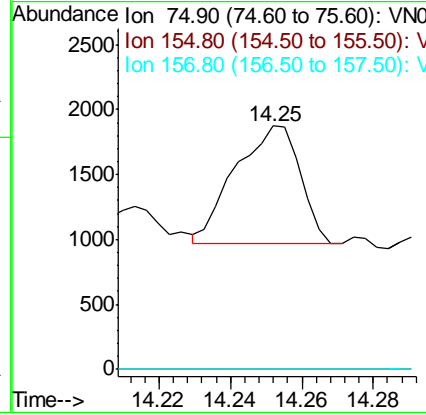
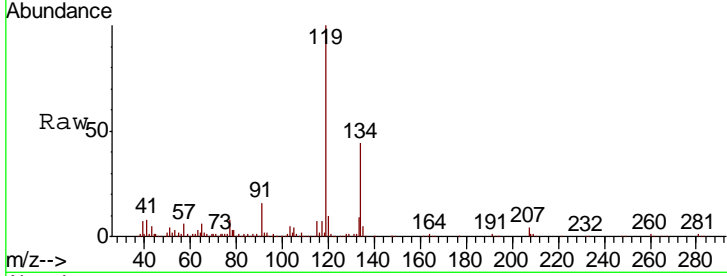




#92  
 1,2-Dibromo-3-Chloropropane  
 Concen: 0.759 ug/l  
 RT: 14.25 min Scan# 3881  
 Delta R.T. -0.02 min  
 Lab File: VN059288.D  
 Acq: 18 Nov 2019 16:50

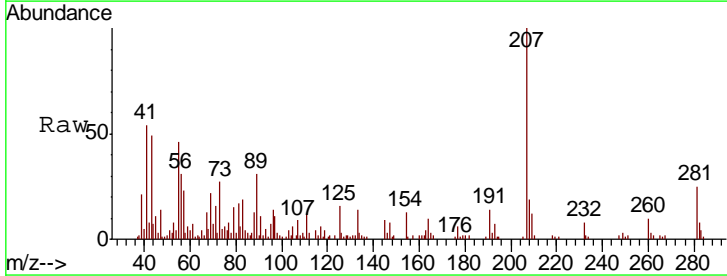
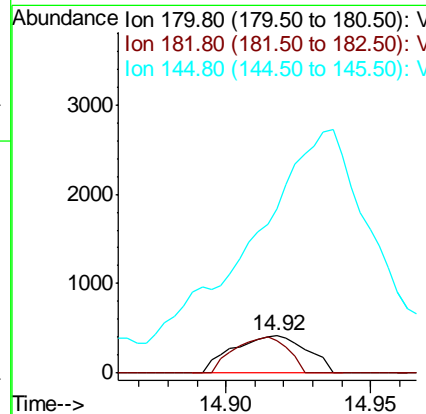
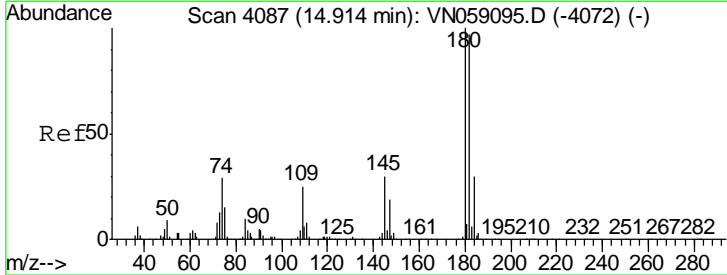
Instrument :  
 MSVOA\_N  
 ClientSampled :

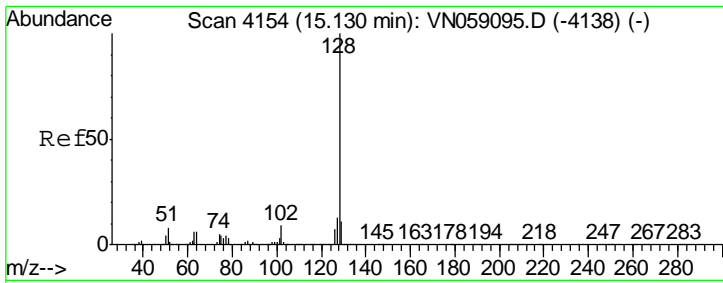
Tgt Ion	Resp	Lower	Upper
75	100		
155	0.0	40.2	120.6#
157	0.0	51.8	155.5#



#93  
 1,2,4-Trichlorobenzene  
 Concen: 3.165 ug/l  
 RT: 14.92 min Scan# 4088  
 Delta R.T. 0.00 min  
 Lab File: VN059288.D  
 Acq: 18 Nov 2019 16:50

Tgt Ion	Resp	Lower	Upper
180	100		
182	68.6	48.1	144.3
145	0.0	15.1	45.3#





#95  
 Naphthalene  
 Concen: 8.535 ug/l  
 RT: 15.13 min Scan# 4154  
 Delta R.T. 0.00 min  
 Lab File: VN059288.D  
 Acq: 18 Nov 2019 16:50

Instrument : MSVOA\_N  
 ClientSampled :

Tot Ion	Ratio	Lower	Upper
128	100		
127	13.6	10.2	15.2
129	16.1	8.6	12.8#

