

Data Path : Z:\voasrv\HPCHEM1\MSVOA_N\Data\VN111821\
 Data File : VN069556.D
 Acq On : 18 Nov 2021 16:34
 Operator : JC/MD
 Sample : M4739-03
 Misc : 5.00mL/MSVOA_N/WATER
 ALS Vial : 15 Sample Multiplier: 1

Instrument :
 MSVOA_N
 ClientSampleId :

Quant Time: Nov 19 03:19:18 2021
 Quant Method : Z:\voasrv\HPCHEM1\MSVOA_N\methods\82N110921W.M
 Quant Title : SW846 8260
 QLast Update : Tue Nov 09 18:18:22 2021
 Response via : Initial Calibration

Compound	R.T.	QIon	Response	Conc	Units	Dev(Min)
Internal Standards						
1) Pentafluorobenzene	8.088	168	1344630	50.000	ug/l	0.00
34) 1,4-Difluorobenzene	8.971	114	2369254	50.000	ug/l	0.00
63) Chlorobenzene-d5	11.746	117	2383764	50.000	ug/l	0.00
72) 1,4-Dichlorobenzene-d4	13.678	152	886144	50.000	ug/l	0.00
System Monitoring Compounds						
33) 1,2-Dichloroethane-d4	8.440	65	1001765	51.382	ug/l	0.00
Spiked Amount	50.000	Range 61 - 141	Recovery	=	102.760%	
35) Dibromofluoromethane	8.027	113	691331	48.652	ug/l	0.00
Spiked Amount	50.000	Range 69 - 133	Recovery	=	97.300%	
50) Toluene-d8	10.443	98	3029650	54.211	ug/l	0.00
Spiked Amount	50.000	Range 65 - 126	Recovery	=	108.420%	
62) 4-Bromofluorobenzene	12.733	95	1076177	52.418	ug/l	0.00
Spiked Amount	50.000	Range 58 - 135	Recovery	=	104.840%	
Target Compounds						
						Qvalue
11) Tert butyl alcohol	5.390	59	94865	27.003	ug/l	100
13) Acrolein	4.253	56	16461	27.196	ug/l	89
14) Allyl chloride	5.076	41	122326	5.077	ug/l #	62
15) Acrylonitrile	5.618	53	16139	1.794	ug/l #	41
16) Acetone	4.296	43	259674	24.686	ug/l	95
18) Methyl Acetate	5.074	43	263572	7.708	ug/l #	51
19) Methyl tert-butyl Ether	5.621	73	714148	15.484	ug/l #	64
22) Diisopropyl ether	6.501	45	1881656	36.253	ug/l	90
23) Vinyl Acetate	6.501	43	1046935	26.080	ug/l #	72
25) 2-Butanone	7.327	43	8495	0.596	ug/l #	60
27) cis-1,2-Dichloroethene	7.321	96	3183	0.211	ug/l	31
30) Chloroform	7.780	83	7473	0.276	ug/l #	18
31) Cyclohexane	8.088	56	67410	2.531	ug/l #	66
36) 1,1-Dichloropropene	8.086	75	114554	5.746	ug/l #	43
37) Ethyl Acetate	7.327	43	8495	0.315	ug/l #	1
38) Carbon Tetrachloride	8.088	117	140335	7.291	ug/l #	16
40) Benzene	8.464	78	67552	1.098	ug/l	97
43) Isopropyl Acetate	8.544	43	39879	0.921	ug/l #	55
48) Methyl methacrylate	9.590	41	4120	0.202	ug/l #	32
49) 1,4-Dioxane	9.588	88	106	39.311	ug/l #	1
52) Toluene	10.513	92	11773	0.307	ug/l	100
53) t-1,3-Dichloropropene	10.717	75	137	2.643	ug/l #	67
54) cis-1,3-Dichloropropene	10.215	75	55	1.735	ug/l #	16
55) 1,1,2-Trichloroethane	10.875	97	5047	0.327	ug/l #	19
56) Ethyl methacrylate	10.786	69	1791	2.112	ug/l #	24
58) 2-Chloroethyl Vinyl ether	10.062	63	81	22.780	ug/l #	45
59) 2-Hexanone	11.095	43	5516	8.168	ug/l	65
60) Dibromochloromethane	10.985	129	99	2.423	ug/l #	11
61) 1,2-Dibromoethane	11.328	107	67	1.075	ug/l #	2
68) m/p-Xylenes	11.958	106	8238	0.274	ug/l	88
70) Styrene	12.294	104	195	1.524	ug/l #	1
71) Bromoform	12.707	173	113	3.436	ug/l #	29
73) Isopropylbenzene	12.581	105	25715	0.364	ug/l	100
76) 1,2,3-Trichloropropane	12.733	75	604571	29.563	ug/l #	1
78) n-propylbenzene	12.921	91	30631	0.386	ug/l	96
79) 2-Chlorotoluene	12.921	91	30631	0.623	ug/l #	40

Data Path : Z:\voasrv\HPCHEM1\MSVOA_N\Data\VN111821\
 Data File : VN069556.D
 Acq On : 18 Nov 2021 16:34
 Operator : JC/MD
 Sample : M4739-03
 Misc : 5.00mL/MSVOA_N/WATER
 ALS Vial : 15 Sample Multiplier: 1

Instrument :
 MSVOA_N
 ClientSampleId :

Quant Time: Nov 19 03:19:18 2021
 Quant Method : Z:\voasrv\HPCHEM1\MSVOA_N\methods\82N110921W.M
 Quant Title : SW846 8260
 QLast Update : Tue Nov 09 18:18:22 2021
 Response via : Initial Calibration

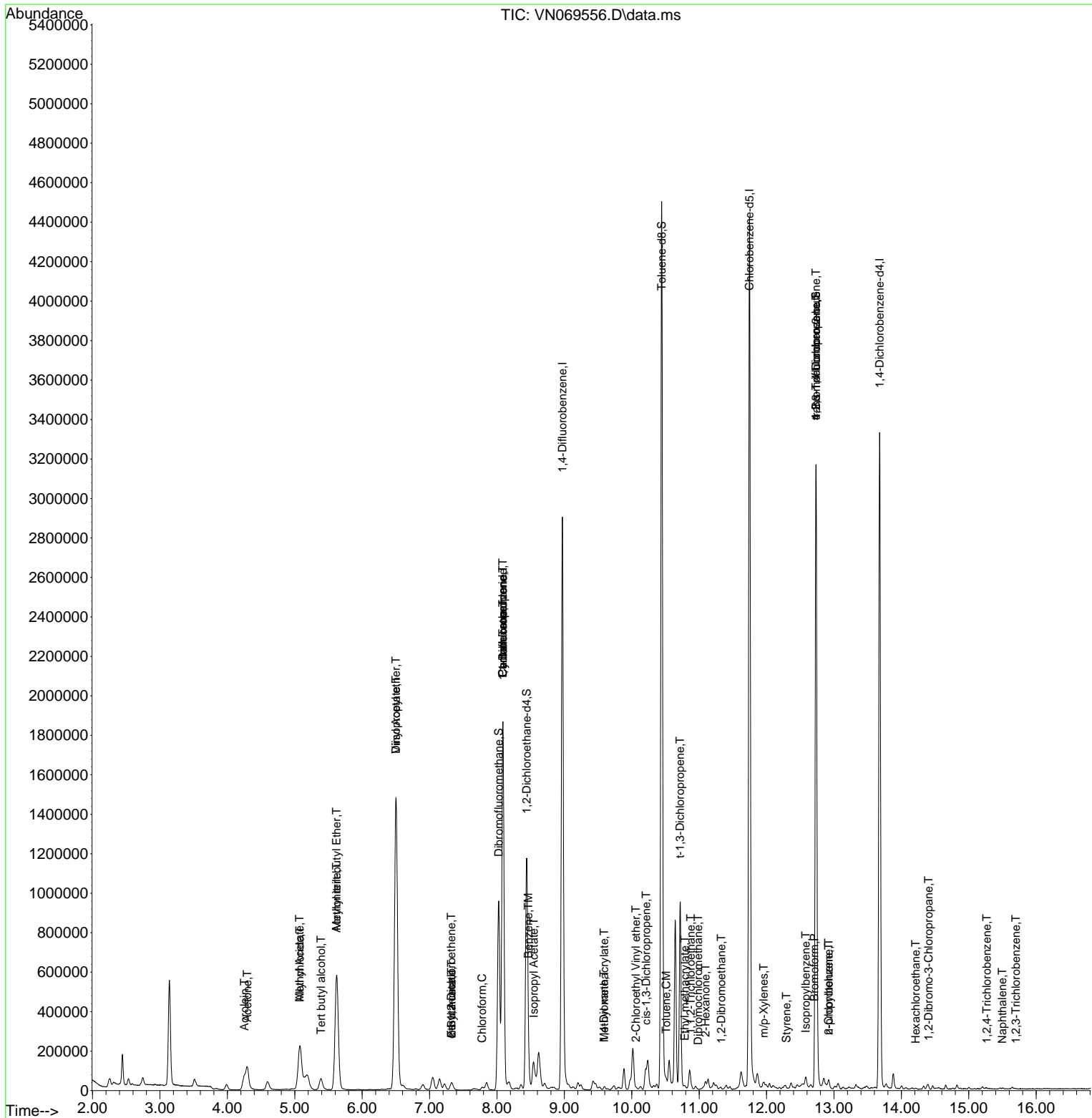
Compound	R.T.	QIon	Response	Conc	Units	Dev(Min)
81) trans-1,4-Dichloro-2-b...	12.733	75	604571	83.601	ug/l #	5
90) Hexachloroethane	14.211	117	283	2.189	ug/l #	6
92) 1,2-Dibromo-3-Chloropr...	14.402	75	54	1.809	ug/l #	1
93) 1,2,4-Trichlorobenzene	15.268	180	298	3.133	ug/l #	1
95) Naphthalene	15.499	128	1556	4.487	ug/l #	92
96) 1,2,3-Trichlorobenzene	15.700	180	184	3.182	ug/l #	1

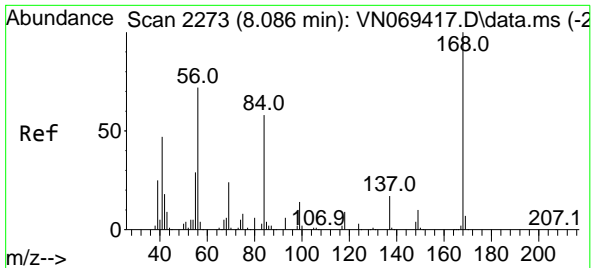
(#) = qualifier out of range (m) = manual integration (+) = signals summed

Data Path : Z:\voasrv\HPCHEM1\MSVOA_N\Data\VN111821\
 Data File : VN069556.D
 Acq On : 18 Nov 2021 16:34
 Operator : JC/MD
 Sample : M4739-03
 Misc : 5.00mL/MSVOA_N/WATER
 ALS Vial : 15 Sample Multiplier: 1

Instrument :
 MSVOA_N
 ClientSampleId :

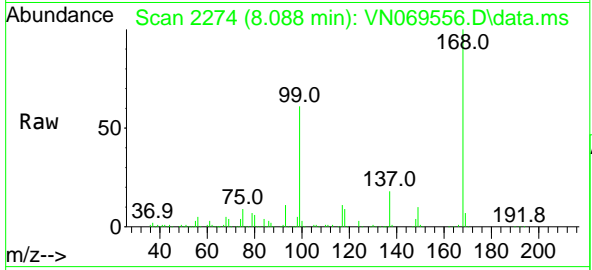
Quant Time: Nov 19 03:19:18 2021
 Quant Method : Z:\voasrv\HPCHEM1\MSVOA_N\methods\82N110921W.M
 Quant Title : SW846 8260
 QLast Update : Tue Nov 09 18:18:22 2021
 Response via : Initial Calibration



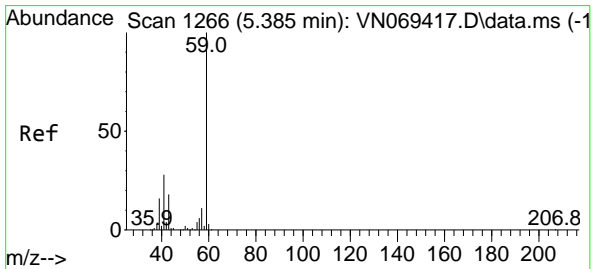
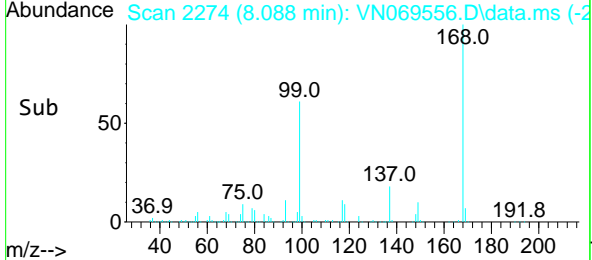
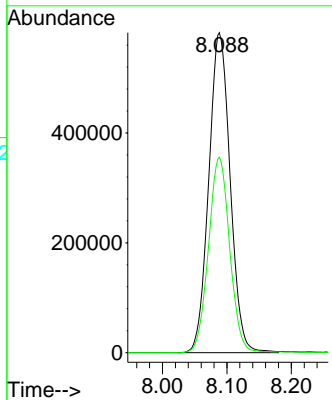


#1
 Pentafluorobenzene
 Concen: 50.000 ug/l
 RT: 8.088 min Scan# 21
 Delta R.T. 0.002 min
 Lab File: VN069556.D
 Acq: 18 Nov 2021 16:34

Instrument :
 MSVOA_N
 ClientSampleId :

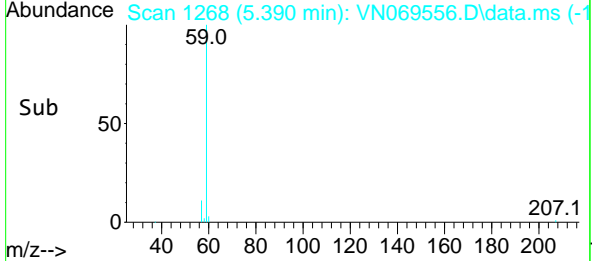
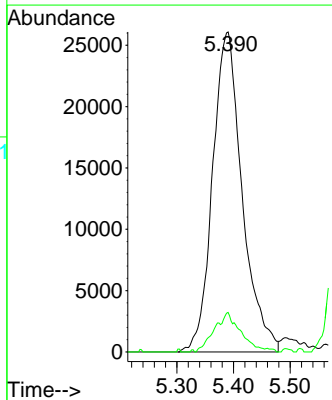
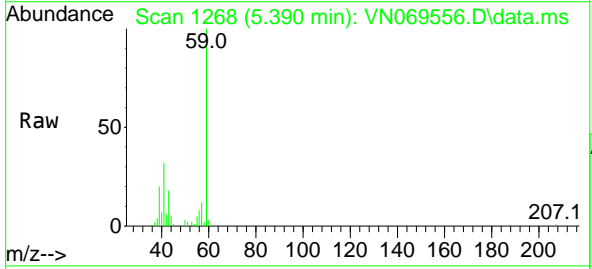


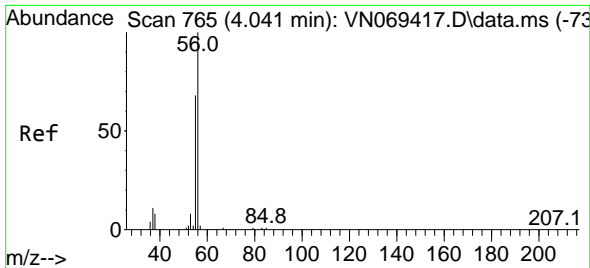
Tgt Ion:168 Resp: 1344630
 Ion Ratio Lower Upper
 168 100
 99 61.1 41.3 61.9



#11
 Tert butyl alcohol
 Concen: 27.003 ug/l
 RT: 5.390 min Scan# 1268
 Delta R.T. 0.005 min
 Lab File: VN069556.D
 Acq: 18 Nov 2021 16:34

Tgt Ion: 59 Resp: 94865
 Ion Ratio Lower Upper
 59 100
 57 10.9 8.7 13.1

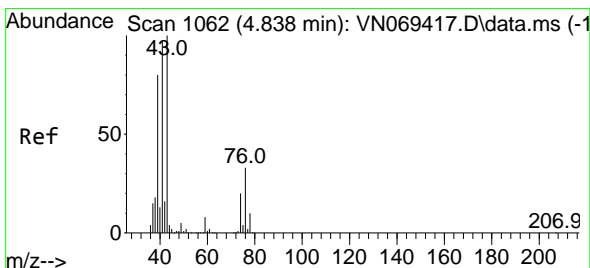
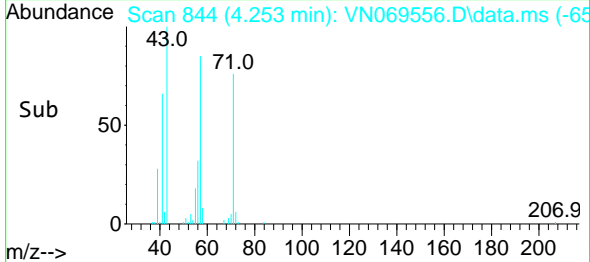
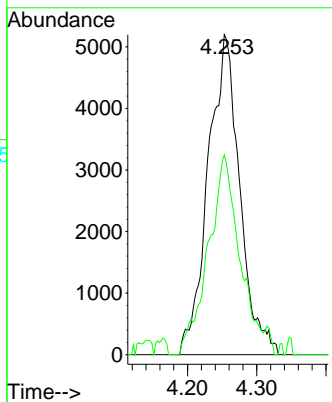
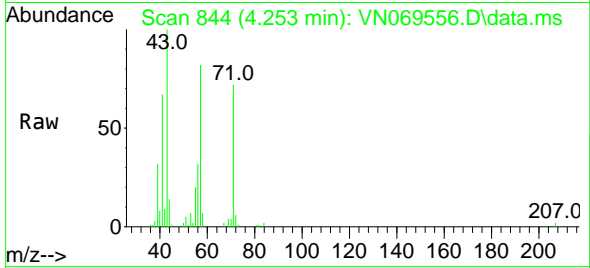




#13
 Acrolein
 Concen: 27.196 ug/l
 RT: 4.253 min Scan# 84
 Delta R.T. 0.212 min
 Lab File: VN069556.D
 Acq: 18 Nov 2021 16:34

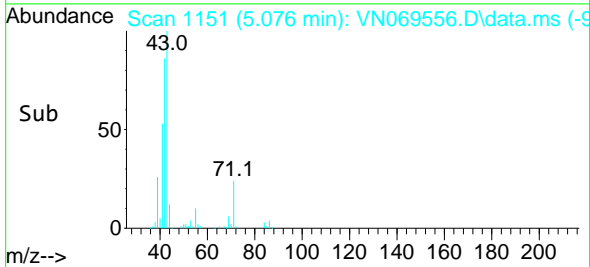
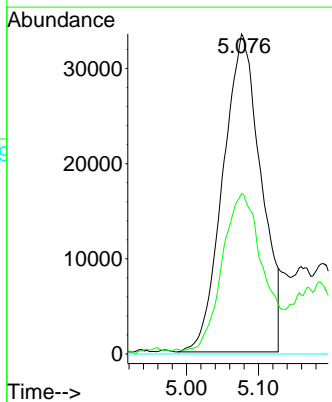
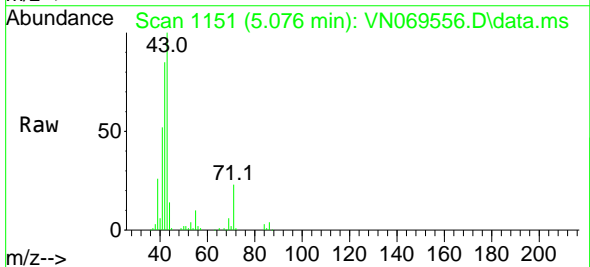
Instrument : MSVOA_N
 ClientSampleId :

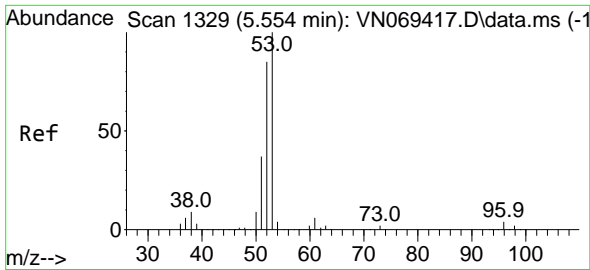
Tgt Ion: 56 Resp: 16461
 Ion Ratio Lower Upper
 56 100
 55 61.7 56.6 85.0



#14
 Allyl chloride
 Concen: 5.077 ug/l
 RT: 5.076 min Scan# 1151
 Delta R.T. 0.238 min
 Lab File: VN069556.D
 Acq: 18 Nov 2021 16:34

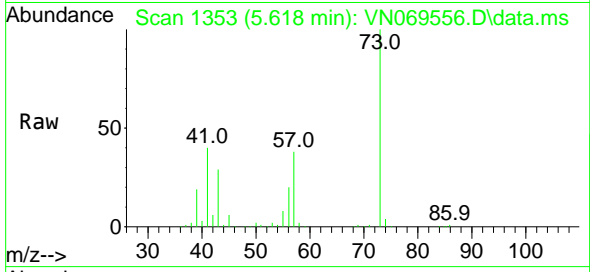
Tgt Ion: 41 Resp: 122326
 Ion Ratio Lower Upper
 41 100
 39 51.0 61.2 91.8#
 76 0.0 26.0 39.0#



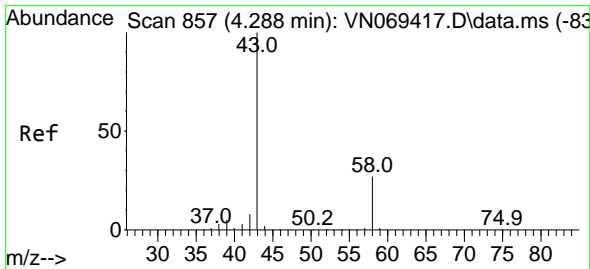
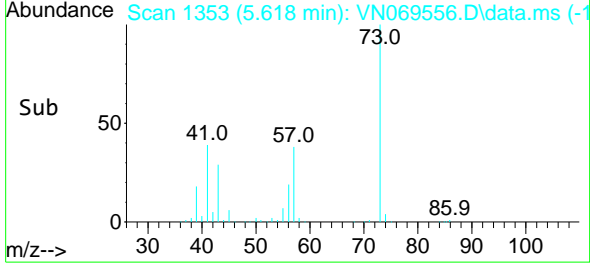
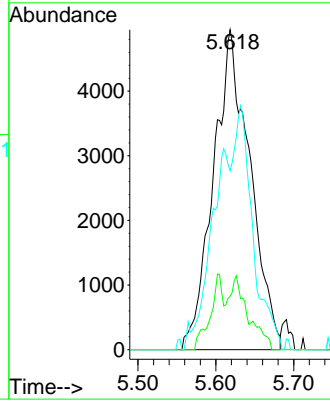


#15
 Acrylonitrile
 Concen: 1.794 ug/l
 RT: 5.618 min Scan# 11
 Delta R.T. 0.064 min
 Lab File: VN069556.D
 Acq: 18 Nov 2021 16:34

Instrument :
 MSVOA_N
 ClientSampleId :

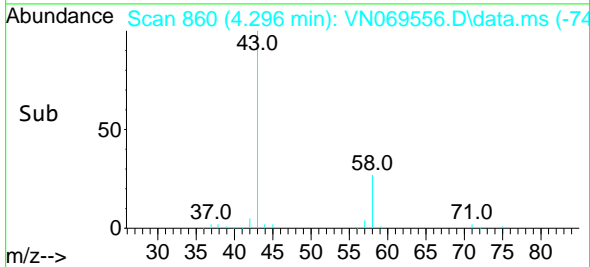
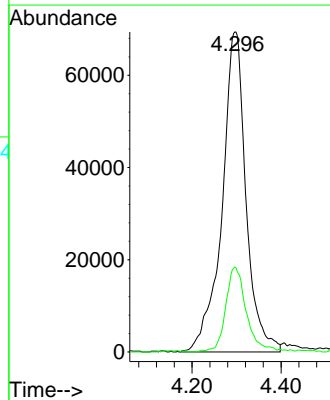
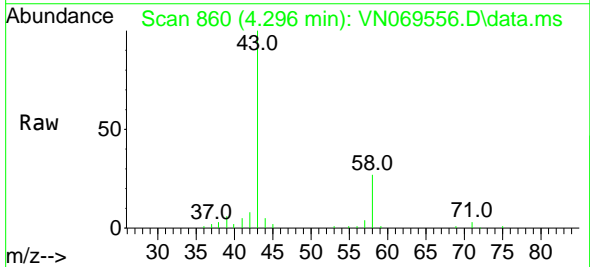


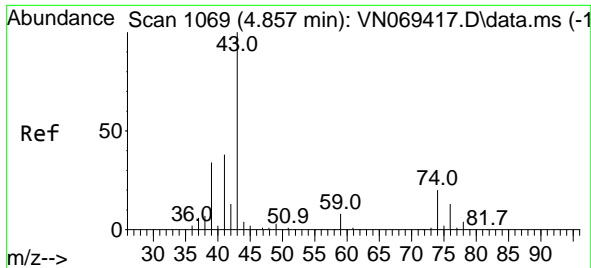
Tgt Ion: 53 Resp: 16139
 Ion Ratio Lower Upper
 53 100
 52 11.9 66.2 99.2#
 51 27.3 29.6 44.4#



#16
 Acetone
 Concen: 24.686 ug/l
 RT: 4.296 min Scan# 860
 Delta R.T. 0.008 min
 Lab File: VN069556.D
 Acq: 18 Nov 2021 16:34

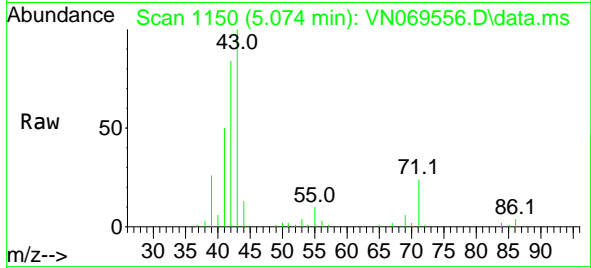
Tgt Ion: 43 Resp: 259674
 Ion Ratio Lower Upper
 43 100
 58 26.3 23.1 34.7



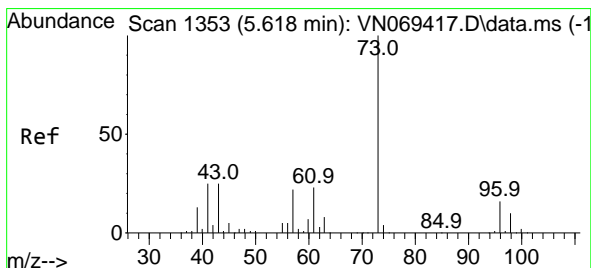
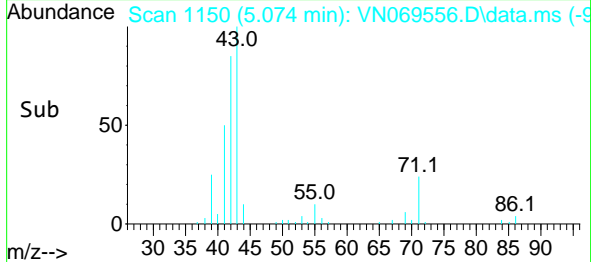
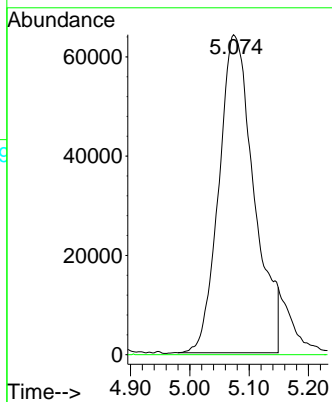


#18
 Methyl Acetate
 Concen: 7.708 ug/l
 RT: 5.074 min Scan# 1150
 Delta R.T. 0.217 min
 Lab File: VN069556.D
 Acq: 18 Nov 2021 16:34

Instrument :
 MSVOA_N
 ClientSampleId :

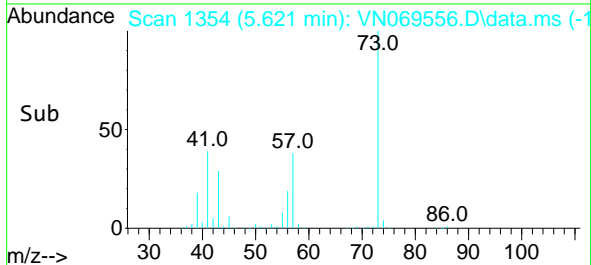
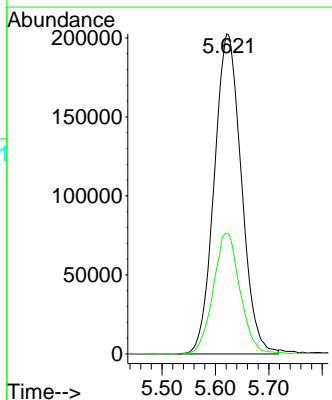
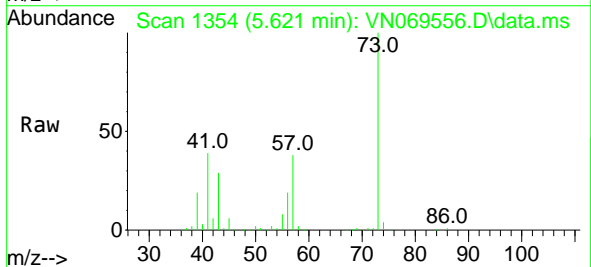


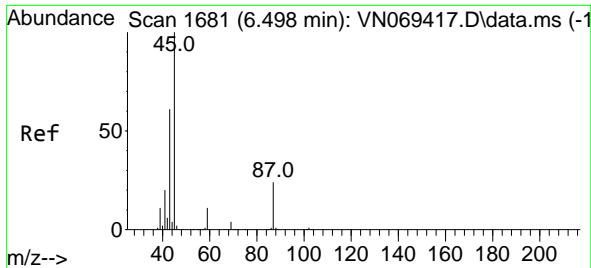
Tgt Ion: 43 Resp: 263572
 Ion Ratio Lower Upper
 43 100
 74 0.0 19.4 29.2#



#19
 Methyl tert-butyl Ether
 Concen: 15.484 ug/l
 RT: 5.621 min Scan# 1354
 Delta R.T. 0.003 min
 Lab File: VN069556.D
 Acq: 18 Nov 2021 16:34

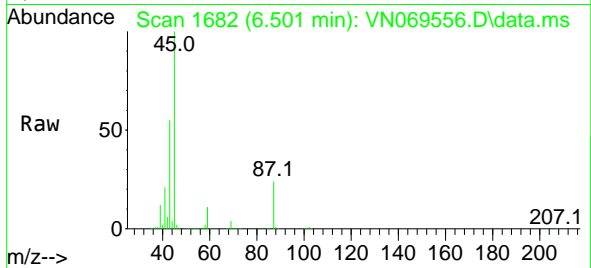
Tgt Ion: 73 Resp: 714148
 Ion Ratio Lower Upper
 73 100
 57 37.7 16.8 25.2#



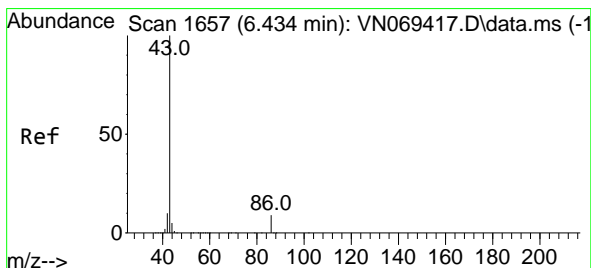
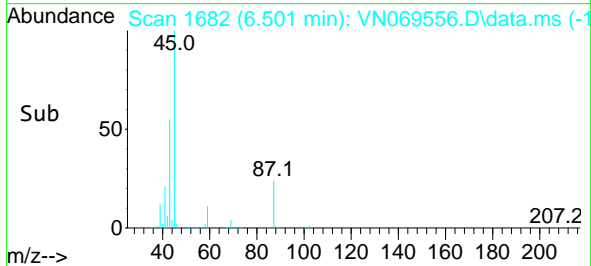
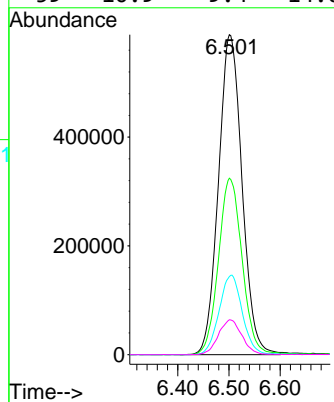


#22
 Diisopropyl ether
 Concen: 36.253 ug/l
 RT: 6.501 min Scan# 1682
 Delta R.T. 0.003 min
 Lab File: VN069556.D
 Acq: 18 Nov 2021 16:34

Instrument : MSVOA_N
 ClientSampleId :

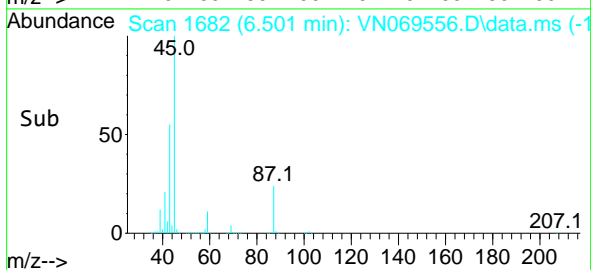
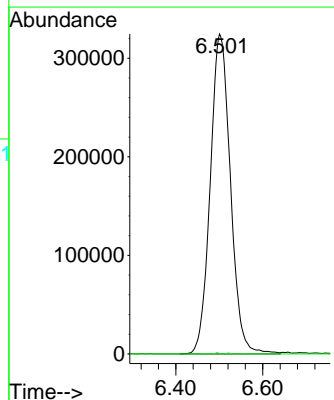
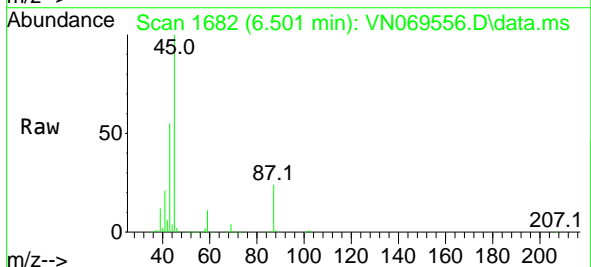


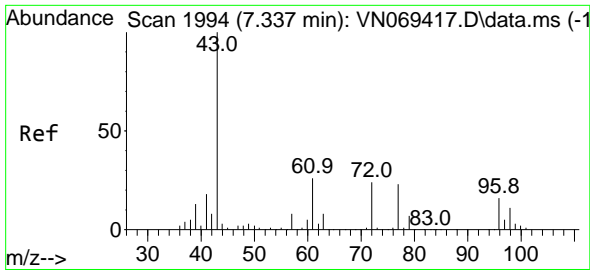
Tgt Ion: 45 Resp: 1881656
 Ion Ratio Lower Upper
 45 100
 43 55.2 51.7 77.5
 87 24.4 23.2 34.8
 59 10.9 9.4 14.0



#23
 Vinyl Acetate
 Concen: 26.080 ug/l
 RT: 6.501 min Scan# 1682
 Delta R.T. 0.067 min
 Lab File: VN069556.D
 Acq: 18 Nov 2021 16:34

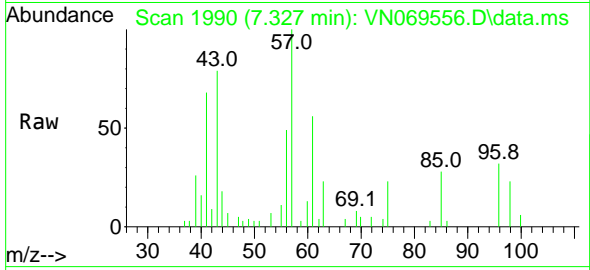
Tgt Ion: 43 Resp: 1046935
 Ion Ratio Lower Upper
 43 100
 86 0.0 8.5 12.7#



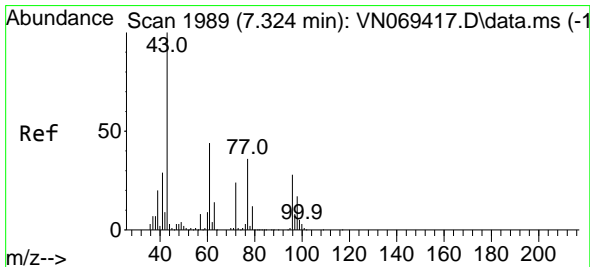
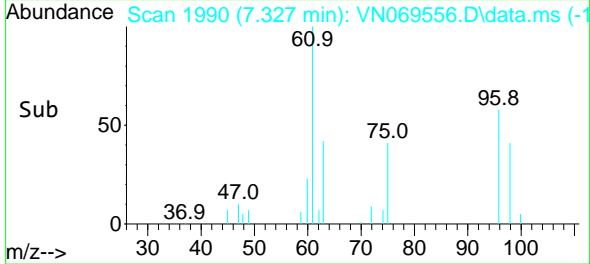
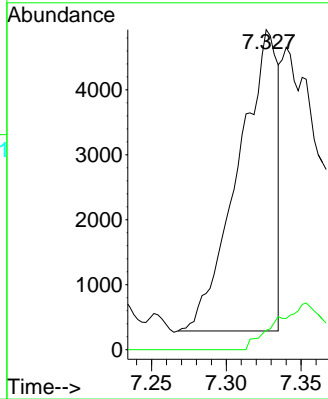


#25
 2-Butanone
 Concen: 0.596 ug/l
 RT: 7.327 min Scan# 1994
 Delta R.T. -0.010 min
 Lab File: VN069556.D
 Acq: 18 Nov 2021 16:34

Instrument : MSVOA_N
 ClientSampleId :

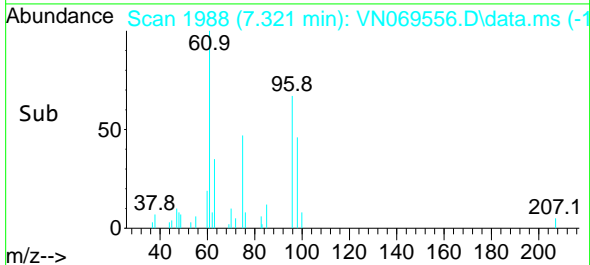
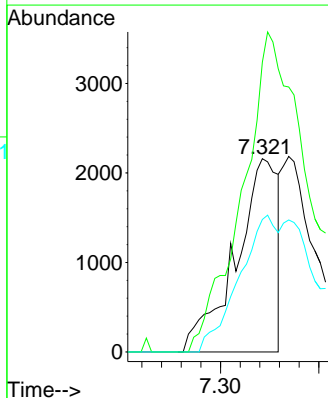
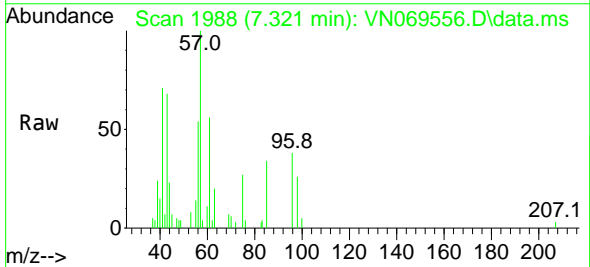


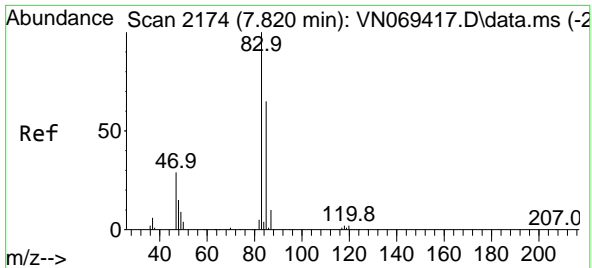
Tgt Ion: 43 Resp: 8495
 Ion Ratio Lower Upper
 43 100
 72 6.5 21.7 32.5#



#27
 cis-1,2-Dichloroethene
 Concen: 0.211 ug/l
 RT: 7.321 min Scan# 1988
 Delta R.T. -0.003 min
 Lab File: VN069556.D
 Acq: 18 Nov 2021 16:34

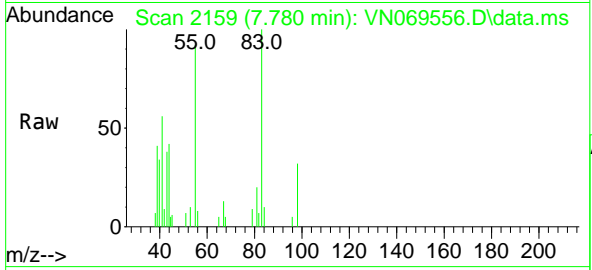
Tgt Ion: 96 Resp: 3183
 Ion Ratio Lower Upper
 96 100
 61 258.8 0.0 275.0
 98 65.2 0.0 129.6



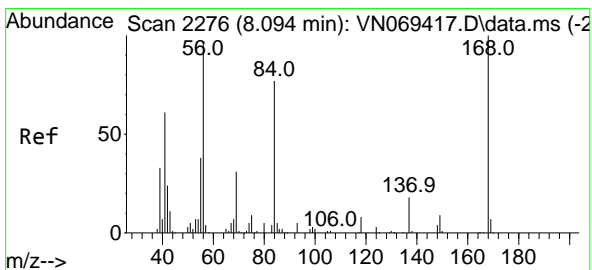
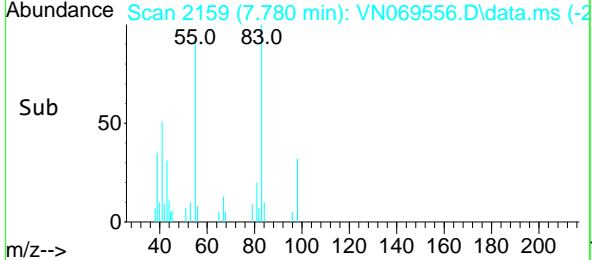
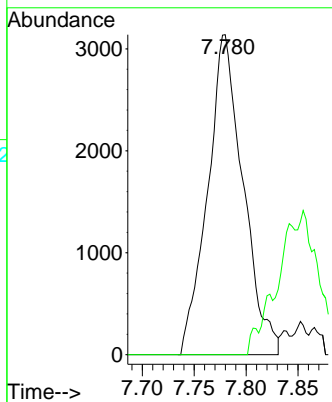


#30
 Chloroform
 Concen: 0.276 ug/l
 RT: 7.780 min Scan# 2174
 Delta R.T. -0.040 min
 Lab File: VN069556.D
 Acq: 18 Nov 2021 16:34

Instrument : MSVOA_N
 ClientSampleId :

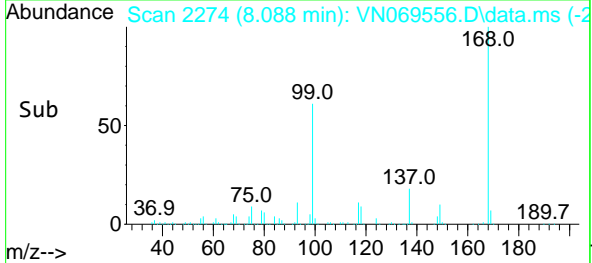
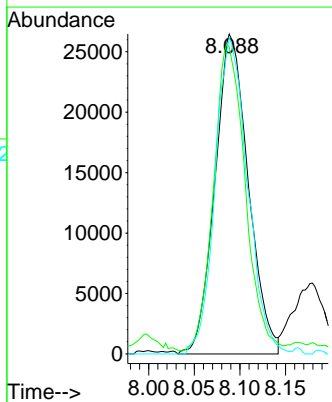
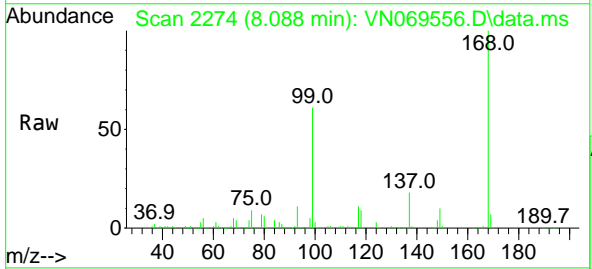


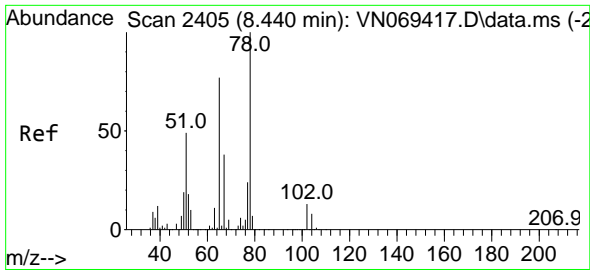
Tgt Ion: 83 Resp: 7473
 Ion Ratio Lower Upper
 83 100
 85 0.0 51.9 77.9#



#31
 Cyclohexane
 Concen: 2.531 ug/l
 RT: 8.088 min Scan# 2274
 Delta R.T. -0.006 min
 Lab File: VN069556.D
 Acq: 18 Nov 2021 16:34

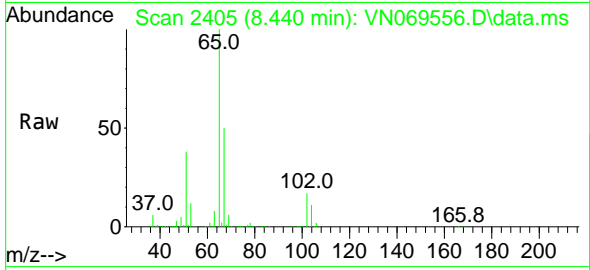
Tgt Ion: 56 Resp: 67410
 Ion Ratio Lower Upper
 56 100
 69 94.7 27.1 40.7#
 84 98.7 73.4 110.0



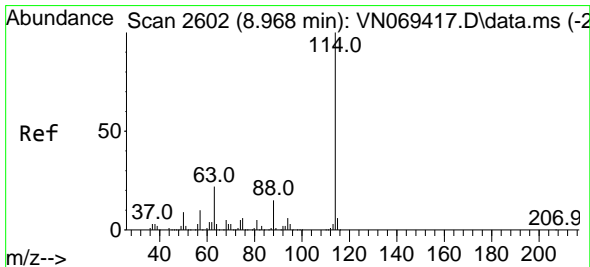
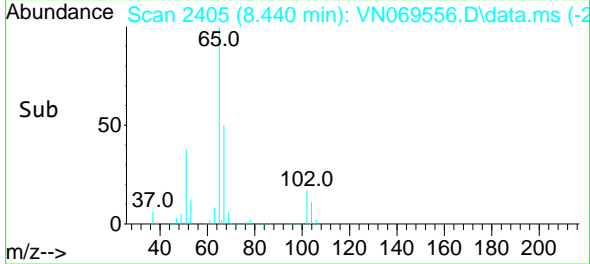
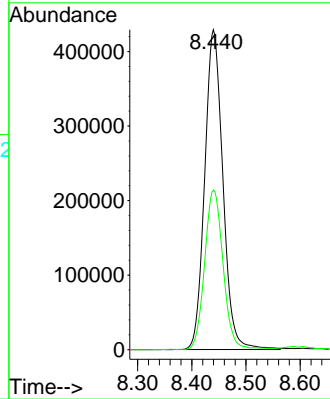


#33
 1,2-Dichloroethane-d4
 Concen: 51.382 ug/l
 RT: 8.440 min Scan# 2405
 Delta R.T. -0.000 min
 Lab File: VN069556.D
 Acq: 18 Nov 2021 16:34

Instrument :
 MSVOA_N
 ClientSampleId :

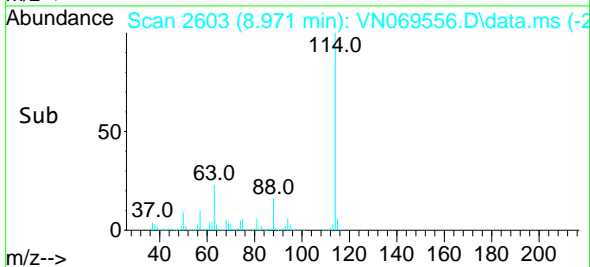
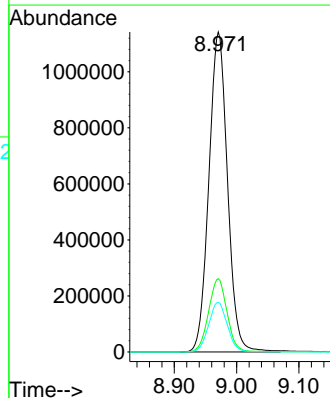
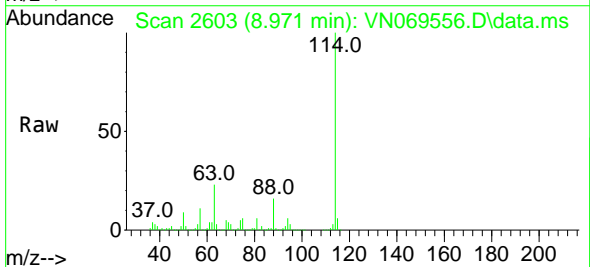


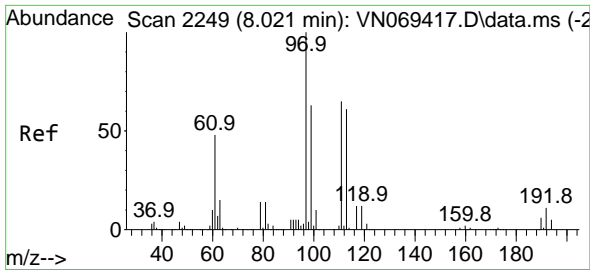
Tgt Ion: 65 Resp: 1001765
 Ion Ratio Lower Upper
 65 100
 67 50.2 0.0 103.0



#34
 1,4-Difluorobenzene
 Concen: 50.000 ug/l
 RT: 8.971 min Scan# 2603
 Delta R.T. 0.003 min
 Lab File: VN069556.D
 Acq: 18 Nov 2021 16:34

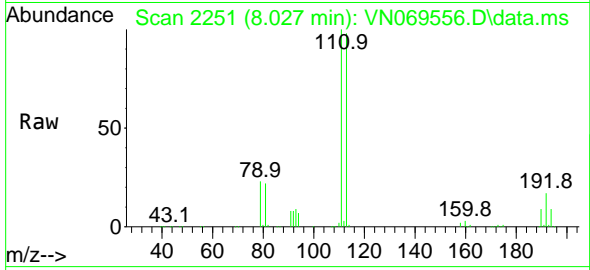
Tgt Ion: 114 Resp: 2369254
 Ion Ratio Lower Upper
 114 100
 63 22.9 0.0 37.8
 88 15.5 0.0 27.4



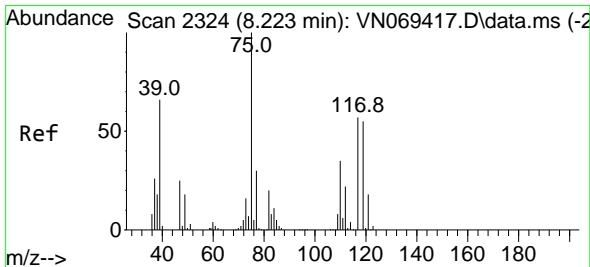
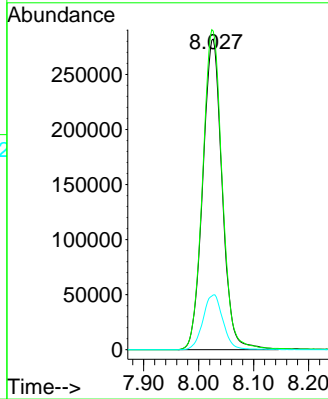
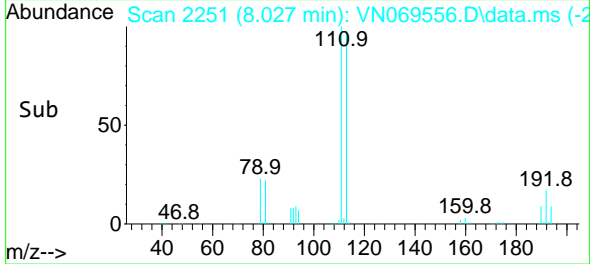


#35
 Dibromofluoromethane
 Concen: 48.652 ug/l
 RT: 8.027 min Scan# 211
 Delta R.T. 0.006 min
 Lab File: VN069556.D
 Acq: 18 Nov 2021 16:34

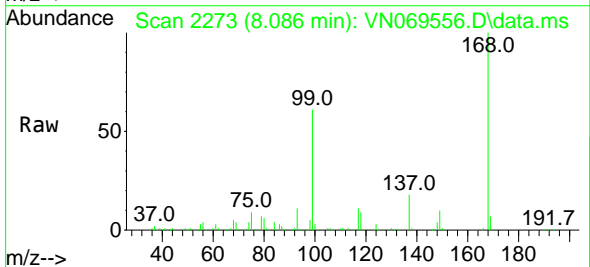
Instrument :
 MSVOA_N
 ClientSampleId :



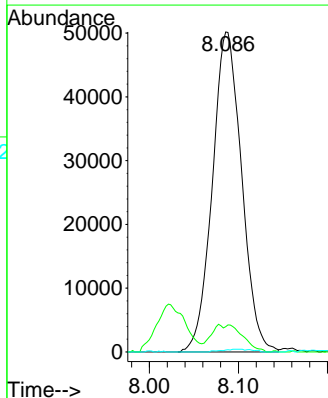
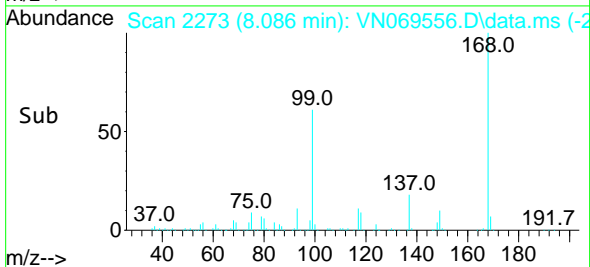
Tgt Ion:113 Resp: 691331
 Ion Ratio Lower Upper
 113 100
 111 103.6 82.2 123.2
 192 18.1 16.9 25.3

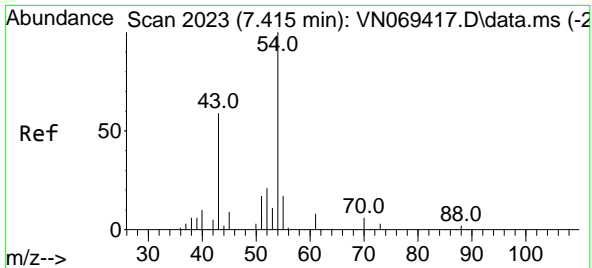


#36
 1,1-Dichloropropene
 Concen: 5.746 ug/l
 RT: 8.086 min Scan# 2273
 Delta R.T. -0.137 min
 Lab File: VN069556.D
 Acq: 18 Nov 2021 16:34



Tgt Ion: 75 Resp: 114554
 Ion Ratio Lower Upper
 75 100
 110 2.3 18.4 55.2#
 77 0.6 24.4 36.6#

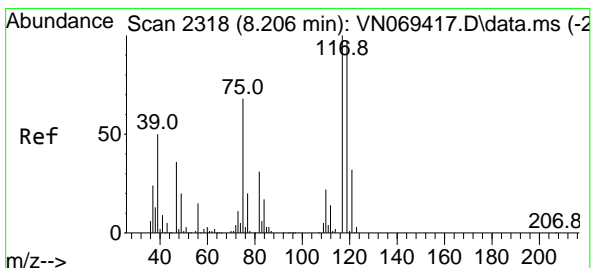
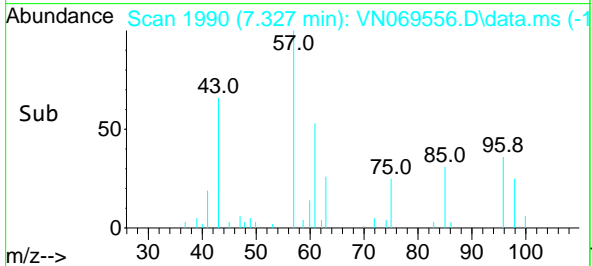
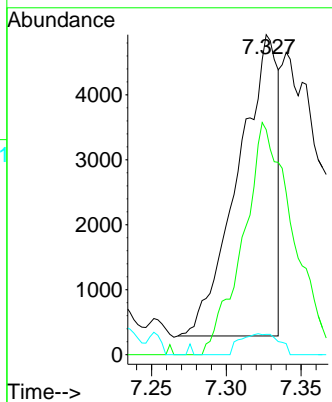
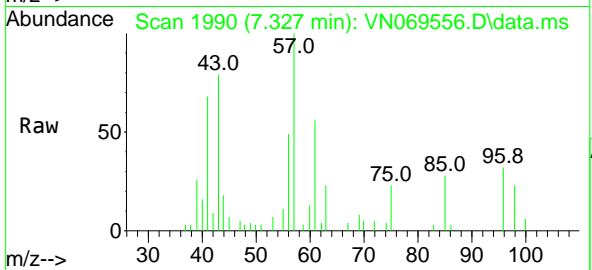




#37
 Ethyl Acetate
 Concen: 0.315 ug/l
 RT: 7.327 min Scan# 11
 Delta R.T. -0.088 min
 Lab File: VN069556.D
 Acq: 18 Nov 2021 16:34

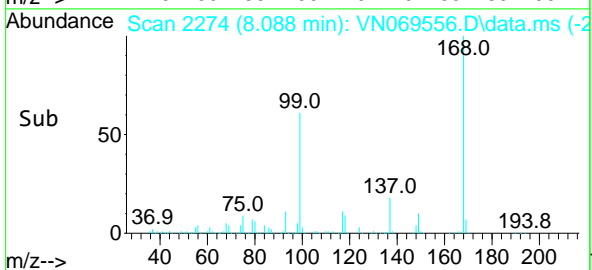
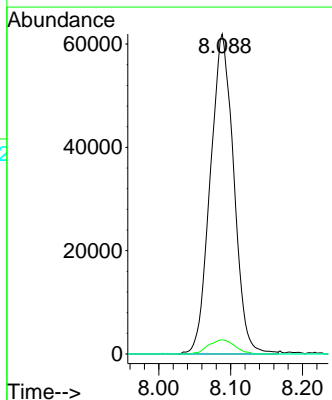
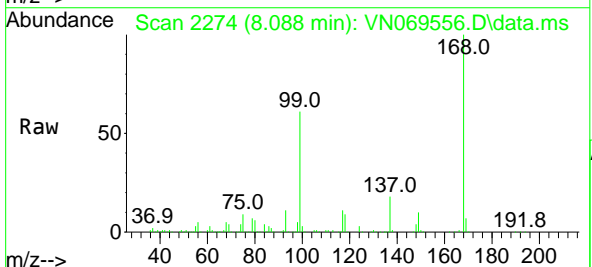
Instrument :
 MSVOA_N
 ClientSampleId :

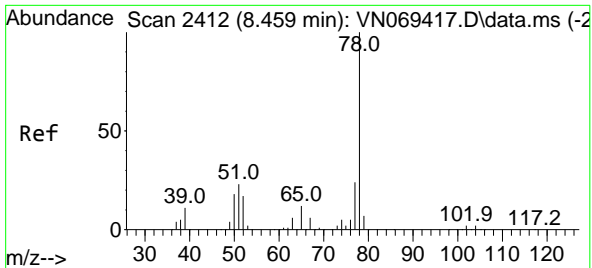
Tgt Ion	Resp	Lower	Upper
43	100		
61	97.0	11.5	17.3#
70	6.8	7.9	11.9#



#38
 Carbon Tetrachloride
 Concen: 7.291 ug/l
 RT: 8.088 min Scan# 2274
 Delta R.T. -0.118 min
 Lab File: VN069556.D
 Acq: 18 Nov 2021 16:34

Tgt Ion	Resp	Lower	Upper
117	100		
119	4.4	76.1	114.1#
121	0.0	24.2	36.2#

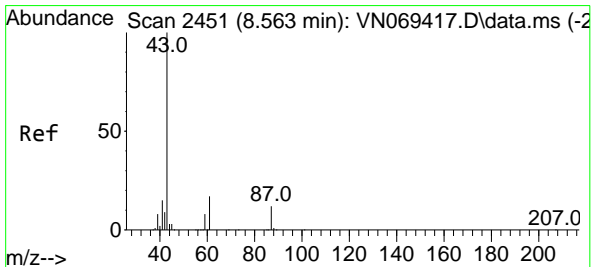
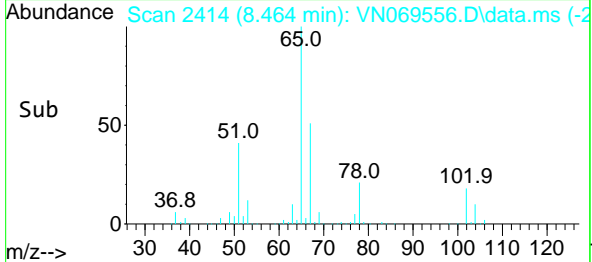
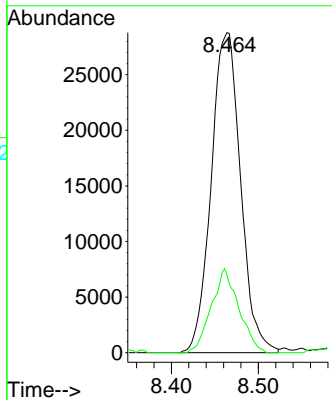
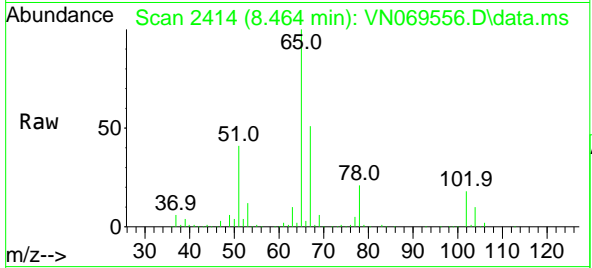




#40
 Benzene
 Concen: 1.098 ug/l
 RT: 8.464 min Scan# 2414
 Delta R.T. 0.005 min
 Lab File: VN069556.D
 Acq: 18 Nov 2021 16:34

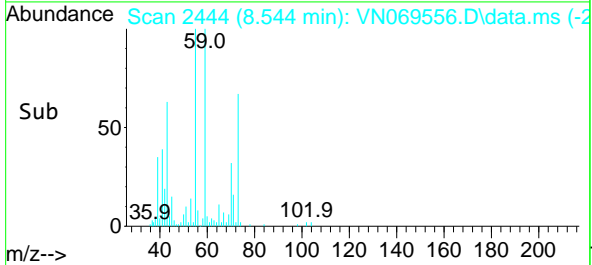
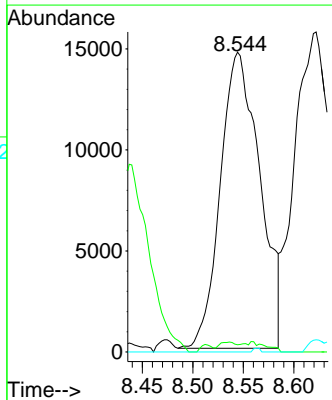
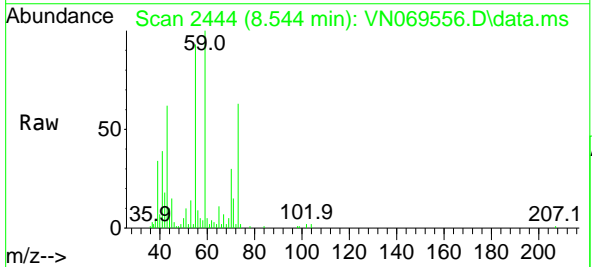
Instrument : MSVOA_N
 ClientSampleId :

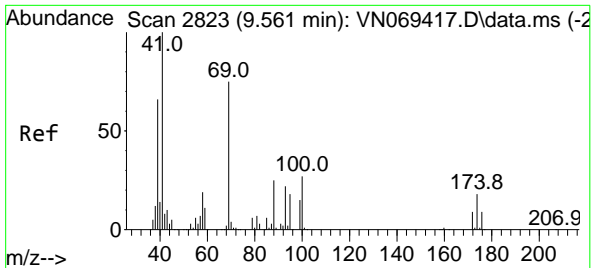
Tgt Ion: 78 Resp: 67552
 Ion Ratio Lower Upper
 78 100
 77 24.5 18.6 27.8



#43
 Isopropyl Acetate
 Concen: 0.921 ug/l
 RT: 8.544 min Scan# 2444
 Delta R.T. -0.019 min
 Lab File: VN069556.D
 Acq: 18 Nov 2021 16:34

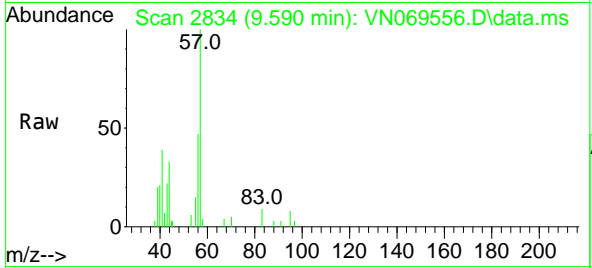
Tgt Ion: 43 Resp: 39879
 Ion Ratio Lower Upper
 43 100
 61 0.0 20.4 30.6#
 87 0.0 11.2 16.8#



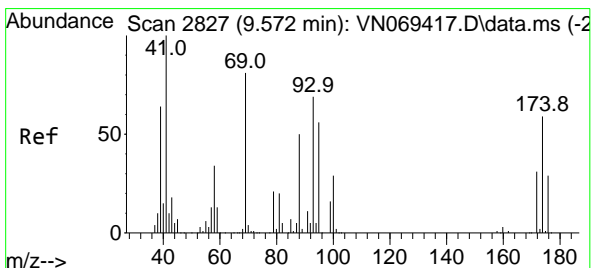
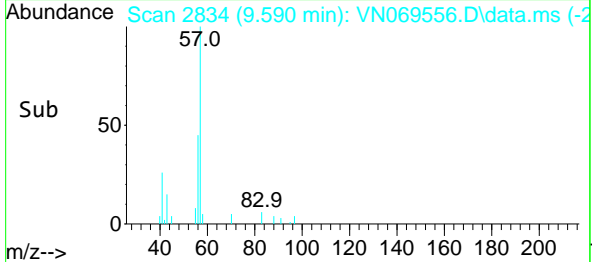
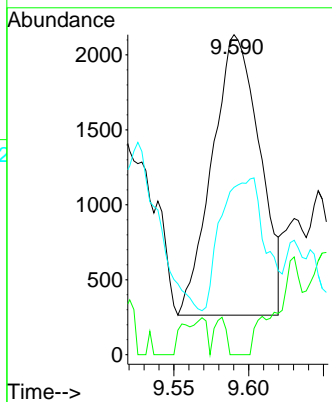


#48
 Methyl methacrylate
 Concen: 0.202 ug/l
 RT: 9.590 min Scan# 2834
 Delta R.T. 0.029 min
 Lab File: VN069556.D
 Acq: 18 Nov 2021 16:34

Instrument : MSVOA_N
 ClientSampleId :

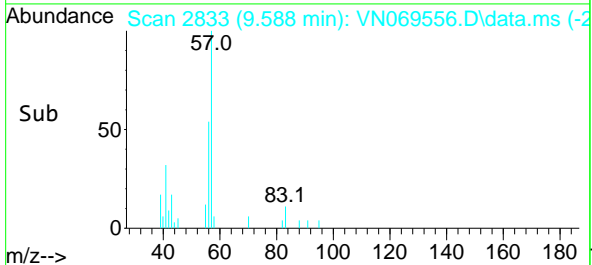
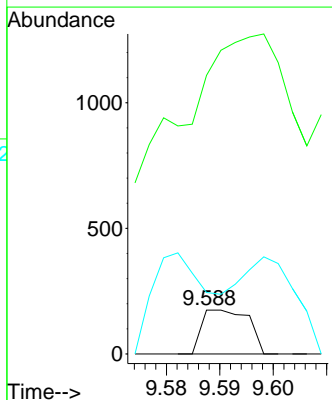
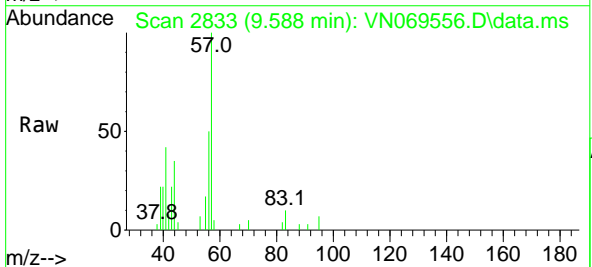


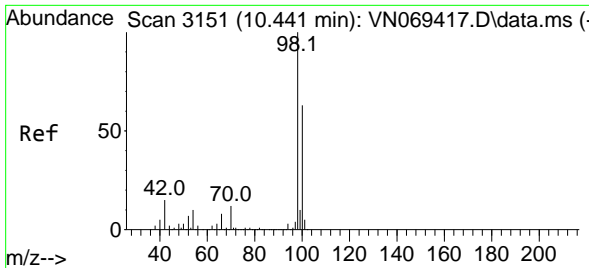
Tgt Ion	Resp	Lower	Upper
41	100		
69	0.0	72.4	108.6#
39	44.2	58.4	87.6#



#49
 1,4-Dioxane
 Concen: 39.311 ug/l
 RT: 9.588 min Scan# 2833
 Delta R.T. 0.016 min
 Lab File: VN069556.D
 Acq: 18 Nov 2021 16:34

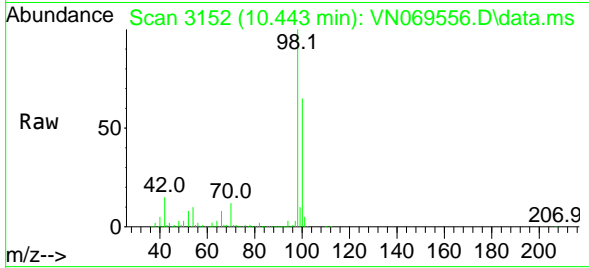
Tgt Ion	Resp	Lower	Upper
88	100		
43	0.0	23.4	35.2#
58	276.4	50.6	75.8#



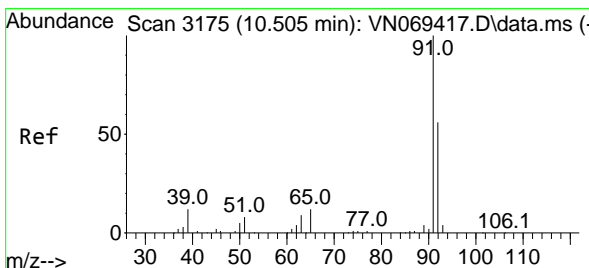
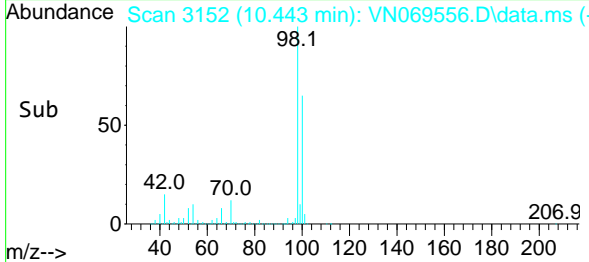
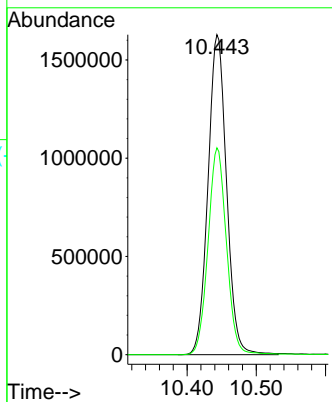


#50
 Toluene-d8
 Concen: 54.211 ug/l
 RT: 10.443 min Scan# 3151
 Delta R.T. 0.002 min
 Lab File: VN069556.D
 Acq: 18 Nov 2021 16:34

Instrument : MSVOA_N
 ClientSampleId :

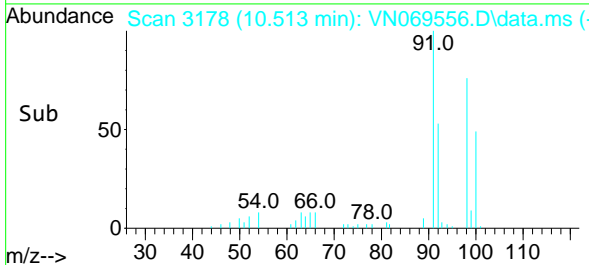
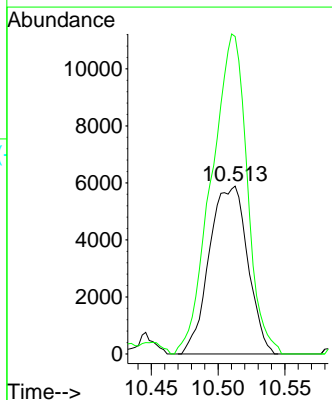
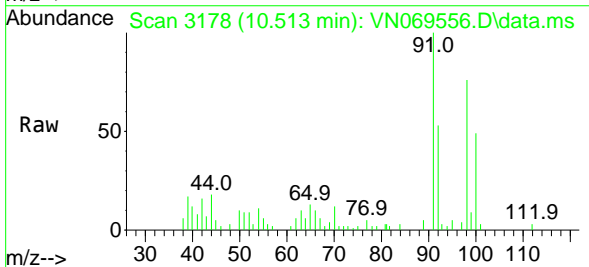


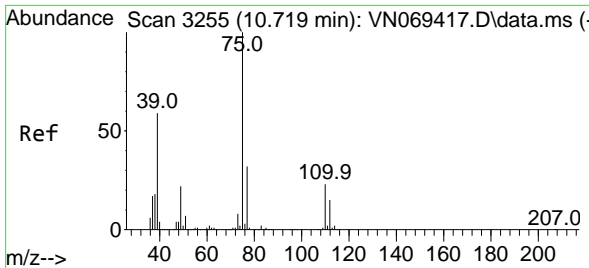
Tgt Ion: 98 Resp: 3029650
 Ion Ratio Lower Upper
 98 100
 100 64.3 50.4 75.6



#52
 Toluene
 Concen: 0.307 ug/l
 RT: 10.513 min Scan# 3178
 Delta R.T. 0.008 min
 Lab File: VN069556.D
 Acq: 18 Nov 2021 16:34

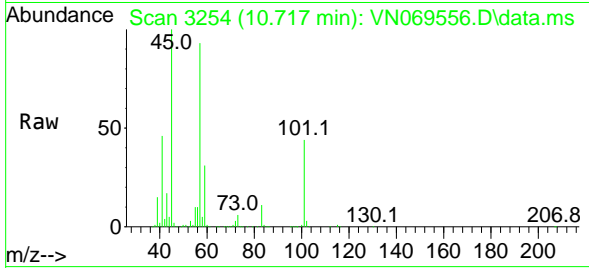
Tgt Ion: 92 Resp: 11773
 Ion Ratio Lower Upper
 92 100
 91 177.2 142.0 213.0



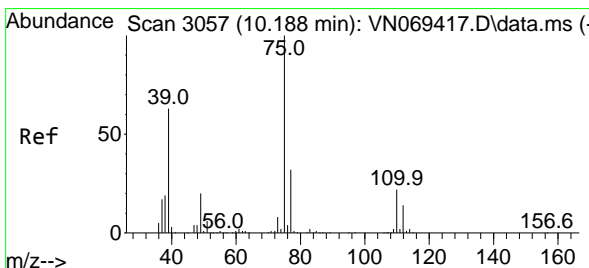
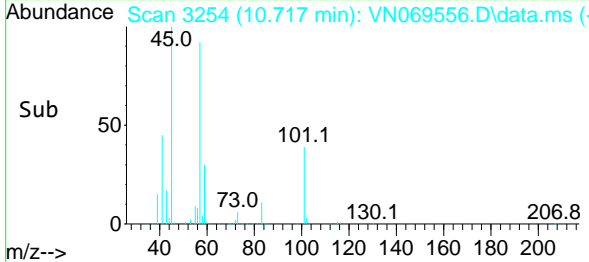
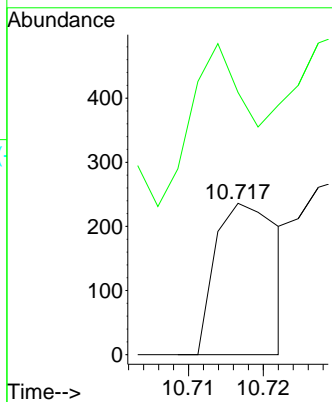


#53
 t-1,3-Dichloropropene
 Concen: 2.643 ug/l
 RT: 10.717 min Scan# 31
 Delta R.T. -0.002 min
 Lab File: VN069556.D
 Acq: 18 Nov 2021 16:34

Instrument : MSVOA_N
 ClientSampleId :

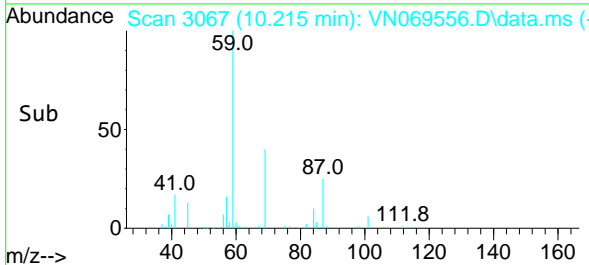
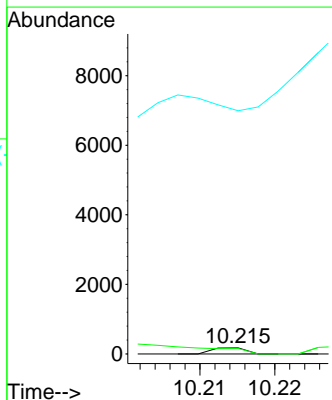
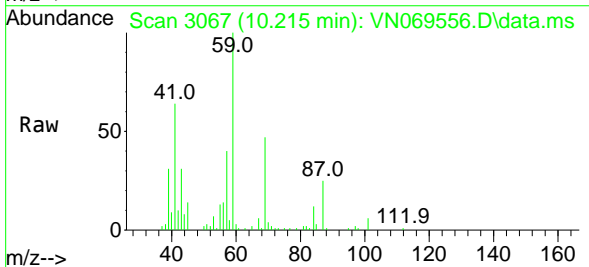


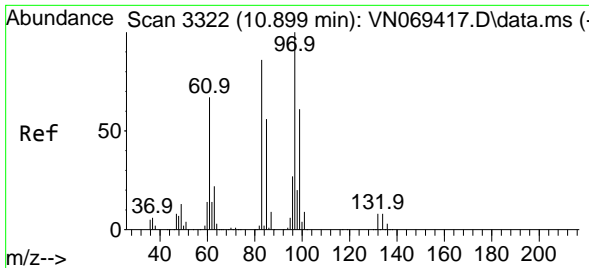
Tgt Ion: 75 Resp: 137
 Ion Ratio Lower Upper
 75 100
 77 50.4 25.6 38.4#



#54
 cis-1,3-Dichloropropene
 Concen: 1.735 ug/l
 RT: 10.215 min Scan# 3067
 Delta R.T. 0.027 min
 Lab File: VN069556.D
 Acq: 18 Nov 2021 16:34

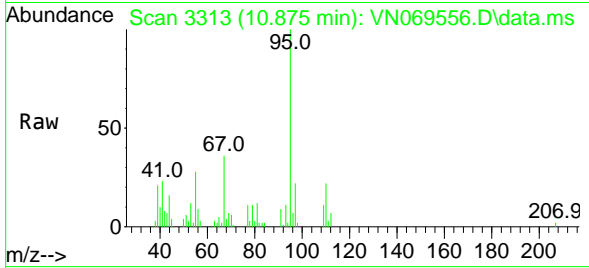
Tgt Ion: 75 Resp: 55
 Ion Ratio Lower Upper
 75 100
 77 89.1 26.4 39.6#
 39 0.0 42.5 63.7#





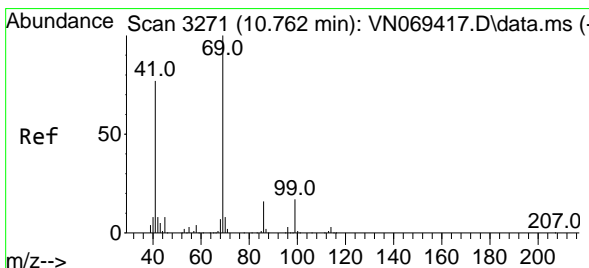
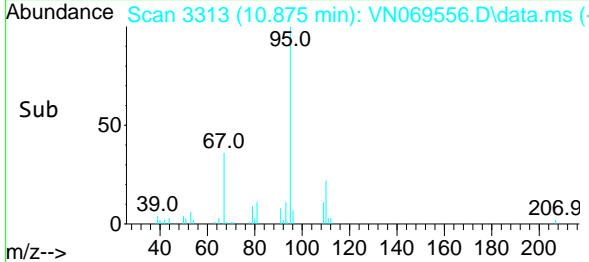
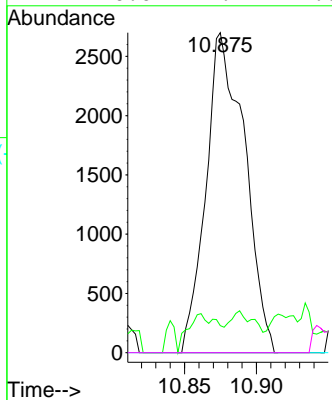
#55
 1,1,2-Trichloroethane
 Concen: 0.327 ug/l
 RT: 10.875 min Scan# 31
 Delta R.T. -0.024 min
 Lab File: VN069556.D
 Acq: 18 Nov 2021 16:34

Instrument :
 MSVOA_N
 ClientSampleId :



Tgt Ion: 97 Resp: 5047

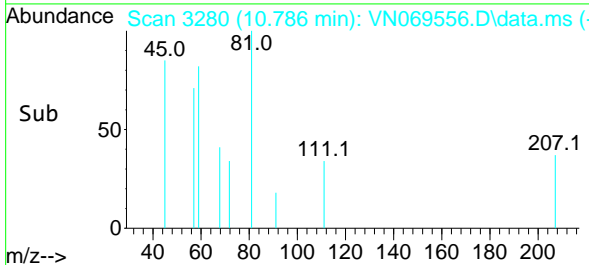
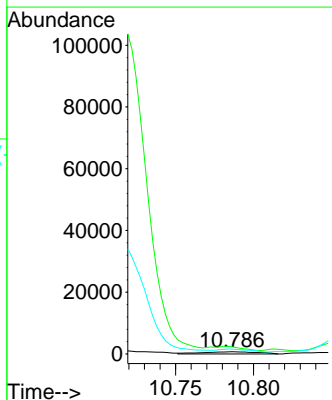
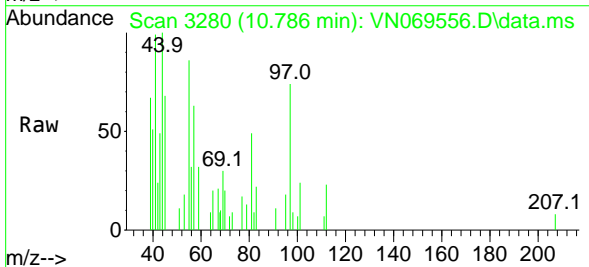
Ion	Ratio	Lower	Upper
97	100		
83	8.4	67.8	101.6#
85	0.0	45.4	68.2#
99	0.0	49.4	74.0#

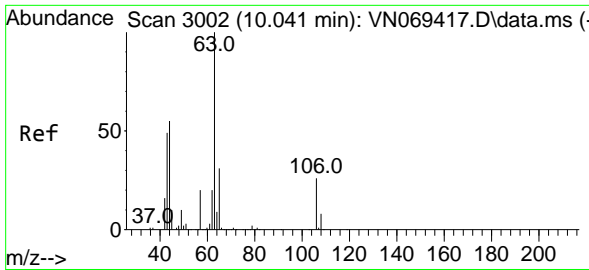


#56
 Ethyl methacrylate
 Concen: 2.112 ug/l
 RT: 10.786 min Scan# 3280
 Delta R.T. 0.024 min
 Lab File: VN069556.D
 Acq: 18 Nov 2021 16:34

Tgt Ion: 69 Resp: 1791

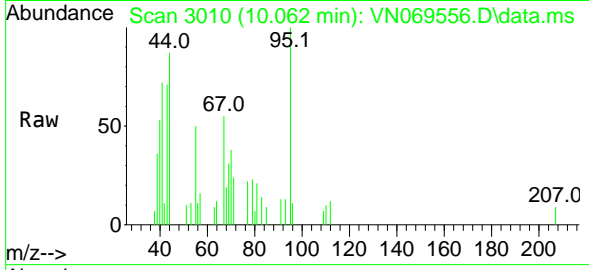
Ion	Ratio	Lower	Upper
69	100		
41	0.0	51.4	77.0#
39	0.0	34.6	52.0#



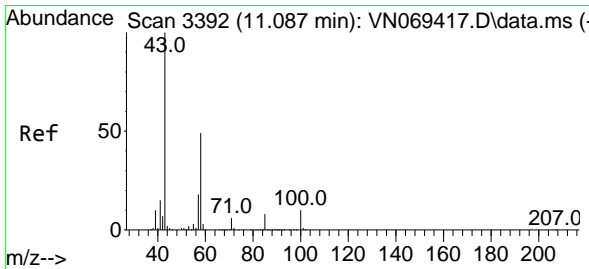
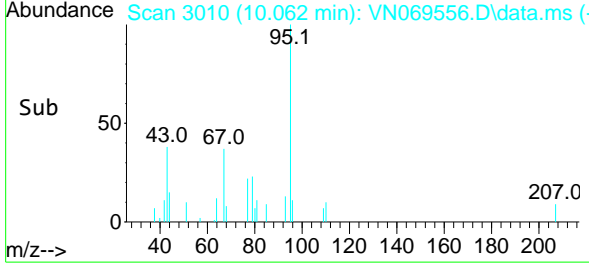
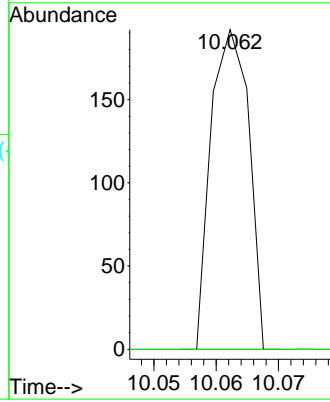


#58
 2-Chloroethyl Vinyl ether
 Concen: 22.780 ug/l
 RT: 10.062 min Scan# 3002
 Delta R.T. 0.021 min
 Lab File: VN069556.D
 Acq: 18 Nov 2021 16:34

Instrument :
 MSVOA_N
 ClientSampleId :

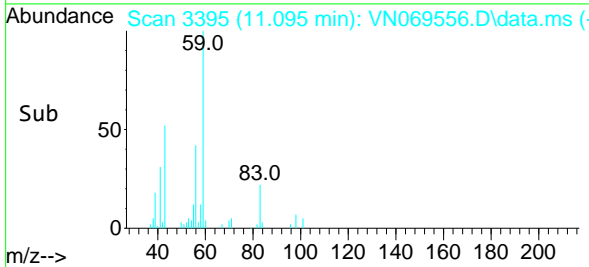
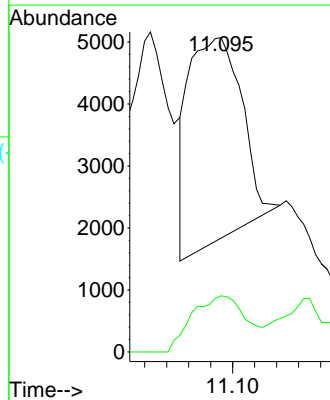
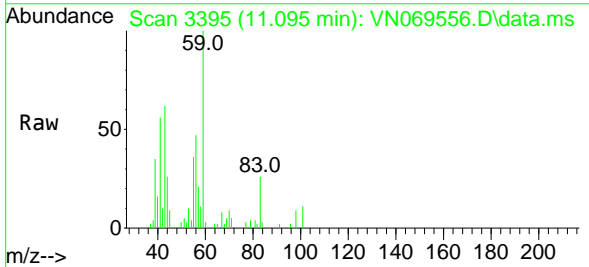


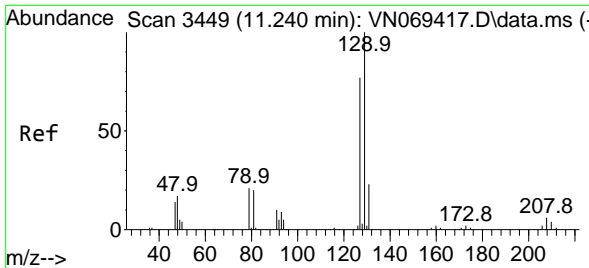
Tgt Ion: 63 Resp: 81
 Ion Ratio Lower Upper
 63 100
 106 0.0 23.9 35.9#



#59
 2-Hexanone
 Concen: 8.168 ug/l
 RT: 11.095 min Scan# 3395
 Delta R.T. 0.008 min
 Lab File: VN069556.D
 Acq: 18 Nov 2021 16:34

Tgt Ion: 43 Resp: 5516
 Ion Ratio Lower Upper
 43 100
 58 28.5 26.9 80.7

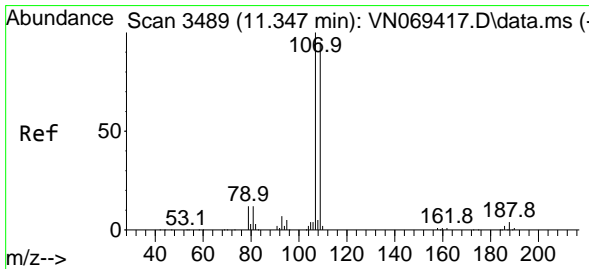
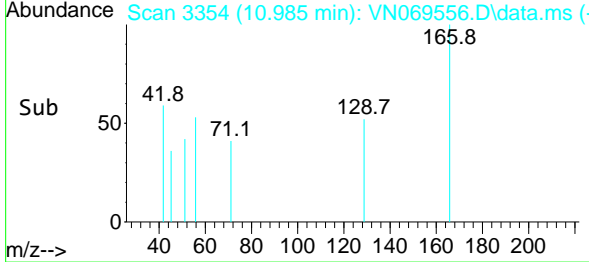
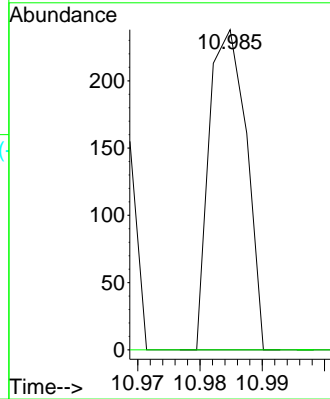
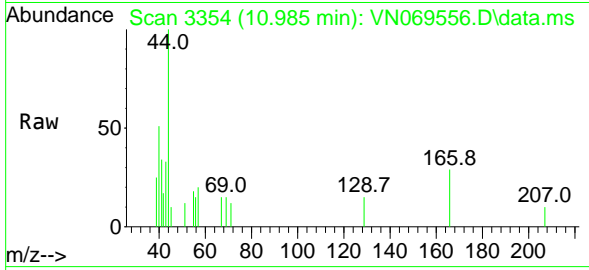




#60
 Dibromochloromethane
 Concen: 2.423 ug/l
 RT: 10.985 min Scan# 31
 Delta R.T. -0.255 min
 Lab File: VN069556.D
 Acq: 18 Nov 2021 16:34

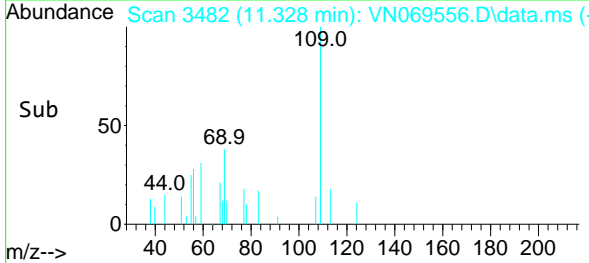
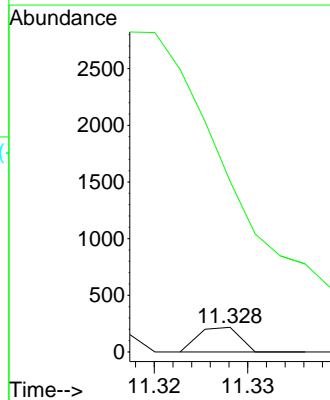
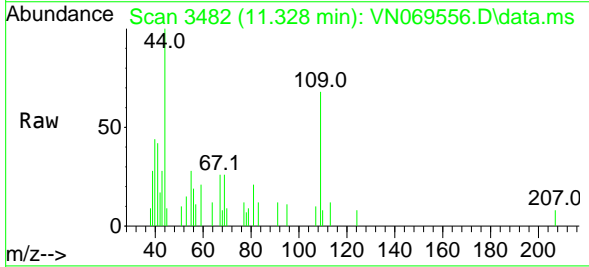
Instrument :
 MSVOA_N
 ClientSampleId :

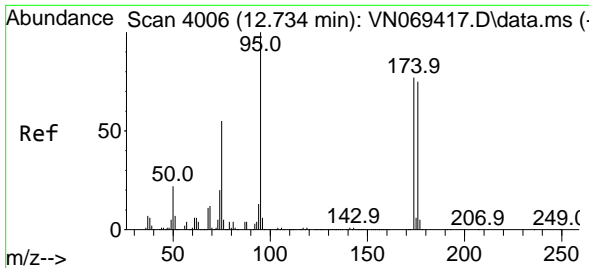
Tgt Ion:129 Resp: 99
 Ion Ratio Lower Upper
 129 100
 127 0.0 38.6 116.0#



#61
 1,2-Dibromoethane
 Concen: 1.075 ug/l
 RT: 11.328 min Scan# 3482
 Delta R.T. -0.019 min
 Lab File: VN069556.D
 Acq: 18 Nov 2021 16:34

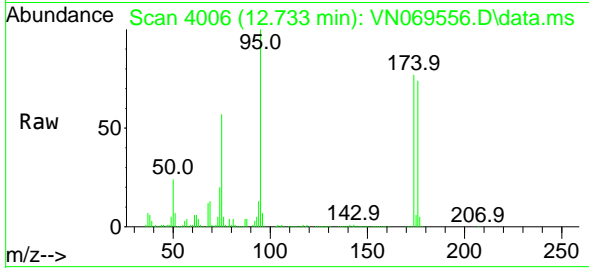
Tgt Ion:107 Resp: 67
 Ion Ratio Lower Upper
 107 100
 109 0.0 75.7 113.5#



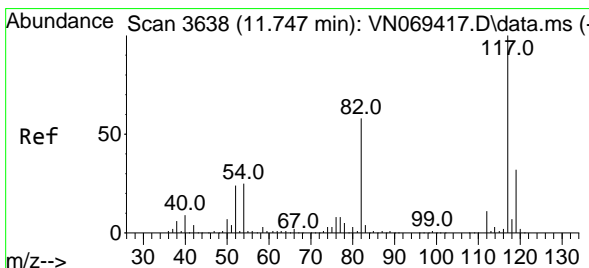
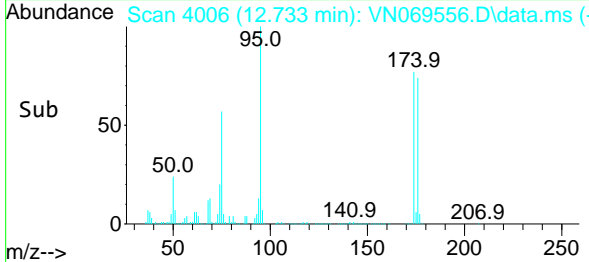
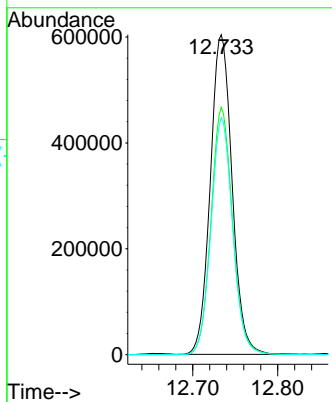


#62
 4-Bromofluorobenzene
 Concen: 52.418 ug/l
 RT: 12.733 min Scan# 4006
 Delta R.T. -0.001 min
 Lab File: VN069556.D
 Acq: 18 Nov 2021 16:34

Instrument :
 MSVOA_N
 ClientSampleId :

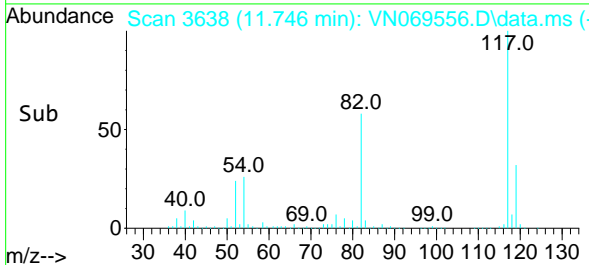
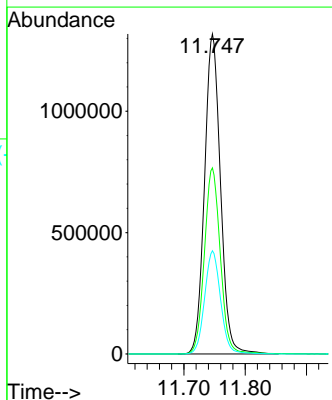
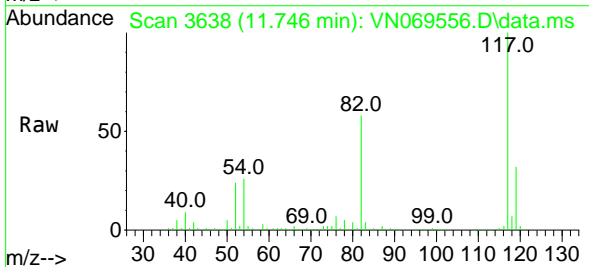


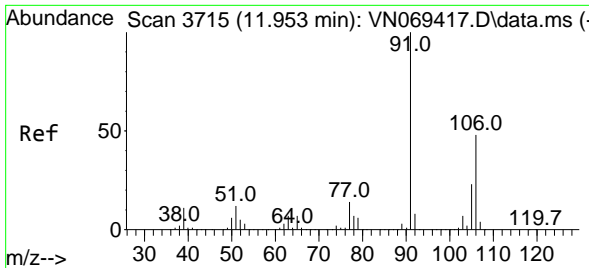
Tgt Ion: 95 Resp: 1076177
 Ion Ratio Lower Upper
 95 100
 174 76.7 0.0 187.2
 176 73.7 0.0 181.4



#63
 Chlorobenzene-d5
 Concen: 50.000 ug/l
 RT: 11.746 min Scan# 3638
 Delta R.T. -0.001 min
 Lab File: VN069556.D
 Acq: 18 Nov 2021 16:34

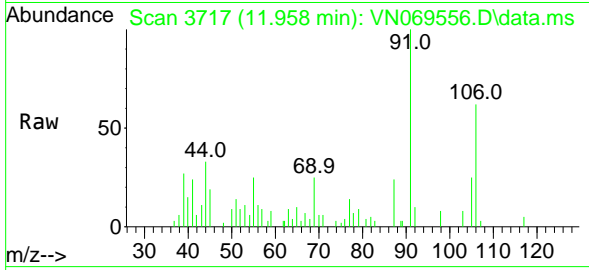
Tgt Ion: 117 Resp: 2383764
 Ion Ratio Lower Upper
 117 100
 82 58.1 42.4 63.6
 119 32.2 25.4 38.2



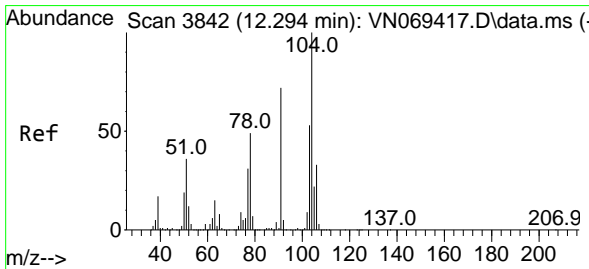
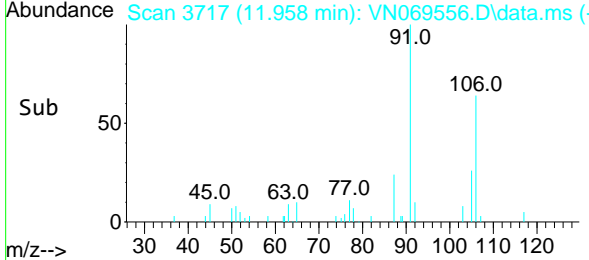
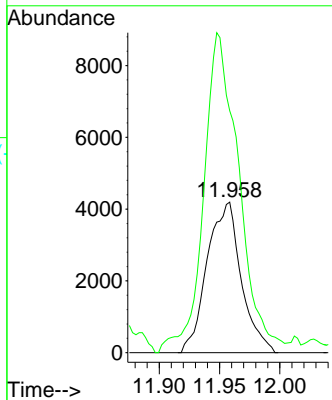


#68
 m/p-Xylenes
 Concen: 0.274 ug/l
 RT: 11.958 min Scan# 31
 Delta R.T. 0.005 min
 Lab File: VN069556.D
 Acq: 18 Nov 2021 16:34

Instrument :
 MSVOA_N
 ClientSampleId :

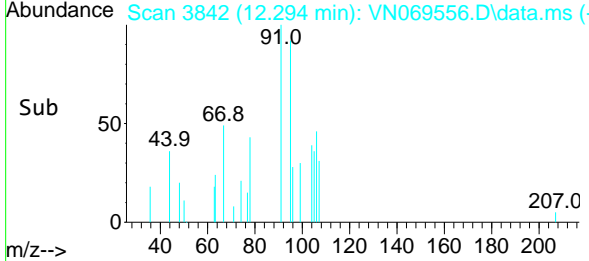
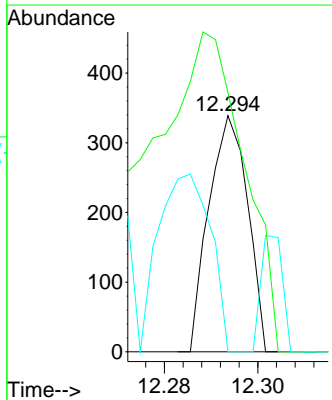
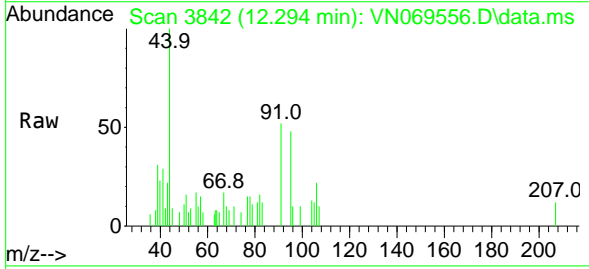


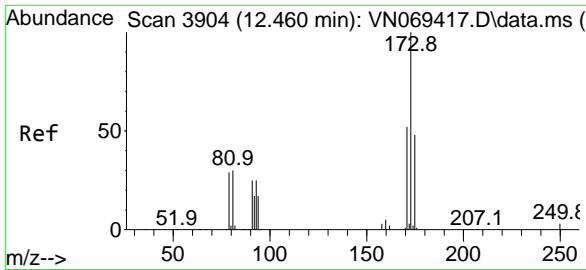
Tgt Ion:106 Resp: 8238
 Ion Ratio Lower Upper
 106 100
 91 219.5 160.6 240.8



#70
 Styrene
 Concen: 1.524 ug/l
 RT: 12.294 min Scan# 3842
 Delta R.T. -0.000 min
 Lab File: VN069556.D
 Acq: 18 Nov 2021 16:34

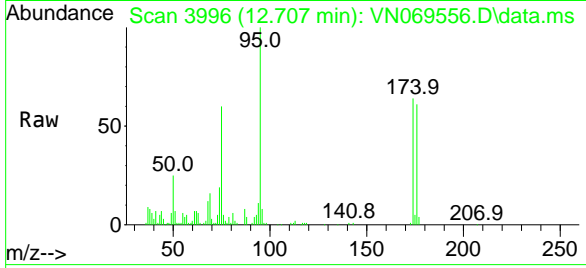
Tgt Ion:104 Resp: 195
 Ion Ratio Lower Upper
 104 100
 78 350.8 38.7 58.1#
 103 101.5 45.0 67.6#



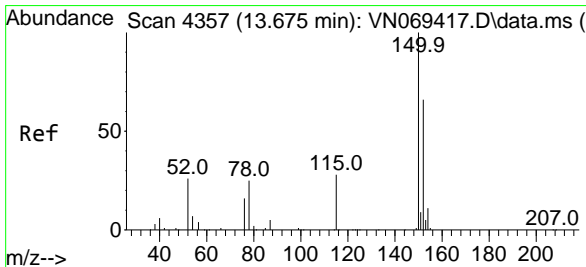
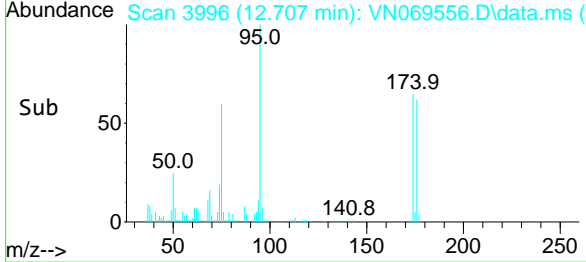
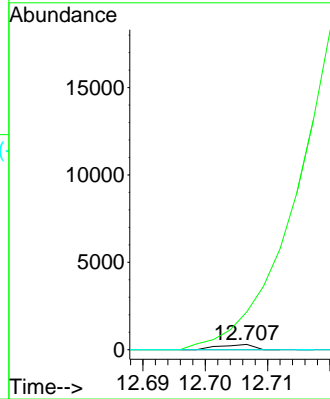


#71
 Bromoform
 Concen: 3.436 ug/l
 RT: 12.707 min Scan# 3904
 Delta R.T. 0.247 min
 Lab File: VN069556.D
 Acq: 18 Nov 2021 16:34

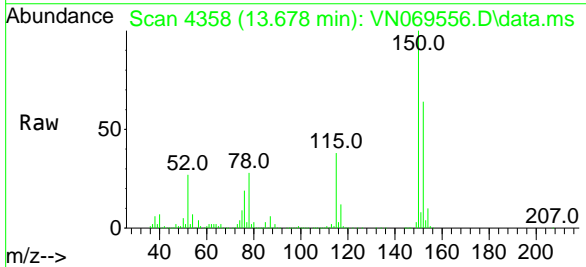
Instrument :
 MSVOA_N
 ClientSampleId :



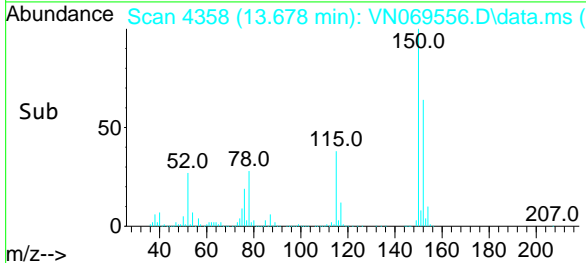
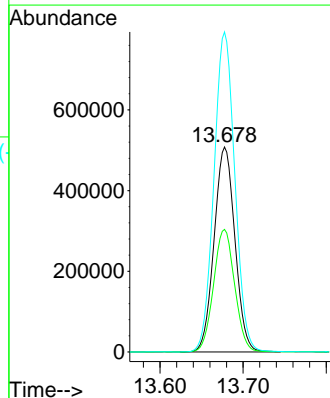
Tgt Ion:173 Resp: 113
 Ion Ratio Lower Upper
 173 100
 175 0.0 24.2 72.6#
 254 0.0 0.0 0.0

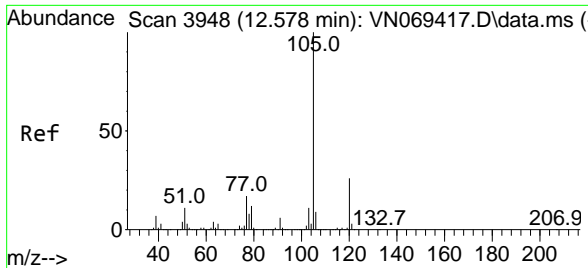


#72
 1,4-Dichlorobenzene-d4
 Concen: 50.000 ug/l
 RT: 13.678 min Scan# 4358
 Delta R.T. 0.003 min
 Lab File: VN069556.D
 Acq: 18 Nov 2021 16:34



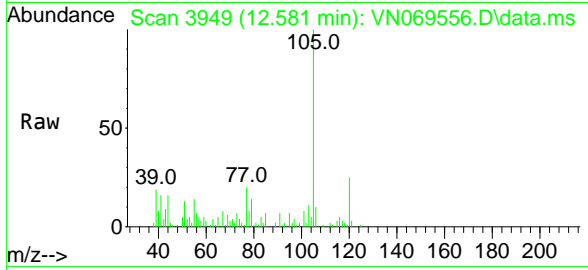
Tgt Ion:152 Resp: 886144
 Ion Ratio Lower Upper
 152 100
 115 60.6 27.5 82.5
 150 156.5 0.0 344.4



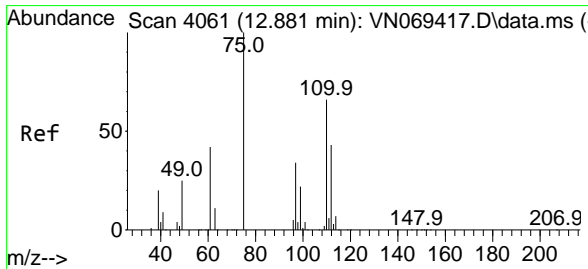
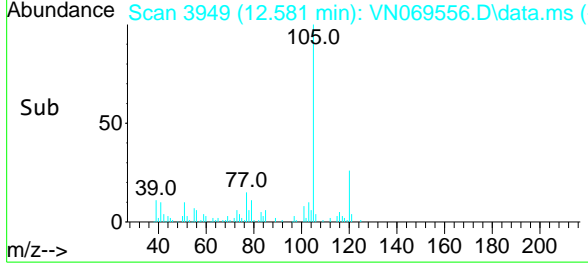
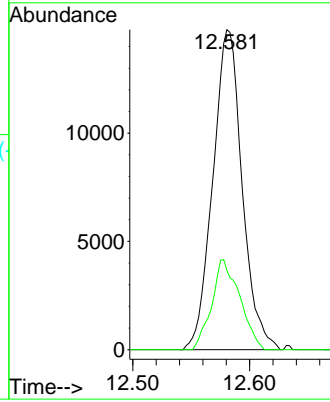


#73
 Isopropylbenzene
 Concen: 0.364 ug/l
 RT: 12.581 min Scan# 3948
 Delta R.T. 0.003 min
 Lab File: VN069556.D
 Acq: 18 Nov 2021 16:34

Instrument : MSVOA_N
 ClientSampleId :

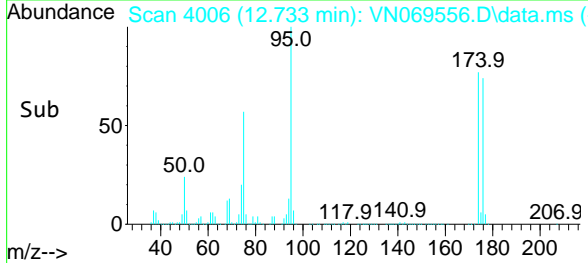
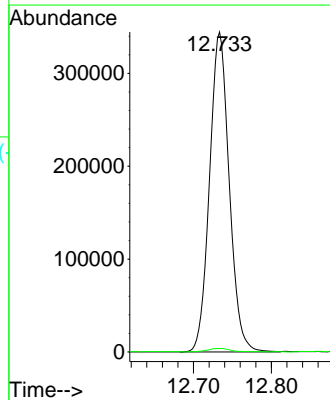
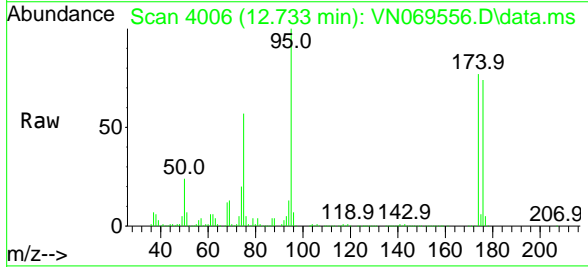


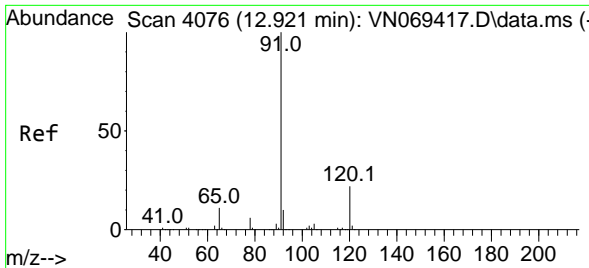
Tgt Ion:105 Resp: 25715
 Ion Ratio Lower Upper
 105 100
 120 26.9 13.4 40.1



#76
 1,2,3-Trichloropropane
 Concen: 29.563 ug/l
 RT: 12.733 min Scan# 4006
 Delta R.T. -0.148 min
 Lab File: VN069556.D
 Acq: 18 Nov 2021 16:34

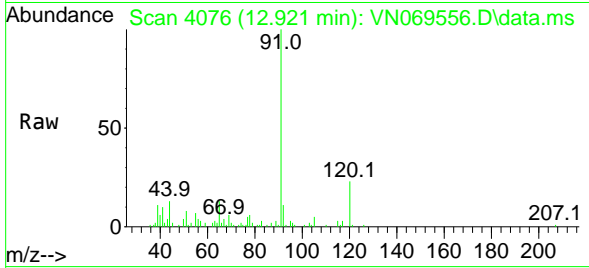
Tgt Ion: 75 Resp: 604571
 Ion Ratio Lower Upper
 75 100
 77 1.3 82.6 247.8#



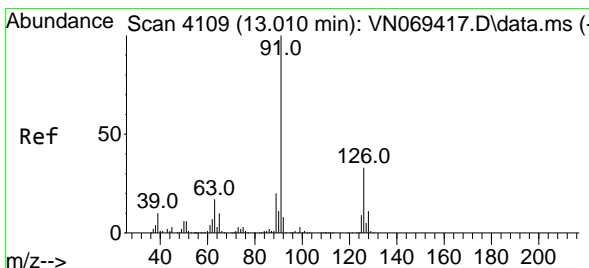
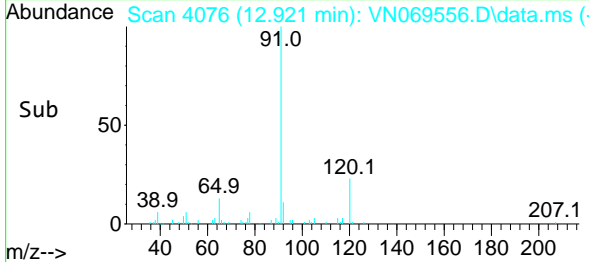
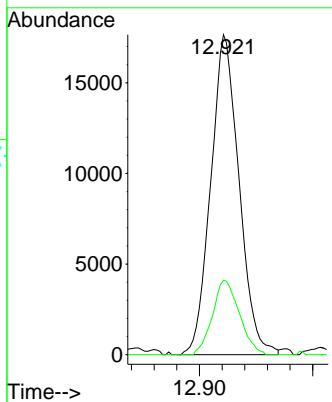


#78
 n-propylbenzene
 Concen: 0.386 ug/l
 RT: 12.921 min Scan# 4076
 Delta R.T. 0.000 min
 Lab File: VN069556.D
 Acq: 18 Nov 2021 16:34

Instrument : MSVOA_N
 ClientSampleId :

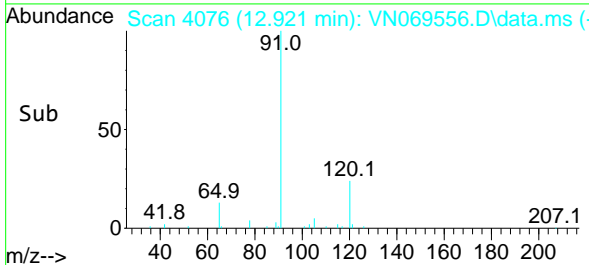
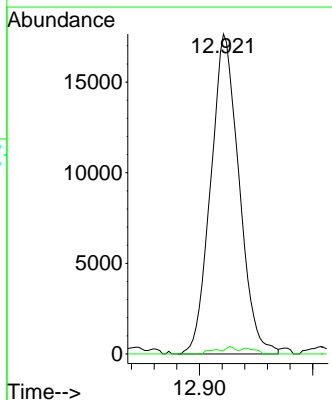
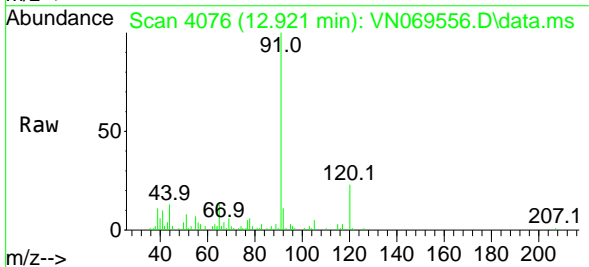


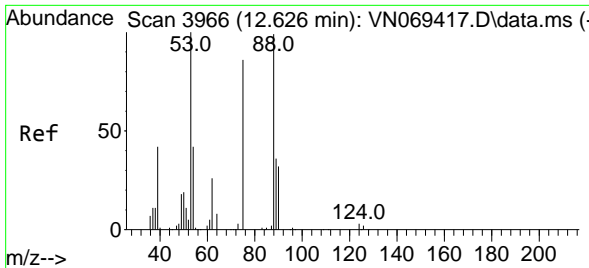
Tgt Ion: 91 Resp: 30631
 Ion Ratio Lower Upper
 91 100
 120 22.1 11.9 35.9



#79
 2-Chlorotoluene
 Concen: 0.623 ug/l
 RT: 12.921 min Scan# 4076
 Delta R.T. -0.089 min
 Lab File: VN069556.D
 Acq: 18 Nov 2021 16:34

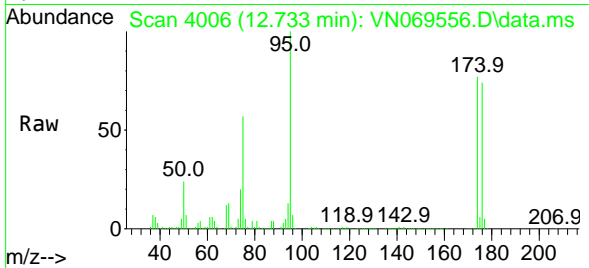
Tgt Ion: 91 Resp: 30631
 Ion Ratio Lower Upper
 91 100
 126 0.8 18.3 54.8#



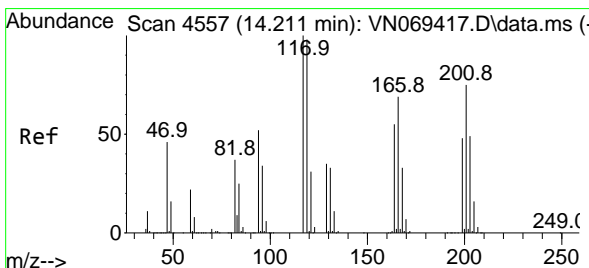
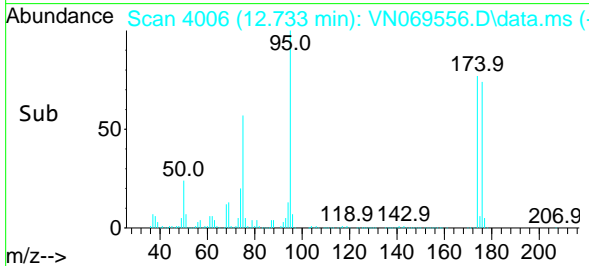
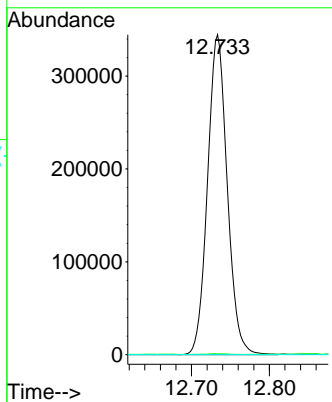


#81
 trans-1,4-Dichloro-2-butene
 Concen: 83.601 ug/l
 RT: 12.733 min Scan# 4006
 Delta R.T. 0.107 min
 Lab File: VN069556.D
 Acq: 18 Nov 2021 16:34

Instrument : MSVOA_N
 ClientSampleId :

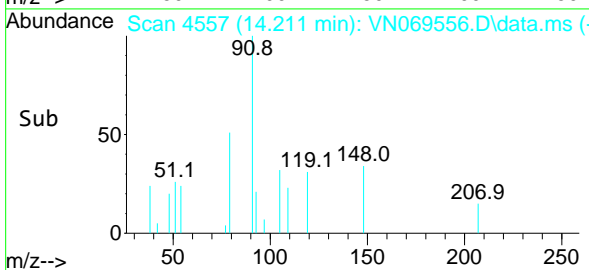
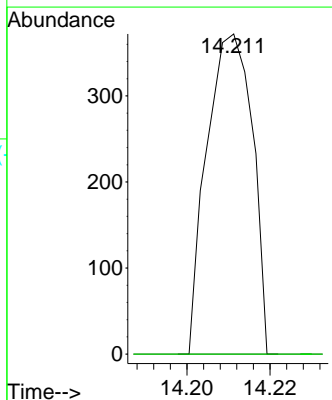
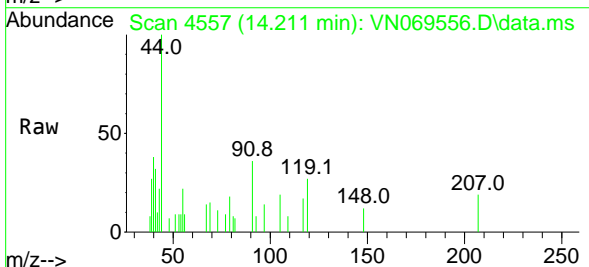


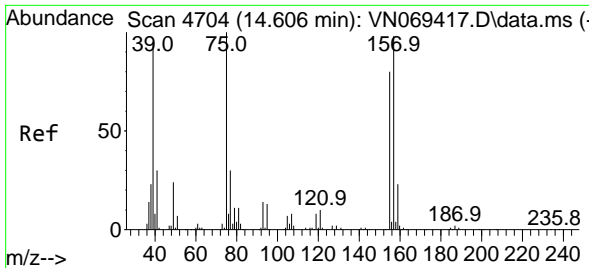
Tgt Ion: 75 Resp: 604571
 Ion Ratio Lower Upper
 75 100
 53 0.2 90.5 135.7#
 89 0.0 38.2 57.4#



#90
 Hexachloroethane
 Concen: 2.189 ug/l
 RT: 14.211 min Scan# 4557
 Delta R.T. 0.000 min
 Lab File: VN069556.D
 Acq: 18 Nov 2021 16:34

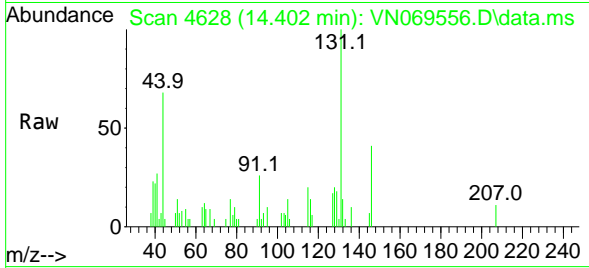
Tgt Ion: 117 Resp: 283
 Ion Ratio Lower Upper
 117 100
 201 0.0 43.9 131.6#



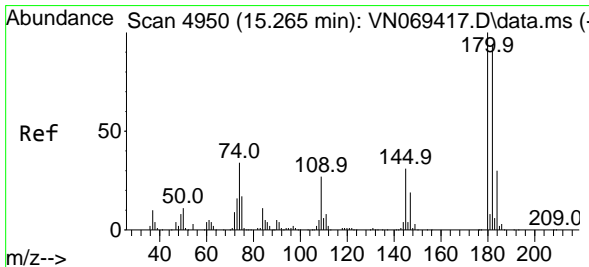
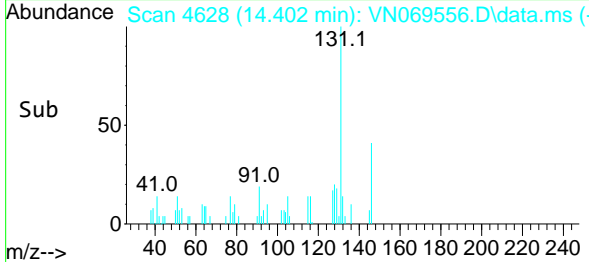
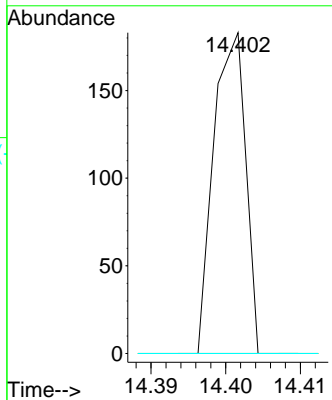


#92
 1,2-Dibromo-3-Chloropropane
 Concen: 1.809 ug/l
 RT: 14.402 min Scan# 40
 Delta R.T. -0.204 min
 Lab File: VN069556.D
 Acq: 18 Nov 2021 16:34

Instrument :
 MSVOA_N
 ClientSampleId :

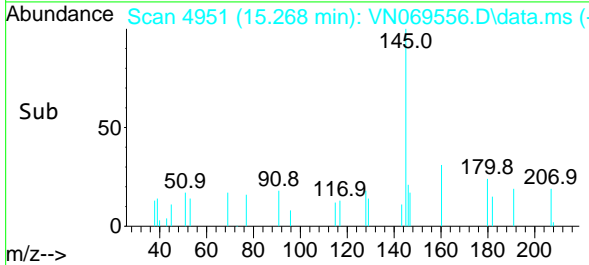
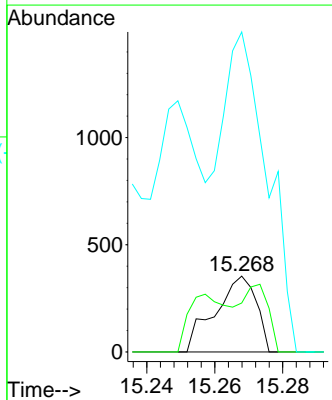
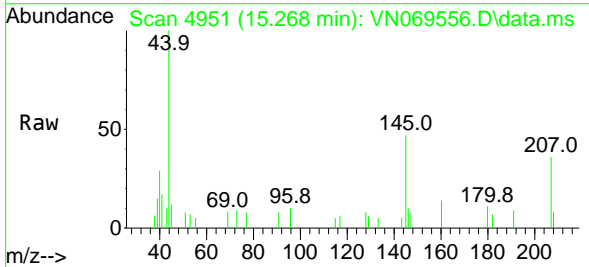


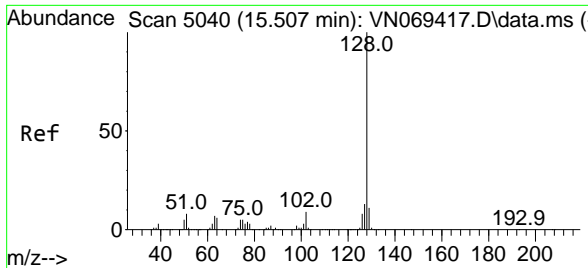
Tgt Ion: 75 Resp: 54
 Ion Ratio Lower Upper
 75 100
 155 0.0 46.9 140.7#
 157 0.0 60.6 181.7#



#93
 1,2,4-Trichlorobenzene
 Concen: 3.133 ug/l
 RT: 15.268 min Scan# 4951
 Delta R.T. 0.003 min
 Lab File: VN069556.D
 Acq: 18 Nov 2021 16:34

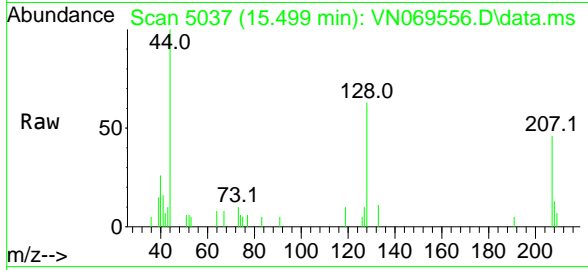
Tgt Ion:180 Resp: 298
 Ion Ratio Lower Upper
 180 100
 182 56.7 48.3 144.9
 145 484.9 14.5 43.5#



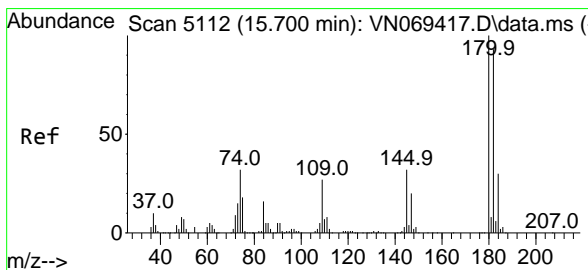
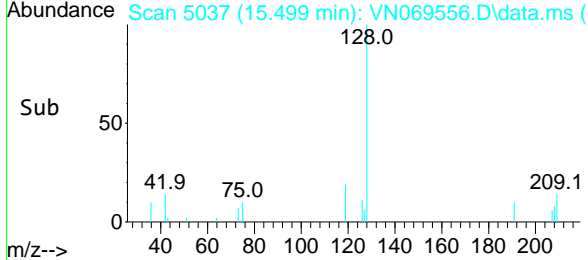
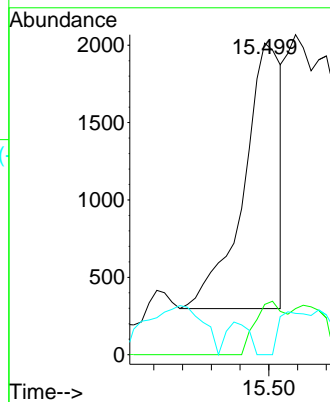


#95
 Naphthalene
 Concen: 4.487 ug/l
 RT: 15.499 min Scan# 5037
 Delta R.T. -0.008 min
 Lab File: VN069556.D
 Acq: 18 Nov 2021 16:34

Instrument : MSVOA_N
 ClientSampleId :



Tgt Ion:128 Resp: 1556
 Ion Ratio Lower Upper
 128 100
 127 16.5 10.5 15.7#
 129 13.5 8.7 13.1#



#96
 1,2,3-Trichlorobenzene
 Concen: 3.182 ug/l
 RT: 15.700 min Scan# 5112
 Delta R.T. -0.000 min
 Lab File: VN069556.D
 Acq: 18 Nov 2021 16:34

Tgt Ion:180 Resp: 184
 Ion Ratio Lower Upper
 180 100
 182 243.5 47.4 142.2#
 145 627.2 15.0 45.1#

