

Data Path : Z:\voasrv\HPCHEM1\MSVOA\_N\Data\VN111924\  
 Data File : VN084952.D  
 Acq On : 19 Nov 2024 17:16  
 Operator : JC\MD  
 Sample : P4843-01RE  
 Misc : 5.0mL/MSVOA\_N/WATER  
 ALS Vial : 19 Sample Multiplier: 1

Instrument :  
 MSVOA\_N  
 ClientSampleId :

Quant Time: Nov 20 00:32:11 2024  
 Quant Method : Z:\voasrv\HPCHEM1\MSVOA\_N\methods\82N103024W.M  
 Quant Title : SW846 8260  
 QLast Update : Thu Oct 31 18:45:38 2024  
 Response via : Initial Calibration

Compound	R.T.	QIon	Response	Conc	Units	Dev(Min)
Internal Standards						
1) Pentafluorobenzene	8.224	168	186637	50.000	ug/l	0.00
34) 1,4-Difluorobenzene	9.100	114	348139	50.000	ug/l	0.00
63) Chlorobenzene-d5	11.865	117	291141	50.000	ug/l	0.00
72) 1,4-Dichlorobenzene-d4	13.794	152	135919	50.000	ug/l	0.00
System Monitoring Compounds						
33) 1,2-Dichloroethane-d4	8.577	65	137860	51.141	ug/l	0.00
Spiked Amount	50.000	Range 74 - 125	Recovery	=	102.280%	
35) Dibromofluoromethane	8.165	113	111647	47.379	ug/l	0.00
Spiked Amount	50.000	Range 75 - 124	Recovery	=	94.760%	
50) Toluene-d8	10.565	98	396481	45.675	ug/l	0.00
Spiked Amount	50.000	Range 86 - 113	Recovery	=	91.340%	
62) 4-Bromofluorobenzene	12.847	95	155133	47.819	ug/l	0.00
Spiked Amount	50.000	Range 77 - 121	Recovery	=	95.640%	
Target Compounds						
						Qvalue
3) Chloromethane	2.348	50	1224	Below Cal		97
6) Chloroethane	3.100	64	283	Below Cal	#	45
11) Tert butyl alcohol	5.494	59	2075	5.832	ug/l #	73
16) Acetone	4.465	43	40801	50.117	ug/l	97
17) Carbon Disulfide	4.700	76	1682	0.257	ug/l #	75
18) Methyl Acetate	5.036	43	7978	Below Cal	#	73
20) Methylene Chloride	5.277	84	1913	0.807	ug/l #	84
25) 2-Butanone	7.500	43	5578	4.435	ug/l	95
28) Bromochloromethane	7.965	49	2133	1.302	ug/l #	15
30) Chloroform	7.965	83	28093	6.712	ug/l	99
31) Cyclohexane	8.218	56	5978	1.606	ug/l #	46
36) 1,1-Dichloropropene	8.218	75	16317	4.993	ug/l #	49
37) Ethyl Acetate	7.500	43	5578	1.881	ug/l #	73
38) Carbon Tetrachloride	8.224	117	20060	5.491	ug/l #	17
39) Methylcyclohexane	9.600	83	1282	0.386	ug/l	93
40) Benzene	8.600	78	239883	22.856	ug/l	97
42) 1,2-Dichloroethane	8.600	62	2175	0.640	ug/l	82
43) Isopropyl Acetate	8.677	43	229468	41.730	ug/l #	56
44) Trichloroethene	9.353	130	568	0.235	ug/l	51
47) Bromodichloromethane	9.894	83	1429	0.390	ug/l #	86
48) Methyl methacrylate	9.665	41	997	0.432	ug/l #	34
51) 4-Methyl-2-Pentanone	10.441	43	1488	0.526	ug/l #	36
52) Toluene	10.629	92	8992	1.465	ug/l	98
59) 2-Hexanone	11.218	43	552	0.268	ug/l	77
60) Dibromochloromethane	11.088	129	579	0.220	ug/l #	11
64) Tetrachloroethene	11.106	164	728	0.376	ug/l #	77
67) Ethyl Benzene	11.965	91	312990	28.788	ug/l	99
68) m/p-Xylenes	12.070	106	21970	5.338	ug/l	99
69) o-Xylene	12.400	106	21290	5.529	ug/l	96
70) Styrene	12.406	104	2732	0.407	ug/l #	1
73) Isopropylbenzene	12.694	105	49842	5.233	ug/l	96
74) N-amyl acetate	12.459	43	1856	0.458	ug/l #	42
76) 1,2,3-Trichloropropane	12.847	75	81052	29.832	ug/l #	1
78) n-propylbenzene	13.035	91	28430	2.547	ug/l	99
79) 2-Chlorotoluene	13.129	91	4065	0.557	ug/l #	43
80) 1,3,5-Trimethylbenzene	13.170	105	16882	2.138	ug/l	96

Data Path : Z:\voasrv\HPCHEM1\MSVOA\_N\Data\VN111924\  
 Data File : VN084952.D  
 Acq On : 19 Nov 2024 17:16  
 Operator : JC\MD  
 Sample : P4843-01RE  
 Misc : 5.0mL/MSVOA\_N/WATER  
 ALS Vial : 19 Sample Multiplier: 1

Instrument :  
 MSVOA\_N  
 ClientSampleId :

Quant Time: Nov 20 00:32:11 2024  
 Quant Method : Z:\voasrv\HPCHEM1\MSVOA\_N\methods\82N103024W.M  
 Quant Title : SW846 8260  
 QLast Update : Thu Oct 31 18:45:38 2024  
 Response via : Initial Calibration

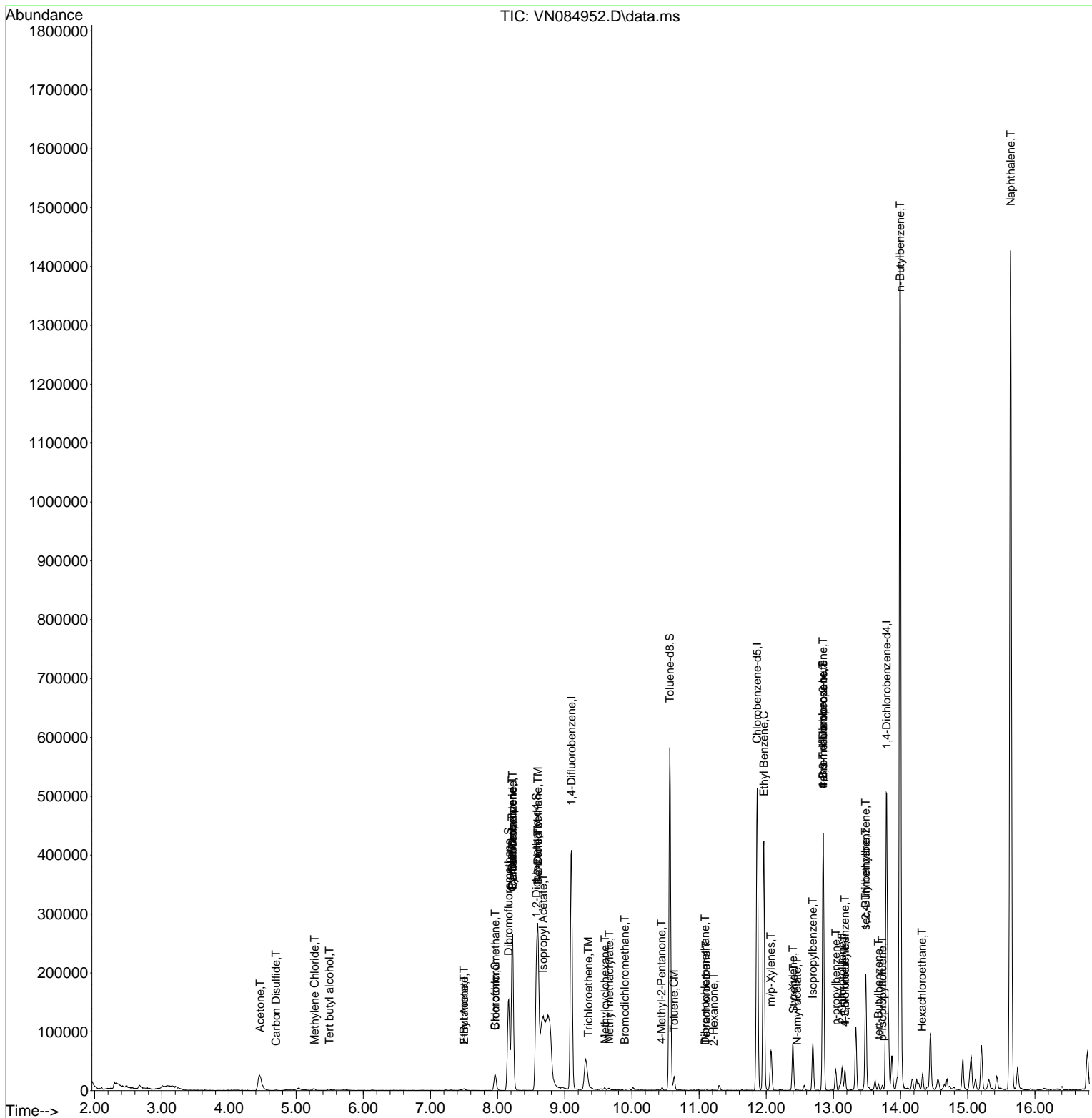
Compound	R.T.	QIon	Response	Conc	Units	Dev(Min)
81) trans-1,4-Dichloro-2-b...	12.847	75	81052	70.773	ug/l #	11
82) 4-Chlorotoluene	13.170	91	2047	0.267	ug/l #	43
83) tert-Butylbenzene	13.670	119	5629	0.862	ug/l	69
84) 1,2,4-Trimethylbenzene	13.482	105	110924	13.614	ug/l	99
85) sec-Butylbenzene	13.482	105	110924	12.019	ug/l #	57
86) p-Isopropyltoluene	13.729	119	3428	0.453	ug/l #	75
88) 1,4-Dichlorobenzene	13.812	146	148	Below Cal	#	24
89) n-Butylbenzene	13.994	91	140863	19.895	ug/l #	42
90) Hexachloroethane	14.323	117	2222	1.316	ug/l #	15
95) Naphthalene	15.641	128	1321146	167.933	ug/l	99

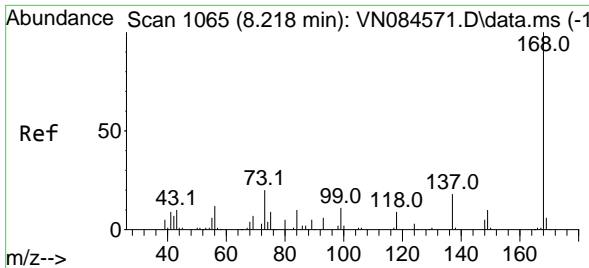
(#) = qualifier out of range (m) = manual integration (+) = signals summed

Data Path : Z:\voasrv\HPCHEM1\MSVOA\_N\Data\VN111924\  
 Data File : VN084952.D  
 Acq On : 19 Nov 2024 17:16  
 Operator : JC\MD  
 Sample : P4843-01RE  
 Misc : 5.0mL/MSVOA\_N/WATER  
 ALS Vial : 19 Sample Multiplier: 1

Instrument :  
 MSVOA\_N  
 ClientSampleId :

Quant Time: Nov 20 00:32:11 2024  
 Quant Method : Z:\voasrv\HPCHEM1\MSVOA\_N\methods\82N103024W.M  
 Quant Title : SW846 8260  
 QLast Update : Thu Oct 31 18:45:38 2024  
 Response via : Initial Calibration

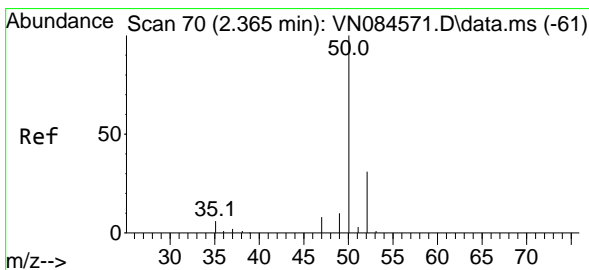
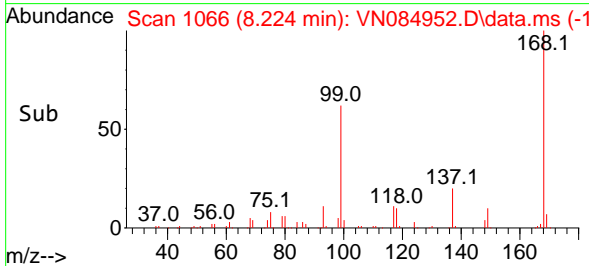
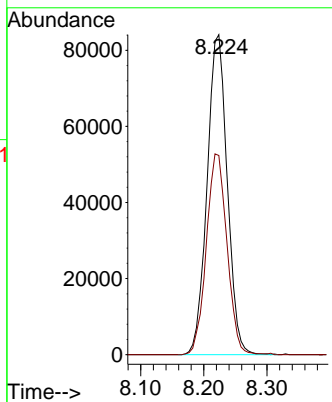
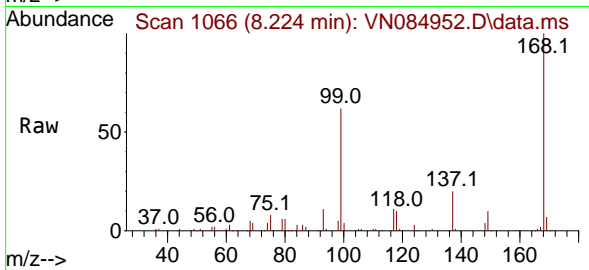




#1  
 Pentafluorobenzene  
 Concen: 50.000 ug/l  
 RT: 8.224 min Scan# 10  
 Delta R.T. -0.000 min  
 Lab File: VN084952.D  
 Acq: 19 Nov 2024 17:16

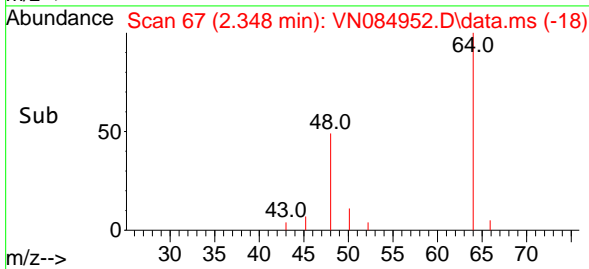
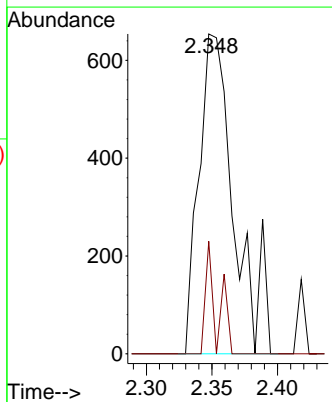
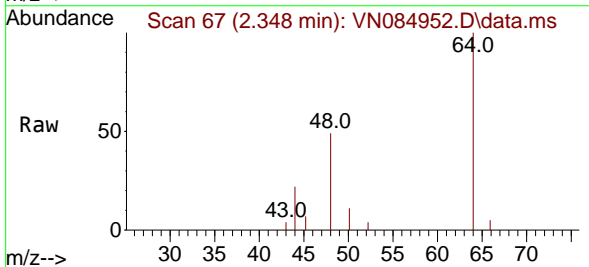
Instrument :  
 MSVOA\_N  
 ClientSampleId :

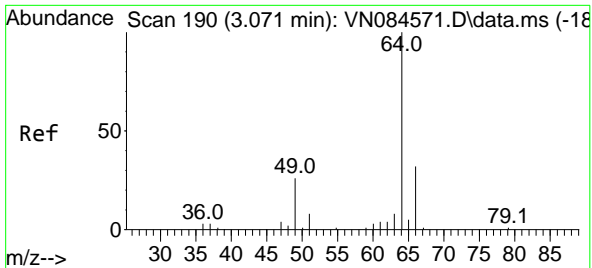
Tgt Ion:168 Resp: 186637  
 Ion Ratio Lower Upper  
 168 100  
 99 62.3 54.2 81.2



#3  
 Chloromethane  
 Concen: Below Cal  
 RT: 2.348 min Scan# 67  
 Delta R.T. -0.011 min  
 Lab File: VN084952.D  
 Acq: 19 Nov 2024 17:16

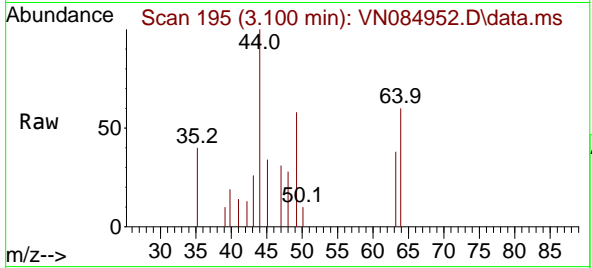
Tgt Ion: 50 Resp: 1224  
 Ion Ratio Lower Upper  
 50 100  
 52 35.2 26.8 40.2



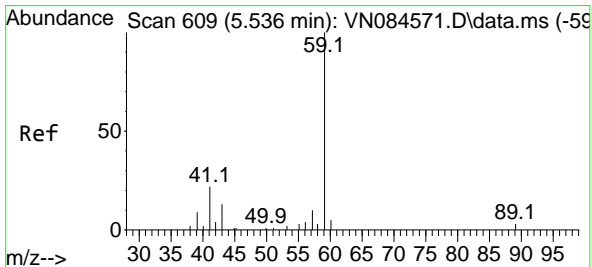
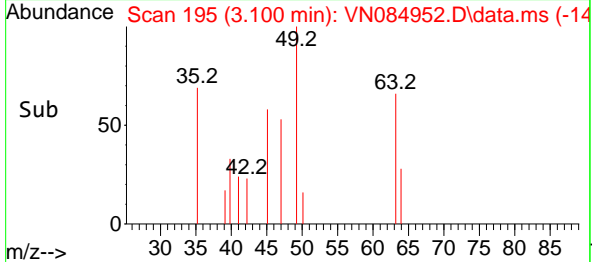
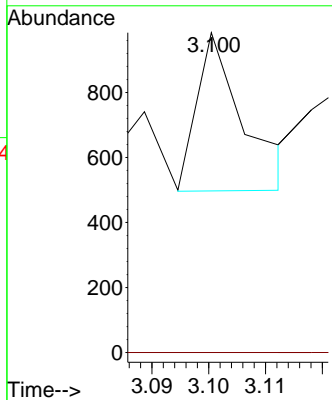


#6  
 Chloroethane  
 Concen: Below Cal  
 RT: 3.100 min Scan# 190  
 Delta R.T. -0.018 min  
 Lab File: VN084952.D  
 Acq: 19 Nov 2024 17:16

Instrument :  
 MSVOA\_N  
 ClientSampleId :

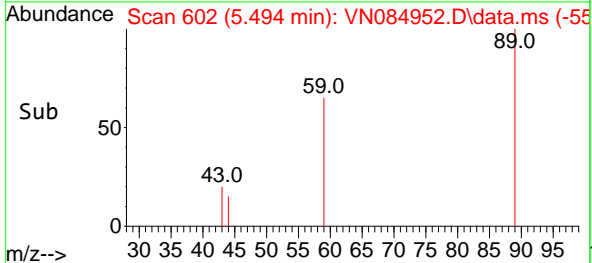
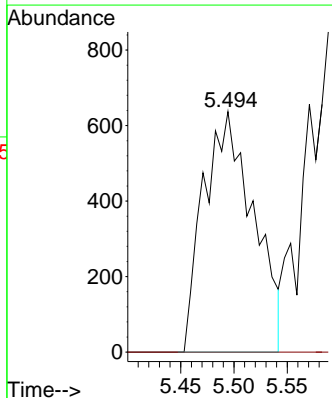
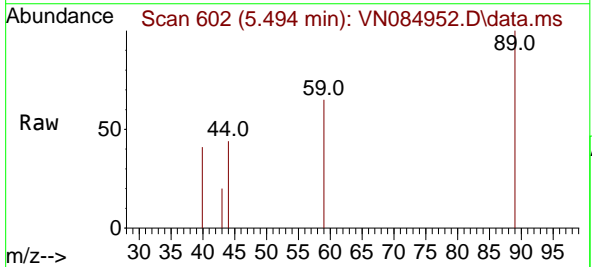


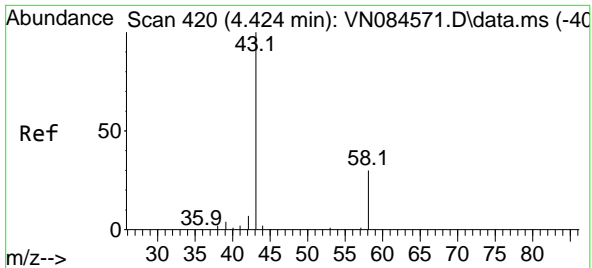
Tgt Ion: 64 Resp: 283  
 Ion Ratio Lower Upper  
 64 100  
 66 0.0 23.5 35.3#



#11  
 Tert butyl alcohol  
 Concen: 5.832 ug/l  
 RT: 5.494 min Scan# 602  
 Delta R.T. -0.029 min  
 Lab File: VN084952.D  
 Acq: 19 Nov 2024 17:16

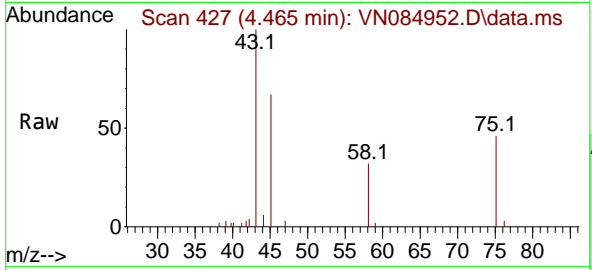
Tgt Ion: 59 Resp: 2075  
 Ion Ratio Lower Upper  
 59 100  
 57 0.0 8.2 12.2#



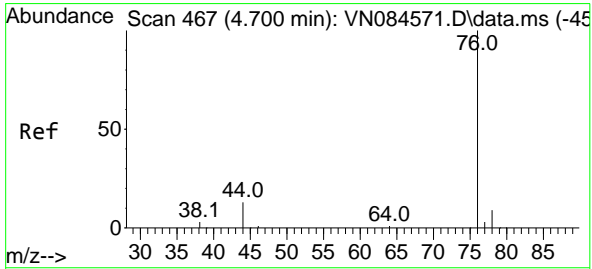
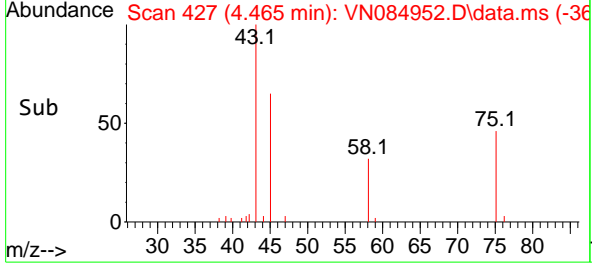
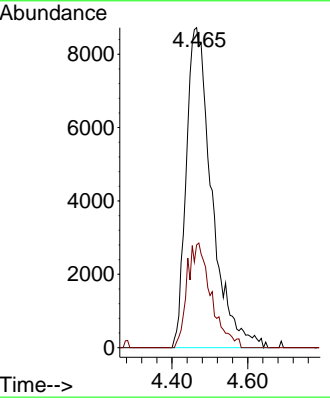


#16  
 Acetone  
 Concen: 50.117 ug/l  
 RT: 4.465 min Scan# 41  
 Delta R.T. 0.041 min  
 Lab File: VN084952.D  
 Acq: 19 Nov 2024 17:16

Instrument : MSVOA\_N  
 ClientSampleId :

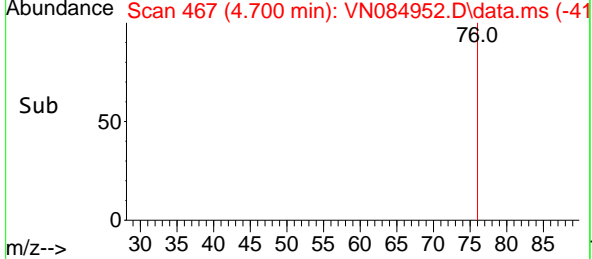
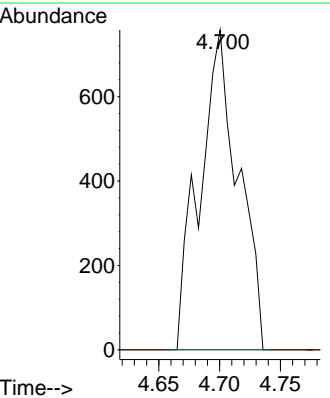
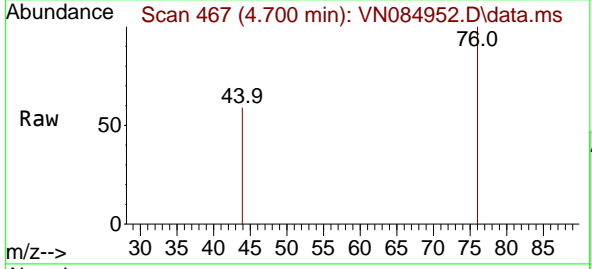


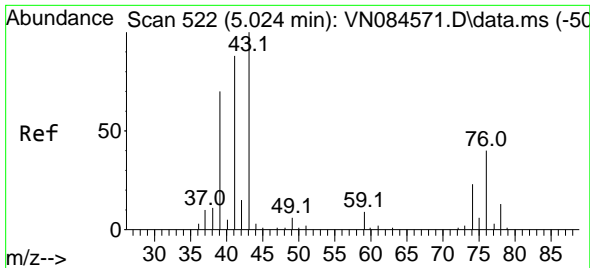
Tgt Ion: 43 Resp: 40801  
 Ion Ratio Lower Upper  
 43 100  
 58 32.1 24.4 36.6



#17  
 Carbon Disulfide  
 Concen: 0.257 ug/l  
 RT: 4.700 min Scan# 467  
 Delta R.T. -0.012 min  
 Lab File: VN084952.D  
 Acq: 19 Nov 2024 17:16

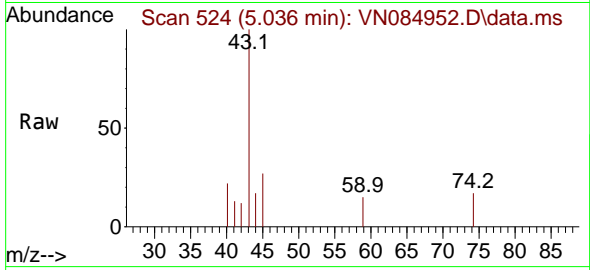
Tgt Ion: 76 Resp: 1682  
 Ion Ratio Lower Upper  
 76 100  
 78 0.0 7.3 10.9#



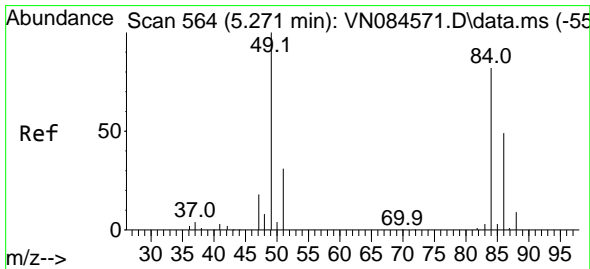
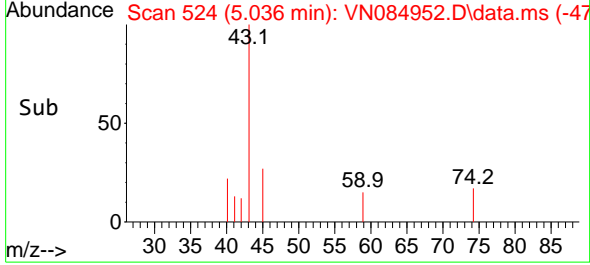
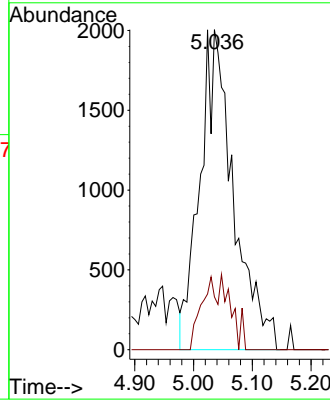


#18  
 Methyl Acetate  
 Concen: Below Cal  
 RT: 5.036 min Scan# 51  
 Delta R.T. 0.018 min  
 Lab File: VN084952.D  
 Acq: 19 Nov 2024 17:16

Instrument :  
 MSVOA\_N  
 ClientSampleId :

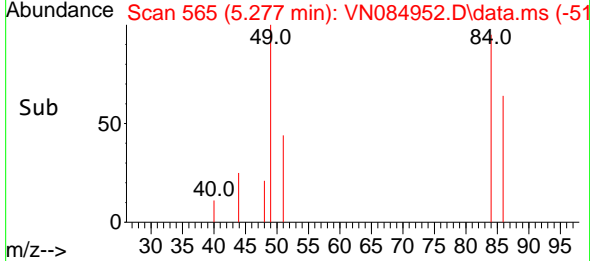
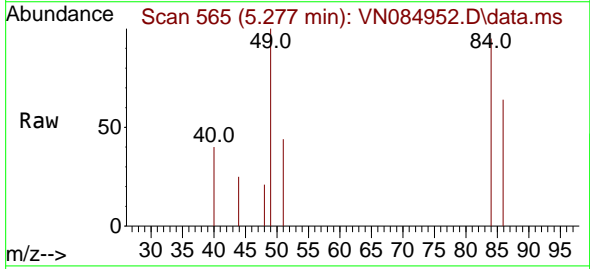
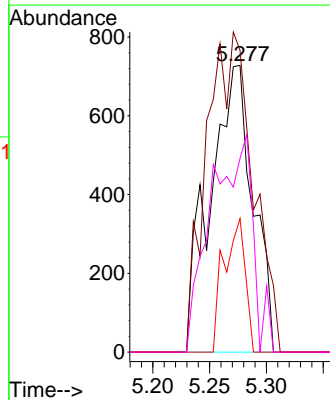


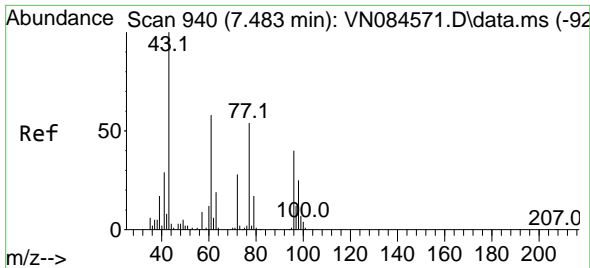
Tgt Ion: 43 Resp: 7978  
 Ion Ratio Lower Upper  
 43 100  
 74 10.5 19.2 28.8#



#20  
 Methylene Chloride  
 Concen: 0.807 ug/l  
 RT: 5.277 min Scan# 565  
 Delta R.T. -0.000 min  
 Lab File: VN084952.D  
 Acq: 19 Nov 2024 17:16

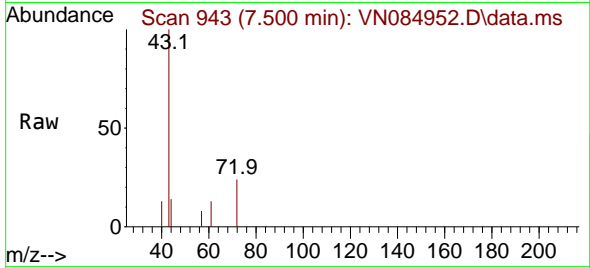
Tgt Ion: 84 Resp: 1913  
 Ion Ratio Lower Upper  
 84 100  
 49 105.2 107.2 160.8#  
 51 46.6 31.8 47.8  
 86 67.6 52.9 79.3



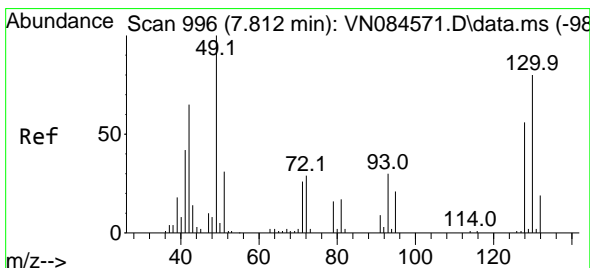
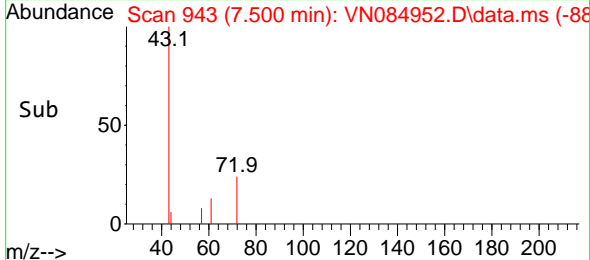
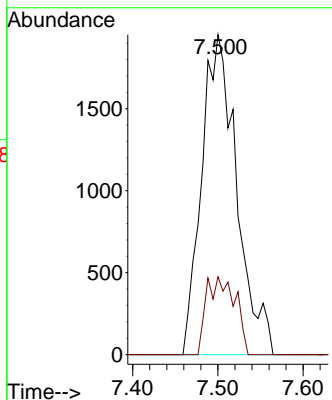


#25  
 2-Butanone  
 Concen: 4.435 ug/l  
 RT: 7.500 min Scan# 94  
 Delta R.T. 0.018 min  
 Lab File: VN084952.D  
 Acq: 19 Nov 2024 17:16

Instrument :  
 MSVOA\_N  
 ClientSampleId :

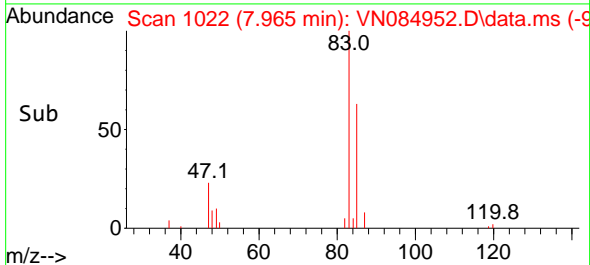
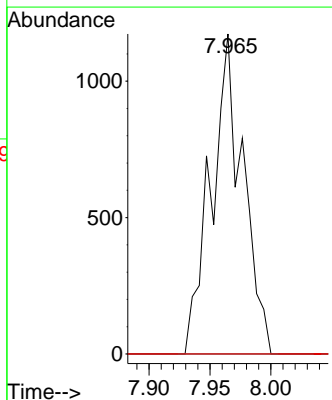
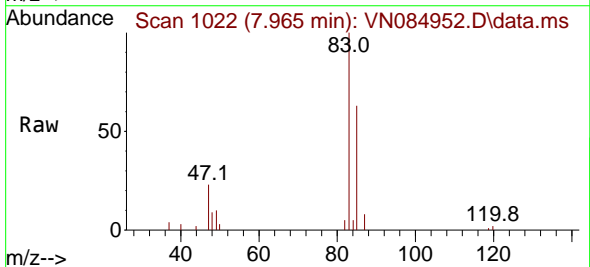


Tgt Ion: 43 Resp: 5578  
 Ion Ratio Lower Upper  
 43 100  
 72 24.3 21.4 32.2

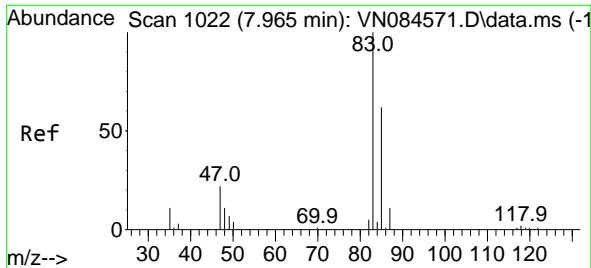


#28  
 Bromochloromethane  
 Concen: 1.302 ug/l  
 RT: 7.965 min Scan# 1022  
 Delta R.T. 0.153 min  
 Lab File: VN084952.D  
 Acq: 19 Nov 2024 17:16

Tgt Ion: 49 Resp: 2133  
 Ion Ratio Lower Upper  
 49 100  
 129 0.0 0.0 3.6  
 130 0.0 58.0 87.0#



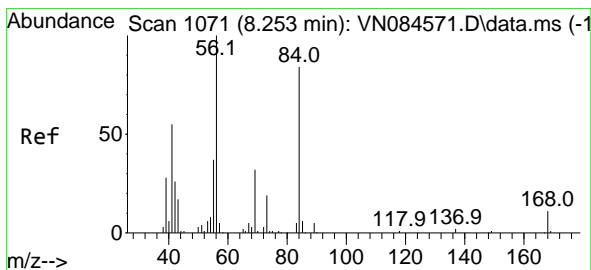
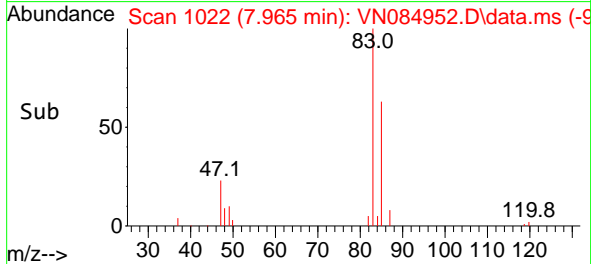
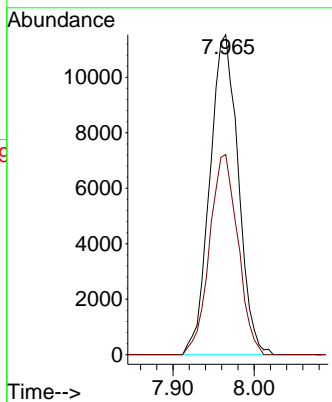
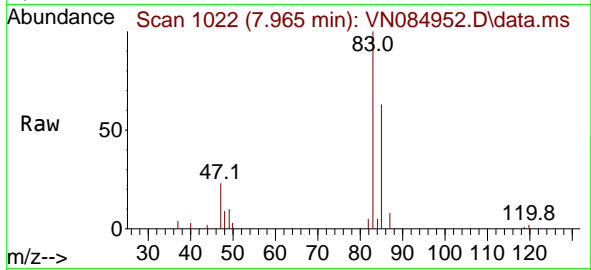




#30  
 Chloroform  
 Concen: 6.712 ug/l  
 RT: 7.965 min Scan# 1065  
 Delta R.T. -0.000 min  
 Lab File: VN084952.D  
 Acq: 19 Nov 2024 17:16

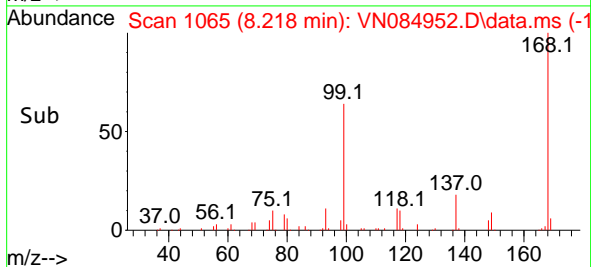
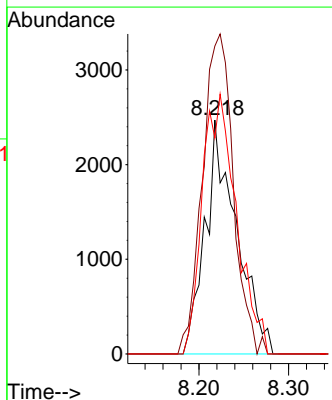
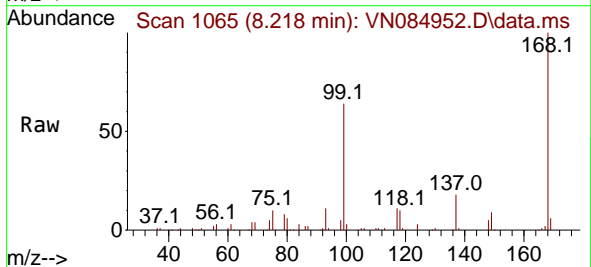
Instrument : MSVOA\_N  
 ClientSampleId :

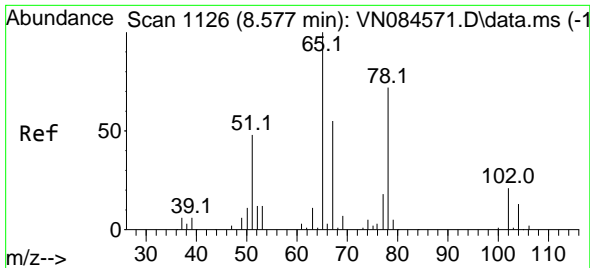
Tgt Ion: 83 Resp: 28093  
 Ion Ratio Lower Upper  
 83 100  
 85 62.5 51.0 76.4



#31  
 Cyclohexane  
 Concen: 1.606 ug/l  
 RT: 8.218 min Scan# 1065  
 Delta R.T. -0.035 min  
 Lab File: VN084952.D  
 Acq: 19 Nov 2024 17:16

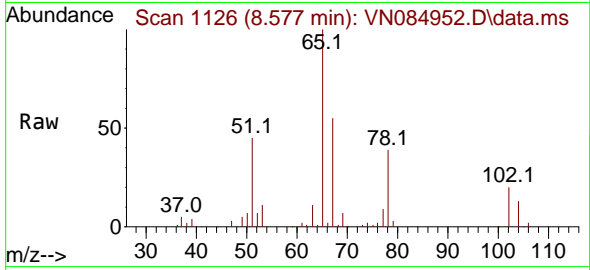
Tgt Ion: 56 Resp: 5978  
 Ion Ratio Lower Upper  
 56 100  
 69 131.6 23.8 35.6#  
 84 92.3 68.8 103.2



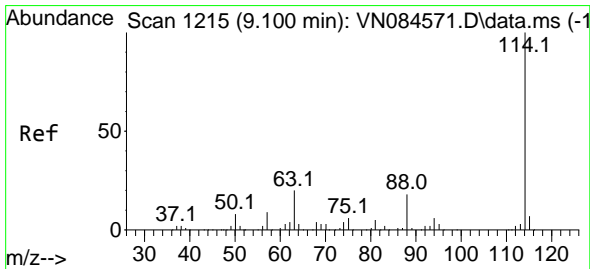
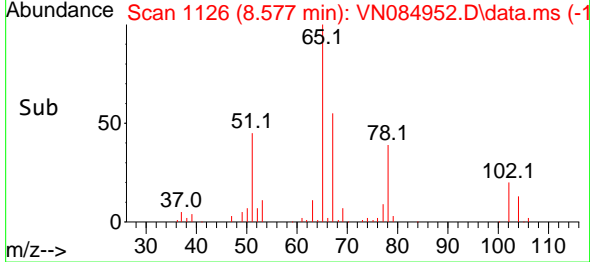
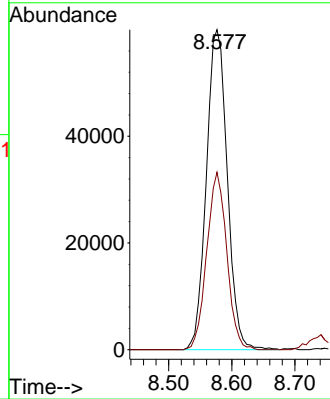


#33  
 1,2-Dichloroethane-d4  
 Concen: 51.141 ug/l  
 RT: 8.577 min Scan# 1126  
 Delta R.T. -0.000 min  
 Lab File: VN084952.D  
 Acq: 19 Nov 2024 17:16

Instrument : MSVOA\_N  
 ClientSampleId :

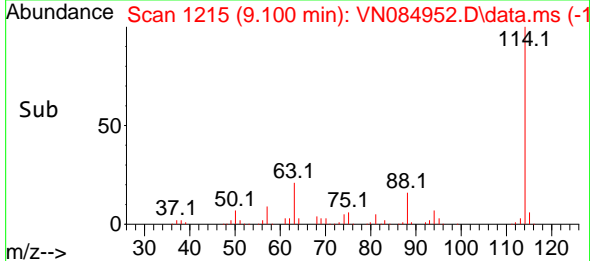
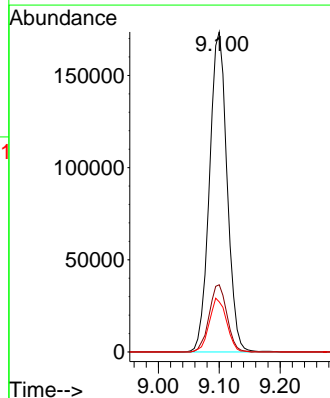
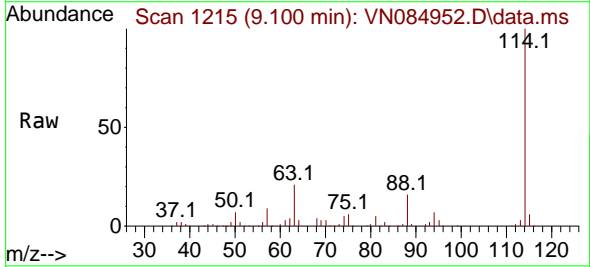


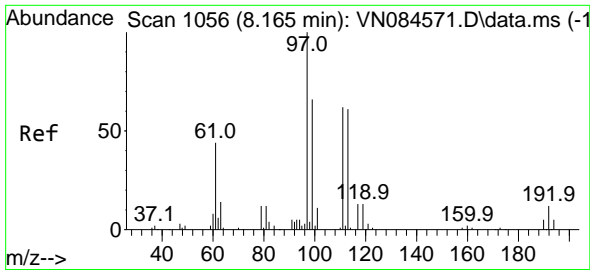
Tgt Ion: 65 Resp: 137860  
 Ion Ratio Lower Upper  
 65 100  
 67 53.1 0.0 102.0



#34  
 1,4-Difluorobenzene  
 Concen: 50.000 ug/l  
 RT: 9.100 min Scan# 1215  
 Delta R.T. 0.000 min  
 Lab File: VN084952.D  
 Acq: 19 Nov 2024 17:16

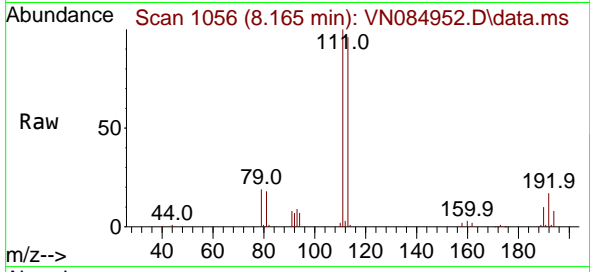
Tgt Ion: 114 Resp: 348139  
 Ion Ratio Lower Upper  
 114 100  
 63 21.0 0.0 43.8  
 88 15.7 0.0 31.6



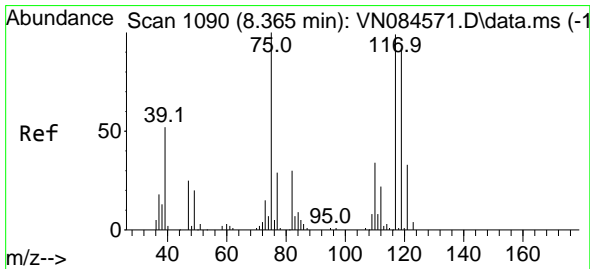
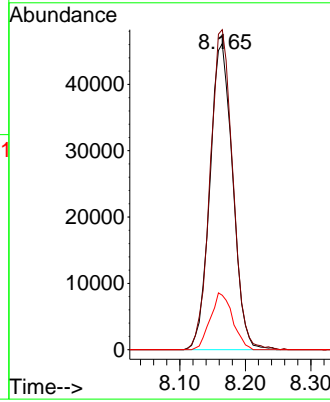
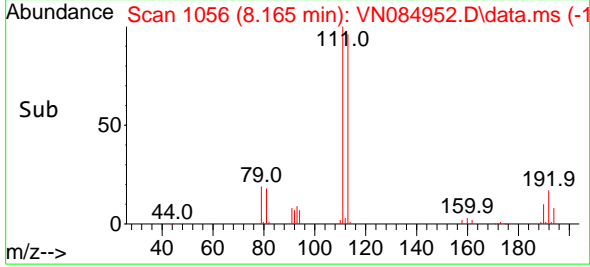


#35  
 Dibromofluoromethane  
 Concen: 47.379 ug/l  
 RT: 8.165 min Scan# 1065  
 Delta R.T. -0.000 min  
 Lab File: VN084952.D  
 Acq: 19 Nov 2024 17:16

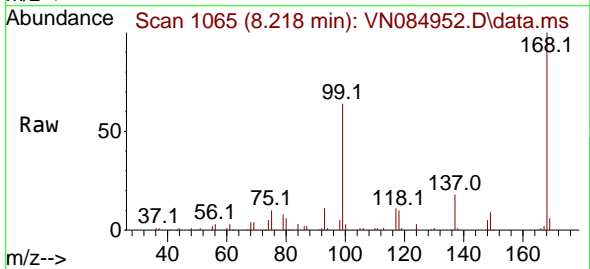
Instrument : MSVOA\_N  
 ClientSampleId :



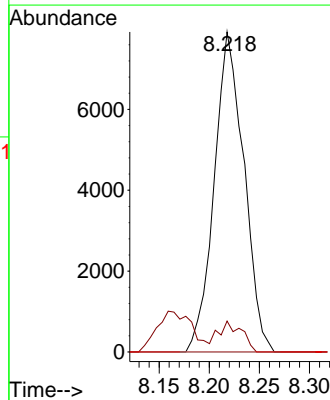
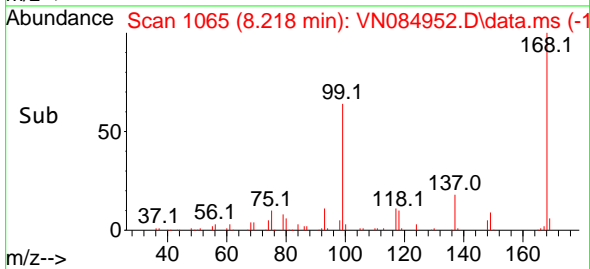
Tgt Ion:113 Resp: 111647  
 Ion Ratio Lower Upper  
 113 100  
 111 103.6 83.3 124.9  
 192 18.0 13.5 20.3

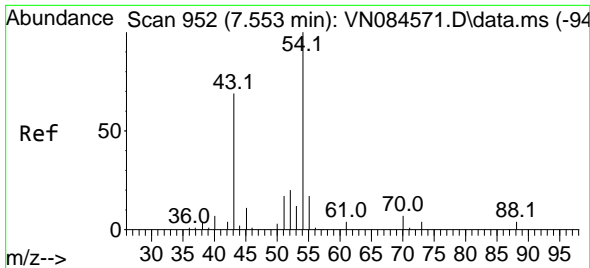


#36  
 1,1-Dichloropropene  
 Concen: 4.993 ug/l  
 RT: 8.218 min Scan# 1065  
 Delta R.T. -0.153 min  
 Lab File: VN084952.D  
 Acq: 19 Nov 2024 17:16



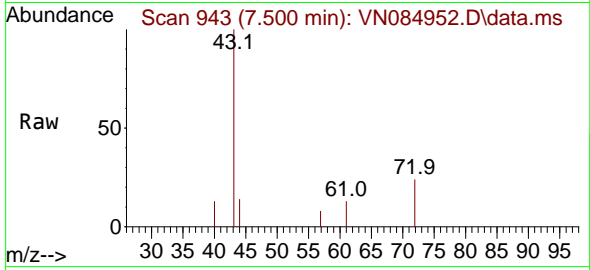
Tgt Ion: 75 Resp: 16317  
 Ion Ratio Lower Upper  
 75 100  
 110 7.5 16.9 50.7#  
 77 0.0 24.7 37.1#





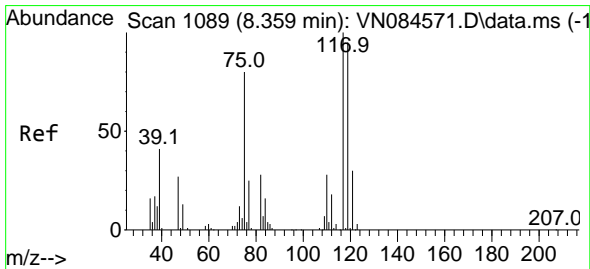
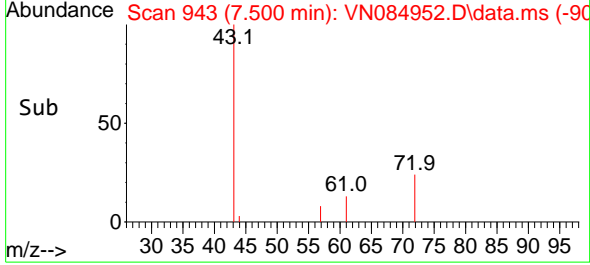
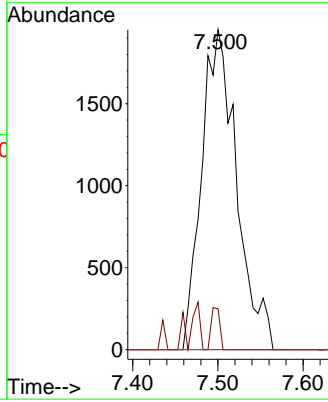
#37  
 Ethyl Acetate  
 Concen: 1.881 ug/l  
 RT: 7.500 min Scan# 94  
 Delta R.T. -0.059 min  
 Lab File: VN084952.D  
 Acq: 19 Nov 2024 17:16

Instrument : MSVOA\_N  
 ClientSampleId :



Tgt Ion: 43 Resp: 5578

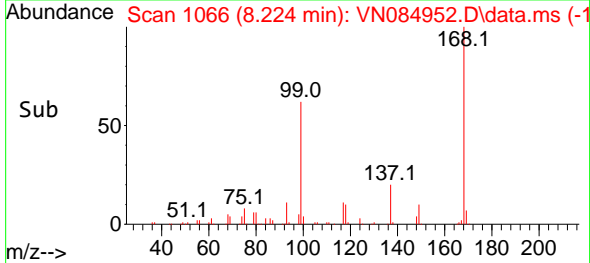
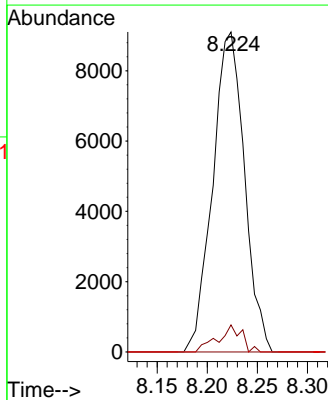
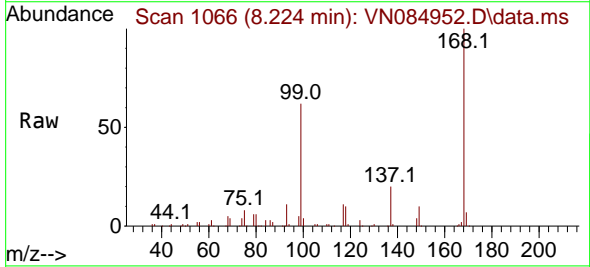
Ion	Ratio	Lower	Upper
43	100		
61	3.2	10.7	16.1#
70	0.0	8.8	13.2#

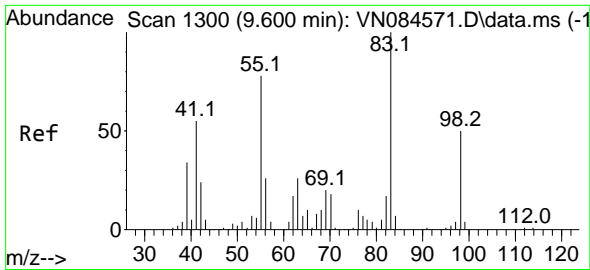


#38  
 Carbon Tetrachloride  
 Concen: 5.491 ug/l  
 RT: 8.224 min Scan# 1066  
 Delta R.T. -0.135 min  
 Lab File: VN084952.D  
 Acq: 19 Nov 2024 17:16

Tgt Ion: 117 Resp: 20060

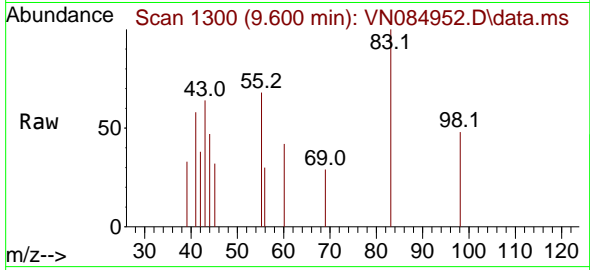
Ion	Ratio	Lower	Upper
117	100		
119	8.5	78.7	118.1#
121	0.0	24.4	36.6#





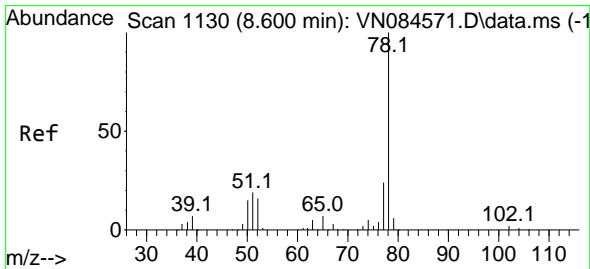
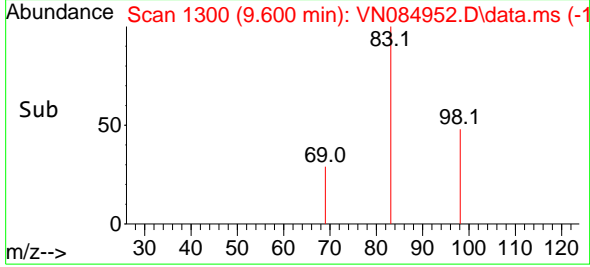
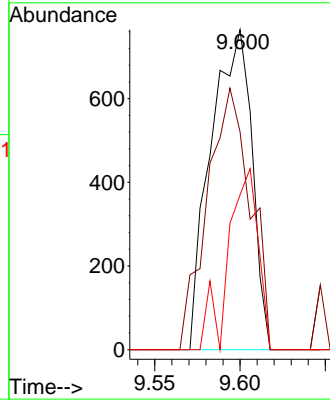
#39  
 Methylcyclohexane  
 Concen: 0.386 ug/l  
 RT: 9.600 min Scan# 1130  
 Delta R.T. -0.000 min  
 Lab File: VN084952.D  
 Acq: 19 Nov 2024 17:16

Instrument :  
 MSVOA\_N  
 ClientSampleId :



Tgt Ion: 83 Resp: 1282

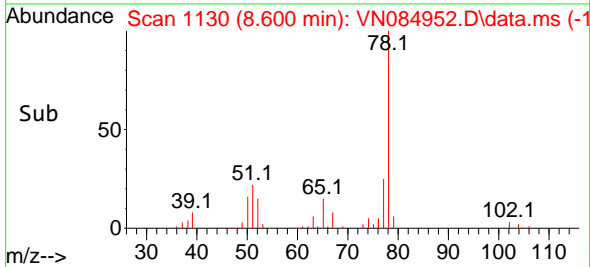
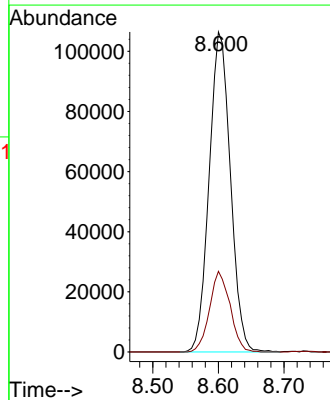
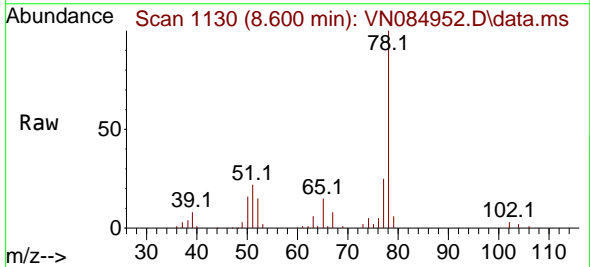
Ion	Ratio	Lower	Upper
83	100		
55	68.1	62.8	94.2
98	48.4	38.8	58.2

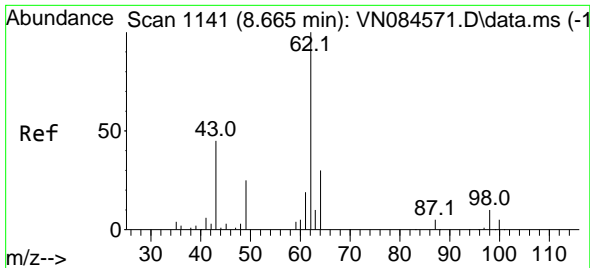


#40  
 Benzene  
 Concen: 22.856 ug/l  
 RT: 8.600 min Scan# 1130  
 Delta R.T. -0.006 min  
 Lab File: VN084952.D  
 Acq: 19 Nov 2024 17:16

Tgt Ion: 78 Resp: 239883

Ion	Ratio	Lower	Upper
78	100		
77	25.2	19.1	28.7

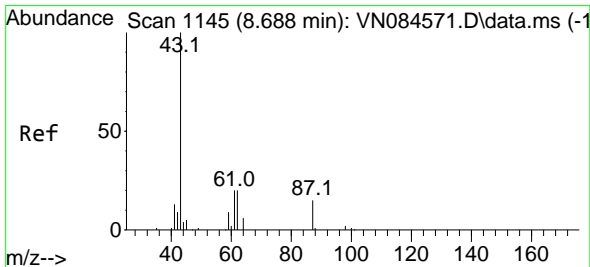
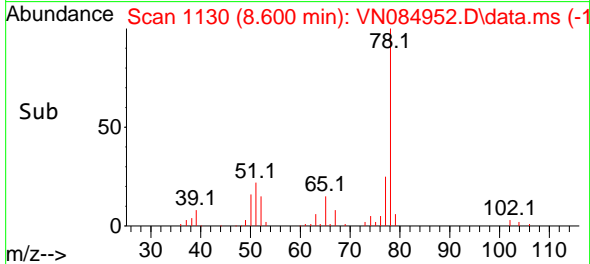
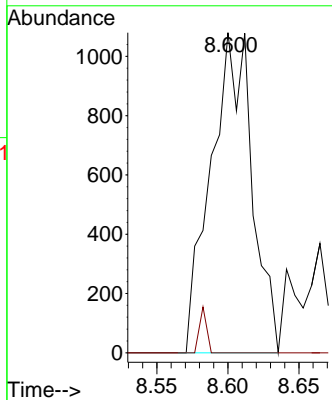
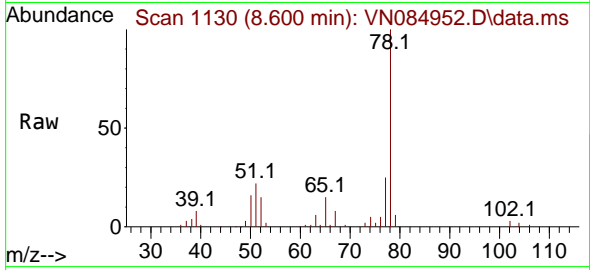




#42  
 1,2-Dichloroethane  
 Concen: 0.640 ug/l  
 RT: 8.600 min Scan# 1143  
 Delta R.T. -0.071 min  
 Lab File: VN084952.D  
 Acq: 19 Nov 2024 17:16

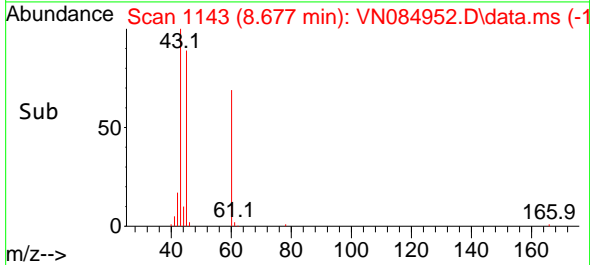
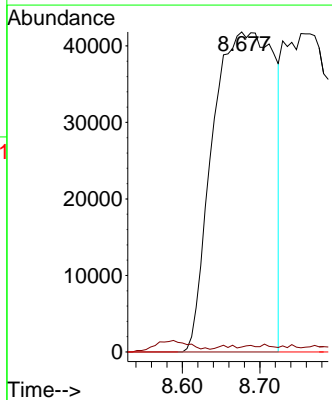
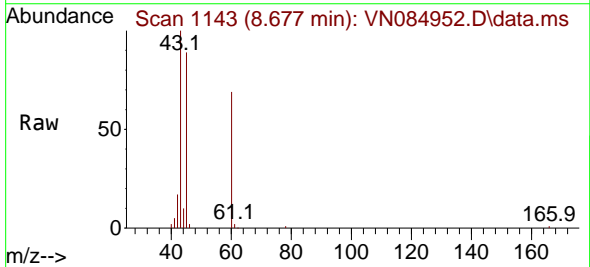
Instrument : MSVOA\_N  
 ClientSampleId :

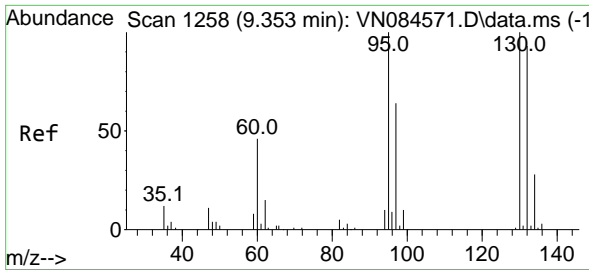
Tgt Ion	Resp	Ion Ratio	Lower	Upper
62	2175	100		
98		2.5	0.0	18.2



#43  
 Isopropyl Acetate  
 Concen: 41.730 ug/l  
 RT: 8.677 min Scan# 1143  
 Delta R.T. -0.011 min  
 Lab File: VN084952.D  
 Acq: 19 Nov 2024 17:16

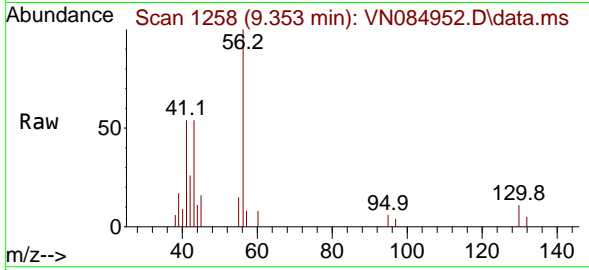
Tgt Ion	Resp	Ion Ratio	Lower	Upper
43	229468	100		
61		0.1	20.4	30.6#
87		0.0	10.3	15.5#



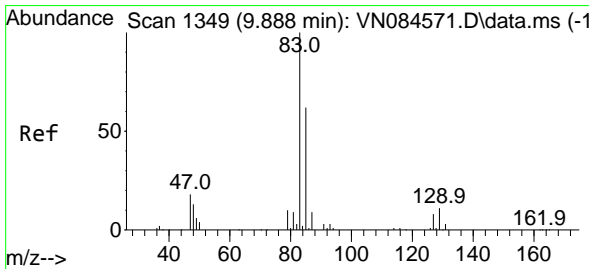
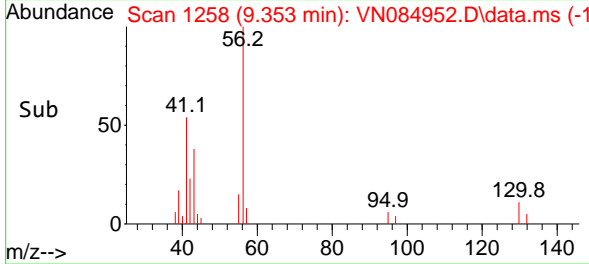
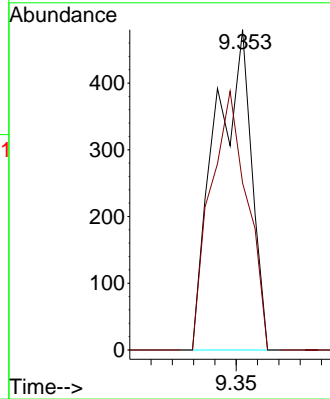


#44  
 Trichloroethene  
 Concen: 0.235 ug/l  
 RT: 9.353 min Scan# 11  
 Delta R.T. 0.006 min  
 Lab File: VN084952.D  
 Acq: 19 Nov 2024 17:16

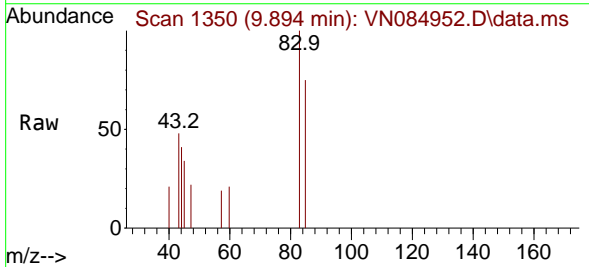
Instrument :  
 MSVOA\_N  
 ClientSampleId :



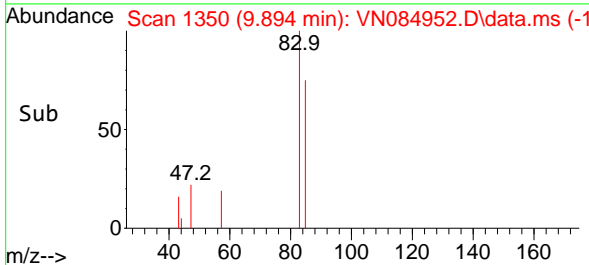
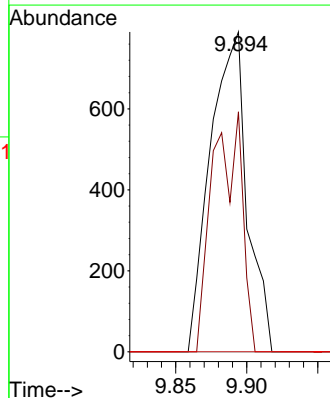
Tgt Ion:130 Resp: 568  
 Ion Ratio Lower Upper  
 130 100  
 95 52.1 0.0 203.0

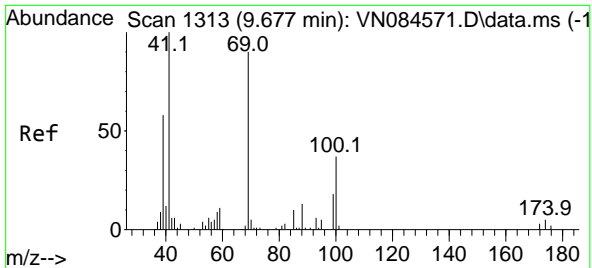


#47  
 Bromodichloromethane  
 Concen: 0.390 ug/l  
 RT: 9.894 min Scan# 1350  
 Delta R.T. 0.006 min  
 Lab File: VN084952.D  
 Acq: 19 Nov 2024 17:16



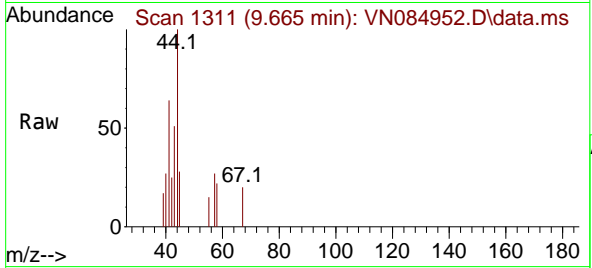
Tgt Ion: 83 Resp: 1429  
 Ion Ratio Lower Upper  
 83 100  
 85 75.1 51.5 77.3  
 127 0.0 5.7 8.5#





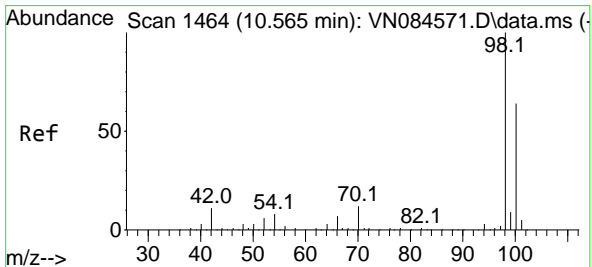
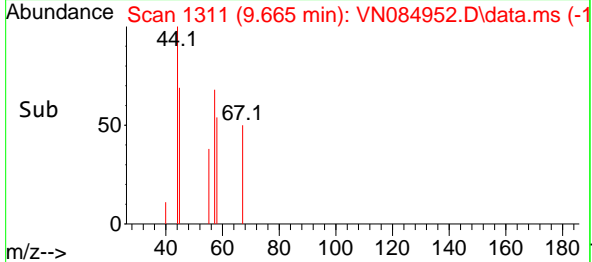
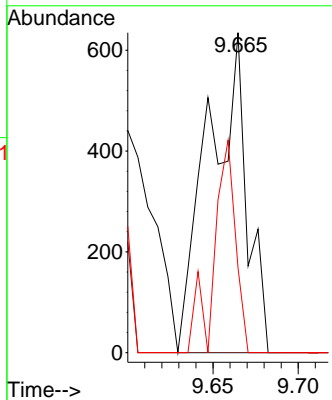
#48  
 Methyl methacrylate  
 Concen: 0.432 ug/l  
 RT: 9.665 min Scan# 11  
 Delta R.T. -0.012 min  
 Lab File: VN084952.D  
 Acq: 19 Nov 2024 17:16

Instrument :  
 MSVOA\_N  
 ClientSampleId :



Tgt Ion: 41 Resp: 997

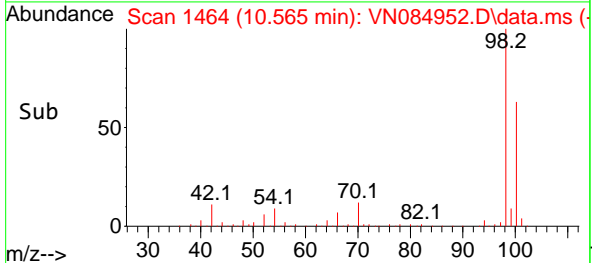
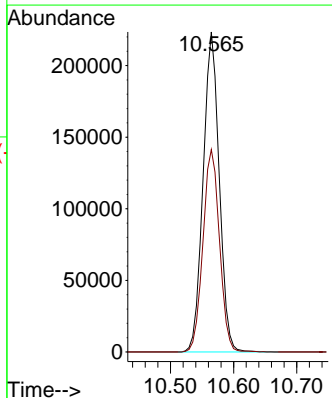
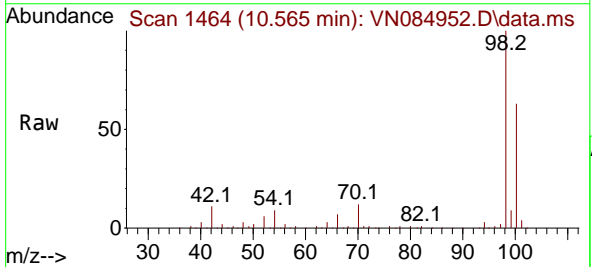
Ion	Ratio	Lower	Upper
41	100		
69	0.0	67.1	100.7#
39	37.3	45.8	68.6#



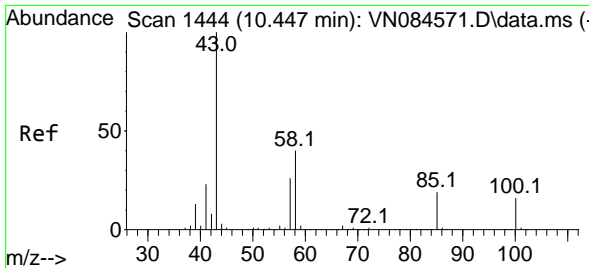
#50  
 Toluene-d8  
 Concen: 45.675 ug/l  
 RT: 10.565 min Scan# 1464  
 Delta R.T. -0.000 min  
 Lab File: VN084952.D  
 Acq: 19 Nov 2024 17:16

Tgt Ion: 98 Resp: 396481

Ion	Ratio	Lower	Upper
98	100		
100	64.8	52.7	79.1



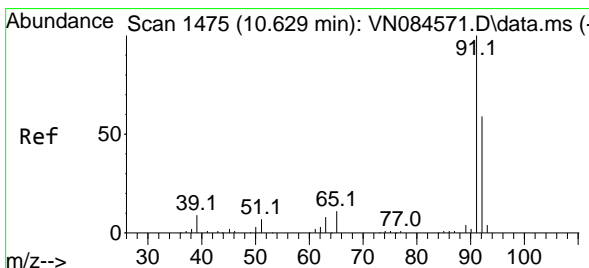
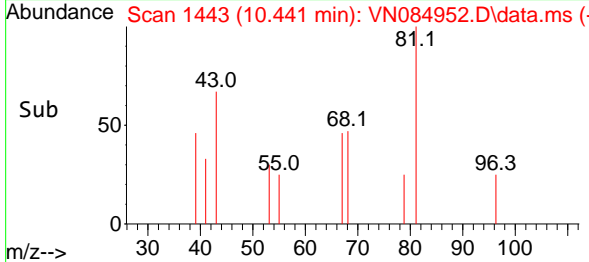
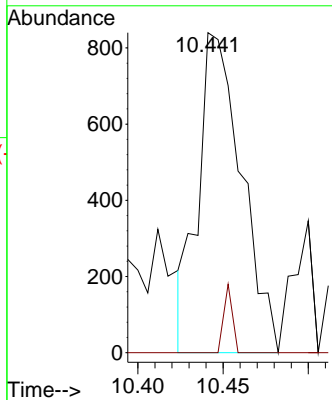
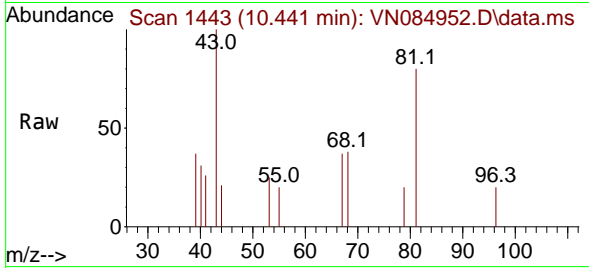




#51  
 4-Methyl-2-Pentanone  
 Concen: 0.526 ug/l  
 RT: 10.441 min Scan# 1443  
 Delta R.T. -0.000 min  
 Lab File: VN084952.D  
 Acq: 19 Nov 2024 17:16

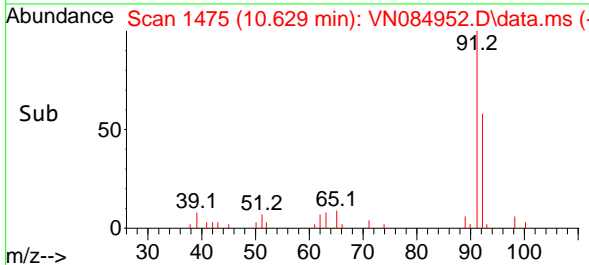
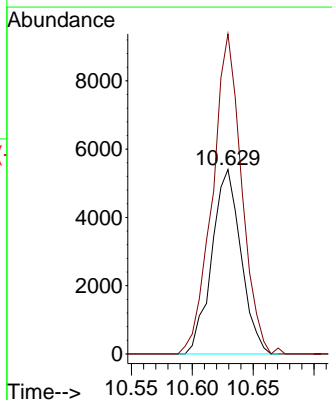
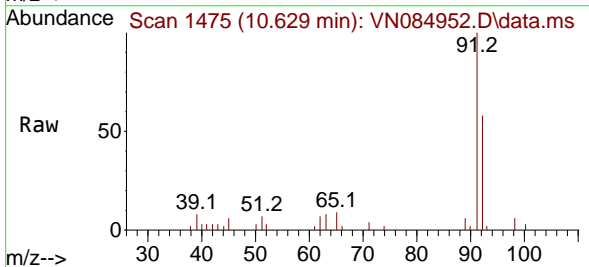
Instrument :  
 MSVOA\_N  
 ClientSampleId :

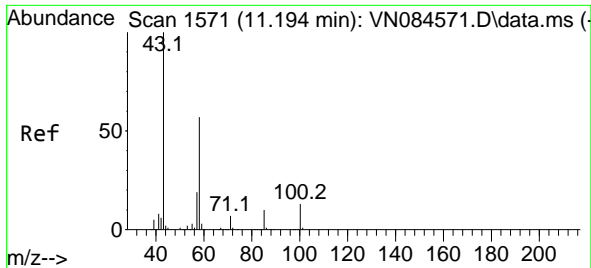
Tgt Ion: 43 Resp: 1488  
 Ion Ratio Lower Upper  
 43 100  
 58 0.0 31.6 47.4#



#52  
 Toluene  
 Concen: 1.465 ug/l  
 RT: 10.629 min Scan# 1475  
 Delta R.T. -0.000 min  
 Lab File: VN084952.D  
 Acq: 19 Nov 2024 17:16

Tgt Ion: 92 Resp: 8992  
 Ion Ratio Lower Upper  
 92 100  
 91 174.0 137.3 205.9

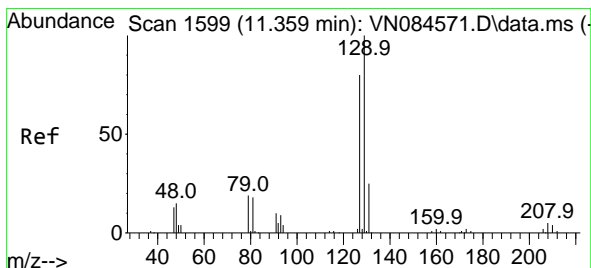
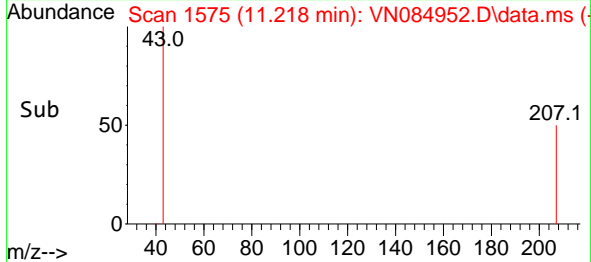
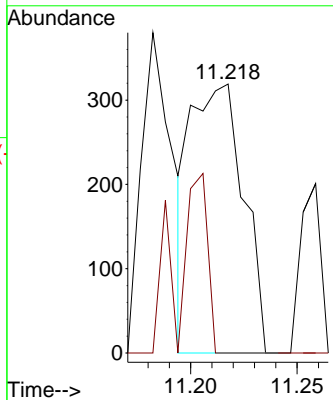
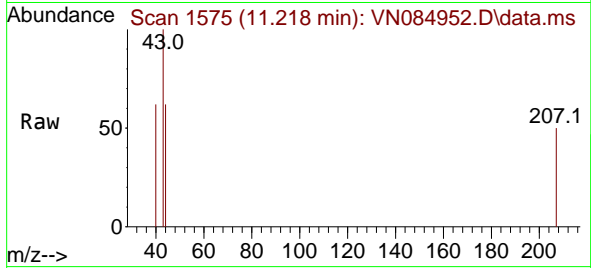




#59  
 2-Hexanone  
 Concen: 0.268 ug/l  
 RT: 11.218 min Scan# 11  
 Delta R.T. 0.023 min  
 Lab File: VN084952.D  
 Acq: 19 Nov 2024 17:16

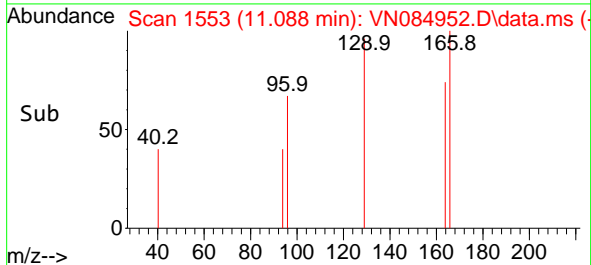
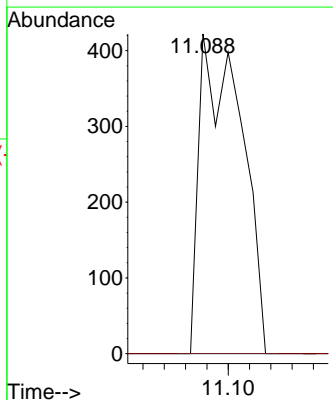
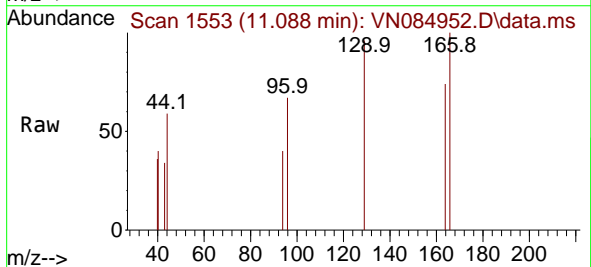
Instrument :  
 MSVOA\_N  
 ClientSampleId :

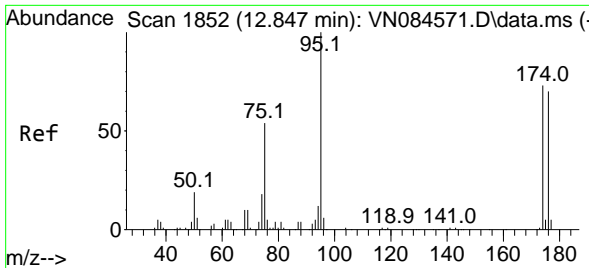
Tgt Ion: 43 Resp: 552  
 Ion Ratio Lower Upper  
 43 100  
 58 37.7 27.3 81.8



#60  
 Dibromochloromethane  
 Concen: 0.220 ug/l  
 RT: 11.088 min Scan# 1553  
 Delta R.T. -0.271 min  
 Lab File: VN084952.D  
 Acq: 19 Nov 2024 17:16

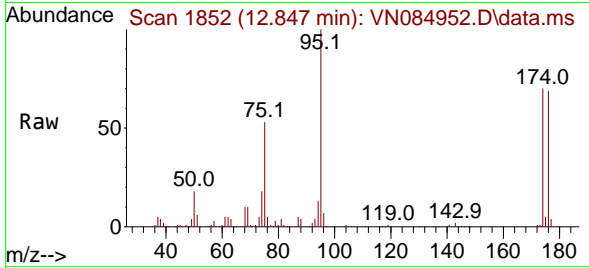
Tgt Ion: 129 Resp: 579  
 Ion Ratio Lower Upper  
 129 100  
 127 0.0 38.3 114.9#



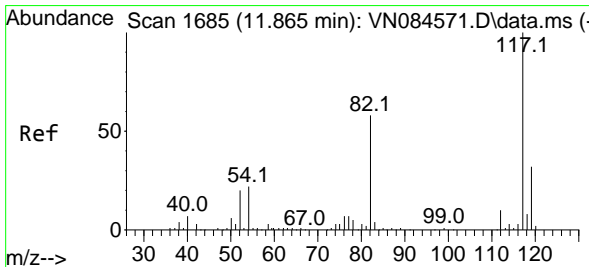
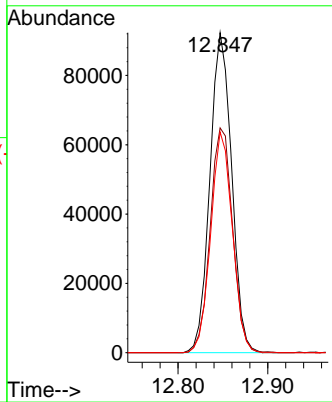
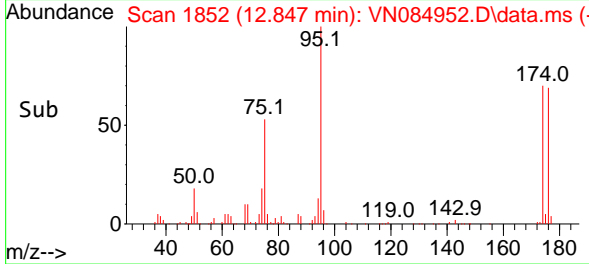


#62  
 4-Bromofluorobenzene  
 Concen: 47.819 ug/l  
 RT: 12.847 min Scan# 1852  
 Delta R.T. -0.000 min  
 Lab File: VN084952.D  
 Acq: 19 Nov 2024 17:16

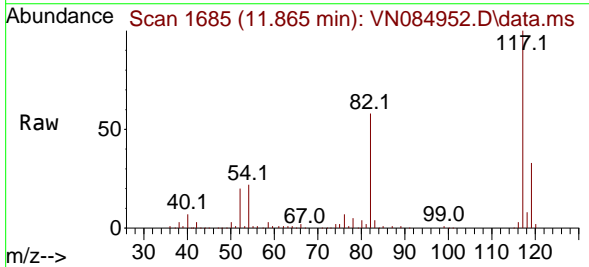
Instrument : MSVOA\_N  
 ClientSampleId :



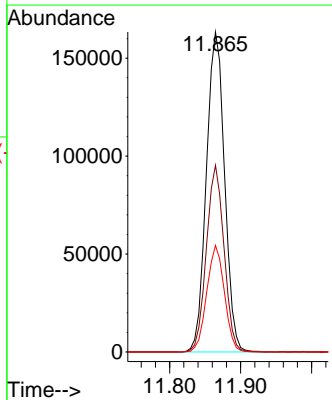
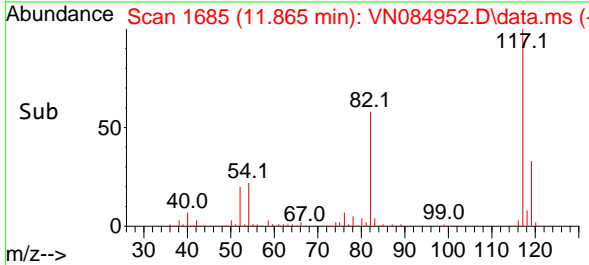
Tgt Ion: 95 Resp: 155133  
 Ion Ratio Lower Upper  
 95 100  
 174 72.5 0.0 145.2  
 176 68.9 0.0 140.0

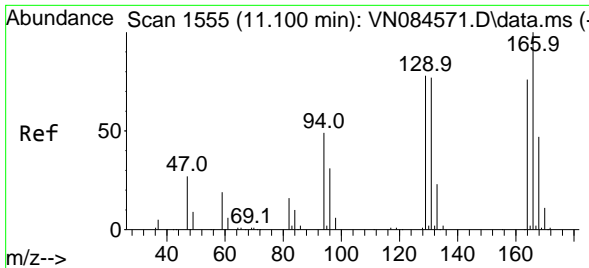


#63  
 Chlorobenzene-d5  
 Concen: 50.000 ug/l  
 RT: 11.865 min Scan# 1685  
 Delta R.T. -0.000 min  
 Lab File: VN084952.D  
 Acq: 19 Nov 2024 17:16



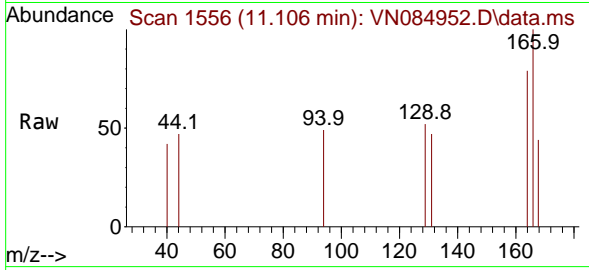
Tgt Ion: 117 Resp: 291141  
 Ion Ratio Lower Upper  
 117 100  
 82 58.3 47.2 70.8  
 119 33.3 25.4 38.0



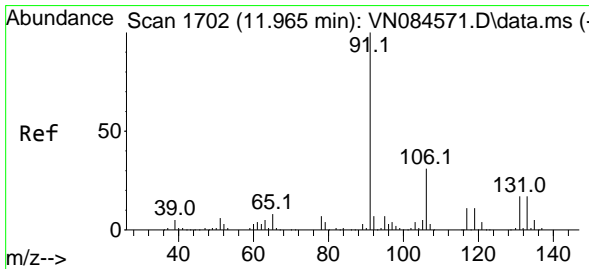
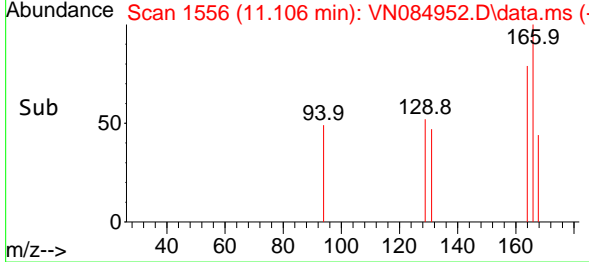
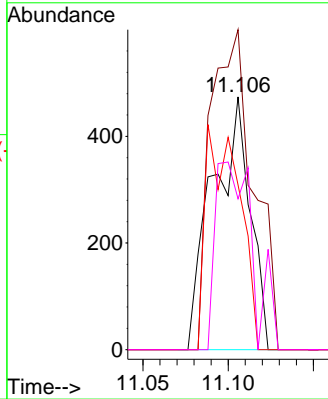


#64  
 Tetrachloroethene  
 Concen: 0.376 ug/l  
 RT: 11.106 min Scan# 11  
 Delta R.T. 0.006 min  
 Lab File: VN084952.D  
 Acq: 19 Nov 2024 17:16

Instrument :  
 MSVOA\_N  
 ClientSampleId :

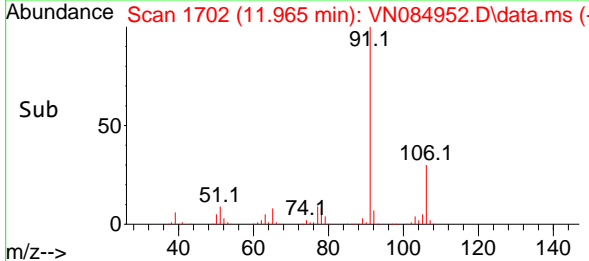
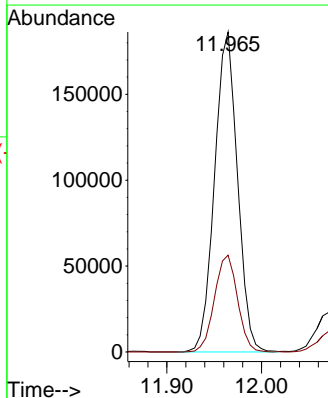
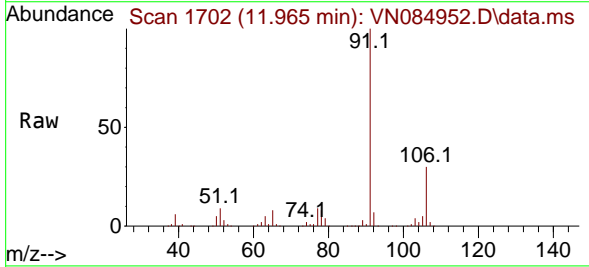


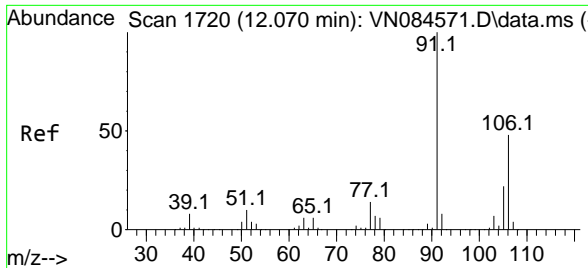
Tgt Ion:164 Resp: 728  
 Ion Ratio Lower Upper  
 164 100  
 166 126.6 101.0 151.4  
 129 65.2 80.8 121.2#  
 131 59.7 78.1 117.1#



#67  
 Ethyl Benzene  
 Concen: 28.788 ug/l  
 RT: 11.965 min Scan# 1702  
 Delta R.T. 0.006 min  
 Lab File: VN084952.D  
 Acq: 19 Nov 2024 17:16

Tgt Ion: 91 Resp: 312990  
 Ion Ratio Lower Upper  
 91 100  
 106 30.3 24.5 36.7

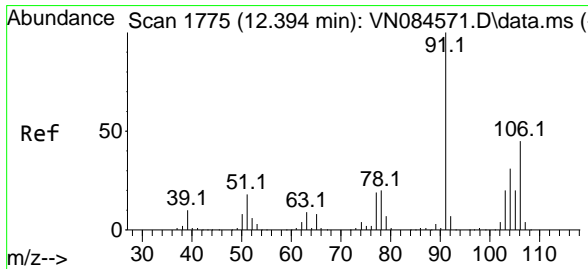
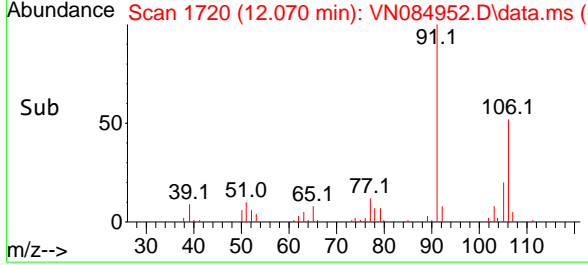
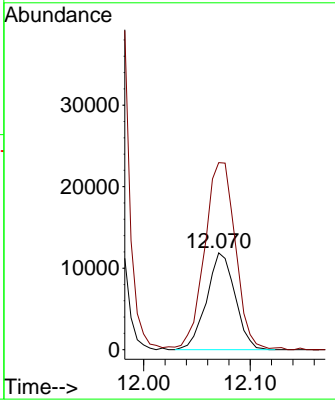
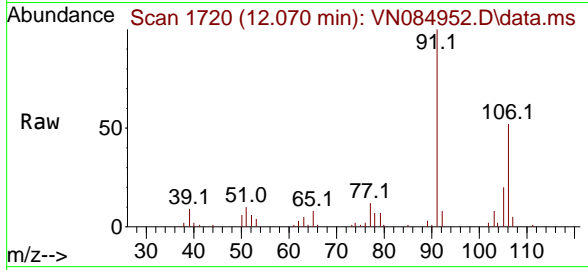




#68  
 m/p-Xylenes  
 Concen: 5.338 ug/l  
 RT: 12.070 min Scan# 11  
 Delta R.T. -0.000 min  
 Lab File: VN084952.D  
 Acq: 19 Nov 2024 17:16

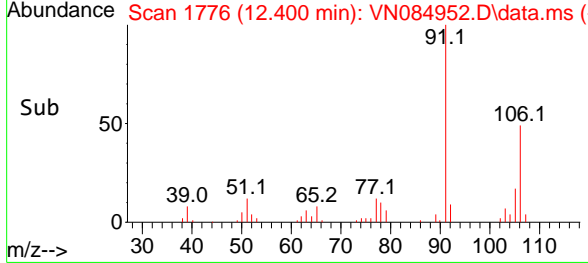
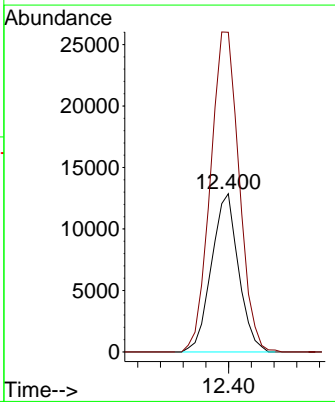
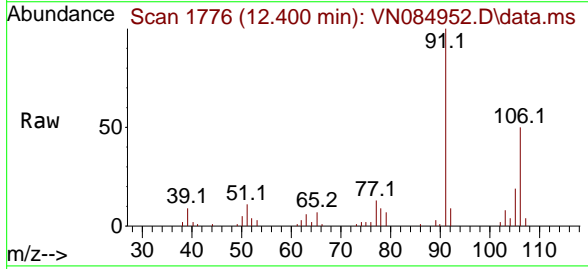
Instrument : MSVOA\_N  
 ClientSampleId :

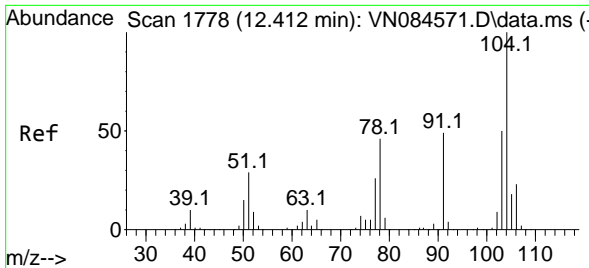
Tgt Ion:106 Resp: 21970  
 Ion Ratio Lower Upper  
 106 100  
 91 209.9 167.1 250.7



#69  
 o-Xylene  
 Concen: 5.529 ug/l  
 RT: 12.400 min Scan# 1776  
 Delta R.T. 0.006 min  
 Lab File: VN084952.D  
 Acq: 19 Nov 2024 17:16

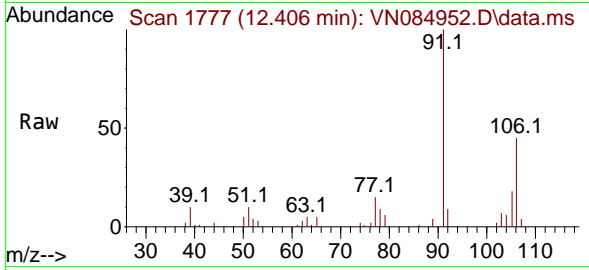
Tgt Ion:106 Resp: 21290  
 Ion Ratio Lower Upper  
 106 100  
 91 214.5 110.2 330.6





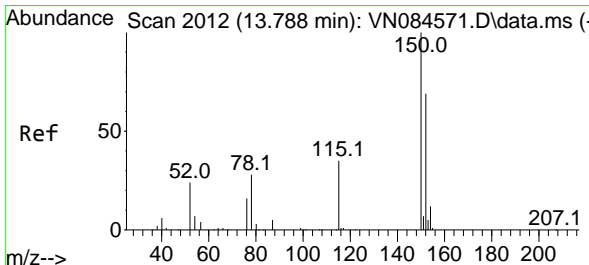
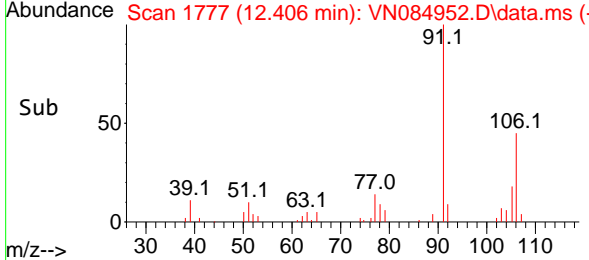
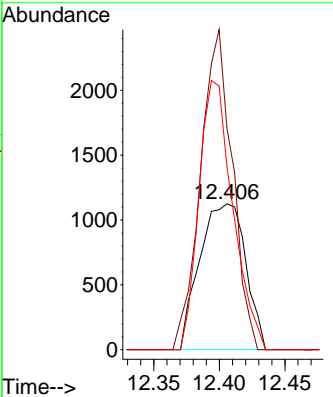
#70  
 Styrene  
 Concen: 0.407 ug/l  
 RT: 12.406 min Scan# 11  
 Delta R.T. -0.006 min  
 Lab File: VN084952.D  
 Acq: 19 Nov 2024 17:16

Instrument : MSVOA\_N  
 ClientSampleId :



Tgt Ion:104 Resp: 2732

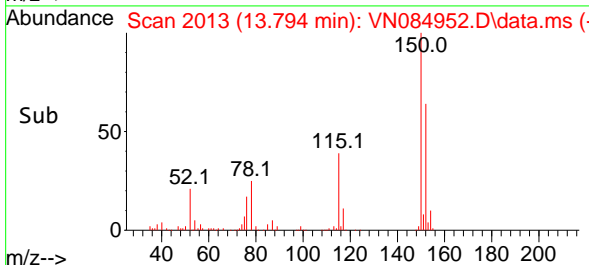
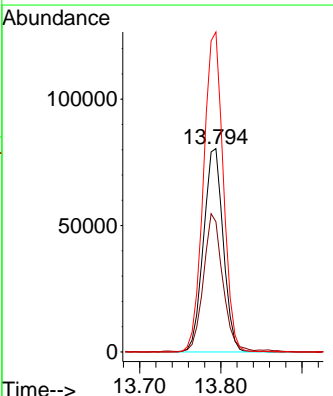
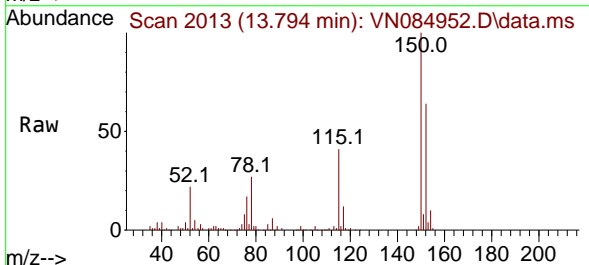
Ion	Ratio	Lower	Upper
104	100		
78	152.7	42.7	64.1#
103	136.3	43.6	65.4#

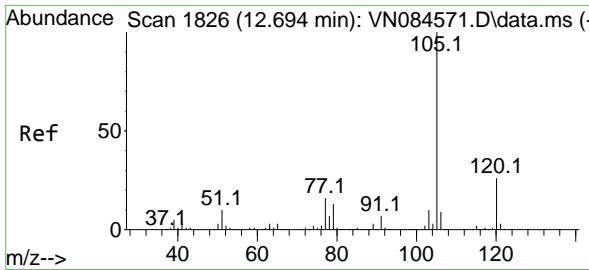


#72  
 1,4-Dichlorobenzene-d4  
 Concen: 50.000 ug/l  
 RT: 13.794 min Scan# 2013  
 Delta R.T. 0.006 min  
 Lab File: VN084952.D  
 Acq: 19 Nov 2024 17:16

Tgt Ion:152 Resp: 135919

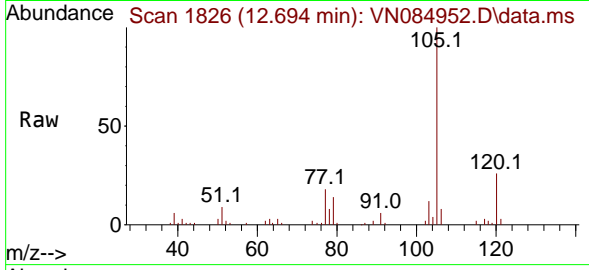
Ion	Ratio	Lower	Upper
152	100		
115	66.0	31.3	93.9
150	157.3	0.0	349.8



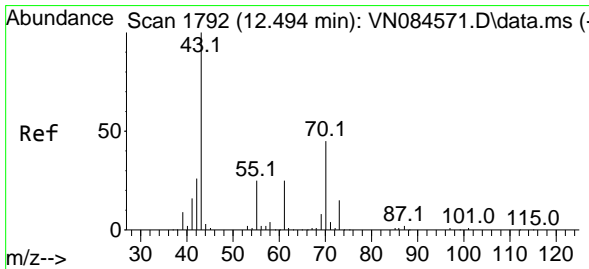
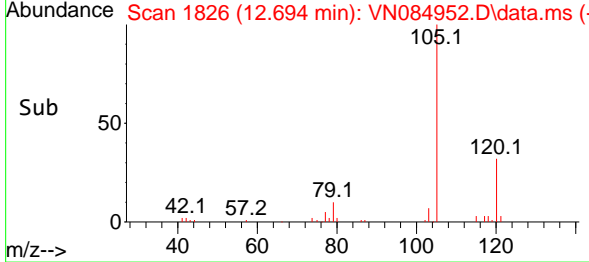
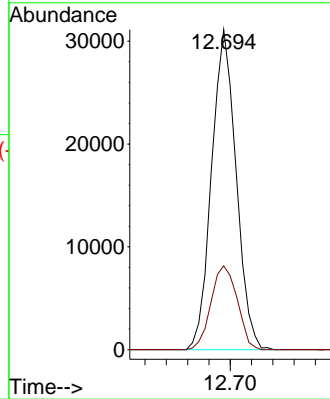


#73  
 Isopropylbenzene  
 Concen: 5.233 ug/l  
 RT: 12.694 min Scan# 11  
 Delta R.T. -0.000 min  
 Lab File: VN084952.D  
 Acq: 19 Nov 2024 17:16

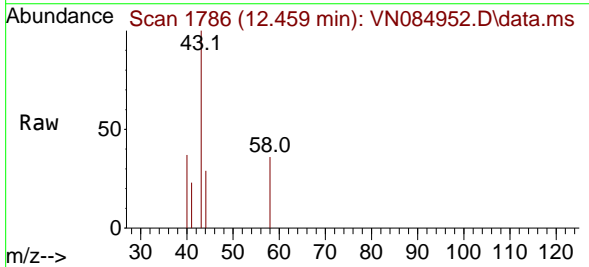
Instrument :  
 MSVOA\_N  
 ClientSampleId :



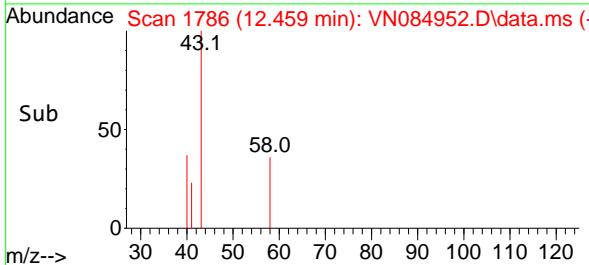
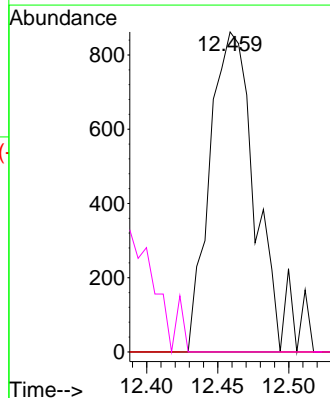
Tgt Ion:105 Resp: 49842  
 Ion Ratio Lower Upper  
 105 100  
 120 28.0 12.9 38.7

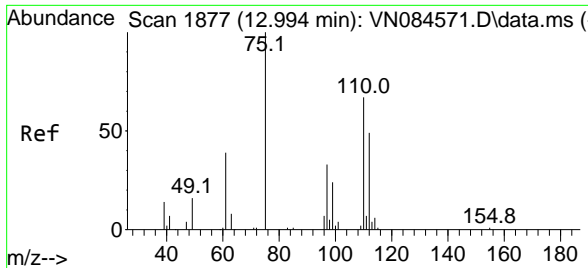


#74  
 N-ethyl acetate  
 Concen: 0.458 ug/l  
 RT: 12.459 min Scan# 1786  
 Delta R.T. -0.035 min  
 Lab File: VN084952.D  
 Acq: 19 Nov 2024 17:16



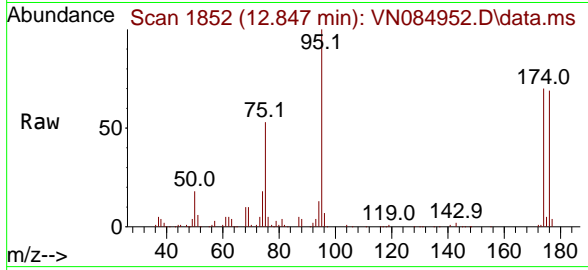
Tgt Ion: 43 Resp: 1856  
 Ion Ratio Lower Upper  
 43 100  
 70 0.0 34.4 51.6#  
 55 0.0 19.6 29.4#  
 61 0.0 19.6 29.4#



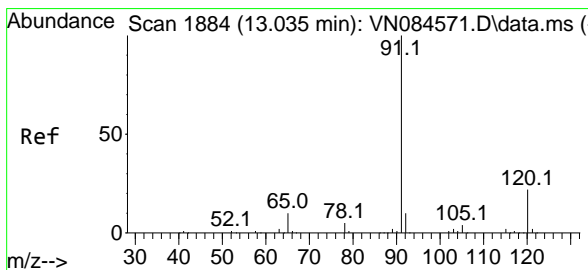
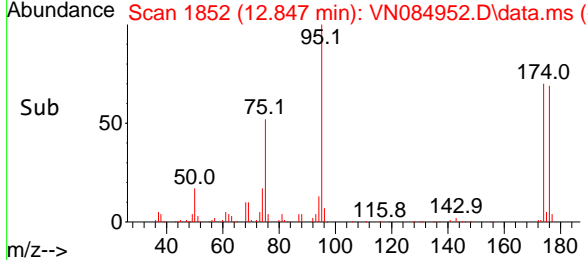
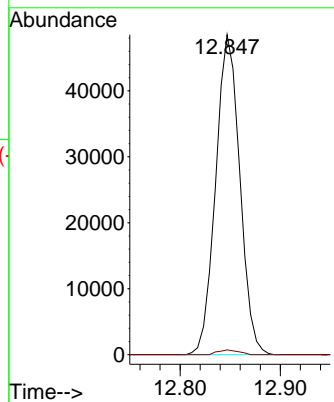


#76  
 1,2,3-Trichloropropane  
 Concen: 29.832 ug/l  
 RT: 12.847 min Scan# 1852  
 Delta R.T. -0.141 min  
 Lab File: VN084952.D  
 Acq: 19 Nov 2024 17:16

Instrument : MSVOA\_N  
 ClientSampleId :

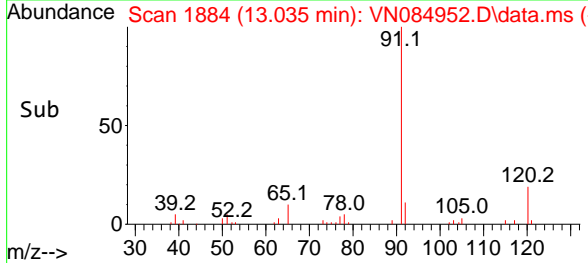
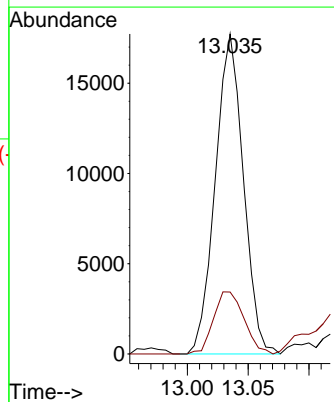
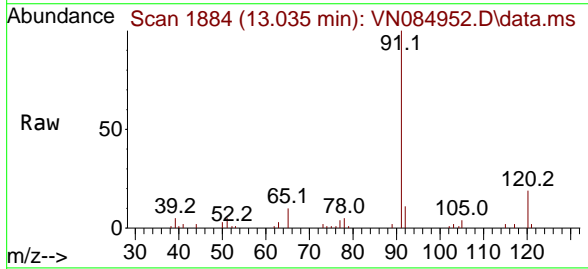


Tgt Ion: 75 Resp: 81052  
 Ion Ratio Lower Upper  
 75 100  
 77 1.3 96.9 290.7#

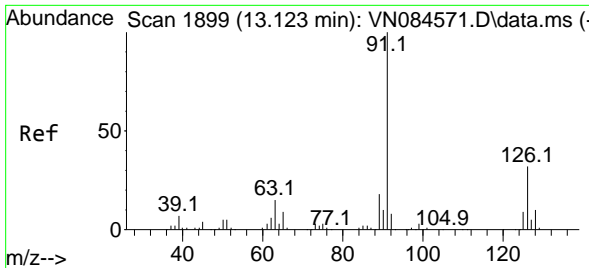


#78  
 n-propylbenzene  
 Concen: 2.547 ug/l  
 RT: 13.035 min Scan# 1884  
 Delta R.T. 0.000 min  
 Lab File: VN084952.D  
 Acq: 19 Nov 2024 17:16

Tgt Ion: 91 Resp: 28430  
 Ion Ratio Lower Upper  
 91 100  
 120 21.1 10.8 32.4

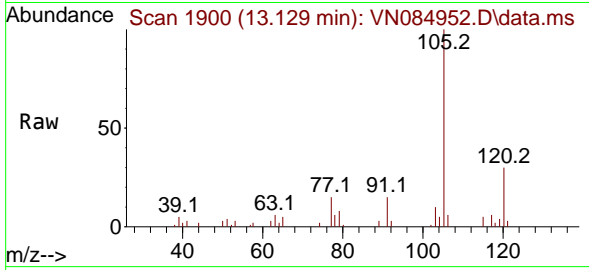




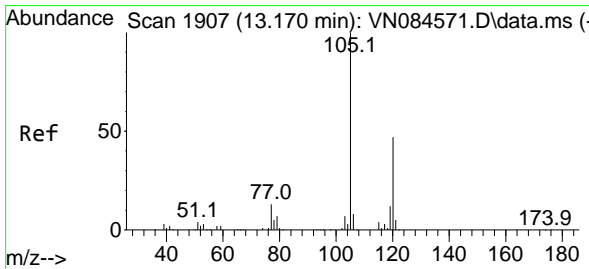
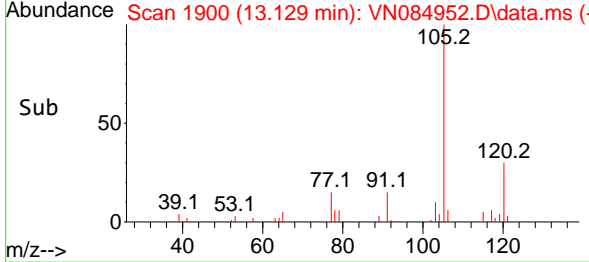
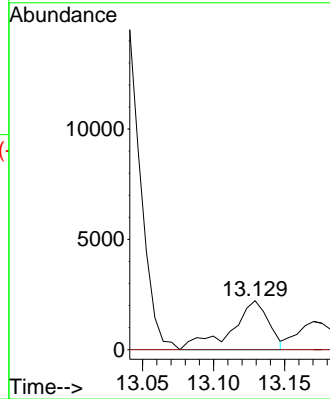


#79  
 2-Chlorotoluene  
 Concen: 0.557 ug/l  
 RT: 13.129 min Scan# 1900  
 Delta R.T. 0.006 min  
 Lab File: VN084952.D  
 Acq: 19 Nov 2024 17:16

Instrument : MSVOA\_N  
 ClientSampleId :

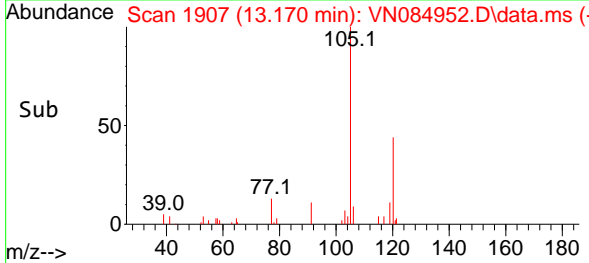
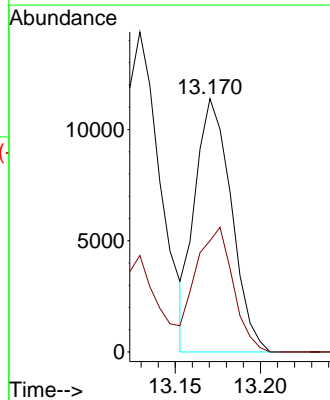
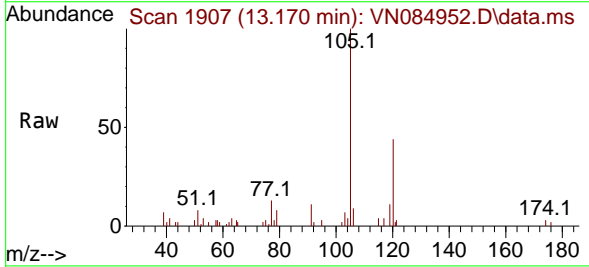


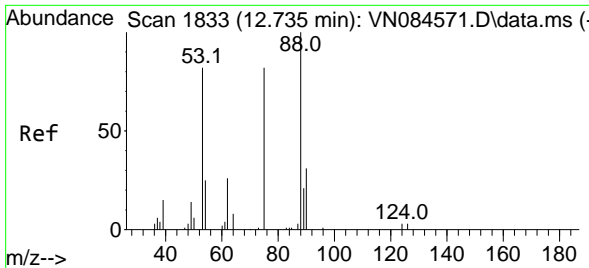
Tgt Ion: 91 Resp: 4065  
 Ion Ratio Lower Upper  
 91 100  
 126 0.0 15.7 47.1#



#80  
 1,3,5-Trimethylbenzene  
 Concen: 2.138 ug/l  
 RT: 13.170 min Scan# 1907  
 Delta R.T. -0.000 min  
 Lab File: VN084952.D  
 Acq: 19 Nov 2024 17:16

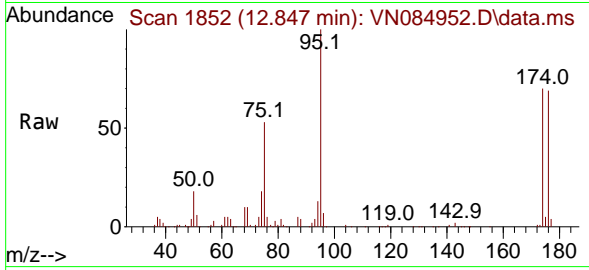
Tgt Ion: 105 Resp: 16882  
 Ion Ratio Lower Upper  
 105 100  
 120 50.2 23.7 71.1



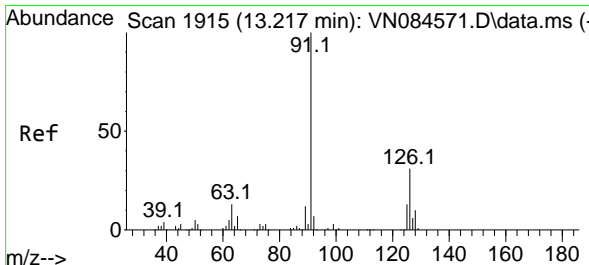
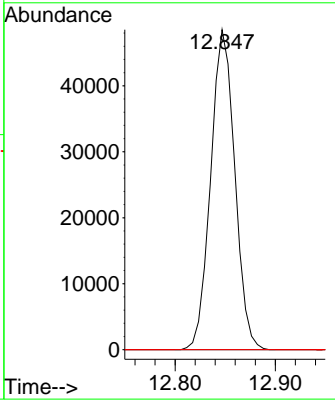
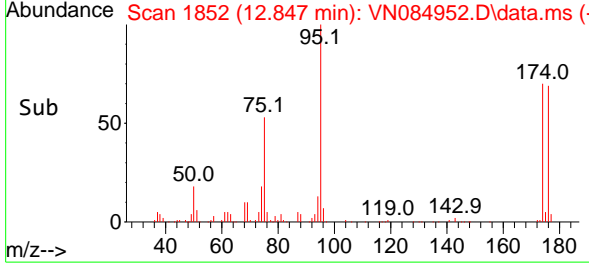


#81  
 trans-1,4-Dichloro-2-butene  
 Concen: 70.773 ug/l  
 RT: 12.847 min Scan# 11  
 Delta R.T. 0.112 min  
 Lab File: VN084952.D  
 Acq: 19 Nov 2024 17:16

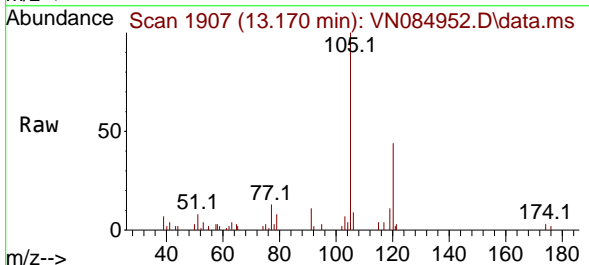
Instrument : MSVOA\_N  
 ClientSampleId :



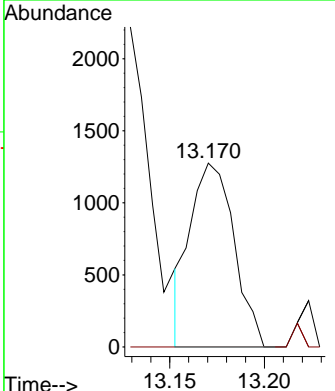
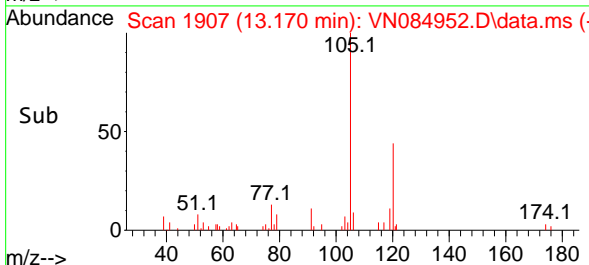
Tgt Ion: 75 Resp: 81052  
 Ion Ratio Lower Upper  
 75 100  
 53 0.0 78.0 117.0#  
 89 0.0 35.5 53.3#

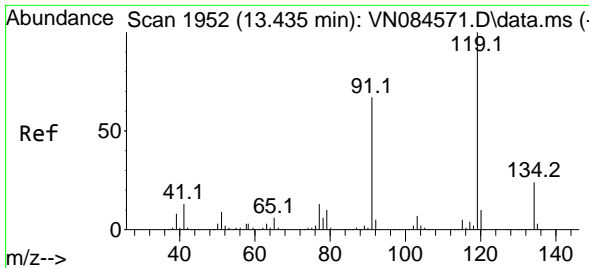


#82  
 4-Chlorotoluene  
 Concen: 0.267 ug/l  
 RT: 13.170 min Scan# 1907  
 Delta R.T. -0.047 min  
 Lab File: VN084952.D  
 Acq: 19 Nov 2024 17:16



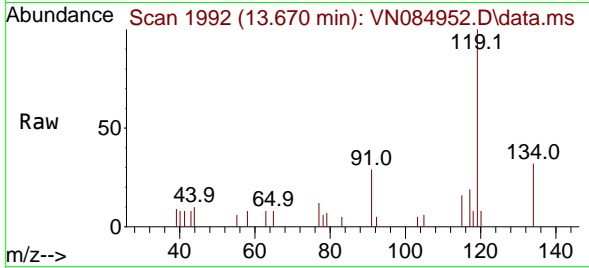
Tgt Ion: 91 Resp: 2047  
 Ion Ratio Lower Upper  
 91 100  
 126 0.0 15.7 47.1#



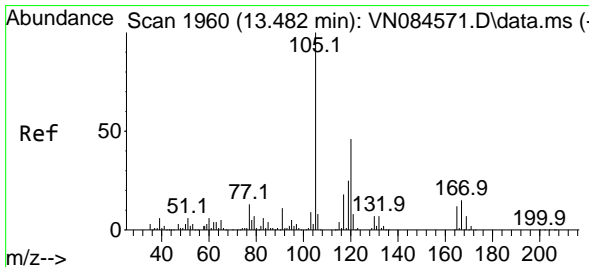
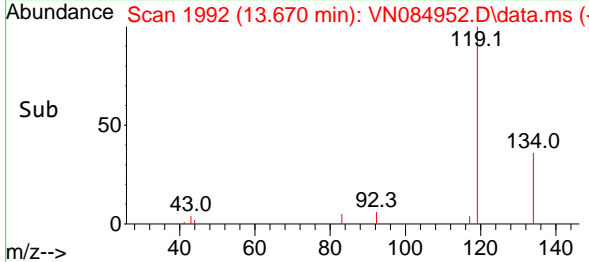
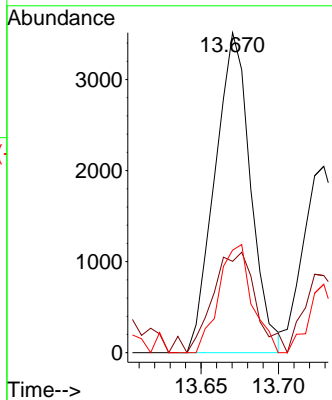


#83  
 tert-Butylbenzene  
 Concen: 0.862 ug/l  
 RT: 13.670 min Scan# 1952  
 Delta R.T. 0.235 min  
 Lab File: VN084952.D  
 Acq: 19 Nov 2024 17:16

Instrument : MSVOA\_N  
 ClientSampleId :

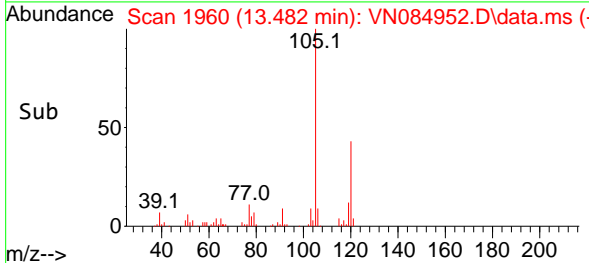
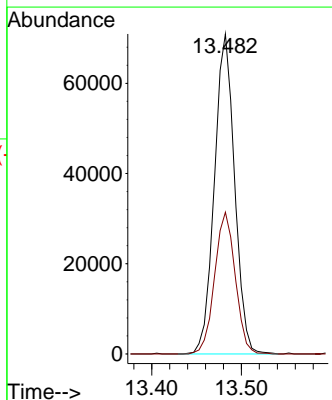
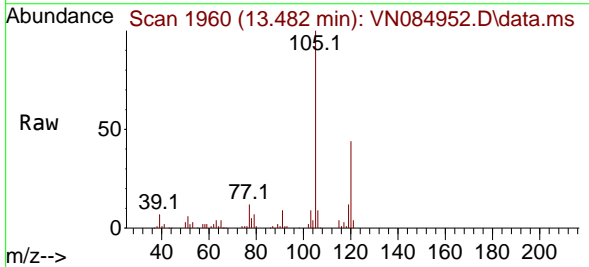


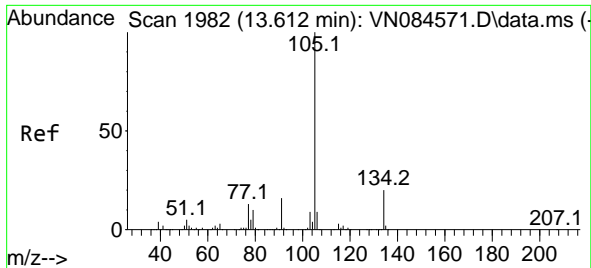
Tgt Ion:119 Resp: 5629  
 Ion Ratio Lower Upper  
 119 100  
 91 37.3 34.1 102.3  
 134 31.6 12.8 38.4



#84  
 1,2,4-Trimethylbenzene  
 Concen: 13.614 ug/l  
 RT: 13.482 min Scan# 1960  
 Delta R.T. 0.000 min  
 Lab File: VN084952.D  
 Acq: 19 Nov 2024 17:16

Tgt Ion:105 Resp: 110924  
 Ion Ratio Lower Upper  
 105 100  
 120 45.2 22.3 66.8

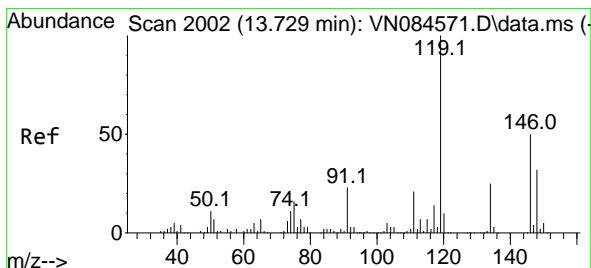
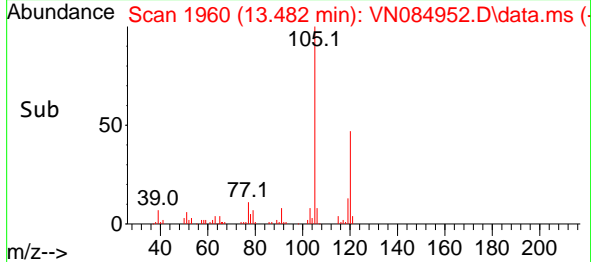
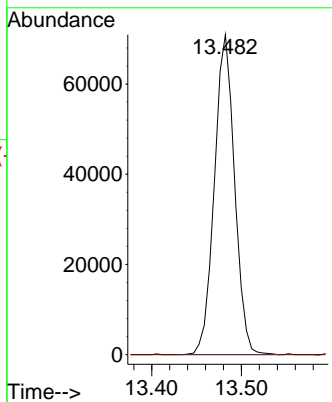
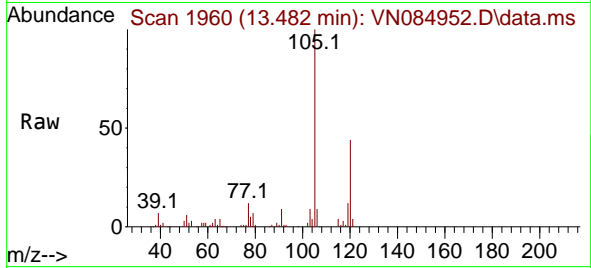




#85  
 sec-Butylbenzene  
 Concen: 12.019 ug/l  
 RT: 13.482 min Scan# 1982  
 Delta R.T. -0.135 min  
 Lab File: VN084952.D  
 Acq: 19 Nov 2024 17:16

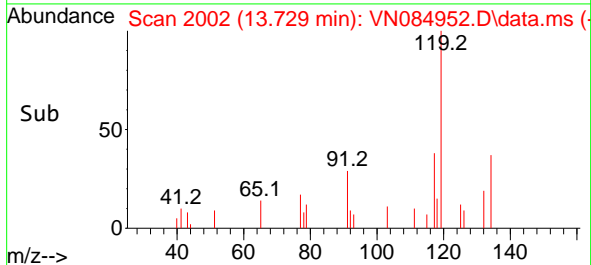
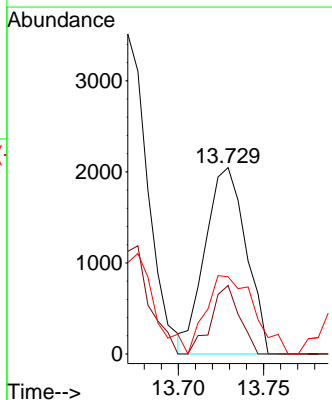
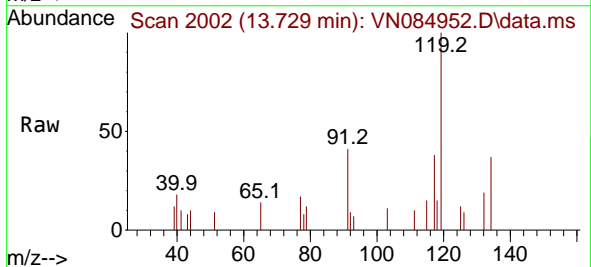
Instrument : MSVOA\_N  
 ClientSampleId :

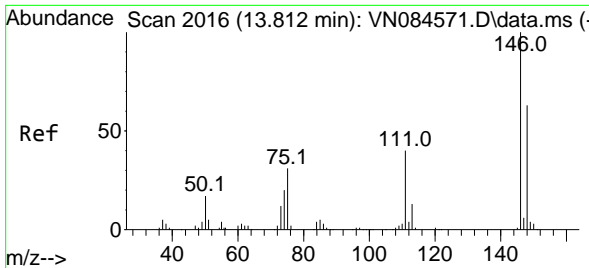
Tgt Ion:105 Resp: 110924  
 Ion Ratio Lower Upper  
 105 100  
 134 0.0 9.8 29.4#



#86  
 p-Isopropyltoluene  
 Concen: 0.453 ug/l  
 RT: 13.729 min Scan# 2002  
 Delta R.T. 0.000 min  
 Lab File: VN084952.D  
 Acq: 19 Nov 2024 17:16

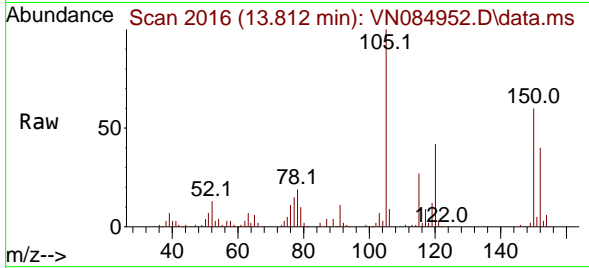
Tgt Ion:119 Resp: 3428  
 Ion Ratio Lower Upper  
 119 100  
 134 25.5 12.6 37.8  
 91 0.0 12.4 37.2#



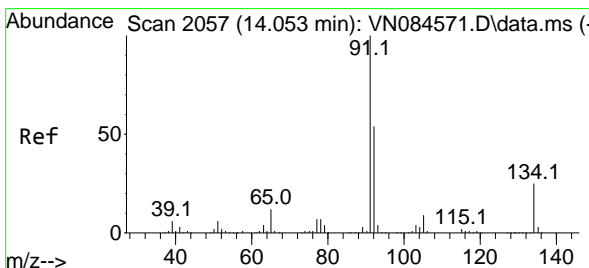
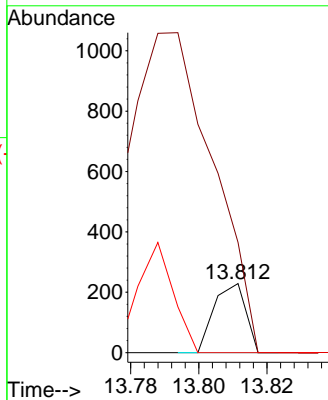
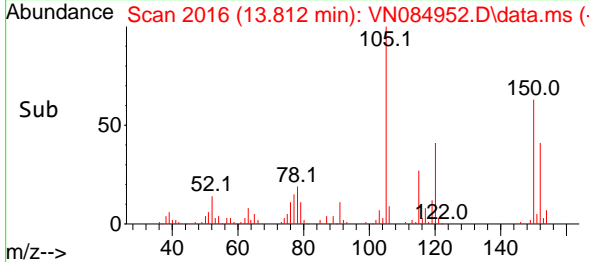


#88  
 1,4-Dichlorobenzene  
 Concen: Below Cal  
 RT: 13.812 min Scan# 2016  
 Delta R.T. -0.000 min  
 Lab File: VN084952.D  
 Acq: 19 Nov 2024 17:16

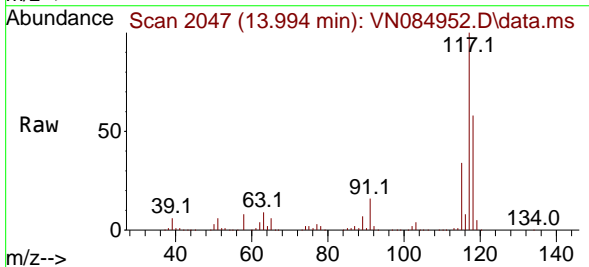
Instrument : MSVOA\_N  
 ClientSampleId :



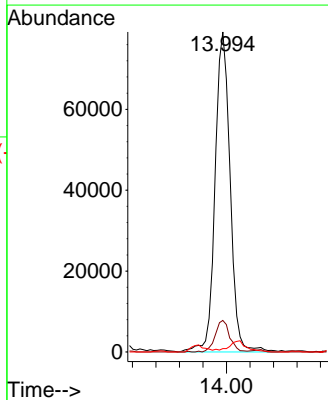
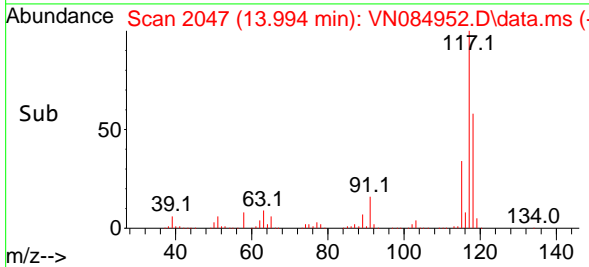
Tgt Ion:146 Resp: 148  
 Ion Ratio Lower Upper  
 146 100  
 111 0.0 21.2 63.6#  
 148 0.0 31.9 95.9#

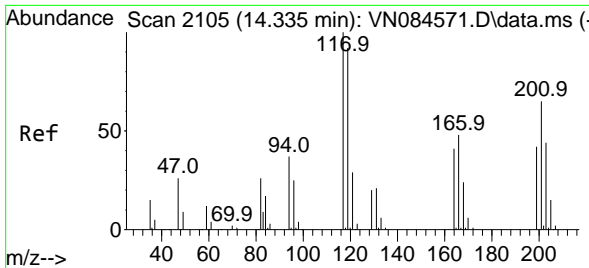


#89  
 n-Butylbenzene  
 Concen: 19.895 ug/l  
 RT: 13.994 min Scan# 2047  
 Delta R.T. -0.059 min  
 Lab File: VN084952.D  
 Acq: 19 Nov 2024 17:16



Tgt Ion: 91 Resp: 140863  
 Ion Ratio Lower Upper  
 91 100  
 92 9.5 26.6 79.7#  
 134 0.0 12.3 36.9#

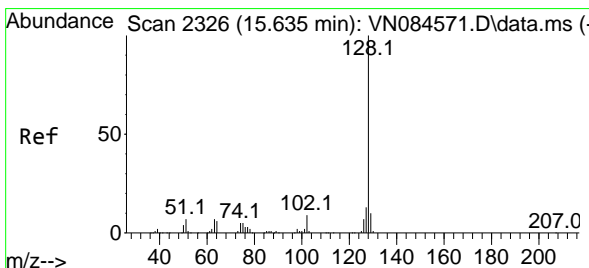
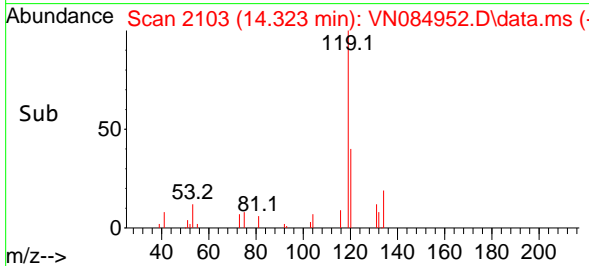
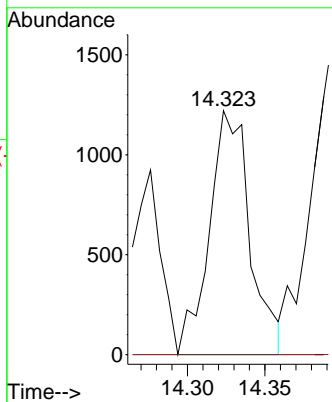
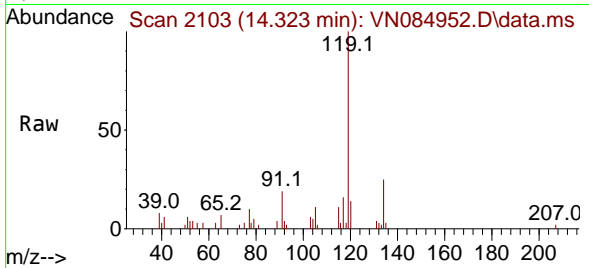




#90  
 Hexachloroethane  
 Concen: 1.316 ug/l  
 RT: 14.323 min Scan# 2105  
 Delta R.T. -0.006 min  
 Lab File: VN084952.D  
 Acq: 19 Nov 2024 17:16

Instrument : MSVOA\_N  
 ClientSampleId :

Tgt Ion:117 Resp: 2222  
 Ion Ratio Lower Upper  
 117 100  
 201 0.0 34.4 103.2#



#95  
 Naphthalene  
 Concen: 167.933 ug/l  
 RT: 15.641 min Scan# 2327  
 Delta R.T. 0.006 min  
 Lab File: VN084952.D  
 Acq: 19 Nov 2024 17:16

Tgt Ion:128 Resp: 1321146  
 Ion Ratio Lower Upper  
 128 100  
 127 12.8 10.5 15.7  
 129 11.0 8.7 13.1

