

Data Path : Z:\voasrv\HPCHEM1\MSVOA\_N\Data\VN112023\  
 Data File : VN080207.D  
 Acq On : 20 Nov 2023 15:00  
 Operator : JC\MD  
 Sample : PB157250ZHE#01  
 Misc : 5.0mL/MSVOA\_N/WATER  
 ALS Vial : 12 Sample Multiplier: 1

Instrument :  
 MSVOA\_N  
 ClientSampleId :  
 PB157250ZHE#01

Manual Integrations  
 APPROVED

Reviewed By :John Carlone 11/21/2023  
 Supervised By :Mahesh Dadoda 11/21/2023

Quant Time: Nov 21 01:05:32 2023  
 Quant Method : Z:\voasrv\HPCHEM1\MSVOA\_N\methods\82N111623W.M  
 Quant Title : SW846 8260  
 QLast Update : Fri Nov 17 01:19:32 2023  
 Response via : Initial Calibration

Compound	R.T.	QIon	Response	Conc	Units	Dev(Min)
-----						
Internal Standards						
1) Pentafluorobenzene	8.230	168	147917	50.000	ug/l	0.00
34) 1,4-Difluorobenzene	9.106	114	271875	50.000	ug/l	0.00
63) Chlorobenzene-d5	11.865	117	306792	50.000	ug/l	0.00
72) 1,4-Dichlorobenzene-d4	13.794	152	134796	50.000	ug/l	0.00
System Monitoring Compounds						
33) 1,2-Dichloroethane-d4	8.577	65	138622	56.758	ug/l	0.00
Spiked Amount	50.000	Range	74 - 125	Recovery	=	113.520%
35) Dibromofluoromethane	8.171	113	107143	53.409	ug/l	0.00
Spiked Amount	50.000	Range	75 - 124	Recovery	=	106.820%
50) Toluene-d8	10.571	98	374319	51.762	ug/l	0.00
Spiked Amount	50.000	Range	86 - 113	Recovery	=	103.520%
62) 4-Bromofluorobenzene	12.847	95	151505	55.467	ug/l	0.00
Spiked Amount	50.000	Range	83 - 123	Recovery	=	110.940%
Target Compounds						
					Qvalue	
16) Acetone	4.442	43	12534	15.279	ug/l	95
20) Methylene Chloride	5.271	84	14191m	8.261	ug/l	
43) Isopropyl Acetate	8.688	43	97775	24.940	ug/l #	86
-----						

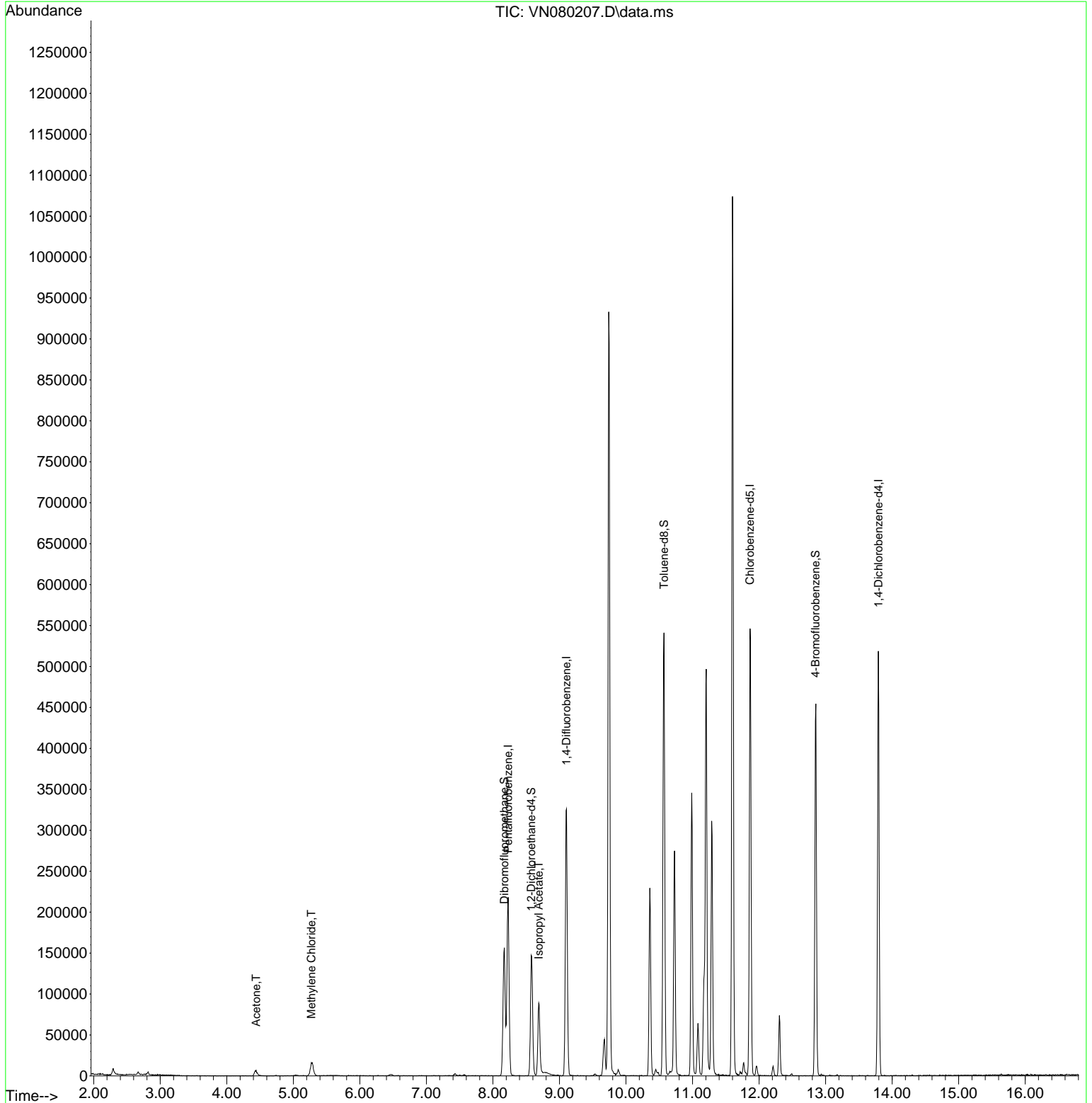
(#) = qualifier out of range (m) = manual integration (+) = signals summed

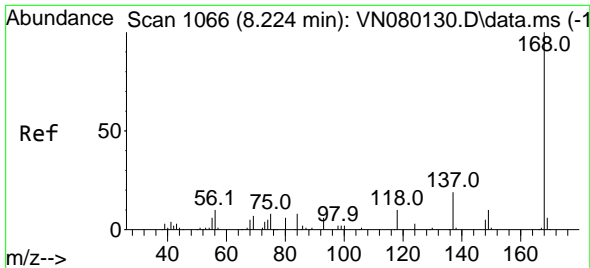
Data Path : Z:\voasrv\HPCHEM1\MSVOA\_N\Data\VN112023\  
 Data File : VN080207.D  
 Acq On : 20 Nov 2023 15:00  
 Operator : JC\MD  
 Sample : PB157250ZHE#01  
 Misc : 5.0mL/MSVOA\_N/WATER  
 ALS Vial : 12 Sample Multiplier: 1

**Instrument :**  
 MSVOA\_N  
**ClientSampleId :**  
 PB157250ZHE#01

Quant Time: Nov 21 01:05:32 2023  
 Quant Method : Z:\voasrv\HPCHEM1\MSVOA\_N\methods\82N111623W.M  
 Quant Title : SW846 8260  
 QLast Update : Fri Nov 17 01:19:32 2023  
 Response via : Initial Calibration

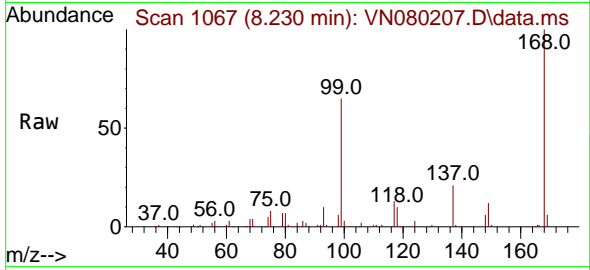
**Manual Integrations**  
**APPROVED**  
 Reviewed By :John Carlone 11/21/2023  
 Supervised By :Mahesh Dadoda 11/21/2023





#1  
 Pentafluorobenzene  
 Concen: 50.000 ug/l  
 RT: 8.230 min Scan# 1066  
 Delta R.T. 0.006 min  
 Lab File: VN080207.D  
 Acq: 20 Nov 2023 15:00

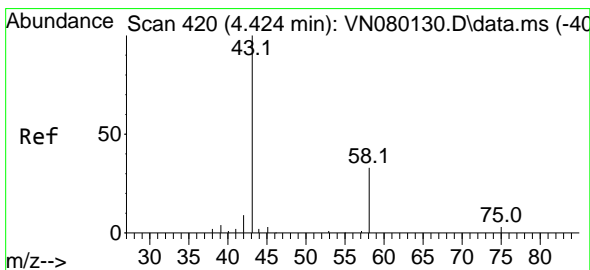
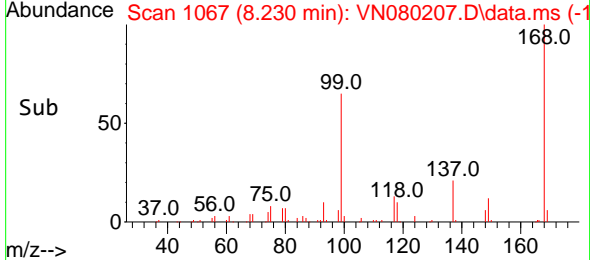
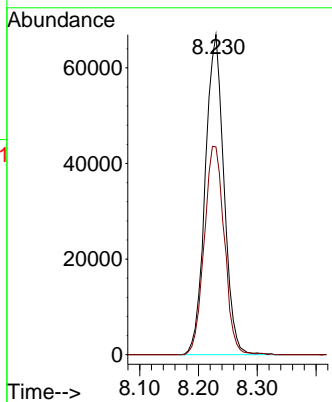
Instrument : MSVOA\_N  
 Client Sample Id : PB157250ZHE#01



Tgt Ion: 168 Resp: 14791  
 Ion Ratio Lower Upper  
 168 100  
 99 65.0 53.0 79.6

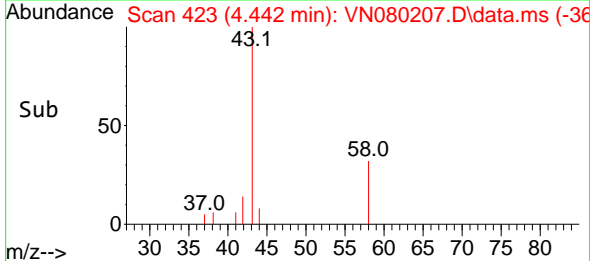
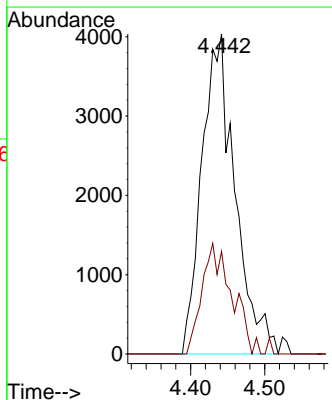
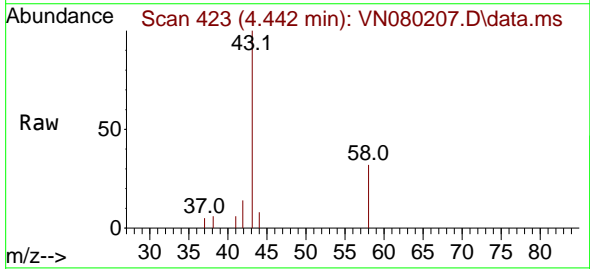
Manual Integrations  
 APPROVED

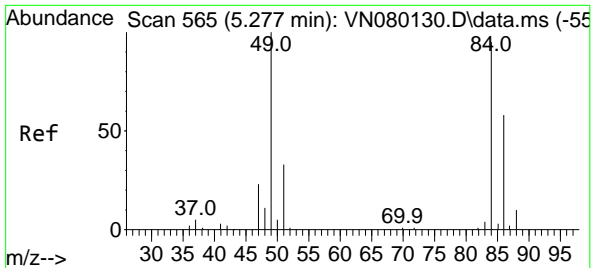
Reviewed By : John Carlone 11/21/2023  
 Supervised By : Mahesh Dadoda 11/21/2023



#16  
 Acetone  
 Concen: 15.279 ug/l  
 RT: 4.442 min Scan# 423  
 Delta R.T. 0.018 min  
 Lab File: VN080207.D  
 Acq: 20 Nov 2023 15:00

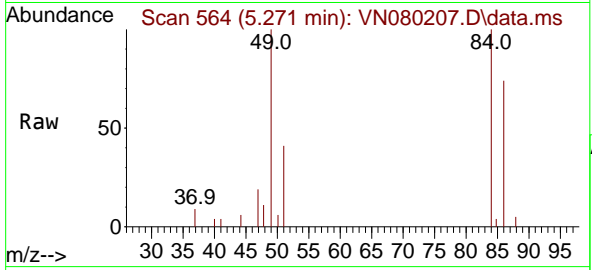
Tgt Ion: 43 Resp: 12534  
 Ion Ratio Lower Upper  
 43 100  
 58 32.0 28.0 42.0





#20  
 Methylene Chloride  
 Concen: 8.261 ug/l m  
 RT: 5.271 min Scan# 50  
 Delta R.T. -0.006 min  
 Lab File: VN080207.D  
 Acq: 20 Nov 2023 15:00

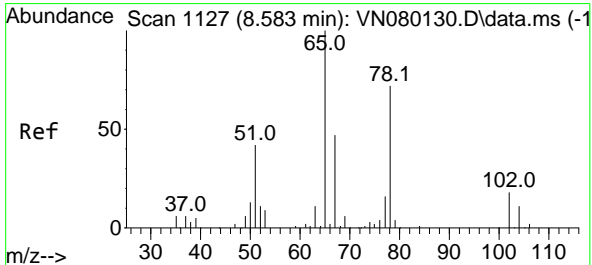
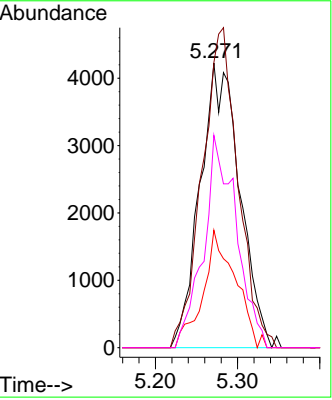
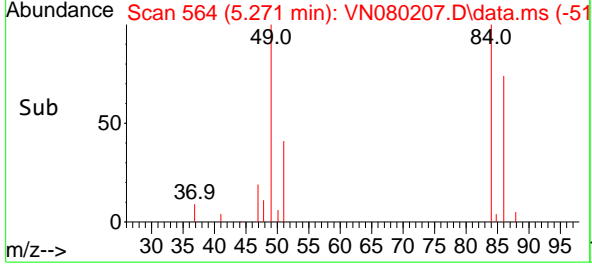
Instrument : MSVOA\_N  
 Client Sample Id : PB157250ZHE#01



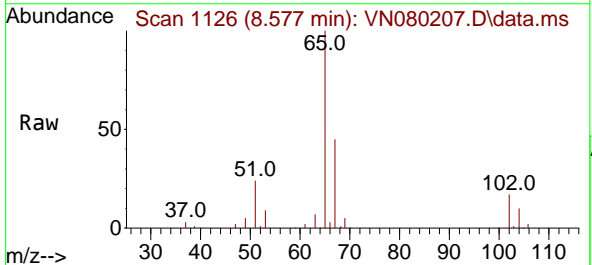
Tgt Ion: 84 Resp: 1419

Ion	Ratio	Lower	Upper
84	100		
49	100.2	79.7	119.5
51	41.3	25.2	37.8
86	74.6	53.3	79.9

Manual Integrations  
**APPROVED**  
 Reviewed By :John Carlone 11/21/2023  
 Supervised By :Mahesh Dadoda 11/21/2023

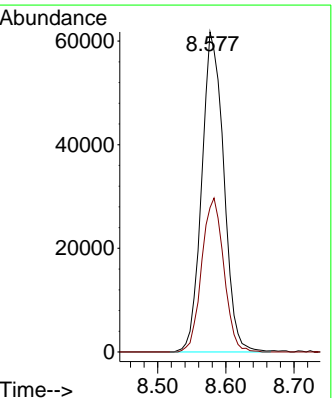
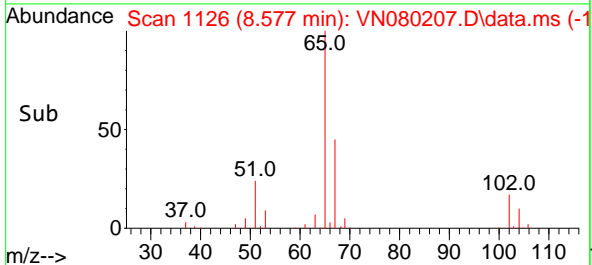


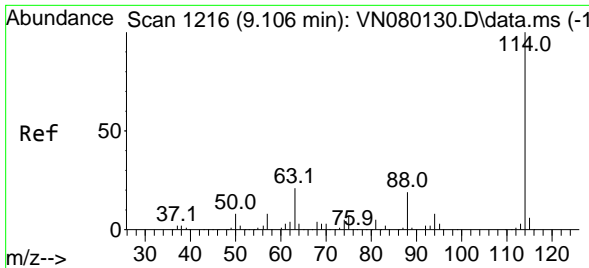
#33  
 1,2-Dichloroethane-d4  
 Concen: 56.758 ug/l  
 RT: 8.577 min Scan# 1126  
 Delta R.T. -0.006 min  
 Lab File: VN080207.D  
 Acq: 20 Nov 2023 15:00



Tgt Ion: 65 Resp: 138622

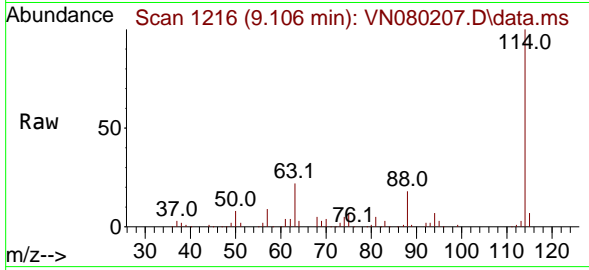
Ion	Ratio	Lower	Upper
65	100		
67	48.4	0.0	106.6





#34  
 1,4-Difluorobenzene  
 Concen: 50.000 ug/l  
 RT: 9.106 min Scan# 111  
 Delta R.T. -0.000 min  
 Lab File: VN080207.D  
 Acq: 20 Nov 2023 15:00

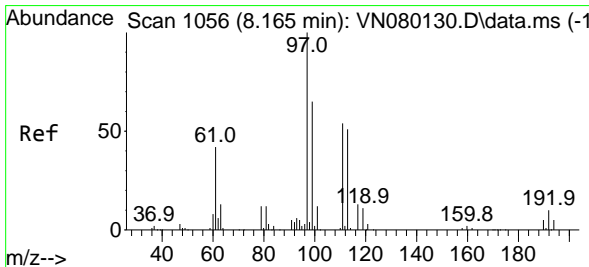
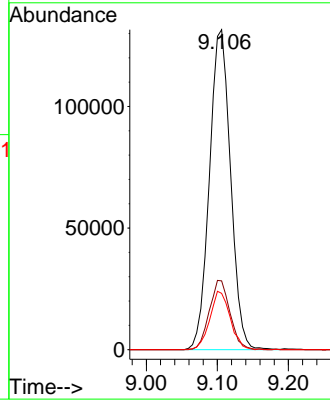
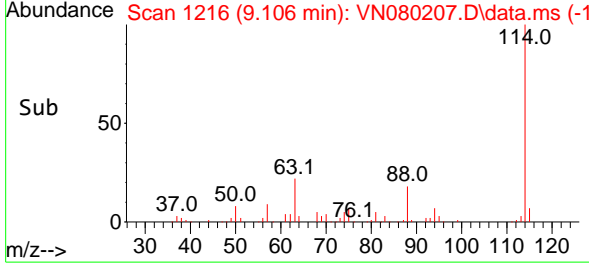
Instrument : MSVOA\_N  
 ClientSampleId : PB157250ZHE#01



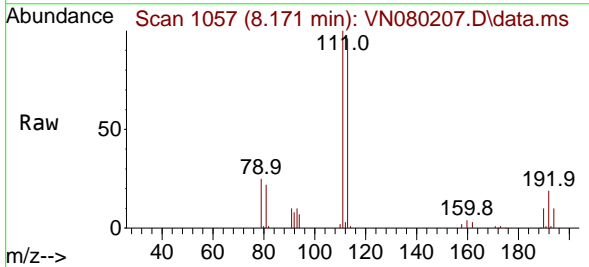
Tgt Ion:114 Resp: 27187  
 Ion Ratio Lower Upper  
 114 100  
 63 21.5 0.0 36.4  
 88 17.6 0.0 30.6

Manual Integrations  
**APPROVED**

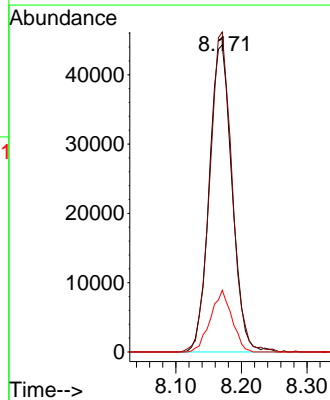
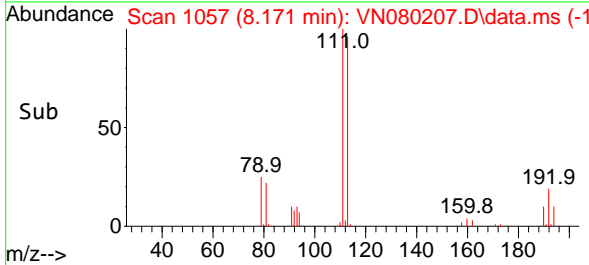
Reviewed By :John Carlone 11/21/2023  
 Supervised By :Mahesh Dadoda 11/21/2023

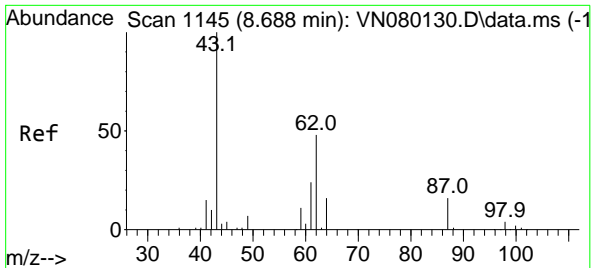


#35  
 Dibromofluoromethane  
 Concen: 53.409 ug/l  
 RT: 8.171 min Scan# 1057  
 Delta R.T. 0.006 min  
 Lab File: VN080207.D  
 Acq: 20 Nov 2023 15:00



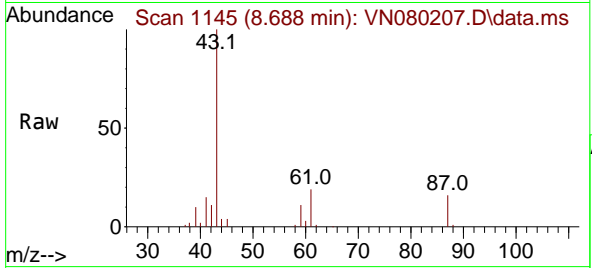
Tgt Ion:113 Resp: 107143  
 Ion Ratio Lower Upper  
 113 100  
 111 101.2 82.6 123.8  
 192 18.8 12.7 19.1





#43  
 Isopropyl Acetate  
 Concen: 24.940 ug/l  
 RT: 8.688 min Scan# 1145  
 Delta R.T. -0.000 min  
 Lab File: VN080207.D  
 Acq: 20 Nov 2023 15:00

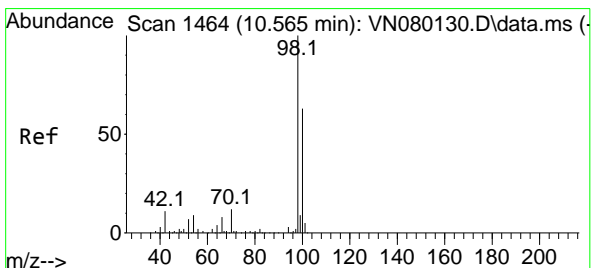
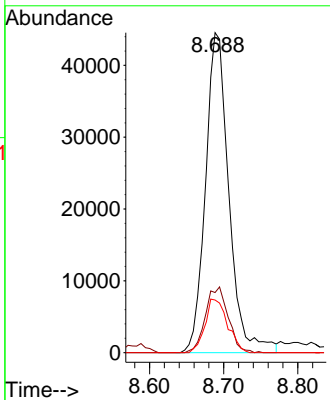
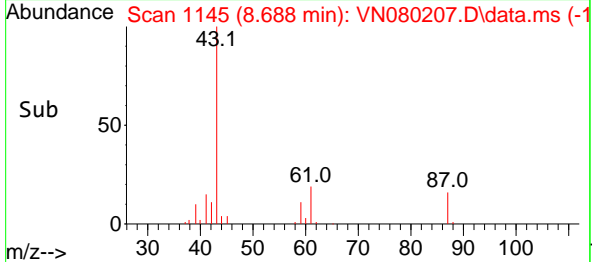
Instrument : MSVOA\_N  
 ClientSampleId : PB157250ZHE#01



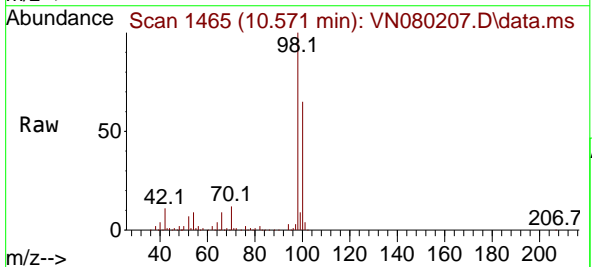
Tgt Ion: 43 Resp: 97779  
 Ion Ratio Lower Upper  
 43 100  
 61 20.0 24.7 37.1  
 87 16.1 14.6 21.8

Manual Integrations  
 APPROVED

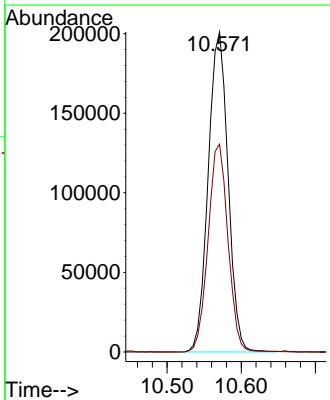
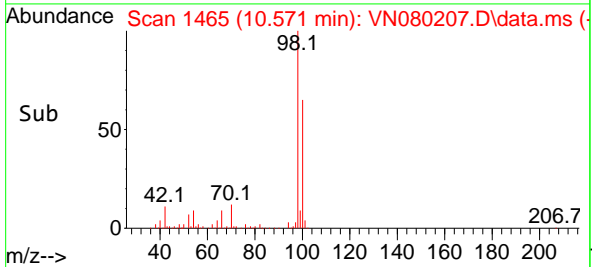
Reviewed By :John Carlone 11/21/2023  
 Supervised By :Mahesh Dadoda 11/21/2023

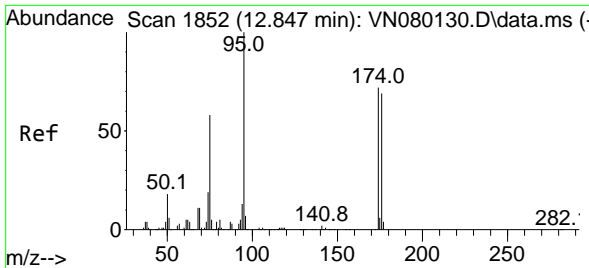


#50  
 Toluene-d8  
 Concen: 51.762 ug/l  
 RT: 10.571 min Scan# 1465  
 Delta R.T. 0.006 min  
 Lab File: VN080207.D  
 Acq: 20 Nov 2023 15:00



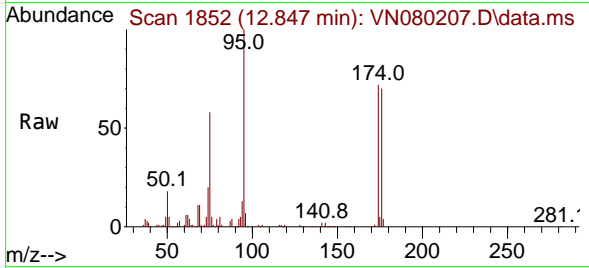
Tgt Ion: 98 Resp: 374319  
 Ion Ratio Lower Upper  
 98 100  
 100 64.9 52.0 78.0





#62  
 4-Bromofluorobenzene  
 Concen: 55.467 ug/l  
 RT: 12.847 min Scan# 1852  
 Delta R.T. -0.000 min  
 Lab File: VN080207.D  
 Acq: 20 Nov 2023 15:00

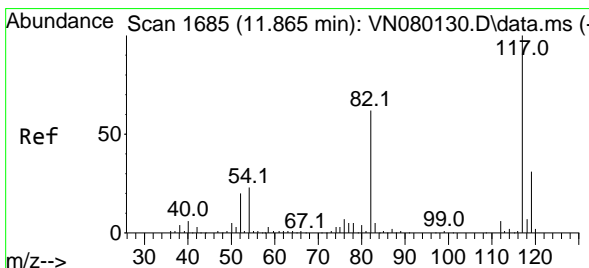
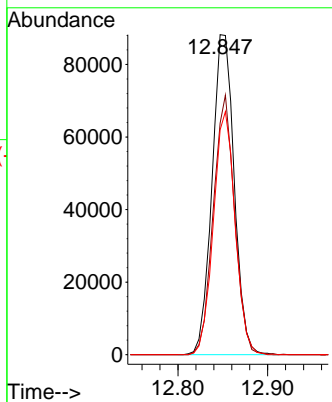
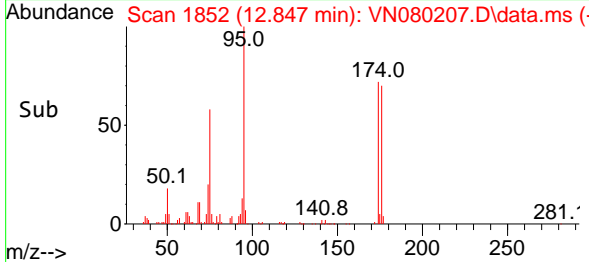
Instrument : MSVOA\_N  
 ClientSampleId : PB157250ZHE#01



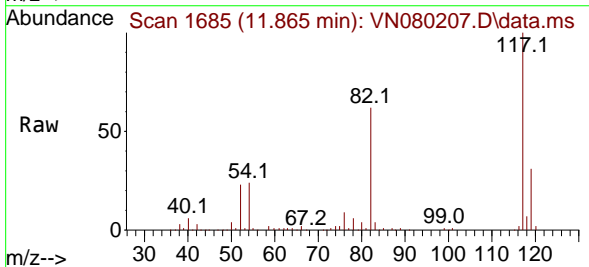
Tgt Ion: 95 Resp: 151500  
 Ion Ratio Lower Upper  
 95 100  
 174 77.8 0.0 143.8  
 176 74.4 0.0 135.8

Manual Integrations  
 APPROVED

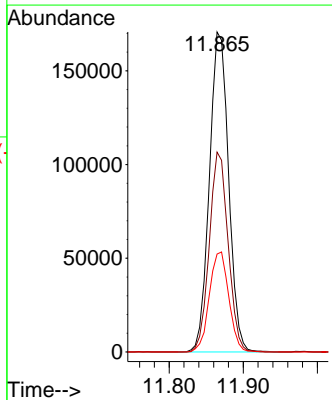
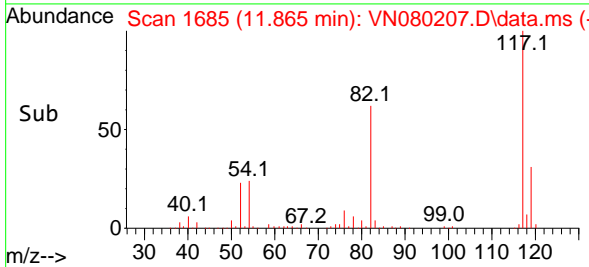
Reviewed By :John Carlone 11/21/2023  
 Supervised By :Mahesh Dadoda 11/21/2023

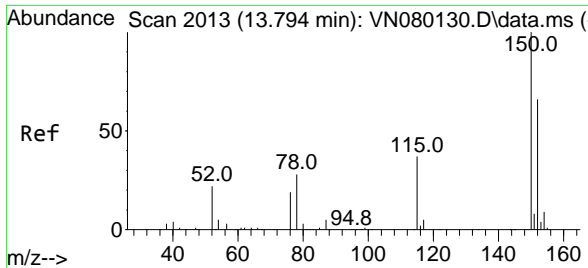


#63  
 Chlorobenzene-d5  
 Concen: 50.000 ug/l  
 RT: 11.865 min Scan# 1685  
 Delta R.T. -0.000 min  
 Lab File: VN080207.D  
 Acq: 20 Nov 2023 15:00



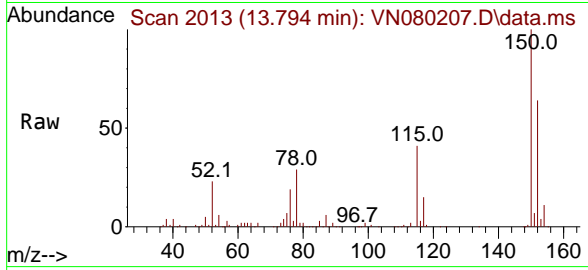
Tgt Ion:117 Resp: 306792  
 Ion Ratio Lower Upper  
 117 100  
 82 62.5 44.0 66.0  
 119 30.6 25.6 38.4





#72  
 1,4-Dichlorobenzene-d4  
 Concen: 50.000 ug/l  
 RT: 13.794 min Scan# 20  
 Delta R.T. -0.000 min  
 Lab File: VN080207.D  
 Acq: 20 Nov 2023 15:00

Instrument : MSVOA\_N  
 Client SampleID : PB157250ZHE#01



Tgt Ion:152 Resp: 134790  
 Ion Ratio Lower Upper  
 152 100  
 115 64.6 32.3 96.8  
 150 156.8 0.0 355.8

Manual Integrations  
**APPROVED**  
 Reviewed By :John Carlone 11/21/2023  
 Supervised By :Mahesh Dadoda 11/21/2023

