

Data Path : Z:\voasrv\HPCHEM1\MSVOA\_N\Data\VN112024\  
 Data File : VN084967.D  
 Acq On : 20 Nov 2024 14:33  
 Operator : JC\MD  
 Sample : PB165122TB  
 Misc : 5.0mL/MSVOA\_N/WATER  
 ALS Vial : 10 Sample Multiplier: 1

Instrument :  
 MSVOA\_N  
 ClientSampleId :  
 PB165122TB

Quant Time: Nov 21 00:38:25 2024  
 Quant Method : Z:\voasrv\HPCHEM1\MSVOA\_N\methods\82N103024W.M  
 Quant Title : SW846 8260  
 QLast Update : Thu Oct 31 18:45:38 2024  
 Response via : Initial Calibration

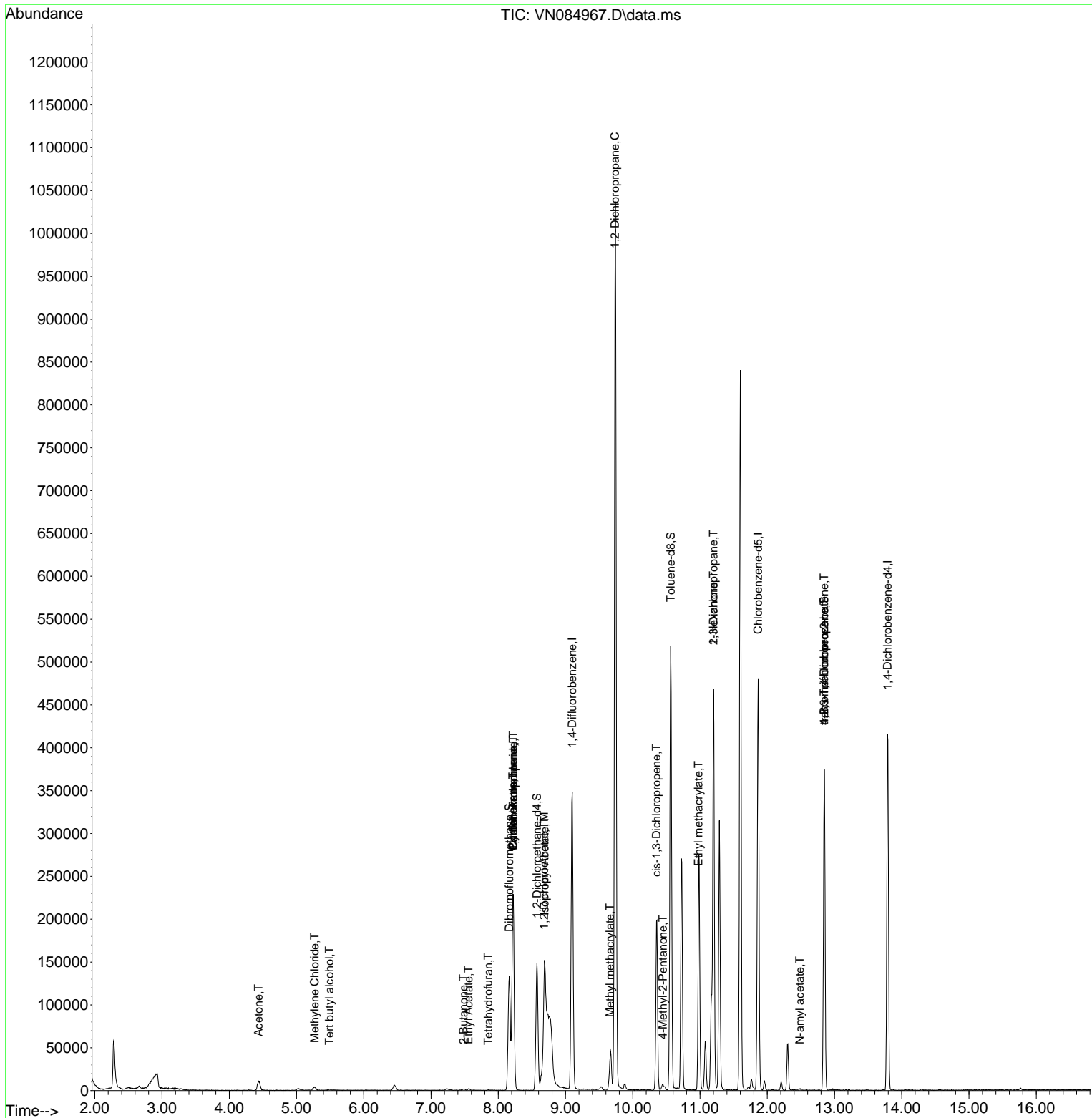
Compound	R.T.	QIon	Response	Conc	Units	Dev(Min)
-----						
Internal Standards						
1) Pentafluorobenzene	8.224	168	165076	50.000	ug/l	0.00
34) 1,4-Difluorobenzene	9.100	114	299710	50.000	ug/l	0.00
63) Chlorobenzene-d5	11.865	117	271233	50.000	ug/l	0.00
72) 1,4-Dichlorobenzene-d4	13.788	152	111994	50.000	ug/l	0.00
System Monitoring Compounds						
33) 1,2-Dichloroethane-d4	8.577	65	122130	51.224	ug/l	0.00
Spiked Amount	50.000	Range 74 - 125	Recovery	=	102.440%	
35) Dibromofluoromethane	8.165	113	96695	47.664	ug/l	0.00
Spiked Amount	50.000	Range 75 - 124	Recovery	=	95.320%	
50) Toluene-d8	10.565	98	354600	47.451	ug/l	0.00
Spiked Amount	50.000	Range 86 - 113	Recovery	=	94.900%	
62) 4-Bromofluorobenzene	12.847	95	133518	47.806	ug/l	0.00
Spiked Amount	50.000	Range 77 - 121	Recovery	=	95.620%	
Target Compounds						
						Qvalue
3) Chloromethane	2.359	50	540	Below Cal	#	76
6) Chloroethane	3.118	64	155	Below Cal	#	45
11) Tert butyl alcohol	5.489	59	908	2.885	ug/l #	73
16) Acetone	4.436	43	19968	26.442	ug/l #	86
18) Methyl Acetate	5.036	43	3942	Below Cal	#	83
20) Methylene Chloride	5.271	84	2825	1.347	ug/l #	63
25) 2-Butanone	7.483	43	2579	2.319	ug/l #	87
29) Tetrahydrofuran	7.853	42	535	0.725	ug/l #	61
31) Cyclohexane	8.218	56	3614	1.098	ug/l #	1
36) 1,1-Dichloropropene	8.224	75	14162	5.034	ug/l #	50
37) Ethyl Acetate	7.559	43	3002	1.176	ug/l #	81
38) Carbon Tetrachloride	8.224	117	18188	5.784	ug/l #	18
42) 1,2-Dichloroethane	8.682	62	1089	0.372	ug/l #	75
43) Isopropyl Acetate	8.688	43	242604	51.472	ug/l #	73
45) 1,2-Dichloropropane	9.735	63	1153	0.544	ug/l #	44
48) Methyl methacrylate	9.659	41	3024	1.522	ug/l #	44
51) 4-Methyl-2-Pentanone	10.447	43	4172	1.714	ug/l	100
54) cis-1,3-Dichloropropene	10.353	75	36809	10.657	ug/l #	62
56) Ethyl methacrylate	10.976	69	1292	0.449	ug/l #	1
57) 1,3-Dichloropropane	11.200	76	4637	1.357	ug/l #	42
59) 2-Hexanone	11.200	43	55450	31.305	ug/l #	56
74) N-amyl acetate	12.482	43	786	0.235	ug/l #	42
76) 1,2,3-Trichloropropane	12.847	75	69240	30.929	ug/l #	1
81) trans-1,4-Dichloro-2-b...	12.847	75	69240	73.375	ug/l #	11
88) 1,4-Dichlorobenzene	13.817	146	704	Below Cal	#	24

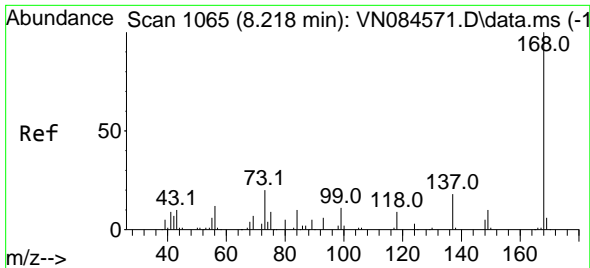
(#) = qualifier out of range (m) = manual integration (+) = signals summed

Data Path : Z:\voasrv\HPCHEM1\MSVOA\_N\Data\VN112024\  
 Data File : VN084967.D  
 Acq On : 20 Nov 2024 14:33  
 Operator : JC\MD  
 Sample : PB165122TB  
 Misc : 5.0mL/MSVOA\_N/WATER  
 ALS Vial : 10 Sample Multiplier: 1

**Instrument :**  
 MSVOA\_N  
**ClientSampleId :**  
 PB165122TB

Quant Time: Nov 21 00:38:25 2024  
 Quant Method : Z:\voasrv\HPCHEM1\MSVOA\_N\methods\82N103024W.M  
 Quant Title : SW846 8260  
 QLast Update : Thu Oct 31 18:45:38 2024  
 Response via : Initial Calibration

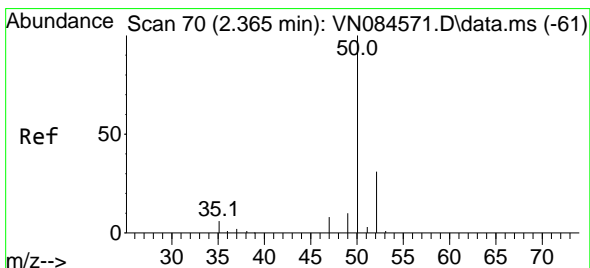
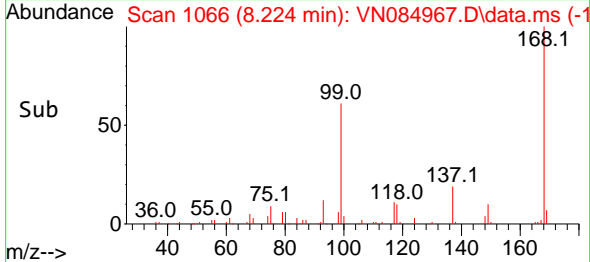
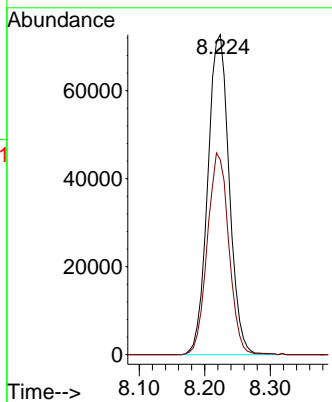
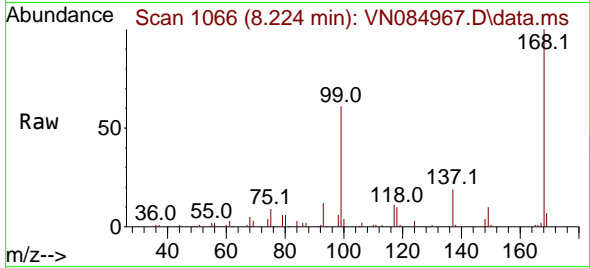




#1  
 Pentafluorobenzene  
 Concen: 50.000 ug/l  
 RT: 8.224 min Scan# 10  
 Delta R.T. -0.000 min  
 Lab File: VN084967.D  
 Acq: 20 Nov 2024 14:33

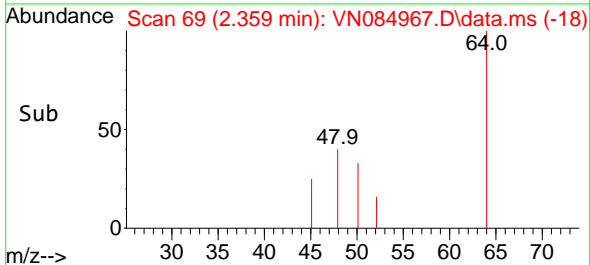
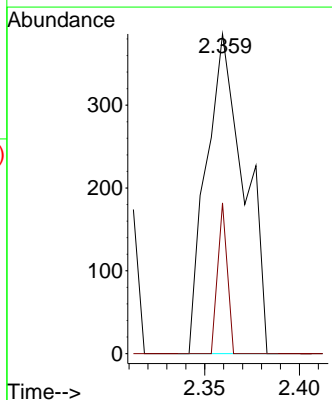
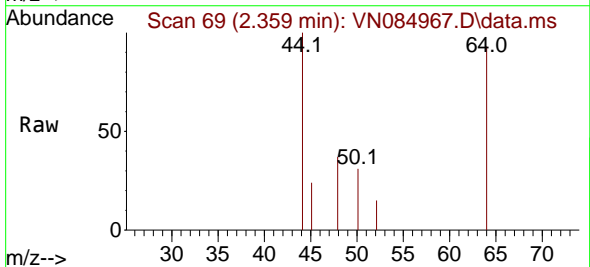
Instrument :  
 MSVOA\_N  
 ClientSampleId :  
 PB165122TB

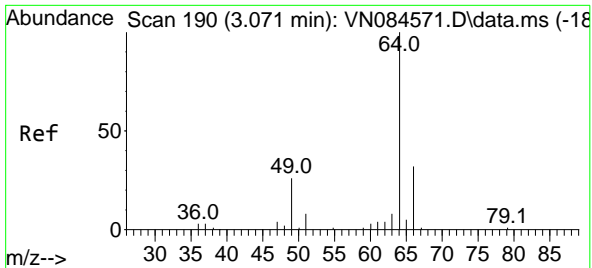
Tgt Ion:168 Resp: 165076  
 Ion Ratio Lower Upper  
 168 100  
 99 60.9 54.2 81.2



#3  
 Chloromethane  
 Concen: Below Cal  
 RT: 2.359 min Scan# 69  
 Delta R.T. 0.000 min  
 Lab File: VN084967.D  
 Acq: 20 Nov 2024 14:33

Tgt Ion: 50 Resp: 540  
 Ion Ratio Lower Upper  
 50 100  
 52 47.2 26.8 40.2#

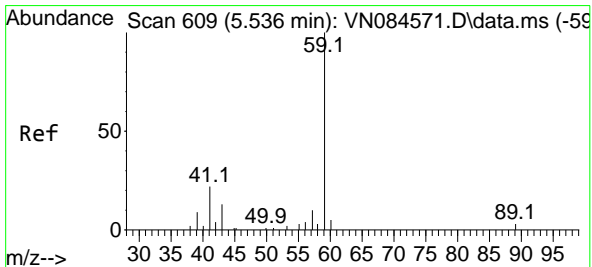
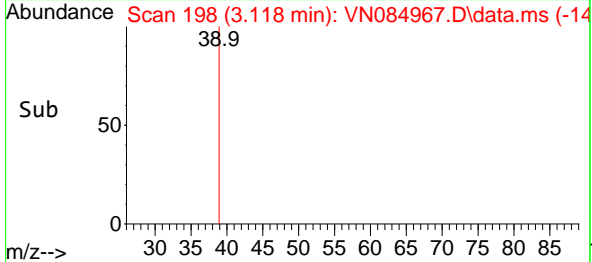
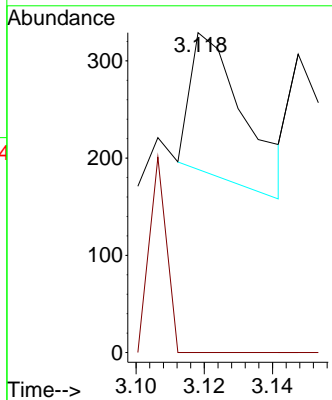
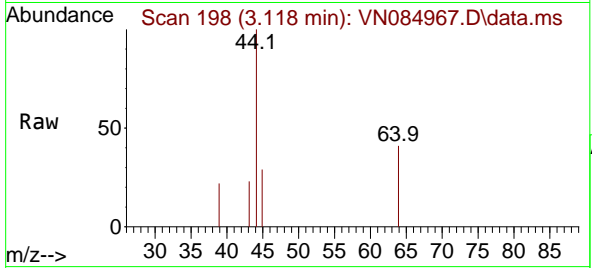




#6  
 Chloroethane  
 Concen: Below Cal  
 RT: 3.118 min Scan# 190  
 Delta R.T. 0.000 min  
 Lab File: VN084967.D  
 Acq: 20 Nov 2024 14:33

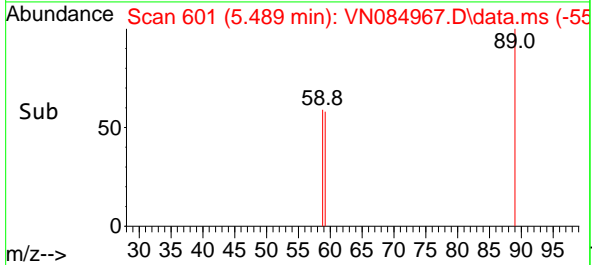
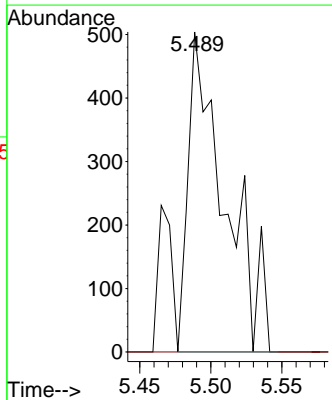
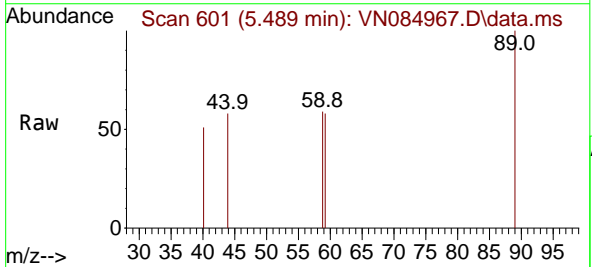
Instrument : MSVOA\_N  
 Client Sample Id : PB165122TB

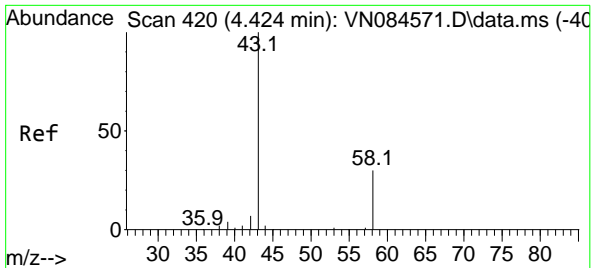
Tgt Ion: 64 Resp: 155  
 Ion Ratio Lower Upper  
 64 100  
 66 0.0 23.5 35.3#



#11  
 Tert butyl alcohol  
 Concen: 2.885 ug/l  
 RT: 5.489 min Scan# 601  
 Delta R.T. -0.035 min  
 Lab File: VN084967.D  
 Acq: 20 Nov 2024 14:33

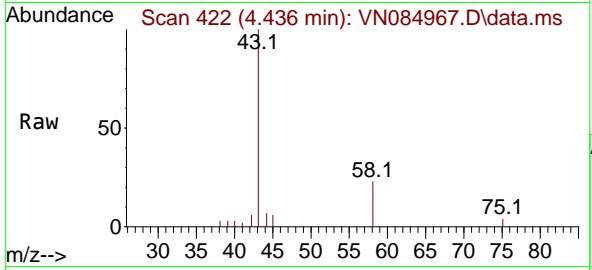
Tgt Ion: 59 Resp: 908  
 Ion Ratio Lower Upper  
 59 100  
 57 0.0 8.2 12.2#



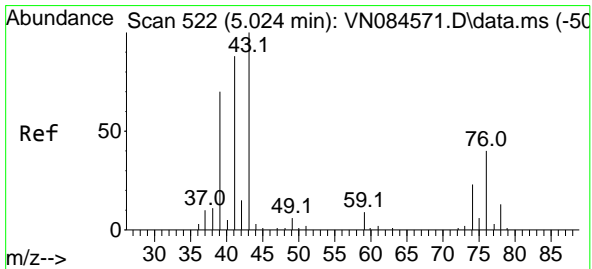
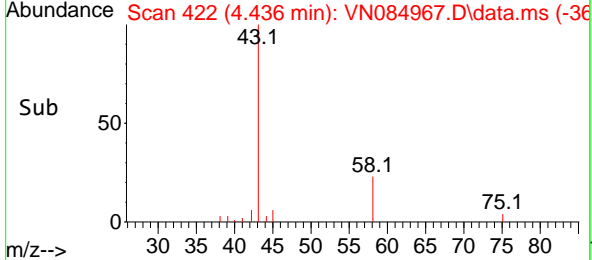
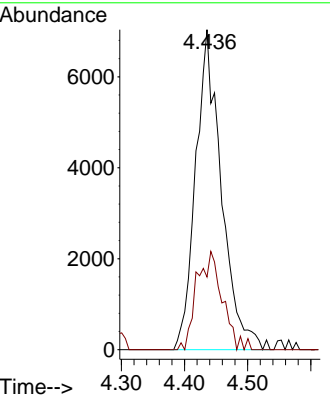


#16  
 Acetone  
 Concen: 26.442 ug/l  
 RT: 4.436 min Scan# 41  
 Delta R.T. 0.012 min  
 Lab File: VN084967.D  
 Acq: 20 Nov 2024 14:33

Instrument : MSVOA\_N  
 ClientSampleId : PB165122TB

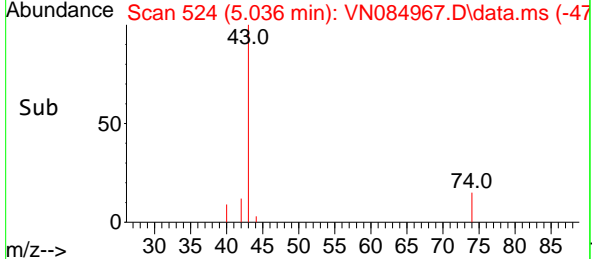
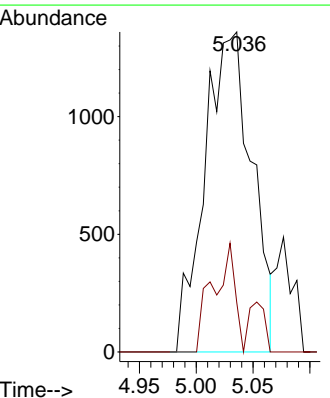
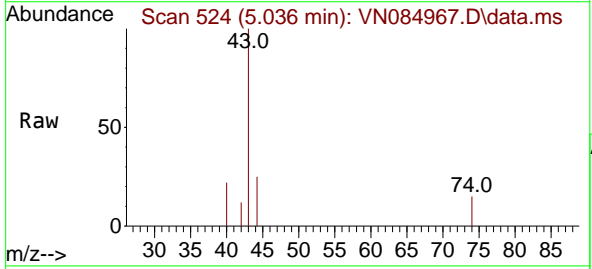


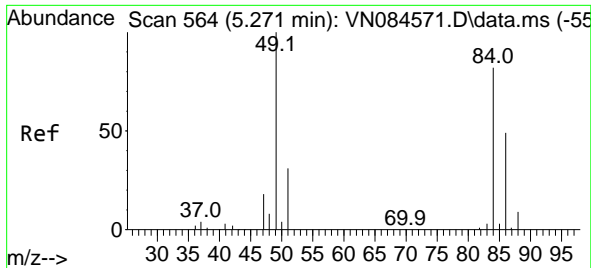
Tgt Ion: 43 Resp: 19968  
 Ion Ratio Lower Upper  
 43 100  
 58 22.7 24.4 36.6#



#18  
 Methyl Acetate  
 Concen: Below Cal  
 RT: 5.036 min Scan# 524  
 Delta R.T. 0.018 min  
 Lab File: VN084967.D  
 Acq: 20 Nov 2024 14:33

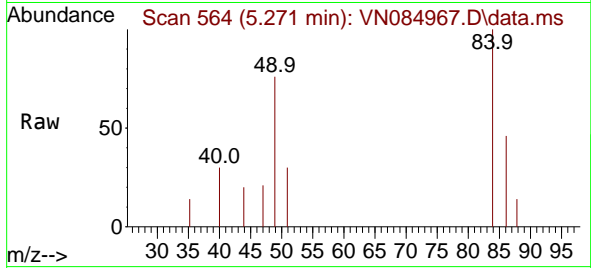
Tgt Ion: 43 Resp: 3942  
 Ion Ratio Lower Upper  
 43 100  
 74 15.8 19.2 28.8#





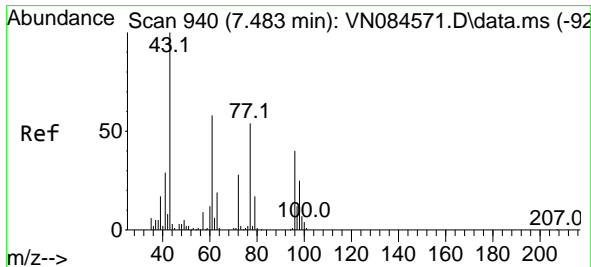
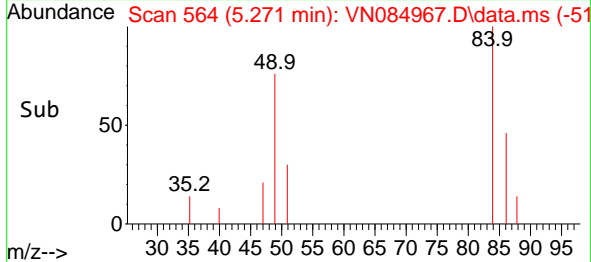
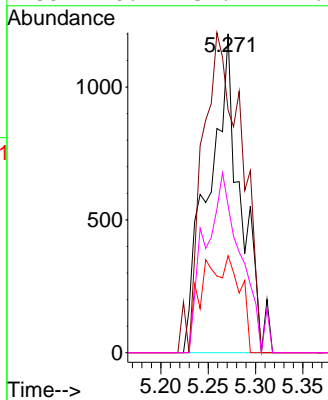
#20  
 Methylene Chloride  
 Concen: 1.347 ug/l  
 RT: 5.271 min Scan# 50  
 Delta R.T. -0.006 min  
 Lab File: VN084967.D  
 Acq: 20 Nov 2024 14:33

Instrument : MSVOA\_N  
 ClientSampleId : PB165122TB



Tgt Ion: 84 Resp: 2825

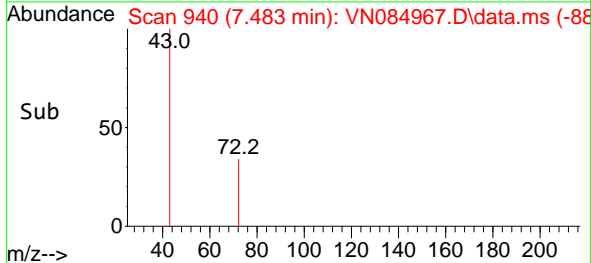
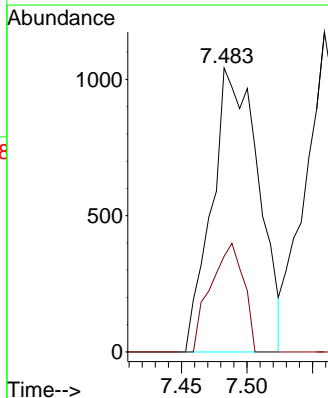
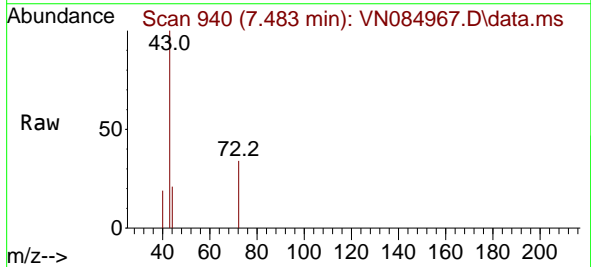
Ion	Ratio	Lower	Upper
84	100		
49	76.0	107.2	160.8#
51	30.4	31.8	47.8#
86	46.1	52.9	79.3#

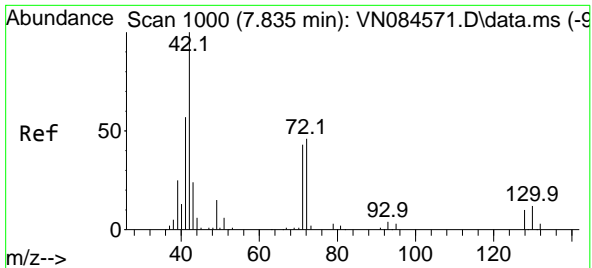


#25  
 2-Butanone  
 Concen: 2.319 ug/l  
 RT: 7.483 min Scan# 940  
 Delta R.T. -0.000 min  
 Lab File: VN084967.D  
 Acq: 20 Nov 2024 14:33

Tgt Ion: 43 Resp: 2579

Ion	Ratio	Lower	Upper
43	100		
72	33.7	21.4	32.2#



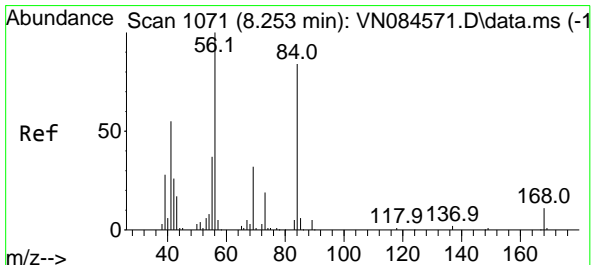
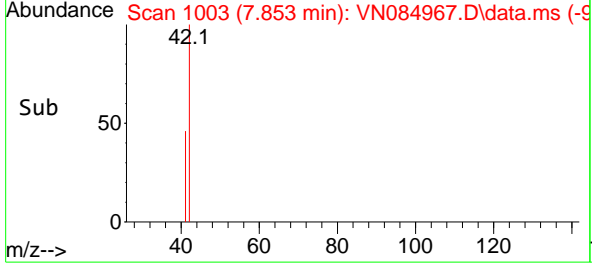
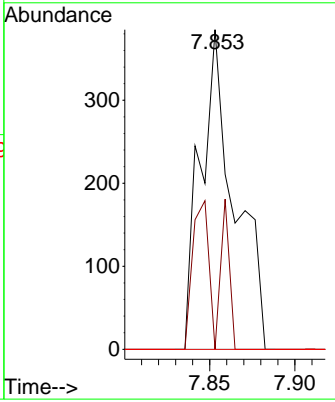
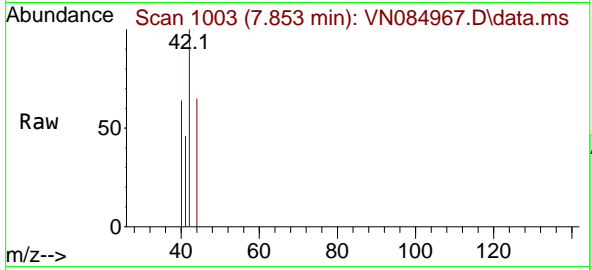


#29  
 Tetrahydrofuran  
 Concen: 0.725 ug/l  
 RT: 7.853 min Scan# 1065  
 Delta R.T. 0.018 min  
 Lab File: VN084967.D  
 Acq: 20 Nov 2024 14:33

Instrument : MSVOA\_N  
 ClientSampleId : PB165122TB

Tgt Ion: 42 Resp: 535

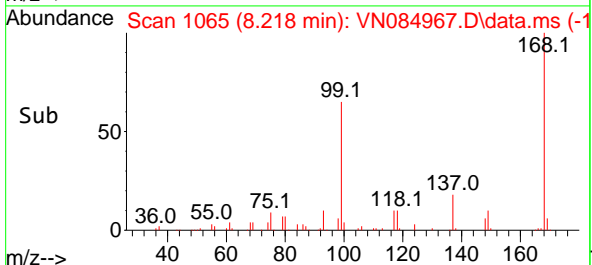
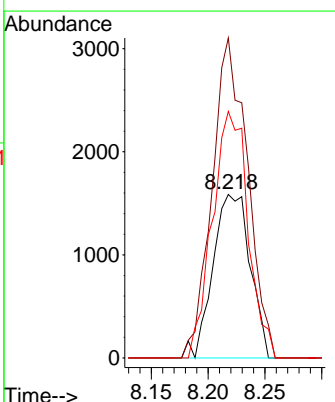
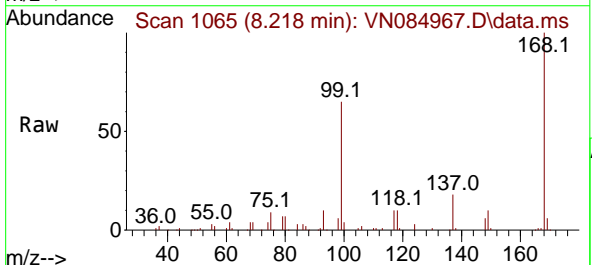
Ion	Ratio	Lower	Upper
42	100		
72	34.0	34.6	51.8#
71	0.0	32.2	48.4#

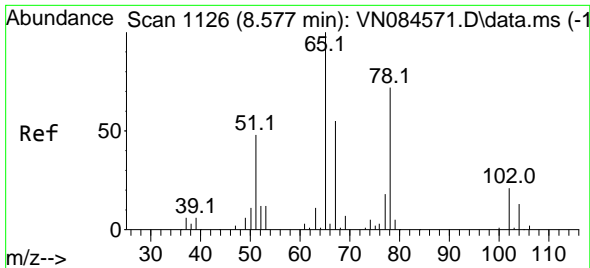


#31  
 Cyclohexane  
 Concen: 1.098 ug/l  
 RT: 8.218 min Scan# 1065  
 Delta R.T. -0.035 min  
 Lab File: VN084967.D  
 Acq: 20 Nov 2024 14:33

Tgt Ion: 56 Resp: 3614

Ion	Ratio	Lower	Upper
56	100		
69	195.6	23.8	35.6#
84	150.7	68.8	103.2#

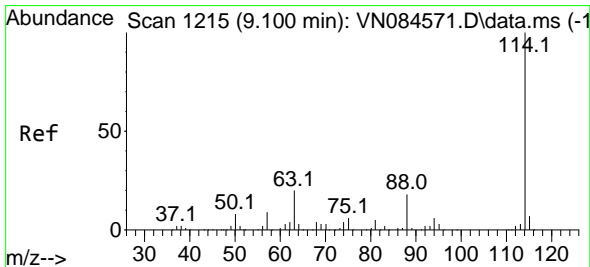
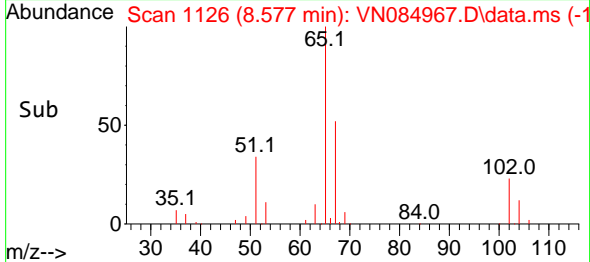
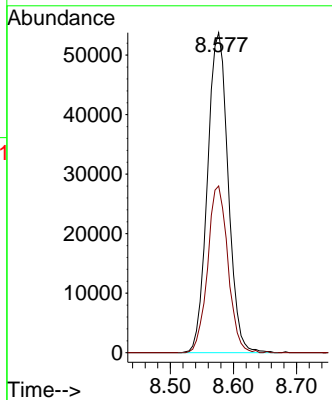
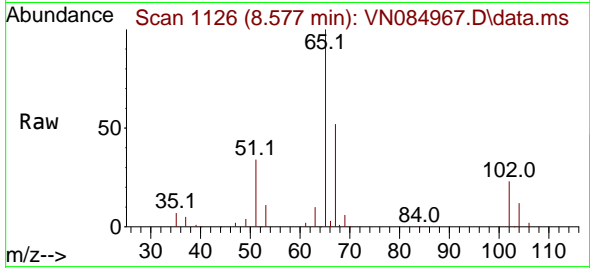




#33  
 1,2-Dichloroethane-d4  
 Concen: 51.224 ug/l  
 RT: 8.577 min Scan# 1126  
 Delta R.T. -0.000 min  
 Lab File: VN084967.D  
 Acq: 20 Nov 2024 14:33

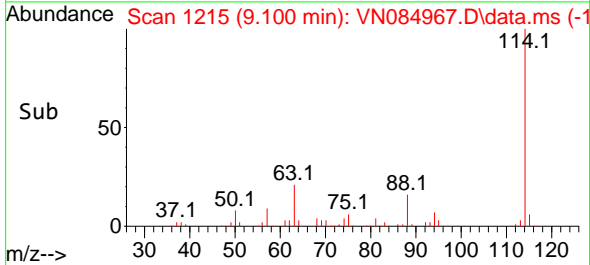
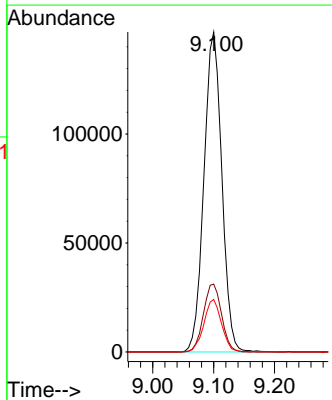
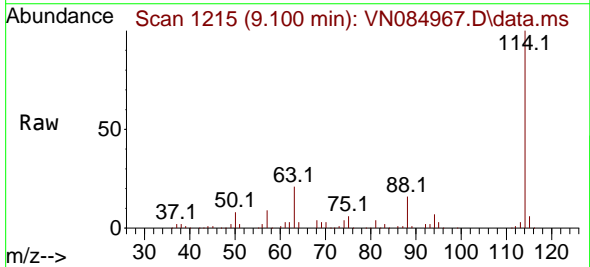
Instrument : MSVOA\_N  
 ClientSampleId : PB165122TB

Tgt Ion: 65 Resp: 122130  
 Ion Ratio Lower Upper  
 65 100  
 67 51.1 0.0 102.0

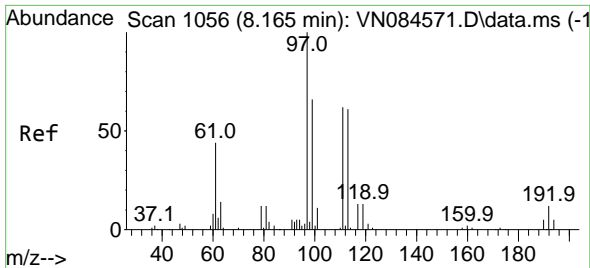


#34  
 1,4-Difluorobenzene  
 Concen: 50.000 ug/l  
 RT: 9.100 min Scan# 1215  
 Delta R.T. 0.000 min  
 Lab File: VN084967.D  
 Acq: 20 Nov 2024 14:33

Tgt Ion:114 Resp: 299710  
 Ion Ratio Lower Upper  
 114 100  
 63 21.2 0.0 43.8  
 88 16.4 0.0 31.6



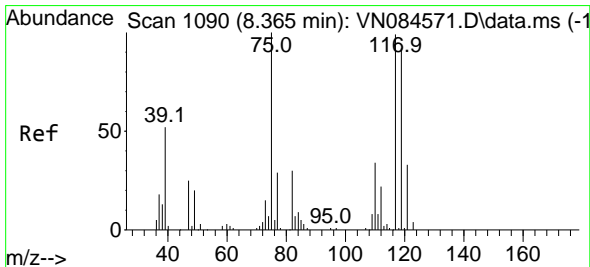
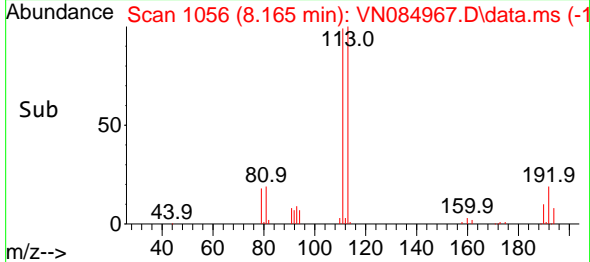
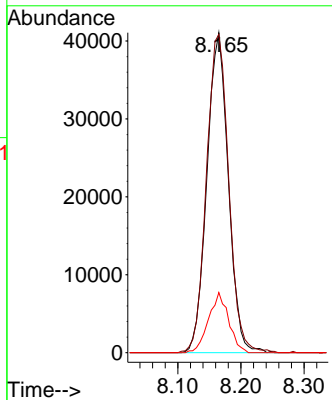
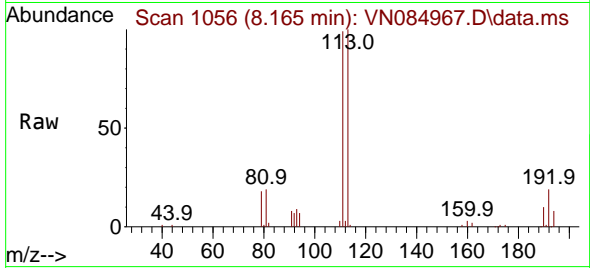




#35  
 Dibromofluoromethane  
 Concen: 47.664 ug/l  
 RT: 8.165 min Scan# 1066  
 Delta R.T. -0.000 min  
 Lab File: VN084967.D  
 Acq: 20 Nov 2024 14:33

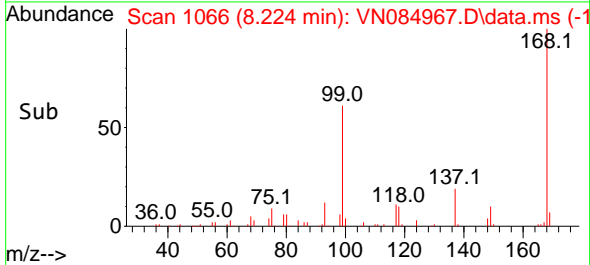
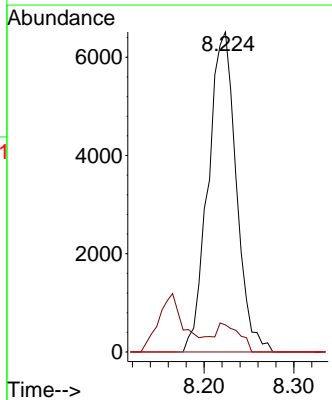
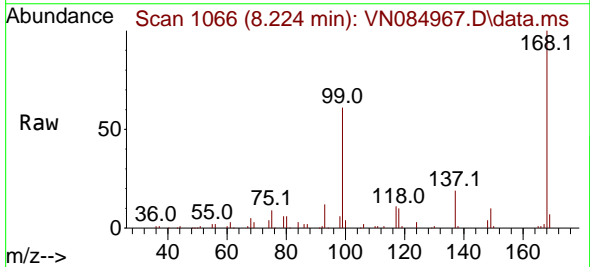
Instrument : MSVOA\_N  
 ClientSampleId : PB165122TB

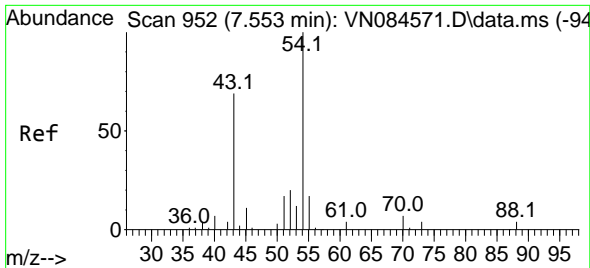
Tgt Ion	Resp	Lower	Upper
113	96695		
113	100		
111	103.4	83.3	124.9
192	17.6	13.5	20.3



#36  
 1,1-Dichloropropene  
 Concen: 5.034 ug/l  
 RT: 8.224 min Scan# 1066  
 Delta R.T. -0.147 min  
 Lab File: VN084967.D  
 Acq: 20 Nov 2024 14:33

Tgt Ion	Resp	Lower	Upper
75	14162		
75	100		
110	8.2	16.9	50.7#
77	0.0	24.7	37.1#



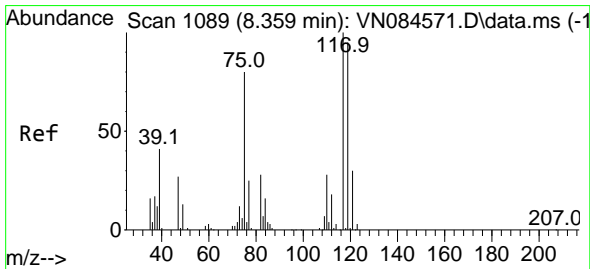
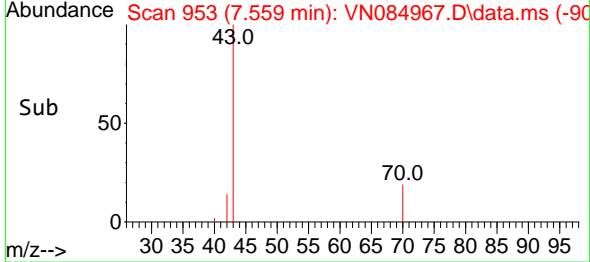
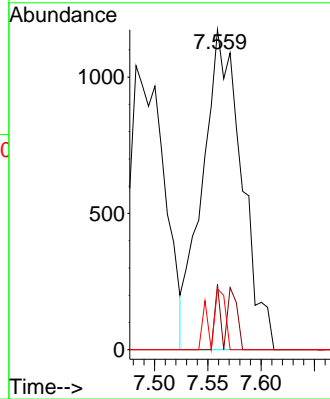
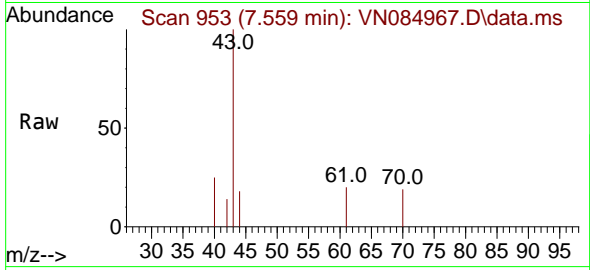


#37  
 Ethyl Acetate  
 Concen: 1.176 ug/l  
 RT: 7.559 min Scan# 91  
 Delta R.T. -0.000 min  
 Lab File: VN084967.D  
 Acq: 20 Nov 2024 14:33

Instrument : MSVOA\_N  
 ClientSampleId : PB165122TB

Tgt Ion: 43 Resp: 3002

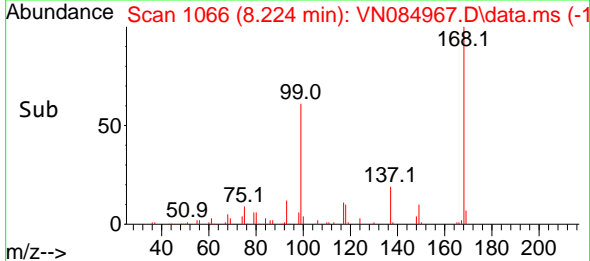
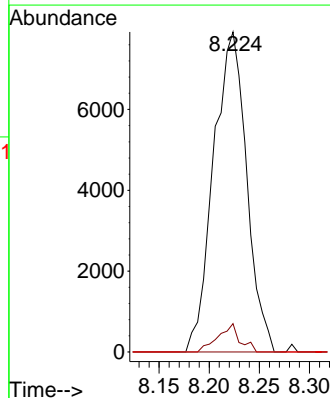
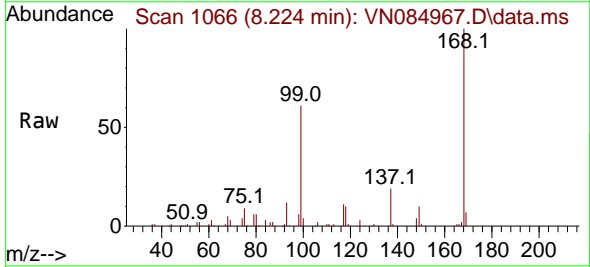
Ion	Ratio	Lower	Upper
43	100		
61	2.8	10.7	16.1#
70	7.1	8.8	13.2#

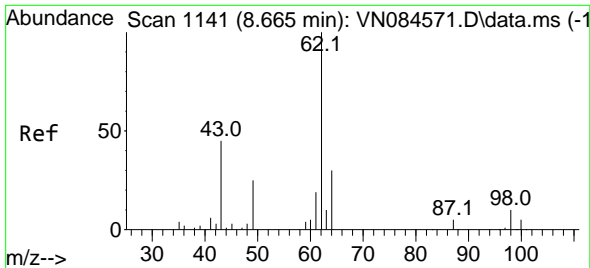


#38  
 Carbon Tetrachloride  
 Concen: 5.784 ug/l  
 RT: 8.224 min Scan# 1066  
 Delta R.T. -0.135 min  
 Lab File: VN084967.D  
 Acq: 20 Nov 2024 14:33

Tgt Ion: 117 Resp: 18188

Ion	Ratio	Lower	Upper
117	100		
119	8.8	78.7	118.1#
121	0.0	24.4	36.6#

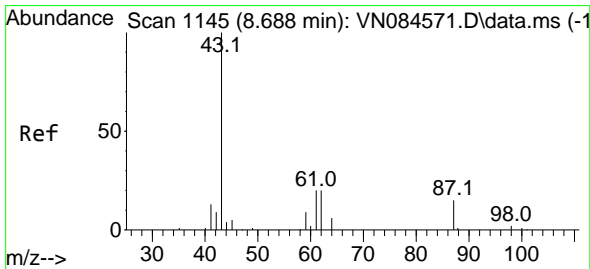
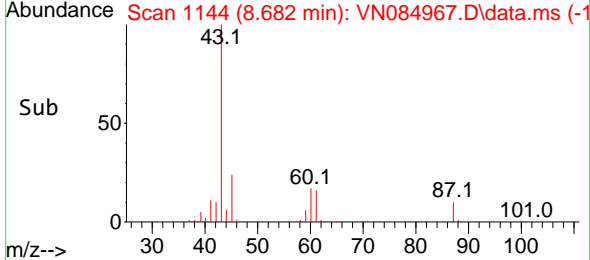
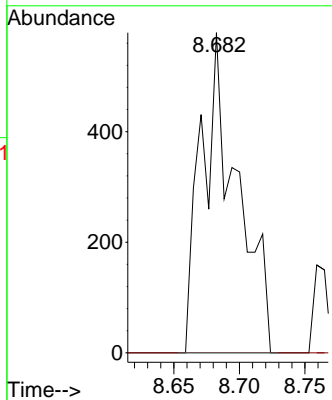
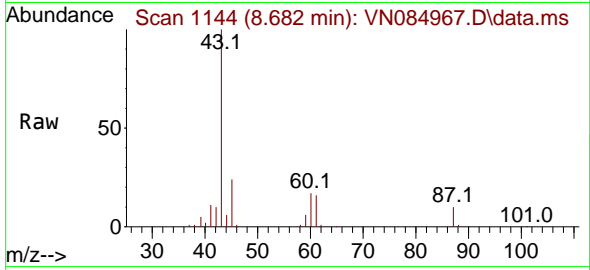




#42  
 1,2-Dichloroethane  
 Concen: 0.372 ug/l  
 RT: 8.682 min Scan# 1144  
 Delta R.T. 0.011 min  
 Lab File: VN084967.D  
 Acq: 20 Nov 2024 14:33

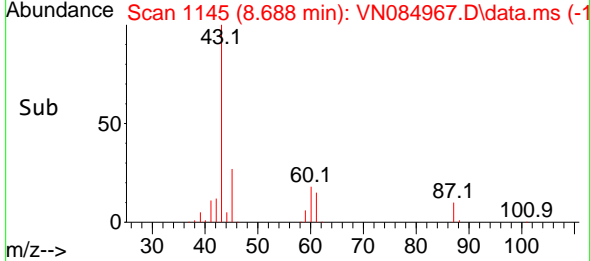
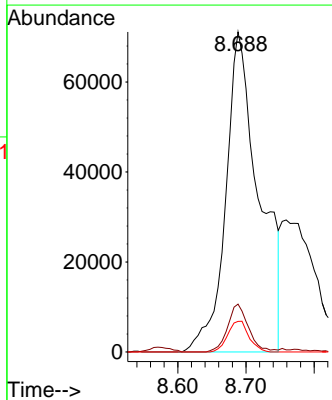
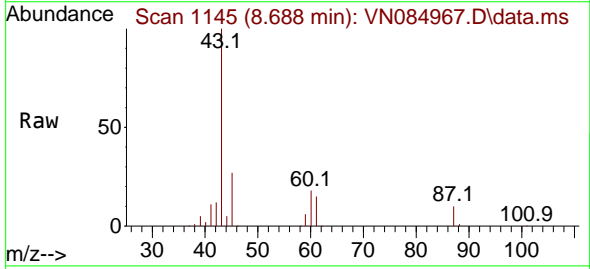
Instrument : MSVOA\_N  
 ClientSampleId : PB165122TB

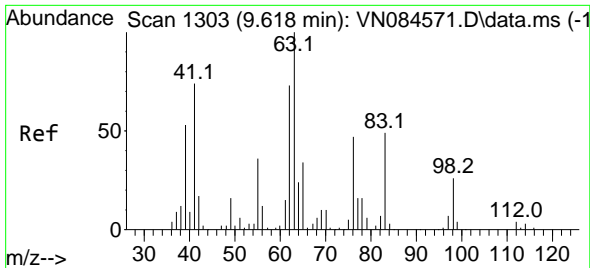
Tgt Ion: 62 Resp: 1089  
 Ion Ratio Lower Upper  
 62 100  
 98 0.0 0.0 18.2



#43  
 Isopropyl Acetate  
 Concen: 51.472 ug/l  
 RT: 8.688 min Scan# 1145  
 Delta R.T. 0.000 min  
 Lab File: VN084967.D  
 Acq: 20 Nov 2024 14:33

Tgt Ion: 43 Resp: 242604  
 Ion Ratio Lower Upper  
 43 100  
 61 9.4 20.4 30.6#  
 87 6.1 10.3 15.5#

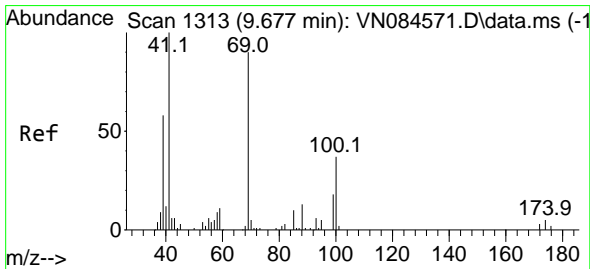
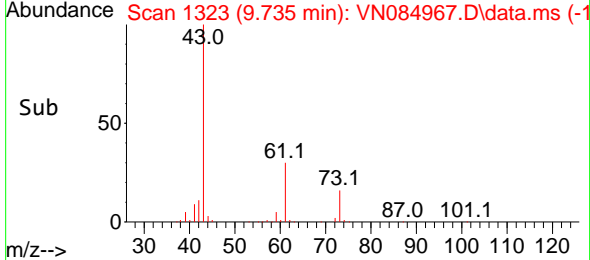
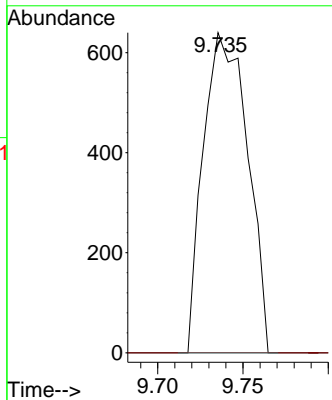
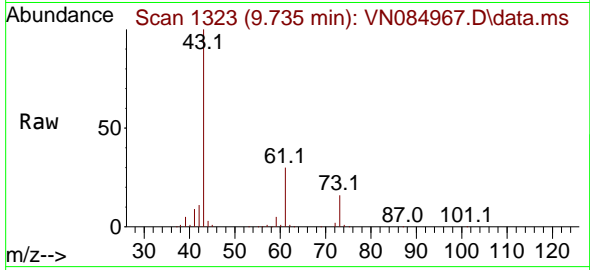




#45  
 1,2-Dichloropropane  
 Concen: 0.544 ug/l  
 RT: 9.735 min Scan# 1110  
 Delta R.T. 0.117 min  
 Lab File: VN084967.D  
 Acq: 20 Nov 2024 14:33

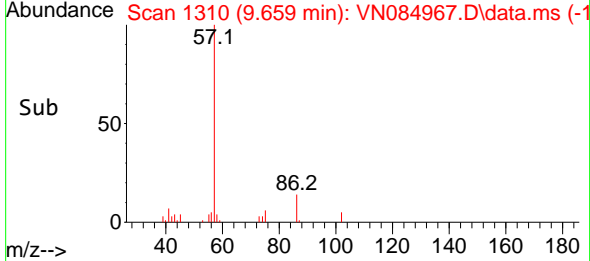
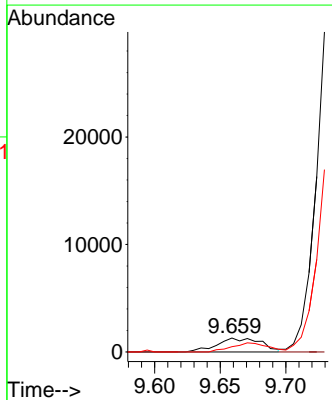
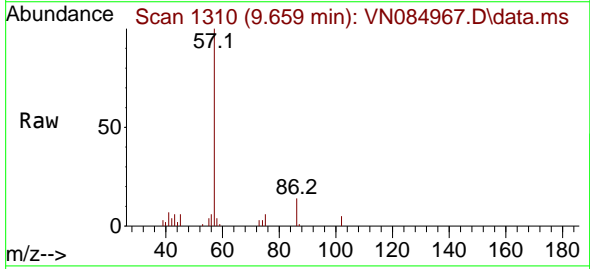
Instrument : MSVOA\_N  
 ClientSampleId : PB165122TB

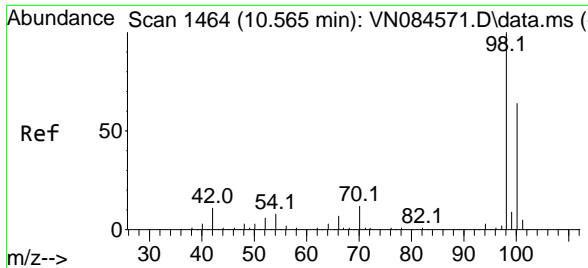
Tgt Ion: 63 Resp: 1153  
 Ion Ratio Lower Upper  
 63 100  
 65 0.0 24.6 37.0#



#48  
 Methyl methacrylate  
 Concen: 1.522 ug/l  
 RT: 9.659 min Scan# 1310  
 Delta R.T. -0.018 min  
 Lab File: VN084967.D  
 Acq: 20 Nov 2024 14:33

Tgt Ion: 41 Resp: 3024  
 Ion Ratio Lower Upper  
 41 100  
 69 0.0 67.1 100.7#  
 39 55.1 45.8 68.6

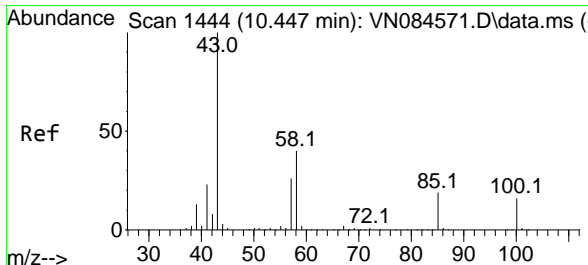
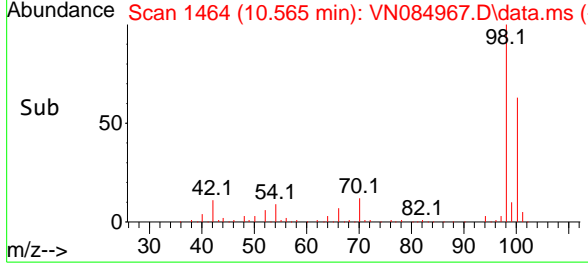
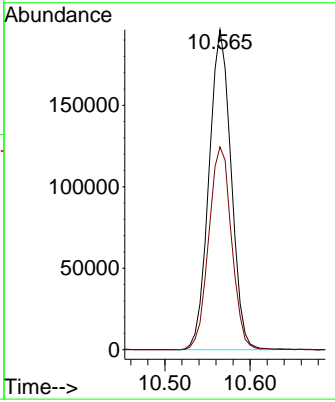
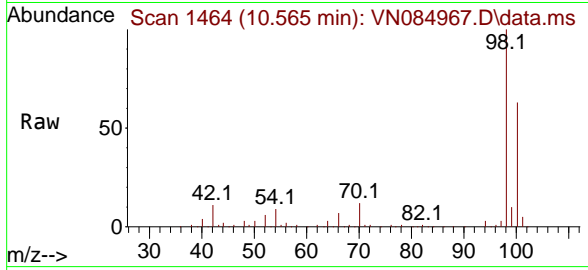




#50  
 Toluene-d8  
 Concen: 47.451 ug/l  
 RT: 10.565 min Scan# 1464  
 Delta R.T. -0.000 min  
 Lab File: VN084967.D  
 Acq: 20 Nov 2024 14:33

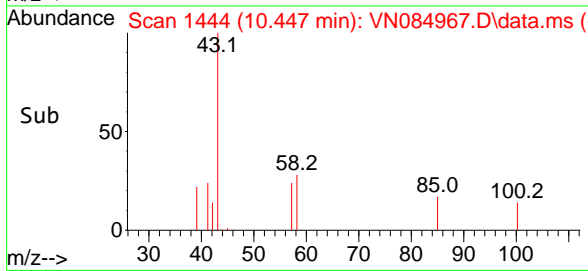
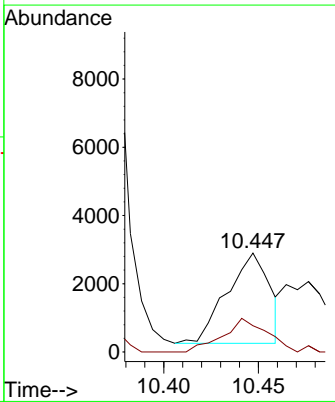
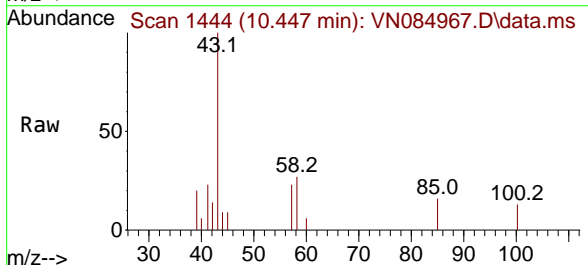
Instrument : MSVOA\_N  
 ClientSampleId : PB165122TB

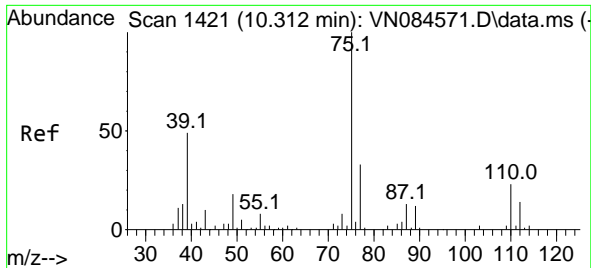
Tgt Ion: 98 Resp: 354600  
 Ion Ratio Lower Upper  
 98 100  
 100 65.3 52.7 79.1



#51  
 4-Methyl-2-Pentanone  
 Concen: 1.714 ug/l  
 RT: 10.447 min Scan# 1444  
 Delta R.T. 0.006 min  
 Lab File: VN084967.D  
 Acq: 20 Nov 2024 14:33

Tgt Ion: 43 Resp: 4172  
 Ion Ratio Lower Upper  
 43 100  
 58 39.4 31.6 47.4





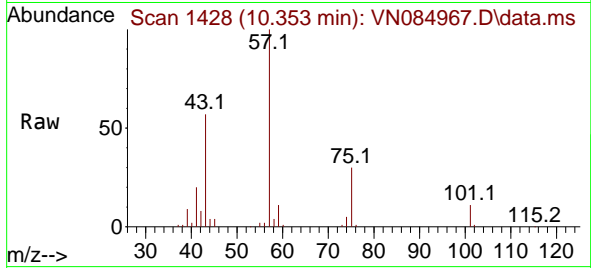
#54  
 cis-1,3-Dichloropropene  
 Concen: 10.657 ug/l  
 RT: 10.353 min Scan# 1428  
 Delta R.T. 0.041 min  
 Lab File: VN084967.D  
 Acq: 20 Nov 2024 14:33

Instrument :

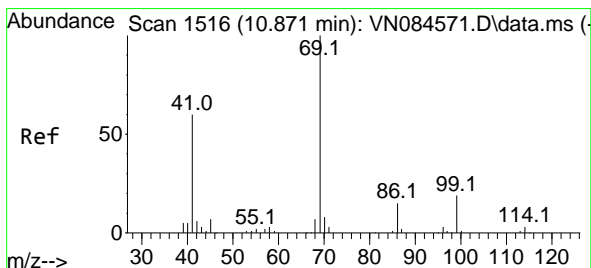
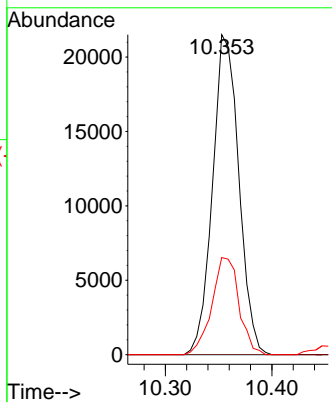
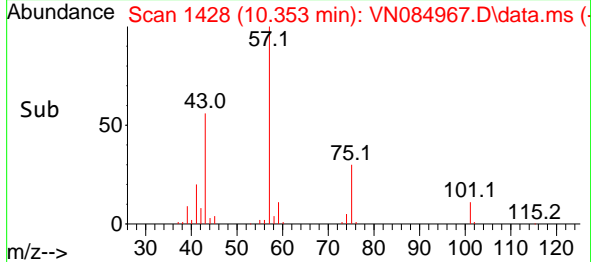
MSVOA\_N

ClientSampleId :

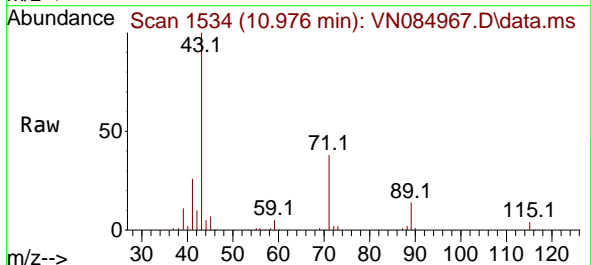
PB165122TB



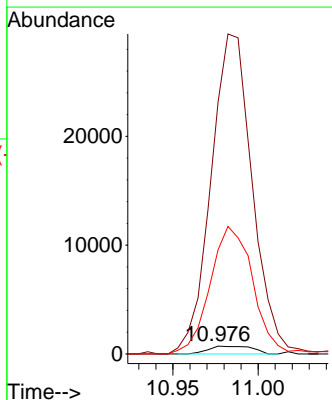
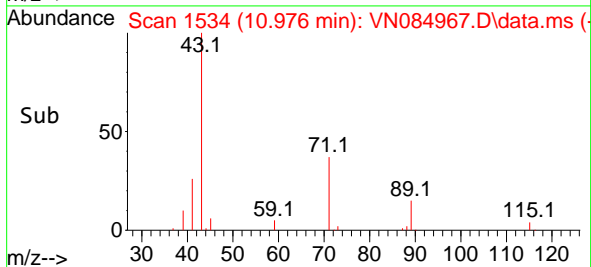
Tgt Ion: 75 Resp: 36809  
 Ion Ratio Lower Upper  
 75 100  
 77 0.0 24.2 36.2#  
 39 30.4 38.7 58.1#

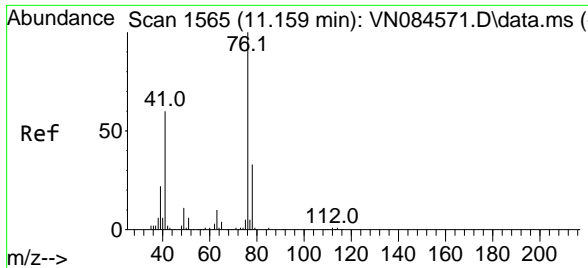


#56  
 Ethyl methacrylate  
 Concen: 0.449 ug/l  
 RT: 10.976 min Scan# 1534  
 Delta R.T. 0.106 min  
 Lab File: VN084967.D  
 Acq: 20 Nov 2024 14:33



Tgt Ion: 69 Resp: 1292  
 Ion Ratio Lower Upper  
 69 100  
 41 3852.8 53.3 79.9#  
 39 1595.1 28.8 43.2#

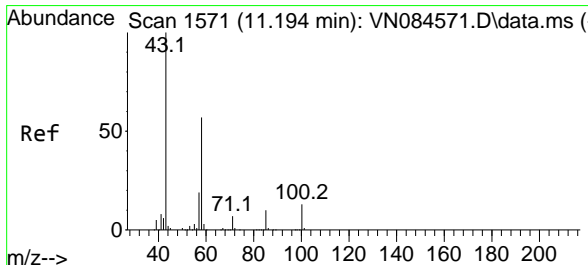
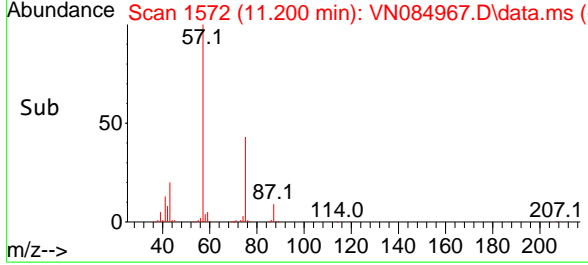
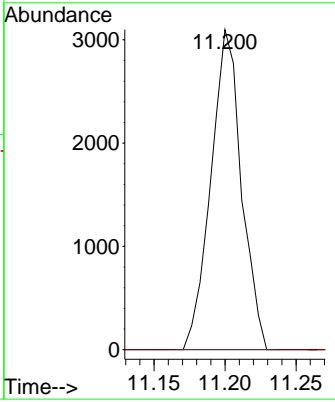
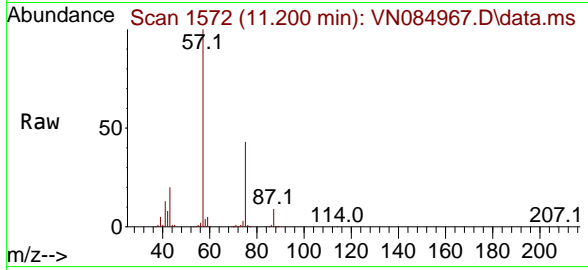




#57  
 1,3-Dichloropropane  
 Concen: 1.357 ug/l  
 RT: 11.200 min Scan# 1572  
 Delta R.T. 0.041 min  
 Lab File: VN084967.D  
 Acq: 20 Nov 2024 14:33

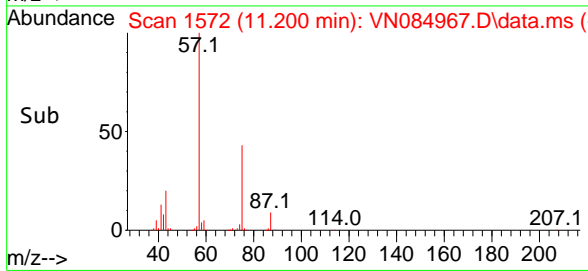
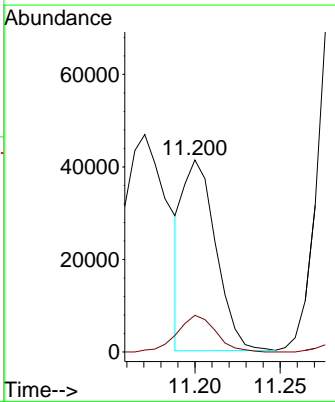
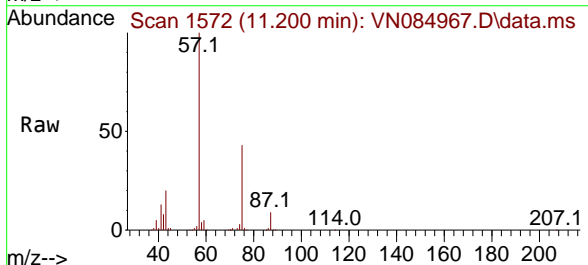
Instrument : MSVOA\_N  
 ClientSampleId : PB165122TB

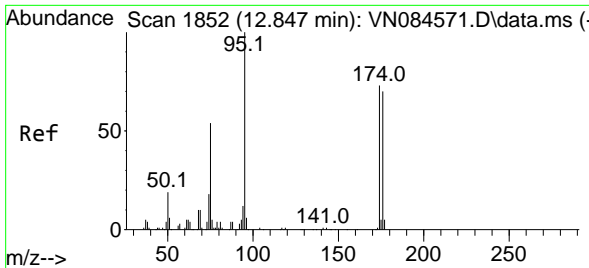
Tgt Ion: 76 Resp: 4637  
 Ion Ratio Lower Upper  
 76 100  
 78 0.0 25.8 38.6#



#59  
 2-Hexanone  
 Concen: 31.305 ug/l  
 RT: 11.200 min Scan# 1572  
 Delta R.T. 0.006 min  
 Lab File: VN084967.D  
 Acq: 20 Nov 2024 14:33

Tgt Ion: 43 Resp: 55450  
 Ion Ratio Lower Upper  
 43 100  
 58 22.6 27.3 81.8#



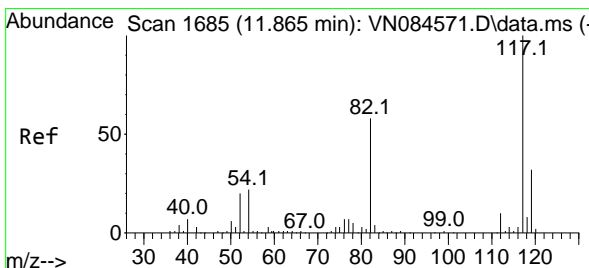
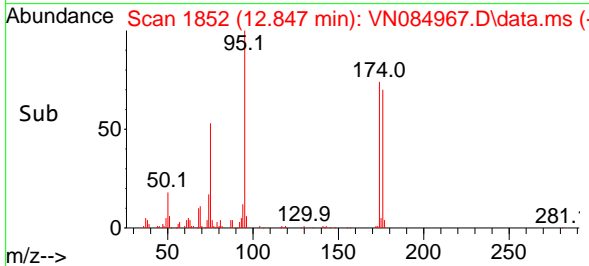
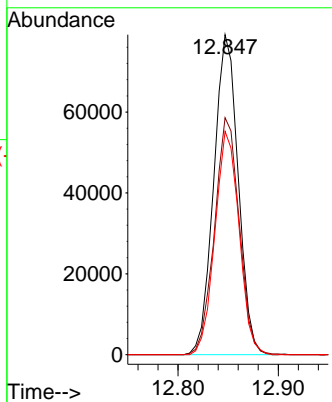
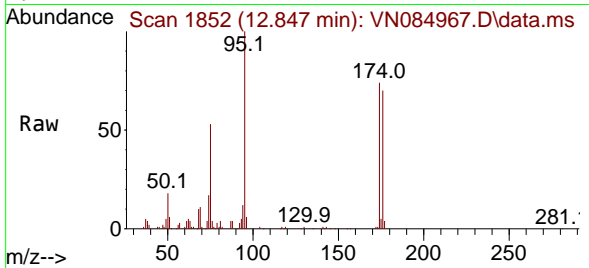


#62  
 4-Bromofluorobenzene  
 Concen: 47.806 ug/l  
 RT: 12.847 min Scan# 1852  
 Delta R.T. -0.000 min  
 Lab File: VN084967.D  
 Acq: 20 Nov 2024 14:33

Instrument : MSVOA\_N  
 ClientSampleId : PB165122TB

Tgt Ion: 95 Resp: 133518

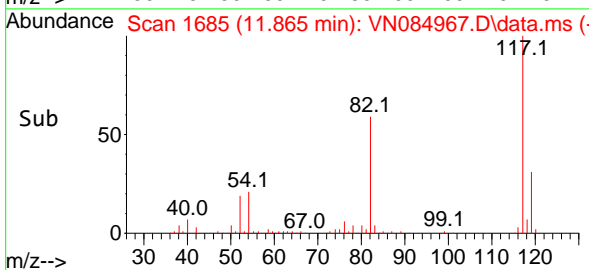
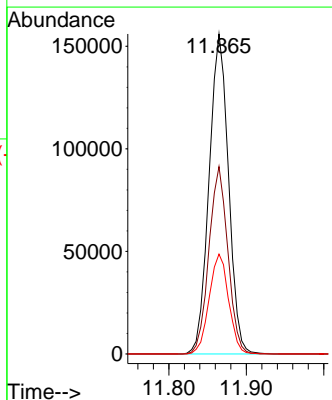
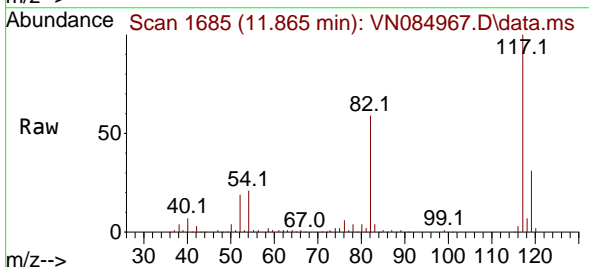
Ion	Ratio	Lower	Upper
95	100		
174	75.2	0.0	145.2
176	69.1	0.0	140.0



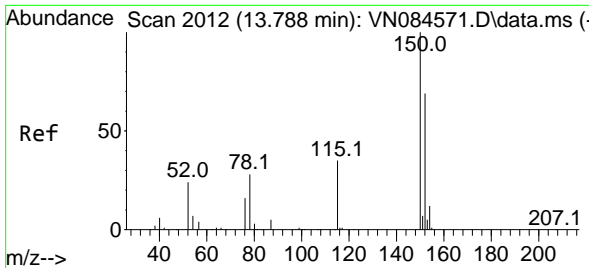
#63  
 Chlorobenzene-d5  
 Concen: 50.000 ug/l  
 RT: 11.865 min Scan# 1685  
 Delta R.T. -0.000 min  
 Lab File: VN084967.D  
 Acq: 20 Nov 2024 14:33

Tgt Ion: 117 Resp: 271233

Ion	Ratio	Lower	Upper
117	100		
82	58.6	47.2	70.8
119	31.2	25.4	38.0

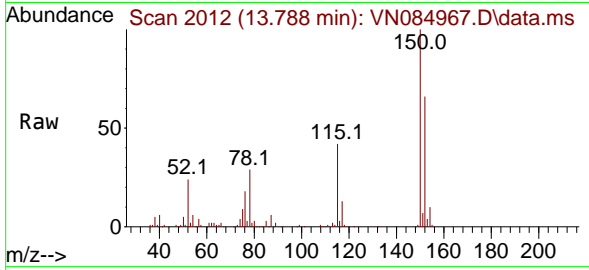




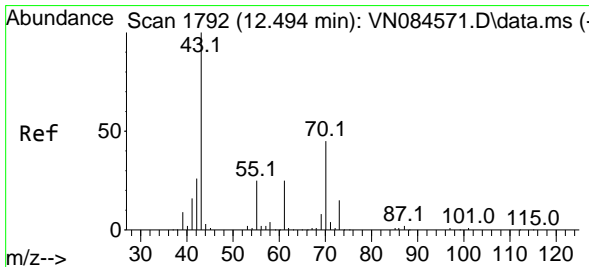
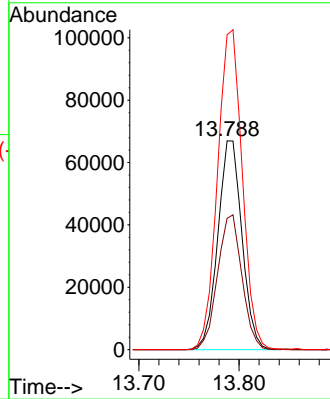
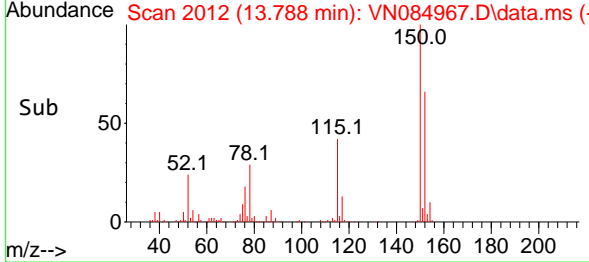


#72  
 1,4-Dichlorobenzene-d4  
 Concen: 50.000 ug/l  
 RT: 13.788 min Scan# 20  
 Delta R.T. 0.000 min  
 Lab File: VN084967.D  
 Acq: 20 Nov 2024 14:33

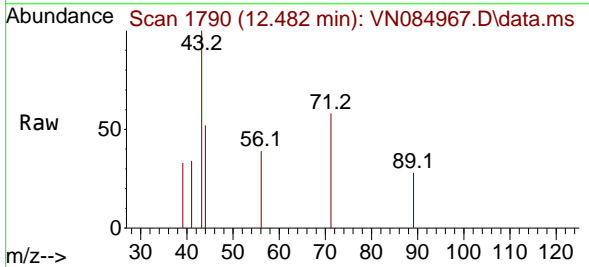
Instrument : MSVOA\_N  
 ClientSampleId : PB165122TB



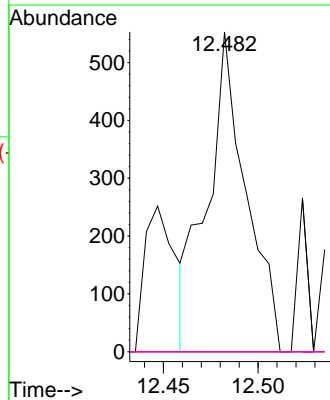
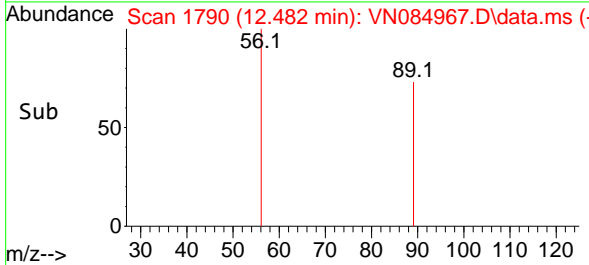
Tgt Ion:152 Resp: 111994  
 Ion Ratio Lower Upper  
 152 100  
 115 65.2 31.3 93.9  
 150 157.0 0.0 349.8

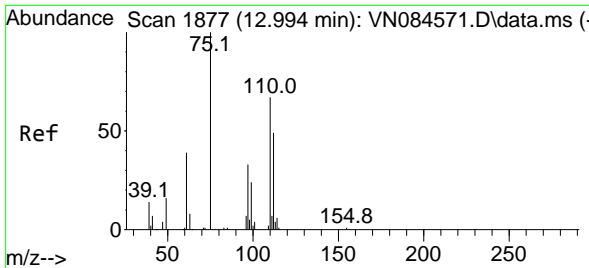


#74  
 N-amy1 acetate  
 Concen: 0.235 ug/l  
 RT: 12.482 min Scan# 1790  
 Delta R.T. -0.012 min  
 Lab File: VN084967.D  
 Acq: 20 Nov 2024 14:33



Tgt Ion: 43 Resp: 786  
 Ion Ratio Lower Upper  
 43 100  
 70 0.0 34.4 51.6#  
 55 0.0 19.6 29.4#  
 61 0.0 19.6 29.4#

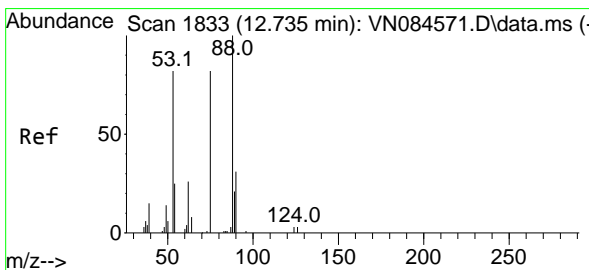
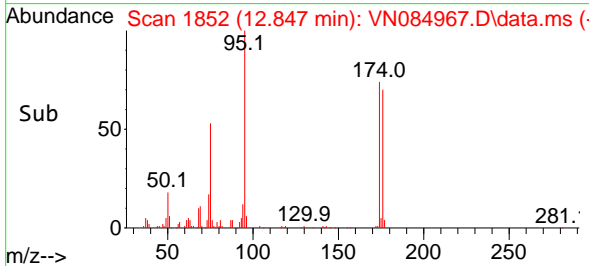
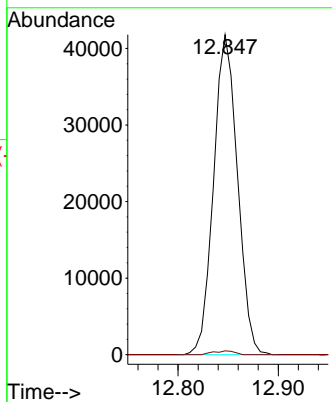
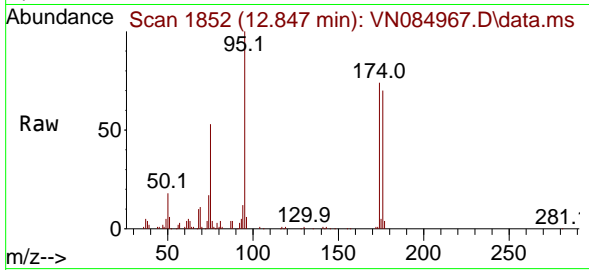




#76  
 1,2,3-Trichloropropane  
 Concen: 30.929 ug/l  
 RT: 12.847 min Scan# 1852  
 Delta R.T. -0.141 min  
 Lab File: VN084967.D  
 Acq: 20 Nov 2024 14:33

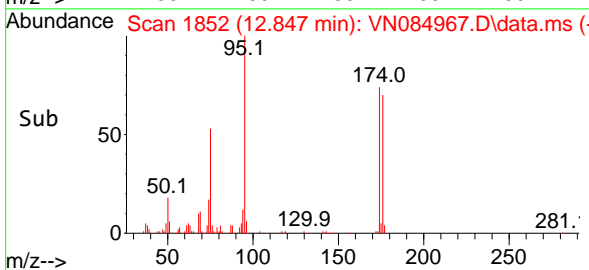
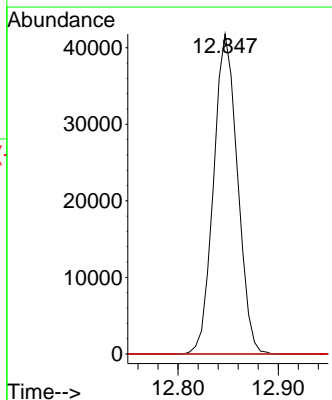
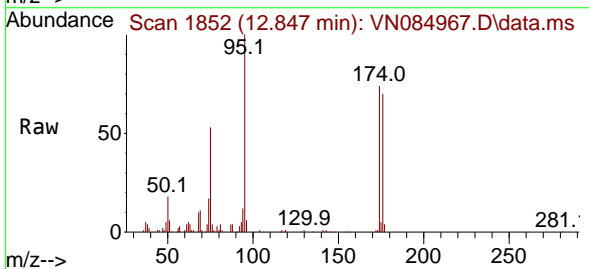
Instrument : MSVOA\_N  
 ClientSampleId : PB165122TB

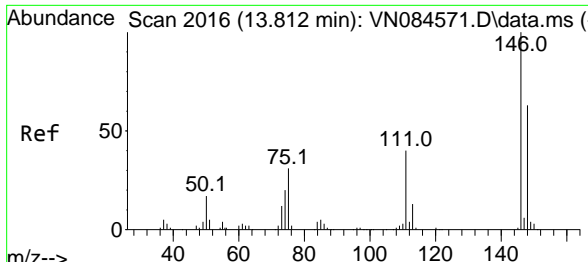
Tgt Ion: 75 Resp: 69240  
 Ion Ratio Lower Upper  
 75 100  
 77 1.1 96.9 290.7#



#81  
 trans-1,4-Dichloro-2-butene  
 Concen: 73.375 ug/l  
 RT: 12.847 min Scan# 1852  
 Delta R.T. 0.112 min  
 Lab File: VN084967.D  
 Acq: 20 Nov 2024 14:33

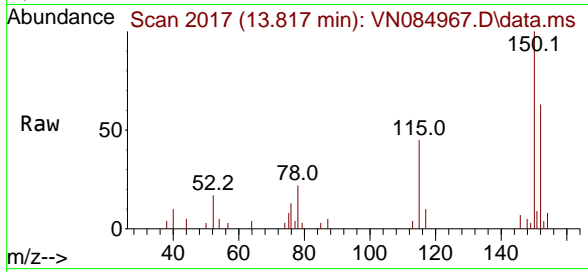
Tgt Ion: 75 Resp: 69240  
 Ion Ratio Lower Upper  
 75 100  
 53 0.0 78.0 117.0#  
 89 0.0 35.5 53.3#





#88  
 1,4-Dichlorobenzene  
 Concen: Below Cal  
 RT: 13.817 min Scan# 20  
 Delta R.T. 0.005 min  
 Lab File: VN084967.D  
 Acq: 20 Nov 2024 14:33

Instrument : MSVOA\_N  
 ClientSampleId : PB165122TB



Tgt Ion:146 Resp: 704

Ion	Ratio	Lower	Upper
146	100		
111	0.0	21.2	63.6#
148	0.0	31.9	95.9#

