

Data Path : Z:\voasrv\HPCHEM1\MSVOA_N\Data\VN112221\
 Data File : VN069614.D
 Acq On : 22 Nov 2021 17:03
 Operator : JC/MD
 Sample : M4703-04 5X
 Misc : 5.00mL/MSVOA_N/WATER
 ALS Vial : 14 Sample Multiplier: 1

Instrument :
 MSVOA_N
ClientSampleId :
 14B-4

Quant Time: Nov 23 03:53:19 2021
 Quant Method : Z:\voasrv\HPCHEM1\MSVOA_N\methods\624N111021W.M
 Quant Title : METHOD 624 VOLATILE ORGANIC ANALYSIS
 QLast Update : Wed Nov 10 14:36:17 2021
 Response via : Initial Calibration

Manual Integrations
APPROVED
 Reviewed By :John Carlone 11/23/2021
 Supervised By :Mahesh Dadoda 11/23/2021

Compound	R.T.	QIon	Response	Conc	Units	Dev(Min)

Internal Standards						
1) Bromochloromethane	7.665	128	160572	30.000	ug/l	0.00
28) 1,4-Difluorobenzene	8.968	114	873128	30.000	ug/l	0.00
57) Chlorobenzene-d5	11.747	117	740736	30.000	ug/l	0.00
System Monitoring Compounds						
27) 1,2-Dichloroethane-d4	8.440	65	438196	31.466	ug/l	0.00
Spiked Amount	30.000	Range 91 - 110	Recovery	=	104.900%	
60) 4-Bromofluorobenzene	12.733	95	288499	24.338	ug/l	0.00
Spiked Amount	30.000	Range 63 - 112	Recovery	=	81.133%	
63) Toluene-d8	10.443	98	1072248	31.351	ug/l	0.00
Spiked Amount	30.000	Range 91 - 112	Recovery	=	104.500%	
Target Compounds						
						Qvalue
15) Acetone	4.301	58	7850m	3.737	ug/l	
25) Chloroform	7.820	83	1989379	103.778	ug/l	99
41) Bromodichloromethane	9.765	83	105063	7.786	ug/l	96
53) Dibromochloromethane	11.234	129	2904m	0.298	ug/l	

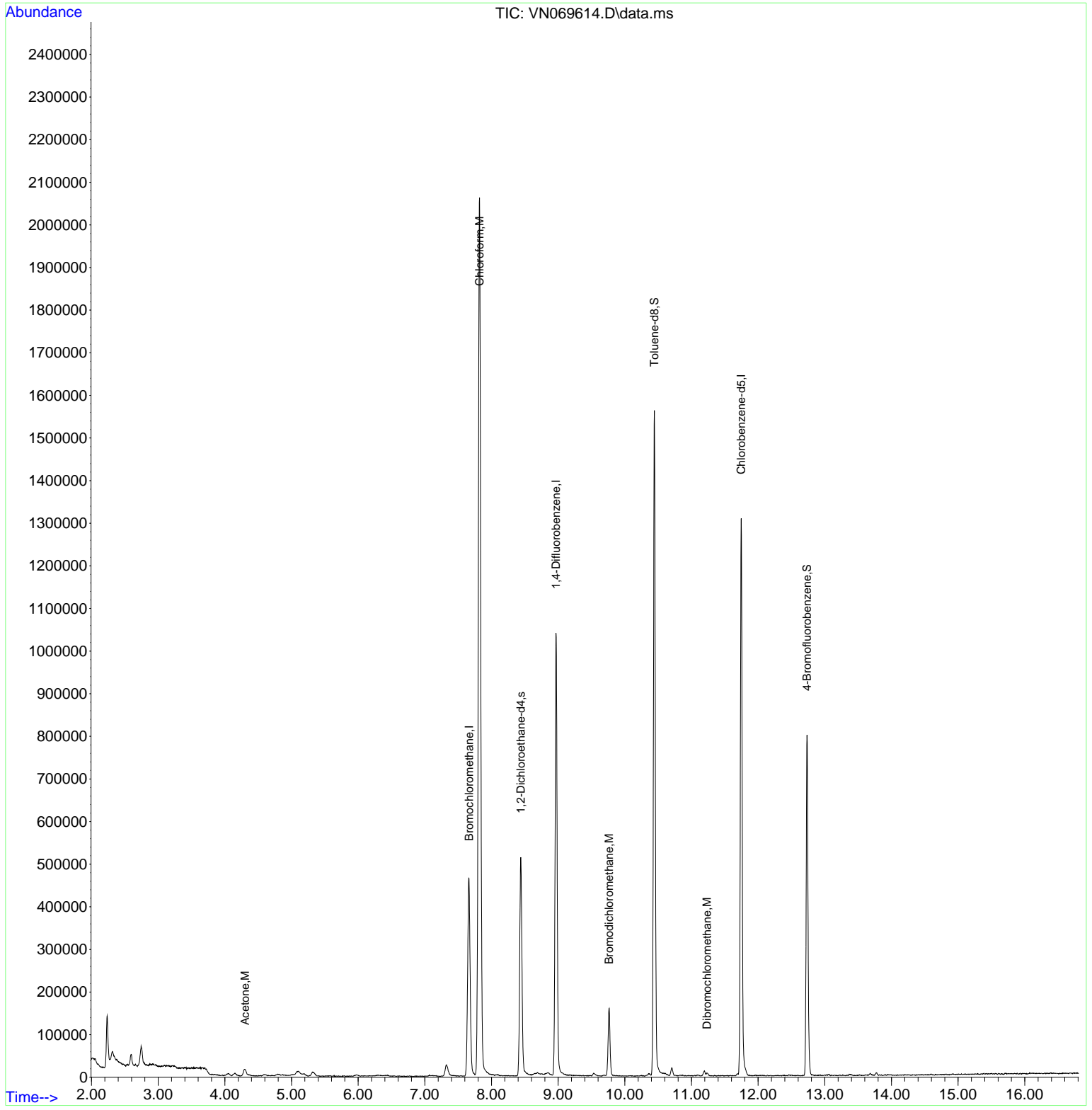
(#) = qualifier out of range (m) = manual integration (+) = signals summed

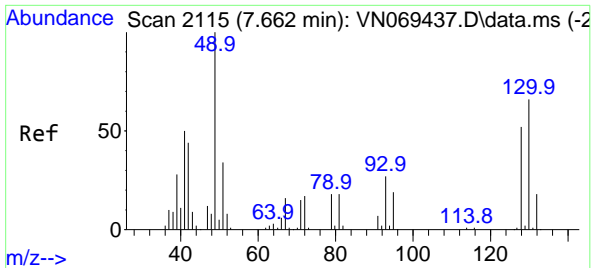
Data Path : Z:\voasrv\HPCHEM1\MSVOA_N\Data\VN112221\
 Data File : VN069614.D
 Acq On : 22 Nov 2021 17:03
 Operator : JC/MD
 Sample : M4703-04 5X
 Misc : 5.00mL/MSVOA_N/WATER
 ALS Vial : 14 Sample Multiplier: 1

Instrument :
 MSVOA_N
ClientSampleId :
 14B-4

Manual Integrations
APPROVED
 Reviewed By :John Carlone 11/23/2021
 Supervised By :Mahesh Dadoda 11/23/2021

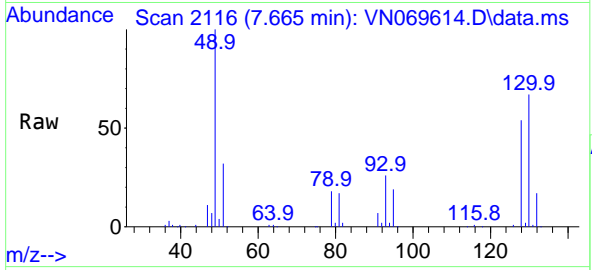
Quant Time: Nov 23 03:53:19 2021
 Quant Method : Z:\voasrv\HPCHEM1\MSVOA_N\methods\624N111021W.M
 Quant Title : METHOD 624 VOLATILE ORGANIC ANALYSIS
 QLast Update : Wed Nov 10 14:36:17 2021
 Response via : Initial Calibration





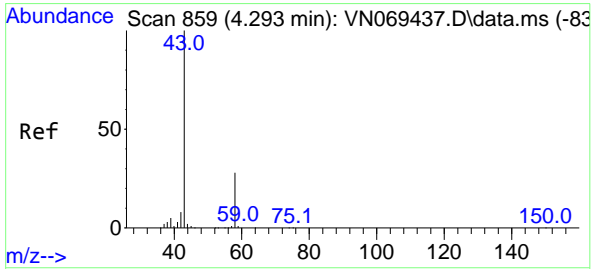
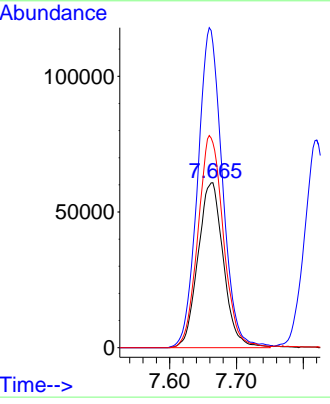
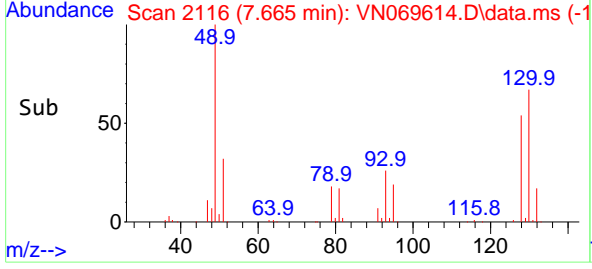
#1
 Bromochloromethane
 Concen: 30.000 ug/l
 RT: 7.665 min Scan# 2115
 Delta R.T. 0.003 min
 Lab File: VN069614.D
 Acq: 22 Nov 2021 17:03

Instrument : MSVOA_N
 ClientSampleId : 14B-4

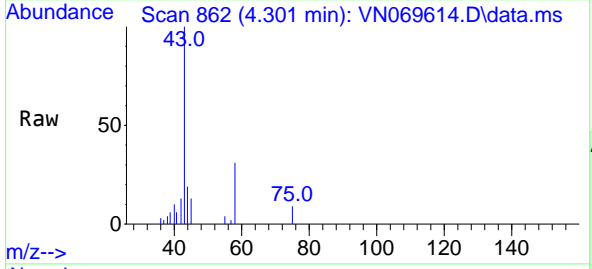


Tgt Ion:128 Resp: 160572
 Ion Ratio Lower Upper
 128 100
 49 187.4 0.0 392.3
 130 127.6 0.0 320.2

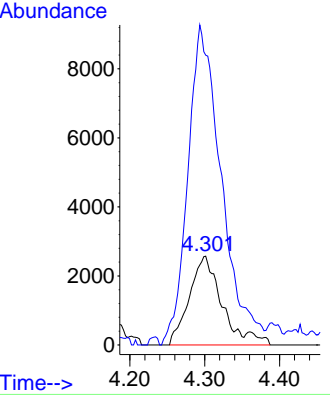
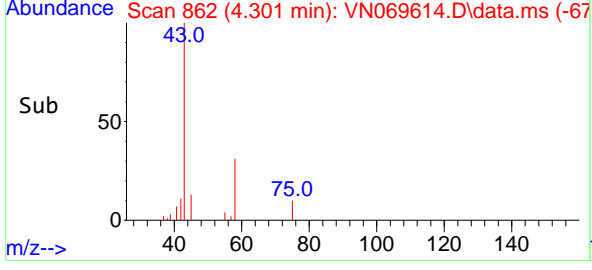
Manual Integrations
APPROVED
 Reviewed By :John Carlone 11/23/2021
 Supervised By :Mahesh Dadoda 11/23/2021

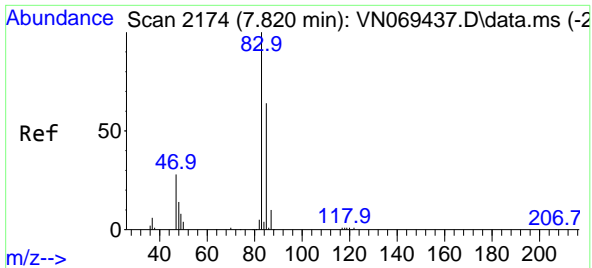


#15
 Acetone
 Concen: 3.737 ug/l m
 RT: 4.301 min Scan# 862
 Delta R.T. 0.014 min
 Lab File: VN069614.D
 Acq: 22 Nov 2021 17:03



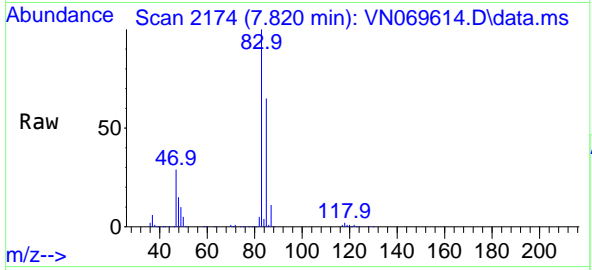
Tgt Ion: 58 Resp: 7850
 Ion Ratio Lower Upper
 58 100
 43 326.3 256.6 384.8





#25
 Chloroform
 Concen: 103.778 ug/l
 RT: 7.820 min Scan# 2174
 Delta R.T. 0.000 min
 Lab File: VN069614.D
 Acq: 22 Nov 2021 17:03

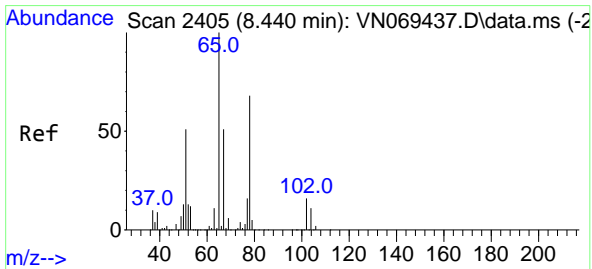
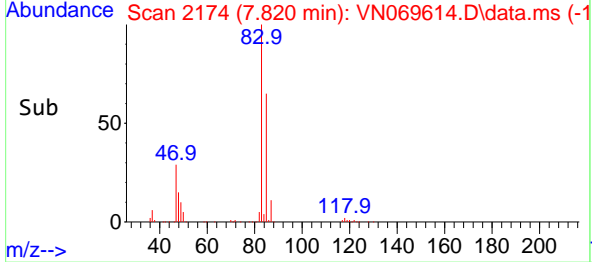
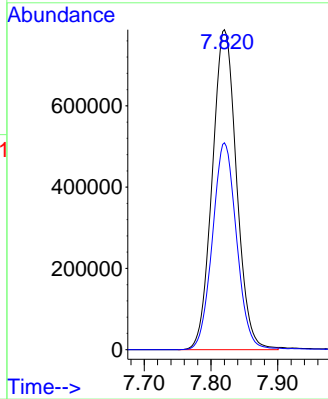
Instrument : MSVOA_N
 ClientSampleId : 14B-4



Tgt Ion: 83 Resp: 1989379
 Ion Ratio Lower Upper
 83 100
 85 64.7 51.3 76.9

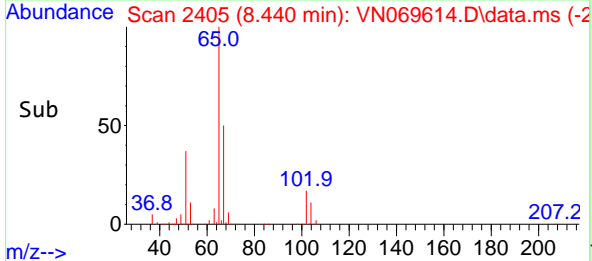
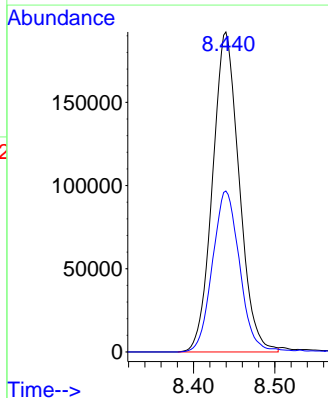
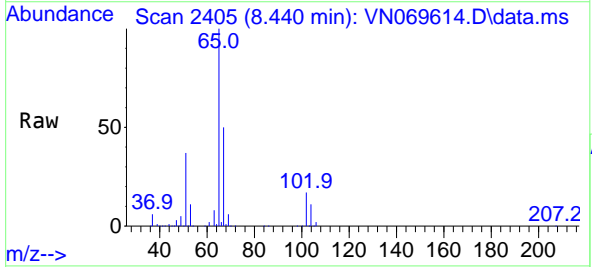
Manual Integrations
APPROVED

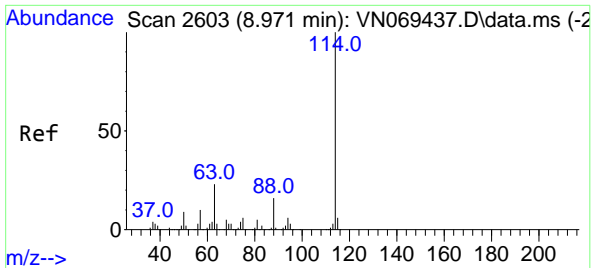
Reviewed By :John Carlone 11/23/2021
 Supervised By :Mahesh Dadoda 11/23/2021



#27
 1,2-Dichloroethane-d4
 Concen: 31.466 ug/l
 RT: 8.440 min Scan# 2405
 Delta R.T. 0.000 min
 Lab File: VN069614.D
 Acq: 22 Nov 2021 17:03

Tgt Ion: 65 Resp: 438196
 Ion Ratio Lower Upper
 65 100
 67 50.9 40.2 60.2





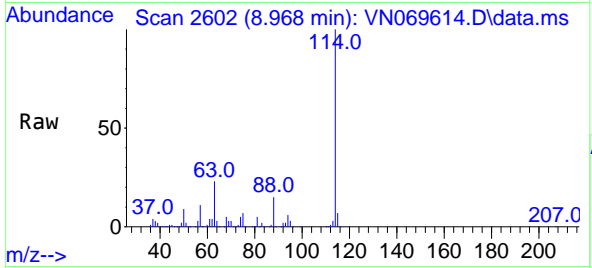
#28
 1,4-Difluorobenzene
 Concen: 30.000 ug/l
 RT: 8.968 min Scan# 20
 Delta R.T. -0.003 min
 Lab File: VN069614.D
 Acq: 22 Nov 2021 17:03

Instrument :

MSVOA_N

ClientSampleId :

14B-4

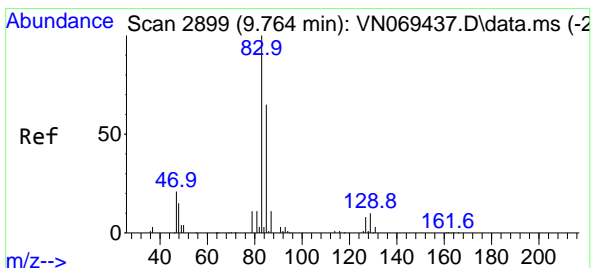
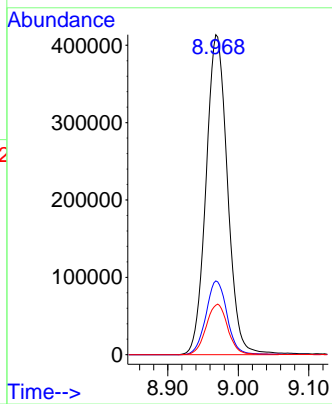
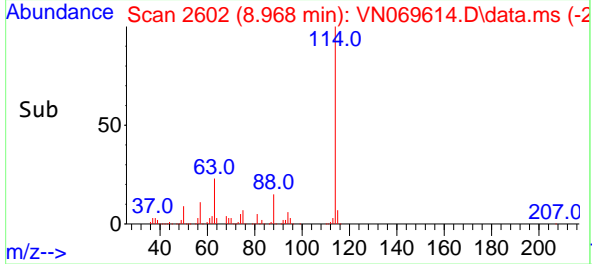


Tgt Ion:114 Resp: 873128
 Ion Ratio Lower Upper
 114 100
 63 22.8 15.8 23.6
 88 15.8 11.6 17.4

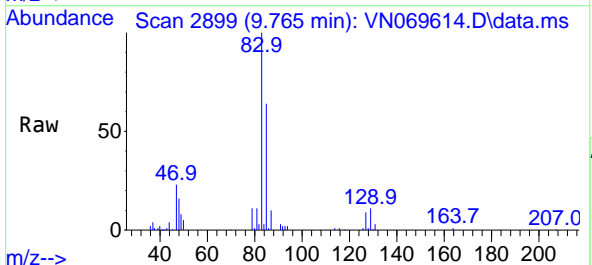
Manual Integrations

APPROVED

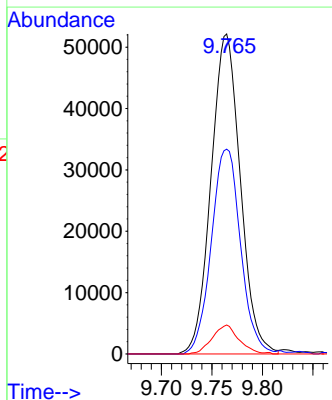
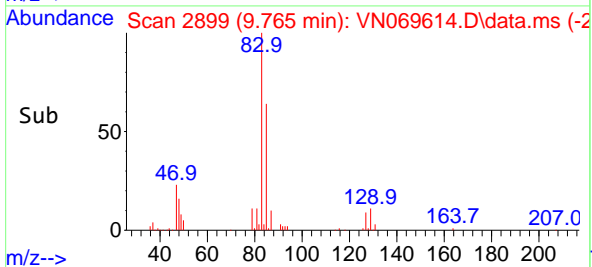
Reviewed By :John Carlone 11/23/2021
 Supervised By :Mahesh Dadoda 11/23/2021

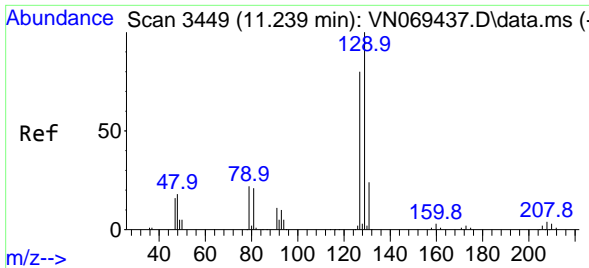


#41
 Bromodichloromethane
 Concen: 7.786 ug/l
 RT: 9.765 min Scan# 2899
 Delta R.T. 0.000 min
 Lab File: VN069614.D
 Acq: 22 Nov 2021 17:03



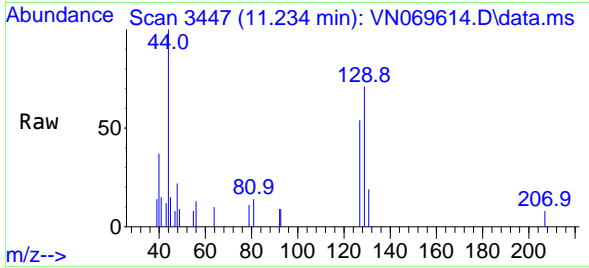
Tgt Ion: 83 Resp: 105063
 Ion Ratio Lower Upper
 83 100
 85 64.0 54.1 81.1
 127 9.1 7.6 11.4





#53
 Dibromochloromethane
 Concen: 0.298 ug/l m
 RT: 11.234 min Scan# 3449
 Delta R.T. -0.005 min
 Lab File: VN069614.D
 Acq: 22 Nov 2021 17:03

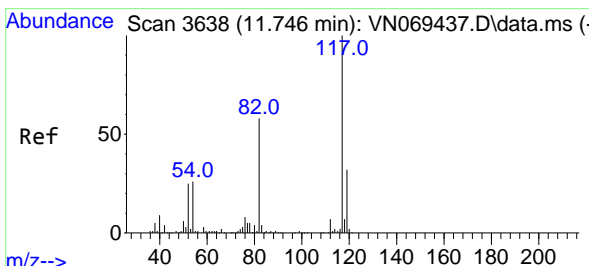
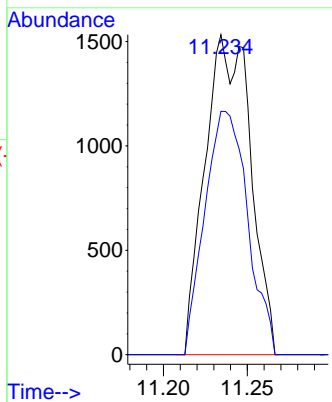
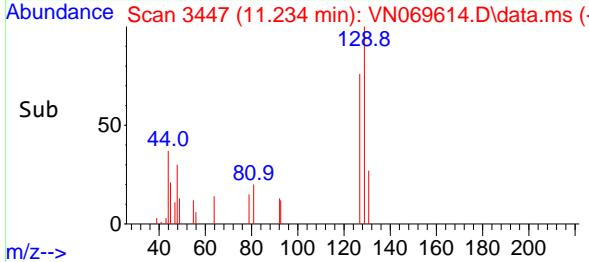
Instrument : MSVOA_N
 ClientSampleId : 14B-4



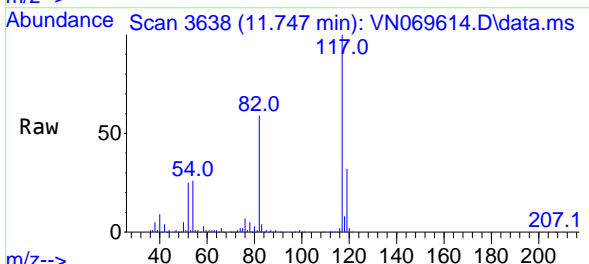
Tgt Ion:129 Resp: 2904
 Ion Ratio Lower Upper
 129 100
 127 71.2 39.0 117.0

Manual Integrations
 APPROVED

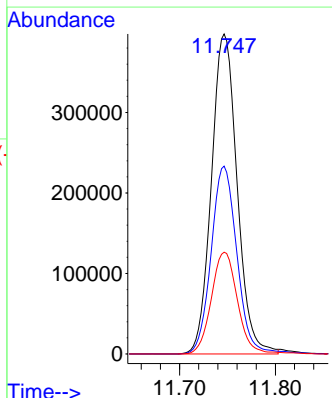
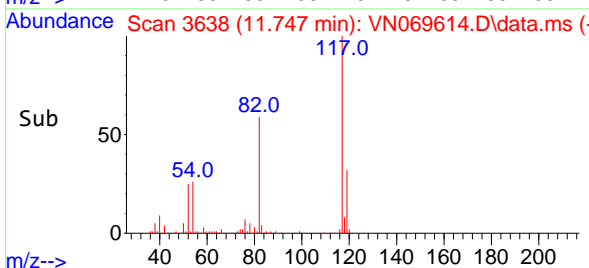
Reviewed By :John Carlone 11/23/2021
 Supervised By :Mahesh Dadoda 11/23/2021

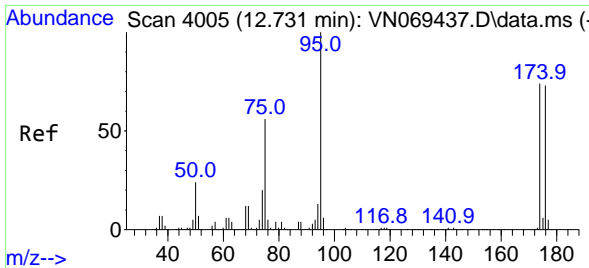


#57
 Chlorobenzene-d5
 Concen: 30.000 ug/l
 RT: 11.747 min Scan# 3638
 Delta R.T. 0.000 min
 Lab File: VN069614.D
 Acq: 22 Nov 2021 17:03



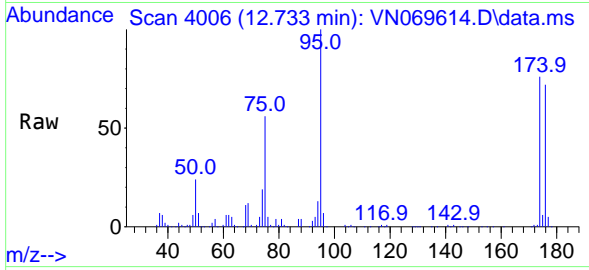
Tgt Ion:117 Resp: 740736
 Ion Ratio Lower Upper
 117 100
 82 59.1 43.6 65.4
 119 32.0 25.8 38.6





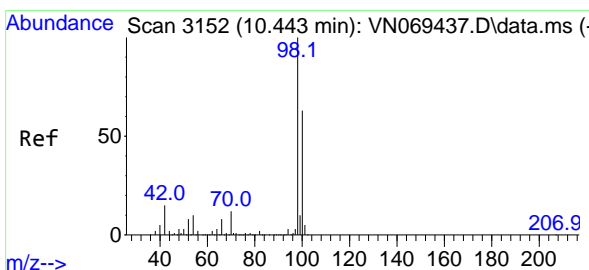
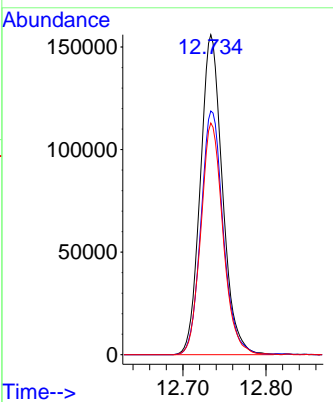
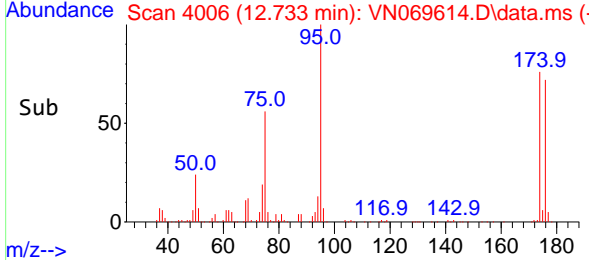
#60
 4-Bromofluorobenzene
 Concen: 24.338 ug/l
 RT: 12.733 min Scan# 4005
 Delta R.T. 0.000 min
 Lab File: VN069614.D
 Acq: 22 Nov 2021 17:03

Instrument : MSVOA_N
 ClientSampleId : 14B-4

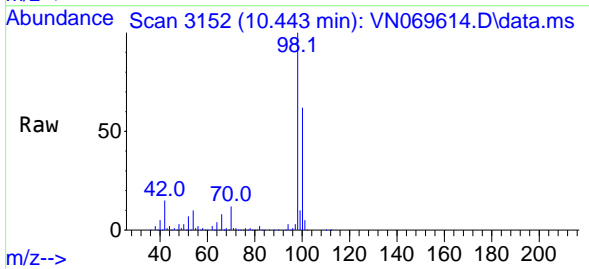


Tgt Ion: 95 Resp: 288499
 Ion Ratio Lower Upper
 95 100
 174 76.8 62.9 94.3
 176 72.4 61.0 91.4

Manual Integrations
APPROVED
 Reviewed By :John Carlone 11/23/2021
 Supervised By :Mahesh Dadoda 11/23/2021



#63
 Toluene-d8
 Concen: 31.351 ug/l
 RT: 10.443 min Scan# 3152
 Delta R.T. 0.000 min
 Lab File: VN069614.D
 Acq: 22 Nov 2021 17:03



Tgt Ion: 98 Resp: 1072248
 Ion Ratio Lower Upper
 98 100
 100 63.5 50.6 76.0

