

Data Path : Z:\VOASRV\HPCHEM1\MSVOA N\DATA\VN112320\
 Data File : VN064782.D
 Acq On : 23 Nov 2020 13:55
 Operator : JC/MD
 Sample : IBLK
 Misc : 5.00mL/MSVOA N/WATER
 ALS Vial : 9 Sample Multiplier: 1

Instrument :
 MSVOA_N
 ClientSampled :
 IBLK

Integration Parameters: RTEINT.P
 Integrator: RTE
 Smoothing : ON Filtering: 5
 Sampling : 1 Min Area: 3 % of largest Peak
 Start Thrs: 0.2 Max Peaks: 100
 Stop Thrs : 0 Peak Location: TOP

If leading or trailing edge < 100 prefer < Baseline drop else tangent >
 Peak separation: 5

Method : Z:\VOASRV\HPCHEM1\MSVOA_N\METHODS\82N112320W.M
 Title : SW846 8260

Signal : TIC

peak #	R.T. min	first scan	max scan	last scan	PK TY	peak height	corr. area	corr. % max.	% of total
1	4.007	689	705	717	rBV2	3695	8671	1.06%	0.190%
2	7.550	1788	1807	1818	rBV2	103966	255548	31.24%	5.589%
3	7.624	1818	1830	1850	rVB2	176667	415580	50.81%	9.089%
4	7.987	1927	1943	1966	rBV	104947	247771	30.29%	5.419%
5	8.550	2103	2118	2139	rBV	280610	577373	70.59%	12.627%
6	10.061	2573	2588	2602	rBV	449419	817944	100.00%	17.889%
7	10.601	2748	2756	2764	rVB5	5289	8529	1.04%	0.187%
8	11.380	2980	2998	3017	rBV	447642	778631	95.19%	17.029%
9	11.595	3054	3065	3075	rBV2	5983	11302	1.38%	0.247%
10	12.376	3295	3308	3331	rBV	359590	593785	72.59%	12.986%
11	13.148	3539	3548	3560	rVB	5924	8753	1.07%	0.191%
12	13.260	3572	3583	3589	rBV4	11449	16530	2.02%	0.362%
13	13.318	3589	3601	3616	rVB	438399	726591	88.83%	15.891%
14	13.592	3677	3686	3691	rBV4	7527	10995	1.34%	0.240%
15	14.553	3976	3985	3995	rVB3	7265	10129	1.24%	0.222%
16	14.881	4078	4087	4097	rBV3	11851	18759	2.29%	0.410%
17	14.981	4110	4118	4126	rVB6	10494	15762	1.93%	0.345%
18	15.106	4147	4157	4170	rBV2	15495	25985	3.18%	0.568%
19	15.283	4203	4212	4224	rVB4	14807	23815	2.91%	0.521%

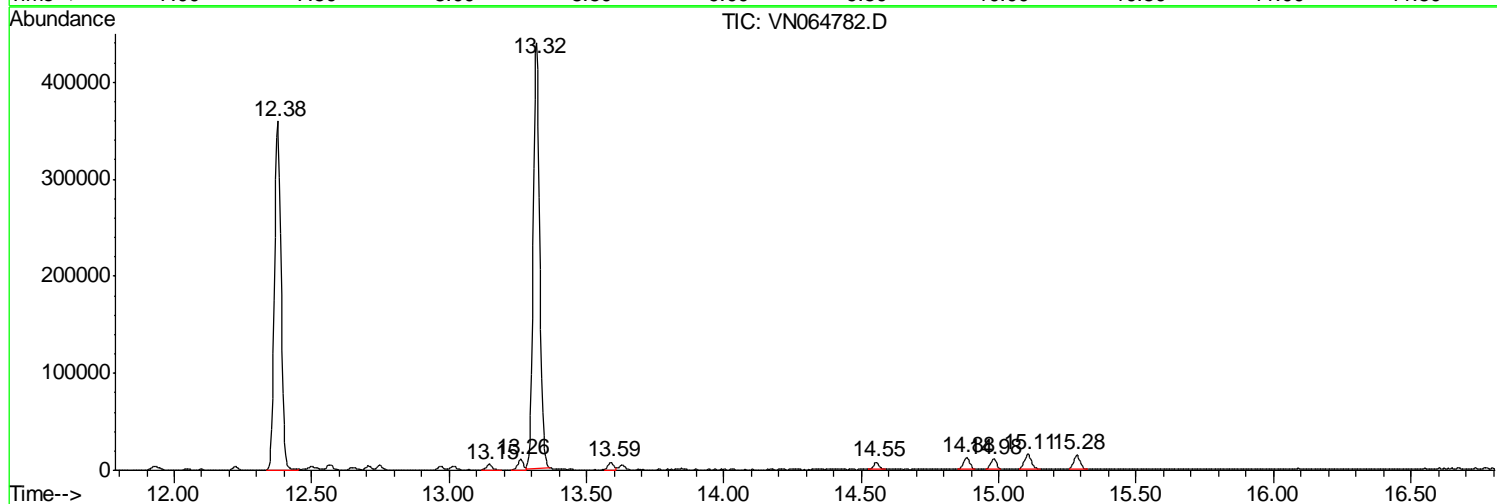
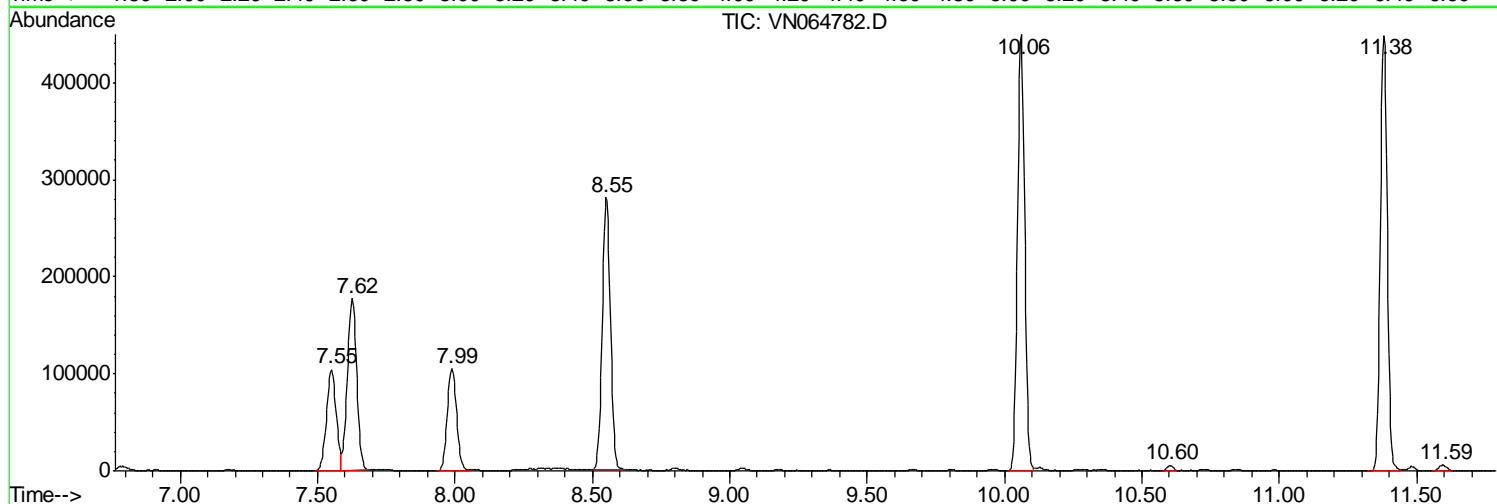
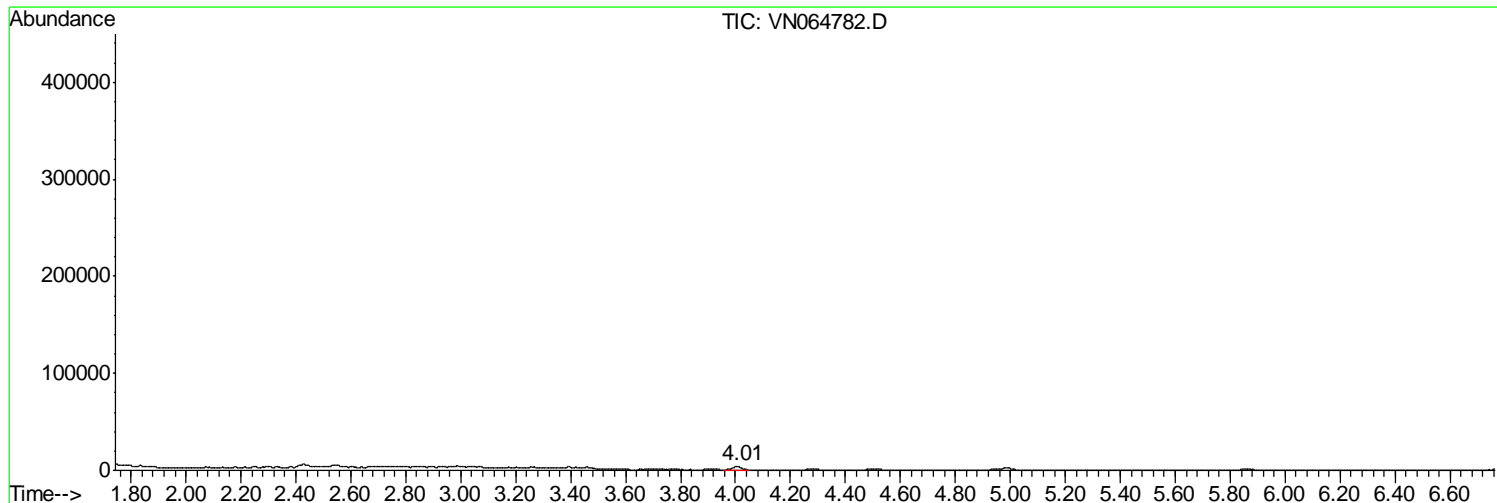
Sum of corrected areas: 4572453

Data Path : Z:\VOASRV\HPCHEM1\MSVOA N\DATA\VN112320\
 Data File : VN064782.D
 Acq On : 23 Nov 2020 13:55
 Operator : JC/MD
 Sample : IBLK
 Misc : 5.00mL/MSVOA N/WATER
 ALS Vial : 9 Sample Multiplier: 1

Instrument :
 MSVOA_N
 ClientSampleId :
 IBLK

Quant Method : Z:\VOASRV\HPCHEM1\MSVOA_N\METHODS\82N112320W.M
 Quant Title : SW846 8260

TIC Library : C:\DATABASE\NIST11.L
 TIC Integration Parameters: LSCINT.P



Data Path : Z:\VOASRV\HPCHEM1\MSVOA_N\DATA\VN112320\
Data File : VN064782.D
Acq On : 23 Nov 2020 13:55
Operator : JC/MD
Sample : IBLK
Misc : 5.00mL/MSVOA_N/WATER
ALS Vial : 9 Sample Multiplier: 1

Instrument :
MSVOA_N
ClientSampleId :
IBLK

Quant Method : Z:\VOASRV\HPCHEM1\MSVOA_N\METHODS\82N112320W.M
Quant Title : SW846 8260

TIC Library : C:\DATABASE\NIST11.L
TIC Integration Parameters: LSCINT.P

No Library Search Compounds Detected

Data Path : Z:\VOASRV\HPCHEM1\MSVOA_N\DATA\VN112320\
Data File : VN064782.D
Acq On : 23 Nov 2020 13:55
Operator : JC/MD
Sample : IBLK
Misc : 5.00mL/MSVOA_N/WATER
ALS Vial : 9 Sample Multiplier: 1

Instrument :
MSVOA_N
ClientSampleId :
IBLK

Quant Method : Z:\VOASRV\HPCHEM1\MSVOA_N\METHODS\82N112320W.M
Quant Title : SW846 8260

TIC Library : C:\DATABASE\NIST11.L
TIC Integration Parameters: LSCINT.P

TIC Top Hit name	RT	EstConc	Units	Response	--Internal Standard--			
					#	RT	Resp	Conc
