

Data Path : Z:\voasrv\HPCHEM1\MSVOA_N\Data\VN112321\
 Data File : VN069630.D
 Acq On : 23 Nov 2021 16:48
 Operator : JC/MD
 Sample : M4820-04 5X
 Misc : 5.00mL/MSVOA_N/WATER
 ALS Vial : 11 Sample Multiplier: 1

Instrument :
 MSVOA_N
 ClientSampleId :

Quant Time: Nov 24 02:27:12 2021
 Quant Method : Z:\voasrv\HPCHEM1\MSVOA_N\methods\624N111021W.M
 Quant Title : METHOD 624 VOLATILE ORGANIC ANALYSIS
 QLast Update : Wed Nov 10 14:36:17 2021
 Response via : Initial Calibration

Compound	R.T.	QIon	Response	Conc	Units	Dev(Min)

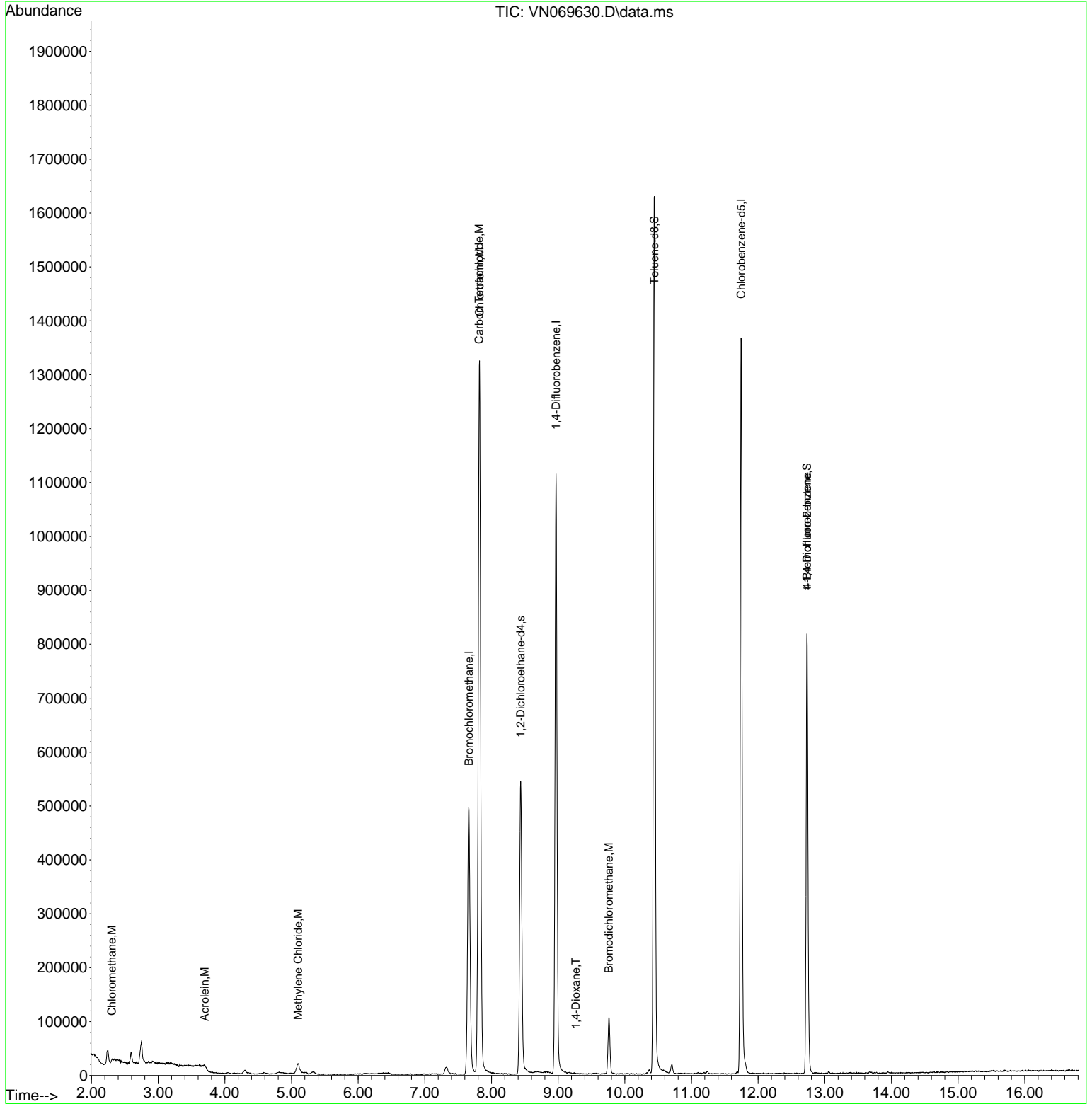
Internal Standards						
1) Bromochloromethane	7.662	128	169949	30.000	ug/l	0.00
28) 1,4-Difluorobenzene	8.968	114	932809	30.000	ug/l	0.00
57) Chlorobenzene-d5	11.747	117	792963	30.000	ug/l	0.00
System Monitoring Compounds						
27) 1,2-Dichloroethane-d4	8.437	65	471756	32.007	ug/l	0.00
Spiked Amount	30.000	Range 91 - 110	Recovery	=	106.700%	
60) 4-Bromofluorobenzene	12.734	95	305321	24.061	ug/l	0.00
Spiked Amount	30.000	Range 63 - 112	Recovery	=	80.200%	
63) Toluene-d8	10.443	98	1135152	31.004	ug/l	0.00
Spiked Amount	30.000	Range 91 - 112	Recovery	=	103.333%	
Target Compounds						
						Qvalue
3) Chloromethane	2.303	50	2718	0.208	ug/l	97
13) Acrolein	3.698	56	344	0.512	ug/l	88
18) Methylene Chloride	5.101	84	12505	1.156	ug/l	97
25) Chloroform	7.820	83	1278049	62.992	ug/l	98
33) Carbon Tetrachloride	7.815	117	13905	1.013	ug/l #	81
41) Bromodichloromethane	9.762	83	71728	4.975	ug/l	92
45) 1,4-Dioxane	9.263	88	53	0.219	ug/l #	31
77) t-1,4-Dichloro-2-butene	12.734	75	170020	41.770	ug/l #	8

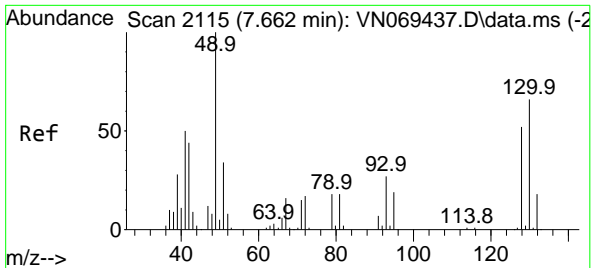
(#) = qualifier out of range (m) = manual integration (+) = signals summed

Data Path : Z:\voasrv\HPCHEM1\MSVOA_N\Data\VN112321\
 Data File : VN069630.D
 Acq On : 23 Nov 2021 16:48
 Operator : JC/MD
 Sample : M4820-04 5X
 Misc : 5.00mL/MSVOA_N/WATER
 ALS Vial : 11 Sample Multiplier: 1

Instrument :
 MSVOA_N
 ClientSampleId :

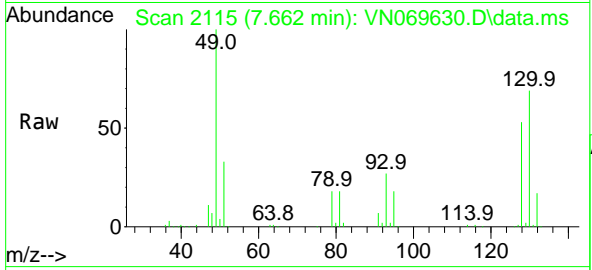
Quant Time: Nov 24 02:27:12 2021
 Quant Method : Z:\voasrv\HPCHEM1\MSVOA_N\methods\624N111021W.M
 Quant Title : METHOD 624 VOLATILE ORGANIC ANALYSIS
 QLast Update : Wed Nov 10 14:36:17 2021
 Response via : Initial Calibration





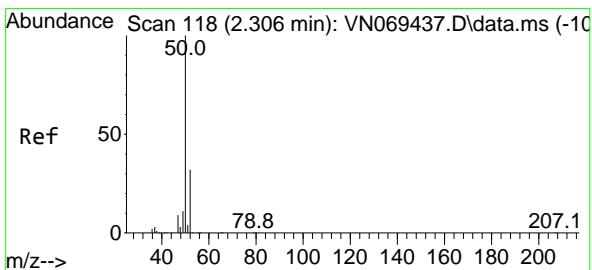
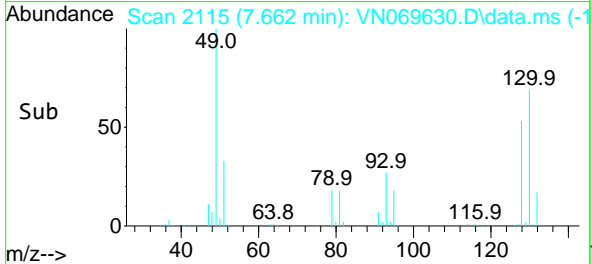
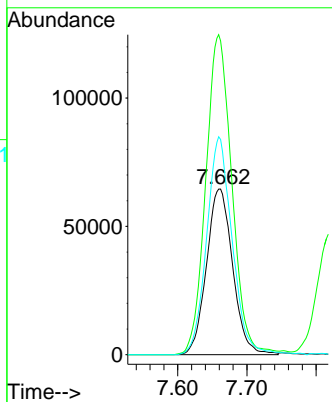
#1
 Bromochloromethane
 Concen: 30.000 ug/l
 RT: 7.662 min Scan# 2115
 Delta R.T. -0.000 min
 Lab File: VN069630.D
 Acq: 23 Nov 2021 16:48

Instrument :
 MSVOA_N
 ClientSampleId :



Tgt Ion:128 Resp: 169949

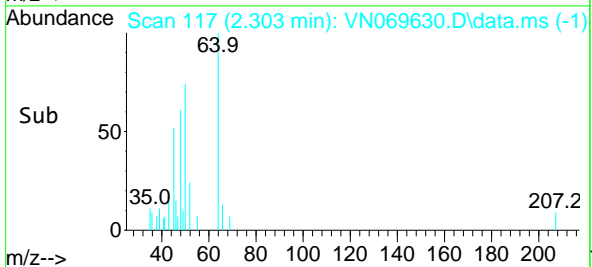
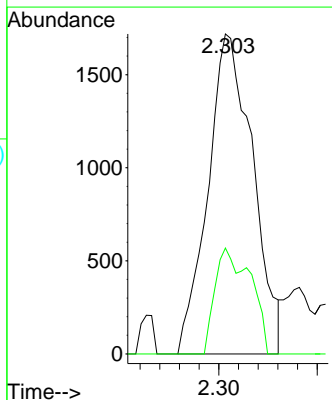
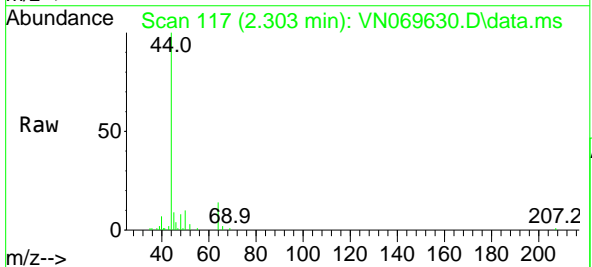
Ion	Ratio	Lower	Upper
128	100		
49	191.9	0.0	392.3
130	127.1	0.0	320.2

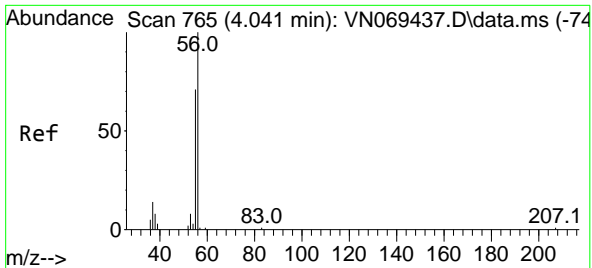


#3
 Chloromethane
 Concen: 0.208 ug/l
 RT: 2.303 min Scan# 117
 Delta R.T. 0.000 min
 Lab File: VN069630.D
 Acq: 23 Nov 2021 16:48

Tgt Ion: 50 Resp: 2718

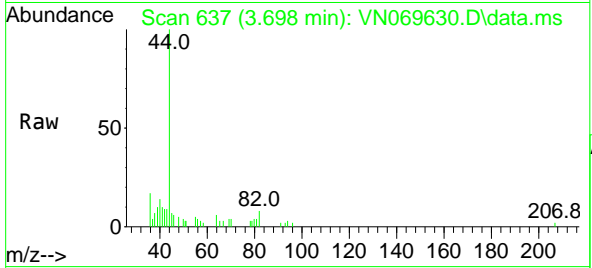
Ion	Ratio	Lower	Upper
50	100		
52	33.1	27.8	41.6



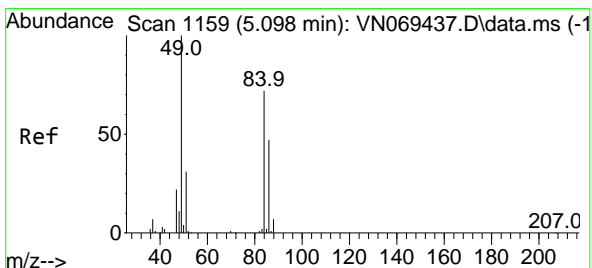
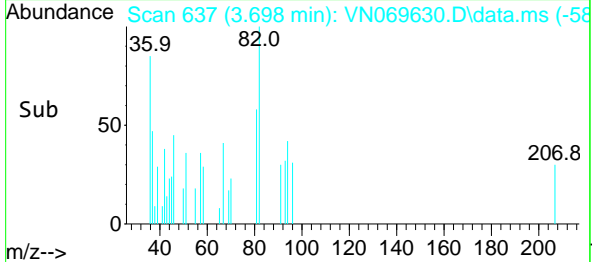
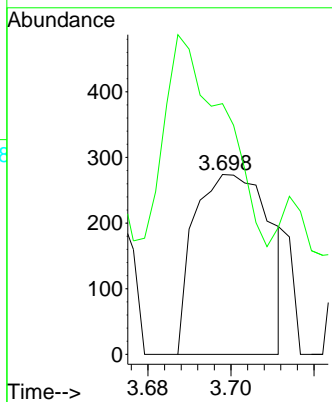


#13
 Acrolein
 Concen: 0.512 ug/l
 RT: 3.698 min Scan# 61
 Delta R.T. -0.349 min
 Lab File: VN069630.D
 Acq: 23 Nov 2021 16:48

Instrument :
 MSVOA_N
 ClientSampleId :

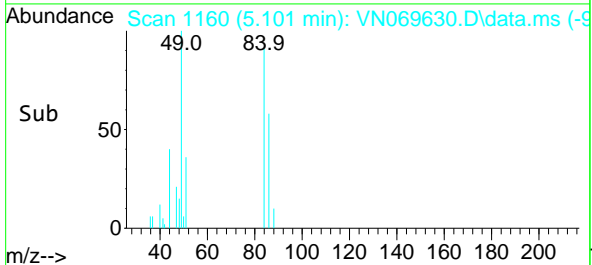
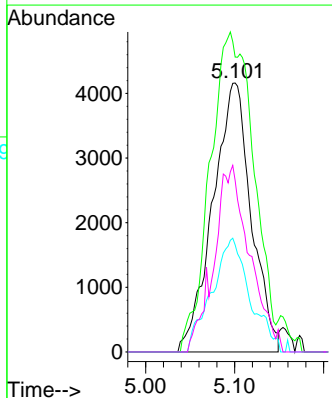
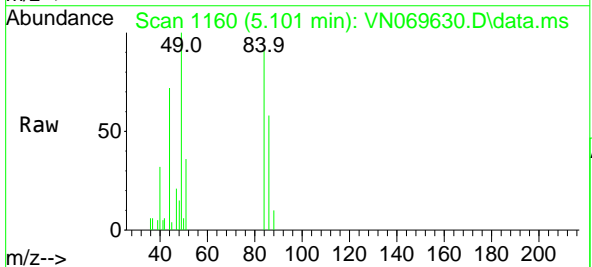


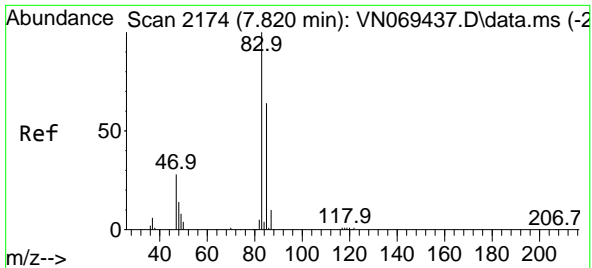
Tgt Ion: 56 Resp: 344
 Ion Ratio Lower Upper
 56 100
 55 61.6 57.6 86.4



#18
 Methylene Chloride
 Concen: 1.156 ug/l
 RT: 5.101 min Scan# 1160
 Delta R.T. 0.000 min
 Lab File: VN069630.D
 Acq: 23 Nov 2021 16:48

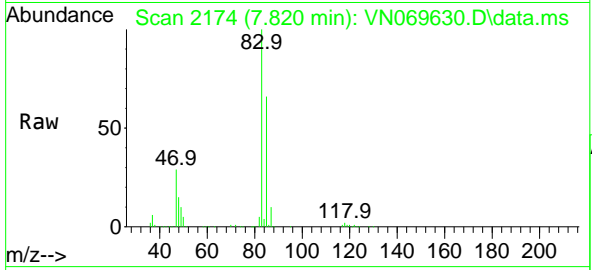
Tgt Ion: 84 Resp: 12505
 Ion Ratio Lower Upper
 84 100
 49 109.6 91.4 137.0
 51 39.8 29.4 44.0
 86 63.7 51.1 76.7



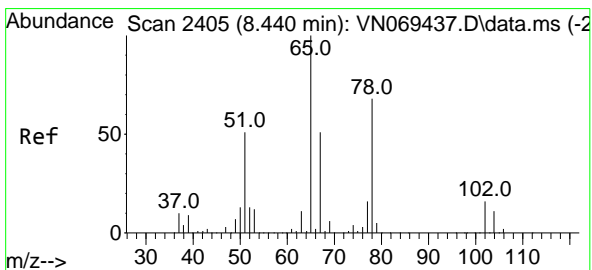
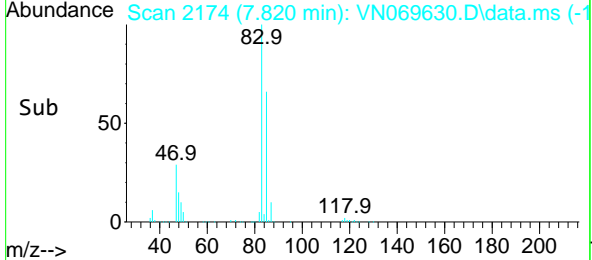
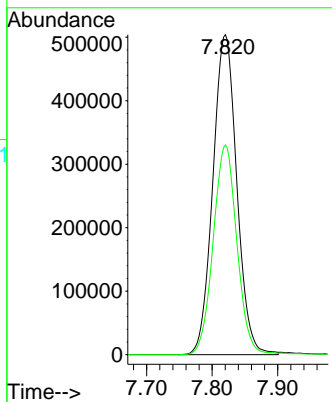


#25
 Chloroform
 Concen: 62.992 ug/l
 RT: 7.820 min Scan# 2174
 Delta R.T. 0.000 min
 Lab File: VN069630.D
 Acq: 23 Nov 2021 16:48

Instrument : MSVOA_N
 ClientSampleId :

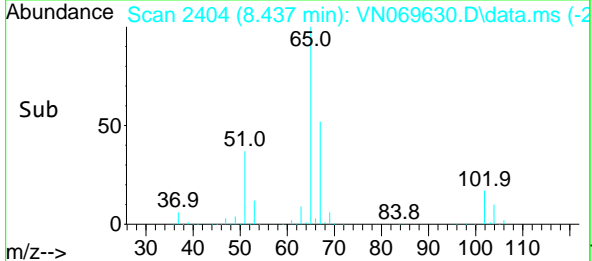
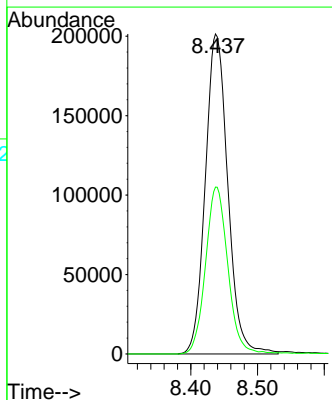
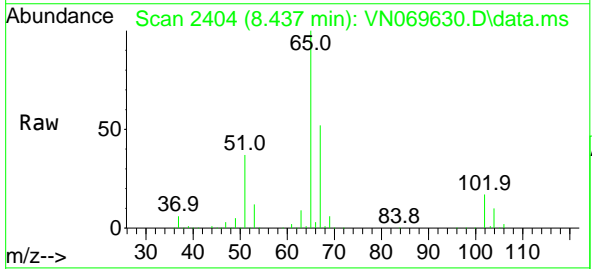


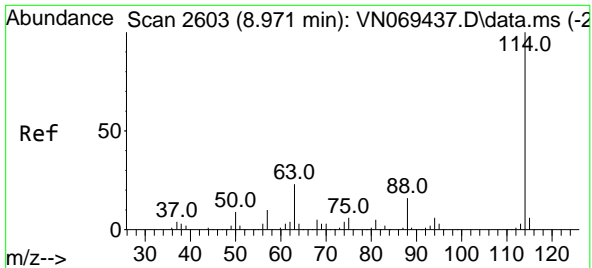
Tgt Ion: 83 Resp: 1278049
 Ion Ratio Lower Upper
 83 100
 85 65.6 51.3 76.9



#27
 1,2-Dichloroethane-d4
 Concen: 32.007 ug/l
 RT: 8.437 min Scan# 2404
 Delta R.T. -0.003 min
 Lab File: VN069630.D
 Acq: 23 Nov 2021 16:48

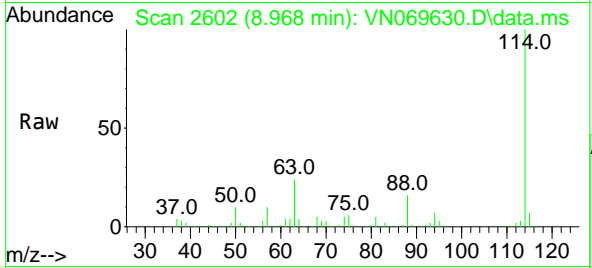
Tgt Ion: 65 Resp: 471756
 Ion Ratio Lower Upper
 65 100
 67 51.3 40.2 60.2





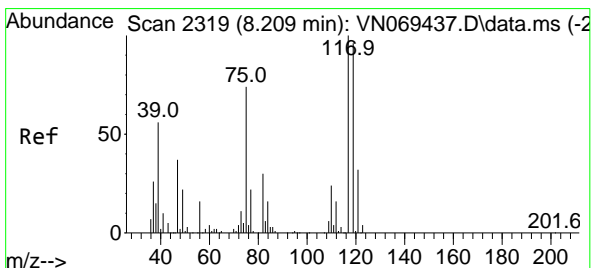
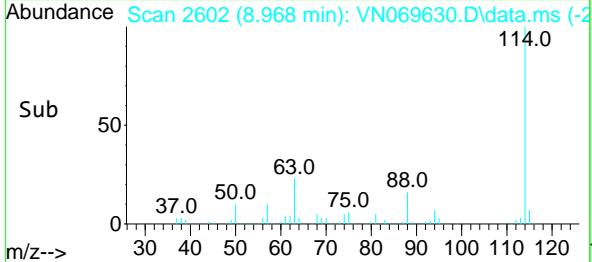
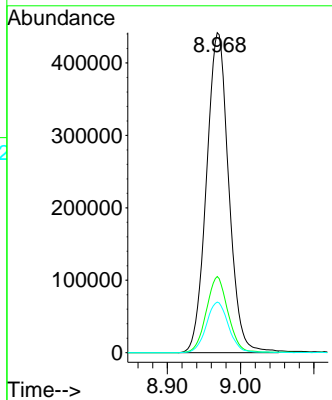
#28
 1,4-Difluorobenzene
 Concen: 30.000 ug/l
 RT: 8.968 min Scan# 2172
 Delta R.T. -0.003 min
 Lab File: VN069630.D
 Acq: 23 Nov 2021 16:48

Instrument : MSVOA_N
 ClientSampleId :



Tgt Ion:114 Resp: 932809

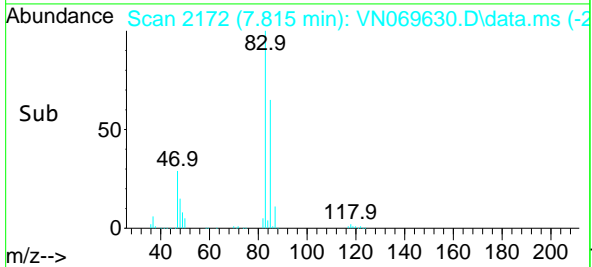
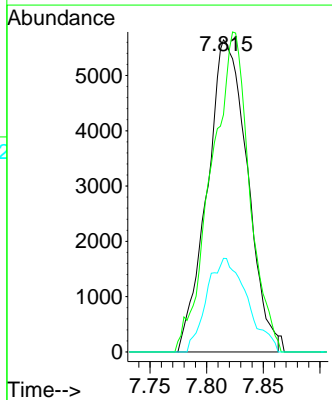
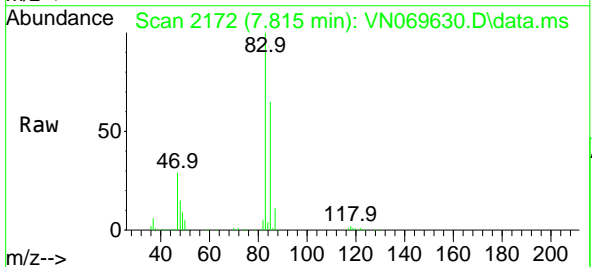
Ion	Ratio	Lower	Upper
114	100		
63	23.0	15.8	23.6
88	15.7	11.6	17.4

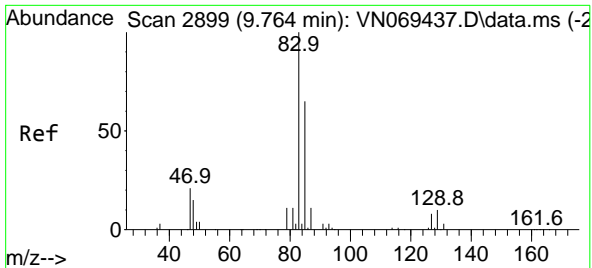


#33
 Carbon Tetrachloride
 Concen: 1.013 ug/l
 RT: 7.815 min Scan# 2172
 Delta R.T. -0.394 min
 Lab File: VN069630.D
 Acq: 23 Nov 2021 16:48

Tgt Ion:117 Resp: 13905

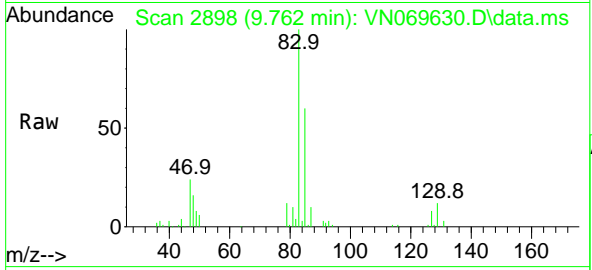
Ion	Ratio	Lower	Upper
117	100		
119	72.6	77.5	116.3#
121	30.0	23.5	35.3





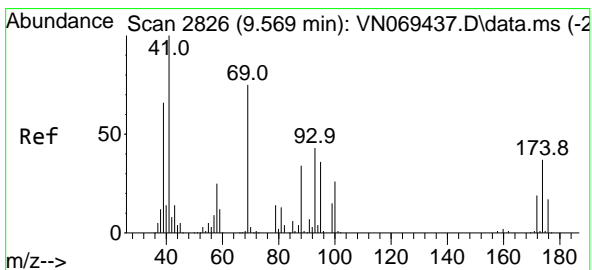
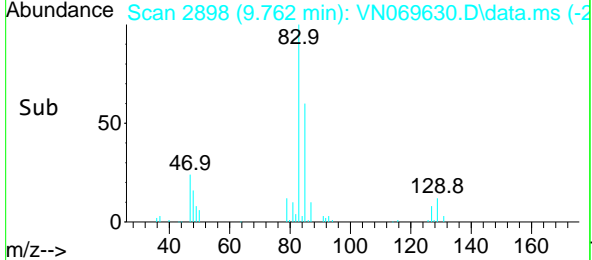
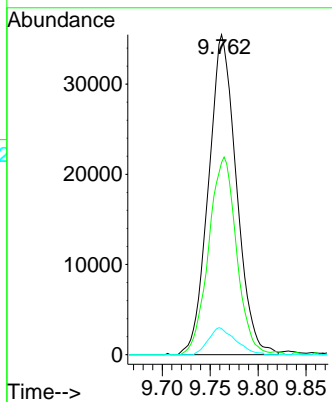
#41
 Bromodichloromethane
 Concen: 4.975 ug/l
 RT: 9.762 min Scan# 2712
 Delta R.T. -0.003 min
 Lab File: VN069630.D
 Acq: 23 Nov 2021 16:48

Instrument : MSVOA_N
 ClientSampleId :



Tgt Ion: 83 Resp: 71728

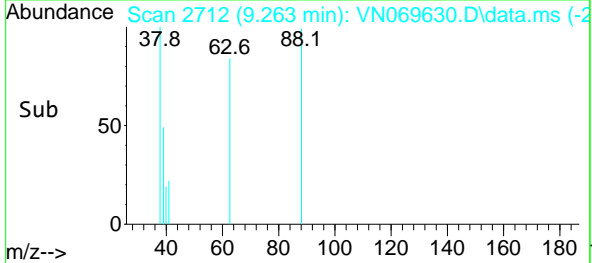
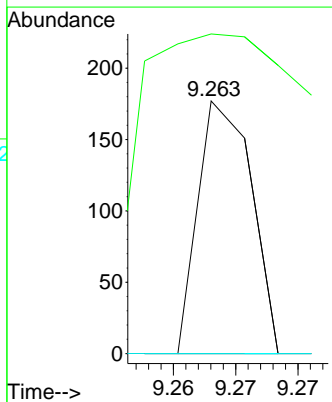
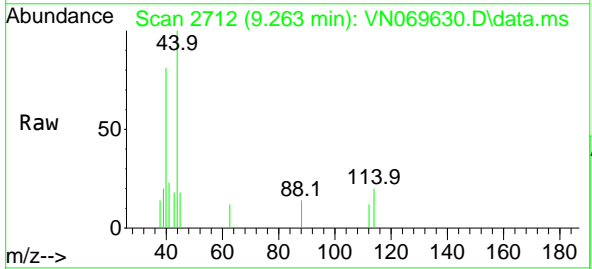
Ion	Ratio	Lower	Upper
83	100		
85	60.0	54.1	81.1
127	9.0	7.6	11.4

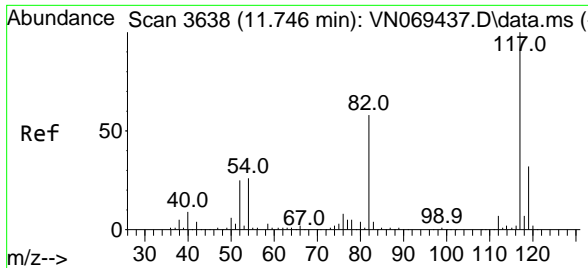


#45
 1,4-Dioxane
 Concen: 0.219 ug/l
 RT: 9.263 min Scan# 2712
 Delta R.T. -0.306 min
 Lab File: VN069630.D
 Acq: 23 Nov 2021 16:48

Tgt Ion: 88 Resp: 53

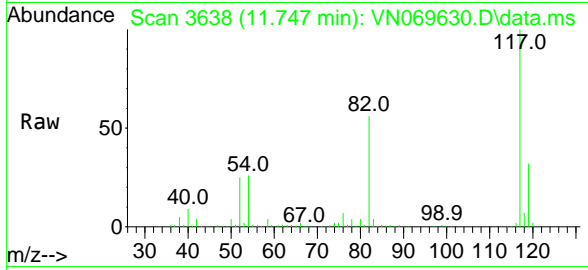
Ion	Ratio	Lower	Upper
88	100		
43	56.6	25.0	37.6#
58	0.0	49.4	74.2#





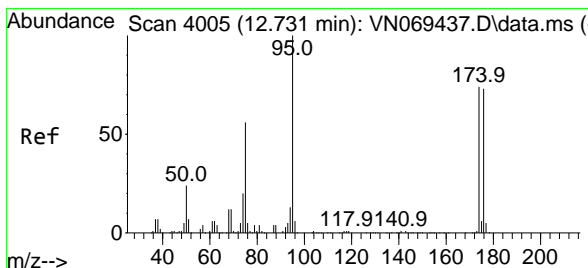
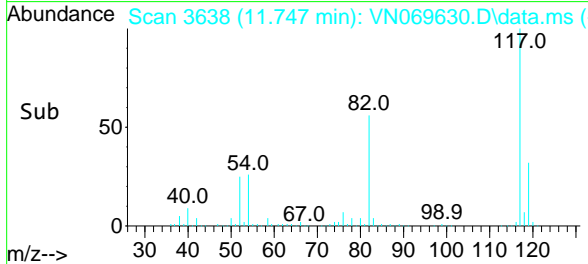
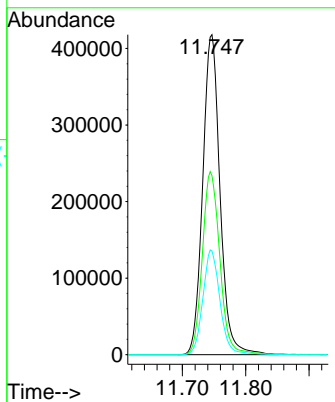
#57
 Chlorobenzene-d5
 Concen: 30.000 ug/l
 RT: 11.747 min Scan# 30
 Delta R.T. 0.000 min
 Lab File: VN069630.D
 Acq: 23 Nov 2021 16:48

Instrument :
 MSVOA_N
 ClientSampleId :



Tgt Ion:117 Resp: 792963

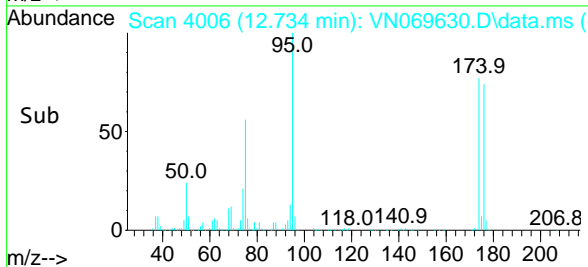
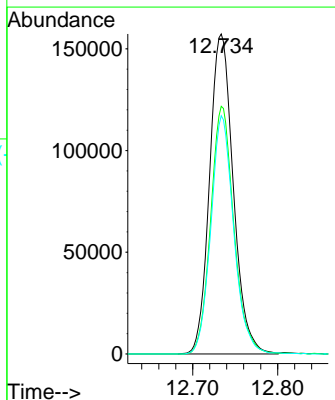
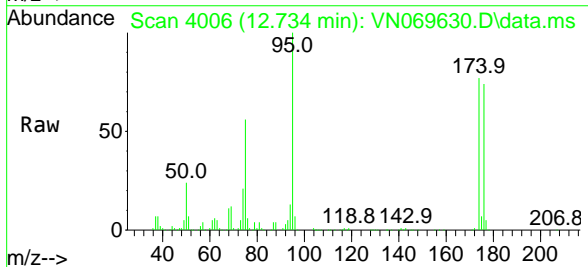
Ion	Ratio	Lower	Upper
117	100		
82	58.0	43.6	65.4
119	32.5	25.8	38.6

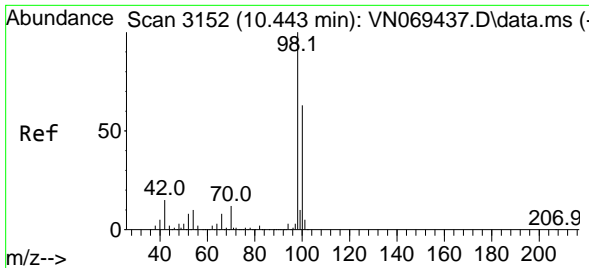


#60
 4-Bromofluorobenzene
 Concen: 24.061 ug/l
 RT: 12.734 min Scan# 4006
 Delta R.T. 0.000 min
 Lab File: VN069630.D
 Acq: 23 Nov 2021 16:48

Tgt Ion: 95 Resp: 305321

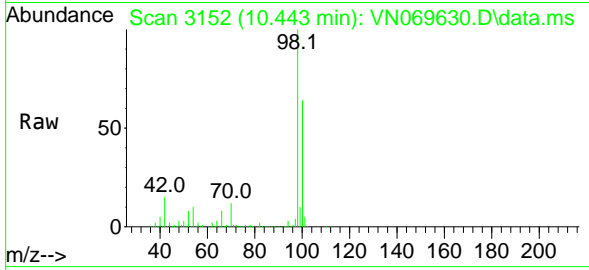
Ion	Ratio	Lower	Upper
95	100		
174	75.7	62.9	94.3
176	71.7	61.0	91.4



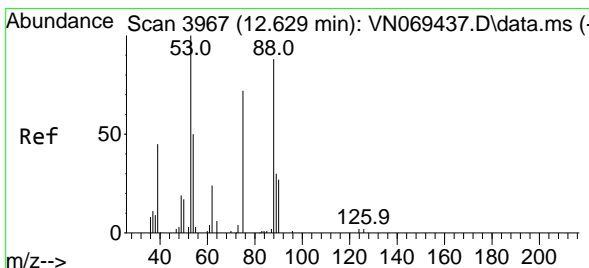
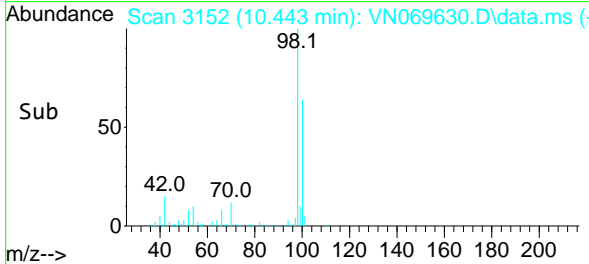
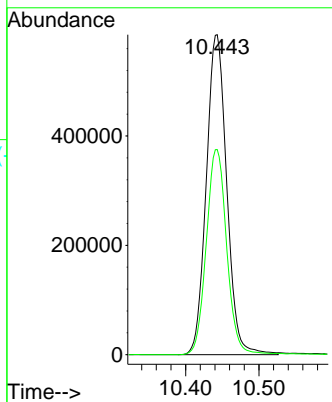


#63
 Toluene-d8
 Concen: 31.004 ug/l
 RT: 10.443 min Scan# 3152
 Delta R.T. 0.000 min
 Lab File: VN069630.D
 Acq: 23 Nov 2021 16:48

Instrument : MSVOA_N
 ClientSampleId :



Tgt Ion: 98 Resp: 1135152
 Ion Ratio Lower Upper
 98 100
 100 63.9 50.6 76.0



#77
 t-1,4-Dichloro-2-butene
 Concen: 41.770 ug/l
 RT: 12.734 min Scan# 4006
 Delta R.T. 0.105 min
 Lab File: VN069630.D
 Acq: 23 Nov 2021 16:48

Tgt Ion: 75 Resp: 170020
 Ion Ratio Lower Upper
 75 100
 53 0.2 51.8 155.5#
 89 0.0 22.9 68.7#

