

Data Path : Z:\VOASRV\HPCHEM1\MSVOA N\DATA\VN112420\  
 Data File : VN064828.D  
 Acq On : 24 Nov 2020 23:05  
 Operator : JC/MD  
 Sample : L4798-01DL 5X  
 Misc : 5.00mL/MSVOA N/WATER  
 ALS Vial : 34 Sample Multiplier: 1

Instrument :  
 MSVOA\_N  
 ClientSampleId :  
 08BR-20201118DL

Quant Time: Nov 25 06:17:42 2020  
 Quant Method : Z:\VOASRV\HPCHEM1\MSVOA\_N\METHODS\82N112320W.M  
 Quant Title : SW846 8260  
 QLast Update : Mon Nov 23 13:54:12 2020  
 Response via : Initial Calibration

Internal Standards	R.T.	QIon	Response	Conc	Units	Dev(Min)
1) Pentafluorobenzene	7.63	168	167864	50.00	ug/l	0.00
34) 1,4-Difluorobenzene	8.55	114	294550	50.00	ug/l	0.00
63) Chlorobenzene-d5	11.38	117	304532	50.00	ug/l	0.00
72) 1,4-Dichlorobenzene-d4	13.32	152	139021	50.00	ug/l	0.00

## System Monitoring Compounds

33) 1,2-Dichloroethane-d4	7.99	65	101470	52.00	ug/l	0.00
Spiked Amount	50.000	Range	61 - 141	Recovery	=	104.00%
35) Dibromofluoromethane	7.55	113	94528	53.63	ug/l	0.00
Spiked Amount	50.000	Range	69 - 133	Recovery	=	107.26%
50) Toluene-d8	10.06	98	370093	51.39	ug/l	0.00
Spiked Amount	50.000	Range	65 - 126	Recovery	=	102.78%
62) 4-Bromofluorobenzene	12.38	95	144434	56.04	ug/l	0.00
Spiked Amount	50.000	Range	58 - 135	Recovery	=	112.08%

## Target Compounds

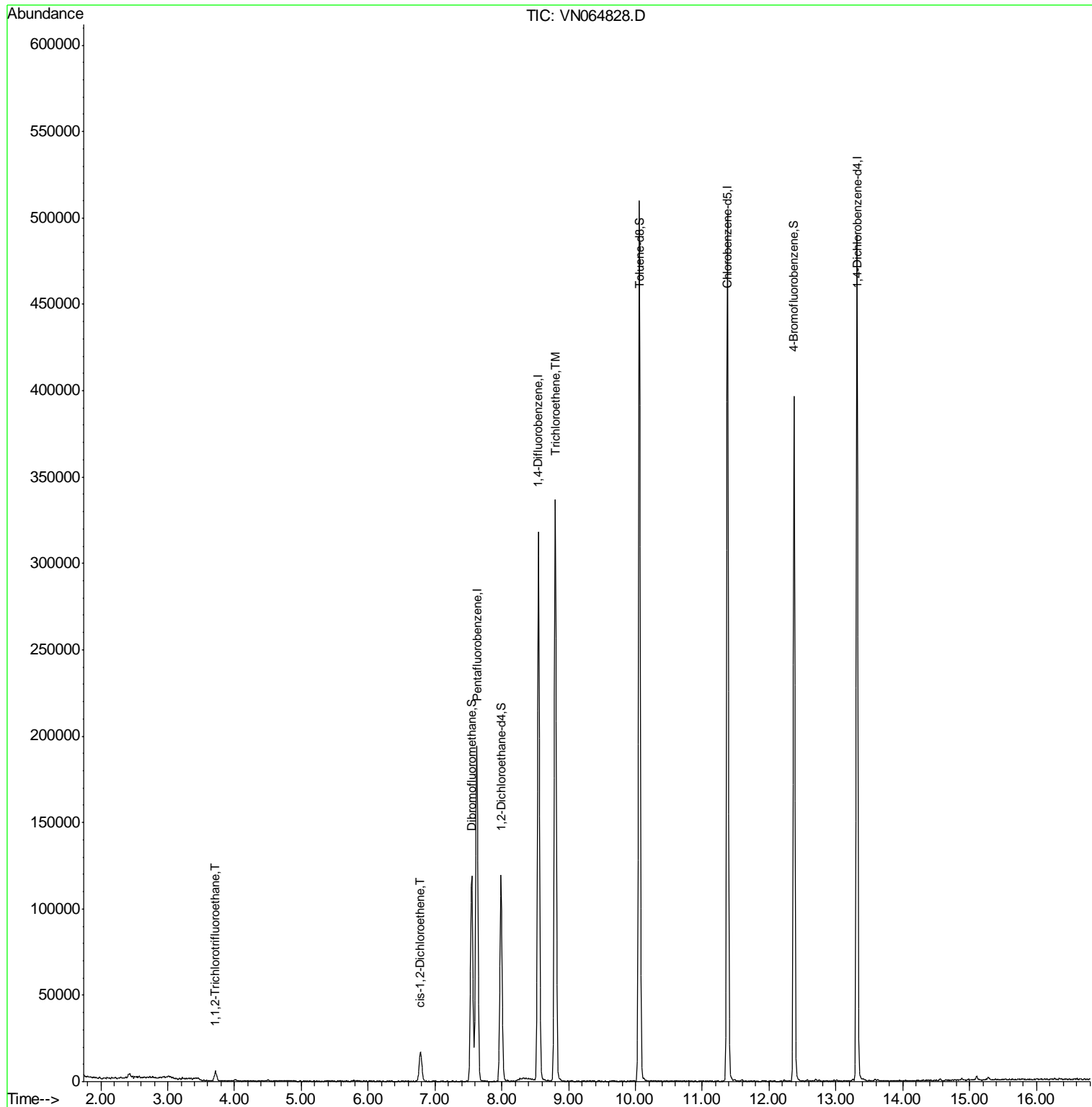
					Qvalue
9) 1,1,2-Trichlorotrifluoroet	3.71	101	3337	2.042	ug/l 98
27) cis-1,2-Dichloroethene	6.78	96	10221	5.025	ug/l 90
44) Trichloroethene	8.80	130	132426	53.647	ug/l 96

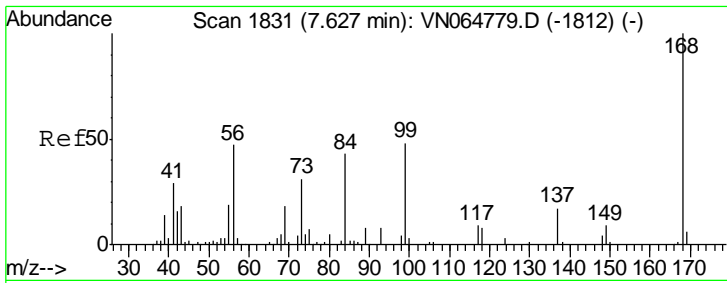
(#) = qualifier out of range (m) = manual integration (+) = signals summed

Data Path : Z:\VOASRV\HPCHEM1\MSVOA N\DATA\VN112420\  
 Data File : VN064828.D  
 Acq On : 24 Nov 2020 23:05  
 Operator : JC/MD  
 Sample : L4798-01DL 5X  
 Misc : 5.00mL/MSVOA N/WATER  
 ALS Vial : 34 Sample Multiplier: 1

Instrument :  
 MSVOA\_N  
 ClientSampled :  
 08BR-20201118DL

Quant Time: Nov 25 06:17:42 2020  
 Quant Method : Z:\VOASRV\HPCHEM1\MSVOA\_N\METHODS\82N112320W.M  
 Quant Title : SW846 8260  
 QLast Update : Mon Nov 23 13:54:12 2020  
 Response via : Initial Calibration

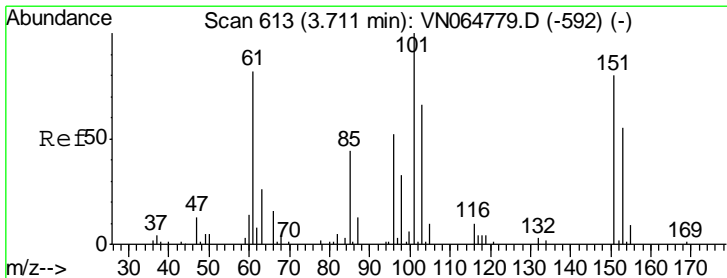
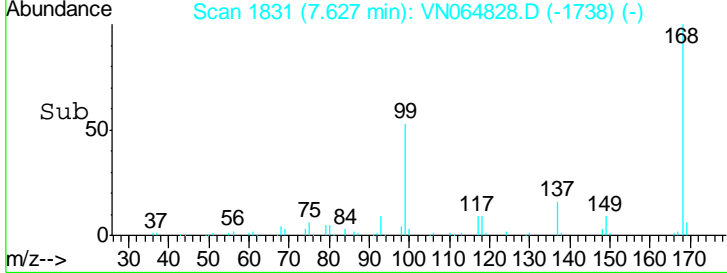
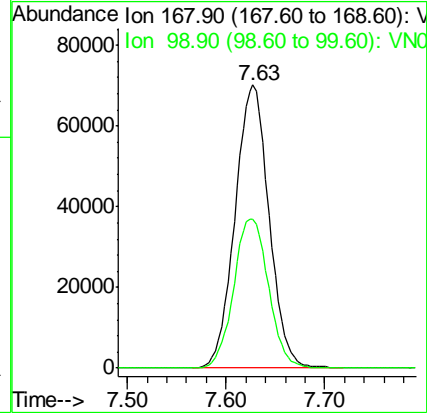
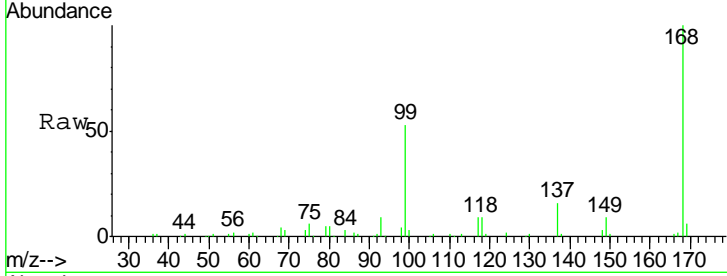




#1  
 Pentafluorobenzene  
 Concen: 50.000 ug/l  
 RT: 7.63 min Scan# 1831  
 Delta R.T. 0.00 min  
 Lab File: VN064828.D  
 Acq: 24 Nov 2020 23:05

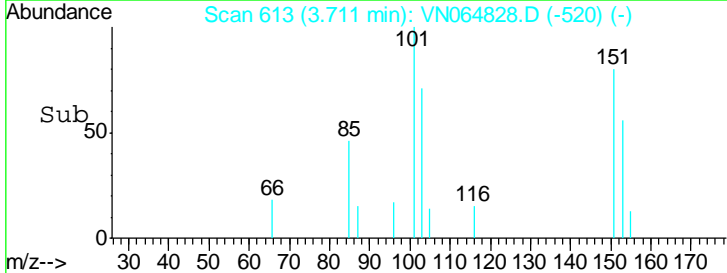
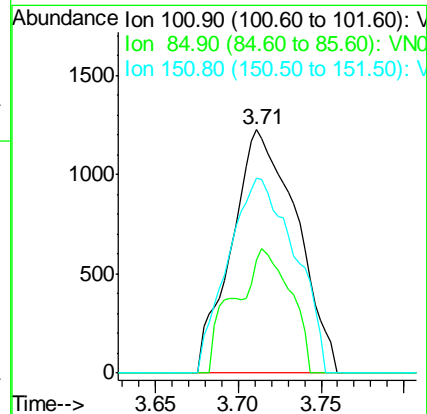
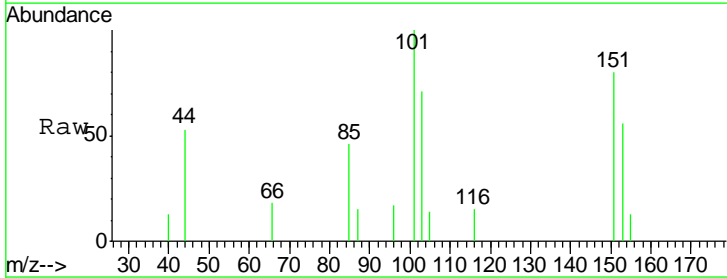
Instrument :  
 MSVOA\_N  
 ClientSampled :  
 08BR-20201118DL

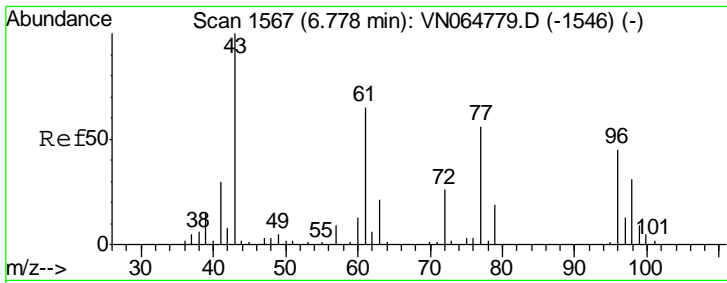
Tgt Ion: 168 Resp: 167864  
 Ion Ratio Lower Upper  
 168 100  
 99 52.6 43.0 64.4



#9  
 1,1,2-Trichlorotrifluoroethane  
 Concen: 2.042 ug/l  
 RT: 3.71 min Scan# 613  
 Delta R.T. 0.00 min  
 Lab File: VN064828.D  
 Acq: 24 Nov 2020 23:05

Tgt Ion: 101 Resp: 3337  
 Ion Ratio Lower Upper  
 101 100  
 85 43.8 34.4 51.6  
 151 82.4 64.0 96.0

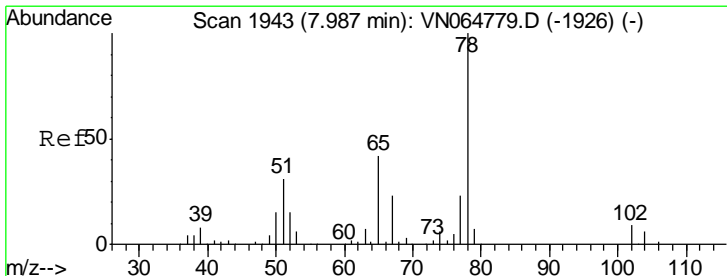
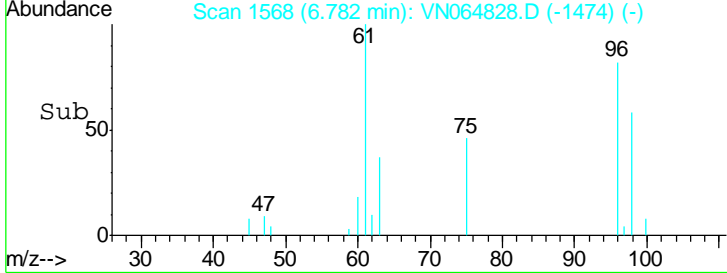
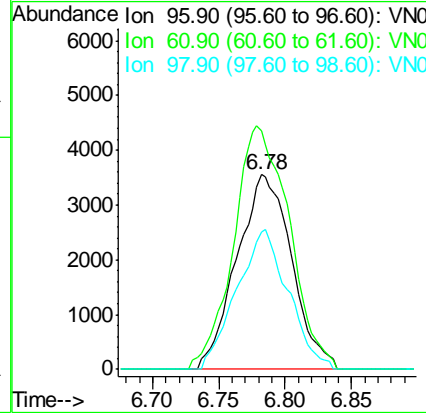
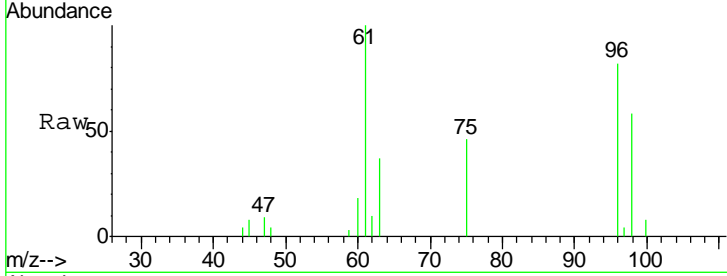




#27  
 cis-1,2-Dichloroethene  
 Concen: 5.025 ug/l  
 RT: 6.78 min Scan# 1568  
 Delta R.T. 0.00 min  
 Lab File: VN064828.D  
 Acq: 24 Nov 2020 23:05

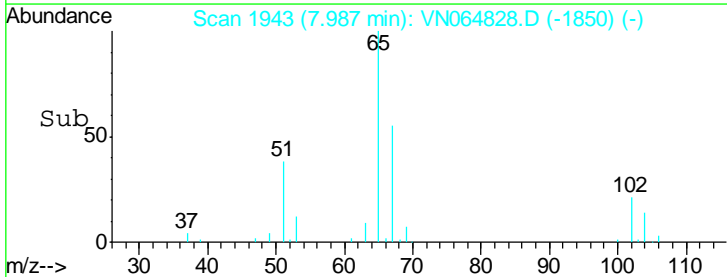
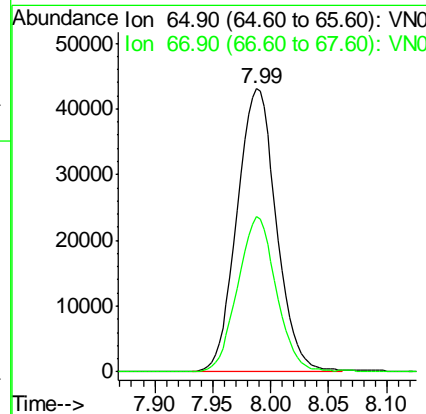
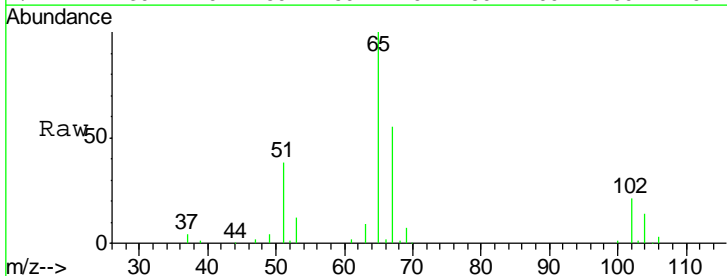
Instrument : MSVOA\_N  
 ClientSampleId : 08BR-2020118DL

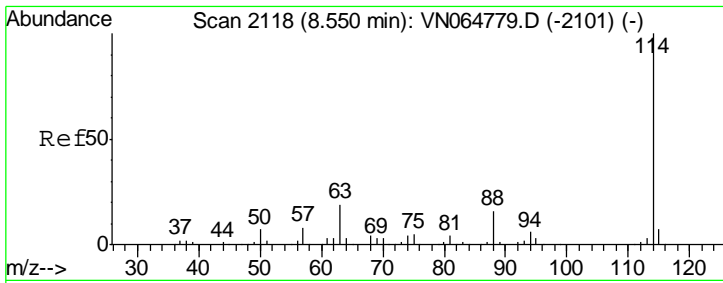
Tgt Ion	Resp	Lower	Upper
96	10221		
61	127.0	0.0	285.8
98	67.6	0.0	130.6



#33  
 1,2-Dichloroethane-d4  
 Concen: 51.995 ug/l  
 RT: 7.99 min Scan# 1943  
 Delta R.T. 0.00 min  
 Lab File: VN064828.D  
 Acq: 24 Nov 2020 23:05

Tgt Ion	Resp	Lower	Upper
65	101470		
67	53.7	0.0	108.2

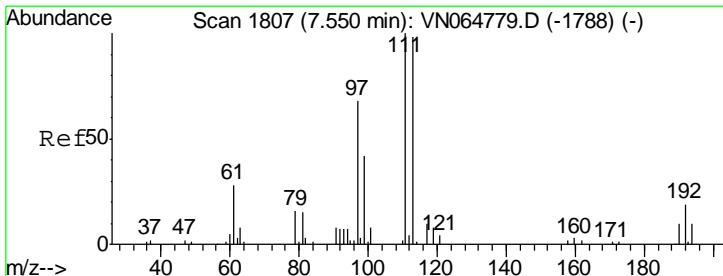
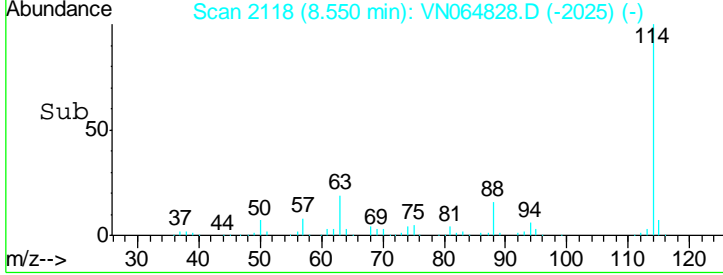
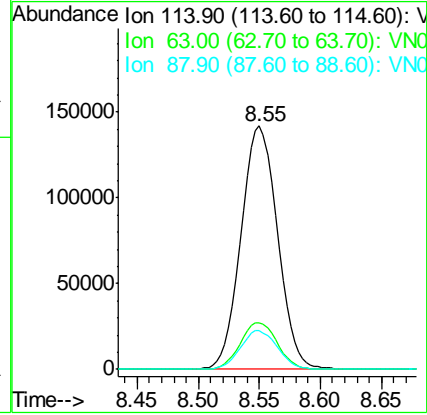
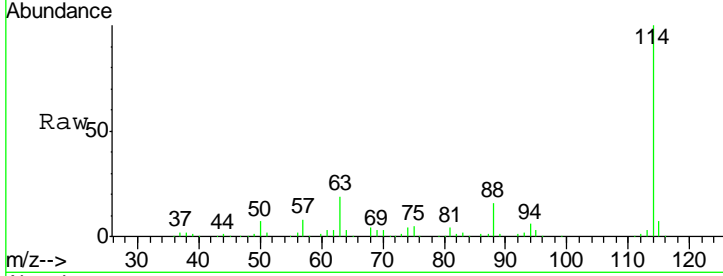




#34  
 1,4-Difluorobenzene  
 Concen: 50.000 ug/l  
 RT: 8.55 min Scan# 2118  
 Delta R.T. 0.00 min  
 Lab File: VN064828.D  
 Acq: 24 Nov 2020 23:05

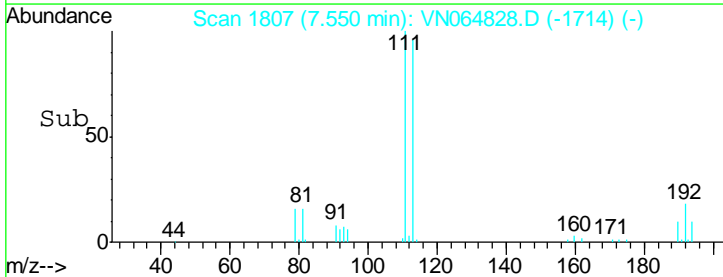
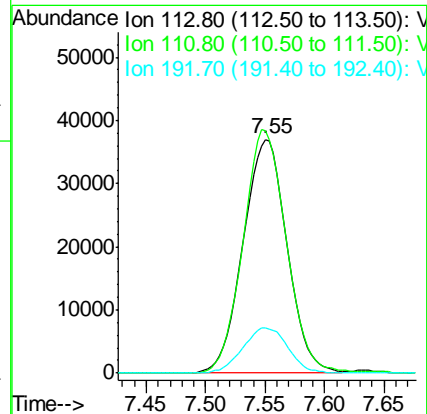
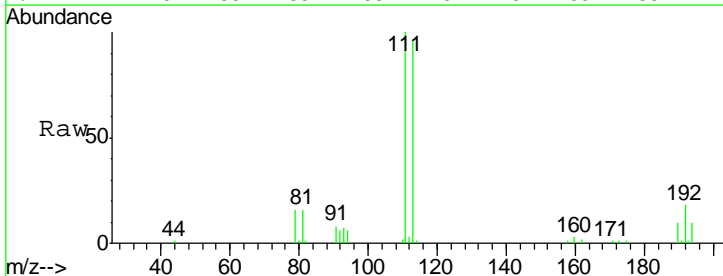
Instrument : MSVOA\_N  
 ClientSampleID : 08BR-2020118DL

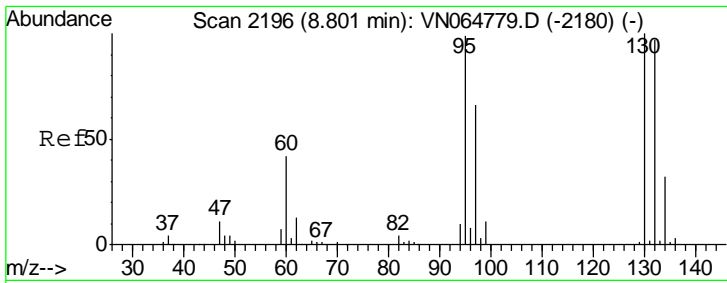
Tgt Ion	Resp	Lower	Upper
114	294550		
63	19.2	0.0	38.6
88	15.8	0.0	32.6



#35  
 Dibromofluoromethane  
 Concen: 53.633 ug/l  
 RT: 7.55 min Scan# 1807  
 Delta R.T. 0.00 min  
 Lab File: VN064828.D  
 Acq: 24 Nov 2020 23:05

Tgt Ion	Resp	Lower	Upper
113	94528		
111	102.7	81.6	122.4
192	19.7	16.2	24.2

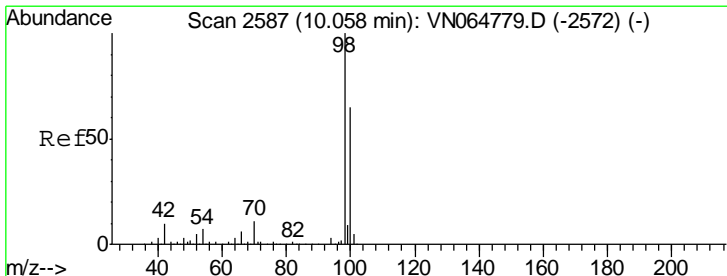
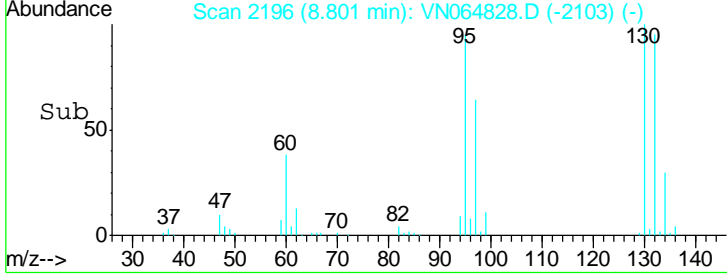
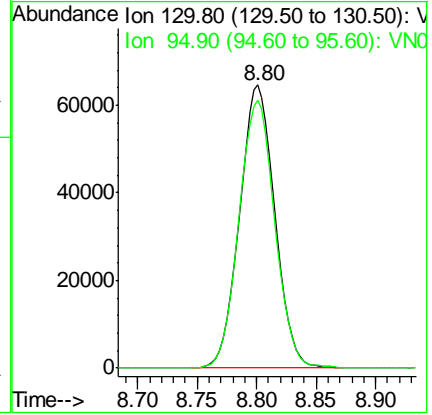
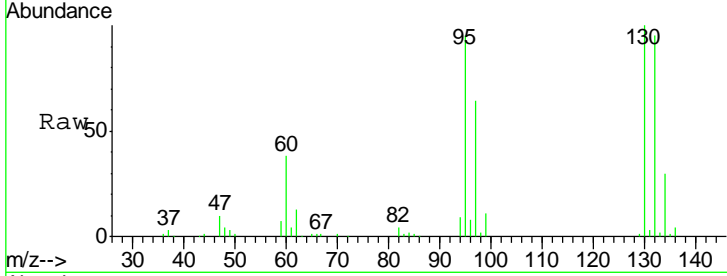




#44  
 Trichloroethene  
 Concen: 53.647 ug/l  
 RT: 8.80 min Scan# 2196  
 Delta R.T. 0.00 min  
 Lab File: VN064828.D  
 Acq: 24 Nov 2020 23:05

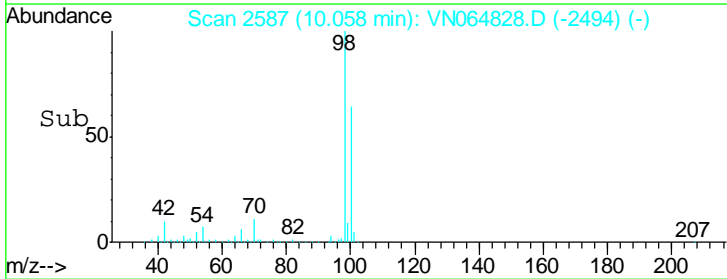
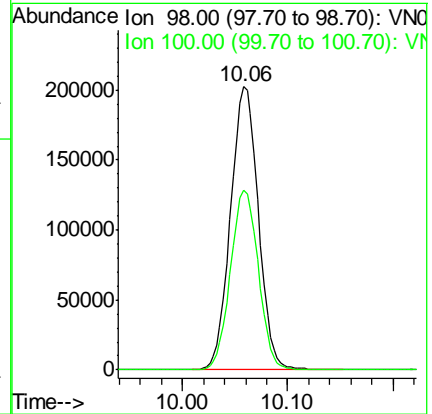
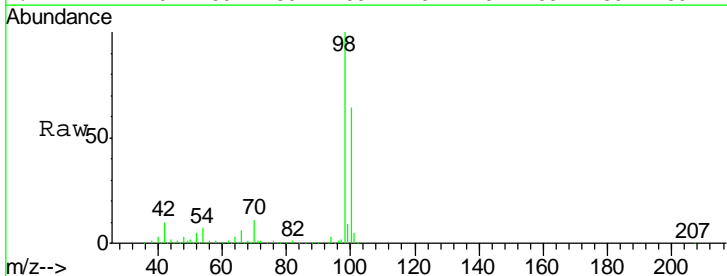
Instrument :  
 MSVOA\_N  
 ClientSampled :  
 08BR-2020118DL

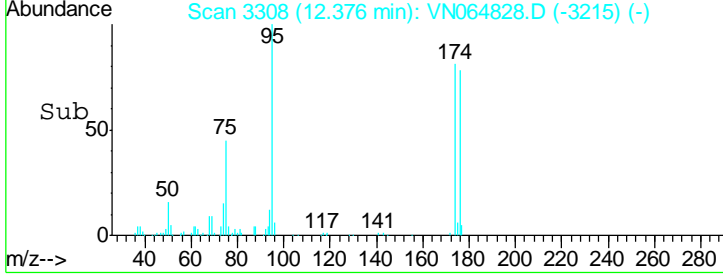
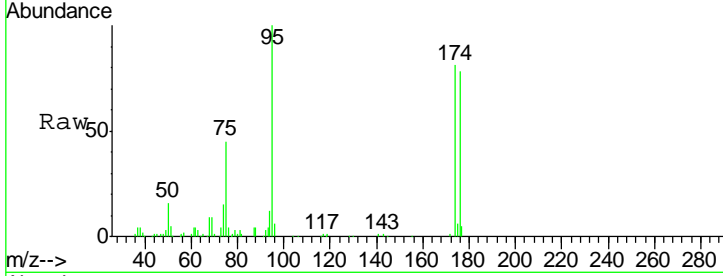
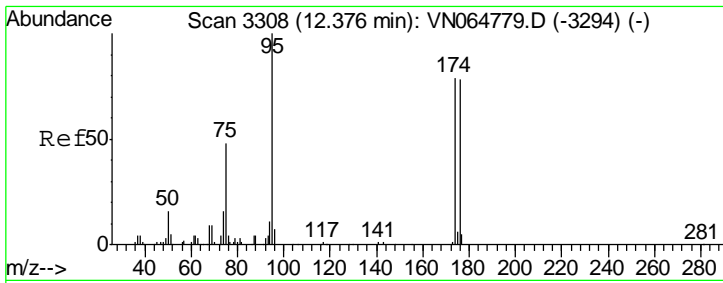
Tgt Ion: 130 Resp: 132426  
 Ion Ratio Lower Upper  
 130 100  
 95 94.7 0.0 197.8



#50  
 Toluene-d8  
 Concen: 51.392 ug/l  
 RT: 10.06 min Scan# 2587  
 Delta R.T. 0.00 min  
 Lab File: VN064828.D  
 Acq: 24 Nov 2020 23:05

Tgt Ion: 98 Resp: 370093  
 Ion Ratio Lower Upper  
 98 100  
 100 63.9 51.7 77.5

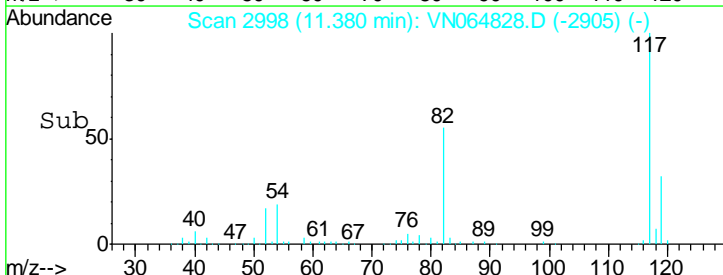
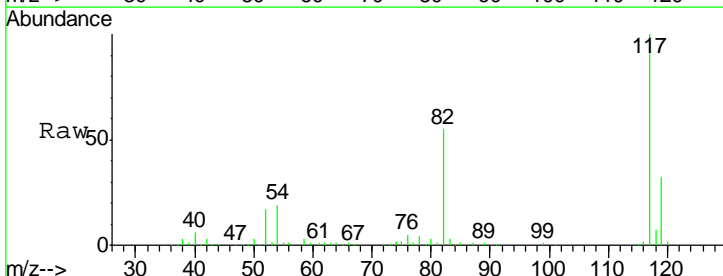
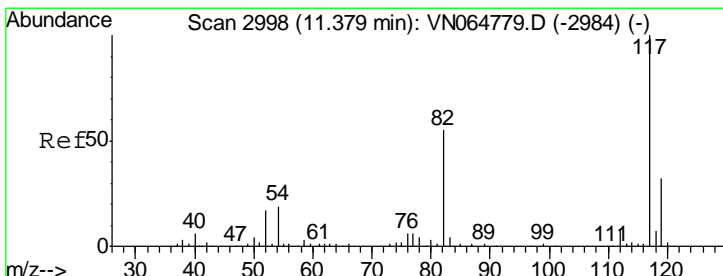
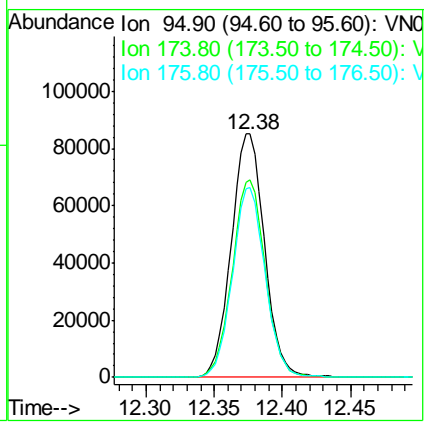




#62  
 4-Bromofluorobenzene  
 Concen: 56.042 ug/l  
 RT: 12.38 min Scan# 3308  
 Delta R.T. 0.00 min  
 Lab File: VN064828.D  
 Acq: 24 Nov 2020 23:05

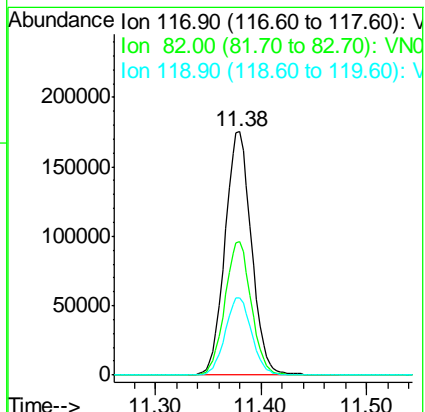
Instrument : MSVOA\_N  
 ClientSampled : 08BR-2020118DL

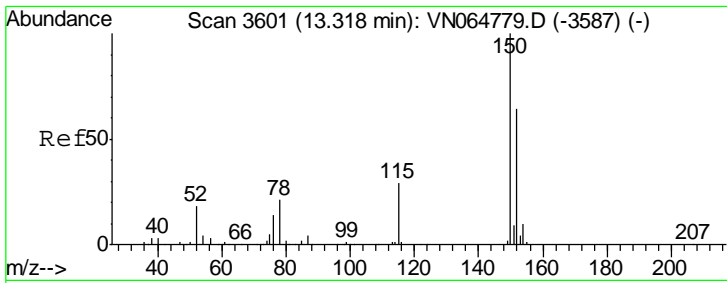
Tgt Ion	Resp	Lower	Upper
95	144434		
174	80.6	0.0	160.4
176	76.7	0.0	158.4



#63  
 Chlorobenzene-d5  
 Concen: 50.000 ug/l  
 RT: 11.38 min Scan# 2998  
 Delta R.T. 0.00 min  
 Lab File: VN064828.D  
 Acq: 24 Nov 2020 23:05

Tgt Ion	Resp	Lower	Upper
117	304532		
82	54.7	44.2	66.2
119	31.9	25.8	38.6





#72  
 1,4-Dichlorobenzene-d4  
 Concen: 50.000 ug/l  
 RT: 13.32 min Scan# 3600  
 Delta R.T. -0.00 min  
 Lab File: VN064828.D  
 Acq: 24 Nov 2020 23:05

Instrument : MSVOA\_N  
 ClientSampled : 08BR-2020118DL

Tot Ion	Resp	Lower	Upper
152	139021		
115	58.2	29.7	89.1
150	155.7	0.0	350.6

