

Data Path : Z:\voasrv\HPCHEM1\MSVOA_N\Data\VN112624\
 Data File : VN085036.D
 Acq On : 26 Nov 2024 11:21
 Operator : JC\MD
 Sample : VN1126MBL01
 Misc : 5.00g/10mL/100uL/5.00mL/MSVOA_N/MEOH
 ALS Vial : 3 Sample Multiplier: 1

Instrument :
 MSVOA_N
 ClientSampleId :
 VN1126MBL01

Integration Parameters: RTEINT.P

Integrator: RTE
 Smoothing : ON Filtering: 5
 Sampling : 1 Min Area: 3 % of largest Peak
 Start Thrs: 0.2 Max Peaks: 100
 Stop Thrs : 0 Peak Location: TOP

If leading or trailing edge < 100 prefer < Baseline drop else tangent >
 Peak separation: 5

Method : Z:\voasrv\HPCHEM1\MSVOA_N\methods\82N112224W.M
 Title : SW846 8260

Signal : TIC: VN085036.D\data.ms

peak #	R.T. min	first scan	max scan	last scan	PK TY	peak height	corr. area	corr. % max.	% of total
1	2.289	47	57	65	rBV3	11652	29926	3.74%	0.658%
2	2.865	141	155	156	rBV7	13919	38276	4.79%	0.841%
3	8.165	1046	1056	1060	rBV	126314	298310	37.32%	6.556%
4	8.218	1060	1065	1078	rVB	212884	467254	58.45%	10.269%
5	8.577	1116	1126	1137	rBV	137657	304851	38.13%	6.700%
6	9.100	1206	1215	1225	rBV	304981	624984	78.18%	13.736%
7	10.565	1456	1464	1472	rBV	439205	799434	100.00%	17.570%
8	11.865	1677	1685	1697	rBV	394369	703116	87.95%	15.453%
9	12.071	1714	1720	1728	rBV2	6061	11067	1.38%	0.243%
10	12.406	1771	1777	1783	rVB3	6745	11196	1.40%	0.246%
11	12.847	1845	1852	1861	rVB	302602	504134	63.06%	11.080%
12	12.976	1869	1874	1880	rVV5	7284	12915	1.62%	0.284%
13	13.035	1880	1884	1889	rVB	6171	9125	1.14%	0.201%
14	13.223	1911	1916	1923	rVB2	9023	14542	1.82%	0.320%
15	13.729	1997	2002	2006	rBV2	14125	23361	2.92%	0.513%
16	13.788	2006	2012	2026	rVB	337267	602426	75.36%	13.240%
17	14.053	2051	2057	2061	rBV2	10506	14452	1.81%	0.318%
18	14.106	2061	2066	2071	rVB2	7917	13157	1.65%	0.289%
19	15.394	2280	2285	2291	rBB2	10562	18078	2.26%	0.397%
20	15.500	2298	2303	2307	rVB3	7045	10411	1.30%	0.229%
21	15.641	2319	2327	2332	rBV2	10298	20738	2.59%	0.456%
22	15.835	2355	2360	2367	rVB5	9003	18305	2.29%	0.402%

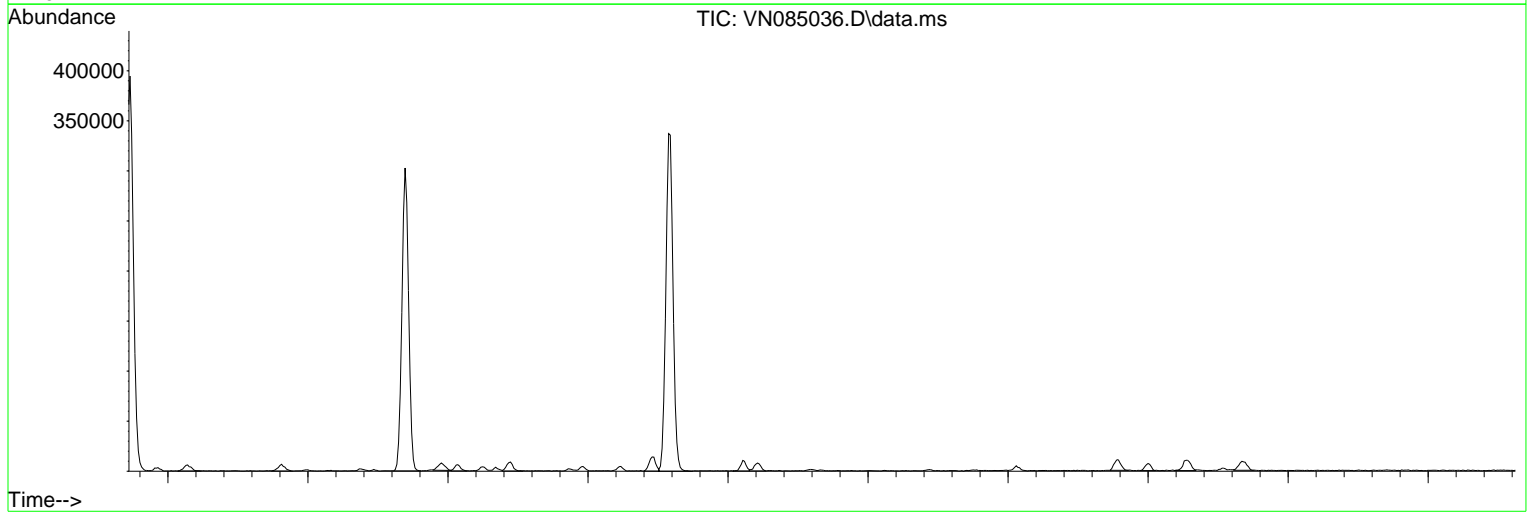
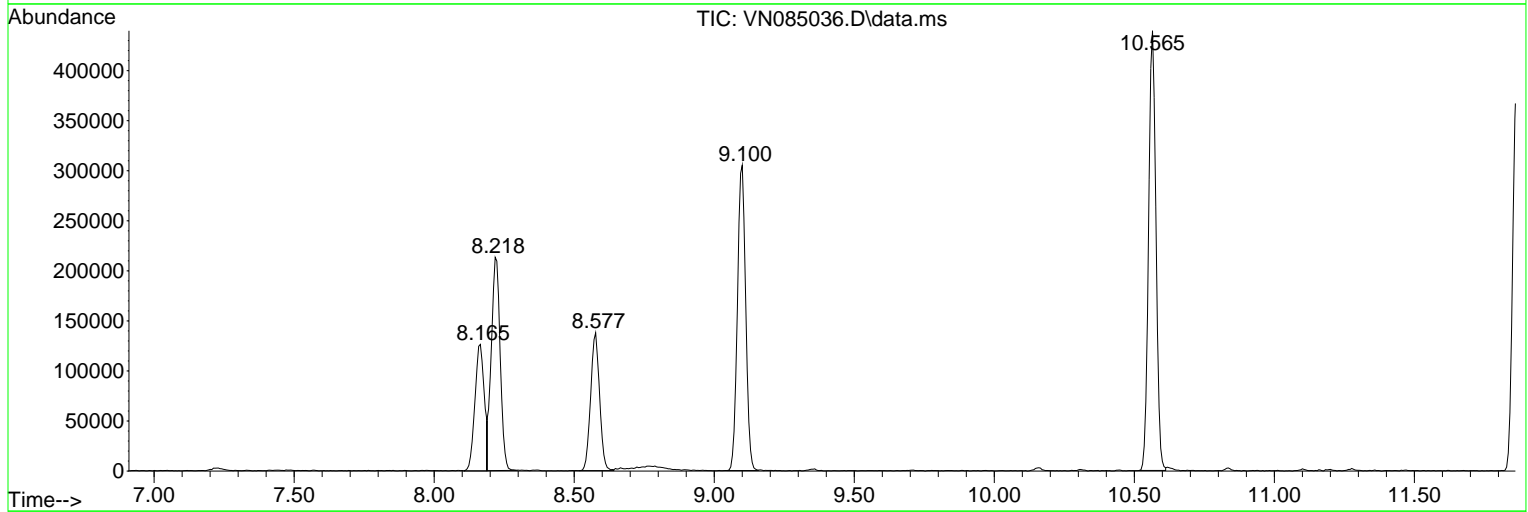
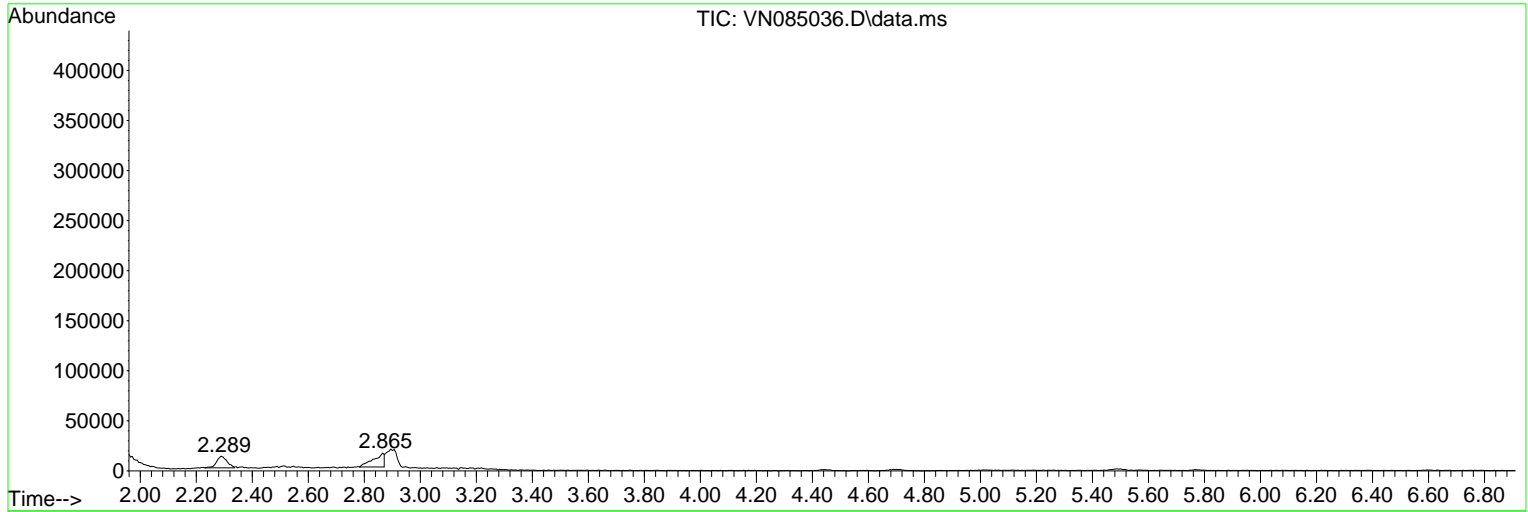
Sum of corrected areas: 4550058

Data Path : Z:\voasrv\HPCHEM1\MSVOA_N\Data\VN112624\
Data File : VN085036.D
Acq On : 26 Nov 2024 11:21
Operator : JC\MD
Sample : VN1126MBL01
Misc : 5.00g/10mL/100uL/5.00mL/MSVOA_N/MEOH
ALS Vial : 3 Sample Multiplier: 1

Instrument :
MSVOA_N
ClientSampleId :
VN1126MBL01

Quant Method : Z:\voasrv\HPCHEM1\MSVOA_N\methods\82N112224W.M
Quant Title : SW846 8260

TIC Library : C:\Database\NIST20.L
TIC Integration Parameters: LSCINT.P



Data Path : Z:\voasrv\HPCHEM1\MSVOA_N\Data\VN112624\
Data File : VN085036.D
Acq On : 26 Nov 2024 11:21
Operator : JC\MD
Sample : VN1126MBL01
Misc : 5.00g/10mL/100uL/5.00mL/MSVOA_N/MEOH
ALS Vial : 3 Sample Multiplier: 1

Instrument :
MSVOA_N
ClientSampleId :
VN1126MBL01

Quant Method : Z:\voasrv\HPCHEM1\MSVOA_N\methods\82N112224W.M
Quant Title : SW846 8260

TIC Library : C:\Database\NIST20.L
TIC Integration Parameters: LSCINT.P

No Library Search Compounds Detected

Data Path : Z:\voasrv\HPCHEM1\MSVOA_N\Data\VN112624\
Data File : VN085036.D
Acq On : 26 Nov 2024 11:21
Operator : JC\MD
Sample : VN1126MBL01
Misc : 5.00g/10mL/100uL/5.00mL/MSVOA_N/MEOH
ALS Vial : 3 Sample Multiplier: 1

Instrument :
MSVOA_N
ClientSampleId :
VN1126MBL01

Quant Method : Z:\voasrv\HPCHEM1\MSVOA_N\methods\82N112224W.M
Quant Title : SW846 8260

TIC Library : C:\Database\NIST20.L
TIC Integration Parameters: LSCINT.P

TIC Top Hit name	RT	EstConc	Units	Response	#	RT	Resp	Conc
------------------	----	---------	-------	----------	---	----	------	------

-----|