

Data Path : Z:\voasrv\HPCHEM1\MSVOA_N\Data\VN112724\
 Data File : VN085055.D
 Acq On : 27 Nov 2024 13:19
 Operator : JC\MD
 Sample : VN1127WBL01
 Misc : 5.0mL/MSVOA_N/WATER
 ALS Vial : 5 Sample Multiplier: 1

Instrument :
 MSVOA_N
ClientSampleId :
 VN1127WBL01

Quant Time: Nov 28 05:32:41 2024
 Quant Method : Z:\voasrv\HPCHEM1\MSVOA_N\methods\624N103124W.M
 Quant Title : METHOD 624 VOLATILE ORGANIC ANALYSIS
 QLast Update : Fri Nov 01 02:38:04 2024
 Response via : Initial Calibration

Compound	R. T.	QI on	Response	Conc	Units	Dev(Min)
Internal Standards						
1) Bromochloromethane	7.806	128	26189	30.000	ug/l	0.00
28) 1,4-Difluorobenzene	9.094	114	138613	30.000	ug/l	0.00
57) Chlorobenzene-d5	11.865	117	117498	30.000	ug/l	0.00
System Monitoring Compounds						
27) 1,2-Dichloroethane-d4	8.577	65	65482	31.101	ug/l	0.00
Spiked Amount	30.000	Range	91 - 110	Recovery	=	103.667%
60) 4-Bromofluorobenzene	12.847	95	49537	24.485	ug/l	0.00
Spiked Amount	30.000	Range	63 - 112	Recovery	=	81.633%
63) Toluene-d8	10.565	98	159071	28.598	ug/l	0.00
Spiked Amount	30.000	Range	91 - 112	Recovery	=	95.333%

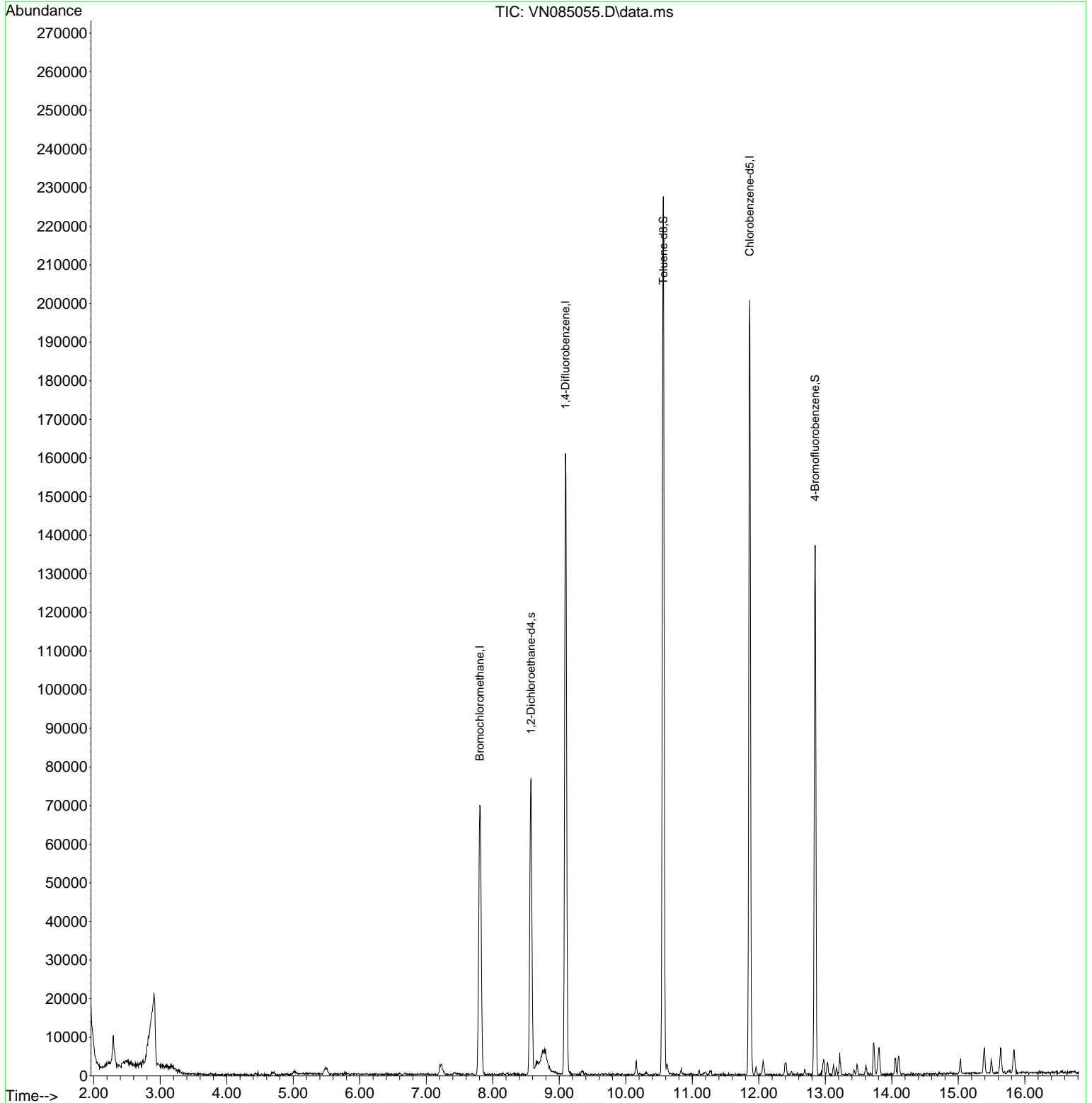
Target Compounds Qvalue

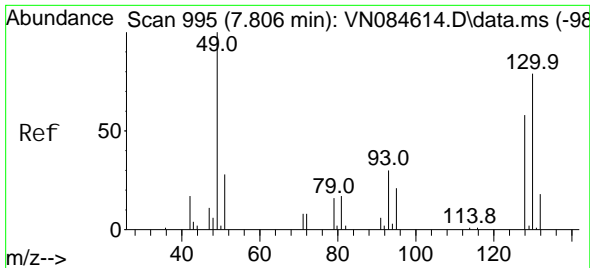
(#) = qualifier out of range (m) = manual integration (+) = signals summed

Data Path : Z:\voasrv\HPCHEM1\MSVOA_N\Data\VN112724\
 Data File : VN085055.D
 Acq On : 27 Nov 2024 13:19
 Operator : JC\MD
 Sample : VN1127WBL01
 Misc : 5.0mL/MSVOA_N/WATER
 ALS Vial : 5 Sample Multiplier: 1

Instrument :
 MSVOA_N
ClientSampleId :
 VN1127WBL01

Quant Time: Nov 28 05:32:41 2024
 Quant Method : Z:\voasrv\HPCHEM1\MSVOA_N\methods\624N103124W.M
 Quant Title : METHOD 624 VOLATILE ORGANIC ANALYSIS
 QLast Update : Fri Nov 01 02:38:04 2024
 Response via : Initial Calibration

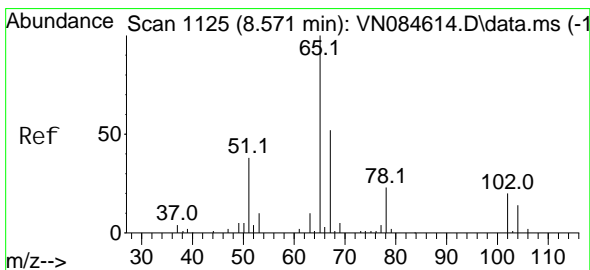
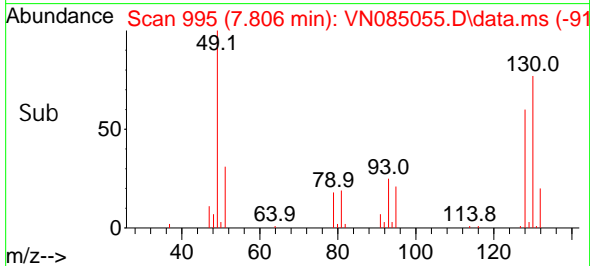
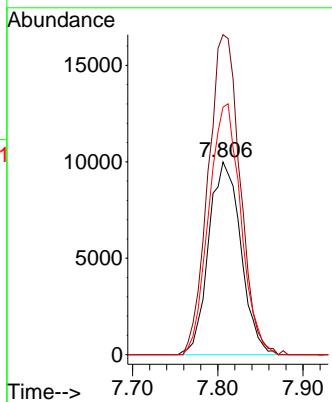
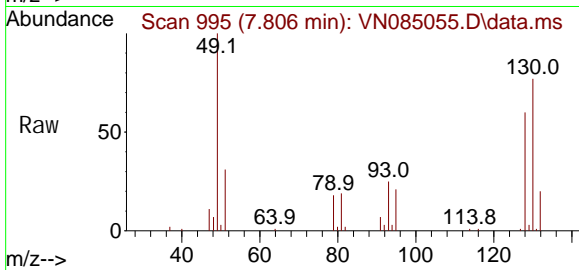




#1
 Bromochloromethane
 Concen: 30.000 ug/l
 RT: 7.806 min Scan# 91
 Delta R.T. 0.000 min
 Lab File: VN085055.D
 Acq: 27 Nov 2024 13:19

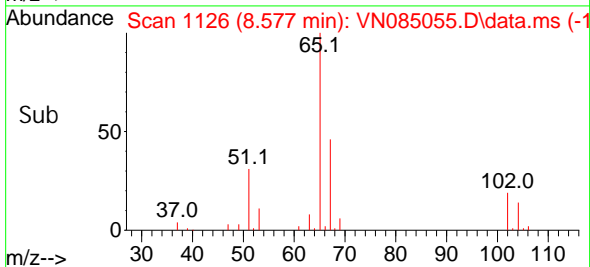
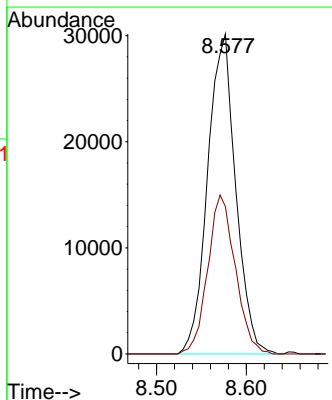
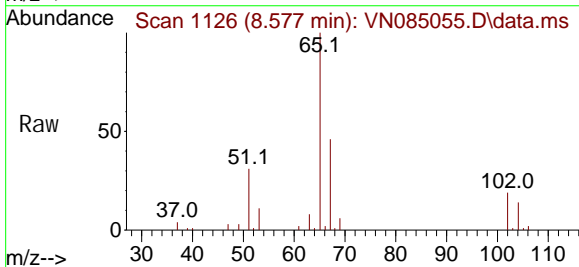
Instrument :
 MSVOA_N
 ClientSampleId :
 VN1127WBL01

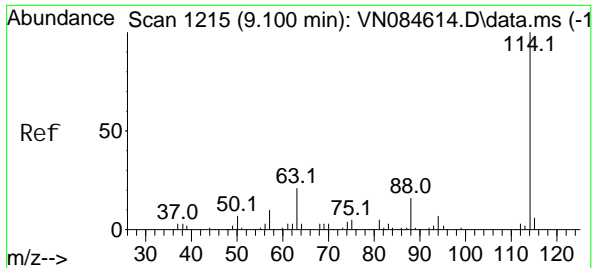
Tgt Ion	Resp	Lower	Upper
128	100		
49	164.8	0.0	427.0
130	129.7	0.0	322.2



#27
 1,2-Dichloroethane-d4
 Concen: 31.101 ug/l
 RT: 8.577 min Scan# 1126
 Delta R.T. 0.006 min
 Lab File: VN085055.D
 Acq: 27 Nov 2024 13:19

Tgt Ion	Resp	Lower	Upper
65	100		
67	48.8	40.7	61.1



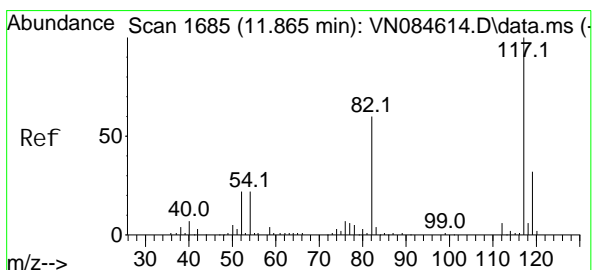
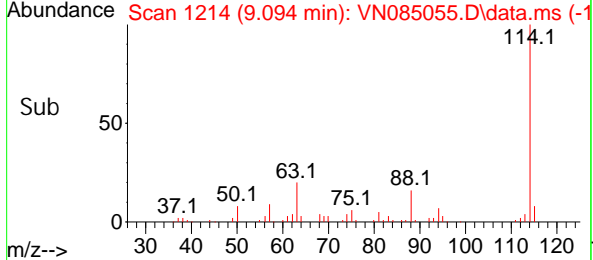
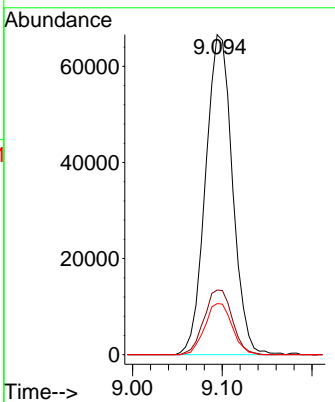
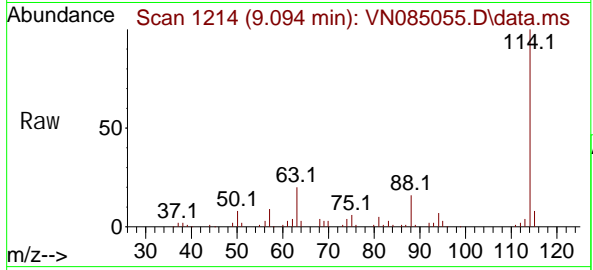


#28
 1,4-Difluorobenzene
 Concen: 30.000 ug/l
 RT: 9.094 min Scan# 111
 Delta R.T. -0.006 min
 Lab File: VN085055.D
 Acq: 27 Nov 2024 13:19

Instrument : MSVOA_N
 ClientSampleId : VN1127WBL01

Tgt Ion: 114 Resp: 138613

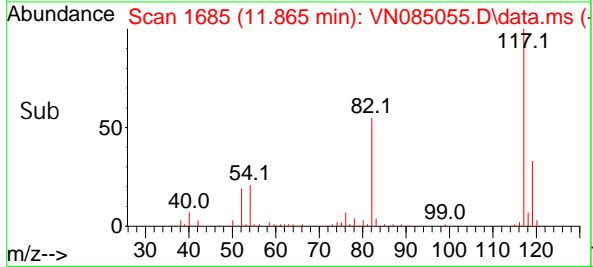
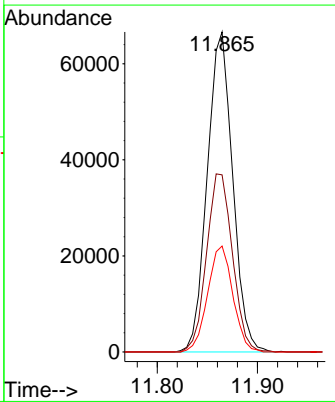
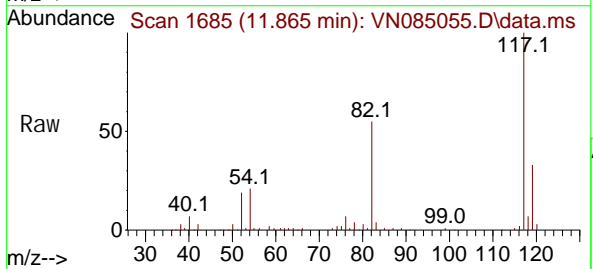
Ion	Ratio	Lower	Upper
114	100		
63	21.2	16.8	25.2
88	16.2	12.9	19.3

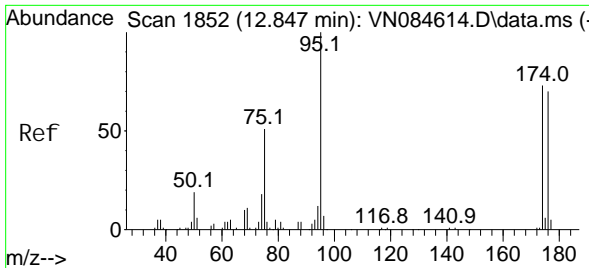


#57
 Chlorobenzene-d5
 Concen: 30.000 ug/l
 RT: 11.865 min Scan# 1685
 Delta R.T. -0.000 min
 Lab File: VN085055.D
 Acq: 27 Nov 2024 13:19

Tgt Ion: 117 Resp: 117498

Ion	Ratio	Lower	Upper
117	100		
82	56.7	45.5	68.3
119	32.8	25.3	37.9



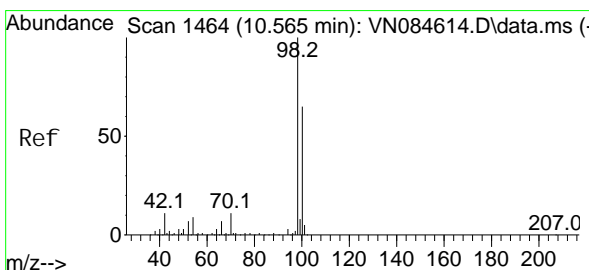
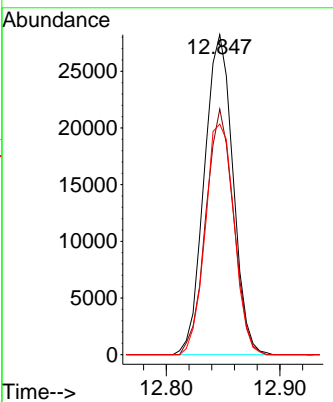
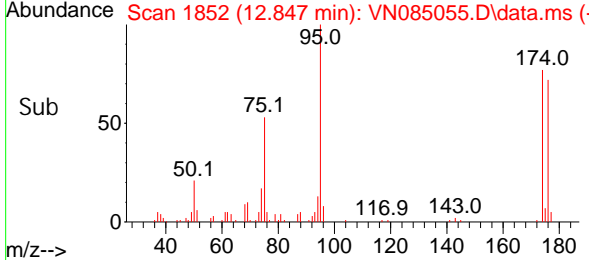
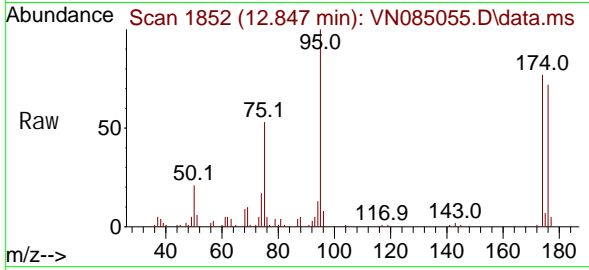


#60
 4-Bromofluorobenzene
 Concen: 24.485 ug/l
 RT: 12.847 min Scan# 1852
 Delta R.T. -0.000 min
 Lab File: VN085055.D
 Acq: 27 Nov 2024 13:19

Instrument :
 MSVOA_N
ClientSampleId :
 VN1127WBL01

Tgt Ion: 95 Resp: 49537

Ion	Ratio	Lower	Upper
95	100		
174	74.2	59.6	89.4
176	72.7	58.6	88.0



#63
 Toluene-d8
 Concen: 28.598 ug/l
 RT: 10.565 min Scan# 1464
 Delta R.T. -0.000 min
 Lab File: VN085055.D
 Acq: 27 Nov 2024 13:19

Tgt Ion: 98 Resp: 159071

Ion	Ratio	Lower	Upper
98	100		
100	66.3	52.2	78.2

