

Data Path : Z:\voasrv\HPCHEM1\MSVOA_N\Data\VN112724\
 Data File : VN085057.D
 Acq On : 27 Nov 2024 14:20
 Operator : JC\MD
 Sample : P5018-02 5X
 Misc : 5.0mL/MSVOA_N/WATER
 ALS Vial : 7 Sample Multiplier: 1

Instrument :
 MSVOA_N
ClientSampleId :
 14B-2

Quant Time: Nov 28 06:57:17 2024
 Quant Method : Z:\voasrv\HPCHEM1\MSVOA_N\methods\624N103124W.M
 Quant Title : METHOD 624 VOLATILE ORGANIC ANALYSIS
 QLast Update : Fri Nov 01 02:38:04 2024
 Response via : Initial Calibration

Compound	R.T.	QI on	Response	Conc	Units	Dev(Min)
Internal Standards						
1) Bromochloromethane	7.806	128	21362	30.000	ug/l	0.00
28) 1,4-Difluorobenzene	9.094	114	109546	30.000	ug/l	0.00
57) Chlorobenzene-d5	11.865	117	94649	30.000	ug/l	0.00
System Monitoring Compounds						
27) 1,2-Dichloroethane-d4	8.576	65	51084	29.745	ug/l	0.00
Spiked Amount	30.000	Range 91 - 110	Recovery =	99.167%		
60) 4-Bromofluorobenzene	12.847	95	38956	23.904	ug/l	0.00
Spiked Amount	30.000	Range 63 - 112	Recovery =	79.667%		
63) Toluene-d8	10.565	98	125867	28.091	ug/l	0.00
Spiked Amount	30.000	Range 91 - 112	Recovery =	93.633%		

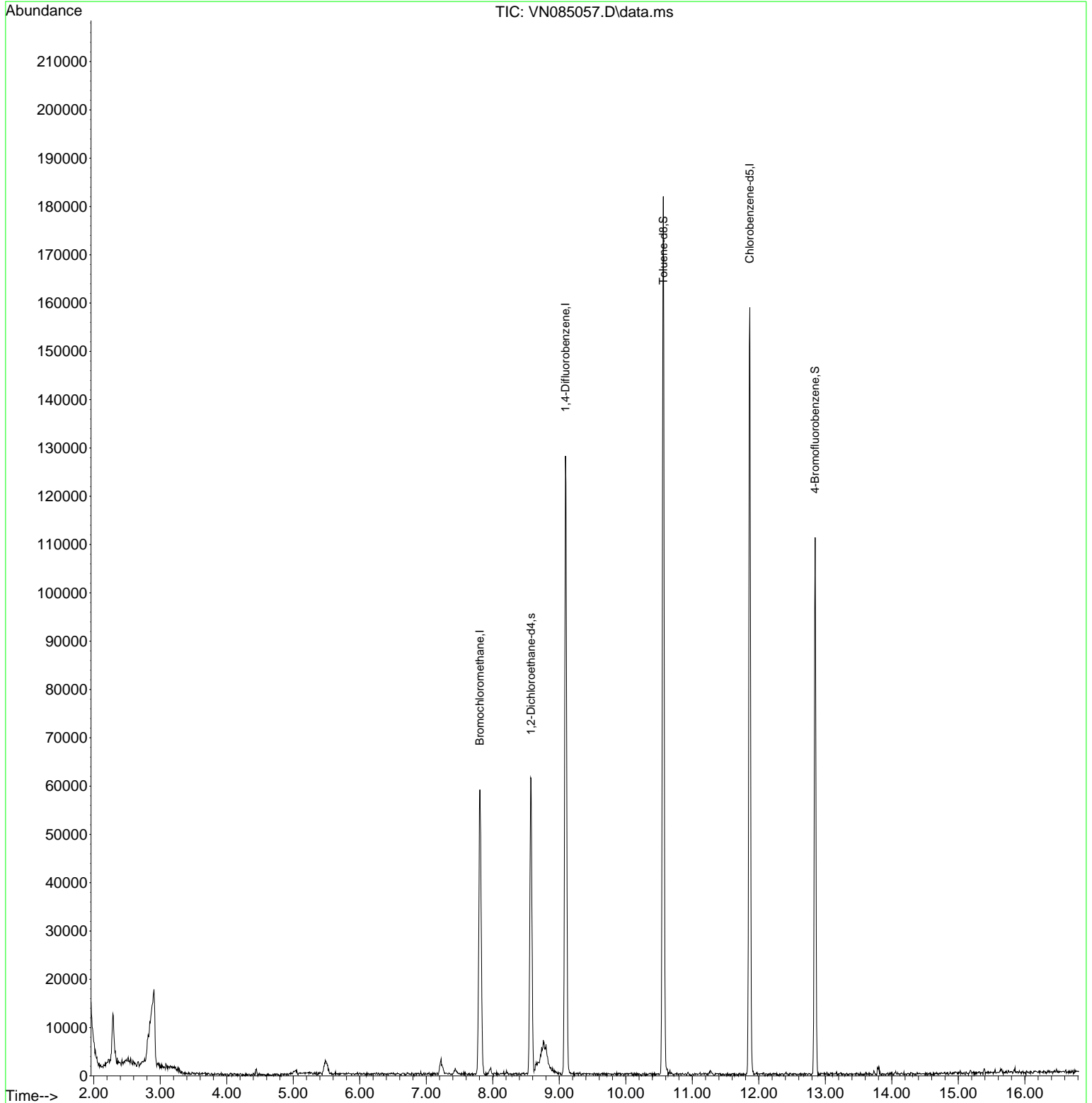
Target Compounds Qvalue

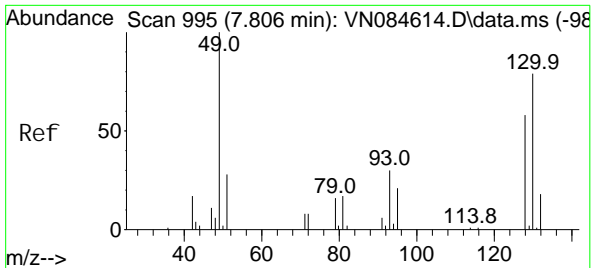
(#) = qualifier out of range (m) = manual integration (+) = signals summed

Data Path : Z:\voasrv\HPCHEM1\MSVOA_N\Data\VN112724\
Data File : VN085057.D
Acq On : 27 Nov 2024 14:20
Operator : JC\MD
Sample : P5018-02 5X
Misc : 5.0mL/MSVOA_N/WATER
ALS Vial : 7 Sample Multiplier: 1

Instrument :
MSVOA_N
ClientSampleId :
14B-2

Quant Time: Nov 28 06:57:17 2024
Quant Method : Z:\voasrv\HPCHEM1\MSVOA_N\methods\624N103124W.M
Quant Title : METHOD 624 VOLATILE ORGANIC ANALYSIS
QLast Update : Fri Nov 01 02:38:04 2024
Response via : Initial Calibration

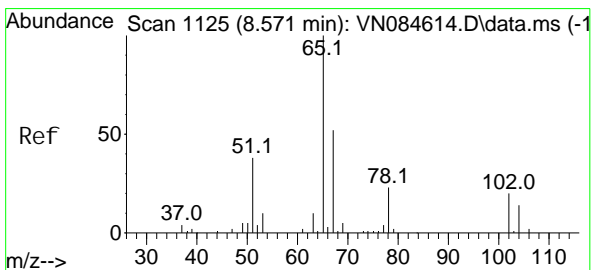
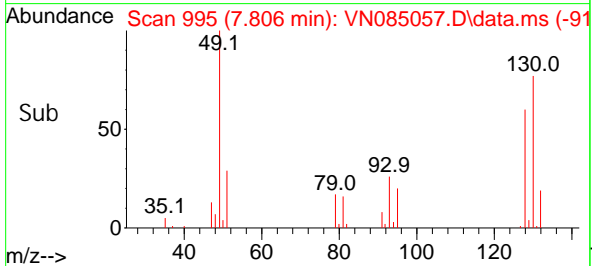
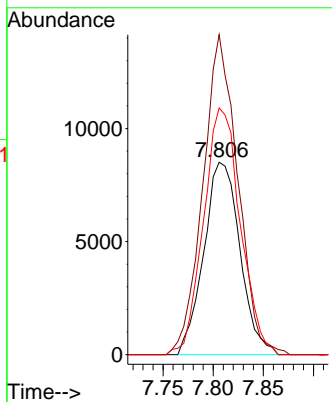
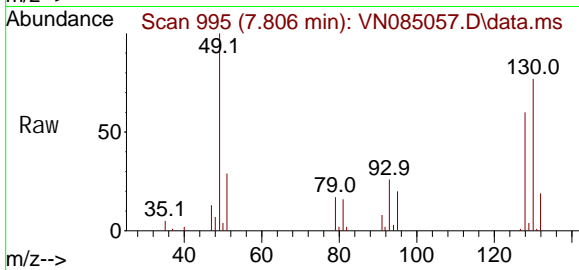




#1
 Bromochloromethane
 Concen: 30.000 ug/l
 RT: 7.806 min Scan# 995
 Delta R.T. -0.000 min
 Lab File: VN085057.D
 Acq: 27 Nov 2024 14:20

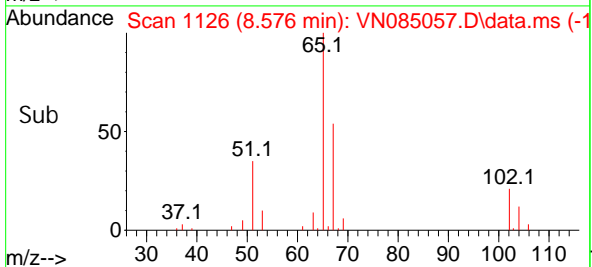
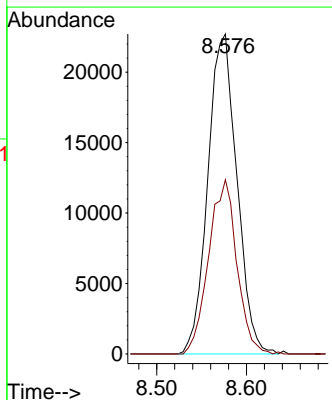
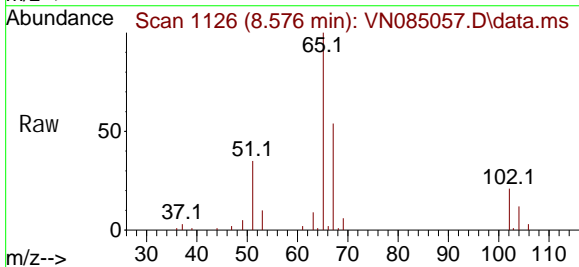
Instrument : MSVOA_N
 ClientSampleId : 14B-2

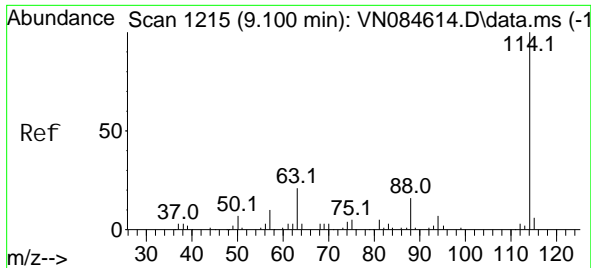
Tgt Ion	Resp	Lower	Upper
128	100		
49	160.1	0.0	427.0
130	130.4	0.0	322.2



#27
 1,2-Dichloroethane-d4
 Concen: 29.745 ug/l
 RT: 8.576 min Scan# 1126
 Delta R.T. 0.006 min
 Lab File: VN085057.D
 Acq: 27 Nov 2024 14:20

Tgt Ion	Resp	Lower	Upper
65	100		
67	52.7	40.7	61.1



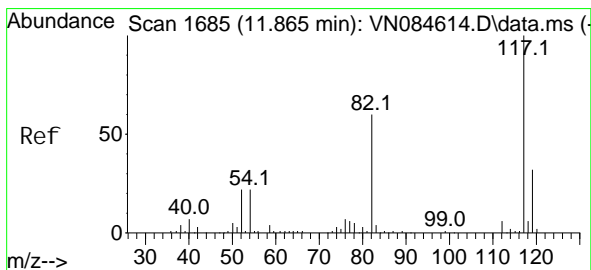
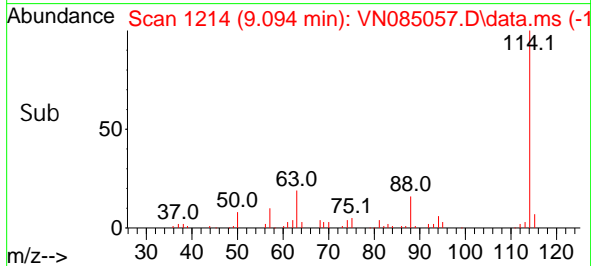
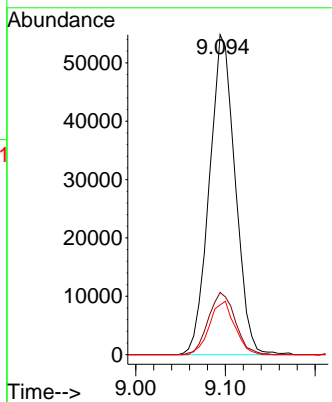
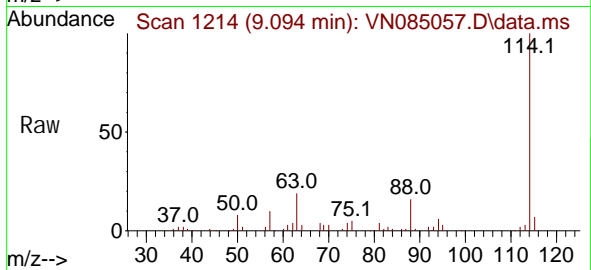


#28
 1, 4-Di fluorobenzene
 Concen: 30.000 ug/l
 RT: 9.094 min Scan# 111
 Delta R.T. -0.006 min
 Lab File: VN085057.D
 Acq: 27 Nov 2024 14:20

Instrument : MSVOA_N
 ClientSampleId : 14B-2

Tgt Ion: 114 Resp: 109546

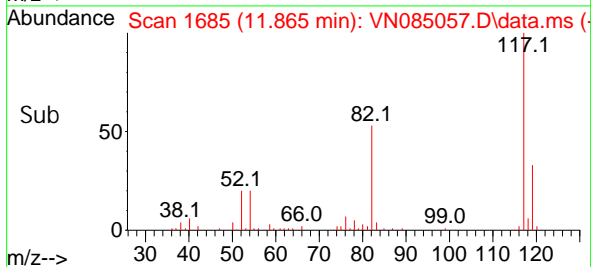
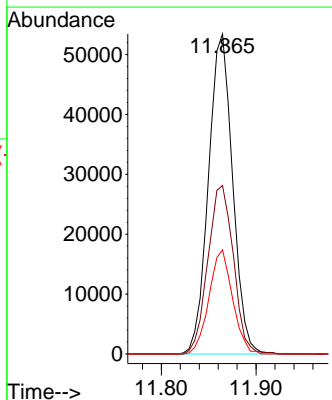
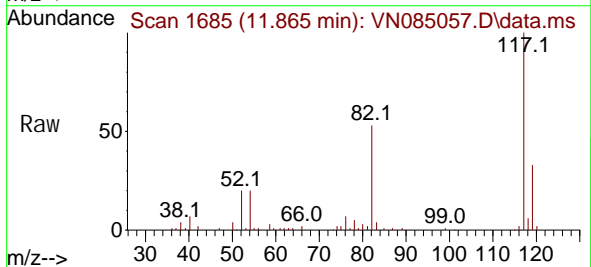
Ion	Ratio	Lower	Upper
114	100		
63	20.2	16.8	25.2
88	16.3	12.9	19.3

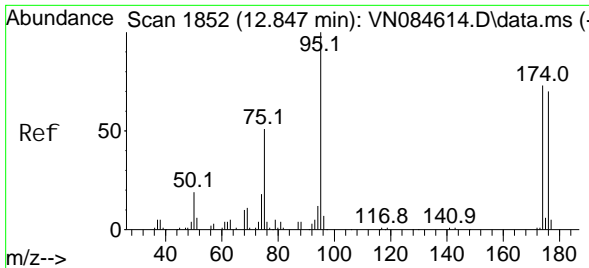


#57
 Chlorobenzene-d5
 Concen: 30.000 ug/l
 RT: 11.865 min Scan# 1685
 Delta R.T. -0.000 min
 Lab File: VN085057.D
 Acq: 27 Nov 2024 14:20

Tgt Ion: 117 Resp: 94649

Ion	Ratio	Lower	Upper
117	100		
82	55.7	45.5	68.3
119	31.7	25.3	37.9



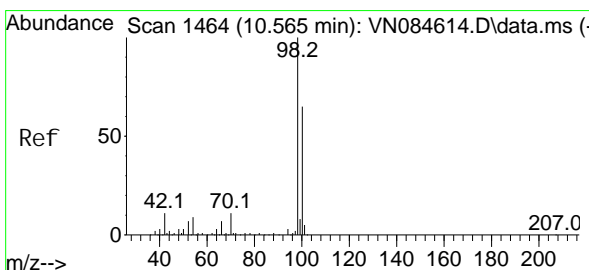
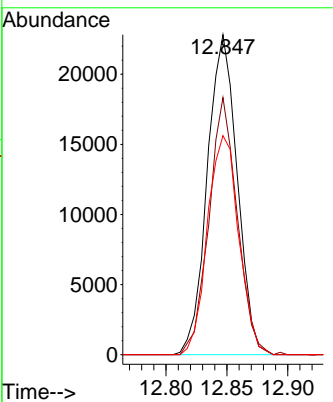
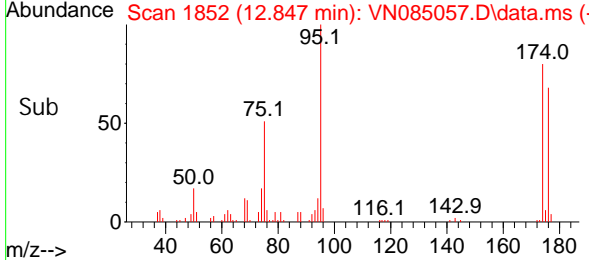
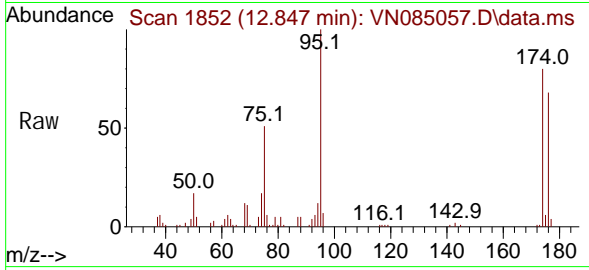


#60
 4-Bromofluorobenzene
 Concen: 23.904 ug/l
 RT: 12.847 min Scan# 1852
 Delta R.T. -0.000 min
 Lab File: VN085057.D
 Acq: 27 Nov 2024 14:20

Instrument : MSVOA_N
 ClientSampleId : 14B-2

Tgt Ion: 95 Resp: 38956

Ion	Ratio	Lower	Upper
95	100		
174	76.0	59.6	89.4
176	71.6	58.6	88.0



#63
 Toluene-d8
 Concen: 28.091 ug/l
 RT: 10.565 min Scan# 1464
 Delta R.T. -0.000 min
 Lab File: VN085057.D
 Acq: 27 Nov 2024 14:20

Tgt Ion: 98 Resp: 125867

Ion	Ratio	Lower	Upper
98	100		
100	64.9	52.2	78.2

